


 K O G E R A I R<sup>®</sup>





## CONTENTS

- 03 About us
- 05 Industries we serve
- 06 Systems
- 08 Airlocks
- 10 Fans
- 30 Cyclones
- 32 Component Parts
- 42 Fabrication Capabilities
- 43 Facilities





alternative fuels. ✨ Over the years, we have established and sustained strong relationships with hundreds of our customers who have been historically rated in the top 100 of their industry class. Typically, these customers are family-owned and operated businesses, and we've been very fortunate to have provided several generations with years of service.

✨ Likewise, we have grown to become a family-owned and operated business today. Our journey has taken us from servicing the Mid-Atlantic region in the beginning, to the midwest, to nationwide, to North America, and now to global markets. ✨ We are committed to quality, to our customers, to our employees, and to the future. We are excited to accept each new challenge our customer presents, and to always be there with the best solutions we can offer in the years ahead.

SIZE INLET	CAPACITY CFM 2"SP
8	1390
10	2180
12	3140
14	4275
16	5600
18	7000
20	8700
22	10500
24	12600
26	14700
28	17100
30	19600
32	22300
34	25200
36	28300
38	31500
40	34900

STANDARD  
UPBLAS  
ACCESS  
FIXED  
RIVITE  
SINGLE





Koger serves a variety of industries including [woodworking](#) lumber [pallet](#) furniture [wood flour](#) cabinet [flooring](#) paneling [window and door](#) brick [paper](#) cardboard [plastics](#) printing and publishing [rubber](#) grain-handling [glass](#) pharmaceuticals [foam rubber](#) robotics [thermal oxidation](#) and alternative fuels



# SYSTEMS



Whatever terminology you choose to use, from blowpipe, air handling/ conveying, dust collection and control, pneumatic material conveying, Koger Air designs, builds, installs and services heavy-duty industrial systems for dust producing industries throughout North America.

Each Koger Air system is custom-designed to handle the specific airflow and product collection needs of the

customer, including transfer methods for waste collection, material separation or recycling. Our focus is quick and efficient capture of fugitive dust from the work area to secure a clean environment inside as well as outside the manufacturing facility.

Koger project managers work directly with the customer to tailor solutions to specific problems. Each customer receives prompt

attention, project evaluation, research and a proposed resolution. A dedicated hands-on project manager oversees a project from the first meeting with the customer to the completion of the project.

Koger Air is fully equipped and staffed for all phases of transporting, erecting, storing and on-site assembling of parts and systems. Each installation is completed by

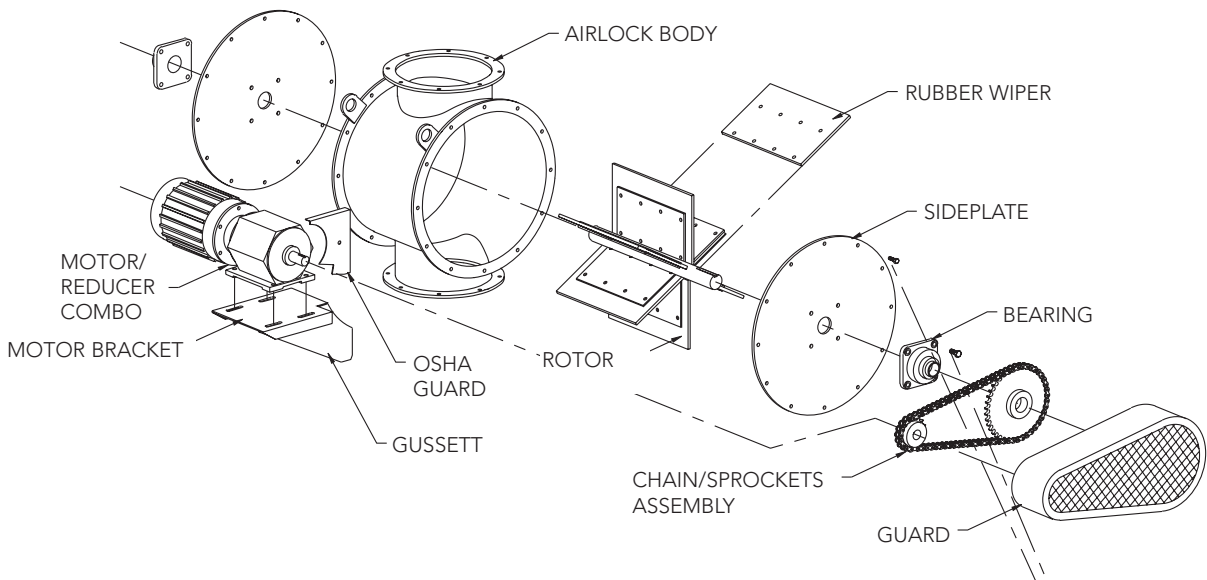
Koger's highly trained field mechanics and project managers in accordance with the customer's specifications and time schedules, without interruption to manufacturing processes.

We honor and respect each customer and value the contributions we make toward keeping their plants and systems in full, efficient operation. The Koger Air technical staff is always ready to be of prompt assistance,

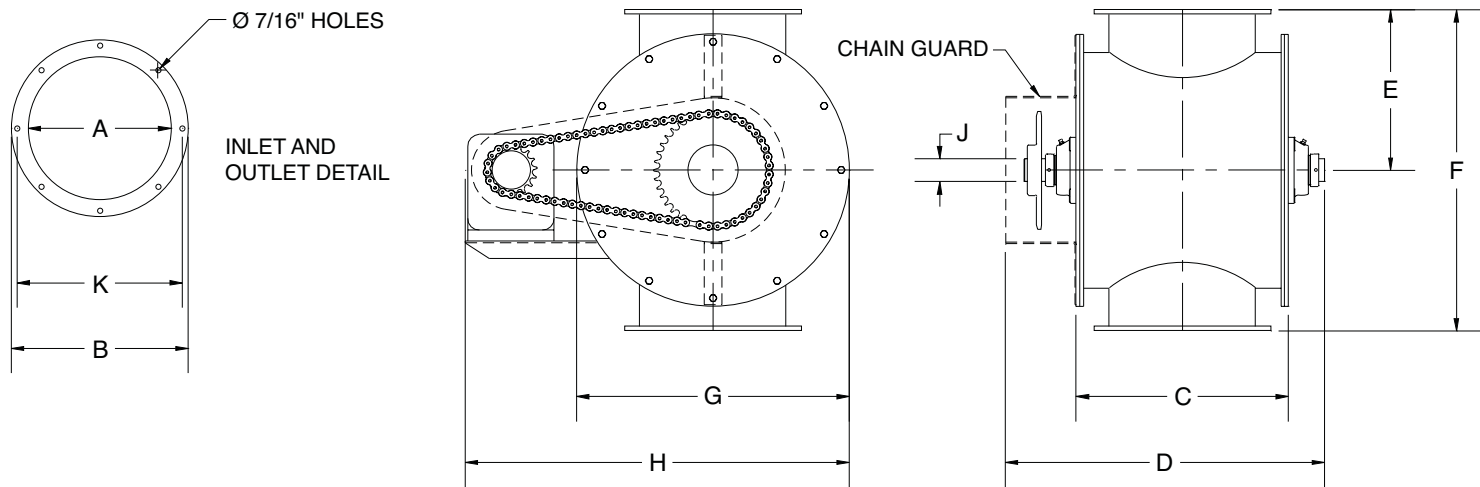
particularly when emergencies arise. Specifications and plans for all systems and components are kept on file for easy retrieval and duplication. Koger's components division is kept well stocked with standard system components for both daily and urgent service calls.

- [Design, fabrication, installation and service of:](#)
- Industrial Blowpipe/Dust Collection and Control
  - Pneumatic Material Conveying
  - Material Conveying
  - Process Materials Management
  - Pneumatic Trailer Loading
  - Product Metering Bins

AIR LOCKS



Maintenance



Koger Air Industrial Rotary Airlock Feeders

- Maintains operating air pressure and control of pneumatic material conveying system; most effective in low pressure industrial applications.
  - Roller chain and sprocket driven by a parallel shaft reducer with 2 HP, 3 phase, 60 hertz, 230/460 volt motor. Protective chain guard is constructed with an expanded metal front for easy visibility of chain operation.
  - C-flange motor mount permits positive drive for more torque and increased efficiency.
- Variable metering speeds
  - Four and six blade rotors are designed to meter larger foreign objects.
  - 10 gauge HR housing formed to precision tolerances with smooth interior surface to assure free flow of materials.
  - Heavy duty rubber wipers are reinforced with steel, durable, spark resistant, easily replaceable. Continually wipes down excess material from internal walls preventing blockage.
- Round inlet and outlet flanges are pre-drilled with 7/16" bolt holes for quick and easy installation. Available with matching flanges.
  - Easy service access to rotor through removable side plates.
  - Performance fully guaranteed for one year.

Standard Chain Driven Airlock Feeders																
A = Size	B	C	D	E	F	G	H	J	K		Motor HP	Voltage	No. of Vanes	RPM	Cubic Ft. /Rev.	WT
									Bolt Hole Ctr.	# Holes						
10"	13 1/8"	14"	23 1/8"	13 5/8"	27 1/4"	23"	33 1/4"	1 15/16"	11 13/16"	6	2	230/460	4	28	1.85*	400 lb.
12"	15 1/8"	16"	24 3/8"	13 5/8"	27 1/4"	23"	33 1/4"	1 15/16"	14"	8	2	230/460	4	28	2.75*	410 lb.
14"	17 1/8"	18"	26 7/8"	13 5/8"	27 1/4"	23"	33 1/4"	1 15/16"	16"	8	2	230/460	6	28	3.00*	470 lb.
16"	19 1/8"	21 1/2"	30 3/4"	16 5/8"	33 1/4"	30"	41 1/4"	2 7/16"	18"	8	2	230/460	6	21	4.51*	690 lb.
20"	24 1/8"	24"	33 1/4"	18 5/8"	37 1/4"	34"	45 1/2"	2 7/16"	21 3/4"	12	2	230/460	6	16	8.50*	950 lb.
24"	28 1/8"	30"	40 5/8"	21 5/8"	43 1/4"	40"	51 3/4"	2 7/16"	25 7/8"	12	2	230/460	6	16	15.00*	1325 lb.

Standard 10" to 24" airlocks are normally shipped same day. Certified drawings with specific construction dimensions are available upon request.

\* Volumetric displacement is 100% as listed. Capacity selection is from 40% to 60%.

- Custom Options:
- Size
  - Materials including Stainless and Abrasion Resistant Steel
  - Square inlet and outlet flanges
  - Special paint and color



# FANS



## Koger Air Industrial Material and Air Handling Fans

Koger Air Industrial Material and Air Handling Fans range from sizes 11" to 41" and are fabricated from ¼" or heavier plate to handle system capacities from 660 to 60,000 cfm of air. Each fan is totally interchangeable to a clockwise or counterclockwise discharge. In addition, the fans are precision balanced in two planes side-to-side and end-to-end to minimize noise and vibration. Standard size fans normally ship same day of order. Special order fans made of Abrasion Resistant, Stainless and Heat Resistant Steels are normally shipped within two weeks.

### Fan Wheel

- Radial open and self-cleaning
- Six bladed wheel is a solid weld design with single spokes in fan sizes 11 and 13, and dual spokes for fan sizes 15 through 41.

### Fan Bearings

- Self-aligning, double row tapered roller bearings
- One-piece cast iron bearing housing handles high radial and thrust loads

### Shafting

- Precision machined from ground, polished and straightened shafting.

### Scroll Housing

- 100% welded, heavy-duty scroll housing
- Interchangeable to a clockwise or counterclockwise discharge

### Pedestal

- Heavy-duty pedestal supports, bearings, shaft and wheel
- Bearing mounts allow easy removal of bearings while giving maximum support to moving parts
- Removable pedestal allows assembly in desired rotation

### Inlets and Outlets

- Fan inlet is proportional to the fan outlet
- Standard fan inlet is a straight collar design for removal of fan sleeve connection
- Standard fan outlet is a flanged construction to provide maximum strength and simplify outside bolt connection of ductwork

### Custom Options

- Shaft seal
- Custom materials for wheel and housing include Abrasion Resistant, Stainless and Heat Resistant Steels
- Unitary Steel Support
- Flexible Inlet and Outlet Connections
- Flanged Inlet
- Outlet Transition
- Access Door
- Drain
- Arrangement 9
- Backplate Wheels

### AMCA Licensed

Koger Air Corporation certifies that the Koger Industrial Material and Air Handling Fans shown on pages 12 to 23 are licensed to bear the AMCA seal. The ratings shown are based on tests and procedures performed in accordance with AMCA Publication 211 and comply with the requirements of the AMCA Certified Ratings Program.



Inlet Size - 11" Dia. Outside  
Outlet Size - 9<sup>7</sup>/<sub>16</sub>" x 10<sup>7</sup>/<sub>8</sub>" Outside  
Wheel Diameter - 19<sup>1</sup>/<sub>8</sub>"  
Tip Speed = 5.01 X RPM

Inlet Area - .66 Sq. Ft. Outside  
Outlet Area - .64 Sq. Ft. Inside  
Wheel Circumference - 5.01 FT.  
Max Safe Fan Speed - 2995 RPM

Power Rating (BHP) does not include transmission losses. Performance Ratings do not include the effects of appurtenances (accessories). All capacities based on standard air (density .075 #/cu. ft. 70°F. 29.92" Hg. Bar.). Performances shown in the color zone are those operating at maximum static efficiency. Performances shown above colored line are those operating within optimum operation range. Performance certified is for installation type D - ducted inlet, ducted outlet.

SP*.>>		1		2		3		4		5		6		7		8		9	
OV*	CFM*	RPM	BHP	RPM	BHP	RPM	BHP	RPM	BHP	RPM	BHP	RPM	BHP	RPM	BHP	RPM	BHP	RPM	BHP
1000	660	737	0.29	1009	0.52			1413	1.15	1571	1.44	1713	1.74	1844	2.05			2094	2.97
1200	792	761	0.34	1024	0.60	1234	0.87	1426	1.29	1583	1.61	1726	1.94	1857	2.27	1979	2.62		
1400	924	788	0.39	1041	0.68	1248	0.98	1446	1.39	1597	1.78	1739	2.14	1870	2.50	1992	2.88	2106	3.25
1600	1056	818	0.46	1065	0.77	1264	1.09	1439	1.43	1597	1.78	1739	2.14	1870	2.50	1992	2.88	2106	3.25
1800	1188	853	0.54	1089	0.87	1285	1.22	1456	1.58	1610	1.96	1752	2.35	1883	2.74	2005	3.14	2119	3.55
2000	1320	890	0.64	1117	0.99	1309	1.36	1474	1.74	1627	2.15	1766	2.56	1896	2.98	2018	3.42	2132	3.85
2200	1452	930	0.75	1147	1.12	1333	1.51	1498	1.93	1644	2.35	1783	2.79	1911	3.24	2031	3.70	2145	4.16
2400	1584	974	0.87	1181	1.27	1361	1.68	1522	2.12	1668	2.57	1800	3.03	1928	3.51	2047	3.99	2159	4.48
2600	1716	1020	1.01	1217	1.44	1391	1.87	1546	2.32	1692	2.81	1823	3.29	1945	3.78	2064	4.30	2176	4.82
2800	1848	1066	1.17	1253	1.62	1422	2.07	1575	2.55	1716	3.06	1847	3.57	1968	4.09	2081	4.62	2192	5.17
3000	1980	1115	1.35	1291	1.82	1457	2.31	1606	2.81	1742	3.32	1871	3.86	1992	4.42	2105	4.98	2211	5.53
3200	2112	1164	1.54	1335	2.05	1493	2.57	1636	3.07	1772	3.62	1896	4.17	2016	4.76	2129	5.35	2235	5.94
3400	2244	1215	1.77	1379	2.30	1529	2.84	1671	3.38	1802	3.94	1925	4.52	2041	5.11	2153	5.73	2259	6.36
3600	2376	1266	2.01	1424	2.56	1566	3.13	1707	3.71	1833	4.28	1955	4.89	2069	5.51	2177	6.13	2283	6.79
3800	2508	1318	2.28	1470	2.85	1608	3.45	1743	4.07	1868	4.66	1986	5.28	2099	5.93	2204	6.57	2307	7.24
4000	2640	1370	2.57	1517	3.17	1653	3.81	1780	4.44	1904	5.08	2018	5.70	2129	6.37	2234	7.05	2333	7.72
4200	2772	1422	2.89	1566	3.53	1697	4.18	1817	4.84	1940	5.51	2053	6.17	2159	6.83	2264	7.54	2363	8.25
4400	2904	1477	3.25	1615	3.90	1742	4.58	1860	5.27	1976	5.97	2089	6.67	2194	7.36	2295	8.07	2393	8.81
4600	3036	1533	3.64	1665	4.31	1788	5.01	1904	5.73	2013	6.45	2125	7.19	2229	7.91	2327	8.62	2424	9.39
4800	3168	1589	4.06	1716	4.76	1834	5.47	1949	6.23	2053	6.97	2161	7.73	2265	8.50	2362	9.24	2454	9.98
5000	3300	1645	4.51	1767	5.23	1882	5.97	1994	6.75	2097	7.53	2198	8.31	2301	9.11	2398	9.94	2489	10.66
5200	3432	1701	4.99	1818	5.74	1931	6.50	2039	7.30	2141	8.11	2237	8.92	2337	9.74	2433	10.56	2525	11.39
5400	3564	1757	5.51	1870	6.28	1981	7.08	2085	7.89	2186	8.74	2280	9.57	2374	10.42	2470	11.28	2560	12.12
5600	3696	1814	6.07	1922	6.86	2031	7.69	2131	8.51	2231	9.39	2324	10.26	2412	11.12	2506	12.02	2596	12.90
5800	3828	1871	6.67	1975	7.48	2082	8.35	2180	9.19	2277	10.09	2369	10.99	2456	11.89	2543	12.79	2633	13.72
6000	3960	1928	7.31	2028	8.13	2132	9.03	2229	9.91	2323	10.82	2414	11.76	2500	12.68	2582	13.61	2669	14.55
6200	4092	1986	8.00	2083	8.84	2184	9.77	2279	10.67	2369	11.58	2459	12.55	2544	13.51	2625	14.46	2706	15.43
6400	4224	2043	8.71	2139	9.60	2235	10.53	2329	11.48	2416	12.39	2505	13.40	2589	14.39	2669	15.37	2746	16.36
6600	4356	2101	9.48	2194	10.39	2287	11.34	2379	12.32	2465	13.27	2551	14.28	2634	15.30	2714	16.33	2790	17.34
6800	4488	2159	10.30	2250	11.24	2339	12.20	2430	13.21	2515	14.20	2597	15.20	2680	16.27	2758	17.31	2834	18.37

SP*.>>		10		11		12		13		14		15		16		17		18	
OV*	CFM*	RPM	BHP	RPM	BHP	RPM	BHP	RPM	BHP	RPM	BHP	RPM	BHP	RPM	BHP	RPM	BHP	RPM	BHP
2000	1320	2241	4.30	2344	4.75			2455	5.61	2550	6.11	2640	6.60	2728	7.10	2894	8.14	2975	8.65
2200	1452	2254	4.64	2357	5.12	2455	5.61	2550	6.11	2640	6.60	2728	7.10	2894	8.14	2975	8.65		
2400	1584	2267	4.99	2370	5.50	2468	6.02	2563	6.54	2653	7.07	2741	7.60	2826	8.14	2907	8.69	2988	9.24
2600	1716	2282	5.35	2383	5.89	2481	6.43	2576	6.99	2666	7.54	2754	8.11	2839	8.68	2920	9.25	3001	9.83
2800	1848	2298	5.73	2399	6.29	2496	6.87	2589	7.44	2680	8.03	2767	8.62	2852	9.22	2933	9.83	3014	10.44
3000	1980	2315	6.12	2416	6.71	2512	7.31	2605	7.92	2694	8.53	2780	9.14	2865	9.78	2946	10.41	3027	11.05
3200	2112	2335	6.53	2432	7.14	2529	7.78	2621	8.41	2710	9.05	2796	9.70	2879	10.35	2960	11.02	3040	11.68
3400	2244	2359	6.99	2455	7.62	2546	8.25	2638	8.92	2727	9.59	2812	10.26	2895	10.94	2975	11.63	3054	12.32
3600	2376	2383	7.45	2478	8.11	2569	8.77	2657	9.45	2743	10.13	2829	10.84	2912	11.55	2992	12.27	3071	12.99
3800	2508	2407	7.93	2502	8.63	2593	9.32	2681	10.03	2765	10.73	2846	11.43	2929	12.18	3008	12.93	3087	13.67
4000	2640	2431	8.43	2526	9.16	2617	9.89	2704	10.62	2789	11.36	2870	12.10	2948	12.83	3026	13.60	3104	14.37
4200	2772	2457	8.96	2551	9.72	2641	10.47	2728	11.23	2812	12.00	2894	12.78	2972	13.54	3047	14.32	3122	15.09
4400	2904	2487	9.55	2576	10.29	2666	11.08	2753	11.88	2836	12.67	2917	13.47	2996	14.28	3071	15.05	3146	15.89
4600	3036	2517	10.16	2606	10.94	2692	11.72	2777	12.53	2861	13.36	2942	14.20	3020	15.03	3095	15.87	3170	16.71
4800	3168	2547	10.79	2636	11.60	2721	12.41	2803	13.22	2885	14.06	2966	14.94	3044	15.80	3119	16.67	3194	17.55
5000	3300	2578	11.46	2666	12.29	2751	13.14	2833	13.98	2912	14.82	2990	15.69	3068	16.59	3143	17.50	3218	18.41
5200	3432	2611	12.18	2697	13.02	2782	13.90	2863	14.77	2942	15.65	3018	16.52	3093	17.41	3168	18.35	3242	19.29
5400	3564	2647	12.97	2730	13.80	2812	14.68	2893	15.58	2972	16.50	3048	17.41	3121	18.31	3194	19.25	3266	20.19
5600	3696	2682	13.78	2765	14.65	2844	15.51	2924	16.44	3002	17.38	3078	18.32	3151	19.26	3222	20.20	3292	21.14
5800	3828	2718	14.62	2800	15.53	2879	16.43	2955	17.31	3032	18.27	3108	19.26	3181	20.23	3251	21.20	3321	22.17
6000	3960	2754	15.50	2836	16.45	2914	17.37	2990	18.30	3063	19.22	3138	20.22	3211	21.23	3281	22.28	3351	23.25
6200	4092	2791	16.42	2872	17.40	2950	18.37	3025	19.32	3098	20.28	3169	21.23	3242	22.28	3311	23.32	3381	24.35
6400	4224	2828	17.38	2908	18.38	2986	19.39	3061	20.39	3134	21.39	3204	22.36	3272	23.33	3342	24.41	3411	25.48
6600	4356	2865	18.37	2945	19.41	3021	20.45	3097	21.49	3169	22.51	3239	23.53	3307	24.54	3375	25.61	3442	26.67
6800	4488	2906	19.40	2982	20.48	3058	21.55	3133	22.63	3205	23.69	3275	24.75	3343	25.80	3408	26.84	3473	27.88

\*SP - Static Pressure Inches H<sub>2</sub>O   \*OV - Outlet Velocity (Feet Per Minute)   \*CFM - Cubic Feet Per Minute

Inlet Size - 13" Dia. Outside  
Outlet Size - 11" x 12<sup>13</sup>/<sub>16</sub>" Outside  
Wheel Diameter - 22<sup>5</sup>/<sub>8</sub>"  
Tip Speed = 5.92 x RPM

Inlet Area - .92 Sq. Ft. Outside  
Outlet Area - .90 Sq. Ft. Inside  
Wheel Circumference - 5.92 Ft.  
Max Safe Fan Speed - 2530 RPM

Power Rating (BHP) does not include transmission losses. Performance Ratings do not include the effects of appurtenances (accessories). All capacities based on standard air (density .075 #/cu. ft. 70°F. 29.92" Hg. Bar.). Performances shown in the color zone are those operating at maximum static efficiency. Performances shown above colored line are those operating within optimum operation range. Performance certified is for installation type D - ducted inlet, ducted outlet.

SP*.>>		1		2		3		4		5		6		7		8		9	
OV*	CFM*	RPM	BHP	RPM	BHP	RPM	BHP	RPM	BHP	RPM	BHP	RPM	BHP	RPM	BHP	RPM	BHP	RPM	BHP
1000	920	623	0.45	853	0.80														
1200	1104	643	0.52	865	0.91	1043	1.30	1194	1.71	1327	2.12	1448	2.55	1559	2.99				
1400	1288	665	0.61	879	1.02	1054	1.45	1205	1.90	1338	2.36	1459	2.83	1569	3.30	1673	3.79	1769	4.29
1600	1472	691	0.70	899	1.15	1068	1.61	1216	2.10	1349	2.60	1470	3.11	1580	3.62	1683	4.15	1780	4.69
1800	1656	720	0.82	920	1.29	1085	1.79	1230	2.31	1361	2.85	1481	3.40	1591	3.96	1694	4.53	1791	5.11
2000	1840	751	0.95	943	1.45	1105	1.99	1245	2.53	1375	3.11	1493	3.70	1602	4.29	1705	4.91	1802	5.53
2200	2024	784	1.10	969	1.64	1126	2.20	1265	2.79	1389	3.39	1506	4.01	1615	4.65	1716	5.30	1813	5.96
2400	2208	822	1.28	997	1.85	1149	2.44	1286	3.06	1409	3.70	1520	4.34	1629	5.03	1730	5.72	1825	6.41
2600	2392	860	1.48	1027	2.09	1174	2.70	1306	3.35	1429	4.03	1540	4.72	1643	5.41	1744	6.14	1838	6.87
2800	2576	899	1.70	1058	2.35	1200	2.98	1330	3.67	1449	4.38	1560	5.11	1663	5.85	1758	6.58	1852	7.36
3000	2760	940	1.95	1089	2.63	1230	3.32	1356	4.02	1471	4.75	1581	5.52	1683	6.30	1778	7.08	1868	7.87
3200	2944	982	2.23	1126	2.94	1260	3.67	1381	4.39	1496	5.17	1601	5.94	1703	6.77	1798	7.60	1888	8.44
3400	3128	1024	2.54	1163	3.28	1291	4.06	1411	4.83	1522	5.62	1626	6.44	1724	7.27	1819	8.15	1908	9.02
3600	3312	1067	2.88	1201	3.66	1322	4.47	1441	5.29	1547	6.08	1651	6.95	1747	7.81	1839	8.70	1928	9.62
3800	3496	1110	3.25	1240	4.07	1357	4.92	1471	5.77	1577	6.62	1676	7.48	1772	8.40	1861	9.30	1949	10.25
4000	3680	1154	3.66	1279	4.51	1394	5.40	1502	6.30	1607	7.19	1703	8.07	1797	9.01	1886	9.96	1970	10.91
4200	3864	1199	4.12	1320	5.00	1431	5.92	1533	6.85	1637	7.79	1733	8.73	1823	9.65	1912	10.66	1996	11.67
4400	4048	1245	4.61	1362	5.54	1470	6.49	1569	7.45	1668	8.44	1763	9.42	1852	10.39	1937	11.37	2021	12.43
4600	4232	1291	5.14	1404	6.11	1508	7.08	1606	8.10	1699	9.11	1793	10.14	1881	11.15	1964	12.15	2046	13.22
4800	4416	1338	5.73	1446	6.72	1547	7.72	1644	8.79	1732	9.82	1824	10.90	1912	11.98	1994	13.02	2072	14.06
5000	4600	1385	6.35	1489	7.38	1587	8.41	1681	9.50	1769	10.60	1855	11.70	1942	12.82	2024	13.93	2101	15.00
5200	4784	1433	7.04	1533	8.10	1628	9.16	1720	10.29	1806	11.42	1887	12.55	1973	13.72	2054	14.87	2131	16.00
5400	4968	1480	7.76	1576	8.84	1670	9.96	1758	11.09	1844	12.29	1924	13.47	2004	14.66	2084	15.84	2161	17.04
5600	5152	1528	8.54	1620	9.65	1712	10.81	1797	11.96	1882	13.20	1961	14.43	2035	15.62	2115	16.88	2191	18.11
5800	5336	1576	9.37	1664	10.50	1755	11.72	1838	12.90	1920	14.16	1998	15.43	2072	16.69	2146	17.95	2222	19.25
6000	5520	1624	10.26	1709	11.42	1797	12.67	1879	13.90	1959	15.18	2036	16.49	2109	17.80	2178	19.08	2253	20.43
6200	5704	1673	11.21	1755	12.40	1840	13.68	1921	14.96	1998	16.25	2074	17.60	2146	18.95	2215	20.29	2284	21.64
6400	5888	1721	12.21	1802	13.45	1884	14.76	1963	16.07	2037	17.36	2112	18.76	2184	20.17	2252	21.56	2317	22.93
6600	6072	1770	13.28	1849	14.56	1927	15.87	2005	17.24	2079	18.60	2151	19.99	2222	21.45	2289	22.87	2353	24.27
6800	6256	1818	14.40	1895	15.71	1971	17.07	2048	18.48	2120	19.86	2190	21.28	2260	22.77	2327	24.26	2390	25.69



Inlet Size - 15" Dia. Outside  
Outlet Size - 12¾" x 14¾" Outside  
Wheel Diameter - 26⅞"  
Tip Speed = 6.84 x RPM

Inlet Area - 1.23 Sq. Ft. Outside  
Outlet Area - 1.21 Sq. Ft. Inside  
Wheel Circumference - 6.84 Ft.  
Max Safe Fan Speed - 2195 RPM

Power Rating (BHP) does not include transmission losses. Performance Ratings do not include the effects of appurtenances (accessories). All capacities based on standard air (density .075 #/cu. ft. 70°F. 29.92" Hg. Bar.). Performances shown in the color zone are those operating at maximum static efficiency. Performances shown above colored line are those operating within optimum operation range. Performance certified is for installation type D - ducted inlet, ducted outlet.

SP*.>>		1		2		3		4		5		6		7		8		9	
OV*	CFM*	RPM	BHP	RPM	BHP	RPM	BHP	RPM	BHP	RPM	BHP	RPM	BHP	RPM	BHP	RPM	BHP	RPM	BHP
1000	1230	539	0.69	739	1.18														
1200	1476	557	0.79	749	1.32	903	1.87	1034	2.44	1150	3.01	1254	3.60	1350	4.20				
1400	1722	576	0.90	762	1.48	913	2.07	1044	2.70	1159	3.32	1263	3.96	1359	4.62	1449	5.29	1533	5.97
1600	1968	599	1.03	779	1.65	925	2.29	1054	2.96	1169	3.65	1273	4.34	1369	5.05	1458	5.77	1542	6.50
1800	2214	624	1.19	797	1.85	940	2.53	1066	3.25	1179	3.98	1282	4.73	1378	5.49	1468	6.28	1551	7.05
2000	2460	651	1.37	817	2.07	958	2.81	1079	3.55	1191	4.34	1293	5.14	1388	5.95	1477	6.78	1561	7.63
2200	2706	680	1.58	840	2.32	975	3.09	1096	3.90	1203	4.71	1305	5.56	1399	6.43	1487	7.31	1570	8.20
2400	2952	713	1.82	864	2.60	996	3.41	1114	4.26	1221	5.14	1317	6.00	1411	6.93	1498	7.86	1581	8.81
2600	3198	746	2.09	890	2.92	1018	3.77	1132	4.65	1238	5.58	1335	6.52	1423	7.44	1511	8.44	1593	9.44
2800	3444	780	2.39	917	3.28	1040	4.15	1153	5.09	1256	6.05	1352	7.04	1441	8.04	1523	9.03	1605	10.09
3000	3690	815	2.73	944	3.65	1066	4.60	1175	5.56	1275	6.55	1370	7.59	1458	8.64	1541	9.71	1618	10.76
3200	3936	852	3.12	976	4.08	1092	5.08	1197	6.06	1297	7.12	1387	8.16	1476	9.29	1558	10.40	1636	11.53
3400	4182	889	3.54	1009	4.56	1119	5.60	1223	6.64	1319	7.71	1409	8.82	1494	9.95	1576	11.13	1653	12.31
3600	4428	926	4.00	1042	5.07	1146	6.16	1249	7.27	1341	8.34	1431	9.52	1514	10.68	1594	11.89	1671	13.13
3800	4674	964	4.52	1075	5.61	1177	6.77	1275	7.92	1367	9.07	1453	10.24	1536	11.48	1613	12.69	1689	13.98
4000	4920	1002	5.07	1109	6.21	1209	7.42	1302	8.63	1393	9.84	1477	11.04	1558	12.30	1635	13.59	1708	14.87
4200	5166	1040	5.67	1145	6.88	1242	8.14	1329	9.37	1419	10.65	1502	11.91	1580	13.16	1657	14.52	1729	15.85
4400	5412	1080	6.34	1181	7.59	1275	8.89	1361	10.20	1446	11.52	1528	12.83	1605	14.14	1679	15.48	1751	16.89
4600	5658	1121	7.08	1218	8.37	1308	9.69	1393	11.06	1473	12.43	1555	13.82	1631	15.19	1703	16.54	1774	17.99
4800	5904	1162	7.87	1255	9.21	1342	10.56	1425	11.98	1502	13.39	1581	14.83	1657	16.28	1728	17.69	1796	19.10
5000	6150	1203	8.73	1292	10.09	1377	11.50	1458	12.96	1534	14.44	1684	17.44	1754	18.90	1821	20.36		
5200	6396	1244	9.64	1330	11.06	1413	12.51	1492	14.02	1567	15.56	1710	18.62	1781	20.20	1847	21.70		
5400	6642	1285	10.62	1368	12.08	1449	13.59	1525	15.11	1599	16.71	1668	18.28	1807	21.51	1873	23.09		
5600	6888	1327	11.68	1406	13.16	1486	14.75	1559	16.27	1632	17.94	1700	19.57	1765	21.21	1834	22.90	1900	24.57
5800	7134	1368	12.79	1444	14.31	1522	15.94	1594	17.53	1665	19.22	1733	20.94	1797	22.64	1861	24.35	1926	26.06
6000	7380	1410	13.99	1483	15.54	1560	17.25	1630	18.88	1699	20.60	1766	22.38	1829	24.12	1889	25.86	1953	27.65
6200	7626	1452	15.27	1523	16.86	1597	18.60	1667	20.33	1732	22.04	1799	23.87	1861	25.67	1921	27.49	1980	29.29
6400	7872	1494	16.62	1564	18.29	1635	20.06	1703	21.81	1767	23.55	1832	25.43	1894	27.32	1953	29.18	2009	31.01
6600	8118	1536	18.05	1605	19.80	1673	21.58	1740	23.40	1803	25.19	1866	27.10	1927	29.03	1985	30.94	2041	32.85
6800	8364	1579	19.60	1645	21.35	1711	23.18	1777	25.07	1839	26.91	1900	28.83	1960	30.81	2018	32.81	2073	34.76

SP*.>>		10		11		12		13		14		15		16		17		18	
OV*	CFM*	RPM	BHP	RPM	BHP	RPM	BHP	RPM	BHP	RPM	BHP	RPM	BHP	RPM	BHP	RPM	BHP	RPM	BHP
2000	2460	1640	8.47	1716	9.35														
2200	2706	1650	9.12	1725	10.03	1797	10.96	1866	11.89	1933	12.85	1997	13.81	2059	14.77	2119	15.76	2178	16.74
2400	2952	1659	9.76	1735	10.74	1807	11.73	1876	12.72	1942	13.71	2006	14.72	2069	15.77	2128	16.79	2187	17.82
2600	3198	1670	10.44	1744	11.45	1816	12.49	1885	13.54	1952	14.61	2016	15.68	2078	16.76	2137	17.86	2197	18.95
2800	3444	1682	11.14	1756	12.22	1827	13.31	1895	14.40	1961	15.51	2026	16.65	2088	17.79	2147	18.93	2206	20.07
3000	3690	1694	11.86	1768	13.00	1839	14.15	1906	15.28	1972	16.46	2035	17.62	2097	18.81	2156	20.02	2216	21.23
3200	3936	1709	12.65	1780	13.80	1851	15.01	1919	16.22	1984	17.43	2047	18.66	2107	19.87	2166	21.13	2225	22.38
3400	4182	1727	13.51	1796	14.68	1863	15.88	1931	17.16	1996	18.43	2059	19.71	2119	20.98	2178	22.29	2236	23.60
3600	4428	1744	14.37	1814	15.63	1881	16.90	1945	18.16	2008	19.44	2071	20.79	2132	22.14	2190	23.50	2248	24.85
3800	4674	1762	15.29	1831	16.58	1898	17.91	1962	19.23	2024	20.57	2083	21.88	2144	23.30	2202	24.71	2260	26.12
4000	4920	1779	16.20	1849	17.59	1915	18.95	1979	20.34	2041	21.74	2100	23.11	2158	24.52	2215	25.97	2272	27.42
4200	5166	1798	17.19	1867	18.62	1933	20.05	1997	21.50	2058	22.93	2118	24.40	2175	25.84	2230	27.30	2285	28.76
4400	5412	1820	18.30	1886	19.72	1951	21.18	2015	22.70	2076	24.19	2135	25.69	2193	27.23	2248	28.74	2302	30.24
4600	5658	1842	19.45	1907	20.90	1970	22.37	2032	23.89	2094	25.49	2153	27.05	2210	28.62	2265	30.20	2320	31.79
4800	5904	1864	20.63	1929	22.16	1992	23.70	2052	25.22	2111	26.78	2171	28.44	2228	30.07	2282	31.70	2337	33.33
5000	6150	1886	21.85	1951	23.45	2013	25.03	2073	26.62	2131	28.21	2188	29.83	2246	31.57	2300	33.26	2355	34.96
5200	6396	1911	23.23	1974	24.82	2036	26.47	2095	28.10	2153	29.76	2209	31.41	2263	33.05	2318	34.84	2373	36.62
5400	6642	1937	24.70	1997	26.24	2058	27.92	2117	29.62	2175	31.35	2230	33.03	2284	34.74	2337	36.50	2390	38.27
5600	6888	1963	26.22	2023	27.84	2081	29.46	2140	31.22	2197	32.99	2252	34.74	2306	36.52	2358	38.28	2409	40.05
5800	7134	1989	27.80	2049	29.49	2107	31.19	2162	32.83	2219	34.67	2274	36.49	2328	38.34	2379	40.18	2431	42.01
6000	7380	2015	29.42	2075	31.20	2133	32.98	2188	34.70	2241	36.40	2296	38.29	2350	40.22	2401	42.10	2452	43.98
6200	7626	2042	31.15	2101	32.97	2159	34.83	2214	36.62	2267	38.40	2319	40.19	2372	42.14	2423	44.09	2474	46.04
6400	7872	2069	32.93	2128	34.83	2185	36.73	2240	38.61	2293	40.46	2344	42.28	2395	44.16	2445	46.16	2496	48.16
6600	8118	2096	34.77	2155	36.76	2210	38.71	2266	40.65	2319	42.58	2370	44.48	2420	46.39	2470	48.38	2519	50.38
6800	8364	2126	36.71	2182	38.75	2237	40.75	2292	42.75	2345	44.76	2396	46.74	2446	48.73	2494	50.66	2541	52.60

\*SP - Static Pressure Inches H<sub>2</sub>O   \*OV - Outlet Velocity (Feet Per Minute)   \*CFM - Cubic Feet Per Minute

Inlet Size - 17" Dia. Outside  
Outlet Size - 14⅞" x 16⅞" Outside  
Wheel Diameter - 29⅝"  
Tip Speed = 7.76 x RPM

Inlet Area - 1.58 Sq. Ft. Outside  
Outlet Area - 1.55 Sq. Ft. Inside  
Wheel Circumference - 7.76 Ft.  
Max Safe Fan Speed - 1935 RPM

Power Rating (BHP) does not include transmission losses. Performance Ratings do not include the effects of appurtenances (accessories). All capacities based on standard air (density .075 #/cu. ft. 70°F. 29.92" Hg. Bar.). Performances shown in the color zone are those operating at maximum static efficiency. Performances shown above colored line are those operating within optimum operation range. Performance certified is for installation type D - ducted inlet, ducted outlet.

SP*,>>		1		2		3		4		5		6		7		8		9	
OV*	CFM*	RPM	BHP	RPM	BHP	RPM	BHP	RPM	BHP	RPM	BHP	RPM	BHP	RPM	BHP	RPM	BHP	RPM	BHP
1000	1580	476	1.01	651	1.68														
1200	1896	491	1.13	661	1.87	797	2.61	912	3.36	1014	4.13	1106	4.91	1190	5.69				
1400	2212	508	1.28	672	2.07	805	2.87	920	3.69	1022	4.53	1114	5.38	1199	6.24	1277	7.11	1351	7.99
1600	2528	528	1.46	687	2.30	816	3.15	929	4.04	1031	4.95	1122	5.86	1207	6.80	1286	7.74	1360	8.70
1800	2844	550	1.66	703	2.55	829	3.47	940	4.41	1039	5.37	1131	6.37	1215	7.36	1294	8.38	1368	9.41
2000	3160	574	1.91	721	2.84	844	3.81	951	4.80	1050	5.84	1140	6.88	1224	7.96	1303	9.05	1376	10.13
2200	3476	600	2.19	740	3.16	860	4.18	967	5.26	1061	6.32	1151	7.44	1234	8.58	1311	9.72	1385	10.89
2400	3792	628	2.49	762	3.54	878	4.60	982	5.72	1076	6.86	1161	8.00	1244	9.21	1321	10.43	1394	11.67
2600	4108	657	2.84	785	3.96	897	5.06	998	6.22	1092	7.45	1177	8.67	1255	9.88	1332	11.17	1404	12.47
2800	4424	687	3.24	808	4.41	917	5.56	1016	6.78	1107	8.04	1192	9.34	1270	10.63	1343	11.94	1415	13.31
3000	4740	718	3.68	832	4.90	940	6.15	1036	7.40	1124	8.69	1208	10.06	1286	11.44	1358	12.80	1427	14.19
3200	5056	750	4.18	861	5.47	963	6.77	1055	8.04	1143	9.42	1223	10.79	1301	12.25	1374	13.71	1442	15.16
3400	5372	783	4.73	889	6.07	986	7.43	1078	8.80	1163	10.20	1242	11.64	1317	13.11	1389	14.63	1458	16.19
3600	5688	816	5.34	918	6.73	1010	8.15	1101	9.61	1182	11.00	1261	12.52	1335	14.06	1405	15.61	1473	17.22
3800	6004	849	6.00	948	7.45	1037	8.94	1124	10.45	1205	11.95	1281	13.47	1354	15.07	1422	16.65	1489	18.32
4000	6320	883	6.73	978	8.23	1066	9.81	1148	11.37	1228	12.95	1302	14.50	1373	16.12	1441	17.79	1506	19.49
4200	6636	917	7.52	1009	9.08	1094	10.70	1172	12.34	1251	13.99	1324	15.62	1393	17.25	1461	19.02	1525	20.76
4400	6952	952	8.38	1041	10.01	1123	11.67	1199	13.37	1275	15.12	1347	16.81	1415	18.51	1480	20.25	1544	22.09
4600	7268	988	9.34	1073	11.01	1153	12.73	1228	14.52	1298	16.26	1371	18.10	1438	19.87	1501	21.61	1564	23.49
4800	7584	1024	10.36	1106	12.09	1183	13.86	1256	15.69	1324	17.53	1394	19.41	1461	21.28	1524	23.12	1583	24.91
5000	7900	1060	11.46	1139	13.25	1213	15.04	1285	16.95	1352	18.87	1418	20.81	1484	22.74	1546	24.64	1606	26.58
5200	8216	1096	12.64	1172	14.48	1245	16.36	1315	18.321	1381	20.31	1442	22.25	1507	24.27	1570	26.32	1628	28.26
5400	8532	1132	13.89	1205	15.78	1277	17.76	1344	9.72	1409	21.78	1470	23.83	1531	25.90	1593	28.01	1651	30.05
5600	8848	1169	15.27	1239	17.20	1309	19.23	1374	21.23	1439	23.41	1499	25.52	1555	27.58	1616	29.77	1675	31.97
5800	9164	1206	16.73	1273	18.70	1342	20.82	1405	22.86	1468	25.07	1527	27.24	1584	29.46	1640	31.64	1698	33.90
6000	9480	1242	18.24	1307	20.28	1374	22.45	1437	24.61	1497	26.79	1556	29.08	1612	31.36	1665	33.61	1722	35.95
6200	9796	1279	19.89	1342	21.97	1407	24.21	1469	26.45	1527	28.65	1585	31.01	1640	33.34	1693	35.70	1745	38.01
6400	10112	1316	21.63	1378	23.81	1440	26.05	1501	28.38	1558	30.65	1615	33.07	1669	35.46	1721	37.86	1771	40.27
6600	10428	1354	23.53	1414	25.74	1474	28.05	1533	30.39	1589	32.73	1644	35.15	1698	37.66	1750	40.18	1799	42.62
6800	10744	1391	25.48	1450	27.78	1507	30.08	1566	32.56	1621	34.96	1674	37.38	1728	40.01	1778	42.51	1827	45.06



Inlet Size - 19" Dia. Outside  
Outlet Size - 16" x 18⅜" Outside  
Wheel Diameter - 33"  
Tip Speed = 8.64 x RPM

Inlet Area - 1.97 Sq. Ft. Outside  
Outlet Area - 1.92 Sq. Ft. Inside  
Wheel Circumference - 8.64 Ft.  
Max Safe Fan Speed - 1735 RPM

Power Rating (BHP) does not include transmission losses. Performance Ratings do not include the effects of appurtenances (accessories). All capacities based on standard air (density .075 #/cu. ft. 70°F. 29.92" Hg. Bar.). Performances shown in the color zone are those operating at maximum static efficiency. Performances shown above colored line are those operating within optimum operation range. Performance certified is for installation type D - ducted inlet, ducted outlet.

SP*:>>		1		2		3		4		5		6		7		8		9	
OV*	CFM*	RPM	BHP	RPM	BHP	RPM	BHP	RPM	BHP	RPM	BHP	RPM	BHP	RPM	BHP	RPM	BHP	RPM	BHP
1000	1950	427	1.41	584	2.30														
1200	2340	440	1.56	593	2.53	715	3.50	819	4.47	910	5.45	992	6.43	1068	7.44			1213	10.35
1400	2730	456	1.76	602	2.77	723	3.83	826	4.88	917	5.94	1000	7.03	1076	8.12	1147	9.24		
1600	3120	473	1.97	616	3.07	732	4.17	834	5.31	925	6.47	1007	7.62	1083	8.81	1154	10.01	1220	11.21
1800	3510	493	2.24	630	3.38	744	4.57	843	5.76	933	7.00	1015	8.25	1091	9.52	1161	10.79	1228	12.10
2000	3900	514	2.54	646	3.74	757	4.99	853	6.25	942	7.56	1023	8.89	1098	10.24	1169	11.62	1235	13.00
2200	4290	537	2.89	663	4.14	771	5.45	867	6.81	952	8.17	1032	9.57	1107	11.01	1176	12.44	1243	13.93
2400	4680	562	3.28	683	4.62	787	5.97	881	7.40	965	8.83	1042	10.28	1116	11.80	1185	13.32	1251	14.89
2600	5070	588	3.72	703	5.13	804	6.54	895	8.02	979	9.55	1055	11.08	1126	12.63	1195	14.25	1260	15.88
2800	5460	615	4.22	724	5.70	822	7.16	911	8.71	993	10.30	1069	11.93	1139	13.55	1205	15.20	1270	16.93
3000	5850	643	4.77	745	6.31	842	7.88	928	9.46	1008	11.11	1083	12.81	1153	14.53	1218	16.25	1280	18.00
3200	6240	671	5.38	770	7.00	863	8.67	946	10.27	1025	12.01	1097	13.73	1167	15.55	1232	17.37	1294	19.22
3400	6630	700	6.07	796	7.77	884	9.50	966	11.20	1042	12.95	1113	14.74	1181	16.61	1246	18.53	1307	20.44
3600	7020	730	6.83	822	8.59	905	10.38	986	12.18	1060	13.97	1131	15.88	1197	17.78	1260	19.73	1321	21.74
3800	7410	759	7.64	848	9.46	928	11.33	1007	13.24	1080	15.12	1148	17.02	1214	19.04	1275	21.01	1335	23.08
4000	7800	789	8.54	875	10.43	954	12.40	1028	14.36	1100	16.33	1166	18.26	1231	20.34	1292	22.42	1350	24.51
4200	8190	819	9.50	903	11.49	979	13.51	1049	15.54	1121	17.64	1187	19.69	1249	21.74	1309	23.89	1367	26.09
4400	8580	851	10.59	931	12.62	1005	14.72	1074	16.87	1142	19.02	1207	21.15	1268	23.26	1327	25.46	1384	27.73
4600	8970	883	11.77	960	13.87	1032	16.03	1099	18.24	1163	20.45	1228	22.72	1288	24.91	1345	27.09	1401	29.41
4800	9360	915	13.03	989	15.20	1058	17.38	1125	19.73	1185	21.97	1249	24.35	1309	26.67	1365	28.93	1419	31.22
5000	9750	947	14.38	1018	16.60	1085	18.85	1150	21.25	1211	23.67	1270	26.06	1329	28.45	1386	30.89	1439	33.24
5200	10140	979	15.82	1048	18.14	1114	20.50	1177	22.95	1236	25.41	1291	27.82	1350	30.36	1406	32.873	1459	35.34
5400	10530	1012	17.41	1078	19.78	1142	22.19	1203	24.68	1262	27.28	1316	29.77	1371	32.34	1427	4.98	1480	37.58
5600	10920	1044	19.05	1108	21.50	1171	24.03	1229	26.49	1287	29.17	1342	31.87	1393	34.46	1448	37.18	1500	39.84
5800	11310	1077	20.85	1138	23.33	1200	25.96	1257	28.52	1314	31.28	1367	33.98	1418	36.72	1469	39.45	1521	42.24
6000	11700	1110	22.76	1168	25.25	1229	27.99	1285	30.64	1340	33.42	1393	36.26	1443	39.07	1490	41.80	1542	44.74
6200	12090	1143	24.78	1200	27.39	1258	30.13	1314	32.93	1366	35.65	1419	38.64	1468	41.50	1516	44.46	1563	47.31
6400	12480	1176	26.92	1232	29.64	1288	32.44	1342	35.26	1393	38.05	1445	41.11	1494	44.12	1541	47.12	1585	50.02
6600	12870	1209	29.19	1263	31.93	1318	34.86	1371	37.77	1422	40.72	1471	43.68	1520	46.83	1566	49.89	1610	52.92
6800	13260	1243	31.65	1295	34.42	1348	37.40	1400	40.39	1450	43.41	1498	46.44	1546	49.65	1592	52.85	1636	56.02

SP*:>>		10		11		12		13		14		15		16		17		18	
OV*	CFM*	RPM	BHP	RPM	BHP	RPM	BHP	RPM	BHP	RPM	BHP	RPM	BHP	RPM	BHP	RPM	BHP	RPM	BHP
2000	3900	1298	14.40	1358	15.83														
2200	4290	1305	15.40	1365	16.91	1422	18.43	1477	19.97	1530	21.53	1580	23.05	1630	24.66	1677	26.26	1724	27.85
2400	4680	1313	16.45	1373	18.05	1430	19.66	1484	21.25	1537	22.90	1588	24.55	1637	26.20	1684	27.89	1731	29.57
2600	5070	1321	17.51	1380	19.18	1437	20.87	1492	22.59	1545	24.33	1595	26.03	1644	27.77	1691	29.54	1738	31.31
2800	5460	1331	18.65	1389	20.38	1445	22.14	1499	23.92	1552	25.75	1603	27.58	1652	29.41	1699	31.27	1746	33.14
3000	5850	1341	19.82	1399	21.65	1455	23.50	1508	25.34	1560	27.23	1610	29.11	1660	31.08	1707	33.00	1753	34.93
3200	6240	1352	21.05	1409	22.94	1464	24.85	1518	26.82	1569	28.76	1619	30.74	1667	32.72	1714	34.77	1761	36.81
3400	6630	1365	22.37	1421	24.33	1474	26.27	1527	28.29	1579	30.37	1629	32.45	1677	34.52	1723	36.62	1769	38.71
3600	7020	1379	23.77	1434	25.78	1487	27.82	1538	29.88	1589	32.01	1638	34.13	1686	36.29	1732	38.48	1778	40.67
3800	7410	1393	25.21	1448	27.33	1501	29.47	1552	31.62	1600	33.71	1648	35.90	1696	38.16	1742	40.44	1788	42.73
4000	7800	1407	26.70	1462	28.92	1515	31.16	1565	33.36	1614	35.61	1661	37.84	1707	40.11	1752	42.43	1797	44.75
4200	8190	1421	28.23	1476	30.55	1529	32.90	1579	35.20	1628	37.55	1675	39.88	1720	42.19	1763	44.54	1807	46.88
4400	8580	1438	29.97	1490	32.23	1542	34.63	1593	37.09	1642	39.54	1688	41.91	1734	44.38	1778	46.82	1821	49.27
4600	8970	1456	31.83	1507	34.14	1557	36.52	1607	39.02	1655	41.51	1702	44.05	1748	46.63	1792	49.18	1835	51.72
4800	9360	1473	33.69	1525	36.18	1574	38.60	1622	41.08	1669	43.60	1716	46.25	1762	48.93	1805	51.54	1848	54.14
5000	9750	1491	35.68	1542	38.21	1591	40.75	1639	43.34	1684	45.82	1730	48.49	1775	51.20	1818	53.95	1862	56.70
5200	10140	1509	37.74	1559	40.31	1609	43.03	1656	45.66	1701	48.25	1746	50.96	1790	53.69	1833	56.50	1876	59.32
5400	10530	1530	40.11	1578	42.63	1626	45.31	1673	48.05	1719	50.83	1763	53.57	1805	56.24	1848	59.11	1890	61.99
5600	10920	1550	42.49	1598	45.13	1644	47.73	1691	50.59	1736	53.40	1780	56.25	1822	59.03	1863	61.88	1904	64.72
5800	11310	1571	45.03	1618	47.71	1664	50.44	1708	53.11	1753	56.04	1797	59.00	1840	61.99	1880	64.90	1921	67.81
6000	11700	1591	47.57	1639	50.47	1684	53.23	1728	56.02	1771	58.84	1815	61.92	1857	64.93	1898	67.95	1938	70.97
6200	12090	1612	50.28	1659	53.22	1705	56.20	1748	59.02	1791	61.96	1832	64.82	1874	67.94	1914	71.08	1955	74.21
6400	12480	1634	53.17	1680	56.15	1725	59.17	1769	62.21	1811	65.18	1852	68.15	1892	71.14	1932	74.39	1973	77.64
6600	12870	1655	56.07	1701	59.17	1745	62.34	1790	65.50	1831	68.49	1872	71.58	1912	74.68	1951	77.86	1990	81.03
6800	13260	1678	59.13	1723	62.40	1766	65.59	1810	68.78	1852	72.00	1892	75.11	1932	78.33	1970	81.48	2008	84.63

\*SP - Static Pressure Inches H<sub>2</sub>O   \*OV - Outlet Velocity (Feet Per Minute)   \*CFM - Cubic Feet Per Minute

Inlet Size - 21" Dia. Outside  
Outlet Size - 17⅞" x 20¼" Outside  
Wheel Diameter - 36½"  
Tip Speed = 9.56 x RPM

Inlet Area - 2.40 Sq. Ft. Outside  
Outlet Area - 2.35 Sq. Ft. Inside  
Wheel Circumference - 9.56 Ft.  
Max Safe Fan Speed - 1570 RPM

Power Rating (BHP) does not include transmission losses. Performance Ratings do not include the effects of appurtenances (accessories). All capacities based on standard air (density .075 #/cu. ft. 70°F. 29.92" Hg. Bar.). Performances shown in the color zone are those operating at maximum static efficiency. Performances shown above colored line are those operating within optimum operation range. Performance certified is for installation type D - ducted inlet, ducted outlet.

SP*,>>		1		2		3		4		5		6		7		8		9	
OV*	CFM*	RPM	BHP	RPM	BHP	RPM	BHP	RPM	BHP	RPM	BHP	RPM	BHP	RPM	BHP	RPM	BHP	RPM	BHP
1000	2380	379	0.64	520	1.30														
1200	2856	392	0.79	526	1.53	636	2.35												
1400	3332	406	0.97	535	1.78	641	2.68	735	3.65	817	4.64								
1600	3808	423	1.19	547	2.07	650	3.05	740	4.09	822	5.18	897	6.32	965	7.47				
1800	4284	441	1343	561	2.41	660	3.45	748	4.57	828	5.75	902	6.98	970	8.22	1034	9.52		
2000	4760	461	1.72	576	2.78	673	3.91	758	5.10	836	6.36	907	7.64	976	9.02	1039	10.38	1099	11.80
2200	5236	482	2.06	593	3.21	687	4.42	770	5.69	846	7.02	916	8.38	981	9.79	1045	11.29	1104	12.77
2400	5712	505	2.45	610	3.68	702	4.97	784	6.34	857	7.72	926	9.17	991	10.69	1051	12.20	1110	13.80
2600	6188	528	2.89	630	4.22	718	5.58	798	7.02	870	8.49	936	9.99	1001	11.61	1061	13.23	1118	14.89
2800	6664	551	3.38	650	4.81	735	6.26	813	7.77	884	9.33	950	10.94	1011	12.56	1071	14.29	1127	16.02
3000	7140	576	3.96	670	5.44	753	7.00	829	8.59	899	10.24	964	11.93	1025	13.67	1081	15.38	1137	17.21
3200	7616	601	4.60	692	6.16	773	7.82	846	9.49	915	11.23	978	12.96	1039	14.82	1095	16.64	1148	18.49
3400	8092	626	5.30	715	6.97	793	8.70	863	10.44	931	12.27	993	14.09	1053	16.02	1109	17.96	1162	19.91
3600	8568	652	6.09	738	7.84	813	9.63	883	11.51	948	13.40	1010	15.35	1067	17.26	1123	19.32	1176	21.39
3800	9044	678	6.95	761	8.77	834	10.65	903	12.64	965	14.59	1026	16.62	1083	18.66	1137	20.72	1190	22.91
4000	9520	705	7.92	785	9.81	857	11.81	923	13.84	984	15.88	1043	18.00	1100	20.17	1153	22.30	1204	24.49
4200	9996	731	8.94	809	10.92	879	13.00	943	15.10	1004	17.28	1060	19.43	1116	21.68	1169	23.95	1219	26.20
4400	10472	758	10.07	834	12.16	902	14.31	965	16.52	1024	18.75	1080	21.03	1133	23.32	1186	25.71	1236	28.09
4600	10948	786	11.29	859	13.49	926	15.74	987	18.01	1045	20.35	1100	22.72	1152	25.11	1203	27.55	1252	29.99
4800	11424	815	12.63	885	14.96	949	17.21	1010	19.64	1065	21.96	1120	24.48	1171	26.95	1219	29.39	1269	32.03
5000	11900	843	14.03	910	16.46	973	18.81	1033	21.35	1087	23.77	1141	26.39	1191	28.93	1239	31.51	1286	34.14
5200	12376	872	15.58	936	18.12	997	20.52	1056	23.16	1110	25.73	1161	28.31	1211	30.99	1259	33.71	1304	36.37
5400	12852	901	17.24	963	19.94	1023	22.47	1079	25.05	1133	27.79	1183	30.46	1232	33.22	1279	36.00	1324	38.80
5600	13328	930	19.01	989	21.81	1048	24.45	1103	27.12	1156	29.95	1205	32.69	1252	35.46	1299	38.38	1344	41.32
5800	13804	959	20.89	1015	23.78	1073	26.54	1127	29.28	1179	32.20	1228	35.10	1274	37.95	1320	40.95	1364	43.93
6000	14280	989	22.97	1042	25.94	1099	28.82	1151	31.57	1202	34.56	1251	37.62	1296	40.53	1340	43.51	1384	46.65
6200	14756	1018	25.10	1069	28.22	1125	31.22	1176	34.06	1226	37.11	1274	40.25	1319	43.32	1362	46.37	1405	49.56
6400	15232	1047	27.36	1097	30.63	1151	33.74	1202	36.77	1250	39.77	1297	42.99	1342	46.21	1384	49.32	1425	52.47
6600	15708	1077	29.83	1125	33.14	1177	36.39	1227	39.50	1274	42.56	1320	45.84	1364	49.12	1407	52.48	1447	55.69



SIZE  
23

Inlet Size - 23" Dia. Outside  
Outlet Size - 19½" x 22¼" Outside  
Wheel Diameter - 40"  
Tip Speed = 10.47 x RPM

Inlet Area - 2.88 Sq. Ft. Outside  
Outlet Area - 2.85 Sq. Ft. Inside  
Wheel Circumference - 10.47 Ft.  
Max Safe Fan Speed - 1435 RPM

Power Rating (BHP) does not include transmission losses. Performance Ratings do not include the effects of appurtenances (accessories). All capacities based on standard air (density .075 #/cu. ft. 70°F. 29.92" Hg. Bar.). Performances shown in the color zone are those operating at maximum static efficiency. Performances shown above colored line are those operating within optimum operation range. Performance certified is for installation type D - ducted inlet, ducted outlet.

SP*:>>		1		2		3		4		5		6		7		8		9	
OV*	CFM*	RPM	BHP	RPM	BHP	RPM	BHP	RPM	BHP	RPM	BHP	RPM	BHP	RPM	BHP	RPM	BHP	RPM	BHP
1000	2880	346	0.77	474	1.57														
1200	3456	358	0.96	480	1.85	580	2.83	666	3.88										
1400	4032	372	1.18	489	2.16	585	3.23			746	5.62								
1600	4608	387	1.44	500	2.52	594	3.70	675	4.93	751	6.28	818	7.62	881	9.04				
1800	5184	404	1.75	513	2.92	603	4.18	684	5.55	755	6.93	823	8.42	886	9.96	944	11.51	998	13.07
2000	5760	422	2.10	527	3.38	615	4.74	693	6.19	764	7.71	828	9.24	891	10.90	949	12.57	1003	14.25
2200	6336	442	2.52	542	3.90	628	5.36	704	6.90	773	8.50	837	10.16	896	11.85	954	13.65	1008	15.45
2400	6912	463	3.00	558	4.47	642	6.04	716	7.67	783	9.35	846	11.11	905	12.93	960	14.77	1013	16.67
2600	7488	484	3.53	576	5.12	657	6.79	729	8.50	796	10.33	856	12.13	914	14.04	969	16.01	1021	18.02
2800	8064	506	4.15	595	5.85	672	7.60	743	9.42	808	11.11	868	13.25	924	15.23	978	17.29	1030	19.42
3000	8640	528	4.83	614	6.64	689	8.51	758	10.43	822	12.42	881	14.46	936	16.53	988	18.65	1039	20.87
3200	9216	551	5.61	634	7.52	707	9.49	774	11.54	836	13.60	894	15.73	949	17.94	1001	20.19	1049	22.40
3400	9792	575	6.50	655	8.50	726	10.59	790	12.70	852	14.93	908	17.10	962	19.40	1013	21.73	1062	24.14
3600	10368	598	7.44	676	9.55	745	11.75	808	13.99	867	16.28	923	18.60	976	20.98	1026	23.39	1075	25.94
3800	10944	622	8.50	698	10.73	764	12.98	826	15.35	883	17.74	939	20.23	991	22.70	1040	25.19	1087	27.73
4000	11520	647	9.69	719	11.95	785	14.39	845	16.84	901	19.34	954	21.87	1006	24.50	1054	27.06	1101	29.74
4200	12096	671	10.94	742	13.36	806	15.89	864	18.42	919	21.02	970	23.62	1021	26.36	1069	29.08	1115	31.83
4400	12672	696	12.34	765	14.88	827	17.48	884	20.14	938	22.86	989	25.63	1037	28.39	1085	31.26	1130	34.09
4600	13248	722	13.84	788	16.50	848	19.16	904	21.94	957	24.79	1007	27.65	1054	30.52	1100	33.44	1145	36.42
4800	13824	748	15.45	811	18.24	870	21.01	925	23.92	976	26.81	1026	29.86	1072	32.80	1116	35.78	1161	38.94
5000	14400	775	17.24	835	20.15	892	22.97	946	26.00	996	29.00	1044	32.07	1091	35.28	1134	38.33	1176	41.45
5200	14976	801	19.10	859	22.19	915	25.14	968	28.28	1017	31.38	1063	34.47	1109	37.76	1152	40.97	1194	44.30
5400	15552	828	21.16	883	24.35	938	27.44	989	30.58	1038	33.88	1083	37.06	1128	40.44	1171	43.83	1212	47.22
5600	16128	854	23.28	908	26.73	961	29.87	1011	33.09	1059	36.50	1104	39.86	1147	43.24	1190	46.81	1230	50.25
5800	16704	881	25.62	932	29.16	985	32.53	1033	35.73	1080	39.24	1125	42.79	1167	46.26	1208	49.78	1249	53.51
6000	17280	908	28.11	957	31.82	1008	35.23	1056	38.64	1102	42.21	1146	45.85	1187	49.38	1227	52.99	1267	56.77
6200	17856	935	30.76	981	34.53	1032	38.18	1079	41.69	1124	45.32	1167	49.04	1208	52.76	1247	56.43	1286	60.28
6400	18432	962	33.56	1007	37.48	1056	41.27	1102	44.89	1146	48.57	1189	52.50	1229	56.27	1268	60.14	1305	63.91
6600	19008	989	36.53	1033	40.58	1080	44.53	1125	48.25	1168	51.98	1210	55.96	1250	59.93	1289	63.99	1325	67.80

SP*:>>		10		11		12		13		14		15		16		17		18	
OV*	CFM*	RPM	BHP	RPM	BHP	RPM	BHP	RPM	BHP	RPM	BHP	RPM	BHP	RPM	BHP	RPM	BHP	RPM	BHP
2000	5760	1055	15.99	1104	17.75														
2200	6336	1060	17.32	1109	19.19	1156	21.10	1201	23.03										
2400	6912	1065	18.67	1114	20.66	1161	22.69	1206	24.74	1249	26.79	1291	28.90	1331	30.99				
2600	7488	1070	20.03	1119	22.15	1166	24.30	1211	26.48	1254	28.65	1296	30.88	1336	33.09	1375	35.35	1413	37.61
2800	8064	1079	21.57	1125	23.69	1171	25.94	1216	28.24	1259	30.53	1301	32.89	1341	35.21	1380	37.59	1418	39.98
3000	8640	1088	23.14	1134	25.39	1179	27.73	1221	30.00	1264	32.44	1306	34.92	1346	37.37	1385	39.87	1423	42.37
3200	9216	1097	24.76	1143	27.13	1188	29.60	1230	32.00	1271	34.45	1311	36.97	1351	39.55	1390	42.18	1428	44.80
3400	9792	1107	26.46	1152	28.92	1197	31.52	1239	34.04	1280	36.62	1320	39.26	1358	41.86	1396	44.55	1433	47.25
3600	10368	1120	28.39	1164	30.94	1206	33.48	1248	36.13	1289	38.84	1329	41.61	1367	44.33	1403	47.09	1440	49.85
3800	10944	1133	30.40	1176	33.00	1218	35.68	1258	38.34	1298	41.11	1338	44.01	1376	46.85	1412	49.74	1449	52.62
4000	11520	1146	32.47	1189	35.21	1231	38.04	1270	40.74	1309	43.59	1347	46.46	1385	49.43	1421	52.44	1458	55.46
4200	12096	1159	34.61	1202	37.50	1244	40.46	1283	43.30	1322	46.29	1359	49.21	1394	52.05	1430	55.20	1467	58.35
4400	12672	1173	36.92	1215	39.85	1256	42.86	1296	45.94	1334	48.96	1371	52.02	1407	55.10	1441	58.20	1476	61.29
4600	13248	1188	39.41	1230	42.49	1270	45.54	1309	48.65	1343	51.81	1384	55.01	1420	58.24	1454	61.42	1488	64.59
4800	13824	1204	42.09	1245	45.22	1284	48.31	1322	51.44	1360	54.75	1397	58.09	1433	61.45	1467	64.76	1501	68.08
5000	14400	1219	44.76	1260	48.05	1299	51.28	1337	54.57	1373	57.76	1410	61.25	1446	64.76	1480	68.22	1514	71.67
5200	14976	1234	47.52	1275	50.96	1314	54.35	1352	57.79	1388	61.13	1423	64.49	1459	68.15	1493	71.74	1527	75.34
5400	15552	1251	50.56	1290	53.97	1329	57.52	1367	61.12	1403	64.61	1438	68.11	1472	71.62	1506	75.36	1540	79.10
5600	16128	1269	53.76	1306	57.20	1345	60.92	1382	64.54	1418	68.19	1453	71.85	1487	75.51	1520	79.24	1553	82.96
5800	16704	1287	57.07	1324	60.67	1360	64.28	1397	68.06	1433	71.87	1468	75.68	1502	79.50	1535	83.29	1567	87.08
6000	17280	1306	60.63	1342	64.26	1378	68.07	1413	71.84	1449	75.81	1483	79.63	1517	83.60	1550	87.54	1582	91.49
6200	17856	1324	64.17	1361	68.12	1396	71.95	1430	75.79	1464	79.70	1499	83.85	1532	87.81	1565	91.91	1597	96.01
6400	18432	1343	67.99	1379	71.96	1414	75.95	1448	79.96	1481	83.96	1514	88.01	1548	92.31	1580	96.16	1612	100.0
6600	19008	1362	71.94	1398	76.08	1433	80.25	1466	84.26	1499	88.43	1531	92.58	1563	96.75	1595	101.1	1627	105.5

\*SP - Static Pressure Inches H<sub>2</sub>O   \*OV - Outlet Velocity (Feet Per Minute)   \*CFM - Cubic Feet Per Minute

SIZE  
26

Inlet Size - 26" Dia. Outside  
Outlet Size - 21<sup>15</sup>/<sub>16</sub>" x 25<sup>3</sup>/<sub>16</sub>" Outside  
Wheel Diameter - 45<sup>1</sup>/<sub>8</sub>"  
Tip Speed = 11.81 x RPM

Inlet Area - 3.69 Sq. Ft. Outside  
Outlet Area - 3.68 Sq. Ft. Inside  
Wheel Circumference - 11.81 Ft.  
Max Safe Fan Speed - 1270 RPM

Power Rating (BHP) does not include transmission losses. Performance Ratings do not include the effects of appurtenances (accessories). All capacities based on standard air (density .075 #/cu. ft. 70°F. 29.92" Hg. Bar.). Performances shown in the color zone are those operating at maximum static efficiency. Performances shown above colored line are those operating within optimum operation range. Performance certified is for installation type D - ducted inlet, ducted outlet.

SP*,>>		1		2		3		4		5		6		7		8		9	
OV*	CFM*	RPM	BHP	RPM	BHP	RPM	BHP	RPM	BHP	RPM	BHP	RPM	BHP	RPM	BHP	RPM	BHP	RPM	BHP
1000	3710	307	0.99	421	2.02														
1200	4452	318	1.24	426	2.38	515	3.65	590	4.97										
1400	5194	331	1.53	434	2.78	519	4.16	595	5.67	661	7.20								
1600	5936	344	1.86	445	3.27	527	4.76	599	6.35	666	8.07	726	9.82	781	11.60				
1800	6678	360	2.27	456	3.78	535	5.38	607	7.15	670	8.93	730	10.83	786	12.81	837	14.78	885	16.78
2000	7420	377	2.75	469	4.39	547	6.14	615	7.97	678	9.92	735	11.91	790	14.00	842	16.18	890	18.34
2200	8162	394	3.27	483	5.08	558	6.92	625	8.84	686	10.94	743	13.09	795	15.25	846	17.54	894	19.86
2400	8904	413	3.91	497	5.81	571	7.82	637	9.94	696	12.09	751	14.32	803	16.63	852	19.02	899	21.48
2600	9646	432	4.61	513	6.65	585	8.83	648	10.99	707	13.32	760	15.64	812	18.14	860	20.61	906	23.19
2800	10388	451	5.39	530	7.60	598	9.85	661	12.21	719	14.67	772	17.16	821	19.67	868	22.26	914	25.00
3000	11130	472	6.33	547	8.63	614	11.07	675	13.56	731	16.09	783	18.69	832	21.38	878	24.10	922	26.86
3200	11872	492	7.33	566	9.82	630	12.35	689	14.98	744	17.64	795	20.36	844	23.23	889	26.04	932	28.92
3400	12614	514	8.52	584	11.06	647	13.77	703	16.46	758	19.35	808	22.18	855	25.07	901	28.15	943	31.12
3600	13356	535	9.77	603	12.45	664	15.29	720	18.20	771	21.07	821	24.09	868	27.17	912	30.24	955	33.49
3800	14098	557	11.19	623	14.00	682	16.96	736	19.96	786	23.00	835	26.18	881	29.36	924	32.52	967	35.95
4000	14840	578	12.67	642	15.60	700	18.74	753	21.90	803	25.17	849	28.36	895	31.75	938	35.10	978	38.38
4200	15582	601	14.41	663	17.48	719	20.71	770	23.95	819	27.35	864	30.69	909	34.24	951	37.68	992	41.27
4400	16324	623	16.19	683	19.43	738	22.80	788	26.20	836	29.74	881	33.30	923	36.83	965	40.05	1005	44.14
4600	17066	646	18.13	704	21.59	757	25.02	807	28.66	853	32.25	897	35.92	939	39.67	979	43.38	1019	47.25
4800	17808	670	20.31	725	23.89	777	27.47	826	31.27	870	34.68	914	38.79	955	42.63	994	46.48	1033	50.48
5000	18550	694	22.65	747	26.45	797	30.06	845	34.02	889	37.87	931	41.79	972	45.85	1010	49.78	1047	53.82
5200	19292	718	25.16	768	29.07	817	32.84	864	36.91	907	40.88	948	44.92	988	49.06	1027	53.36	1063	57.46
5400	20034	741	27.74	790	31.96	838	35.90	883	39.94	926	44.17	966	48.30	1005	52.56	1043	56.93	1079	61.24
5600	20776	766	30.72	812	35.03	859	39.14	903	43.27	945	47.61	985	51.99	1022	56.20	1060	60.80	1096	65.34
5800	21518	790	33.78	834	38.29	880	42.55	923	46.77	964	51.21	1004	55.85	1041	60.30	1077	64.83	1113	69.59
6000	22260	814	37.03	856	41.73	901	46.14	943	50.49	984	55.15	1023	59.88	1059	64.40	1094	69.00	1130	74.01
6200	23002	838	40.49	879	45.46	923	50.08	964	54.55	1003	59.09	1042	64.09	1078	68.85	1112	73.50	1146	78.38
6400	23744	862	44.15	902	49.28	944	54.06	985	58.81	1023	63.39	1061	68.47	1097	73.48	1131	78.37	1164	83.32
6600	24486	887	48.18	925	53.30	966	58.41	1006	63.28	1043	67.92	1080	73.03	1116	78.30	1150	83.44	1182	88.41



Inlet Size - 29" Dia. Outside  
Outlet Size - 24½" x 28" Outside  
Wheel Diameter - 50½"  
Tip Speed = 13.22 x RPM

Inlet Area - 4.59 Sq. Ft. Outside  
Outlet Area - 4.58 Sq. Ft. Inside  
Wheel Circumference - 13.22 Ft.  
Max Safe Fan Speed - 1135 RPM

Power Rating (BHP) does not include transmission losses. Performance Ratings do not include the effects of appurtenances (accessories). All capacities based on standard air (density .075 #/cu. ft. 70°F. 29.92" Hg. Bar.). Performances shown in the color zone are those operating at maximum static efficiency. Performances shown above colored line are those operating within optimum operation range. Performance certified is for installation type D - ducted inlet, ducted outlet.

SP*:>>		1		2		3		4		5		6		7		8		9	
OV*	CFM*	RPM	BHP	RPM	BHP	RPM	BHP	RPM	BHP	RPM	BHP	RPM	BHP	RPM	BHP	RPM	BHP	RPM	BHP
1000	4630	275	1.27	377	2.54														
1200	5556	282	1.55	383	3.04	461	4.59	527	6.20										
1400	6482	291	1.90			467	5.32	533	7.14	591	9.01								
1600	7408	301	2.30	396	4.13	473	6.08	539	8.12	597	10.19	649	12.28	697	14.42				
1800	8334	312	2.74	403	4.73	479	6.88	544	9.08	602	11.36	655	13.71	703	16.06	748	18.46	790	20.89
2000	9260	326	3.29	412	5.43	486	7.74	550	10.13	608	12.62	661	15.19	709	17.74	754	20.36	796	22.98
2200	10186	340	3.90	422	6.22	494	8.70	558	11.32	614	13.93	667	16.71	715	19.48	760	22.30	802	25.14
2400	11112	356	4.63	432	7.05	503	9.75	565	12.50	621	15.34	673	18.29	721	21.26	766	24.30	808	27.34
2600	12038	372	5.44	446	8.08	512	10.85	572	13.73	628	16.79	679	19.89	727	23.10	772	26.35	814	29.61
2800	12964	388	6.33	459	9.14	522	12.07	582	15.21	636	18.38	687	21.71	734	25.07	778	28.46	820	31.93
3000	13890	405	7.36	473	10.34	534	13.46	591	16.68	644	20.02	694	23.50	741	27.09	784	30.60	826	34.31
3200	14816	423	8.54	488	11.66	547	14.95	601	18.30	654	21.90	702	25.46	748	29.17	792	33.02	833	36.85
3400	15742	441	9.84	503	13.07	560	16.53	612	20.06	663	23.76	711	27.56	756	31.43	799	35.40	840	39.45
3600	16668	459	11.27	519	14.66	574	18.30	625	22.01	673	25.80	721	29.87	765	33.87	807	37.97	847	42.12
3800	17594	477	12.81	536	16.45	588	20.15	638	24.06	684	28.00	730	32.14	774	36.39	815	40.16	855	45.01
4000	18520	496	14.57	552	18.28	604	22.29	652	26.33	697	30.43	740	34.62	784	39.13	825	43.61	863	47.96
4200	19446	515	16.48	569	20.33	619	24.43	665	28.60	710	32.96	752	37.39	794	41.98	834	46.55	873	51.32
4400	20372	533	18.44	587	22.64	636	26.95	680	31.21	724	35.77	765	40.31	803	44.77	844	49.76	882	54.60
4600	21298	553	20.73	604	24.99	652	29.49	696	34.05	737	38.55	778	43.37	816	48.11	854	53.07	892	58.18
4800	22224	573	23.20	622	27.61	668	32.18	711	36.88	751	41.62	792	46.72	829	51.56	865	56.59	902	61.87
5000	23150	594	25.98	641	30.54	685	35.16	727	40.02	766	44.89	805	50.05	843	55.34	878	60.45	912	65.68
5200	24076	614	28.83	659	33.52	702	38.31	743	43.32	782	48.49	819	53.70	856	59.08	891	64.45	924	69.75
5400	25002	634	31.87	677	36.67	719	41.63	760	46.97	798	52.27	834	57.62	870	63.17	904	68.59	937	74.15
5600	25928	655	35.28	696	40.18	737	45.32	776	50.61	814	56.22	849	61.65	883	67.20	918	73.13	951	78.97
5800	26854	675	38.75	715	43.89	755	49.20	793	54.63	830	60.34	865	66.08	898	71.77	931	77.59	964	83.70
6000	27780	696	42.62	733	47.63	773	53.28	810	58.84	846	64.65	881	70.70	913	76.43	945	82.46	978	88.86
6200	28706	716	46.53	752	51.77	791	57.58	828	63.48	863	69.39	897	75.51	929	81.54	960	87.68	991	93.93
6400	29632	737	50.89	772	56.27	810	62.32	845	68.10	879	74.09	913	80.52	945	86.85	975	93.01	1005	99.45
6600	30558	758	55.50	792	61.03	828	67.05	863	73.18	896	79.24	929	85.73	961	92.37	991	98.82	1020	105.5

SP*:>>		10		11		12		13		14		15		16		17		18	
OV*	CFM*	RPM	BHP	RPM	BHP	RPM	BHP	RPM	BHP	RPM	BHP	RPM	BHP	RPM	BHP	RPM	BHP	RPM	BHP
2000	9260	836	25.67	874	28.38														
2200	10186	842	28.03	880	30.95	916	33.86	951	36.86	990	43.04	1022	46.24	1054	49.61				
2400	11112	848	30.44	886	33.57	922	36.69	957	39.90	996	46.35	1028	49.75	1060	53.33	1090	56.78	1119	60.23
2600	12038	854	32.92	891	36.14	928	39.59	962	42.87	996	46.35	1028	49.75	1060	53.33	1090	56.78	1119	60.23
2800	12964	859	35.34	897	38.88	934	42.55	968	46.03	1002	49.73	1034	53.33	1065	56.96	1095	60.70	1125	64.43
3000	13890	865	37.93	903	41.69	940	45.57	974	49.26	1008	53.17	1040	56.98	1071	60.82	1101	64.76	1131	68.71
3200	14816	871	40.58	909	44.56	945	48.51	980	52.56	1014	56.69	1046	60.71	1077	64.75	1107	68.90	1137	73.06
3400	15742	879	43.54	916	47.64	951	51.66	986	55.93	1020	60.28	1052	64.51	1083	68.77	1113	73.14	1143	77.50
3600	16668	886	46.44	923	50.76	958	55.03	992	59.37	1026	63.94	1058	68.38	1089	72.85	1119	77.32	1148	81.80
3800	17594	893	49.40	930	53.95	965	58.44	999	63.02	1032	67.67	1064	72.33	1095	77.02	1125	81.70	1154	86.39
4000	18520	901	52.62	938	57.40	973	62.13	1006	66.74	1039	71.62	1070	76.33	1101	81.25	1130	86.15	1160	91.06
4200	19446	909	55.90	945	60.76	980	65.71	1014	70.76	1046	75.65	1077	80.58	1108	85.76	1137	90.78	1166	95.81
4400	20372	919	59.62	953	64.37	987	69.37	1021	74.65	1053	79.77	1085	85.16	1115	90.33	1144	95.16	1173	100.0
4600	21298	928	63.25	963	68.45	996	73.52	1029	78.86	1061	84.21	1092	89.60	1122	94.99	1151	100.2	1180	105.5
4800	22224	938	67.20	972	72.43	1005	77.75	1037	83.13	1068	88.51	1100	94.38	1130	100.0	1159	105.6	1188	111.1
5000	23150	948	71.27	982	76.76	1015	82.33	1047	87.96	1077	93.36	1107	99.00	1137	104.4	1166	110.5	1195	116.6
5200	24076	957	75.22	992	81.21	1025	87.04	1056	92.66	1087	98.57	1116	104.4	1145	110.0	1173	116.1	1202	122.2
5400	25002	969	79.82	1001	85.53	1034	91.61	1066	97.76	1096	103.3	1126	109.9	1154	115.5	1182	122.2	1210	128.8
5600	25928	982	84.65	1012	90.39	1044	96.58	1075	102.2	1106	109.9	1135	115.5	1164	121.1	1191	127.2	1218	133.3
5800	26854	995	89.64	1025	95.64	1054	101.1	1085	108.8	1116	114.4	1145	121.1	1173	127.7	1200	133.8	1227	140.0
6000	27780	1009	95.09	1038	101.1	1067	107.7	1095	113.3	1125	120.0	1155	127.7	1183	133.3	1210	140.0	1237	146.6
6200	28706	1022	100.0	1052	106.6	1080	113.3	1108	119.9	1135	126.6	1164	133.3	1193	140.0	1220	146.6	1247	153.3
6400	29632	1036	106.6	1065	112.2	1093	119.9	1121	126.6	1147	132.2	1174	139.9	1202	146.6	1229	153.3	1256	160.0
6600	30558	1049	111.1	1079	119.9	1107	125.5	1113	132.2	1160	139.9	1186	146.6	1212	153.3	1239	160.5	1266	167.7

\*SP - Static Pressure Inches H<sub>2</sub>O   \*OV - Outlet Velocity (Feet Per Minute)   \*CFM - Cubic Feet Per Minute

Inlet Size - 33" Dia. Outside  
Outlet Size - 27¾" x 31⅞" Outside  
Wheel Diameter - 57"  
Tip Speed = 14.92 x RPM

Inlet Area - 5.94 Sq. Ft. Outside  
Outlet Area - 5.94 Sq. Ft. Inside  
Wheel Circumference - 14.92 Ft.  
Max Safe Fan Speed - 1005 RPM

Power Rating (BHP) does not include transmission losses. Performance Ratings do not include the effects of appurtenances (accessories). All capacities based on standard air (density .075 #/cu. ft. 70°F. 29.92" Hg. Bar.). Performances shown in the color zone are those operating at maximum static efficiency. Performances shown above colored line are those operating within optimum operation range. Performance certified is for installation type D - ducted inlet, ducted outlet.

SP*,>>		1		2		3		4		5		6		7		8		9	
OV*	CFM*	RPM	BHP	RPM	BHP	RPM	BHP	RPM	BHP	RPM	BHP	RPM	BHP	RPM	BHP	RPM	BHP	RPM	BHP
1000	5990	244	1.64	334	3.28														
1200	7188	251	2.03	340	3.94	409	5.93	467	7.99										
1400	8386	259	2.48	345	4.60	414	6.86	472	9.18	524	11.62								
1600	9584	267	2.97	352	5.37	419	7.83	478	10.49	529	13.13	576	15.90	618	18.61				
1800	10782	278	3.58	358	6.14	425	8.90	483	11.77	534	14.68	581	17.72	624	20.80	663	23.81	701	27.02
2000	11980	291	4.32	367	7.11	432	10.07	488	13.11	540	16.38	586	19.60	629	22.95	669	26.33	706	29.69
2200	13178	304	5.14	375	8.08	439	11.30	495	14.64	545	18.04	592	21.65	634	25.15	674	28.81	711	32.44
2400	14376	318	6.08	385	9.22	447	12.66	502	16.24	552	19.95	597	23.65	640	27.55	679	31.35	717	35.39
2600	15574	332	7.12	397	10.53	456	14.18	509	17.91	558	21.81	603	25.80	645	29.88	685	34.10	722	38.27
2800	16772	347	8.33	409	11.94	464	15.69	517	19.73	565	23.86	603	28.15	651	32.40	690	36.78	727	41.22
3000	17970	362	9.67	422	13.55	475	17.49	526	21.76	573	26.10	616	30.44	658	35.13	696	39.65	733	44.42
3200	19168	378	11.22	436	15.33	487	19.48	535	23.89	581	28.42	624	33.10	665	37.96	703	42.77	739	47.65
3400	20366	395	13.01	450	17.24	499	21.59	545	26.16	590	30.98	632	35.83	671	40.70	710	46.00	746	51.18
3600	21564	411	14.87	464	19.29	512	23.97	557	28.76	599	33.67	641	38.85	680	44.04	716	49.12	753	54.80
3800	22762	428	17.02	479	21.62	525	26.44	569	31.50	609	36.50	650	41.98	688	47.30	725	52.91	759	58.31
4000	23960	444	19.22	494	24.12	539	29.18	581	34.39	621	39.73	659	45.25	697	50.89	733	56.61	767	62.33
4200	25158	461	21.73	509	26.79	553	32.09	593	37.42	633	43.12	670	48.83	706	54.62	742	60.67	776	66.72
4400	26356	479	24.58	525	29.81	568	35.36	607	40.91	645	46.68	682	52.74	715	58.41	751	64.87	785	72.25
4600	27554	497	27.63	541	33.03	583	38.83	621	44.56	658	50.49	694	56.83	727	62.83	760	69.22	793	75.65
4800	28752	515	30.92	557	36.47	597	42.29	635	48.41	670	54.63	706	61.09	739	67.44	770	73.72	802	80.48
5000	29950	533	34.45	574	40.34	612	46.16	650	52.69	684	58.91	718	65.54	751	72.23	782	78.86	812	85.65
5200	31147	551	38.23	590	44.23	628	50.48	664	56.95	699	63.82	730	70.16	763	77.22	794	84.20	824	91.34
5400	32346	569	42.28	607	48.59	644	55.06	679	61.68	713	68.68	744	75.39	775	82.41	806	89.75	835	96.89
5600	33544	588	46.83	624	53.22	660	59.88	694	66.66	727	73.77	758	80.86	788	88.13	818	95.50	847	102.2
5800	34742	606	51.44	641	58.13	676	64.96	709	71.87	742	79.41	773	86.89	802	94.23	831	101.1	860	109.9
6000	35940	625	56.61	657	63.03	693	70.62	725	77.66	757	85.30	787	92.85	816	100.0	843	108.8	872	116.6
6200	37138	643	61.82	675	68.75	709	76.25	741	83.73	771	91.11	802	99.41	830	107.7	857	114.4	884	123.3
6400	38336	662	67.65	693	74.73	726	82.51	757	90.09	786	97.52	816	105.5	844	113.3	871	122.2	897	130.0
6600	39534	681	73.82	711	81.05	742	88.72	773	96.75	802	104.4	831	113.3	859	121.1	885	129.9	911	138.8



Inlet Size - 37" Dia. Outside  
Outlet Size - 31¼" x 35<sup>13</sup>/<sub>16</sub>" Outside  
Wheel Diameter - 64<sup>3</sup>/<sub>8</sub>"  
Tip Speed = 16.85 x RPM

Inlet Area - 7.47 Sq. Ft. Outside  
Outlet Area - 7.54 Sq. Ft. Inside  
Wheel Circumference - 16.85 Ft.  
Max Safe Fan Speed - 890 RPM

Power Rating (BHP) does not include transmission losses. Performance Ratings do not include the effects of appurtenances (accessories). All capacities based on standard air (density .075 #/cu. ft. 70°F. 29.92" Hg. Bar.). Performances shown in the color zone are those operating at maximum static efficiency. Performances shown above colored line are those operating within optimum operation range. Performance certified is for installation type D - ducted inlet, ducted outlet.

SP*.>>		1		2		3		4		5		6		7		8		9	
OV*	CFM*	RPM	BHP	RPM	BHP	RPM	BHP	RPM	BHP	RPM	BHP	RPM	BHP	RPM	BHP	RPM	BHP	RPM	BHP
1000	7590	216	2.08	296	4.17														
1200	9108	222	2.57	301	4.99	362	7.52	414	10.18										
1400	10626	229	3.14	305	5.81	366	8.67	418	11.66	464	14.76								
1600	12144	236	3.75	311	6.77	371	9.94	423	13.29	468	16.63	509	20.06	547	23.61				
1800	13662	246	4.54	317	7.80	376	11.27	427	14.88	473	18.66	514	22.44	552	26.33	620	34.19		
2000	15180	257	5.45	324	8.94	382	12.73	432	16.63	478	20.78	519	24.91	557	29.14	592	33.37	625	37.68
2200	16698	268	6.45	332	10.25	388	14.27	438	18.55	482	22.82	523	27.30	561	31.87	596	36.43	630	41.27
2400	18216	280	7.61	340	11.62	395	15.98	444	20.55	488	25.21	528	29.91	566	34.85	601	39.76	634	44.74
2600	19734	293	8.97	351	13.32	403	17.91	450	22.63	494	27.68	534	32.77	571	37.91	606	43.18	639	48.52
2800	21252	306	10.48	361	15.03	410	19.80	457	24.93	500	30.24	539	35.52	576	41.04	611	46.70	644	52.40
3000	22770	320	12.25	372	17.00	420	22.14	465	27.50	506	32.88	545	38.55	582	44.46	616	50.27	648	56.12
3200	24288	334	14.19	384	19.19	430	24.55	473	30.20	514	35.99	551	41.69	588	47.99	622	54.18	654	60.41
3400	25806	348	16.32	397	21.70	441	27.29	482	33.14	522	39.26	559	45.36	594	51.64	628	58.21	660	64.81
3600	27324	362	18.64	410	24.40	452	30.21	492	36.30	529	42.42	567	49.18	601	55.61	634	62.37	666	69.35
3800	28842	377	21.34	422	27.10	463	33.24	502	39.62	538	46.08	574	52.89	609	60.01	641	66.90	672	74.01
4000	30360	392	24.26	435	30.20	476	36.84	513	43.35	549	50.27	582	57.02	616	64.27	648	71.55	678	78.75
4200	31878	406	27.24	449	33.72	488	40.43	524	47.29	559	54.39	592	61.68	624	68.99	656	76.70	686	84.31
4400	33396	421	30.63	463	37.50	501	44.48	536	51.62	570	59.00	602	66.42	632	73.86	664	82.03	694	90.07
4600	34914	437	34.48	477	41.53	514	48.78	548	56.13	581	63.84	613	71.72	642	79.23	671	87.15	701	95.60
4800	36432	453	38.63	491	45.82	527	53.34	561	61.18	592	68.88	623	76.88	653	85.20	681	93.39	709	101.1
5000	37950	469	43.09	506	50.69	540	58.14	573	66.17	604	74.34	634	82.64	663	91.02	691	99.64	717	107.7
5200	39468	485	47.87	520	55.55	554	63.55	586	71.76	616	80.05	645	88.65	674	97.49	701	106.6	727	114.4
5400	40986	501	52.99	535	61.04	568	69.27	599	77.64	629	86.44	657	95.15	685	104.4	712	113.3	738	122.2
5600	42504	517	58.45	549	66.50	582	75.31	612	83.81	642	93.13	669	101.1	696	111.1	723	120.0	748	129.9
5800	44022	534	64.64	564	72.65	596	81.66	625	90.28	654	99.68	682	109.9	707	118.8	733	128.8	759	138.8
6000	45440	550	70.85	579	79.16	610	88.34	639	97.50	667	106.6	694	116.6	720	126.6	744	136.6	770	146.6
6200	47058	566	77.44	594	86.00	625	95.82	653	105.5	680	114.4	707	124.4	732	134.4	756	144.4	781	155.5
6400	48576	583	84.85	610	93.57	639	103.3	667	113.3	693	122.2	720	133.3	745	143.3	769	154.4	791	163.3
6600	50094	599	92.26	626	101.1	654	111.1	681	121.1	707	131.1	733	142.2	758	153.3	781	163.3	804	174.4

SP*.>>		10		11		12		13		14		15		16		17		18	
OV*	CFM*	RPM	BHP	RPM	BHP	RPM	BHP	RPM	BHP	RPM	BHP	RPM	BHP	RPM	BHP	RPM	BHP	RPM	BHP
2000	15180	656	42.00	686	46.48														
2200	16698	661	45.92	691	50.74	719	55.46	746	60.25	773	65.35								
2400	18216	665	49.73	695	54.88	724	60.17	751	65.30	777	70.48	803	75.95	827	81.15				
2600	19734	670	53.85	700	59.36	728	64.73	756	70.47	782	75.98	807	81.51	832	87.33	855	92.93	878	98.53
2800	21252	675	58.08	705	63.94	733	69.66	760	75.46	786	81.30	812	87.47	836	93.31	860	99.40	883	105.5
3000	22770	680	62.42	709	68.35	738	74.71	765	80.85	791	87.04	816	93.23	841	99.75	864	105.98	888	112.2
3200	24288	684	66.57	714	73.15	742	79.55	770	86.36	796	92.90	821	99.43	846	106.6	869	113.25	892	119.9
3400	25806	690	71.34	719	78.03	747	84.81	774	91.65	801	98.89	826	105.5	850	112.2	874	119.40	897	126.6
3600	27324	696	76.25	725	83.32	752	90.15	779	97.39	805	104.4	831	112.2	855	119.9	879	127.15	902	134.4
3800	28842	702	81.29	731	88.74	758	95.94	785	103.3	810	110.0	835	118.8	860	126.6	883	133.85	906	141.1
4000	30360	708	86.47	736	93.93	764	101.1	790	109.9	816	117.7	841	125.5	864	133.3	887	141.60	911	149.9
4200	31878	715	92.12	742	99.62	770	107.7	796	115.5	822	124.4	846	132.2	870	140.0	893	148.85	916	157.7
4400	33396	722	97.89	749	105.5	776	114.4	802	122.2	828	131.1	852	139.9	876	148.8	898	157.15	921	165.5
4600	34914	730	104.4	757	112.2	783	120.0	808	129.9	833	138.8	858	147.7	882	156.6	904	165.50	927	174.4
4800	36432	737	110.0	764	119.9	790	127.7	815	136.6	839	145.5	864	154.4	888	164.4	910	173.30	933	182.2
5000	37950	745	117.7	772	126.6	798	135.5	823	144.4	847	153.3	870	162.2	893	172.2	916	181.65	939	191.1
5200	39468	753	124.4	780	133.3	805	142.2	830	152.2	854	161.1	877	171.1	900	181.1	922	191.10	945	201.1
5400	40986	763	131.1	787	140.0	813	150.0	838	160.0	862	170.0	885	180.0	907	190.0	928	199.95	950	209.9
5600	42504	773	139.9	797	149.9	821	159.9	846	169.9	869	179.9	892	189.9	915	200.0	936	209.95	957	219.9
5800	44022	783	147.7	807	157.7	829	167.7	853	177.7	877	188.8	900	199.9	922	209.9	943	219.95	965	230.0
6000	45440	794	156.6	817	166.6	840	177.7	861	186.6	885	198.8	908	209.9	930	220.0	951	230.55	972	241.1
6200	47058	805	165.5	828	176.6	850	186.6	872	197.7	893	207.7	915	218.8	938	230.0	959	241.10	980	252.2
6400	48576	815	174.4	838	185.5	861	197.7	882	207.7	903	218.8	923	229.9	945	240.0	966	252.20	988	264.4
6600	50094	826	184.4	849	196.6	882	207.7	893	218.8	913	229.9	933	240.0	953	252.2	974	264.40	995	276.6

\*SP - Static Pressure Inches H<sub>2</sub>O   \*OV - Outlet Velocity (Feet Per Minute)   \*CFM - Cubic Feet Per Minute

Inlet Size - 41" Dia. Outside  
Outlet Size - 34½" x 39<sup>5</sup>/<sub>16</sub>" Outside  
Wheel Diameter - 71"  
Tip Speed = 18.59 x RPM

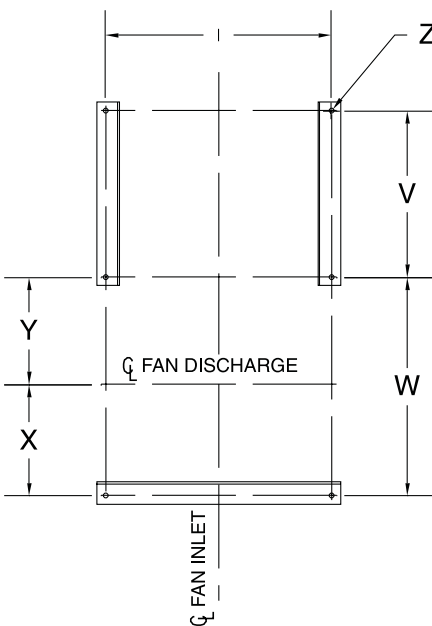
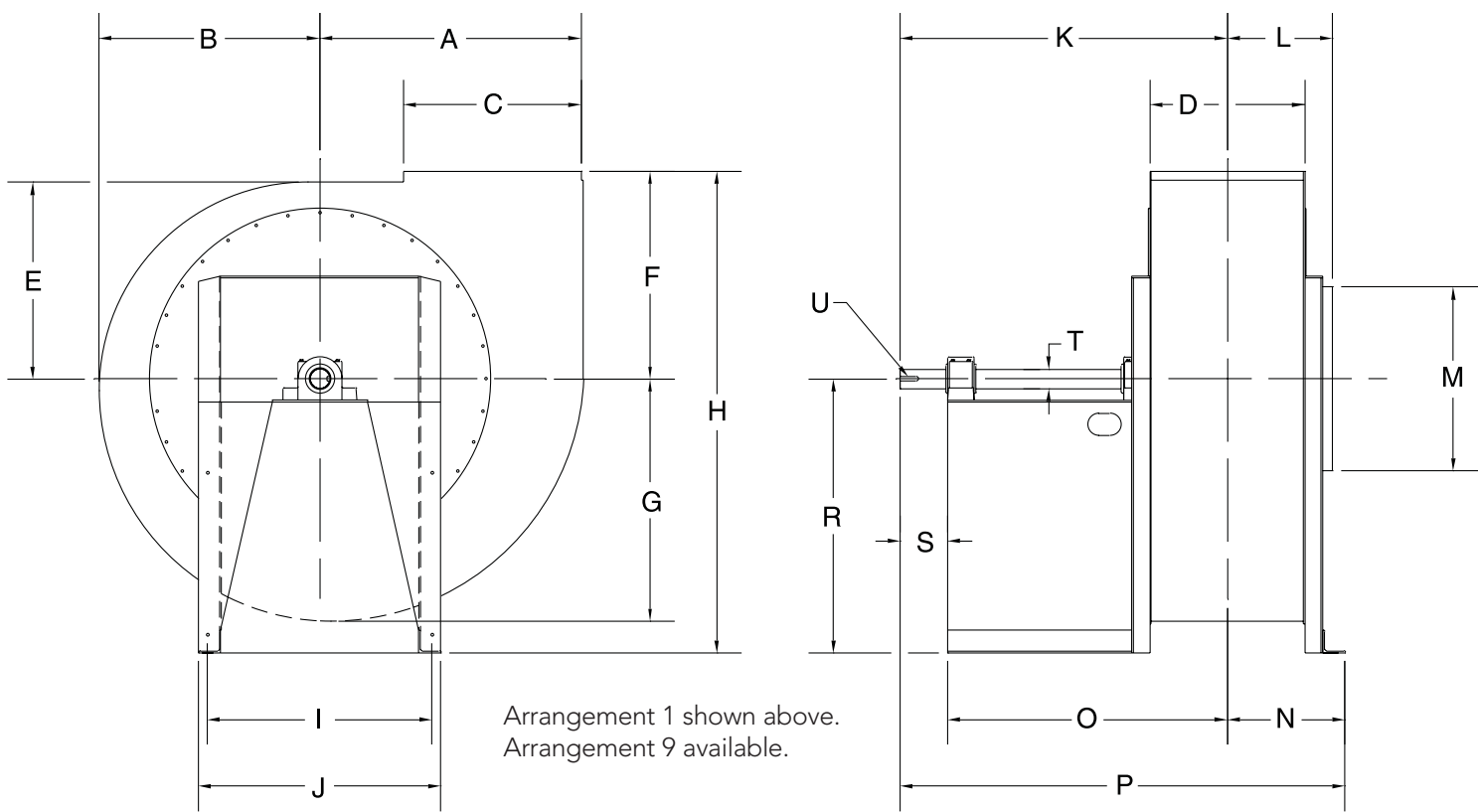
Inlet Area - 9.17 Sq. Ft. Outside  
Outlet Area - 9.15 Sq. Ft. Inside  
Wheel Circumference - 18.59 Ft.  
Max Safe Fan Speed - 804 RPM

Power Rating (BHP) does not include transmission losses. Performance Ratings do not include the effects of appurtenances (accessories). All capacities based on standard air (density .075 #/cu. ft. 70°F. 29.92" Hg. Bar.). Performances shown in the color zone are those operating at maximum static efficiency. Performances shown above colored line are those operating within optimum operation range. Performance certified is for installation type D - ducted inlet, ducted outlet.

SP*.>>		1		2		3		4		5		6		7		8		9	
OV*	CFM*	RPM	BHP	RPM	BHP	RPM	BHP	RPM	BHP	RPM	BHP	RPM	BHP	RPM	BHP	RPM	BHP	RPM	BHP
1000	9152	196	2.51																
1200	10982	201	3.06																
1400	12813	207	3.76																
1600	14643	214	4.55																
1800	16474	222	5.42																
2000	18304	232	6.50																
2200	20134	242	7.71																
2400	21965	253	9.15																
2600	23795	265	10.75																
2800	25626	276	12.51																
3000	27456	288	14.55																
3200	29286	301	16.88																
3400	31117	314	19.45																
3600	32947	326	22.28																
3800	34778	339	25.32																
4000	36608	353	28.80																
4200	38438	366	32.58																
4400	40269	379	36.45																
4600	42099	393	40.98																
4800	43929	408	45.86																
5000	45760	422	51.35																
5200	47590	437	56.99																
5400	49421	451	63.00																
5600	51251	466	69.74																
5800	53081	480	76.60																
6000	54912	495	84.25																
6200	56742	509	91.97																
6400	58573	524	100.5																
6600	60403	539	109.7																



MATERIAL HANDLING FAN



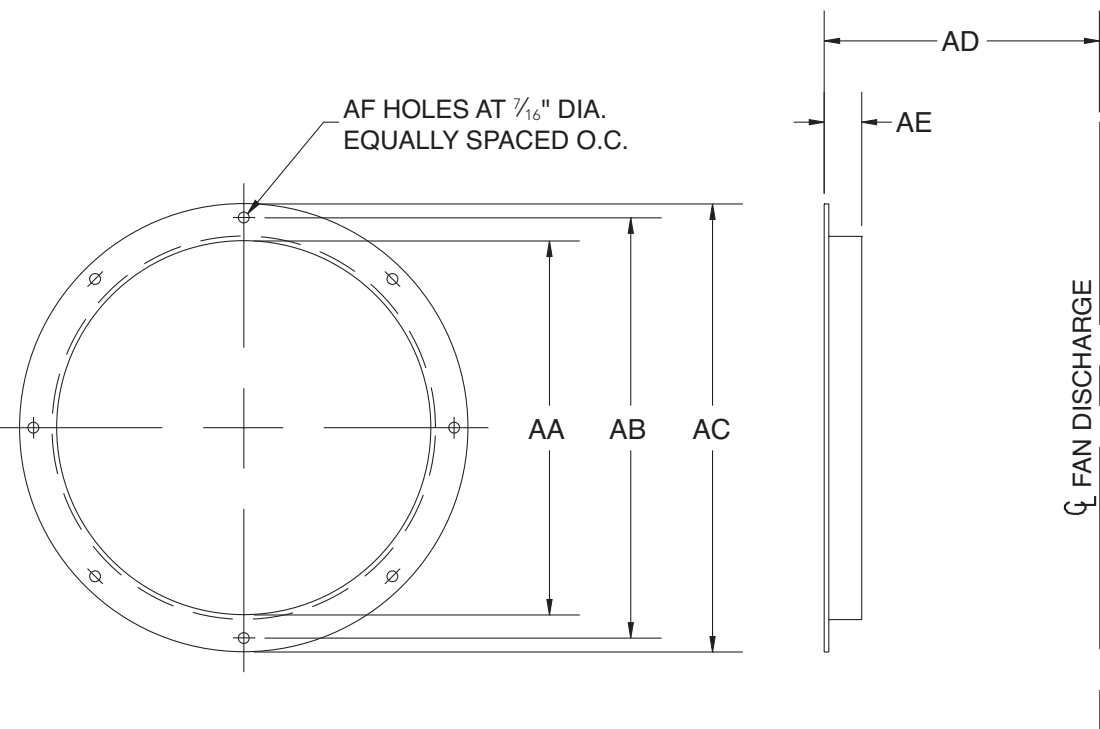
Note: All dimensions in inches.  
All fans shipped with Outlet Flanges unless otherwise specified.

Only certified dimensions to be used for construction.  
Certified Drawings available upon request.

Material Handling Fan																											
Size No.	A	B	C	D	E	F	G	H	I	J	K	L	M	N	O	P	R	S	T	U	V	W	X	Y	Z	Weight	Size No.
11	15 11/16	13 7/16	10 7/8	9 7/16	12 1/8	14 5/8	14 1/2	33 3/8	15 1/2	17	31 1/4	7 1/2	11	9 1/32	26 5/32	40 9/32	18 3/4	5 3/32	1 11/16	3/8 X 3/16	16 7/8	16 9/16	8 9/32	8 9/32	11/16	410	11
13	18 7/16	15 7/8	12 13/16	11	13 3/4	16 1/4	17 5/16	37 1/4	17	19	32 11/16	8 5/16	13	9 13/16	27 11/16	42 1/2	21	5	1 11/16	3/8 X 3/16	16 3/8	18 7/8	9 1/16	9 13/16	11/16	509	13
15	21 5/16	18 1/8	14 3/4	12 3/4	15 7/8	18 3/8	19 15/16	42 11/16	19 1/2	21	35 7/8	9 3/16	15	10 11/16	29 11/16	46 9/16	24 5/16	6 3/16	1 15/16	1/2 X 1/4	18 3/4	19 7/8	9 15/16	9 15/16	11/16	629	15
17	24 1/4	20 1/2	16 9/16	14 7/16	17 15/16	20 7/16	22 9/16	48	21 1/2	23	35 7/8	10	17	11 17/32	30 21/32	47 13/32	27 9/16	5 7/32	1 15/16	1/2 X 1/4	18 1/4	21 7/8	10 25/32	11 3/32	11/16	729	17
19	27	22 7/8	18 3/8	16	20	22 1/2	25 1/8	52 5/8	23 1/2	25	37 3/4	10 13/16	19	12 5/16	32	50 1/16	30 1/8	5 3/4	2 3/16	1/2 X 1/4	19 7/16	23 1/8	11 5/8	11 5/8	11/16	929	19
21	30	25	20 1/4	17 11/16	22 5/8	25 5/8	27 5/8	59 1/4	28	31	40 1/2	13 3/8	21	15 5/32	34 13/32	55 21/32	33 5/8	6 3/32	2 7/16	5/8 X 5/16	18	28 1/16	13 21/32	14 13/32	11/16	1180	21
23	32 3/4	26 5/8	22 1/4	19 1/2	23 3/8	26 7/8	30	62 7/8	30	33	44 7/8	14 5/16	23	16	38 13/16	60 13/16	36	6	2 7/16	5/8 X 5/16	21 9/16	29 3/4	14 1/2	15 1/4	11/16	1360	23
26	37	31	25 3/16	21 15/16	27 3/8	29 7/8	35 1/8	70	31	34	46 3/32	15 1/2	26	17 9/32	40 3/32	63 3/8	40 1/8	6	2 15/16	3/4 X 3/8	20 1/16	33 1/16	15 25/32	17 9/32	11/16	1659	26
29	41 3/8	34 5/8	28	24 1/2	30 1/2	33	39	81	36	39	52 1/2	16 13/16	29	18 9/16	45	71 1/16	48	7 1/2	2 15/16	3/4 X 3/8	25 3/16	34 7/8	17 1/16	17 13/16	13/16	2109	29
33	48	39	31 7/8	27 3/4	34 1/2	38	43 1/2	89	40	43	56	18 7/16	33	20 3/16	49 7/16	76 3/16	51	6 9/16	3 7/16	7/8 X 7/16	28	38 1/8	18 11/16	19 7/16	13/16	2779	33
37	53 1/8	44	35 13/16	31 1/4	39	41 1/2	48 3/8	96 7/8	45	49	63 7/8	21 3/16	37	23 15/16	54 3/4	87 13/16	55 3/8	9 1/8	3 7/16	7/8 X 7/16	30 9/16	44 1/8	21 15/16	22 3/16	13/16	3269	37
41	58 3/4	49 1/8	39 9/16	34 1/2	43 3/4	46 1/4	54	107 1/4	50	54	72 7/8	23 1/2	41	26 5/8	62 3/8	99 5/8	61	10 1/2	4 7/16	1 X 1/2	36 7/8	48 3/8	24 5/8	23 3/4	1 1/16	5890	41



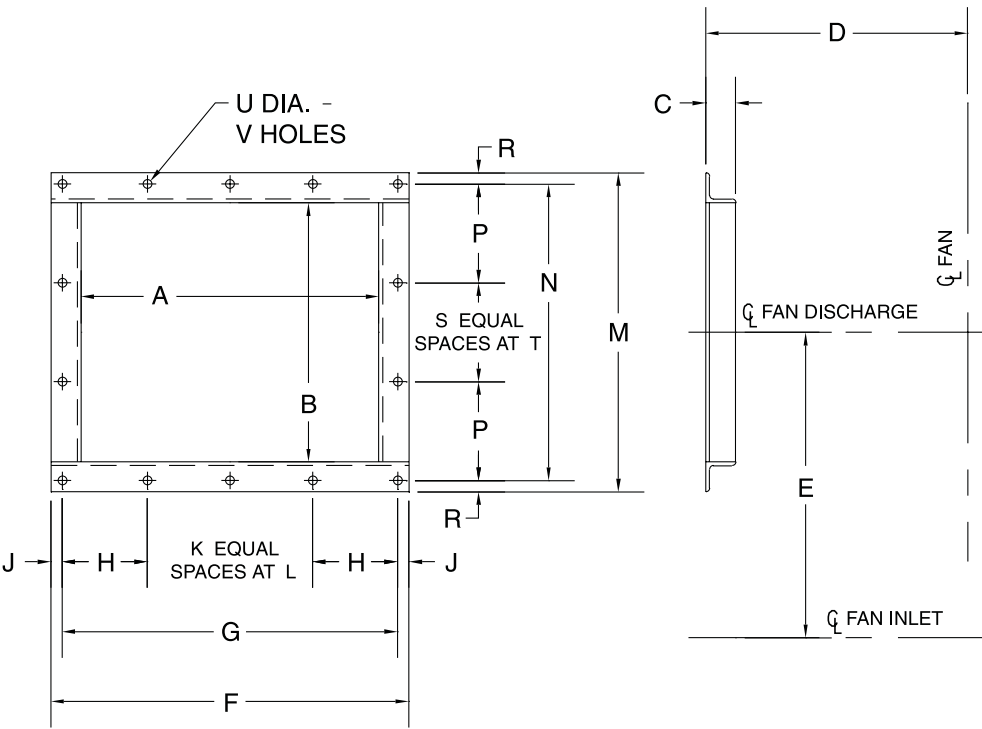
INLET FLANGE



Inlet Flange						
Fan Size	AA	AB	AC	AD	AE	AF
11	11 1/8	12 3/4	14 1/8	8	1 1/4	6
13	13 1/8	15	16 1/8	8 13/16	1 1/2	6
15	15 1/8	17	18 1/8	9 11/16	1 1/2	8
17	17 1/8	19	20 1/8	10 1/2	1 1/2	8
19	19 1/8	20 3/4	22 1/8	11 5/16	1 1/2	12
21	21 1/8	22 3/4	24 1/8	13 7/8	1 1/2	12
23	23 1/8	24 7/8	26 1/8	14 13/16	1 1/2	12
26	26 1/8	28 3/8	30 1/8	16	2	16
29	29 1/8	31 3/8	33 1/8	17 5/16	2	16
33	33 1/8	35 3/8	37 1/8	18 15/16	2	16
37	37 1/8	39 3/8	41 1/8	21 11/16	2	24
41	41 1/8	43 3/8	45 1/8	25 1/4	2	24

Note: All dimensions in inches.

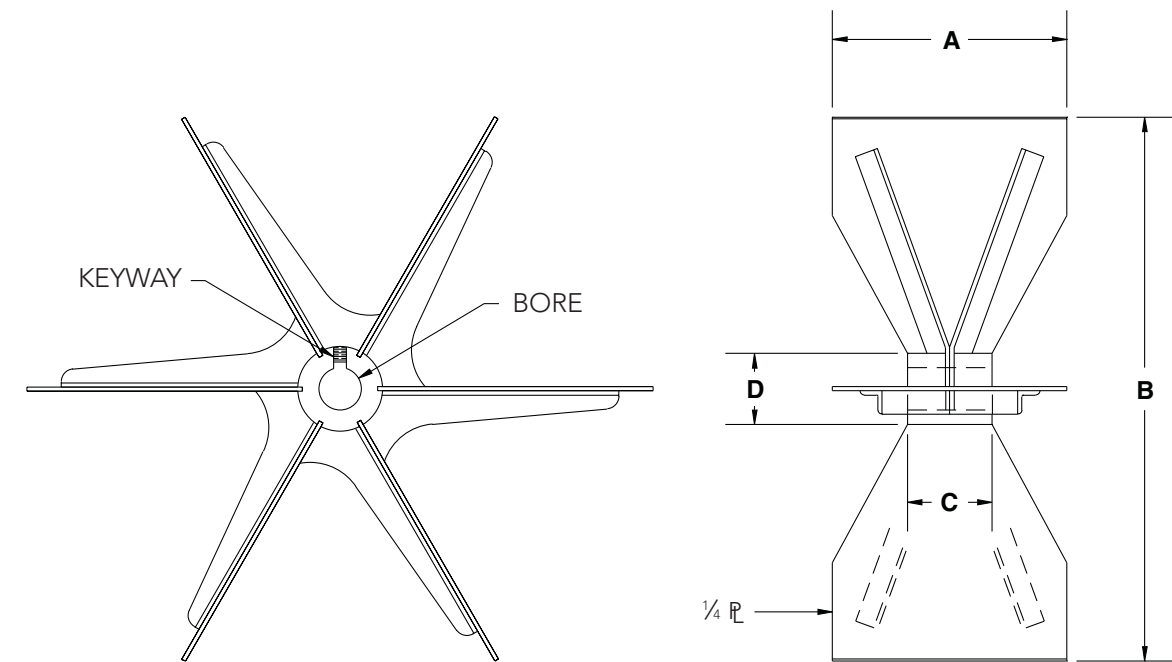
OUTLET FLANGE



Outlet Flange																					
Fan Size	A	B	C	D	E	F	G	H	J	K	L	M	N	P	R	S	T	U	V	Fan Size	
11	11 1/8	9 9/16	1 1/2	14 7/8	9 3/4	14 1/16	12 13/16	6 13/32	5/8	0	0	12 9/16	11 5/16	5 21/32	5/8	0	0	7/16	8	11	
13	12 15/16	11 1/8	1 1/2	16 1/2	11 1/2	15 15/16	14 7/16	4 13/16	3/4	1	4 13/16	14 1/8	12 5/8	6 5/16	3/4	0	0	7/16	10	13	
15	14 7/8	12 15/16	1 1/2	18 5/8	13 7/16	17 7/8	16 3/4	4 1/4	9/16	2	4 1/8	15 15/16	14 13/16	4 15/16	9/16	1	4 15/16	7/16	14	15	
17	16 3/4	14 5/8	1 1/2	20 9/16	15 7/16	19 3/4	18 1/2	4 5/8	5/8	2	4 5/8	17 5/8	16 3/8	4 3/16	5/8	2	4	7/16	16	17	
19	18 1/2	16 1/8	2	22 3/4	17 5/16	22 1/2	21 1/4	5 1/4	5/8	2	5 3/8	20 1/8	18 3/4	6 1/4	11/16	1	6 1/4	7/16	14	19	
21	20 5/16	17 3/4	2	25 7/8	19 3/8	24 5/16	22 5/16	5 5/32	1	2	6	21 3/4	19 3/4	6 5/8	1	1	6 1/2	7/16	14	21	
23	22 3/8	19 5/8	2	27 1/8	21 1/8	26 3/8	24 3/8	6 3/16	1	2	6	23 5/8	21 5/8	4 13/16	1	2	6	7/16	16	23	
26	25 3/8	22 1/8	2	30 1/8	23 7/8	29 3/8	27 5/8	5 3/16	7/8	3	5 3/4	26 1/8	24 3/8	6	7/8	2	6 3/16	7/16	18	26	
29	28 1/8	24 5/8	2	33 1/4	26 7/8	32 1/8	30 5/8	6 1/8	3/4	3	6 1/8	28 5/8	27 1/4	6 13/16	11/16	2	6 13/16	7/16	18	29	
33	32	27 7/8	2	38 1/4	31 9/16	36	34	6 1/2	1	3	7	31 7/8	30	6	15/16	3	6	7/16	20	33	
37	36	31 3/8	2	41 3/4	34 11/16	40	38	7	1	4	6	35 3/8	33 3/8	4 11/16	1	4	6	7/16	24	37	
41	39 3/4	34 5/8	2 1/2	46 1/2	38 15/32	44 3/4	42 1/4	6 1/8	1 1/4	5	6	39 5/8	37 1/4	6 1/4	1 3/16	4	6 3/16	9/16	26	41	



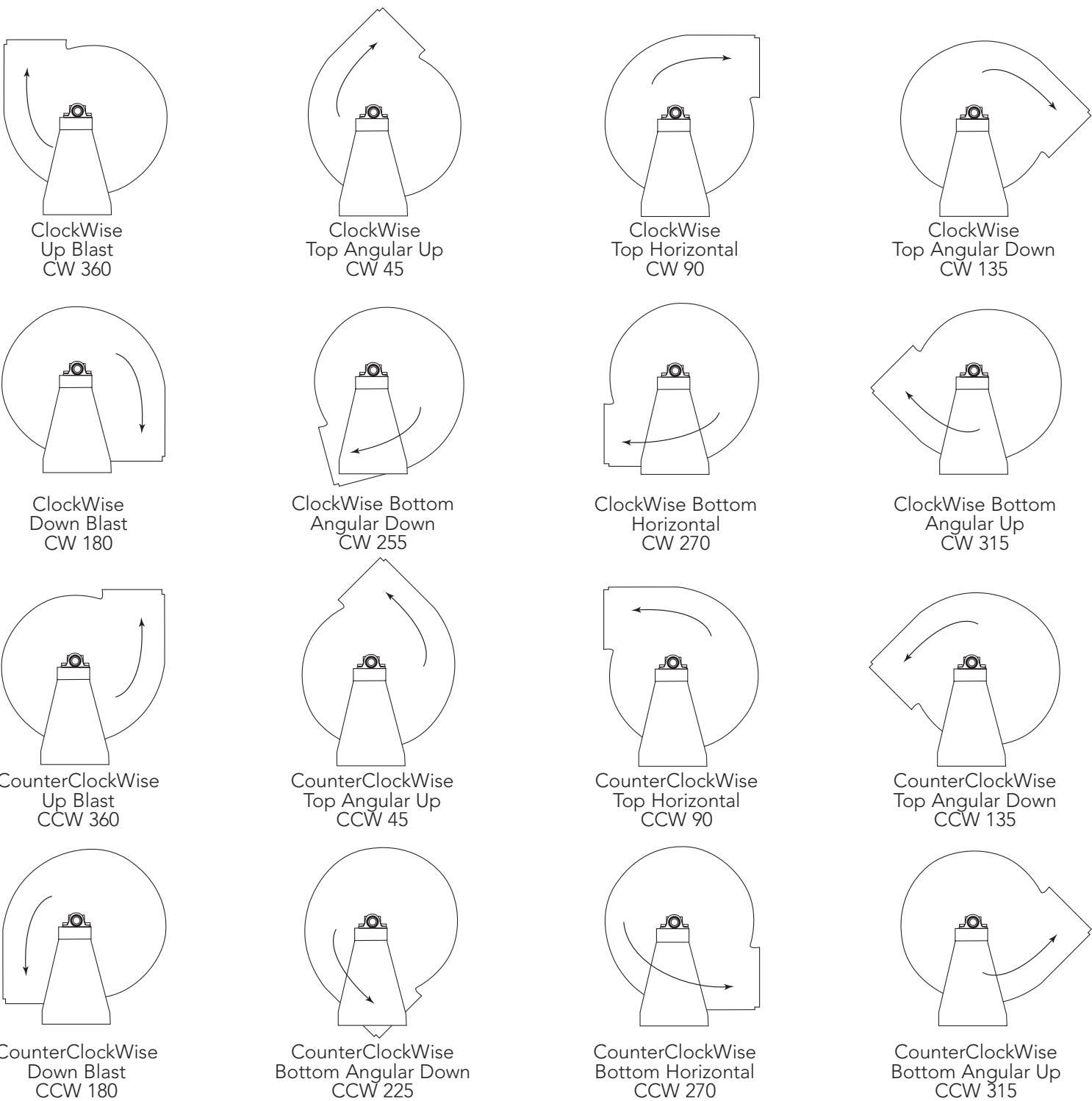
FAN WHEEL



Fan Wheel							
Size No.	A	B	Bore	Shaft Length	Keyway	C	D
11	8	19 1/8	1 11/16	33	3/8 X 3/16	3 1/2	4
13	9 1/2	22 5/8	1 11/16	34 7/16	3/8 X 3/16	3 1/2	4
15	10 15/16	26 1/8	1 15/16	37 7/8	1/2 X 1/4	4	4
17	12 7/16	29 5/8	1 15/16	37 7/8	1/2 X 1/4	4	4
19	13 13/16	33	2 3/16	40	1/2 X 1/4	4 1/2	5
21	15 5/16	36 1/2	2 7/16	43	5/8 X 5/16	5	5
23	16 3/4	40	2 7/16	47 3/8	5/8 X 5/16	5	5
26	19	45 1/8	2 15/16	48 13/16	3/4 X 3/8	6	5 1/2
29	21 3/16	50 1/2	2 15/16	55 5/8	3/4 X 3/8	6	5 1/2
33	24	57	3 7/16	60	7/8 X 7/16	8	7
37	27 1/2	64 3/8	3 7/16	68	7/8 X 7/16	8	7
41	29 1/2	71	4 7/16	78	1 X 1/2	10	8

Note: All dimensions in inches.

DESIGNATIONS FOR ROTATION AND DISCHARGE OF CENTRIFUGAL FANS



- NOTES:**
- 1. Direction of rotation is determined from drive side of fan.
  - 2. On single inlet fans, drive side is always considered as the side opposite fan inlet.
  - 3. Direction of discharge is determined in accordance with diagrams. Angle of discharge is referred to the vertical axis of fan and designated from such standard reference axis. Angle of discharge may be an intermediate angle as required.
  - 4. For fan inverted for ceiling suspension, or side wall mounting, direction of rotation and discharge is determined when fan is resting on floor.

Reprinted from AMCA  
Publication 99-86, with the  
express written permission from  
the Air Movement and Control  
Association International, Inc.  
30 West University Drive  
Arlington Heights, IL 60004-1893



CYCLONES



Koger Air A-B Cyclones Standard Construction

- Welded, bolted and flanged 12 gauge or heavier mild steel in inlet diameters 12" to 48".
- Design and construction minimizes abrasion as system particulate is collected and separated.
- Used as a pre-cleaner, the A-B cyclone separator reduces the load for the final filter
- Maximum efficiency is obtained when paired with final filter or in closed loop systems as atmospheric emissions are eliminated
- Bolted construction enables inlet position to be interchanged from clockwise to counterclockwise rotation
- Hot rolled plate construction is cleaned, primed and painted with selection of standard paint colors
- Flat top reinforced by gussets with lifting eyes

Options

- Length and degree of cone
- Pressure relief vents
- Steel supports, service platforms and ladders
- Air outlet cap
- Size and materials including Galvanized, Abrasion Resistant Steel, Stainless, Hot Rolled Plate
- Inlet transitions
- Multiple inlets with automatic backdraft dampers
- Round or rectangular inlets
- Cone hopper to match airlock or other equipment
- Cone access doors
- Bolt-in wear plates

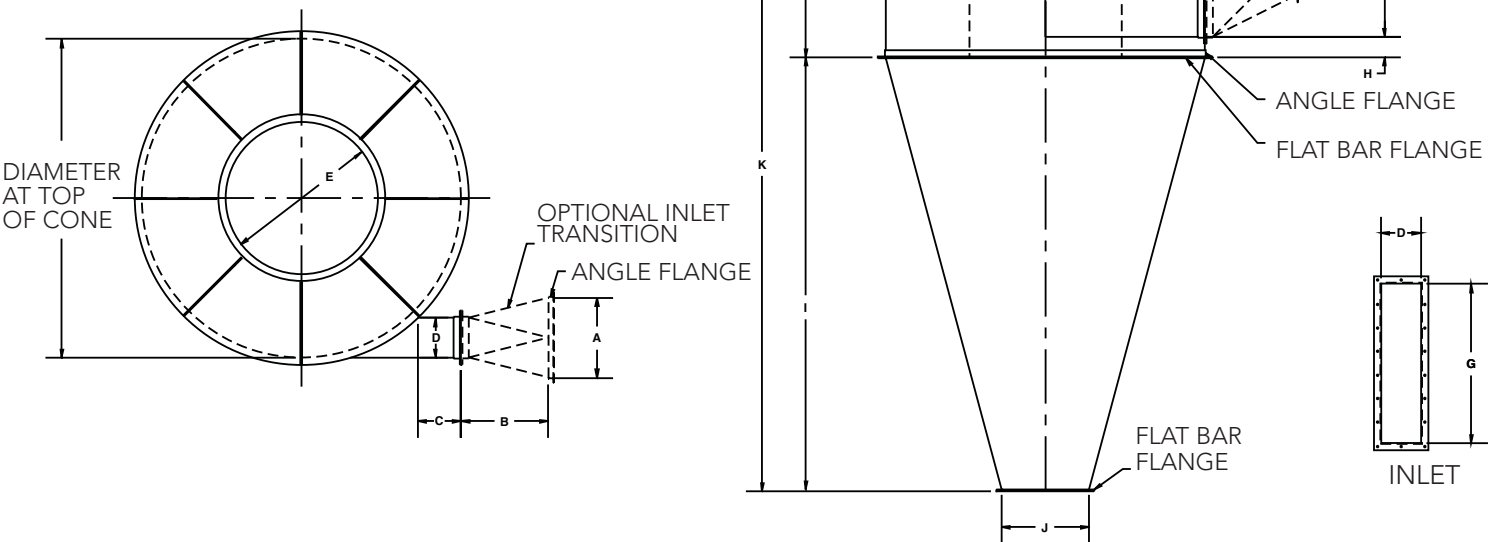
Shipment

- Body diameters 104" and smaller are shipped in one piece
- Body diameters above 104" are shipped knocked down with flanged bodies and cones
- Average shipment 2 to 4 weeks from order subject to work schedules and material availability

Standard A-B Cyclone

Top View - Clockwise Rotation Shown  
Counterclockwise Rotation also Available

Specify Rotation when Ordering



Certified drawings are available upon receipt of purchase order

Standard A-B Cyclone Separators													
A Inlet Dia.	Capacity CFM@2"SP	Body Diameter	B	C	D	E	F	G	H	I	J	K	L
12	3150	48	18	12	6	22	30	24	3	45	24	80	5
14	4275	56	18	12	7	26	35	28	3.5	60	24	100 1/4	5 1/4
16	5600	64	18	12	8	30	40	32	4	75	24	120 1/2	5 1/2
18	7000	72	24	12	9	34	45	36	4.5	90	24	140 3/4	5 3/4
20	9150	80	24	12	10	38	50	40	5	105	24	161	6
22	11175	88	24	12	11	42	55	44	5.5	120	24	181 1/4	6 1/4
24	13390	96	30	12	12	46	60	48	6	135	24	201 1/2	6 1/2
26	15810	104	30	12	13	50	65	52	6.5	150	24	221 3/4	6 3/4
28	18450	112	30	12	14	54	70	56	7	164	24	241	7
30	21290	120	30	12	15	58	75	60	7.5	179	24	261 1/4	7 1/4
32	24320	128	36	12	16	62	80	64	8	194	24	281 1/2	7 1/2
34	27550	136	36	12	17	66	85	68	8.5	209	24	301 3/4	7 3/4
36	31000	144	36	12	18	70	90	72	9	224	24	322	8
38	34650	152	36	12	19	74	95	76	9.5	239	24	342 1/4	8 1/4
40	38450	160	36	12	20	78	100	80	10	254	24	342 1/2	8 1/2
42	42540	168	42	12	21	82	105	84	10.5	269	24	382 3/4	8 3/4
44	46800	176	42	12	22	86	110	88	11	283	24	402	9
46	51250	184	42	12	23	90	115	92	11.5	298	24	422 1/4	9 1/4
48	55290	192	42	12	24	94	120	96	12	313	24	442 1/2	9 1/2

- All dimensions in inches
- Weight is calculated based on size, type and thickness of material
- CFM (cubic feet per minute) @ 2" water gauge static pressure

Applications

- Wood
- Brick
- Grain and Feed
- Agricultural
- Leather
- Rubber
- Textiles
- Pharmaceuticals
- Polymer and Plastics
- Sugar
- Foam
- Chemicals
- Minerals
- Asphalt
- Pulp and Paper
- Fly Ash
- Metal Grindings



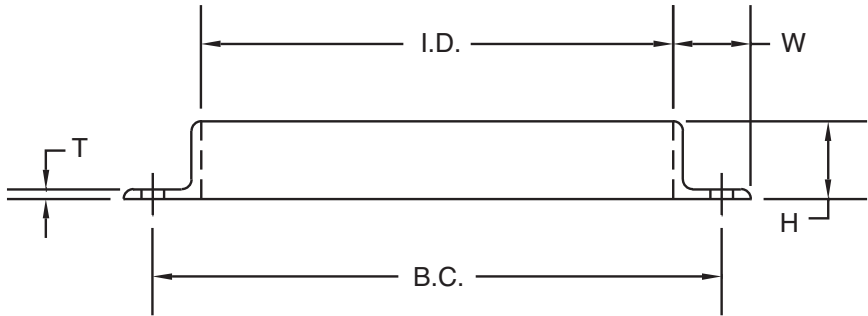
COMPONENT PARTS



Koger offers a complete line of blowpipe component parts for sheet metal shops, contractors and resellers to use as new and existing system replacements, additions or retrofits. After our skilled craftsmen manufacture our products, using state-of-the-art machinery, standard parts are warehoused in our service center for immediate shipment upon receipt of order.

Standard Pressed Angle Rings								
Inside Diameter	H	W	T	Bolt Hole Centers	No. of Bolt Holes	Size of Bolt Holes	Weight lbs.	Pieces/Bundle
3 1/16"	7/8"	1"	11 GA	4 5/16"	6	9/32"	0.70	48
4 1/16"	15/16"	1"	11 GA	5 5/16"	6	9/32"	0.85	48
5 1/16"	1"	1"	11 GA	6 5/16"	6	9/32"	1.18	24
6 3/32"	1"	1"	11 GA	7 5/16"	6	9/32"	1.38	24
7 1/8"	1"	1 1/8"	11 GA	8 1/2"	6	3/8"	1.73	12
8 1/8"	1"	1 1/8"	11 GA	9 9/16"	6	3/8"	1.90	12
9 1/8"	1 1/8"	1 1/4"	11 GA	10 5/8"	6	7/16"	2.55	12
10 1/8"	1 1/4"	1 3/8"	11 GA	11 13/16"	6	7/16"	3.05	12
11 1/8"	1 1/4"	1 1/2"	11 GA	12 3/4"	6	7/16"	3.25	12
12 1/8"	1 1/4"	1 1/2"	11 GA	14"	8	7/16"	3.88	12
13 1/8"	1 1/2"	1 1/2"	11 GA	15"	8	7/16"	4.25	24
14 1/8"	1 1/2"	1 1/2"	11 GA	16"	8	7/16"	4.75	24

Stocked in:  
- HR      - Stainless Steel      - Aluminum      - Zinc plated



STANDARD PRESSED ANGLE RINGS



STANDARD ROLLED ANGLE RINGS

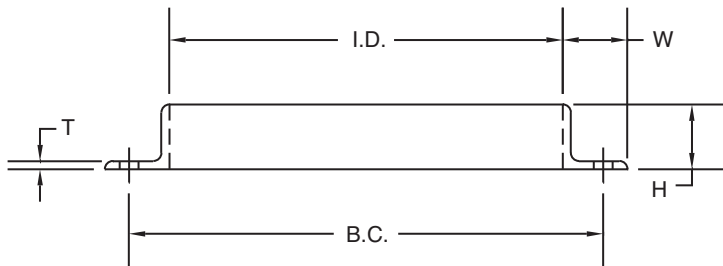
- Roll-formed, welded hot rolled steel.
- Sizes 10" to 60" ship today, smaller and larger sizes made to order.
- With or without holes.
- Leg-in or leg-out.
- Precise measurements to ensure an easy tight fit.
- Flat bar rings available in sizes 14" and larger.
- Square and rectangular flanges can be fabricated in angle iron, flat bar or plate.
- Available in custom sizes and materials, including Galvanized, Stainless Steel and Aluminum.
- Precision punched.
- Hot Dipped Galvanized available 15" to 48".





Standard Rolled Angle Rings								
Inside Diameter	H	W	T	Bolt Hole Centers	No. of Bolt Holes	Size of Bolt Holes	Weight lbs.	Pieces/Bundle
6 1/8"	1"	1"	1/8"	7 5/16"	6	9/32"	1.25	-
7 1/8"	1"	1"	1/8"	8 5/16"	6	3/8"	1.50	-
8 1/8"	1"	1"	1/8"	9 5/16"	6	3/8"	1.75	-
9 1/8"	1"	1"	1/8"	10 5/16"	6	7/16"	1.88	-
10 1/8"	1 1/2"	1 1/2"	3/16"	11 13/16"	6	7/16"	4.75	24
11 1/8"	1 1/2"	1 1/2"	3/16"	12 3/4"	6	7/16"	5.25	24
12 1/8"	1 1/2"	1 1/2"	3/16"	14"	8	7/16"	5.65	24
13 1/8"	1 1/2"	1 1/2"	3/16"	15"	8	7/16"	6.13	24
14 1/8"	1 1/2"	1 1/2"	3/16"	16"	8	7/16"	6.50	24
15 1/8"	1 1/2"	1 1/2"	3/16"	17"	8	7/16"	7.25	24
16 1/8"	1 1/2"	1 1/2"	3/16"	18"	8	7/16"	8.00	24
17 1/8"	1 1/2"	1 1/2"	3/16"	19"	8	7/16"	8.25	24
18 1/8"	1 1/2"	1 1/2"	3/16"	20"	8	7/16"	8.50	24
19 1/8"	1 1/2"	1 1/2"	3/16"	20 3/4"	12	7/16"	8.75	24
20 1/8"	1 1/2"	1 1/2"	3/16"	21 3/4"	12	7/16"	9.50	24
21 1/8"	1 1/2"	1 1/2"	3/16"	22 3/4"	12	7/16"	10.25	24
22 1/8"	1 1/2"	1 1/2"	3/16"	23 3/4"	12	7/16"	10.75	24
23 1/8"	1 1/2"	1 1/2"	3/16"	24 7/8"	12	7/16"	11.25	24
24 1/8"	1 1/2"	1 1/2"	3/16"	25 7/8"	12	7/16"	11.50	24
25 1/8"	1 1/2"	1 1/2"	3/16"	26 7/8"	16	7/16"	12.00	24
26 1/8"	2"	2"	3/16"	28 3/8"	16	7/16"	16.75	12
27 1/8"	2"	2"	3/16"	29 3/8"	16	7/16"	17.38	12
28 1/8"	2"	2"	3/16"	30 3/8"	16	7/16"	18.00	12
29 1/8"	2"	2"	3/16"	31 3/8"	16	7/16"	18.75	12
30 1/8"	2"	2"	3/16"	32 3/8"	16	7/16"	19.50	12
31 1/8"	2"	2"	3/16"	33 3/8"	16	7/16"	20.38	12
32 1/8"	2"	2"	3/16"	34 3/8"	16	7/16"	20.75	12
33 1/8"	2"	2"	3/16"	35 3/8"	16	7/16"	21.25	12
34 1/8"	2"	2"	3/16"	36 3/8"	16	7/16"	22.00	12
35 1/8"	2"	2"	3/16"	37 3/8"	16	7/16"	22.50	12
36 1/8"	2"	2"	3/16"	38 3/8"	16	7/16"	23.00	12
37 1/8"	2"	2"	3/16"	39 3/8"	24	7/16"	23.75	6
38 1/8"	2"	2"	3/16"	40 3/8"	24	7/16"	24.50	6
39 1/8"	2"	2"	3/16"	41 3/8"	24	7/16"	25.00	6

Standard Rolled Angle Rings								
Inside Diameter	H	W	T	Bolt Hole Centers	No. of Bolt Holes	Size of Bolt Holes	Weight lbs.	Pieces/Bundle
40 1/8"	2"	2"	3/16"	42 3/8"	24	7/16"	25.75	6
41 1/8"	2"	2"	3/16"	43 3/8"	24	7/16"	26.13	6
42 1/8"	2"	2"	3/16"	44 3/8"	24	7/16"	26.50	6
43 1/8"	2"	2"	3/16"	45 3/8"	24	7/16"	27.38	6
44 1/8"	2"	2"	3/16"	46 3/8"	24	7/16"	28.00	6
45 1/8"	2"	2"	3/16"	47 3/8"	24	7/16"	28.63	6
46 1/8"	2"	2"	3/16"	48 3/8"	24	7/16"	29.00	6
47 1/8"	2"	2"	3/16"	49 3/8"	24	7/16"	29.88	6
48 1/8"	2"	2"	3/16"	50 3/8"	24	7/16"	30.75	6
49 1/8"	2"	2"	3/16"	51 3/8"	24	7/16"	31.50	6
50 1/8"	2"	2"	3/16"	52 3/8"	24	7/16"	32.00	6
51 1/8"	2"	2"	3/16"	53 3/8"	24	7/16"	32.75	6
52 1/8"	2"	2"	3/16"	54 3/8"	24	7/16"	33.38	6
53 1/8"	2"	2"	3/16"	55 3/8"	24	7/16"	34.00	6
54 1/8"	2"	2"	3/16"	56 3/8"	24	7/16"	34.75	6
55 1/8"	2"	2"	3/16"	57 3/8"	32	7/16"	35.38	6
56 1/8"	2"	2"	3/16"	58 3/8"	32	7/16"	36.00	6
57 1/8"	2"	2"	3/16"	59 3/8"	32	7/16"	36.50	6
58 1/8"	2"	2"	3/16"	60 3/8"	32	7/16"	37.00	6
59 1/8"	2"	2"	3/16"	61 3/8"	32	7/16"	37.75	6
60 1/8"	2"	2"	3/16"	62 3/8"	32	7/16"	38.50	6
61 1/8"	2"	2"	3/16"	63 3/8"	32	7/16"	39.00	6
62 1/8"	2"	2"	3/16"	64 3/8"	32	7/16"	39.75	6
63 1/8"	2"	2"	3/16"	65 3/8"	32	7/16"	40.38	6
64 1/8"	2"	2"	3/16"	66 3/8"	32	7/16"	41.00	6
65 1/8"	2"	2"	3/16"	67 3/8"	32	7/16"	41.75	6
66 1/8"	2"	2"	3/16"	68 3/8"	32	7/16"	42.38	6
67 1/8"	2"	2"	3/16"	69 3/8"	32	7/16"	43.00	6
68 1/8"	2"	2"	3/16"	70 3/8"	32	7/16"	43.50	6
69 1/8"	2"	2"	3/16"	71 3/8"	32	7/16"	44.25	6
70 1/8"	2"	2"	3/16"	72 3/8"	32	7/16"	44.88	6
71 1/8"	2"	2"	3/16"	73 3/8"	32	7/16"	45.50	6
72 1/8"	2"	2"	3/16"	74 3/8"	32	7/16"	46.25	6



Elbows			
Diameter	C.L.R.	GA	Weight (lbs.)
90° Long Radius			
3"	7 1/2"	20	2.40
4"	10"	22	4.00
5"	12 1/2"	22	6.00
6"	15"	22	8.00
7"	17 1/2"	22	10.00
8"	20"	22	13.00
9"	22"	20	18.00
10"	25"	20	22.00
11"	27 1/2"	20	26.00
12"	30"	20	33.00
13"	32 1/2"	20	35.00
14"	35"	20	38.00
45° Long Radius			
3"	7 1/2"	20	1.50
4"	10"	22	2.50
5"	12 1/2"	22	3.50
6"	15"	22	4.50
7"	17 1/2"	22	6.00
8"	20"	22	8.00
9"	22 1/2"	20	12.00
10"	25"	20	14.75
11"	27 1/2"	20	16.50
12"	30"	20	18.75
13"	32 1/2"	20	21.00
14"	35"	20	23.50
60° Long Radius			
4"	10"	22	2.90
5"	12 1/2"	22	4.40
6"	15"	22	5.50
7"	17 1/2"	22	6.80
8"	20"	22	9.40
10"	25"	20	16.00
12"	30"	20	22.50
90° Short Radius			
3"	4 1/2"	20	2.00
4"	6"	22	3.50
5"	7 1/2"	22	5.00
6"	9"	22	6.25
7"	10 1/2"	22	7.00
8"	12"	22	9.00
9"	13 1/2"	20	15.00
10"	15"	20	18.00
11"	16 1/2"	20	20.00
12"	18"	20	26.00
13"	19 1/2"	20	29.00
14"	21"	20	31.00

## ELBOWS

### Koger Air One-Piece Galvanized Elbows

- Machines developed by Koger produce one-piece elbows.
- Galvanized steel with tight seams and smooth interiors for quiet, efficient airflow.
- With or without flanges; flanges add to list price.





GORED ELBOWS



Standard Gored Elbows											
Diameter	C.L.R.	No. Pieces	GA	WT	GA	WT	GA	WT	GA	WT	Diameter
15"	29 1/2"	7	18	35	16	43	14	53	12	73	15"
16"	32"	7	18	54	16	56	14	82	12	113	16"
17"	32 1/2"	7	18	54	16	66	14	82	12	113	17"
18"	33"	7	18	54	16	66	14	82	12	113	18"
19"	33 1/2"	7	18	54	16	66	14	82	12	113	19"
20"	40"	7	18	69	16	85	14	105	12	145	20"
21"	43 1/2"	9	18	78	16	95	14	118	12	156	21"
22"	44"	9	18	86	16	106	14	131	12	180	22"
23"	47 1/2"	9	18	90	16	112	14	138	12	190	23"
24"	48"	9	18	95	16	138	14	170	12	235	24"
25"	48 1/2"	9			16	146	14	180	12	250	25"
26"	52"	9			16	150	14	196	12	272	26"
27"	55 1/2"	9			16	175	14	215	12	295	27"
28"	56"	9			16	185	14	230	12	320	28"
29"	56 1/2"	9			16	200	14	250	12	340	29"
30"	60"	9			16	215	14	265	12	365	30"
31"	60 1/2"	9			16	265	14	330	12	455	31"
32"	64"	9			16	265	14	330	12	455	32"
33"	64 1/2"	9			16	265	14	330	12	455	33"
34"	65"	11			16	265	14	330	12	455	34"
35"	69 1/2"	11					14	360	12	500	35"
36"	72"	11					14	360	12	500	36"
37"	72 1/2"	11					14	360	12	500	37"
38"	73"	11					14	360	12	500	38"
39"	73 1/2"	11					14	475	12	650	39"
40"	74"	11					14	475	12	650	40"
41"	74 1/2"	11					14	475	12	650	41"
42"	75"	11					14	475	12	650	42"
43"	75 1/2"	11					14	475	12	650	43"
44"	76"	11					14	475	12	650	44"
45"	76 1/2"	11					14	660	12	900	45"
46"	77"	11					14	660	12	900	46"
47"	77 1/2"	11					14	660	12	900	47"
48"	78"	11					14	660	12	900	48"
49"	78 1/2"	11					14	660	12	900	49"
50"	79"	11					14	660	12	900	50"

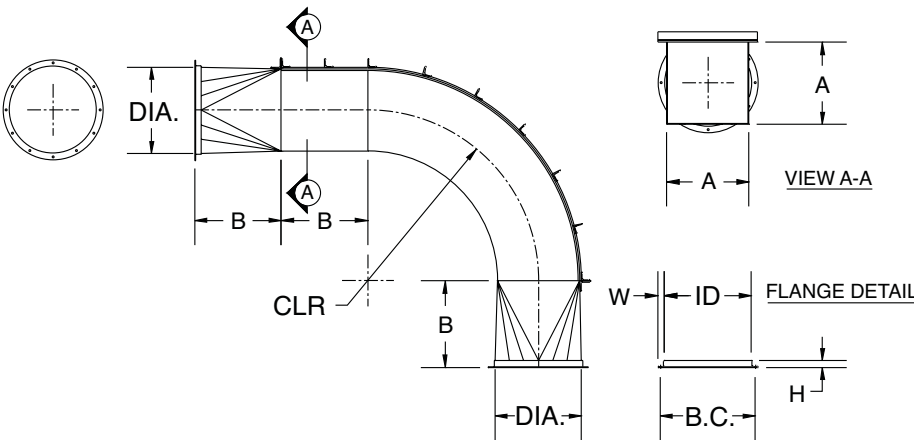
- Available in custom sizes, gauges and materials.
- With or without flanges.
- Priced per customer's specifications.

REPLACEABLE BACK ELBOWS



- Ideal for use in areas of heavy abrasion.
- Flanged construction standard.
- Available in custom sizes and materials.
- Priced per customer's specifications.

Standard Heavy Duty, Replaceable Back Elbows														
Diameter	A	B	C.L.R.	Housing Gauge	Sq to Rd Gauge	Wrapper Gauge	ID	H	W	B.C.	No. of Holes	Hole Dia.	WT	Diameter
6"	5"	6"	12"	12	12	10	6 3/32"	1"	1"	7 5/16"	6	9/32"	80	6"
7"	6"	7"	14"	12	12	10	7 1/8"	1"	1 1/8"	8 5/16"	6	3/8"	100	7"
8"	7"	8"	16"	12	12	10	8 1/8"	1"	1 1/8"	9 5/16"	6	3/8"	120	8"
9"	8"	9"	18"	12	12	10	9 1/8"	1 1/8"	1 1/4"	10 5/16"	6	7/16"	140	9"
10"	9"	10"	20"	12	12	10	10 1/8"	1 1/4"	1 3/8"	11 13/16"	6	7/16"	160	10"
11"	10"	11"	22"	12	12	10	11 1/8"	1 1/4"	1 3/8"	12 3/4"	6	7/16"	180	11"
12"	11"	12"	24"	12	12	10	12 1/8"	1 1/4"	1 1/2"	14"	8	7/16"	200	12"
13"	12"	13"	26"	12	12	10	13 1/8"	1 1/2"	1 1/2"	15"	8	7/16"	220	13"
14"	13"	14"	28"	12	12	10	14 1/8"	1 1/2"	1 1/2"	16"	8	7/16"	240	14"
15"	14"	15"	30"	10	12	3/16"	15 1/8"	1 1/2"	1 1/2"	17"	8	7/16"	300	15"
17"	16"	17"	34"	10	12	3/16"	17 1/8"	1 1/2"	1 1/2"	18"	8	7/16"	380	17"
19"	18"	19"	38"	10	12	3/16"	19 1/8"	1 1/2"	1 1/2"	20 3/4"	12	7/16"	500	19"
21"	20"	21"	42"	10	12	3/16"	21 1/8"	1 1/2"	1 1/2"	22 3/4"	12	7/16"	550	21"
23"	22"	23"	46"	10	10	1/4"	23 1/8"	1 1/2"	1 1/2"	24 7/8"	12	7/16"	600	23"
26"	25"	26"	52"	10	10	1/4"	26 1/8"	2"	2"	28 3/8"	16	7/16"	1200	26"





STANDARD  
DIVERTER VALVES



Diverter Valves

- 16 gauge to 10 gauge carbon steel in sizes 8" to 24".
- Manual, pneumatic or electric operated.
- Flanged connections allow easy installation.
- Suitable for both air and material handling systems.
- Available in custom sizes and materials.
- Shop drawings available.
- Not a stock item.
- Options:
  - Removable Side Plates
  - Access Door

BLAST GATES



Blast Gates

- 10 gauge steel in sizes 4" to 24" , larger sizes available.
- 4" to 20" Manual operated blast gates are normally in stock.
- Manual, pneumatic or electric operated.
- Flanged connections allow easy installation.
- Provides a more positive seal than cut-offs.
- Works efficiently with positive or negative pressure.
- Available in custom sizes and materials.
- Available with square inlets and outlets.
- Shop drawings available.

CUT-OFFS



Cast Aluminum Cut Offs

- Locking screws permit manual blade adjustment for volume control.
- Total airflow can be shut off for energy conservation.

Diameters Available

Half Cut-Offs	Full Cut-Offs
3"	2"
4"	3"
5"	4"
6"	5"
7"	6"
8"	7"
9"	8"
10"	9"
11"	10"
12"	11"
14"	12"
16"	14"
	16"
	18"
	20"

CLEANOUTS



Cast Aluminum Bolted Curved Cleanouts

Pipe Diameter	Opening Size
6"	4" x 7" oval
8"	4" x 7" oval
10"	4" x 7" oval
12"	4" x 7" oval
14"	4 1/2" x 9" oval
16"	4 1/2" x 9" oval
20"	9" x 18" oval

Cast Aluminum Hinged Curved Cleanouts

Pipe Diameter	Opening Size
6"	4" x 7" oval
8"	4" x 7" oval
10"	4" x 7" oval
12"	4" x 7" oval
14"	4 1/2" x 9" oval
16"	4 1/2" x 9" oval

Flat Cleanouts

Bolted Flat Cleanouts	Hinged Flat Cleanouts*
4 1/2" x 9" oval	4 1/2" x 9" oval
9" x 18" oval	9" x 18" oval

\* Quick-opening hinged cleanouts can be used for easy product sampling while system is in operation or for emergency servicing or unplugging.

Round Carbon Steel Cleanouts

Each cleanout has a large opening with easy opening, locking latch, and positive seal.

Round Carbon Steel Cleanouts

Opening Size	Overall Height	Weight (lbs.)
10" O.D.	4 5/16	14
12" O.D.	4 5/16	17

ACCESS DOORS



Square Cast Aluminum Access Door

- 18" x 18" hinged.



## FITTINGS



### Tee On Tapers

The most widely used branch fittings in the blowpipe industry. 90° to 15°, with or without angle rings.

- Tee on pipe – 15° to 90°, with or without angle rings
- Tees to fit pipe – 15° to 90°, with or without angle rings
- Y Branches
- Taper Joints – on center or offset
- Custom Manifolds
- Made to order in custom sizes and gauges in galvanized steel or hot rolled and stainless steel.
- Priced per customer's specifications.



### Transitions

- A streamlined change from rectangle to round.
- Used for equipment connections at fan discharge outlets, collector inlets, etc.
- Furnished with or without flanged construction on both ends.
- Available on center, offset or double offset.



### Support Bands

Two-piece pipe support hanger bands separate for easy installation and are secured with heavy duty bolts. Available in rolled flat bar or angle iron.

*Bands are priced per customer's specifications and are also made to order in custom sizes and materials.*



### Standard Galvanized Steel Pipe

Galvanized steel with riveted and soldered or welded seams with smooth interiors for quiet, efficient airflow, and large and small ends to facilitate lapping joints. Angle flanges can be furnished for field bolting.

Standard pipe is made in 4" to 60" diameters from 20 to 12 gauge, in 3' sections up to 11" in diameter and in 4' sections for 12" diameters and above.

*All pipe is priced per customer's specifications and is also made to order in custom sizes and materials including Mild Steel and Stainless. Larger sizes up to 3/16" thickness.*



### TD-HS Flexible Rubber Hose

Two ply vinyl coated polyester over wire with scuff strips (black with orange strips). Temperature range - 40° to 200°. 3" to 12". Call for pricing.

### 620-WD Heavy Duty Flexible Rubber Hose

One layer of black rubber over wire, abrasion resistant and lightweight. It is designed for more abrasive material handling, wood chips and sawdust and rated to 220°F. 3" to 12". Call for pricing.

## RUBBER FLEX HOSE



### Standard Floor Sweeps

- Installed near machines in areas not serviced by dust collection system.
- Tightfitting door prevents air loss when floor sweep is not in use.
- 4" to 6", 16 gauge. Call for pricing.
- Made to order in custom size connections.
- With or without angle ring.

## STANDARD FLOOR SWEEPS



### Spun Steel Ball Joints

- 3" to 14".
- Call for pricing.

## BALL JOINTS



### Heavy Duty Tubing Elbows

- Available in sizes 3" to 10".
- With or without angle rings.
- Call for pricing.

## HEAVY DUTY TUBING ELBOWS





# FABRICATION CAPABILITIES



## Custom Fabrication

At Koger Air Corporation, we believe that the right people coupled with the right materials and tools are the keys to meeting the exact needs of our customers.

Trained and experienced project managers are equipped with the latest CAD capabilities and staff computer programmers develop all industry-specific software to drive our plasma arc cutting systems. In recent years, we have been asked to program, form and fabricate thousands of customized shapes for a variety of industrial applications.

Our shop fabricators are highly specialized in forming and fabricating industrial strength steel parts and our installation mechanics are fully equipped to travel throughout North America to complete each project to 100% customer satisfaction.

### Braking

- Up to 14' of 3/8" Mild Steel Plate

### Rolling (Flat Metal)

- Up to 10' of 3/8" Mild Steel or 1/4" plate of Abrasion Resistant Steel

### Rolling (Angle and Flat-Bar)

- Up to 3" x 3" x 3/8" leg-out angle iron, 2" x 2" x 1/4" leg-in angle iron, 3" x 3/8" flat-bar.

### Shearing

- Up to 10' of 1/4" thick Mild Steel Plate.

### Burning

- Up to 2" Mild Steel Plate

### Blanking, Drawing and Stamping

### Cutting and Punching

### Materials Handling

### Welding

### Pipe Seam Welding

### Pressure Cleaning and Painting

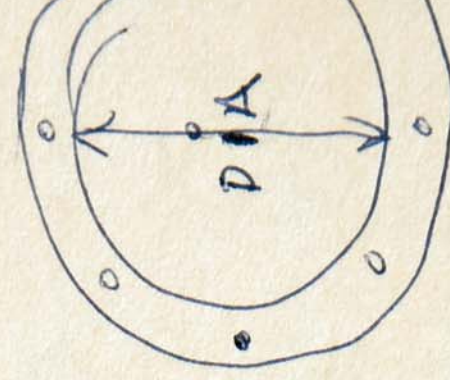
# FACILITIES



Koger Air Corporation's 100,000 square foot operation is centrally located between Roanoke, Virginia and Greensboro, North Carolina. This operation consists of three separate manufacturing plants, warehouse and service center stocked with components and material handling equipment for factory direct shipment today.



PLACABLE BACK E



R DIA  
HOLE (F)  
CENTERS

SIZES:

DO HOLES	WRAPPER GAUGE	W
	10	
	10	
	10	



Below: Founder J. A. Koger proudly poses with his air handling systems, circa 1965.







Koger Air Corporation  
P.O. Box 2098  
Martinsville, Virginia 24113  
276.638.8821 phone  
800.368.2096 toll free  
800.554.4040 fax  
koger@kogerair.com  
www.kogerair.com