

VAF



HORUS AIR MOVING
和旭風機



VAF



AXIAL FANS
軸流風機



MEMBER OF THE CTI





VAF 系列－軸流風機

Series VAF, Axial Fans



Horus Air Moving Co., Ltd. certifies that the VAF axial fans model 560, 710, 1000, and 1250 shown herein are licensed to bear the AMCA Seal. The ratings shown are based on tests and procedures performed in accordance with AMCA Publication 211 and AMCA Publication 311 and comply with the requirements of the AMCA Certified Ratings Program.

All of the axial fans described herein are licensed to bear the AMCA Seal, and their certified ratings are shown on pages 9 through 16.

和旭機械股份有限公司特此證明，此處所示 VAF-560、VAF-710、VAF-1000、VAF-1250 軸流風機獲得了加蓋 AMCA 印章的授權。所示額定值係根據 AMCA 出版物 211 和 AMCA 出版物 311 所進行測試和程序確定，並符合 AMCA 認證額定值計畫的要求。

此型錄描述的軸流風機都已取得 AMCA 認證，其認證數據參見第九到十六頁。

配產品概述 Outline of Product

VAF系列為本公司之軸流風機，具有通用性強、效率高、耗能少等特點。氣流方向與安裝方向平行，免除轉接風管的損失。佔地小，風量大，特別適用於安裝空間不足之場所。

Model VAF fan is an axial fan. Some of the features and characteristics of these ventilators are: a wide range of applications, high efficiency, and low power consumption. Since the suction direction and release direction of axial fans are aligned in straight-line to the motion, it can avoid the friction loss by the duct. This type of fans is driven by airflow on blades, thus making it possible to attain maximum air volume in minimum space.



軸流式風機



耐溫軸流式風機

產品命名方式 Product Nomenclature



產品結構 Construction of Product

此風機主要由機殼、葉輪及馬達構成。

1. 機殼

機殼可採以鋼板旋壓製作，或採用重結構設計，以優質碳鋼焊接製成。法蘭採一體成型或焊接於兩端之外緣。其他如不銹鋼材質或熱浸鍍鋅鋼板亦可採用。

2. 葉輪

葉輪採用鋁合金壓鑄而成，翼截式葉片設計符合空氣動力的特定形狀，使得效率最高、噪音最低。葉片用夾塊固定在葉盤上，葉盤採用雷射切割一體成型，在最大功率連續運轉時，葉輪具有足夠的剛度。葉輪按ISO1940-1的動平衡精度G2.5等全檢合格。

3. 馬達

採用符合CNS-14400高效率馬達，防護等級IP-54，全密閉鼠籠形，規格符合IEC 34標準。

The major components of the ventilators include the housing, impeller, bearings, shaft and motor.

1. Housing

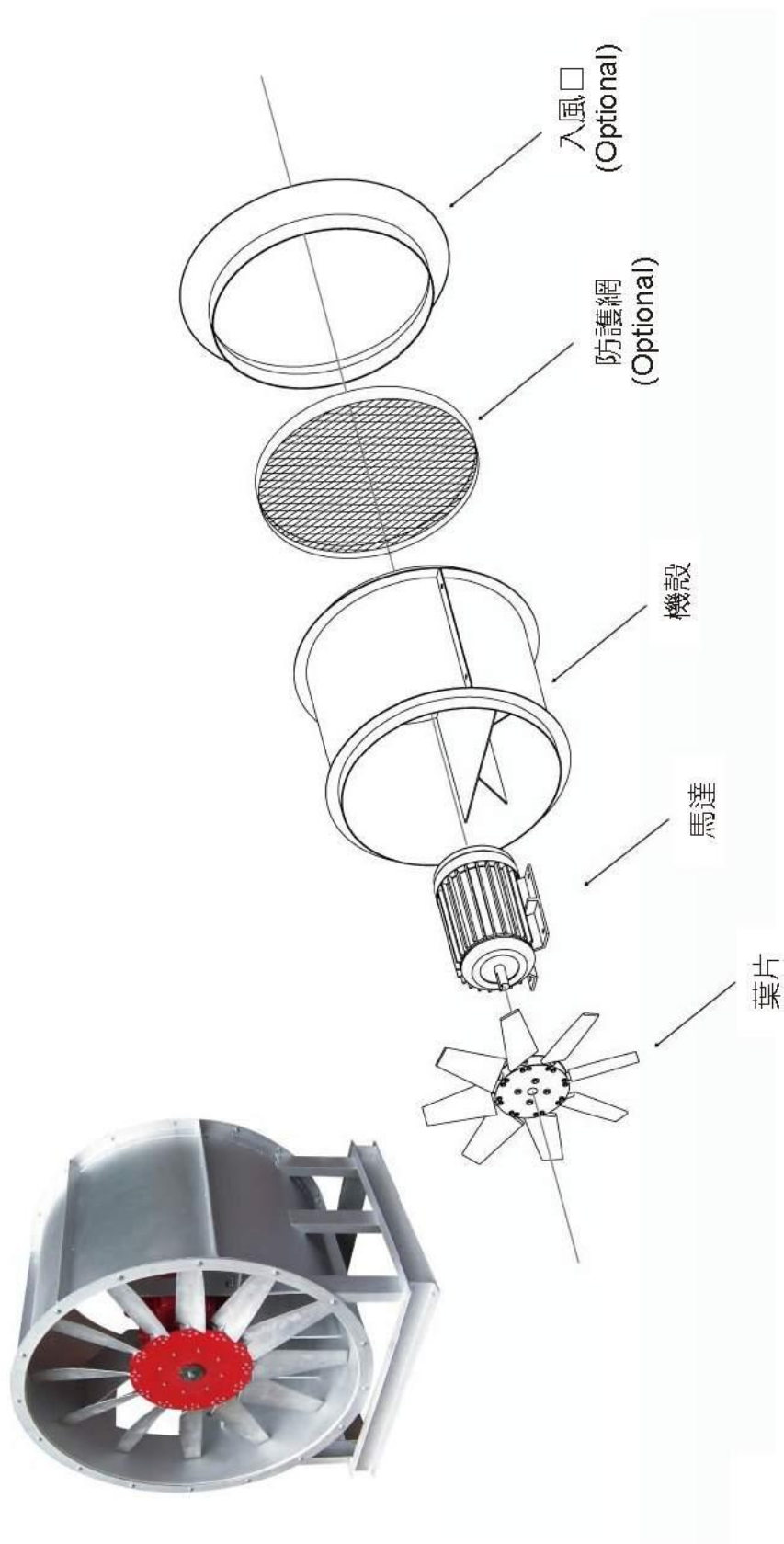
The housing is spun of sheet galvanized steel or welded steel sheet. The flange could be automatic formed or welded by flat or angle rolled steel. In addition, the stainless or hot galvanized steel material is also provided.

2. Impeller

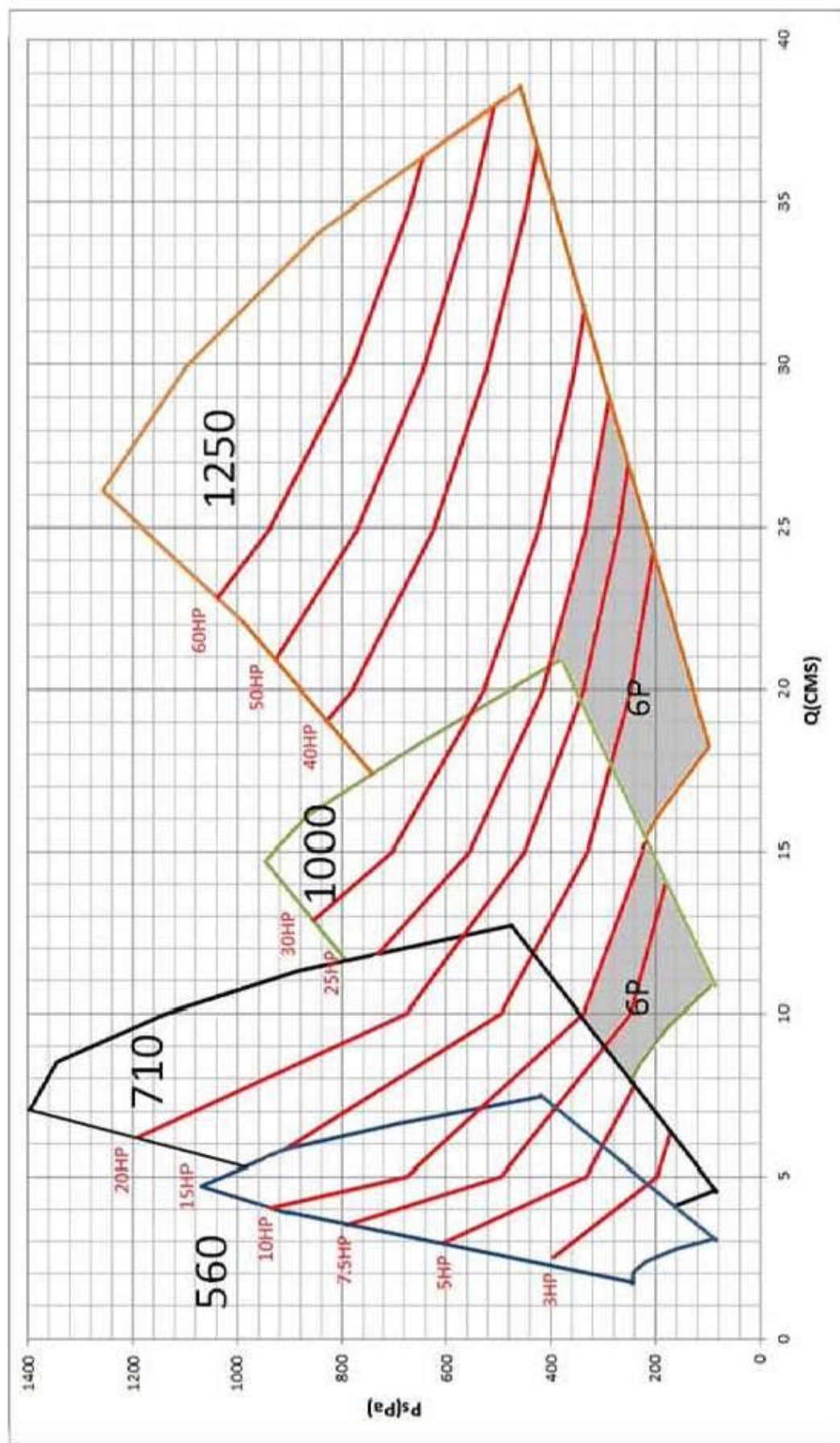
The impeller is made of die- cast aluminum alloy, and airfoil blade design is configured to provide a highly efficient and low noise aerodynamic flow path. The blade is fixed to the hub by holder. The hub is made of laser cutting. The impeller strength is sufficient for it to operate continuously at maximum power. The impellers are balanced before assembly in accordance with ISO1940-1, G2.5 requirement.

3. Motor

Motors have high efficiency design in accordance with CNS-14400 and use as standard closed squirrel cage motors rated to IEC 34. The standard motors have enclosure IP 54 protection.



性能曲線總表 Performance Curve Chart



自由音場 Non-Directional Sound in a Free-Field

聲功率和聲壓之間的最簡單的關係為一個非方向性聲源的自由音場，其關係如下列方程式所示：

The simplest relation between sound power level and sound pressure level is found for a free-field, non-directional sound source, as given by the following equation:

$$L_p = L_{wi} - 20 \log_{10}(r) - k + T$$

L_p = sound pressure level (dB) re 20 μ Pa

L_{wi} = sound power level (dB) re 10⁻¹² watts

r = distance from the source in meters or feet

k = 11.0 dB for metric units and 0.5 dB for English units

T = correction factor for atmospheric pressure and temperature (dB) (since most industrial noise problems are concerned with air at or near standard conditions, T is usually negligible and, therefore, equals 0)

Example:

計算在自由音場中110 dB的聲功率距離聲源10英尺時的聲壓：

Consider a point source having a L_{wi} of 110 dB for a free-field . The sound pressure level at a distance of 10 feet from the source would be calculated as follows (since the source is found for a free-field, the equation for hemispherical radiation from a point source is used) :

$$L_p = L_{wi} - 20 \log_{10}(r) - k$$

therefore :

$$L_p = 110 \text{ dB} - 20 \log_{10}(20) - 0.5 = 89.5 \text{ dB}$$

聲功率計算 Calculating Sound Power Levels

依據ANSI/AMCA 301標準，聲功率與風量、全壓、轉速、直徑其關係如下列所示：

The generalized sound power for each frequency band shall be calculated by the following:

$$LwG=Lw-50\log(N/NR)-70\log(D/DR)$$

or

The specific sound power for each frequency band shall be calculated by the following:

$$LwK=Lw-10\log(Q/QR)-20\log(Pt/PtR)$$

D=Impeller diameter

Lw=sound power level (dB) re 10^{-12} watts

Pt=Fan total pressure

N=Fan speed of rotation

Q=Fan airflow rate

R=Reference values

Example:

計算VAF-560-6葉在4P(1750RPM)轉速，靜壓100Pa時之A計權聲功率級dB(A)?

靜壓100Pa，風量3.02CMS操作點之聲功率，由噪音資料中內插獲得：

125Hz時，靜壓100Pa的聲功率值為 $(100-86)/(161-86)=(Lw-92)/(90-92)$

$$Lw(125Hz)=91.6dB$$

其餘頻帶依此類推，結果如下表所示

Type	Blade Angle	Ps Pa	Q m³/s	Sound Power Level Lw, dB								LwA dB(A)
				63	125	250	500	1.0K	2.0K	4.0K	8.0K	
560-6	19	86	3.08	77	92	90	87	86	82	79	76	90.7
		161	2.75	77	90	89	87	84	82	78	75	89.8
560-6	19	100	3.02	77	91.6	89.8	87	85.6	82	78.8	75.8	90.5

型號	極數 /轉數	性能	Static Pressure (Pa)														
			100	200	300	400	500	600	700	800	900	1000	1100	1200	1300	1400	1500
560-6 -200	19	Q(CMS)	6.76	6.58	6.40	6.19	5.98	5.73	5.46	5.13	4.76	3.39	2.03	1.10	0.72	0.53	0.33
		BHP(kW)	6.53	6.76	6.98	7.2	7.42	7.63	7.81	7.94	8.02	7.27	6.66	6.5	6.65	6.91	7.17
	22	Q(CMS)	7.40	7.21	7.01	6.80	6.58	6.32	6.03	5.69	5.3	4.77	2.07	1.27	0.84	0.63	0.41
		BHP(kW)	7.58	7.88	8.19	8.48	8.69	8.91	9.11	9.21	9.29	9.12	7.74	7.77	8.05	8.38	8.72
	25	Q(CMS)	8.06	7.89	7.70	7.49	7.26	6.99	6.69	6.31	5.84	5.18	1.72	1.00	0.77	0.54	0.32
		BHP(kW)	9.31	9.57	9.83	10.08	10.31	10.53	10.74	10.84	10.94	10.52	9.28	9.69	10.05	10.41	10.77
560-6 -200	19	Q(CMS)	3.02	2.49	0.47												
		BHP(kW)	0.87	0.95	0.78												
	22	Q(CMS)	3.31	2.76	0.49												
		BHP(kW)	1.02	1.11	0.94												
	25	Q(CMS)	3.65	3.05	0.47												
		BHP(kW)	1.21	1.3	1.18												
560-12 -200	19	Q(CMS)	2.95	2.7	2.18	0.62	0.23										
		BHP(kW)	1.13	1.28	1.3	1.14	1.24										
	22	Q(CMS)	3.40	3.17	2.63	0.69	0.26										
		BHP(kW)	1.33	1.5	1.56	1.35	1.48										
	25	Q(CMS)	3.82	3.55	2.98	0.59	0.19										
		BHP(kW)	1.65	1.83	1.94	1.67	1.87										

Performance certified is for installation type B-free inlet, Ducted outlet.

Performance ratings do not include the effects of appurtenances (accessories).



FEG 71



FEG 71



FEG 63

Inlet Sound Power-4P (1750RPM)

Type	Blade Angle	P_s Pa	Q m³/s	Sound Power Level L_w , dB								L_{wiA} dB(A)
				63	125	250	500	1.0K	2.0K	4.0K	8.0K	
560-6 -200	19	0	3.42	79	95	91	88	87	83	80	77	91.8
		86	3.08	77	92	90	87	86	82	79	76	90.7
		161	2.75	77	90	89	87	84	82	78	75	89.8
		241	2.06	79	90	91	93	90	86	80	76	94.6
	22	0	3.74	79	93	91	89	87	83	81	77	92.0
		91	3.36	78	94	90	88	86	82	79	76	91.0
		168	2.97	78	90	89	88	85	81	78	75	90.2
		258	2.00	79	91	89	89	87	84	80	76	91.8
	25	0	4.07	80	92	91	90	88	84	80	77	92.6
		102	3.66	80	93	91	90	86	82	79	75	91.3
		169	3.26	79	91	90	88	85	81	78	75	90.3
		260	2.32	81	91	90	89	88	85	80	77	92.5
560-12 -200	19	0	3.14	83	78	91	91	90	87	85	79	94.6
		165	2.82	82	75	91	89	88	86	83	79	93.1
		259	2.50	83	73	91	90	88	86	83	75	93.3
		298	2.20	84	78	92	85	92	89	83	77	96.7
	22	0	3.60	83	79	93	93	92	87	85	80	96.0
		179	3.25	82	75	93	91	90	85	82	79	94.1
		273	2.89	82	74	91	90	88	85	81	78	92.8
		326	2.37	82	76	92	94	91	88	83	78	95.8
	25	0	4.02	82	79	95	95	92	88	85	80	96.9
		180	3.60	84	77	93	92	90	85	82	78	94.4
		269	3.21	84	76	93	91	89	85	81	77	93.6
		320	2.82	85	79	93	93	90	87	83	78	95.1

The A-weighted sound ratings shown have been calculated per AMCA International Standard 301. Values shown are for inlet L_{wi} and L_{wiA} sound power levels for installation Type B: free inlet, ducted outlet. The sound power level ratings shown are in decibels, referred to 10^{-12} watts, calculated per AMCA International Standard 301.



FEG 71



FEG 71



FEG 67

型號	極數 /轉數	性能	Static Pressure (Pa)																			
			100	200	300	400	500	600	700	800	900	1000	1100	1200	1300	1400	1500	1600	1700	1800	1900	2000
710-6 -200	12	Q(CMS)	10.07	9.79	9.50	9.19	8.88	8.55	8.21	7.78	7.35	6.85	6.26	5.52	4.47	3.31	2.1	1.15	0.78	0.38		
		BHP(kW)	9.81	10.16	10.51	10.82	11.06	11.3	11.52	11.64	11.76	11.73	11.65	11.31	10.75	10.09	9.12	8.38	8.16	7.94		
	15	Q(CMS)	11.73	11.45	11.14	10.82	10.46	10.13	9.8	9.45	8.92	8.40	7.80	7.05	6.00	4.45	3.03	1.56	1.05	0.67	0.31	
		BHP(kW)	12.77	13.21	13.65	14.06	14.25	14.45	14.64	14.83	15	15.15	15.03	14.76	14.2	13.18	12.34	11.42	11.45	11.64	11.82	
	19	Q(CMS)	13.93	13.64	13.35	13.04	12.72	12.38	12.02	11.63	11.19	10.72	10.18	9.55	8.84	7.45	4.21	2.54	1.73	1.16	0.71	0.46
710-6 -200	12	BHP(kW)	18.47	18.86	19.25	19.64	20.03	20.44	20.85	21.26	21.61	21.73	21.84	21.79	21.8	19.91	18.38	18.01	18.05	18.74	19.44	20.13
		Q(CMS)	4.51	3.77	2.54	0.49																
	15	BHP(kW)	1.3	1.4	1.34	0.99																
		Q(CMS)	5.3	4.6	3.2	0.61																
	19	BHP(kW)	1.69	1.78	1.75	1.36																
710-12 -200	12	Q(CMS)	6.37	5.67	4.59	1.12	0.1															
		BHP(kW)	2.36	2.56	2.6	2.14	2.46															
	15	Q(CMS)	4.68	4.35	3.87	3.18	1.94	0.65														
		BHP(kW)	2.12	2.30	2.42	2.46	2.32	2.03														
	19	Q(CMS)	5.52	5.19	4.68	3.99	2.46	0.74	0.21													
710-12 -200	12	BHP(kW)	2.53	2.76	2.98	3.02	2.81	2.47	2.57													
		Q(CMS)	6.64	6.31	5.79	4.98	2.88	1.04	0.31													
	15	BHP(kW)	3.05	3.33	3.60	3.74	3.39	3.16	3.48													
		Q(CMS)																				
	19	BHP(kW)																				

Performance certified is for installation type B-free inlet, Ducted outlet.
Performance ratings do not include the effects of appurtenances (accessories).

Inlet Sound Power-4P (1750RPM)

Type	Blade Angle	P_s Pa	Q m ³ /s	Sound Power Level L_w , dB								L_{wiA} dB(A)
				63	125	250	500	1.0K	2.0K	4.0K	8.0K	
710-6 -200	12	0	5.09	82	91	94	96	95	90	87	84	98.3
		87	4.59	81	90	94	95	93	89	86	83	97.0
		221	3.58	81	89	93	96	97	95	89	83	100.5
		301	2.54	85	91	98	99	96	91	87	82	100.0
	15	0	5.93	85	92	96	97	94	90	86	84	98.3
		192	4.69	83	91	95	96	94	92	87	83	98.4
		283	3.55	84	92	95	99	100	95	89	83	102.1
		335	2.35	88	93	99	101	98	93	88	83	101.9
	19	0	7.01	87	95	98	100	96	91	86	83	100.4
		115	6.27	87	94	98	99	95	90	85	82	99.5
		215	5.57	86	94	97	98	94	89	86	82	98.6
		327	4.19	85	95	98	100	99	94	89	84	102.1
710-12 -200	12	0	4.98	85	84	96	100	98	94	91	88	101.9
		177	4.46	82	82	96	101	97	95	93	88	102.3
		365	3.50	84	81	96	104	99	96	90	85	103.9
		421	2.98	88	85	101	102	97	94	89	83	102.3
	15	0	5.82	88	85	95	99	98	93	90	88	101.3
		187	5.25	86	85	96	100	97	93	89	87	101.1
		392	4.09	88	83	96	102	101	98	92	86	105.4
		472	2.89	93	88	104	103	98	94	89	84	103.4
	19	0	6.96	91	87	99	104	99	94	90	86	103.7
		217	6.26	89	84	99	103	98	94	89	86	102.9
		334	5.60	89	83	98	103	99	97	92	87	103.9
		412	4.87	89	84	98	105	102	99	93	86	106.1

The A-weighted sound ratings shown have been calculated per AMCA International Standard 301. Values shown are for inlet L_{wi} and L_{wiA} sound power levels for installation Type B: free inlet, ducted outlet. The sound power level ratings shown are in decibels, referred to 10^{-12} watts, calculated per AMCA International Standard 301.

型號			極數 /轉數	性能	Static Pressure (Pa)												
					100	200	300	400	500	600	700	800	900	1000	1100	1200	1300
1000-6-250	19	Q(CMS)		17.29	16.52	15.60	14.46	13.1	11.34	5.31	2.21	0.86					
		BHP(kW)		10.95	11.49	12.03	12.55	12.88	12.91	11.03	11.51	12.57					
		Q(CMS)		18.92	18.09	17.15	15.99	14.38	11.45	3.07	1.43	0.42					
	22	BHP(kW)		12.96	13.69	14.23	14.7	14.88	14.58	13.53	14.66	15.57					
		Q(CMS)		21.03	20.09	19.04	17.92	16.89	14.54	3.95	1.91	0.87					
		BHP(kW)		16.16	16.91	17.46	17.89	18.11	18.18	17.62	17.56	18.53					
1000-6-250	19	Q(CMS)		10.74	9.09	3.98	0.48										
		BHP(kW)		3.39	3.71	3.22	3.69										
		Q(CMS)		11.75	9.97	2.59	0.2										
	22	BHP(kW)		4.04	4.31	3.89	4.56										
		Q(CMS)		13.14	11.44	8.84	0.47										
		BHP(kW)		4.98	5.26	5.16	5.43										
1000-12-250	19	Q(CMS)		18.62	18.24	17.59	17	16.29	15.59	14.6	13.48	8.78	5.94	4.09	2.56	1.38	0.19
		BHP(kW)		14.23	15.31	16.39	17.35	18.16	18.98	19.59	20.12	17.8	17.66	17.69	18.01	18.87	19.72
		Q(CMS)		20.66	20.15	19.64	19.12	18.31	17.5	16.56	15.38	8.86	5.74	4.24	2.63	1.43	0.22
	22	BHP(kW)		17.96	18.91	19.85	20.79	21.78	22.77	23.59	24.05	23.58	21.03	21.54	22.37	23.3	24.24
		Q(CMS)		22.49	21.93	21.37	20.74	19.78	18.81	17.8	16.77	15.49	5.22	3.67	2.37	1.29	0.2
		BHP(kW)		21.39	22.42	23.45	24.5	25.65	26.8	27.58	28.11	28.22	24.44	25.32	26.22	27.14	28.06
1000-12-250	19	Q(CMS)		11.91	11.01	9.81	5.61	2.3	0.4								
		BHP(kW)		4.55	5.18	5.68	5.19	5.17	5.66								
		Q(CMS)		13.26	12.38	11.11	5.38	2.39	0.42								
	22	BHP(kW)		5.58	6.21	6.85	6.1	6.36	6.97								
		Q(CMS)		14.43	13.4	11.92	10.15	2.04	0.38								
		BHP(kW)		6.61	7.32	8.01	8.2	7.47	8.08								

Performance certified is for installation type B-free inlet, Ducted outlet.

Performance ratings do not include the effects of appurtenances (accessories).



FEG 75



FEG 75



FEG 71



FEG 71

Inlet Sound Power-4P (1750RPM)

Type	Blade Angle	Ps Pa	Q m³/s	Sound Power Level Lw, dB								LwiA
				63	125	250	500	1.0K	2.0K	4.0K	8.0K	dB(A)
1000-6 -250	19	0	18.13	90	100	106	103	102	98	92	87	106.2
		213	16.35	88	99	105	102	101	97	92	87	105.3
		396	14.53	88	98	105	103	100	96	92	88	105.0
		523	12.79	88	99	105	103	101	98	95	90	106.0
	22	0	19.70	91	101	106	104	103	99	93	88	107.1
		232	17.70	91	101	106	104	102	98	93	89	106.5
		400	15.85	91	101	107	104	101	98	94	90	106.6
		668	10.94	93	104	109	108	107	103	97	93	111.0
	25	0	21.96	92	101	106	105	104	100	94	89	107.9
		236	19.73	93	102	107	105	103	100	94	90	107.8
		430	17.62	91	101	107	104	101	98	95	97	106.7
		721	12.47	93	102	108	107	104	101	97	93	109.2
1000-12 -250	19	0	19.13	92	96	102	107	105	102	97	91	109.2
		357	17.30	92	95	101	107	104	101	95	90	108.3
		632	15.37	91	94	101	106	104	101	97	92	108.4
		812	13.34	91	96	100	109	108	104	99	93	111.7
	22	0	21.16	92	96	103	108	106	103	94	94	110.4
		400	19.12	91	95	103	108	105	101	95	90	109.4
		668	16.95	91	95	102	108	104	101	97	92	109.3
		853	14.76	91	96	103	1140	107	103	98	93	111.2
	25	0	23.06	93	97	105	110	106	103	97	91	110.9
		385	20.88	93	97	104	109	106	102	96	90	110.2
		642	18.40	92	96	103	109	105	101	96	91	109.9
		866	16.11	93	97	100	110	105	101	97	93	110.3

The A-weighted sound ratings shown have been calculated per AMCA International Standard 301. Values shown are for inlet L_{wi} and L_{wiA} sound power levels for installation Type B: free inlet, ducted outlet. The sound power level ratings shown are in decibels, referred to 10^{-12} watts, calculated per AMCA International Standard 301.

型號			極數 /轉數	性能	Static Pressure (Pa)																			
					100	200	300	400	500	600	700	800	900	1000	1100	1200	1300	1400	1500	1600	1700	1800	1900	
1250-6 -250			16	Q(CMS)	29.12	27.81	26.41	24.96	23.32	21.53	19.07	15.96	9.62	4.1	2.36	0.62								
				BHP(kW)	19.45	20.63	21.52	22.29	22.86	23.3	23.46	22.6	19.76	18.72	20.43	22.14								
			20	Q(CMS)	33.47	32.15	30.8	29.38	27.96	25.99	23.9	21.97	9.08	5.02	3.26	1.49								
				BHP(kW)	27.35	28.43	29.39	30.1	30.81	31.12	31.32	31.13	28.18	29.78	31.84	33.91								
				Q(CMS)	37.91	36.32	34.76	33.36	31.95	30.06	28.1	25.47	7.69	4.81	3.2	1.6								
1250-6 -250			16	BHP(kW)	38.27	39.15	39.98	40.58	41.19	41.16	41.01	40.33	38.26	41.02	43.25	45.49								
				Q(CMS)	18.19	15.99	12.92	5.97	1.13															
			20	BHP(kW)	6.1	6.6	6.83	5.7	6.14															
				Q(CMS)	21.07	18.96	16.13	5.74	1.71															
				BHP(kW)	8.37	8.88	9.13	8.25	9.5															
1250-6 -250			24	Q(CMS)	23.78	21.6	18.85	4.84	1.72															
				BHP(kW)	11.47	11.92	11.95	11.24	12.84															
			16	Q(CMS)	32.74	31.99	31.24	30.48	29.49	28.43	27.37	26.06	24.59	22.94	20.89	17.04	12.27	9.23	6.1	4.07	2.91	1.74	0.58	
				BHP(kW)	30.16	31.71	33.25	34.79	36.25	37.69	39.12	40.38	41.49	42.23	42	39.34	37.61	36.75	36.29	37.18	39.14	41.09	43.05	
				Q(CMS)	37.5	36.69	35.89	35.08	34.16	33	31.83	30.66	29.32	27.97	26.34	23.33	12.26	9.48	6.79	4.87	3.54	2.22	0.89	
1250-12 -250			20	BHP(kW)	40.33	42.08	43.82	45.56	47.21	48.64	50.07	51.48	52.52	53.56	54.16	52.66	47.52	48.4	49.35	50.98	53.13	55.29	57.45	
				Q(CMS)	41.72	40.84	39.95	39.07	38.08	36.92	35.76	34.6	33.17	31.51	29.86	27.52	10.77	7.28	5.24	4	2.76	1.52	0.28	
			24	BHP(kW)	52.82	54.57	56.32	58.07	59.72	61.16	62.61	64.06	65.11	65.85	66.59	65.84	57.39	58.98	61.29	63.99	66.69	69.4	72.1	
				Q(CMS)	21.07	19.86	18.26	16.19	13.29	6.82	2.75	1												
				BHP(kW)	9.36	10.37	11.32	12.12	12.18	10.78	10.79	12.09												
1250-12 -250			16	Q(CMS)	24.17	22.96	21.23	19.34	16.7	6.9	3.29	1.29												
				BHP(kW)	12.39	13.55	14.51	15.33	15.61	14	14.8	16.23												
			20	Q(CMS)	26.91	25.57	23.84	21.87	19.21	5.62	2.71	0.84												
				BHP(kW)	16.03	17.2	18.16	18.98	19.31	17.02	18.58	20.38												
				24																				

Performance certified is for installation type B-free inlet, Ducted outlet.

Performance ratings do not include the effects of appurtenances (accessories).

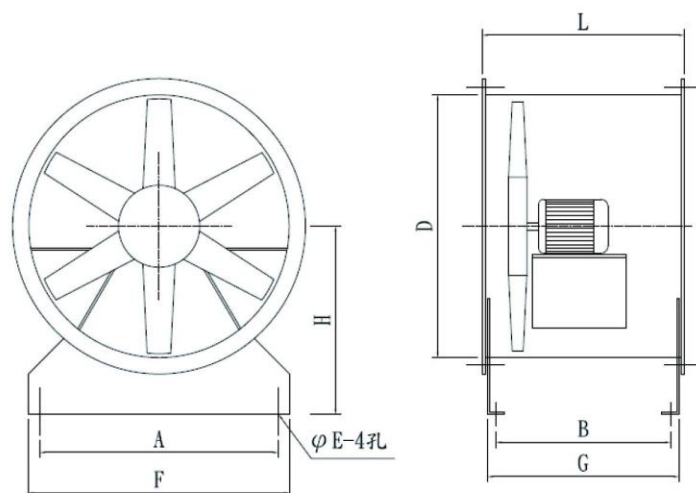


Inlet Sound Power-4P (1750RPM)

Type	Blade Angle	P _s Pa	Q m³/s	Sound Power Level L _w , dB								L _w iA
				63	125	250	500	1.0K	2.0K	4.0K	8.0K	dB(A)
1250-6 -250	16	0	30.42	94	105	114	112	108	105	99	94	113.5
		230	27.42	93	105	114	111	107	104	98	94	112.9
		438	24.38	94	106	115	111	106	103	98	95	112.5
		734	18.29	95	107	116	116	115	111	104	98	118.9
	20	0	34.78	95	106	115	112	109	106	99	95	114.2
		272	31.22	96	107	115	111	108	105	99	96	113.5
		504	27.90	95	106	115	111	108	105	99	96	113.5
		817	20.96	99	110	116	117	118	113	106	101	120.9
	24	0	39.49	98	109	117	114	111	107	101	97	116.1
		515	31.75	96	107	118	114	109	106	100	97	115.4
		732	27.48	97	108	118	114	108	105	101	98	115.4
		851	24.69	98	111	118	115	111	108	103	99	116.7
1250-12 -250	16	0	33.50	96	100	107	113	110	107	102	99	114.7
		421	30.30	94	99	107	113	108	106	102	98	113.8
		744	26.92	95	98	106	113	111	110	106	100	116.2
		1061	21.88	97	102	117	118	116	113	106	100	120.3
	20	0	38.31	98	102	109	115	111	108	102	97	115.7
		468	34.53	96	101	109	114	109	107	101	96	114.6
		793	30.73	97	103	116	114	109	107	102	98	115.3
		1191	24.35	98	105	114	119	117	114	107	100	121.4
	24	0	42.61	99	104	112	116	111	108	102	97	116.6
		464	38.51	97	103	111	115	110	108	102	97	115.6
		844	34.08	97	103	111	114	109	107	102	98	115.1
		1195	28.29	99	105	119	119	116	113	106	101	120.5

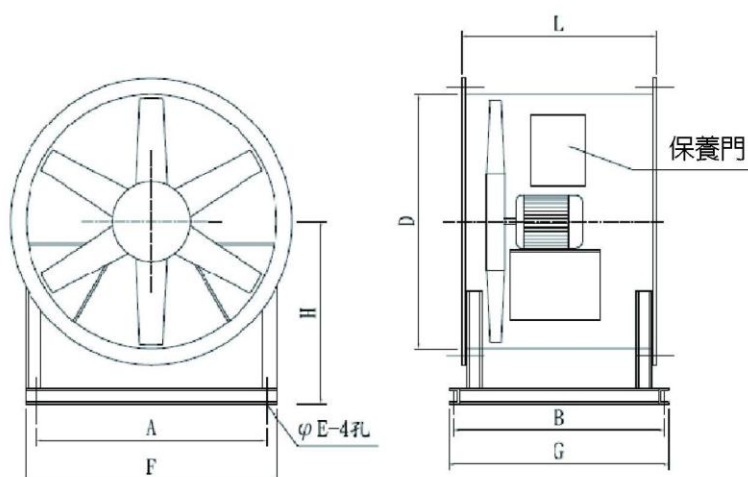
The A-weighted sound ratings shown have been calculated per AMCA International Standard 301. Values shown are for inlet L_{wi} and L_{wiA} sound power levels for installation Type B: free inlet, ducted outlet. The sound power level ratings shown are in decibels, referred to 10^{-12} watts, calculated per AMCA International Standard 301.

VAF系列之外型尺寸 Overall Dimension - VAF Series



尺寸表(單位: mm)

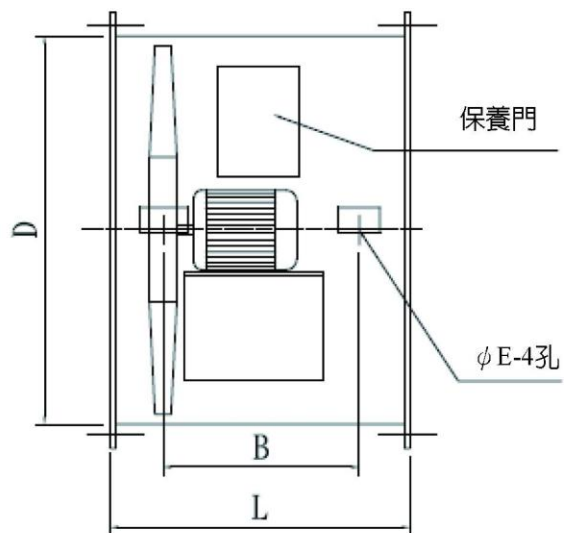
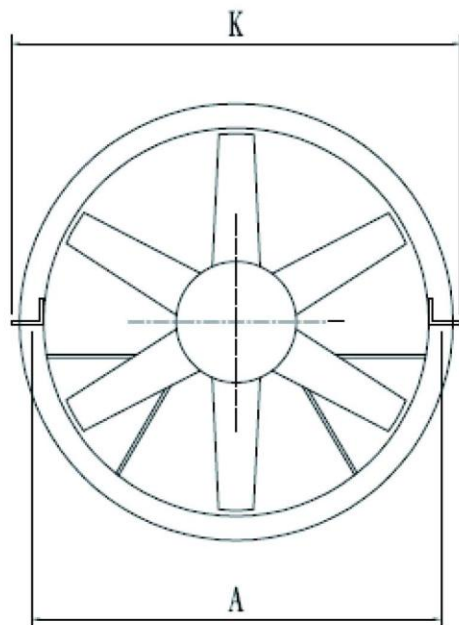
Model	A	B	φD	φE	F	G	H	L	適用最大馬力(HP)
560	470	625.4	580	15	570	630	405	680	10
710	600	625.4	740	15	700	780	485	680	25



尺寸表(單位: mm)

Model	A	B	φD	φE	F	G	H	L	適用最大馬力(HP)
1000	750	845	1000	15	850	910	645	800	30
1250	1000	930	1250	18	1100	980	795	900	75

VAF系列之外型尺寸 Overall Dimension - VAF Series



尺寸表(單位: mm)

Model	A	B	φD	φE	K	L	適用最大馬力(HP)
560	630	470	580	13	680	550	7.5
710	790	625	740	13	840	700	15
1000	1065	695	1000	16	1130	800	30
1250	1315	795	1250	16	1380	900	75



和旭機械股份有限公司
HORUS AIR MOVING CO., LTD.



金日實業股份有限公司
KING SUN INDUSTRY CO., LTD.

www.kingsun.com.tw

VAF. 101. February. 2016

台北總公司：台北市紹興南街5號
T：02-23417281 F：02-23219420 02-23560700
桃園分公司：桃園市桃園區中山路689號
T：03-2205130 F：03-2205132
新竹分公司：新竹市體育街6號
T：03-5618808 F：03-5618806
台中分公司：台中市西屯區台灣大道四段16巷180號
T：04-27082707 F：04-27003656
台南分公司：台南市仁德區太子里大吉路27號
T：06-2052966 F：06-2055883
高雄分公司：高雄市三民區民族一路560巷27號
T：07-3868066 F：07-3906650

宜蘭辦事處：宜蘭市農權路11號
T：039-324607 F：039-323213
花蓮辦事處：花蓮市民德四街53號
T：038-350323 F：038-350851
嘉義辦事處：嘉義縣水上鄉大堀尾50-20號
T：05-2686656 F：05-2686676
中壢廠：桃園市中壢區中壢工業區合定路18號
T：03-4522088 F：03-4525821
中壢二廠：桃園市中壢區中正路四段320號
T：03-4988609 F：03-4985947
上海廠：上海市松江區葉榭鎮車亭公路1296號
T：002-86-21-57801515~1517
F：002-86-21-57801518