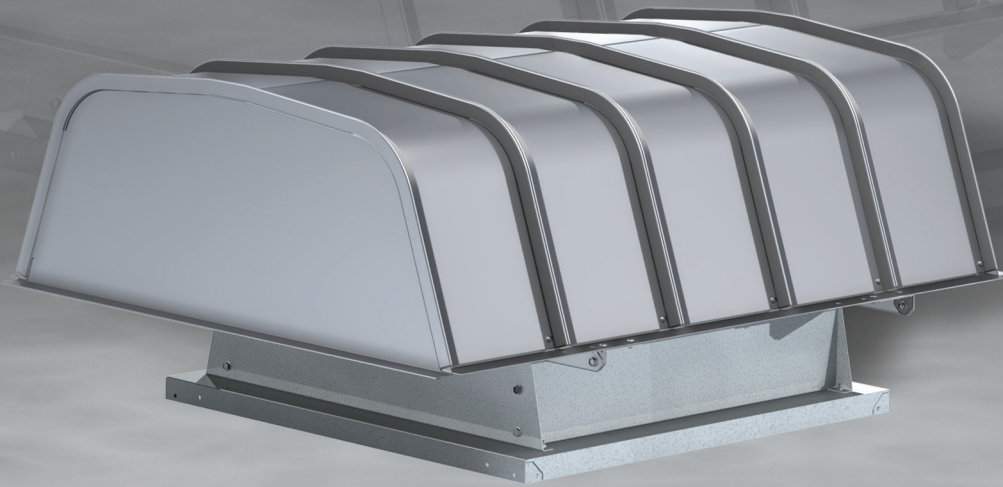


Centrifugal Roof Exhaust Fans Model LB

Low Silhouette Belt Drive



BUILDING VALUE IN AIR.



July
2023

Model LB is a belt drive, fabra hood-style fan, designed for roof mounting in clean air exhaust applications, where height and aesthetics are a concern. The units feature a backward-inclined wheel, with a low silhouette housing.

SIZES

- Belt drive sizes from 7 - 33

PERFORMANCE

- Up to 37,500 cfm
- Up to 2.125 in. wg of static pressure

BENEFITS

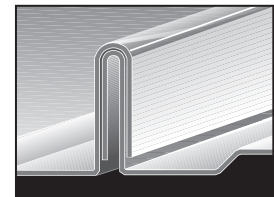
- Quick motor and drive access
- Excellent weather resistance
- Certified for severe duty applications

TYPICAL INSTALLATION

- Educational Facilities
- Warehouses
- Office Buildings
- Shopping Centers

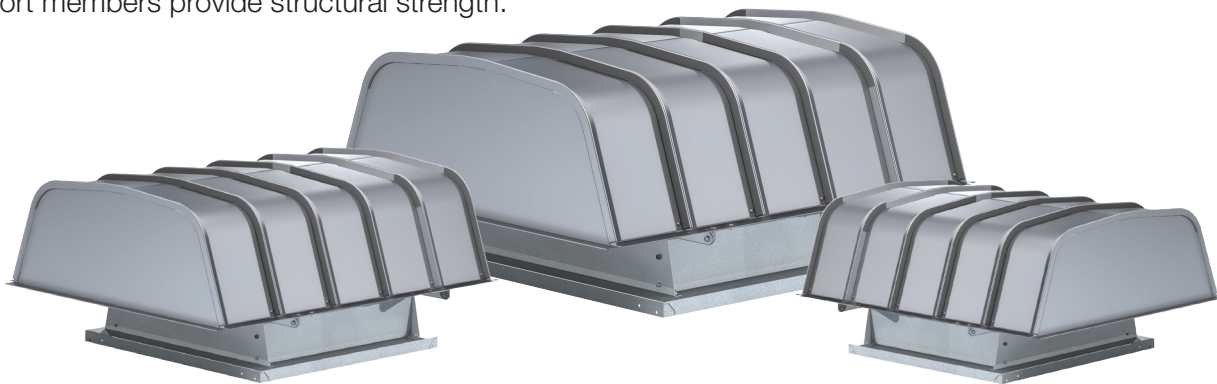
- **Hinged Hood** - All sizes feature a hood which may be hinged to provide quick access to the motor and drive assembly. Access may be gained by simply removing two of the four hood fasteners or all fasteners for complete removal.
- **Large Interior Dimensions** - All sizes allow complete accessibility. Interior dimensions offer clearance for inspection, cleaning, or maintenance of the motor, wheel, belt(s), and drives.
- **Strength & Weather Resistance** - The hood is designed with arched panels manufactured of heavy-gauge, precision roll formed steel with interlocking edges. Each interlocking rib creates a tight, weather-resistant seal. Heavy-gauge steel support members provide structural strength.

- Greenheck's interlocking rib design combines four material thicknesses with I-beam design principles producing a hood far superior in strength to conventional designs (an important feature in high wind and snow load regions).



Formed channels adjacent to the ribs provide water drainage to ensure weather tightness.

Hoods are available in galvanized steel, coated steel, or aluminum construction.



PRODUCT CERTIFICATIONS

Greenheck takes pride in offering a high-quality, reliable product. We invest our resources into designing, testing and manufacturing products to ensure customer satisfaction.



UL/cUL 705
Listed for Electrical
File no. E40001

UL electrical is optional and must be specified



Greenheck Fan Corporation certifies the model LB shown herein are licensed to bear the AMCA seal. The ratings shown are based on tests and procedures performed in accordance with AMCA Publication 211 and AMCA Publication 311 and comply with the requirements of the AMCA Certified Ratings Program.



MODEL LB



Housing Construction

A rib-lock galvanized fabra hood style housing. Hood panels are interlocked and attached to sturdy galvanized rails. (Aluminum hood panels are optional.)

Hinged Access

The entire hood assembly can be hinged open for access to the internal fan components.

Drive Frame

Constructed from heavy-gauge galvanized steel.

Motor

All motors are carefully matched to the fan load to provide years of trouble-free operation.

Wheel

An aluminum, backward inclined, non-overloading, centrifugal wheel is utilized to deliver maximum efficiency. Each wheel is statically and dynamically balanced.

Fan Shaft

Fan shafts are precisely sized, ground and polished so the first critical speed is at least 25 percent over the maximum operating speed. Close tolerances where the shaft makes contact with bearings result in longer bearing life.

Bearings

100 percent factory-tested bearings are designed specifically for air handling applications with a minimum L10 life in excess of 100,000 hours (L50 average life in excess of 500,000 hours).

Drive Assembly

Drives are sized for a minimum of 150 percent of driven horsepower. Machined cast iron pulleys are factory set to the required RPM and adjustable for final system balancing. Belts are static free and oil resistant. Belt adjustment is accomplished by loosening fasteners, sliding the motor plate and retightening fasteners.

Curb Cap

Curb cap has prepunched mounting holes to ensure correct attachment to the curb.

Vibration Isolators

Support the drive assembly and wheel without steel to steel contact providing long life and quiet operation.

Birdscreen

Galvanized rigid wire protects the fan's discharge from birds or small objects. (Aluminum birdscreen is optional).

Windband

Lower windband assembly ensures weathertight and rigid unit construction.

Disconnect Switch

A NEMA-1 disconnect switch is provided as standard. All wiring and electrical components comply with the National Electric Codes and materials are UL Listed. Other NEMA enclosure disconnect switches are optional.

Conduit Chase

A large diameter conduit for installing electrical wiring through the curb cap into the motor compartment. (Not shown)

Birdscreen

Galvanized mesh is standard. Optional aluminum or stainless steel rigid wire are also available.

Hood Insulation

Hood insulation is dual-density to minimize condensation, reduce thermal transfer, and enhance sound absorption at high and low frequencies.

Lifting Lugs

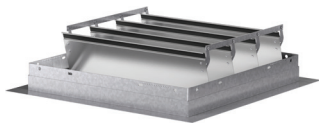
Four heavy-gauge steel brackets are available to provide lifting points when raising the fan to the roof.

Tie-Down Points

Four heavy-gauge steel brackets are available to secure the fan in heavy wind applications. Cables and anchors by others.

Dampers

Designed to prevent outside air from entering back into the building when fan is off. Options include gravity and motorized dampers. Damper sizes are shown on each performance data page.



Curb Seal

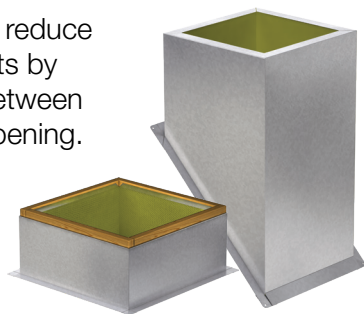
Rubber seal between fan and curb to ensure proper sealing when attached to a curb.

Disconnect Switches

A wide selection of NEMA rated switches are available for positive electrical shutoff and safety, including: dust-tight, rainproof, and corrosion-resistant. Switches may be internally or externally mounted.

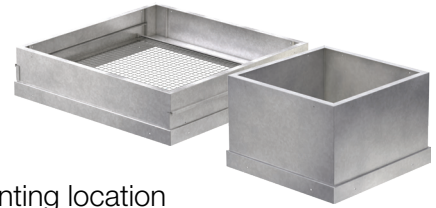
Roof Curbs

Prefabricated roof curbs reduce installation time and costs by ensuring compatibility between the fan, curb and roof opening. All curbs are insulated with fiberglass. A wide variety of roof curbs are available including flanged, pitched and sound-absorbing.



Curb Extensions

Extensions raise the fan discharge above the roof line and provide an accessible mounting location for dampers. Insect screen bases constructed with a removable fine mesh are recommended for applications where insect entry must be prevented.



Motor Starters

The fundamental function of a motor starter is to protect the motor from damage that can occur from overheating. With a Greenheck motor starter, you will be provided with the best motor protection available.

Specific model components may include: physical interface, overload protection, disconnect, magnetic contactor, NEMA-1 or NEMA-3R steel enclosures and pre-engineered easy system integration. For complete information on specific Greenheck Motor Starter models refer to greenheck.com, Products, Motor Starter page.



Coatings

A wide variety of coatings and colors are available. Greenheck coatings and resistance charts can be found in the Performance Coatings Commercial and Industrial Fans color chart and in our Coatings Application Guide.



Permatector™ is our standard coating. Typically used for applications that require corrosion resistance in indoor and outdoor environments. Color is RAL 7023 concrete grey.



Hi-Pro Polyester is resistant to salt water, chemical fumes and moisture in more corrosive atmospheres. It has superior chemical resistance, excellent abrasion and outdoor UV protection. This coating has protective qualities that exceed Air Dry Hersite. Color RAL 7023 concrete grey is standard; choose from seven standard decorative colors or color match any color.





MODEL NUMBER CODE

The model number system is designed to completely identify the fan. The correct code letters must be specified to designate belt drive. The remainder of the model number is determined by the size and performance.

Model Configuration
Fabra Hood Belt Drive

Fan Size
14 through 54

LB - 30 - 7

Motor hp

| | | |
|---------|------------|------------|
| 6 = 1/6 | 10 = 1 | 50 = 5 |
| 4 = 1/4 | 15 = 1-1/2 | 75 = 7-1/2 |
| 3 = 1/3 | 20 = 2 | 100 = 10 |
| 5 = 1/2 | 30 = 3 | 150 = 15 |
| 7 = 3/4 | | |

TYPICAL INSTALLATION

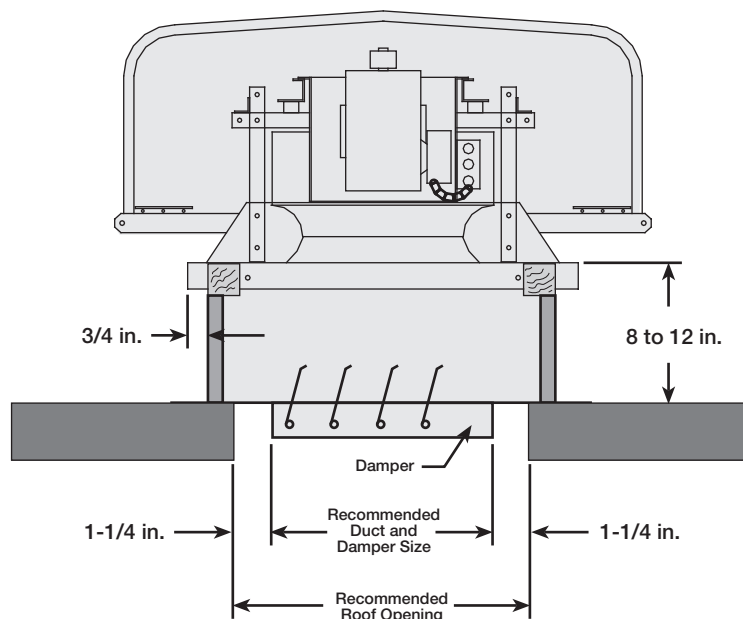
Model LB exhaust fans are designed to meet the needs of general clean air applications. Tests have been conducted to ensure safe and reliable fans capable of withstanding normal exhaust conditions.

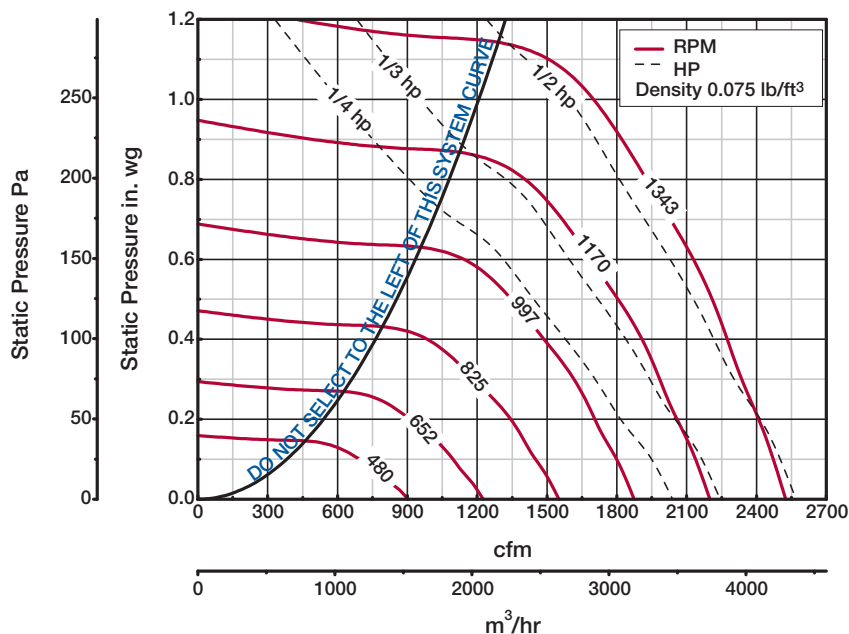
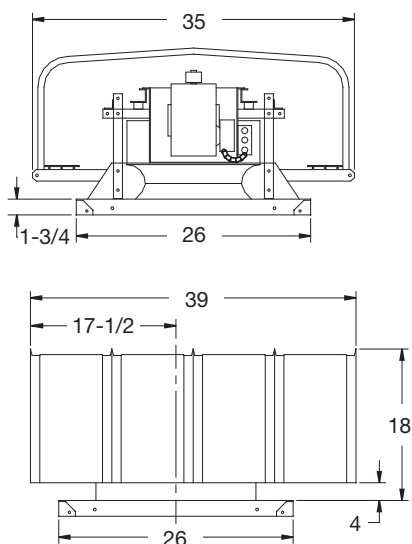
When roofing materials extend to the top of the curb, roof curbs should be 1-1/2 in. (3/4 in. on a side) less than the unit curb cap to allow for roofing and flashing.

For recommended duct size, damper size, and roof opening dimensions, refer to CAPS® or the performance data pages.

Installation must include a means for inspecting, cleaning, and servicing the exhaust fan.

Due to the varying airstreams encountered in commercial ventilation, system designers must be aware of national, state, and local codes and guidelines governing these installations. Local code authorities should be consulted before proceeding with any ventilation project.



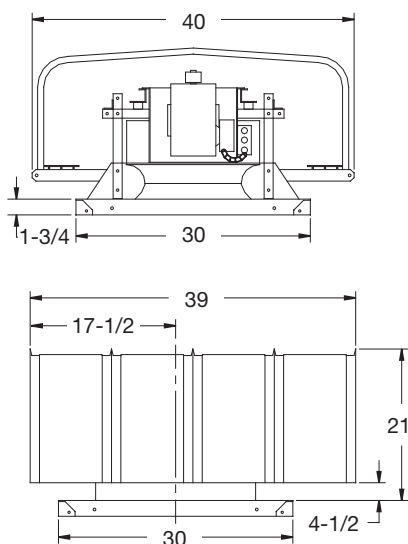


Hood Thickness = 22 ga
Curb Cap Thickness = 0.064
Damper Size = 16 x 16
Roof Opening = 18-1/2 x 18-1/2
Approximate Fan Weight* = 81

All dimensions in inches and weight is shown in pounds.
*Weight shown is the largest cataloged open drip proof motor.

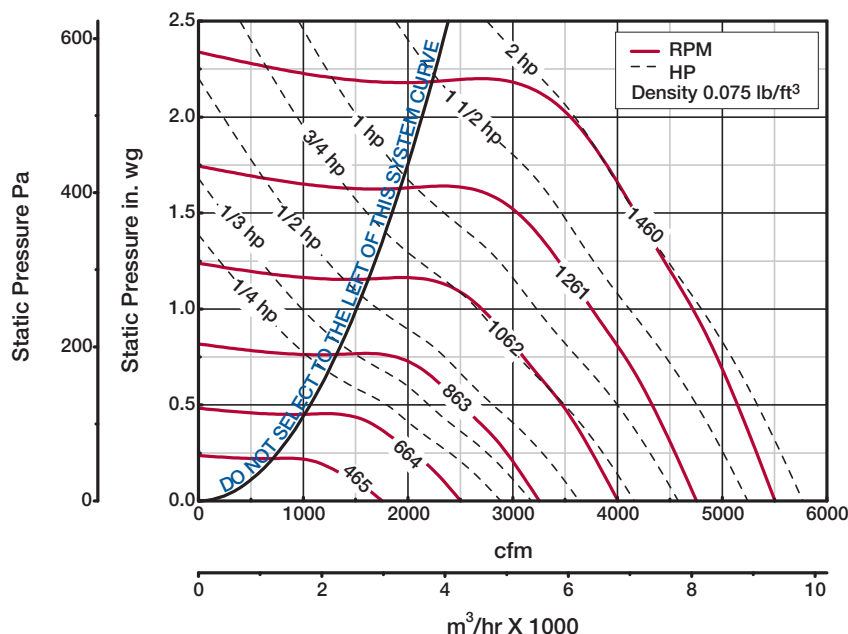
| Model Number | Motor HP | Fan RPM | | CFM / Static Pressure in Inches wg | | | | | | | | | |
|--------------|----------|---------|-------|------------------------------------|-------|-------|-------|------|-------|------|-------|------|-------|
| | | | | 0 | 0.125 | 0.25 | 0.375 | 0.5 | 0.625 | 0.75 | 0.875 | 1 | 1.125 |
| LB-14-4 | 1/4 | 480 | CFM | 903 | 614 | | | | | | | | |
| | | | BHP | 0.022 | 0.025 | | | | | | | | |
| | | | Sones | 4.1 | 3.2 | | | | | | | | |
| | | 564 | CFM | 1061 | 848 | | | | | | | | |
| | | | BHP | 0.035 | 0.041 | | | | | | | | |
| | | | Sones | 4.7 | 4.2 | | | | | | | | |
| | | 731 | CFM | 1375 | 1231 | 1024 | | | | | | | |
| | | | BHP | 0.077 | 0.086 | 0.089 | | | | | | | |
| | | | Sones | 5.9 | 5.6 | 5.1 | | | | | | | |
| | | 815 | CFM | 1533 | 1402 | 1241 | 1013 | | | | | | |
| | | | BHP | 0.11 | 0.12 | 0.12 | 0.12 | | | | | | |
| | | | Sones | 6.7 | 6.4 | 5.9 | 5.4 | | | | | | |
| LB-14-3 | 1/3 | 899 | CFM | 1690 | 1574 | 1439 | 1264 | 946 | | | | | |
| | | | BHP | 0.14 | 0.15 | 0.16 | 0.17 | 0.15 | | | | | |
| | | | Sones | 7.5 | 7.3 | 6.9 | 6.4 | 5.7 | | | | | |
| | | 982 | CFM | 1847 | 1743 | 1629 | 1482 | 1297 | | | | | |
| | | | BHP | 0.19 | 0.2 | 0.21 | 0.21 | 0.21 | | | | | |
| | | | Sones | 8.5 | 8.4 | 8 | 7.5 | 7 | | | | | |
| | | 1066 | CFM | 2004 | 1912 | 1807 | 1681 | 1534 | 1351 | | | | |
| | | | BHP | 0.24 | 0.25 | 0.26 | 0.27 | 0.28 | 0.27 | | | | |
| | | | Sones | 9.8 | 9.7 | 9.4 | 8.9 | 8.4 | 7.8 | | | | |
| | | 1118 | CFM | 2102 | 2016 | 1913 | 1801 | 1672 | 1512 | 1257 | | | |
| | | | BHP | 0.27 | 0.28 | 0.3 | 0.31 | 0.32 | 0.32 | 0.3 | | | |
| | | | Sones | 10.7 | 10.6 | 10.3 | 9.8 | 9.3 | 8.7 | 8.1 | | | |
| LB-14-5 | 1/2 | 1170 | CFM | 2200 | 2120 | 2019 | 1920 | 1797 | 1657 | 1487 | | | |
| | | | BHP | 0.31 | 0.32 | 0.34 | 0.36 | 0.36 | 0.36 | 0.36 | | | |
| | | | Sones | 11.5 | 11.3 | 11.1 | 10.6 | 10.1 | 9.5 | 9.0 | | | |
| | | 1257 | CFM | 2364 | 2290 | 2197 | 2112 | 2002 | 1887 | 1748 | 1585 | | |
| | | | BHP | 0.39 | 0.4 | 0.42 | 0.44 | 0.44 | 0.45 | 0.45 | 0.44 | | |
| | | | Sones | 12.9 | 12.7 | 12.5 | 12.1 | 11.6 | 11.1 | 10.5 | 10.1 | | |
| | | 1343 | CFM | 2525 | 2456 | 2372 | 2289 | 2199 | 2092 | 1979 | 1848 | 1692 | 1386 |
| | | | BHP | 0.47 | 0.49 | 0.51 | 0.53 | 0.54 | 0.55 | 0.55 | 0.55 | 0.54 | 0.51 |
| | | | Sones | 14.4 | 14.1 | 13.8 | 13.5 | 13.1 | 12.6 | 12.2 | 11.6 | 11.1 | 10.4 |

Performance certified is for installation type A: free inlet, free outlet. Power rating (BHP) does not include transmission losses. Performance ratings include the effects of a birdscreen in the airstream. The sound ratings shown are loudness values in fan sones at 5 feet (1.5 m) in a hemispherical free field calculated per AMCA Standard 301. Values shown are for installation type A: free inlet hemispherical sones.



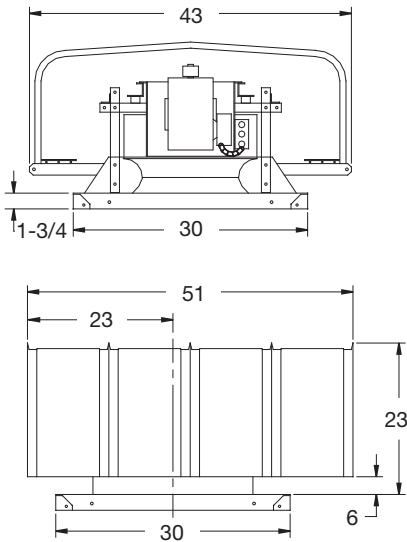
Hood Thickness = 22 ga
Curb Cap Thickness = 0.064
Damper Size = 18 x 18
Roof Opening = 20-1/2 x 20-1/2
Approximate Fan Weight* = 135

All dimensions in inches and weight is shown in pounds.
*Weight shown is the largest cataloged open drip proof motor.



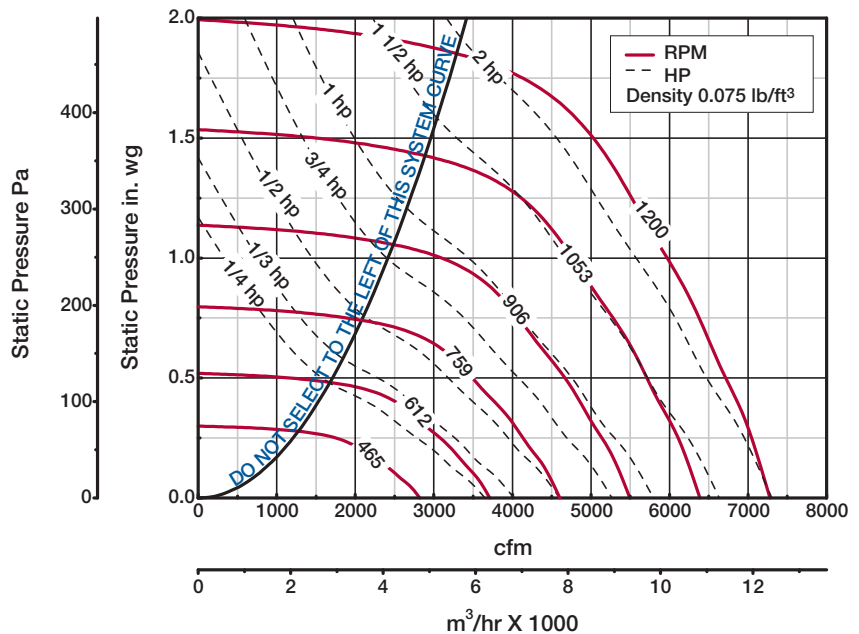
| Model Number | Motor HP | Fan RPM | | CFM / Static Pressure in Inches wg | | | | | | | | | |
|--------------|----------|---------|-------|------------------------------------|-------|-------|------|------|------|------|------|------|------|
| | | | | 0 | 0.125 | 0.25 | 0.5 | 0.75 | 1 | 1.25 | 1.5 | 1.75 | 2 |
| LB-18-4 | 1/4 | 465 | CFM | 1753 | 1422 | | | | | | | | |
| | | | BHP | 0.056 | 0.064 | | | | | | | | |
| | | | Sones | 3.6 | 2.7 | | | | | | | | |
| | | 562 | CFM | 2119 | 1871 | 1522 | | | | | | | |
| | | | BHP | 0.099 | 0.108 | 0.114 | | | | | | | |
| | | | Sones | 4.9 | 4.1 | 3.4 | | | | | | | |
| | | 755 | CFM | 2847 | 2671 | 2474 | 1925 | | | | | | |
| | | | BHP | 0.24 | 0.25 | 0.27 | 0.27 | | | | | | |
| | | | Sones | 8.7 | 7.9 | 7.4 | 6.5 | | | | | | |
| LB-18-3 | 1/3 | 826 | CFM | 3115 | 2957 | 2778 | 2324 | | | | | | |
| | | | BHP | 0.31 | 0.33 | 0.34 | 0.36 | | | | | | |
| | | | Sones | 10.2 | 9.5 | 8.9 | 8.0 | | | | | | |
| LB-18-5 | 1/2 | 888 | CFM | 3348 | 3203 | 3039 | 2638 | 2110 | | | | | |
| | | | BHP | 0.39 | 0.4 | 0.42 | 0.45 | 0.44 | | | | | |
| | | | Sones | 11.7 | 11.0 | 10.4 | 9.4 | 8.7 | | | | | |
| | | 949 | CFM | 3578 | 3442 | 3292 | 2936 | 2498 | | | | | |
| | | | BHP | 0.48 | 0.49 | 0.51 | 0.54 | 0.55 | | | | | |
| | | | Sones | 13.4 | 13.0 | 12.0 | 11.0 | 10.3 | | | | | |
| LB-18-7 | 3/4 | 1085 | CFM | 4091 | 3972 | 3847 | 3575 | 3218 | 2822 | | | | |
| | | | BHP | 0.71 | 0.73 | 0.75 | 0.79 | 0.82 | 0.82 | | | | |
| | | | Sones | 16.8 | 16.2 | 15.5 | 14.6 | 13.4 | 12.9 | | | | |
| LB-18-10 | 1 | 1141 | CFM | 4302 | 4189 | 4073 | 3814 | 3493 | 3140 | 2674 | | | |
| | | | BHP | 0.83 | 0.84 | 0.86 | 0.91 | 0.94 | 0.96 | 0.93 | | | |
| | | | Sones | 18.0 | 17.3 | 16.7 | 15.9 | 14.8 | 14.1 | 13.8 | | | |
| LB-18-15 | 1-1/2 | 1286 | CFM | 4849 | 4749 | 4648 | 4423 | 4183 | 3880 | 3568 | 3208 | | |
| | | | BHP | 1.19 | 1.2 | 1.22 | 1.27 | 1.32 | 1.35 | 1.37 | 1.35 | | |
| | | | Sones | 21 | 20 | 19.8 | 19.2 | 18.5 | 17.8 | 17.4 | 17.1 | | |
| | | 1375 | CFM | 5185 | 5091 | 4997 | 4790 | 4576 | 4311 | 4025 | 3719 | 3382 | |
| | | | BHP | 1.45 | 1.47 | 1.49 | 1.54 | 1.59 | 1.63 | 1.66 | 1.67 | 1.65 | |
| | | | Sones | 24 | 23 | 22 | 21 | 20 | 19.9 | 19.6 | 19.5 | | |
| LB-18-20 | 2 | 1460 | CFM | 5505 | 5417 | 5328 | 5138 | 4936 | 4714 | 4446 | 4176 | 3874 | 3538 |
| | | | BHP | 1.73 | 1.76 | 1.78 | 1.83 | 1.88 | 1.93 | 1.98 | 2 | 2 | 1.97 |
| | | | Sones | 26 | 25 | 24 | 23 | 23 | 22 | 22 | 22 | 22 | 22 |

Performance certified is for installation type A: free inlet, free outlet. Power rating (BHP) does not include transmission losses. Performance ratings include the effects of a birdscreen in the airstream. The sound ratings shown are loudness values in fan sones at 5 feet (1.5 m) in a hemispherical free field calculated per AMCA Standard 301. Values shown are for installation type A: free inlet hemispherical sones.



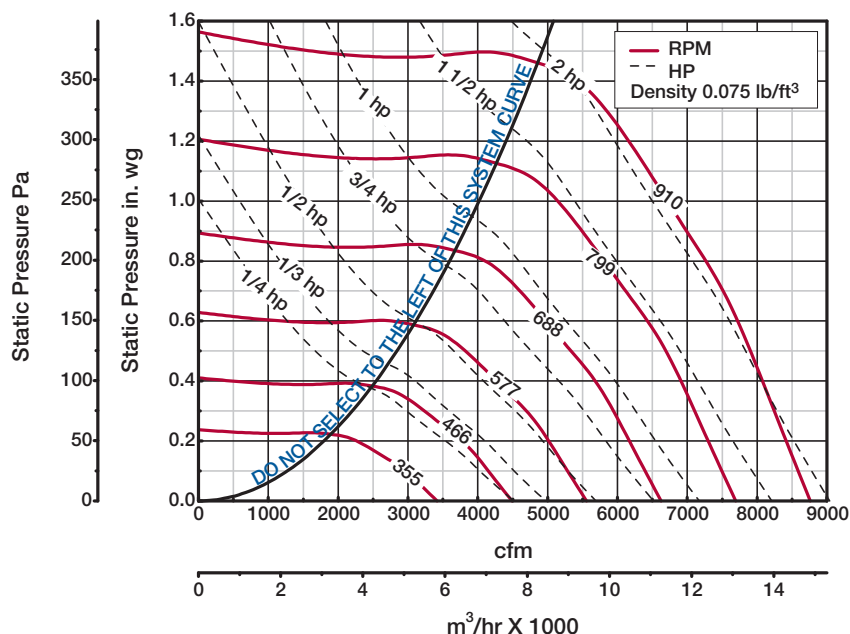
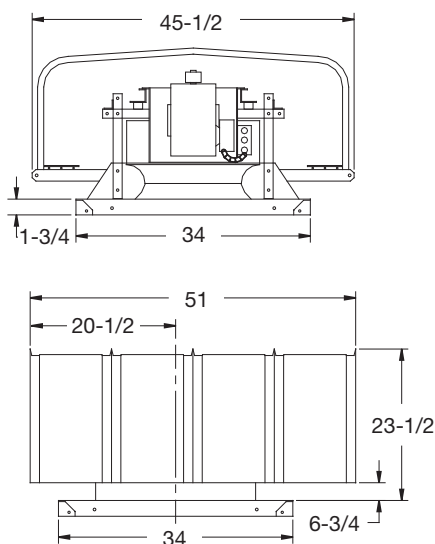
Hood Thickness = 22 ga
Curb Cap Thickness = 0.064
Damper Size = 18 x 18
Roof Opening = 20-1/2 x 20-1/2
Approximate Fan Weight* = 145

All dimensions in inches and weight is shown in pounds.
*Weight shown is the largest cataloged open drip proof motor.



| Model Number | Motor HP | Fan RPM | | CFM / Static Pressure in Inches wg | | | | | | | | | |
|--------------|----------|---------|-------|------------------------------------|------|-------|------|-------|------|------|------|------|------|
| | | | | 0 | 0.25 | 0.375 | 0.5 | 0.625 | 0.75 | 1 | 1.25 | 1.5 | 1.75 |
| LB-21-4 | 1/4 | 465 | CFM | 2820 | 1732 | | | | | | | | |
| | | | BHP | 0.12 | 0.13 | | | | | | | | |
| | | | Sones | 6.6 | 5.2 | | | | | | | | |
| | | 595 | CFM | 3609 | 2938 | 2457 | | | | | | | |
| | | | BHP | 0.24 | 0.28 | 0.28 | | | | | | | |
| | | | Sones | 8.8 | 7.8 | 6.9 | | | | | | | |
| LB-21-3 | 1/3 | 651 | CFM | 3948 | 3371 | 2970 | 2354 | | | | | | |
| | | | BHP | 0.32 | 0.36 | 0.36 | 0.34 | | | | | | |
| | | | Sones | 10.1 | 8.8 | 8.2 | 6.9 | | | | | | |
| LB-21-5 | 1/2 | 699 | CFM | 4239 | 3724 | 3362 | 2954 | 1964 | | | | | |
| | | | BHP | 0.39 | 0.44 | 0.45 | 0.45 | 0.38 | | | | | |
| | | | Sones | 11.6 | 9.9 | 9.3 | 8.6 | 7.1 | | | | | |
| | | 747 | CFM | 4531 | 4056 | 3741 | 3390 | 2909 | | | | | |
| | | | BHP | 0.48 | 0.53 | 0.54 | 0.55 | 0.53 | | | | | |
| | | | Sones | 13.4 | 11.2 | 10.4 | 9.8 | 9.1 | | | | | |
| LB-21-7 | 3/4 | 801 | CFM | 4858 | 4424 | 4157 | 3833 | 3491 | 2937 | | | | |
| | | | BHP | 0.59 | 0.65 | 0.66 | 0.67 | 0.68 | 0.64 | | | | |
| | | | Sones | 15.5 | 12.9 | 11.8 | 11.3 | 10.8 | 10.1 | | | | |
| | | 855 | CFM | 5186 | 4790 | 4553 | 4261 | 3954 | 3608 | | | | |
| | | | BHP | 0.72 | 0.79 | 0.8 | 0.81 | 0.82 | 0.82 | | | | |
| | | | Sones | 16.7 | 14.4 | 13.3 | 12.8 | 12.1 | 11.5 | | | | |
| LB-21-10 | 1 | 899 | CFM | 5452 | 5087 | 4858 | 4602 | 4313 | 4019 | 2894 | | | |
| | | | BHP | 0.83 | 0.91 | 0.93 | 0.94 | 0.95 | 0.96 | 0.86 | | | |
| | | | Sones | 17.1 | 15.4 | 14.5 | 13.9 | 13.4 | 12.7 | 11.7 | | | |
| LB-21-15 | 1 1/2 | 1010 | CFM | 6126 | 5826 | 5614 | 5415 | 5183 | 4926 | 4386 | 3369 | | |
| | | | BHP | 1.18 | 1.26 | 1.3 | 1.32 | 1.34 | 1.35 | 1.36 | 1.24 | | |
| | | | Sones | 20 | 18.9 | 18.1 | 17.3 | 16.6 | 16.2 | 15.0 | 14.0 | | |
| | | 1077 | CFM | 6532 | 6260 | 6068 | 5877 | 5691 | 5451 | 4965 | 4395 | | |
| | | | BHP | 1.43 | 1.52 | 1.56 | 1.59 | 1.61 | 1.62 | 1.65 | 1.63 | | |
| | | | Sones | 22 | 21 | 20 | 19.4 | 18.8 | 18.2 | 17.3 | 16.4 | | |
| LB-21-20 | 2 | 1200 | CFM | 7278 | 7034 | 6890 | 6712 | 6542 | 6375 | 5954 | 5517 | 5013 | 4122 |
| | | | BHP | 1.98 | 2.07 | 2.12 | 2.18 | 2.2 | 2.22 | 2.25 | 2.28 | 2.26 | 2.11 |
| | | | Sones | 26 | 25 | 25 | 24 | 23 | 23 | 22 | 21 | 20 | 18.5 |

Performance certified is for installation type A: free inlet, free outlet. Power rating (BHP) does not include transmission losses. Performance ratings include the effects of a birdscreen in the airstream. The sound ratings shown are loudness values in fan sones at 5 feet (1.5 m) in a hemispherical free field calculated per AMCA Standard 301. Values shown are for installation type A: free inlet hemispherical sones.

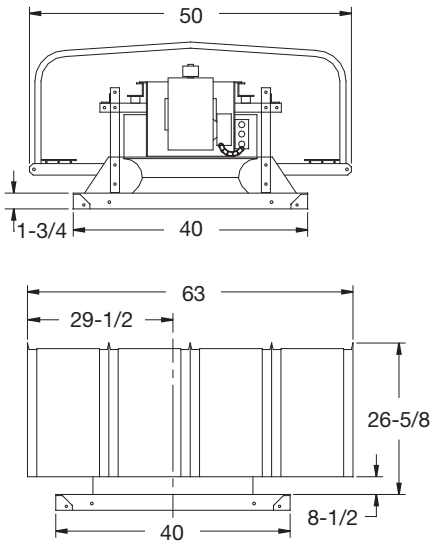


Hood Thickness = 22 ga
 Curb Cap Thickness = 0.064
 Damper Size = 24 x 24
 Roof Opening = 26-1/2 x 26-1/2
 Approximate Fan Weight* = 188

All dimensions in inches and weight is shown in pounds.
 *Weight shown is the largest cataloged open drip proof motor.

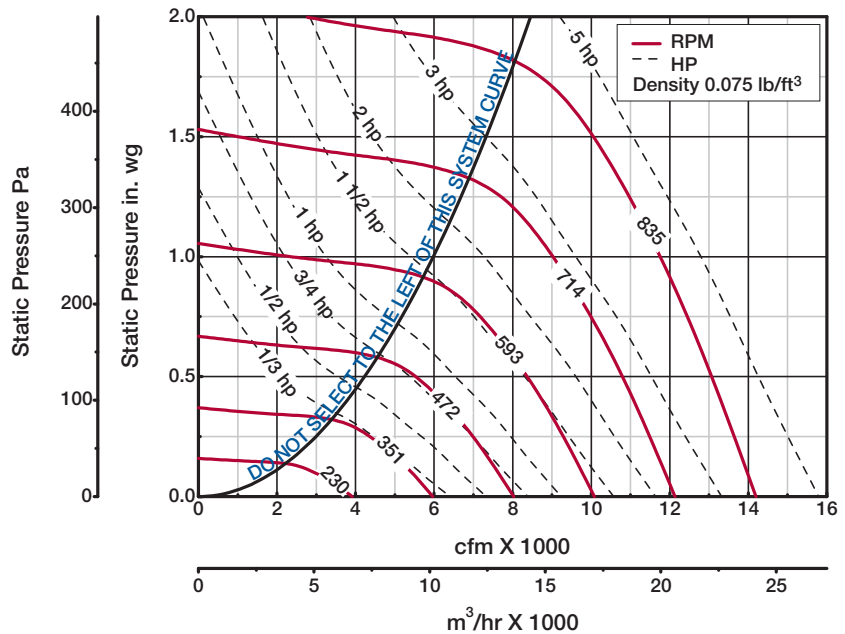
| Model Number | Motor HP | Fan RPM | | CFM / Static Pressure in Inches wg | | | | | | | | | |
|--------------|----------|---------|-------|------------------------------------|------|-------|------|-------|------|-------|------|------|-------|
| | | | | 0 | 0.25 | 0.375 | 0.5 | 0.625 | 0.75 | 0.875 | 1 | 1.25 | 1.375 |
| LB-24-4 | 1/4 | 355 | CFM | 3419 | | | | | | | | | |
| | | | BHP | 0.11 | | | | | | | | | |
| | | | Sones | 5.8 | | | | | | | | | |
| | | 409 | CFM | 3938 | 2715 | | | | | | | | |
| | | | BHP | 0.17 | 0.19 | | | | | | | | |
| | | | Sones | 6.3 | 5.1 | | | | | | | | |
| | | 462 | CFM | 4449 | 3451 | 2491 | | | | | | | |
| | | | BHP | 0.24 | 0.28 | 0.25 | | | | | | | |
| | | | Sones | 7.4 | 6.3 | 5.3 | | | | | | | |
| LB-24-3 | 1/3 | 508 | CFM | 4892 | 4043 | 3433 | | | | | | | |
| | | | BHP | 0.32 | 0.36 | 0.36 | | | | | | | |
| | | | Sones | 8.5 | 7.4 | 6.8 | | | | | | | |
| LB-24-5 | 1/2 | 582 | CFM | 5604 | 4917 | 4441 | 3899 | | | | | | |
| | | | BHP | 0.48 | 0.54 | 0.55 | 0.55 | | | | | | |
| | | | Sones | 10.7 | 9.4 | 8.9 | 8.4 | | | | | | |
| LB-24-7 | 3/4 | 625 | CFM | 6018 | 5381 | 4988 | 4497 | 3929 | | | | | |
| | | | BHP | 0.59 | 0.66 | 0.68 | 0.68 | 0.66 | | | | | |
| | | | Sones | 12.4 | 11.0 | 10.3 | 10.0 | 9.5 | | | | | |
| | | 667 | CFM | 6423 | 5828 | 5505 | 5062 | 4589 | 3984 | | | | |
| | | | BHP | 0.72 | 0.8 | 0.82 | 0.83 | 0.83 | 0.79 | | | | |
| | | | Sones | 14.1 | 12.7 | 12.0 | 11.5 | 11.1 | 10.9 | | | | |
| LB-24-10 | 1 | 734 | CFM | 7068 | 6531 | 6252 | 5912 | 5503 | 5073 | 4555 | | | |
| | | | BHP | 0.96 | 1.05 | 1.08 | 1.1 | 1.1 | 1.1 | 1.07 | | | |
| | | | Sones | 17.0 | 15.3 | 14.6 | 13.9 | 13.5 | 13.2 | 12.9 | | | |
| LB-24-15 | 1 1/2 | 787 | CFM | 7578 | 7080 | 6820 | 6560 | 6190 | 5799 | 5398 | 4909 | | |
| | | | BHP | 1.18 | 1.29 | 1.32 | 1.35 | 1.36 | 1.36 | 1.36 | 1.32 | | |
| | | | Sones | 19.6 | 17.4 | 16.5 | 15.9 | 15.4 | 15.0 | 14.8 | 14.1 | | |
| LB-24-20 | 2 | 868 | CFM | 8358 | 7907 | 7675 | 7440 | 7192 | 6855 | 6505 | 6141 | 5285 | |
| | | | BHP | 1.58 | 1.7 | 1.74 | 1.78 | 1.81 | 1.82 | 1.83 | 1.82 | 1.76 | |
| | | | Sones | 24 | 21 | 20 | 19.4 | 18.9 | 18.3 | 17.9 | 17.6 | 16.0 | |
| | | 910 | CFM | 8763 | 8333 | 8114 | 7889 | 7664 | 7377 | 7056 | 6713 | 5995 | 5537 |
| | | | BHP | 1.82 | 1.95 | 2 | 2.04 | 2.07 | 2.09 | 2.1 | 2.1 | 2.08 | 2.03 |
| | | | Sones | 27 | 24 | 23 | 21 | 21 | 20 | 19.8 | 19.5 | 18.4 | 17.2 |

Performance certified is for installation type A: free inlet, free outlet. Power rating (BHP) does not include transmission losses. Performance ratings include the effects of a birdscreen in the airstream. The sound ratings shown are loudness values in fan sones at 5 feet (1.5 m) in a hemispherical free field calculated per AMCA Standard 301. Values shown are for installation type A: free inlet hemispherical sones.



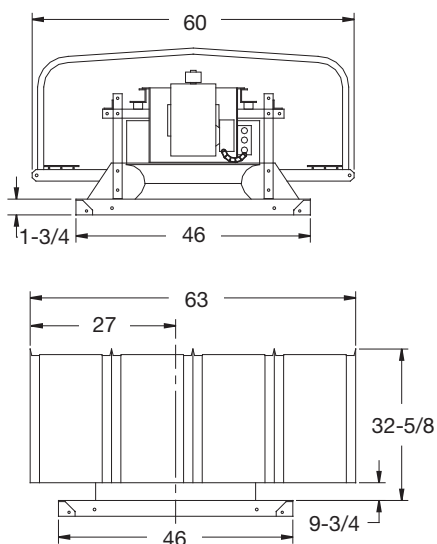
Hood Thickness = 22 ga
Curb Cap Thickness = 0.064
Damper Size = 30 x 30
Roof Opening = 32-1/2 x 32-1/2
Approximate Fan Weight* = 249

All dimensions in inches and weight is shown in pounds.
*Weight shown is the largest cataloged open drip proof motor.



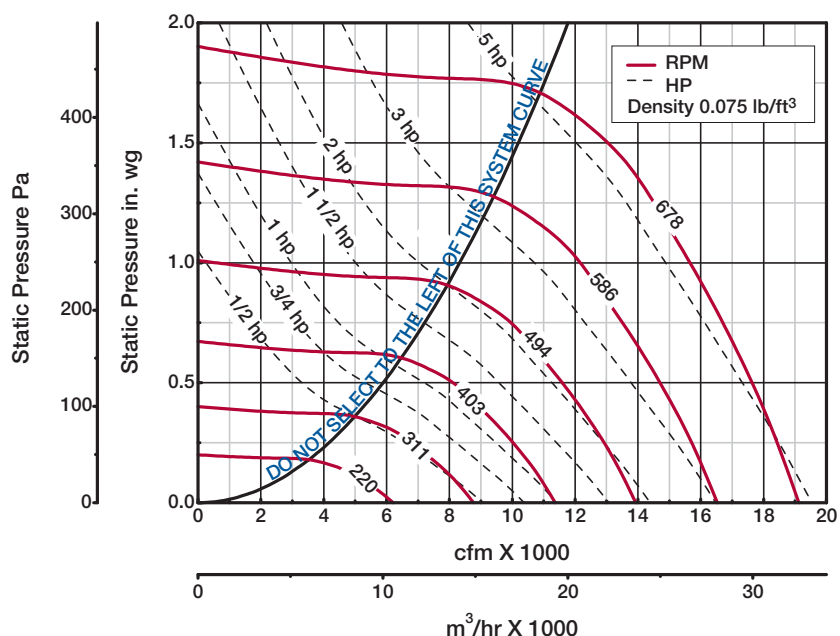
| Model Number | Motor HP | Fan RPM | | CFM / Static Pressure in Inches wg | | | | | | | | | |
|--------------|----------|---------|-------|------------------------------------|-------|-------|-------|-------|-------|-------|-------|------|------|
| | | | | 0 | 0.25 | 0.375 | 0.5 | 0.625 | 0.75 | 1 | 1.25 | 1.5 | 1.75 |
| LB-30-3 | 1/3 | 230 | CFM | 3910 | | | | | | | | | |
| | | | BHP | 0.076 | | | | | | | | | |
| | | | Sones | 8.0 | | | | | | | | | |
| | | 366 | CFM | 6221 | 4729 | | | | | | | | |
| | | | BHP | 0.31 | 0.37 | | | | | | | | |
| | | | Sones | 8.7 | 5.9 | | | | | | | | |
| LB-30-5 | 1/2 | 394 | CFM | 6697 | 5354 | 4290 | | | | | | | |
| | | | BHP | 0.38 | 0.45 | 0.44 | | | | | | | |
| | | | Sones | 9.0 | 6.5 | 6.0 | | | | | | | |
| | | 421 | CFM | 7156 | 5939 | 5076 | | | | | | | |
| | | | BHP | 0.47 | 0.54 | 0.55 | | | | | | | |
| | | | Sones | 9.7 | 7.4 | 6.7 | | | | | | | |
| LB-30-7 | 3/4 | 483 | CFM | 8210 | 7196 | 6567 | 5777 | | | | | | |
| | | | BHP | 0.7 | 0.8 | 0.83 | 0.83 | | | | | | |
| | | | Sones | 12.0 | 10.7 | 9.7 | 8.8 | | | | | | |
| LB-30-10 | 1 | 529 | CFM | 8992 | 8079 | 7559 | 6946 | 6162 | | | | | |
| | | | BHP | 0.92 | 1.04 | 1.07 | 1.1 | 1.09 | | | | | |
| | | | Sones | 13.8 | 12.9 | 12.1 | 11.4 | 10.3 | | | | | |
| LB-30-15 | 1 1/2 | 567 | CFM | 9638 | 8797 | 8334 | 7786 | 7174 | 6410 | | | | |
| | | | BHP | 1.14 | 1.27 | 1.31 | 1.34 | 1.36 | 1.33 | | | | |
| | | | Sones | 15.3 | 14.2 | 13.6 | 13.0 | 12.3 | 11.2 | | | | |
| | | 605 | CFM | 10284 | 9507 | 9073 | 8605 | 8068 | 7434 | | | | |
| | | | BHP | 1.38 | 1.53 | 1.57 | 1.61 | 1.64 | 1.64 | | | | |
| | | | Sones | 16.8 | 15.7 | 15.2 | 14.6 | 14.1 | 13.3 | | | | |
| LB-30-20 | 2 | 667 | CFM | 11338 | 10639 | 10257 | 9863 | 9419 | 8933 | 7737 | | | |
| | | | BHP | 1.85 | 2.02 | 2.07 | 2.12 | 2.16 | 2.19 | 2.17 | | | |
| | | | Sones | 19.8 | 18.6 | 17.9 | 17.5 | 17.1 | 16.6 | 14.9 | | | |
| LB-30-30 | 3 | 703 | CFM | 11950 | 11287 | 10935 | 10562 | 10184 | 9722 | 8701 | 7032 | | |
| | | | BHP | 2.17 | 2.34 | 2.41 | 2.46 | 2.51 | 2.54 | 2.57 | 2.41 | | |
| | | | Sones | 22 | 20 | 19.5 | 19.1 | 18.7 | 18.3 | 17.0 | 14.2 | | |
| LB-30-50 | 5 | 835 | CFM | 14194 | 13635 | 13356 | 13062 | 12747 | 12432 | 11728 | 10951 | 9965 | 8478 |
| | | | BHP | 3.63 | 3.84 | 3.95 | 4.03 | 4.09 | 4.14 | 4.24 | 4.33 | 4.29 | 4.06 |
| | | | Sones | 27 | 26 | 25 | 25 | 24 | 24 | 23 | 22 | 21 | 18.2 |

Performance certified is for installation type A: free inlet, free outlet. Power rating (BHP) does not include transmission losses. Performance ratings include the effects of a birdscreen in the airstream. The sound ratings shown are loudness values in fan sones at 5 feet (1.5 m) in a hemispherical free field calculated per AMCA Standard 301. Values shown are for installation type A: free inlet hemispherical sones.



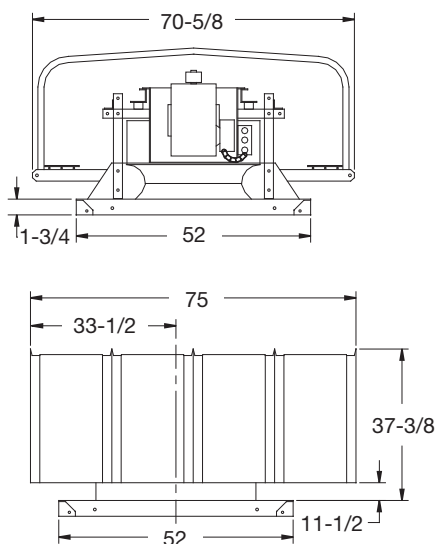
Hood Thickness = 22 ga
Curb Cap Thickness = 0.064
Damper Size = 36 x 36
Roof Opening = 38-1/2 x 38-1/2
Approximate Fan Weight* = 338

All dimensions in inches and weight is shown in pounds.
*Weight shown is the largest cataloged open drip proof motor.



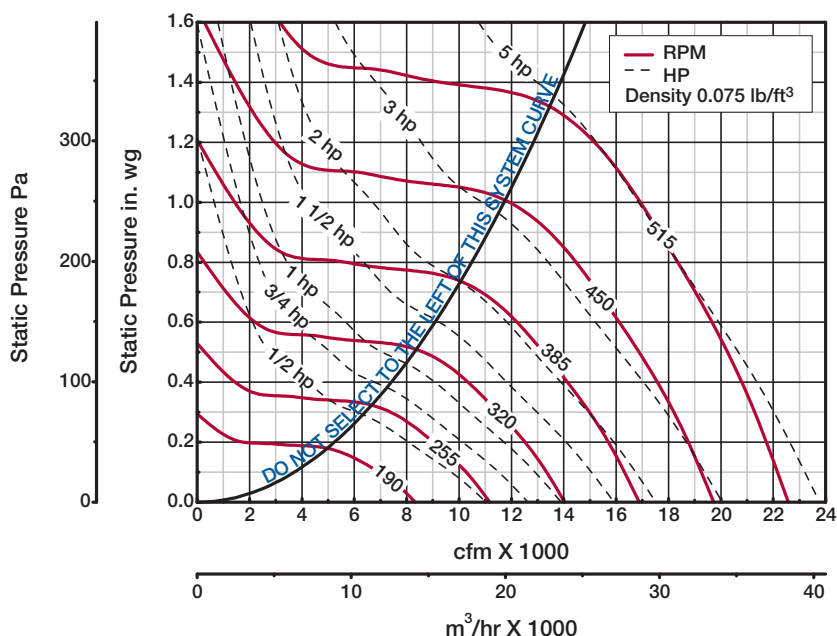
| Model Number | Motor HP | Fan RPM | | CFM / Static Pressure in Inches wg | | | | | | | | | |
|--------------|----------|---------|-------|------------------------------------|-------|-------|-------|-------|-------|-------|-------|-------|-------|
| | | | | 0 | 0.25 | 0.375 | 0.5 | 0.625 | 0.75 | 0.875 | 1 | 1.25 | 1.5 |
| LB-36-5 | 1/2 | 220 | CFM | 6204 | | | | | | | | | |
| | | | BHP | 0.16 | | | | | | | | | |
| | | | Sones | 4.9 | | | | | | | | | |
| | | 315 | CFM | 8884 | 6937 | | | | | | | | |
| | | | BHP | 0.47 | 0.55 | | | | | | | | |
| | | | Sones | 8.2 | 6.3 | | | | | | | | |
| LB-36-7 | 3/4 | 360 | CFM | 10153 | 8570 | 7487 | | | | | | | |
| | | | BHP | 0.7 | 0.81 | 0.83 | | | | | | | |
| | | | Sones | 10.6 | 8.9 | 7.9 | | | | | | | |
| LB-36-10 | 1 | 397 | CFM | 11196 | 9816 | 8911 | 7775 | | | | | | |
| | | | BHP | 0.94 | 1.08 | 1.1 | 1.1 | | | | | | |
| | | | Sones | 13.7 | 12.1 | 10.6 | 9.4 | | | | | | |
| LB-36-15 | 1½ | 426 | CFM | 12014 | 10765 | 9964 | 9056 | 7716 | | | | | |
| | | | BHP | 1.16 | 1.32 | 1.35 | 1.37 | 1.34 | | | | | |
| | | | Sones | 14.8 | 14.0 | 12.7 | 11.6 | 10.1 | | | | | |
| | | 454 | CFM | 12804 | 11668 | 10949 | 10127 | 9209 | 7552 | | | | |
| | | | BHP | 1.41 | 1.58 | 1.63 | 1.65 | 1.66 | 1.57 | | | | |
| | | | Sones | 16.0 | 15.4 | 14.5 | 13.7 | 12.5 | 11.0 | | | | |
| LB-36-20 | 2 | 499 | CFM | 14073 | 13064 | 12442 | 11760 | 11004 | 10173 | 8773 | | | |
| | | | BHP | 1.87 | 2.06 | 2.13 | 2.17 | 2.2 | 2.2 | 2.12 | | | |
| | | | Sones | 18.2 | 17.6 | 17.2 | 16.6 | 16.1 | 15.1 | 13.9 | | | |
| LB-36-30 | 3 | 536 | CFM | 15116 | 14196 | 13646 | 13037 | 12361 | 11652 | 10837 | 9559 | | |
| | | | BHP | 2.31 | 2.52 | 2.61 | 2.67 | 2.7 | 2.73 | 2.72 | 2.65 | | |
| | | | Sones | 20 | 19.7 | 19.3 | 18.7 | 18.4 | 17.8 | 16.7 | 15.8 | | |
| | | 572 | CFM | 16132 | 15287 | 14790 | 14229 | 13649 | 12989 | 12313 | 11534 | | |
| | | | BHP | 2.81 | 3.04 | 3.14 | 3.21 | 3.26 | 3.29 | 3.32 | 3.31 | | |
| | | | Sones | 22 | 22 | 21 | 21 | 20 | 19.9 | 19.0 | 18.1 | | |
| LB-36-50 | 5 | 614 | CFM | 17316 | 16540 | 16087 | 15598 | 15066 | 14504 | 13890 | 13262 | 11584 | |
| | | | BHP | 3.48 | 3.72 | 3.84 | 3.93 | 3.99 | 4.05 | 4.08 | 4.1 | 4.04 | |
| | | | Sones | 25 | 24 | 24 | 24 | 23 | 23 | 22 | 21 | 19.2 | |
| | | 678 | CFM | 19121 | 18419 | 18041 | 17621 | 17165 | 16683 | 16192 | 15636 | 14494 | 12970 |
| | | | BHP | 4.69 | 4.95 | 5.08 | 5.21 | 5.3 | 5.37 | 5.44 | 5.47 | 5.52 | 5.45 |
| | | | Sones | 30 | 29 | 29 | 29 | 28 | 27 | 27 | 26 | 24 | 22 |

Performance certified is for installation type A: free inlet, free outlet. Power rating (BHP) does not include transmission losses. Performance ratings include the effects of a birdscreen in the airstream. The sound ratings shown are loudness values in fan sones at 5 feet (1.5 m) in a hemispherical free field calculated per AMCA Standard 301. Values shown are for installation type A: free inlet hemispherical sones.



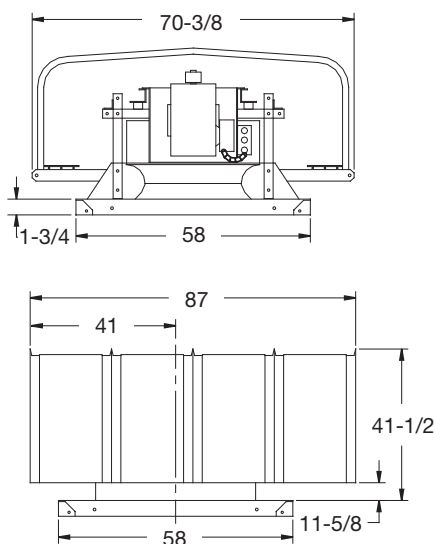
Hood Thickness = 22 ga
Curb Cap Thickness = 0.064
Damper Size = 42 x 42
Roof Opening = 44-1/2 x 44-1/2
Approximate Fan Weight* = 396

All dimensions in inches and weight is shown in pounds.
*Weight shown is the largest cataloged open drip proof motor.



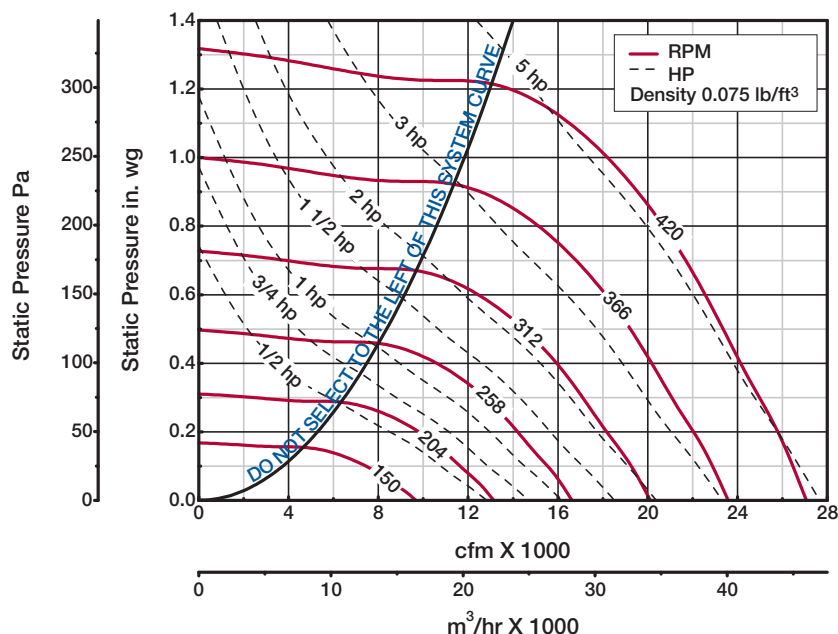
| Model Number | Motor HP | Fan RPM | | CFM / Static Pressure in Inches wg | | | | | | | | | |
|--------------|----------|---------|-------|------------------------------------|-------|-------|-------|-------|-------|-------|-------|-------|-------|
| | | | | 0 | 0.125 | 0.25 | 0.375 | 0.5 | 0.625 | 0.75 | 0.875 | 1 | 1.25 |
| LB-42-5 | 1/2 | 190 | CFM | 8328 | 6455 | | | | | | | | |
| | | | BHP | 0.21 | 0.25 | | | | | | | | |
| | | | Sones | 5.2 | 4.3 | | | | | | | | |
| | | 247 | CFM | 10827 | 9583 | 7772 | | | | | | | |
| | | | BHP | 0.47 | 0.53 | 0.55 | | | | | | | |
| | | | Sones | 6.9 | 6.0 | 5.5 | | | | | | | |
| LB-42-7 | 3/4 | 283 | CFM | 12405 | 11362 | 9965 | 7932 | | | | | | |
| | | | BHP | 0.71 | 0.78 | 0.83 | 0.81 | | | | | | |
| | | | Sones | 8.3 | 7.6 | 7.1 | 6.5 | | | | | | |
| LB-42-10 | 1 | 311 | CFM | 13632 | 12718 | 11521 | 10057 | | | | | | |
| | | | BHP | 0.94 | 1.02 | 1.08 | 1.1 | | | | | | |
| | | | Sones | 9.8 | 9.3 | 8.7 | 8.3 | | | | | | |
| LB-42-15 | 1 1/2 | 334 | CFM | 14640 | 13812 | 12766 | 11480 | 9795 | | | | | |
| | | | BHP | 1.17 | 1.25 | 1.33 | 1.37 | 1.35 | | | | | |
| | | | Sones | 11.5 | 11.0 | 10.4 | 9.8 | 9.2 | | | | | |
| | | 356 | CFM | 15605 | 14828 | 13887 | 12733 | 11417 | 9401 | | | | |
| | | | BHP | 1.41 | 1.5 | 1.58 | 1.64 | 1.66 | 1.59 | | | | |
| | | | Sones | 13.2 | 12.7 | 12.1 | 11.5 | 10.8 | 10.3 | | | | |
| LB-42-20 | 2 | 392 | CFM | 17183 | 16477 | 15667 | 14715 | 13626 | 12382 | 10481 | | | |
| | | | BHP | 1.89 | 1.98 | 2.08 | 2.16 | 2.21 | 2.21 | 2.13 | | | |
| | | | Sones | 16.1 | 15.5 | 14.9 | 14.3 | 13.7 | 13.2 | 12.9 | | | |
| LB-42-30 | 3 | 420 | CFM | 18410 | 17751 | 17030 | 16205 | 15201 | 14135 | 12945 | 11013 | | |
| | | | BHP | 2.32 | 2.42 | 2.52 | 2.62 | 2.68 | 2.72 | 2.72 | 2.61 | | |
| | | | Sones | 18.6 | 18.0 | 17.3 | 16.6 | 16.1 | 15.4 | 15.3 | 15.2 | | |
| | | 448 | CFM | 19637 | 19020 | 18378 | 17605 | 16740 | 15786 | 14735 | 13494 | | |
| | | | BHP | 2.82 | 2.93 | 3.04 | 3.14 | 3.22 | 3.28 | 3.3 | 3.28 | | |
| | | | Sones | 22 | 21 | 20 | 19.4 | 18.8 | 18.1 | 17.5 | 17.6 | | |
| LB-42-50 | 5 | 482 | CFM | 21128 | 20554 | 19980 | 19281 | 18562 | 17683 | 16796 | 15798 | 14692 | |
| | | | BHP | 3.51 | 3.63 | 3.74 | 3.86 | 3.97 | 4.04 | 4.1 | 4.11 | 4.09 | |
| | | | Sones | 23 | 23 | 22 | 22 | 21 | 20 | 19.3 | 18.7 | 18.5 | |
| | | 515 | CFM | 22574 | 22037 | 21500 | 20887 | 20214 | 19480 | 18651 | 17822 | 16871 | 14331 |
| | | | BHP | 4.28 | 4.41 | 4.53 | 4.65 | 4.77 | 4.87 | 4.94 | 5.01 | 5.01 | 4.88 |
| | | | Sones | 25 | 24 | 24 | 24 | 23 | 22 | 21 | 21 | 20 | 19.3 |

Performance certified is for installation type A: free inlet, free outlet. Power rating (BHP) does not include transmission losses. Performance ratings include the effects of a birdscreen in the airstream. The sound ratings shown are loudness values in fan sones at 5 feet (1.5 m) in a hemispherical free field calculated per AMCA Standard 301. Values shown are for installation type A: free inlet hemispherical sones.



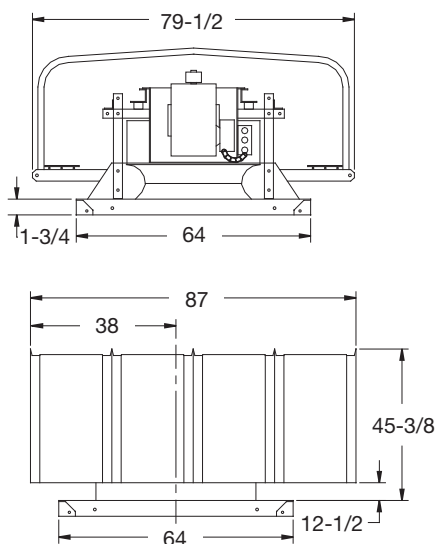
Hood Thickness = 22 ga
Curb Cap Thickness = 0.064
Damper Size = 48 x 48
Roof Opening = 50-1/2 x 50-1/2
Approximate Fan Weight* = 430

All dimensions in inches and weight is shown in pounds.
*Weight shown is the largest cataloged open drip proof motor.



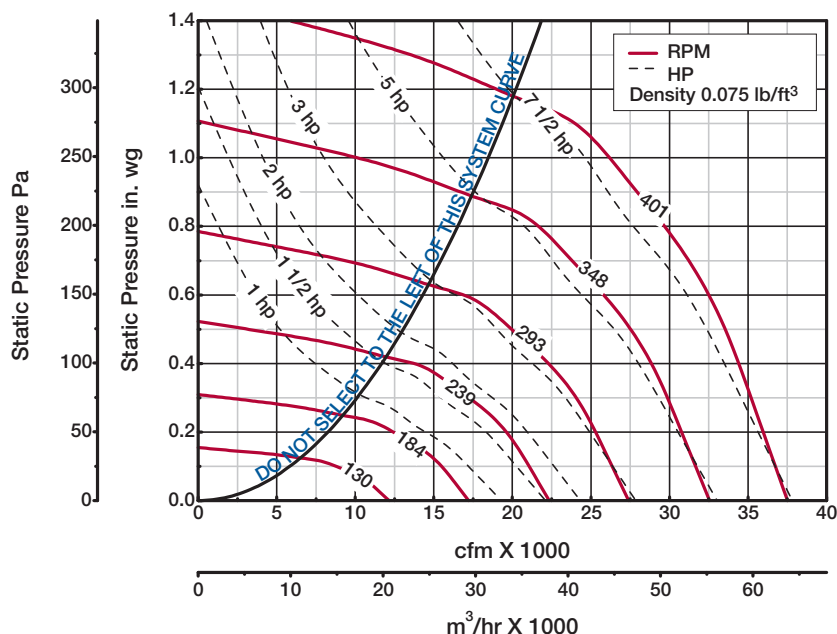
| Model Number | Motor HP | Fan RPM | | CFM / Static Pressure in Inches wg | | | | | | | | | |
|--------------|----------|---------|-------|------------------------------------|-------|-------|-------|-------|-------|-------|-------|-------|-------|
| | | | | 0 | 0.125 | 0.25 | 0.375 | 0.5 | 0.625 | 0.75 | 0.875 | 0.9 | 1 |
| LB-48-5 | 1/2 | 150 | CFM | 9666 | 6546 | | | | | | | | |
| | | | BHP | 0.21 | 0.24 | | | | | | | | |
| | | | Sones | 6.1 | 5.4 | | | | | | | | |
| | | 175 | CFM | 11277 | 8948 | | | | | | | | |
| | | | BHP | 0.34 | 0.38 | | | | | | | | |
| | | | Sones | 6.9 | 5.6 | | | | | | | | |
| | | 199 | CFM | 12824 | 10846 | 7629 | | | | | | | |
| | | | BHP | 0.5 | 0.56 | 0.54 | | | | | | | |
| | | | Sones | 7.6 | 6.8 | 7.0 | | | | | | | |
| LB-48-7 | 3/4 | 226 | CFM | 14563 | 12863 | 10741 | | | | | | | |
| | | | BHP | 0.73 | 0.81 | 0.83 | | | | | | | |
| | | | Sones | 8.5 | 8.2 | 7.5 | | | | | | | |
| LB-48-10 | 1 | 249 | CFM | 16046 | 14530 | 12787 | 10092 | | | | | | |
| | | | BHP | 0.98 | 1.07 | 1.1 | 1.08 | | | | | | |
| | | | Sones | 9.5 | 9.4 | 9.2 | 8.3 | | | | | | |
| LB-48-15 | 1 1/2 | 267 | CFM | 17205 | 15823 | 14222 | 12151 | | | | | | |
| | | | BHP | 1.2 | 1.31 | 1.35 | 1.36 | | | | | | |
| | | | Sones | 10.6 | 10.4 | 10.2 | 9.2 | | | | | | |
| | | 285 | CFM | 18365 | 17103 | 15612 | 13896 | 11357 | | | | | |
| | | | BHP | 1.46 | 1.58 | 1.63 | 1.66 | 1.61 | | | | | |
| | | | Sones | 12.3 | 11.7 | 11.1 | 10.5 | 9.6 | | | | | |
| LB-48-20 | 2 | 314 | CFM | 20234 | 19141 | 17779 | 16397 | 14665 | 11934 | | | | |
| | | | BHP | 1.96 | 2.1 | 2.17 | 2.2 | 2.22 | 2.1 | | | | |
| | | | Sones | 15.4 | 14.5 | 13.4 | 12.5 | 12.2 | 11.5 | | | | |
| LB-48-30 | 3 | 359 | CFM | 23134 | 22214 | 21041 | 19878 | 18650 | 17134 | 15069 | 11596 | | |
| | | | BHP | 2.93 | 3.1 | 3.21 | 3.25 | 3.29 | 3.31 | 3.25 | 2.84 | | |
| | | | Sones | 18.4 | 17.8 | 17.2 | 16.5 | 15.9 | 15.5 | 14.8 | 13.4 | | |
| LB-48-50 | 5 | 381 | CFM | 24552 | 23685 | 22620 | 21512 | 20378 | 19104 | 17564 | 15491 | 15076 | |
| | | | BHP | 3.5 | 3.68 | 3.81 | 3.87 | 3.92 | 3.95 | 3.95 | 3.86 | 3.85 | |
| | | | Sones | 20 | 19.6 | 19.1 | 18.6 | 17.9 | 17.4 | 17.1 | 16.2 | 16.0 | |
| | | 420 | CFM | 27065 | 26278 | 25383 | 24354 | 23363 | 22317 | 21159 | 19839 | 19534 | 18029 |
| | | | BHP | 4.69 | 4.89 | 5.05 | 5.15 | 5.21 | 5.25 | 5.29 | 5.31 | 5.3 | 5.23 |
| | | | Sones | 23 | 23 | 23 | 23 | 22 | 22 | 21 | 21 | 21 | 20 |

Performance certified is for installation type A: free inlet, free outlet. Power rating (BHP) does not include transmission losses. Performance ratings include the effects of a birdscreen in the airstream. The sound ratings shown are loudness values in fan sones at 5 feet (1.5 m) in a hemispherical free field calculated per AMCA Standard 301. Values shown are for installation type A: free inlet hemispherical sones.



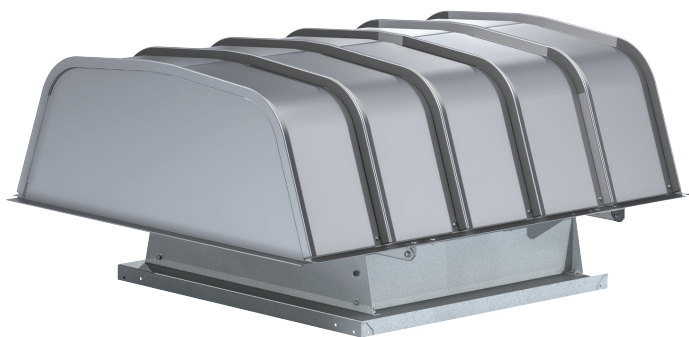
Hood Thickness = 22 ga
Curb Cap Thickness = 0.064
Damper Size = 54 x 54
Roof Opening = 56-1/2 x 56-1/2
Approximate Fan Weight* = 596

All dimensions in inches and weight is shown in pounds.
*Weight shown is the largest cataloged open drip proof motor.



| Model Number | Motor HP | Fan RPM | | CFM / Static Pressure in Inches wg | | | | | | | | | |
|--------------|----------|---------|-------|------------------------------------|-------|-------|-------|-------|-------|-------|-------|-------|-------|
| | | | | 0 | 0.125 | 0.25 | 0.375 | 0.5 | 0.625 | 0.75 | 0.875 | 1 | 1.125 |
| LB-54-10 | 1 | 130 | CFM | 12159 | | | | | | | | | |
| | | | BHP | 0.25 | | | | | | | | | |
| | | | Sones | 4.6 | | | | | | | | | |
| | | 155 | CFM | 14497 | 11186 | | | | | | | | |
| | | | BHP | 0.42 | 0.48 | | | | | | | | |
| | | | Sones | 5.8 | 4.9 | | | | | | | | |
| | | 206 | CFM | 19267 | 17356 | 13895 | | | | | | | |
| | | | BHP | 0.99 | 1.1 | 1.12 | | | | | | | |
| | | | Sones | 8.7 | 8.5 | 8.7 | | | | | | | |
| LB-54-15 | 1 1/2 | 235 | CFM | 21980 | 20319 | 17983 | 14194 | | | | | | |
| | | | BHP | 1.47 | 1.6 | 1.66 | 1.6 | | | | | | |
| | | | Sones | 11.2 | 11.2 | 11.3 | 11.7 | | | | | | |
| LB-54-20 | 2 | 258 | CFM | 24131 | 22628 | 20831 | 17904 | | | | | | |
| | | | BHP | 1.95 | 2.09 | 2.18 | 2.21 | | | | | | |
| | | | Sones | 12.1 | 12.5 | 13.0 | 13.3 | | | | | | |
| LB-54-30 | 3 | 277 | CFM | 25908 | 24517 | 22962 | 20554 | 17326 | | | | | |
| | | | BHP | 2.41 | 2.57 | 2.68 | 2.72 | 2.65 | | | | | |
| | | | Sones | 14.1 | 13.4 | 14.1 | 14.4 | 13.7 | | | | | |
| | | 296 | CFM | 27685 | 26383 | 25030 | 23122 | 20394 | 16072 | | | | |
| | | | BHP | 2.94 | 3.11 | 3.25 | 3.31 | 3.34 | 3.1 | | | | |
| | | | Sones | 17.6 | 15.5 | 15.2 | 16.0 | 15.1 | 13.1 | | | | |
| LB-54-50 | 5 | 323 | CFM | 30210 | 29017 | 27789 | 26305 | 24165 | 21535 | 17215 | | | |
| | | | BHP | 3.82 | 4.01 | 4.17 | 4.27 | 4.31 | 4.29 | 4.01 | | | |
| | | | Sones | 19.3 | 17.8 | 17.3 | 18.4 | 18.3 | 16.8 | 14.7 | | | |
| | | 350 | CFM | 32736 | 31634 | 30514 | 29312 | 27766 | 25487 | 22974 | 18944 | | |
| | | | BHP | 4.87 | 5.06 | 5.25 | 5.39 | 5.46 | 5.5 | 5.43 | 5.13 | | |
| | | | Sones | 18.9 | 19.5 | 20 | 21 | 22 | 21 | 19.0 | 17.8 | | |
| LB-54-75 | 7 1/2 | 376 | CFM | 35167 | 34142 | 33111 | 32039 | 30716 | 29030 | 26889 | 24483 | 20824 | |
| | | | BHP | 6.03 | 6.25 | 6.45 | 6.62 | 6.72 | 6.79 | 6.82 | 6.71 | 6.4 | |
| | | | Sones | 22 | 23 | 23 | 24 | 25 | 26 | 24 | 22 | 21 | |
| | | 401 | CFM | 37506 | 36544 | 35583 | 34583 | 33500 | 32150 | 30332 | 28324 | 26018 | 22767 |
| | | | BHP | 7.32 | 7.54 | 7.77 | 7.96 | 8.11 | 8.19 | 8.24 | 8.29 | 8.13 | 7.81 |
| | | | Sones | 25 | 26 | 26 | 27 | 28 | 29 | 29 | 27 | 26 | 24 |

Performance certified is for installation type A: free inlet, free outlet. Power rating (BHP) does not include transmission losses. Performance ratings include the effects of a birdscreen in the airstream. The sound ratings shown are loudness values in fan sones at 5 feet (1.5 m) in a hemispherical free field calculated per AMCA Standard 301. Values shown are for installation type A: free inlet hemispherical sones.



The LB exhaust fans shall be belt drive type. The fan wheel shall be centrifugal backward inclined, constructed of aluminum and shall include a wheel cone carefully matched to the fan's venturi for precise running tolerances.

Wheels shall be statically and dynamically balanced. The fan shall be constructed of heavy-gauge steel or aluminum with a rigid internal support structure and birdscreen.

Motors shall be heavy-duty ball bearing type, carefully matched to the fan load, and furnished at the specified voltage, phase and enclosure. Drive frame assembly shall be constructed of heavy-gauge steel. Motors and drives shall be mounted on vibration isolators. Motors and drives shall be readily accessible for maintenance.

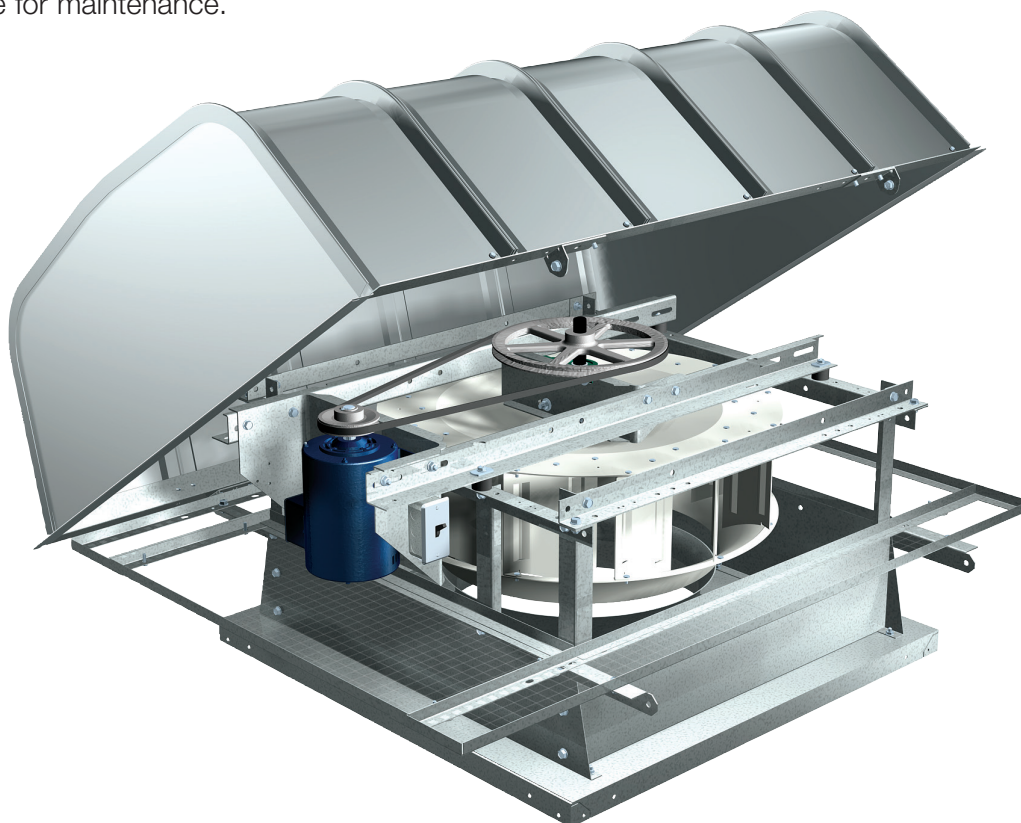
Precision ground and polished fan shafts shall be mounted in permanently sealed, lubricated pillow block ball bearings. Bearings shall be selected for a minimum L_{10} life in excess of 100,000 hours (L_{50} average of 500,000 hours) at maximum cataloged operating speed. Drives shall be sized for a minimum of 150% of driven horsepower. Pulleys shall be of the cast type, keyed and securely attached to the wheel and motor shafts.

Motor pulleys shall be adjustable for final system balancing. A disconnect switch shall be factory installed and wired from the fan motor to a junction box installed within the motor compartment. A conduit chase shall be provided through the base to the motor compartment for ease of electrical wiring.

All fans shall bear the AMCA Certified Ratings Seal for Sound and Air Performance.

Each fan shall bear a permanently affixed manufacturer's engraved aluminum nameplate containing the model number and individual serial number for future identification.

Fans shall be model LB as manufactured by Greenheck Fan Corporation in Schofield, Wisconsin, USA.



Extraordinary Service

Enjoy Greenheck's extraordinary service, before, during and after the sale.

Greenheck offers added value to our wide selection of top performing, energy-efficient products by providing several unique service programs.



Our Quick Delivery program ensures shipment of in-stock products within 24 hours of placing your order. Our Quick Build made-to-order products are manufactured in 1-3-5-10-15 or 25-day production cycles, depending upon its complexity.

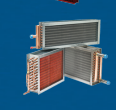
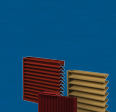
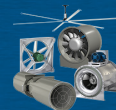
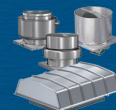
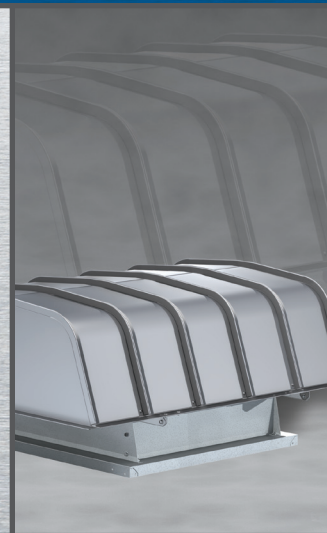


Greenheck's free computer aided product selection program CAPS®, rated by many as the best in the industry, helps you conveniently and efficiently select the right products for the challenge at hand.



Our 3D service allows you to download, at no charge, easy-to-use AutoDesk® Revit® 3D drawings for many of our ventilation products.

Find out more about these special services at greenheck.com



Building Value in Air

Greenheck delivers value to mechanical engineers by helping them solve virtually any air quality challenges their clients face with a comprehensive selection of

top-quality, innovative air-related equipment. We offer extra value to contractors by providing easy-to-install, competitively-priced, reliable products that arrive on time.

And building owners and occupants value the energy efficiency, low maintenance and quiet dependable operation they experience long after the construction project ends.

Our Commitment

As a result of our commitment to continuous improvement, Greenheck reserves the right to change specifications without notice.

Specific Greenheck product warranties are located on greenheck.com within the product area tabs and in the Library under Warranties.

