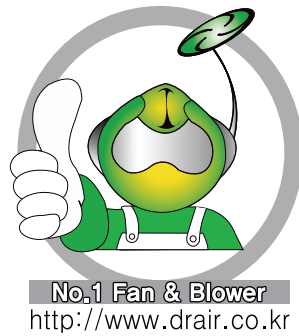


본 제품의 규격은 품질개선을 위하여 예고없이 변경될 수 있으므로 제품구입시 문의 바랍니다.
Since specifications of products can be changed without inform in order to improve the quality, please call us to confirm them.



No.1 Fan & Blower
<http://www.drair.co.kr>

자연과 환경, 그리고 사람을 생각하는 브랜드

DR 환기송풍기 CENTRIFUGAL FAN DR-TFS series

May 2016 (Rev.00)



 **대륜산업주식회사**
Dae Ryun Ind. Co., Ltd.

본사/공장 565-902 전라북도 완주군 봉동읍 완주산단7로115 (둔산리 926-3번지)
TEL (063)262-5100 FAX (063)262-5107
서울사업소 445-862 경기도 화성시 마도면 마도로 608 (청원리 32-1번지)
TEL (031)8047-5161 FAX (031)8047-5163
고객서비스센터 1644-5153



 **대륜산업주식회사**
Dae Ryun Ind. Co., Ltd.

INDEX

1. Index, AMCA Seal Information	----- 2 PAGE
2. Product Characteristic	----- 3 PAGE
3. Overall Dimensions	----- 4 PAGE
4. Performance Curves and Sound Data	----- 5 ~ 11 PAGE



대륜산업(주)가 획득한 DR-TFS SERIES TURBO FAN의 AMCA seal에 대한 내용입니다. 등급표시는 AMCA 211과 AMCA 311에 의거 테스트 및 절차에 따른 것이며, AMCA 보증프로그램의 요구사항과 일치합니다.

"Dae-Ryun Ind. Co., Ltd." certifies that the "DR-TFS" Turbo Fans shown herein are licensed to bear the AMCA Seal. The ratings shown are based on tests and procedures performed in accordance with AMCA Publication 211 and AMCA Publication 311 and comply with the requirements of the AMCA Certified Ratings Program."



형상

IMPELLER BACKWARD CURVE TYPE (후곡형)

특징

- 풍량은 TURBO BLOWER보다 대용량의 기체를 효율적으로 송·배풍함
- 150~1000mmAq의 고풍압에 적당함
- IMPELLER 구조가 강대하면서 견고하며 유체역학적으로도 무리가 없으므로 높은 효율과 고속회전이 가능하여 광범위한 용도에 사용됨 특히 대형구조가 가능하며 사용상태에 따라 회전수 변경이 용이함

용도

- BOILER의 송·배풍용, PULP 제지공업, 집진장치, 일반화학공업, 공기전송장치, CEMENT 공업 등 각종 산업용에 널리 쓰임

송풍기 회전방향 (흡입구 측 기준으로 바라본 토출구 위치)

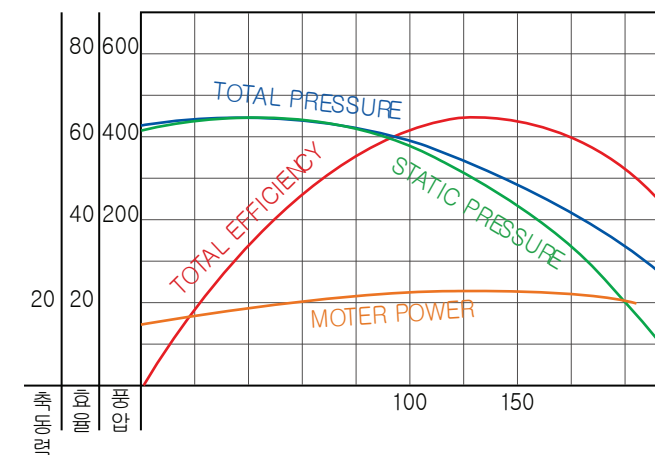
A	B	C	D	E	F	G	H
1-W	2-Z	3-W	4-Z	5-W	5-Z	6-W	6-Z

송풍기의 모델명 읽는 방법 예시

모 델 명 : DR - TF #3 S S

DR - TF : 팬 기종 (Turbo Fan)
 #3 : Impeller의 외경등을 6inch로 나눈값 (Fan No.)
 S S : 베어링 지지방법 (D: 양지형 / S: 편지형)
 Single Suction (D: 양흡입형 / S: 편 흡입형)
 제작회사 표기 (대륜산업의 약자)

TURBO FAN의 특징



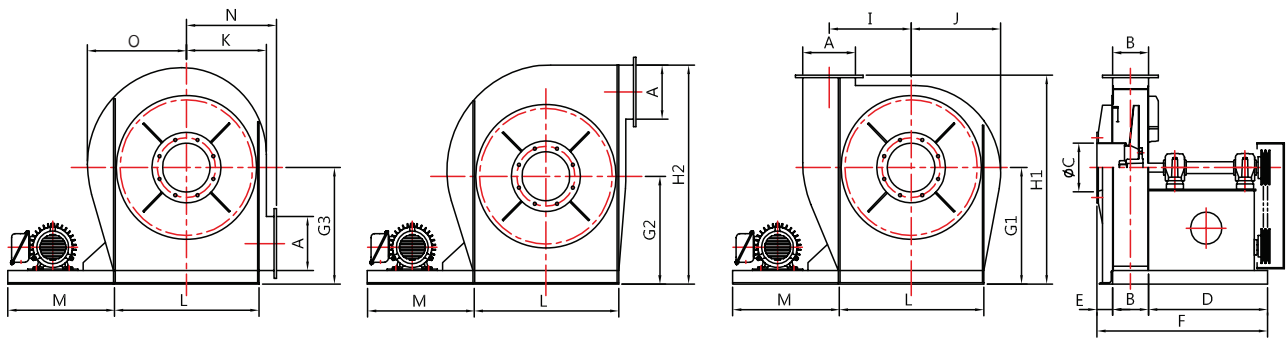
- 압 력곡선은 풍량 30~40% 상태에서 최고가 되며, 이 풍량 이하가 서어징 영역이며 곡선은 안정된 상태를 유지함
- 동 력곡선은 최고효율보다도 풍량이 큰점에서 포화된 형태가 되며 이때의 동력보다도 큰 동력의 전동기를 선정해야 함

벨트 구동형 터보팬

Belt driven Turbo Fan

▶ 터보팬 규격표

외형도



규격표

MODEL	토출구		흡입구	FAN 폭				센터높이			FAN 높이		FAN 상부 길이						FAN 베이스 길이
	A	B	C	B	D	E	F	G1	G2	G3	H1	H2	I	J	K	O	N	L	
DR-TF#2SS	200	140	200	140	446	60	646	320	290	365	570	595	205	240	210	270	250	360	
DR-TF#2.5SS	250	175	250	175	446	60	681	385	345	440	680	725	255	295	255	335	295	440	
DR-TF#3SS	300	210	300	210	430	60	700	475	425	545	815	885	310	350	300	400	340	570	
DR-TF#3.5SS	350	245	350	245	430	60	735	545	485	620	935	1020	360	410	350	470	390	670	
DR-TF#4SS	400	280	400	280	470	60	810	610	540	695	1055	1150	410	465	395	535	445	760	
DR-TF#4.5SS	450	315	450	315	535	60	910	680	600	775	1175	1290	465	525	445	605	495	860	
DR-TF#5SS	500	350	500	350	580	60	1000	770	680	870	1320	1440	510	555	490	670	550	960	

Motor Base	Fr. No.	80M	90L	100L	112M	132S	132M	160M	160L
	M	450	450	450	450	500	500	600	600
	Fr. No.	180M	180L	200L	225S	250S	250M		
	M	650	700	700	800	900	950		

*모터 용량에 따라 길이가 변경됨.



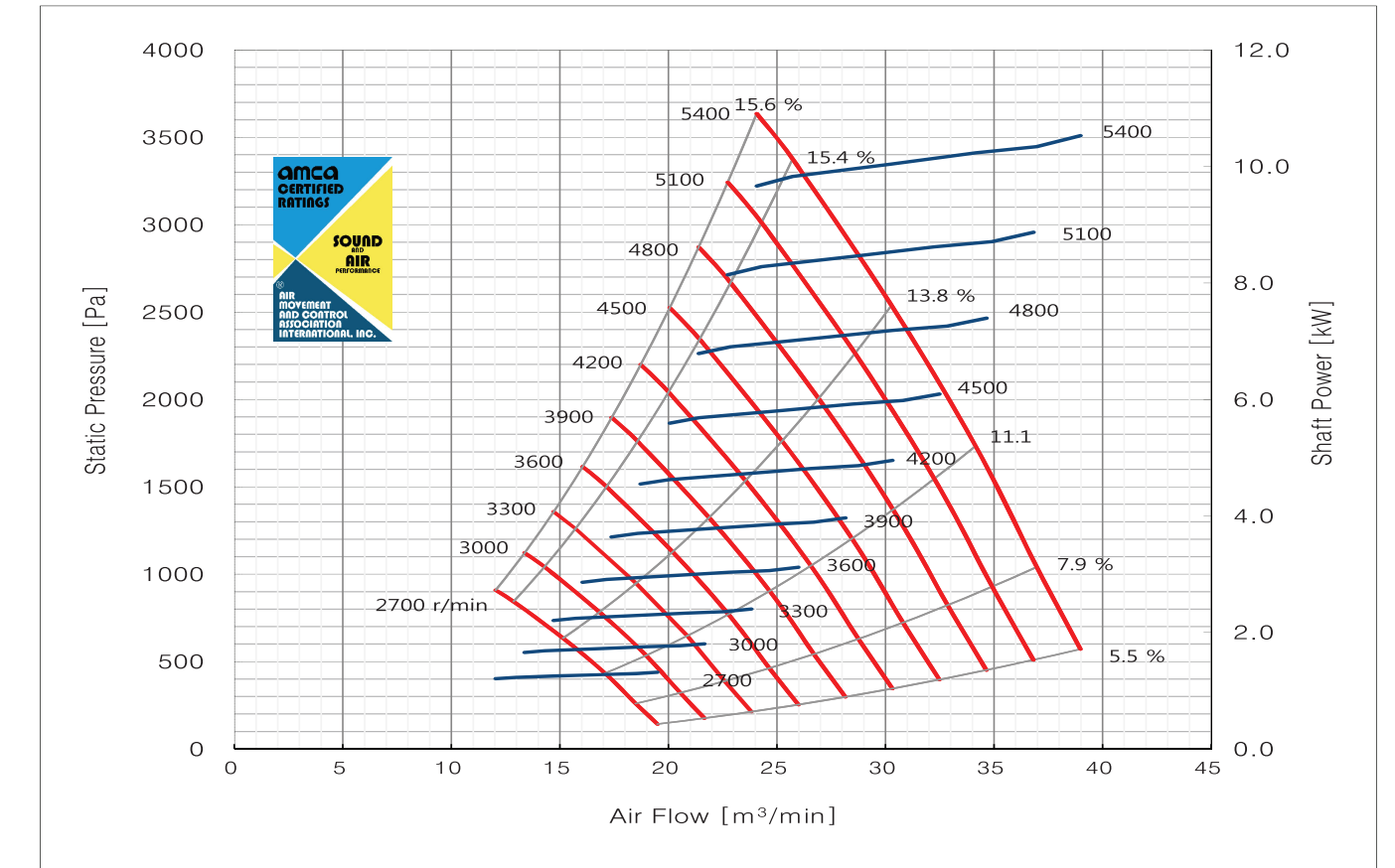
벨트 구동형 터보팬

Belt driven Turbo Fan

성능곡선

Dae-Ryun Ind. Co., LTD									DR-TFS Series									Model : DR-TF#2SS	
Wheel DIA. : 304 mm									Outlet Dim : 140 X 200 mm									Outlet Area : 0.028 m ²	
Det.	N	Pt	Ps	Q	H	EtaT	EtaS	LwIA	Det.	N	Pt	Ps	Q	H	EtaT	EtaS	LwIA		
[r/min]	[Pa]	[Pa]	m ³ /min	[kW]	[%]	[%]	[dB]		[r/min]	[Pa]	[Pa]	m ³ /min	[kW]	[%]	[%]	[dB]			
1	2700	227	143	19	1.32	5.5	3.5	95	1	3000	281	177	21	1.81	5.5	3.5	97		
2		339	260	18	1.30	7.9	6.2	95	2		418	321	20	1.78	7.9	6.2	97		
3		504	434	17	1.28	11.1	9.7	95	3		622	535	18	1.76	11.1	9.7	97		
4		695	635	15	1.26	13.8	12.8	94	4		858	783	16	1.73	13.8	12.8	96		
5		895	844	12	1.23	15.4	14.7	94	5		1105	1042	14	1.69	15.4	14.7	96		
6		956	909	12	1.21	15.6	15.1	94	6		1180	1122	13	1.66	15.6	15.1	96		
1	3300	340	214	23	2.41	5.5	3.5	99	1	3600	404	254	25	3.12	5.5	3.5	107		
2		506	389	22	2.37	7.9	6.2	99	2		602	463	24	3.07	7.9	6.2	107		
3		753	648	20	2.34	11.1	9.7	99	3		896	771	22	3.04	11.1	9.7	107		
4		1039	948	18	2.30	13.8	12.8	98	4		1236	1128	20	2.98	13.8	12.8	106		
5		1336	1261	15	2.25	15.4	14.7	98	5		1591	1501	17	2.92	15.4	14.7	107		
6		1428	1358	14	2.21	15.6	15.1	98	6		1700	1616	16	2.87	15.6	15.1	108		
1	3900	475	298	28	3.97	5.5	3.5	109	1	4200	550	346	30	4.96	5.5	3.5	110		
2		707	543	26	3.90	7.9	6.2	108	2		820	630	28	4.87	7.9	6.2	110		
3		1052	905	24	3.86	11.1	9.7	108	3		1220	1049	26	4.82	11.1	9.7	109		
4		1451	1324	21	3.79	13.8	12.8	108	4		1682	1536	23	4.73	13.8	12.8	109		
5		1867	1761	18	3.71	15.4	14.7	108	5		2165	2043	19	4.63	15.4	14.7	109		
6		1995	1896	17	3.65	15.6	15.1	109	6		2314	2199	18	4.55	15.6	15.1	110		
1	4500	632	397	32	6.10	5.5	3.5	111	1	4800	719	452	34	7.40	5.5	3.5	112		
2		941	723	30	5.99	7.9	6.2	111	2		1071	823	32	7.27	7.9	6.2	112		
3		1400	1204	28	5.93	11.1	9.7	111	3		1593	1370	30	7.19	11.1	9.7	112		
4		1931	1763	25	5.82	13.8	12.8	110	4		2197	2006	26	7.06	13.8	12.8	111		
5		2485	2345	21	5.69	15.4	14.7	110	5		2828	2668	22	6.91	15.4	14.7	111		
6		2656	2525	20	5.60	15.6	15.1	111	6		3022	2872	21	6.79	15.6	15.1	112		
1	5100	812	510	36	8.88	5.5	3.5	113	1	5400	910	572	38	10.53	5.5	3.5	114		
2		1209	929	34	8.72	7.9	6.2	113	2		1355	1041	36	10.35	7.9	6.2	114		
3		1799	1547	32	8.63	11.1	9.7	113	3		2017	1734	34	10.24	11.1	9.7	113		
4		2481	2264	28	8.47	13.8	12.8	112	4		2781	2538	30	10.05	13.8	12.8	113		
5		3192	3012	24	8.28	15.4	14.7	112	5		3579	3377	25	9.83	15.4	14.7	113		
6		3412	3243	22	8.15	15.6	15.1	113	6		3825	3635	24	9.67	15.6	15.1	114		

- The A-Weighted sound rating shown have been calculated per AMCA Standard 301.
- Value shown are for inlet LwIA sound power levels for installation type B - free inlet, ducted outlet.
- Performance certified is for installation type B - free inlet, ducted outlet.
- Performance ratings do not include the effects of apputenances(accessories), Power rating Kw does not include transmission losses



*상기 자료는 품질관리를 위해 예고없이 변경될 수 있습니다.

*상기 자료는 품질관리를 위해 예고없이 변경될 수 있습니다.

벨트 구동형 터보팬

Belt driven Turbo Fan

성능곡선

Dae-Ryun Ind. Co., LTD

DR-TFS Series

Model : DR-TF#2.5SS

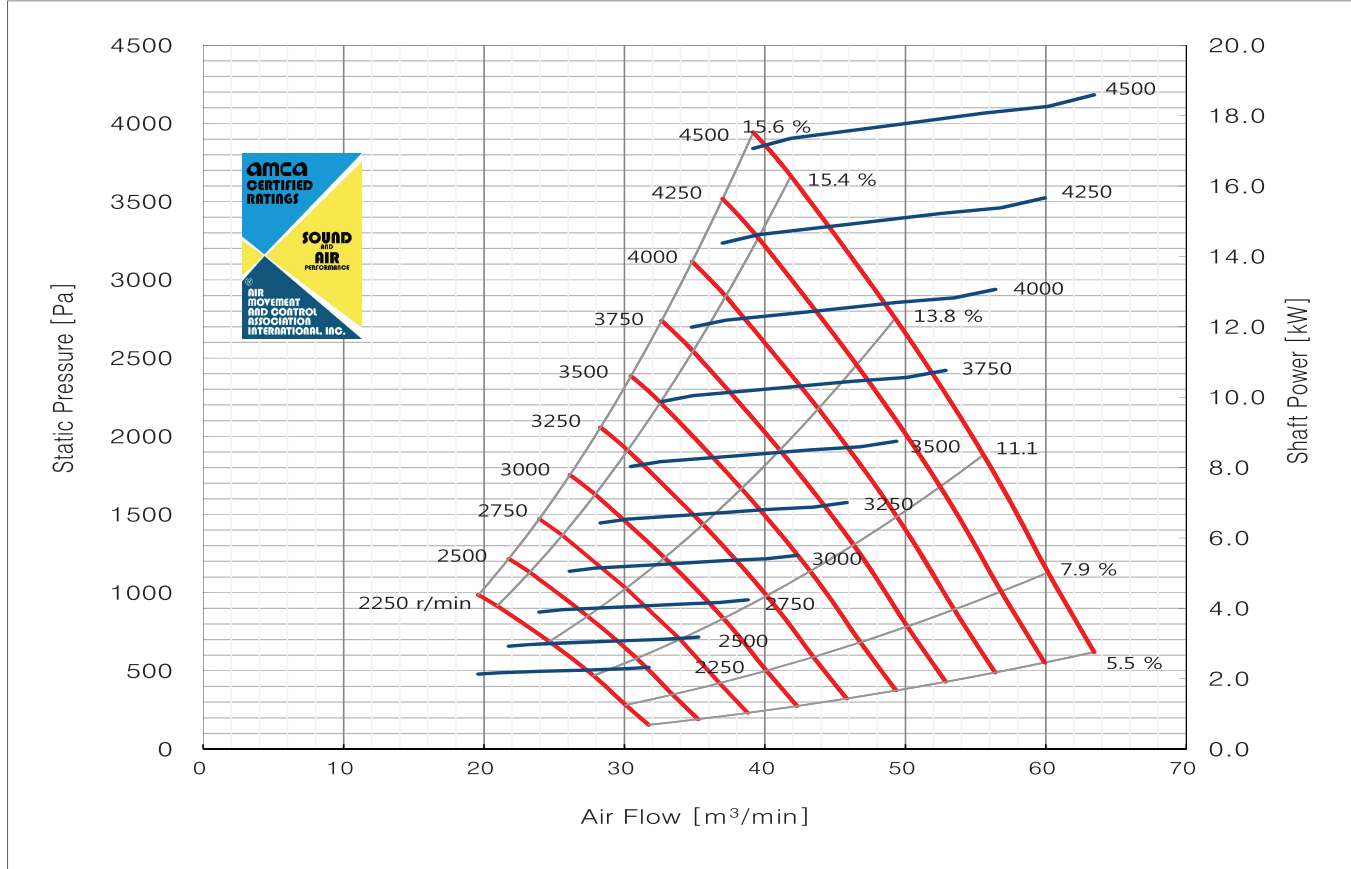
Wheel DIA. : 380 mm

Outlet Dim : 175 X 250 mm

Outlet Area : 0.044 m²

Det.	N [r/min]	Pt [Pa]	Ps [Pa]	Q m ³ /min	H [kW]	EtaT [%]	EtaS [%]	LwiA [dB]	Det.	N [r/min]	Pt [Pa]	Ps [Pa]	Q m ³ /min	H [kW]	EtaT [%]	EtaS [%]	LwiA [dB]
1	2250	247	155	32	2.33	5.5	3.5	99	1	2500	305	192	35	3.19	5.5	3.5	101
2		368	283	30	2.29	7.9	6.2	99	2		454	349	33	3.14	7.9	6.2	101
3		547	470	27	2.26	11.1	9.7	98	3		675	581	30	3.10	11.1	9.7	100
4		754	689	24	2.22	13.8	12.8	97	4		931	850	27	3.05	13.8	12.8	99
5		971	916	20	2.17	15.4	14.7	97	5		1198	1131	23	2.98	15.4	14.7	99
6		1038	986	19	2.14	15.6	15.1	98	6		1281	1217	21	2.93	15.6	15.1	100
1	2750	369	232	38	4.25	5.5	3.5	103	1	3000	439	276	42	5.52	5.5	3.5	104
2		549	422	36	4.17	7.9	6.2	102	2		654	502	40	5.42	7.9	6.2	104
3		817	703	33	4.13	11.1	9.7	102	3		973	836	37	5.36	11.1	9.7	104
4		1127	1029	30	4.05	13.8	12.8	101	4		1341	1224	32	5.26	13.8	12.8	102
5		1450	1368	25	3.97	15.4	14.7	101	5		1726	1628	27	5.15	15.4	14.7	103
6		1550	1473	23	3.90	15.6	15.1	101	6		1845	1753	26	5.06	15.6	15.1	103
1	3250	515	324	45	7.01	5.5	3.5	106	1	3500	597	375	49	8.75	5.5	3.5	107
2		767	589	43	6.88	7.9	6.2	106	2		890	684	46	8.60	7.9	6.2	107
3		1141	982	40	6.81	11.1	9.7	105	3		1324	1138	43	8.51	11.1	9.7	107
4		1574	1437	35	6.69	13.8	12.8	104	4		1825	1666	38	8.35	13.8	12.8	106
5		2025	1911	30	6.54	15.4	14.7	104	5		2349	2217	32	8.17	15.4	14.7	106
6		2165	2058	28	6.44	15.6	15.1	105	6		2511	2386	30	8.04	15.6	15.1	106
1	3750	686	431	52	10.77	5.5	3.5	115	1	4000	780	490	56	13.07	5.5	3.5	116
2		1021	785	50	10.57	7.9	6.2	115	2		1162	893	53	12.83	7.9	6.2	116
3		1520	1307	46	10.46	11.1	9.7	115	3		1729	1487	49	12.70	11.1	9.7	116
4		2096	1913	41	10.27	13.8	12.8	114	4		2384	2176	43	12.46	13.8	12.8	115
5		2697	2545	34	10.05	15.4	14.7	114	5		3068	2895	37	12.20	15.4	14.7	115
6		2882	2739	32	9.88	15.6	15.1	115	6		3279	3117	34	11.99	15.6	15.1	116
1	4250	881	554	59	15.67	5.5	3.5	117	1	4500	987	621	63	18.60	5.5	3.5	117
2		1312	1008	56	15.39	7.9	6.2	117	2		1471	1130	60	18.27	7.9	6.2	117
3		1952	1679	52	15.23	11.1	9.7	116	3		2188	1882	55	18.08	11.1	9.7	117
4		2692	2457	46	14.95	13.8	12.8	116	4		3018	2754	49	17.74	13.8	12.8	116
5		3464	3268	39	14.63	15.4	14.7	116	5		3883	3664	41	17.36	15.4	14.7	117
6		3702	3519	36	14.39	15.6	15.1	117	6		4150	3945	39	17.08	15.6	15.1	118

- The A-Weighted sound rating shown have been calculated per AMCA Standard 301
- Value shown are for inlet LwiA sound power levels for installation type B - free inlet, ducted outlet.
- Performance certified is for installation type B - free inlet, ducted outlet.
- Performance ratings do not include the effects of apputenances(accessories), Power rating Kw does not include transmission losses



*상기 자료는 품질관리를 위해 예고없이 변경될 수 있습니다.

벨트 구동형 터보팬

Belt driven Turbo Fan

성능곡선

Dae-Ryun Ind. Co., LTD

DR-TFS Series

Model : DR-TF#3SS

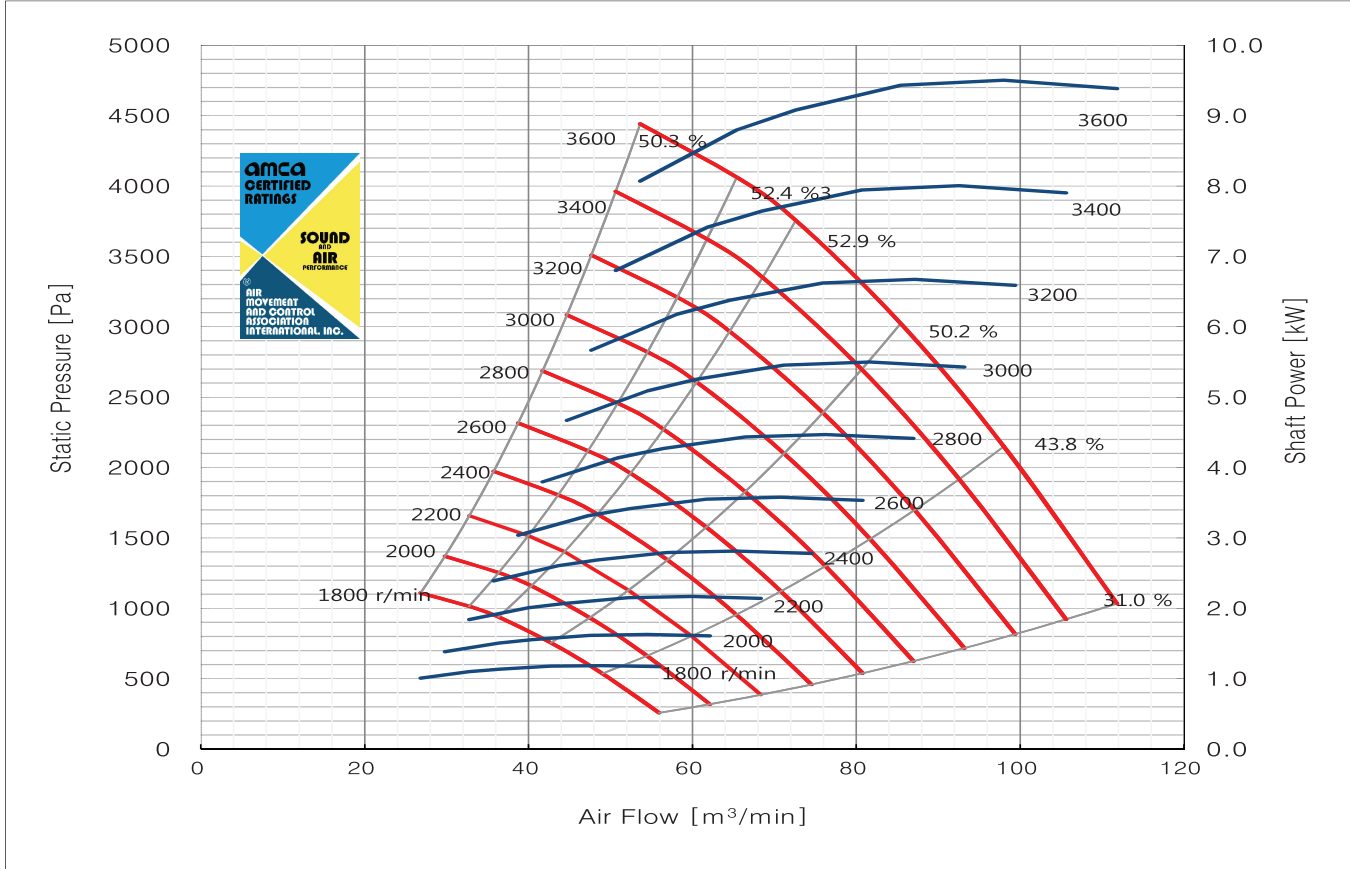
Wheel DIA. : 456 mm

Outlet Dim : 210 X 300 mm

Outlet Area : 0.063 m²

Det.	N [r/min]	Pt [Pa]	Ps [Pa]	Q m ³ /min	H [kW]	EtaT [%]	EtaS [%]	LwiA [dB]	Det.	N [r/min]	Pt [Pa]	Ps [Pa]	Q m ³ /min	H [kW]	EtaT [%]	EtaS [%]	LwiA [dB]
1	1800	397	259	56	1.18	31.0	20.6	99	1	2000	490	319	62	1.61	31.0	20.6	100
2		649	538	49	1.19	43.8	36.9	98	2		802	664	54	1.63	43.8	36.9	99
3		847	756	42	1.18	50.2	45.6	103	3		1046	934	47	1.62	50.2	45.6	103
4		1012	939	36	1.14	52.9	49.9	107	4		1249	1160	40	1.56	52.9	49.9	107
5		1079	1016	32	1.10	52.4	50.2	109	5		1332	1254	36	1.51	52.4	50.2	108
6		1160	1110	26	1.01	50.3	49.0	112	6		1433	1371	29	1.39	50.3	49.0	111
1	2200	593	386	68	2.15	31.0	20.6	101	1	2400	706	460	74	2.79	31.0	20.6	102
2		970	803	59	2.17	43.8	36.9	100	2		1155	956	65	2.82	43.8	36.9	101
3		1266	1130	52	2.16	50.2	45.6	103	3		1506	1345	56	2.80	50.2	45.6	103
4		1512	1403	44	2.08	52.9	49.9	106	4		1799	1670	48	2.70	52.9	49.9	106
5		1612	1517	39	2.01	52.4	50.2	108	5		1918	1806	43	2.61	52.4	50.2	108
6		1734	1659	32	1.85	50.3	49.0	110	6		2063	1974	35	2.40	50.3	49.0	110
1	2600	828	540	80	3.54	31.0	20.6	104	1	2800	960	626	86	4.42	31.0	20.6	105
2		1355	1122	70	3.59	43.8	36.9	102	2		1571	1301	76	4.48	43.8	36.9	103
3		1768	1578	61	3.56	50.2	45.6	104	3		2050	1830	66	4.44	50.2	45.6	104
4		2111	1960	52	3.43	52.9	49.9	106	4		2448	2273	56	4.28	52.9	49.9	107
5		2251	2119	47	3.32	52.4	50.2	108	5		2611	2458	50	4.15	52.4	50.2	108
6		2421	2317	38	3.05	50.3	49.0	110	6		2808	2687	41	3.80	50.3	49.0	110
1	3000	1103	718	93	5.44	31.0	20.6	106	1	3200	1254	817	99	6.60	31.0	20.6	108
2		1804	1493	81	5.50	43.8	36.9	104	2		2053	1699	87	6.68	43.8	36.9	105
3		2354	2101	71	5.46	50.2	45.6	105	3		2678	2390	75	6.63	50.2	45.6	106
4		2811	2609	60	5.26	52.9	49.9	107	4		3198	2969	64	6.38	52.9	49.9	108
5		2998	2821	54	5.10	52.4	50.2	108	5		3411	3210	58	6.19	52.4	50.2	109
6		3223	3084	44	4.68	50.3	49.0	110	6		3668	3509	47	5.67	50.3	49.0	110
1	3400	1416	923	105	7.91	31.0	20.6	109	1	3600	1588	1034	111	9.39	31.0	20.6	119
2		2317	1918	92	8.01	43.8	36.9	106	2		2598	2150	98	9.51	43.8	36.9	118
3		3023	2698	80	7.95	50.2	45.6	107	3		3389	3025	85	9.44	50.2	45.6	123
4		3610	3351	68	7.65	52.9	49.9	108	4		4047	3757	72	9.08	52.9	49.9	127
5		3850	3624	61	7.42	52.4	50.2	109	5		4316	4063	65	8.80	52.4	50.2	129
6		4140	3962	50	6.81	50.3	49.0	111	6		4642	4442	53	8.08	50.3	49.0	132

- The A-Weighted sound rating shown have been calculated per AMCA Standard 301
- Value shown are for inlet LwiA sound power levels for installation type B - free inlet, ducted outlet.
- Performance certified is for installation type B - free inlet, ducted outlet.
- Performance ratings do not include the effects of apputenances(accessories), Power rating Kw does not include transmission losses



*상기 자료는 품질관리를 위해 예고없이 변경될 수 있습니다.

벨트 구동형 터보팬

Belt driven Turbo Fan

성능곡선

Dae-Ryun Ind. Co., LTD

DR-TFS Series

Model : DR-TF#3.5SS

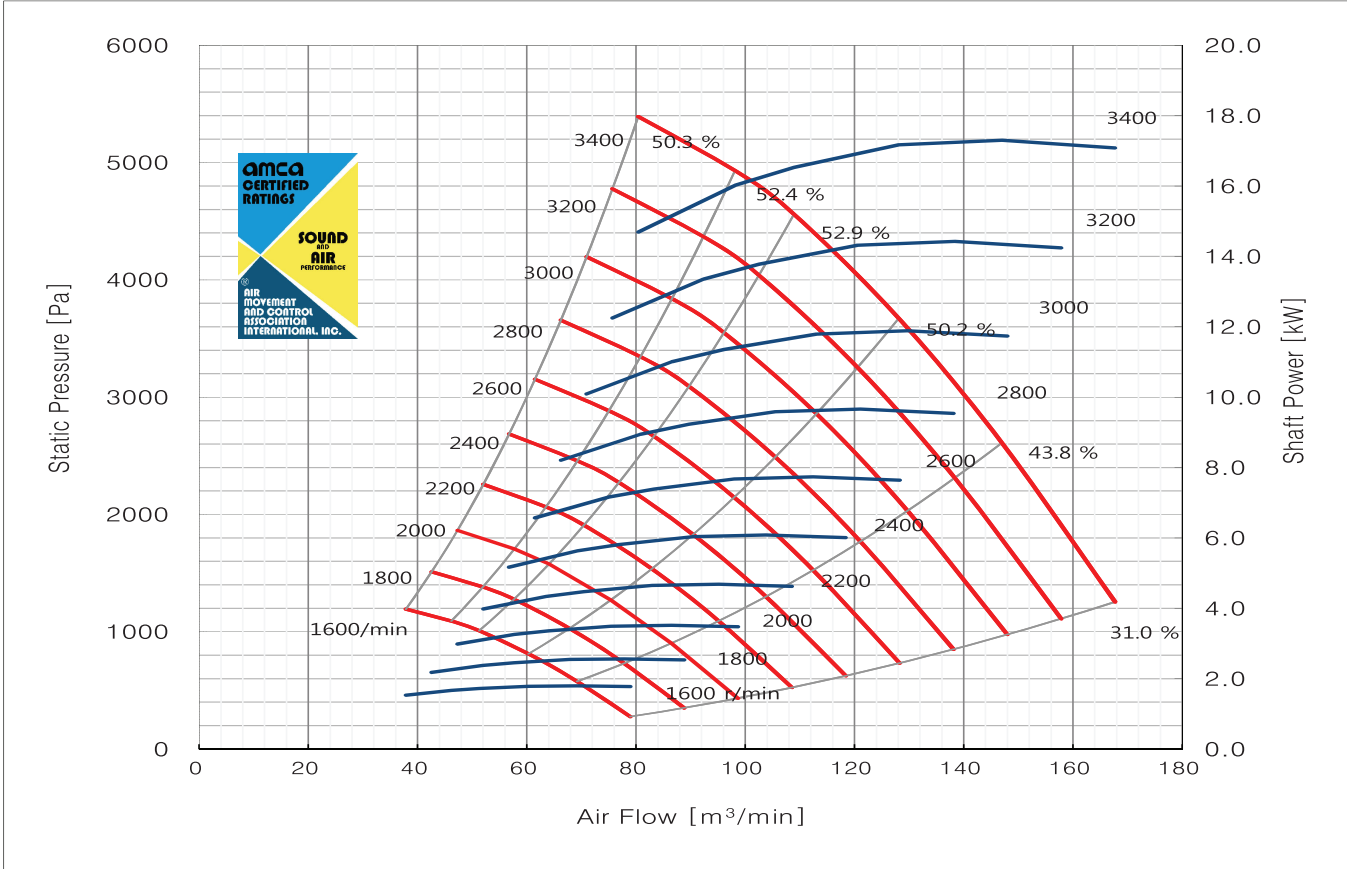
Wheel DIA. : 532 mm

Outlet Dim : 245 X 350 mm

Outlet Area : 0.086 m²

Det.	N [r/min]	Pt [Pa]	Ps [Pa]	Q m ³ /min	H [kW]	EtaT [%]	EtaS [%]	LwiA [dB]	Det.	N [r/min]	Pt [Pa]	Ps [Pa]	Q m ³ /min	H [kW]	EtaT [%]	EtaS [%]	LwiA [dB]
1	1600	427	278	79	1.79	31.0	20.6	97	1	1800	540	352	88	2.54	31.0	20.6	105
2		698	578	69	1.81	43.8	36.9	95	2		884	732	77	2.57	43.8	36.9	104
3		911	813	60	1.79	50.2	45.6	92	3		1153	1029	67	2.55	50.2	45.6	102
4		1088	1010	51	1.73	52.9	49.9	91	4		1377	1278	57	2.46	52.9	49.9	102
5		1161	1092	46	1.67	52.4	50.2	90	5		1469	1382	51	2.38	52.4	50.2	101
6		1248	1194	37	1.54	50.3	49.0	90	6		1580	1511	42	2.19	50.3	49.0	101
1	2000	667	435	98	3.48	31.0	20.6	107	1	2200	807	526	108	4.63	31.0	20.6	108
2		1091	903	86	3.53	43.8	36.9	105	2		1320	1093	95	4.69	43.8	36.9	106
3		1424	1271	75	3.50	50.2	45.6	103	3		1723	1538	82	4.66	50.2	45.6	104
4		1700	1578	64	3.37	52.9	49.9	103	4		2057	1910	70	4.48	52.9	49.9	104
5		1813	1707	57	3.27	52.4	50.2	102	5		2194	2065	63	4.35	52.4	50.2	103
6		1950	1866	47	3.00	50.3	49.0	103	6		2360	2258	52	3.99	50.3	49.0	104
1	2400	960	626	118	6.01	31.0	20.6	110	1	2600	1127	734	128	7.65	31.0	20.6	111
2		1571	1301	103	6.09	43.8	36.9	108	2		1844	1527	112	7.74	43.8	36.9	109
3		2050	1830	90	6.05	50.2	45.6	106	3		2406	2148	97	7.68	50.2	45.6	107
4		2448	2273	76	5.82	52.9	49.9	105	4		2873	2667	83	7.40	52.9	49.9	106
5		2611	2458	69	5.64	52.4	50.2	105	5		3065	2884	75	7.17	52.4	50.2	106
6		2808	2687	56	5.17	50.3	49.0	105	6		3296	3153	61	6.58	50.3	49.0	106
1	2800	1307	852	138	9.55	31.0	20.6	113	1	3000	1501	978	147	11.74	31.0	20.6	114
2		2139	1771	121	9.67	43.8	36.9	110	2		2455	2033	129	11.89	43.8	36.9	112
3		2791	2491	105	9.60	50.2	45.6	108	3		3204	2859	113	11.80	50.2	45.6	109
4		3333	3094	89	9.24	52.9	49.9	107	4		3826	3551	96	11.36	52.9	49.9	109
5		3554	3345	80	8.95	52.4	50.2	107	5		4080	3840	86	11.01	52.4	50.2	108
6		3822	3657	66	8.21	50.3	49.0	107	6		4388	4198	70	10.10	50.3	49.0	108
1	3200	1708	1112	157	14.25	31.0	20.6	116	1	3400	1928	1256	167	17.09	31.0	20.6	117
2		2794	2313	138	14.43	43.8	36.9	113	2		3154	2611	146	17.31	43.8	36.9	114
3		3645	3253	120	14.32	50.2	45.6	111	3		4115	3673	128	17.18	50.2	45.6	112
4		4353	4041	102	13.79	52.9	49.9	110	4		4914	4561	108	16.54	52.9	49.9	111
5		4642	4369	92	13.36	52.4	50.2	109	5		5240	4932	98	16.03	52.4	50.2	110
6		4992	4777	75	12.26	50.3	49.0	109	6		5636	5392	80	14.70	50.3	49.0	110

- The A-Weighted sound rating shown have been calculated per AMCA Standard 301
- Value shown are for inlet LwiA sound power levels for installation type B - free inlet, ducted outlet.
- Performance certified is for installation type B - free inlet, ducted outlet.
- Performance ratings do not include the effects of apputenances(accessories), Power rating Kw does not include transmission losses



*상기 자료는 품질관리를 위해 예고없이 변경될 수 있습니다.



벨트 구동형 터보팬

Belt driven Turbo Fan

성능곡선

Dae-Ryun Ind. Co., LTD

DR-TFS Series

Model : DR-TF#4SS

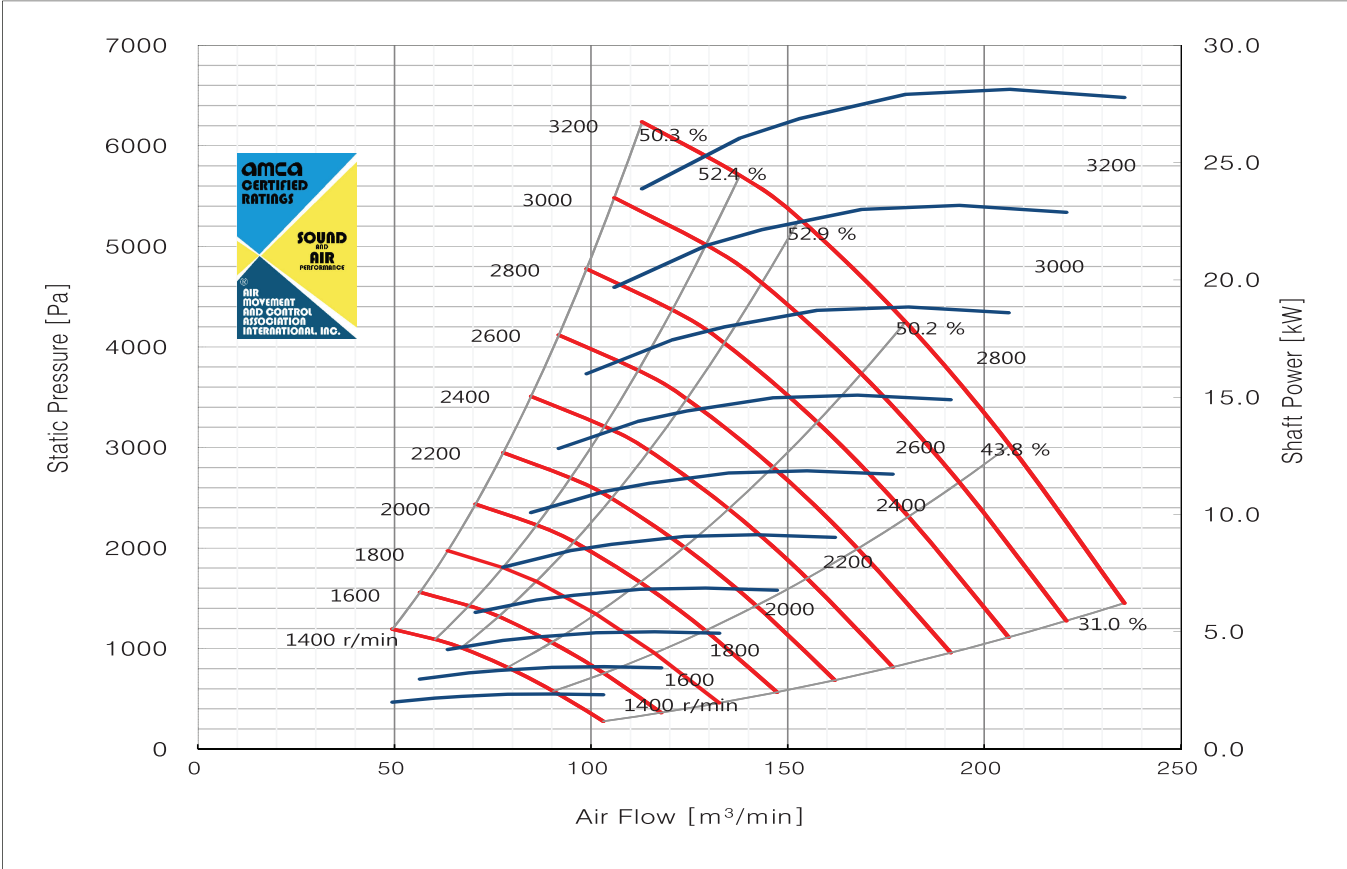
Wheel DIA. : 608 mm

Outlet Dim : 280 X 400 mm

Outlet Area : 0.112 m²

Det.	N [r/min]	Pt [Pa]	Ps [Pa]	Q m ³ /min	H [kW]	EtaT [%]	EtaS [%]	LwiA [dB]	Det.	N [r/min]	Pt [Pa]	Ps [Pa]	Q m ³ /min	H [kW]	EtaT [%]	EtaS [%]	LwiA [dB]
1	1400	427	278	103	2.33	31.0	20.6	99	1	1600	558	363	117	3.48	31.0	20.6	102
2		698	578	90	2.36	43.8	36.9	96	2		912	755	103	3.52	43.8	36.9	99
3		911	813	78	2.34	50.2	45.6	93	3		1190	1062	89	3.49	50.2	45.6	96
4		1088	1010	66	2.26	52.9	49.9	92	4		1421	1319	76	3.36	52.9	49.9	95
5		1161	1092	60	2.19	52.4	50.2	92	5		1516	1427	68	3.26	52.4	50.2	94
6		1248	1194	49	2.01	50.3	49.0	92	6		1630	1560	56	2.99	50.3	49.0	95
1	1800	706	460	132	4.95	31.0	20.6	110	1	2000	871	568	147	6.79	31.0	20.6	111
2		1155	956	116	5.01	43.8	36.9	108	2		1425	1180	129	6.87	43.8	36.9	109
3		1506	1345	101	4.97	50.2	45.6	106	3		1860	1660	112	6.82	50.2	45.6	107
4		1799	1670	86	4.79	52.9	49.9	106	4		2221	2062	95	6.57	52.9	49.9	107
5		1918	1806	77	4.64	52.4	50.2	105	5		2368	2229	86	6.36	52.4	50.2	106
6		2063	1974	63	4.26	50.3	49.0	105	6		2547	2437	70	5.84	50.3	49.0	107
1	2200	1054	687	161	9.03	31.0	20.6	112	1	2400	1254	817	176	11.72	31.0	20.6	114
2		1725	1428	141	9.15	43.8	36.9	110	2		2053	1699	154	11.87	43.8	36.9	112
3		2250	2008	123	9.08	50.2	45.6	108	3		2678	2390	134	11.78	50.2	45.6	110
4		2687	2494	105	8.74	52.9	49.9	108	4		3198	2969	114	11.34	52.9	49.9	109
5		2866	2697	94	8.47	52.4	50.2	107	5		3411	3210	103	10.99	52.4	50.2	109
6		3082	2949	77	7.77	50.3	49.0	108	6		3668	3509	84	10.08	50.3	49.0	109
1	2600	1472	959	191	14.90	31.0	20.6	115	1	2800	1708	1112	206	18.61	31.0	20.6	117
2		2409	1994	167	15.09	43.8	36.9	113	2		2794	2313	180	18.85	43.8	36.9	114
3		3143	2805	146	14.98	50.2	45.6	111	3		3645	3253	157	18.71	50.2	45.6	112
4		3753	3484	124	14.42	52.9	49.9	110	4		4353	4041	133	18.01	52.9	49.9	112
5		4003	3767	111	13.97	52.4	50.2	110	5		4642	4369	120	17.45	52.4	50.2	111
6		4304	4119	91	12.82	50.3	49.0	110	6		4992	4777	98	16.01	50.3	49.0	111
1	3000	1960	1277	220	22.89	31.0	20.6	118	1	3200	2230	1453	235	27.78	31.0	20.6	120
2		3207	2655	193	23.18	43.8	36.9	116	2		3649	3021	206	28.13	43.8	36.9	117
3		4184	3735	168	23.01	50.2	45.6	113	3		4761	4249	179	27.92	50.2	45.6	115
4		4997	4638	143	22.15	52.9	49.9	113	4		5685	5277	152	26.88	52.9	49.9	114
5		5329	5016	129	21.47	52.4	50.2	112	5		6063	5707	137	26.05	52.4	50.2	113
6		5731	5483	105	19.69	50.3	49.0	112	6		6520	6239	112	23.90	50.3	49.0	113

- The A-Weighted sound rating shown have been calculated per AMCA Standard 301
- Value shown are for inlet LwiA sound power levels for installation type B - free inlet, ducted outlet.
- Performance certified is for installation type B - free inlet, ducted outlet.
- Performance ratings do not include the effects of apputenances(accessories), Power rating Kw does not include transmission losses



*상기 자료는 품질관리를 위해 예고없이 변경될 수 있습니다.

벨트 구동형 터보팬

Belt driven Turbo Fan

성능곡선

Dae-Ryun Ind. Co., LTD

DR-TFS Series

Model : DR-TF#4.5SS

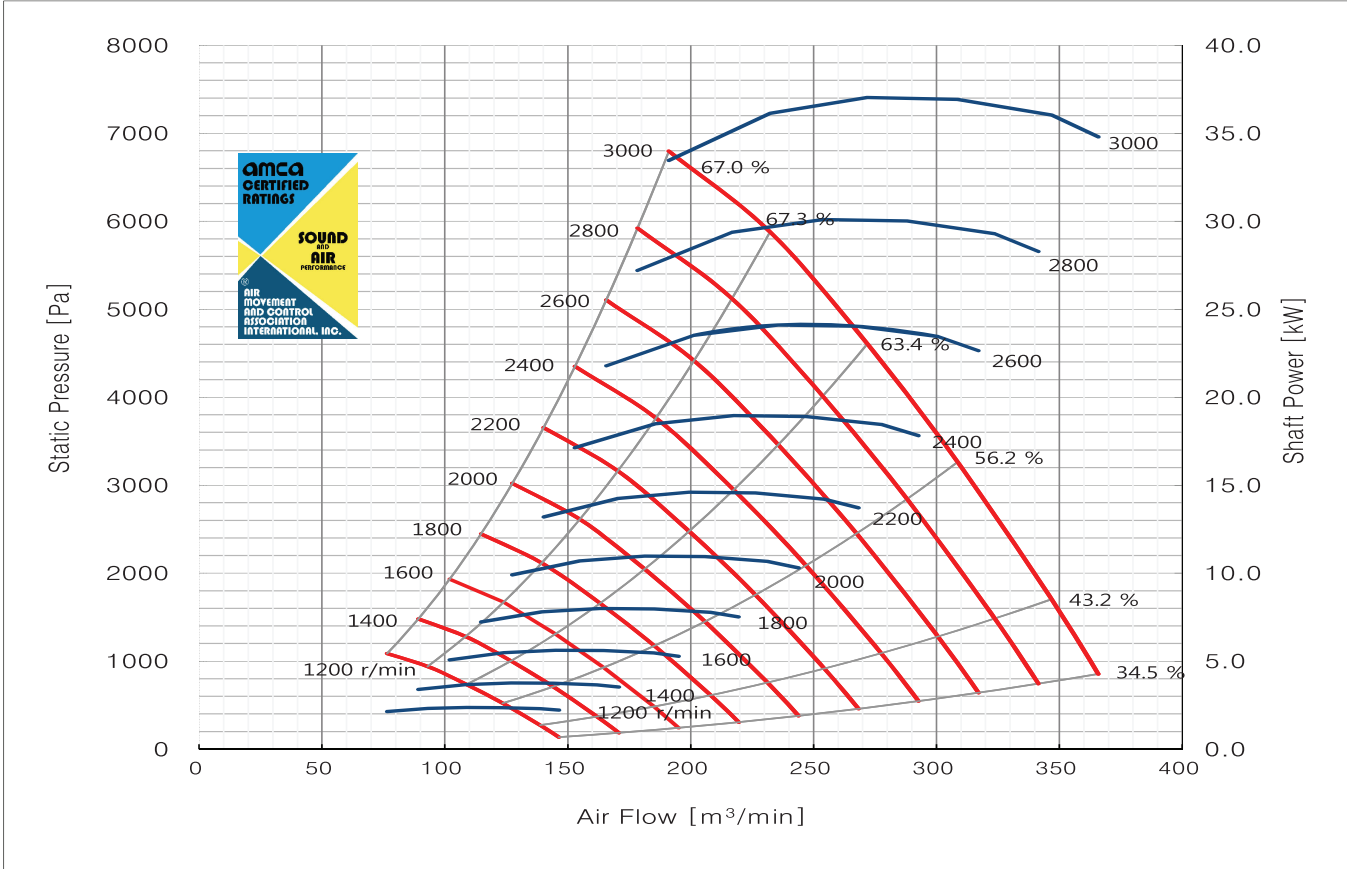
Wheel DIA. : 684 mm

Outlet Dim : 315 X 450 mm

Outlet Area : 0.142 m²

Det.	N [r/min]	Pt [Pa]	Ps [Pa]	Q m ³ /min	H [kW]	EtaT [%]	EtaS [%]	LwiA [dB]	Det.	N [r/min]	Pt [Pa]	Ps [Pa]	Q m ³ /min	H [kW]	EtaT [%]	EtaS [%]	LwiA [dB]
1	1200	320	137	146	2.23	34.5	15.0	100	1	1400	436	186	170	3.54	34.5	15.0	103
2		440	273	138	2.31	43.2	27.3	99	2		598	371	161	3.67	43.2	27.3	102
3		659	522	123	2.37	56.2	45.3	96	3		897	711	144	3.76	56.2	45.3	99
4		849	737	108	2.37	63.4	56.1	93	4		1155	1003	126	3.77	63.4	56.1	96
5		1029	941	92	2.32	67.3	62.6	91	5		1401	1280	108	3.68	67.3	62.6	95
6		1155	1088	76	2.15	67.0	64.2	93	6		1572	1480	89	3.41	67.0	64.2	96
1	1600	570	243	195	5.28	34.5	15.0	106	1	1800	721	308	219	7.52	34.5	15.0	114
2		781	485	184	5.47	43.2	27.3	105	2		989	614	208	7.79	43.2	27.3	112
3		1172	928	164	5.61	56.2	45.3	102	3		1483	1175	185	7.98	56.2	45.3	108
4		1509	1310	144	5.62	63.4	56.1	99	4		1909	1658	163	8.00	63.4	56.1	105
5		1830	1672	123	5.49	67.3	62.6	98	5		2316	2117	139	7.81	67.3	62.6	104
6		2054	1933	101	5.08	67.0	64.2	99	6		2599	2447	114	7.23	67.0	64.2	106
1	2000	890	380	243	10.31	34.5	15.0	115	1	2200	1077	460	268	13.73	34.5	15.0	117
2		1221	758	231	10.68	43.2	27.3	114	2		1477	917	254	14.22	43.2	27.3	116
3		1831	1450	205	10.95	56.2	45.3	110	3		2215	1755	226	14.57	56.2	45.3	112
4		2357	2047	181	10.98	63.4	56.1	107	4		2852	2477	199	14.61	63.4	56.1	109
5		2859	2613	154	10.71	67.3	62.6	106	5		3459	3162	170	14.26	67.3	62.6	108
6		3209	3021	127	9.92	67.0	64.2	108	6		3883	3655	140	13.20	67.0	64.2	110
1	2400	1282	547	292	17.82	34.5	15.0	118	1	2600	1505	642	317	22.65	34.5	15.0	120
2		1758	1091	277	18.46	43.2	27.3	117	2		2063	1280	300	23.46	43.2	27.3	119
3		2636	2089	246	18.91	56.2	45.3	114	3		3094	2451	267	24.04	56.2	45.3	116
4		3395	2948	217	18.96	63.4	56.1	111	4		3984	3460	235	24.11	63.4	56.1	113
5		4117	3763	185	18.51	67.3	62.6	110	5		4831	4416	201	23.53	67.3	62.6	112
6		4621	4350	152	17.14	67.0	64.2	112	6		5423	5105	165	21.79	67.0	64.2	113
1	2800	1745	745	341	28.29	34.5	15.0	121	1	3000	2003	855	365	34.80	34.5	15.0	122
2		2393	1485	323	29.30	43.2	27.3	120	2		2747	1705	346	36.04	43.2	27.3	122
3		3588	2843	288	30.03	56.2	45.3	118	3		4119	3264	308	36.93	56.2	45.3	119
4		4620	4012	253	30.11	63.4	56.1	114	4		5304	4606	271	37.03	63.4	56.1	116
5		5603	5122	216	29.38	67.3	62.6	113	5		6432	5880	232	36.14	67.3	62.6	115
6		6289	5921	178	27.21	67.0	64.2	115	6		7220	6797	191	33.47	67.0	64.2	116

- The A-Weighted sound rating shown have been calculated per AMCA Standard 301
- Value shown are for inlet LwiA sound power levels for installation type B - free inlet, ducted outlet.
- Performance certified is for installation type B - free inlet, ducted outlet.
- Performance ratings do not include the effects of apputenances(accessories), Power rating Kw does not include transmission losses



*상기 자료는 품질관리를 위해 예고없이 변경될 수 있습니다.



벨트 구동형 터보팬

Belt driven Turbo Fan

성능곡선

Dae-Ryun Ind. Co., LTD

DR-TFS Series

Model : DR-TF#5SS

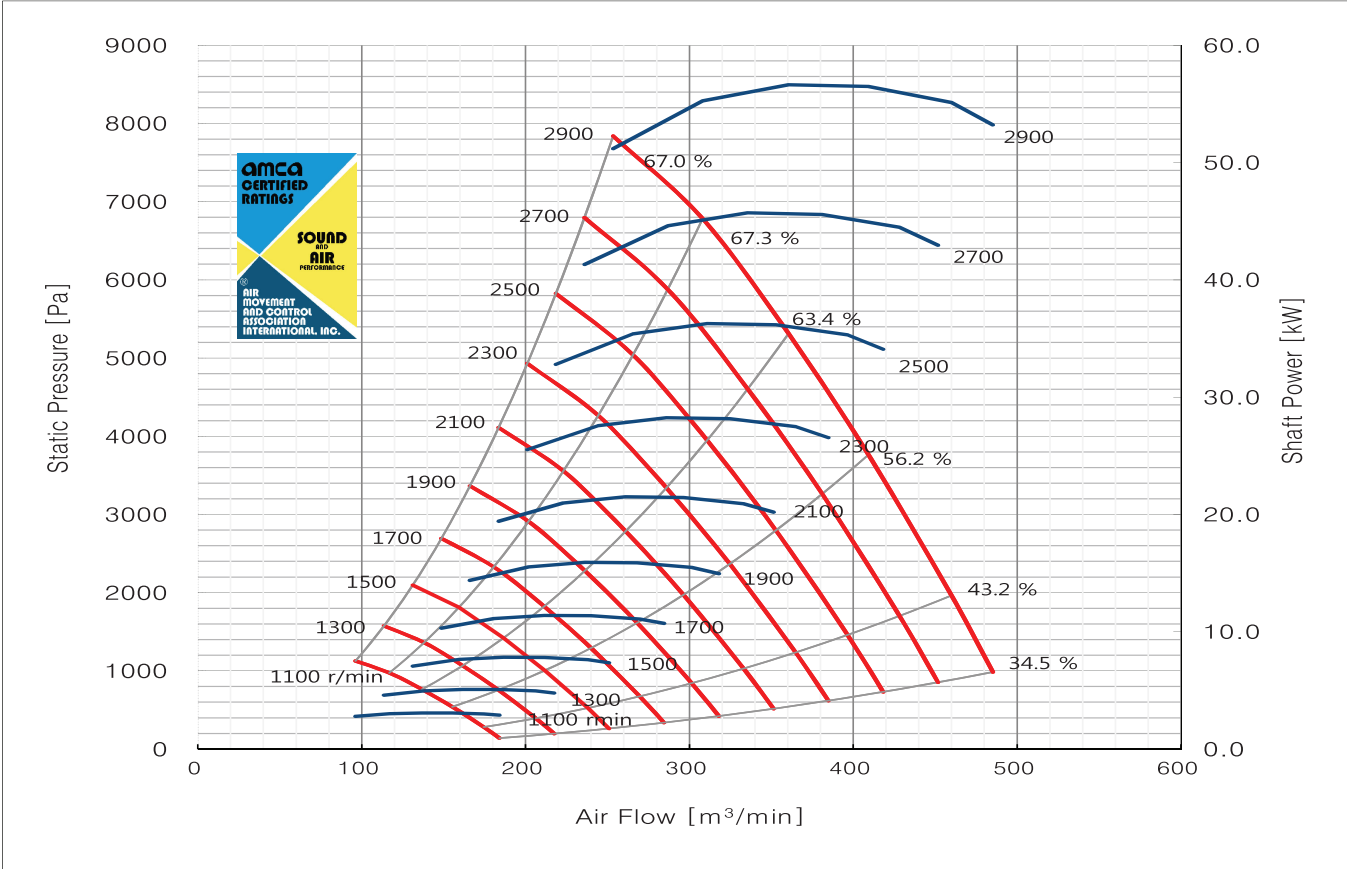
Wheel DIA. : 760 mm

Outlet Dim : 350 X 500 mm

Outlet Area : 0.175 m²

Det.	N [r/min]	Pt [Pa]	Ps [Pa]	Q m ³ /min	H [kW]	EtaT [%]	EtaS [%]	LwiA [dB]	Det.	N [r/min]	Pt [Pa]	Ps [Pa]	Q m ³ /min	H [kW]	EtaT [%]	EtaS [%]	LwiA [dB]
1	1100	332	142	184	2.91	34.5	15.0	98	1	1300	464	198	217	4.80	34.5	15.0	101
2		456	283	174	3.01	43.2	27.3	96	2		637	395	206	4.97	43.2	27.3	100
3		684	542	155	3.09	56.2	45.3	92	3		955	757	183	5.09	56.2	45.3	96
4		880	765	136	3.10	63.4	56.1	90	4		1230	1068	161	5.11	63.4	56.1	93
5		1068	976	116	3.02	67.3	62.6	92	5		1491	1363	138	4.98	67.3	62.6	96
6		1198	1128	96	2.80	67.0	64.2	96	6		1674	1576	113	4.62	67.0	64.2	99
1	1500	618	264	250	7.37	34.5	15.0	104	1	1700	794	339	284	10.73	34.5	15.0	107
2		848	526	237	7.63	43.2	27.3	103	2		1089	676	269	11.11	43.2	27.3	106
3		1271	1007	211	7.82	56.2	45.3	99	3		1633	1294	239	11.38	56.2	45.3	102
4		1637	1422	186	7.84	63.4	56.1	97	4		2103	1826	211	11.42	63.4	56.1	100
5		1985	1815	159	7.65	67.3	62.6	99	5		2550	2331	180	11.14	67.3	62.6	101
6		2228	2098	131	7.09	67.0	64.2	102	6		2862	2695	148	10.32	67.0	64.2	104
1	1900	992	423	317	14.97	34.5	15.0	114	1	2100	1212	517	351	20.22	34.5	15.0	116
2		1360	844	301	15.51	43.2	27.3	112	2		1662	1031	333	20.94	43.2	27.3	114
3		2040	1616	268	15.89	56.2	45.3	107	3		2492	1974	296	21.46	56.2	45.3	110
4		2627	2281	236	15.94	63.4	56.1	105	4		3209	2786	260	21.51	63.4	56.1	107
5		3185	2912	201	15.55	67.3	62.6	109	5		3891	3557	223	20.99	67.3	62.6	111
6		3575	3366	166	14.40	67.0	64.2	115	6		4368	4112	183	19.44	67.0	64.2	116
1	2300	1454	620	384	26.56	34.5	15.0	117	1	2500	1717	733	418	34.10	34.5	15.0	119
2		1993	1237	364	27.51	43.2	27.3	116	2		2355	1461	396	35.32	43.2	27.3	117
3		2989	2368	324	28.19	56.2	45.3	111	3		3531	2798	352	36.20	56.2	45.3	113
4		3849	3342	285	28.26	63.4	56.1	109	4		4547	3949	310	36.30	63.4	56.1	111
5		4668	4267	244	27.58	67.3	62.6	113	5		5515	5041	265	35.42	67.3	62.6	114
6		5239	4932	200	25.54	67.0	64.2	118	6		6190	5827	218	32.80	67.0	64.2	119
1	2700	2003	855	451	42.96	34.5	15.0	120	1	2900	2311	986	485	53.23	34.5	15.0	122
2		2747	1705	428	44.49	43.2	27.3	119	2		3169	1967	459	55.13	43.2	27.3	120
3		4119	3264	380	45.59	56.2	45.3	115	3		4752	3765	409	56.49	56.2	45.3	117
4		5304	4606	335	45.72	63.4	56.1	113	4		6119	5314	360	56.65	63.4	56.1	114
5		6432	5880	286	44.61	67.3	62.6	116	5		7420	6783	307	55.28	67.3	62.6	117
6		7220	6797	235	41.32	67.0	64.2	120	6		8329	7841	253	51.20	67.0	64.2	121

- The A-Weighted sound rating shown have been calculated per AMCA Standard 301
- Value shown are for inlet LwiA sound power levels for installation type B - free inlet, ducted outlet.
- Performance certified is for installation type B - free inlet, ducted outlet.
- Performance ratings do not include the effects of apputenances(accessories), Power rating Kw does not include transmission losses



*상기 자료는 품질관리를 위해 예고없이 변경될 수 있습니다.