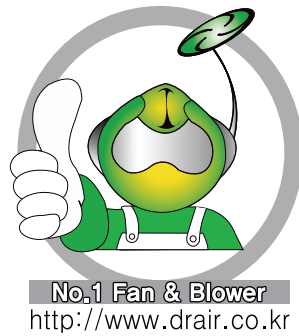


본 제품의 규격은 품질개선을 위하여 예고없이 변경될 수 있으므로 제품구입시 문의 바랍니다.  
Since specifications of products can be changed without inform in order to improve the quality, please call us to confirm them.



No.1 Fan & Blower  
<http://www.drair.co.kr>

자연과 환경, 그리고 사람을 생각하는 브랜드

# DR 환기송풍기 CENTRIFUGAL FAN DR-AFS series

May 2016 (Rev.00)



 **대륜산업주식회사**  
Dae Ryun Ind. Co., Ltd.

본사/공장 565-902 전라북도 완주군 봉동읍 완주산단7로115 (둔산리 926-3번지)  
TEL (063)262-5100 FAX (063)262-5107  
서울사업소 445-862 경기도 화성시 마도면 마도로 608 (청원리 32-1번지)  
TEL (031)8047-5161 FAX (031)8047-5163  
고객서비스센터 1644-5153



 **대륜산업주식회사**  
Dae Ryun Ind. Co., Ltd.

## INDEX

1. Index, AMCA Seal Information	----- 2 PAGE
2. Product Characteristic	----- 3 PAGE
3. Overall Dimensions	----- 4 PAGE
4. Performance Curves and Sound Data	----- 5 ~ 11 PAGE



대륜산업(주)가 획득한 DR-AFS SERIES AIRFOIL FAN의 AMCA seal에 대한 내용입니다. 등급표시는 AMCA 211과 AMCA 311에 의거 테스트 및 절차에 따른 것이며, AMCA 보증프로그램의 요구사항과 일치합니다.

"Dae-Ryun Ind. Co., Ltd." certifies that the "DR-AFS" Airfoil Fans shown herein are licensed to bear the AMCA Seal. The ratings shown are based on tests and procedures performed in accordance with AMCA Publication 211 and AMCA Publication 311 and comply with the requirements of the AMCA Certified Ratings Program."



## 형상

IMPELLER AIRFOIL TYPE (역형)

## 특징

- BLADE 단면은 역형을 채용했으므로 익근채내의 공기난류가 적어 소음이 적고 정숙한 운전이 가능
- 고효율이므로 MOTOR 용량이 적어 운전비가 경제적임
- LIMITE LOAD 특성 (일정 회전수 아래에서는 소요동력이 최대점이 있으므로 그 점에서 풍량이 다시 증가해도 소요동력은 증가하지 않고 오히려 감소)이 있으므로 과부하율이 적음
- 50~200mmAq의 비교적 높은 정압으로 설계되었으며 100~150mmAq의 범위에서 최대의 기능을 발휘함

## 용도

- 각종 건축물 송 · 배풍용 보일러 압입, 공기 조화장치, 건조장치 등 일반 산업용으로 널리 사용됨

송풍기 회전방향 (흡입구 측 기준으로 바라본 토출구 위치)

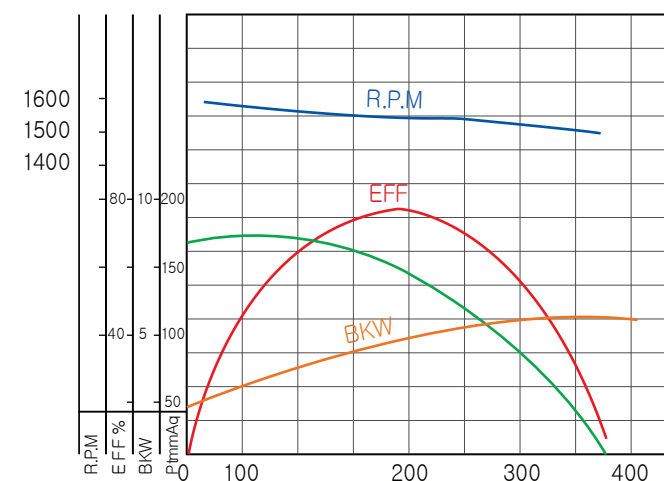
A	B	C	D	E	F	G	H
1-W	2-Z	3-W	4-Z	5-W	5-Z	6-W	6-Z

## 송풍기의 모델명 읽는 방법 예시

모 델 명 : DR - AF #3 S D

DR - AF : 베어링 지지방법 (D: 양지형 / S: 편지형)  
 #3 : Single Suction (D: 양흡입형 / S: 편흡입형)  
 S : Impeller의 외경등을 6inch로 나눈값 (Fan No.)  
 D : Fan 기종 (Airfoil Fan)  
 : 제작회사 표기 (대륜산업의 약자)

## AIRFOIL FAN의 특징



- 압 력곡선은 풍량 20% 상태에서 최고가 되며 이 풍량이하가 서어징 영역이므로 곡선은 안정된 상태를 유지함
- 동 력곡선은 최고 효율점 부근에서 가장 높아진 후 감소하는 리미트 로드 특성이 있음
- 효 율곡선은 극히 좋으며 80%를 상회하기도 하고 운전이 가장 정숙함

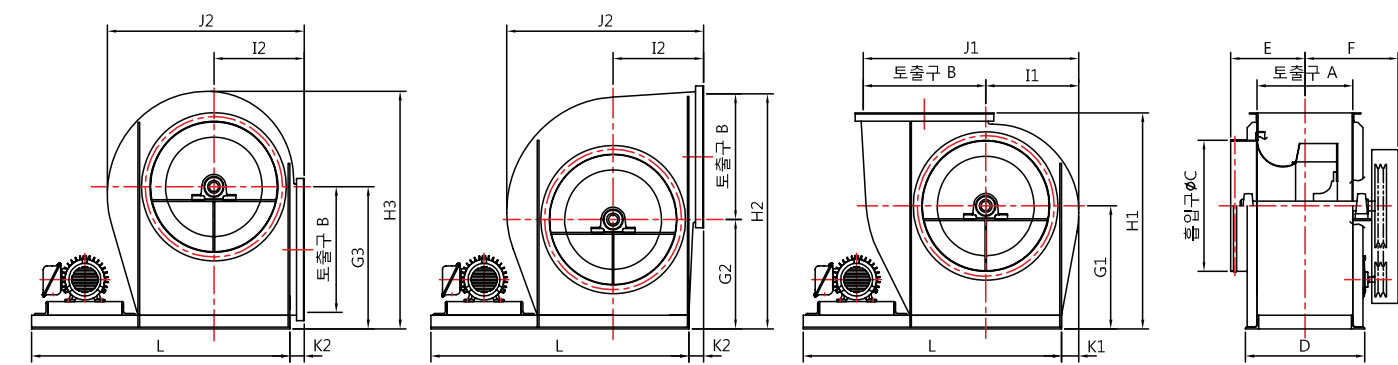


벨트 구동형 에어포일팬 (편흡입)

Belt driven Airfoil Fan

▶ 편흡입 에어포일팬 규격표

외형도



규격표

MODEL	토출구		흡입구	FAN 베이스 폭	FAN 폭		센터높이			FAN 높이			FAN 상부 길이				FAN 베이스 길이 (모터용량에 따라 길이가 변경됨)		
	A	B	C	D	E	F	G1	G2	G3	H1	H2	H3	I1	I2	J1	J2	K1	K2	L
DR-AF#2SD	240	305	320	328	210	290	310	280	355	550	585	595	240	240	545	510	40	40	860
DR-AF#2.5SD	300	380	400	388	240	320	385	345	440	660	725	735	295	275	675	610	45	25	940
DR-AF#3SD	360	460	480	448	280	390	450	400	520	790	860	870	350	340	810	740	65	55	1070
DR-AF#3.5SD	420	530	560	508	310	420	520	460	590	910	990	1000	410	390	940	860	75	55	1170
DR-AF#4SD	480	610	640	560	340	470	585	515	670	1030	1125	1135	465	445	1075	980	85	65	1360
DR-AF#4.5SD	540	690	720	620	370	510	680	600	775	1175	1290	1300	525	495	1215	1100	95	65	1460
DR-AF#5SD	600	760	800	680	400	550	745	655	845	1295	1415	1425	580	550	1340	1220	100	70	1610

\*상기 자료는 품질관리를 위해 예고없이 변경될 수 있습니다.



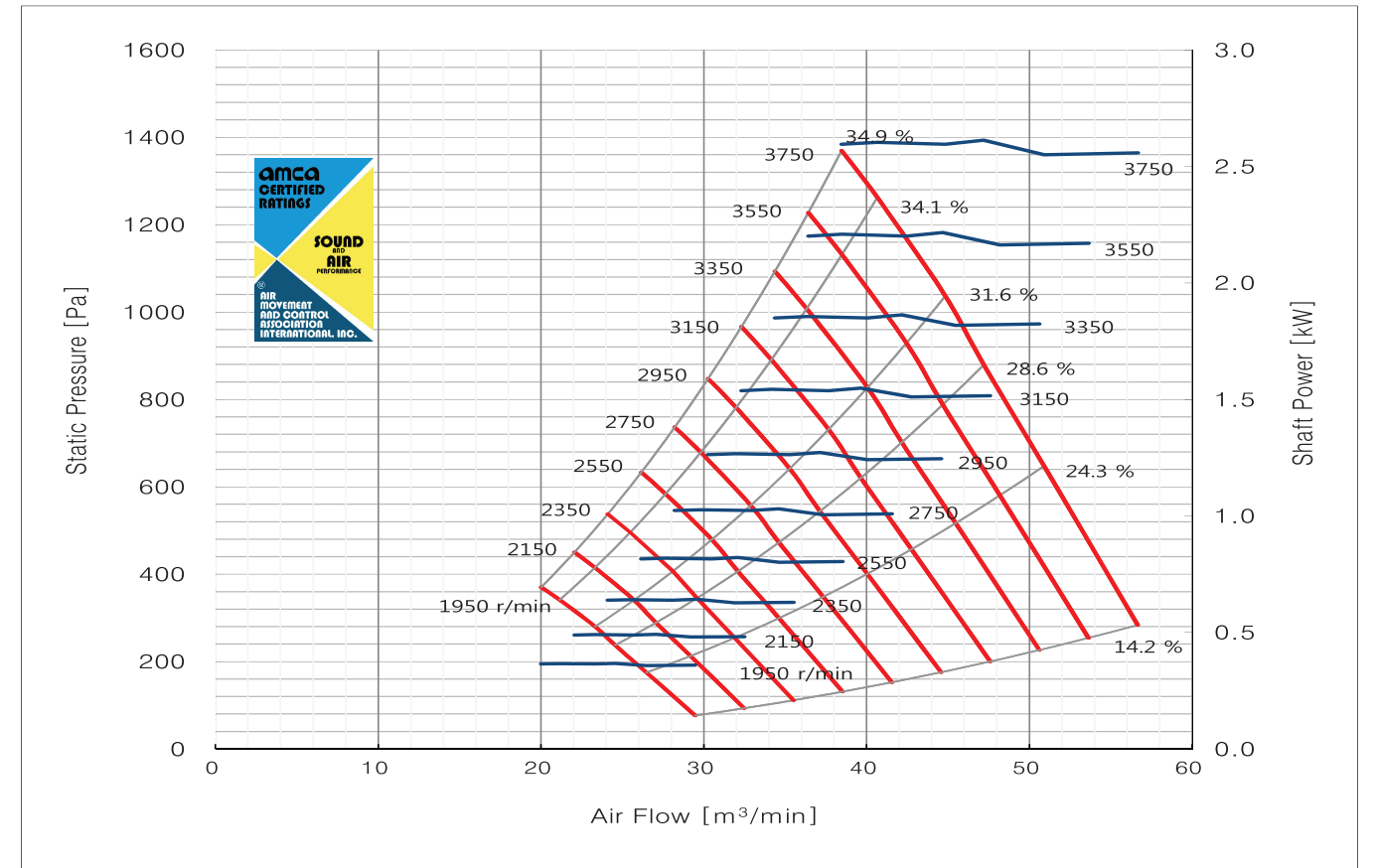
벨트 구동형 에어포일팬 (편흡입)

Belt driven Airfoil Fan

성능곡선

Dae-Ryun Ind. Co., LTD									DR-AFS Series									Model : DR-AF#2SD		
Wheel DIA. : 304 mm									Outlet Dim : 240 X 305 mm									Outlet Area : 0.073 m <sup>2</sup>		
Det.	N	Pt	Ps	Q	H	EtaT	EtaS	LwIA	Det.	N	Pt	Ps	Q	H	EtaT	EtaS	LwIA			
[r/min]	[Pa]	[Pa]	m <sup>3</sup> /min	[kW]	[%]	[%]	[dB]		[r/min]	[Pa]	[Pa]	m <sup>3</sup> /min	[kW]	[%]	[%]	[dB]				
1	1950	106	77	29	0.36	14.2	10.5	90	1	2150	128	93	32	0.49	14.2	10.5	92			
2		201	175	26	0.36	24.3	21.6	91	2		244	213	29	0.49	24.3	21.6	93			
3		261	238	24	0.37	28.6	26.5	91	3		317	289	27	0.50	28.6	26.5	92			
4		302	280	23	0.37	31.6	29.8	91	4		368	341	25	0.49	31.6	29.8	92			
5		362	341	21	0.37	34.1	32.8	91	5		440	415	23	0.50	34.1	32.8	92			
6		389	370	19	0.37	34.9	33.8	91	6		473	450	22	0.49	34.9	33.8	92			
1	2350	153	111	35	0.63	14.2	10.5	94	1	2550	181	131	38	0.81	14.2	10.5	95			
2		291	254	31	0.63	24.3	21.6	94	2		343	300	34	0.81	24.3	21.6	96			
3		379	345	29	0.65	28.6	26.5	94	3		446	407	32	0.83	28.6	26.5	95			
4		439	407	28	0.64	31.6	29.8	94	4		517	479	30	0.82	31.6	29.8	95			
5		525	496	25	0.65	34.1	32.8	94	5		619	584	27	0.82	34.1	32.8	95			
6		566	538	24	0.64	34.9	33.8	94	6		666	633	26	0.82	34.9	33.8	95			
1	2750	210	153	41	1.01	14.2	10.5	97	1	2950	242	176	44	1.25	14.2	10.5	99			
2		399	348	37	1.01	24.3	21.6	97	2		459	401	40	1.25	24.3	21.6	98			
3		519	473	34	1.04	28.6	26.5	97	3		598	544	37	1.28	28.6	26.5	98			
4		602	558	32	1.03	31.6	29.8	97	4		692	642	35	1.27	31.6	29.8	98			
5		719	679	29	1.03	34.1	32.8	96	5		828	782	31	1.27	34.1	32.8	98			
6		775	737	28	1.03	34.9	33.8	96	6		891	848	30	1.27	34.9	33.8	98			
1	3150	276	200	47	1.52	14.2	10.5	100	1	3350	312	227	50	1.83	14.2	10.5	101			
2		523	457	42	1.52	24.3	21.6	100	2		592	517	45	1.82	24.3	21.6	101			
3		681	620	39	1.55	28.6	26.5	99	3		771	702	42	1.87	28.6	26.5	101			
4		789	732	37	1.54	31.6	29.8	99	4		893	827	40	1.86	31.6	29.8	101			
5		944	891	34	1.55	34.1	32.8	99	5		1068	1008	36	1.86	34.1	32.8	100			
6		1016	966	32	1.54	34.9	33.8	99	6		1149	1093	34	1.86	34.9	33.8	100			
1	3550	350	254	53	2.18	14.2	10.5	103	1	3750	391	284	56	2.56	14.2	10.5	108			
2		665	581	48	2.17	24.3	21.6	102	2		742	648	50	2.55	24.3	21.6	110			
3		865	788	44	2.22	28.6	26.5	102	3		966	879	47	2.62	28.6	26.5	110			
4		1002	929	42	2.21	31.6	29.8	102	4		1118	1037	44	2.60	31.6	29.8	110			
5		1199	1132	38	2.21	34.1	32.8	101	5		1338	1263	40	2.61	34.1	32.8	110			
6		1291	1227	36	2.21	34.9	33.8	101	6		1440	1370	38	2.60	34.9	33.8	109			

- The A-Weighted sound rating shown have been calculated per AMCA Standard 301.  
- Value shown are for inlet LwIA sound power levels for installation type B - free inlet, ducted outlet.  
- Performance certified is for installation type B - free inlet, ducted outlet.  
- Performance ratings do not include the effects of apputenances(accessories), Power rating Kw does not include transmission losses



\*상기 자료는 품질관리를 위해 예고없이 변경될 수 있습니다.

벨트 구동형 에어포일팬 (편흡입)

Belt driven Airfoil Fan

성능곡선

Dae-Ryun Ind. Co., LTD

DR-AFS Series

Model : DR-AF#2.5SD

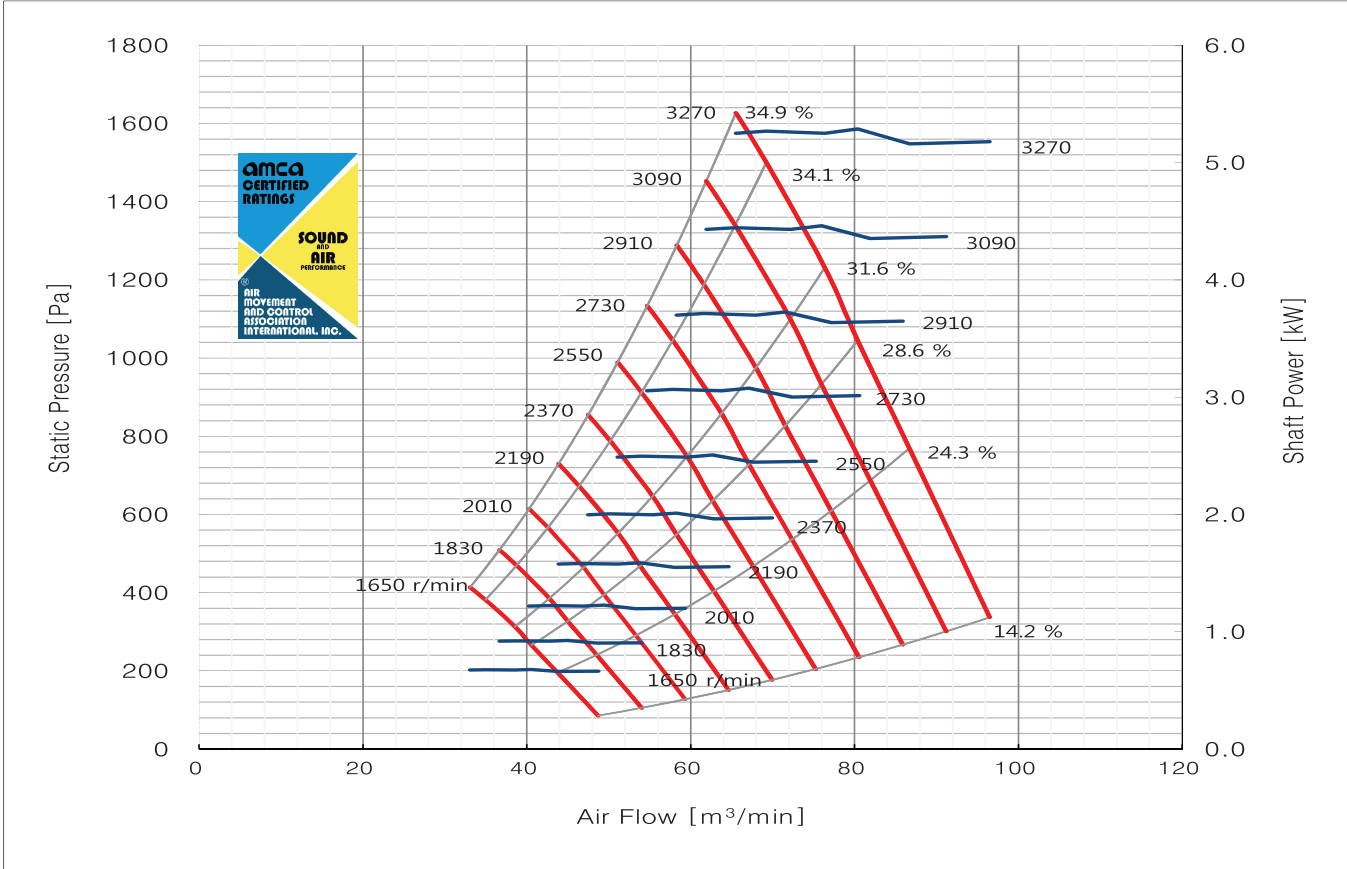
Wheel DIA. : 380 mm

Outlet Dim : 300 X 380 mm

Outlet Area : 0.114 m<sup>2</sup>

Det.	N [r/min]	Pt [Pa]	Ps [Pa]	Q m <sup>3</sup> /min	H [kW]	EtaT [%]	EtaS [%]	LwiA [dB]	Det.	N [r/min]	Pt [Pa]	Ps [Pa]	Q m <sup>3</sup> /min	H [kW]	EtaT [%]	EtaS [%]	LwiA [dB]
1	1650	118	86	49	0.67	14.2	10.5	91	1	1830	145	106	53	0.91	14.2	10.5	95
2		224	196	43	0.67	24.3	21.6	90	2		276	241	48	0.91	24.3	21.6	97
3		292	266	40	0.68	28.6	26.5	90	3		359	327	44	0.93	28.6	26.5	97
4		338	314	38	0.68	31.6	29.8	90	4		416	386	42	0.93	31.6	29.8	97
5		405	382	34	0.68	34.1	32.8	90	5		498	470	38	0.93	34.1	32.8	96
6		436	414	33	0.68	34.9	33.8	89	6		536	510	36	0.93	34.9	33.8	96
1	2010	175	127	59	1.21	14.2	10.5	97	1	2190	208	151	64	1.56	14.2	10.5	99
2		333	291	53	1.20	24.3	21.6	98	2		395	345	58	1.55	24.3	21.6	100
3		433	395	49	1.23	28.6	26.5	98	3		515	469	53	1.59	28.6	26.5	99
4		502	465	46	1.22	31.6	29.8	98	4		596	553	51	1.58	31.6	29.8	99
5		600	567	42	1.23	34.1	32.8	98	5		713	673	46	1.59	34.1	32.8	99
6		647	615	40	1.22	34.9	33.8	98	6		768	730	43	1.58	34.9	33.8	99
1	2370	244	177	69	1.98	14.2	10.5	101	1	2550	282	205	75	2.46	14.2	10.5	102
2		463	404	62	1.97	24.3	21.6	101	2		536	468	67	2.45	24.3	21.6	102
3		603	549	58	2.02	28.6	26.5	101	3		698	635	62	2.51	28.6	26.5	102
4		698	647	55	2.00	31.6	29.8	101	4		808	749	59	2.50	31.6	29.8	102
5		835	788	50	2.01	34.1	32.8	101	5		966	912	53	2.50	34.1	32.8	102
6		899	855	47	2.00	34.9	33.8	100	6		1041	990	51	2.50	34.9	33.8	102
1	2730	324	235	80	3.02	14.2	10.5	104	1	2910	368	267	85	3.65	14.2	10.5	105
2		614	536	72	3.01	24.3	21.6	104	2		698	610	77	3.64	24.3	21.6	105
3		800	728	67	3.08	28.6	26.5	103	3		909	827	71	3.73	28.6	26.5	105
4		926	859	63	3.06	31.6	29.8	103	4		1052	976	67	3.71	31.6	29.8	105
5		1108	1046	57	3.07	34.1	32.8	103	5		1259	1188	61	3.72	34.1	32.8	104
6		1193	1134	54	3.06	34.9	33.8	103	6		1355	1289	58	3.71	34.9	33.8	104
1	3090	415	301	91	4.37	14.2	10.5	106	1	3270	464	337	96	5.18	14.2	10.5	108
2		787	687	81	4.36	24.3	21.6	106	2		881	770	86	5.16	24.3	21.6	107
3		1024	933	75	4.47	28.6	26.5	106	3		1147	1045	80	5.29	28.6	26.5	107
4		1187	1100	72	4.44	31.6	29.8	106	4		1329	1232	76	5.26	31.6	29.8	107
5		1419	1340	65	4.45	34.1	32.8	105	5		1589	1500	69	5.27	34.1	32.8	106
6		1528	1453	61	4.44	34.9	33.8	105	6		1711	1627	65	5.26	34.9	33.8	106

- The A-Weighted sound rating shown have been calculated per AMCA Standard 301
- Value shown are for inlet LwiA sound power levels for installation type B - free inlet, ducted outlet.
- Performance certified is for installation type B - free inlet, ducted outlet.
- Performance ratings do not include the effects of apputenances(accessories), Power rating Kw does not include transmission losses



\*상기 자료는 품질관리를 위해 예고없이 변경될 수 있습니다.



벨트 구동형 에어포일팬 (편흡입)

Belt driven Airfoil Fan

성능곡선

Dae-Ryun Ind. Co., LTD

DR-AFS Series

Model : DR-AF#3SD

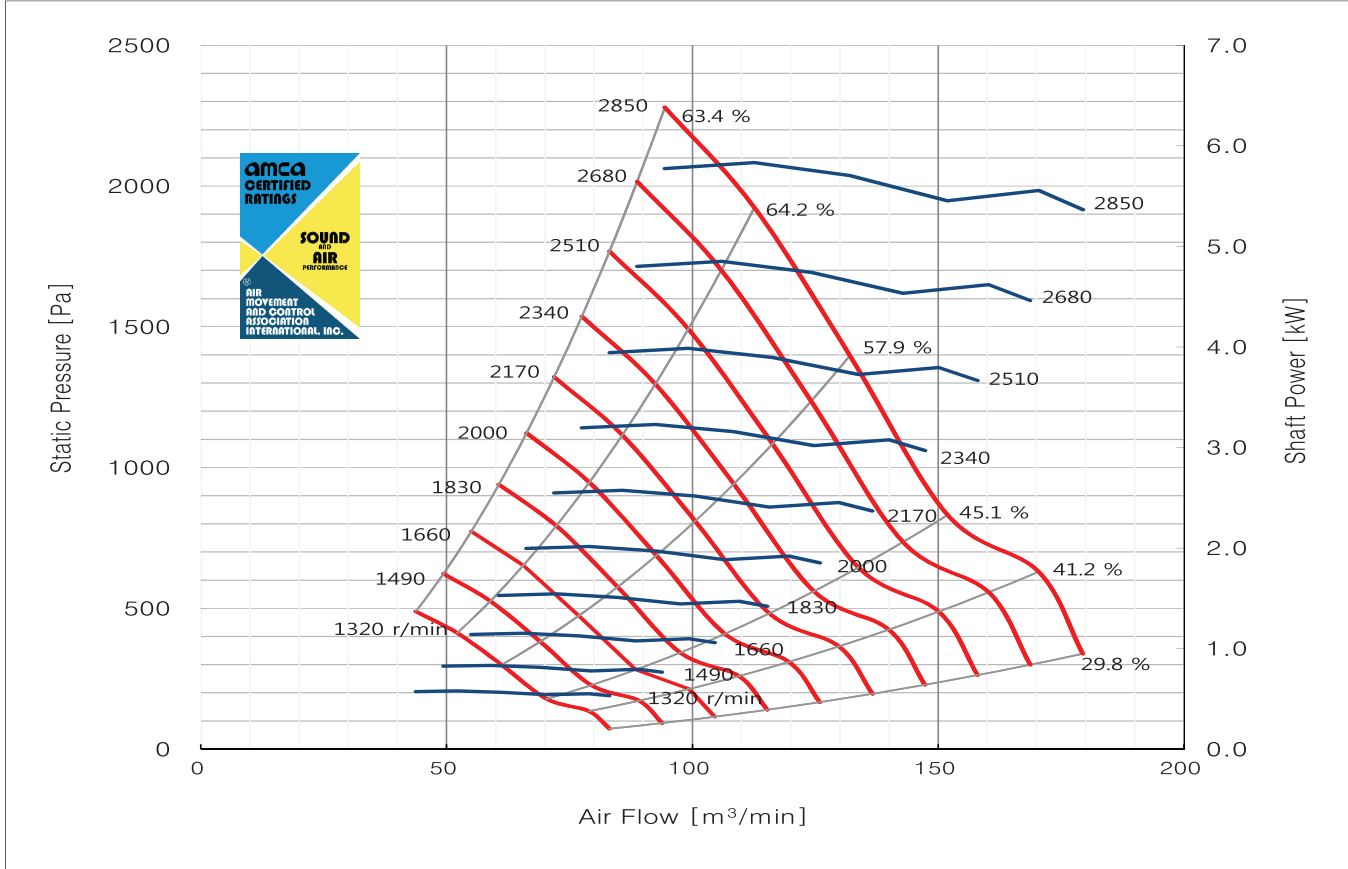
Wheel DIA. : 456 mm

Outlet Dim : 360 X 460 mm

Outlet Area : 0.165 m<sup>2</sup>

Det.	N [r/min]	Pt [Pa]	Ps [Pa]	Q m <sup>3</sup> /min	H [kW]	EtaT [%]	EtaS [%]	LwiA [dB]	Det.	N [r/min]	Pt [Pa]	Ps [Pa]	Q m <sup>3</sup> /min	H [kW]	EtaT [%]	EtaS [%]	LwiA [dB]
1	1320	117	73	83	0.54	29.8	18.9	86	1	1490	149	93	93	0.77	29.8	18.9	88
2		176	135	78	0.56	41.2	32.2	84	2		224	172	89	0.80	41.2	32.2	87
3		212	179	70	0.55	45.1	38.6	83	3		270	227	79	0.78	45.1	38.6	86
4		328	300	61	0.57	57.9	53.8	81	4		418	382	69	0.82	57.9	53.8	84
5		437	413	52	0.58	64.2	61.8	80	5		556	526	58	0.84	64.2	61.8	83
6		509	489	43	0.58	63.4	61.9	80	6		649	623	49	0.83	63.4	61.9	82
1	1660	184	115	104	1.07	29.8	18.9	91	1	1830	224	140	115	1.43	29.8	18.9	97
2		278	214	99	1.10	41.2	32.2	90	2		338	260	109	1.48	41.2	32.2	95
3		335	282	88	1.08	45.1	38.6	89	3		408	343	97	1.45	45.1	38.6	94
4		519	474	76	1.13	57.9	53.8	87	4		631	576	84	1.52	57.9	53.8	93
5		691	653	65	1.16	64.2	61.8	85	5		839	793	72	1.55	64.2	61.8	91
6		806	773	54	1.15	63.4	61.9	85	6		979	940	60	1.53	63.4	61.9	92
1	2000	268	167	125	1.86	29.8	18.9	99	1	2170	315	197	136	2.37	29.8	18.9	100
2		404	310	119	1.93	41.2	32.2	97	2		475	365	129	2.46	41.2	32.2	98
3		487	410	106	1.89	45.1	38.6	96	3		573	482	115	2.41	45.1	38.6	98
4		753	688	92	1.98	57.9	53.8	95	4		887	810	100	2.52	57.9	53.8	97
5		1003	948	79	2.02	64.2	61.8	93	5		1180	1116	85	2.58	64.2	61.8	95
6		1170	1123	66	2.00	63.4	61.9	94	6		1377	1322	71	2.55	63.4	61.9	95
1	2340	367	229	147	2.98	29.8	18.9	102	1	2510	422	263	157	3.67	29.8	18.9	103
2		553	425	139	3.08	41.2	32.2	100	2		636	489	150	3.80	41.2	32.2	102
3		666	561	124	3.02	45.1	38.6	100	3		767	645	133	3.73	45.1	38.6	101
4		1031	942	108	3.16	57.9	53.8	98	4		1186	1084	116	3.90	57.9	53.8	100
5		1372	1297	92	3.23	64.2	61.8	96	5		1579	1493	99	3.99	64.2	61.8	98
6		1601	1537	77	3.20	63.4	61.9	97	6		1842	1768	83	3.95	63.4	61.9	98
1	2680	481	300	168	4.47	29.8	18.9	105	1	2850	544	339	179	5.37	29.8	18.9	106
2		725	557	160	4.63	41.2	32.2	103	2		820	630	170	5.56	41.2	32.2	104
3		874	736	142	4.54	45.1	38.6	103	3		989	832	151	5.46	45.1	38.6	104
4		1352	1236	124	4.75	57.9	53.8	101	4		1529	1398	132	5.71	57.9	53.8	102
5		1800	1702	105	4.86	64.2	61.8	99	5		2036	1924	112	5.84	64.2	61.8	101
6		2100	2016	88	4.81	63.4	61.9	99	6		2375	2280	94	5.78	63.4	61.9	101

- The A-Weighted sound rating shown have been calculated per AMCA Standard 301
- Value shown are for inlet LwiA sound power levels for installation type B - free inlet, ducted outlet.
- Performance certified is for installation type B - free inlet, ducted outlet.
- Performance ratings do not include the effects of apputenances(accessories), Power rating Kw does not include transmission losses



\*상기 자료는 품질관리를 위해 예고없이 변경될 수 있습니다.



벨트 구동형 에어포일팬 (편흡입)

Belt driven Airfoil Fan

성능곡선

Dae-Ryun Ind. Co., LTD

DR-AFS Series

Model : DR-AF#3.5SD

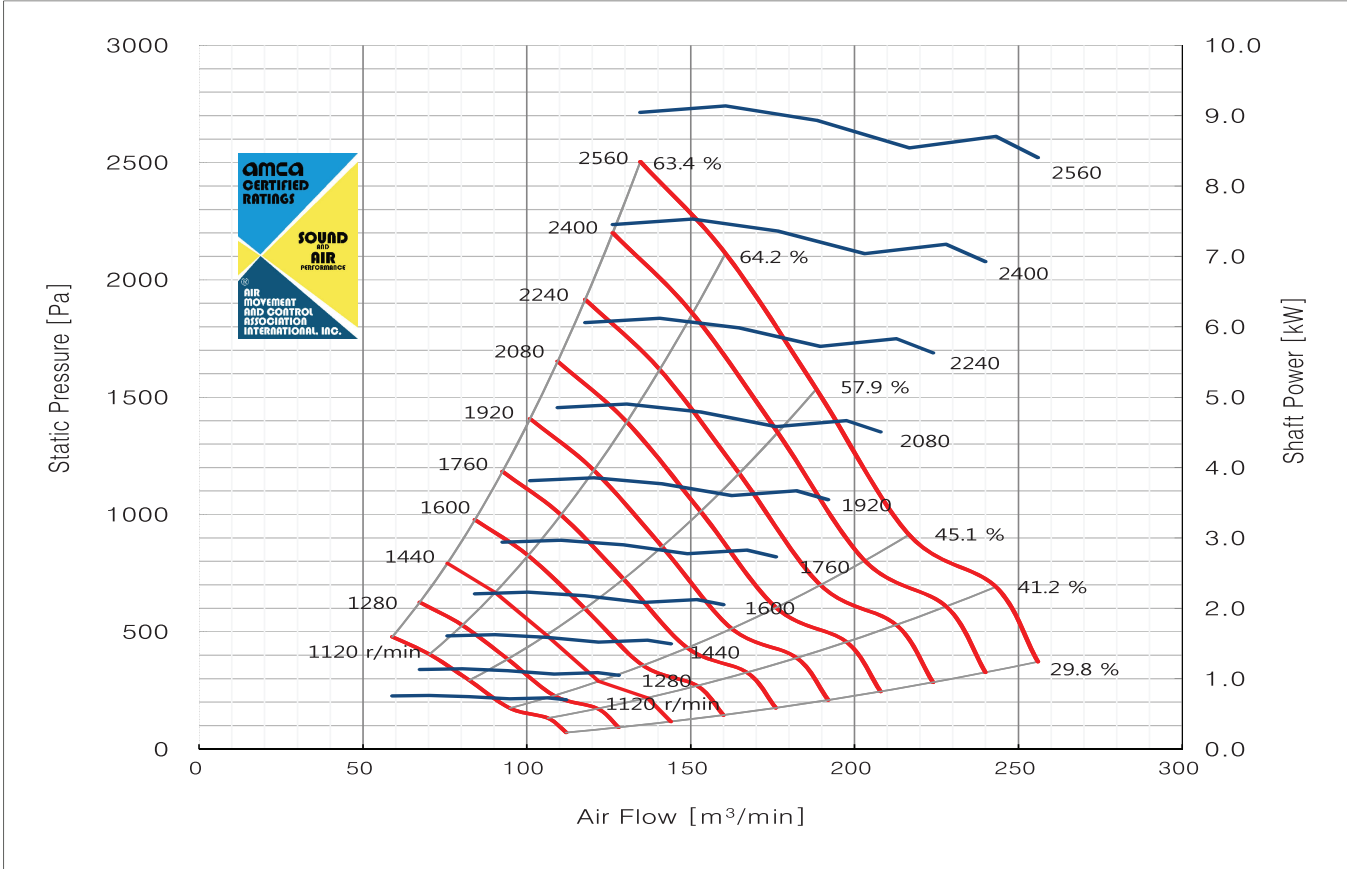
Wheel DIA. : 532 mm

Outlet Dim : 420 X 535 mm

Outlet Area : 0.224 m<sup>2</sup>

Det.	N [r/min]	Pt [Pa]	Ps [Pa]	Q m <sup>3</sup> /min	H [kW]	EtaT [%]	EtaS [%]	LwiA [dB]	Det.	N [r/min]	Pt [Pa]	Ps [Pa]	Q m <sup>3</sup> /min	H [kW]	EtaT [%]	EtaS [%]	LwiA [dB]
1	1120	114	71	112	0.71	29.8	18.9	87	1	1280	149	93	127	1.06	29.8	18.9	90
2		172	132	106	0.73	41.2	32.2	85	2		225	173	121	1.09	41.2	32.2	88
3		208	175	94	0.72	45.1	38.6	84	3		271	228	108	1.07	45.1	38.6	87
4		321	294	82	0.75	57.9	53.8	82	4		420	384	94	1.12	57.9	53.8	85
5		428	404	70	0.77	64.2	61.8	80	5		559	528	80	1.15	64.2	61.8	84
6		499	479	58	0.76	63.4	61.9	81	6		652	626	67	1.14	63.4	61.9	84
1	1440	189	118	143	1.50	29.8	18.9	92	1	1600	233	146	159	2.06	29.8	18.9	95
2		285	219	136	1.55	41.2	32.2	91	2		352	270	151	2.13	41.2	32.2	93
3		344	289	121	1.53	45.1	38.6	90	3		424	357	135	2.09	45.1	38.6	93
4		531	486	105	1.60	57.9	53.8	88	4		656	600	117	2.19	57.9	53.8	91
5		707	669	90	1.63	64.2	61.8	87	5		873	825	100	2.24	64.2	61.8	89
6		825	792	75	1.62	63.4	61.9	86	6		1019	978	84	2.21	63.4	61.9	89
1	1760	282	176	175	2.74	29.8	18.9	97	1	1920	336	210	191	3.55	29.8	18.9	102
2		426	327	167	2.83	41.2	32.2	96	2		507	389	182	3.68	41.2	32.2	100
3		513	432	148	2.78	45.1	38.6	95	3		611	514	162	3.61	45.1	38.6	100
4		794	726	129	2.91	57.9	53.8	93	4		945	864	141	3.77	57.9	53.8	99
5		1057	999	110	2.98	64.2	61.8	92	5		1258	1189	120	3.86	64.2	61.8	97
6		1233	1183	92	2.94	63.4	61.9	91	6		1467	1408	100	3.82	63.4	61.9	98
1	2080	394	246	207	4.51	29.8	18.9	104	1	2240	457	285	223	5.64	29.8	18.9	106
2		594	457	197	4.67	41.2	32.2	102	2		689	530	212	5.84	41.2	32.2	104
3		717	603	176	4.59	45.1	38.6	102	3		831	700	189	5.73	45.1	38.6	103
4		1109	1013	153	4.80	57.9	53.8	100	4		1286	1175	164	5.99	57.9	53.8	102
5		1476	1395	130	4.91	64.2	61.8	98	5		1712	1618	140	6.13	64.2	61.8	100
6		1722	1653	109	4.86	63.4	61.9	99	6		1997	1917	117	6.07	63.4	61.9	100
1	2400	525	327	239	6.93	29.8	18.9	107	1	2560	597	373	255	8.41	29.8	18.9	108
2		791	608	227	7.18	41.2	32.2	105	2		900	692	243	8.71	41.2	32.2	107
3		954	803	203	7.04	45.1	38.6	105	3		1086	914	216	8.55	45.1	38.6	106
4		1476	1349	176	7.37	57.9	53.8	103	4		1679	1535	188	8.94	57.9	53.8	105
5		1965	1857	150	7.54	64.2	61.8	102	5		2236	2113	160	9.15	64.2	61.8	103
6		2292	2201	126	7.46	63.4	61.9	102	6		2608	2504	134	9.05	63.4	61.9	103

- The A-Weighted sound rating shown have been calculated per AMCA Standard 301
- Value shown are for inlet LwiA sound power levels for installation type B - free inlet, ducted outlet.
- Performance certified is for installation type B - free inlet, ducted outlet.
- Performance ratings do not include the effects of apputenances(accessories), Power rating Kw does not include transmission losses



\*상기 자료는 품질관리를 위해 예고없이 변경될 수 있습니다.



벨트 구동형 에어포일팬 (편흡입)

Belt driven Airfoil Fan

성능곡선

Dae-Ryun Ind. Co., LTD

DR-AFS Series

Model : DR-AF#4SD

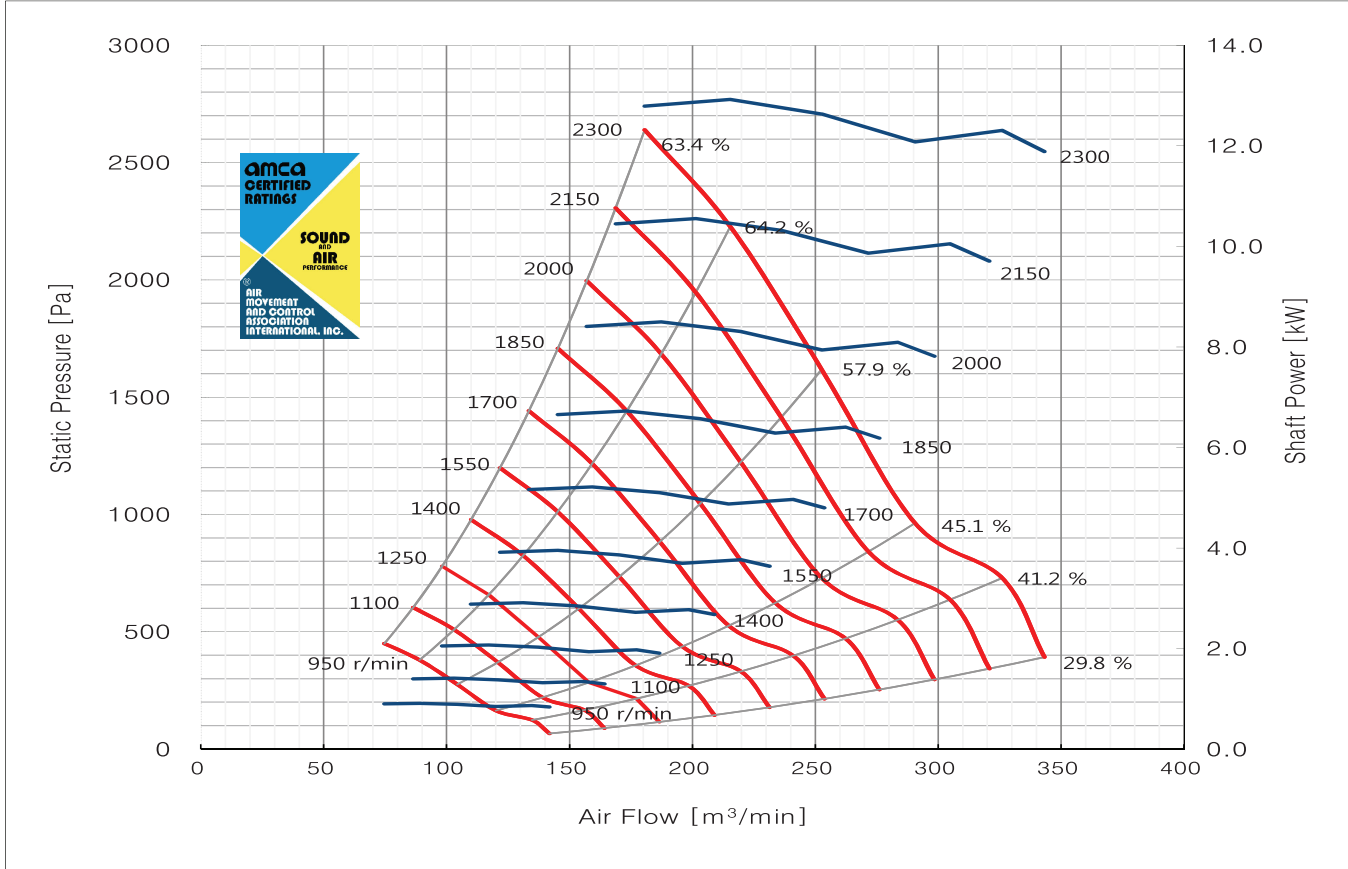
Wheel DIA. : 608 mm

Outlet Dim : 480 X 610 mm

Outlet Area : 0.293 m<sup>2</sup>

Det.	N [r/min]	Pt [Pa]	Ps [Pa]	Q m <sup>3</sup> /min	H [kW]	EtaT [%]	EtaS [%]	LwiA [dB]	Det.	N [r/min]	Pt [Pa]	Ps [Pa]	Q m <sup>3</sup> /min	H [kW]	EtaT [%]	EtaS [%]	LwiA [dB]
1	950	107	67	142	0.84	29.8	18.9	87	1	1100	144	90	164	1.31	29.8	18.9	90
2		162	124	134	0.87	41.2	32.2	85	2		217	167	155	1.35	41.2	32.2	88
3		195	164	119	0.86	45.1	38.6	84	3		262	220	138	1.33	45.1	38.6	88
4		302	276	104	0.90	57.9	53.8	82	4		405	370	120	1.39	57.9	53.8	86
5		402	380	88	0.92	64.2	61.8	81	5		539	510	102	1.42	64.2	61.8	84
6		469	450	74	0.91	63.4	61.9	81	6		629	604	86	1.40	63.4	61.9	84
1	1250	186	116	186	1.91	29.8	18.9	93	1	1400	233	146	208	2.69	29.8	18.9	96
2		280	215	177	1.98	41.2	32.2	91	2		352	270	198	2.78	41.2	32.2	94
3		338	285	157	1.94	45.1	38.6	91	3		424	357	176	2.73	45.1	38.6	93
4		523	478	137	2.03	57.9	53.8	89	4		656	600	153	2.85	57.9	53.8	91
5		696	658	117	2.08	64.2	61.8	87	5		873	825	131	2.92	64.2	61.8	90
6		812	780	98	2.06	63.4	61.9	87	6		1019	978	109	2.89	63.4	61.9	90
1	1550	286	178	231	3.64	29.8	18.9	98	1	1700	344	215	253	4.80	29.8	18.9	100
2		431	331	219	3.77	41.2	32.2	97	2		519	399	240	4.97	41.2	32.2	99
3		520	438	195	3.70	45.1	38.6	96	3		625	526	214	4.88	45.1	38.6	98
4		804	735	170	3.87	57.9	53.8	94	4		967	884	186	5.11	57.9	53.8	96
5		1070	1012	145	3.96	64.2	61.8	92	5		1288	1217	159	5.22	64.2	61.8	95
6		1249	1199	121	3.92	63.4	61.9	92	6		1502	1442	133	5.17	63.4	61.9	94
1	1850	407	254	276	6.19	29.8	18.9	106	1	2000	476	297	298	7.82	29.8	18.9	107
2		614	472	262	6.41	41.2	32.2	104	2		718	552	283	8.10	41.2	32.2	105
3		741	623	233	6.29	45.1	38.6	103	3		865	729	252	7.95	45.1	38.6	105
4		1146	1047	203	6.58	57.9	53.8	102	4		1339	1224	219	8.31	57.9	53.8	104
5		1525	1441	173	6.73	64.2	61.8	100	5		1782	1685	187	8.50	64.2	61.8	102
6		1779	1708	145	6.66	63.4	61.9	101	6		2079	1996	156	8.42	63.4	61.9	102
1	2150	550	343	320	9.71	29.8	18.9	109	1	2300	630	393	343	11.89	29.8	18.9	110
2		830	637	304	10.06	41.2	32.2	107	2		949	730	326	12.31	41.2	32.2	108
3		1000	842	271	9.87	45.1	38.6	106	3		1145	964	290	12.08	45.1	38.6	108
4		1547	1414	236	10.32	57.9	53.8	105	4		1771	1619	252	12.64	57.9	53.8	107
5		2060	1947	201	10.56	64.2	61.8	103	5		2357	2228	215	12.93	64.2	61.8	105
6		2403	2307	168	10.45	63.4	61.9	104	6		2750	2640	180	12.80	63.4	61.9	105

- The A-Weighted sound rating shown have been calculated per AMCA Standard 301
- Value shown are for inlet LwiA sound power levels for installation type B - free inlet, ducted outlet.
- Performance certified is for installation type B - free inlet, ducted outlet.
- Performance ratings do not include the effects of apputenances(accessories), Power rating Kw does not include transmission losses



\*상기 자료는 품질관리를 위해 예고없이 변경될 수 있습니다.

벨트 구동형 에어포일팬 (편흡입)

Belt driven Airfoil Fan

성능곡선

Dae-Ryun Ind. Co., LTD

DR-AFS Series

Model : DR-AF#4.5SD

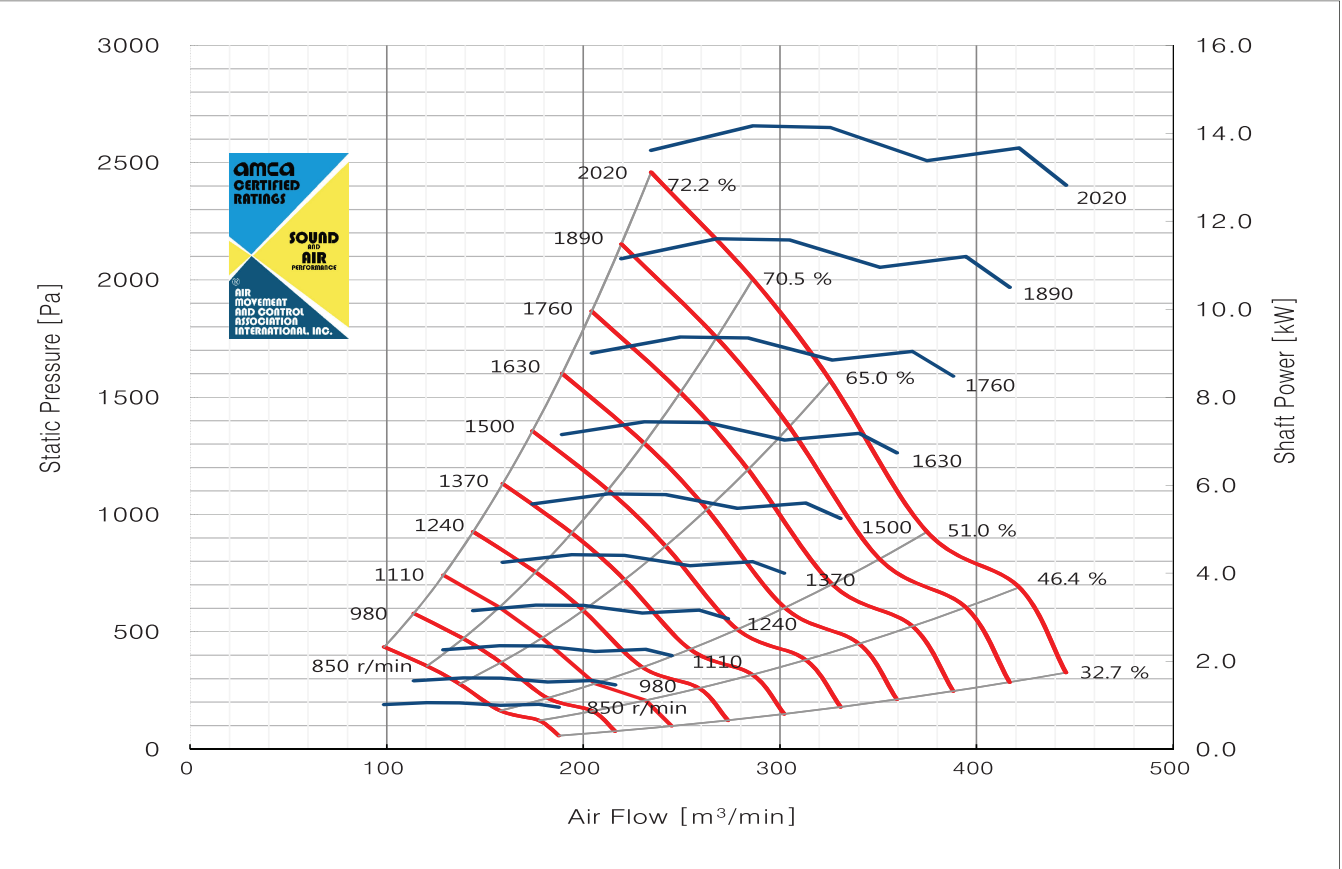
Wheel DIA. : 684 mm

Outlet Dim : 540 X 690 mm

Outlet Area : 0.37 m<sup>2</sup>

Det.	N [r/min]	Pt [Pa]	Ps [Pa]	Q m <sup>3</sup> /min	H [kW]	EtaT [%]	EtaS [%]	LwiA [dB]	Det.	N [r/min]	Pt [Pa]	Ps [Pa]	Q m <sup>3</sup> /min	H [kW]	EtaT [%]	EtaS [%]	LwiA [dB]
1	850	102	58	187	0.96	32.7	18.9	89	1	980	135	77	216	1.47	32.7	18.9	92
2		163	122	177	1.02	46.4	35.5	88	2		216	162	204	1.57	46.4	35.5	91
3		197	164	157	1.00	51.0	43.2	87	3		262	218	181	1.53	51.0	43.2	90
4		306	278	137	1.06	65.0	60.2	85	4		406	370	157	1.62	65.0	60.2	87
5		379	355	120	1.06	70.5	67.2	83	5		503	472	138	1.62	70.5	67.2	86
6		455	435	98	1.02	72.2	70.3	81	6		605	579	113	1.56	72.2	70.3	84
1	1110	174	99	244	2.13	32.7	18.9	94	1	1240	217	123	273	2.97	32.7	18.9	97
2		278	208	231	2.27	46.4	35.5	93	2		346	260	258	3.17	46.4	35.5	96
3		336	280	205	2.22	51.0	43.2	93	3		420	349	230	3.10	51.0	43.2	95
4		521	474	178	2.35	65.0	60.2	90	4		651	592	199	3.27	65.0	60.2	92
5		646	605	157	2.36	70.5	67.2	88	5		806	755	175	3.28	70.5	67.2	91
6		776	743	128	2.26	72.2	70.3	87	6		968	927	143	3.15	72.2	70.3	89
1	1370	265	150	302	4.00	32.7	18.9	99	1	1500	317	180	330	5.25	32.7	18.9	104
2		423	318	285	4.27	46.4	35.5	98	2		507	381	313	5.60	46.4	35.5	104
3		512	426	254	4.18	51.0	43.2	97	3		614	511	278	5.48	51.0	43.2	103
4		794	722	220	4.41	65.0	60.2	94	4		952	866	241	5.79	65.0	60.2	102
5		984	922	194	4.43	70.5	67.2	93	5		1179	1105	212	5.81	70.5	67.2	101
6		1182	1131	158	4.25	72.2	70.3	91	6		1417	1356	174	5.58	72.2	70.3	98
1	1630	374	213	359	6.74	32.7	18.9	106	1	1760	437	248	388	8.48	32.7	18.9	107
2		599	449	340	7.19	46.4	35.5	105	2		698	524	367	9.05	46.4	35.5	107
3		725	603	302	7.03	51.0	43.2	105	3		845	703	326	8.85	51.0	43.2	106
4		1124	1022	262	7.43	65.0	60.2	104	4		1311	1192	283	9.35	65.0	60.2	105
5		1392	1305	230	7.45	70.5	67.2	102	5		1623	1521	249	9.38	70.5	67.2	103
6		1673	1601	189	7.16	72.2	70.3	99	6		1951	1867	204	9.01	72.2	70.3	101
1	1890	503	286	416	10.51	32.7	18.9	108	1	2020	575	326	445	12.83	32.7	18.9	109
2		805	604	394	11.20	46.4	35.5	108	2		919	690	421	13.68	46.4	35.5	109
3		975	811	350	10.96	51.0	43.2	107	3		1114	926	374	13.38	51.0	43.2	109
4		1512	1374	304	11.58	65.0	60.2	106	4		1727	1570	325	14.13	65.0	60.2	107
5		1872	1754	267	11.61	70.5	67.2	105	5		2138	2004	286	14.17	70.5	67.2	106
6		2249	2153	219	11.16	72.2	70.3	102	6		2569	2459	234	13.62	72.2	70.3	104

- The A-Weighted sound rating shown have been calculated per AMCA Standard 301
- Value shown are for inlet LwiA sound power levels for installation type B - free inlet, ducted outlet.
- Performance certified is for installation type B - free inlet, ducted outlet.
- Performance ratings do not include the effects of apputenances(accessories), Power rating Kw does not include transmission losses



\*상기 자료는 품질관리를 위해 예고없이 변경될 수 있습니다.



벨트 구동형 에어포일팬 (편흡입)

Belt driven Airfoil Fan

성능곡선

Dae-Ryun Ind. Co., LTD

DR-AFS Series

Model : DR-AF#5SD

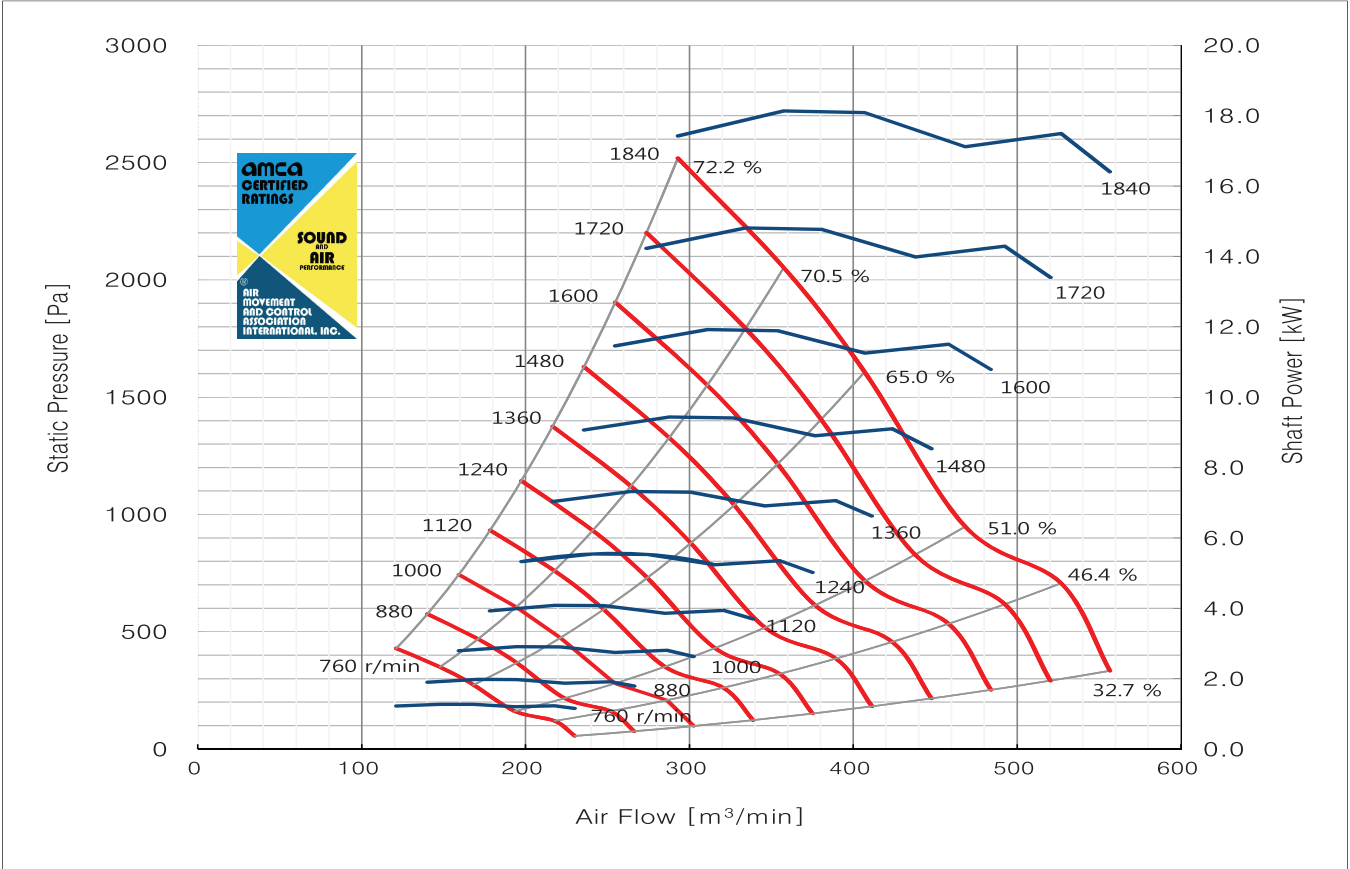
Wheel DIA. : 760 mm

Outlet Dim : 600 X 760 mm

Outlet Area : 0.457 m<sup>2</sup>

Det.	N [r/min]	Pt [Pa]	Ps [Pa]	Q m <sup>3</sup> /min	H [kW]	EtaT [%]	EtaS [%]	LwiA [dB]	Det.	N [r/min]	Pt [Pa]	Ps [Pa]	Q m <sup>3</sup> /min	H [kW]	EtaT [%]	EtaS [%]	LwiA [dB]
1	760	101	57	230	1.16	32.7	18.9	90	1	880	135	76	266	1.80	32.7	18.9	93
2		161	121	217	1.24	46.4	35.5	89	2		215	162	251	1.92	46.4	35.5	92
3		195	162	193	1.21	51.0	43.2	89	3		261	217	223	1.88	51.0	43.2	91
4		302	274	168	1.28	65.0	60.2	86	4		405	368	194	1.98	65.0	60.2	88
5		374	350	147	1.28	70.5	67.2	84	5		501	469	170	1.99	70.5	67.2	87
6		449	430	120	1.23	72.2	70.3	81	6		602	576	140	1.91	72.2	70.3	85
1	1000	174	99	302	2.64	32.7	18.9	95	1	1120	218	124	338	3.71	32.7	18.9	98
2		278	209	286	2.81	46.4	35.5	95	2		349	262	320	3.95	46.4	35.5	97
3		337	280	254	2.75	51.0	43.2	94	3		423	352	284	3.87	51.0	43.2	96
4		522	475	221	2.91	65.0	60.2	91	4		655	596	247	4.08	65.0	60.2	93
5		647	606	194	2.92	70.5	67.2	89	5		812	760	217	4.09	70.5	67.2	92
6		777	744	159	2.80	72.2	70.3	87	6		975	933	178	3.93	72.2	70.3	90
1	1240	268	152	375	5.03	32.7	18.9	100	1	1360	322	183	411	6.63	32.7	18.9	102
2		428	321	355	5.36	46.4	35.5	99	2		514	386	389	7.07	46.4	35.5	101
3		518	431	315	5.24	51.0	43.2	98	3		623	518	346	6.92	51.0	43.2	100
4		803	730	274	5.54	65.0	60.2	95	4		966	879	300	7.31	65.0	60.2	97
5		995	932	240	5.56	70.5	67.2	94	5		1197	1121	264	7.33	70.5	67.2	96
6		1195	1144	197	5.34	72.2	70.3	92	6		1438	1376	216	7.04	72.2	70.3	94
1	1480	381	216	447	8.54	32.7	18.9	107	1	1600	445	253	483	10.79	32.7	18.9	108
2		609	457	423	9.11	46.4	35.5	107	2		712	535	458	11.51	46.4	35.5	108
3		738	614	376	8.91	51.0	43.2	106	3		863	717	407	11.26	51.0	43.2	108
4		1144	1040	327	9.42	65.0	60.2	105	4		1337	1216	353	11.90	65.0	60.2	107
5		1417	1328	287	9.44	70.5	67.2	104	5		1656	1552	310	11.93	70.5	67.2	105
6		1703	1630	235	9.07	72.2	70.3	101	6		1990	1905	254	11.46	72.2	70.3	102
1	1720	515	292	520	13.41	32.7	18.9	110	1	1840	589	334	556	16.41	32.7	18.9	111
2		823	618	492	14.30	46.4	35.5	109	2		942	707	526	17.50	46.4	35.5	111
3		997	829	437	13.99	51.0	43.2	109	3		1141	949	468	17.13	51.0	43.2	110
4		1546	1405	380	14.78	65.0	60.2	108	4		1769	1608	406	18.09	65.0	60.2	109
5		1914	1793	334	14.82	70.5	67.2	106	5		2191	2052	357	18.14	70.5	67.2	107
6		2300	2201	273	14.24	72.2	70.3	104	6		2632	2519	292	17.43	72.2	70.3	105

- The A-Weighted sound rating shown have been calculated per AMCA Standard 301
- Value shown are for inlet LwiA sound power levels for installation type B - free inlet, ducted outlet.
- Performance certified is for installation type B - free inlet, ducted outlet.
- Performance ratings do not include the effects of apputenances(accessories), Power rating Kw does not include transmission losses



\*상기 자료는 품질관리를 위해 예고없이 변경될 수 있습니다.