

WELAIRE®

CFQ series



CABINET FAN BACKWARD CURVE



Zhongshan SAVER WELAIRE Air-Cond. Equip. Co., Ltd. certifies that the model: CFQ shown herein is licensed to bear the AMCA Seal. The ratings shown are based on tests and procedures performed in accordance with AMCA Publication 211 and AMCA Publication 311 and comply with the requirements of the AMCA Certified Ratings Program.



CFQ Series

- ◆ Suitable for installation with duct
- ◆ In-line application
- ◆ Uniquely designed external rotor motor
- ◆ Compact in size
- ◆ Low sound level

Introduction

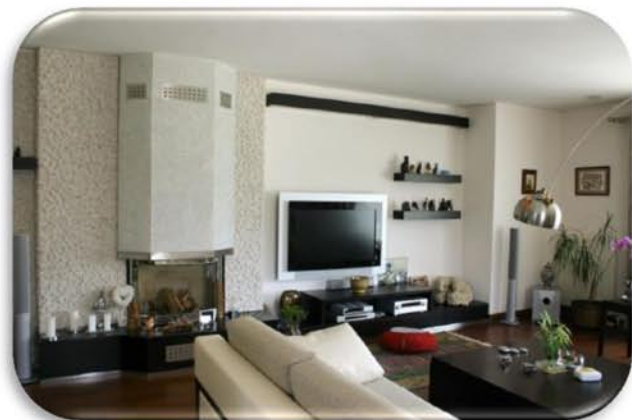
CFQ SERIES is specially designed for a wide range of general commercial and industrial application with the emphasis on good air flow performance at low sound level.

Impeller

- Backward curve

Motor

- Moisture resistant, suitable for humid and damp environment
- Permanently lubricated ball bearings ensuring reliable and maintenance-free operation
- Class F insulation
- Speed controllable
- Built-in thermal protection device
- Protected to IP54, against dust and moisture



Casing

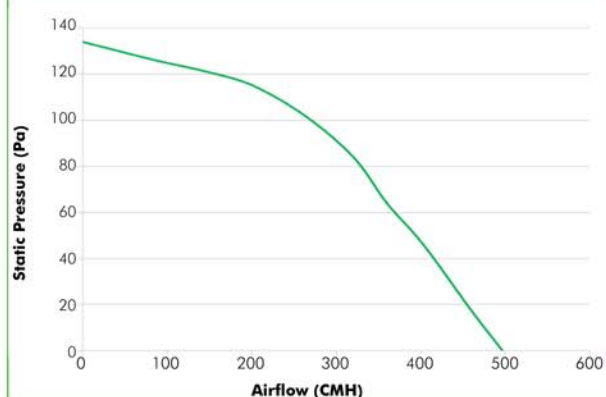
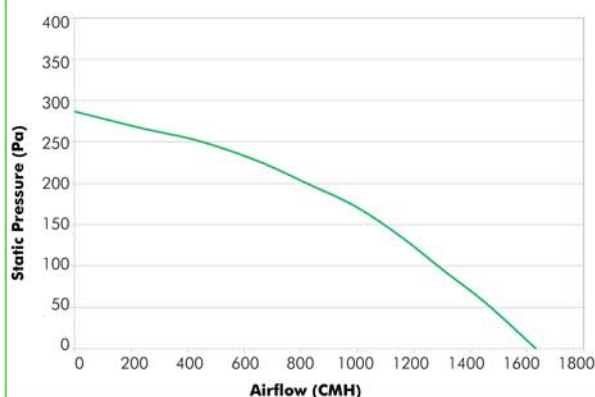
- Manufactured from high quality grade GI sheet

Accessories (optional)
Linear Speed Controller



Model C012 (up to 400W)

Performance Curve

CFQ 225

CFQ 315


Electrical Data

Model	CFQ225	CFQ 315
Volt / Phase / Hz	230 / 1 / 50	230 / 1 / 50
Max Motor Input (w)	52	150
Airflow (CMH)	497	1631
Static Pressure (Pa)	134	287
Amps	0.23	0.68
RPM	1440	1430
LwA dB(A)	67	73
LpA dB(A) at 3m	46	52

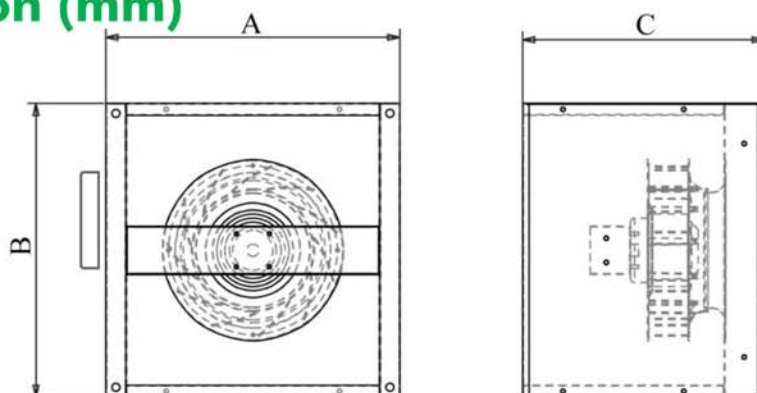
Speed (RPM) shown is nominal. Performance is based on actual speed of test.

LpA-dBA levels are not licensed by AMCA International.

Performance certified is for installation type D-Ducted inlet, Ducted outlet. Performance rating do not include the effects of appurtenances (accessories).

The A-weighted sound ratings shown have been calculated per AMCA International Standard 301. Values shown are for inlet LwA sound power levels for installation type D ducted inlet, ducted outlet. Ratings include the effects of duct end correction.

Dimension (mm)



Model	A	B	C
CFQ 225	365	365	300
CFQ 315	490	490	360

* Specifications subject to changes without prior notice.



ZHONGSHANS SAIVER WELAIRE AIR-COND. EQUIP. CO. LTD.

Guang Feng Industrial Estate, XiQu,
Zhongshan City, Guangdong, P.R. China.

Tel: (86) 760 2333 1878
Fax: (86) 760 2333 1178
E-mail: sales@saiver-welaire.com.cn
Website: www.saiver-welaire.com



WELCOME AIR-TECH (MALAYSIA) SDN BHD

46 Jalan Anggerik Mokara 31/47
Kota Kemuning, Seksyen 31,
40460 Shah Alam, Selangor D.E. Malaysia

Tel: (603) 5121 8090
Fax: (603) 5122 8090
E-mail: sales@saiver-welaire.com.my
www.saiver-welaire.com.my

Specification subject to changes
without prior notice.

LT-WE-CFQAMCA-V1-2014-03
April 2014