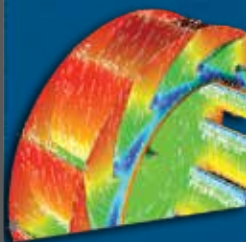


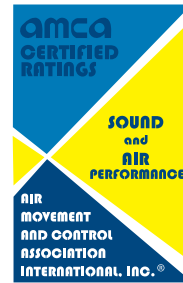
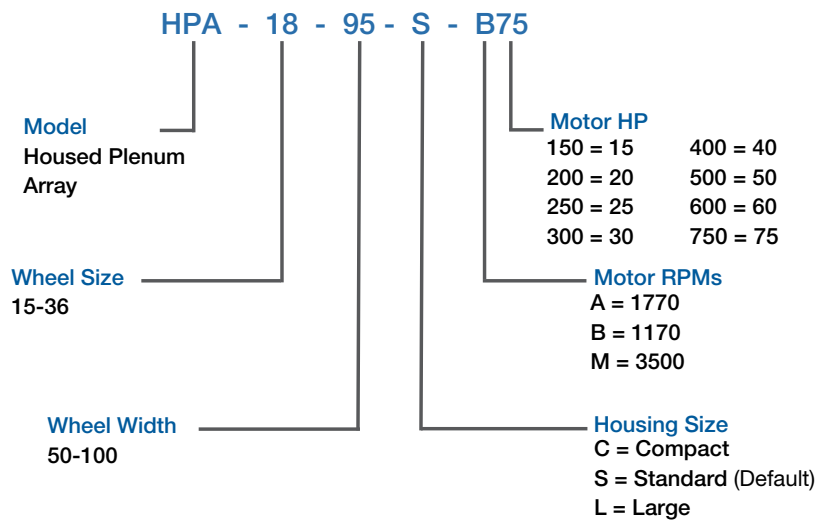
Plenum Fans

Model HPA

Performance Supplement



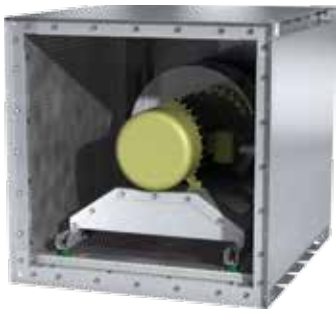
HPA Housed Plenum Fan



Greenheck Fan Corporation certifies that the model HPA shown herein is licensed to bear the AMCA Seal. The ratings shown are based on tests and procedures performed in accordance with

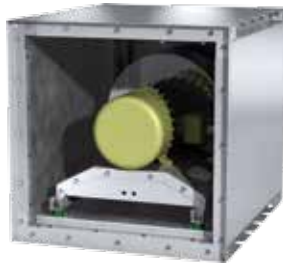
AMCA Publication 211 and AMCA Publication 311 and comply with the requirements of the AMCA Certified Ratings Program.

Standard



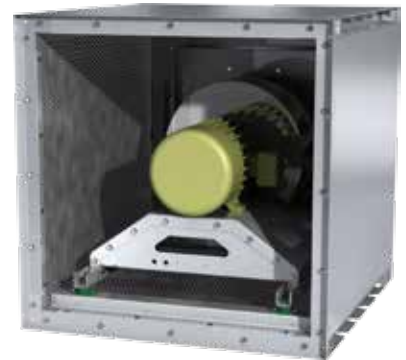
Sized for optimum performance versus footprint

Compact



Offers a smaller footprint than the standard housing for applications with space limitations

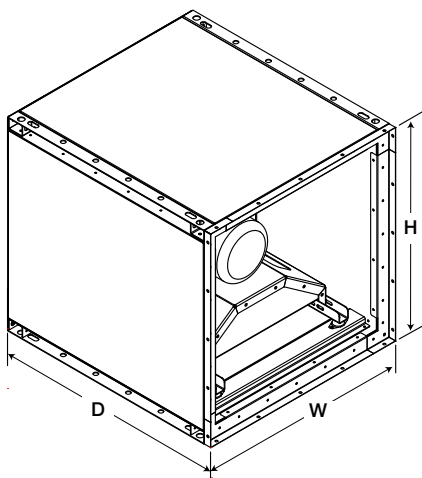
Large



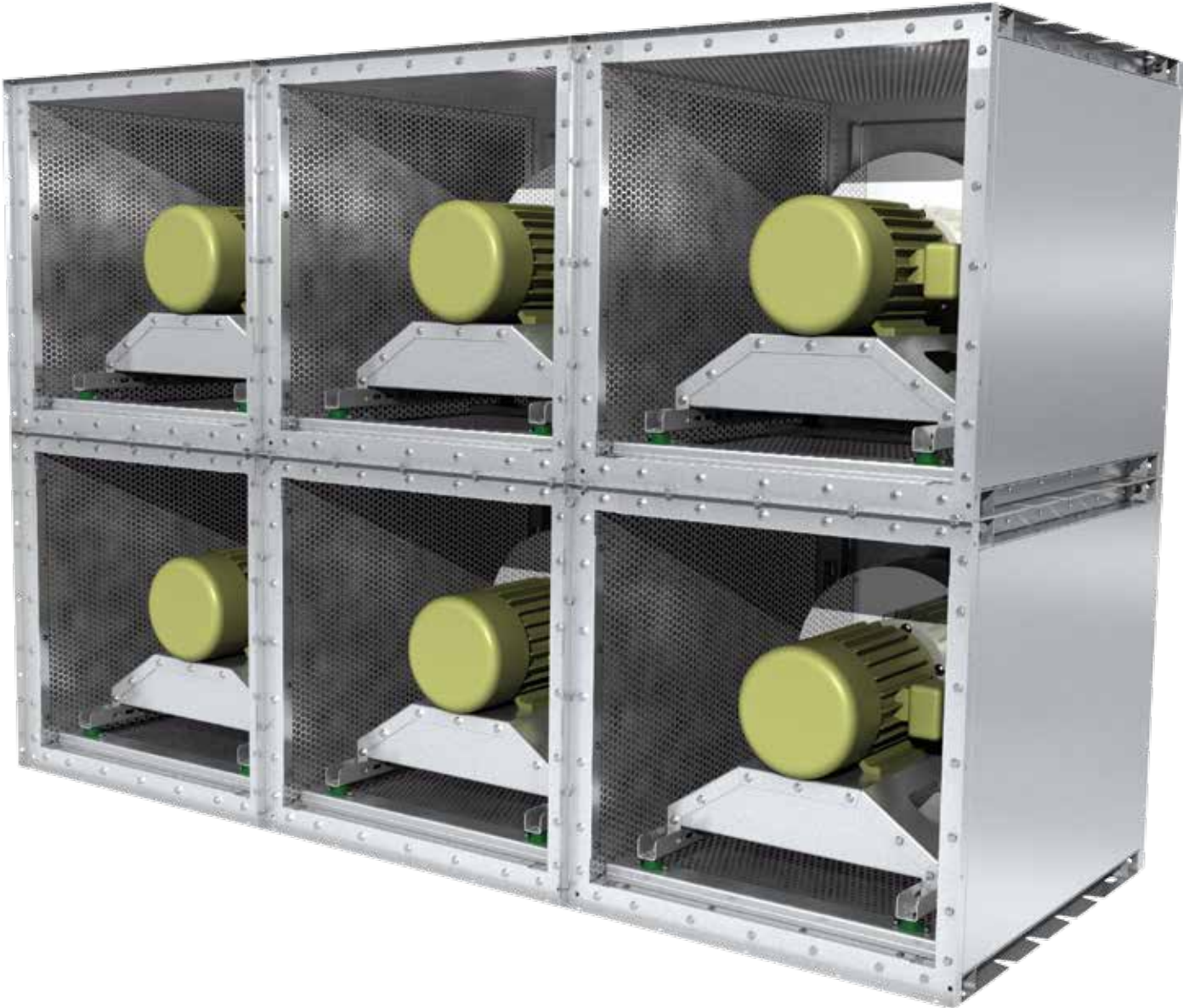
Offers improved air performance for applications that require high efficiency

HPA Dimensional Data

Dimensional Data



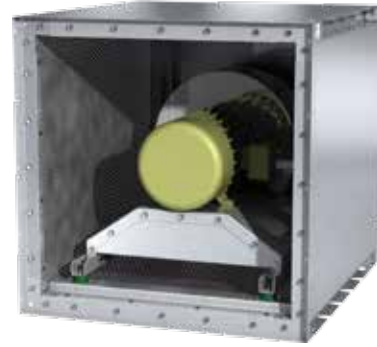
Wheel Size	Standard Housing					LMD (lbs.)
	W (in.)	H (in.)	D (in.)	Max Stacked Modules	Max Motor Frame	
15	29.000	29.000	31.000	4	213T	215
16	31.500	31.500	35.875	4	215T	250
18	34.375	34.375	37.125	3	254T	290
20	37.250	37.250	38.500	3	254T	340
22	41.000	41.000	41.125	3	256T	380
24	44.750	44.750	42.625	3	284T	425
27	48.875	48.875	46.500	2	286T	680
30	53.750	53.750	47.875	2	324T	820
33	58.750	58.750	50.000	2	326T	960
36	64.500	64.500	50.000	2	326T	1100



Plenum Size 15 - Standard

Maxium RPM	3500
HPA Motor on Frame Limit	213T
Wheel Diameter	15.00 [in.] 381 [mm]
Peak Power	(rpm / 1833) ³ [hp] (rpm / 2021) ³ [kW]
Outlet Velocity	cfm / 4.25 [ft/min] m ³ /hr / 1423 [m/s]
Tip Speed	rpm x 3.93 [ft/min] rpm x 0.0199 [m/s]
% Wide Open Volume (%WOV)	cfm / (rpm x 0.0177) [%] m ³ /hr / (rpm x 0.0301) [%]

Imperial data — [Metric data](#)



CFM	OV	STATIC PRESSURE (in. wg)											
		1.0		2.0		3.0		4.0		5.0		6.0	
		RPM	BHP	RPM	BHP	RPM	BHP	RPM	BHP	RPM	BHP	RPM	BHP
3000	705	1984	1.05	2214	1.65	2436	2.31	2645	2.99	2837	3.71		
3182	748	2075	1.18	2296	1.81	2507	2.48	2708	3.21	2899	3.94		
3364	791	2167	1.32	2380	1.97	2578	2.67	2774	3.43	2961	4.20	3134	4.99
3545	833	2260	1.47	2465	2.15	2653	2.88	2844	3.66	3023	4.47	3196	5.28
3727	876	2353	1.63	2553	2.35	2735	3.10	2915	3.90	3089	4.74	3258	5.59
3909	919	2447	1.81	2641	2.55	2818	3.33	2987	4.15	3159	5.02	3321	5.92
4091	962	2542	2.00	2731	2.77	2902	3.58	3062	4.42	3229	5.32	3387	6.25
4273	1004	2637	2.20	2821	3.01	2987	3.85	3144	4.72	3301	5.63	3457	6.58
4455	1047	2733	2.43	2912	3.26	3073	4.13	3227	5.03	3373	5.96		
4636	1090	2829	2.66	3004	3.53	3161	4.43	3310	5.35	3452	6.31		
4818	1133	2926	2.92	3096	3.82	3250	4.74	3395	5.70				
5000	1175	3023	3.19	3189	4.13	3339	5.08	3480	6.06				

RPM	% WOV	Inlet Sound Power, L _{Wi} [dB ref 10 ⁻¹² watts]										L _{WiA}
		1	2	3	4	5	6	7	8			
1200	99.6	71	78	76	73	67	60	54	45	74		
	80.2	76	82	73	69	62	56	49	43	71		
	59.7	69	73	69	66	63	57	51	45	68		
	52.8	68	71	69	65	62	58	52	46	67		
1600	99.8	73	77	83	79	75	73	65	55	81		
	80.3	76	77	79	76	70	68	59	52	77		
	59.9	75	74	76	73	68	67	59	54	75		
	53.6	74	76	75	72	68	67	60	55	74		
1770	99.8	75	76	86	87	78	76	68	58	86		
	80.1	77	77	82	81	71	70	62	55	81		
	60.2	74	73	79	78	69	70	63	58	78		
	52.7	72	74	77	77	69	69	63	58	77		
2200	99.9	76	80	83	96	82	82	74	68	93		
	80.3	77	79	82	90	77	76	69	62	88		
	60.2	78	78	80	86	74	74	69	64	85		
	52.3	74	77	80	84	74	74	70	64	83		
2900	99.9	81	82	85	92	86	88	83	77	93		
	80.0	83	82	86	93	84	83	78	72	92		
	60.1	85	84	84	90	81	81	78	72	89		
	51.5	80	81	81	89	80	80	78	73	89		
3500	99.9	85	87	89	94	92	91	89	83	98		
	80.0	87	88	90	96	91	88	84	77	96		
	60.1	88	90	89	93	88	85	83	78	94		
	51.5	84	87	86	92	88	84	83	78	93		

RPM	% WOV	Outlet Sound Power, L _{Wo} [dB ref 10 ⁻¹² watts]										L _{WoA}
		1	2	3	4	5	6	7	8			
1200	100.0	72	71	71	63	63	57	51	45	68		
	79.7	78	75	68	59	57	56	48	44	65		
	59.8	72	70	65	57	54	55	50	46	63		
	55.9	75	72	66	58	54	55	50	46	63		
1600	100.0	77	76	75	70	71	65	60	50	74		
	80.0	82	77	75	67	65	63	55	49	72		
	60.2	79	74	73	65	63	62	56	53	70		
	53.6	79	74	72	65	62	62	56	54	70		
1770	100	77	77	75	72	73	67	63	52	76		
	79.9	80	78	75	69	67	63	57	50	73		
	59.6	77	76	73	66	63	63	59	56	71		
	53.6	77	75	73	66	63	62	59	57	70		
2200	99.9	82	80	78	82	77	74	69	62	83		
	79.8	83	81	78	79	74	70	65	58	80		
	59.9	84	81	76	75	70	68	65	63	77		
	52.3	83	79	76	73	69	68	66	64	76		
2900	100	87	87	82	84	82	81	78	72	88		
	79.9	88	84	81	82	80	77	73	67	85		
	59.8	88	87	79	80	77	75	74	71	83		
	51.9	84	84	78	79	75	75	74	72	82		
3500	100	91	92	88	88	87	85	83	77	92		
	79.9	91	90	86	86	85	82	78	73	90		
	59.8	91	93	86	84	82	80	78	76	88		
	51.9	87	89	84	83	81	79	78	77	87		

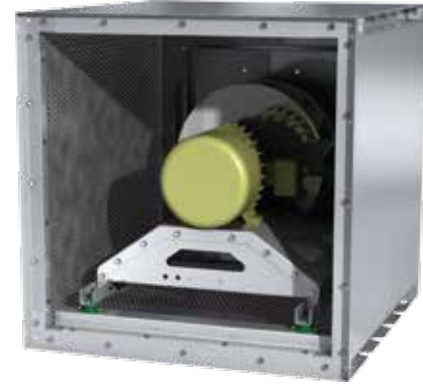
Performance certified is for installation type A: Free inlet, Free outlet. Power rating (Bhp) does not include transmission losses. Performance ratings do not include the effects of appurtenances (accessories).

Values shown are for inlet L_{Wi}, L_{WiA} and outlet L_{Wo}, L_{WoA} sound power levels for installation Type A: Free inlet, Free outlet. The A-weighted sound ratings shown have been calculated per AMCA International Standard 301. The AMCA International Certified Ratings Seal for Sound for model HPA applies to the single L_{WiA} and L_{WoA} values.

Plenum Size 15 - Large

Maxium RPM	3500
HPA Motor on Frame Limit	213T
Wheel Diameter	15.00 [in.] 381 [mm]
Peak Power	(rpm / 1840) ³ [hp] (rpm / 2029) ³ [kW]
Outlet Velocity	cfm / 5.16 [ft/min] m ³ /hr / 1726 [m/s]
Tip Speed	rpm x 3.93 [ft/min] rpm x 0.0199 [m/s]
% Wide Open Volume (%WOV)	cfm / (rpm x 0.0179) [%] m ³ /hr / (rpm x 0.0304) [%]

Imperial data — [Metric data](#)



CFM	OV	STATIC PRESSURE (in. wg)											
		1.0		2.0		3.0		4.0		5.0		6.0	
		RPM	BHP	RPM	BHP	RPM	BHP	RPM	BHP	RPM	BHP	RPM	BHP
3000	582	1973	1.03	2210	1.64	2437	2.28	2646	2.96	2838	3.67		
3182	617	2064	1.16	2292	1.79	2508	2.46	2708	3.17	2899	3.90		
3364	652	2155	1.29	2375	1.95	2581	2.65	2775	3.39	2961	4.15	3135	4.94
3545	688	2247	1.44	2460	2.12	2654	2.85	2846	3.62	3024	4.42	3196	5.23
3727	723	2340	1.60	2545	2.31	2731	3.07	2917	3.86	3090	4.69	3259	5.53
3909	758	2434	1.77	2631	2.51	2813	3.30	2990	4.12	3160	4.97	3321	5.85
4091	793	2528	1.96	2717	2.73	2896	3.54	3063	4.39	3232	5.27	3388	6.18
4273	829	2623	2.16	2806	2.96	2980	3.80	3140	4.68	3304	5.58	3458	6.52
4455	864	2719	2.37	2896	3.21	3065	4.07	3221	4.98	3376	5.91		
4636	899	2814	2.61	2987	3.47	3150	4.36	3304	5.29	3450	6.26		
4818	934	2911	2.86	3079	3.75	3236	4.67	3388	5.63				
5000	970	3007	3.12	3171	4.04	3323	4.99	3472	5.98				

RPM	% WOV	Inlet Sound Power, L _{Wi} [dB ref 10 ⁻¹² watts]									
		1	2	3	4	5	6	7	8	L _{WiA}	
1200	99.5	71	72	76	73	68	63	55	46	74	
	79.4	78	76	73	70	61	57	50	43	70	
	60.2	73	70	69	67	63	59	51	46	69	
	50.8	69	69	68	66	64	60	52	47	68	
1600	99.7	78	75	82	80	75	74	65	56	81	
	79.9	85	75	79	76	70	69	60	53	77	
	59.8	89	75	76	73	69	68	60	54	75	
	50	83	71	75	72	69	68	60	55	75	
1770	99.8	77	82	85	86	77	77	69	59	86	
	79.8	78	83	81	81	72	71	63	56	81	
	60.2	78	84	79	78	71	70	63	58	79	
	49.8	81	88	78	77	71	70	64	58	79	
2200	99.7	76	81	83	93	82	82	76	68	92	
	79.7	77	77	82	89	78	77	71	63	88	
	60.1	76	76	80	84	76	75	70	64	84	
	50.3	75	77	80	83	75	75	70	64	83	
2900	99.9	81	82	85	91	86	88	84	78	94	
	79.8	82	81	84	91	84	84	79	72	91	
	60	80	79	82	88	82	82	78	73	89	
	50.1	79	79	80	89	82	81	78	73	89	
3500	99.9	85	87	89	94	92	92	90	84	98	
	79.8	85	87	88	94	91	88	85	78	96	
	60	84	85	86	91	88	86	83	78	93	
	50.1	82	84	85	91	89	86	83	78	94	

RPM	% WOV	Outlet Sound Power, L _{Wo} [dB ref 10 ⁻¹² watts]									
		1	2	3	4	5	6	7	8	L _{WoA}	
1200	94.3	73	70	72	63	63	55	50	44	68	
	80.2	82	74	71	61	57	58	47	45	67	
	60.2	74	69	70	61	55	57	49	47	65	
	51.7	73	68	71	63	55	59	52	50	67	
1600	94.3	85	74	75	68	70	66	59	50	74	
	79.6	86	74	75	66	66	64	56	49	72	
	60.2	85	72	72	64	64	64	56	53	70	
	50.0	87	72	72	64	64	63	56	54	70	
1770	99.8	80	79	75	72	72	69	63	52	76	
	79.8	79	80	75	70	67	66	58	51	74	
	60.2	78	81	72	67	64	64	59	56	72	
	50.7	78	82	72	66	63	63	59	58	72	
2200	94.3	82	79	78	78	77	75	70	62	81	
	80.0	84	76	76	77	73	70	65	57	78	
	60.1	83	75	75	72	69	68	65	62	75	
	50.7	83	74	75	70	68	68	65	64	75	
2900	94.3	88	83	82	83	82	81	78	71	87	
	79.9	87	81	80	82	80	77	73	67	85	
	60	85	80	78	78	76	75	73	70	82	
	49.7	86	81	78	78	75	75	74	72	82	
3500	94.3	91	90	87	87	86	85	83	77	92	
	79.9	90	88	85	86	85	82	79	73	89	
	60	88	86	83	82	81	79	78	75	87	
	49.7	89	87	83	82	81	79	78	77	87	

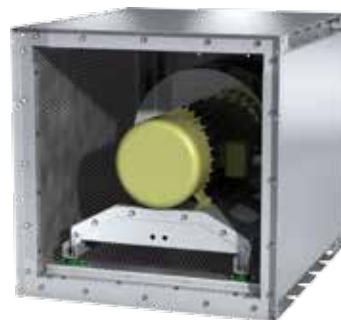
Performance certified is for installation type A: Free inlet, Free outlet. Power rating (Bhp) does not include transmission losses. Performance ratings do not include the effects of appurtenances (accessories).

Values shown are for inlet L_{Wi}, L_{WiA} and outlet L_{Wo}, L_{WoA} sound power levels for installation Type A: Free inlet, Free outlet. The A-weighted sound ratings shown have been calculated per AMCA International Standard 301. The AMCA International Certified Ratings Seal for Sound for model HPA applies to the single L_{WiA} and L_{WoA} values.

Plenum Size 16 - Compact

Maxium RPM	3500
HPA Motor on Frame Limit	215T
Wheel Diameter	16.50 [in.] 419 [mm]
Peak Power	(rpm / 1552) ³ [hp] (rpm / 1712) ³ [kW]
Outlet Velocity	cfm / 4.25 [ft/min] m ³ /s / 1423 [m/s]
Tip Speed	rpm x 4.32 [ft/min] rpm x 0.0219 [m/s]
% Wide Open Volume (%WOV)	cfm / (rpm x 0.0230) [%] m ³ /hr / (rpm x 0.0390) [%]

Imperial data — [Metric data](#)



CFM	OV	STATIC PRESSURE (in. wg)													
		1.0		2.0		3.0		4.0		5.0		6.0		7.0	
		RPM	BHP	RPM	BHP	RPM	BHP	RPM	BHP	RPM	BHP	RPM	BHP	RPM	BHP
3400	799	1742	1.21	1970	1.96	2181	2.75	2377	3.58						
3727	876	1865	1.44	2080	2.24	2278	3.09	2460	3.98	2639	4.89				
4055	953	1991	1.71	2193	2.56	2378	3.47	2556	4.40	2721	5.38	2884	6.38		
4382	1030	2121	2.01	2308	2.91	2486	3.87	2655	4.87	2813	5.90	2966	6.96	3115	8.04
4709	1107	2252	2.36	2427	3.31	2597	4.32	2755	5.38	2911	6.46	3055	7.58	3197	8.72
5036	1184	2385	2.74	2549	3.74	2711	4.81	2862	5.93	3010	7.07	3152	8.24	3285	9.44
5364	1261	2519	3.18	2673	4.22	2826	5.34	2974	6.51	3111	7.72	3250	8.94	3382	10.20
5691	1338	2653	3.66	2798	4.76	2944	5.93	3087	7.15	3220	8.41	3350	9.70	3480	11.00
6018	1415	2789	4.20	2928	5.35	3066	6.56	3201	7.84	3332	9.15	3455	10.50		
6345	1492	2923	4.78	3059	5.99	3189	7.26	3317	8.58	3445	9.95				
6673	1569	3059	5.43	3190	6.69	3313	8.00	3437	9.38						
7000	1646	3195	6.13	3323	7.46	3439	8.82								

RPM	% WOV	Inlet Sound Power, L _{Wi} [dB ref 10 ⁻¹² watts]										L _{WiA}
		1	2	3	4	5	6	7	8			
1100	99.7	81	80	79	74	64	60	60	49	75		
	79.5	79	77	79	72	62	58	59	49	74		
	59.6	73	73	79	70	63	59	60	51	73		
	52	72	74	78	69	62	59	60	52	72		
1500	94.3	85	87	87	81	72	71	66	57	83		
	80	85	84	85	79	69	68	65	57	80		
	61.1	77	78	82	75	68	67	65	60	78		
	52.1	78	79	79	75	67	67	66	60	77		
1770	99.9	85	87	89	88	80	78	71	63	88		
	80.4	85	85	87	86	74	73	67	62	85		
	60.3	78	77	83	80	71	71	67	64	81		
	52.2	81	82	83	79	71	70	68	64	80		
2000	99.9	80	83	87	93	84	83	76	69	92		
	79.9	83	85	87	93	78	77	71	65	91		
	60.2	77	82	84	86	74	74	71	67	85		
	52.3	88	85	86	83	74	74	71	67	83		
2800	99.9	87	86	89	97	91	92	89	82	99		
	79.4	85	87	91	93	87	86	83	76	94		
	60.2	85	86	88	93	83	82	80	76	92		
	54.2	82	82	85	91	82	81	79	76	90		
3500	99.9	91	93	94	100	99	97	95	89	104		
	79.4	89	93	95	98	94	92	89	83	100		
	60.2	89	92	93	97	92	87	86	82	97		
	54.2	86	89	90	94	91	86	85	82	95		

RPM	% WOV	Outlet Sound Power, L _{Wo} [dB ref 10 ⁻¹² watts]										L _{WoA}
		1	2	3	4	5	6	7	8			
1100	99.7	84	81	73	63	70	60	65	54	74		
	79.8	82	78	72	61	70	59	64	54	73		
	60.9	76	78	70	59	71	59	64	54	73		
	52.6	75	76	69	59	70	59	64	54	72		
1500	94.3	88	87	80	71	70	69	70	58	78		
	80.1	88	84	78	68	66	67	70	58	77		
	59.8	81	78	77	66	63	66	71	59	75		
	52.5	83	79	76	67	63	67	70	59	75		
1770	94.3	83	83	80	76	75	72	66	57	80		
	80.1	87	83	80	74	71	67	61	55	77		
	60.1	81	81	78	71	67	65	62	59	75		
	54.6	80	82	77	69	65	64	62	60	74		
2000	94.3	85	84	82	81	79	77	72	64	84		
	79.7	87	85	82	80	75	71	68	61	81		
	59.8	83	83	80	75	70	68	68	64	78		
	52.8	90	85	82	73	71	69	68	65	79		
2800	100	91	91	86	86	86	86	82	76	92		
	79.7	90	91	85	86	83	81	77	71	88		
	60.1	90	89	83	83	79	78	76	73	86		
	54	88	89	82	82	78	76	76	74	85		
3500	100	95	97	93	91	91	91	88	83	97		
	79.7	94	97	92	91	89	87	83	78	94		
	60.1	93	95	91	88	85	83	81	79	91		
	54	92	95	90	87	84	82	81	79	91		

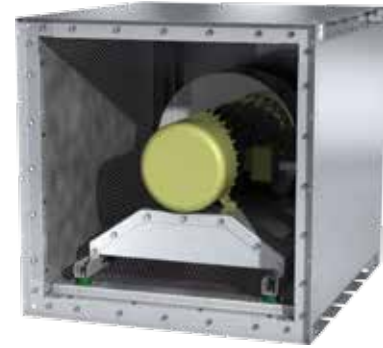
Performance certified is for installation type A: Free inlet, Free outlet. Power rating (Bhp) does not include transmission losses. Performance ratings do not include the effects of appurtenances (accessories).

Values shown are for inlet L_{Wi}, L_{WiA} and outlet L_{Wo}, L_{WoA} sound power levels for installation Type A: Free inlet, Free outlet. The A-weighted sound ratings shown have been calculated per AMCA International Standard 301. The AMCA International Certified Ratings Seal for Sound for model HPA applies to the single L_{WiA} and L_{WoA} values.

Plenum Size 16 - Standard

Maximum RPM	3500
HPA Motor on Frame Limit	215T
Wheel Diameter	16.50 [in.] 419 [mm]
Peak Power	$(\text{rpm} / 1564)^3$ [hp] $(\text{rpm} / 1724)^3$ [kW]
Outlet Velocity	$\text{cfm} / 5.16$ [ft/min] $\text{m}^3/\text{hr} / 1725$ [m/s]
Tip Speed	$\text{rpm} \times 4.32$ [ft/min] $\text{rpm} \times 0.0219$ [m/s]
% Wide Open Volume (%WOV)	$\text{cfm} / (\text{rpm} \times 0.0235)$ [%] $\text{m}^3/\text{hr} / (\text{rpm} \times 0.0400)$ [%]

Imperial data — Metric data



CFM	OV	STATIC PRESSURE (in. wg)													
		1.0		2.0		3.0		4.0		5.0		6.0		7.0	
		RPM	BHP	RPM	BHP	RPM	BHP	RPM	BHP	RPM	BHP	RPM	BHP	RPM	BHP
3400	659	1718	1.13	1937	1.82	2149	2.58	2346	3.37						
3727	723	1840	1.34	2045	2.08	2243	2.89	2430	3.74	2604	4.61				
4055	786	1964	1.58	2158	2.37	2339	3.22	2517	4.13	2688	5.06	2845	6.01		
4382	850	2090	1.86	2274	2.70	2443	3.59	2613	4.54	2773	5.54	2929	6.55	3074	7.58
4709	913	2217	2.17	2394	3.06	2555	4.00	2709	4.99	2865	6.04	3013	7.12	3157	8.20
5036	977	2345	2.51	2515	3.47	2668	4.46	2813	5.49	2961	6.58	3104	7.72	3242	8.87
5364	1040	2474	2.90	2637	3.91	2784	4.96	2924	6.04	3059	7.16	3199	8.34	3330	9.56
5691	1104	2604	3.33	2761	4.40	2903	5.50	3038	6.63	3165	7.79	3295	9.01	3425	10.28
6018	1167	2735	3.81	2887	4.94	3024	6.08	3152	7.27	3277	8.48	3394	9.73		
6345	1231	2867	4.34	3013	5.52	3146	6.72	3270	7.96	3390	9.22				
6673	1294	2999	4.92	3140	6.15	3269	7.41	3390	8.70						
7000	1357	3131	5.54	3268	6.84	3393	8.16								

RPM	% WOV	Inlet Sound Power, L_{Wi} [dB ref 10^{-12} watts]									
		1	2	3	4	5	6	7	8	L_{WiA}	
1200	99.6	75	82	79	76	70	63	57	48	77	
	80.2	80	85	77	72	65	59	52	45	74	
	59.7	73	76	72	69	66	60	54	48	71	
	52.8	71	74	72	68	65	61	55	49	70	
	99.8	77	80	87	82	78	76	67	58	84	
1600	80.3	80	81	82	79	73	71	62	55	80	
	59.9	79	78	80	76	71	70	62	57	78	
	53.6	77	79	79	75	71	70	63	58	77	
	99.8	79	80	89	90	81	79	71	61	89	
	80.1	80	80	85	84	74	73	65	58	84	
1770	60.2	78	77	82	81	72	72	65	60	81	
	52.7	76	77	81	80	72	72	66	61	80	
	99.9	80	83	86	99	85	85	77	70	96	
	80.3	81	82	85	93	80	79	72	65	91	
	60.2	81	82	84	89	77	77	72	67	88	
2200	52.3	77	80	83	87	77	77	73	67	86	
	99.9	85	85	89	95	89	91	86	80	96	
	80	87	86	89	96	86	86	81	75	95	
	60.1	89	88	87	93	84	83	81	75	92	
	51.5	84	85	85	92	83	83	81	75	92	
2900	99.9	88	91	93	97	95	94	92	86	101	
	80	90	92	93	99	94	90	87	80	99	
	60.1	92	93	92	96	91	88	85	80	97	
	51.5	87	90	90	95	91	87	86	81	96	

RPM	% WOV	Outlet Sound Power, L_{Wo} [dB ref 10^{-12} watts]									
		1	2	3	4	5	6	7	8	L_{WoA}	
1200	100.0	75	75	74	66	66	60	54	48	71	
	79.7	82	78	71	62	60	59	51	47	69	
	59.8	76	74	68	60	57	58	53	49	66	
	55.9	78	76	69	60	57	58	53	49	66	
	100.0	81	79	78	73	74	68	63	53	77	
1600	80.0	85	81	78	70	68	66	58	52	75	
	60.2	83	77	76	68	66	65	59	56	73	
	53.6	82	77	75	68	65	64	59	57	73	
	100	81	80	78	75	76	70	65	55	79	
	79.9	83	81	78	72	70	66	60	53	76	
1770	59.6	81	80	76	69	66	66	62	59	74	
	53.6	80	78	76	69	65	65	62	60	73	
	99.9	86	84	81	85	80	77	72	65	86	
	79.8	87	85	81	81	77	73	68	60	82	
	59.9	88	84	79	78	73	71	68	66	80	
2200	52.3	86	83	79	76	72	71	69	67	79	
	100	91	90	85	87	85	84	80	75	90	
	79.9	91	88	84	85	83	80	76	70	88	
	59.8	91	91	82	83	79	78	77	74	86	
	51.9	87	87	81	82	78	78	77	75	85	
2900	100	94	95	91	91	90	88	85	80	95	
	79.9	95	94	89	89	88	85	81	75	92	
	59.8	95	96	89	87	85	83	81	79	91	
	51.9	90	92	87	86	84	82	81	80	90	

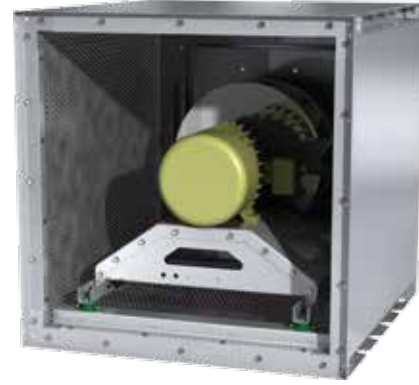
Performance certified is for installation type A: Free inlet, Free outlet. Power rating (Bhp) does not include transmission losses. Performance ratings do not include the effects of appurtenances (accessories).

Values shown are for inlet L_{Wi} , L_{WiA} and outlet L_{Wo} , L_{WoA} sound power levels for installation Type A: Free inlet, Free outlet. The A-weighted sound ratings shown have been calculated per AMCA International Standard 301. The AMCA International Certified Ratings Seal for Sound for model HPA applies to the single L_{WiA} and L_{WoA} values.

Plenum Size 16 - Large

Maxium RPM	3500
HPA Motor on Frame Limit	215T
Wheel Diameter	16.50 [in.] 419 [mm]
Peak Power	(rpm / 1570) ³ [hp] (rpm / 1731) ³ [kW]
Outlet Velocity	cfm / 6.30 [ft/min] m ³ /hr / 2108 [m/s]
Tip Speed	rpm x 4.32 [ft/min] rpm x 0.0219 [m/s]
% Wide Open Volume (%WOV)	cfm / (rpm x 0.0238) [%] m ³ /hr / (rpm x 0.0404) [%]

Imperial data — [Metric data](#)



CFM	OV	STATIC PRESSURE (in. wg)													
		1.0		2.0		3.0		4.0		5.0		6.0		7.0	
		RPM	BHP	RPM	BHP	RPM	BHP	RPM	BHP	RPM	BHP	RPM	BHP	RPM	BHP
3400	539	1711	1.11	1939	1.80	2150	2.55	2346	3.33						
3727	591	1830	1.31	2042	2.06	2244	2.86	2430	3.70	2605	4.56				
4055	643	1953	1.55	2154	2.34	2341	3.19	2519	4.09	2688	5.00	2846	5.95		
4382	695	2078	1.82	2268	2.66	2440	3.56	2614	4.50	2773	5.48	2929	6.48	3075	7.51
4709	747	2205	2.12	2384	3.02	2550	3.96	2712	4.95	2867	5.98	3014	7.04	3158	8.12
5036	799	2332	2.46	2501	3.41	2663	4.40	2811	5.45	2963	6.52	3105	7.63	3242	8.77
5364	851	2461	2.84	2623	3.84	2777	4.89	2920	5.98	3061	7.10	3201	8.26	3332	9.46
5691	903	2591	3.26	2746	4.32	2892	5.41	3032	6.55	3161	7.73	3298	8.94	3427	10.18
6018	955	2721	3.73	2871	4.84	3010	5.98	3145	7.17	3272	8.40	3397	9.66		
6345	1007	2853	4.25	2996	5.41	3129	6.61	3260	7.84	3384	9.11				
6673	1058	2984	4.81	3123	6.03	3251	7.28	3376	8.56	3497	9.88				
7000	1110	3116	5.42	3250	6.70	3375	8.00	3493	9.34						

RPM	% WOV	Inlet Sound Power, L _{Wi} [dB ref 10 ⁻¹² watts]									L _{WA}
		1	2	3	4	5	6	7	8		
1200	99.6	75	76	79	76	71	66	58	49	77	
	80.2	81	79	76	73	64	60	53	46	73	
	59.7	77	73	72	70	66	62	54	49	72	
	52.8	73	72	72	69	66	63	55	50	71	
1600	99.8	82	79	85	83	78	77	68	59	84	
	80.3	89	78	82	79	72	72	63	55	80	
	59.9	93	78	79	76	72	71	63	57	78	
	53.6	87	75	79	75	72	71	63	58	78	
1770	99.8	81	86	88	89	80	80	72	62	89	
	80.1	81	87	84	84	75	74	66	59	84	
	60.2	82	87	82	81	74	73	66	60	82	
	52.7	85	92	81	80	74	73	67	61	82	
2200	99.9	80	85	86	96	85	85	79	71	95	
	80.3	81	80	85	92	81	80	74	66	91	
	60.2	79	80	83	87	79	78	73	67	87	
	52.3	78	80	83	86	78	78	73	67	86	
2900	99.9	85	86	89	94	89	91	87	81	97	
	80.0	86	85	87	94	87	87	82	75	94	
	60.1	84	83	85	91	85	85	81	75	92	
	51.5	82	83	84	92	85	84	81	76	92	
3500	99.9	88	91	93	97	95	94	92	87	101	
	80.0	89	91	91	97	94	91	88	81	99	
	60.1	87	88	89	94	91	89	86	81	96	
	51.5	85	88	88	94	92	89	86	81	96	

RPM	% WOV	Outlet Sound Power, L _{Wo} [dB ref 10 ⁻¹² watts]								
		1	2	3	4	5	6	7	8	L _{WoA}
1200	100.0	77	74	75	66	66	58	53	47	71
	79.7	85	77	74	64	60	61	50	47	70
	59.8	78	72	73	64	58	60	52	49	68
	55.9	76	71	74	66	58	62	55	53	70
1600	100.0	88	78	78	71	73	69	62	53	77
	80.0	89	77	78	69	69	67	58	52	75
	60.2	88	75	75	67	67	67	59	56	73
	53.6	91	75	75	67	67	66	59	57	73
1770	100	83	82	78	75	75	72	66	55	79
	79.9	82	83	78	73	70	69	61	54	77
	59.6	82	85	75	69	67	67	62	59	75
	53.6	81	85	75	69	66	66	62	61	75
2200	99.9	86	82	81	81	79	78	73	65	84
	79.8	87	79	79	80	76	73	68	60	81
	59.9	87	78	78	75	72	71	68	65	78
	52.3	86	77	78	73	70	71	68	67	78
2900	100	91	87	85	86	85	84	81	74	90
	79.9	90	85	83	85	83	80	76	70	88
	59.8	89	83	81	81	79	78	76	73	85
	51.9	89	84	81	81	78	78	77	75	85
3500	100	94	93	90	90	89	88	86	80	95
	79.9	94	91	88	88	88	85	82	75	92
	59.8	92	90	86	85	84	82	81	78	90
	51.9	92	90	86	85	84	82	81	80	90

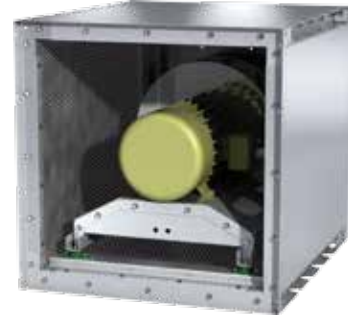
Performance certified is for installation type A: Free inlet, Free outlet. Power rating (Bhp) does not include transmission losses. Performance ratings do not include the effects of appurtenances (accessories).

Values shown are for inlet L_{Wi}, L_{WiA} and outlet L_{Wo}, L_{WoA} sound power levels for installation Type A: Free inlet, Free outlet. The A-weighted sound ratings shown have been calculated per AMCA International Standard 301. The AMCA International Certified Ratings Seal for Sound for model HPA applies to the single L_{WiA} and L_{WoA} values.

Plenum Size 18 - Compact

Maxium RPM	3500
HPA Motor on Frame Limit	254T
Wheel Diameter	18.25 [in.] 464 [mm]
Peak Power	(rpm / 1316) ³ [hp] (rpm / 1451) ³ [kW]
Outlet Velocity	cfm / 5.16 [ft/min] m ³ /hr / 1725 [m/s]
Tip Speed	rpm x 4.78 [ft/min] rpm x 0.0243 [m/s]
% Wide Open Volume (%WOV)	cfm / (rpm x 0.0325) [%] m ³ /hr / (rpm x 0.0551) [%]

Imperial data — Metric data



CFM	OV	STATIC PRESSURE (in. wg)													
		1.0		2.0		3.0		4.0		5.0		6.0		7.0	
		RPM	BHP	RPM	BHP	RPM	BHP	RPM	BHP	RPM	BHP	RPM	BHP	RPM	BHP
4500	873	1624	1.63	1824	2.55	2010	3.53	2179	4.54						
4955	961	1747	1.97	1934	2.96	2108	4.02	2270	5.11	2422	6.22				
5409	1049	1872	2.36	2046	3.42	2210	4.56	2367	5.73	2511	6.94	2649	8.15		
5864	1137	2000	2.81	2164	3.94	2319	5.15	2465	6.40	2607	7.68	2738	9.01	2866	10.31
6318	1225	2128	3.32	2285	4.54	2430	5.80	2569	7.14	2705	8.49	2833	9.89	2954	11.31
6773	1313	2258	3.90	2407	5.20	2544	6.52	2678	7.93	2804	9.38	2931	10.84	3049	12.34
7227	1402	2389	4.55	2531	5.94	2663	7.33	2789	8.79	2911	10.32	3030	11.87	3146	13.43
7682	1490	2521	5.28	2657	6.75	2784	8.22	2902	9.74	3021	11.33	3133	12.97	3245	14.62
8136	1578	2654	6.09	2784	7.63	2906	9.19	3020	10.78	3132	12.43	3242	14.14	3346	15.89
8591	1666	2787	6.99	2912	8.60	3029	10.26	3140	11.91	3245	13.62	3352	15.39	3454	17.21
9045	1754	2921	7.97	3041	9.67	3154	11.41	3261	13.14	3363	14.91	3464	16.74		
9500	1842	3055	9.06	3171	10.83	3280	12.65	3384	14.47	3483	16.31				

RPM	% WOV	Inlet Sound Power, L _{Wi} [dB ref 10 ⁻¹² watts]									
		1	2	3	4	5	6	7	8	L _{WiA}	
1000	99.6	82	82	82	73	61	61	54	49	76	
	80.1	80	80	79	72	59	56	49	44	74	
	60.4	76	78	76	70	58	55	50	45	71	
	54.8	75	77	76	68	58	55	50	46	71	
1400	99.8	81	84	94	81	75	72	68	64	87	
	79	85	86	92	80	70	68	61	56	85	
	59.7	84	83	85	77	68	67	60	56	79	
	54	82	81	85	77	67	66	60	56	79	
1770	99.9	86	86	94	93	82	80	74	70	92	
	79.5	90	87	91	90	77	76	69	65	89	
	61.3	86	84	89	88	74	74	68	62	87	
	57.8	84	81	89	87	73	73	67	62	86	
1900	99.9	87	88	92	99	83	81	76	72	97	
	80.3	87	88	91	96	79	78	72	67	94	
	59.8	84	83	89	94	76	76	70	64	91	
	57.7	85	88	89	93	75	76	69	64	91	
2600	99.9	94	93	98	99	91	91	85	81	99	
	80.4	94	93	96	98	88	88	82	77	97	
	59.9	89	88	93	97	85	85	80	75	95	
	57.7	91	88	94	95	84	85	80	74	94	
3500	99.9	99	102	103	106	101	98	94	89	107	
	80.4	99	102	102	104	99	95	91	85	105	
	59.9	94	97	99	102	97	92	89	83	102	
	57.7	96	98	99	102	96	91	88	83	102	

RPM	% WOV	Outlet Sound Power, L _{Wo} [dB ref 10 ⁻¹² watts]									
		1	2	3	4	5	6	7	8	L _{WoA}	
1000	94.3	85	82	75	63	57	55	49	50	71	
	80.1	82	80	74	61	54	51	47	49	69	
	59.8	82	82	71	60	53	51	48	48	69	
	57.4	81	82	69	60	52	51	49	48	68	
1400	99.8	84	83	81	71	68	66	61	53	76	
	80.2	85	84	80	69	66	63	56	51	75	
	60.3	84	80	78	67	64	62	57	55	73	
	55.5	84	78	78	66	64	61	57	56	72	
1770	99.9	88	85	86	83	75	73	68	61	84	
	79.7	90	85	83	80	72	70	64	59	81	
	60.1	87	81	81	76	69	68	64	63	78	
	56.2	85	80	80	75	68	67	65	63	77	
1900	94.3	88	90	85	91	77	76	70	65	89	
	80.3	89	86	83	85	74	73	67	62	84	
	60.0	86	82	81	80	71	70	67	65	80	
	58.1	86	82	81	79	71	70	67	66	80	
2600	94.3	96	95	91	92	85	85	79	76	93	
	79.9	96	92	89	89	83	83	76	73	90	
	59.8	94	88	85	85	79	79	76	75	87	
	57.9	91	87	85	84	78	79	76	76	86	
3500	94.3	101	103	100	98	95	92	88	84	100	
	79.9	101	101	97	96	92	89	85	81	98	
	59.8	99	98	93	92	88	86	84	82	94	
	57.9	96	97	93	91	88	85	84	82	94	

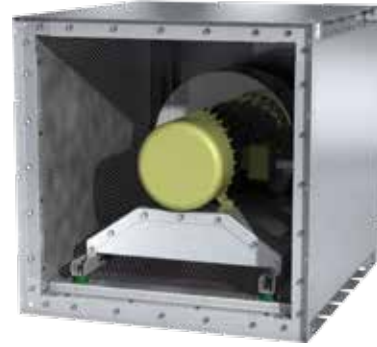
Performance certified is for installation type A: Free inlet, Free outlet. Power rating (Bhp) does not include transmission losses. Performance ratings do not include the effects of appurtenances (accessories).

Values shown are for inlet L_{Wi}, L_{WiA} and outlet L_{Wo}, L_{WoA} sound power levels for installation Type A: Free inlet, Free outlet. The A-weighted sound ratings shown have been calculated per AMCA International Standard 301. The AMCA International Certified Ratings Seal for Sound for model HPA applies to the single L_{WiA} and L_{WoA} values.

Plenum Size 18 - Standard

Maximum RPM	3500
HPA Motor on Frame Limit	254T
Wheel Diameter	18.25 [in.] 464 [mm]
Peak Power	(rpm / 1318) ³ [hp] (rpm / 1454) ³ [kW]
Outlet Velocity	cfm / 6.30 [ft/min] m ³ /hr / 2108 [m/s]
Tip Speed	rpm x 4.78 [ft/min] rpm x 0.0243 [m/s]
% Wide Open Volume (%WVO)	cfm / (rpm x 0.0332) [%] m ³ /hr / (rpm x 0.0564) [%]

Imperial data — Metric data



CFM	OV	STATIC PRESSURE (in. wg)													
		1.0		2.0		3.0		4.0		5.0		6.0		7.0	
		RPM	BHP	RPM	BHP	RPM	BHP	RPM	BHP	RPM	BHP	RPM	BHP	RPM	BHP
4500	714	1616	1.54	1804	2.41	1989	3.37	2155	4.35						
4955	786	1739	1.86	1918	2.80	2087	3.82	2246	4.90	2395	5.97				
5409	858	1865	2.24	2034	3.24	2186	4.32	2342	5.46	2484	6.64	2620	7.81		
5864	930	1988	2.66	2152	3.74	2297	4.88	2440	6.08	2579	7.34	2709	8.62	2834	9.89
6318	1002	2108	3.13	2273	4.30	2412	5.50	2541	6.76	2677	8.08	2803	9.45	2923	10.83
6773	1074	2229	3.65	2396	4.92	2529	6.19	2653	7.51	2776	8.89	2900	10.32	3017	11.80
7227	1146	2352	4.25	2521	5.61	2647	6.96	2768	8.34	2880	9.77	2999	11.26	3114	12.80
7682	1219	2475	4.91	2646	6.38	2769	7.79	2884	9.24	2994	10.74	3099	12.28	3212	13.88
8136	1291	2599	5.65	2771	7.22	2891	8.70	3002	10.23	3109	11.79	3209	13.39	3312	15.05
8591	1363	2729	6.47	2890	8.11	3015	9.70	3122	11.30	3225	12.92	3324	14.59	3417	16.30
9045	1435	2859	7.37	3011	9.08	3140	10.79	3244	12.45	3343	14.15	3439	15.88		
9500	1507	2990	8.36	3132	10.15	3267	11.97	3367	13.70	3463	15.47				

RPM	% WOV	Inlet Sound Power, L _{Wi} [dB ref 10 ⁻¹² watts]									L _{WA}
		1	2	3	4	5	6	7	8		
1000	99.6	83	80	82	73	62	60	54	45	76	
	80.6	82	80	76	70	59	56	50	43	72	
	60.5	81	78	73	67	58	56	52	46	69	
	54	77	77	72	67	59	58	54	49	69	
1400	99.8	87	87	91	79	76	70	66	56	84	
	79.9	88	84	85	78	71	68	61	54	80	
	60.8	85	82	82	75	70	67	62	57	78	
	53.5	82	81	81	74	70	67	63	59	77	
1770	99.7	85	83	95	95	82	80	74	68	94	
	80.3	86	84	93	92	77	76	69	64	91	
	59.9	81	80	89	88	73	73	67	62	86	
	55.6	79	79	87	86	72	72	66	62	85	
1900	99.8	84	87	91	102	84	83	77	72	99	
	80.3	84	85	89	98	80	79	72	66	95	
	60.2	79	87	88	96	77	76	69	64	94	
	54.4	79	87	87	96	75	74	69	64	93	
2600	99.9	91	89	94	100	91	91	86	82	100	
	79.9	89	88	93	101	88	89	82	76	99	
	59.9	87	83	91	96	84	84	79	74	95	
	54.2	85	81	91	96	82	82	78	73	94	
3500	99.9	96	99	100	105	102	98	95	90	106	
	79.9	95	97	99	105	100	95	91	85	105	
	59.9	92	93	95	101	96	91	88	82	101	
	54.2	91	92	94	100	95	89	86	81	100	

RPM	% WOV	Outlet Sound Power, L _{Wo} [dB ref 10 ⁻¹² watts]								
		1	2	3	4	5	6	7	8	L _{WoA}
1000	99.6	85	81	74	64	58	57	48	45	70
	80.3	84	78	73	63	56	53	47	44	68
	59.4	81	73	70	60	53	51	49	45	65
	54.9	77	73	68	59	53	52	49	46	64
1400	99.8	83	80	81	72	70	68	62	53	77
	79.9	86	81	80	70	67	64	56	50	75
	59.9	85	79	79	68	65	62	57	55	74
	56.3	86	79	77	67	63	60	57	56	73
1770	99.9	88	83	85	84	81	77	68	60	86
	80.2	86	83	83	80	74	72	64	57	81
	60.1	84	78	81	78	70	69	65	62	79
	55.1	85	77	81	77	69	68	65	64	78
1900	94.1	89	85	84	92	79	77	70	63	90
	80.3	86	83	82	85	76	74	66	60	84
	59.8	85	79	81	81	72	71	66	64	81
	54.1	83	80	81	79	71	70	67	65	80
2600	94.1	97	91	90	92	87	87	79	74	93
	79.5	95	90	87	90	84	84	76	71	91
	59.9	92	86	83	85	79	79	75	74	86
	54.1	90	87	83	84	78	78	75	74	86
3500	94.1	102	102	97	98	96	93	89	83	101
	79.5	100	100	95	95	93	91	86	79	98
	59.9	98	97	92	91	88	86	83	81	94
	54.1	95	96	91	90	87	84	83	81	93

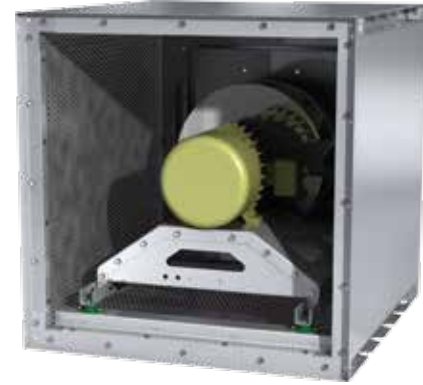
Performance certified is for installation type A: Free inlet, Free outlet. Power rating (Bhp) does not include transmission losses. Performance ratings do not include the effects of appurtenances (accessories).

Values shown are for inlet L_{Wi}, L_{WiA} and outlet L_{Wo}, L_{WoA} sound power levels for installation Type A: Free inlet, Free outlet. The A-weighted sound ratings shown have been calculated per AMCA International Standard 301. The AMCA International Certified Ratings Seal for Sound for model HPA applies to the single L_{WiA} and L_{WoA} values.

Plenum Size 18 - Large

Maxium RPM	3500
HPA Motor on Frame Limit	254T
Wheel Diameter	18.25 [in.] 464 [mm]
Peak Power	(rpm / 1326) ³ [hp] (rpm / 1462) ³ [kW]
Outlet Velocity	cfm / 7.56 [ft/min] m ³ /hr / 2529 [m/s]
Tip Speed	rpm x 4.78 [ft/min] rpm x 0.0243 [m/s]
% Wide Open Volume (%WOV)	cfm / (rpm x 0.0339) [%] m ³ /hr / (rpm x 0.0576) [%]

Imperial data — Metric data



CFM	OV	STATIC PRESSURE (in. wg)													
		1.0		2.0		3.0		4.0		5.0		6.0		7.0	
		RPM	BHP	RPM	BHP	RPM	BHP	RPM	BHP	RPM	BHP	RPM	BHP	RPM	BHP
4500	595	1607	1.51	1813	2.40	1998	3.37	2167	4.34						
4955	655	1719	1.82	1919	2.78	2096	3.81	2258	4.88	2408	5.96				
5409	715	1834	2.16	2032	3.21	2197	4.29	2353	5.45	2498	6.62	2634	7.81		
5864	775	1951	2.56	2147	3.69	2301	4.83	2452	6.06	2591	7.33	2725	8.59	2850	9.88
6318	835	2070	3.01	2261	4.23	2412	5.44	2554	6.72	2689	8.06	2816	9.43	2940	10.79
6773	896	2191	3.51	2373	4.81	2526	6.11	2657	7.45	2790	8.85	2913	10.30	3031	11.77
7227	956	2312	4.07	2487	5.46	2641	6.85	2768	8.25	2892	9.71	3013	11.22	3128	12.78
7682	1016	2435	4.70	2602	6.17	2756	7.66	2881	9.13	2997	10.64	3115	12.22	3227	13.84
8136	1076	2559	5.40	2718	6.96	2868	8.52	2996	10.09	3109	11.66	3218	13.29	3328	14.97
8591	1136	2684	6.17	2837	7.81	2981	9.45	3112	11.13	3222	12.77	3326	14.45	3431	16.19
9045	1196	2810	7.02	2956	8.73	3095	10.47	3225	12.22	3337	13.96	3438	15.71		
9500	1256	2938	7.94	3077	9.74	3210	11.57	3337	13.39	3452	15.24				

RPM	% WOV	Inlet Sound Power, L _{Wi} [dB ref 10 ⁻¹² watts]									
		1	2	3	4	5	6	7	8	L _{Wi} A	
1000	99.6	84	80	83	73	63	62	54	50	76	
	79.6	82	78	78	72	59	57	50	45	73	
	60.6	79	75	76	69	58	55	50	45	71	
	52.5	77	74	75	66	57	54	50	46	69	
1400	99.8	87	79	93	81	76	73	68	65	86	
	80.1	87	83	90	79	71	69	63	60	83	
	59.8	86	83	85	77	68	67	60	55	80	
	54.4	82	83	84	76	67	66	60	56	79	
1770	99.7	85	85	97	97	83	80	75	71	96	
	80	86	86	91	91	78	77	70	68	89	
	60.1	83	85	91	89	75	74	67	63	88	
	53.3	81	82	89	88	73	72	67	63	87	
1900	99.7	85	94	91	101	84	83	77	73	99	
	79.7	84	90	89	98	80	79	72	69	95	
	59.9	82	90	88	97	76	76	69	65	94	
	50.4	79	90	86	95	74	73	69	65	93	
2600	99.8	91	92	97	100	92	92	87	83	100	
	80	91	91	95	98	89	89	83	78	98	
	60.2	87	85	92	96	84	85	79	76	95	
	50.3	85	82	91	94	82	83	78	75	93	
3500	99.8	97	100	102	105	102	98	95	91	107	
	80	97	100	101	104	100	95	92	87	105	
	60.2	92	94	97	101	96	91	88	84	101	
	50.3	90	92	95	100	94	89	86	82	100	

RPM	% WOV	Outlet Sound Power, L _{Wo} [dB ref 10 ⁻¹² watts]									
		1	2	3	4	5	6	7	8	L _{Wo} A	
1000	99.6	84	78	75	64	61	58	50	45	70	
	80.5	84	76	73	62	58	53	47	44	68	
	60.6	82	74	70	60	55	53	51	47	66	
	53.9	84	74	69	59	55	53	51	48	66	
1400	99.8	87	80	80	73	72	69	63	54	78	
	80.3	88	81	79	70	69	65	57	51	75	
	60.5	86	81	77	67	67	63	59	56	74	
	55.6	85	80	77	67	67	63	60	58	73	
1770	94.4	86	83	85	85	79	76	69	62	86	
	80	85	81	82	81	75	73	65	59	82	
	59.6	84	80	81	77	72	70	66	64	79	
	55.2	84	79	80	76	71	69	66	65	78	
1900	94.4	87	84	83	89	81	79	72	66	88	
	79.9	86	83	81	85	77	75	67	61	84	
	60	83	80	79	79	74	72	67	66	80	
	54	82	79	79	79	73	71	69	67	80	
2600	94.4	96	90	89	93	90	89	81	76	95	
	79.8	95	90	87	90	86	85	77	71	92	
	59.9	93	88	84	86	82	81	76	74	88	
	54.1	91	85	83	85	81	80	77	75	87	
3500	94.4	101	100	96	98	98	96	91	84	102	
	79.8	100	100	95	95	94	92	87	80	99	
	59.9	98	98	93	92	90	88	85	81	96	
	54.1	96	95	91	91	89	87	85	82	95	

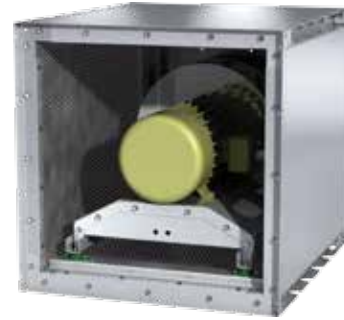
Performance certified is for installation type A: Free inlet, Free outlet. Power rating (Bhp) does not include transmission losses. Performance ratings do not include the effects of appurtenances (accessories).

Values shown are for inlet L_{Wi}, L_{Wi}A and outlet L_{Wo}, L_{Wo}A sound power levels for installation Type A: Free inlet, Free outlet. The A-weighted sound ratings shown have been calculated per AMCA International Standard 301. The AMCA International Certified Ratings Seal for Sound for model HPA applies to the single L_{Wi}A and L_{Wo}A values.

Plenum Size 20 - Compact

Maxium RPM	3409
HPA Motor on Frame Limit	254T
Wheel Diameter	20.00 [in.] 508 [mm]
Peak Power	(rpm / 1130) ³ [hp] (rpm / 1245) ³ [kW]
Outlet Velocity	cfm / 6.30 [ft/min] m ³ /hr / 2108 [m/s]
Tip Speed	rpm x 5.24 [ft/min] rpm x 0.0266 [m/s]
% Wide Open Volume (%WOV)	cfm / (rpm x 0.0427) [%] m ³ /hr / (rpm x 0.0726) [%]

Imperial data — [Metric data](#)



CFM	OV	STATIC PRESSURE (in. wg)																	
		1.0		2.0		3.0		4.0		5.0		6.0		7.0		8.0		9.0	
		RPM	BHP	RPM	BHP	RPM	BHP	RPM	BHP	RPM	BHP	RPM	BHP	RPM	BHP	RPM	BHP	RPM	BHP
6000	952	1605	2.41	1774	3.60	1932	4.88	2079	6.20	2217	7.55								
6545	1038	1719	2.88	1877	4.16	2025	5.53	2168	6.95	2299	8.41	2425	9.88						
7091	1125	1835	3.43	1985	4.80	2125	6.25	2258	7.77	2387	9.31	2506	10.91	2622	12.49				
7636	1211	1953	4.05	2095	5.52	2227	7.04	2353	8.65	2476	10.29	2593	11.97	2703	13.70	2811	15.40		
8182	1298	2071	4.75	2207	6.32	2331	7.92	2453	9.61	2567	11.36	2682	13.12	2790	14.93	2892	16.78	2994	18.60
8727	1384	2191	5.54	2320	7.21	2439	8.89	2554	10.66	2665	12.49	2772	14.37	2879	16.25	2980	18.19	3076	20.16
9273	1471	2311	6.42	2434	8.19	2550	9.97	2657	11.80	2765	13.72	2867	15.69	2969	17.68	3068	19.69	3163	21.75
9818	1557	2432	7.41	2550	9.26	2661	11.14	2765	13.06	2867	15.04	2967	17.10	3061	19.21	3158	21.31	3252	23.45
10364	1644	2553	8.49	2667	10.44	2774	12.43	2874	14.43	2970	16.48	3068	18.62	3160	20.81	3249	23.05		
10909	1730	2675	9.68	2785	11.72	2887	13.83	2985	15.91	3078	18.04	3170	20.25	3261	22.52	3348	24.84		
11455	1817	2798	10.99	2904	13.13	3002	15.32	3097	17.51	3187	19.73	3273	22.00	3362	24.35				
12000	1903	2920	12.42	3023	14.65	3118	16.94	3209	19.25	3297	21.55	3381	23.90						

RPM	% WOV	Inlet Sound Power, L _{Wi} [dB ref 10 ⁻¹² watts]									L _{WA}
		1	2	3	4	5	6	7	8		
1000	99.6	85	86	85	76	64	64	56	51	79	
	80.1	84	83	82	75	62	59	52	47	77	
	60.4	80	81	79	73	61	58	52	48	74	
	54.8	78	80	79	71	60	58	53	49	74	
1400	99.8	85	87	97	84	78	75	71	67	89	
	79	89	89	95	83	73	71	64	59	87	
	59.7	88	86	88	80	71	69	63	58	82	
	54	86	84	88	80	70	69	63	58	82	
1770	99.9	90	89	97	96	85	82	77	72	95	
	79.5	93	90	94	93	80	79	72	68	92	
	61.3	89	87	92	91	77	77	70	65	90	
	57.8	87	84	92	90	76	76	70	65	89	
1900	99.9	90	91	95	102	86	84	79	74	100	
	80.3	91	92	94	99	82	81	74	70	97	
	59.8	88	87	92	97	79	79	72	67	94	
	57.7	88	91	92	96	78	78	72	66	94	
2600	99.9	97	96	101	102	94	94	88	84	102	
	80.4	97	97	99	101	91	91	85	79	100	
	59.9	93	91	96	100	88	88	83	77	98	
	57.7	94	92	97	98	87	88	82	77	97	
3409	99.9	102	104	106	108	103	100	96	91	109	
	80.4	102	104	105	106	101	97	93	87	107	
	59.9	97	99	101	105	98	94	91	85	104	
	57.7	99	100	102	104	98	93	90	85	104	

RPM	% WOV	Outlet Sound Power, L _{Wo} [dB ref 10 ⁻¹² watts]								
		1	2	3	4	5	6	7	8	L _{WoA}
1000	94.3	88	85	78	66	59	58	52	53	74
	80.1	86	83	77	64	57	54	50	52	72
	59.8	85	85	74	63	55	54	51	50	72
	57.4	84	85	72	62	55	54	52	51	71
1400	99.8	88	86	84	74	71	68	64	56	79
	80.2	89	87	83	72	68	66	58	54	78
	60.3	87	83	81	69	67	64	59	58	76
	55.5	87	81	81	69	66	64	60	59	75
1770	99.9	92	88	88	86	78	76	71	64	87
	79.7	93	88	86	83	75	73	67	61	84
	60.1	90	84	83	79	72	71	67	66	81
	56.2	88	83	82	78	71	70	68	66	80
1900	94.3	92	93	88	93	80	79	73	68	92
	80.3	93	89	86	87	77	75	69	64	87
	60.0	89	85	84	83	74	73	69	68	83
	58.1	90	85	83	82	73	73	70	69	83
2600	94.3	99	98	94	94	88	88	82	79	96
	79.9	99	95	92	92	86	85	79	76	93
	59.8	97	91	88	88	82	82	79	77	90
	57.9	94	90	88	87	81	82	79	78	89
3409	94.3	104	106	102	100	97	94	90	86	103
	79.9	104	104	99	98	94	91	87	83	100
	59.8	102	100	96	94	90	88	86	84	97
	57.9	99	99	95	93	90	87	86	84	96

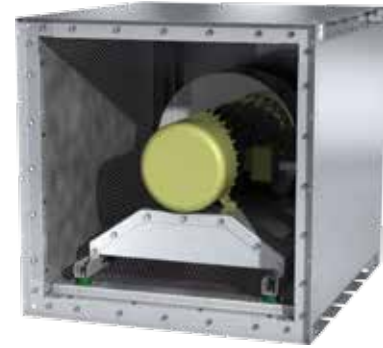
Performance certified is for installation type A: Free inlet, Free outlet. Power rating (Bhp) does not include transmission losses. Performance ratings do not include the effects of appurtenances (accessories).

Values shown are for inlet L_{Wi}, L_{WiA} and outlet L_{Wo}, L_{WoA} sound power levels for installation Type A: Free inlet, Free outlet. The A-weighted sound ratings shown have been calculated per AMCA International Standard 301. The AMCA International Certified Ratings Seal for Sound for model HPA applies to the single L_{WiA} and L_{WoA} values.

Plenum Size 20 - Standard

Maximum RPM	3409
HPA Motor on Frame Limit	254T
Wheel Diameter	20.00 [in.] 508 [mm]
Peak Power	(rpm / 1132) ³ [hp] (rpm / 1248) ³ [kW]
Outlet Velocity	cfm / 7.56 [ft/min] m ³ /hr / 2529 [m/s]
Tip Speed	rpm x 5.24 [ft/min] rpm x 0.0266 [m/s]
% Wide Open Volume (%WOV)	cfm / (rpm x 0.0437) [%] m ³ /hr / (rpm x 0.0743) [%]

Imperial data — [Metric data](#)



CFM	OV	STATIC PRESSURE (in. wg)																	
		1.0		2.0		3.0		4.0		5.0		6.0		7.0		8.0		9.0	
		RPM	BHP	RPM	BHP	RPM	BHP	RPM	BHP	RPM	BHP	RPM	BHP	RPM	BHP	RPM	BHP	RPM	BHP
6000	793	1598	2.28	1759	3.41	1912	4.64	2057	5.94	2192	7.24								
6545	866	1712	2.73	1865	3.95	2003	5.24	2145	6.62	2275	8.06	2398	9.47						
7091	938	1824	3.24	1973	4.55	2105	5.92	2235	7.37	2361	8.89	2480	10.44	2593	11.97				
7636	1010	1933	3.81	2084	5.23	2210	6.68	2327	8.19	2450	9.79	2566	11.44	2675	13.11	2780	14.76		
8182	1082	2044	4.45	2196	5.98	2317	7.52	2430	9.11	2541	10.76	2654	12.49	2760	14.27	2862	16.06	2961	17.82
8727	1154	2156	5.17	2310	6.82	2425	8.44	2535	10.11	2637	11.83	2744	13.63	2849	15.49	2948	17.39	3043	19.30
9273	1226	2268	5.97	2425	7.75	2536	9.45	2641	11.20	2741	13.00	2836	14.86	2939	16.79	3036	18.77	3129	20.79
9818	1298	2382	6.86	2538	8.76	2648	10.55	2749	12.39	2846	14.27	2937	16.20	3030	18.19	3126	20.25	3218	22.35
10364	1370	2500	7.86	2647	9.84	2761	11.76	2858	13.68	2952	15.64	3042	17.65	3127	19.71	3217	21.83	3307	24.00
10909	1443	2619	8.95	2756	11.01	2875	13.07	2970	15.07	3060	17.12	3147	19.21	3231	21.34	3311	23.52		
11455	1515	2739	10.14	2867	12.30	2990	14.49	3082	16.58	3169	18.72	3254	20.88	3336	23.09				
12000	1587	2858	11.45	2978	13.69	3104	16.02	3195	18.20	3280	20.42	3362	22.68						

RPM	% WOV	Inlet Sound Power, L _{Wi} [dB ref 10 ⁻¹² watts]									
		1	2	3	4	5	6	7	8	L _{WiA}	
1000	99.6	86	84	85	76	65	63	57	48	79	
	80.6	86	83	79	73	62	59	53	46	75	
	60.5	85	81	76	70	61	59	54	49	72	
	54	80	80	75	70	62	61	57	52	72	
1400	99.8	91	90	94	82	78	73	69	59	87	
	79.9	91	88	88	81	74	70	63	57	83	
	60.8	89	86	85	78	73	69	64	60	81	
	53.5	85	85	84	77	73	70	66	62	80	
1770	99.7	89	86	98	98	85	83	77	71	97	
	80.3	90	88	96	95	80	79	72	67	94	
	59.9	84	83	92	90	76	76	69	64	89	
	55.6	82	82	90	88	75	75	69	65	88	
1900	99.8	87	90	94	105	87	85	79	74	102	
	80.3	88	89	92	101	83	82	74	69	98	
	60.2	83	90	91	99	79	78	72	67	96	
	54.4	82	90	90	99	78	77	71	67	96	
2600	99.9	95	93	97	103	94	94	89	84	102	
	79.9	93	91	96	104	91	91	85	79	102	
	59.9	90	86	94	99	87	87	82	77	97	
	54.2	89	85	94	98	85	85	80	76	97	
3409	99.9	99	101	102	107	104	100	97	92	108	
	79.9	98	99	101	107	102	97	93	87	107	
	59.9	95	96	98	103	98	93	90	85	103	
	54.2	94	94	97	103	96	91	88	83	102	

RPM	% WOV	Outlet Sound Power, L _{Wo} [dB ref 10 ⁻¹² watts]									
		1	2	3	4	5	6	7	8	L _{WoA}	
1000	99.6	89	84	77	67	61	59	51	48	73	
	80.3	87	81	76	65	59	55	50	47	71	
	59.4	84	76	73	63	56	54	51	48	68	
	54.9	80	76	71	62	56	54	52	49	67	
1400	99.8	87	83	84	75	73	70	65	56	80	
	79.9	89	84	83	73	70	67	58	53	78	
	59.9	89	82	81	71	68	65	60	58	76	
	56.3	89	82	80	70	66	63	60	58	75	
1770	99.9	92	86	88	87	84	80	71	63	89	
	80.2	89	86	86	83	76	75	66	60	84	
	60.1	87	81	84	80	73	72	67	65	82	
	55.1	88	80	84	80	72	71	68	66	81	
1900	94.1	92	88	87	95	81	80	73	66	93	
	80.3	90	86	85	88	78	77	69	62	87	
	59.8	88	82	84	84	75	74	69	67	84	
	54.1	86	83	83	82	73	73	70	68	83	
2600	94.1	100	94	93	95	90	90	82	77	96	
	79.5	98	93	90	92	87	87	79	74	94	
	59.9	96	89	86	88	82	82	78	76	89	
	54.1	93	90	86	87	81	80	78	77	88	
3409	94.1	105	104	100	100	98	96	91	85	103	
	79.5	103	102	98	97	95	93	88	81	100	
	59.9	100	99	94	93	90	88	85	83	96	
	54.1	98	98	93	92	89	86	85	83	95	

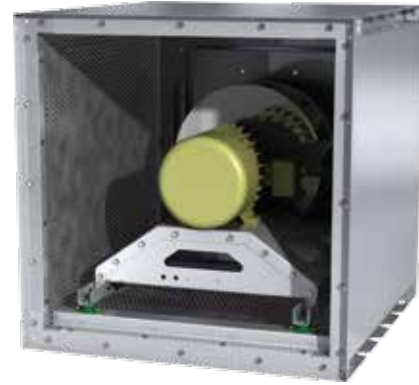
Performance certified is for installation type A: Free inlet, Free outlet. Power rating (Bhp) does not include transmission losses. Performance ratings do not include the effects of appurtenances (accessories).

Values shown are for inlet L_{Wi}, L_{WiA} and outlet L_{Wo}, L_{WoA} sound power levels for installation Type A: Free inlet, Free outlet. The A-weighted sound ratings shown have been calculated per AMCA International Standard 301. The AMCA International Certified Ratings Seal for Sound for model HPA applies to the single L_{WiA} and L_{WoA} values.

Plenum Size 20 - Large

Maxium RPM	3409
HPA Motor on Frame Limit	254T
Wheel Diameter	20.00 [in.] 508 [mm]
Peak Power	(rpm / 1138) ³ [hp] (rpm / 1255) ³ [kW]
Outlet Velocity	cfm / 9.38 [ft/min] m ³ /hr / 3137 [m/s]
Tip Speed	rpm x 5.24 [ft/min] rpm x 0.0266 [m/s]
% Wide Open Volume (%WOV)	cfm / (rpm x 0.0446) [%] m ³ /hr / (rpm x 0.0759) [%]

Imperial data — [Metric data](#)



CFM	OV	STATIC PRESSURE (in. wg)																	
		1.0		2.0		3.0		4.0		5.0		6.0		7.0		8.0		9.0	
		RPM	BHP	RPM	BHP	RPM	BHP	RPM	BHP	RPM	BHP	RPM	BHP	RPM	BHP	RPM	BHP	RPM	BHP
6000	640	1578	2.22	1760	3.38	1921	4.62	2068	5.92	2205	7.23								
6545	698	1683	2.64	1863	3.90	2014	5.21	2155	6.61	2287	8.02	2411	9.46						
7091	756	1790	3.12	1968	4.49	2108	5.87	2246	7.34	2372	8.88	2494	10.40	2608	11.96				
7636	814	1899	3.66	2072	5.13	2210	6.60	2338	8.14	2462	9.76	2577	11.42	2690	13.06	2796	14.74		
8182	872	2009	4.27	2175	5.84	2314	7.42	2433	9.02	2554	10.71	2666	12.47	2774	14.24	2878	16.00	2978	17.79
8727	931	2120	4.95	2278	6.62	2419	8.31	2535	10.00	2647	11.75	2758	13.58	2862	15.46	2962	17.35	3060	19.22
9273	989	2232	5.71	2383	7.49	2523	9.29	2638	11.06	2744	12.88	2850	14.78	2953	16.73	3050	18.74	3144	20.75
9818	1047	2345	6.56	2490	8.44	2625	10.32	2743	12.22	2846	14.11	2944	16.07	3045	18.10	3141	20.18	3232	22.31
10364	1105	2458	7.49	2598	9.47	2729	11.45	2849	13.47	2949	15.45	3044	17.48	3139	19.57	3233	21.73	3323	23.93
10909	1163	2574	8.51	2707	10.59	2833	12.68	2951	14.79	3054	16.89	3146	18.99	3235	21.15	3326	23.38		
11455	1221	2691	9.63	2817	11.80	2938	14.01	3054	16.21	3159	18.43	3250	20.62	3336	22.85				
12000	1279	2807	10.85	2928	13.12	3044	15.44	3157	17.73	3263	20.07	3355	22.36						

RPM	% WOV	Inlet Sound Power, L _{Wi} [dB ref 10 ⁻¹² watts]									
		1	2	3	4	5	6	7	8	L _{WA}	
1000	99.6	87	84	86	76	65	65	57	53	79	
	79.6	85	81	81	75	62	60	53	48	76	
	60.6	83	79	79	72	61	58	52	48	74	
	52.5	80	77	78	69	60	57	53	49	72	
1400	99.8	90	83	96	84	79	76	71	67	89	
	80.1	91	86	93	82	74	72	65	63	86	
	59.8	89	86	88	80	71	69	63	58	83	
	54.4	85	87	87	78	70	68	63	59	81	
1770	99.7	88	89	100	100	85	83	78	74	99	
	80	89	89	94	93	81	79	73	71	92	
	60.1	87	88	94	92	77	77	70	66	91	
	53.3	84	85	92	91	76	75	69	66	90	
1900	99.7	88	98	94	104	87	85	80	75	101	
	79.7	88	93	92	101	83	81	75	72	98	
	59.9	85	93	91	100	79	78	72	68	97	
	50.4	82	93	89	98	77	76	71	68	96	
2600	99.8	95	95	100	103	94	95	90	85	103	
	80	95	94	98	101	92	92	86	81	101	
	60.2	90	88	95	99	87	88	82	79	98	
	50.3	88	85	94	97	85	85	80	78	96	
3409	99.8	100	103	105	108	104	101	97	93	109	
	80	100	102	103	106	102	98	94	89	107	
	60.2	95	97	99	104	98	94	90	86	104	
	50.3	93	94	97	102	96	91	88	85	102	

RPM	% WOV	Outlet Sound Power, L _{Wo} [dB ref 10 ⁻¹² watts]									L _{WoA}
		1	2	3	4	5	6	7	8		
1000	99.6	87	81	78	67	64	61	52	48	73	
	80.5	87	79	76	65	60	56	50	47	71	
	60.6	86	78	73	63	58	55	53	50	69	
	53.9	87	77	72	62	57	55	54	51	69	
1400	99.8	91	83	83	75	75	72	66	57	80	
	80.3	92	84	82	72	72	68	60	54	78	
	60.5	90	84	80	70	70	66	62	59	77	
	55.6	88	83	80	70	70	66	62	60	76	
1770	94.4	90	86	88	88	81	79	72	64	88	
	80	89	85	85	84	78	76	68	61	85	
	59.6	87	83	83	80	75	73	68	66	82	
	55.2	87	82	83	78	74	72	69	67	81	
1900	94.4	91	87	86	92	84	82	75	68	91	
	79.9	90	86	84	88	80	78	70	64	87	
	60	86	83	82	82	76	74	70	69	83	
	54	85	82	82	82	75	74	71	70	83	
2600	94.4	99	93	92	96	93	92	84	79	98	
	79.8	99	93	90	92	89	88	80	74	94	
	59.9	97	91	87	89	85	84	79	77	91	
	54.1	94	88	86	88	84	83	79	77	90	
3409	94.4	104	102	98	100	100	98	93	86	104	
	79.8	103	102	97	97	96	94	89	82	101	
	59.9	101	100	95	94	93	90	87	83	98	
	54.1	99	97	93	93	91	89	87	84	97	

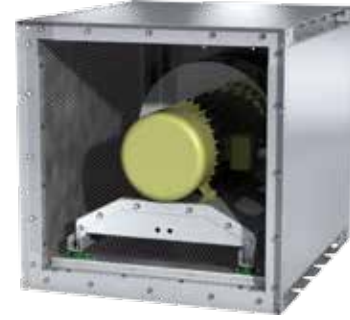
Performance certified is for installation type A: Free inlet, Free outlet. Power rating (Bhp) does not include transmission losses. Performance ratings do not include the effects of appurtenances (accessories).

Values shown are for inlet L_{Wi}, L_{WiA} and outlet L_{Wo}, L_{WoA} sound power levels for installation Type A: Free inlet, Free outlet. The A-weighted sound ratings shown have been calculated per AMCA International Standard 301. The AMCA International Certified Ratings Seal for Sound for model HPA applies to the single L_{WiA} and L_{WoA} values.

Plenum Size 22 - Compact

Maxium RPM	3065
HPA Motor on Frame Limit	256T
Wheel Diameter	22.25 [in.] 565 [mm]
Peak Power	(rpm / 946) ³ [hp] (rpm / 1043) ³ [kW]
Outlet Velocity	cfm / 7.56 [ft/min] m ³ /hr / 2529 [m/s]
Tip Speed	rpm x 5.83 [ft/min] rpm x 0.0296 [m/s]
% Wide Open Volume (%WOV)	cfm / (rpm x 0.0588) [%] m ³ /hr / (rpm x 0.0999) [%]

Imperial data — Metric data



CFM	OV	STATIC PRESSURE (in. wg)													
		1.0		2.0		3.0		4.0		5.0		6.0		7.0	
		RPM	BHP	RPM	BHP	RPM	BHP	RPM	BHP	RPM	BHP	RPM	BHP	RPM	BHP
7000	926	1379	2.64	1538	4.06	1686	5.57	1821	7.14						
7827	1035	1503	3.32	1649	4.86	1785	6.52	1916	8.21	2036	9.97	2151	11.73		
8655	1144	1631	4.12	1766	5.79	1894	7.57	2015	9.42	2131	11.31	2239	13.27	2344	15.20
9482	1254	1760	5.05	1888	6.87	2006	8.76	2119	10.76	2229	12.80	2334	14.88	2433	17.02
10309	1363	1891	6.14	2011	8.11	2121	10.11	2229	12.23	2331	14.43	2433	16.64	2529	18.91
11136	1473	2023	7.39	2136	9.51	2242	11.65	2342	13.87	2440	16.20	2533	18.60		
11964	1582	2156	8.82	2263	11.08	2364	13.37	2458	15.71	2552	18.15				
12791	1691	2289	10.43	2392	12.84	2488	15.30	2579	17.76						
13618	1801	2424	12.25	2522	14.80	2613	17.42	2700	20.02						
14445	1910	2559	14.29	2653	16.98	2740	19.74	2824	22.51						
15273	2020	2694	16.55	2784	19.39	2868	22.29								
16100	2129	2830	19.06	2917	22.05										

RPM	% WOV	Inlet Sound Power, L _{Wi} [dB ref 10 ⁻¹² watts]									
		1	2	3	4	5	6	7	8	L _{WiA}	
1000	99.6	89	89	88	80	67	67	60	55	82	
	80.1	88	87	86	78	65	62	55	50	80	
	60.4	84	85	82	76	64	61	56	51	77	
	54.8	82	84	83	75	64	61	56	52	77	
1400	99.8	89	91	100	87	81	78	74	70	93	
	79	93	93	98	86	76	74	67	62	91	
	59.7	92	90	91	84	74	73	66	62	86	
	54	90	88	91	83	73	72	66	62	85	
1770	99.9	94	93	100	99	88	86	80	76	98	
	79.5	97	94	97	96	83	82	75	71	95	
	61.3	93	91	95	94	80	80	74	68	93	
	57.8	91	88	95	94	79	79	73	68	93	
1900	99.9	94	95	99	105	89	87	82	78	103	
	80.3	95	96	98	102	85	84	78	73	100	
	59.8	92	90	95	100	82	82	76	70	98	
	57.7	92	95	95	100	81	82	75	70	97	
2600	99.9	101	100	104	105	97	97	91	87	105	
	80.4	101	100	102	104	94	94	88	83	103	
	59.9	97	95	100	103	91	91	86	81	102	
	57.7	98	96	100	101	90	91	86	80	101	
3065	99.9	104	105	107	109	103	101	96	92	109	
	80.4	104	105	106	107	100	98	93	87	107	
	59.9	100	100	103	106	97	95	91	85	105	
	57.7	101	101	103	105	97	94	90	85	104	

RPM	% WOV	Outlet Sound Power, L _{Wo} [dB ref 10 ⁻¹² watts]									
		1	2	3	4	5	6	7	8	L _{WoA}	
1000	94.3	92	89	81	69	63	61	55	56	77	
	80.1	90	87	81	67	60	57	53	55	76	
	59.8	89	88	77	66	59	57	54	54	75	
	57.4	88	89	76	66	58	57	55	54	75	
1400	99.8	91	90	87	77	74	72	67	59	83	
	80.2	92	90	86	75	72	69	62	57	81	
	60.3	91	87	84	73	70	68	63	61	79	
	55.5	91	84	84	72	70	67	63	62	79	
1770	99.9	96	92	92	89	81	79	74	67	90	
	79.7	97	91	90	86	78	76	70	65	87	
	60.1	94	88	87	82	75	74	70	69	84	
	56.2	92	86	86	81	74	73	71	69	83	
1900	94.3	96	97	91	97	83	82	76	71	95	
	80.3	97	93	89	91	80	79	73	68	90	
	60.0	93	89	87	86	77	76	73	71	86	
	58.1	94	89	87	85	77	76	73	72	86	
2600	94.3	103	101	97	98	91	91	85	82	99	
	79.9	103	98	95	95	89	89	82	79	96	
	59.8	101	94	91	91	85	85	82	81	93	
	57.9	98	94	91	90	84	85	82	82	92	
3065	94.3	106	106	102	101	97	95	90	87	103	
	79.9	106	104	100	99	94	92	87	83	101	
	59.8	104	100	96	95	90	89	86	85	97	
	57.9	101	99	95	94	89	88	86	85	97	

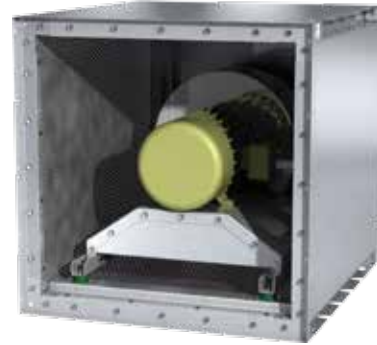
Performance certified is for installation type A: Free inlet, Free outlet. Power rating (Bhp) does not include transmission losses. Performance ratings do not include the effects of appurtenances (accessories).

Values shown are for inlet L_{Wi}, L_{WiA} and outlet L_{Wo}, L_{WoA} sound power levels for installation Type A: Free inlet, Free outlet. The A-weighted sound ratings shown have been calculated per AMCA International Standard 301. The AMCA International Certified Ratings Seal for Sound for model HPA applies to the single L_{WiA} and L_{WoA} values.

Plenum Size 22 - Standard

Maximum RPM	3065
HPA Motor on Frame Limit	256T
Wheel Diameter	22.25 [in.] 565 [mm]
Peak Power	(rpm / 948) ³ [hp] (rpm / 1045) ³ [kW]
Outlet Velocity	cfm / 9.38 [ft/min] m ³ /hr / 3137 [m/s]
Tip Speed	rpm x 5.83 [ft/min] rpm x 0.0296 [m/s]
% Wide Open Volume (%WVO)	cfm / (rpm x 0.0602) [%] m ³ /hr / (rpm x 0.1023) [%]

Imperial data — Metric data



CFM	OV	STATIC PRESSURE (in. wg)													
		1.0		2.0		3.0		4.0		5.0		6.0		7.0	
		RPM	BHP	RPM	BHP	RPM	BHP	RPM	BHP	RPM	BHP	RPM	BHP	RPM	BHP
7000	746	1372	2.50	1522	3.85	1668	5.31	1802	6.83						
7827	835	1497	3.14	1638	4.61	1767	6.17	1896	7.84	2014	9.55	2126	11.26		
8655	923	1622	3.89	1756	5.49	1876	7.17	1994	8.95	2108	10.81	2215	12.70	2318	14.58
9482	1011	1742	4.75	1878	6.51	1991	8.31	2096	10.19	2206	12.17	2310	14.21	2408	16.29
10309	1099	1864	5.74	2002	7.67	2109	9.60	2210	11.59	2307	13.67	2408	15.83	2503	18.06
11136	1187	1988	6.88	2127	8.99	2229	11.05	2326	13.16	2416	15.35	2508	17.61	2601	19.95
11964	1276	2112	8.18	2254	10.49	2352	12.67	2444	14.91	2531	17.21	2615	19.58	2701	22.02
12791	1364	2242	9.65	2374	12.10	2477	14.47	2564	16.84	2648	19.27	2729	21.75	2806	24.29
13618	1452	2373	11.32	2495	13.89	2602	16.47	2687	18.97	2767	21.52	2845	24.12		
14445	1540	2504	13.18	2617	15.89	2729	18.68	2811	21.30	2888	23.98				
15273	1628	2637	15.25	2740	18.09	2850	21.04	2936	23.86						
16100	1717	2769	17.55	2864	20.50	2971	23.60								

RPM	% WOV	Inlet Sound Power, L _{Wi} [dB ref 10 ⁻¹² watts]										L _{WiA}
		1	2	3	4	5	6	7	8			
1000	99.6	90	87	88	80	68	66	60	51	82		
	80.6	90	87	83	76	65	62	56	49	78		
	60.5	89	85	79	73	64	62	58	52	76		
	54	84	84	78	73	65	64	60	55	75		
1400	99.8	95	94	97	85	82	76	72	62	91		
	79.9	95	92	92	84	77	74	67	60	87		
	60.8	93	89	89	81	76	73	68	63	84		
	53.5	89	88	88	80	76	73	69	65	84		
1770	99.7	93	90	101	102	88	86	80	74	100		
	80.3	94	91	99	99	83	82	75	70	97		
	59.9	88	87	95	94	79	79	73	68	93		
	55.6	86	86	94	92	78	78	72	68	91		
1900	99.8	91	94	98	108	90	89	83	78	105		
	80.3	92	92	96	104	86	85	78	72	101		
	60.2	87	94	95	102	83	82	75	70	100		
	54.4	86	94	94	102	81	80	75	70	99		
2600	99.9	99	96	101	106	97	97	92	88	106		
	79.9	97	95	100	107	94	95	88	82	105		
	59.9	94	90	97	102	90	90	85	80	101		
	54.2	93	88	97	102	88	88	84	79	100		
3065	99.9	101	101	104	109	103	101	97	92	109		
	79.9	100	100	103	109	101	98	93	87	108		
	59.9	97	96	100	105	97	94	90	85	104		
	54.2	96	94	99	104	95	92	88	84	103		

RPM	% WOV	Outlet Sound Power, L _{Wo} [dB ref 10 ⁻¹² watts]										L _{WoA}
		1	2	3	4	5	6	7	8			
1000	99.6	92	87	81	70	64	63	54	51	77		
	80.3	91	84	79	69	62	59	53	50	75		
	59.4	88	80	77	66	59	57	55	51	72		
	54.9	84	80	74	65	59	58	55	52	70		
1400	99.8	90	87	88	78	76	74	68	59	83		
	79.9	93	88	86	76	73	70	62	56	81		
	59.9	92	86	85	74	71	68	63	61	80		
	56.3	93	86	83	73	69	66	63	62	79		
1770	99.9	95	90	92	90	87	83	74	66	92		
	80.2	93	89	89	86	80	78	70	63	87		
	60.1	91	85	88	84	76	75	71	68	85		
	55.1	92	84	87	83	75	74	71	70	84		
1900	94.1	96	91	90	98	85	83	76	69	96		
	80.3	93	89	88	91	82	80	72	66	90		
	59.8	92	86	87	87	78	77	72	70	87		
	54.1	90	87	87	85	77	76	73	71	86		
2600	94.1	104	98	96	98	93	93	85	80	99		
	79.5	102	97	93	96	90	90	82	77	97		
	59.9	100	93	90	91	85	85	81	80	93		
	54.1	97	93	89	90	84	84	81	80	92		
3065	94.1	109	107	103	103	101	99	94	88	106		
	79.5	107	106	101	101	98	96	91	85	104		
	59.9	104	102	97	96	93	91	88	86	99		
	54.1	102	102	97	96	92	90	88	87	98		

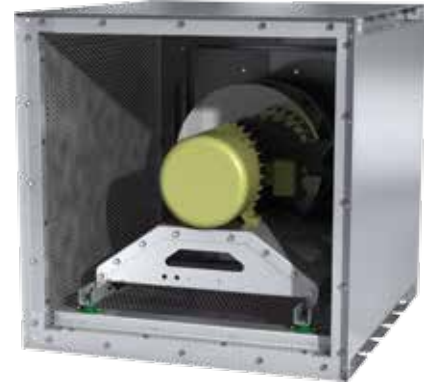
Performance certified is for installation type A: Free inlet, Free outlet. Power rating (Bhp) does not include transmission losses. Performance ratings do not include the effects of appurtenances (accessories).

Values shown are for inlet L_{Wi}, L_{WiA} and outlet L_{Wo}, L_{WoA} sound power levels for installation Type A: Free inlet, Free outlet. The A-weighted sound ratings shown have been calculated per AMCA International Standard 301. The AMCA International Certified Ratings Seal for Sound for model HPA applies to the single L_{WiA} and L_{WoA} values.

Plenum Size 22 - Large

Maximum RPM	3065
HPA Motor on Frame Limit	256T
Wheel Diameter	22.25 [in.] 565 [mm]
Peak Power	(rpm / 953) ³ [hp] (rpm / 1051) ³ [kW]
Outlet Velocity	cfm / 11.39 [ft/min] m ³ /hr / 3810 [m/s]
Tip Speed	rpm x 5.83 [ft/min] rpm x 0.0296 [m/s]
% Wide Open Volume (%WOV)	cfm / (rpm x 0.0615) [%] m ³ /hr / (rpm x 0.1044) [%]

Imperial data — Metric data



CFM	OV	STATIC PRESSURE (in. wg)													
		1.0		2.0		3.0		4.0		5.0		6.0		7.0	
		RPM	BHP	RPM	BHP	RPM	BHP	RPM	BHP	RPM	BHP	RPM	BHP	RPM	BHP
7000	615	1360	2.45	1526	3.82	1676	5.30	1812	6.81						
7827	687	1475	3.04	1637	4.55	1776	6.15	1904	7.84	2026	9.52	2138	11.26		
8655	760	1591	3.75	1752	5.41	1879	7.11	2004	8.92	2118	10.80	2228	12.66	2331	14.57
9482	832	1711	4.56	1867	6.39	1991	8.22	2106	10.13	2217	12.13	2320	14.20	2421	16.23
10309	905	1832	5.50	1980	7.48	2105	9.47	2212	11.48	2318	13.60	2419	15.79	2514	18.05
11136	978	1955	6.58	2095	8.72	2222	10.88	2325	13.01	2422	15.22	2520	17.53	2613	19.90
11964	1050	2079	7.82	2211	10.11	2334	12.41	2439	14.71	2532	17.03	2623	19.44	2714	21.92
12791	1123	2204	9.21	2330	11.65	2448	14.10	2556	16.59	2646	19.03	2731	21.54	2817	24.12
13618	1196	2332	10.77	2450	13.35	2563	15.96	2669	18.60	2761	21.22	2844	23.84		
14445	1268	2460	12.50	2572	15.24	2679	18.02	2782	20.79	2878	23.62				
15273	1341	2589	14.44	2694	17.33	2797	20.27	2896	23.18						
16100	1413	2719	16.57	2818	19.62	2916	22.70								

RPM	% WOV	Inlet Sound Power, L _{Wi} [dB ref 10 ⁻¹² watts]									
		1	2	3	4	5	6	7	8	L _{WfA}	
1000	99.6	91	87	89	79	69	68	60	56	83	
	79.6	89	85	84	78	65	63	56	51	79	
	60.6	87	83	82	76	64	61	56	51	77	
	52.5	84	81	81	73	63	60	56	52	76	
1400	99.8	94	87	100	87	82	79	74	71	93	
	80.1	95	90	96	85	77	75	69	66	89	
	59.8	93	90	92	83	74	73	66	61	86	
	54.4	89	90	91	82	73	72	66	62	85	
1770	99.7	92	93	103	104	89	86	81	77	102	
	80	93	93	98	97	84	83	76	74	96	
	60.1	91	92	97	96	81	80	73	69	94	
	53.3	88	89	95	94	79	78	73	69	93	
1900	99.7	92	101	98	107	90	89	83	79	105	
	79.7	92	97	96	104	86	85	78	75	102	
	59.9	89	97	95	103	82	82	75	71	101	
	50.4	86	97	93	102	80	79	75	71	99	
2600	99.8	99	99	103	106	98	98	93	89	106	
	80	99	98	102	104	95	95	89	84	104	
	60.2	94	92	99	102	90	91	85	82	101	
	50.3	92	89	98	101	88	89	84	81	99	
3065	99.8	102	103	106	109	103	102	98	93	110	
	80	102	103	105	107	101	99	94	89	108	
	60.2	97	97	101	105	97	95	90	86	104	
	50.3	95	94	100	104	95	92	88	85	103	

RPM	% WOV	Outlet Sound Power, L _{Wo} [dB ref 10 ⁻¹² watts]									
		1	2	3	4	5	6	7	8	L _{WoA}	
1000	99.6	91	84	81	70	67	64	56	51	76	
	80.5	91	83	79	68	64	59	53	50	74	
	60.6	90	81	76	66	61	59	57	53	72	
	53.9	91	81	75	65	61	59	57	54	72	
1400	99.8	94	87	86	79	78	75	69	60	84	
	80.3	95	88	85	76	75	71	63	57	82	
	60.5	93	87	84	73	73	69	65	62	80	
	55.6	92	87	83	73	73	69	66	64	80	
1770	94.4	94	89	92	91	85	82	75	68	92	
	80.0	92	88	89	87	81	79	71	65	88	
	59.6	91	86	87	83	78	76	72	70	85	
	55.2	91	85	86	82	77	75	72	71	84	
1900	94.4	94	91	89	95	87	85	78	72	94	
	79.9	93	90	88	91	83	81	73	67	90	
	60.0	90	86	86	85	80	78	73	72	86	
	54.0	89	86	85	85	79	77	75	73	86	
2600	94.4	103	97	95	99	96	95	87	82	101	
	79.8	102	97	93	96	92	91	83	77	98	
	59.9	100	94	90	92	88	87	82	80	94	
	54.1	98	91	90	91	87	86	83	81	93	
3065	94.4	106	102	99	102	101	99	92	87	105	
	79.8	105	102	98	99	97	95	88	82	102	
	59.9	103	100	95	95	93	91	87	84	98	
	54.1	100	97	94	94	92	90	87	85	97	

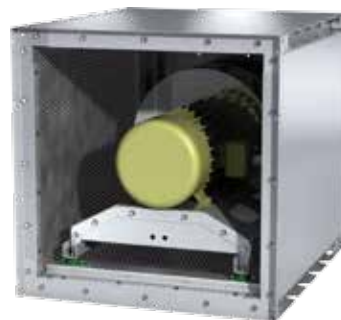
Performance certified is for installation type A: Free inlet, Free outlet. Power rating (Bhp) does not include transmission losses. Performance ratings do not include the effects of appurtenances (accessories).

Values shown are for inlet L_{Wi}, L_{WfA} and outlet L_{Wo}, L_{WoA} sound power levels for installation Type A: Free inlet, Free outlet. The A-weighted sound ratings shown have been calculated per AMCA International Standard 301. The AMCA International Certified Ratings Seal for Sound for model HPA applies to the single L_{WfA} and L_{WoA} values.

Plenum Size 24 - Compact

Maxium RPM	2744
HPA Motor on Frame Limit	284T
Wheel Diameter	24.50 [in.] 622 [mm]
Peak Power	(rpm / 786) ³ [hp] (rpm / 866) ³ [kW]
Outlet Velocity	cfm / 9.38 [ft/min] m ³ /hr / 3137 [m/s]
Tip Speed	rpm x 6.41 [ft/min] rpm x 0.0326 [m/s]
% Wide Open Volume (%WOV)	cfm / (rpm x 0.0850) [%] m ³ /hr / (rpm x 0.1444) [%]

Imperial data — [Metric data](#)



CFM	OV	STATIC PRESSURE (in. wg)															
		1.0		2.0		3.0		4.0		5.0		6.0		7.0		8.0	
		RPM	BHP	RPM	BHP	RPM	BHP	RPM	BHP	RPM	BHP	RPM	BHP	RPM	BHP	RPM	BHP
8000	853	1113	2.48	1268	4.09	1410	5.78	1540	7.53								
9000	960	1214	3.07	1356	4.83	1488	6.69	1611	8.61	1726	10.59						
10000	1066	1319	3.78	1446	5.69	1570	7.73	1687	9.80	1797	11.95	1901	14.14				
11000	1173	1427	4.62	1543	6.67	1658	8.85	1768	11.11	1872	13.42	1971	15.79	2067	18.19	2157	20.66
12000	1279	1536	5.59	1643	7.78	1749	10.11	1852	12.55	1952	15.02	2047	17.55	2138	20.13	2227	22.74
13000	1386	1647	6.72	1745	9.05	1844	11.53	1942	14.11	2034	16.78	2127	19.46	2214	22.20	2298	25.00
14000	1493	1759	8.00	1850	10.48	1943	13.10	2033	15.83	2123	18.64	2208	21.54	2294	24.42	2375	27.38
15000	1599	1871	9.46	1957	12.09	2043	14.85	2128	17.73	2213	20.69	2296	23.73	2375	26.83	2455	29.93
16000	1706	1983	11.11	2066	13.89	2145	16.79	2227	19.81	2304	22.92	2385	26.11	2462	29.37		
17000	1813	2095	12.96	2176	15.88	2250	18.92	2327	22.09	2402	25.35	2476	28.69				
18000	1919	2208	15.02	2287	18.09	2357	21.28	2429	24.58	2501	27.98						
19000	2026	2321	17.30	2398	20.52	2466	23.86	2531	27.30								

RPM	% WOVS	Inlet Sound Power, L _{W_i} [dB ref 10 ⁻¹² watts]										L _{W_iA}
		1	2	3	4	5	6	7	8			
750	99.3	71	79	76	67	68	66	56	50	73		
	80.0	69	80	73	65	64	58	55	49	70		
	59.2	67	76	71	64	61	56	55	49	68		
	54.3	76	76	73	65	62	58	56	49	69		
1000	99.6	76	76	96	75	73	72	65	57	88		
	80.2	73	75	93	71	70	66	58	54	84		
	59.6	72	74	90	69	69	63	60	56	82		
	55.5	71	74	87	69	69	63	60	56	79		
1400	99.6	83	82	102	81	81	79	76	66	94		
	80.4	81	79	103	78	77	75	68	64	95		
	59.5	80	75	98	76	75	72	68	66	90		
	55.3	78	77	98	76	76	72	69	66	90		
1770	99.6	88	86	93	91	88	85	84	77	94		
	79.5	85	83	91	89	84	81	75	70	90		
	60.0	86	81	92	86	81	78	74	71	88		
	54.7	85	78	94	85	81	78	74	72	89		
2000	99.5	93	87	95	100	92	89	87	84	99		
	80.1	90	85	93	95	88	85	79	75	95		
	59.9	89	83	94	91	86	83	77	75	93		
	54.2	89	82	95	92	85	82	78	75	93		
2744	99.5	98	99	99	105	102	97	95	92	106		
	80.1	96	96	97	101	98	93	88	84	102		
	59.9	94	94	97	100	95	91	87	83	101		
	54.2	95	94	97	101	95	90	87	83	101		

RPM	% WOVS	Outlet Sound Power, L _{W_o} [dB ref 10 ⁻¹² watts]										L _{W_oA}
		1	2	3	4	5	6	7	8			
750	94.3	74	83	67	64	61	60	51	46	70		
	80.0	73	81	66	62	57	54	51	46	68		
	59.6	69	78	62	61	55	54	52	47	66		
	53.5	76	74	67	64	57	54	52	48	66		
1000	99.8	82	78	79	71	69	67	61	53	75		
	80.4	81	77	78	69	67	62	57	51	73		
	60.3	77	78	75	65	65	60	57	53	71		
	53.9	83	83	75	68	66	60	57	54	73		
1400	99.8	89	85	87	80	76	74	71	63	83		
	79.9	88	83	85	77	74	70	66	60	81		
	59.8	85	81	82	74	71	67	67	64	78		
	56.1	84	81	82	73	71	67	67	65	78		
1770	99.8	95	90	87	88	83	80	78	74	89		
	79.8	91	87	86	85	80	76	72	68	86		
	58.8	89	87	84	82	77	74	73	72	84		
	54.5	89	86	84	81	76	73	73	73	83		
2000	99.8	97	94	89	93	87	84	81	80	94		
	79.8	94	91	86	91	84	80	76	75	91		
	59.6	91	89	85	87	81	78	76	77	88		
	53.9	92	88	87	86	80	78	77	78	87		
2744	99.8	103	104	98	99	97	92	89	88	101		
	79.8	99	100	96	96	94	89	85	82	98		
	59.6	97	98	94	93	90	87	84	84	96		
	53.9	97	98	95	93	89	86	84	84	95		

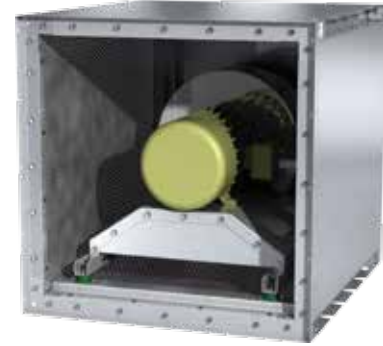
Performance certified is for installation type A: Free inlet, Free outlet. Power rating (Bhp) does not include transmission losses. Performance ratings do not include the effects of appurtenances (accessories).

Values shown are for inlet L_{W_i}, L_{W_iA} and outlet L_{W_o}, L_{W_oA} sound power levels for installation Type A: Free inlet, Free outlet. The A-weighted sound ratings shown have been calculated per AMCA International Standard 301. The AMCA International Certified Ratings Seal for Sound for model HPA applies to the single L_{W_iA} and L_{W_oA} values.

Plenum Size 24 - Standard

Maximum RPM	2744
HPA Motor on Frame Limit	284T
Wheel Diameter	24.50 [in.] 622 [mm]
Peak Power	(rpm / 788) ³ [hp] (rpm / 868) ³ [kW]
Outlet Velocity	cfm / 11.39 [ft/min] m ³ /hr / 3810 [m/s]
Tip Speed	rpm x 6.41 [ft/min] rpm x 0.0326 [m/s]
% Wide Open Volume (%WOV)	cfm / (rpm x 0.0866) [%] m ³ /hr / (rpm x 0.1471) [%]

Imperial data — Metric data



CFM	OV	STATIC PRESSURE (in. wg)															
		1.0		2.0		3.0		4.0		5.0		6.0		7.0		8.0	
		RPM	BHP	RPM	BHP	RPM	BHP	RPM	BHP	RPM	BHP	RPM	BHP	RPM	BHP	RPM	BHP
8000	702	1105	2.32	1257	3.89	1398	5.56	1528	7.29								
9000	790	1205	2.86	1344	4.58	1475	6.40	1597	8.30	1712	10.26						
10000	878	1306	3.51	1437	5.36	1556	7.35	1672	9.40	1781	11.51	1885	13.69				
11000	966	1409	4.26	1533	6.26	1644	8.39	1752	10.60	1855	12.88	1955	15.21	2050	17.59	2140	20.04
12000	1053	1514	5.13	1631	7.27	1737	9.54	1835	11.93	1934	14.35	2028	16.85	2119	19.39	2208	21.97
13000	1141	1620	6.12	1731	8.43	1831	10.83	1926	13.35	2016	15.96	2107	18.59	2193	21.30	2278	24.05
14000	1229	1727	7.27	1832	9.73	1929	12.27	2019	14.93	2104	17.68	2188	20.50	2273	23.34	2353	26.26
15000	1317	1835	8.56	1935	11.17	2028	13.86	2114	16.66	2196	19.55	2274	22.54	2354	25.55	2432	28.60
16000	1405	1945	10.02	2039	12.77	2128	15.63	2211	18.56	2290	21.59	2366	24.71	2438	27.91		
17000	1492	2055	11.66	2144	14.55	2229	17.57	2309	20.64	2385	23.81	2459	27.06				
18000	1580	2166	13.49	2250	16.52	2332	19.69	2409	22.91	2483	26.22	2553	29.61				
19000	1668	2277	15.51	2357	18.68	2435	21.99	2510	25.38	2581	28.83						

RPM	% WOV	Inlet Sound Power, L _{Wi} [dB ref 10 ⁻¹² watts]								
		1	2	3	4	5	6	7	8	L _{WiA}
750	99.7	72	78	75	66	67	67	58	51	73
	80.5	70	80	72	64	64	61	56	50	70
	59.1	68	76	70	62	62	61	56	50	69
	51.7	78	76	72	63	60	58	55	48	68
1000	99.6	77	76	93	73	72	72	66	60	85
	80.4	72	74	90	70	69	67	62	56	82
	60	70	74	89	68	68	66	62	57	81
	53.3	83	82	81	70	68	66	60	55	76
1400	99.5	92	80	97	80	80	78	77	69	90
	80	86	77	97	77	76	74	70	65	89
	60.4	80	75	94	74	74	72	69	65	86
	55.9	92	89	93	80	77	75	69	65	86
1770	99.6	88	85	93	90	86	84	82	76	92
	80	82	81	91	87	83	80	75	71	89
	59.6	82	78	89	82	79	76	73	71	86
	55.2	82	79	90	83	78	76	73	71	86
2000	99.5	90	87	92	97	91	89	86	84	97
	79.8	86	82	91	94	87	85	79	75	94
	60	89	86	94	92	86	82	78	76	93
	53.5	86	81	93	93	83	80	77	75	92
2744	99.5	95	97	97	102	100	97	94	92	105
	79.8	91	92	95	100	97	93	89	84	102
	60	95	96	98	100	96	91	87	84	101
	53.5	91	92	95	100	94	88	86	83	100

RPM	% WOV	Outlet Sound Power, L _{Wo} [dB ref 10 ⁻¹² watts]								
		1	2	3	4	5	6	7	8	L _{Wo} A
750	100	72	83	67	64	62	62	53	48	71
	80.1	71	83	66	62	59	56	51	47	69
	58.9	69	80	63	61	57	54	51	47	66
	52.4	76	73	66	61	58	54	51	48	65
1000	99.8	78	77	80	71	70	67	62	55	76
	79.9	77	76	79	68	68	63	57	52	74
	59.9	74	77	76	65	66	61	57	55	72
	52.9	74	78	76	64	66	61	58	56	71
1400	99.9	89	84	88	79	78	75	73	65	84
	79.6	86	82	85	77	76	71	66	61	81
	60.2	84	80	83	73	74	68	67	65	79
	51.8	83	80	82	73	74	68	68	66	79
1770	99.8	93	89	87	87	85	82	78	74	90
	79.1	91	88	85	85	82	78	73	68	87
	60	89	86	83	81	78	75	73	72	84
	52.2	89	87	84	80	78	75	74	74	84
2000	99.8	97	93	87	93	89	85	81	80	94
	79.6	93	89	84	91	86	82	77	73	91
	59.6	92	89	84	86	83	80	76	76	88
	52.9	92	89	85	85	81	80	77	76	88
2744	99.8	102	103	97	98	98	94	90	87	102
	79.6	98	99	94	96	95	91	86	82	99
	59.6	97	98	94	92	91	88	85	83	96
	52.9	97	98	94	92	90	87	85	83	95

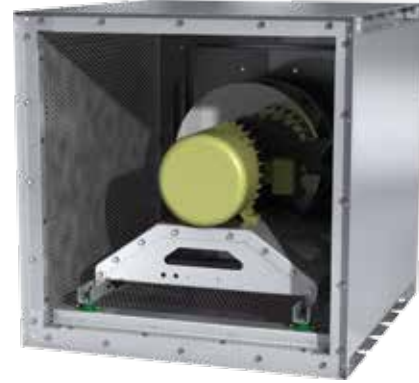
Performance certified is for installation type A: Free inlet, Free outlet. Power rating (Bhp) does not include transmission losses. Performance ratings do not include the effects of appurtenances (accessories).

Values shown are for inlet L_{Wi}, L_{WiA} and outlet L_{Wo}, L_{WoA} sound power levels for installation Type A: Free inlet, Free outlet. The A-weighted sound ratings shown have been calculated per AMCA International Standard 301. The AMCA International Certified Ratings Seal for Sound for model HPA applies to the single L_{WiA} and L_{WoA} values.

Plenum Size 24 - Large

Maxium RPM	2744
HPA Motor on Frame Limit	284T
Wheel Diameter	24.50 [in.] 622 [mm]
Peak Power	(rpm / 790) ³ [hp] (rpm / 871) ³ [kW]
Outlet Velocity	cfm / 13.83 [ft/min] m ³ /hr / 4626 [m/s]
Tip Speed	rpm x 6.41 [ft/min] rpm x 0.0326 [m/s]
% Wide Open Volume (%WOV)	cfm / (rpm x 0.0870) [%] m ³ /hr / (rpm x 0.1478) [%]

Imperial data — [Metric data](#)



CFM	OV	STATIC PRESSURE (in. wg)															
		1.0		2.0		3.0		4.0		5.0		6.0		7.0		8.0	
		RPM	BHP	RPM	BHP	RPM	BHP	RPM	BHP	RPM	BHP	RPM	BHP	RPM	BHP	RPM	BHP
8000	578	1098	2.26	1251	3.81	1392	5.47	1525	7.20								
9000	651	1196	2.79	1338	4.48	1468	6.29	1592	8.18	1708	10.12						
10000	723	1296	3.41	1429	5.23	1549	7.20	1664	9.25	1775	11.35	1881	13.50				
11000	795	1399	4.14	1522	6.10	1636	8.20	1744	10.40	1846	12.68	1948	14.98	2045	17.35	2136	19.78
12000	868	1502	4.98	1620	7.08	1727	9.32	1827	11.67	1926	14.09	2018	16.59	2112	19.10	2202	21.66
13000	940	1607	5.95	1718	8.20	1819	10.57	1916	13.05	2007	15.63	2098	18.26	2183	20.98	2269	23.69
14000	1012	1713	7.06	1819	9.45	1915	11.96	2007	14.58	2095	17.30	2179	20.09	2263	22.93	2342	25.85
15000	1084	1820	8.32	1921	10.85	2013	13.50	2100	16.26	2185	19.10	2265	22.05	2344	25.04	2422	28.09
16000	1157	1929	9.74	2024	12.41	2113	15.20	2196	18.09	2276	21.08	2354	24.15	2428	27.32		
17000	1229	2039	11.33	2128	14.14	2213	17.07	2293	20.10	2369	23.23	2445	26.43	2517	29.72		
18000	1301	2150	13.09	2233	16.05	2314	19.12	2392	22.29	2466	25.55	2537	28.90				
19000	1374	2261	15.05	2338	18.16	2417	21.37	2492	24.67	2563	28.07						

RPM	% WOVS	Inlet Sound Power, L _{W_i} [dB ref 10 ⁻¹² watts]										L _{W_iA}
		1	2	3	4	5	6	7	8			
750	99.7	70	82	77	71	74	73	61	56	78		
	79.7	68	81	75	69	69	69	58	53	75		
	59.8	65	75	72	67	65	63	56	52	71		
	55.4	65	72	70	66	64	62	56	52	70		
1000	99.6	74	77	97	76	79	77	75	66	90		
	80.3	72	76	92	74	76	75	67	62	85		
	59.9	69	76	86	71	72	69	62	59	79		
	55.1	69	77	84	70	71	68	62	59	78		
1400	99.5	86	81	101	83	84	84	83	77	94		
	80.4	81	78	98	80	82	81	79	72	91		
	60.2	80	75	92	77	79	77	72	68	86		
	54.3	81	75	92	77	78	76	71	68	86		
1770	99.6	88	85	96	96	89	89	88	86	97		
	79.9	85	82	93	91	86	85	84	79	93		
	60.1	83	78	91	87	84	83	79	75	90		
	52.9	83	79	94	87	84	83	79	75	91		
2000	99.6	89	88	93	99	93	91	89	91	100		
	79.7	87	83	91	96	89	88	86	83	96		
	59.6	85	81	92	91	87	86	82	78	93		
	53.6	85	81	93	89	88	86	82	78	93		
2744	99.6	95	97	98	104	102	99	97	97	107		
	79.7	92	93	95	101	99	95	93	91	103		
	59.6	90	92	95	99	96	93	91	87	101		
	53.6	90	92	95	98	95	93	90	86	101		

RPM	% WOVS	Outlet Sound Power, L _{W_o} [dB ref 10 ⁻¹² watts]										L _{W_oA}
		1	2	3	4	5	6	7	8			
750	100.0	72	81	69	68	68	66	56	54	73		
	79.8	68	79	67	65	62	60	53	53	69		
	60.2	66	78	65	62	58	56	53	53	67		
	53.6	76	76	67	64	59	55	53	53	67		
1000	99.8	79	79	82	73	75	72	69	57	80		
	79.4	79	78	80	70	71	68	61	55	76		
	60.4	75	78	78	66	68	63	59	56	73		
	55.2	74	79	77	65	67	62	58	57	73		
1400	99.8	87	83	91	80	81	79	77	68	87		
	79.9	85	81	85	77	78	75	71	63	83		
	60.3	83	80	82	74	74	70	68	65	79		
	54.0	82	80	82	73	74	70	68	66	79		
1770	99.8	93	88	89	91	88	85	82	79	93		
	79.8	93	85	85	85	84	80	77	71	88		
	59.7	90	84	83	82	80	77	74	72	85		
	52.7	89	85	83	81	79	76	74	73	85		
2000	99.9	95	90	87	95	91	87	83	82	96		
	80.0	95	89	85	90	88	84	79	76	92		
	60.2	91	87	84	86	84	80	77	76	89		
	54.5	91	87	85	85	83	80	77	76	88		
2744	99.9	101	100	95	99	100	96	92	90	103		
	80	100	99	94	95	96	92	88	84	100		
	60.2	97	97	93	92	92	89	85	83	96		
	54.5	97	97	93	92	91	88	85	83	96		

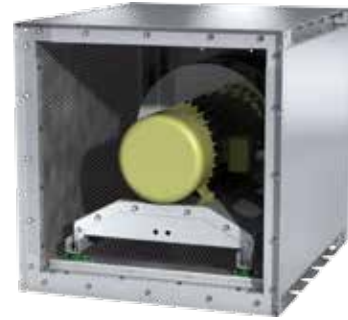
Performance certified is for installation type A: Free inlet, Free outlet. Power rating (Bhp) does not include transmission losses. Performance ratings do not include the effects of appurtenances (accessories).

Values shown are for inlet L_{W_i}, L_{W_iA} and outlet L_{W_o}, L_{W_oA} sound power levels for installation Type A: Free inlet, Free outlet. The A-weighted sound ratings shown have been calculated per AMCA International Standard 301. The AMCA International Certified Ratings Seal for Sound for model HPA applies to the single L_{W_iA} and L_{W_oA} values.

Plenum Size 27 - Compact

Maximum RPM	2382
HPA Motor on Frame Limit	286T
Wheel Diameter	27.00 [in.] 686 [mm]
Peak Power	(rpm / 668) ³ [hp] (rpm / 737) ³ [kW]
Outlet Velocity	cfm / 11.39 [ft/min] m ³ /hr / 3810 [m/s]
Tip Speed	rpm x 7.07 [ft/min] rpm x 0.0359 [m/s]
% Wide Open Volume (%WOV)	cfm / (rpm x 0.1137) [%] m ³ /hr / (rpm x 0.1932) [%]

Imperial data — Metric data



CFM	OV	STATIC PRESSURE (in. wg)															
		1.0		2.0		3.0		4.0		5.0		6.0		7.0		8.0	
		RPM	BHP	RPM	BHP	RPM	BHP	RPM	BHP	RPM	BHP	RPM	BHP	RPM	BHP	RPM	BHP
10000	878	1032	3.16	1168	5.17	1295	7.27	1413	9.44								
11000	966	1107	3.78	1235	5.92	1355	8.19	1466	10.54	1570	12.96						
12000	1053	1185	4.48	1303	6.78	1415	9.22	1522	11.73	1623	14.31	1717	16.95				
13000	1141	1266	5.29	1374	7.73	1481	10.33	1582	13.01	1678	15.76	1770	18.56	1857	21.43	1940	24.37
14000	1229	1347	6.21	1448	8.79	1548	11.53	1643	14.41	1737	17.30	1823	20.30	1909	23.31	1990	26.40
15000	1317	1429	7.25	1523	9.97	1616	12.87	1709	15.88	1797	18.97	1883	22.11	1963	25.33	2043	28.56
16000	1405	1512	8.42	1600	11.28	1689	14.32	1776	17.48	1860	20.76	1943	24.05	2021	27.42		
17000	1492	1596	9.72	1678	12.73	1763	15.91	1844	19.22	1926	22.64	2004	26.15	2081	29.65		
18000	1580	1679	11.16	1759	14.32	1838	17.64	1915	21.10	1993	24.66	2069	28.33				
19000	1668	1763	12.76	1840	16.06	1914	19.52	1989	23.13	2061	26.85						
20000	1756	1847	14.51	1921	17.97	1990	21.57	2063	25.32	2132	29.19						
21000	1844	1931	16.44	2004	20.05	2070	23.79	2138	27.68								

RPM	% WOV	Inlet Sound Power, L _{Wi} [dB ref 10 ⁻¹² watts]								
		1	2	3	4	5	6	7	8	L _{WiA}
750	99.3	74	82	79	70	71	69	59	53	77
	80.0	72	84	76	68	67	61	58	52	73
	59.2	71	80	74	67	64	59	58	52	71
	54.3	80	80	76	68	65	61	59	52	73
1000	99.6	80	80	99	78	76	75	68	60	91
	80.2	77	78	96	74	73	69	61	57	88
	59.6	76	78	93	72	72	66	63	59	85
	55.5	74	78	90	72	72	66	63	59	82
1400	99.6	87	85	105	84	84	82	79	69	97
	80.4	85	82	106	81	80	78	71	67	98
	59.5	83	79	101	79	78	75	71	69	93
	55.3	82	80	101	79	79	75	72	69	93
1770	99.6	92	89	96	94	91	88	87	80	97
	79.5	89	86	95	92	87	84	78	73	93
	60.0	89	84	95	89	84	81	77	74	91
	54.7	89	81	97	88	84	81	77	75	92
2000	99.5	96	91	98	103	95	92	90	87	102
	80.1	94	88	96	98	91	88	82	78	98
	59.9	92	86	97	94	89	86	80	78	96
	54.2	93	86	98	95	88	85	81	78	96
2382	99.5	99	97	100	106	100	96	94	91	106
	80.1	97	94	98	101	96	92	87	83	102
	59.9	95	92	99	99	94	90	85	83	100
	54.2	96	92	99	100	94	90	86	83	100

RPM	% WOV	Outlet Sound Power, L _{Wo} [dB ref 10 ⁻¹² watts]								
		1	2	3	4	5	6	7	8	L _{WoA}
750	94.3	77	86	70	67	64	63	54	49	73
	80.0	77	84	69	65	60	57	54	49	71
	59.6	73	82	65	64	58	57	55	50	69
	53.5	80	77	70	67	60	57	55	51	69
1000	99.8	85	82	82	74	72	70	64	56	78
	80.4	85	81	81	72	70	65	60	54	76
	60.3	80	81	78	68	68	63	60	56	74
	53.9	86	86	78	71	69	63	60	57	76
1400	99.8	93	88	90	83	79	77	74	66	86
	79.9	91	86	88	80	77	73	69	63	84
	59.8	89	84	85	77	74	70	70	67	81
	56.1	88	84	85	76	74	70	70	68	81
1770	99.8	99	93	90	91	86	83	81	77	92
	79.8	94	91	89	88	83	79	75	71	89
	58.8	93	90	87	85	80	77	76	75	87
	54.5	93	89	87	84	79	76	76	76	86
2000	99.8	100	98	92	96	90	87	84	83	97
	79.8	97	94	89	94	87	83	79	78	94
	59.6	95	92	88	90	84	81	79	80	91
	53.9	95	91	90	89	83	81	80	81	91
2382	99.8	104	103	97	99	95	91	89	87	101
	79.8	100	99	95	97	92	88	84	82	98
	59.6	98	97	93	93	89	86	84	84	95
	53.9	98	97	94	93	88	85	84	84	95

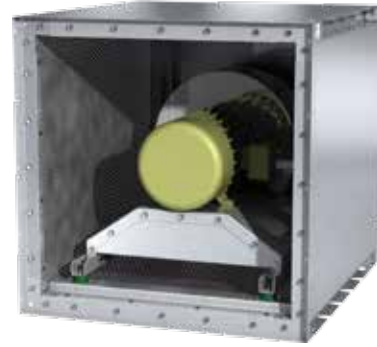
Performance certified is for installation type A: Free inlet, Free outlet. Power rating (Bhp) does not include transmission losses. Performance ratings do not include the effects of appurtenances (accessories).

Values shown are for inlet L_{Wi}, L_{WiA} and outlet L_{Wo}, L_{WoA} sound power levels for installation Type A: Free inlet, Free outlet. The A-weighted sound ratings shown have been calculated per AMCA International Standard 301. The AMCA International Certified Ratings Seal for Sound for model HPA applies to the single L_{WiA} and L_{WoA} values.

Plenum Size 27 - Standard

Maxium RPM	2382
HPA Motor on Frame Limit	286T
Wheel Diameter	27.00 [in.] 686 [mm]
Peak Power	(rpm / 670) ³ [hp] (rpm / 739) ³ [kW]
Outlet Velocity	cfm / 13.83 [ft/min] m ³ /hr / 4626 [m/s]
Tip Speed	rpm x 7.07 [ft/min] rpm x 0.0359 [m/s]
% Wide Open Volume (%WOV)	cfm / (rpm x 0.1159) [%] m ³ /hr / (rpm x 0.1969) [%]

Imperial data — [Metric data](#)



CFM	OV	STATIC PRESSURE (in. wg)															
		1.0		2.0		3.0		4.0		5.0		6.0		7.0		8.0	
		RPM	BHP	RPM	BHP	RPM	BHP	RPM	BHP	RPM	BHP	RPM	BHP	RPM	BHP	RPM	BHP
10000	723	1024	2.96	1158	4.91	1283	6.98	1401	9.13								
11000	795	1098	3.52	1224	5.61	1342	7.83	1453	10.15	1557	12.54						
12000	868	1174	4.16	1294	6.39	1403	8.78	1508	11.25	1609	13.79	1703	16.42				
13000	940	1251	4.89	1365	7.26	1467	9.80	1568	12.42	1662	15.15	1755	17.91	1842	20.75	1924	23.69
14000	1012	1329	5.71	1438	8.23	1536	10.91	1628	13.71	1721	16.56	1807	19.51	1893	22.49	1974	25.55
15000	1084	1408	6.63	1512	9.31	1606	12.12	1694	15.07	1781	18.09	1865	21.18	1946	24.35	2026	27.55
16000	1157	1487	7.67	1587	10.50	1677	13.45	1762	16.54	1842	19.75	1925	22.97	2003	26.29	2078	29.68
17000	1229	1567	8.82	1662	11.81	1750	14.90	1832	18.12	1909	21.47	1985	24.89	2062	28.34		
18000	1301	1648	10.10	1739	13.24	1824	16.48	1902	19.84	1978	23.32	2049	26.92				
19000	1374	1729	11.52	1817	14.80	1898	18.19	1975	21.70	2048	25.31	2117	29.04				
20000	1446	1812	13.08	1895	16.50	1974	20.05	2048	23.69	2118	27.45						
21000	1518	1894	14.79	1974	18.34	2050	22.07	2122	25.84	2190	29.74						

RPM	% WOV	Inlet Sound Power, L _{Wi} [dB ref 10 ⁻¹² watts]								L _{WiA}
		1	2	3	4	5	6	7	8	
750	99.7	75	82	78	69	70	70	61	54	76
	80.5	73	84	75	67	67	64	59	53	74
	59.1	71	79	73	65	65	64	59	53	72
	51.7	82	80	75	66	63	61	58	51	72
1000	99.6	81	79	96	76	75	75	69	63	88
	80.4	76	78	93	73	72	70	65	59	85
	60	74	77	93	71	71	69	65	60	85
	53.3	87	86	84	73	71	69	63	58	79
1400	99.5	95	84	100	83	83	81	80	72	93
	80	90	80	100	80	79	77	73	68	92
	60.4	84	79	97	77	77	75	72	68	90
	55.9	95	92	96	83	80	78	72	68	89
1770	99.6	91	88	96	93	89	87	85	79	95
	80	86	84	94	90	86	83	78	74	92
	59.6	86	81	92	85	82	79	76	74	89
	55.2	85	83	93	86	81	79	76	74	89
2000	99.5	93	90	95	100	94	92	89	87	100
	79.8	89	86	94	97	90	88	82	78	97
	60	93	89	97	95	89	85	81	79	96
	53.5	89	85	96	96	86	83	80	78	95
2382	99.5	96	96	98	103	99	96	94	91	104
	79.8	92	91	96	101	96	92	87	83	101
	60	96	95	99	100	94	90	86	83	100
	53.5	92	91	97	100	92	88	85	83	99

RPM	% WOV	Outlet Sound Power, L _{Wo} [dB ref 10 ⁻¹² watts]								L _{WoA}
		1	2	3	4	5	6	7	8	
750	100	76	86	70	67	65	64	56	51	74
	80.1	74	86	69	65	62	59	54	50	72
	58.9	73	83	66	64	59	57	54	50	70
	52.4	79	76	69	64	61	57	54	51	68
1000	99.8	82	80	83	73	73	70	65	57	79
	79.9	80	79	81	71	71	66	60	55	77
	59.9	77	80	79	68	69	64	60	58	75
	52.9	77	81	78	67	69	64	60	59	74
1400	99.9	92	88	91	82	81	78	76	68	87
	79.6	90	85	88	80	79	74	69	64	84
	60.2	87	83	85	76	77	71	70	68	82
	51.8	86	83	85	76	77	71	71	69	82
1770	99.8	97	92	90	90	88	84	81	77	93
	79.1	94	91	88	88	85	81	76	71	90
	60	92	89	85	84	81	78	76	75	87
	52.2	92	90	87	83	81	78	77	77	87
2000	99.8	100	96	90	96	92	88	84	83	97
	79.6	96	92	87	94	89	85	80	76	94
	59.6	95	92	87	89	86	83	79	79	91
	52.9	95	92	88	88	84	82	79	79	91
2382	99.8	103	101	96	99	97	93	89	87	101
	79.6	99	98	93	97	94	90	85	81	99
	59.6	98	97	92	92	90	87	84	83	95
	52.9	98	97	93	92	89	87	84	83	95

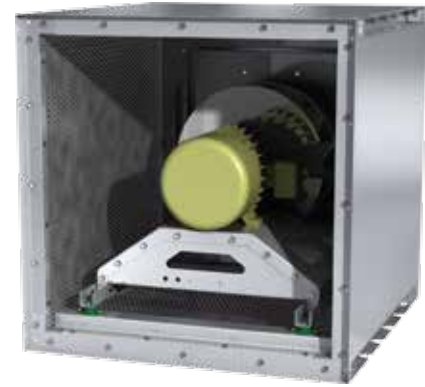
Performance certified is for installation type A: Free inlet, Free outlet. Power rating (Bhp) does not include transmission losses. Performance ratings do not include the effects of appurtenances (accessories).

Values shown are for inlet L_{Wi}, L_{WiA} and outlet L_{Wo}, L_{WoA} sound power levels for installation Type A: Free inlet, Free outlet. The A-weighted sound ratings shown have been calculated per AMCA International Standard 301. The AMCA International Certified Ratings Seal for Sound for model HPA applies to the single L_{WiA} and L_{WoA} values.

Plenum Size 27 - Large

Maxium RPM	2382
HPA Motor on Frame Limit	286T
Wheel Diameter	27.00 [in.] 686 [mm]
Peak Power	(rpm / 672) ³ [hp] (rpm / 740) ³ [kW]
Outlet Velocity	cfm / 17.02 [ft/min] m ³ /hr / 5691 [m/s]
Tip Speed	rpm x 7.07 [ft/min] rpm x 0.0359 [m/s]
% Wide Open Volume (%WOV)	cfm / (rpm x 0.1164) [%] m ³ /hr / (rpm x 0.1978) [%]

Imperial data — Metric data



CFM	OV	STATIC PRESSURE (in. wg)															
		1.0		2.0		3.0		4.0		5.0		6.0		7.0		8.0	
		RPM	BHP	RPM	BHP	RPM	BHP	RPM	BHP	RPM	BHP	RPM	BHP	RPM	BHP	RPM	BHP
10000	588	1017	2.89	1153	4.81	1278	6.88	1398	9.01								
11000	646	1090	3.42	1219	5.49	1336	7.70	1448	10.00	1554	12.37						
12000	705	1165	4.04	1286	6.24	1397	8.60	1501	11.07	1604	13.59	1699	16.19				
13000	764	1242	4.75	1355	7.08	1461	9.59	1561	12.20	1654	14.92	1749	17.65	1837	20.47	1920	23.38
14000	823	1319	5.55	1428	8.02	1528	10.66	1622	13.43	1713	16.28	1800	19.22	1887	22.17	1969	25.20
15000	882	1397	6.45	1501	9.06	1596	11.83	1686	14.75	1773	17.75	1856	20.84	1938	23.99	2019	27.15
16000	940	1475	7.45	1575	10.21	1666	13.12	1753	16.16	1835	19.33	1916	22.55	1993	25.88	2070	29.23
17000	999	1554	8.58	1650	11.47	1738	14.52	1821	17.70	1900	21.00	1977	24.39	2053	27.84		
18000	1058	1634	9.82	1726	12.86	1811	16.04	1890	19.36	1968	22.80	2041	26.35	2114	29.94		
19000	1117	1715	11.19	1803	14.38	1885	17.70	1961	21.16	2036	24.72	2107	28.40				
20000	1175	1797	12.70	1880	16.03	1959	19.49	2034	23.08	2105	26.79						
21000	1234	1880	14.36	1958	17.83	2035	21.43	2107	25.16	2175	29.01						

RPM	% WOV	Inlet Sound Power, L _{Wi} [dB ref 10 ⁻¹² watts]									
		1	2	3	4	5	6	7	8	L _{WA}	
750	99.7	73	85	80	74	77	76	64	59	81	
	79.7	72	84	78	72	72	72	61	56	78	
	59.8	69	78	75	70	68	66	59	55	74	
	55.4	69	75	74	69	67	65	59	55	73	
1000	99.6	78	80	101	79	82	80	78	69	93	
	80.3	75	79	95	77	79	78	70	65	88	
	59.9	72	79	89	74	74	72	65	62	83	
	55.1	72	80	87	73	74	71	65	62	81	
1400	99.5	89	84	104	86	87	87	86	80	97	
	80.4	85	81	101	83	85	84	82	75	94	
	60.2	84	78	95	80	82	80	75	71	89	
	54.3	84	78	95	80	81	79	74	71	89	
1770	99.6	91	88	99	99	92	91	90	89	100	
	79.9	89	85	96	94	89	88	87	82	96	
	60.1	87	81	94	90	87	86	82	78	93	
	52.9	87	83	97	90	87	86	82	78	94	
2000	99.6	93	91	96	101	95	94	92	94	103	
	79.7	91	86	94	98	92	91	89	86	99	
	59.6	89	84	95	94	90	89	85	81	96	
	53.6	89	85	96	92	90	89	84	81	96	
2382	99.6	96	96	99	105	101	98	97	97	107	
	79.7	94	92	96	102	98	95	93	91	103	
	59.6	92	90	96	98	95	93	90	86	100	
	53.6	92	90	97	97	95	93	89	86	100	

RPM	% WOV	Outlet Sound Power, L _{Wo} [dB ref 10 ⁻¹² watts]								
		1	2	3	4	5	6	7	8	L _{Wo} A
750	100	76	84	72	71	71	69	59	57	76
	79.8	71	82	70	68	65	63	56	56	72
	60.2	70	81	68	65	61	59	56	56	70
	53.6	79	79	70	67	62	58	56	56	70
1000	99.8	83	82	85	76	78	75	72	60	83
	79.4	82	81	83	73	74	71	64	58	79
	60.4	79	81	81	69	71	66	62	59	76
	55.2	78	82	80	68	70	65	61	60	76
1400	99.8	90	86	94	83	84	82	80	71	90
	79.9	88	84	88	80	81	78	74	66	86
	60.3	86	83	85	77	77	73	71	68	82
	54	86	83	85	76	77	73	71	69	82
1770	99.8	97	91	92	94	91	88	85	82	96
	79.8	96	88	88	88	87	83	80	74	91
	59.7	93	87	86	85	83	80	77	75	88
	52.7	92	88	86	84	82	79	77	76	88
2000	99.9	99	93	90	98	94	90	86	85	99
	80	98	92	88	93	91	87	82	79	95
	60.2	95	90	87	89	87	83	80	79	92
	54.5	94	90	88	88	86	83	80	79	91
2382	99.9	102	99	94	101	99	95	91	89	103
	80	101	98	93	96	95	91	87	83	99
	60.2	98	96	92	92	92	88	85	83	96
	54.5	97	95	92	92	91	88	85	83	95

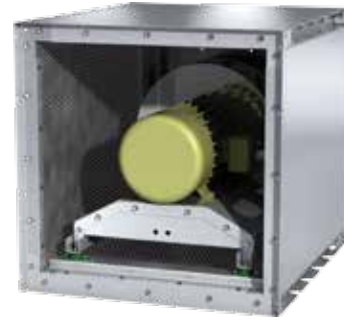
Performance certified is for installation type A: Free inlet, Free outlet. Power rating (Bhp) does not include transmission losses. Performance ratings do not include the effects of appurtenances (accessories).

Values shown are for inlet L_{Wi}, L_{WiA} and outlet L_{Wo}, L_{WoA} sound power levels for installation Type A: Free inlet, Free outlet. The A-weighted sound ratings shown have been calculated per AMCA International Standard 301. The AMCA International Certified Ratings Seal for Sound for model HPA applies to the single L_{WiA} and L_{WoA} values.

Plenum Size 30 - Compact

Maxium RPM	2144
HPA Motor on Frame Limit	324T
Wheel Diameter	30.00 [in.] 762 [mm]
Peak Power	(rpm / 561) ³ [hp] (rpm / 618) ³ [kW]
Outlet Velocity	cfm / 13.83 [ft/min] m ³ /hr / 4626 [m/s]
Tip Speed	rpm x 7.85 [ft/min] rpm x 0.0399 [m/s]
% Wide Open Volume (%WOV)	cfm / (rpm x 0.1560) [%] m ³ /hr / (rpm x 0.2650) [%]

Imperial data — [Metric data](#)



CFM	OV	STATIC PRESSURE (in. wg)																	
		1.0		2.0		3.0		4.0		5.0		6.0		7.0		8.0		9.0	
		RPM	BHP	RPM	BHP	RPM	BHP	RPM	BHP	RPM	BHP	RPM	BHP	RPM	BHP	RPM	BHP	RPM	BHP
15000	1084	1077	5.68	1182	8.53	1282	11.59	1378	14.71	1468	17.93	1553	21.22	1633	24.60				
16000	1157	1136	6.49	1234	9.49	1330	12.69	1422	15.99	1508	19.39	1591	22.84	1669	26.37				
17000	1229	1195	7.40	1288	10.54	1379	13.88	1466	17.38	1551	20.91	1630	24.56	1707	28.23	1781	32.00		
18000	1301	1255	8.40	1343	11.68	1429	15.17	1513	18.82	1595	22.54	1672	26.33	1746	30.20	1819	34.11	1887	38.12
19000	1374	1315	9.49	1398	12.92	1479	16.57	1562	20.36	1639	24.27	1715	28.21	1787	32.26	1857	36.34	1925	40.48
20000	1446	1376	10.70	1454	14.27	1533	18.06	1611	22.00	1686	26.08	1759	30.20	1830	34.39	1897	38.68	1964	42.97
21000	1518	1437	12.01	1511	15.73	1587	19.66	1660	23.75	1734	27.97	1804	32.31	1874	36.64	1940	41.07	2003	45.60
22000	1590	1498	13.44	1570	17.31	1642	21.38	1712	25.62	1783	29.98	1851	34.48	1918	39.02	1983	43.58	2046	48.25
23000	1663	1559	15.00	1629	19.01	1697	23.22	1765	27.60	1832	32.12	1899	36.76	1963	41.52	2027	46.24		
24000	1735	1620	16.68	1688	20.84	1753	25.19	1819	29.72	1882	34.39	1948	39.17	2011	44.07	2072	49.03		
25000	1807	1681	18.49	1748	22.81	1809	27.29	1874	31.97	1935	36.79	1998	41.71	2059	46.75				
26000	1880	1742	20.44	1808	24.91	1867	29.54	1929	34.35	1989	39.31	2048	44.40	2108	49.58				

RPM	% WOV	Inlet Sound Power, L _{Wi} [dB ref 10 ⁻¹² watts]									
		1	2	3	4	5	6	7	8	L _{WiA}	
750	99.3	78	86	83	73	74	73	63	57	80	
	80.0	76	87	79	71	70	64	61	55	77	
	59.2	75	83	78	70	67	62	61	56	74	
	54.3	84	83	80	72	68	65	62	56	76	
1000	99.6	84	83	103	81	80	79	71	63	94	
	80.2	81	82	99	77	76	72	64	60	91	
	59.6	80	81	96	75	75	69	66	62	88	
	55.5	78	81	93	75	75	70	66	63	86	
1400	99.6	91	89	108	87	87	86	82	72	100	
	80.4	88	86	110	84	83	81	74	70	101	
	59.5	87	82	104	82	82	79	74	72	96	
	55.3	86	84	104	82	82	79	75	73	96	
1770	99.6	96	93	100	97	94	92	90	83	100	
	79.5	93	90	98	95	90	87	81	77	96	
	60.0	93	88	99	92	88	84	80	78	95	
	54.7	93	85	100	91	87	85	81	79	95	
2000	99.5	100	94	101	106	98	95	93	90	105	
	80.1	98	92	99	101	94	91	85	81	101	
	59.9	96	90	101	98	92	89	84	81	99	
	54.2	97	89	102	98	91	89	84	82	99	
2144	99.5	101	97	102	107	100	97	95	92	107	
	80.1	99	94	100	102	96	93	87	83	102	
	59.9	97	92	101	99	94	91	86	83	100	
	54.2	98	92	102	100	93	90	86	83	101	

RPM	% WOV	Outlet Sound Power, L _{Wo} [dB ref 10 ⁻¹² watts]									
		1	2	3	4	5	6	7	8	L _{WoA}	
750	94.3	81	89	73	71	68	67	58	52	76	
	80.0	80	88	72	68	63	61	57	52	74	
	59.6	77	85	69	67	61	61	59	53	72	
	53.5	84	81	73	70	63	60	59	54	72	
1000	99.8	89	85	85	77	75	73	67	59	82	
	80.4	88	84	85	75	73	68	63	58	80	
	60.3	84	84	82	71	71	66	63	59	78	
	53.9	90	90	81	74	72	67	63	60	79	
1400	99.8	96	91	93	86	83	80	77	69	90	
	79.9	95	89	91	83	80	76	72	66	87	
	59.8	92	87	89	80	77	73	73	70	84	
	56.1	91	88	88	80	77	73	73	71	84	
1770	99.8	102	96	94	94	89	86	84	80	95	
	79.8	98	94	92	91	86	82	78	75	92	
	58.8	97	94	91	88	84	80	79	79	90	
	54.5	97	93	91	87	82	80	79	79	90	
2000	99.8	104	101	95	100	93	90	88	87	100	
	79.8	101	97	93	97	90	87	82	81	97	
	59.6	99	96	92	93	87	85	83	83	94	
	53.9	99	95	93	92	86	84	83	84	94	
2144	99.8	105	103	97	101	95	92	89	88	101	
	79.8	102	100	95	98	92	88	84	83	98	
	59.6	100	98	94	94	89	86	84	85	96	
	53.9	100	97	95	94	88	86	85	85	95	

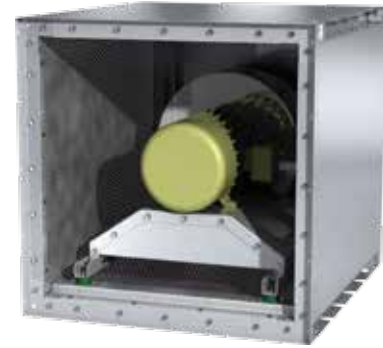
Performance certified is for installation type A: Free inlet, Free outlet. Power rating (Bhp) does not include transmission losses. Performance ratings do not include the effects of appurtenances (accessories).

Values shown are for inlet L_{Wi}, L_{WiA} and outlet L_{Wo}, L_{WoA} sound power levels for installation Type A: Free inlet, Free outlet. The A-weighted sound ratings shown have been calculated per AMCA International Standard 301. The AMCA International Certified Ratings Seal for Sound for model HPA applies to the single L_{WiA} and L_{WoA} values.

Plenum Size 30 - Standard

Maximum RPM	2144
HPA Motor on Frame Limit	324T
Wheel Diameter	30.00 [in.] 762 [mm]
Peak Power	(rpm / 562) ³ [hp] (rpm / 620) ³ [kW]
Outlet Velocity	cfm / 17.02 [ft/min] m ³ /hr / 5691 [m/s]
Tip Speed	rpm x 7.85 [ft/min] rpm x 0.0399 [m/s]
% Wide Open Volume (%WOV)	cfm / (rpm x 0.1590) [%] m ³ /hr / (rpm x 0.2701) [%]

Imperial data — [Metric data](#)



CFM	OV	STATIC PRESSURE (in. wg)																	
		1.0		2.0		3.0		4.0		5.0		6.0		7.0		8.0		9.0	
		RPM	BHP	RPM	BHP	RPM	BHP	RPM	BHP	RPM	BHP	RPM	BHP	RPM	BHP	RPM	BHP	RPM	BHP
15000	882	1067	5.26	1174	8.04	1271	11.02	1365	14.10	1455	17.27	1540	20.54	1619	23.91				
16000	940	1123	5.99	1226	8.92	1318	12.05	1409	15.28	1494	18.63	1577	22.03	1656	25.54				
17000	999	1180	6.80	1279	9.87	1368	13.14	1453	16.55	1537	20.03	1616	23.62	1693	27.26	1766	31.00		
18000	1058	1237	7.69	1332	10.92	1419	14.32	1499	17.90	1580	21.52	1656	25.27	1731	29.08	1804	32.95	1872	36.93
19000	1117	1295	8.67	1387	12.05	1470	15.59	1548	19.30	1624	23.11	1700	26.99	1770	30.99	1841	35.01	1910	39.11
20000	1175	1353	9.74	1441	13.27	1523	16.95	1598	20.79	1669	24.80	1743	28.82	1813	32.95	1880	37.19	1947	41.42
21000	1234	1411	10.91	1497	14.60	1576	18.41	1649	22.39	1719	26.53	1787	30.75	1856	35.01	1922	39.39	1986	43.84
22000	1293	1470	12.17	1553	16.01	1629	19.98	1701	24.10	1769	28.37	1833	32.79	1900	37.19	1965	41.70	2027	46.31
23000	1352	1529	13.55	1609	17.53	1684	21.66	1753	25.92	1820	30.32	1883	34.87	1945	39.50	2009	44.13	2070	48.87
24000	1410	1589	15.05	1666	19.17	1738	23.45	1806	27.85	1871	32.39	1933	37.07	1992	41.88	2053	46.69		
25000	1469	1649	16.65	1723	20.92	1793	25.36	1860	29.90	1922	34.58	1983	39.39	2041	44.33	2097	49.38		
26000	1528	1709	18.39	1781	22.79	1849	27.40	1914	32.07	1975	36.89	2034	41.84	2092	46.91				

RPM	% WOV	Inlet Sound Power, L _{Wi} [dB ref 10 ⁻¹² watts]								
		1	2	3	4	5	6	7	8	L _{WiA}
750	99.7	79	85	81	72	73	73	64	57	79
	80.5	77	87	79	70	70	67	62	56	77
	59.1	75	83	76	68	69	68	63	56	75
	51.7	86	83	79	69	67	65	61	55	75
1000	99.6	85	83	99	79	78	78	73	66	92
	80.4	80	81	96	76	76	73	68	62	88
	60.0	78	81	96	74	74	72	68	63	88
	53.3	91	89	87	76	74	72	66	61	82
1400	99.5	99	87	104	87	86	85	83	75	97
	80.0	94	84	103	83	83	80	76	71	95
	60.4	88	82	101	80	80	78	75	71	93
	55.9	99	96	99	86	83	81	75	71	93
1770	99.6	95	92	99	96	92	90	88	82	99
	80.0	90	88	97	93	89	86	81	77	95
	59.6	90	85	96	88	85	83	79	77	92
	55.2	89	86	96	89	85	83	80	77	92
2000	99.5	97	94	98	103	97	95	92	90	103
	79.8	93	89	97	101	94	91	86	81	100
	60.0	97	93	100	98	92	88	84	82	99
	53.5	93	88	99	99	89	87	83	82	99
2144	99.5	98	96	99	104	99	97	94	91	105
	79.8	94	91	98	102	96	93	88	83	102
	60	98	95	101	100	94	90	86	84	101
	53.5	94	91	100	101	91	88	85	83	100

RPM	% WOV	Outlet Sound Power, L _{Wo} [dB ref 10 ⁻¹² watts]								
		1	2	3	4	5	6	7	8	L _{Wo} A
750	100	79	90	73	70	68	68	59	54	77
	80.1	78	89	72	68	65	62	57	53	75
	58.9	76	86	69	67	63	60	57	54	73
	52.4	83	80	72	67	64	60	57	54	71
1000	99.8	85	83	86	77	76	73	68	61	82
	79.9	84	83	85	74	74	69	63	58	80
	59.9	81	83	82	71	72	67	63	61	78
	52.9	81	84	82	70	72	67	64	62	78
1400	99.9	96	91	94	85	84	81	79	71	90
	79.6	93	88	92	83	82	77	72	67	88
	60.2	91	86	89	79	80	74	73	71	85
	51.8	90	86	88	79	80	74	74	72	85
1770	99.8	100	96	93	93	91	88	85	80	96
	79.1	98	94	91	91	88	84	79	74	93
	60	96	92	89	87	85	81	79	78	90
	52.2	96	93	90	86	84	81	80	80	90
2000	99.8	104	99	94	99	95	91	87	86	100
	79.6	100	96	91	97	92	88	83	79	98
	59.6	99	95	91	92	89	86	83	82	94
	52.9	99	95	91	91	88	86	83	83	94
2144	99.8	105	101	96	100	97	93	89	88	102
	79.6	101	98	93	98	94	90	85	81	99
	59.6	100	97	93	93	91	88	84	84	96
	52.9	100	97	93	93	89	87	84	84	96

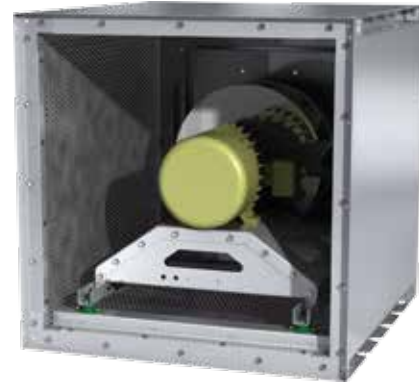
Performance certified is for installation type A: Free inlet, Free outlet. Power rating (Bhp) does not include transmission losses. Performance ratings do not include the effects of appurtenances (accessories).

Values shown are for inlet L_{Wi}, L_{WiA} and outlet L_{Wo}, L_{WoA} sound power levels for installation Type A: Free inlet, Free outlet. The A-weighted sound ratings shown have been calculated per AMCA International Standard 301. The AMCA International Certified Ratings Seal for Sound for model HPA applies to the single L_{WiA} and L_{WoA} values.

Plenum Size 30 - Large

Maxium RPM	2144
HPA Motor on Frame Limit	324T
Wheel Diameter	30.00 [in.] 762 [mm]
Peak Power	(rpm / 563) ³ [hp] (rpm / 621) ³ [kW]
Outlet Velocity	cfm / 20.63 [ft/min] m ³ /hr / 6899 [m/s]
Tip Speed	rpm x 7.85 [ft/min] rpm x 0.0399 [m/s]
% Wide Open Volume (%WOV)	cfm / (rpm x 0.1597) [%] m ³ /hr / (rpm x 0.2713) [%]

Imperial data — [Metric data](#)



CFM	OV	STATIC PRESSURE (in. wg)																	
		1.0		2.0		3.0		4.0		5.0		6.0		7.0		8.0		9.0	
		RPM	BHP	RPM	BHP	RPM	BHP	RPM	BHP	RPM	BHP	RPM	BHP	RPM	BHP	RPM	BHP	RPM	BHP
15000	727	1059	5.11	1167	7.85	1265	10.80	1359	13.87	1450	17.02	1536	20.25	1616	23.60				
16000	776	1115	5.82	1217	8.70	1312	11.79	1403	15.00	1487	18.35	1573	21.71	1652	25.19				
17000	824	1171	6.61	1270	9.63	1361	12.84	1447	16.22	1529	19.70	1609	23.27	1688	26.87	1762	30.58		
18000	873	1227	7.48	1323	10.63	1411	13.98	1493	17.51	1573	21.13	1648	24.89	1725	28.65	1798	32.49	1868	36.43
19000	921	1284	8.43	1377	11.72	1461	15.21	1541	18.87	1617	22.66	1692	26.53	1762	30.53	1835	34.50	1904	38.56
20000	970	1342	9.47	1431	12.90	1512	16.53	1590	20.32	1663	24.27	1736	28.28	1805	32.42	1872	36.62	1941	40.81
21000	1018	1400	10.60	1486	14.18	1565	17.94	1640	21.87	1711	25.95	1780	30.14	1848	34.40	1913	38.78	1978	43.17
22000	1067	1458	11.84	1541	15.55	1618	19.46	1690	23.52	1760	27.73	1826	32.09	1892	36.48	1956	40.99	2017	45.61
23000	1115	1517	13.17	1597	17.04	1672	21.08	1741	25.28	1809	29.62	1874	34.10	1937	38.69	2000	43.32	2060	48.06
24000	1164	1576	14.62	1653	18.62	1726	22.80	1794	27.14	1859	31.62	1923	36.24	1983	40.98	2044	45.77		
25000	1212	1636	16.18	1710	20.33	1780	24.65	1847	29.12	1910	33.74	1972	38.49	2032	43.36	2089	48.35		
26000	1260	1696	17.85	1767	22.15	1835	26.61	1900	31.22	1961	35.98	2022	40.86	2081	45.86				

RPM	% WOVS	Inlet Sound Power, L _{W_i} [dB ref 10 ⁻¹² watts]									
		1	2	3	4	5	6	7	8	L _{W_iA}	
750	99.7	77	89	83	77	80	79	67	62	85	
	79.7	75	87	81	75	75	75	64	59	81	
	59.8	73	82	79	73	71	69	63	58	77	
	55.4	73	79	77	72	70	68	62	58	76	
1000	99.6	82	84	104	82	85	84	81	72	96	
	80.3	79	83	98	81	82	81	73	68	91	
	59.9	76	82	92	77	78	75	68	65	86	
	55.1	76	84	90	76	77	74	68	65	84	
1400	99.5	93	88	107	89	90	90	89	83	101	
	80.4	89	85	105	86	88	87	85	78	98	
	60.2	88	81	99	84	85	83	78	74	93	
	54.3	88	81	99	83	84	82	77	74	92	
1770	99.6	95	92	103	102	95	95	94	92	104	
	79.9	93	88	99	97	92	91	90	85	99	
	60.1	91	85	98	93	91	89	85	81	96	
	52.9	91	86	100	93	90	89	85	81	97	
2000	99.6	97	94	100	105	99	97	96	97	106	
	79.7	94	89	97	102	95	94	92	90	102	
	59.6	92	88	98	97	94	92	88	85	100	
	53.6	92	88	99	96	94	92	88	84	99	
2144	99.6	98	97	101	106	101	99	97	99	107	
	79.7	96	92	98	103	97	95	93	91	104	
	59.6	94	90	99	99	95	94	90	86	101	
	53.6	94	91	100	98	95	93	90	86	101	

RPM	% WOVS	Outlet Sound Power, L _{W_o} [dB ref 10 ⁻¹² watts]									
		1	2	3	4	5	6	7	8	L _{W_oA}	
750	100	79	87	75	74	74	72	62	60	79	
	79.8	75	85	73	71	68	66	59	59	75	
	60.2	73	85	71	69	64	62	59	59	73	
	53.6	83	83	74	70	65	62	60	59	73	
1000	99.8	86	85	88	79	81	78	75	63	86	
	79.4	85	84	86	76	77	74	67	61	83	
	60.4	82	84	84	72	74	69	65	63	79	
	55.2	81	86	83	71	73	68	65	63	79	
1400	99.8	94	89	97	86	87	86	83	75	93	
	79.9	92	87	91	83	84	81	78	70	89	
	60.3	90	86	88	80	81	77	74	72	86	
	54	89	87	88	79	80	76	74	72	85	
1770	99.8	100	95	96	97	94	91	88	85	99	
	79.8	100	92	91	91	90	86	83	78	94	
	59.7	96	91	90	89	87	83	81	79	92	
	52.7	96	91	90	87	85	82	80	79	91	
2000	99.9	102	97	93	101	97	93	90	89	102	
	80	102	95	91	97	94	90	86	82	98	
	60.2	98	94	90	92	91	86	83	82	95	
	54.5	98	93	91	92	90	86	83	82	94	
2144	99.9	103	99	95	102	99	95	91	90	104	
	80	103	98	93	98	96	92	87	84	100	
	60.2	100	96	92	93	92	88	85	84	97	
	54.5	99	96	93	93	91	88	85	84	96	

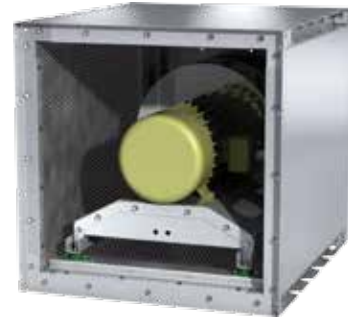
Performance certified is for installation type A: Free inlet, Free outlet. Power rating (Bhp) does not include transmission losses. Performance ratings do not include the effects of appurtenances (accessories).

Values shown are for inlet L_{W_i}, L_{W_iA} and outlet L_{W_o}, L_{W_oA} sound power levels for installation Type A: Free inlet, Free outlet. The A-weighted sound ratings shown have been calculated per AMCA International Standard 301. The AMCA International Certified Ratings Seal for Sound for model HPA applies to the single L_{W_iA} and L_{W_oA} values.

Plenum Size 33 - Compact

Maximum RPM	1949
HPA Motor on Frame Limit	326T
Wheel Diameter	33.00 [in.] 838 [mm]
Peak Power	(rpm / 478) ³ [hp] (rpm / 527) ³ [kW]
Outlet Velocity	cfm / 17.02 [ft/min] m ³ /hr / 5691 [m/s]
Tip Speed	rpm x 8.64 [ft/min] rpm x 0.0439 [m/s]
% Wide Open Volume (%WOV)	cfm / (rpm x 0.2076) [%] m ³ /hr / (rpm x 0.3528) [%]

Imperial data — [Metric data](#)



CFM	OV	STATIC PRESSURE (in. wg)															
		1.0		2.0		3.0		4.0		5.0		6.0		7.0		8.0	
		RPM	BHP	RPM	BHP	RPM	BHP	RPM	BHP	RPM	BHP	RPM	BHP	RPM	BHP	RPM	BHP
14000	823	806	4.22	924	7.05	1032	10.03	1129	13.14								
16000	940	888	5.36	994	8.51	1094	11.82	1186	15.26	1272	18.80						
18000	1058	973	6.75	1069	10.19	1161	13.86	1248	17.61	1330	21.48	1407	25.44				
20000	1175	1061	8.42	1148	12.14	1233	16.11	1314	20.22	1391	24.42	1465	28.72	1536	33.08	1602	37.57
22000	1293	1151	10.39	1230	14.40	1307	18.66	1384	23.11	1457	27.64	1527	32.27	1594	37.00	1660	41.76
24000	1410	1242	12.69	1313	16.99	1386	21.54	1457	26.28	1525	31.19	1593	36.13	1657	41.17	1718	46.34
26000	1528	1333	15.36	1400	19.95	1467	24.78	1532	29.83	1598	35.01	1660	40.37	1723	45.71		
28000	1646	1425	18.42	1488	23.31	1550	28.42	1612	33.75	1672	39.25	1733	44.88				
30000	1763	1517	21.91	1578	27.09	1634	32.48	1693	38.10	1749	43.90	1807	49.82				
32000	1881	1609	25.85	1668	31.33	1721	37.02	1776	42.91	1830	48.99						
34000	1998	1702	30.27	1759	36.05	1810	42.04	1859	48.21								
36000	2116	1795	35.20	1850	41.29	1899	47.58										

RPM	% WOV	Inlet Sound Power, L _{Wi} [dB ref 10 ⁻¹² watts]								
		1	2	3	4	5	6	7	8	L _{WiA}
750	99.3	82	89	86	76	77	76	66	59	83
	80.0	80	90	82	74	73	67	64	58	80
	59.2	78	87	81	73	70	65	64	58	77
	54.3	87	86	83	74	71	67	65	58	79
1000	99.6	87	86	106	84	83	81	74	66	97
	80.2	84	85	102	80	79	75	67	63	94
	59.6	83	84	99	78	78	72	69	65	91
	55.5	82	85	96	78	78	73	69	66	89
1400	99.6	94	92	111	90	90	89	85	75	103
	80.4	92	89	113	87	86	84	77	73	104
	59.5	91	86	107	85	84	81	77	75	99
	55.3	89	87	107	85	85	81	78	75	99
1770	99.6	99	96	103	100	97	95	93	86	103
	79.5	96	93	101	98	93	90	84	79	99
	60.0	97	91	102	95	90	87	83	81	98
	54.7	96	88	103	94	90	87	83	81	98
2000	99.5	104	97	104	109	101	98	96	93	108
	80.1	101	95	102	104	97	94	88	84	104
	59.9	100	93	104	100	95	92	86	84	102
	54.2	100	93	105	101	94	91	87	85	102

RPM	% WOV	Outlet Sound Power, L _{Wo} [dB ref 10 ⁻¹² watts]								
		1	2	3	4	5	6	7	8	L _{WoA}
750	94.3	84	92	76	73	70	69	61	55	79
	80.0	84	91	75	71	66	64	60	55	77
	59.6	80	88	71	70	64	63	61	56	75
	53.5	87	84	76	73	66	63	61	57	75
1000	99.8	92	88	88	80	78	76	70	62	85
	80.4	92	87	87	78	76	71	66	61	83
	60.3	87	88	85	74	74	69	66	62	81
	53.9	93	93	84	77	75	69	66	63	82
1400	99.8	100	95	96	89	85	83	80	72	93
	79.9	98	92	94	86	83	79	75	69	90
	59.8	96	90	91	83	80	76	76	73	87
	56.1	95	91	91	83	80	76	76	74	87
1770	99.8	106	100	97	97	92	89	87	83	98
	79.8	101	97	95	94	89	85	81	78	95
	58.8	100	97	94	91	86	83	82	82	93
	54.5	100	96	94	90	85	83	82	82	93
2000	99.8	107	104	98	103	96	93	91	90	103
	79.8	104	101	96	100	93	89	85	84	100
	59.6	102	99	95	96	90	88	85	86	97
	53.9	102	98	96	95	89	87	86	87	97

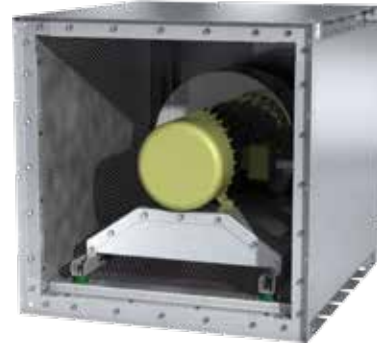
Performance certified is for installation type A: Free inlet, Free outlet. Power rating (Bhp) does not include transmission losses. Performance ratings do not include the effects of appurtenances (accessories).

Values shown are for inlet L_{Wi}, L_{WiA} and outlet L_{Wo}, L_{WoA} sound power levels for installation Type A: Free inlet, Free outlet. The A-weighted sound ratings shown have been calculated per AMCA International Standard 301. The AMCA International Certified Ratings Seal for Sound for model HPA applies to the single L_{WiA} and L_{WoA} values.

Plenum Size 33 - Standard

Maximum RPM	1949
HPA Motor on Frame Limit	326T
Wheel Diameter	33.00 [in.] 838 [mm]
Peak Power	(rpm / 479) ³ [hp] (rpm / 529) ³ [kW]
Outlet Velocity	cfm / 20.63 [ft/min] m ³ /hr / 6899 [m/s]
Tip Speed	rpm x 8.64 [ft/min] rpm x 0.0439 [m/s]
% Wide Open Volume (%WOV)	cfm / (rpm x 0.2116) [%] m ³ /hr / (rpm x 0.3595) [%]

Imperial data — [Metric data](#)



CFM	OV	STATIC PRESSURE (in. wg)															
		1.0		2.0		3.0		4.0		5.0		6.0		7.0		8.0	
		RPM	BHP	RPM	BHP	RPM	BHP	RPM	BHP	RPM	BHP	RPM	BHP	RPM	BHP	RPM	BHP
14000	679	800	3.96	916	6.73	1023	9.67	1120	12.75								
16000	776	881	5.00	986	8.07	1084	11.32	1176	14.71	1262	18.23						
18000	873	964	6.27	1061	9.61	1150	13.19	1236	16.89	1318	20.70	1396	24.63				
20000	970	1048	7.76	1140	11.39	1222	15.26	1302	19.28	1378	23.43	1452	27.66	1523	31.99	1590	36.44
22000	1067	1134	9.51	1220	13.45	1298	17.59	1371	21.95	1444	26.38	1513	30.95	1580	35.60	1646	40.32
24000	1164	1221	11.56	1302	15.80	1376	20.23	1446	24.85	1510	29.67	1578	34.49	1642	39.47	1703	44.55
26000	1260	1309	13.93	1385	18.48	1456	23.19	1522	28.09	1585	33.17	1645	38.40	1707	43.63	1766	49.00
28000	1357	1398	16.64	1470	21.49	1537	26.50	1600	31.68	1661	37.03	1718	42.55	1774	48.20		
30000	1454	1488	19.74	1556	24.86	1620	30.20	1681	35.65	1738	41.28	1794	47.07				
32000	1551	1578	23.23	1642	28.64	1703	34.29	1762	40.03	1817	45.94						
34000	1648	1669	27.15	1729	32.83	1788	38.78	1844	44.85								
36000	1745	1761	31.52	1817	37.48	1873	43.72										

RPM	% WOVS	Inlet Sound Power, L _{Wi} [dB ref 10 ⁻¹² watts]										L _{WiA}
		1	2	3	4	5	6	7	8			
750	99.7	83	89	84	75	76	76	67	60	82		
	80.5	81	90	82	73	73	70	65	59	80		
	59.1	79	86	79	71	71	70	65	59	78		
	51.7	89	87	82	72	70	67	64	58	78		
1000	99.6	88	86	102	82	81	81	76	69	95		
	80.4	83	84	99	79	79	76	71	65	91		
	60	81	84	99	77	77	75	71	66	91		
	53.3	94	92	90	79	77	75	69	64	85		
1400	99.5	103	90	107	89	89	88	86	78	100		
	80	97	87	106	86	86	83	79	74	98		
	60.4	91	85	104	83	83	81	78	74	96		
	55.9	103	99	102	89	86	84	78	74	96		
1770	99.6	99	95	102	99	95	93	91	85	101		
	80	93	91	100	96	92	89	84	80	98		
	59.6	93	88	99	91	88	86	82	80	95		
	55.2	93	89	99	92	88	86	83	80	95		
2000	99.5	101	97	101	106	100	98	95	93	106		
	79.8	97	92	100	104	97	94	88	84	103		
	60	100	96	103	101	95	91	87	85	102		
	53.5	97	92	102	102	92	90	86	84	102		

RPM	% WOVS	Outlet Sound Power, L _{Wo} [dB ref 10 ⁻¹² watts]										L _{WoA}
		1	2	3	4	5	6	7	8			
750	100	83	93	76	73	71	71	62	57	80		
	80.1	81	92	75	71	68	65	60	56	78		
	58.9	80	89	72	70	66	63	60	56	76		
	52.4	86	83	75	70	67	63	60	57	74		
1000	99.8	89	86	89	80	79	76	71	64	85		
	79.9	87	86	88	77	77	72	66	61	83		
	59.9	84	86	85	74	75	70	66	64	81		
	52.9	84	87	85	73	75	70	67	65	81		
1400	99.9	99	94	97	88	87	84	82	74	93		
	79.6	96	92	94	86	85	80	75	70	90		
	60.2	94	89	92	82	83	77	76	74	88		
	51.8	93	89	91	82	83	77	77	75	88		
1770	99.8	104	99	96	96	94	91	87	83	99		
	79.1	101	97	94	94	91	87	82	77	96		
	60	99	95	92	90	87	84	82	81	93		
	52.2	99	96	93	89	87	84	83	83	93		
2000	99.8	107	102	96	102	98	94	90	89	103		
	79.6	103	99	94	100	95	91	86	82	100		
	59.6	102	98	94	95	92	89	85	85	97		
	52.9	102	98	94	94	90	89	86	85	97		

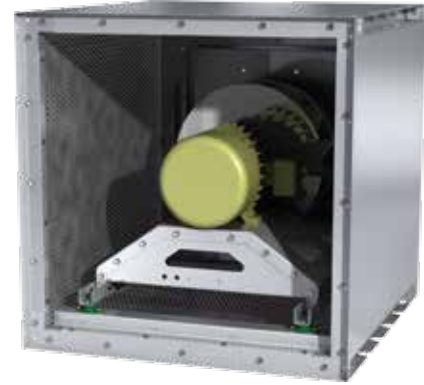
Performance certified is for installation type A: Free inlet, Free outlet. Power rating (Bhp) does not include transmission losses. Performance ratings do not include the effects of appurtenances (accessories).

Values shown are for inlet L_{Wi}, L_{WiA} and outlet L_{Wo}, L_{WoA} sound power levels for installation Type A: Free inlet, Free outlet. The A-weighted sound ratings shown have been calculated per AMCA International Standard 301. The AMCA International Certified Ratings Seal for Sound for model HPA applies to the single L_{WiA} and L_{WoA} values.

Plenum Size 33 - Large

Maxium RPM	1949
HPA Motor on Frame Limit	326T
Wheel Diameter	33.00 [in.] 838 [mm]
Peak Power	(rpm / 481) ³ [hp] (rpm / 530) ³ [kW]
Outlet Velocity	cfm / 25.21 [ft/min] m ³ /hr / 8431 [m/s]
Tip Speed	rpm x 8.64 [ft/min] rpm x 0.0439 [m/s]
% Wide Open Volume (%WOV)	cfm / (rpm x 0.2126) [%] m ³ /hr / (rpm x 0.3612) [%]

Imperial data — [Metric data](#)



CFM	OV	STATIC PRESSURE (in. wg)															
		1.0		2.0		3.0		4.0		5.0		6.0		7.0		8.0	
		RPM	BHP	RPM	BHP	RPM	BHP	RPM	BHP	RPM	BHP	RPM	BHP	RPM	BHP	RPM	BHP
14000	555	795	3.86	912	6.60	1019	9.53	1118	12.59								
16000	635	875	4.87	981	7.90	1079	11.14	1173	14.50	1259	17.98						
18000	714	957	6.09	1055	9.38	1145	12.92	1231	16.62	1314	20.40	1392	24.29				
20000	793	1040	7.54	1132	11.11	1216	14.93	1296	18.92	1372	23.06	1447	27.25	1519	31.54	1587	35.96
22000	873	1125	9.25	1212	13.09	1291	17.18	1365	21.48	1437	25.90	1506	30.47	1574	35.07	1641	39.74
24000	952	1211	11.24	1293	15.37	1367	19.73	1438	24.29	1504	29.05	1571	33.86	1634	38.84	1696	43.87
26000	1031	1298	13.54	1375	17.95	1446	22.59	1513	27.42	1577	32.44	1638	37.61	1700	42.83	1758	48.21
28000	1111	1386	16.18	1459	20.87	1527	25.79	1589	30.90	1651	36.17	1710	41.62	1767	47.20		
30000	1190	1476	19.17	1544	24.16	1608	29.35	1669	34.73	1727	40.29	1784	45.99				
32000	1269	1567	22.56	1629	27.83	1691	33.30	1749	38.96	1805	44.79						
34000	1349	1657	26.35	1715	31.92	1775	37.67	1831	43.61	1884	49.71						
36000	1428	1748	30.58	1802	36.44	1859	42.48	1913	48.70								

RPM	% WOV	Inlet Sound Power, L _W [dB ref 10 ⁻¹² watts]								
		1	2	3	4	5	6	7	8	L _{WA}
750	99.7	81	92	86	80	83	82	70	65	88
	79.7	79	91	84	78	78	78	67	62	84
	59.8	76	85	82	76	74	72	65	61	80
	55.4	76	82	80	75	73	71	65	61	79
1000	99.6	85	87	107	85	88	86	84	75	99
	80.3	82	86	101	84	85	84	76	71	94
	59.9	79	86	95	80	81	78	71	68	89
	55.1	79	87	93	79	80	77	71	68	87
1400	99.5	97	91	110	92	93	93	92	86	104
	80.4	92	88	108	89	91	90	88	81	101
	60.2	91	85	102	87	88	86	81	77	96
	54.3	92	85	102	86	87	85	80	77	95
1770	99.6	98	95	106	105	98	98	97	95	106
	79.9	96	92	102	100	95	94	93	88	102
	60.1	94	88	101	96	93	92	88	84	99
	52.9	94	90	103	96	93	92	88	84	100
2000	99.6	100	98	103	108	102	100	98	100	109
	79.7	98	93	100	105	98	97	95	92	105
	59.6	96	91	101	100	96	95	91	87	102
	53.6	96	92	102	99	97	95	91	87	102

RPM	% WOV	Outlet Sound Power, L _{Wo} [dB ref 10 ⁻¹² watts]								
		1	2	3	4	5	6	7	8	L _{WoA}
750	100.0	83	90	78	77	77	75	65	63	82
	79.8	78	88	76	74	71	69	62	62	78
	60.2	77	88	74	71	67	65	62	62	76
	53.6	86	86	76	73	68	64	62	62	76
1000	99.8	89	88	91	82	84	81	78	66	89
	79.4	89	87	89	79	80	77	70	64	85
	60.4	85	87	87	75	77	72	68	65	82
	55.2	85	89	86	74	76	71	67	66	82
1400	99.8	97	92	100	89	90	88	86	78	96
	79.9	95	90	94	86	87	84	80	73	92
	60.3	93	89	91	83	84	80	77	75	88
	54.0	93	90	91	82	83	79	77	75	88
1770	99.8	103	98	98	100	97	94	91	88	102
	79.8	103	95	94	94	93	89	86	80	97
	59.7	100	94	93	91	90	86	84	82	95
	52.7	99	94	93	90	88	85	83	82	94
2000	99.9	106	100	96	104	100	96	92	91	105
	80.0	105	98	94	99	97	93	88	85	101
	60.2	102	97	93	95	94	89	86	85	98
	54.5	101	96	94	94	93	89	86	85	97

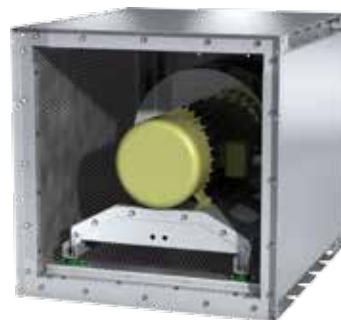
Performance certified is for installation type A: Free inlet, Free outlet. Power rating (Bhp) does not include transmission losses. Performance ratings do not include the effects of appurtenances (accessories).

Values shown are for inlet L_{Wi}, L_{WiA} and outlet L_{Wo}, L_{WoA} sound power levels for installation Type A: Free inlet, Free outlet. The A-weighted sound ratings shown have been calculated per AMCA International Standard 301. The AMCA International Certified Ratings Seal for Sound for model HPA applies to the single L_{WiA} and L_{WoA} values.

Plenum Size 36 - Compact

Maxium RPM	1720
HPA Motor on Frame Limit	326T
Wheel Diameter	36.50 [in.] 927 [mm]
Peak Power	(rpm / 404) ³ [hp] (rpm / 446) ³ [kW]
Outlet Velocity	cfm / 20.63 [ft/min] m ³ /hr / 6899 [m/s]
Tip Speed	rpm x 9.56 [ft/min] rpm x 0.0485 [m/s]
% Wide Open Volume (%WOV)	cfm / (rpm x 0.2810) [%] m ³ /hr / (rpm x 0.4773) [%]

Imperial data — [Metric data](#)



CFM	OV	STATIC PRESSURE (in. wg)													
		1.0		2.0		3.0		4.0		5.0		6.0		7.0	
		RPM	BHP	RPM	BHP	RPM	BHP	RPM	BHP	RPM	BHP	RPM	BHP	RPM	BHP
18000	873	755	5.63	857	9.24	952	13.04	1039	16.96						
20000	970	816	6.84	911	10.74	1000	14.87	1082	19.15	1159	23.54				
22000	1067	879	8.25	966	12.45	1049	16.93	1128	21.52	1202	26.25	1272	31.09		
24000	1164	944	9.88	1024	14.37	1102	19.15	1176	24.10	1247	29.17	1314	34.33	1379	39.61
26000	1260	1010	11.77	1084	16.54	1156	21.61	1227	26.93	1295	32.29	1359	37.83	1421	43.42
28000	1357	1077	13.91	1145	18.97	1212	24.34	1280	29.93	1344	35.71	1407	41.51	1466	47.49
30000	1454	1144	16.34	1207	21.68	1272	27.34	1335	33.24	1396	39.33	1456	45.52		
32000	1551	1212	19.07	1272	24.71	1332	30.65	1390	36.85	1450	43.22	1506	49.80		
34000	1648	1280	22.12	1337	28.06	1393	34.28	1449	40.77	1505	47.45				
36000	1745	1347	25.52	1403	31.76	1455	38.26	1509	45.03						
38000	1842	1415	29.29	1470	35.82	1519	42.61	1570	49.66						
40000	1939	1484	33.43	1536	40.27	1584	47.35								

RPM	% WOV	Inlet Sound Power, L _{Wi} [dB ref 10 ⁻¹² watts]										L _{Wi} A
		1	2	3	4	5	6	7	8			
750	99.3	85	92	89	79	80	79	69	62	86		
	80.0	83	94	85	77	76	70	67	61	83		
	59.2	82	90	84	76	73	68	67	61	81		
	54.3	91	90	86	78	74	70	68	61	82		
1000	99.6	91	90	109	87	86	84	77	69	101		
	80.2	88	88	105	83	82	78	70	66	97		
	59.6	87	88	102	81	81	75	72	68	94		
	55.5	86	88	99	81	81	76	72	69	92		
1400	99.6	98	95	114	93	93	92	88	78	106		
	80.4	96	92	116	90	89	87	80	76	108		
	59.5	94	89	111	88	87	84	80	78	102		
	55.3	93	90	110	88	88	84	81	78	102		
1770	99.6	103	100	106	103	100	98	96	89	106		
	79.5	100	96	104	101	96	93	87	82	102		
	60.0	100	95	105	98	93	90	86	84	101		
	54.7	100	91	106	97	93	90	86	84	101		
2000	99.5	107	101	107	112	104	101	99	96	111		
	80.1	105	98	105	107	100	97	91	87	107		
	59.9	103	96	107	104	98	95	89	87	105		
	54.2	104	96	108	104	97	94	90	88	105		

RPM	% WOV	Outlet Sound Power, L _{Wo} [dB ref 10 ⁻¹² watts]										L _{Wo} A
		1	2	3	4	5	6	7	8			
750	94.3	87	95	79	76	73	72	64	58	83		
	80.0	87	94	78	74	69	67	63	58	80		
	59.6	83	91	74	73	67	66	64	59	78		
	53.5	90	87	79	76	69	66	64	60	78		
1000	99.8	96	91	91	83	81	79	73	65	88		
	80.4	95	90	90	81	79	74	69	64	86		
	60.3	90	91	88	77	77	72	69	65	84		
	53.9	97	96	87	80	78	72	69	66	85		
1400	99.8	103	98	99	92	88	86	83	75	96		
	79.9	102	96	97	89	86	82	78	72	93		
	59.8	99	94	94	86	83	79	79	76	90		
	56.1	98	94	94	86	83	79	79	77	90		
1770	99.8	109	103	100	100	95	92	90	86	101		
	79.8	104	100	98	97	92	88	84	81	98		
	58.8	103	100	97	94	89	86	85	85	96		
	54.5	103	99	97	93	88	86	85	85	96		
2000	99.8	111	107	101	106	99	96	94	93	106		
	79.8	108	104	99	103	96	92	88	87	103		
	59.6	105	102	98	99	93	91	88	89	100		
	53.9	105	101	99	98	92	90	89	90	100		

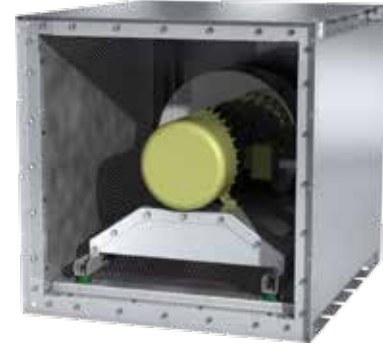
Performance certified is for installation type A: Free inlet, Free outlet. Power rating (Bhp) does not include transmission losses. Performance ratings do not include the effects of appurtenances (accessories).

Values shown are for inlet L_{Wi}, L_{Wi}A and outlet L_{Wo}, L_{Wo}A sound power levels for installation Type A: Free inlet, Free outlet. The A-weighted sound ratings shown have been calculated per AMCA International Standard 301. The AMCA International Certified Ratings Seal for Sound for model HPA applies to the single L_{Wi}A and L_{Wo}A values.

Plenum Size 36 - Standard

Maximum RPM	1720
HPA Motor on Frame Limit	326T
Wheel Diameter	36.50 [in.] 927 [mm]
Peak Power	(rpm / 405) ³ [hp] (rpm / 447) ³ [kW]
Outlet Velocity	cfm / 25.21 [ft/min] m ³ /hr / 8431 [m/s]
Tip Speed	rpm x 9.56 [ft/min] rpm x 0.0485 [m/s]
% Wide Open Volume (%WOV)	cfm / (rpm x 0.2863) [%] m ³ /hr / (rpm x 0.4864) [%]

Imperial data — Metric data



CFM	OV	STATIC PRESSURE (in. wg)													
		1.0		2.0		3.0		4.0		5.0		6.0		7.0	
		RPM	BHP	RPM	BHP	RPM	BHP	RPM	BHP	RPM	BHP	RPM	BHP	RPM	BHP
18000	714	749	5.27	849	8.80	943	12.53	1031	16.42						
20000	793	809	6.37	903	10.18	990	14.23	1073	18.44	1150	22.80				
22000	873	870	7.65	959	11.74	1039	16.11	1117	20.64	1192	25.30	1261	30.10		
24000	952	933	9.12	1017	13.49	1092	18.17	1166	23.00	1235	28.01	1303	33.10	1367	38.33
26000	1031	996	10.80	1076	15.47	1148	20.42	1215	25.61	1283	30.88	1346	36.35	1409	41.85
28000	1111	1060	12.71	1136	17.68	1205	22.91	1269	28.38	1332	34.01	1394	39.73	1452	45.64
30000	1190	1125	14.86	1197	20.15	1263	25.65	1325	31.40	1383	37.38	1442	43.40	1500	49.57
32000	1269	1190	17.28	1259	22.88	1322	28.67	1382	34.69	1438	40.93	1492	47.38		
34000	1349	1255	19.99	1321	25.88	1382	31.98	1440	38.28	1494	44.79				
36000	1428	1322	23.01	1384	29.18	1443	35.60	1499	42.17	1551	48.96				
38000	1507	1389	26.35	1448	32.80	1504	39.54	1558	46.40						
40000	1587	1456	30.03	1512	36.76	1567	43.80								

RPM	% WOV	Inlet Sound Power, L _{Wi} [dB ref 10 ⁻¹² watts]									
		1	2	3	4	5	6	7	8	L _{WiA}	
750	99.7	86	92	87	78	79	79	70	63	85	
	80.5	85	94	85	76	76	73	68	62	83	
	59.1	82	89	83	74	74	73	68	62	81	
	51.7	93	90	85	75	73	70	67	61	81	
1000	99.6	92	89	106	85	84	84	79	72	98	
	80.4	87	88	102	82	82	79	74	68	94	
	60	85	87	102	80	80	78	74	69	94	
	53.3	98	96	93	82	80	78	72	67	89	
1400	99.5	106	94	110	93	92	91	89	81	103	
	80	101	91	109	89	89	86	82	77	101	
	60.4	95	89	107	86	86	84	81	77	99	
	55.9	106	102	105	92	89	87	81	77	99	
1770	99.6	102	98	105	102	98	96	94	88	105	
	80	97	94	104	99	95	92	87	83	101	
	59.6	97	91	102	94	91	89	85	83	98	
	55.2	96	93	103	95	91	89	86	83	98	
2000	99.5	104	100	104	109	103	101	98	96	109	
	79.8	100	96	103	107	100	97	91	87	106	
	60	104	99	107	104	98	94	90	88	105	
	53.5	100	95	105	105	95	93	89	87	105	

RPM	% WOV	Outlet Sound Power, L _{Wo} [dB ref 10 ⁻¹² watts]									
		1	2	3	4	5	6	7	8	L _{WoA}	
750	100	86	96	79	76	74	74	65	60	83	
	80.1	84	95	78	74	71	68	63	59	82	
	58.9	83	92	75	73	69	66	63	60	79	
	52.4	89	86	78	73	70	66	63	60	77	
1000	99.8	92	90	92	83	82	79	74	67	88	
	79.9	90	89	91	80	80	75	69	64	86	
	59.9	87	89	88	77	78	73	69	67	84	
	52.9	87	90	88	76	78	73	70	68	84	
1400	99.9	102	97	100	91	90	87	85	77	96	
	79.6	100	95	97	89	88	83	78	73	94	
	60.2	97	92	95	85	86	80	79	77	91	
	51.8	96	93	94	85	86	80	80	78	91	
1770	99.8	107	102	99	99	97	94	91	86	102	
	79.1	105	100	97	97	94	90	85	80	99	
	60	103	99	95	93	91	87	85	84	96	
	52.2	102	100	96	92	90	87	86	86	96	
2000	99.8	111	105	99	105	101	97	93	92	106	
	79.6	106	102	97	103	98	94	89	85	104	
	59.6	105	101	97	98	95	92	89	88	100	
	52.9	105	101	97	97	94	92	89	89	100	

Performance certified is for installation type A: Free inlet, Free outlet. Power rating (Bhp) does not include transmission losses. Performance ratings do not include the effects of appurtenances (accessories).

Values shown are for inlet L_{Wi}, L_{WiA} and outlet L_{Wo}, L_{WoA} sound power levels for installation Type A: Free inlet, Free outlet. The A-weighted sound ratings shown have been calculated per AMCA International Standard 301. The AMCA International Certified Ratings Seal for Sound for model HPA applies to the single L_{WiA} and L_{WoA} values.

Design and Selection Support



Enjoy Greenheck's extraordinary service, before, during and after the sale.

Greenheck offers added value to our wide selection of top performing, energy-efficient products by providing several unique Greenheck service programs.

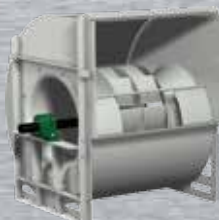
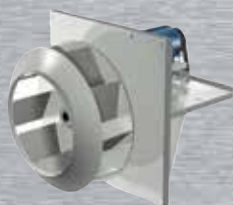
- Our Quick Delivery Program ensures shipment of our in-stock products within 24 hours of placing your order. Our Quick Build made-to-order products can be produced in 1-3-5-10- or 15-day production cycles, depending upon their complexity.
- Greenheck's free Computer Aided Product Selection program (CAPS), rated by many as the best in the industry, helps you conveniently and efficiently select the right products for the challenge at hand.
- Greenheck has been Green for a long time! Our energy-saving products and ongoing corporate commitment to sustainability can help you qualify for LEED credits.
- Our 3D service allows you to download, at no charge, easy-to-use AutoDesk™ Revit™ 3D drawings for many of our ventilation products.

Find out more about these special Greenheck services at greenheck.com



To-Scale Drawings and Fan Specifications

To-scale CAD drawings along with detailed centrifugal specifications can be found online at www.greenheck.com or within our Computer Aided Product Selection program (CAPS).

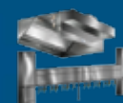
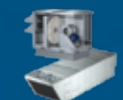
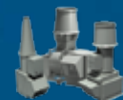


Building Value in Air

Greenheck delivers value to mechanical engineers by helping them solve virtually any air quality challenges their clients face with a comprehensive selection of

top quality, innovative air-related equipment. We offer extra value to contractors by providing easy-to-install, competitively priced, reliable products that arrive on time.

And building owners and occupants value the energy efficiency, low maintenance and quiet dependable operation they experience long after the construction project ends.



Our Commitment

As a result of our commitment to continuous improvement, Greenheck reserves the right to change specifications without notice.

Specific Greenheck product warranties are located on greenheck.com within the product area tabs and in the Library under Warranties.



Prepared to Support
Green Building Efforts

