



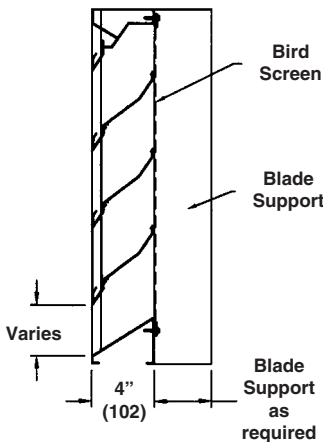
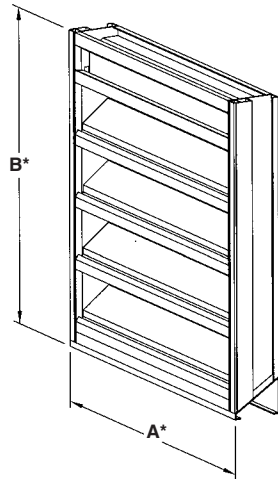
1300 ENTERPRISE ROAD GENEVA, ALABAMA 36340-0580 800-239-4621 FAX 1-800-508-1469 www.reliablelouvers.com

4375DFL DRAINABLE STATIONARY LOUVER

EXTRUDED ALUMINUM

UL LISTED FOR 50 PSF WINDLOAD

Florida Product Approval #FL12900



STANDARD CONSTRUCTION

FRAME

4" (102) deep, 6063T5 extruded aluminum with .081" (2.1) nominal wall thickness. Downspouts and caulking slots provided.

BLADES

6063T5 extruded aluminum, .081" (2.1) nominal wall thickness. Drainable blades are positioned at 37 1/2° angle and spaced approximately 5 3/32" (129) center to center.

SCREEN

5/8" x .040" (16 x 1) expanded, flattened aluminum bird screen in removable frame. Screen adds approximately 1/2" (13) to louver depth.

FINISH

Mill.

APPROXIMATE SHIPPING WEIGHT

6 lbs./ft.² (29.3 kg/m²).

MINIMUM SIZE

12"w x 12"h (305 x 305).

MAXIMUM SIZE

Maximum single ship section size 90"w x 120"h (2286 x 3048) or 120"w x 90"h (3048 x 2286). Maximum field assembled size of ship sections is 180"w x 120"h (4572 x 3048) or 240"w x 90"h (6096 x 2286). A maximum of two sections may be joined side by side. Single section heights only: **sections cannot be stacked in height.** Openings taller than the maximum louver height will need to be divided into multiple openings with suitable structural members. Structural members are not designed or provided by Reliable.

INSTALLATION

The 4375DFL must be installed per the appropriate installation detail. Reference the appropriate separate installation instruction sheets.

BLADE SUPPORTS

Factory installed on louvers over 30" (762) wide. Depth varies from 2" (51) to 6" (152) depending on louver size (consult Reliable for more information).



UL CLASSIFIED as a Wind Resistive Building Component in accordance with ASTM E330-02 for ±50 psf (2.39 kPA) windload. UL File No. R22052.

FEATURES

The 4375DFL offers:

- Meets 2007 Florida Building Code TAS202-94 requirements ±50 psf windload.
- 54% Free Area (48"w x 48"h [1219 x 1219]).
- Published performance ratings based on testing in accordance with AMCA Publication 511.
- High performance frame system with drainable head collects and removes water to provide excellent water penetration performance.
- Drain gutter in each blade minimizes water cascade between blades.
- Architecturally styled hidden mullions allowing continuous line appearance up to 120" (3048).
- All aluminum construction for low maintenance and high resistance to corrosion.
- All welded construction.

VARIATIONS

Variations to the basic design of these louvers are available at additional cost. They include:

- Extended sill.
- Front or rear security bars.
- Filter racks.
- A variety of bird and insect screens.
- Selection of finishes: prime coat, baked enamel (modified fluoropolymer), epoxy, Pearledize 50 & 70, Kynar, clear and color anodize. (Some variation in anodize color consistency is possible.)

LEED Material Information

VOC Content (g/l) - 0

Manufacturing Locations (MR 5.1)

Geneva, AL 36340

Parsons, KS 67357

Recycled Content (MR 4.1 & 4.2)

10% Post Consumer

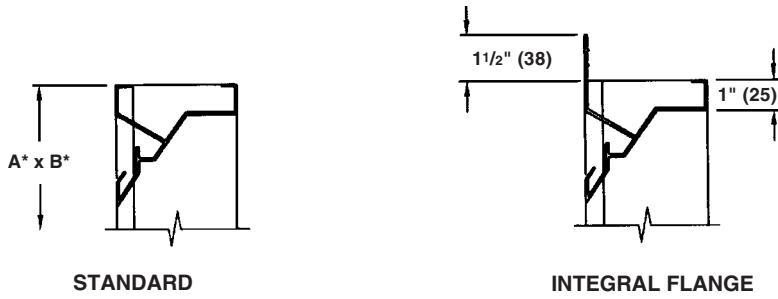
30% Pre-Consumer

Dimensions in inches, parenthesis () indicate millimeters.

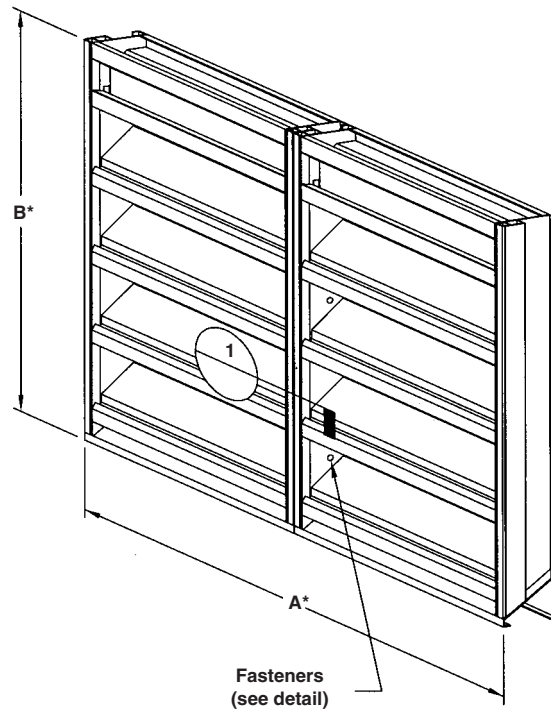
*Units furnished 1/4" (6) smaller than given opening dimensions.

| TAG | QTY. | SIZE | | FRAME | VARIATIONS |
|------------------------------------------|------|---------|--------------------------------|-------|------------|
| | | A*-WIDE | B*-HIGH | | |
| | | | | | |
| | | | | | |
| | | | | | |
| | | | | | |
| PROJECT ARCH./ENGR. REPRESENTATIVE | | | LOCATION CONTRACTOR DATE | | |

FRAME CONSTRUCTION

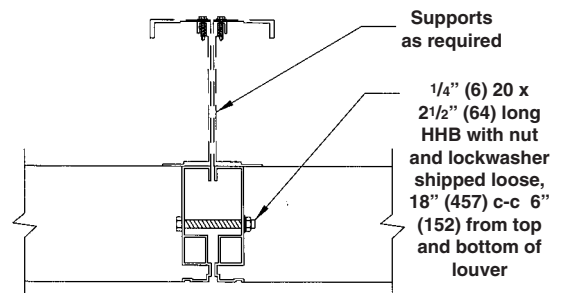


MULTI SECTION FIELD SPLICE DETAIL



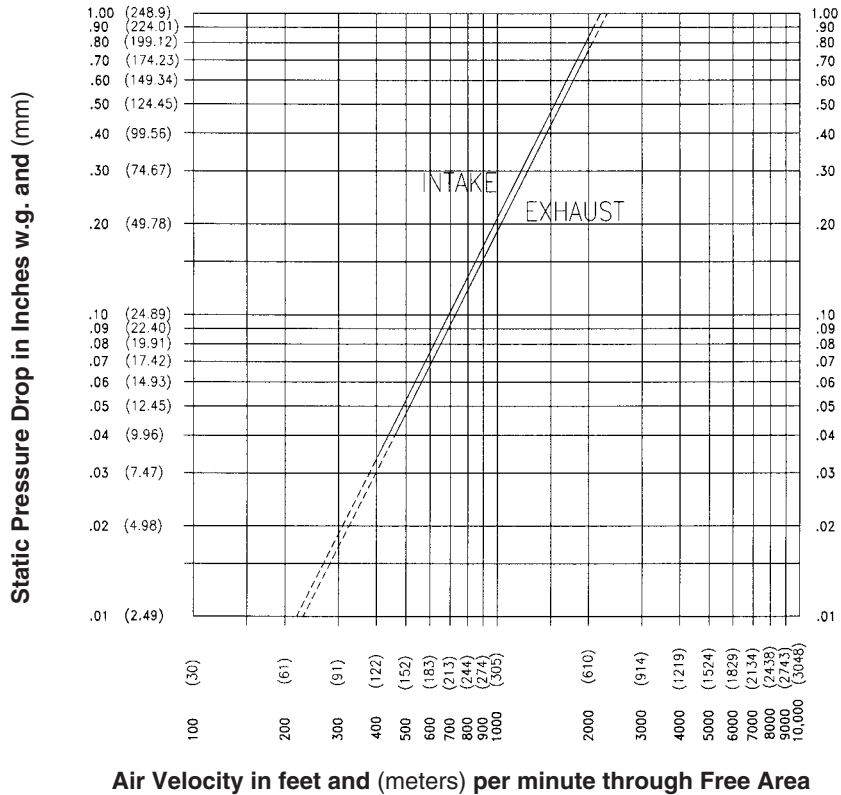
GENERAL NOTES:

1. Reference separate Installation Instruction sheets for installation details.
2. On special orders, Reliable may provide submittal and/or shop drawings. Reference these drawings for additional installation information.
3. Louvers may be provided with hidden vertical blade supports (HVBS) that increase overall installation depth by several inches. Consult Reliable Louver Engineering for exact HVBS depth.
4. Louvers wider than the maximum single section width will be shipped in multiple sections and will require field assembly.



1. SPLICE DETAIL PLAN

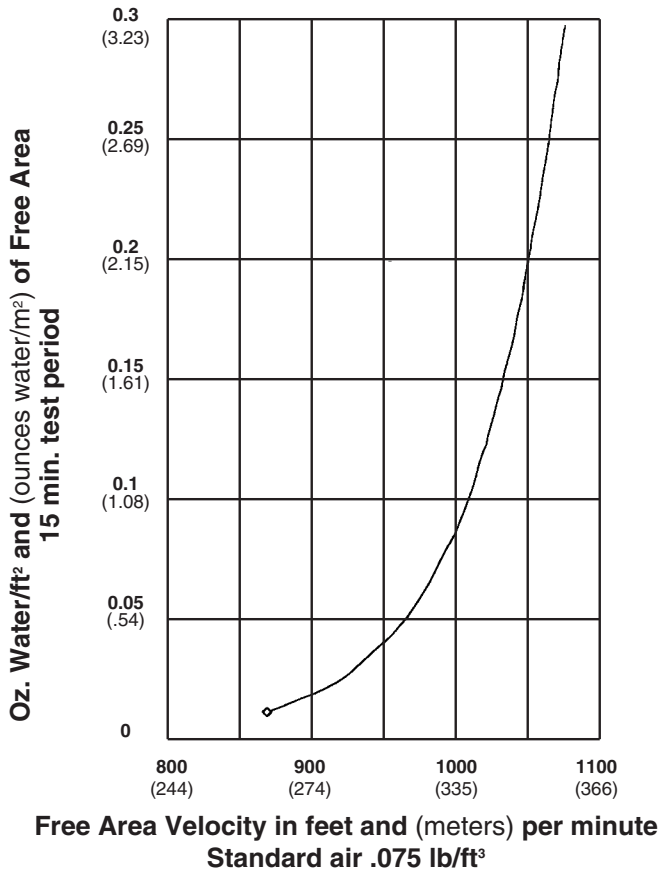
PRESSURE DROP



WATER PENETRATION GRAPH

Test size 48" wide x 48" high (1219 x 1219)

Beginning point of water penetration at .01 oz./sq. ft. is 873 fpm (266 m/min).



Ratings do not include the effect of a bird screen.



Reliable Products certifies that the 4375DFL Louvers shown herein are licensed to bear the AMCA Seal. The ratings shown are based on tests and procedures performed in accordance with AMCA Publication 511 and comply with the requirements of the AMCA Certified Ratings Program. The AMCA Certified Ratings Seal applies to air performance ratings and water penetration ratings only.

SUGGESTED SPECIFICATION

GENERAL

Furnish and install at locations shown on the plans or as described in schedules drainable stationary louver meeting the performance criteria established by the Florida Building Code. Stationary louvers shall be certified ASTM E330-02 and Florida standard TAS 202 (Uniform Static Air Pressure) tests. Stationary louvers shall be manufactured in an ISO 9001 certified factory.

Stationary louvers shall be furnished with bird and/or insect screens, supports and finishes as specified and as required for a complete installation. Stationary louvers shall incorporate drainable stationary blades. All blades and frames shall be constructed of 6063-T5 aluminum alloy.

MATERIAL

Stationary louvers shall be 4" (102) deep. Louver blades and frames shall be .081" (2.1) nominal wall thickness. Integral gutters shall be incorporated into blades, louver head and jamb frames.

PERFORMANCE

The louver shall be AMCA certified for Water Penetration and Air Performance conforming to the following minimum requirements:

Free Area: 8.58 Square Feet (0.80 m²)

Maximum pressure drop at 1000 fpm (305 m/min): 0.20" w.g. (0.05 kPa)

Free Area Velocity at Beginning Point of Water Penetration: 873 fpm (266 m/min)

STRUCTURAL DESIGN

Integral structural supports shall be designed and furnished by the louver manufacturer to carry a wind load of not less than 50 psf (2.4 kPa).

FINISH

Stationary louvers shall be finished as specified by the architect. Painted finishes shall include the following minimum requirements. All Kynar finishes shall be applied at 1.2 mil total dry film thickness and meet the following AAMA standards. 70% Kynar finishes shall meet AAMA 2605-05 for organic coatings and exterior aluminum finishes requiring 10 years of South Florida exposure. 50% Kynar finishes shall meet AAMA 2604-05 for organic coatings and exterior aluminum finishes requiring 5 years of South Florida exposure.

Louver manufacturer shall provide 20 year limited warranty for fluo-ropolymer-based finishes. 10-year warranties shall not be acceptable. Finish coating shall not peel, blister, chip, crack or check. Chalking and fading of finish shall not exceed the maximum limits identified in the manufacturers finish warranty.

This warranty shall begin on the date of material shipment.

Stationary Louver shall be Reliable model 4375DFL.

FREE AREA GUIDE

Free Area Guide shows free area in ft² and m² for various sizes of 4375DFL.
Width – Inches and Meters

| Height – Inches and Meters | 12 | 18 | 24 | 30 | 36 | 42 | 48 | 54 | 60 | 66 | 72 | 78 | 84 | 90 | 96 | 102 | 108 | 114 | 120 |
|----------------------------|------|------|------|-------|-------|-------|-------|-------|-------|-------|-------|-------|-------|-------|-------|-------|-------|-------|-------|
| | 0.30 | 0.46 | 0.61 | 0.76 | 0.91 | 1.07 | 1.22 | 1.37 | 1.52 | 1.68 | 1.83 | 1.98 | 2.13 | 2.29 | 2.44 | 2.59 | 2.74 | 2.90 | 3.05 |
| 12 | 0.26 | 0.41 | 0.56 | 0.71 | 0.87 | 1.02 | 1.17 | 1.33 | 1.48 | 1.63 | 1.79 | 1.94 | 2.09 | 2.24 | 2.40 | 2.55 | 2.70 | 2.86 | 3.01 |
| 0.30 | 0.02 | 0.04 | 0.05 | 0.07 | 0.08 | 0.09 | 0.11 | 0.12 | 0.14 | 0.15 | 0.17 | 0.18 | 0.19 | 0.21 | 0.22 | 0.24 | 0.25 | 0.27 | 0.28 |
| 18 | 0.61 | 0.97 | 1.33 | 1.70 | 2.06 | 2.43 | 2.79 | 3.15 | 3.52 | 3.88 | 4.25 | 4.61 | 4.97 | 5.34 | 5.70 | 6.06 | 6.43 | 6.79 | 7.16 |
| 0.46 | 0.06 | 0.09 | 0.12 | 0.16 | 0.19 | 0.23 | 0.26 | 0.29 | 0.33 | 0.36 | 0.39 | 0.43 | 0.46 | 0.50 | 0.53 | 0.56 | 0.60 | 0.63 | 0.67 |
| 24 | 0.87 | 1.40 | 1.92 | 2.45 | 2.97 | 3.50 | 4.02 | 4.55 | 5.07 | 5.60 | 6.12 | 6.65 | 7.17 | 7.70 | 8.22 | 8.75 | 9.27 | 9.80 | 10.32 |
| 0.61 | 0.08 | 0.13 | 0.18 | 0.23 | 0.28 | 0.33 | 0.37 | 0.42 | 0.47 | 0.52 | 0.57 | 0.62 | 0.67 | 0.72 | 0.76 | 0.81 | 0.86 | 0.91 | 0.96 |
| 30 | 1.14 | 1.83 | 2.51 | 3.20 | 3.89 | 4.57 | 5.26 | 5.94 | 6.63 | 7.32 | 8.00 | 8.69 | 9.37 | 10.06 | 10.74 | 11.43 | 12.12 | 12.80 | 13.49 |
| 0.76 | 0.11 | 0.17 | 0.23 | 0.30 | 0.36 | 0.42 | 0.49 | 0.55 | 0.62 | 0.68 | 0.74 | 0.81 | 0.87 | 0.93 | 1.00 | 1.06 | 1.13 | 1.19 | 1.25 |
| 36 | 1.33 | 2.13 | 2.92 | 3.72 | 4.52 | 5.31 | 6.11 | 6.91 | 7.70 | 8.50 | 9.30 | 10.09 | 10.89 | 11.69 | 12.49 | 13.28 | 14.08 | 14.88 | 15.67 |
| 0.91 | 0.12 | 0.20 | 0.27 | 0.35 | 0.42 | 0.49 | 0.57 | 0.64 | 0.72 | 0.79 | 0.86 | 0.94 | 1.01 | 1.09 | 1.16 | 1.23 | 1.31 | 1.38 | 1.46 |
| 42 | 1.60 | 2.55 | 3.51 | 4.47 | 5.43 | 6.39 | 7.34 | 8.30 | 9.26 | 10.22 | 11.18 | 12.13 | 13.09 | 14.05 | 15.01 | 15.96 | 16.92 | 17.88 | 18.84 |
| 1.07 | 0.15 | 0.24 | 0.33 | 0.42 | 0.50 | 0.59 | 0.68 | 0.77 | 0.86 | 0.95 | 1.04 | 1.13 | 1.22 | 1.31 | 1.39 | 1.48 | 1.57 | 1.66 | 1.75 |
| 48 | 1.86 | 2.98 | 4.10 | 5.22 | 6.34 | 7.46 | 8.58 | 9.70 | 10.82 | 11.93 | 13.05 | 14.17 | 15.29 | 16.41 | 17.53 | 18.65 | 19.77 | 20.89 | 22.00 |
| 1.22 | 0.17 | 0.28 | 0.38 | 0.49 | 0.59 | 0.69 | 0.80 | 0.90 | 1.01 | 1.11 | 1.21 | 1.32 | 1.42 | 1.52 | 1.63 | 1.73 | 1.84 | 1.94 | 2.04 |
| 54 | 2.13 | 3.41 | 4.69 | 5.97 | 7.25 | 8.53 | 9.81 | 11.09 | 12.37 | 13.65 | 14.93 | 16.21 | 17.49 | 18.77 | 20.05 | 21.33 | 22.61 | 23.89 | 25.17 |
| 1.37 | 0.20 | 0.32 | 0.44 | 0.55 | 0.67 | 0.79 | 0.91 | 1.03 | 1.15 | 1.27 | 1.39 | 1.51 | 1.63 | 1.74 | 1.86 | 1.98 | 2.10 | 2.22 | 2.34 |
| 60 | 2.40 | 3.84 | 5.28 | 6.72 | 8.16 | 9.61 | 11.05 | 12.49 | 13.93 | 15.37 | 16.81 | 18.25 | 19.69 | 21.13 | 22.57 | 24.01 | 25.45 | 26.90 | 28.34 |
| 1.52 | 0.22 | 0.36 | 0.49 | 0.62 | 0.76 | 0.89 | 1.03 | 1.16 | 1.29 | 1.43 | 1.56 | 1.70 | 1.83 | 1.96 | 2.10 | 2.23 | 2.37 | 2.50 | 2.63 |
| 66 | 2.59 | 4.14 | 5.69 | 7.24 | 8.79 | 10.35 | 11.90 | 13.45 | 15.00 | 16.55 | 18.11 | 19.66 | 21.21 | 22.76 | 24.31 | 25.86 | 27.42 | 28.97 | 30.52 |
| 1.68 | 0.24 | 0.38 | 0.53 | 0.67 | 0.82 | 0.96 | 1.11 | 1.25 | 1.39 | 1.54 | 1.68 | 1.83 | 1.97 | 2.12 | 2.26 | 2.40 | 2.55 | 2.69 | 2.84 |
| 72 | 2.85 | 4.57 | 6.28 | 7.99 | 9.71 | 11.42 | 13.13 | 14.84 | 16.56 | 18.27 | 19.98 | 21.70 | 23.41 | 25.12 | 26.83 | 28.55 | 30.26 | 31.97 | 33.69 |
| 1.83 | 0.26 | 0.42 | 0.58 | 0.74 | 0.90 | 1.06 | 1.22 | 1.38 | 1.54 | 1.70 | 1.86 | 2.02 | 2.18 | 2.33 | 2.49 | 2.65 | 2.81 | 2.97 | 3.13 |
| 78 | 3.12 | 5.00 | 6.87 | 8.74 | 10.62 | 12.49 | 14.37 | 16.24 | 18.11 | 19.99 | 21.86 | 23.74 | 25.61 | 27.48 | 29.36 | 31.23 | 33.10 | 34.98 | 36.85 |
| 1.98 | 0.29 | 0.46 | 0.64 | 0.81 | 0.99 | 1.16 | 1.34 | 1.51 | 1.68 | 1.86 | 2.03 | 2.21 | 2.38 | 2.55 | 2.73 | 2.90 | 3.08 | 3.25 | 3.42 |
| 84 | 3.39 | 5.43 | 7.46 | 9.50 | 11.53 | 13.57 | 15.60 | 17.63 | 19.67 | 21.70 | 23.74 | 25.77 | 27.81 | 29.84 | 31.88 | 33.91 | 35.95 | 37.98 | 40.02 |
| 2.13 | 0.32 | 0.50 | 0.69 | 0.88 | 1.07 | 1.26 | 1.45 | 1.64 | 1.83 | 2.02 | 2.21 | 2.39 | 2.58 | 2.77 | 2.96 | 3.15 | 3.34 | 3.53 | 3.72 |
| 90 | 3.66 | 5.86 | 8.05 | 10.25 | 12.44 | 14.64 | 16.83 | 19.03 | 21.23 | 23.42 | 25.62 | 27.81 | 30.01 | 32.20 | 34.40 | 36.60 | 38.79 | 40.99 | 43.18 |
| 2.29 | 0.34 | 0.54 | 0.75 | 0.95 | 1.16 | 1.36 | 1.56 | 1.77 | 1.97 | 2.18 | 2.38 | 2.58 | 2.79 | 2.99 | 3.20 | 3.40 | 3.60 | 3.81 | 4.01 |