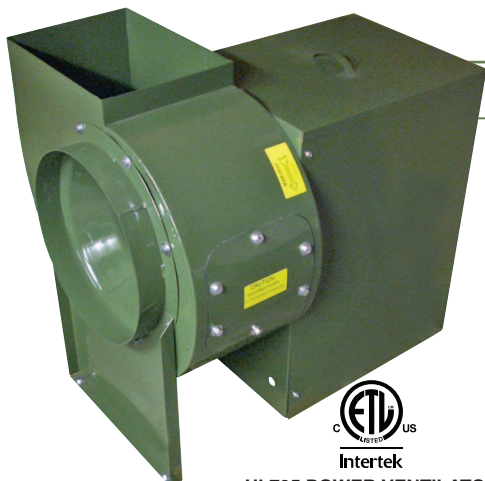


BI-RM SERIES

Belt Drive Utility Blowers



UL705 POWER VENTILATOR
FOR RESTAURANT
EXHAUST APPLIANCES

BI-RM/BI-RM-HS SERIES



MOTOR AND DRIVE COMPARTMENT WITH COVER REMOVED TO ILLUSTRATE 3 SIDE MOTOR ACCESS AND SLOPED MOTOR BASE FOR BELT TENSIONING.

FEATURES - BI-RM SERIES

- Complete range of sizes from 10" to 36".
- Full AMCA Class 1 Operation.
- Non-overloading backward inclined (BI) welded wheels.
- Aluminum wheel - (AMCA type B classification for spark resistant construction) - available as an option.
- Aluminum wheels only on BI-RM-30 to BI-RM-36.
- Discharge position can be field rotated to any of 8 discharge positions.
- Counter clock wise rotation is standard. Clock wise available.
- Outlet flanges on models BI-24 to BI-36.
- Temperature Ratings - without a heat slinger 250° F with a heat slinger, steel wheel 400° F, aluminum wheel 300° F.
- Motor access from 3 sides.
- Sloped motor base for ease of motor installation.
- Vented motor and drive compartment cover, with handles, for safety & weather protection.
- 16 gauge or heavier blower housing.
- Heavy duty pillow block ball bearings.
- UL 705 Supplement SC - Power Ventilator for Restaurant Exhaust Appliances Listed for removal of cooking vapours.
- Meets NFPA 96 guidelines.
- Upblast discharge directs exhaust away from roof.
- Integral handles for single person removal of motor and drive compartment cover.
- Continuously welded 16 gauge or heavier blower housing.
- Bolted clean out door.
- 2" drain for easy removal of cleaning solutions.
- Complete range of sizes from 10" to 36".
- Vinyl shaft seal.



AVAILABLE WITH MOTORS & DRIVES FACTORY INSTALLED. CONSULT OUR DELAIR FAN SELECTION SOFTWARE FOR DETAILS.

TYPICAL MAXIMUM CFM @ SP

MODEL	1" SP	2" SP	3" SP	4" SP	5" SP	Min HP	Max HP
BI-RM-10	2300	2050	1700	1500	1300	1/2	2
BI-RM-12*	3200	2950	2675	2350	1925	1/2	3
BI-RM-13	3900	3625	3400	2975	2450	1/2	5
BI-RM-15*	4775	4450	4075	3650	3000	1/2	5
BI-RM-16	5700	5350	4900	4300	3500	3/4	7 1/2
BI-RM-18	6175	5600	4925	3900	-	3/4	7 1/2
BI-RM-20	8400	7775	7050	6200	4650	1	7 1/2
BI-RM-22*	10000	9550	8700	7600	5550	1	10
BI-RM-24	11100	10100	8800	6600	-	1 1/2	15
BI-RM-27	15250	14050	12750	11150	8250	1 1/2	15
BI-RM-30-AW	18000	17000	16000	14000	11750	2	15
BI-RM-33-AW	22500	21000	19000	17000	14000	-	20
BI-RM-36-AW	27000	25000	23000	20000	16000	3	25

Power rating (BHP) does not include transmission losses. Performance certified is for installation type B: Free inlet, Ducted outlet. Performance ratings do not include the effect of appurtenances (accessories).

CFM values listed above are summarized for convenience.

FOR FAN CURVES & FULL PERFORMANCE DATA, CONSULT OUR DELAIR SOFTWARE. DOWNLOAD DELAIR @ WWW.CANARM.COM/DELAIR

*SPECIAL ORDER

BI-RM-HS SERIES

Belt Drive Utility Blowers with Heat Slinger for Smoke & Heat

The smoke and heat model of the BI & BI-RM series is suitable for use in clean, dry air with a maximum ambient temperature of 204°C (400°F).

They are designed to exhaust smoke in the event of a fire. It is in compliance with smoke control systems requirements of 500°F for 4 hours and 1000°F for 15 minutes.

FEATURES - BI-RM-HS SERIES

- Sizes from 10" to 24".
- Non-overloading backward inclined (BI) welded steel wheels only.
- Counter clockwise rotation is standard.
- Outlet flanges on model BI-24.
- Heat slinger with vinyl shaft seal.
- Upblast discharge directs exhaust away from roof.



Canarm certifies that the BI-RM Series shown herein are licensed to bear the AMCA Seal. The ratings shown are based on tests and procedures performed in accordance with AMCA Publication 211 and comply with the requirements of the AMCA Certified Ratings Programme.

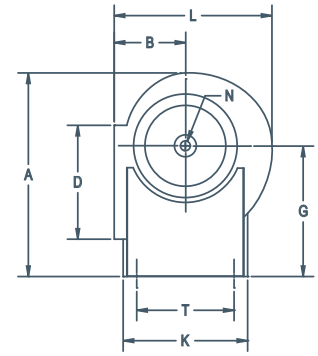
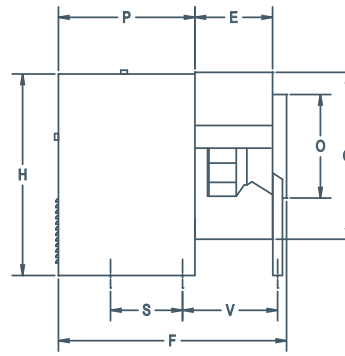
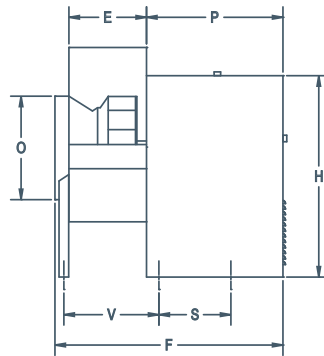
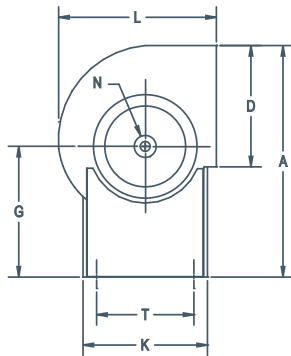


UL705 Supplement SC - Power Ventilator for Restaurant Exhaust Appliances certified, refer to our UL705 Supplement SC - Power Ventilator for Restaurant Exhaust Appliances Catalogue page C in *Roof Mount Ventilation* for all installation requirements

BI & BI-RM SERIES

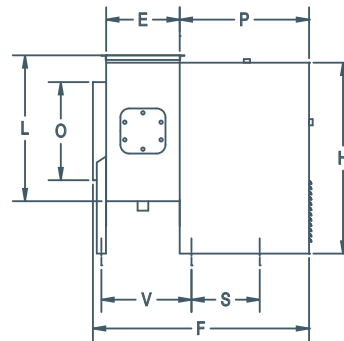
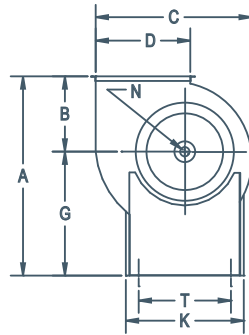
Belt Drive Utility Blowers

DIMENSIONS



MODELS BI-10 TO BI-27
(STANDARD TOP HORIZONTAL DISCHARGE)

MODELS BI-30 TO BI-36
(STANDARD BOTTOM HORIZONTAL DISCHARGE)



MODELS BI-RM(-HS)-10 TO BI-RM(-HS)-24
(UL 762 LISTED FOR REMOVAL OF COOKING VAPOURS)

MODEL	OUTLET																	SHAFT DIA.	INLET		WEIGHT (lbs) without motors
	A (STANDARD MODELS)	A (BI-RM MODELS)	B	C	D	E	F	G	H	K (CABINET WIDTH)	L	N	O	P	S	T	V				
BI-10	26 3/4"	23 5/8"	8 3/8"	19 3/16"	11 5/16"	8 1/4"	27 3/4" No Leg	15 5/6"	21 5/16"	13 1/4"	17 1/2"	3/4"	11"	17 1/4"	11 5/8"	11 1/4"	-	78			
BI-12	33 3/16"	30 3/16"	9 15/16"	27 7/16"	13 1/16"	9 7/8"	33 5/16"	20 3/16"	29 1/8"	16 3/4"	20 9/16"	1"	12 7/16"	21 3/16"	11 1/2"	14 3/4"	13 1/16"	112			
BI-13	34 1/2"	30 15/16"	10 3/4"	24 1/2"	14 3/8"	10 3/4"	34 1/4"	20 3/16"	29 1/8"	16 3/4"	22 7/16"	1"	14 3/8"	21 1/4"	11 1/2"	14 3/4"	14"	134			
BI-15	35 15/16"	31 15/16"	11 3/4"	27 1/4"	15 13/16"	12 3/4"	36 1/4"	20 3/16"	29 1/8"	16 3/4"	24 7/8"	1"	15 7/8"	21 3/16"	11 1/2"	14 3/4"	16"	140			
BI-16	39 7/16"	34 11/16"	12 11/16"	29 15/16"	17 1/2"	13 1/8"	36 5/8"	22"	30 15/16"	16 3/4"	26 15/16"	1 3/16"	17 3/8"	21 1/4"	11 1/2"	14 3/4"	16 1/2"	162			
BI-18	41 5/16"	35 7/8"	13 13/16"	33 3/16"	19 3/8"	14 1/2"	38 1/4"	22"	30 15/16"	16 3/4"	29 9/16"	1 3/16"	19 3/8"	21 1/2"	11 1/2"	14 3/4"	17 7/8"	172			
BI-20	49 3/16"	42 15/16"	14 15/16"	36 7/16"	21 3/16"	15 3/4"	46 3/8"	28"	40 15/16"	25 1/8"	32 3/16"	1 3/16"	21 1/4"	27 5/8"	14 9/16"	22 3/4"	19 3/4"	289			
BI-22	51 9/16"	44 3/8"	16 3/8"	40 7/16"	23 9/16"	17 3/4"	48 7/16"	28"	40 15/16"	25 1/8"	35 9/16"	1 3/16"	23 5/8"	27 5/8"	14 9/16"	22 3/4"	21 13/16"	322			
BI-24	58 3/16"	49 15/16"	17 15/16"	44 11/16"	26 1/8"	19 3/8"	51 5/16"	32 1/8"	46 11/16"	28 15/16"	39 1/8"	1 7/16"	26"	28 15/16"	18 5/16"	26 3/8"	23 3/8"	385			
BI-27	60 11/16"	51 1/2"	19 1/2"	49"	28 11/16"	21 1/4"	53 1/8"	32 1/8"	46 11/16"	28 15/16"	42 13/16"	1 7/16"	28 5/8"	28 7/8"	18 5/16"	26 3/8"	25 1/4"	411			
BI-30	65 15/16"	68 3/16"	24 7/8"	54 1/2"	31 7/8"	23 5/8"	58 5/8"	43 5/16"	65 5/16"	44 5/16"	50 15/16"	1 11/16"	31 3/4"	32"	17"	40"	29"	517			
BI-33	68 3/16"	68 5/8"	25 3/8"	58 15/16"	34 7/8"	25 15/16"	60 15/16"	43 5/16"	65 5/16"	44 5/16"	53 7/8"	1 11/16"	35"	32"	17"	40"	31 5/16"	607			
BI-36	70 7/8"	69"	25 1/2"	66 3/16"	38 9/16"	28 11/16"	63 11/16"	43 5/16"	65 5/16"	44 5/16"	56 15/16"	1 15/16"	38 3/4"	32"	17"	40"	34 1/16"	747			

ACCESSORIES

- V-Cap
- Bolted Clean Out Door
- Heat Slinger
- Vibration Isolators

- Shaft Seal
- Corrosion Resistant Coating
- Aluminum Wheel
- Back Draft Dampers

- Inlet & Outlet Screens
- 2" Drain Fitting

For more information on accessories, see page C14.