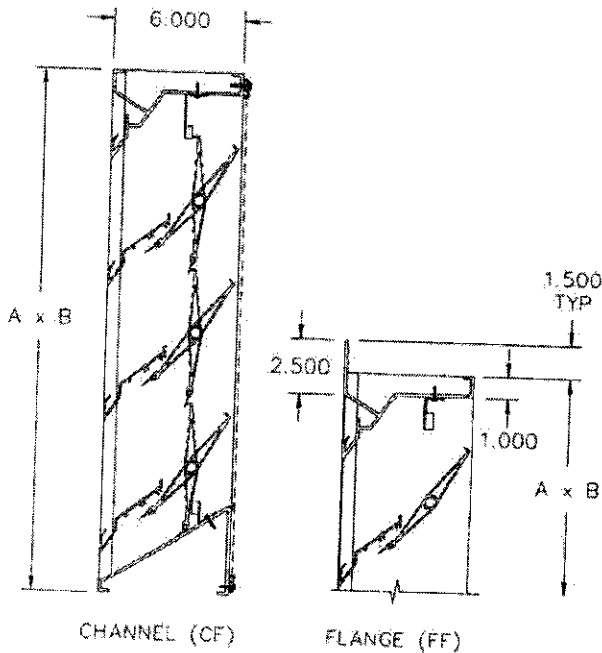
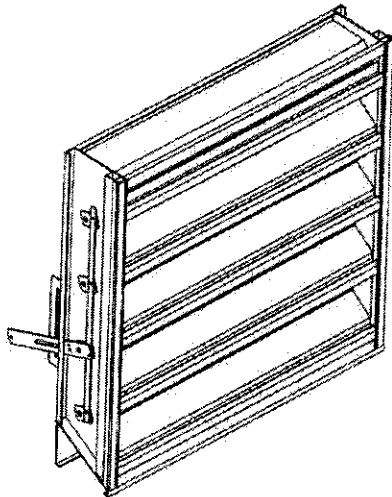


LCA6D38X



STANDARD CONSTRUCTION

- 6" DEEP .125" THICK EXTRUDED ALUMINUM FRAME, 6063-T5 ALLOY.
- .091" THICK ALUMINUM FRONT STATIONARY DRAINABLE BLADES POSITIONED AT 37 1/2° ANGLE AND SPACED APPROXIMATELY 6.175" CENTER TO CENTER, .140 THICK ADJUSTABLE REAR AIR FOIL BLADES
- EXTRUDED VINYL BLADE EDGE SEALS ON REAR ADJUSTABLE BLADES AND FLEXIBLE, COMPRESSIBLE ALUMINUM JAMB SEALS.
- STAINLESS STEEL BEARINGS, SLEEVE PRESSED INTO FRAME.
- .625 x .040" EXPANDED, FLATTENED ALUMINUM BIRD SCREEN IN REMOVABLE FRAME (WBS-1).

MODEL SIZES

- MINIMUM SIZE: 12" x 12"
- MAXIMUM FACTORY SHIP SIZE: 120" x 96"
- MINIMUM SINGLE SECTION WIDTH: 60"

NOTE: LOUVERS LARGER THAN THE MAXIMUM SINGLE SECTION SIZE WILL REQUIRE FIELD ASSEMBLY OF SMALLER SECTIONS.

PRODUCT FEATURES

- 47% FREE AREA.
- PUBLISHED PERFORMANCE RATINGS BASED ON TESTING IN ACCORDANCE WITH AMCA PUBLICATION 511.
- HIGH FREE AREA, LOW WATER PENETRATION, AND LOW PRESSURE DROP.
- ALL ALUMINUM CONSTRUCTION FOR HIGH RESISTANCE TO CORROSION.
- OUTSTANDING DURABILITY AND LOW MAINTENANCE.

MODEL OPTIONS

- EXTENDED SILL
- 2.500" .125" THICK FLANGE FRAMES
- BIRD/INSECT SCREENS (REFERENCE SCREEN SUBMITTAL)

FINISHES

- PRIME COAT
- BAKED ENAMEL (MODIFIED FLOUROPOLYMER)
- KYNAR
- CLEAR ANODIZE
- COLOR ANODIZE (SOME VARIATION IN ANODIZE COLOR CONSISTENCY IS POSSIBLE)

TAG	QTY	ACTUAL SIZE		FRAME
		WIDTH (A)	HEIGHT (B)	

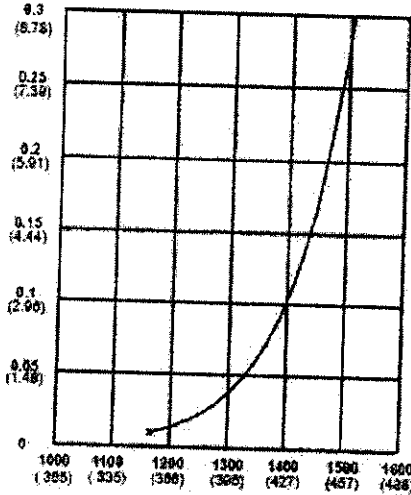
PROJECT:	LOCATION:
ARCH./ENGR.:	CONTRACTOR:
REPRESENTATIVE:	DATE:

ALL STATED SPECIFICATIONS ARE SUBJECT TO CHANGE WITH OUT NOTICE OR OBLIGATION.

COMBINATION LOUVERS

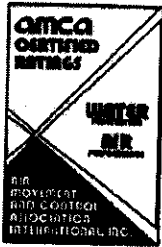
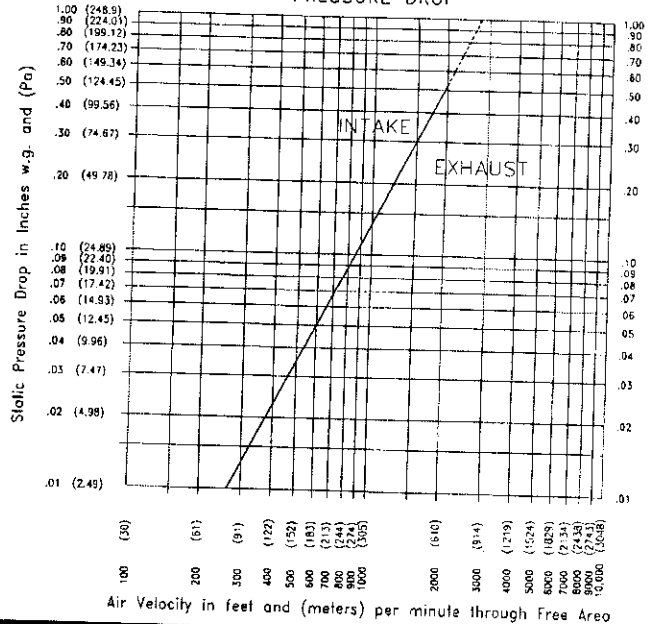
OZ. WATER/(ML WATER/M²) OF FREE AREA
15 MINUTE TEST PERIOD

WATER PENETRATION
BEGINNING POINT OF WATER PENETRATION AT .01 OZ./SQ. FT.
IS 1169 FPM (356 M/MIN.)



FREE AREA VELOCITY IN FEET (METERS) PER MINUTE STANDARD
AIR .075 LB/FT (1.2 KG/M) (48" x 48" TEST SIZE)

PRESSURE DROP



Airline Louvers certifies that the LCA6D38X louver shown herein are licensed to bear the AMCA Seal. The Ratings shown are based on tests and procedures performed in accordance with AMCA Publication 511 and comply with the requirements of the AMCA Certified Ratings Program. The AMCA Certified Ratings Seal applies to air performance ratings and water penetration ratings only.

FREE AREA GUIDE
FREE AREA GUIDE SHOWS FREE AREA IN FT² AND M² FOR VARIOUS SIZES OF LCA6D38X,
WIDTH - INCHES AND METERS

HEIGHT - INCHES AND METERS

	0.48	0.77	1.06	1.35	1.64	1.93	2.21	2.50	2.79	2.94	3.23	3.51	3.80	4.09	4.38	4.67	4.96	5.25	5.54
0.04	0.07	0.10	0.13	0.15	0.18	0.21	0.23	0.26	0.27	0.30	0.33	0.35	0.38	0.41	0.43	0.46	0.49	0.52	
0.06	0.10	0.14	0.18	0.22	0.26	0.30	0.33	0.37	0.39	0.43	0.47	0.51	0.55	0.59	0.62	0.66	0.70	0.74	
0.09	0.14	0.19	0.24	0.29	0.34	0.40	0.45	0.50	0.52	0.58	0.63	0.68	0.73	0.78	0.83	0.89	0.94	0.99	
0.11	0.17	0.24	0.30	0.37	0.43	0.50	0.56	0.62	0.66	0.72	0.79	0.85	0.92	0.98	1.05	1.11	1.17	1.24	
0.13	0.21	0.28	0.36	0.44	0.52	0.60	0.67	0.75	0.79	0.87	0.94	1.02	1.10	1.18	1.26	1.33	1.41	1.49	
0.15	0.24	0.33	0.42	0.51	0.60	0.70	0.79	0.88	0.92	1.01	1.10	1.19	1.29	1.38	1.47	1.56	1.65	1.74	
0.17	0.28	0.38	0.48	0.59	0.69	0.80	0.90	1.00	1.05	1.16	1.26	1.37	1.47	1.57	1.68	1.78	1.88	1.99	
0.19	0.31	0.43	0.54	0.66	0.78	0.90	1.01	1.13	1.19	1.30	1.42	1.54	1.65	1.77	1.89	2.00	2.12	2.24	
0.22	0.35	0.48	0.61	0.74	0.87	0.99	1.12	1.25	1.32	1.45	1.58	1.71	1.84	1.97	2.10	2.23	2.36	2.49	
0.24	0.38	0.52	0.67	0.81	0.95	1.09	1.24	1.38	1.45	1.59	1.74	1.88	2.02	2.17	2.31	2.45	2.59	2.74	
0.26	0.42	0.57	0.73	0.88	1.04	1.20	1.35	1.51	1.58	1.74	1.90	2.05	2.21	2.36	2.52	2.68	2.83	2.99	
0.28	0.45	0.62	0.79	0.96	1.13	1.29	1.46	1.63	1.72	1.89	2.05	2.22	2.39	2.56	2.73	2.90	3.07	3.24	
0.30	0.49	0.67	0.85	1.03	1.21	1.39	1.58	1.76	1.85	2.03	2.21	2.39	2.58	2.76	2.94	3.12	3.30	3.49	
0.32	0.52	0.71	0.91	1.10	1.30	1.49	1.69	1.88	1.98	2.18	2.37	2.57	2.76	2.96	3.15	3.35	3.54	3.74	

ALL STATED SPECIFICATIONS ARE SUBJECT TO CHANGE WITH OUT NOTICE OR OBLIGATION.

AIR LEAKAGE WITH DAMPER SECTION CLOSED

