

PH8 (Phantom 8) Series

Unheated

Model Lengths: 36"–144"

Environmental Separation (up to 8')

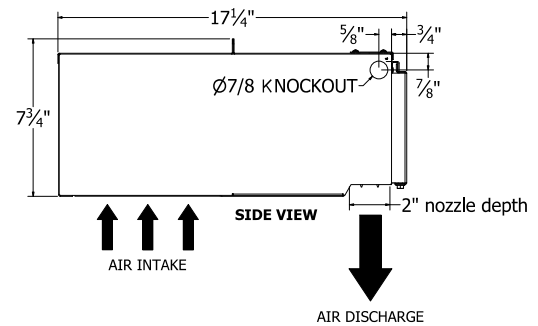
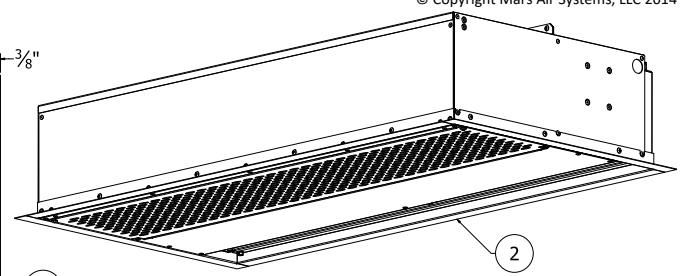
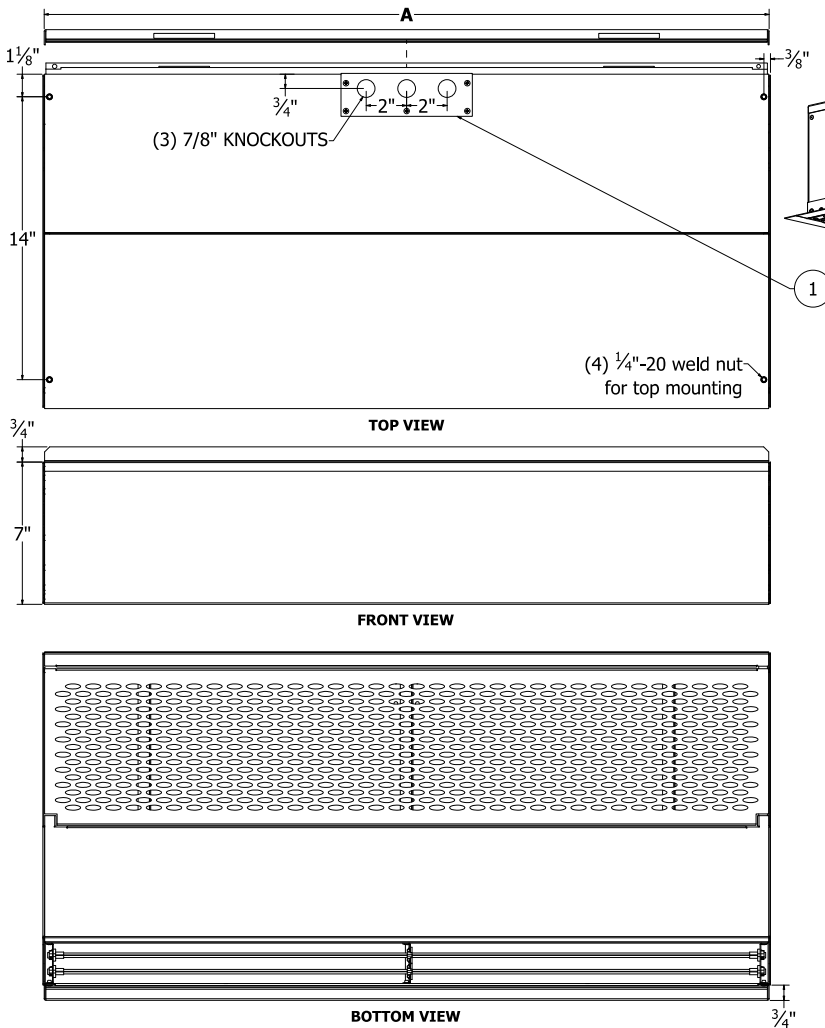
Insect Control (up to 7')



atmosphere is everything

14716 S. BROADWAY, GARDENA, CA 90248 • Ph: (310)532-1555 • Fax: (310)-532-3030 • www.marsair.com

© Copyright Mars Air Systems, LLC 2014



Notes:

1. Internal junction box (underneath removable access cover) provided for electrical wiring.
2. (4) 1" wide matching trim pieces are included and shipped loose for optional installation.
3. Recommended service clearances are 2" to the left and right sides, 2" on top, and 2" in front of the unit.
4. Circuit protection (per NEC) to be installed by others.
5. To prevent accidental damage during operation, unit must be installed so that the bottom of the air curtain does not extend below the door header.
6. Units up to 72" in width can be fastened to wall on both ends without intermediate support. Longer units are double units joined together and must be supported in the center.

Model Number	Mechanical Data					AMCA Certified Lab Data				
	Overall Length A (in)	Nozzle Length (in)	Rear Mounting Distance B (in)	Motor (hp)	Weight (lb)	Max Core Velocity at Nozzle (fpm)	Avg Velocity (fpm)	Volume (cfm)	Uniformity (%)	Power Rating (watt)
<input type="checkbox"/> PH836-1U*-AL	36	36	16	1/6	42	1957	1074	520	58	122
<input type="checkbox"/> PH842-1U*-AL	42	42	19	1/6	47	2218	1421	807	54	142
<input type="checkbox"/> PH848-1U*-AL	48	48	22	1/6	52	2438	1453	946	60	155
<input type="checkbox"/> PH860-1U*-AL	60	60	28	1/6	62	2329	1528	1250	65	181
<input type="checkbox"/> PH872-2U*-AL	72	72	34	1/6	71	2476	1638	1612	63	214
<input type="checkbox"/> PH884-2U*-AL	84	84	19	(2) 1/6	94	2218	1421	1614	54	284
<input type="checkbox"/> PH896-2U*-AL	96	96	22	(2) 1/6	104	2438	1453	1892	60	310
<input type="checkbox"/> PH8108-2U*-AL	108	108	25	(2) 1/6	114	2438	1495	2196	63	336
<input type="checkbox"/> PH8120-2U*-AL	120	120	28	(2) 1/6	124	2329	1528	2500	65	362
<input type="checkbox"/> PH8144-2U*-AL	144	144	34	(2) 1/6	143	2476	1638	3224	63	428

* – Use corresponding letters in "Electrical Data" column headers (see page 2) to complete the model numbers.

Note: above data is for 60 Hz at 1550 RPM. For 50 Hz, RPM is 1300 with a 17% reduction in performance.

- The AMCA Certified Ratings Seal applies to airflow rate, average outlet velocity, outlet velocity uniformity, velocity project, and power rating at free delivery only.

NOTE: Mars Air Systems, LLC reserves the right to change specifications and product design without notice. Such revisions do not entitle the buyer to corresponding changes, improvements, additions, or replacements for previously purchased equipment.

PH8 (Phantom 8) Series

Unheated

Model Lengths: 36"–144"

Environmental Separation (up to 8')

Insect Control (up to 7')



atmosphere is everything

14716 S. BROADWAY, GARDENA, CA 90248 • Ph: (310)532-1555 • Fax: (310)-532-3030 • www.marsair.com

© Copyright Mars Air Systems, LLC 2014

Standard Features:

- ❖ ETL-certified to conform to UL 507 (US) and CSA 22.2 (Canada) standards for indoor and outdoor use
- ❖ AMCA-certified to AMCA 211 (includes performance testing per AMCA 220)
 - Certified models are approved for use as alternate to vestibules (per ASHRAE 90.1, IECC, and IgCC)
- ❖ Sleek aluminum shell over heavy gauge steel core
- ❖ Fire retardant and rust preventative electrostatic polyurethane powder coating
 - Standard color is Pearl White (PW)
- ❖ 1/6 HP continuous duty motors (NEMA 1)
- ❖ Variable speed controller with off setting
- ❖ Factory-wired 24V control circuit
- ❖ Adjustable air directional vane with 40° sweep front to back
- ❖ Removable wall mounting bracket for easy installation
- ❖ 5-year parts warranty
- ❖ Freight included (FOB continental USA)
- ❖ Proudly made in the USA

Electrical Data Full Load Amp (FLA)	Unit Amperage (Voltage Code)	
	115V/1Ø □ (A)	208-230V/1Ø □ (D)
□ PH836-1U*-PW	2.4	1.2
□ PH842-1U*-PW	2.4	1.2
□ PH848-1U*-PW	2.4	1.2
□ PH860-1U*-PW	2.6	1.4
□ PH872-1U*-PW	2.6	1.4
□ PH884-2U*-PW	4.8	2.4
□ PH896-2U*-PW	4.8	2.4
□ PH8108-2U*-PW	5.0	2.6
□ PH8120-2U*-PW	5.2	2.8
□ PH8144-2U*-PW	5.2	2.8

* – Use corresponding letters in "Voltage Code" column headers to complete the model numbers.

Ampacity (MCA) = total FLA X 1.25

Alternate voltage codes with FLA data:

• 220V/1Ø/50Hz (U) – 0.9A per motor

Mars Recommended Accessories (see [catalog](#) for complete listing):

- ❖ [Door Limit Switches](#) (§)
 - 99-018, Commercial surface mounted magnetic switch, 24V
 - ❖ [Solid State Controllers](#) (§)
 - J0021, Commercial low voltage controller, 115V, 1Ø, adjustable time delay, with commercial plastic surface mounted door limit switch (field installed)
 - ❖ [Severe Duty and Finish](#)
 - HSG-304SS-PH, 304 Stainless steel housing construction
- (§) = Shipped loose

Sound Levels (measured at 10' in a free field):

25-36" Units = 49 dBA, 42" Unit = 50 dBA, 48" Unit = 52 dBA, 60-96" Units = 53 dBA, 108-144" Unit = 54 dBA

AMCA Certified Projection Velocity		
Model	Distance from Nozzle (in)	Average Core Velocity (fpm)
PH872-1U*	40	886
	80	668
	120	572
	160	517

EXAMPLE

PH8 72 - 1 U A - PW

Series: Phantom 8
LENGTH OF UNIT
OF MOTORS
U = UNHEATED
VOLTAGE CODE
COLOR



MARS Air Systems, LLC certifies that the Air Curtains shown on this data sheet are licensed to bear the AMCA seal. The ratings shown are based on tests and procedures performed in accordance with AMCA Publication 211 and comply with the requirements of the AMCA Certified Ratings Program.

The AMCA Certified Ratings Seal applies to airflow rate, average outlet velocity, outlet velocity uniformity, velocity projection and power rating at free delivery only.

