

FACTORY ADDRESS:

INFINAIR ARABIA CO. LTD
The Hashemite Kingdom of Jordan
Amman, Mowaqqar Industrial Zone
Free Zone, Develop Jordan

P.O. Box 20036
Amman info@infinair-arabia.com
www.infinair-arabia.com



Rooftop Centrifugal Exhaust Fan

RUC

INFINAIR ARABIA COMPANY LTD. certifies that the Rooftop Centrifugal Fans (RUC) shown herein is licensed to bear the AMCA seal. The ratings shown are based on tests and procedures performed in accordance with AMCA Publication 211 and AMCA Publication 311 and comply with the requirements of the AMCA Certified Ratings Program



INFINAIR™
INFINAIR ARABIA CO. LTD.



ABOUT US:

INFINAIR ARABIA is one of the pioneer fans & manufacturing company in MENA. It is a partner to INFINAIR Corporation, which was established in 2003. In the last two decades, INFINAIR Corporation has expanded worldwide. In 2018, INFINAIR was established a production factory in the Kingdom of Jordan, Amman – Mowaqar Industrial City, and in 2022, INFINAIR had expanded a new factory in Saudi Arabia. INFINAIR ARABIA focuses on Quality Management to develop the system, processes, and work professionalism. INFINAIR is a certified company by ISO9001, ISO14001, and ISO45001. INFINAIR ARABIA has invested in Research & Development to certify the products by AMCA, UL, ETL, SMOKE, and RoHS. Today, INFINAIR ARABIA supplies to all Middle East & North Africa Countries and participates in MENA projects.



INFINAIR ARABIA achieved SAUDI MADE Authorization & Accreditation Mark. It is contributing to Saudi Made local contents and fulfills the 2030 vision. INFINAIR ARABIA is very active in the Saudi Market and supports many projects.

INFINAIR™
شركة إنفينير العربية
INFINAIR ARABIA CO. LTD.

PRODUCTION AND FABRICATIONS



INFINAIR ARABIA supplies to many factories, hospitals, universities, malls, towers, oil & gas plants, water desalination, and several others.



INFINAIR™

RUC

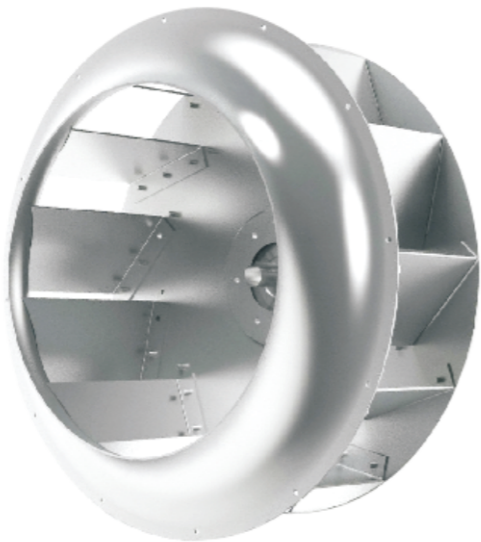
Rooftop Up-blast Centrifugal Fan

- Upblast discharge design for lower system resistance
- Automatic liquid contaminant separation and collection keeps roof clean
- High balancing grade up to G2.5 (AMCA 204)
- Isolated motor compartment with active cooling for extended service life
- High-strength aluminum construction for harsh environments

5G Wind-Surfer™ Wheel: Special for Aluminum Roof Fans

Novel design overturning the tradition	Internationally advanced process is adopted for better conformity with characteristics of the flow field
The first centrifugal wheel in China for aluminum roof fans	Flow passage components are spin formed, in replacement of the traditional process
With innovation based on advanced passage through constraint idea from abroad	The blade is formed at one time by pressing, having ensured the processing quality
Leading efficiency and noise advantage	Special machine, mould and tooling design have ensured the molding and positioning precision
Highly efficient area width, no overload	

- Wind-Surfer™ wheel comes to its fifth generation(5G)
- Continuous improvement, constant promotion
- Higher energy efficiency, lower energy waste
- Less noise, more quietness



- Whole aluminum alloy, light weight and inborn explosion-proof
- Metal texture promotes the taste
- Light weight accounting for only 1/3 of that of the traditional
- Having reached the highest explosion-proof class SPACK A

- Carefully selected materials applicable to fire-fighting and coastal occasions
- The strength is designed to be 200% of the highest rotating speed, and may fully satisfy the fire-fighting requirement
- The material is resistant to neutral salt spray, and is widely used in the coastal regions
- The rigorous experimental tests win trustworthiness

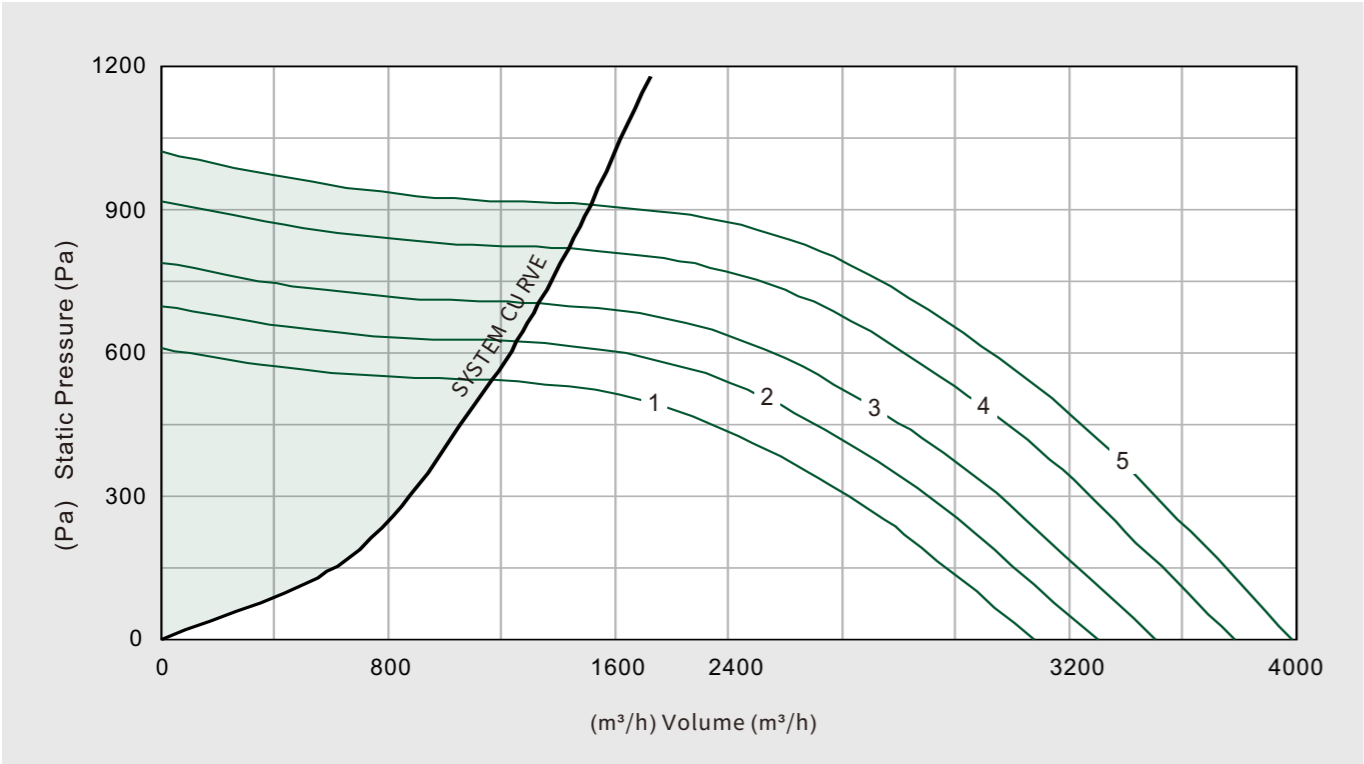
Product Feature

Structure: Upblast exhaust air, no pollution and high pressure	Centrifugal principle: reducing concentration while exhausting air
Upblast direction, quickly dilute the polluted air, environmental friendly	Impeller rotate at high speed: Centrifugalize grease or liquid contamination
Avoid pollution on the roof	Swung to the windband, flow down to the collection box
Avoid polluted air re-circulate into building	Reducing the concentration of polluted air, in order to matched environment protection requirement
Replace chimney, save investment and improve building appearance	
Isolated motor chamber: positive cooling system	Material selection: beautiful appearance and endurable
Motor/drive located in independent chamber: isolated from exhaust air	Select high quality aluminum alloy with high strength
Fresh air intake tube: cooling motor with fresh air	Light, reduce the load of the roof
Auxiliary blades suck in fresh air: active cooling	Resist wind, endurable sunlight; load of heavy snow, endurable the hostile climate
Motor/bearing life extended, maintainess/cleaning easier	Streamlining, refine artisanship
	Appearance in silvery white, match to the modern aesthetic



High pressure wheel: for high resistance system exhaust	Special Air exhaust
Static pressure up to 900Pa	●AMCA Spark A Spark Resistance Construction Type A as per AMCA 99 ●100℃ Max. 100℃ high temperature exhaust, active cooling ensured
Suitable for long/thin duct, welding, dust generating or workplace exhaust	Saturated wet air exhaust: through special drain design
	Laboratory exhaust
	Sticky air exhaust: wheel protected by non-stick coating

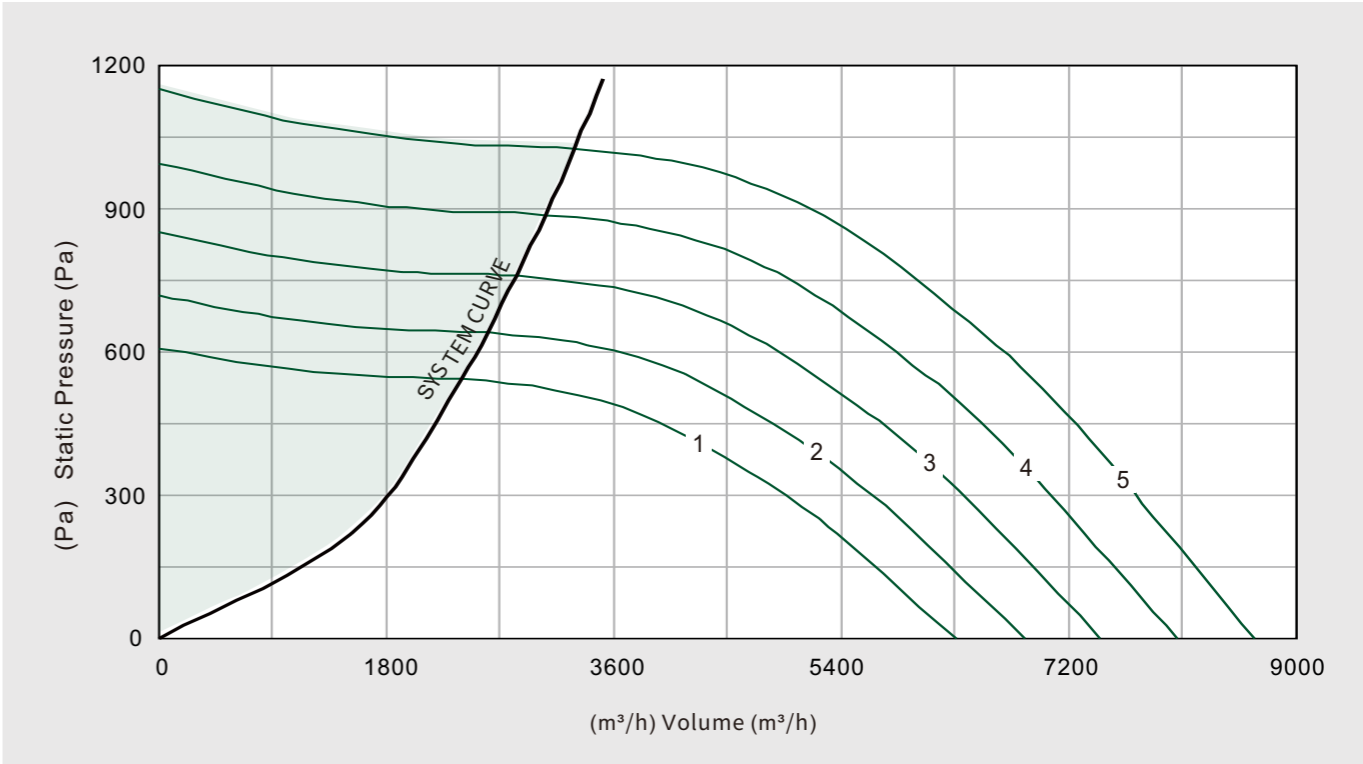
RUC-300
Model:RUC-300



RUC-300

Performance certified is for installation type A - free inlet, free outlet with partition, Performance ratings do not include the effects of appurtenances (accessories). Power rating (kW) includes transmission losses. Values shown are for inlet LwiA sound power levels for Installation Type A: Free inlet, free outlet with partition. The A-weighted sound ratings shown have been calculated per AMCA International Standard 301. dB(A) A-weighted sound pressure level is based on 11.5 dB sound attenuation at 1.5 m. Note that dB(A) levels are not licensed by AMCA International.

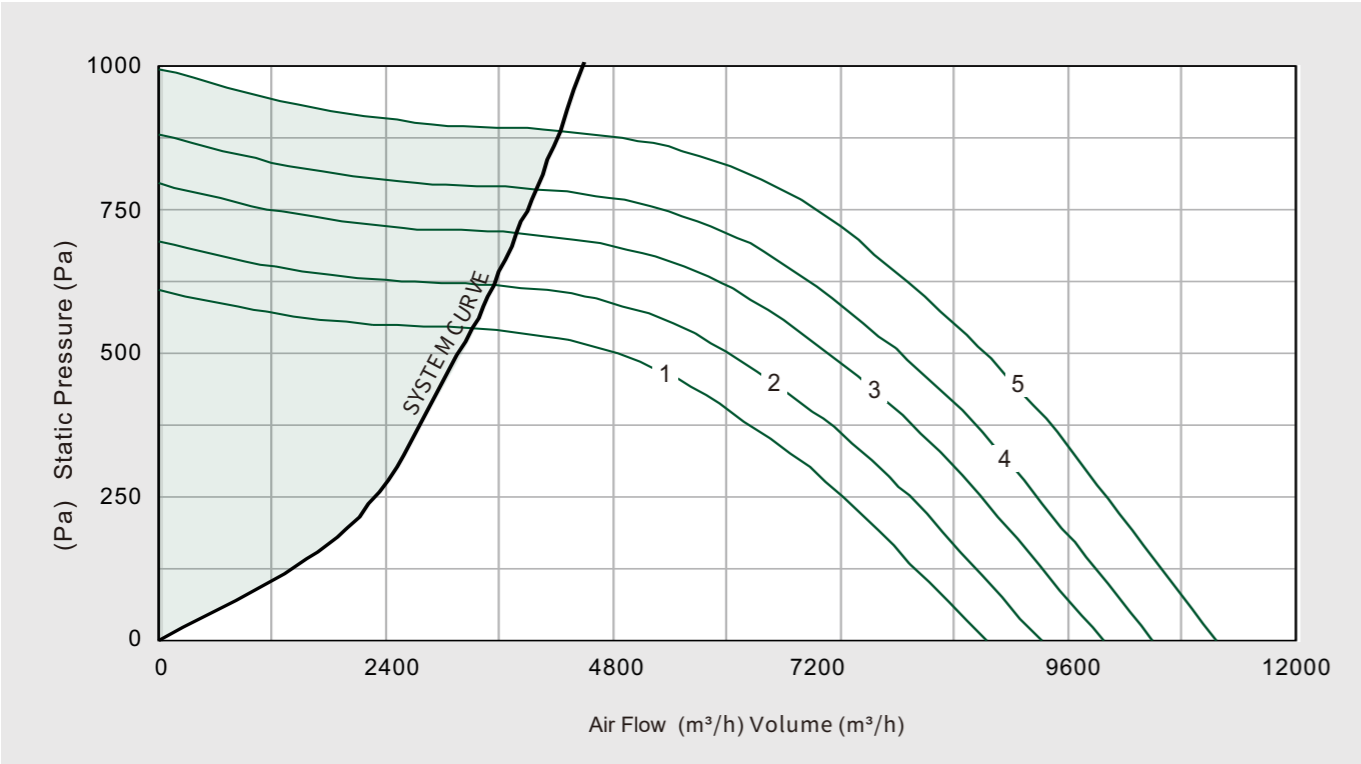
RUC-425
Model:RUC-425



RUC-425	NO.	RPM					
			Volume(m³/h)	Pst(Pa)	Power(kW)	LWiA	dB(A)
	1	1565	6309	1	1.301	86	75
			5225	251	1.359	83	72
			3832	469	1.377	80	69
			2395	543	1.164	80	69
	2	1700	6853	1	1.668	88	77
			5676	296	1.742	85	74
			4163	553	1.765	82	71
			2602	640	1.492	82	71
	3	1850	7458	1	2.150	91	79
			6177	351	2.244	88	77
			4530	655	2.275	85	74
			2831	758	1.923	85	73
	4	2000	8062	2	2.716	93	81
			6678	410	2.836	90	79
			4898	766	2.874	87	76
			3061	886	2.430	87	75
	5	2150	8667	2	3.374	95	83
			7179	473	3.523	92	80
			5265	885	3.571	89	77
			3291	1024	3.019	89	77

Performance certified is for installation type A - free inlet, free outlet with partition, Performance ratings do not include the effects of appurtenances (accessories). Power rating (kW) includes transmission losses. Values shown are for inlet LwiA sound power levels for Installation Type A: Free inlet, free outlet with partition. The A-weighted sound ratings shown have been calculated per AMCA International Standard 301. dB(A) A-weighted sound pressure level is based on 11.5 dB sound attenuation at 1.5 m. Note that dB(A) levels are not licensed by AMCA International.

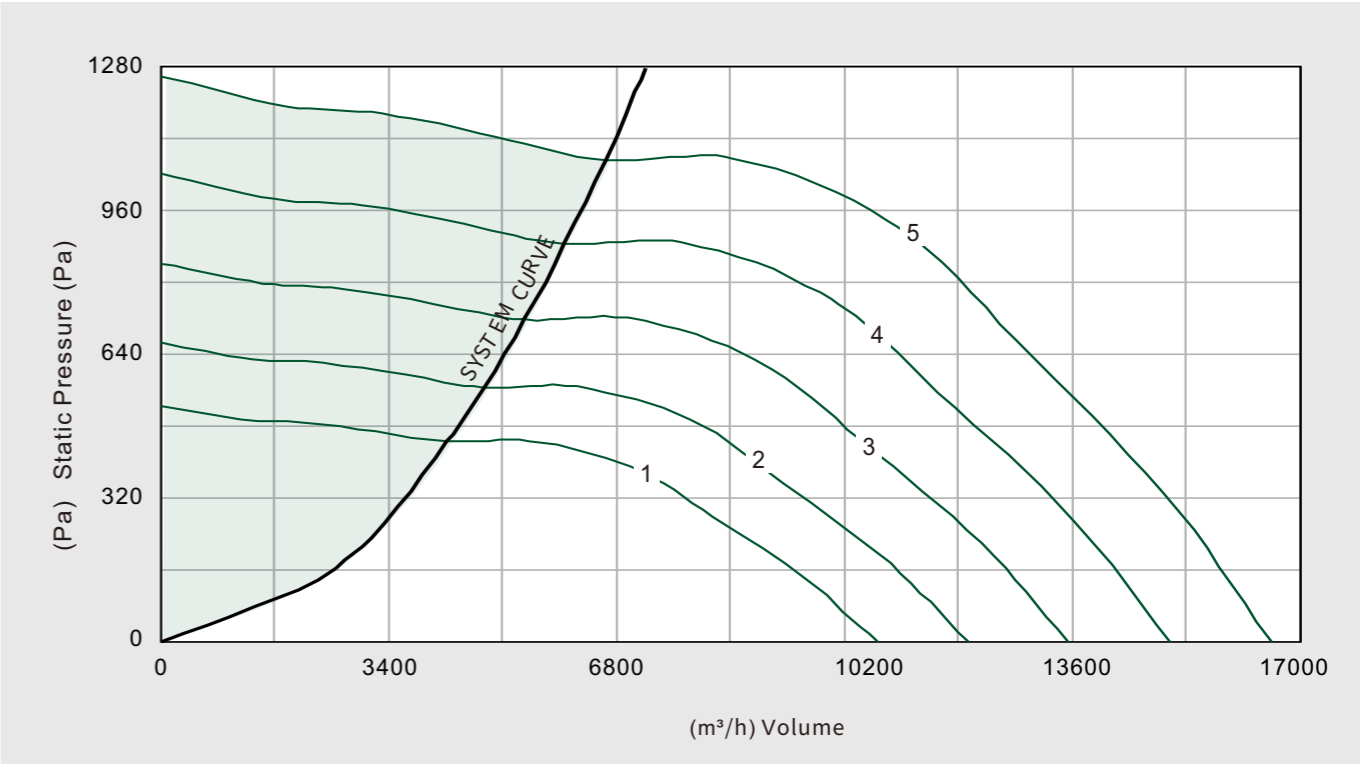
RUC-500
Model:RUC-500



YRUC-500	INFINAIR™	NO.	RPM	Volume(m³/h)	Pst(Pa)	Power(kW)	LWiA	dB(A)
		1	1331	8737	1	1.804	87	76
				7236	251	1.884	84	72
				5307	469	1.909	81	69
				3317	543	1.614	81	69
		2	1420	9321	1	2.191	89	77
				7720	286	2.287	86	74
				5662	534	2.318	83	71
				3539	618	1.960	82	71
		3	1520	9977	1	2.687	90	79
8264	328			2.806	87	76		
6061	612			2.844	84	73		
3788	709			2.404	84	73		
4	1600	10502	1	3.134	92	80		
		8699	363	3.272	89	77		
		6380	678	3.317	86	74		
		3987	785	2.804	86	74		
5	1700	11159	2	3.759	93	82		
		9243	410	3.925	90	79		
		6779	766	3.978	87	76		
		4237	886	3.363	87	76		

Performance certified is for installation type A - free inlet, free outlet with partition, Performance ratings do not include the effects of appurtenances (accessories). Power rating (kW) includes transmission losses. Values shown are for inlet LwIA sound power levels for Installation Type A: Free inlet, free outlet with partition. The A-weighted sound ratings shown have been calculated per AMCA International Standard 301. dB(A) A-weighted sound pressure level is based on 11.5 dB sound attenuation at 1.5 m. Note that dB(A) levels are not licensed by AMCA International.

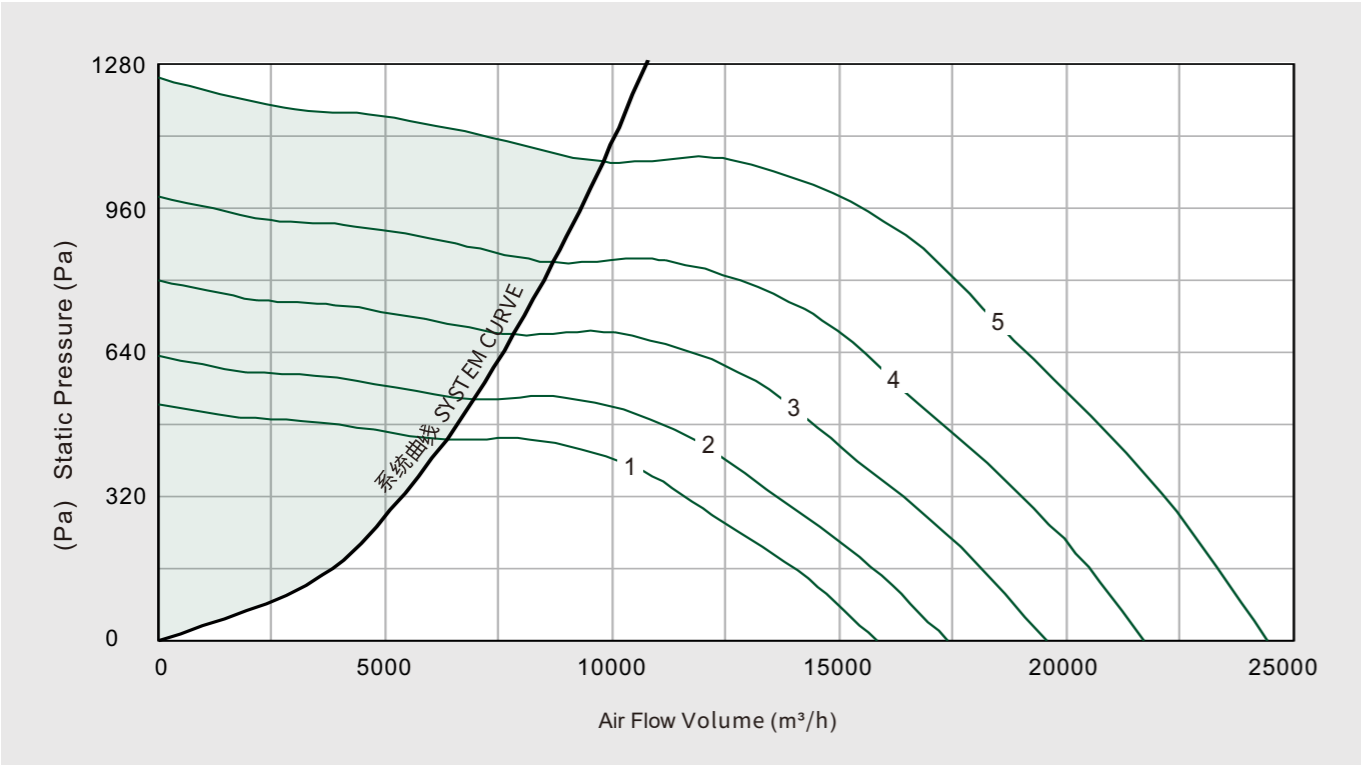
RUC-575
Model:RUC-575



RUC-575	INFINAIR™							
		NO.	RPM		Pst(Pa)	Power(kW)	LWiA	dB(A)
		1	1065	10692	1	1.497	88	77
				8240	280	1.592	85	74
				5504	448	1.479	84	73
				3222	468	1.045	84	73
		2	1200	12047	1	2.141	92	80
				9285	355	2.277	88	77
				6202	569	2.116	87	76
				3630	594	1.495	88	76
3	1350	13553	2	3.049	95	83		
		10446	450	3.243	92	80		
		6977	720	3.012	91	79		
		4084	752	2.128	91	79		
4	1500	15059	2	4.183	98	86		
		11606	555	4.448	95	83		
		7753	889	4.132	94	82		
		4538	928	2.920	94	82		
5	1650	16565	2	5.567	100	89		
		12767	672	5.920	97	86		
		8528	1075	5.500	96	85		
		4992	1123	3.886	96	85		

Performance certified is for installation type A - free inlet, free outlet with partition, Performance ratings do not include the effects of appurtenances (accessories). Power rating (kW) includes transmission losses. Values shown are for inlet LwIA sound power levels for Installation Type A: Free inlet, free outlet with partition. The A-weighted sound ratings shown have been calculated per AMCA International Standard 301. dB(A) A-weighted sound pressure level is based on 11.5 dB sound attenuation at 1.5 m. Note that dB(A) levels are not licensed by AMCA International.

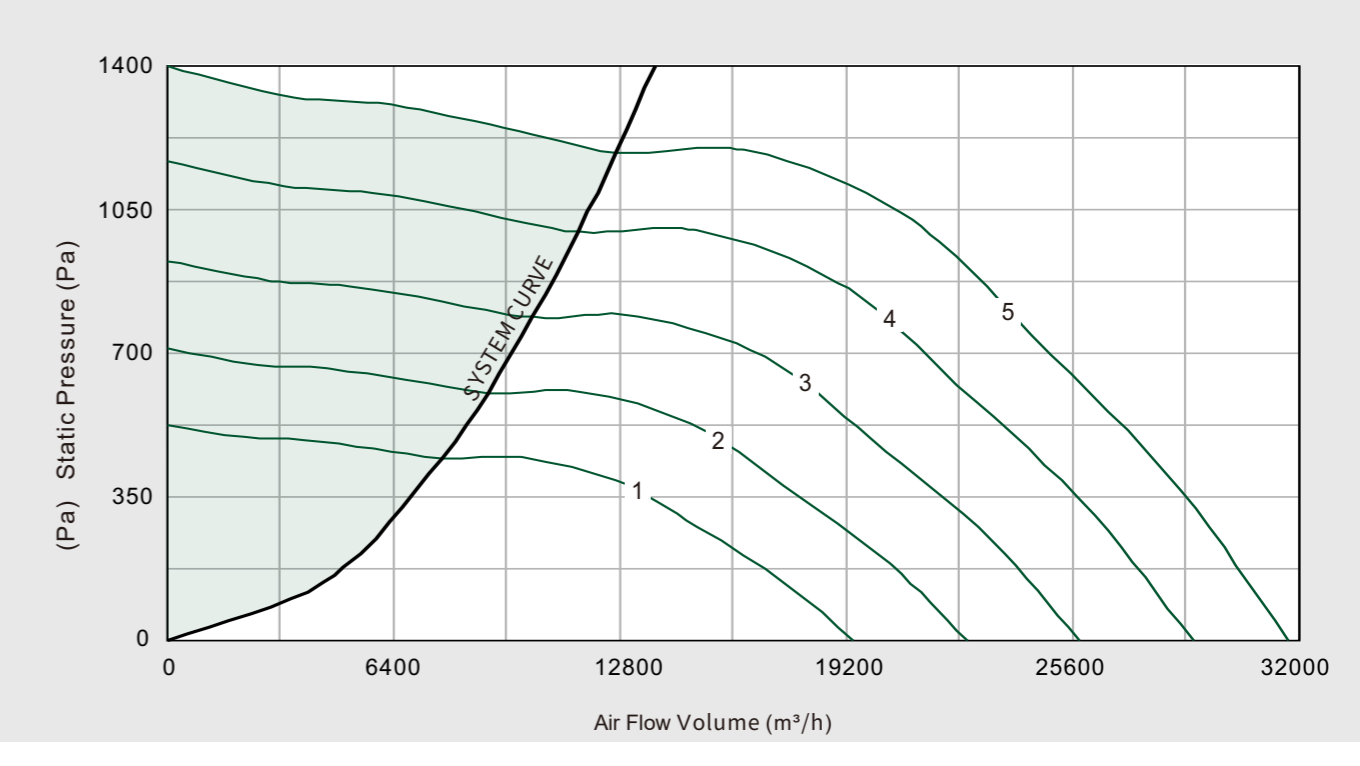
RUC-675
Model:RUC-675



INFINAIR™	RUC-675	NO.	RPM	Volume(m³/h)	Pst(Pa)	Power(kW)	LWiA	dB(A)
	1	875		15849	1	2.220	89	77
				12215	280	2.361	85	74
				8159	448	2.193	84	73
				4776	468	1.550	85	73
	2	960		17389	1	2.932	92	80
				13402	337	3.118	88	77
				8952	539	2.897	87	76
				5240	564	2.047	88	76
	3	1080		19562	2	4.174	95	83
				15077	427	4.439	91	80
				10071	683	4.124	91	79
				5895	713	2.914	91	79
	4	1200		21736	2	5.726	98	86
				16752	527	6.090	94	83
				11190	843	5.657	93	82
				6550	881	3.997	94	82
	5	1350		24453	2	8.153	101	89
				18846	667	8.671	98	86
				12589	1067	8.055	97	85
				7369	1114	5.691	97	85

Performance certified is for installation type A - free inlet, free outlet with partition, Performance ratings do not include the effects of appurtenances (accessories). Power rating (kW) includes transmission losses. Values shown are for inlet LwIA sound power levels for Installation Type A: Free inlet, free outlet with partition. The A-weighted sound ratings shown have been calculated per AMCA International Standard 301. dB(A) A-weighted sound pressure level is based on 11.5 dB sound attenuation at 1.5 m. Note that dB(A) levels are not licensed by AMCA International.

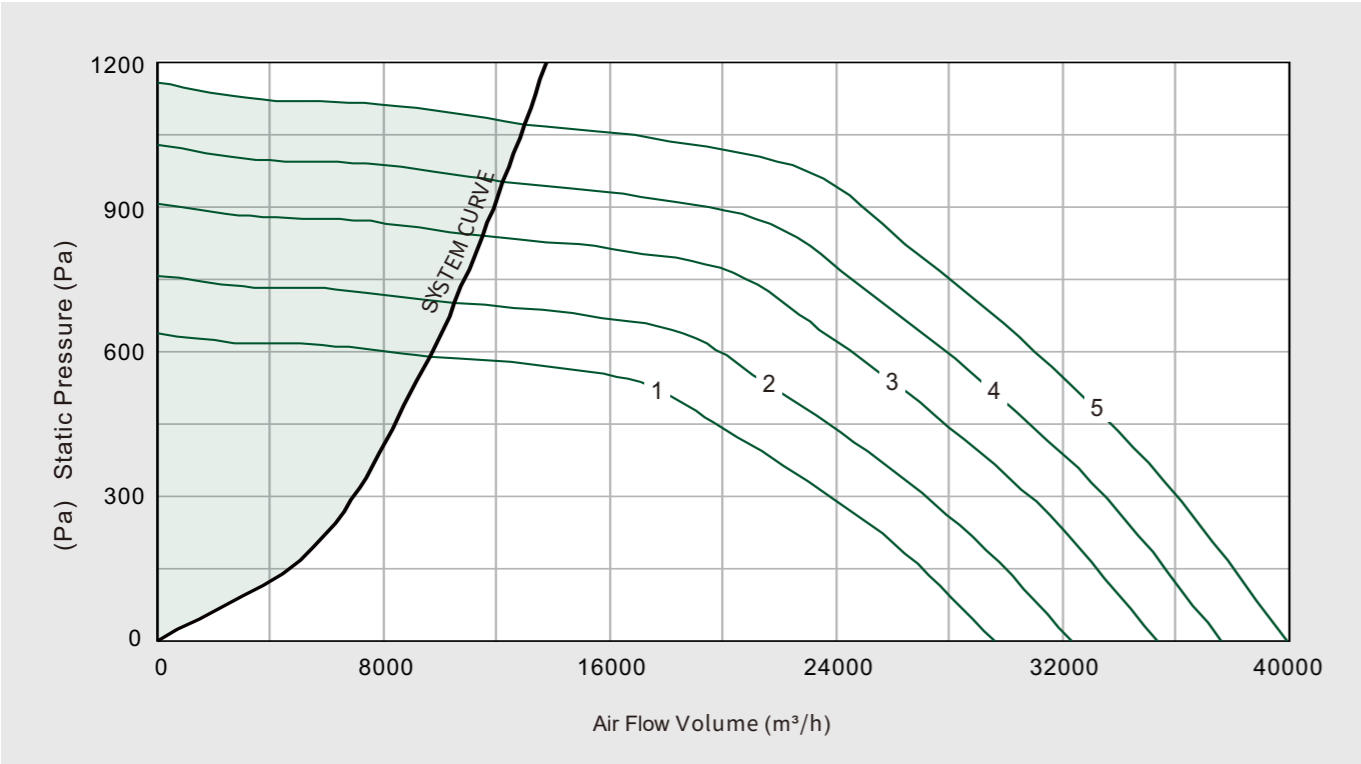
RUC-750
Model:RUC-750



INFINAIR™	RUC-750	NO.	RPM	Volume(m³/h)	Pst(Pa)	Power(kW)	LWiA	dB(A)
	1	790		19419	1	2.718	89	78
				14967	280	2.890	86	74
				9997	448	2.685	85	73
				5852	468	1.897	85	73
	2	920		22615	1	4.292	94	82
				17430	380	4.565	90	79
				11643	607	4.241	89	78
				6815	634	2.996	89	78
	3	1050		25811	2	6.381	97	86
				19893	494	6.786	94	82
				13288	791	6.305	93	81
				7778	826	4.455	93	82
	4	1180		29006	2	9.057	100	89
				22355	624	9.632	97	85
				14933	999	8.948	96	85
				8741	1044	6.322	96	85
	5	1290		31710	3	11.833	103	91
				24439	746	12.584	99	88
				16325	1194	11.691	98	87
				9556	1247	8.260	99	87

Performance certified is for installation type A - free inlet, free outlet with partition, Performance ratings do not include the effects of appurtenances (accessories). Power rating (kW) includes transmission losses. Values shown are for inlet LwIA sound power levels for Installation Type A: Free inlet, free outlet with partition. The A-weighted sound ratings shown have been calculated per AMCA International Standard 301. dB(A) A-weighted sound pressure level is based on 11.5 dB sound attenuation at 1.5 m. Note that dB(A) levels are not licensed by AMCA International.

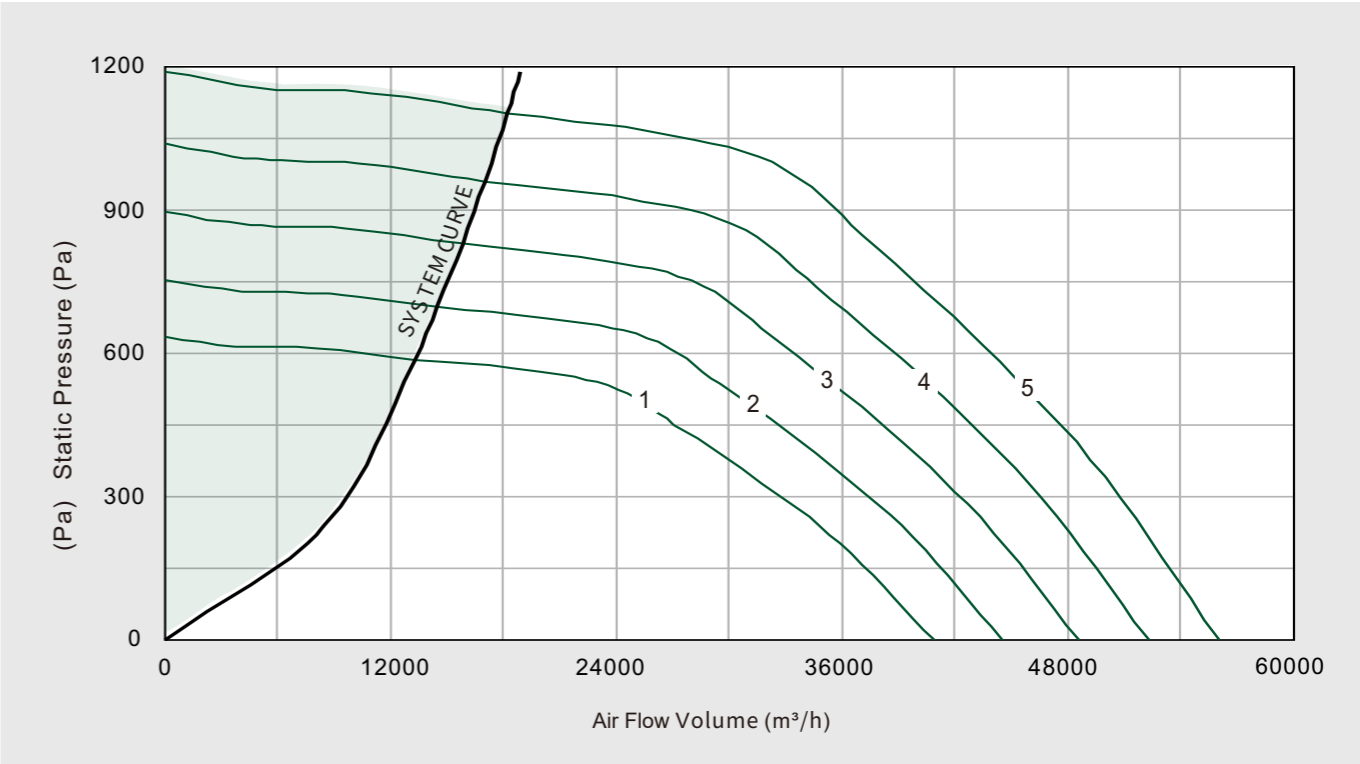
RUC-900
Model:RUC-900



INFINAIR™	RUC-900	NO.	RPM	Volume(m³/h)	Pst(Pa)	Power(kW)	LWiA	dB(A)
		1	780	29650	0	5.000	97	86
				23027	332	5.259	90	78
				17083	537	5.192	88	77
				9655	591	3.640	87	76
		2	850	32311	0	6.471	99	87
				25094	394	6.806	92	80
				18616	637	6.719	90	79
				10521	702	4.710	89	78
		3	930	35352	0	8.476	101	89
				27455	472	8.915	94	83
				20368	763	8.800	93	81
				11511	840	6.170	91	80
		4	990	37633	0	10.224	102	91
				29227	534	10.754	96	84
				21682	865	10.616	94	83
				12254	952	7.442	93	82
		5	1050	39913	0	12.198	103	92
				30998	601	12.830	97	86
				22996	973	12.665	96	84
				12997	1071	8.879	95	83

Performance certified is for installation type A - free inlet, free outlet with partition, Performance ratings do not include the effects of appurtenances (accessories). Power rating (kW) includes transmission losses. Values shown are for inlet LwiA sound power levels for Installation Type A: Free inlet, free outlet with partition. The A-weighted sound ratings shown have been calculated per AMCA International Standard 301. dB(A) A-weighted sound pressure level is based on 11.5 dB sound attenuation at 1.5 m. Note that dB(A) levels are not licensed by AMCA International.

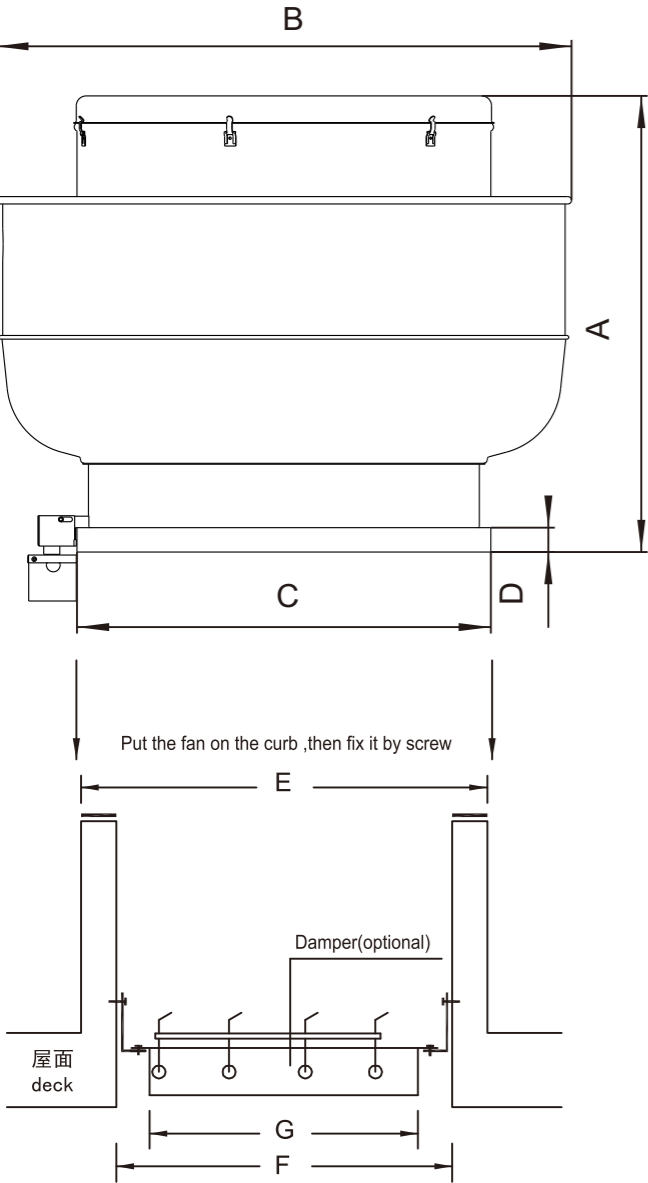
RUC-1000
Model:RUC-1000



INFINAIR™	RUC-1000	NO.	RPM	Volume(m³/h)	Pst(Pa)	Power(kW)	LWiA	dB(A)
		1	661	40914	0	6.858	97	86
				31775	330	7.214	90	78
				23572	534	7.121	88	77
				13323	587	4.993	87	75
		2	720	44566	0	8.864	100	88
				34611	391	9.323	93	81
				25676	633	9.203	91	79
				14512	697	6.452	90	78
		3	785	48590	0	11.488	102	91
				37736	465	12.083	95	83
				27994	752	11.928	93	82
				15822	829	8.362	92	81
		4	845	52303	0	14.328	104	92
				40620	539	15.070	97	85
				30134	872	14.877	95	84
				17031	960	10.430	94	82
		5	905	56017	0	17.602	105	93
				43505	618	18.514	98	87
				32274	1000	18.276	97	85
				18241	1101	12.813	96	84

Performance certified is for installation type A - free inlet, free outlet with partition, Performance ratings do not include the effects of appurtenances (accessories). Power rating (kW) includes transmission losses. Values shown are for inlet LwiA sound power levels for Installation Type A: Free inlet, free outlet with partition. The A-weighted sound ratings shown have been calculated per AMCA International Standard 301. dB(A) A-weighted sound pressure level is based on 11.5 dB sound attenuation at 1.5 m. Note that dB(A) levels are not licensed by AMCA International.

Fan size and weight



Installation instruction
1. The roof curb height shall be defined by design engineer. Wesuggest the height shall be 300mm-500mm according to local rainfall.
2. Isolation pads, steel angels and screws for roof fans in this drawing are not included in the material lists of standard products by INFINAIR.
3. The rubber isolation pads should be chosen according to the maximum weight of the fan they can bear without any deforma-tion. Typically, the thickness of pad is 5-8mm.

The below dimensions apply to all RUC types

Model	A (max)	B (mm)	C (mm)	D (mm)	(kg) Direct Weight	(kg) Belt Weight
300	651	609	500	50	19	24
425	775	780	600	50	27	33
500	921	884	750	70	35	43
575	962	968	750	70	41	49
675	1030	1108	900	53	55	64
750	1122	1251	900	53	66	76
900	1281	1488	1100	70	120	142
1000	1330	1572	1200	70	137	159

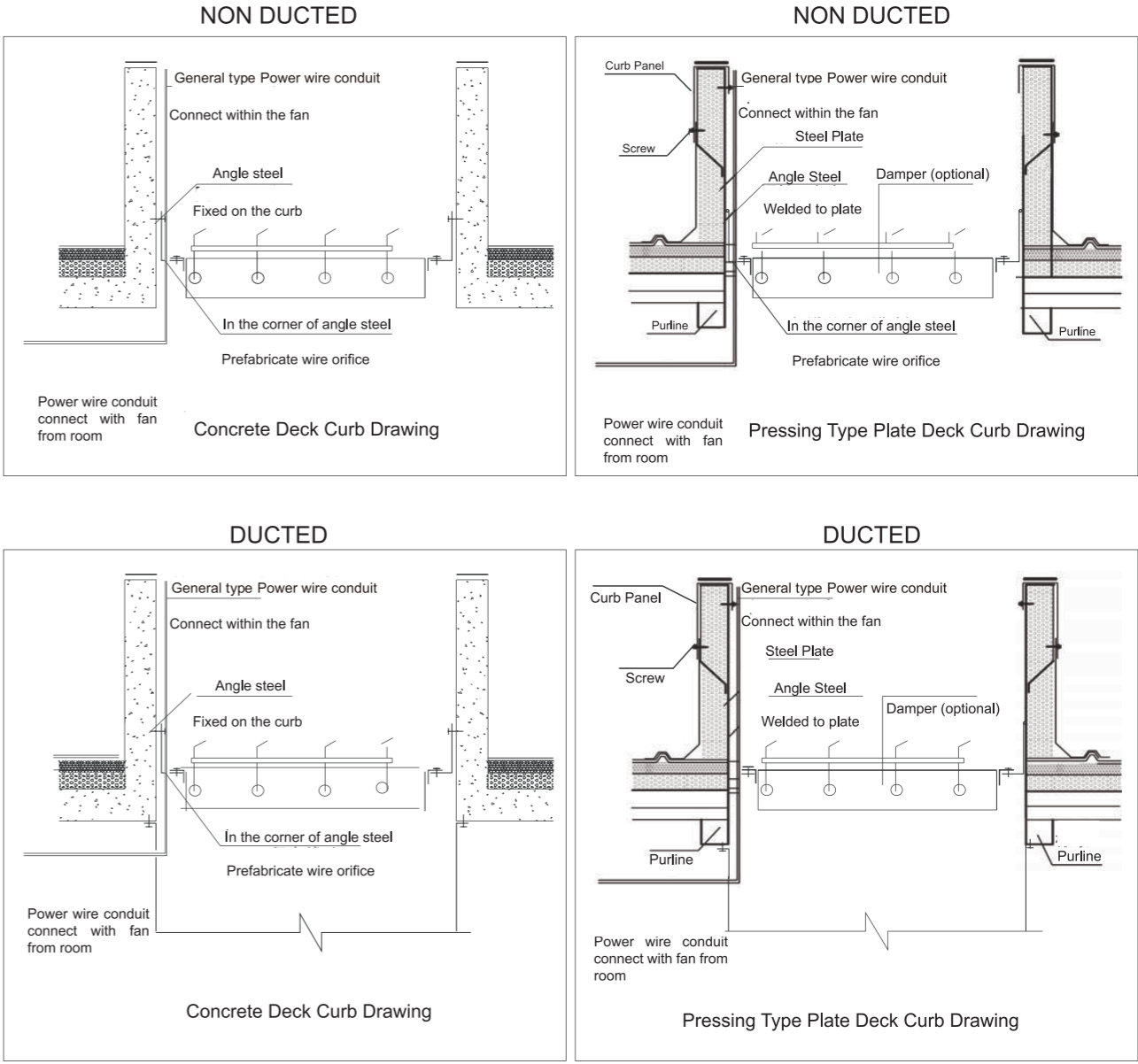
The weight in the above table does not include that of motor. Refer motor weight to the table below.

(kW)	(poles)	Motor Weigh (kg)							
		2P	4P	6P	8P	10P	12P	14P	16P
0.09	5.5	5			10				
0.12	5.5	6			10	11	13	15	18
0.18	14	13.5	14	16	10	15	17	21	
0.25	14.5	14	14.5	17	14	16	20	23	
0.37	15	14.5	16	24	17	18	21	30	
0.55	15.5	17	17	28	20	21	30	37	
0.75	16	18	23	33	23	24	36	41	
1.1	17	22	25	38	30	30	42	48	
1.5	22	27	33	45	38	42	35	58	
2.2	25	34	45	63	39	45	52	62	
3	33	38	63	79	40	50	62	67	
4	45	43	73	110	56	60	68	70	
5.5	64	68	84	121					
7.5	70	81	121	147					
11	118	124	146	182					

The below dimensions apply to all RUC types

Model	(mm) Curb Edge Size	(mm) Roof Opening Size	(mm) Damper Size	(mm) Fire Resistant Damper Size
RUC_300	490	370	300x300	420x420
RUC_425	590	470	400x400	520x520
RUC_500	740	620	550x550	670x670
RUC_575	740	620	550x550	670x670
RUC_675	890	730	650x650	780x780
RUC_750	890	730	650x650	780x780
RUC_900	1090	930	800x800	980x980
RUC_1000	1190	1030	900x900	1080x1080

Roof Curb Fabrication Detail



Used on the slope for water diversion, protect curb from direct rain damage.

ACCESSORIES

SPEED CONTROLLER



PTC RELAY



SMOKE MOTOR 400°C/2HRS



EXPLOSION PROOF (T1)



EXPLOSION PROOF (T4)



VFD

CIRCUIT BREAKER



HIGH EFFICIENCY MOTOR



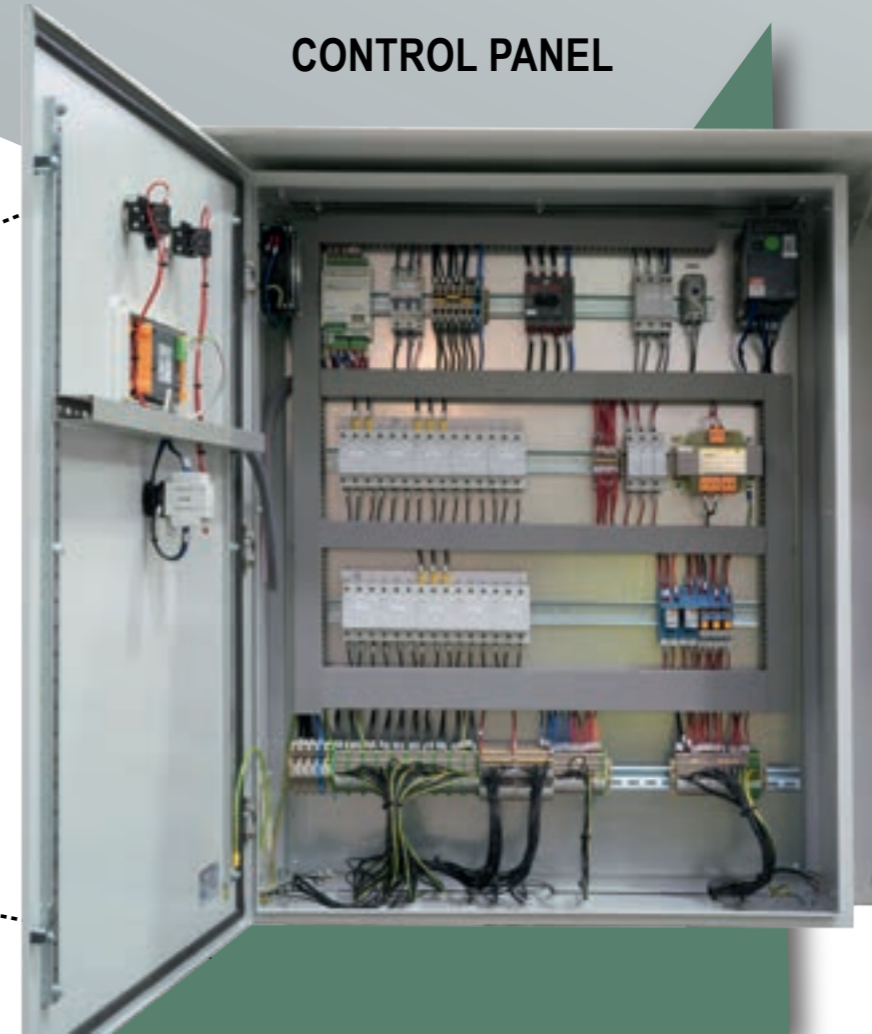
OVERLOAD RELAY



CONTACTOR



CONTROL PANEL



INFINAIR ARABIA supplies many options along with the fan to help the customers select the best optimization and homogeneity. There are Electrical, Mechanical and Controller accessories like:

- * Control Panels
- * Electric Parts
- * Duct Accessories
- * Vibration Isolators
- * Acoustic Media

The options will support easier operation, less time consuming for our clients to search the availability and granting the quality.



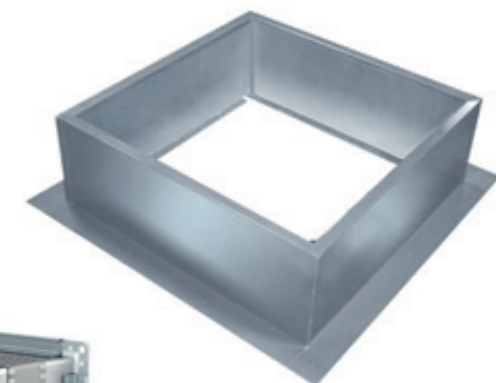
DAMPER WITH ACTUATOR



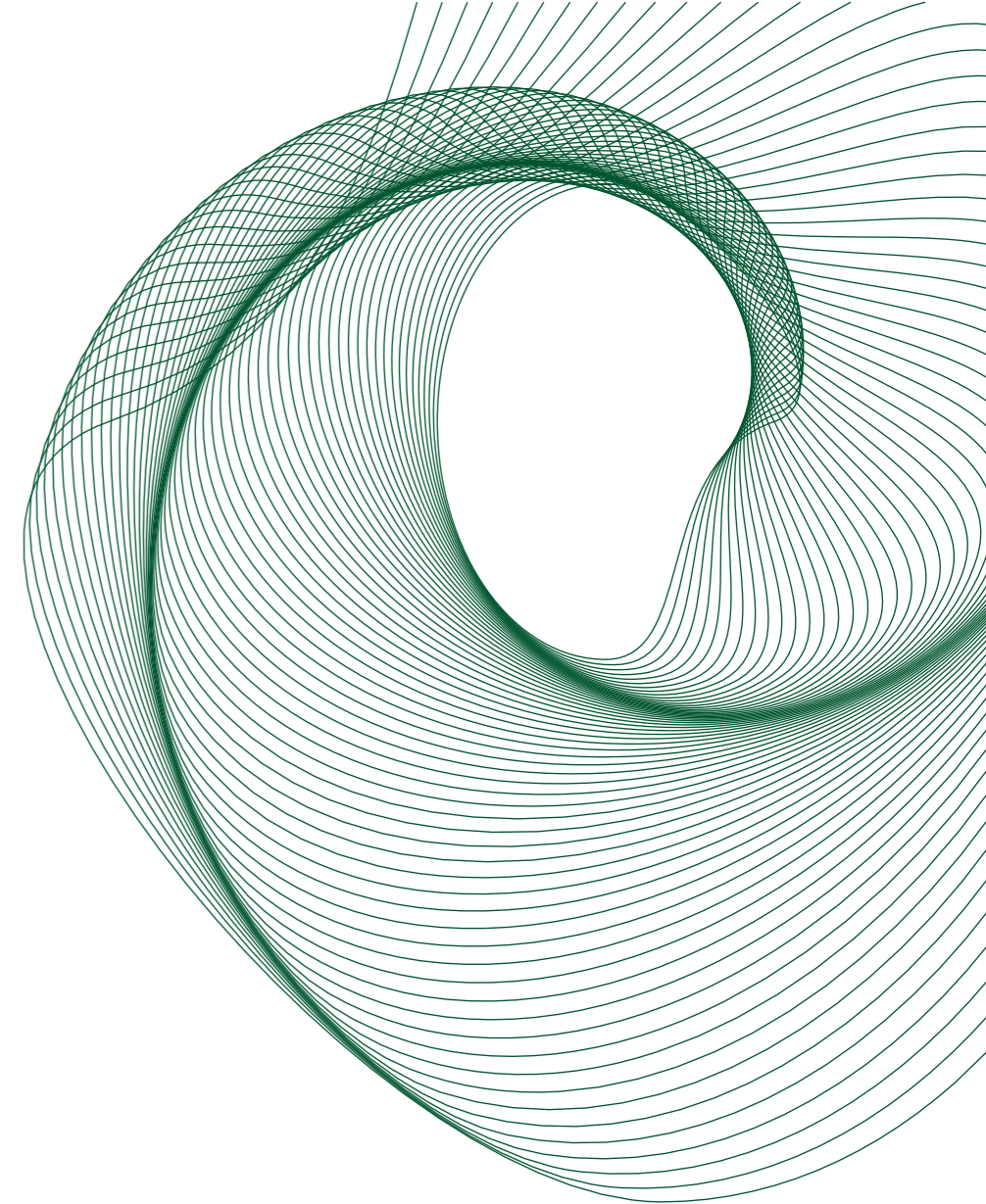
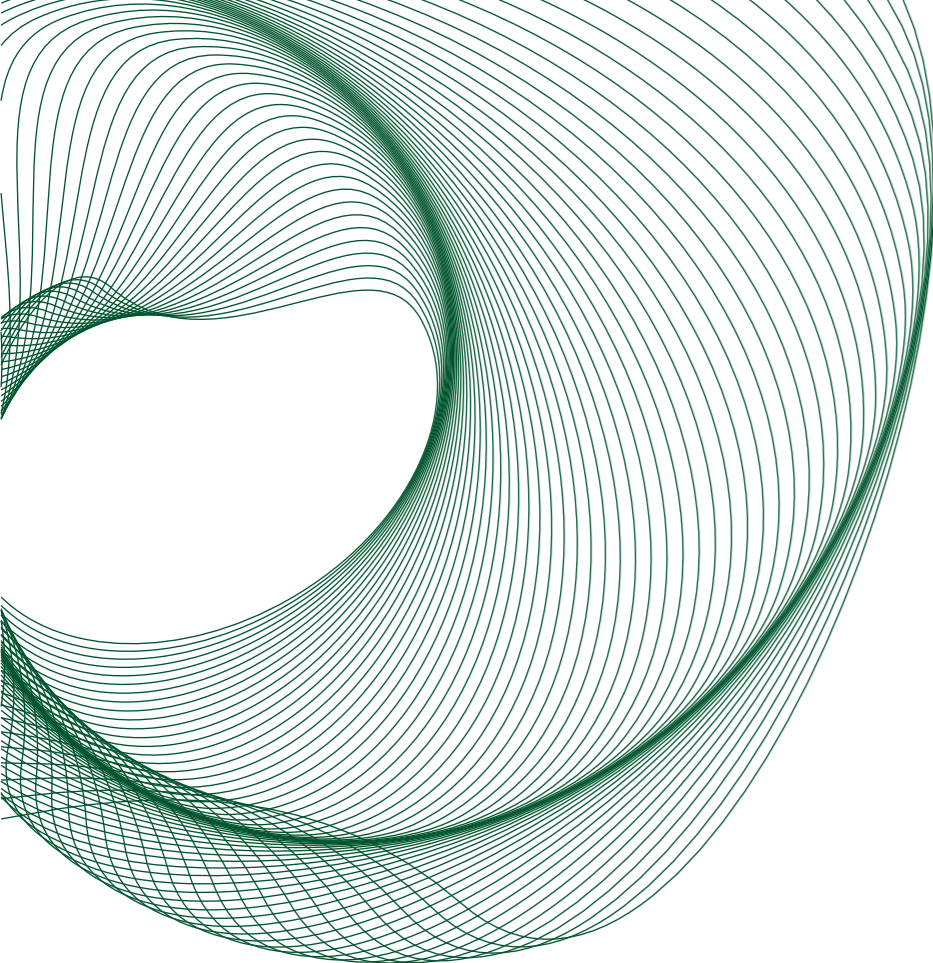
SPRINGS



FLEXIBLE CONNECTOR



ROOF CURB



FACTORY ADDRESS:

INFINAIR ARABIA CO. LTD
The Hashemite Kingdom of Jordan
Amman, Mowaqqar Industrial Zone
Free Zone, Develop Jordan

P.O. Box 20036
Amman info@infinair-arabia.com
www.infinair-arabia.com