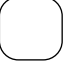






Technical Features



RAL 9016 standard  Other colors on request  Stainless steel 



Range
Up to 4.2 m



Heating types
E : electrical 3 stages
P : water
A : unheated



Casing
Galvanised Steel [*]



Airflow / Length
1560 - 6940 m³/h
1 m to 3 m



Heating capacity
E : 2 - 30.5 kW
P : 7.13 - 39.9 kW



Grille type
Micro-perforated with prefilter function



Fans
Centrifugal
5-speed



Control
Plug&Play manual regulator + IR remote control



Outlet lamellas
Aluminium, airfoil type
Adjustable 0-15° each side

[*] Customizable dimensions on request

WINDBOX air curtains range provide equipment suitable for all types of commercial entrances. A compact and robust air curtain from our standard range with a timeless design, ready for visible installation over the door and prepared for multiple false ceiling installation configurations. Casing painted in RAL 9016. Other colors are available on request.

This air curtain model works with low noise double-inlet centrifugal fans with external rotor motor. EC models assembled with very low consumption efficiency fans.

Includes Plug&Play control with 7 m RJ45 cable, infrared remote control and magnetic door contact. For electrical heated models also includes thermostat.

Certifications

(¹) AMCA Certified:

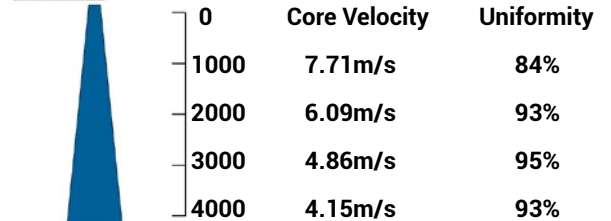


Energy Codes ASHRAE 90.1-2019, IECC 2018, and ASHRAE 189.1 vestibule exception validated by AMCA certification. Refer to Velocity Projection Chart below for information.

Airtècnics certifies that the air curtains shown here in are licensed to bear the AMCA Seal. The ratings shown are based on tests and procedures performed in accordance with AMCA Publication 211 and comply with the requirements of the AMCA Certified Ratings Program. Rated data shown is for base (unheated) units. The AMCA Certified Ratings Seal applies to airflow rate, average outlet velocity, outlet velocity uniformity, velocity projection and power rating at free delivery only.



AMCA Certified VELOCITY PROJECTION: Model Windbox ECG 1000A-240V 60Hz				
Distance from Nozzle (mm)	1000	2000	3000	4000
Core Velocity (m/s)	7.71	6.09	4.86	4.15
Uniformity (%)	84%	93%	95%	93%



CSA Certified:





❁ UNHEATED 208V-1ph~60Hz

Model	Airflow	Ventilation power	Ventilation current	Outlet Uniformity	Outlet maximum velocity	Outlet average velocity	Noise level (5 m)	Weight	
	m3/h	208V-1ph~60Hz	208V-1ph~60Hz						kW
M 1000 A (1)	1620	0.238	1.14	58	15.91	11.69	54	31	
M 1500 A (1)	2430	0.357	1.70	58	15.91	11.69	55	46	
M 2000 A (1)	3240	0.476	2.27	58	15.91	11.69	56	58	
M 2500 A (1)	4050	0.595	2.84	58	15.91	11.69	57	72	
M 3000 A (1)	4860	0.714	3.41	58	15.91	11.69	58	86	
G 1000 A	2145	0.357	1.70	-	-	-	56	43	
G 1500 A	2860	0.476	2.27	-	-	-	57	51	
G 2000 A	4290	0.714	3.41	-	-	-	58	80	
G 2500 A	5005	0.833	3.97	-	-	-	59	84	
G 3000 A	5720	0.952	4.54	-	-	-	60	95	
ECG 1000 A (1)	2445	0.350	2.63	91	15.97	13.97	60	43	
ECG 1500 A (1)	3260	0.466	3.50	91	15.97	13.97	61	51	
ECG 2000 A (1)	4890	0.699	5.25	91	15.97	13.97	62	80	
ECG 2500 A (1)	5705	0.816	6.13	91	15.97	13.97	63	84	
ECG 3000 A (1)	6520	0.932	7.00	91	15.97	13.97	64	95	

❁ UNHEATED 240V-1ph~60Hz

Model	Airflow	Ventilation power	Ventilation current	Outlet Uniformity	Outlet maximum velocity	Outlet average velocity	Noise level (5 m)	Weight	
	m3/h	240V-1ph~60Hz	240V-1ph~60Hz						kW
M 1000 A (1)	1720	0.293	1.20	58	16.45	12.20	55	31	
M 1500 A (1)	2580	0.439	1.80	58	16.45	12.20	56	46	
M 2000 A (1)	3440	0.585	2.40	58	16.45	12.20	57	58	
M 2500 A (1)	4300	0.732	3.00	58	16.45	12.20	58	72	
M 3000 A (1)	5160	0.878	3.60	58	16.45	12.20	59	86	
G 1000 A	2280	0.439	1.80	-	-	-	57	43	
G 1500 A	3040	0.585	2.40	-	-	-	58	51	
G 2000 A	4560	0.878	3.60	-	-	-	59	80	
G 2500 A	5320	1.024	4.20	-	-	-	60	84	
G 3000 A	6080	1.171	4.80	-	-	-	61	95	
ECG 1000 A (1)	2600	0.454	3.00	87	17.14	15.32	61	43	
ECG 1500 A (1)	3470	0.573	3.70	91	16.52	14.57	62	51	
ECG 2000 A (1)	5200	0.908	6.00	87	17.14	15.32	63	80	
ECG 2500 A (1)	6070	1.027	6.70	89	16.77	14.87	64	84	
ECG 3000 A (1)	6940	1.146	7.40	91	16.52	14.57	65	95	



ELECTRIC HEATED 208V-1ph~60Hz

Model	Airflow m3/h	Electrical heating capacity (²)	Electrical heating capacity (²)	Electrical heating capacity (²)	Electrical heating capacity (²)	Ventilation power 208V-1ph ~60Hz	Ventilation current 208V-1ph ~60Hz	Noise level (5 m) dB(A)	Weight kg
		208V-3ph~60Hz	460V-3ph~60Hz	480V-3ph~60Hz	575V-3ph~60Hz	kW	A		
M 1000 E (¹)	1590	2/4/6	2/4.5/6.5	2.5/5/7.5	3.5/3.5/7	0.238	1.14	54	37
M 1500 E (¹)	2385	3/6/9	3/6.5/9.5	3.5/7/10.5	5/5/10	0.357	1.70	55	57
M 2000 E (¹)	3180	4/8/12	4/8.5/12.5	4.5/9/13.5	6.5/6.5/13	0.476	2.27	56	75
M 2500 E (¹)	3975	5/8/13	5/10/15	5.5/11/16.5	8/8/16	0.595	2.84	57	94
M 3000 E (¹)	4770	6.5/8/14.5	6/12/18	6.5/13/19.5	9.5/9.5/19	0.714	3.41	58	112
G 1000 E	2115	2.5/5/7.5	2.5/5/7.5	3/5.5/8.5	3.5/4/7.5	0.357	1.70	56	52
G 1500 E	2820	3.5/6.5/10	3.5/7/10.5	4/7.5/11.5	5/5.5/10.5	0.476	2.27	57	63
G 2000 E	4230	5/9/14	5/10.5/15.5	5.5/11/16.5	6.5/8/14.5	0.714	3.41	58	100
G 2500 E	4935	5.5/9/14.5	6/12/18	6.5/13/19.5	8/9.5/17.5	0.833	3.97	59	106
G 3000 E	5640	6.5/8/14.5	6/12/18	6.5/13/19.5	9.5/9.5/19	0.952	4.54	60	120
ECG 1000 E (¹)	2415	4/8/12	4/8/12	4.3/8.7/13	4/8/12	0.350	2.63	60	52
ECG 1500 E (¹)	3220	6/9.5/15.5	5.5/10.5/16	5.8/11.7/17.5	5.5/11/16.5	0.466	3.50	61	63
ECG 2000 E (¹)	4830	5/9/14	8/16.5/24.5	8.8/17.7/26.5	8/16/24	0.699	5.25	62	100
ECG 2500 E (¹)	5635	5.5/9/14.5	9.5/18.5/28	10.2/20.3/30.5	9.5/19/28.5	0.816	6.13	63	106
ECG 3000 E (¹)	6440	6.5/8/14.5	9.5/18.5/28	10.2/20.3/30.5	9.5/19/28.5	0.932	7.00	64	120

For 208V~3ph~60Hz air curtains there is only needed to connect three-phase power supply.
For the rest of air curtains, there is needed to connect both three-phase (for electrical heating) and single phase (for fans).

ELECTRIC HEATED 240V-1ph~60Hz

Model	Airflow m3/h	Electrical heating capacity (²)	Electrical heating capacity (²)	Electrical heating capacity (²)	Electrical heating capacity (²)	Ventilation power 240V-1ph ~60Hz	Ventilation current 240V-1ph ~60Hz	Noise level (5 m) dB(A)	Weight kg
		208V-3ph~60Hz	460V-3ph~60Hz	480V-3ph~60Hz	575V-3ph~60Hz	kW	A		
M 1000 E (¹)	1690	2.5/5/7.5	3.3/6.7/10	3.7/7.3/11	3.5/7/10.5	0.293	1.20	55	37
M 1500 E (¹)	2535	3/6.5/9.5	4.8/9.7/14.5	5.2/10.3/15.5	5/10/15	0.439	1.80	56	57
M 2000 E (¹)	3380	4/8/12	6.5/13/19.5	7/14/21	6.5/13/19.5	0.585	2.40	57	75
M 2500 E (¹)	4225	5/8/13	8.2/16.3/24.5	8.8/17.7/26.5	8/16/24	0.732	3.00	58	94
M 3000 E (¹)	5070	6.5/8/14.5	9.3/18.7/28	10.3/20.3/30.5	9.5/19/28.5	0.878	3.60	59	112
G 1000 E	2250	4/8/12	4/8/12	4.3/8.7/13	4/8/12	0.439	1.80	57	52
G 1500 E	3000	6/9.5/15.5	5.3/10.7/16	5.8/11.7/17.5	5.5/11/16.5	0.585	2.40	58	63
G 2000 E	4500	5/9/14	8.2/16.3/24.5	8.8/17.7/26.5	8/16/24	0.878	3.60	59	100
G 2500 E	5250	5.5/9/14.5	9.3/18.7/28	10.2/20.3/30.5	9.5/19/28.5	1.024	4.20	60	106
G 3000 E	6000	6.5/8/14.5	9.3/18.7/28	10.2/20.3/30.5	9.5/19/28.5	1.171	4.80	61	120
ECG 1000 E (¹)	2550	4/8/12	4/8/12	4.3/8.7/13	4/8/12	0.454	3.00	61	52
ECG 1500 E (¹)	3400	6/9.5/15.5	5.3/10.7/16	5.8/11.7/17.5	5.5/11/16.5	0.573	3.70	62	63
ECG 2000 E (¹)	5100	5/9/14	8.2/16.3/24.5	8.8/17.7/26.5	8/16/24	0.908	6.00	63	100
ECG 2500 E (¹)	5950	5.5/9/14.5	9.3/18.7/28	10.2/20.3/30.5	9.5/19/28.5	1.027	6.70	64	106
ECG 3000 E (¹)	6800	6.5/8/14.5	9.3/18.7/28	10.2/20.3/30.5	9.5/19/28.5	1.146	7.40	65	120

(²) Under request other electrical heating power can be limited.



WATER HEATED 208V-1ph~60Hz

Model	Airflow m3/h	P86 (80/60°C)		P64 (60/40°C)		P54 (50/40°C)		Ventilation power 208-1ph ~60Hz kW	Ventilation current 208-1ph ~60Hz A	Noise level (5m) dB(A)	Weight kg
		Water heating capacity kW	Water pressure drop Pa	Water heating capacity kW	Water pressure drop Pa	Water heating capacity kW	Water pressure drop Pa				
		M 1000 P (!)	1560	7.13	150	7.82	4060				
M 1500 P (!)	2340	13.71	710	12.51	6000	13.06	4140	0.357	1.70	56	53
M 2000 P (!)	3120	19.85	1800	16.68	4440	16.97	1900	0.476	2.27	57	69
M 2500 P (!)	3900	25.88	3550	20.80	3570	22.14	3730	0.595	2.84	58	86
M 3000 P (!)	4680	31.94	6140	25.91	6280	27.10	5230	0.714	3.41	59	103
G 1000 P	2055	8.65	210	9.36	5590	9.44	1600	0.357	1.70	55	35
G 1500 P	2740	15.15	850	13.89	7220	14.63	5060	0.476	2.27	56	53
G 2000 P	4110	23.57	2440	20.02	6140	20.69	2700	0.714	3.41	57	69
G 2500 P	4795	29.46	4470	23.88	4560	25.70	4860	0.833	3.97	58	86
G 3000 P	5480	35.30	7330	28.79	7570	30.38	6400	0.952	4.54	59	103
ECG 1000 P (!)	2355	11.34	1290	10.21	6510	10.37	1900	0.350	2.63	55	35
ECG 1500 P (!)	3140	16.47	990	15.17	8440	16.10	6000	0.466	3.50	56	53
ECG 2000 P (!)	4710	25.61	2830	21.84	7170	22.76	3200	0.699	5.25	57	69
ECG 2500 P (!)	5495	32.04	5180	26.10	5330	28.29	5770	0.816	6.13	58	86
ECG 3000 P (!)	6280	38.42	8520	31.49	8860	33.47	7600	0.932	7.00	59	103

Water heated: connection pipes P86 and P64 are 2x3/4" female (male if lateral pipes), P54 2x1" male.
P86 2 rows coil, P64 3 rows coil, P54 4 rows coil.

WATER HEATED 240V-1ph~60Hz

Model	Airflow m3/h	P86 (80/60°C)		P64 (60/40°C)		P54 (50/40°C)		Ventilation power 240-1ph ~60Hz kW	Ventilation current 240-1ph ~60Hz A	Noise level (5m) dB(A)	Weight kg
		Water heating capacity kW	Water pressure drop Pa	Water heating capacity kW	Water pressure drop Pa	Water heating capacity kW	Water pressure drop Pa				
		M 1000 P (!)	1660	7.46	160	8.15	4370				
M 1500 P (!)	2490	14.26	760	13.04	6460	13.66	4490	0.439	1.80	57	53
M 2000 P (!)	3320	20.65	1930	17.39	4780	17.76	2060	0.585	2.40	58	69
M 2500 P (!)	4150	26.92	3810	21.69	3840	23.16	4040	0.732	3.00	59	86
M 3000 P (!)	4980	33.23	6590	27.01	6760	28.35	5660	0.878	3.60	60	103
G 1000 P	2190	10.86	1190	9.75	6000	9.87	1740	0.439	1.80	56	35
G 1500 P	2920	15.76	910	14.48	7770	15.30	5490	0.585	2.40	57	53
G 2000 P	4380	24.51	2620	20.86	6600	21.64	2930	0.878	3.60	58	69
G 2500 P	5110	30.64	4790	24.90	4910	26.88	5270	1.024	4.20	59	86
G 3000 P	5840	36.73	7870	30.03	8150	31.79	6940	1.171	4.80	60	103
ECG 1000 P (!)	2500	11.74	1370	10.59	6950	10.80	2040	0.454	3.00	61	35
ECG 1500 P (!)	3340	17.09	1050	15.78	9050	16.8	6480	0.573	3.70	62	53
ECG 2000 P (!)	5000	26.54	3020	22.70	7670	23.71	3450	0.908	6.00	63	69
ECG 2500 P (!)	5840	22.25	5530	27.14	5720	29.51	6220	1.027	6.70	64	86
ECG 3000 P (!)	6680	39.9	9110	32.77	9510	34.96	8210	1.146	7.40	65	103

Water heated: connection pipes P86 and P64 are 2x3/4" female (male if lateral pipes), P54 2x1" male.
P86 2 rows coil, P64 3 rows coil, P54 4 rows coil.

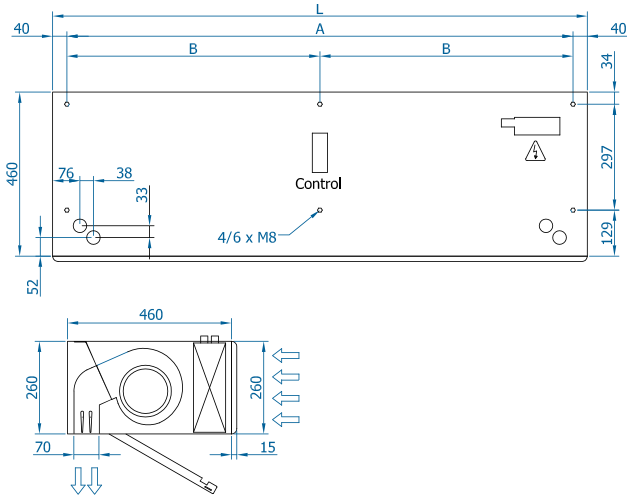


Selection program

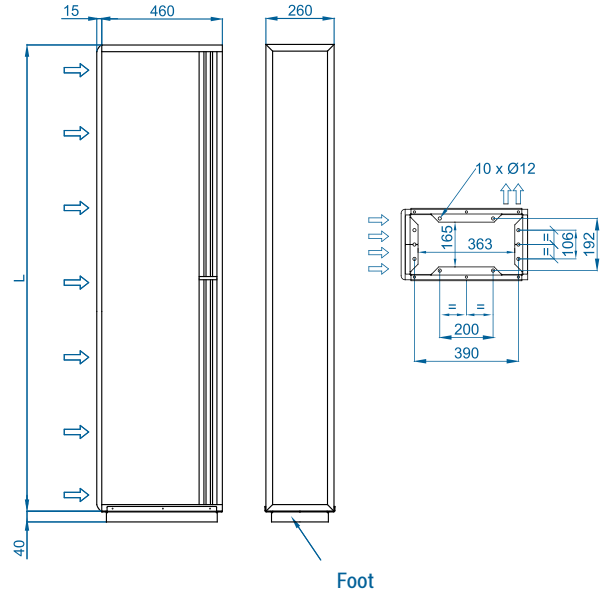


Dimensions

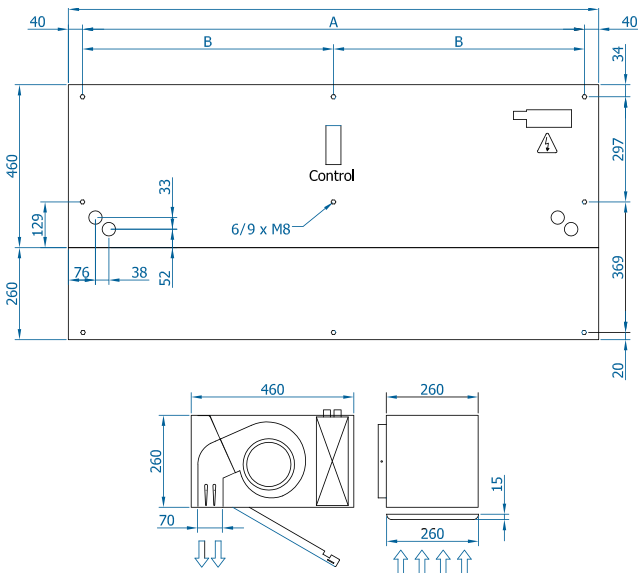
Horizontal installation



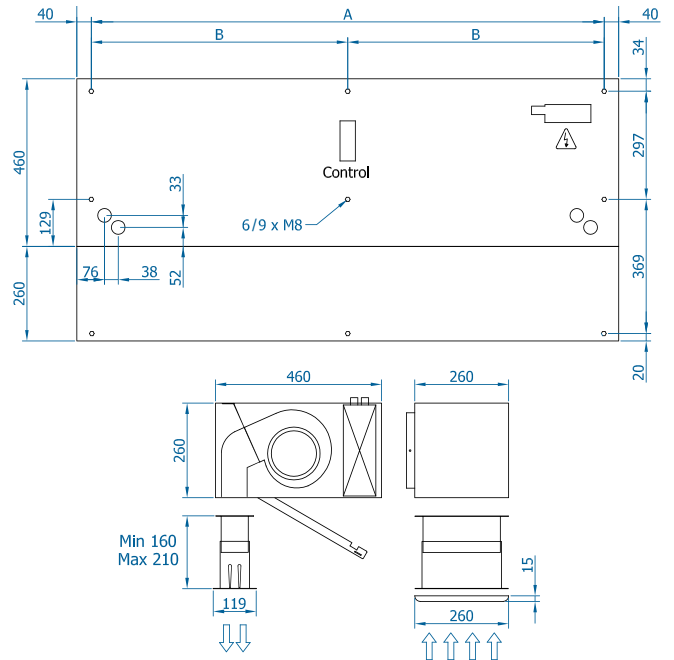
Vertical installation



Inside ceiling surface mounting



False ceiling invisible mounting



L	A	B
1000	920	-
1500	1420	710
2000	1920	960
2500	2420	1210
3000	2920	1460

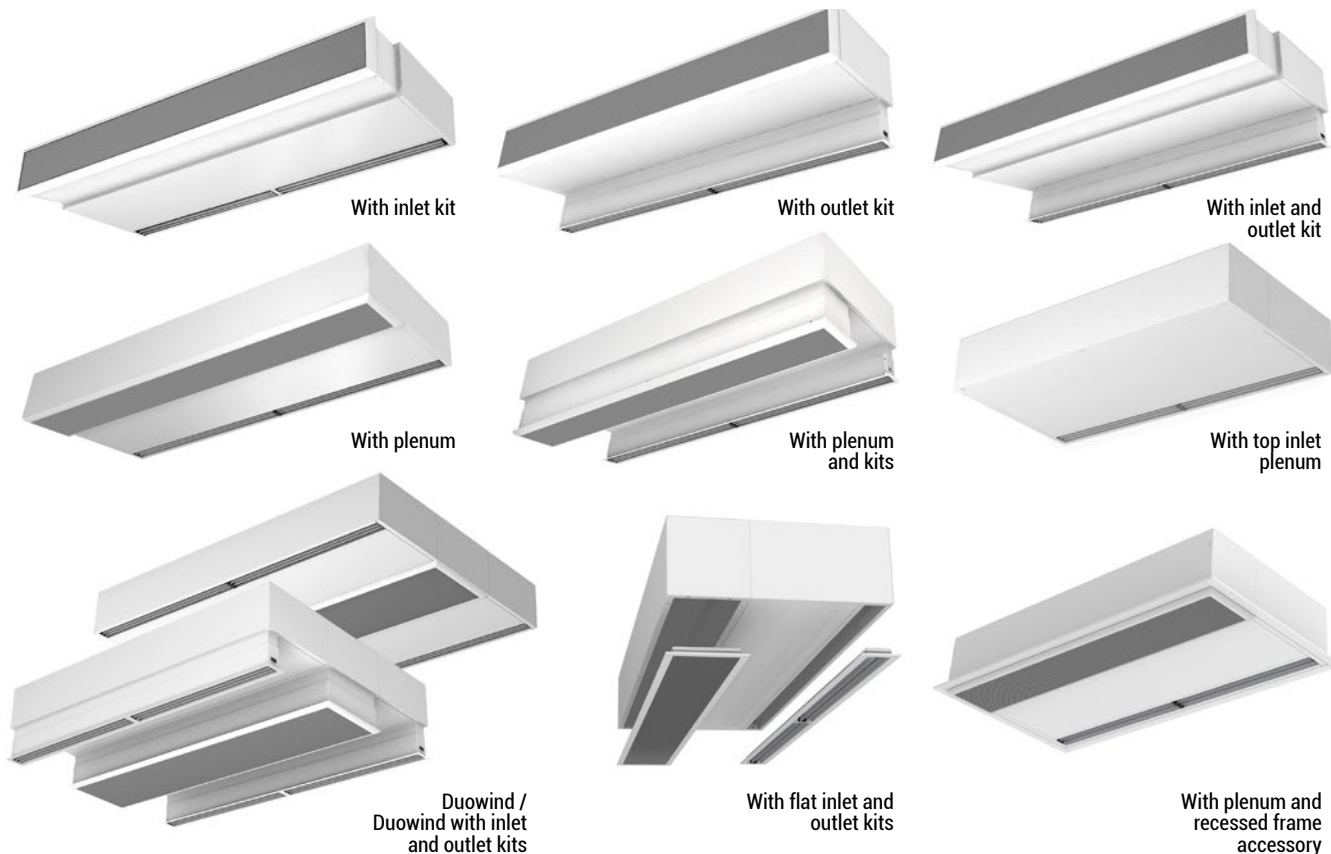
Customizable dimensions on request.

CAD drawings, installation manuals
and other documentation



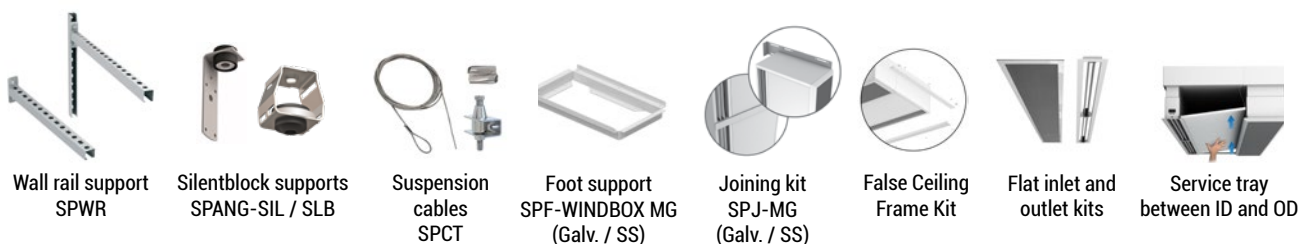


Installation Configurations



Optional accessories

Supports and installation



Control



Sensors

