



PCD300IL INLINE FAN



Experience efficient ventilation with our multi-speed inline fan, powered by a high-performance EC motor, for residential and light commercial spaces. Perfect for homes, offices, restrooms, and workshops, ensuring optimal air quality while minimizing energy costs.

SPECIFICATIONS

Standard Features:

- Designed for quiet continuous operation as an Inline Exhaust and Supply Air Fan.
- The supply air Merv13 filter is available as an optional accessory.
- Equipped with 4 adjustable speed settings: 300 CFM, 200 CFM, 150 CFM, 100 CFM with additional knob for speed control.
- Optional dual-speed operation, allowing low-speed continuous use and high-speed activation via a switch
- Built-in time delay setting.
- 22 GA galvanized steel housing construction.
- Built-in overload disconnect for safety and longer motor life.

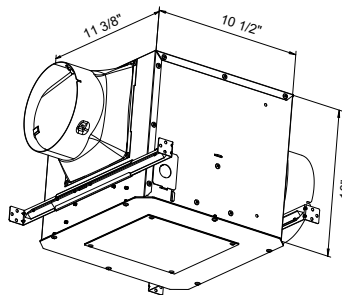
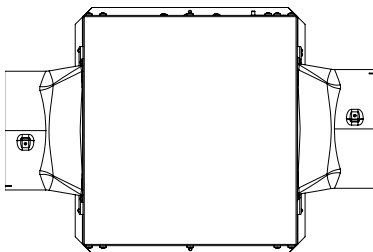
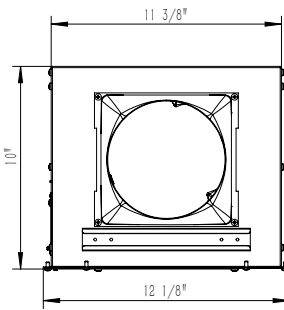
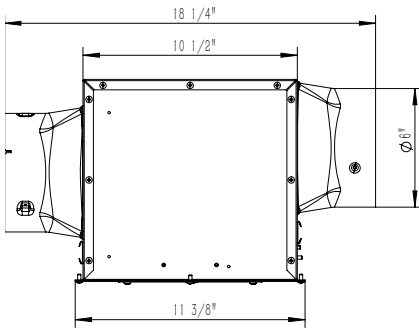
Optional General Accessories:

- Optional Merv13 Filter: PCD300IL-M13F
- 6" Metal Interior Adjustable Round Grille: BOC150
- 6" Steel Backdraft Damper: CAR150
- 6" Duct Reducer: SR6-4
- 6" Intake Grille with Steel Collar: PG-150
- 6" Plastic Interior Adjustable Round Grille: BOC150
- 6" Aluminum Exterior Fixed Grille: GRA-150
- Vent Light with PAR30 LED Bulb: VLED-100
- 6" Plastic Louver Shutter: PER-150W
- 6" Connector Clamps: ACOP-V150
- 6" Roof Cap: RC-6
- 6" Y Sheet Metal Adapter: SY-6

Optional Electric Accessories:

- ASHRAE 62.2 Bath Fan Ventilation Controller: FT622
- Programmable Fan Timer 24 Hour/7 Day: FT247
- 6" Duct Heater 120V: DH6-120V
- 6" Motorized Damper: MD6
- EnviroSense Ventilation Control 24V: ES24V

DIMENSIONS



CERTIFICATIONS



S&P USA Ventilation Systems, LLC certifies that PCD300IL shown herein is licensed to bear the AMCA Seal. The ratings shown are based on tests and procedures performed in accordance with AMCA 211 and comply with the requirements of the AMCA Certified Rating Program.





PCD300IL

INLINE FAN



S&P USA Ventilation Systems, LLC certifies that PCD300IL shown herein is licensed to bear the AMCA Seal. The ratings shown are based on tests and procedures performed in accordance with AMCA 211 and comply with the requirements of the AMCA Certified Rating Program.

FAN PERFORMANCE

AMCA PERFORMANCE															
AIRFLOW PERFORMANCE (INLINE EXHAUST)															
SPEED SETTING		STATIC PRESSURE IN INCHES W.G.													
		0	0.1	0.125	0.2	0.25	0.375	0.4	0.5	0.625	0.75	0.8	0.875	1	1.125
300 CFM	CFM	320	313	311	302	300	295	293	287	279	274	271	264	248	186
	HP	0.085	0.089	0.091	0.098	0.101	0.103	0.106	0.111	0.119	0.126	0.13	0.139	0.134	0.107
	EFFICACY (CFM/WATTS)				4.15										
200 CFM	CFM	231	225	223	217	215	213	212	209	205	201	200	199	198	189
	HP	0.034	0.038	0.039	0.047	0.05	0.054	0.056	0.062	0.072	0.082	0.086	0.096	0.101	0.109
	EFFICACY (CFM/WATTS)				6.25										
150 CFM	CFM	156	154	158	159	159	159	159	157	157	154	153	149	146	144
	HP	0.014	0.018	0.02	0.028	0.032	0.035	0.037	0.044	0.053	0.063	0.065	0.073	0.081	0.086
	EFFICACY (CFM/WATTS)				7.73										
100 CFM	CFM	116	111	110	110	110	109	109	109	108	106	105	105	105	104
	HP	0.008	0.012	0.013	0.019	0.023	0.027	0.027	0.032	0.04	0.047	0.051	0.055	0.062	0.07
	EFFICACY (CFM/WATTS)				7.61										

Note: Performance certified is for installation Type D: Ducted Inlet, Ducted Outlet. Performance rating do include the effects of appurtenances. AMCA Licensed performance ratings.

HVI PERFORMANCE (INLINE EXHAUST)					
SPEED SETTING		STATIC PRESSURE IN INCHES W.G.			
		0.2	0.4	0.6	0.8
300 CFM	CFM	311	297	285	275
	WATTS	65.1	73	81.5	90.8
	EFFICACY (CFM/WATTS)	4.78			
200 CFM	CFM	216.3	208.1	201.7	196.9
	WATTS	29.9	38.8	49	60
	EFFICACY (CFM/WATTS)	7.23			
150 CFM	CFM	152.1	153	149.7	145.9
	WATTS	17.1	26.3	36.8	46.5
	EFFICACY (CFM/WATTS)	8.89			
100 CFM	CFM	105.1	101.7	100.5	97.1
	WATTS	11.6	19.4	27.3	35.8
	EFFICACY (CFM/WATTS)	9.06			

HVI PERFORMANCE (INLINE SUPPLY AIR - MERV13 FILTER)					
SPEED SETTING		STATIC PRESSURE IN INCHES W.G.			
		0.2	0.4	0.6	0.8
300 CFM	CFM	278	258	212	165
	WATTS	91.5	94.6	80.4	67.7
	EFFICACY (CFM/WATTS)	3.04			
200 CFM	CFM	204	200	196	161
	WATTS	49.2	61.4	73.4	66.7
	EFFICACY (CFM/WATTS)	4.15			
150 CFM	CFM	154	150	146	141
	WATTS	29.5	39.2	48.4	57.8
	EFFICACY (CFM/WATTS)	5.22			
100 CFM	CFM	103	101	99	99
	WATTS	17.1	24.8	33.6	42
	EFFICACY (CFM/ WATTS)	6.02			

