



S&P USA VENTILATION SYSTEMS

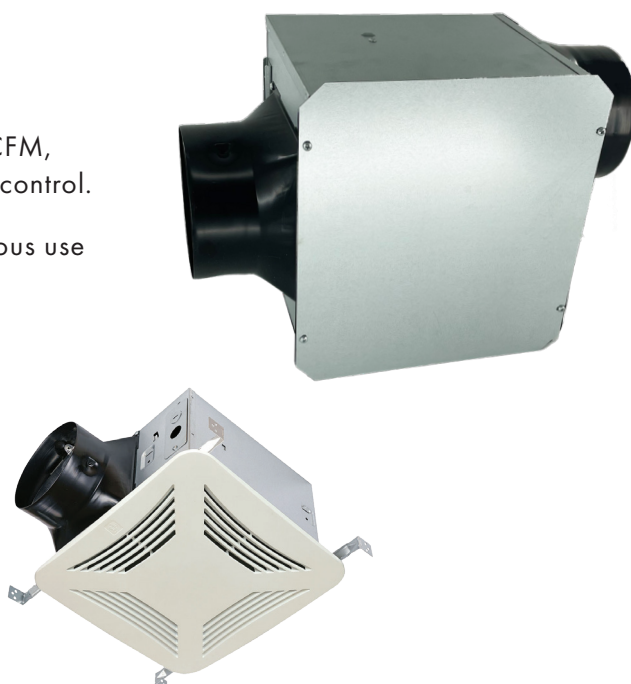
# PREMIUM CHOICE PCD300IL

EFFICIENT AIRFLOW IN LIGHT COMMERCIAL SPACES

Experience efficient ventilation with our multi-speed inline fan, powered by a high-performance EC motor, for light commercial spaces. Perfect for offices, restrooms, and workshops, ensuring optimal air quality while minimizing energy costs.

## STANDARD FEATURES

- Designed for super quiet continuous operation.
- Equipped with 4 adjustable speed settings: 300 CFM, 200 CFM, 150 CFM, and 100 CFM, with an additional knob for speed control.
- Optional dual-speed operation, allowing low-speed continuous use and high-speed activation via a switch or humidity sensor.
- Built-in humidity sensor that lets the fan run on a user-adjustable setpoint (can be disabled).
- Built-in time delay setting (can be disabled).
- Can be easily field convertible to Ceiling Mounted exhaust fan.
- 26 ga galvanized steel housing construction.
- Built-in overload disconnect for safety and longer motor life.





# PCD300IL

## PERFORMANCE DATA



S&P USA Ventilation Systems, LLC. Certifies that PCD300IL shown herein is licensed to bear the AMCA Seal. The ratings shown are based on tests and procedures performed in accordance with AMCA 211 and comply with the requirements of the AMCA Certified Rating Program.

### AIRFLOW PERFORMANCE (CEILING MOUNT ORIENTATION)

SPEED SETTING		STATIC PRESSURE IN INCHES W.G.													
		0	0.1	0.125	0.2	0.25	0.375	0.4	0.5	0.625	0.75	0.8	0.875	1	1.125
300 CFM	CFM	331	322	320	310	305	301	299	292	284	277	274	269	257	199
	HP	0.082	0.087	0.088	0.095	0.098	0.102	0.104	0.109	0.118	0.125	0.129	0.136	0.138	0.113
	EFFICACY (CFM/WATTS)				4.25										
200 CFM	CFM	244	238	236	227	225	221	221	216	213	213	207	205	204	197
	HP	0.033	0.038	0.039	0.047	0.050	0.055	0.056	0.063	0.073	0.082	0.085	0.094	0.103	0.110
	EFFICACY (CFM/WATTS)				6.53										
150 CFM	CFM	156	154	158	159	159	159	159	157	157	154	153	149	146	144
	HP	0.014	0.020	0.022	0.028	0.032	0.037	0.039	0.044	0.052	0.062	0.064	0.071	0.082	0.088
	EFFICACY (CFM/WATTS)				7.73										
100 CFM	CFM	116	111	110	110	110	109	109	109	108	106	105	105	105	104
	HP	0.008	0.012	0.013	0.019	0.023	0.027	0.027	0.032	0.040	0.048	0.050	0.057	0.064	0.072
	EFFICACY (CFM/WATTS)				7.61										

Performance certified is for installation Type B: Free Inlet, Ducted Outlet. Performance rating do include the effects of appurtenances. AMCA Licensed performance ratings.

### AIRFLOW PERFORMANCE (INLINE ORIENTATION)

SPEED SETTING		STATIC PRESSURE IN INCHES W.G.													
		0	0.1	0.125	0.2	0.25	0.375	0.4	0.5	0.625	0.75	0.8	0.875	1	1.125
300 CFM	CFM	320	313	311	302	300	295	293	287	279	274	271	264	248	186
	HP	0.085	0.089	0.091	0.098	0.101	0.103	0.106	0.111	0.119	0.126	0.130	0.139	0.134	0.107
	EFFICACY (CFM/WATTS)				4.15										
200 CFM	CFM	231	225	223	217	215	213	212	209	205	201	200	199	198	189
	HP	0.034	0.038	0.039	0.047	0.050	0.054	0.056	0.062	0.072	0.082	0.086	0.096	0.101	0.109
	EFFICACY (CFM/WATTS)				6.25										
150 CFM	CFM	156	154	158	159	159	159	159	157	157	154	153	149	146	144
	HP	0.014	0.018	0.020	0.028	0.032	0.035	0.037	0.044	0.053	0.063	0.065	0.073	0.081	0.086
	EFFICACY (CFM/WATTS)				7.73										
100 CFM	CFM	116	111	110	110	110	109	109	109	108	106	105	105	105	104
	HP	0.008	0.012	0.013	0.019	0.023	0.027	0.027	0.032	0.040	0.047	0.051	0.055	0.062	0.070
	EFFICACY (CFM/WATTS)				7.61										

Performance certified is for installation Type D: Ducted Inlet, Ducted Outlet. Performance rating do include the effects of appurtenances. AMCA Licensed performance ratings.

PCD January\_2025