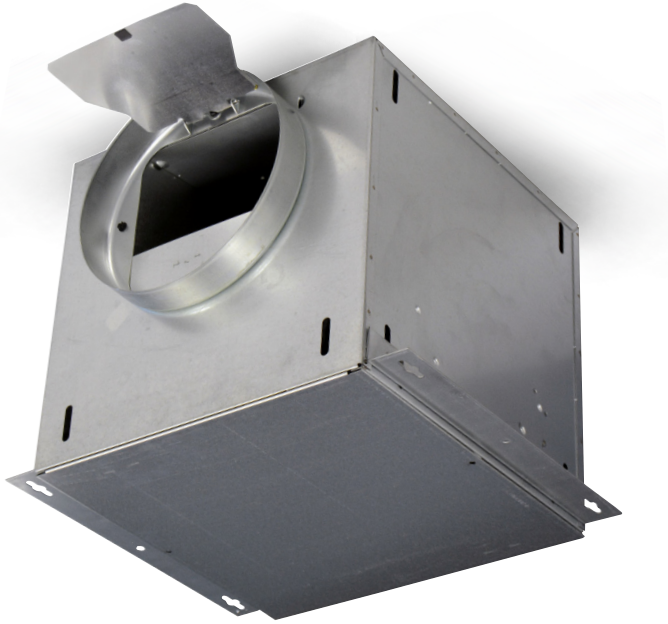


Commercial Inline Exhaust

CBFI SERIES

Inline Exhausters. Ideal for offices, conference rooms, public restrooms and more.



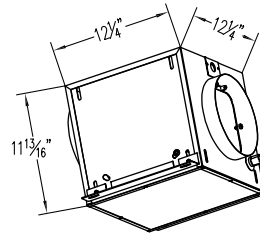
CBFI150, CBFI300



FEATURES

- Available in 4 sizes with CFM's ranging from 66 to 1200 CFM.
- EC motor with forward curved wheel.
- Built in speed control.
- Low profile, quiet and energy efficient, inline exhauster with insulated cabinet.

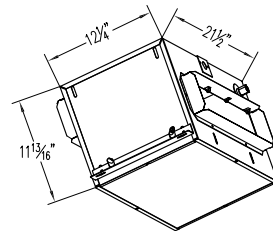
DIMENSIONS



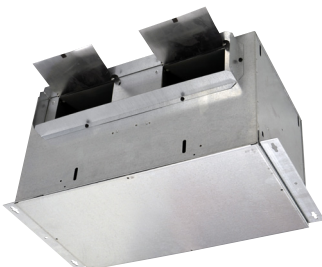
CBFI150 / CBFI300
Duct Diameter:
CBFI150 - 6"
CBFI300 - 8"



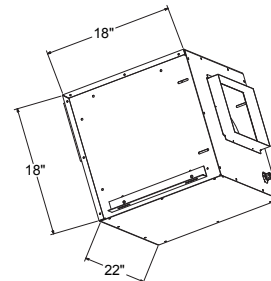
CBFI1500



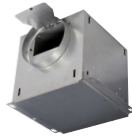
CBFI700
Duct Diameter
18 1/2" x 4 1/2"



CBFI700



CBFI1500
Duct Diameter
13 1/4" x 8 1/4"



CBFI SERIES Commercial Inline Exhaust

PERFORMANCE SPECIFICATIONS

CBFI150	1.8 sones @ nominal 1/8" static and 10V																		The sound ratings shown are loudness values in hemispherical sones at 1.5 m (5 ft) in a hemispherical free field calculated per ANSI/AMCA Standard 301. Values shown are for installation Type A: free inlet hemispherical sone levels.					
SPEED CONTROL VOLTS	STATIC PRESSURE																							
	0"			0.125"			0.25"			0.375"			0.5"			0.75"			1"					
	CFM	RPM	W	CFM	RPM	W	CFM	RPM	W	CFM	RPM	W	CFM	RPM	W	CFM	RPM	W	CFM	RPM	W			
10	158	808	15	137	879	16	117	959	17	97	1063	18	74	1170	20	17	1283	22	16	-	-			
5	157	805	14	137	874	15	117	958	17	97	1063	18	73	1170	20	22	1300	22	-	-	-			
2.5	122	652	8	97	738	9	72	867	11	40	987	12	8	1038	12	97	-	-	-	-	-			

The AMCA certified ratings seal applies for sound and air performance without the effect of appurtenances. Performance certified is for installation type "D" - Ducted Inlet, Ducted outlet

CBFI300	5.1 sones @ nominal 1/8" static and 10V																		The sound ratings shown are loudness values in hemispherical sones at 1.5 m (5 ft) in a hemispherical free field calculated per ANSI/AMCA Standard 301. Values shown are for installation Type A: free inlet hemispherical sone levels.					
SPEED CONTROL VOLTS	STATIC PRESSURE																							
	0"			0.125"			0.25"			0.375"			0.5"			0.75"			1"					
	CFM	RPM	W	CFM	RPM	W	CFM	RPM	W	CFM	RPM	W	CFM	RPM	W	CFM	RPM	W	CFM	RPM	W			
10	333	1110	54	319	1174	57	305	1236	59	289	1298	62	273	1359	65	241	1477	70	201	1642	76			
5	238	810	22	220	905	24	197	992	26	175	1074	28	150	1176	30	105	1440	37	64	1581	40			
2.5	152	549	8	119	685	9	84	840	11	54	983	12	19	1114	14	-	-	-	-	-	-			

The AMCA certified ratings seal applies for sound and air performance without the effect of appurtenances. Performance certified is for installation type "D" - Ducted Inlet, Ducted outlet

CBFI700	7.2 sones @ nominal 1/8" static and 10V																		The sound ratings shown are loudness values in hemispherical sones at 1.5 m (5 ft) in a hemispherical free field calculated per ANSI/AMCA Standard 301. Values shown are for installation Type A: free inlet hemispherical sone levels.					
SPEED CONTROL VOLTS	STATIC PRESSURE																							
	0"			0.125"			0.25"			0.375"			0.5"			0.75"			1"					
	CFM	RPM	W	CFM	RPM	W	CFM	RPM	W	CFM	RPM	W	CFM	RPM	W	CFM	RPM	W	CFM	RPM	W			
10	768.38	1033.57	131	738.97	1087.61	136	712.32	1142.58	142	684.25	1199.26	147.75	650.58	1258.4	152.62	548.68	1387.24	154.58	437.71	1522.3	151.51			
5	630.69	886.02	75	523.28	884.89	61	369.75	886.39	45	-	-	-	-	-	-	-	-	-	-	-	-			
2.5	432.64	636.06	28	234.74	636.23	17	-	-	-	-	-	-	-	-	-	-	-	-	-	-	-			

The AMCA certified ratings seal applies for sound and air performance without the effect of appurtenances. Performance certified is for installation type "D" - Ducted Inlet, Ducted outlet

CBFI1500	9.1 sones @ nominal 1/8" static and 760 RPM																		The sound ratings shown are loudness values in hemispherical sones at 1.5 m (5 ft) in a hemispherical free field calculated per ANSI/AMCA Standard 301. Values shown are for installation Type A: free inlet hemispherical sone levels.					
SPEED CONTROL RPM	STATIC PRESSURE																							
	0"		0.125"		0.25"		0.375"		0.5"		0.75"		1"											
	CFM	W	CFM	W	CFM	W	CFM	W	CFM	W	CFM	W	CFM	W										
770	1211	281	1112	257	1011	231	885	202	735	170	364	107	-	-										
700	1111	217	997	192	875	165	721	137	533	108	-	-	-	-										
600	952	137	819	115	657	91	443	67	61	37	-	-	-	-										
500	793	79	629	60	391	40	-	-	-	-	-	-	-	-										
400	635	41	406	25	-	-	-	-	-	-	-	-	-	-										

The AMCA certified ratings seal applies for sound and air performance without the effect of appurtenances. Performance certified is for installation type "D" - Ducted Inlet, Ducted outlet



Canarm certifies that the Commercial Bathroom Exhaust Fans shown herein are licensed to bear the AMCA seal. The ratings shown are based on tests and procedures performed in accordance with AMCA Publication 211 and AMCA Publication 311 and comply with the requirements of the AMCA Certified Ratings Program. April 2026

