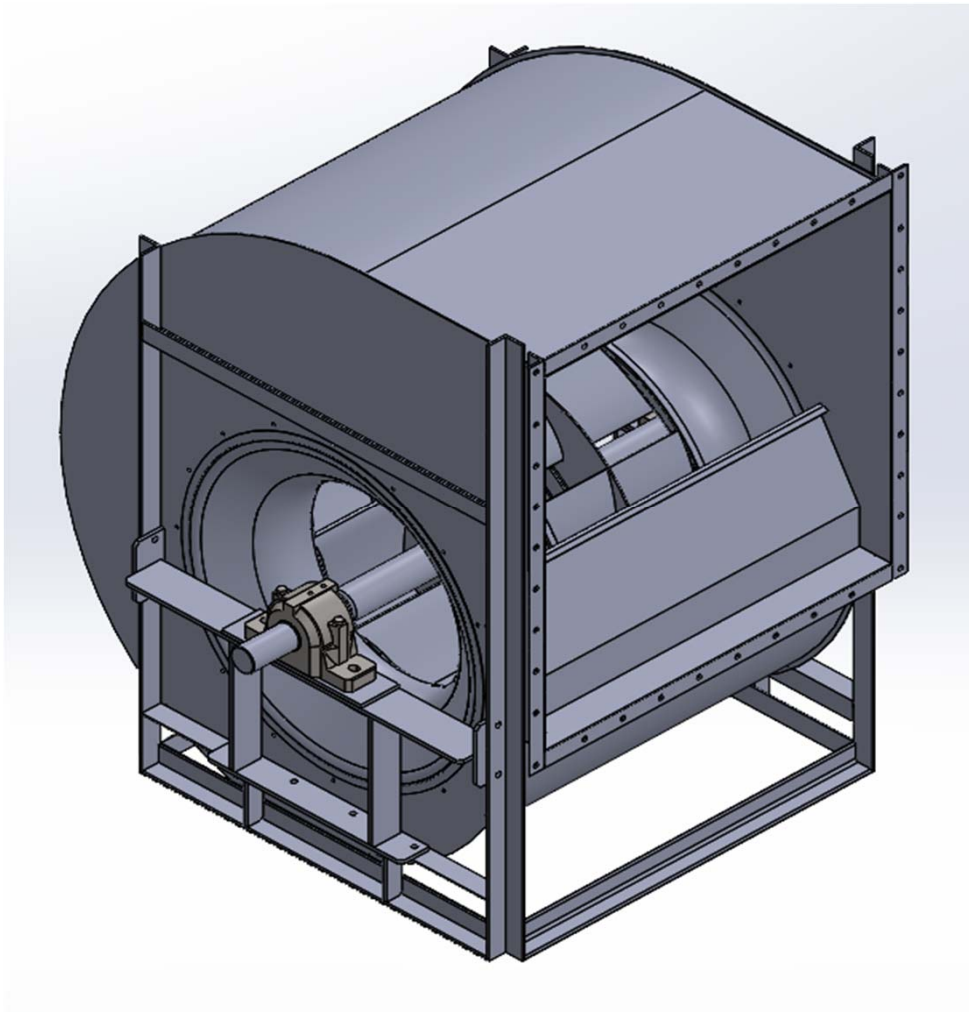


# ***KITURAMI BUMYANG***

## ***DESIGN 51 HIGH EFFICIENCY SERIES***

### ***DOUBLE WIDTH CENTRIFUGAL AIRFOIL FAN***



# ***KITURAMI BUMYANG DESIGN 51 HIGH EFFICIENCY Series***

DOUBLE WIDTH CENTRIFUGAL AIRFOIL FAN

## ◆ I N D E X ◆

- 제품 특징 ..... 3
- 제품 외형 ..... 4
- 제품 성능 ..... 5

Kiturami Bumyang Design 51 High Efficiency Series Centrifugal Airfoil Fan

Design 51HE DW Series 는 실용적이고 경제적인 디자인으로 설계되어 각종 공조 시스템에 적합한 모델 선정이 가능합니다. 로그 나선 기반의 하우징 구조와 공기 유동에 최적화된 유선형의 인렛콘, 휠콘은 각종 공조 시스템에서 우수한 성능을 보이며, 사용자가 요구하는 토출 방향과 구동 방식 채택이 가능하도록 맞춤형 설계가 가능합니다.

종래의 에어포일 송풍기는 직사각형 토출구 구조의 채택으로 인해 공조 시스템 적용 시 공간 활용성이 저하되는 단점이 발생하게 되었고, 이로 인한 공조 시스템의 비대화로 비용 상승을 야기하게 되었습니다.

Design 51HE DW Series 는 공간 활용성을 극대화 시키기 위한 정사각형 토출구를 가지는 하우징 구조와 더불어, 공력 효율 향상을 목표로 최적화 설계된 맞춤형 인렛콘을 통하여 우수한 공력 성능과 공간 활용성, 내구성을 보장 합니다.

Design 51HE DW Series 는 전반적인 HVAC 설비와 더불어 대부분의 산업용, 배기 System 에 매우 적절하고, 사용자의 요구 조건에 맞춰 제품을 선정할 수 있도록 넓은 사용범위를 가지고 있습니다.

Design 51HE DW Series 의 기본 구동 방식은 Arrgt-6 으로, 사용자가 요구하는 구동 방식에 따라 커플링 직결 및 벨트 구동 방식의 적용이 가능하며, 크기에 따른 #300 ~ #600 사이즈 및 회전수에 따른 Class 1, 2, 3 으로 구분되어 있습니다.

AMCA Certified Products



(주)귀뚜라미 범양냉방의 Design 51HE DW Series 송풍기는 AMCA Seal을 사용하도록 라이선스 되었음을 인증 합니다.

본 카탈로그의 성능 평가는 AMCA 211 규격과 동일한 성능 시험 및 절차에 의거하였으며, AMCA 인증 평가 프로그램의 요구사항을 준수합니다.

Kiturami Bumyang Air Conditioning Co., Ltd. certifies that the Design 51HE DW Series fans shown herein are licensed to bear the AMCA Seal.

The ratings shown are based on tests and procedures performed in accordance with AMCA Publication 211 and comply with the requirements of the AMCA Certified Ratings Program.



□ AMCA의 권위

- 1) AMCA 인증 프로그램에 합격하면 그 제품은 AMCA가 보증하는 인증품으로, AMCA SEAL을 부착하여 관리 및 판매할 수 있습니다.
- 2) AMCA 규격은 ASHRAE(미국냉난방공조협회) & ANSI & ISO 규격과 동등한 지위를 가지며, AMCA 에서 제정한 표준 규격은 상기 규격에서 동일한 내용으로 제정 됩니다.

\* AMCA STD. 210 → ASHRAE STD. 51 → ANSI STD. SR5 → ISO R541

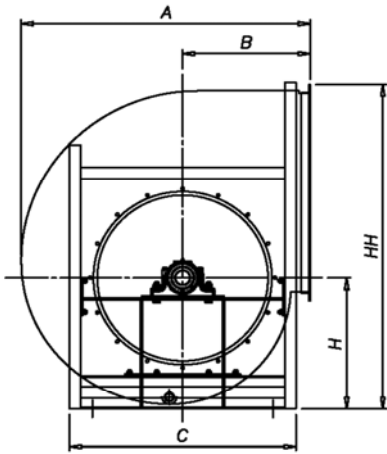
고효율 에너지기자재



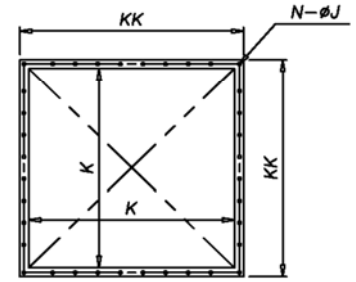
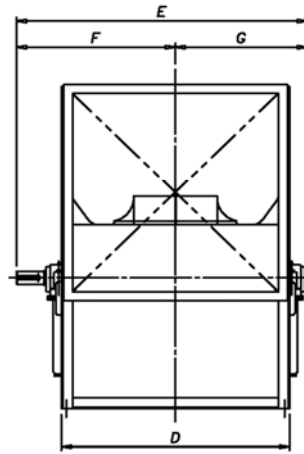
고효율기자재

(주)귀뚜라미 범양냉방의 Design 51HE DW Series 송풍기는 원심식 송풍기(날개형/양흡입형/벨트 구동식)의 고효율 에너지기자재 인증을 취득 하였습니다.

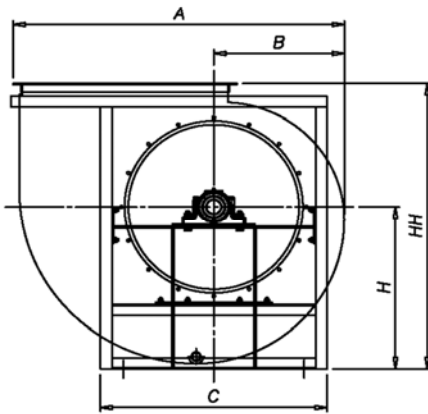
본 카탈로그에 기재된 제품은 지식경제부(고효율에너지기자재 보급 촉진에 관한 규정)에 의하여, 한국에너지관리공단에서 고효율 기자재로 인증 받았습니다.



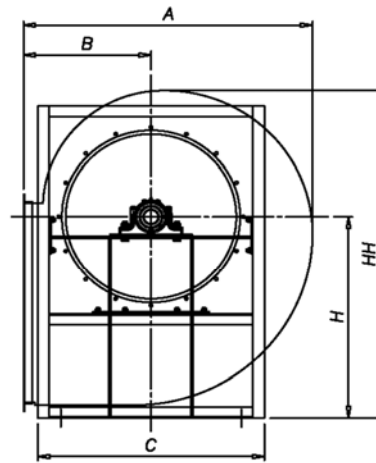
TH / CW



토출 플랜지



UB / CW



BH / CW

No.	규격	치수 (mm)																				
		A			B			C	D	E	F	G	J	K	KK	N	H			HH		
		TH	UB	BH	TH	UB	BH										TH	UB	BH	TH	UB	BH
1	D51HE DW 300	1280	1466	1280	565	578	565	1003	1011	1287	703.5	583.5	12	911	991	36	600	740	920	1488	1305	1498
2	D51HE DW 330	1403	1625	1403	609	643	609	1083	1112	1392	756	636	12	1012	1092	40	670	820	1020	1652	1429	1663
3	D51HE DW 365	1520	1781	1520	647	706	647	1168	1212	1492	806	686	12	1112	1192	44	730	900	1110	1805	1547	1816
4	D51HE DW 402	1676	1976	1676	711	780	711	1302	1381	1692	916	776	14	1231	1331	52	800	990	1220	1996	1701	2000
5	D51HE DW 445	1845	2176	1845	780	862	780	1403	1508	1819	979.5	839.5	14	1358	1458	56	890	1090	1340	2204	1870	2202
6	D51HE DW 490	2027	2399	2027	850	952	850	1549	1651	1976	1058	918	14	1501	1601	60	980	1200	1470	2427	2050	2422
7	D51HE DW 542	2230	2637	2230	933	1049	933	1708	1803	2128	1134	994	14	1653	1753	68	1070	1320	1610	2658	2253	2659
8	D51HE DW 600	2462	2912	2462	1028	1160	1028	1885	1979	2365	1262.5	1102.5	14	1829	1929	76	1180	1460	1780	2932	2488	2940

\* Note

- 구조물로 사용하지 마십시오.  
- Do not use it as a structure.
- 상기 치수는 제품 개선으로 사전 예고 없이 변경될 수 있으므로 승인 후 적용 바랍니다.  
- The above dimensions may be changed without prior notice due to product improvement, so please apply them after approval.
- L 치수는 전동기 사이즈에 따라 변동되는 치수이며, 제조사에 따라 상이할 수 있습니다.  
- The above "L" dimensions depend on the size of the motor, and it may also vary by manufacturer.
- 상기 내역 외 출력 적용은 제조사 승인 후 적용 바랍니다.  
- Please apply the output that is not detailed above after approval from the manufacturer.

D51HE DW 300 SIZE

OUTLET AREA 0.8299 m<sup>2</sup>

STATIC PRESS.	6 mmAq		13 mmAq		25 mmAq		38 mmAq		51 mmAq		64 mmAq		76 mmAq		88 mmAq		102 mmAq		113 mmAq		
	RPM	VOLUME (m <sup>3</sup> /min)	BHP (kW)	VOLUME (m <sup>3</sup> /min)	BHP (kW)	VOLUME (m <sup>3</sup> /min)	BHP (kW)	VOLUME (m <sup>3</sup> /min)	BHP (kW)	VOLUME (m <sup>3</sup> /min)	BHP (kW)	VOLUME (m <sup>3</sup> /min)	BHP (kW)	VOLUME (m <sup>3</sup> /min)	BHP (kW)	VOLUME (m <sup>3</sup> /min)	BHP (kW)	VOLUME (m <sup>3</sup> /min)	BHP (kW)	VOLUME (m <sup>3</sup> /min)	BHP (kW)
700	382.7	1.629	352.2	1.719	288.1	1.772	138.3	1.363													
800	444.6	2.396	418.7	2.516	368.8	2.626	298.7	2.616	94.30	1.644											
900	505.7	3.377	482.1	3.520	439.9	3.694	386.4	3.751	320.9	3.673	132.5	2.552									
1000	566.2	4.599	544.4	4.768	508.3	4.988	465.1	5.127	411.6	5.165	351.5	5.012	238.6	4.342							
1100	626.4	6.088	606.6	6.274	574.6	6.549	535.7	6.751	493.7	6.832	443.4	6.874	393.0	6.710	320.2	6.233					
1200	686.4	7.870	668.1	8.073	638.2	8.389	604.4	8.655	568.5	8.823	527.7	8.876	484.4	8.925	438.4	8.778	377.5	8.310	196.0	6.326	
1300	745.9	9.972	729.2	10.19	701.0	10.55	671.7	10.88	638.4	11.12	605.3	11.26	569.0	11.29	529.0	11.35	479.5	11.19	438.5	10.85	
1400	805.3	12.42	790.0	12.66	763.2	13.07	736.4	13.43	706.9	13.73	676.0	13.95	646.9	14.07	613.2	14.10	569.9	14.18	533.8	14.10	
1500	864.5	15.24	850.4	15.50	825.4	15.94	799.8	16.35	774.1	16.72	745.2	17.00	718.8	17.19	691.1	17.31	654.4	17.34	622.5	17.42	
1600	923.6	18.46	910.6	18.75	887.2	19.21	862.6	19.68	839.2	20.09	813.3	20.43	788.3	20.71	763.5	20.88	732.6	21.01	705.5	21.04	
1700	982.6	22.11	970.6	22.42	948.5	22.91	924.8	23.44	902.8	23.88	880.2	24.30	856.8	24.60	833.3	24.88	806.1	25.08	783.4	25.20	
1800	1042	26.21	1030	26.54	1010	27.06	987.0	27.63	965.7	28.12	944.9	28.59	924.2	28.96	902.0	29.27	876.2	29.58	856.0	29.75	
1900	1101	30.79	1090	31.14	1070	31.70	1049	32.29	1028	32.85	1009	33.35	990.3	33.80	969.7	34.15	945.2	34.54	926.0	34.78	
2000	1159	35.88	1149	36.25	1131	36.84	1111	37.47	1090	38.10	1072	38.62	1054	39.10	1037	39.56	1013	39.96	995	40.28	
2100	1218	41.50	1209	41.89	1191	42.52	1172	43.18	1153	43.84	1134	44.43	1118	44.93	1101	45.44	1080	45.94	1063	46.28	
2200	1277	47.68	1268	48.09	1251	48.75	1233	49.45	1215	50.14	1196	50.81	1181	51.34	1165	51.87	1147	52.48	1130	52.86	
2300	1336	54.45	1327	54.87	1312	55.58	1294	56.30	1276	57.03	1259	57.75	1243	58.34	1228	58.89	1211	59.53	1197	60.04	
2400	1394	61.83	1386	62.27	1371	63.02	1354	63.77	1338	64.53	1321	65.28	1305	65.96	1291	66.53	1274	67.21	1261	67.73	
2500	1453	69.85	1445	70.31	1431	71.10	1415	71.89	1399	72.67	1382	73.46	1368	74.19	1353	74.83	1337	75.53	1324	76.08	

STATIC PRESS.	127 mmAq		140 mmAq		152 mmAq		165 mmAq		178 mmAq		191 mmAq		203 mmAq		216 mmAq		229 mmAq		254 mmAq			
	RPM	VOLUME (m <sup>3</sup> /min)	BHP (kW)	VOLUME (m <sup>3</sup> /min)	BHP (kW)	VOLUME (m <sup>3</sup> /min)	BHP (kW)	VOLUME (m <sup>3</sup> /min)	BHP (kW)	VOLUME (m <sup>3</sup> /min)	BHP (kW)	VOLUME (m <sup>3</sup> /min)	BHP (kW)	VOLUME (m <sup>3</sup> /min)	BHP (kW)	VOLUME (m <sup>3</sup> /min)	BHP (kW)	VOLUME (m <sup>3</sup> /min)	BHP (kW)	VOLUME (m <sup>3</sup> /min)	BHP (kW)	
1300	331.1	9.806																				
1400	486.7	13.70	430.1	13.09	276.6	10.90																
1500	580.2	17.39	540.1	17.06	500.1	16.59	425.4	15.67	216.3	11.71												
1600	668.3	21.13	631.8	21.13	597.3	20.93	559.9	20.58	515.3	19.87	422.5	18.53	217.7	13.89								
1700	750.9	25.23	718.7	25.32	687.6	25.38	652.5	25.29	617.3	24.92	580.4	24.37	540.6	23.72	445.0	22.15	235.9	16.79				
1800	828.7	29.91	800.3	29.95	772.9	30.01	741.5	30.12	708.7	30.08	675.5	29.84	644.4	29.42	609.2	28.84	567.9	28.08	298.2	21.49		
1900	901.6	35.01	877.9	35.17	853.0	35.21	825.8	35.26	796.1	35.37	765.8	35.42	736.8	35.34	705.3	34.99	673.0	34.47	602.9	33.09		
2000	971.8	40.60	950.3	40.82	930.3	41.01	904.7	41.05	879.1	41.09	851.5	41.20	825.5	41.31	796.1	41.29	766.2	41.16	707.8	40.20		
2100	1041	46.71	1020	47.00	1001	47.21	981.0	47.44	957.2	47.51	932.9	47.55	909.7	47.62	882.9	47.75	855.9	47.86	801.2	47.59		
2200	1109	53.31	1090	53.72	1071	54.01	1052	54.25	1032	54.49	1011	54.61	989.1	54.65	965.9	54.70	940.8	54.81	891.1	55.01		
2300	1177	60.52	1158	60.95	1140	61.35	1122	61.69	1103	61.94	1084	62.19	1067	62.43	1044	62.43	1022	62.48	976.6	62.67		
2400	1243	68.36	1225	68.82	1209	69.24	1191	69.69	1173	70.06	1155	70.32	1138	70.56	1121	70.83	1100	70.91	1059	71.00		
2500	1308	76.78	1292	77.35	1276	77.79	1259	78.26	1242	78.73	1225	79.14	1209	79.39	1191	79.67	1174	79.94	1137	80.17		

STATIC PRESS.	279 mmAq		305 mmAq		330 mmAq		356 mmAq		381 mmAq		406 mmAq		432 mmAq		457 mmAq		483 mmAq		508 mmAq			
	RPM	VOLUME (m <sup>3</sup> /min)	BHP (kW)	VOLUME (m <sup>3</sup> /min)	BHP (kW)	VOLUME (m <sup>3</sup> /min)	BHP (kW)	VOLUME (m <sup>3</sup> /min)	BHP (kW)	VOLUME (m <sup>3</sup> /min)	BHP (kW)	VOLUME (m <sup>3</sup> /min)	BHP (kW)	VOLUME (m <sup>3</sup> /min)	BHP (kW)	VOLUME (m <sup>3</sup> /min)	BHP (kW)	VOLUME (m <sup>3</sup> /min)	BHP (kW)	VOLUME (m <sup>3</sup> /min)	BHP (kW)	
1900	391.4	27.76																				
2000	641.6	38.75	466.4	34.34																		
2100	745.6	46.59	680.8	45.04	546.5	41.67																
2200	838.9	54.71	783.7	53.63	725.5	52.13	617.9	49.28	343.1	38.20												
2300	928.8	62.84	876.9	62.51	826.4	61.47	770.2	59.91	689.7	57.55	511.6	51.00										
2400	1015	71.24	966.9	71.39	919.0	71.11	869.0	70.04	818.7	68.55	759.8	66.64	617.4	61.93	321.7	46.60						
2500	1097	80.26	1053	80.54	1009	80.70	961.1	80.46	915.1	79.41	867.2	77.94	811.0	76.01	715.6	72.76	515.4	63.25				

- Class Grade : Class 1  / Class 2  / Class 3
- Performance certified is for installation type-B (Free inlet, Ducted outlet)
- Performance ratings do not include the effects of appurtenances (accessories)
- Power rating(kW) does not include transmission losses

D51HE DW 330 SIZE

OUTLET AREA 1.0241 m<sup>2</sup>

STATIC PRESS.	6 mmAq		13 mmAq		25 mmAq		38 mmAq		51 mmAq		64 mmAq		76 mmAq		88 mmAq		102 mmAq		113 mmAq		
	RPM	VOLUME (m <sup>3</sup> /min)	BHP (kW)	VOLUME (m <sup>3</sup> /min)	BHP (kW)	VOLUME (m <sup>3</sup> /min)	BHP (kW)	VOLUME (m <sup>3</sup> /min)	BHP (kW)	VOLUME (m <sup>3</sup> /min)	BHP (kW)	VOLUME (m <sup>3</sup> /min)	BHP (kW)	VOLUME (m <sup>3</sup> /min)	BHP (kW)	VOLUME (m <sup>3</sup> /min)	BHP (kW)	VOLUME (m <sup>3</sup> /min)	BHP (kW)	VOLUME (m <sup>3</sup> /min)	BHP (kW)
700	532.6	2.731	499.9	2.873	434.6	2.986	343.6	2.934													
800	616.6	4.028	587.2	4.201	534.3	4.407	466.3	4.475	383.5	4.343											
900	699.8	5.688	672.9	5.896	628.3	6.169	575.0	6.341	509.0	6.388	434.7	6.201	296.4	5.384							
1000	782.5	7.755	758.2	7.988	719.0	8.334	671.7	8.596	621.0	8.706	560.5	8.768	499.1	8.607	425.3	8.115					
1100	864.7	10.28	842.6	10.53	806.2	10.93	765.7	11.28	722.1	11.51	674.0	11.59	622.9	11.66	567.5	11.56	497.7	11.05	373.9	9.992	
1200	946.4	13.29	926.4	13.58	892.2	14.04	857.5	14.47	817.5	14.78	777.7	14.98	735.9	15.05	689.3	15.12	630.7	15.08	583.1	14.73	
1300	1028	16.85	1010	17.16	977.6	17.68	945.2	18.16	910.8	18.56	873.9	18.88	840.0	19.06	801.2	19.13	751.5	19.22	709.6	19.23	
1400	1109	21.00	1092	21.34	1063	21.90	1032	22.45	1002	22.94	968.1	23.32	936.4	23.61	905.0	23.81	863.0	23.90	827.6	23.95	
1500	1190	25.78	1175	26.15	1147	26.75	1117	27.38	1090	27.91	1061	28.40	1031	28.76	1001.5	29.05	967.2	29.30	936.6	29.38	
1600	1271	31.24	1257	31.64	1231	32.28	1203	32.97	1176	33.56	1150	34.13	1124	34.57	1096	34.95	1064	35.30	1039	35.50	
1700	1352	37.42	1339	37.85	1315	38.54	1288	39.27	1262	39.95	1238	40.56	1215	41.12	1189	41.54	1159	42.01	1135	42.29	
1800	1433	44.37	1420	44.83	1398	45.56	1373	46.34	1348	47.12	1324	47.76	1303	48.35	1281	48.92	1252	49.43	1230	49.82	
1900	1514	52.14	1502	52.62	1481	53.41	1457	54.23	1433	55.05	1410	55.79	1390	56.42	1370	57.04	1345	57.69	1323	58.10	
2000	1594	60.77	1583	61.27	1563	62.11	1541	62.97	1518	63.84	1496	64.70	1476	65.35	1457	66.01	1435	66.78	1416	67.28	
2100	1675	70.30	1664	70.83	1646	71.72	1624	72.63	1603	73.54	1581	74.44	1562	75.21	1544	75.90	1522	76.70	1506	77.34	
2200	1756	80.78	1745	81.34	1728	82.29	1707	83.24	1687	84.19	1666	85.14	1647	86.01	1630	86.75	1609	87.59	1593	88.25	
2300	1836	92.25	1826	92.84	1810	93.84	1790	94.84	1771	95.83	1751	96.83	1733	97.74	1715	98.60	1696	99.49	1681	100.2	

STATIC PRESS.	127 mmAq		140 mmAq		152 mmAq		165 mmAq		178 mmAq		191 mmAq		203 mmAq		216 mmAq		229 mmAq		254 mmAq		
	RPM	VOLUME (m <sup>3</sup> /min)	BHP (kW)	VOLUME (m <sup>3</sup> /min)	BHP (kW)	VOLUME (m <sup>3</sup> /min)	BHP (kW)	VOLUME (m <sup>3</sup> /min)	BHP (kW)	VOLUME (m <sup>3</sup> /min)	BHP (kW)	VOLUME (m <sup>3</sup> /min)	BHP (kW)	VOLUME (m <sup>3</sup> /min)	BHP (kW)	VOLUME (m <sup>3</sup> /min)	BHP (kW)	VOLUME (m <sup>3</sup> /min)	BHP (kW)	VOLUME (m <sup>3</sup> /min)	BHP (kW)
1200	507.2	13.99	258.3	10.54																	
1300	654.5	18.95	600.3	18.38	518.1	17.44	262.0	13.03													
1400	779.0	24.05	731.6	23.91	687.2	23.48	634.5	22.80	541.1	21.56	290.8	16.48									
1500	895.4	29.43	853.6	29.56	813.5	29.54	769.2	29.26	723.7	28.69	702.4	27.93	592.0	26.70	394.8	22.45					
1600	1003	35.65	967.8	35.69	932.5	35.80	893.1	35.91	851.6	35.81	810.0	35.38	770.4	34.80	723.2	33.99	648.5	32.69			
1700	1105	42.57	1075	42.75	1044	42.79	1010	42.86	972.6	43.01	934.7	43.03	898.6	42.94	859.5	42.43	819.0	41.75	725.7	39.92	
1800	1201	50.21	1175	50.48	1150	50.73	1118	50.78	1087	50.83	1053	50.95	1021	51.09	984.4	51.06	947.5	50.91	875.4	49.73	
1900	1296	58.64	1271	59.02	1248	59.29	1223	59.57	1194	59.69	1164	59.75	1136	59.80	1103	59.97	1070	60.13	1003	59.92	
2000	1390	67.84	1366	68.36	1343	68.77	1320	69.07	1296	69.37	1270	69.60	1244	69.65	1216	69.70	1186	69.81	1126	70.13	
2100	1482	77.99	1459	78.53	1438	79.23	1415	79.54	1392	79.86	1370	80.18	1349	80.47	1323	80.59	1296	80.65	1242	80.83	
2200	1573	89.10	1552	89.70	1531	90.22	1510	90.80	1488	91.37	1466	91.71	1446	92.02	1424	92.35	1402	92.62	1352	92.74	
2300	1661	101.1	1643	101.9	1624	102.4	1603	103.0	1582	103.6	1561	104.2	1542	104.6	1521	105.0	1500	105.3	1458	105.9	

STATIC PRESS.	279 mmAq		305 mmAq		330 mmAq		356 mmAq		381 mmAq		406 mmAq		432 mmAq		457 mmAq		483 mmAq		508 mmAq		
	RPM	VOLUME (m <sup>3</sup> /min)	BHP (kW)	VOLUME (m <sup>3</sup> /min)	BHP (kW)	VOLUME (m <sup>3</sup> /min)	BHP (kW)	VOLUME (m <sup>3</sup> /min)	BHP (kW)	VOLUME (m <sup>3</sup> /min)	BHP (kW)	VOLUME (m <sup>3</sup> /min)	BHP (kW)	VOLUME (m <sup>3</sup> /min)	BHP (kW)	VOLUME (m <sup>3</sup> /min)	BHP (kW)	VOLUME (m <sup>3</sup> /min)	BHP (kW)	VOLUME (m <sup>3</sup> /min)	BHP (kW)
1700	407.9	31.41																			
1800	793.7	48.33	579.4	42.58																	
1900	935.3	58.74	857.4	56.89	717.3	53.46	265.3	35.31													
2000	1062	69.93	996	68.80	927.9	67.06	823.1	64.19	582.3	55.64											
2100	1185	81.17	1122	80.98	1061	79.96	995	78.37	922.2	76.02	766.2	71.25	393.4	53.33							
2200	1301	92.94	1244	93.31	1186	93.16	1126	92.24	1066	90.67	1001	88.60	897.6	85.18	693.1	76.90					
2300	1411	106.0	1360	106.2	1307	106.6	1250	106.5	1195	105.8	1139	104.4	1078	102.4	1010	99.88	873.1	95.04	602.4	80.74	

- Class Grade : Class 1  / Class 2  / Class 3

- Performance certified is for installation type-B (Free inlet, Ducted outlet)

- Performance ratings do not include the effects of appurtenances (accessories)

- Power rating(kW) does not include transmission losses

D51HE DW 365 SIZE

OUTLET AREA 1.2365 m<sup>2</sup>

STATIC PRESS.	6 mmAq		13 mmAq		25 mmAq		38 mmAq		51 mmAq		64 mmAq		76 mmAq		88 mmAq		102 mmAq		113 mmAq	
	VOLUME (m <sup>3</sup> /min)	BHP (kW)	VOLUME (m <sup>3</sup> /min)	BHP (kW)	VOLUME (m <sup>3</sup> /min)	BHP (kW)	VOLUME (m <sup>3</sup> /min)	BHP (kW)	VOLUME (m <sup>3</sup> /min)	BHP (kW)	VOLUME (m <sup>3</sup> /min)	BHP (kW)	VOLUME (m <sup>3</sup> /min)	BHP (kW)	VOLUME (m <sup>3</sup> /min)	BHP (kW)	VOLUME (m <sup>3</sup> /min)	BHP (kW)	VOLUME (m <sup>3</sup> /min)	BHP (kW)
700	712.7	4.331	676.1	4.527	608.7	4.743	518.8	4.810	408.3	4.507										
800	823.3	6.400	790.2	6.642	734.4	6.955	666.9	7.127	583.3	7.173	489.5	6.852	174.0	4.485						
900	933.0	9.049	903.3	9.327	855.6	9.736	797.5	10.04	734.7	10.16	659.7	10.22	584.3	9.97	474.0	9.246				
1000	1042	12.35	1015	12.66	971.3	13.14	922.3	13.56	869.7	13.83	811.4	13.93	749.5	14.02	682.5	13.88	597.9	13.26	442.4	11.90
1100	1150	16.37	1126	16.72	1085	17.28	1044	17.80	996.0	18.19	948.2	18.45	898.8	18.54	843.5	18.62	773.7	18.61	717.0	18.23
1200	1258	21.19	1237	21.57	1198	22.21	1160	22.80	1119	23.31	1075	23.72	1035	23.94	990.3	24.06	932.3	24.14	883.2	24.22
1300	1366	26.88	1346	27.30	1311	27.99	1274	28.67	1239	29.29	1200	29.78	1162	30.18	1125	30.42	1078	30.59	1037	30.63
1400	1473	33.50	1455	33.97	1423	34.71	1387	35.50	1355	36.16	1322	36.81	1287	37.26	1252	37.69	1212	37.99	1179	38.18
1500	1581	41.15	1564	41.65	1534	42.44	1501	43.30	1469	44.07	1439	44.78	1409	45.38	1377	45.85	1339	46.38	1309	46.63
1600	1688	49.87	1672	50.41	1644	51.27	1613	52.19	1583	53.08	1554	53.83	1528	54.53	1499	55.13	1464	55.73	1436	56.20
1700	1795	59.76	1780	60.33	1754	61.25	1725	62.23	1696	63.20	1668	64.06	1643	64.80	1619	65.54	1587	66.25	1560	66.75
1800	1902	70.87	1888	71.48	1864	72.47	1836	73.50	1809	74.53	1781	75.54	1758	76.32	1735	77.11	1707	78.02	1683	78.58
1900	2009	83.29	1996	83.93	1973	84.99	1947	86.08	1921	87.17	1895	88.26	1872	89.16	1850	89.99	1824	90.96	1803	91.72
2000	2116	97.08	2103	97.75	2082	98.90	2057	100.0	2032	101.2	2008	102.3	1985	103.4	1964	104.3	1939	105.3	1920	106.1
2100	2222	112.3	2211	113.0	2191	114.2	2167	115.4	2144	116.7	2120	117.9	2098	119.0	2077	120.0	2053	121.1	2035	121.9

STATIC PRESS.	127 mmAq		140 mmAq		152 mmAq		165 mmAq		178 mmAq		191 mmAq		203 mmAq		216 mmAq		229 mmAq		254 mmAq	
	VOLUME (m <sup>3</sup> /min)	BHP (kW)	VOLUME (m <sup>3</sup> /min)	BHP (kW)	VOLUME (m <sup>3</sup> /min)	BHP (kW)	VOLUME (m <sup>3</sup> /min)	BHP (kW)	VOLUME (m <sup>3</sup> /min)	BHP (kW)	VOLUME (m <sup>3</sup> /min)	BHP (kW)	VOLUME (m <sup>3</sup> /min)	BHP (kW)	VOLUME (m <sup>3</sup> /min)	BHP (kW)	VOLUME (m <sup>3</sup> /min)	BHP (kW)	VOLUME (m <sup>3</sup> /min)	BHP (kW)
1100	634.9	17.42	391.2	14.28																
1200	817.7	23.98	755.0	23.36	687.6	22.56	479.7	19.54												
1300	980.2	30.78	927.3	30.93	873.1	30.37	814.8	29.66	747.0	28.71	574.5	26.12								
1400	1131	38.24	1083	38.36	1038	38.48	985.6	38.37	933.3	37.85	879.0	37.07	821.6	36.14	703.7	34.27	424.2	27.49		
1500	1272	46.95	1230	47.01	1191	47.06	1145	47.23	1099	47.30	1050	47.17	1005	46.62	954.6	45.82	899.1	44.81	668.0	40.29
1600	1400	56.56	1368	56.88	1334	57.02	1295	57.08	1254	57.19	1211	57.37	1170	57.40	1125	57.27	1079	56.67	987.7	55.01
1700	1527	67.38	1496	67.75	1468	68.06	1436	68.36	1399	68.42	1362	68.49	1326	68.62	1286	68.81	1244	68.85	1161	68.21
1800	1651	79.25	1622	79.87	1595	80.28	1566	80.64	1537	81.00	1504	81.18	1472	81.24	1437	81.31	1400	81.48	1326	81.76
1900	1774	92.47	1746	93.13	1721	93.73	1693	94.30	1665	94.67	1638	95.05	1612	95.40	1580	95.49	1547	95.56	1481	95.81
2000	1895	107.1	1869	107.8	1845	108.5	1818	109.1	1792	109.8	1766	110.2	1741	110.6	1715	111.0	1688	111.3	1628	111.5
2100	2012	123.0	1990	124.0	1967	125.7	1942	125.4	1917	126.1	1892	126.9	1868	127.4	1843	127.8	1818	128.2	1769	128.9

STATIC PRESS.	279 mmAq		305 mmAq		330 mmAq		356 mmAq		381 mmAq		406 mmAq		432 mmAq		457 mmAq		483 mmAq		508 mmAq	
	VOLUME (m <sup>3</sup> /min)	BHP (kW)	VOLUME (m <sup>3</sup> /min)	BHP (kW)	VOLUME (m <sup>3</sup> /min)	BHP (kW)	VOLUME (m <sup>3</sup> /min)	BHP (kW)	VOLUME (m <sup>3</sup> /min)	BHP (kW)	VOLUME (m <sup>3</sup> /min)	BHP (kW)	VOLUME (m <sup>3</sup> /min)	BHP (kW)	VOLUME (m <sup>3</sup> /min)	BHP (kW)	VOLUME (m <sup>3</sup> /min)	BHP (kW)	VOLUME (m <sup>3</sup> /min)	BHP (kW)
1600	834.3	51.78																		
1700	1076	66.58	974.3	64.14	698.8	56.31														
1800	1248	81.29	1165	79.66	1078	77.41	914.3	73.09	495.6	56.04										
1900	1411	96.20	1334	95.89	1260	94.49	1180	92.31	1089	89.54	863.3	82.47								
2000	1565	111.7	1496	112.2	1427	111.9	1354	110.8	1282	108.9	1203	106.4	1073	102.1	818.8	91.50				
2100	1711	129.0	1650	129.3	1587	129.7	1519	129.7	1452	129.0	1385	127.4	1312	124.9	1232	121.9	1078	116.5	789.8	101.8

- Class Grade : Class 1  / Class 2  / Class 3
- Performance certified is for installation type-B (Free inlet, Ducted outlet)
- Performance ratings do not include the effects of appurtenances (accessories)
- Power rating(kW) does not include transmission losses

D51HE DW 402 SIZE

OUTLET AREA 1.5154 m<sup>2</sup>

STATIC PRESS.	6 mmAq		13 mmAq		25 mmAq		38 mmAq		51 mmAq		64 mmAq		76 mmAq		89 mmAq		102 mmAq		114 mmAq		
	RPM	VOLUME (m <sup>3</sup> /min)	BHP (kW)	VOLUME (m <sup>3</sup> /min)	BHP (kW)	VOLUME (m <sup>3</sup> /min)	BHP (kW)	VOLUME (m <sup>3</sup> /min)	BHP (kW)	VOLUME (m <sup>3</sup> /min)	BHP (kW)	VOLUME (m <sup>3</sup> /min)	BHP (kW)	VOLUME (m <sup>3</sup> /min)	BHP (kW)	VOLUME (m <sup>3</sup> /min)	BHP (kW)	VOLUME (m <sup>3</sup> /min)	BHP (kW)	VOLUME (m <sup>3</sup> /min)	BHP (kW)
700	975.2	7.145	933.6	7.426	861.9	7.787	773.9	7.946	664.6	7.970	530.0	7.377									
800	1124	10.58	1087	10.91	1028	11.40	955.1	11.74	875.3	11.87	779.8	11.92	685.0	11.52	499.5	10.284					
900	1272	14.97	1239	15.35	1185	15.94	1125	16.44	1060	16.77	988.0	16.89	911.6	17.00	829.0	16.86	723.6	16.03	513.5	14.05	
1000	1419	20.45	1390	20.87	1340	21.58	1289	22.22	1231	22.70	1173	23.03	1114	23.16	1047	23.25	962.4	23.26	893.8	22.86	
1100	1565	27.13	1539	27.60	1493	28.39	1446	29.14	1398	29.79	1345	30.31	1296	30.61	1244	30.81	1176	30.88	1117	31.03	
1200	1711	35.13	1688	35.66	1646	36.52	1601	37.40	1559	38.17	1513	38.82	1468	39.34	1423	39.69	1370	39.99	1321	40.04	
1300	1857	44.58	1836	45.16	1797	46.10	1755	47.11	1715	47.96	1677	48.80	1636	49.40	1595	49.96	1546	50.42	1509	50.72	
1400	2003	55.59	1983	56.23	1947	57.24	1908	58.33	1870	59.34	1834	60.24	1801	61.07	1762	61.69	1717	62.40	1682	62.82	
1500	2148	68.28	2130	68.97	2097	70.07	2060	71.24	2024	72.40	1989	73.39	1958	74.28	1927	75.17	1885	75.93	1852	76.52	
1600	2293	82.78	2276	83.52	2246	84.71	2211	85.95	2177	87.20	2144	88.37	2114	89.32	2085	90.27	2051	91.34	2020	91.97	
1700	2438	99.21	2422	100.0	2394	101.3	2362	102.6	2329	103.9	2297	105.2	2269	106.3	2241	107.3	2209	108.5	2184	109.4	
1800	2583	117.7	2568	118.5	2542	119.9	2511	121.3	2481	122.7	2450	124.1	2422	125.4	2396	126.4	2366	127.7	2342	128.7	

STATIC PRESS.	127 mmAq		140 mmAq		152 mmAq		165 mmAq		178 mmAq		191 mmAq		203 mmAq		216 mmAq		229 mmAq		254 mmAq			
	RPM	VOLUME (m <sup>3</sup> /min)	BHP (kW)	VOLUME (m <sup>3</sup> /min)	BHP (kW)	VOLUME (m <sup>3</sup> /min)	BHP (kW)	VOLUME (m <sup>3</sup> /min)	BHP (kW)	VOLUME (m <sup>3</sup> /min)	BHP (kW)	VOLUME (m <sup>3</sup> /min)	BHP (kW)	VOLUME (m <sup>3</sup> /min)	BHP (kW)	VOLUME (m <sup>3</sup> /min)	BHP (kW)	VOLUME (m <sup>3</sup> /min)	BHP (kW)	VOLUME (m <sup>3</sup> /min)	BHP (kW)	
1000	795.7	21.90	556.1	19.03																		
1100	1038	30.88	963.8	30.20	887.1	29.29	716.4	27.16														
1200	1255	40.18	1190	40.26	1128	40.05	1060	39.33	986.4	38.31	867.7	36.59	622.8	31.84								
1300	1454	50.87	1401	50.94	1346	51.13	1286	51.18	1224	50.94	1162	50.22	1102	49.26	1026	47.96	873.0	45.36				
1400	1638	63.23	1593	63.50	1548	63.57	1497	63.67	1443	63.88	1387	63.93	1334	63.79	1276	63.07	1216	62.08	1084	59.47		
1500	1811	77.18	1772	77.59	1736	77.96	1692	78.13	1646	78.20	1598	78.34	1551	78.55	1499	78.67	1446	78.51	1342	77.17		
1600	1980	92.78	1944	93.52	1910	93.92	1874	94.35	1837	94.76	1794	94.84	1754	94.91	1709	95.05	1662	95.29	1567	95.37		
1700	2147	110.3	2113	111.1	2081	111.8	2047	112.4	2013	112.9	1979	113.3	1946	113.7	1905	113.8	1864	113.8	1781	114.2		
1800	2312	129.9	2280	130.8	2250	131.5	2217	132.4	2185	133.2	2152	133.7	2123	134.1	2090	134.6	2056	134.9	1982	135.1		

STATIC PRESS.	279 mmAq		305 mmAq		330 mmAq		356 mmAq		381 mmAq		406 mmAq		432 mmAq		457 mmAq		483 mmAq		508 mmAq			
	RPM	VOLUME (m <sup>3</sup> /min)	BHP (kW)	VOLUME (m <sup>3</sup> /min)	BHP (kW)	VOLUME (m <sup>3</sup> /min)	BHP (kW)	VOLUME (m <sup>3</sup> /min)	BHP (kW)	VOLUME (m <sup>3</sup> /min)	BHP (kW)	VOLUME (m <sup>3</sup> /min)	BHP (kW)	VOLUME (m <sup>3</sup> /min)	BHP (kW)	VOLUME (m <sup>3</sup> /min)	BHP (kW)	VOLUME (m <sup>3</sup> /min)	BHP (kW)	VOLUME (m <sup>3</sup> /min)	BHP (kW)	
1400	635.4	47.66																				
1500	1228	74.71	1005	69.62																		
1600	1470	94.35	1366	92.09	1250	89.06	933.6	79.85														
1700	1694	114.5	1599	113.9	1506	111.9	1403	109.1	1252	104.7	917.9	92.17										
1800	1905	135.5	1820	136.0	1734	135.7	1644	134.1	1555	131.7	1456	128.5	1281	122.8	928.3	107.1						

- Class Grade : Class 1  / Class 2  / Class 3
- Performance certified is for installation type-B (Free inlet, Ducted outlet)
- Performance ratings do not include the effects of appurtenances (accessories)
- Power rating(kW) does not include transmission losses



D51HE DW 445 SIZE

OUTLET AREA 1.8442 m<sup>2</sup>

STATIC PRESS.	6 mmAq		13 mmAq		25 mmAq		38 mmAq		51 mmAq		64 mmAq		76 mmAq		88 mmAq		102 mmAq		113 mmAq	
RPM	VOLUME (m <sup>3</sup> /min)	BHP (kW)	VOLUME (m <sup>3</sup> /min)	BHP (kW)	VOLUME (m <sup>3</sup> /min)	BHP (kW)	VOLUME (m <sup>3</sup> /min)	BHP (kW)	VOLUME (m <sup>3</sup> /min)	BHP (kW)	VOLUME (m <sup>3</sup> /min)	BHP (kW)	VOLUME (m <sup>3</sup> /min)	BHP (kW)	VOLUME (m <sup>3</sup> /min)	BHP (kW)	VOLUME (m <sup>3</sup> /min)	BHP (kW)	VOLUME (m <sup>3</sup> /min)	BHP (kW)
700	1317	11.59	1271	11.98	1195	12.53	1103	12.89	997.1	13.00	872.7	12.94	743.9	12.24						
800	1516	17.18	1475	17.63	1409	18.33	1333	18.91	1252	19.27	1160	19.38	1062	19.47	959.4	19.11	805.8	17.92		
900	1713	24.35	1678	24.86	1616	25.70	1554	26.47	1483	27.05	1412	27.43	1338	27.57	1255	27.69	1151	27.67	1066	27.08
1000	1910	33.27	1878	33.85	1822	34.82	1765	35.73	1707	36.53	1643	37.16	1584	37.54	1521	37.79	1438	37.87	1367	38.05
1100	2106	44.16	2078	44.82	2027	45.88	1973	46.97	1922	47.92	1868	48.74	1814	49.38	1760	49.84	1697	50.27	1638	50.33
1200	2301	57.22	2276	57.95	2230	59.10	2179	60.35	2132	61.44	2085	62.47	2038	63.27	1989	63.97	1931	64.62	1886	64.99
1300	2496	72.63	2473	73.43	2431	74.69	2384	76.05	2338	77.35	2296	78.47	2256	79.50	2213	80.37	2159	81.25	2117	81.91
1400	2691	90.59	2670	91.45	2631	92.84	2588	94.30	2545	95.76	2503	97.06	2467	98.17	2430	99.28	2383	100.4	2344	101.6
1500	2886	111.3	2866	112.2	2831	113.7	2790	115.3	2750	116.9	2709	118.4	2675	119.6	2641	120.8	2601	122.2	2567	123.2
1600	3081	135.0	3062	136.0	3029	137.6	2991	139.3	2954	140.9	2916	142.6	2882	144.1	2849	145.3	2812	146.8	2782	148.0
1700	3275	161.8	3258	162.8	3227	164.6	3192	166.4	3156	168.2	3121	169.9	3088	171.6	3056	173.1	3021	174.6	2993	175.9

STATIC PRESS.	127 mmAq		140 mmAq		152 mmAq		165 mmAq		178 mmAq		191 mmAq		203 mmAq		216 mmAq		229 mmAq		254 mmAq	
RPM	VOLUME (m <sup>3</sup> /min)	BHP (kW)	VOLUME (m <sup>3</sup> /min)	BHP (kW)	VOLUME (m <sup>3</sup> /min)	BHP (kW)	VOLUME (m <sup>3</sup> /min)	BHP (kW)	VOLUME (m <sup>3</sup> /min)	BHP (kW)	VOLUME (m <sup>3</sup> /min)	BHP (kW)	VOLUME (m <sup>3</sup> /min)	BHP (kW)	VOLUME (m <sup>3</sup> /min)	BHP (kW)	VOLUME (m <sup>3</sup> /min)	BHP (kW)	VOLUME (m <sup>3</sup> /min)	BHP (kW)
900	943.5	25.88	565.9	20.96																
1000	1272	37.92	1181	37.11	1089	36.02	897.4	33.65												
1100	1561	50.47	1484	50.67	1409	50.52	1328	49.77	1243	48.62	1139	47.04	907.7	43.41						
1200	1824	65.30	1760	65.38	1698	65.54	1628	65.79	1554	65.63	1479	64.98	1409	63.99	1328	62.61	1216	60.62	531.2	42.85
1300	2064	82.42	2015	82.90	1962	83.04	1904	83.13	1841	83.33	1777	83.59	1714	83.53	1646	83.20	1577	82.26	1435	79.54
1400	2294	102.1	2249	102.7	2206	103.1	2161	103.6	2106	103.7	2052	103.8	1999	104.0	1939	104.3	1878	104.4	1755	103.6
1500	2520	124.2	2477	125.1	2438	125.9	2395	126.4	2352	127.0	2309	127.5	2262	127.6	2211	127.7	2159	127.8	2051	128.4
1600	2743	149.3	2702	150.3	2665	151.3	2625	152.3	2585	153.0	2545	153.6	2508	154.1	2467	154.7	2420	154.8	2328	155.0
1700	2958	177.5	2924	178.9	2889	179.8	2851	180.9	2813	182.0	2775	183.0	2740	183.6	2703	184.3	2665	184.9	2587	185.6

STATIC PRESS.	279 mmAq		305 mmAq		330 mmAq		356 mmAq		381 mmAq		406 mmAq		432 mmAq		457 mmAq		483 mmAq		508 mmAq	
RPM	VOLUME (m <sup>3</sup> /min)	BHP (kW)	VOLUME (m <sup>3</sup> /min)	BHP (kW)	VOLUME (m <sup>3</sup> /min)	BHP (kW)	VOLUME (m <sup>3</sup> /min)	BHP (kW)	VOLUME (m <sup>3</sup> /min)	BHP (kW)	VOLUME (m <sup>3</sup> /min)	BHP (kW)	VOLUME (m <sup>3</sup> /min)	BHP (kW)	VOLUME (m <sup>3</sup> /min)	BHP (kW)	VOLUME (m <sup>3</sup> /min)	BHP (kW)	VOLUME (m <sup>3</sup> /min)	BHP (kW)
1300	1164	73.85																		
1400	1630	101.3	1482	97.76	1133	88.83														
1500	1938	128.2	1819	126.4	1700	123.4	1543	119.0	1167	107.1										
1600	2228	155.6	2121	155.8	2014	154.9	1901	152.3	1786	148.9	1635	144.1	1275	131.6						
1700	2500	185.9	2405	186.4	2310	187.0	2206	186.6	2105	185.0	2002	182.1	1888	178.3	1751	173.3	1431	161.4	818.5	126.0

D51HE DW 490 SIZE

OUTLET AREA 2.2530 m<sup>2</sup>

STATIC PRESS.	6 mmAq		13 mmAq		25 mmAq		38 mmAq		51 mmAq		64 mmAq		76 mmAq		88 mmAq		102 mmAq		113 mmAq	
RPM	VOLUME (m <sup>3</sup> /min)	BHP (kW)	VOLUME (m <sup>3</sup> /min)	BHP (kW)	VOLUME (m <sup>3</sup> /min)	BHP (kW)	VOLUME (m <sup>3</sup> /min)	BHP (kW)	VOLUME (m <sup>3</sup> /min)	BHP (kW)	VOLUME (m <sup>3</sup> /min)	BHP (kW)	VOLUME (m <sup>3</sup> /min)	BHP (kW)	VOLUME (m <sup>3</sup> /min)	BHP (kW)	VOLUME (m <sup>3</sup> /min)	BHP (kW)	VOLUME (m <sup>3</sup> /min)	BHP (kW)
700	1788	19.01	1736	19.54	1653	20.34	1555	21.00	1452	21.36	1328	21.46	1202	21.44	1068	20.66	701.9	17.53		
800	2055	28.21	2010	28.82	1934	29.82	1856	30.74	1767	31.42	1679	31.83	1584	31.94	1479	32.11	1347	31.84	1240	31.01
900	2320	40.00	2281	40.70	2212	41.87	2142	42.97	2071	43.94	1992	44.70	1919	45.15	1841	45.42	1738	45.54	1651	45.75
1000	2584	54.70	2550	55.50	2488	56.80	2423	58.15	2361	59.31	2295	60.34	2229	61.12	2164	61.71	2088	62.24	2017	62.34
1100	2848	72.64	2818	73.55	2762	74.98	2701	76.53	2643	77.89	2587	79.17	2532	80.20	2472	81.06	2402	81.95	2348	82.41
1200	3111	94.14	3084	95.14	3033	96.73	2977	98.41	2922	100.1	2871	101.5	2823	102.8	2773	103.9	2709	105.0	2659	105.9
1300	3375	119.5	3349	120.6	3303	122.4	3252	124.2	3200	126.0	3150	127.7	3107	129.1	3063	130.5	3010	132.0	2963	133.0
1400	3637	149.1	3614	150.3	3572	152.2	3524	154.2	3476	156.2	3429	158.1	3387	159.8	3346	161.3	3299	163.0	3261	164.4
1500	3900	183.3	3878	184.5	3840	186.6	3795	188.7	3751	190.9	3706	193.0	3665	194.9	3626	196.6	3582	198.5	3547	199.9

STATIC PRESS.	127 mmAq		140 mmAq		152 mmAq		165 mmAq		178 mmAq		191 mmAq		203 mmAq		216 mmAq		229 mmAq		254 mmAq	
RPM	VOLUME (m <sup>3</sup> /min)	BHP (kW)	VOLUME (m <sup>3</sup> /min)	BHP (kW)	VOLUME (m <sup>3</sup> /min)	BHP (kW)	VOLUME (m <sup>3</sup> /min)	BHP (kW)	VOLUME (m <sup>3</sup> /min)	BHP (kW)	VOLUME (m <sup>3</sup> /min)	BHP (kW)	VOLUME (m <sup>3</sup> /min)	BHP (kW)	VOLUME (m <sup>3</sup> /min)	BHP (kW)	VOLUME (m <sup>3</sup> /min)	BHP (kW)	VOLUME (m <sup>3</sup> /min)	BHP (kW)
800	1026	28.97																		
900	1533	45.48	1422	44.46	1306	43.08	1034	39.64												
1000	1924	62.49	1831	62.77	1740	62.60	1641	61.77	1539	60.41	1420	58.60	1169	55.23	554.6	39.74	0.0	0.0	0.0	0.0
1100	2276	82.90	2200	83.00	2127	83.14	2042	83.45	1955	83.42	1865	82.93	1782	81.91	1688	80.33	1580	78.34	1009	65.28
1200	2595	106.6	2536	107.2	2478	107.6	2408	107.7	2337	107.9	2260	108.2	2188	108.5	2106	108.2	2024	107.5	1862	104.7
1300	2904	134.2	2850	135.1	2799	135.7	2745	136.4	2687	136.8	2622	137.0	2562	137.1	2493	137.3	2422	137.7	2279	137.6
1400	3207	165.7	3156	166.9	3109	168.0	3059	168.9	3008	169.6	2957	170.3	2910	170.9	2849	171.0	2789	171.1	2667	171.6
1500	3503	201.8	3457	203.2	3414	204.4	3366	205.7	3319	207.0	3271	207.9	3228	208.6	3181	209.3	3133	210.0	3027	210.4

STATIC PRESS.	279 mmAq		305 mmAq		330 mmAq		356 mmAq		381 mmAq		406 mmAq		432 mmAq		457 mmAq		483 mmAq		508 mmAq	
RPM	VOLUME (m <sup>3</sup> /min)	BHP (kW)	VOLUME (m <sup>3</sup> /min)	BHP (kW)	VOLUME (m <sup>3</sup> /min)	BHP (kW)	VOLUME (m <sup>3</sup> /min)	BHP (kW)	VOLUME (m <sup>3</sup> /min)	BHP (kW)	VOLUME (m <sup>3</sup> /min)	BHP (kW)	VOLUME (m <sup>3</sup> /min)	BHP (kW)	VOLUME (m <sup>3</sup> /min)	BHP (kW)	VOLUME (m <sup>3</sup> /min)	BHP (kW)	VOLUME (m <sup>3</sup> /min)	BHP (kW)
1200	1654	100.20	964.8	80.03																
1300	2133	135.7	1975	132.1	1751	126.4	1141	105.7												
1400	2538	172.2	2398	171.4	2262	168.7	2112	164.6	1911	158.6	1455	142.8								
1500	2918	210.7	2794	211.5	2671	211.6	2539	210.2	2412	207.1	2279	203.0	2116	197.3	1749	184.5	977	142.9		

- Class Grade : Class 1  / Class 2  / Class 3

- Performance certified is for installation type-B (Free inlet, Ducted outlet)

- Performance ratings do not include the effects of aperturancs (accessories)

- Power rating(kW) does not include transmission losses

D51HE DW 542 SIZE

OUTLET AREA 2.7324 m<sup>2</sup>

STATIC PRESS.	6 mmAq		13 mmAq		25 mmAq		38 mmAq		51 mmAq		64 mmAq		76 mmAq		88 mmAq		102 mmAq		113 mmAq	
RPM	VOLUME (m <sup>3</sup> /min)	BHP (kW)	VOLUME (m <sup>3</sup> /min)	BHP (kW)	VOLUME (m <sup>3</sup> /min)	BHP (kW)	VOLUME (m <sup>3</sup> /min)	BHP (kW)	VOLUME (m <sup>3</sup> /min)	BHP (kW)	VOLUME (m <sup>3</sup> /min)	BHP (kW)	VOLUME (m <sup>3</sup> /min)	BHP (kW)	VOLUME (m <sup>3</sup> /min)	BHP (kW)	VOLUME (m <sup>3</sup> /min)	BHP (kW)	VOLUME (m <sup>3</sup> /min)	BHP (kW)
700	2401	30.72	2344	31.43	2250	32.57	2149	33.59	2037	34.31	1921	34.69	1795	34.80	1657	34.89	1489	34.03	1338	32.71
800	2756	45.63	2708	46.46	2623	47.85	2536	49.14	2446	50.23	2348	51.11	2258	51.59	2156	51.81	2025	52.01	1914	52.11
900	3110	64.74	3068	65.70	2992	67.27	2912	68.88	2837	70.27	2755	71.48	2675	72.42	2594	73.09	2500	73.69	2413	73.78
1000	3462	88.58	3426	89.69	3358	91.43	3284	93.31	3214	94.97	3146	96.52	3079	97.79	3007	98.83	2923	99.92	2857	100.5
1100	3815	117.7	3782	118.9	3721	120.9	3654	122.9	3587	125.0	3525	126.7	3468	128.3	3409	129.8	3332	131.1	3272	132.2
1200	4166	152.6	4136	153.9	4081	156.1	4020	158.3	3959	160.6	3898	162.8	3846	164.5	3794	166.2	3733	168.2	3677	169.3
1300	4518	193.8	4490	195.2	4441	197.6	4384	200.1	4327	202.5	4270	205.0	4220	207.1	4171	208.9	4115	211.1	4071	212.8
1400	4869	241.8	4843	243.3	4798	246.0	4746	248.6	4693	251.3	4640	253.9	4592	256.3	4545	258.6	4492	260.9	4451	262.8

STATIC PRESS.	127 mmAq		140 mmAq		152 mmAq		165 mmAq		178 mmAq		191 mmAq		203 mmAq		216 mmAq		229 mmAq		254 mmAq	
RPM	VOLUME (m <sup>3</sup> /min)	BHP (kW)	VOLUME (m <sup>3</sup> /min)	BHP (kW)	VOLUME (m <sup>3</sup> /min)	BHP (kW)	VOLUME (m <sup>3</sup> /min)	BHP (kW)	VOLUME (m <sup>3</sup> /min)	BHP (kW)	VOLUME (m <sup>3</sup> /min)	BHP (kW)	VOLUME (m <sup>3</sup> /min)	BHP (kW)	VOLUME (m <sup>3</sup> /min)	BHP (kW)	VOLUME (m <sup>3</sup> /min)	BHP (kW)	VOLUME (m <sup>3</sup> /min)	BHP (kW)
700	662.1	24.41																		
800	1768	51.43	1627	50.00	1432	47.72	819.4	37.72												
900	2296	74.00	2182	74.25	2070	74.01	1949	72.82	1822	71.06	1646	68.43	1279	62.27						
1000	2770	101.1	2677	101.2	2589	101.4	2487	101.7	2381	101.7	2273	101.2	2172	100.0	2058	98.06	1928	95.68	1272	80.94
1100	3195	133.2	3124	133.9	3058	134.5	2973	134.7	2889	134.8	2798	135.2	2712	135.5	2614	135.4	2516	134.9	2323	131.7
1200	3607	170.8	3542	172.2	3481	173.0	3417	173.8	3352	174.6	3276	174.8	3204	174.9	3126	175.1	3041	175.5	2873	175.9
1300	4010	214.7	3950	216.1	3894	217.5	3833	219.0	3773	219.9	3713	220.8	3658	221.5	3593	222.1	3522	222.3	3384	222.6
1400	4399	265.1	4350	267.2	4298	268.7	4242	270.3	4186	271.9	4130	273.5	4078	274.4	4023	275.3	3967	276.2	3852	277.5

STATIC PRESS.	279 mmAq		305 mmAq		330 mmAq		356 mmAq		381 mmAq		406 mmAq		432 mmAq		457 mmAq		483 mmAq		508 mmAq	
RPM	VOLUME (m <sup>3</sup> /min)	BHP (kW)	VOLUME (m <sup>3</sup> /min)	BHP (kW)	VOLUME (m <sup>3</sup> /min)	BHP (kW)	VOLUME (m <sup>3</sup> /min)	BHP (kW)	VOLUME (m <sup>3</sup> /min)	BHP (kW)	VOLUME (m <sup>3</sup> /min)	BHP (kW)	VOLUME (m <sup>3</sup> /min)	BHP (kW)	VOLUME (m <sup>3</sup> /min)	BHP (kW)	VOLUME (m <sup>3</sup> /min)	BHP (kW)	VOLUME (m <sup>3</sup> /min)	BHP (kW)
1100	2103	126.9	1501	111.4																
1200	2699	174.4	2514	170.5	2312	165.3	1845	152.6	0	0.00										
1300	3232	223.5	3068	223.4	2908	221.4	2737	217.2	2555	211.7	2248	202.4	1532	171.8						
1400	3724	277.8	3585	278.5	3445	279.5	3291	279.0	3142	276.7	2990	272.7	2825	267.1	2639	260.3	2187	243.7	1324	195.2

D51HE DW 600 SIZE

OUTLET AREA 3.3452 m<sup>2</sup>

STATIC PRESS.	6 mmAq		13 mmAq		25 mmAq		38 mmAq		51 mmAq		64 mmAq		76 mmAq		89 mmAq		102 mmAq		114 mmAq	
RPM	VOLUME (m <sup>3</sup> /min)	BHP (kW)	VOLUME (m <sup>3</sup> /min)	BHP (kW)	VOLUME (m <sup>3</sup> /min)	BHP (kW)	VOLUME (m <sup>3</sup> /min)	BHP (kW)	VOLUME (m <sup>3</sup> /min)	BHP (kW)	VOLUME (m <sup>3</sup> /min)	BHP (kW)	VOLUME (m <sup>3</sup> /min)	BHP (kW)	VOLUME (m <sup>3</sup> /min)	BHP (kW)	VOLUME (m <sup>3</sup> /min)	BHP (kW)	VOLUME (m <sup>3</sup> /min)	BHP (kW)
700	3264	50.75	3202	51.73	3095	53.38	2987	54.86	2868	56.07	2745	56.98	2629	57.50	2493	57.61	2321	57.96	2176	57.72
800	3743	75.44	3691	76.60	3597	78.48	3498	80.39	3404	82.07	3300	83.46	3200	84.59	3100	85.29	2977	85.87	2869	85.98
900	4221	107.1	4176	108.5	4092	110.6	4002	112.9	3916	114.9	3833	116.8	3750	118.3	3661	119.6	3557	120.9	3476	121.5
1000	4698	146.6	4658	148.1	4584	150.5	4502	153.1	4421	155.6	4345	157.8	4276	159.7	4205	161.6	4112	163.2	4038	164.5
1100	5175	194.9	5138	196.5	5072	199.2	4998	202.0	4924	204.8	4851	207.6	4787	209.7	4724	211.9	4651	214.3	4586	215.9
1200	5651	252.7	5617	254.5	5558	257.5	5490	260.6	5422	263.6	5354	266.7	5292	269.5	5234	271.8	5167	274.5	5114	276.7

STATIC PRESS.	127 mmAq		140 mmAq		152 mmAq		165 mmAq		178 mmAq		191 mmAq		203 mmAq		216 mmAq		229 mmAq		254 mmAq	
RPM	VOLUME (m <sup>3</sup> /min)	BHP (kW)	VOLUME (m <sup>3</sup> /min)	BHP (kW)	VOLUME (m <sup>3</sup> /min)	BHP (kW)	VOLUME (m <sup>3</sup> /min)	BHP (kW)	VOLUME (m <sup>3</sup> /min)	BHP (kW)	VOLUME (m <sup>3</sup> /min)	BHP (kW)	VOLUME (m <sup>3</sup> /min)	BHP (kW)	VOLUME (m <sup>3</sup> /min)	BHP (kW)	VOLUME (m <sup>3</sup> /min)	BHP (kW)	VOLUME (m <sup>3</sup> /min)	BHP (kW)
700	1988	56.15	1785	53.94	1241	46.64														
800	2720	86.33	2574	86.38	2436	85.67	2282	83.95	2110	81.55	1785	76.95	1031	60.58						
900	3368	122.2	3254	122.4	3145	122.6	3019	123.1	2888	123.0	2754	122.2	2630	120.6	2490	118.2	2326	115.2	1393	93.29
1000	3945	165.9	3859	166.8	3779	167.6	3677	167.8	3574	167.9	3465	168.3	3360	168.8	3243	168.8	3123	168.4	2890	164.7
1100	4501	217.7	4422	219.4	4350	220.6	4271	221.6	4193	222.6	4107	223.19	4021	223.4	3927	223.5	3828	223.9	3629	224.9
1200	5045	279.3	4972	281.1	4906	282.8	4833	284.6	4761	286.2	4689	287.28	4623	288.3	4551	289.3	4469	289.8	4305	290.2

STATIC PRESS.	279 mmAq		305 mmAq		330 mmAq		356 mmAq		381 mmAq		406 mmAq		432 mmAq		457 mmAq		483 mmAq		508 mmAq	
RPM	VOLUME (m <sup>3</sup> /min)	BHP (kW)	VOLUME (m <sup>3</sup> /min)	BHP (kW)	VOLUME (m <sup>3</sup> /min)	BHP (kW)	VOLUME (m <sup>3</sup> /min)	BHP (kW)	VOLUME (m <sup>3</sup> /min)	BHP (kW)	VOLUME (m <sup>3</sup> /min)	BHP (kW)	VOLUME (m <sup>3</sup> /min)	BHP (kW)	VOLUME (m <sup>3</sup> /min)	BHP (kW)	VOLUME (m <sup>3</sup> /min)	BHP (kW)	VOLUME (m <sup>3</sup> /min)	BHP (kW)
1000	2628	159.0	2001	144.3																
1100	3420	224.0	3199	219.8	2970	213.9	2574	203.2	1591	165.5										
1200	4129	291.0	3938	291.9	3746	291.0	3546	286.9	3344	281.0	3113	273.5	2611	257.2	1534	203.7				

- Class Grade : Class 1  / Class 2  / Class 3

- Performance certified is for installation type-B (Free inlet, Ducted outlet)

- Performance ratings do not include the effects of appurtenances (accessories)

- Power rating(kW) does not include transmission losses