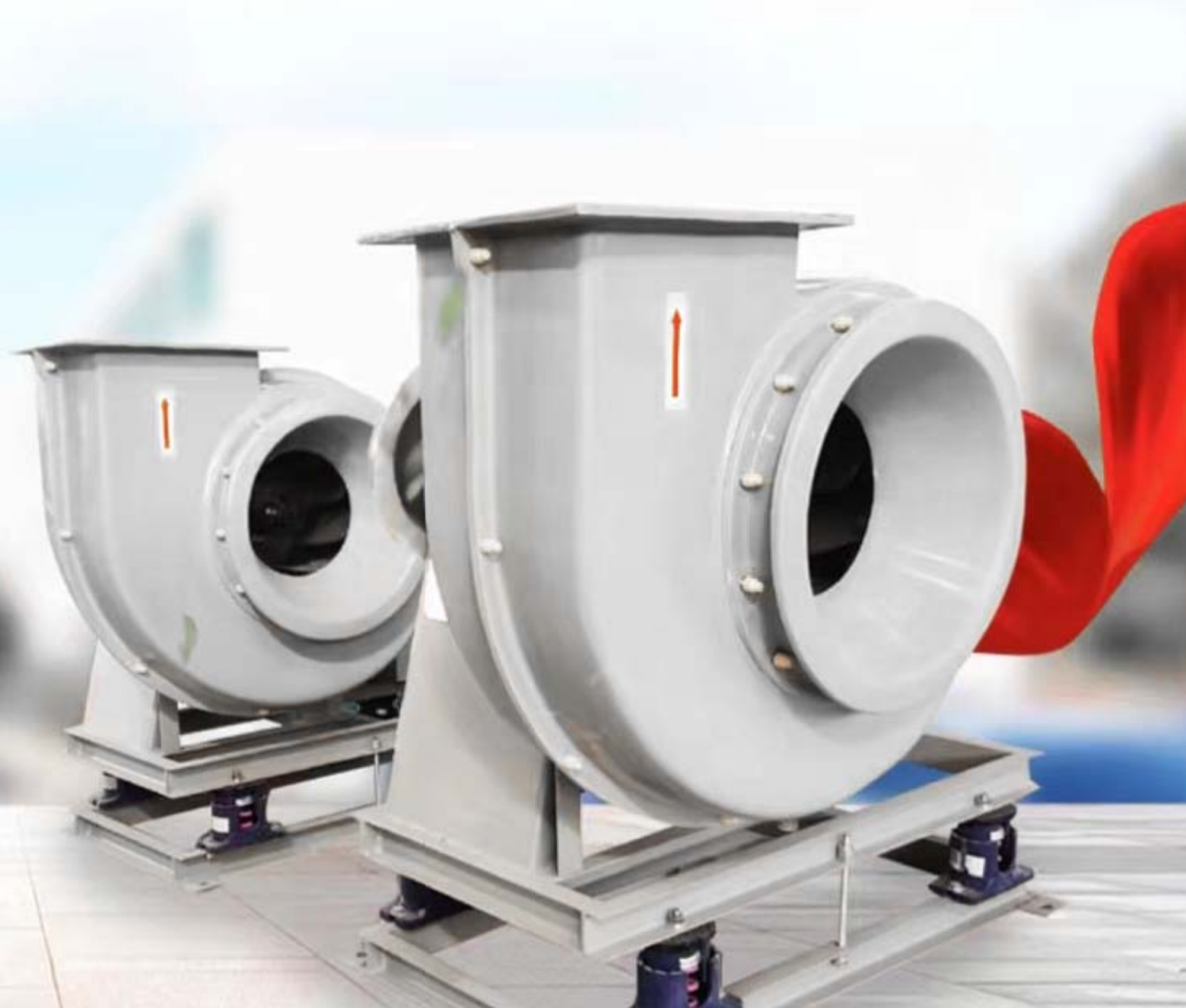




FTF-A Series, Backward Inclined Centrifugal Impeller

FTF-A(CN), July 2024



Wuxi Chiu Chau Environmental Protection Equipment Co., Ltd. certifies that the FTF-A series fans shown herein are licensed to bear the AMCA Seal. The ratings shown are based on tests and procedures performed in accordance with AMCA Publication 211 and AMCA Publication 311 and comply with the requirements of the AMCA Certified Ratings Program. All the Centrifugal Fans described herein are licensed to bear the AMCA Seal, and their certified ratings are shown on pages 7 through 15.

无锡久朝环保设备有限公司特此证明，此处所示 FTF-A 系列离心风机获得了加盖 AMCA 印章的授权。所示额定值系根据 AMCA 出版物 211 和 AMCA 出版物 311 所进行测试和程序确定，并符合 AMCA 认证额定值计划的要求。这里描述的所有离心风机都已经取得了 AMCA 印章，它们的认证数据见第 7 到 15 页。

经营理念:诚信为本、永续经营
质量政策:质量优良、客户满意

Idea of operation: Prime in authentication, everlasting operation

Quality policy: Good quality , customer satisfaction

关于久朝

About ChiuChau

公司简介

无锡久朝环保设备有限公司始终保持和老客户的密切关系，并积极开拓新市场，实现持续、稳定、协调的发展。承揽合同、销售收入、利税总额同创历史新高，为公司做了坚实的基础。无锡久朝环保设备有限公司也通过 ISO-9001 质量、管制体系认证。以“**诚信为本、永续经营、质量优良、顾客满意**”为服务宗旨，增强顾客满意度，努力地为国家经济建设和社会提供一流的产品。

Wuxi Chiu Chau Environmental Protection Equipment Co. Ltd, we always keep good contact with old customers and exploit new market aggressively, realize continue, stable and coordinate development. The agreement contracted, proceeds, income after taxed both create peak in history. In order to affirm the foundation, we passed ISO-9001 quality management system accreditation. We prime the motto of "authentication, everlasting operation, good quality, customer satisfaction" as subject of national economy, providing first class product to society.

厂区：

占地 6221 平方米、行车 5 吨×4 台、行车 10 吨×4 台、叉车 3.5 吨×1 台、叉车 6 吨×1 台。

Factory area:

It covers an area of 6221 square meters, 5T overhead crane, 10T overhead crane, 3.5 tons for forklift trucks and 6 tons by forklift trucks..

质量承诺

- 致力建立执行及维护完善之质量管理体系。
- 以顾客为尊，持续了解客户之需求。
- 如期提供符合顾客所要求之质量与服务。
- 全员参与及持续改善各部门绩效。
- 持续不断提升客户满意度。

Quality commitment:

- endeavors are in the performing and maintaining perfect quality management system

- customer-oriented services to provide personalized service to each particular customer
- offering quality services to the needs of customers on timely basis
- company-wide participation in continuous improvement of performances of various department
- incessant promoting customer satisfaction

生产设备：

动平衡校正机、油压折床、油压剪床、卧式车床、电浆切割机、电焊机、CO2电焊机、旋压机、氩焊机。

Manufacturing equipment:

Dynamic Balance Cutter, Hydraulic Press Brake, Hydraulic Shearing Machine, Plasma Cutter, Electric Welder, CO2 Welder, Spinning Press, Argon arc Welder

检验设备：

频谱分析仪、雷射对心仪、热线式风速计、噪音分贝计、U型管、电子式压力计、温度计、转速计、皮氏管、薄膜计等风机检验设备。

Laboratory Apparatus:

Spectrometer, Laser Aligner, Thermo Anemometers, Noise Gauge, U-Tube, Electronic Pressure Gauge, Thermometer, Tachometer, Pitot Tube, Film Gauge, Vernier Caliper.

售后服务

公司设有客服与维修保养部门，专职售后服务及紧急状况处理，针对客户反应案件进行故障判断、故障原因分析、故障排除，案件分类管理;同时亦可配合客户每年之定期保养。

After services and Customer Complaint Handling:

The Customer Service Department, Repair and Maintenance Department are established to satisfy service needs and emergency handling, and they are responsible for identification and diagnosis of all customer complaints, cause analysis and trouble shooting. All complaints are categorized and established with file to offer maintenance services on regular basis.

风机用途与特点

Applications and features

可广泛用于:腐蚀性酸碱气体的抽排风,废气净化处理,污水除臭等,含有腐蚀性气体的环境。

It can be widely used for: Ventilation of corrosive gas with acid-alkaline contents, and waste

gas purification, sewage deodorization and such environment is with corrosive gas.

产品特点:

※使用范围广泛，适用于多种工况，高效节能(省电)，为您创造利润，节省成本。

※本系列玻璃钢风机机壳、入口钟、叶轮均为纯玻璃钢，彻底改变了传统碳钢衬玻璃钢的制作工艺。

※机壳与铁架连接螺栓采用整体成形包覆处理方式，彻底解决了因腐蚀而造成螺栓损坏的现象。

※风机机采用双层底座，不用拆地脚螺栓，可方便维护风机。

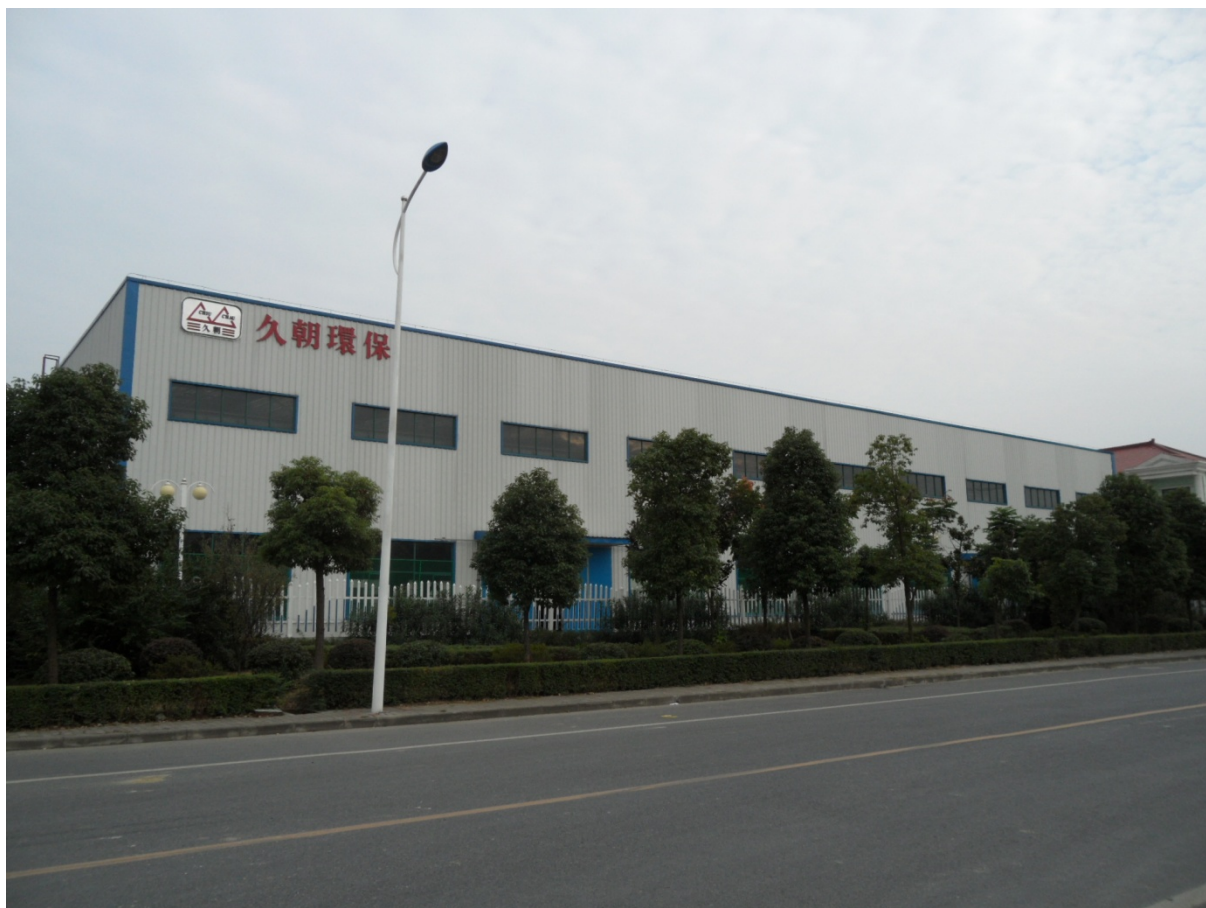
Product features:

※Applicable for wide range and multiple operation environment, Efficient energy performance to generate profit and cost saving.

※The enclosure, inlet bell and impeller of this series fan are made of pure fiber glass reinforced plastic, which has completely changed the fabricafing process for fiber glass reinforced plastic lined with traditional carbon-steel.

※The bolts linking the enclosure and iron support is seated by complete profiling wrapping method which has completely solved the issue of bolt damage due to corrosion.

※The fan is fitted with dual-level seat for easy maintenance without removing the anchor bolts.



企业资质



中国能效认证及效率标识



营业执照



ISO 质量认证管理体系

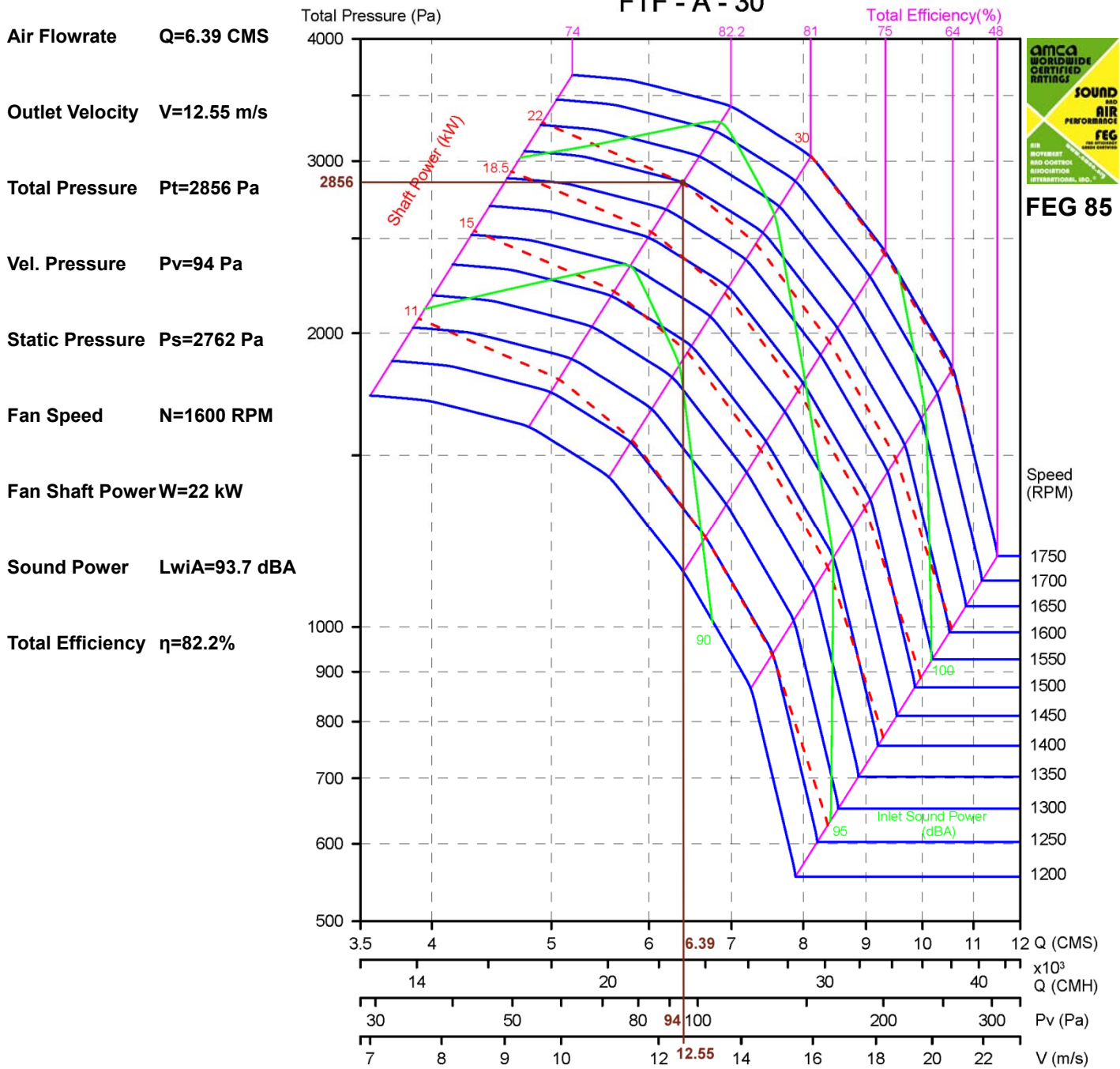


专利证书



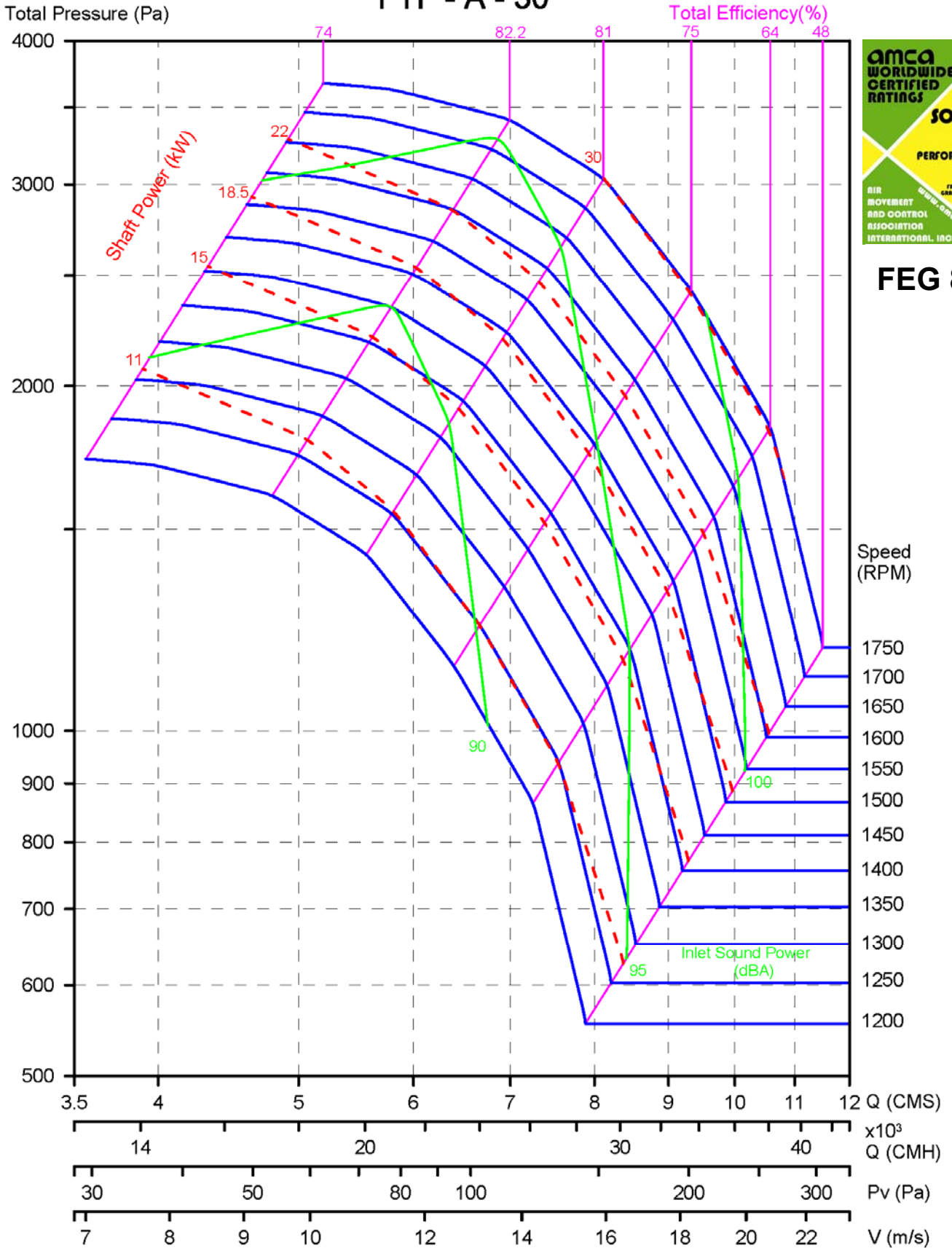
Example of Fan Curve Reading

FTF – A – 30 (Inlet Sound Power)



Performance certified is for installation type B, free inlet, ducted outlet. Power rating (kW) does not include transmission losses. Performance ratings do not include the effects of appurtenances (accessories). The A-weighted sound ratings shown have been calculated per AMCA International Standard 301. Values shown are for inlet LwiA sound power levels for Installation Type B: free inlet, ducted outlet.

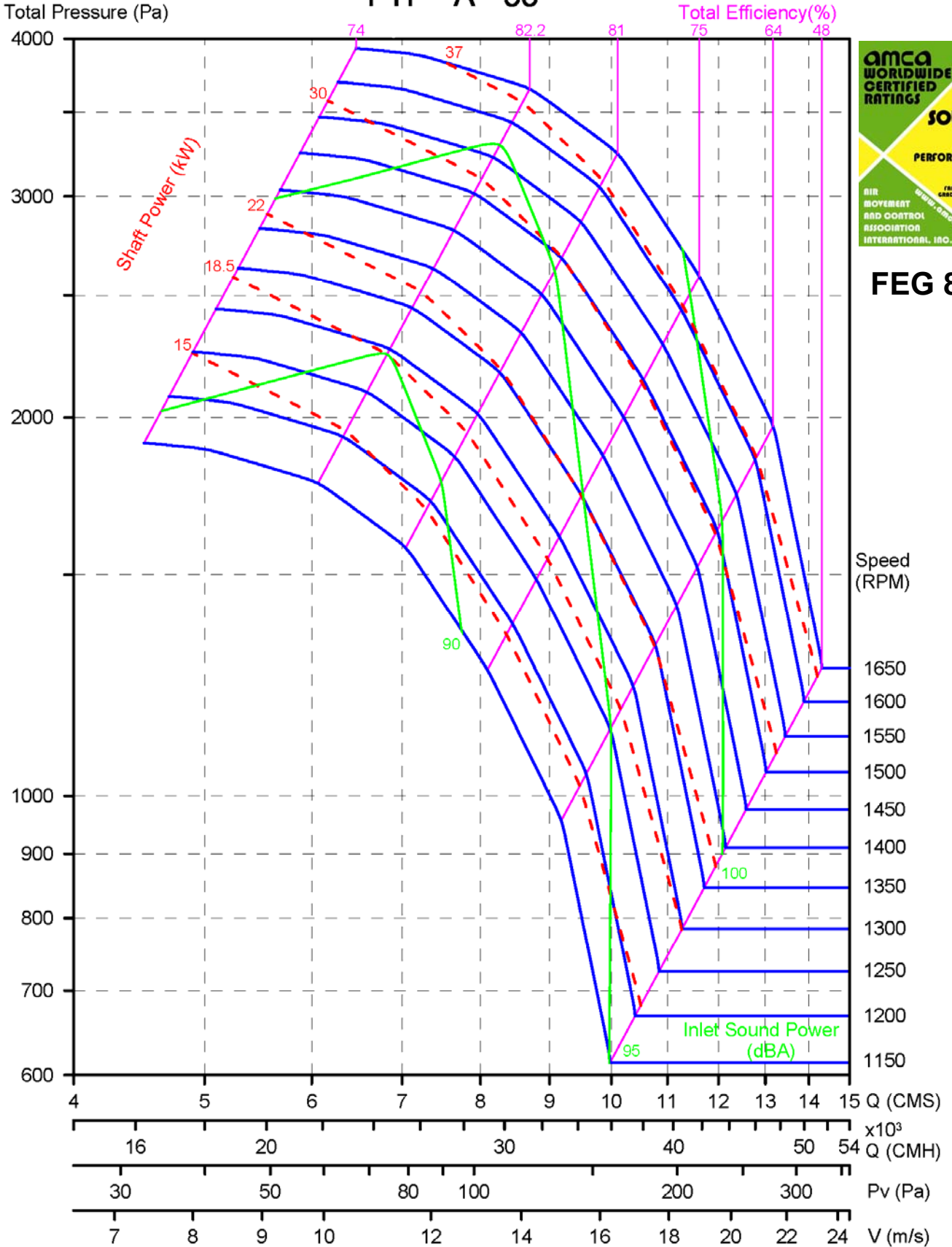
FTF - A - 30



FEG 85

Performance certified is for installation type B, free inlet, ducted outlet. Power rating (kW) does not include transmission losses. Performance ratings do not include the effects of appurtenances (accessories). The A-weighted sound ratings shown have been calculated per AMCA International Standard 301. Values shown are for inlet LwIA sound power levels for Installation Type B: free inlet, ducted outlet.

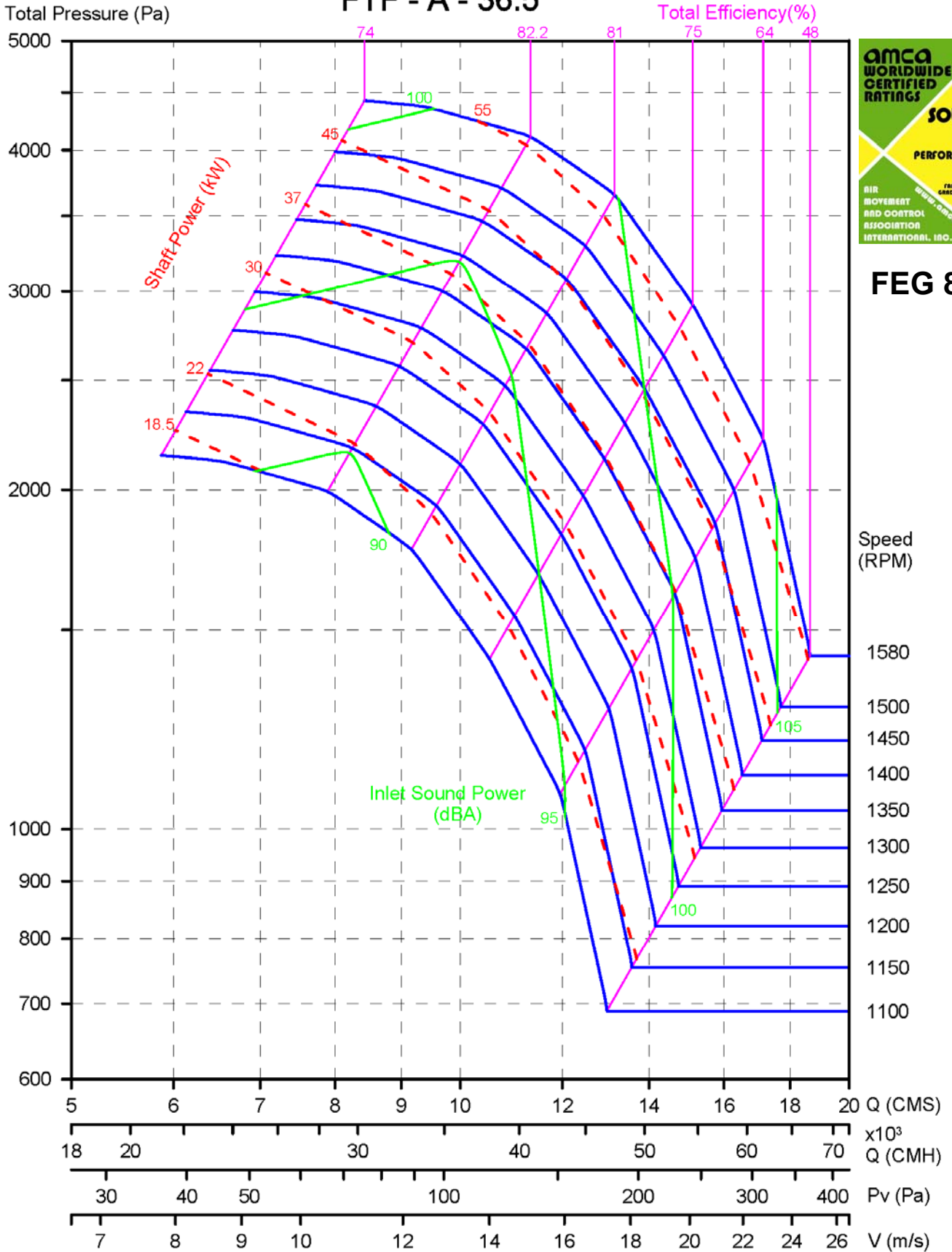
FTF - A - 33



FEG 85

Performance certified is for installation type B, free inlet, ducted outlet. Power rating (kW) does not include transmission losses. Performance ratings do not include the effects of appurtenances (accessories). The A-weighted sound ratings shown have been calculated per AMCA International Standard 301. Values shown are for inlet LwIA sound power levels for Installation Type B: free inlet, ducted outlet.

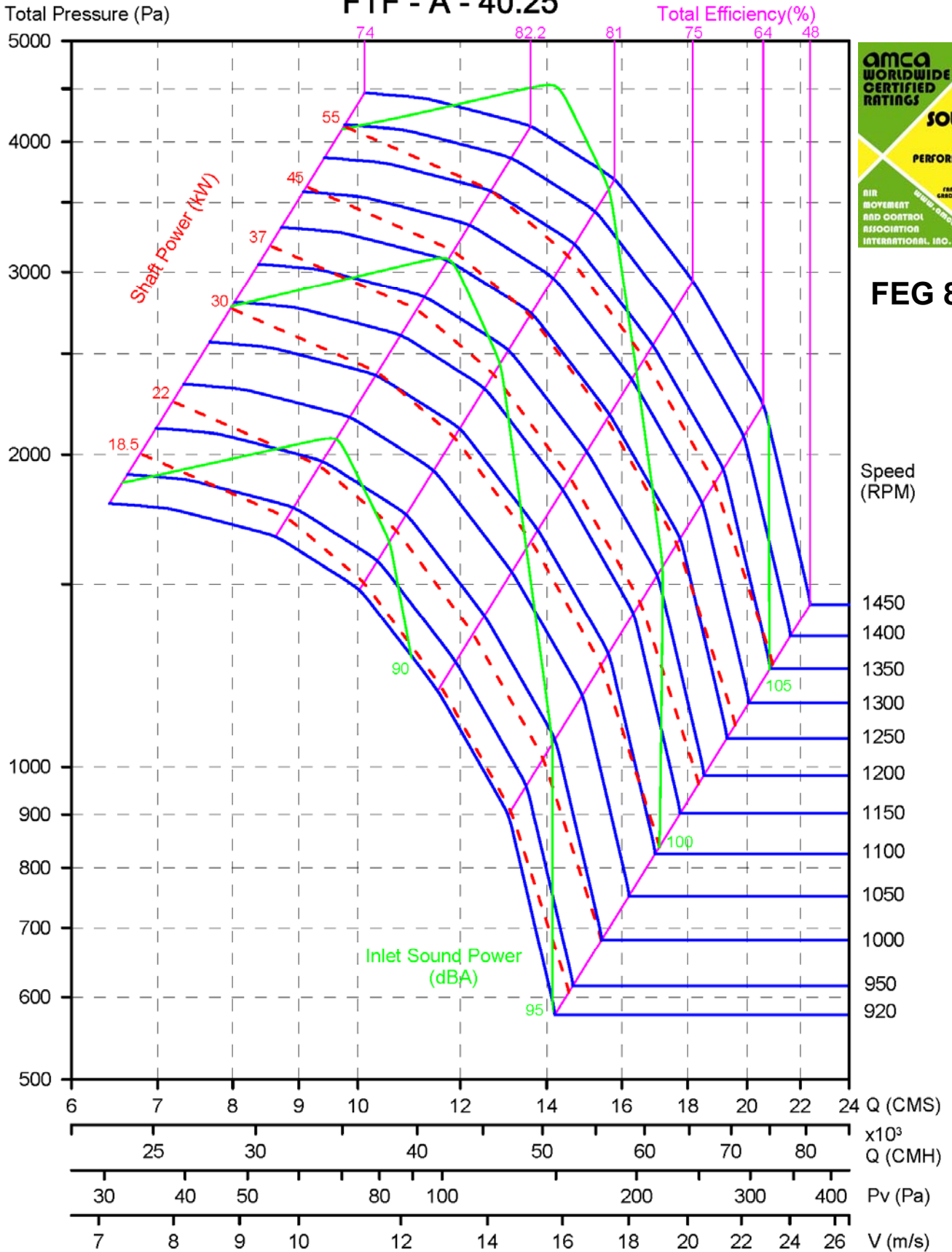
FTF - A - 36.5



FEG 85

Performance certified is for installation type B, free inlet, ducted outlet. Power rating (kW) does not include transmission losses. Performance ratings do not include the effects of appurtenances (accessories). The A-weighted sound ratings shown have been calculated per AMCA International Standard 301. Values shown are for inlet LwIA sound power levels for Installation Type B: free inlet, ducted outlet.

FTF - A - 40.25



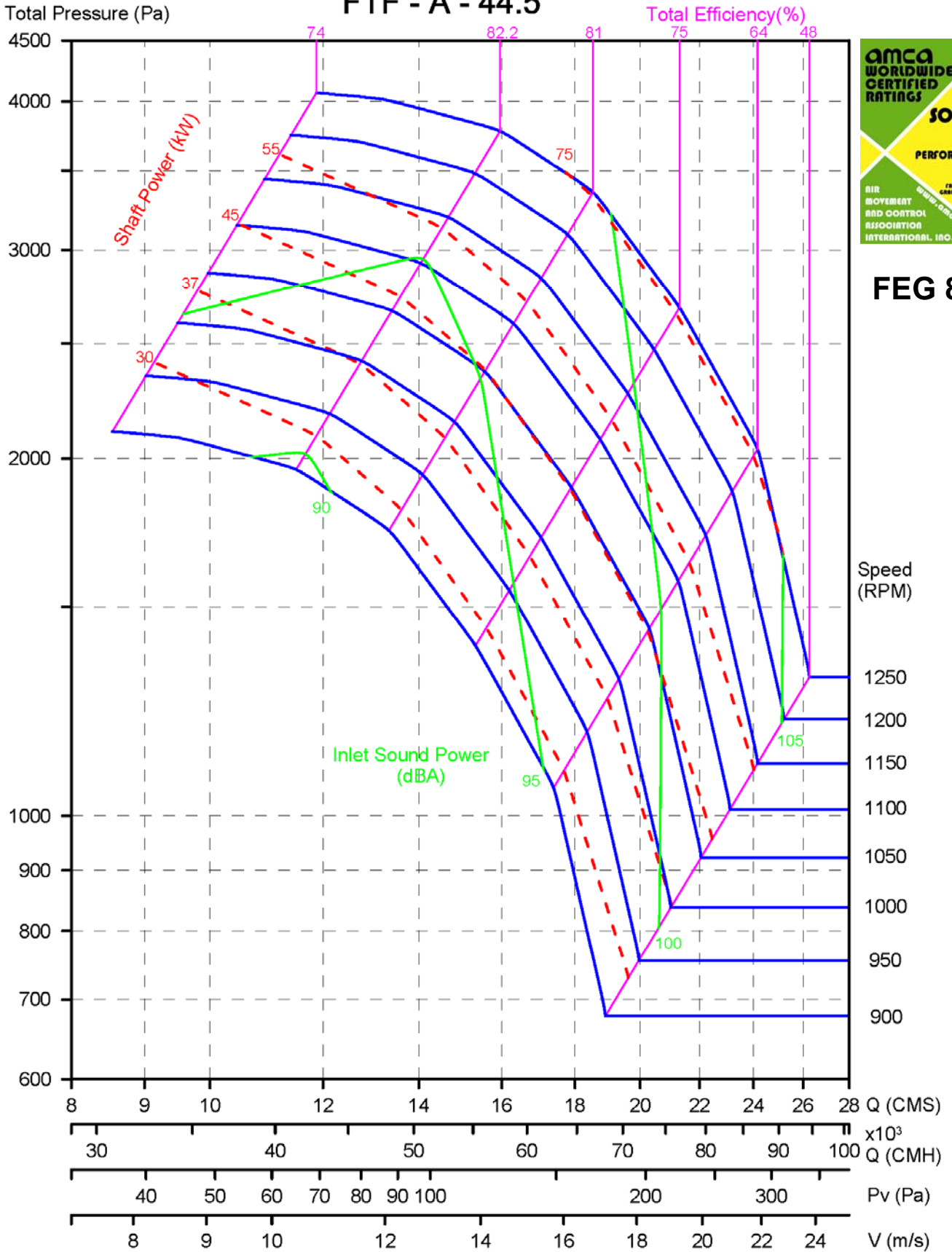
FEG 85

Speed (RPM)

Q (CMS)
x10³
Q (CMH)
Pv (Pa)
V (m/s)

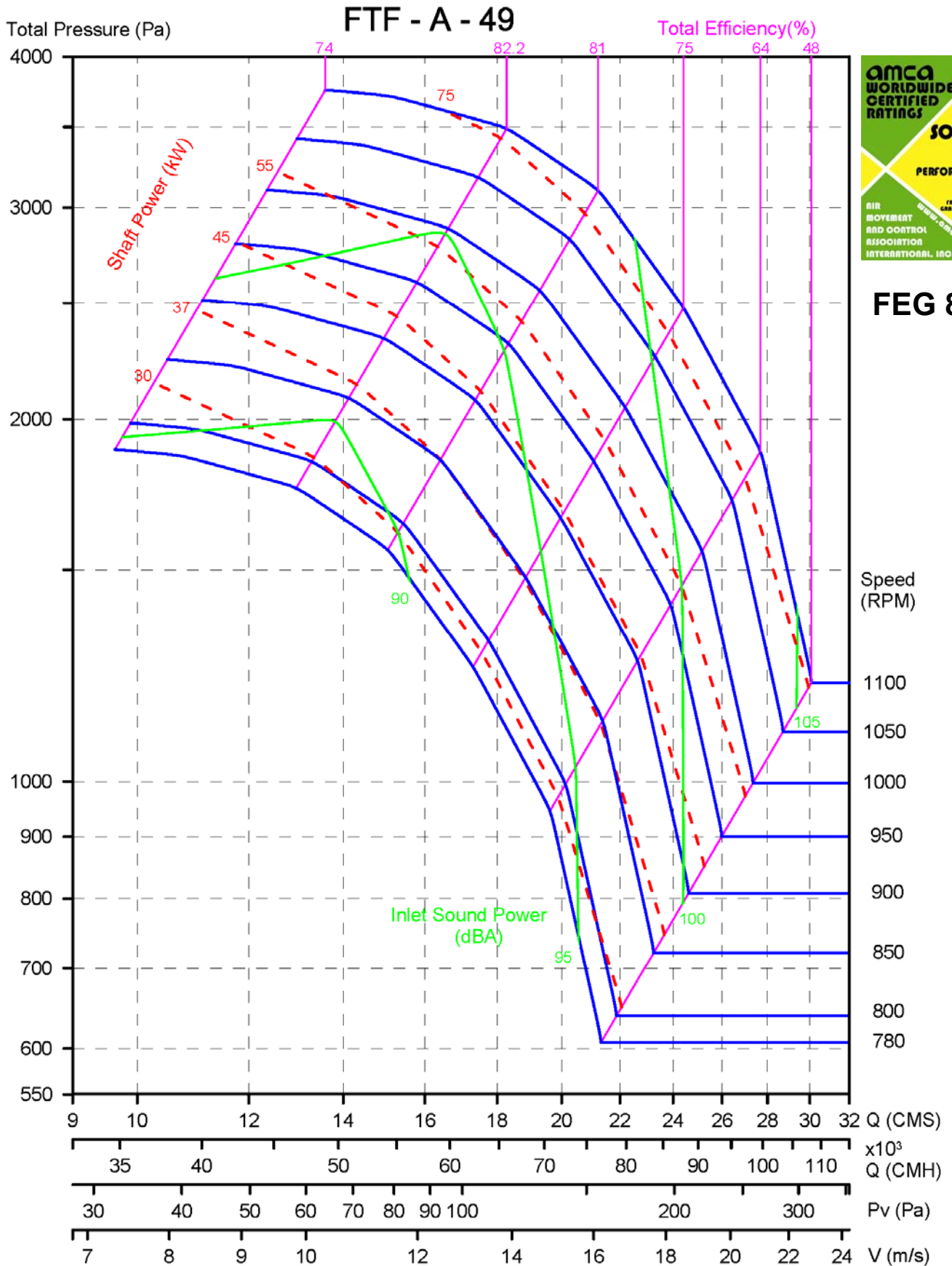
Performance certified is for installation type B, free inlet, ducted outlet. Power rating (kW) does not include transmission losses. Performance ratings do not include the effects of appurtenances (accessories). The A-weighted sound ratings shown have been calculated per AMCA International Standard 301. Values shown are for inlet LwIA sound power levels for Installation Type B: free inlet, ducted outlet.

FTF - A - 44.5



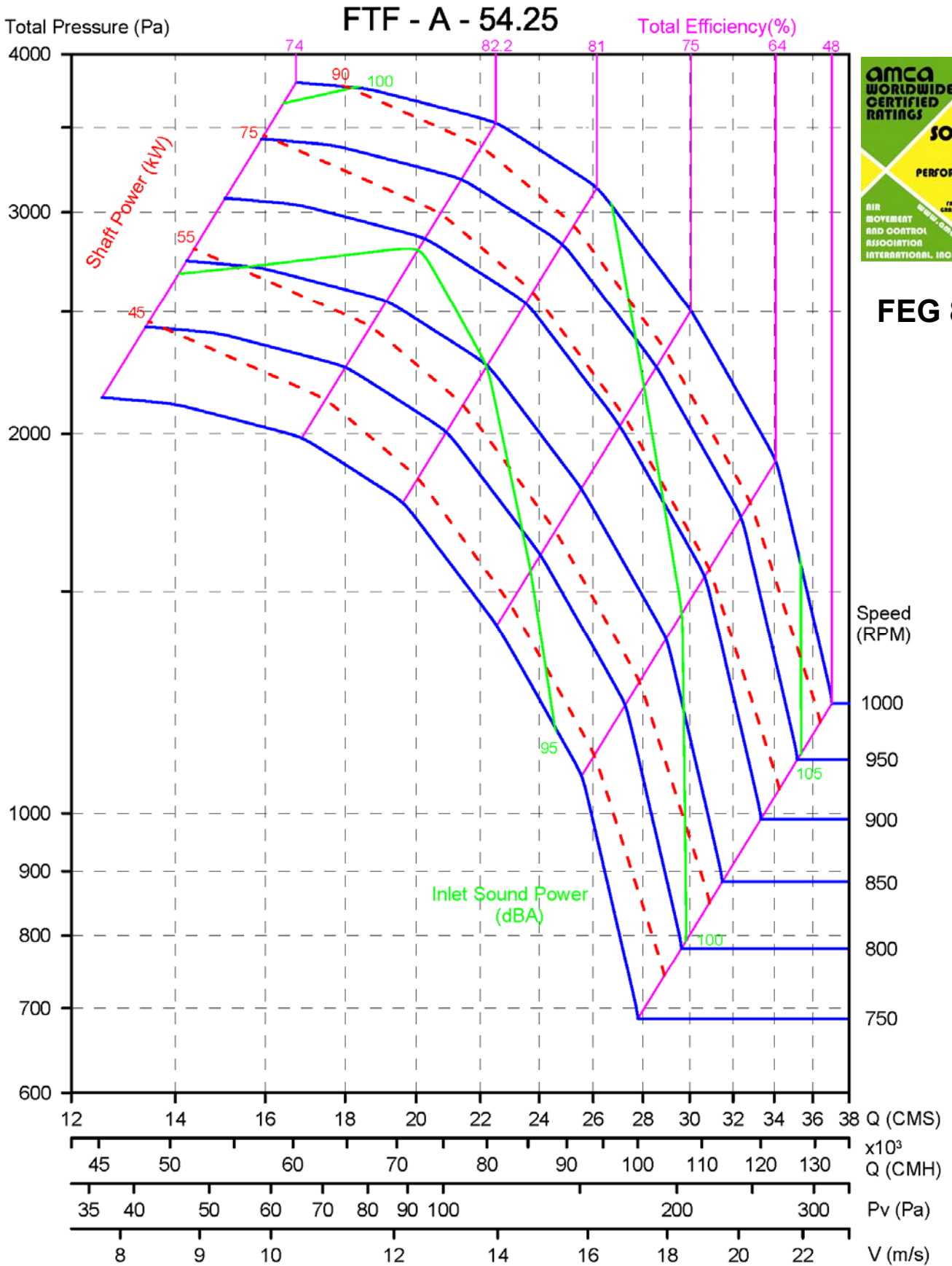
FEG 85

Performance certified is for installation type B, free inlet, ducted outlet. Power rating (kW) does not include transmission losses. Performance ratings do not include the effects of appurtenances (accessories). The A-weighted sound ratings shown have been calculated per AMCA International Standard 301. Values shown are for inlet LwIA sound power levels for Installation Type B: free inlet, ducted outlet.



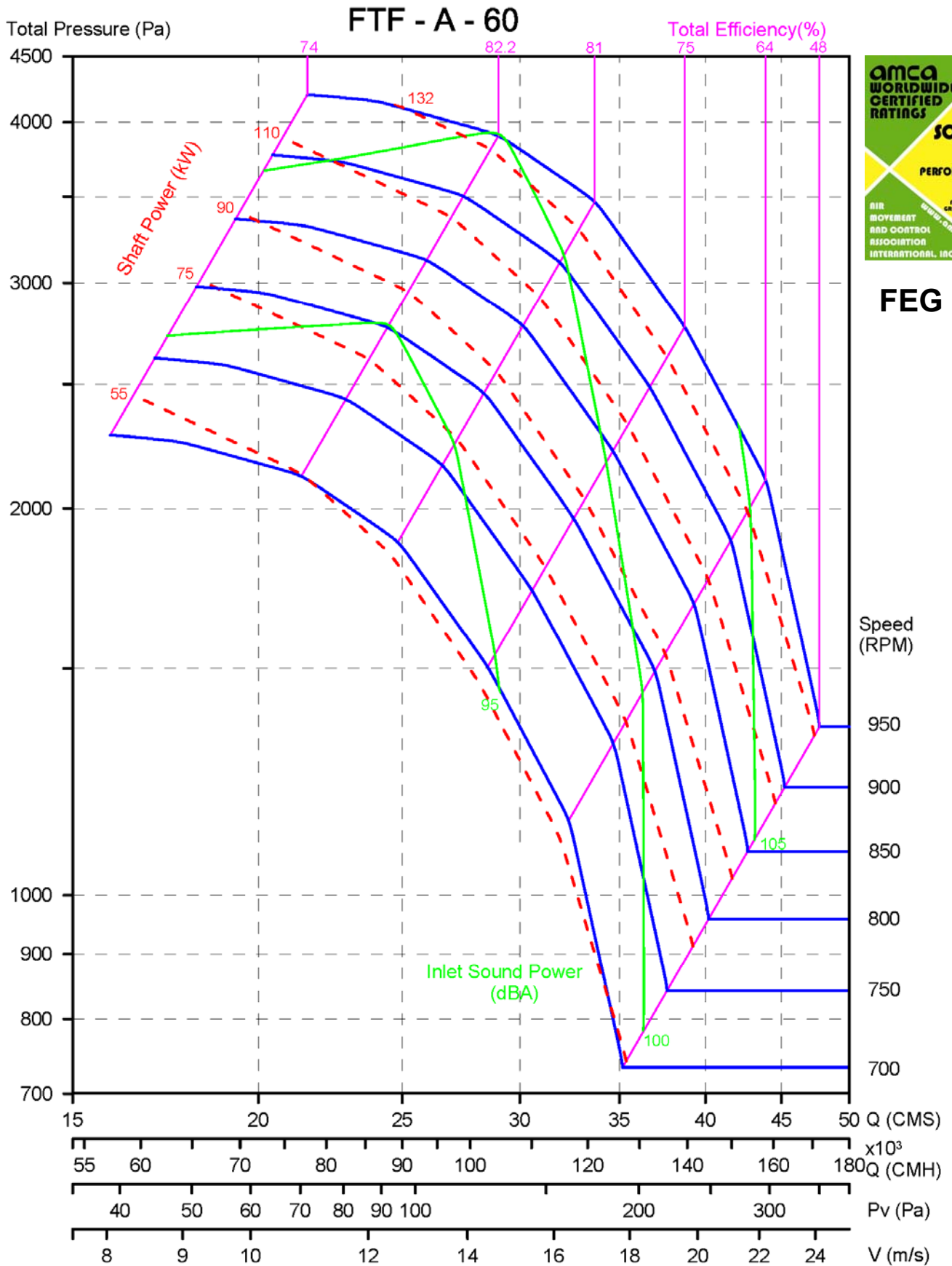
FEG 85

Performance certified is for installation type B, free inlet, ducted outlet. Power rating (kW) does not include transmission losses. Performance ratings do not include the effects of appurtenances (accessories). The A-weighted sound ratings shown have been calculated per AMCA International Standard 301. Values shown are for inlet LwIA sound power levels for Installation Type B: free inlet, ducted outlet.



FEG 85

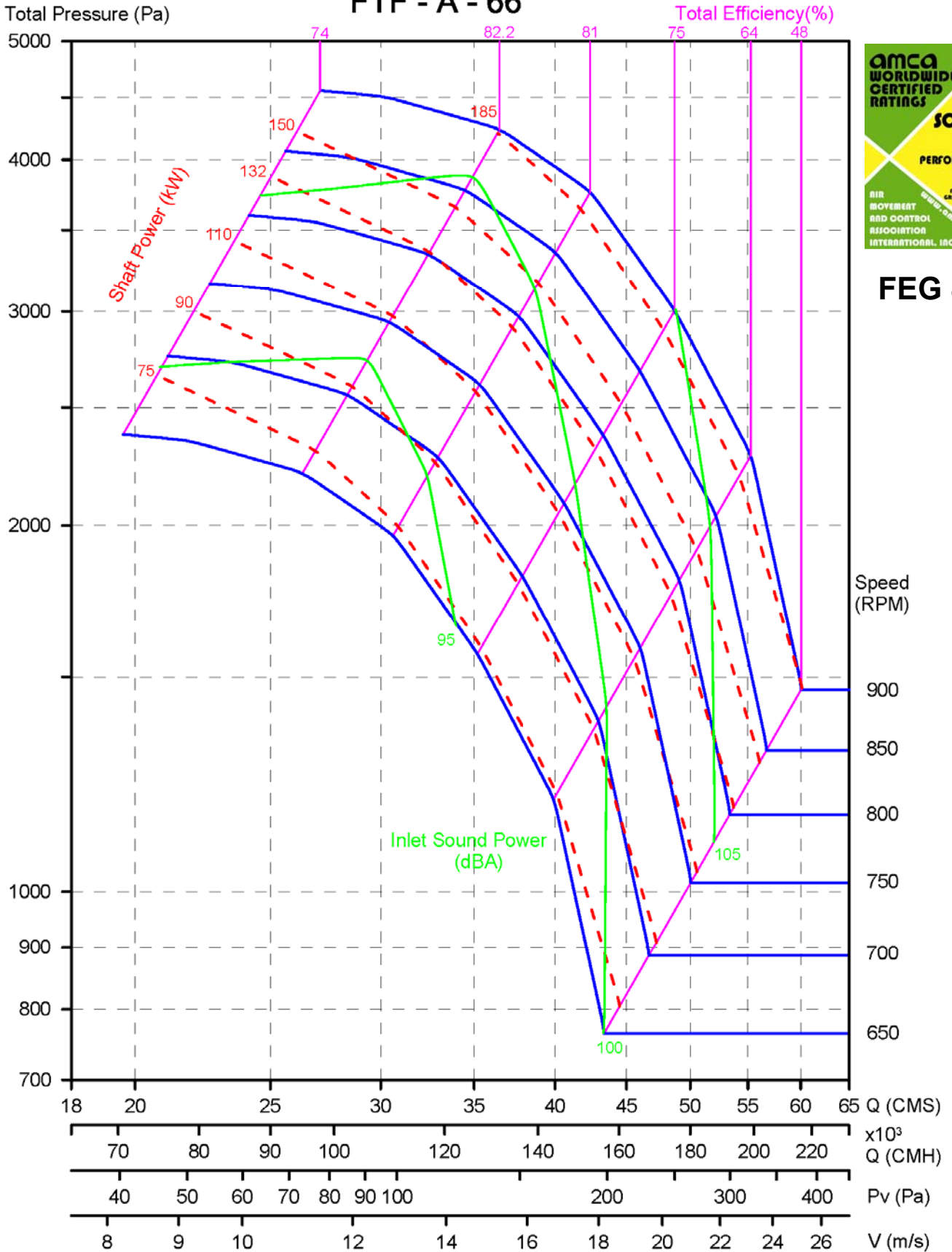
Performance certified is for installation type B, free inlet, ducted outlet. Power rating (kW) does not include transmission losses. Performance ratings do not include the effects of appurtenances (accessories). The A-weighted sound ratings shown have been calculated per AMCA International Standard 301. Values shown are for inlet LwIA sound power levels for Installation Type B: free inlet, ducted outlet.



FEG 85

Performance certified is for installation type B, free inlet, ducted outlet. Power rating (kW) does not include transmission losses. Performance ratings do not include the effects of appurtenances (accessories). The A-weighted sound ratings shown have been calculated per AMCA International Standard 301. Values shown are for inlet LwIA sound power levels for Installation Type B: free inlet, ducted outlet.

FTF - A - 66



FEG 85

Performance certified is for installation type B, free inlet, ducted outlet. Power rating (kW) does not include transmission losses. Performance ratings do not include the effects of appurtenances (accessories). The A-weighted sound ratings shown have been calculated per AMCA International Standard 301. Values shown are for inlet LwIA sound power levels for Installation Type B: free inlet, ducted outlet.



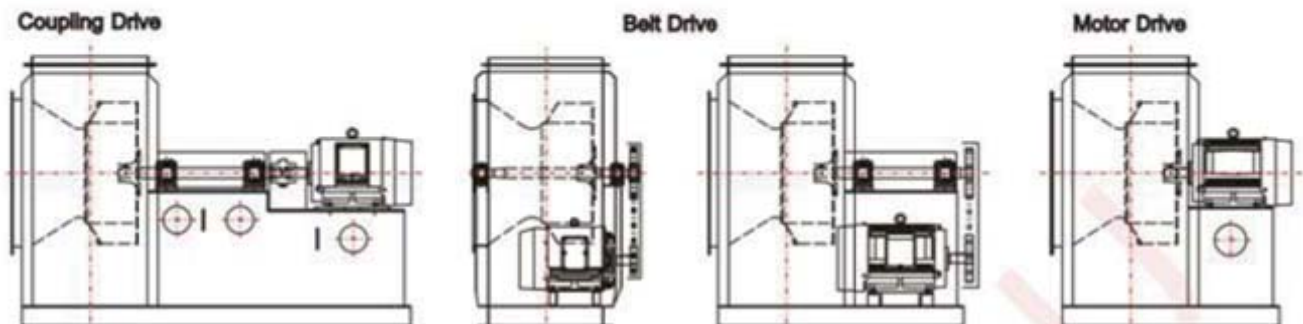
● Fan Dimension

FTF-A 30/33/36.5/40.25/44.5/49/54.25/60/66

● Dimension List

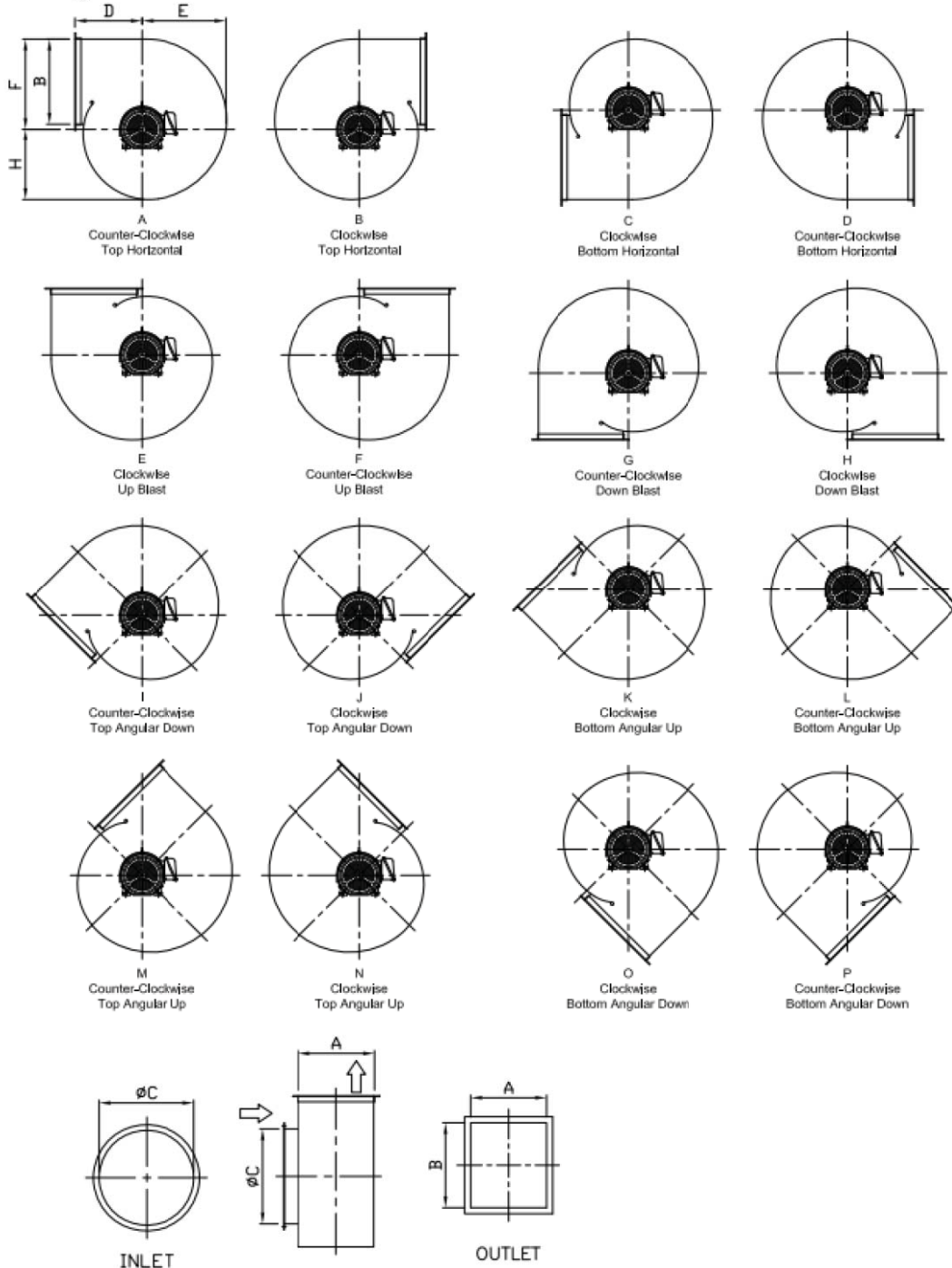
Model	inlet	Outlet		Body					Center Height					*Base	
	φC	A	B	D	E	F	G	I	H ₁	H ₂	H ₃	H ₄	H ₅	J*	φK*
30	φ850	670	760	597	755	809	630	435	730	970	855	820	700	8	φ15/φ19
33	φ930	740	830	635	830	889	692	470	792	1065	930	900	770	8	φ15/φ19
36.5	φ1030	810	920	699	915	982	764	505	780	1165	1040	1000	850	8	φ19
40.25	φ1130	890	1010	768	1007	1081	841	570	860	1280	1132	1100	930	8	φ19
44.5	φ1250	990	1100	900	1074	1208	939	620	960	1440	1100	1160	1030	8	φ22
49	φ1380	1090	1200	970	1182	1330	1033	695	1055	1570	1210	1280	1130	8	φ22
54.25	φ1520	1200	1350	1100	1037	1470	1145	750	1170	1720	1330	1420	1250	8	φ22
60	φ1680	1330	1490	1150	1444	1624	1264	815	1446	1856	1625	1716	1536	10	φ24
66	φ1850	1460	1650	1300	1588	1786	1390	880	1590	2136	1788	1887	1690	12	φ24

Model	Base					
	L*	L ₁ *	L ₂ *	W*	W ₁ *	W ₂ *
30	1750	565	1185	1450	400	1050
33	1800	605	1195	1550	435	1115
36.5	2000	665	1335	1700	470	1230
40.25	2150	715	1435	1800	510	1290
44.5	2550	795	1755	1970	570	1400
49	2700	855	1845	2060	620	1440
54.25	2900	935	1965	2180	675	1505
60	3000	1015	1985	2500	740	1760
66	3100	1100	2000	2700	805	1895





● Rotating Orientation:



无锡久朝环保设备有限公司

Wuxi Chiu Chau Environmental Protection Equipment Co.,Ltd

地址: 无锡市新吴区城南路 233 号 A 幢

Add.: No. 233 A South Chengnan Road, New District, Wuxi, Jiangsu,China

Tel: 0510-88550351

Email: c.c.fan@wxchiuchau.com

Http:// www.wxchiuchau.com