



Wuxi Chiu Chau Environmental Protection Equipment Co.,Ltd

TF-Series, Backward Inclined Centrifugal Impeller

TF2023, December 2023



Wuxi Chiu Chau Environmental Protection Equipment Co., Ltd. certifies that the TF series fans shown herein are licensed to bear the AMCA Seal. The ratings shown are based on tests and procedures performed in accordance with AMCA Publication 211 and AMCA Publication 311 and comply with the requirements of the AMCA Certified Ratings Program. All the Centrifugal Fans described herein are licensed to bear the AMCA Seal, and their certified ratings are shown on pages 5 through 16. 无锡久朝环保设备有限公司特此证明，此处所示 TF 系列离心风机获得了加拿大 AMCA 印章的授权。所示额定值系根据 AMCA 出版物 211 和 AMCA 出版物 311 所进行测试和程序确定，并符合 AMCA 认证额定值计划的要求。这里描述的所有离心风机都已经取得了 AMCA 印章，它们的认证数据见第 5 到 16 页。

Quality Reputation Service

经营理念:诚信为本、永续经营

质量政策:质量优良、客户满意

Idea of operation: Prime in authentication, everlasting operation

Quality policy: Good quality, customer satisfaction

关于久朝

About ChiuChau

公司简介

无锡久朝环保设备有限公司始终保持和老客户的密切关系，并积极开拓新市场，实现持续、稳定、协调的发展。承揽合同、销售收入、利税总额同创历史新高，为公司做了坚实的基础。无锡久朝环保设备有限公司也通过 ISO-9001 质量、管制体系认证。以“**诚信为本、永续经营、质量优良、顾客满意**”为服务宗旨，增强顾客满意度，努力地为国家经济建设和社会提供一流的产品。

Wuxi Chiu Chau Environmental Protection Equipment Co., Ltd, we always keep good contact with old customers and exploit new market aggressively, realize continue, stable and coordinate development. The agreement contracted, proceeds, income after taxed both create peak in history. In order to affirm the foundation, we passed ISO-9001 quality management system accreditation. We prime the motto of "authentication, everlasting operation, good quality, customer satisfaction" as subject of national economy, providing first class product to society.

厂区:

占地 6,221 平方米、行车 5 吨×4 台、行车 10 吨×4 台、叉车 3.5 吨×1 台、叉车 6 吨×1 台。

Factory area:

It covers an area of 6,221 square meters, 5T overhead crane, 10T overhead crane, 3.5 tons forklift trucks and 6 tons forklift trucks..

质量承诺

- 致力建立执行及维护完善之质量管理体系。
- 以顾客为尊，持续了解客户之需求。
- 如期提供符合顾客所要求之质量与服务。
- 全员参与及持续改善各部门绩效。
- 持续不断提升客户满意度。

Quality commitment:

- endeavors are in the performing and maintaining perfect quality management system
- customer-oriented services to provide personalized service to each particular customer
- offering quality services to the needs of customers on timely basis
- company-wide participation in continuous improvement of performances of various department
- incessant promoting customer satisfaction

生产设备:

动平衡校正机、油压折床、油压剪床、卧式车床、电浆切割机、电焊机、CO2电焊机、旋压机、氩焊机。

Manufacturing equipment:

Dynamic Balance, Cutter, Hydraulic Press Brake, Hydraulic Shearing Machine, Plasma Cutter, Electric Welder, CO2 Welder, Spinning Press, Argon arc Welder

检验设备:

频谱分析仪、雷射对心仪、热线式风速计、噪音分贝计、U型管、电子式压力计、温度计、转速计、皮氏管、薄膜计等风机检验设备。

Laboratory Apparatus:

Spectrometer, Laser Aligner, Thermo Anemometers, Noise Gauge, U-Tube, Electronic Pressure Gauge, Thermometer, Tachometer, Pitot Tube, Film Gauge, Vernier Caliper

售后服务

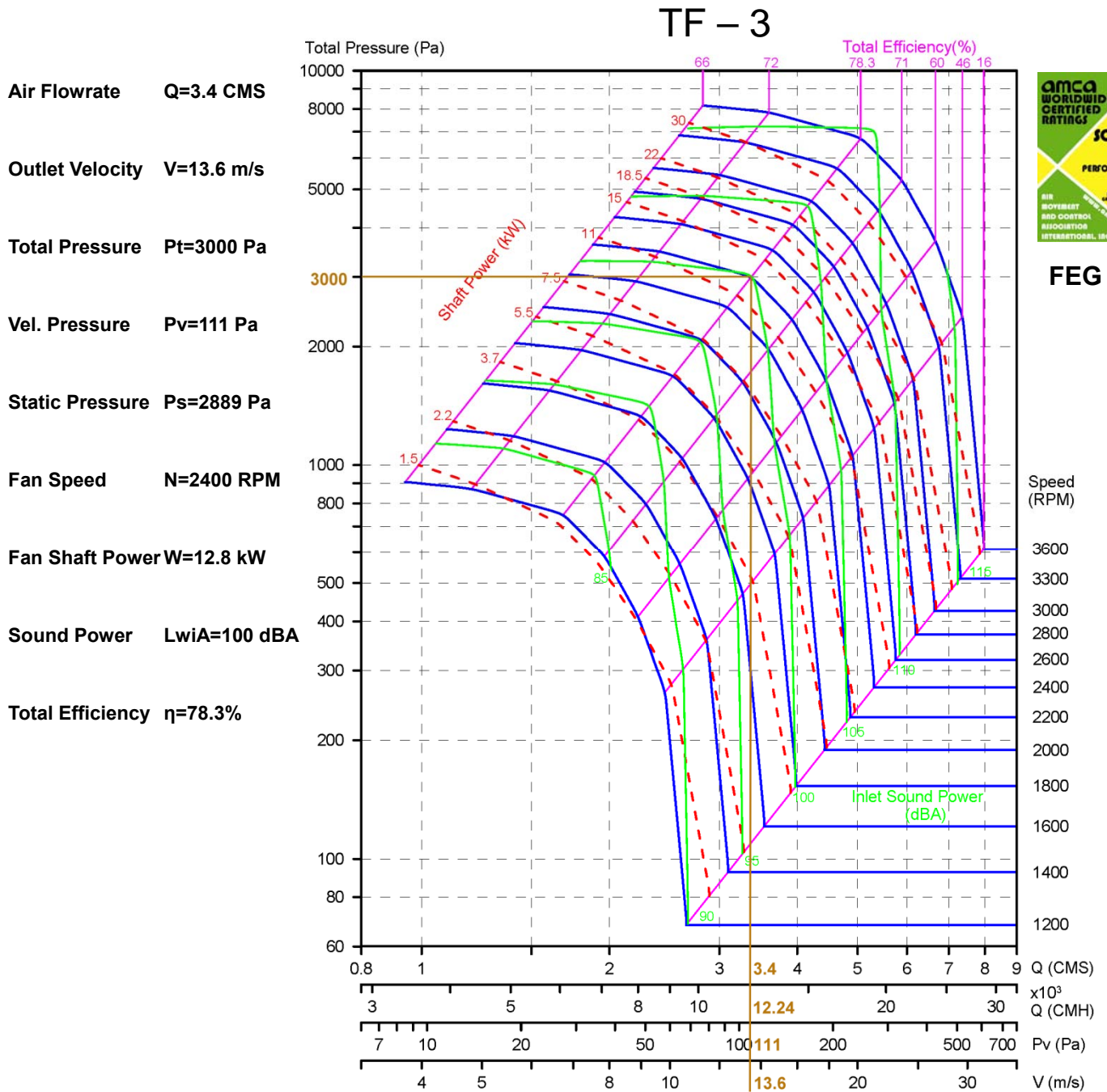
公司设有客服与维修保养部门，专职售后服务及紧急状况处理，针对客户反应案件进行故障判断、故障原因分析、故障排除，案件分类管理;同时亦可配合客户每年之定期保养。

After services and Customer Complaint Handling:

The Customer Service Department, Repair and Maintenance Department are established TO satisfy service needs and emergency handling, and they are responsible for identification and diagnosis of all customer complaints, cause analysis and trouble shooting. All complaints are categorized and established with file to offer maintenance services on regular basis.

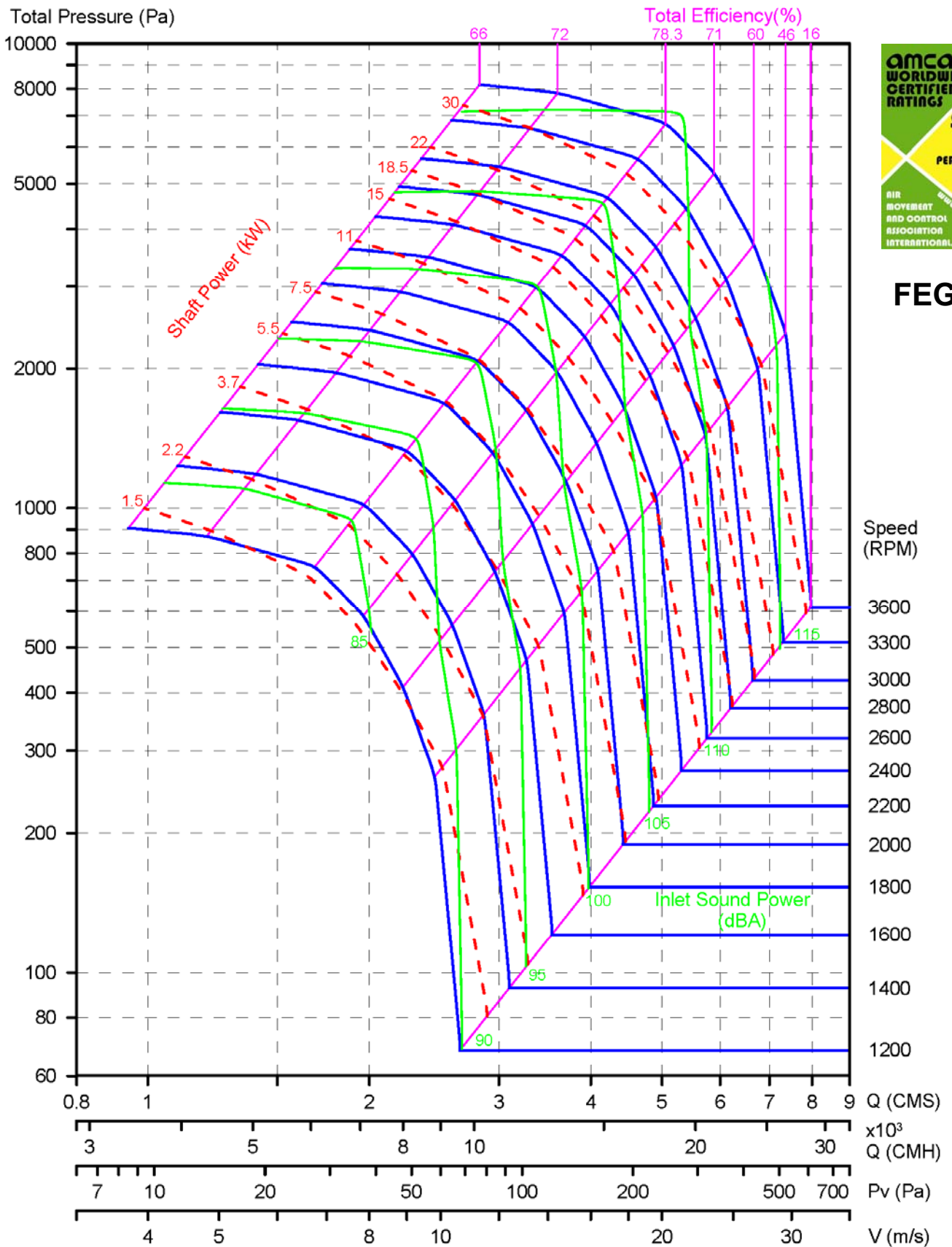
Example of Fan Curve Reading

TF – 3 (Inlet Sound Power)



Performance certified is for installation type B, free inlet, ducted outlet. Power rating (kW) does not include transmission losses. Performance ratings do not include the effects of appurtenances (accessories). The A-weighted sound ratings shown have been calculated per AMCA International Standard 301. Values shown are for inlet LwIA sound power levels for Installation Type B: free inlet, ducted outlet.

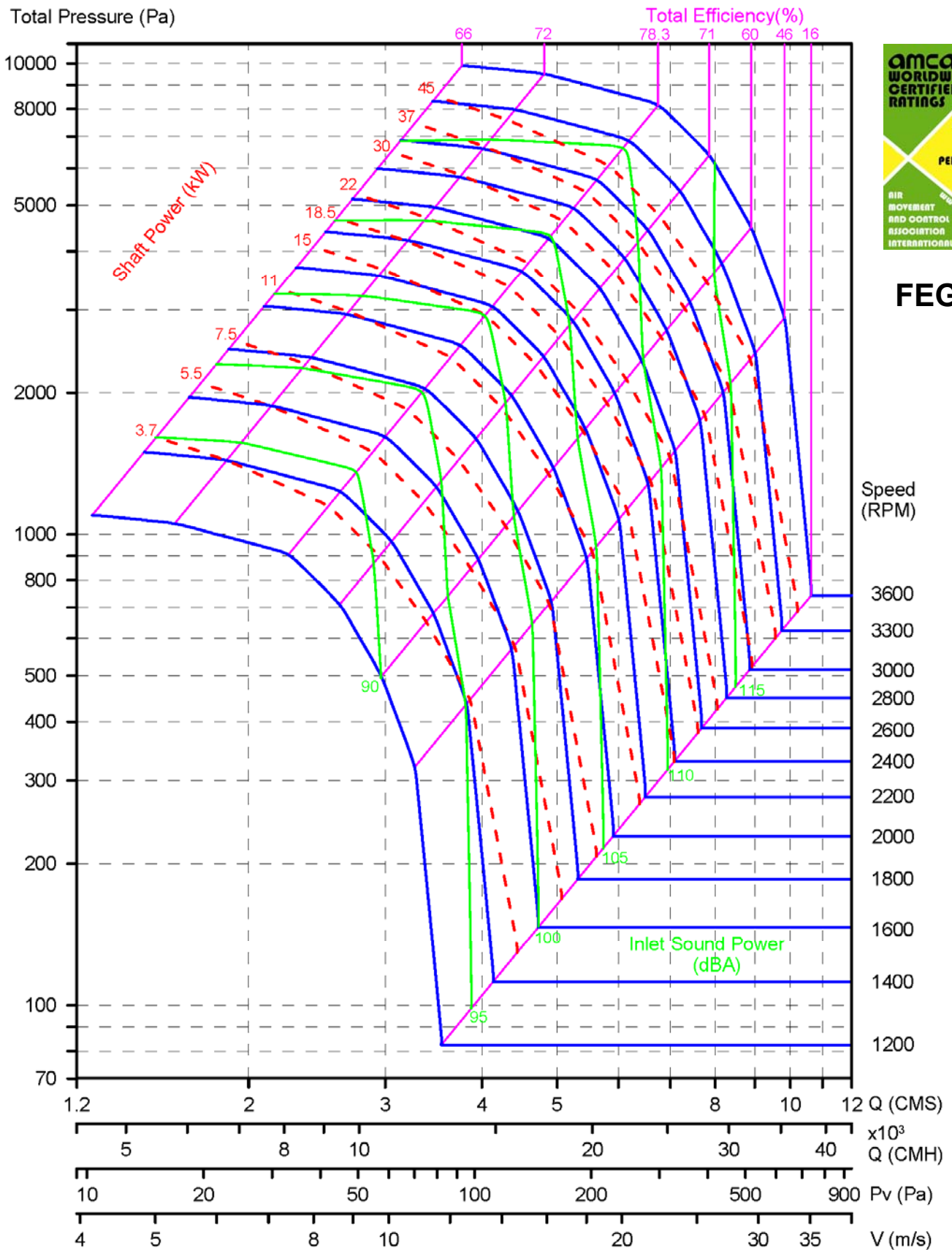
TF - 3



FEG 85

Performance certified is for installation type B, free inlet, ducted outlet. Power rating (kW) does not include transmission losses. Performance ratings do not include the effects of appurtenances (accessories). The A-weighted sound ratings shown have been calculated per AMCA International Standard 301. Values shown are for inlet LwiA sound power levels for Installation Type B: free inlet, ducted outlet.

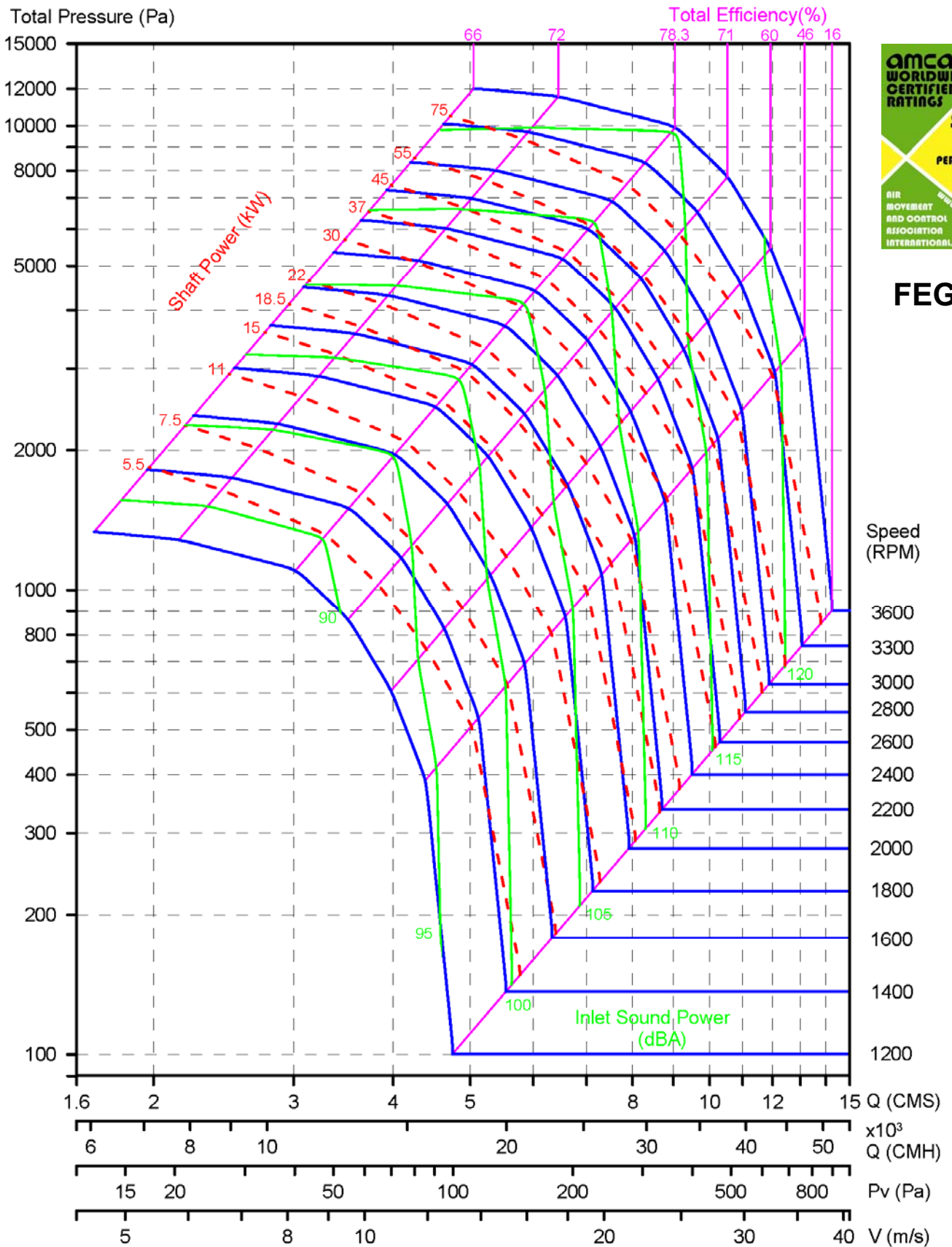
TF - 4



FEG 80

Performance certified is for installation type B, free inlet, ducted outlet. Power rating (kW) does not include transmission losses. Performance ratings do not include the effects of appurtenances (accessories). The A-weighted sound ratings shown have been calculated per AMCA International Standard 301. Values shown are for inlet LwIA sound power levels for Installation Type B: free inlet, ducted outlet.

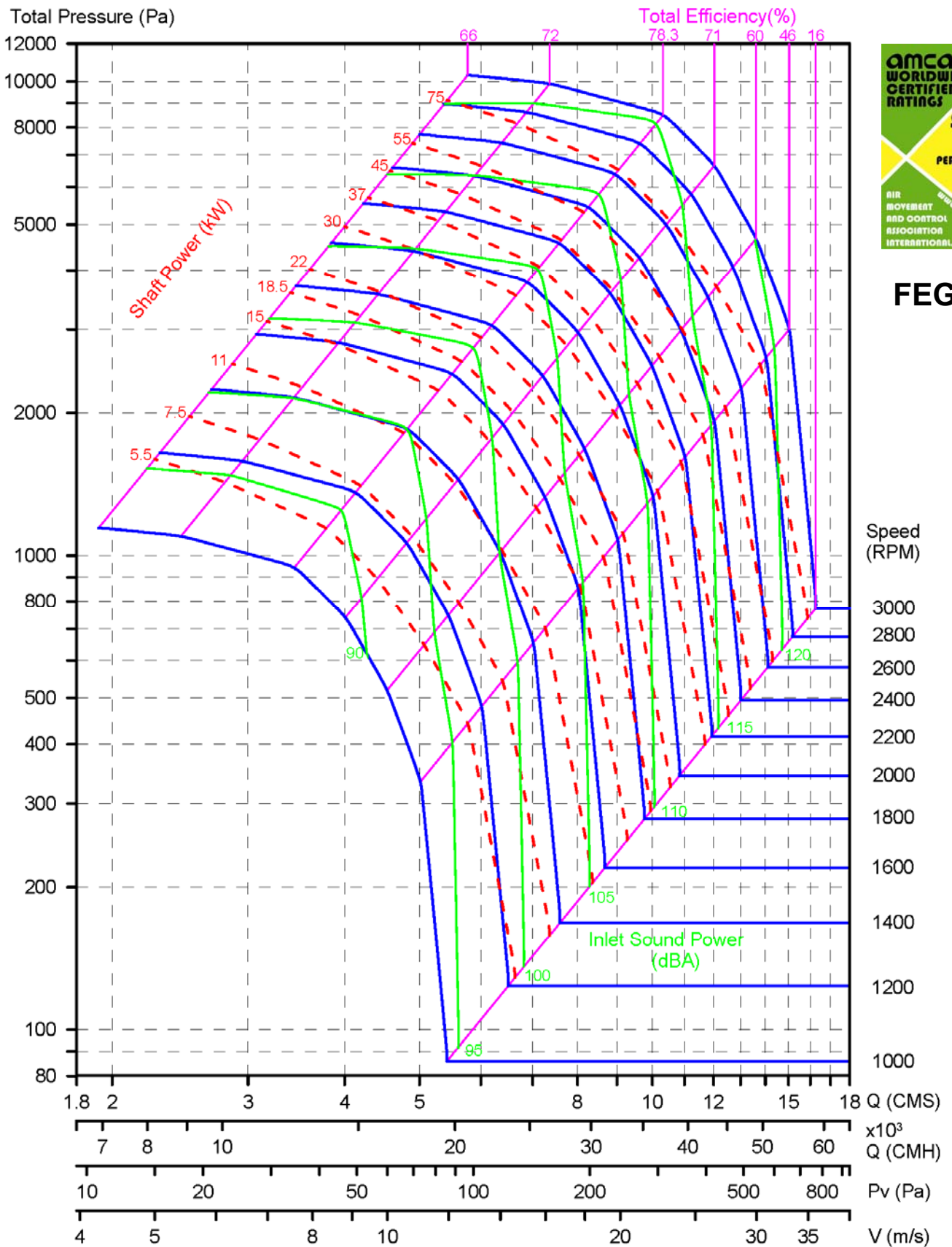
TF - 4 1/2



FEG 80

Performance certified is for installation type B, free inlet, ducted outlet. Power rating (kW) does not include transmission losses. Performance ratings do not include the effects of appurtenances (accessories). The A-weighted sound ratings shown have been calculated per AMCA International Standard 301. Values shown are for inlet Lw_{iA} sound power levels for Installation Type B: free inlet, ducted outlet.

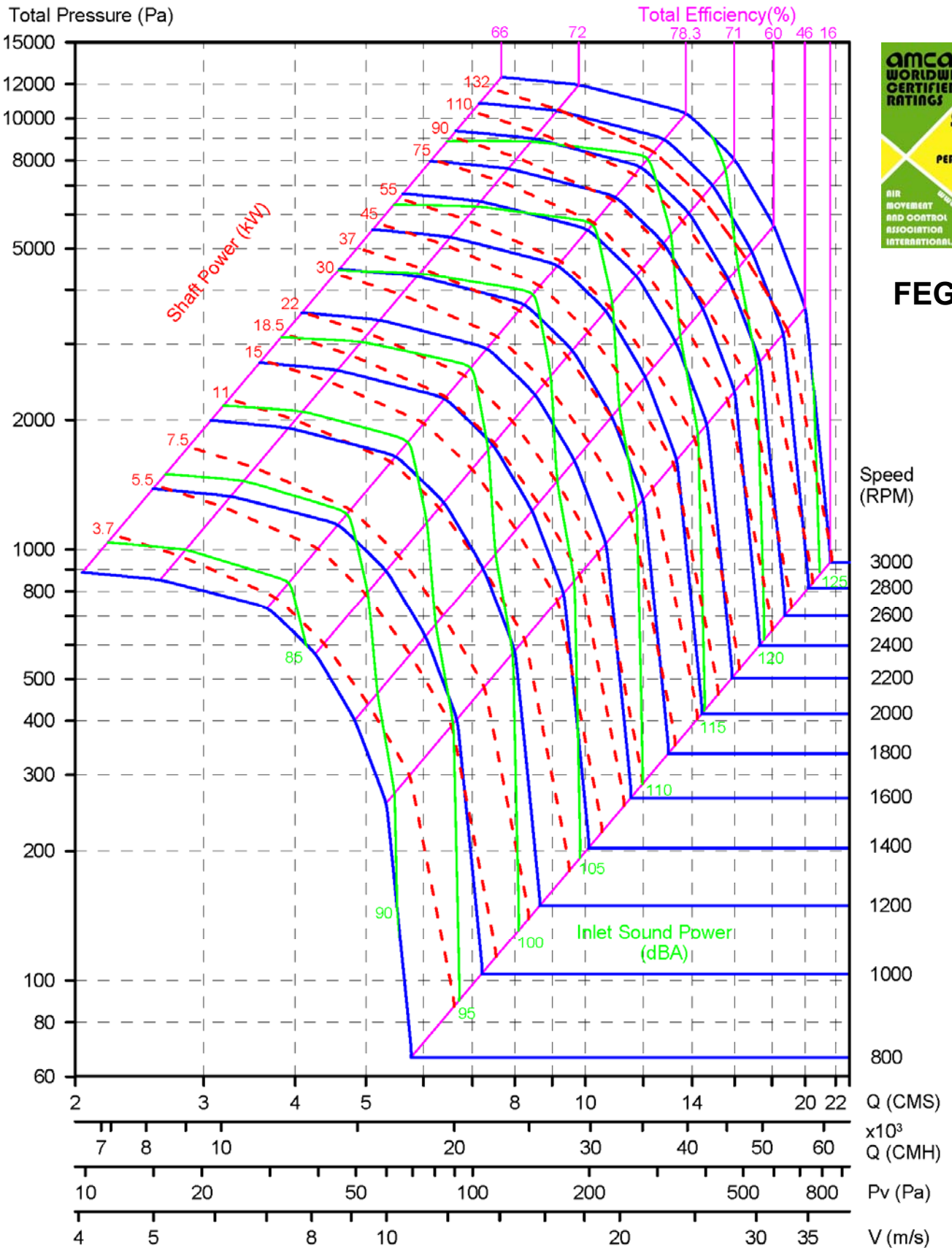
TF - 5



FEG 80

Performance certified is for installation type B, free inlet, ducted outlet. Power rating (kW) does not include transmission losses. Performance ratings do not include the effects of appurtenances (accessories). The A-weighted sound ratings shown have been calculated per AMCA International Standard 301. Values shown are for inlet LwIA sound power levels for Installation Type B: free inlet, ducted outlet.

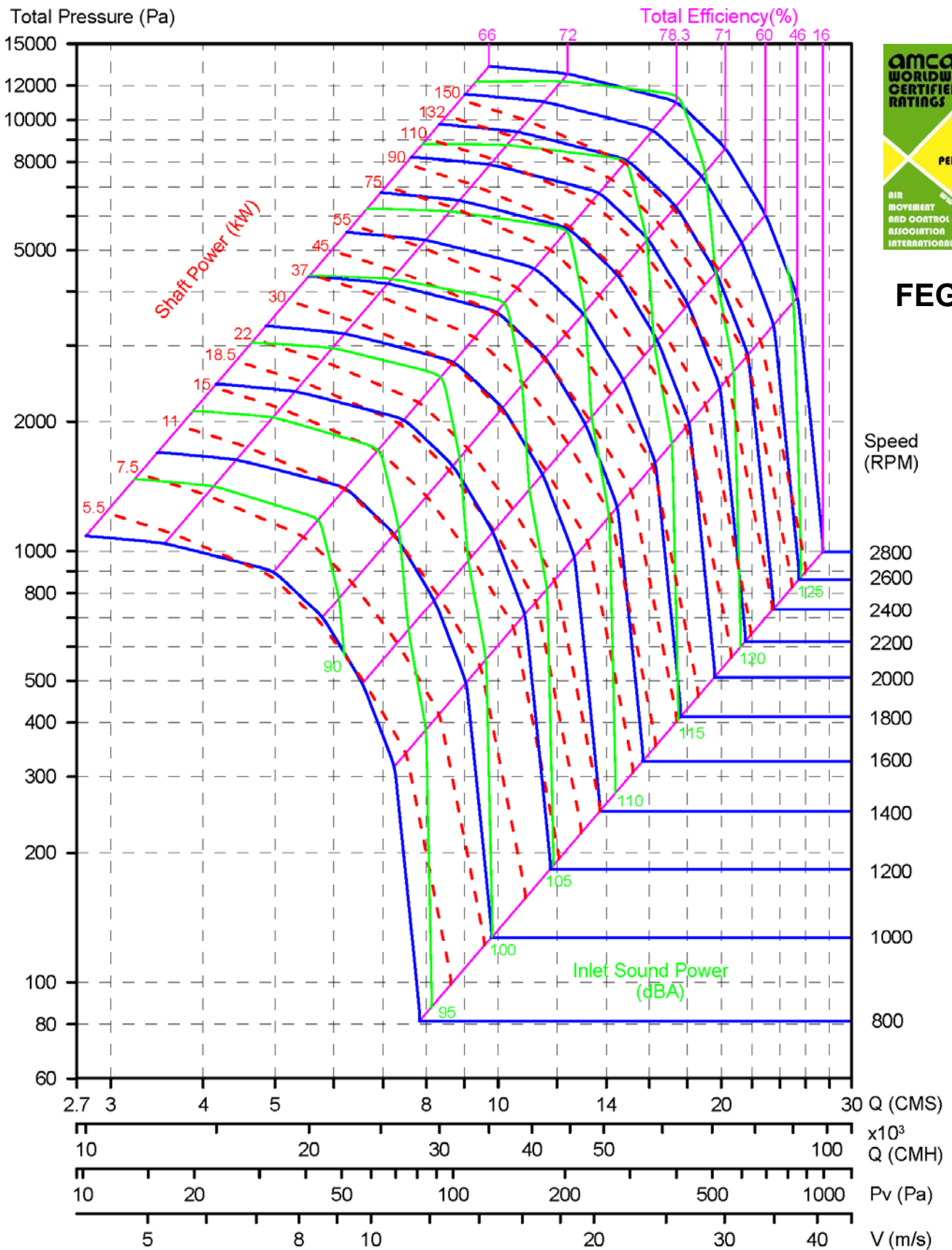
TF – 5 1/2



FEG 80

Performance certified is for installation type B, free inlet, ducted outlet. Power rating (kW) does not include transmission losses. Performance ratings do not include the effects of appurtenances (accessories). The A-weighted sound ratings shown have been calculated per AMCA International Standard 301. Values shown are for inlet LwiA sound power levels for Installation Type B: free inlet, ducted outlet.

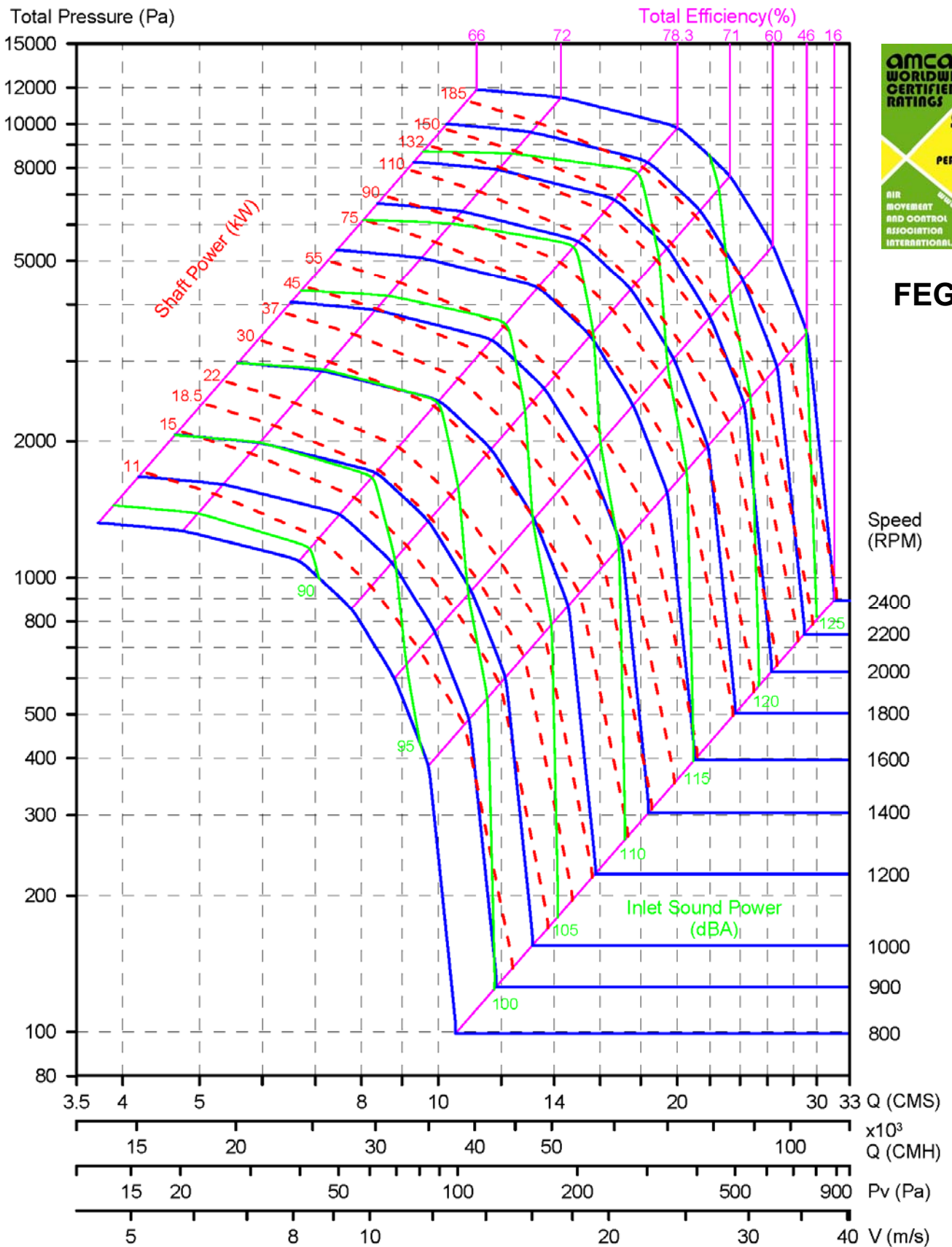
TF - 6



FEG 80

Performance certified is for installation type B, free inlet, ducted outlet. Power rating (kW) does not include transmission losses. Performance ratings do not include the effects of appurtenances (accessories). The A-weighted sound ratings shown have been calculated per AMCA International Standard 301. Values shown are for inlet LwiA sound power levels for Installation Type B: free inlet, ducted outlet.

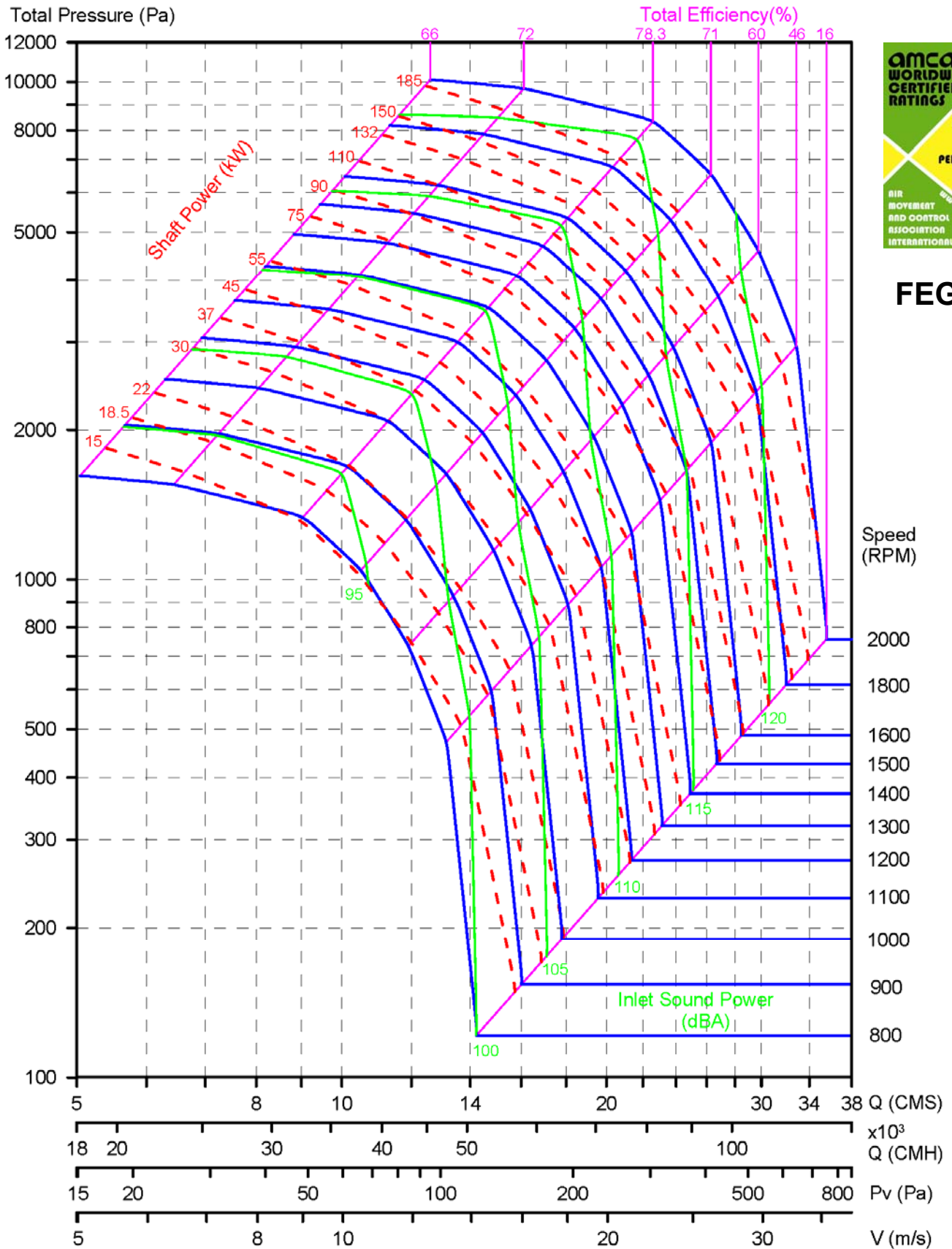
TF - 7



FEG 80

Performance certified is for installation type B, free inlet, ducted outlet. Power rating (kW) does not include transmission losses. Performance ratings do not include the effects of appurtenances (accessories). The A-weighted sound ratings shown have been calculated per AMCA International Standard 301. Values shown are for inlet LwIA sound power levels for Installation Type B: free inlet, ducted outlet.

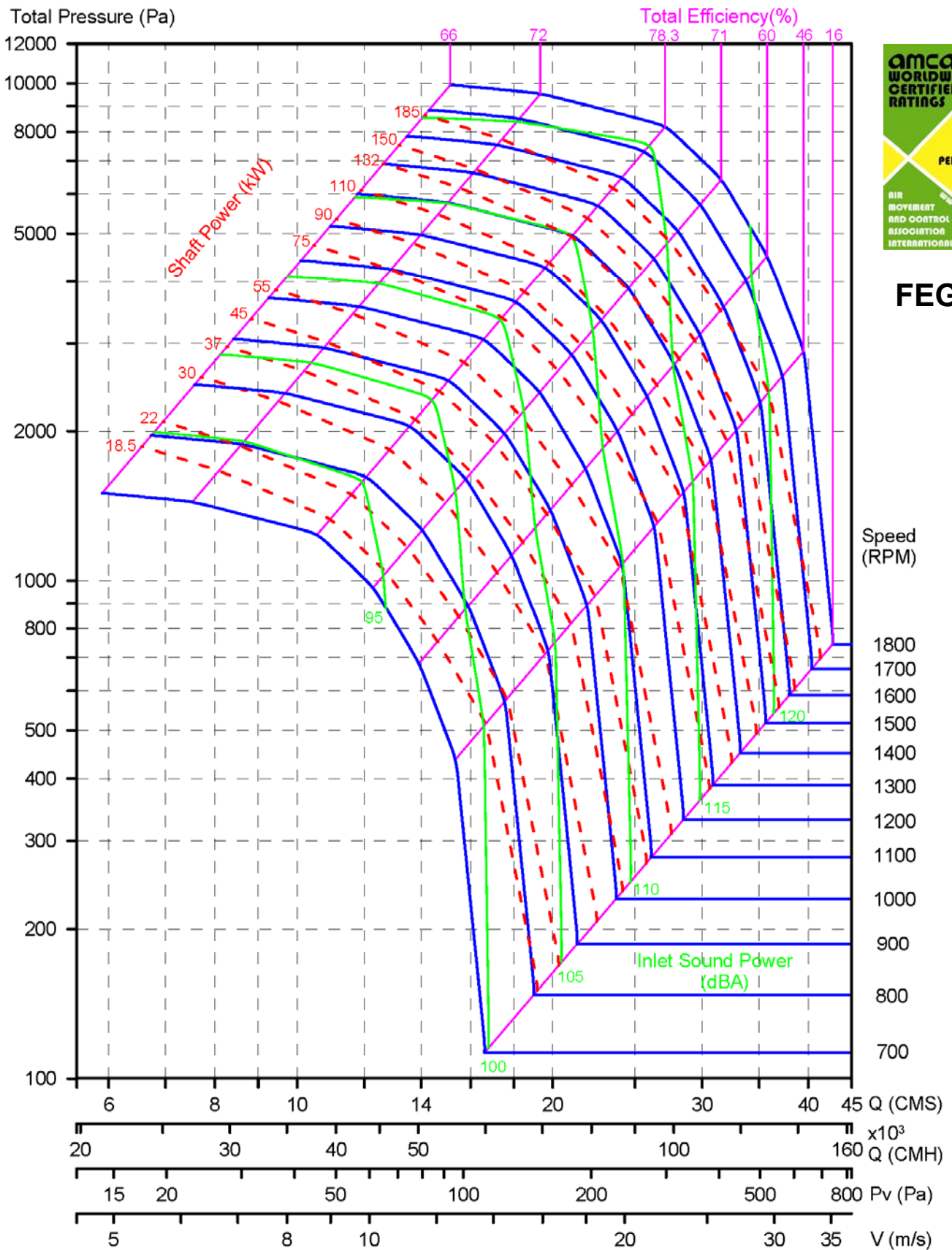
TF - 7 1/2



FEG 80

Performance certified is for installation type B, free inlet, ducted outlet. Power rating (kW) does not include transmission losses. Performance ratings do not include the effects of appurtenances (accessories). The A-weighted sound ratings shown have been calculated per AMCA International Standard 301. Values shown are for inlet Lw_{iA} sound power levels for Installation Type B: free inlet, ducted outlet.

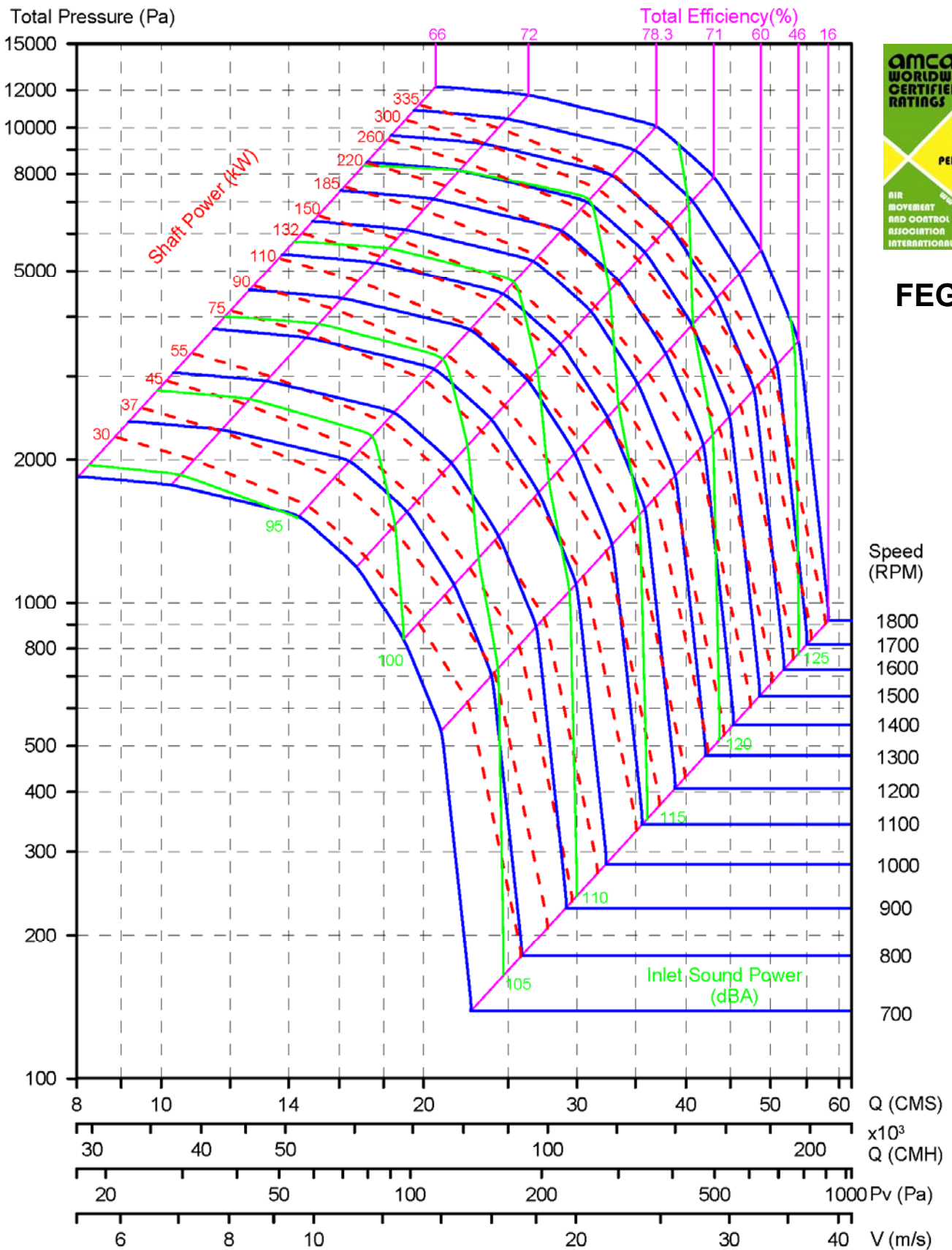
TF - 8



FEG 80

Performance certified is for installation type B, free inlet, ducted outlet. Power rating (kW) does not include transmission losses. Performance ratings do not include the effects of appurtenances (accessories). The A-weighted sound ratings shown have been calculated per AMCA International Standard 301. Values shown are for inlet Lw_iA sound power levels for Installation Type B: free inlet, ducted outlet.

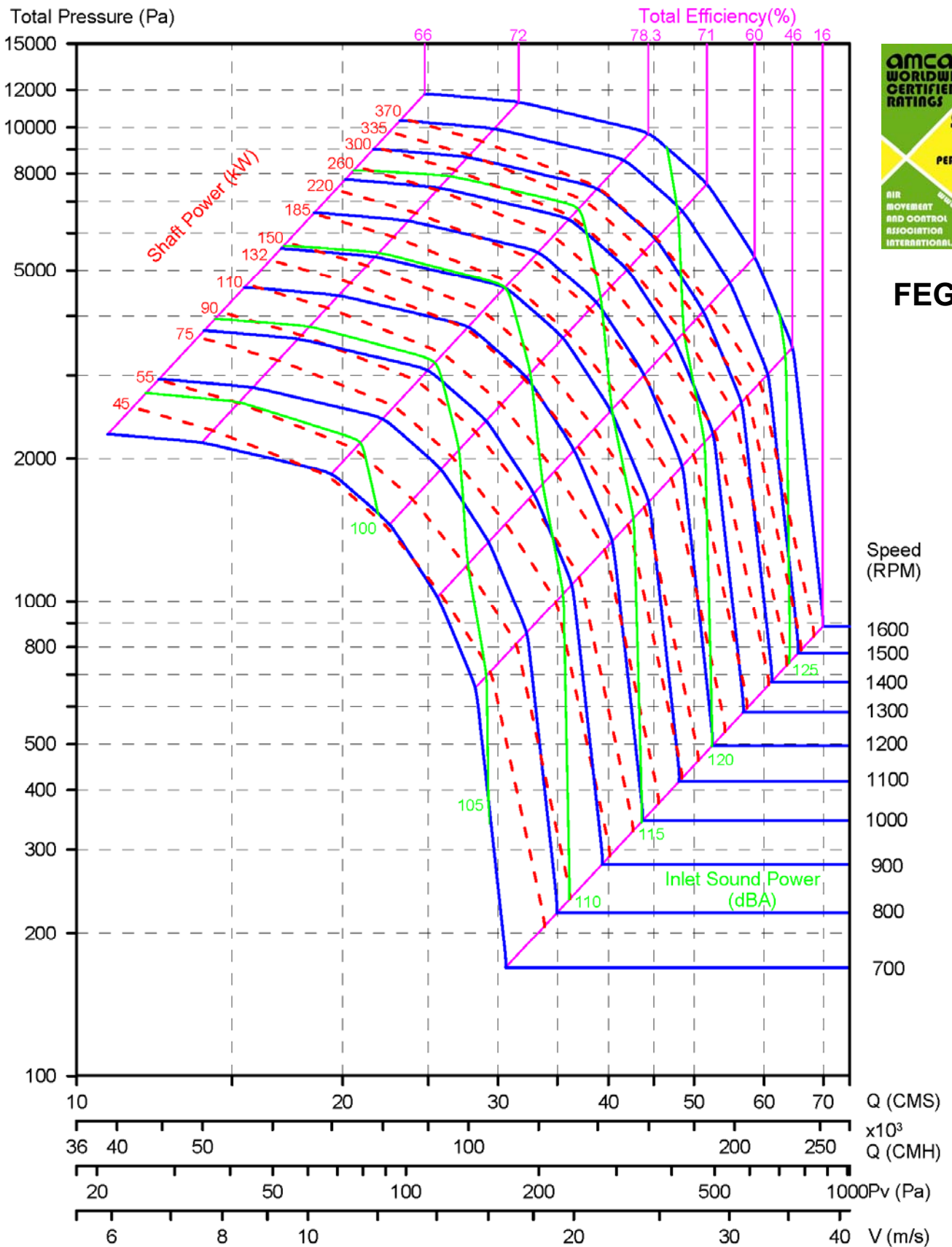
TF - 9



FEG 80

Performance certified is for installation type B, free inlet, ducted outlet. Power rating (kW) does not include transmission losses. Performance ratings do not include the effects of appurtenances (accessories). The A-weighted sound ratings shown have been calculated per AMCA International Standard 301. Values shown are for inlet LwIA sound power levels for Installation Type B: free inlet, ducted outlet.

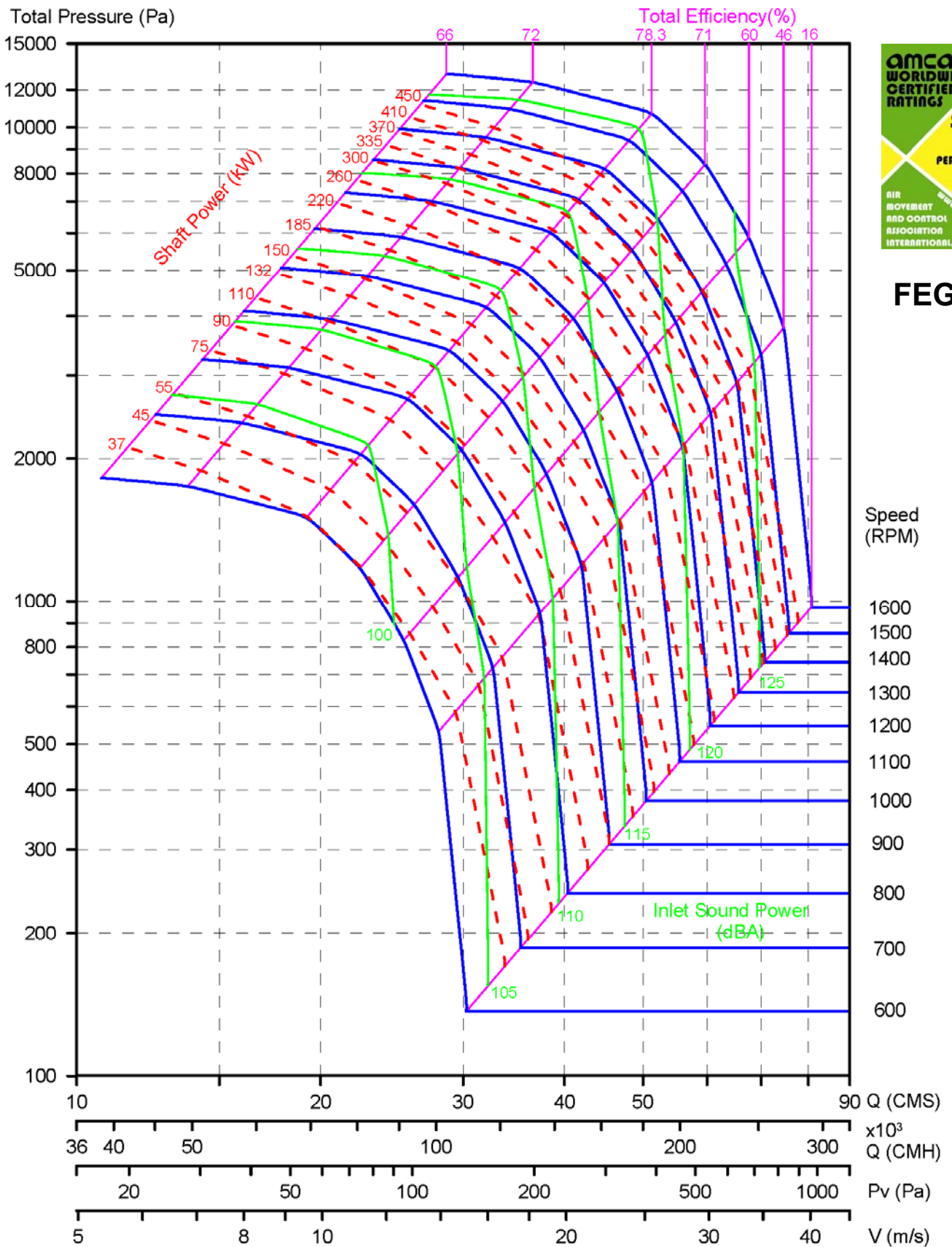
TF - 10



FEG 80

Performance certified is for installation type B, free inlet, ducted outlet. Power rating (kW) does not include transmission losses. Performance ratings do not include the effects of appurtenances (accessories). The A-weighted sound ratings shown have been calculated per AMCA International Standard 301. Values shown are for inlet LwIA sound power levels for Installation Type B: free inlet, ducted outlet.

TF - 11



FEG 80

Performance certified is for installation type B, free inlet, ducted outlet. Power rating (kW) does not include transmission losses. Performance ratings do not include the effects of appurtenances (accessories). The A-weighted sound ratings shown have been calculated per AMCA International Standard 301. Values shown are for inlet LwA sound power levels for Installation Type B: free inlet, ducted outlet.



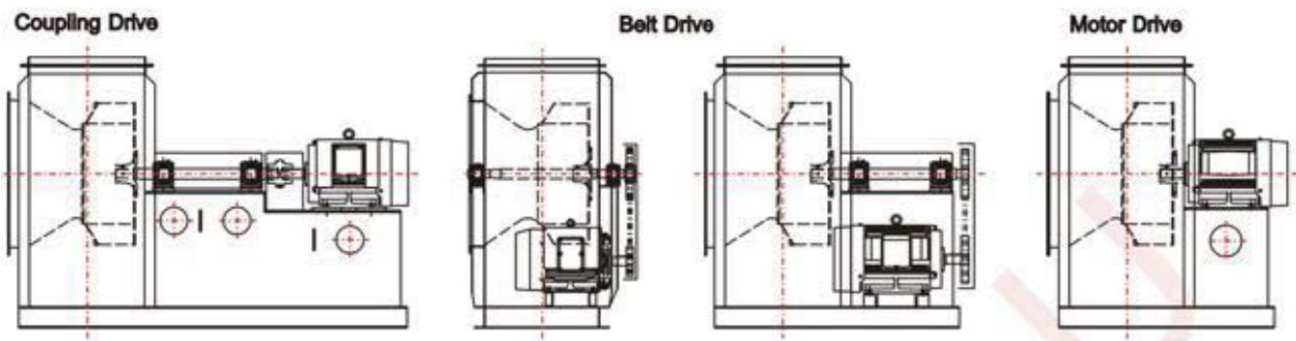
Technology Data

TF - Series

● Fan Dimension

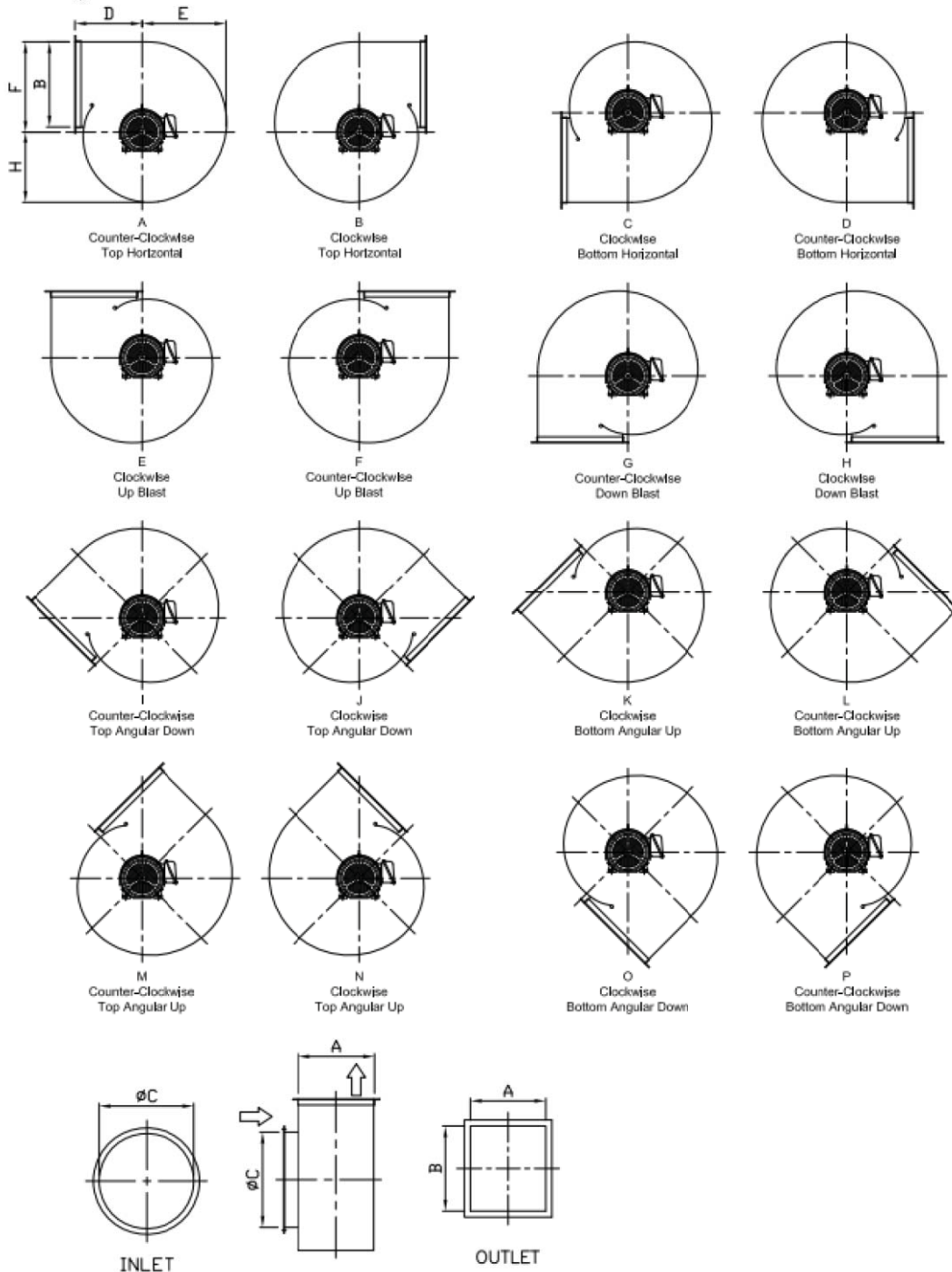
Model	Inlet	Outlet		Body			
	ØC	B	A	D	E	F	G
TF - 3	Ø640	640	390	450	561	643	479
TF - 4	Ø705	705	430	500	618	708	527
TF - 4 1/2	Ø778	778	474	550	681	780	581
TF - 5	Ø864	864	526	610	756	868	646
TF - 5 1/2	Ø950	950	580	680	832	954	711
TF - 6	Ø1050	1050	640	750	921	1055	786
TF - 7	Ø1160	1160	706	830	1015	1165	867
TF - 7 1/2	Ø1280	1280	780	880	1108	1286	930
TF - 8	Ø1410	1410	860	950	1220	1416	1024
TF - 9	Ø1560	1560	950	1050	1351	1568	1134
TF - 10	Ø1730	1730	1050	1150	1494	1734	1254
TF - 11	Ø1820	1820	1100	1250	1569	1825	1317

● Drive Type:





● Rotating Orientation:



无锡久朝环保设备有限公司

Wuxi Chiu Chau Environmental Protection Equipment Co.,Ltd

地址: 无锡市新吴区城南路 233 号 A 幢

Add.: No. 233 A South Chengnan Road, New District, Wuxi, Jiangsu,China

Tel: 0510-88550351

Email: c.c.fan@wxchiuchau.com

Http:// www.wxchiuchau.com