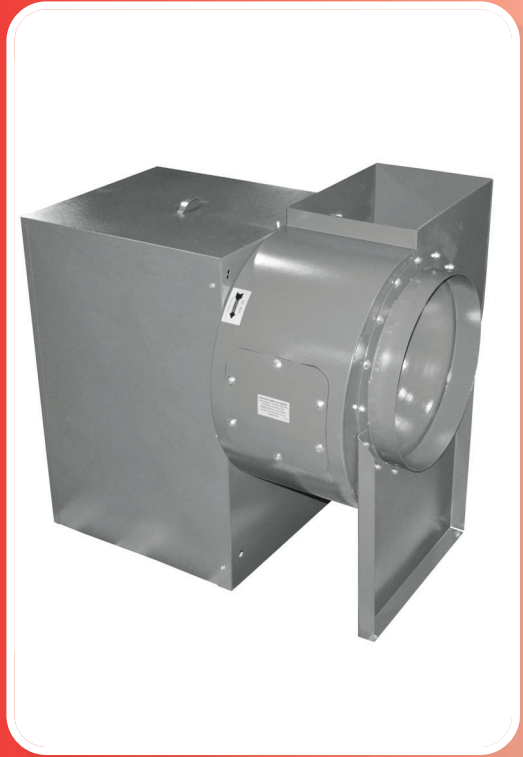


[®]
Dayton



Belt Drive Utility Blowers

Models 806XW2 thru 806XX0



Dayton

**PLEASE READ AND SAVE
THESE INSTRUCTIONS.
READ CAREFULLY
BEFORE ATTEMPTING
TO ASSEMBLE, INSTALL,
OPERATE OR MAINTAIN THE
PRODUCT DESCRIBED.**

**PROTECT YOURSELF AND
OTHERS BY OBSERVING ALL
SAFETY INFORMATION. FAILURE
TO COMPLY WITH INSTRUCTIONS
COULD RESULT IN PERSONAL
INJURY AND/OR PROPERTY
DAMAGE! RETAIN INSTRUCTIONS
FOR FUTURE REFERENCE.**

**PLEASE REFER TO BACK COVER
FOR INFORMATION REGARDING
DAYTON'S WARRANTY AND OTHER
IMPORTANT INFORMATION.**

Model #: _____

Serial #: _____

Purch. Date: _____

Printed in Canada
03375 Version 01 05/2023
© 2023 Dayton Electric Manufacturing Co.
All Rights Reserved

BEFORE YOU BEGIN

General Instructions:

The purpose of this manual is to aid in the proper installation and operation of the blowers. These instructions are intended to supplement good general practices and are not intended to cover detailed instruction procedures. It is the responsibility of the purchaser to ensure that the installation and maintenance of this equipment is performed by qualified personnel following all local and National electrical safety codes. (Including but not limited to National Electric Code (NEC), NFPA (National Fire Protection Agency), and Canadian Electric Code (CEC) in Canada.



Electrical Requirements For Motor Supplied By Others:

- The motor voltage and ampere rating must be checked for compatibility with the electrical supply prior to final electrical connection. Supply wiring to the blower must be properly fused, and conform to local and national electrical codes.



Tools:

- Impact Gun and Socket Set
- Straight Edge
- Hex Keys
- Multimeter
- Lock-Out Tag-Out

UNPACKING



Contents:

- Belt Drive Utility Blower Less Motor and Drives (1)
- Operating Instructions and Parts Manual (1)



Inspect:

- Inspect unit for damage and report any shipping damage to carrier. Check all fasteners and re-tighten as required. Rotate the blower wheel by hand to ensure free rotation. If rubbing occurs, loosen the inlet venturi bolts, re-position the venturi to establish clearance, re-tighten bolts.
- Inspect all shipments carefully for damage. **THE RECEIVER MUST NOTE ANY DAMAGE ON THE CARRIER'S BILL OF LADING AND FILE A CLAIM IMMEDIATELY WITH THE FREIGHT COMPANY.**
- See General Safety Instructions on page 2, and Cautions and Warnings as shown.



GENERAL SAFETY INSTRUCTIONS

Dayton Utility Exhaust Blowers are designed for commercial kitchen exhaust or industrial applications. These blowers are spark resistant and can handle a maximum inlet temperature of 300°F.

Rotating parts on blowers should not be exposed. Where these components are not protected by ductwork, cabinets or covers, appropriate guards should be installed to restrict exposure to rotating parts. Access doors should not be opened with the blower operating to avoid foreign objects being drawn into the system. On initial start-up a careful inspection should be carried out to ensure no foreign material is present which could become airborne in the system.

Read installation and operation instructions carefully before attempting to install these blowers. Failure to comply with instructions could result in personal injury and/or property damage.

▲ WARNING *Ensure power supply is disconnected and locked out prior to making electrical connections. Before connecting the motor to the electrical supply, check the electrical characteristics and wiring instructions as indicated on the motor nameplate or inside the conduit box cover to ensure proper voltage and phase. Complete electrical connections as indicated.*

▲ WARNING *A ground wire must be connected from the motor housing to a suitable electrical ground.*

▲ WARNING *A ground wire must be connected from the unit chassis to a suitable electrical ground.*

1. The blower contains rotating parts and requires electrical service. Appropriate safety precautions should be taken during installation, operation and maintenance.
2. All electrical work must be performed, in accordance with all applicable electrical codes, by a qualified electrician.
3. Prior to wiring, ensure that the power supply is locked in the OFF position and that the motor nameplate voltage and the supply voltage match. Follow all local electrical and safety codes in the United States, as well as the National Electrical Code (NEC) and National Fire Protection Agency (NFPA) where applicable. Follow the Canadian Electric Code (CEC) in Canada.
4. Be sure to keep all electrical wiring clear of any moving parts.
5. Tighten all nuts, bolts and setscrews to the proper torque settings, as some may have loosened during shipping.
6. Before starting the blower, ensure that the wheel rotates freely.
7. Ensure correct rotation of the blower wheel as this is critical to the proper operation of the blower. Reference the arrow on the blower housing.
8. Ensure that belts are aligned and tensioned properly.
9. Ensure that all protective guards and other safety devices are installed properly prior to blower start-up.

SPECIFICATIONS

Dimensions (inches)

	806XW2	806XW3	806XW4	806XW5	806XW6	806XW7	806XW8	806XW9	806XW10
A	23 5/8	30 3/16	30 15/16	31 15/16	34 11/16	35 7/8	42 15/16	44 3/8	49 15/16
B	8 3/8	9 15/16	10 3/4	11 3/4	12 11/16	13 13/16	14 15/16	16 3/8	17 15/16
C	19 3/16	27 7/16	24 1/2	27 1/4	29 15/16	33 3/16	36 7/16	40 7/16	44 11/16
D	11 5/16	13 1/16	14 3/8	15 13/16	17 1/2	19 3/8	21 3/16	23 9/16	26 1/8
E	8 1/4	9 7/8	10 3/4	12 3/4	13 1/8	14 1/2	15 3/4	17 3/4	19 3/8
F	27 3/4 No Leg	33 5/16	34 1/4	36 1/4	36 5/8	38 1/4	46 3/8	48 7/16	51 5/16
G	15 5/6	20 3/16	20 3/16	20 3/16	22	22	28	28	32 1/8
H	21 5/16	29 1/8	29 1/8	29 1/8	30 15/16	30 15/16	40 15/16	40 15/16	46 11/16
K	13 1/4	16 3/4	16 3/4	16 3/4	16 3/4	16 3/4	25 1/8	25 1/8	28 15/16
L	17 1/2	20 9/16	22 7/16	24 7/8	26 15/16	29 9/16	32 3/16	35 9/16	39 1/8
N Shaft Dia.	3/4	1	1	1	1 3/16	1 3/16	1 3/16	1 3/16	1 7/16
O	11	12 7/16	14 3/8	15 7/8	17 3/8	19 3/8	21 1/4	23 5/8	26
P	17 1/4	21 3/16	21 1/4	21 3/16	21 1/4	21 1/2	27 5/8	27 5/8	28 15/16
S	11 5/8	11 1/2	11 1/2	11 1/2	11 1/2	11 1/2	14 9/16	14 9/16	18 5/16
T	11 1/4	14 3/4	14 3/4	14 3/4	14 3/4	14 3/4	22 3/4	22 3/4	26 3/8
V	-	13 1/16	14	16	16 1/2	17 7/8	19 3/4	21 13/16	23 3/8
Wheel Diameter	10 1/2	12 1/4	13 1/2	15	16 1/2	18 1/4	20	22 1/4	24 1/2

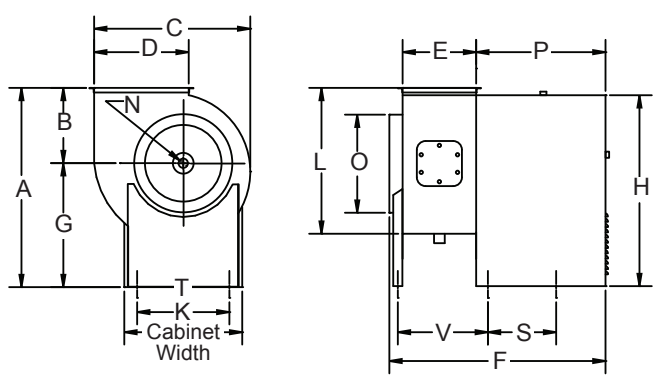


Figure 1 - Belt Drive Utility Blowers Dimensions

SPECIFICATIONS

**806XW2, 806XW3, 806XW4, 806XW5, 806XW6,
806XW7, 806XW8, 806XW9, 806XX0**

Max. Inlet Temp.

300°F

Recommended NEMA 1
Disconnect Switch

1H400 (2 pole, 115/230V, 2 HP max)
1H401 (3 pole, 230V, 7-1/2 HP max)
1H401 (3 pole, 460V, 10 HP max)

Recommended NEMA 4
Disconnect Switch

1H408 (2 pole, 115/230V, 2 HP max)
1H409 (3 pole, 230V, 7-1/2 HP max)
1H409 (3 pole, 460V, 10 HP max)

PERFORMANCE

CFM Air Delivery @ Static Pressure Shown

Model	HP	RPM	Max BHP	0.25"	0.50"	0.75"	1.00"	2.00"	3.00"
806XW2	1/2	1752	0.24	1140	1040	914	765	-	-
	1/2	1930	0.31	1275	1184	1084	963	-	-
	1/2	2199	0.46	1475	1400	1315	1225	545	-
	3/4	2540	0.70	1725	1660	1590	1520	1155	-
	1	2780	0.91	2780	1837	1775	1715	1415	970
	1 1/2	3195	1.38	2200	2145	2095	2045	1810	1510
	2	3508	1.82	2425	2375	2330	2285	2085	1840
806XW3	1/3	1541	0.31	1550	1410	1260	1095	-	-
	1/2	1778	0.47	1825	1710	1585	1460	-	-
	3/4	2042	0.70	2125	2030	1925	1810	1265	-
	1	2242	0.92	2350	2265	2165	2075	1665	-
	1 1/2	2555	1.35	2700	2620	2550	2470	2125	1660
	2	2825	1.81	3000	2925	2865	2790	2475	2175
	3	3179	2.57	3390	3340	3260	3210	2940	2665
806XW4	1/2	1530	0.44	2075	1940	1800	1650	-	-
	3/4	1762	0.66	2425	2310	2195	2075	1320	-
	1	1945	0.89	2700	2590	2490	2385	1860	-
	1 1/2	2215	1.30	3100	3005	2900	2825	2435	1820
	2	2452	1.76	3450	3365	3285	3200	2865	2445
	3	2792	2.58	3950	3875	3805	3735	3445	3135
806XW5	3/4	1468	0.65	2750	2600	2440	2275	-	-
	1	1613	0.86	3050	2925	2760	2630	1760	-
	1 1/2	1869	1.33	3575	3445	3330	3220	2670	1080
	2	2054	1.75	3950	3840	3725	3630	3160	2480
	3	2338	2.58	4525	4420	4330	4235	3855	3400
	5	2525	3.24	4900	4810	4730	4640	4280	3895

PERFORMANCE (CONTINUED)

Model	HP	RPM	Max BHP	CFM Air Delivery @ Static Pressure Shown					
				0.25"	0.50"	0.75"	1.00"	2.00"	3.00"
806XW6	3/4	1261	0.67	3125	2935	2720	2490	-	-
	1	1388	0.89	3475	3290	3120	2930	1140	-
	1 1/2	1589	1.32	4025	3850	3730	3560	2770	-
	2	1754	1.77	4475	4325	4200	4050	3430	2350
	3	2005	2.63	5150	5025	4890	4780	4280	3655
	5	2299	3.94	5940	5825	5735	5620	5190	4730
806XW7	3/4	1068	0.68	3550	3285	3025	2700	-	-
	1	1174	0.89	3950	3720	3470	3210	-	-
	1 1/2	1342	1.32	4575	4380	4160	3960	2740	-
	2	1477	1.75	5075	4880	4690	4525	3620	-
	3	1689	2.60	5850	5680	5500	5360	4680	3690
	5	1898	3.67	6610	6450	6350	6180	5600	4925
806XW8	1	928	0.68	4100	3760	3410	2940	-	-
	1	1017	0.89	4550	4245	3930	3570	-	-
	1 1/2	1171	1.34	5320	5080	4810	4525	2450	-
	2	1283	1.75	5875	5640	5400	5150	3900	-
	3	1468	2.60	6775	6570	6360	6175	5250	3600
	5	1741	4.29	8100	7925	7775	7590	6875	6050
	7 1/2	1896	5.53	8850	8700	8560	8390	7750	7050
806XW9	1	774	0.68	4650	4175	3650	2900	-	-
	1	849	0.89	5175	4775	4325	3800	-	-
	1 1/2	975	1.33	6050	5700	5350	4950	-	-
	2	1077	1.77	6750	6440	6125	5800	3625	-
	3	1232	2.63	7800	7525	7250	6990	5680	-
	5	1456	4.29	9300	9050	8840	8625	7670	6450
	7 1/2	1674	6.48	10750	10560	10380	10150	9370	8460
806XX0	1	660	0.69	5225	4625	3880	-	-	-
	1	728	0.91	5875	5340	4770	3930	-	-
	1 1/2	832	1.34	6850	6390	5930	5430	-	-
	2	914	1.76	7600	7180	6775	6330	-	-
	3	1046	2.61	8800	8450	8100	7725	5850	-
	5	1235	4.26	10500	10190	9900	9620	8325	6360
	7 1/2	1392	6.06	11900	11650	11375	11120	10025	8740

Performance certified is for installation type B: Free inlet, Ducted outlet. Power rating (BHP) does not include transmission losses. Performance ratings do not include the effects of appurtenances (accessories).

PERFORMANCE

TYPICAL MAXIMUM CFM @SP

	806XW2	806XW3	806XW4	806XW5	806XW6	806XW7	806XW8	806XW9	806XX0
1" SP	2300	3200	3900	4775	5700	6175	8400	10000	11100
2" SP	2050	2950	3625	4450	5350	5600	7775	9550	10100
3" SP	1700	2675	3400	4075	4900	4925	7050	8700	8800
4" SP	1500	2350	2975	3650	4300	3900	6200	7600	6600
5" SP	1300	1925	2450	3000	3500	-	4650	5550	-
Min HP	1/4	1/3	1/2	1/2	3/4	3/4	1	1	1 1/2
Max HP	2	3	5	5	7 1/2	7 1/2	7 1/2	10	15

Power rating (BHP) does not include transmission losses. Performance certified is for installation type B: Free inlet, Ducted outlet. Performance ratings do not include the effect of appurtenances (accessories). CFM values listed above are summarized for convenience.



UL705 POWER VENTILATOR
FOR RESTAURANT
EXHAUST APPLIANCES



Dayton Electric Mfg. Co. certifies that the blowers shown herein are licensed to bear the AMCA Seal. The ratings shown are based on tests and procedures performed in accordance with AMCA Publication 211 and comply with the requirements of the AMCA Certified Ratings Program.

NOTE: UL705 Supplement SC formerly UL762

INSTALLATION INSTRUCTIONS

⚠ WARNING

It is the responsibility of the purchaser to ensure that the installation and maintenance of this equipment is performed by qualified personnel following all local and National electrical safety codes. (Including but not limited to National Electric Code (NEC), NFPA (National Fire Protection Agency), and Canadian Electric Code (CEC) in Canada.

1. Secure the exhauster to the curb cap or sleepers (supplied by others) through the 3/4" diameter holes provided in the base of the motor compartment and leg. For proper motor compartment ventilation, if the unit is mounted on a floor or solid surface, provide a minimum 1" clearance to the motor cabinet bottom. Install spring isolators or duct isolators where required.
2. Complete all subsequent duct connections.
3. Rotate the blower wheel by hand. It should not rub against the housing inlet. If rubbing occurs, loosen the setscrews on the wheel hub and shift the wheel to obtain clearance. Re-tighten all set-screws.

INSTALLATION INSTRUCTIONS (CONTINUED)

4. Insert the four motor nuts and bolts up through the bottom of the sliding motor platform to match the bolting configuration of the motor to be installed. The master hole for smaller motor frames is located at the top left hand corner of the motor platform furthest from the blower housing. The master hole for 213T, 215T and 254T frame motors is 2" inset from the fore mentioned master hole for smaller frame motors.
5. Mount the blower sheave on the blower shaft and tighten its set-screw securely on the key of the shaft.
6. Mount the motor sheave on the motor shaft. Leave some clearance between the sheave and the motor end bell. Tighten the sheave set-screws on the key of the motor shaft.
7. With the motor platform in its highest position install the V belt within the sheave grooves. Adjust the sheave on the blower shaft to ensure proper alignment (see Figure 2) and secure in place. A straight edge across the face of the driven pulley should be parallel to the belt once proper alignment has been achieved.

▲ WARNING *Excessive belt tension is the most frequent cause of bearing wear and resulting noise. Proper belt tension is critical for quiet, efficient operation.*

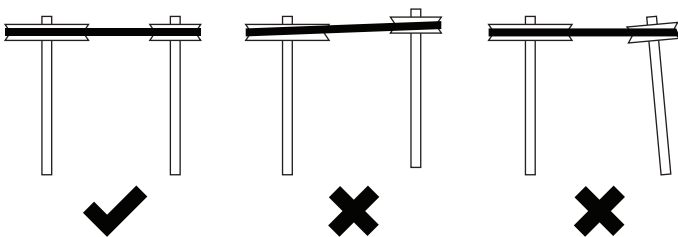


Figure 2 - Pulley Alignment

8. Loosen the four clamping bolts around the motor platform and slide the motor platform within the slotted rails to adjust belt tension. Ideal belt tension is the lowest tension at which the belt will not slip during start up. A rule of thumb suggests that 3/4" of deflection mid span medium finger pressure (2-3 lbs) for every foot of span is approximately proper belt tension. Tighten the motor platform by clamping the bolts once proper belt tension has been achieved.
9. These blowers are shipped in the upblast position and are complete with cleanout door and drain.

While other orientations are possible (see Figure 3) with the field rotatable housing, they may not meet the necessary code/UL requirements depending on the application.

INSTALLATION INSTRUCTIONS (CONTINUED)

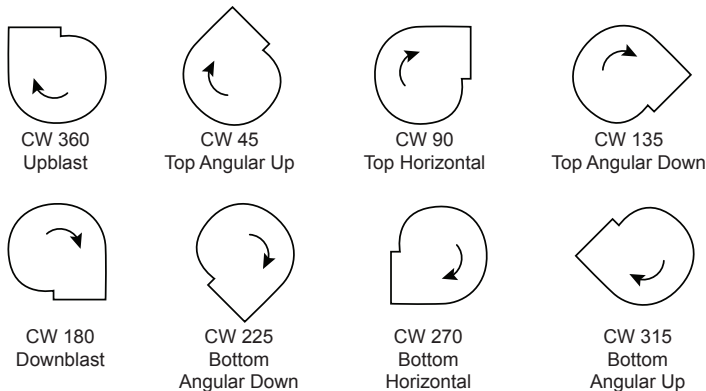


Figure 3

⚠ WARNING *It is the responsibility of the purchaser to ensure that the installation and maintenance of this equipment is performed by qualified personnel following all local and National electrical safety codes. (Including but not limited to National Electric Code (NEC), NFPA (National Fire Protection Agency), and Canadian Electric Code (CEC) in Canada.*

ELECTRICAL INSTALLATION

⚠ WARNING *Ensure power supply is disconnected and locked out prior to making electrical connections. Before connecting the motor to the electrical supply, check the electrical characteristics and wiring instructions as indicated on the motor nameplate or inside the conduit box cover to ensure proper voltage and phase. Complete electrical connections as indicated.*

⚠ WARNING *A ground wire must be connected from the motor housing to a suitable electrical ground.*

⚠ WARNING *A ground wire must be connected from the unit chassis to a suitable electrical ground.*

OPERATION

1. Refer to the motor (supplied by others) nameplate for wiring information and motor specifications.
2. After electrical connections are completed, energize the unit momentarily and ensure that the rotation of the wheel is correct. Correct wheel rotation is critical. Refer to rotation label on fan housing for correct wheel rotation direction.
3. With the air systems in full operation and all ducts and access panels attached, measure current input to the motor and ensure that it is less than the rated full load motor amperage.
4. Proper adjustment to the belt tension is critical for quiet efficient operation.

TROUBLESHOOTING GUIDE

Symptom	Possible Cause(s)	Corrective Action
Vibration	<ol style="list-style-type: none"> 1. Loose sheaves 2. Loose fasteners 3. Wheel out of balance 4. Sheaves not properly aligned 	<ol style="list-style-type: none"> 1. Check sheaves to ensure fasteners are secure 2. Secure all fasteners 3. Check wheel for debris build up. Clean as needed 4. Check drive set to ensure proper alignment. Correct as needed
Blower does not operate	<ol style="list-style-type: none"> 1. Lack of electricity to blower 2. Electric motor wired incorrectly 3. Broken or missing belt 4. Defective motor 	<ol style="list-style-type: none"> 1. Verify correct electrical service to blower 2. Consult motor nameplate to ensure correct wiring. Correct as needed 3. Replace with correctly sized belt 4. Replace motor
Excessive Noise	<ol style="list-style-type: none"> 1. Loose fasteners 2. Sheaves not properly aligned 3. Wheel out of balance 4. Worn belt 5. Bearings need lubrication 	<ol style="list-style-type: none"> 1. Check all fasteners and set screws and tighten as required 2. Check drive set to ensure proper alignment. Correct as needed 3. Check wheel for debris build up. Clean as needed 4. Replace belt 5. Lubrication bearings
Insufficient Airflow	<ol style="list-style-type: none"> 1. Blower 2. Duct System 	<ol style="list-style-type: none"> 1. Check for correct wheel rotation 2. Check for obstructions. Clean filters/coils

MAINTENANCE

⚠ WARNING *Ensure power supply is disconnected and locked out prior to performing maintenance.*

1. Inspect and tighten the wheel set screw after the first 50 to 100 hours of operation and periodically thereafter.
2. Follow the motor manufacturer's instructions for motor lubrication. Remove any excess lubrication.
3. Drives:
 - A - Check belt tension and alignment, replace cracked or worn belts. If it is necessary to replace one belt on a multiple belt drive, replace all the belts with a matched set.
 - B - Under normal conditions, no re-lubrication is the rule. The bearing lubricant cavity is 1/3-1/2 filled as Shipped from the factory. Never lubricate new bearings.
 - C - Tighten set-screws on sheaves, wheel and bearing locking collars.
4. Clean the blower wheel periodically. Material build up on the blades can cause wheel imbalance which may result in wheel or motor bearing failure.
5. Generally, bearings should be lubricated at six to twelve month intervals. Recommended lubricants are: a) Imperial Oil - ESSO Beacon 325, or b) Shell Oil - Alvania Grease #3. A small amount of grease should be added slowly when the shaft is rotating.

NOTE: Over greasing may cause damage to the bearing. Avoid rupturing the bearing seal.

6. Should further service to the blower be necessary, refer to the exploded view illustration (see Figure 4).

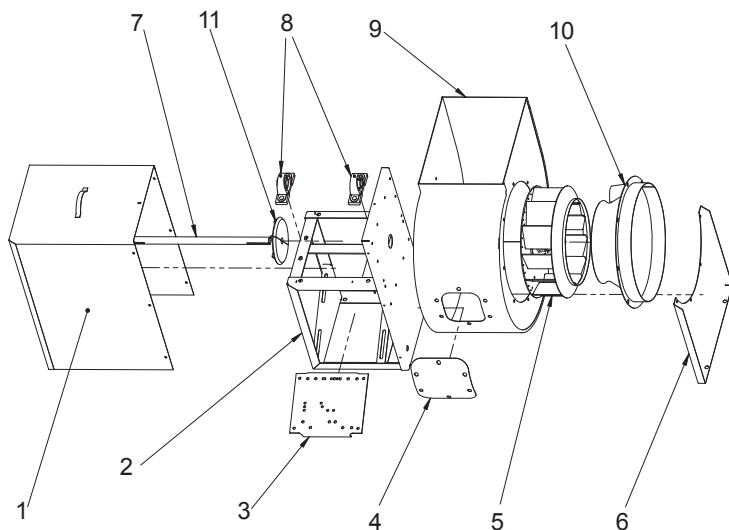


Figure 4

REPAIR PARTS LIST FOR 806XW2

Ref. No.	Description	Part Number:	Qty.
1	Cover assembly	N/A	
2	Motor compartment welded assembly	N/A	
3	Motor plate	N/A	
4	Clean out door	R-B-3250043-GREY	1
5	Wheel	R-6032051	1
6	Support leg	N/A	
7	Shaft	R-2100188	1
8	Bearings	R-B-8100030	2
9	Housing assembly	N/A	
10	Inlet	R-B-6210060-GREY	1
11	Heat Slinger	R-B-2250437	1

REPAIR PARTS LIST FOR 806XW3

Ref. No.	Description	Part Number:	Qty.
1	Cover assembly	N/A	
2	Motor compartment welded assembly	N/A	
3	Motor plate	N/A	
4	Clean out door	R-B-3250043-GREY	1
5	Wheel	R-6032037	1
6	Support leg	N/A	
7	Shaft	R-2100037	1
8	Bearings	R-B-8100003	2
9	Housing assembly	N/A	
10	Inlet	R-B-6210084-GREY	1
11	Heat Slinger	R-B-2250348	1

REPAIR PARTS LIST FOR 806XW4

Ref. No.	Description	Part Number:	Qty.
1	Cover assembly	N/A	
2	Motor compartment welded assembly	N/A	
3	Motor plate	N/A	
4	Clean out door	R-B-3250044-GREY	1
5	Wheel	R-6032018	1
6	Support leg	N/A	
7	Shaft	R-2100037	1
8	Bearings	R-B-8100003	2
9	Housing assembly	N/A	
10	Inlet	R-B-6210015-GREY	1
11	Heat Slinger	R-B-2250348	1

REPAIR PARTS LIST FOR 806XW5

Ref. No.	Description	Part Number:	Qty.
1	Cover assembly	N/A	
2	Motor compartment welded assembly	N/A	
3	Motor plate	N/A	
4	Clean out door	R-B-3250044-GREY	1
5	Wheel	R-6032041	1
6	Support leg	N/A	
7	Shaft	R-2100037	1
8	Bearings	R-B-8100003	2
9	Housing assembly	N/A	
10	Inlet	R-B-6210085-GREY	1
11	Heat Slinger	R-B-2250348	1

REPAIR PARTS LIST FOR 806XW6

Ref. No.	Description	Part Number:	Qty.
1	Cover assembly	N/A	
2	Motor compartment welded assembly	N/A	
3	Motor plate	N/A	
4	Clean out door	R-B-3250044-GREY	1
5	Wheel	R-6032019	1
6	Support leg	N/A	
7	Shaft	R-2100036	1
8	Bearings	R-B-8100004	2
9	Housing assembly	N/A	
10	Inlet	R-B-6210016-GREY	1
11	Heat Slinger	R-B-2250349	1

REPAIR PARTS LIST FOR 806XW7

Ref. No.	Description	Part Number:	Qty.
1	Cover assembly	N/A	
2	Motor compartment welded assembly	N/A	
3	Motor plate	N/A	
4	Clean out door	R-B-3250044-GREY	1
5	Wheel	R-6032034	1
6	Support leg	N/A	
7	Shaft	R-2100036	1
8	Bearings	R-B-8100004	2
9	Housing assembly	N/A	
10	Inlet	R-B-6210017-GREY	1
11	Heat Slinger	R-B-2250349	1

REPAIR PARTS LIST FOR 806XW8

Ref. No.	Description	Part Number:	Qty.
1	Cover assembly	N/A	
2	Motor compartment welded assembly	N/A	
3	Motor plate	N/A	
4	Clean out door	R-B-3250045-GREY	1
5	Wheel	R-6032047	1
6	Support leg	N/A	
7	Shaft	R-2100060	1
8	Bearings	R-B-8100004	2
9	Housing assembly	N/A	
10	Inlet	R-B-6210018-GREY	1
11	Heat Slinger	R-B-2250349	1

REPAIR PARTS LIST FOR 806XW9

Ref. No.	Description	Part Number:	Qty.
1	Cover assembly	N/A	
2	Motor compartment welded assembly	N/A	
3	Motor plate	N/A	
4	Clean out door	R-B-3250045-GREY	1
5	Wheel	R-6032035	1
6	Support leg	N/A	
7	Shaft	R-2100060	1
8	Bearings	R-B-8100004	2
9	Housing assembly	N/A	
10	Inlet	R-B-6210019-GREY	1
11	Heat Slinger	R-B-2250349	1

REPAIR PARTS LIST FOR 806XX0

Ref. No.	Description	Part Number:	Qty.
1	Cover assembly	N/A	
2	Motor compartment welded assembly	N/A	
3	Motor plate	N/A	
4	Clean out door	R-B-3250045-GREY	1
5	Wheel	R-6032049	1
6	Support leg	N/A	
7	Shaft	R-2100059	1
8	Bearings	R-B-8100005	2
9	Housing assembly	N/A	
10	Inlet	R-B-6210020-GREY	1
11	Heat Slinger	R-B-2250350	1

***For Repair Parts, call 1-800-Grainger
24 hours a day – 365 days a year***

Please provide following information:

- Model number
- Serial number (if any)
- Part description and number as shown in parts list

DAYTON ONE-YEAR LIMITED WARRANTY

DAYTON ONE-YEAR LIMITED WARRANTY. All Dayton® product models covered in this manual are warranted by Dayton Electric Mfg. Co. ("Dayton") to the original user against defects in workmanship or materials under normal use for one year after date of purchase. If the Dayton product is part of a set, only the portion that is defective is subject to this warranty. Any product or part which is determined to be defective in material or workmanship and returned to an authorized service location, as Dayton or Dayton's designee designates, shipping costs prepaid, will be, as the exclusive remedy, repaired or replaced with a new or reconditioned product or part of equal utility or a full refund given, at Dayton's or Dayton's designee's option, at no charge. For limited warranty claim procedures, see "Warranty Service" below. This warranty is void if there is evidence of misuse, mis-repair, mis-installation, abuse or alteration. This warranty does not cover normal wear and tear of Dayton products or portions of them, or products or portions of them which are consumable in normal use. This limited warranty gives purchasers specific legal rights, and you may also have other rights which vary from jurisdiction to jurisdiction.

WARRANTY DISCLAIMERS AND LIMITATIONS OF LIABILITY RELATING TO ALL CUSTOMERS FOR ALL PRODUCTS

LIMITATION OF LIABILITY. TO THE EXTENT ALLOWABLE UNDER APPLICABLE LAW, DAYTON'S LIABILITY FOR CONSEQUENTIAL AND INCIDENTAL DAMAGES IS EXPRESSLY DISCLAIMED. DAYTON'S LIABILITY IN ALL EVENTS IS LIMITED TO AND SHALL NOT EXCEED THE PURCHASE PRICE PAID.

WARRANTY DISCLAIMER. A DILIGENT EFFORT HAS BEEN MADE TO PROVIDE PRODUCT INFORMATION AND ILLUSTRATE THE PRODUCTS IN THIS LITERATURE ACCURATELY; HOWEVER, SUCH INFORMATION AND ILLUSTRATIONS ARE FOR THE SOLE PURPOSE OF IDENTIFICATION, AND DO NOT EXPRESS OR IMPLY A WARRANTY THAT THE PRODUCTS ARE MERCHANTABLE, OR FIT FOR A PARTICULAR PURPOSE, OR THAT THE PRODUCTS WILL NECESSARILY CONFORM TO THE ILLUSTRATIONS OR DESCRIPTIONS. EXCEPT AS PROVIDED BELOW, NO WARRANTY OR AFFIRMATION OF FACT, EXPRESSED OR IMPLIED, OTHER THAN AS STATED IN THE "LIMITED WARRANTY" ABOVE IS MADE OR AUTHORIZED BY DAYTON.

PRODUCT SUITABILITY. MANY JURISDICTIONS HAVE CODES AND REGULATIONS GOVERNING SALES, CONSTRUCTION, INSTALLATION, AND/OR USE OF PRODUCTS FOR CERTAIN PURPOSES, WHICH MAY VARY FROM THOSE IN NEIGHBORING AREAS. WHILE ATTEMPTS ARE MADE TO ASSURE THAT DAYTON PRODUCTS COMPLY WITH SUCH CODES, DAYTON CANNOT GUARANTEE COMPLIANCE, AND CANNOT BE RESPONSIBLE FOR HOW THE PRODUCT IS INSTALLED OR USED. BEFORE PURCHASE AND USE OF A PRODUCT, REVIEW THE SAFETY/SPECIFICATIONS, AND ALL APPLICABLE NATIONAL AND LOCAL CODES AND REGULATIONS, AND BE SURE THAT THE PRODUCT, INSTALLATION, AND USE WILL COMPLY WITH THEM.

CONSUMERS ONLY. CERTAIN ASPECTS OF DISCLAIMERS ARE NOT APPLICABLE TO CONSUMER PRODUCTS SOLD TO CONSUMERS; (A) SOME JURISDICTIONS DO NOT ALLOW THE EXCLUSION OR LIMITATION OF INCIDENTAL OR CONSEQUENTIAL DAMAGES, SO THE ABOVE LIMITATION OR EXCLUSION MAY NOT APPLY TO YOU; (B) ALSO, SOME JURISDICTIONS DO NOT ALLOW A LIMITATION ON HOW LONG AN IMPLIED WARRANTY LASTS, SO THE ABOVE LIMITATION MAY NOT APPLY TO YOU; AND (C) BY LAW, DURING THE PERIOD OF THIS LIMITED WARRANTY, ANY IMPLIED WARRANTIES OF MERCHANTABILITY OR FITNESS FOR A PARTICULAR PURPOSE APPLICABLE TO CONSUMER PRODUCTS PURCHASED BY CONSUMERS, MAY NOT BE EXCLUDED OR OTHERWISE DISCLAIMED.

THIS LIMITED WARRANTY ONLY APPLIES TO UNITED STATES PURCHASERS FOR DELIVERY IN THE UNITED STATES.

WARRANTY SERVICE

To obtain warranty service if you purchased the covered product directly from W.W. Grainger, Inc. ("Grainger"), (i) write or call or visit the local Grainger branch from which the product was purchased or another Grainger branch near you (see www.grainger.com for a listing of Grainger branches); or (ii) contact Grainger by going to www.grainger.com and clicking on the "Contact Us" link at the top of the page, then clicking on the "Email us" link; or (iii) call Customer Care (toll free) at 1-888-361-8649. To obtain warranty service if you purchased the covered product from another distributor or retailer, (i) go to www.grainger.com for Warranty Service; (ii) write or call or visit a Grainger branch near you; or (iii) call Customer Care (toll free) at 1-888-361-8649. In any case, you will need to provide, to the extent available, the purchase date, the original invoice number, the stock number, a description of the defect, and anything else specified in this Dayton One-Year Limited Warranty. You may be required to send the product in for inspection at your cost. You can follow up on the progress of inspections and corrections in the same ways. Title and risk of loss pass to buyer on delivery to common carrier, so if product was damaged in transit to you, file claim with carrier, not retailer, Grainger or Dayton. For warranty information for purchasers and/or delivery outside the United States, please use the following applicable contact information:

**Dayton Electric Mfg. Co.,
100 Grainger Parkway, Lake Forest, IL 60045 U.S.A.
or call +1-888-361-8649**