



Double Inlet Centrifugal Fan Backward Curve

*Quick,
Convenient And Clean*



DFH

Double Inlet Centrifugal Fan - DFH

- Double inlet fans with backward curve impellers
- Sizes from 250mm up to 1000mm wheel diameter
- Construction of K/G



DLK Ventilatoren Sdn Bhd certifies that the DFH fan shown herein is licensed to bear the AMCA Seal.

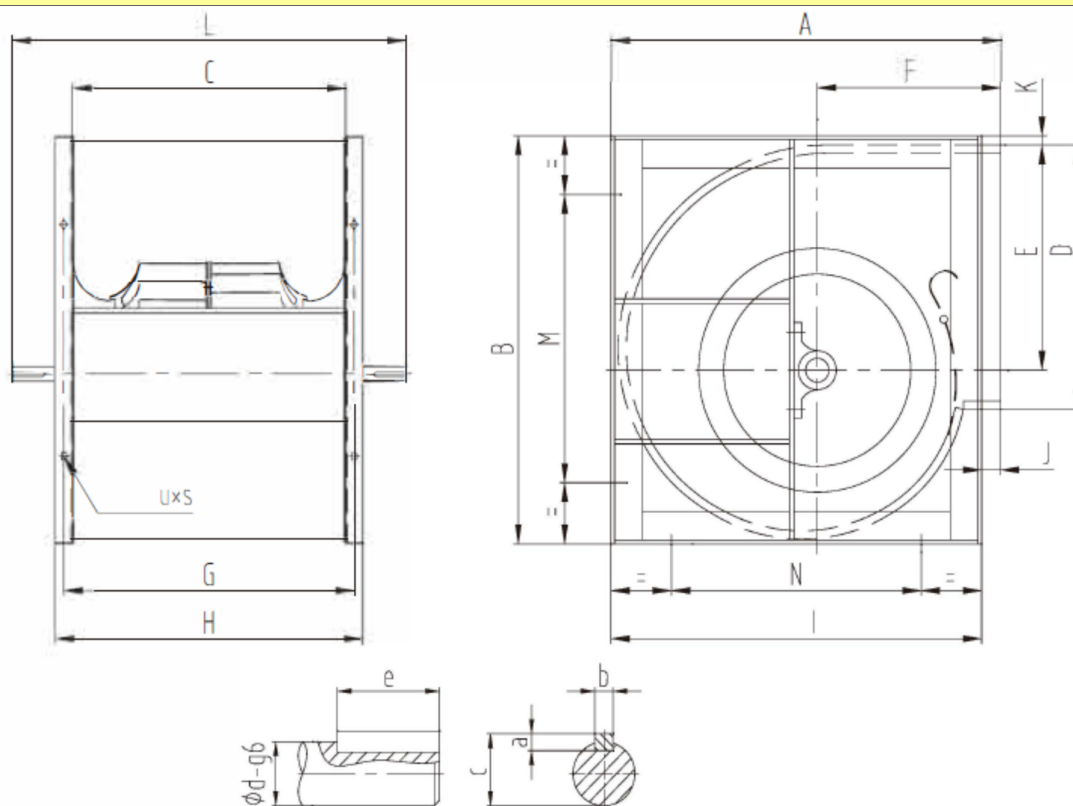
The ratings shown are based on tests and procedures performed in accordance with AMCA publication 211 and AMCA publication 311 and comply with the requirements of the AMCA Certified Ratings Program.



Operating Limits														
		250	280	315	355	400	450	500	560	630	710	800	900	1000
Max installed Power (kw)	K	3	4	5.5	7.5	7.5	11	11	18.5	22	30	30	45	45
	G	5.5	7.5	7.5	11	15	18.5	22	30	37	55	55	75	75
Max speed (rpm)	K	3800	3400	3300	2800	2400	2200	1900	1800	1500	1400	1100	1100	1000
	G	4500	4200	3800	3400	3100	2800	2400	2200	1900	1700	1500	1400	1200
Fan weight (kg)	K	16	22	30	40	55	74	89	162	196	260	325	410	530
	G	16.5	22.5	31	42	57	76	92	168	204	268	334	420	540
Temperature (min-20°C)	K	85	85	85	85	85	85	85	85	85	85	85	85	85
	G	85	85	85	85	85	85	85	85	85	85	85	85	85
Bearing Dynamic load (N)	K	12800	14000	14000	19500	19500	25700	29100	32500	32500	43500	43500	57500	57500
	G	14000	19500	19500	25700	25700	29100	32500	43500	43500	57500	57500	66000	66000
Bearing number	K	UCP204	UCP205	UCP205	UCP206	UCP206	UCP207	UKP208	UKP209	UKP209	UKP211	UKP211	UKP213	UKP213
	G	UCP205	UCP206	UCP206	UCP207	UCP207	UCP208	UKP209	UKP211	UKP211	UKP213	UKP213	UKP215	UKP215



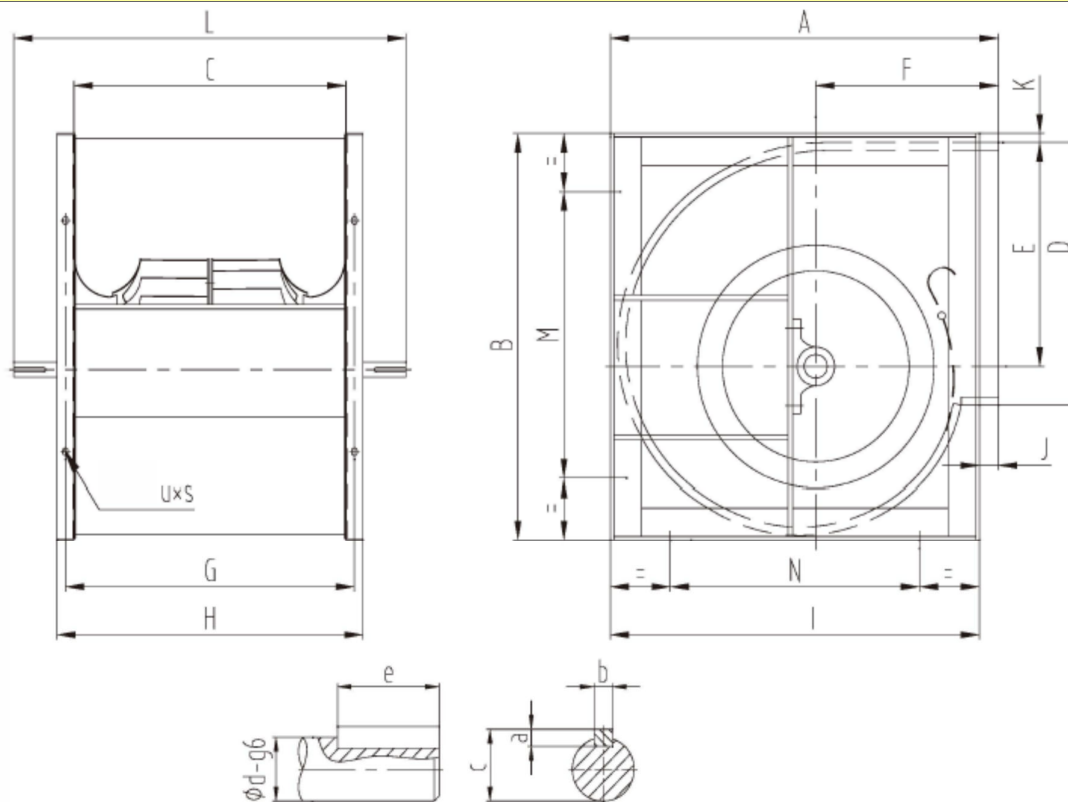
DIMENSIONS DFH-K



Model	A	B	C	D	E	F	G	H	I	J	K	L	M	N	a	b	c	d	e	U*S
DFH 250K	427.5	475	322	322	264	193	350	372	391.5	36	10.5	520	224	224	6	6	22.5	20	45	11*16
DFH 280K	476.5	530	361	361	296	213	391	421	440.5	36	11.5	580	280	280	7	8	28	25	50	11*16
DFH 315K	530	595	404	404	336	234	434	464	492	38	11.5	625	280	280	7	8	28	25	50	11*16
DFH 355K	587.5	663	453	453	376	260	489	513	550.5	37	12	680	355	355	7	8	33	30	65	11*16
DFH 400K	656	742	507	507	421.5	292	547	587	620	36	12	760	355	355	7	8	33	30	65	11*16
DFH 450K	739	841	569	569	482	325	609	649	699	40	12	845	530	530	8	10	38	35	75	11*16
DFH 500K	810	929	638	638	530	352	678	718	762	48	12	920	530	530	8	10	38	35	75	13*18
DFH 560K	890	1022	715	715	599	390	765	805	841	49	5	1060	530	530	8	12	43	40	75	13*18
DFH 630K	998	1156	801	801	670	438	851	901	946	52	8	1160	530	530	8	12	43	40	90	13*18
DFH 710K	1122	1298	898	898	761.5	482	948	998	1062	60	6.5	1300	630	630	9	14	53.8	50	110	17*22
DFH 800K	1254	1466	1007	1007	855.5	538	1057	1107	1188	66	6.5	1450	710	710	9	14	53.8	50	110	17*22
DFH 900K	1406	1641	1130	1130	962.5	600	1180	1230	1328	78	6.5	1580	800	800	11	18	64.4	60	110	17*22
DFH 1000K	1538	1798	1267	1267	1052	655	1317	1367	1454	84	8	1700	900	900	11	18	64.4	60	110	17*22

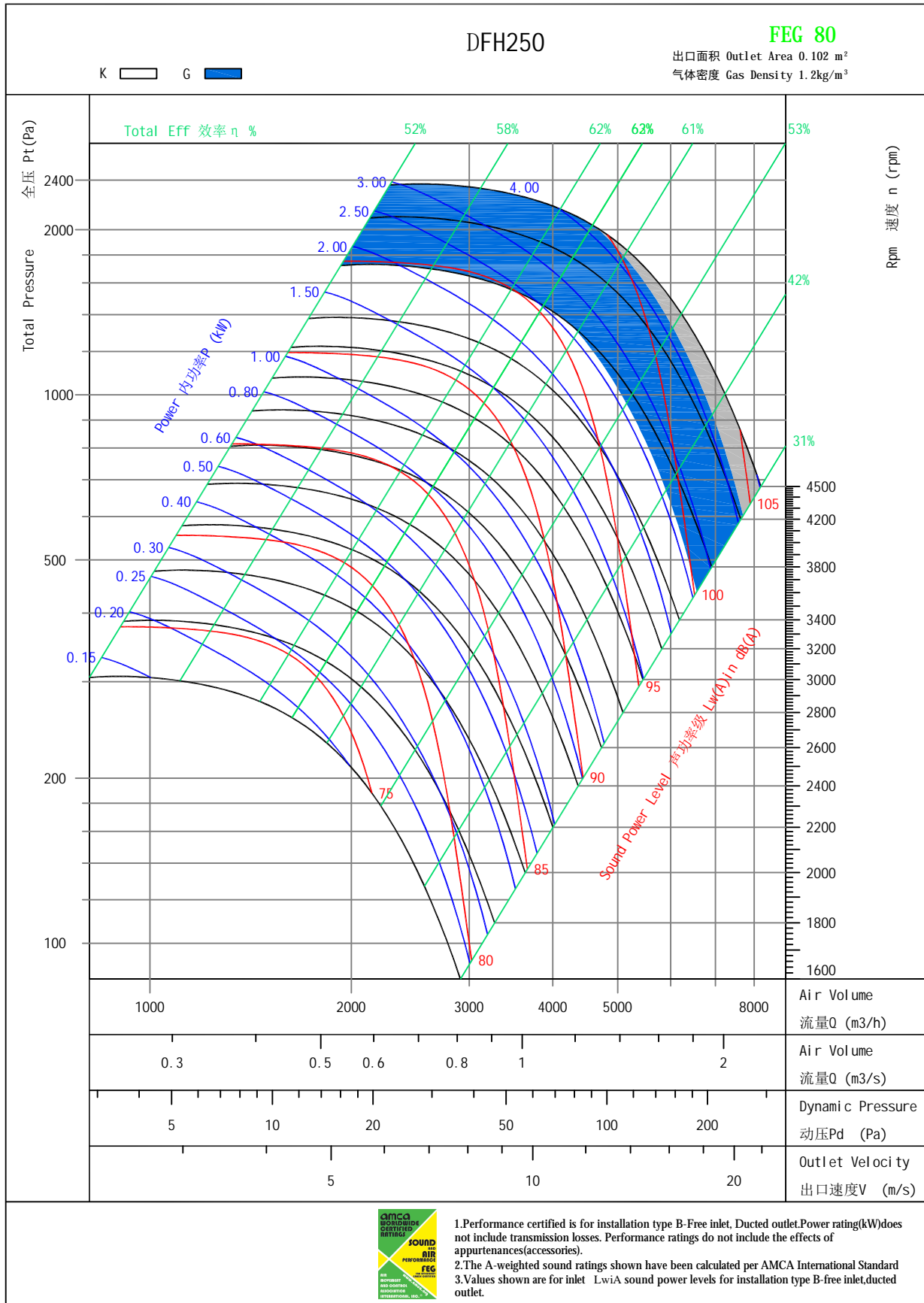
All dimensions in mm

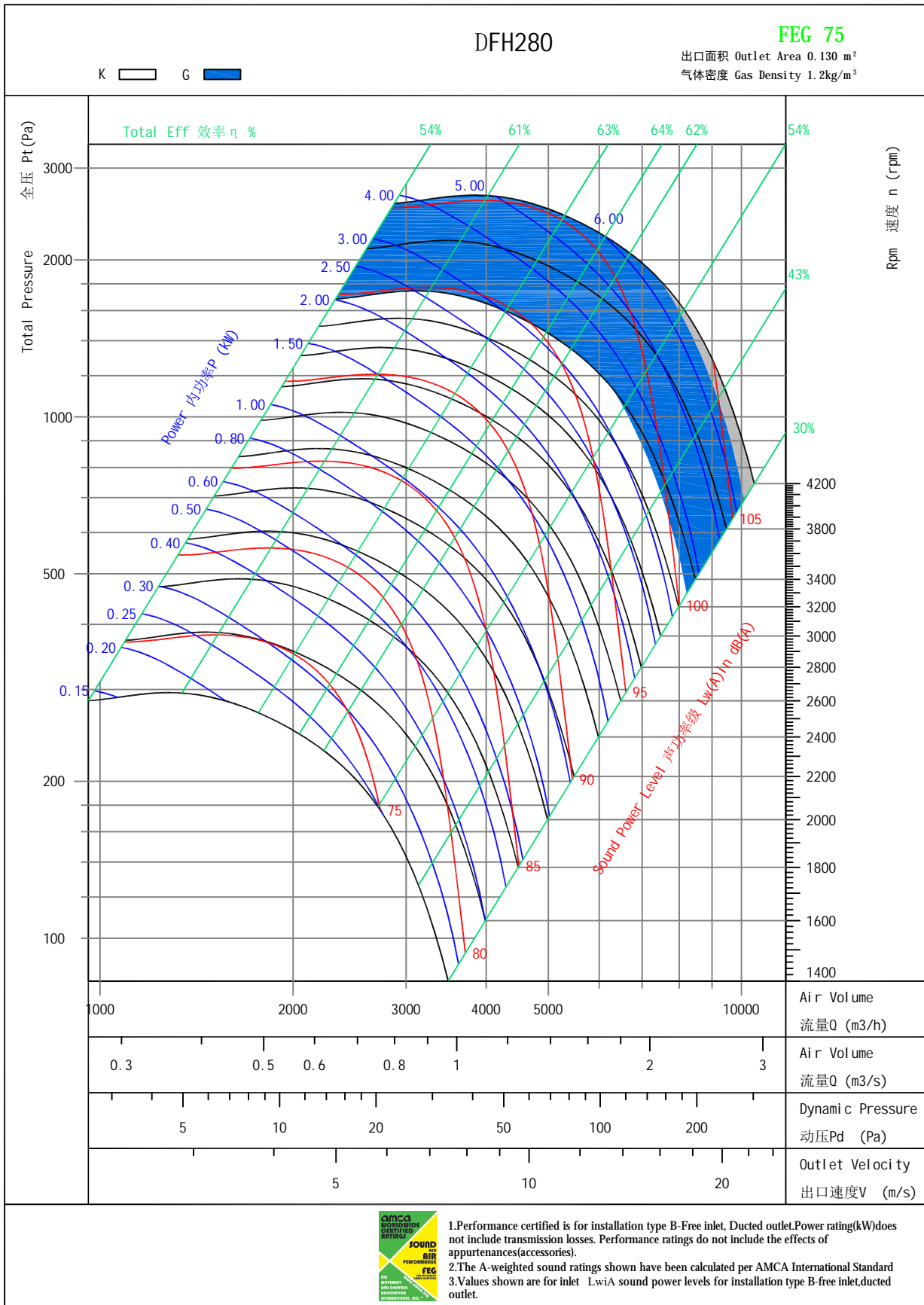
DIMENSIONS DFH-G

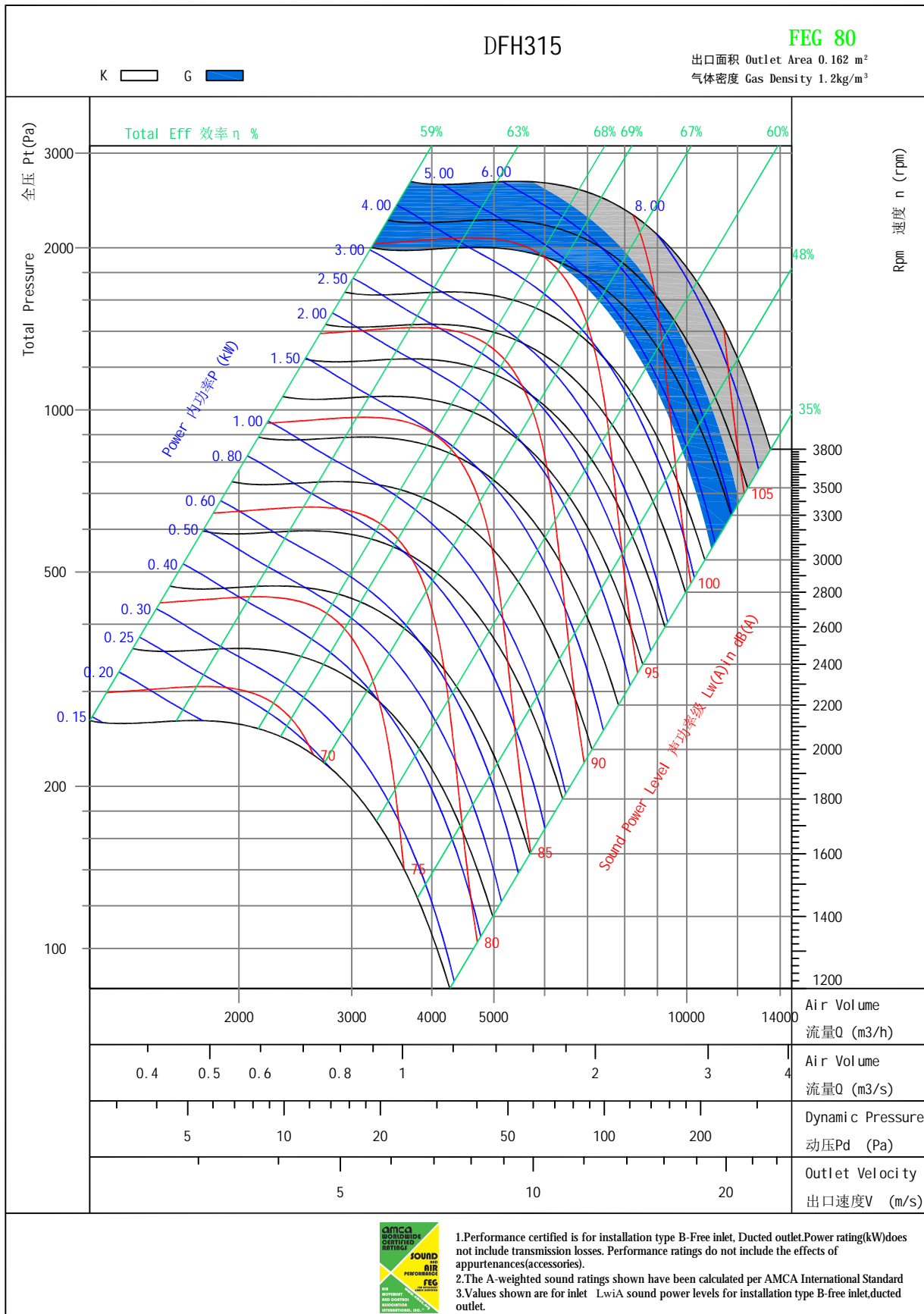


Model	A	B	C	D	E	F	G	H	I	J	K	L	M	N	a	b	c	d	e	U*S
DFH 250G	427.5	475	322	322	264	193	350	372	391.5	36	10.5	520	224	224	7	8	28	25	45	11*16
DFH 280G	476.5	530	361	361	296	213	391	421	440.5	36	11.5	580	280	280	7	8	33	30	50	11*16
DFH 315G	530	595	404	404	336	234	434	464	492	38	11.5	625	280	280	7	8	33	30	50	11*16
DFH 355G	587.5	663	453	453	376	260	489	513	550.5	37	12	680	355	355	8	10	38	35	65	11*16
DFH 400G	656	742	507	507	421.5	292	547	587	620	36	12	760	355	355	8	10	38	35	65	11*16
DFH 450G	739	841	569	569	482	325	609	649	699	40	12	845	530	530	8	12	43	40	75	11*16
DFH 500G	810	929	638	638	530	352	678	718	762	48	12	920	530	530	8	12	43	40	75	13*18
DFH 560G	890	1022	715	715	599	390	765	805	841	49	5	1060	530	530	9	14	53.8	50	90	13*18
DFH 630G	998	1156	801	801	670	438	851	901	946	52	8	1160	530	530	9	14	53.8	50	90	13*18
DFH 710G	1122	1298	898	898	761.5	482	948	998	1062	60	6.5	1300	630	630	11	18	64.4	60	110	17*22
DFH 800G	1254	1466	1007	1007	855.5	538	1057	1107	1188	66	6.5	1450	710	710	11	18	64.4	60	110	17*22
DFH 900G	1406	1641	1130	1130	962.5	600	1180	1230	1328	78	6.5	1580	800	800	12	20	69.5	65	110	17*22
DFH 1000G	1538	1798	1267	1267	1052	655	1317	1367	1454	84	8	1700	900	900	12	20	69.5	65	110	17*22

All dimensions in mm







1. Performance certified is for installation type B-Free inlet, Ducted outlet. Power rating (kW) does not include transmission losses. Performance ratings do not include the effects of appurtenances (accessories).

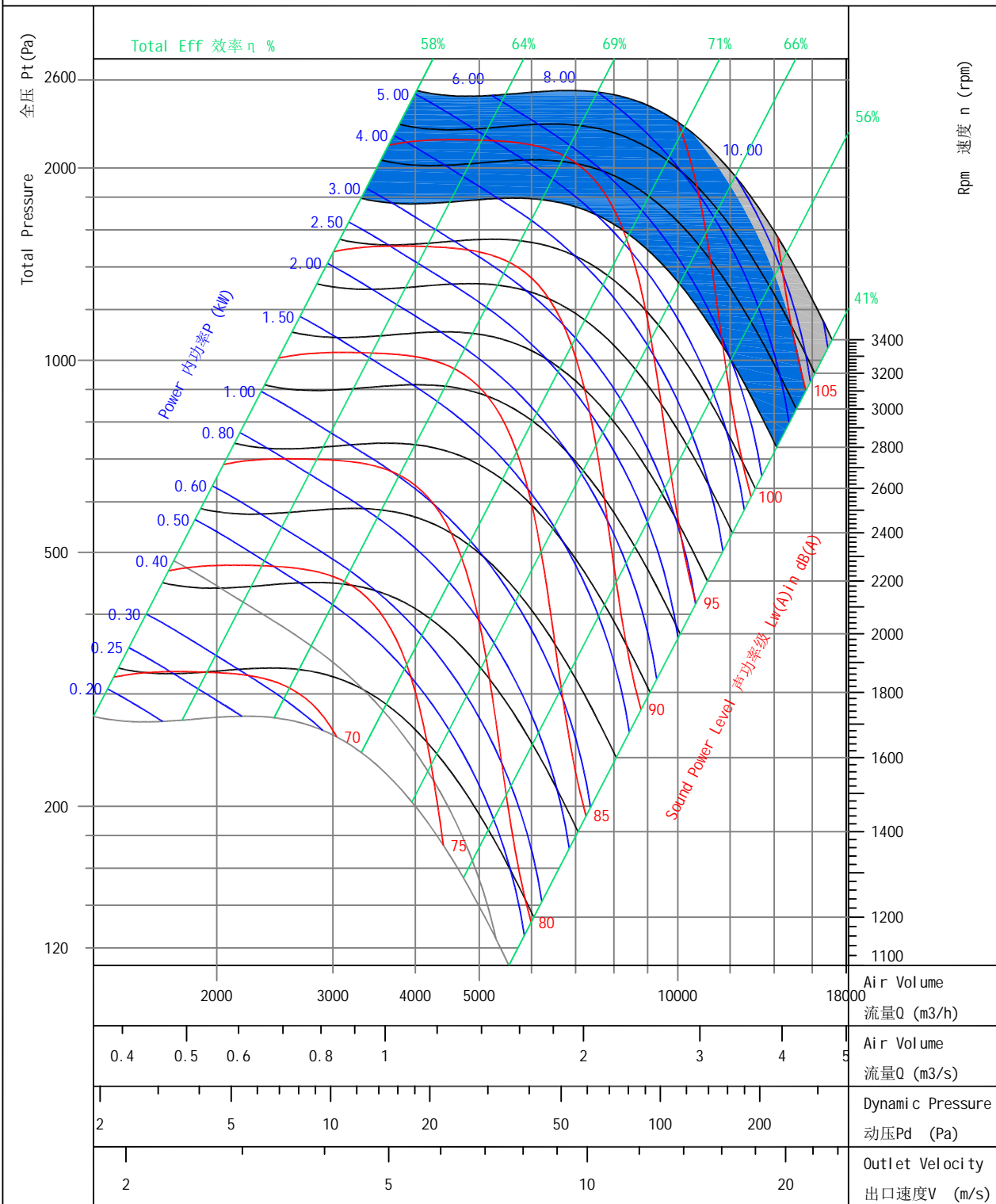
2. The A-weighted sound ratings shown have been calculated per AMCA International Standard 3. Values shown are for inlet L_{wi}A sound power levels for installation type B-free inlet, ducted outlet.

DFH355

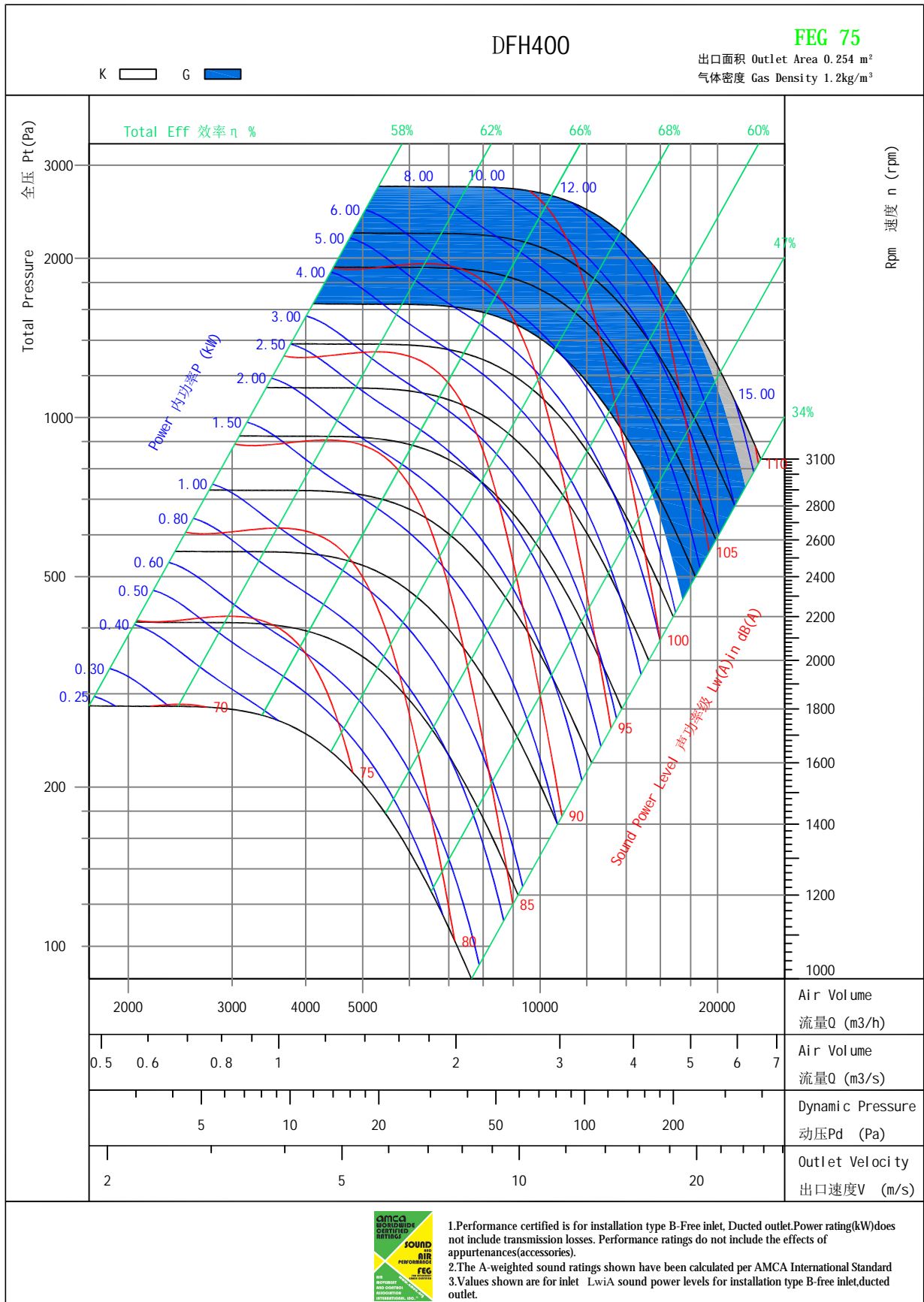
FEG 80

出口面积 Outlet Area 0.203 m²
 气体密度 Gas Density 1.2kg/m³

K G



1. Performance certified is for installation type B-Free inlet, Ducted outlet. Power rating (kW) does not include transmission losses. Performance ratings do not include the effects of appurtenances (accessories).
 2. The A-weighted sound ratings shown have been calculated per AMCA International Standard 3. Values shown are for inlet L_wiA sound power levels for installation type B-free inlet, ducted outlet.

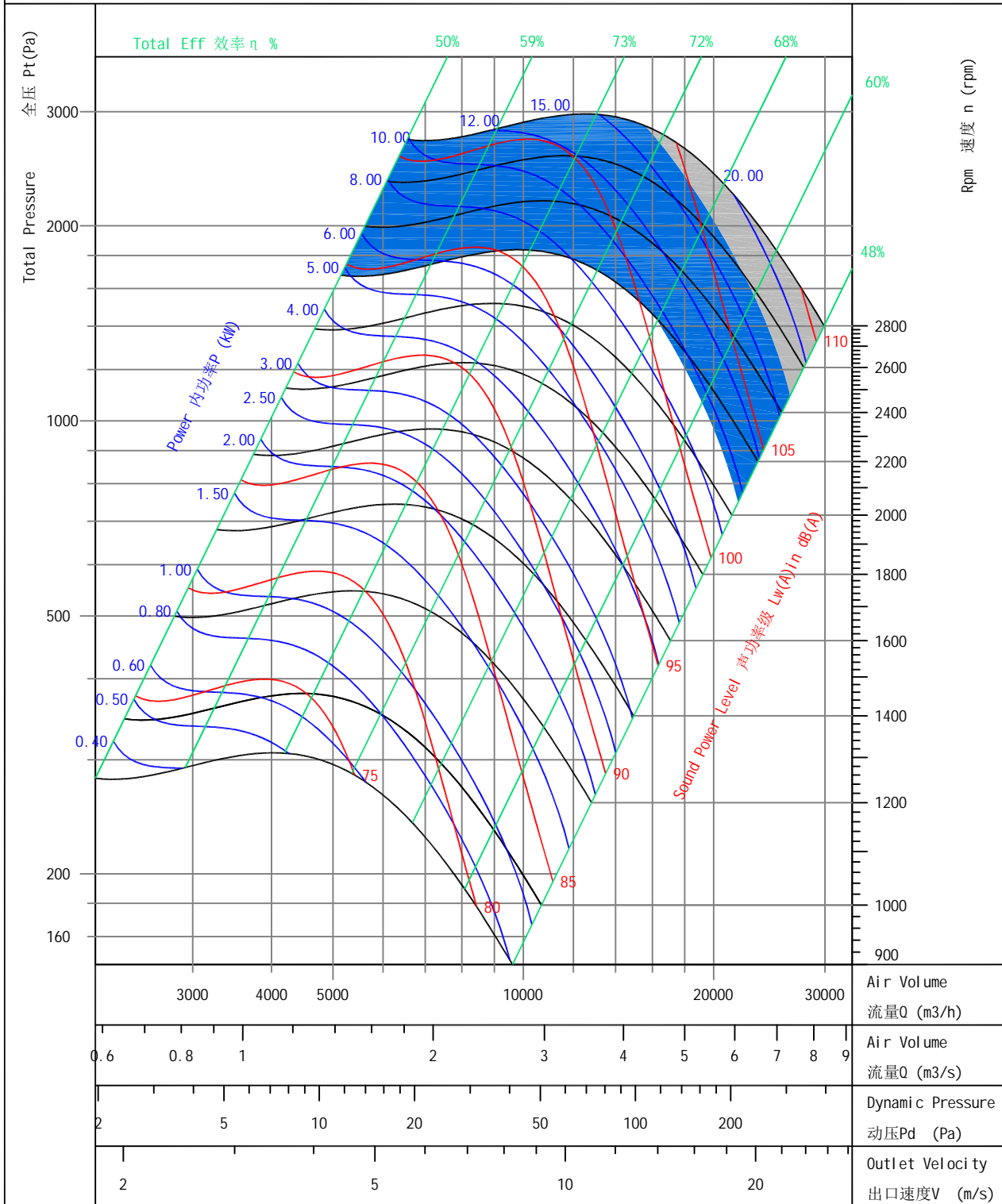


DFH450

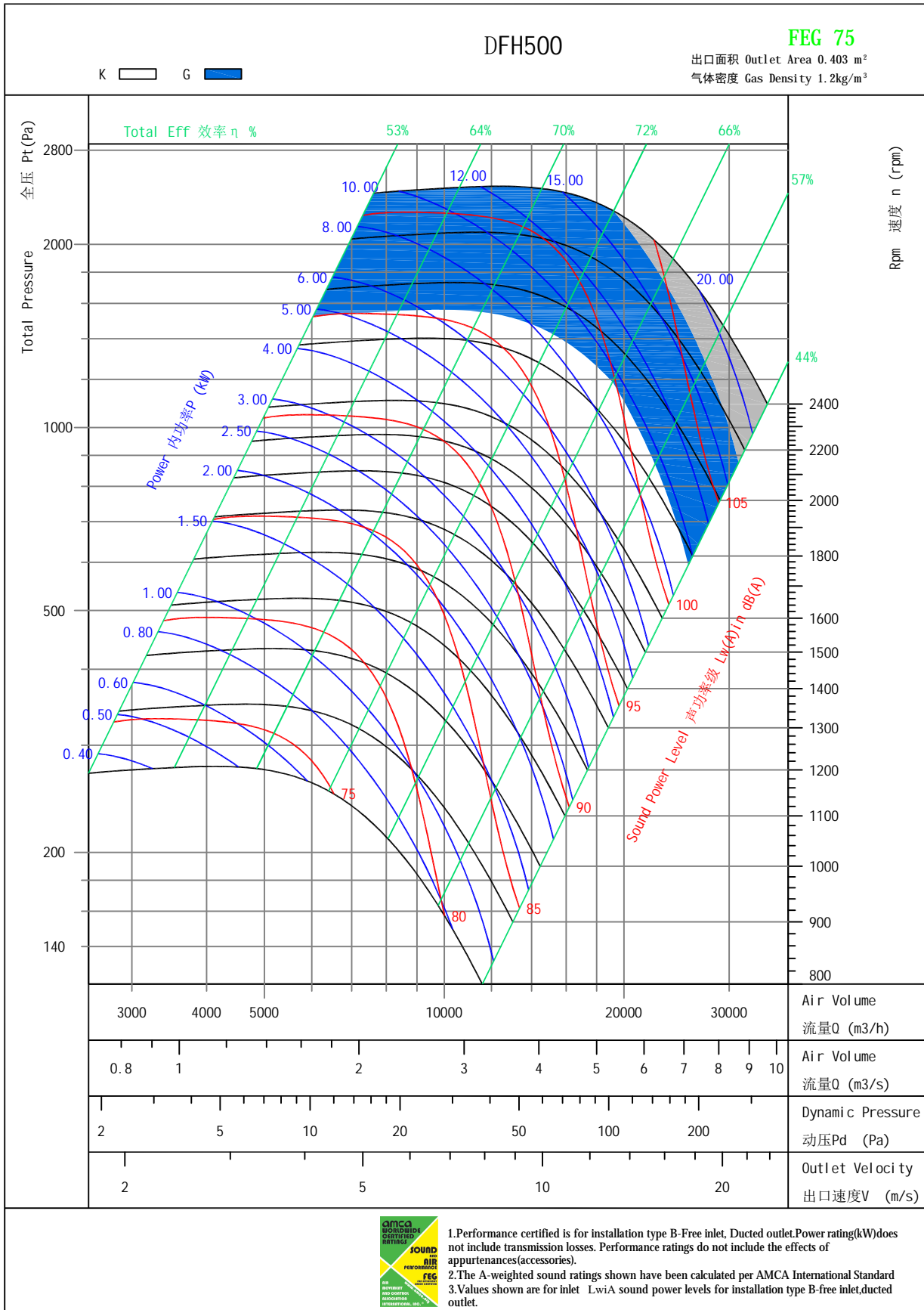
FEG 80

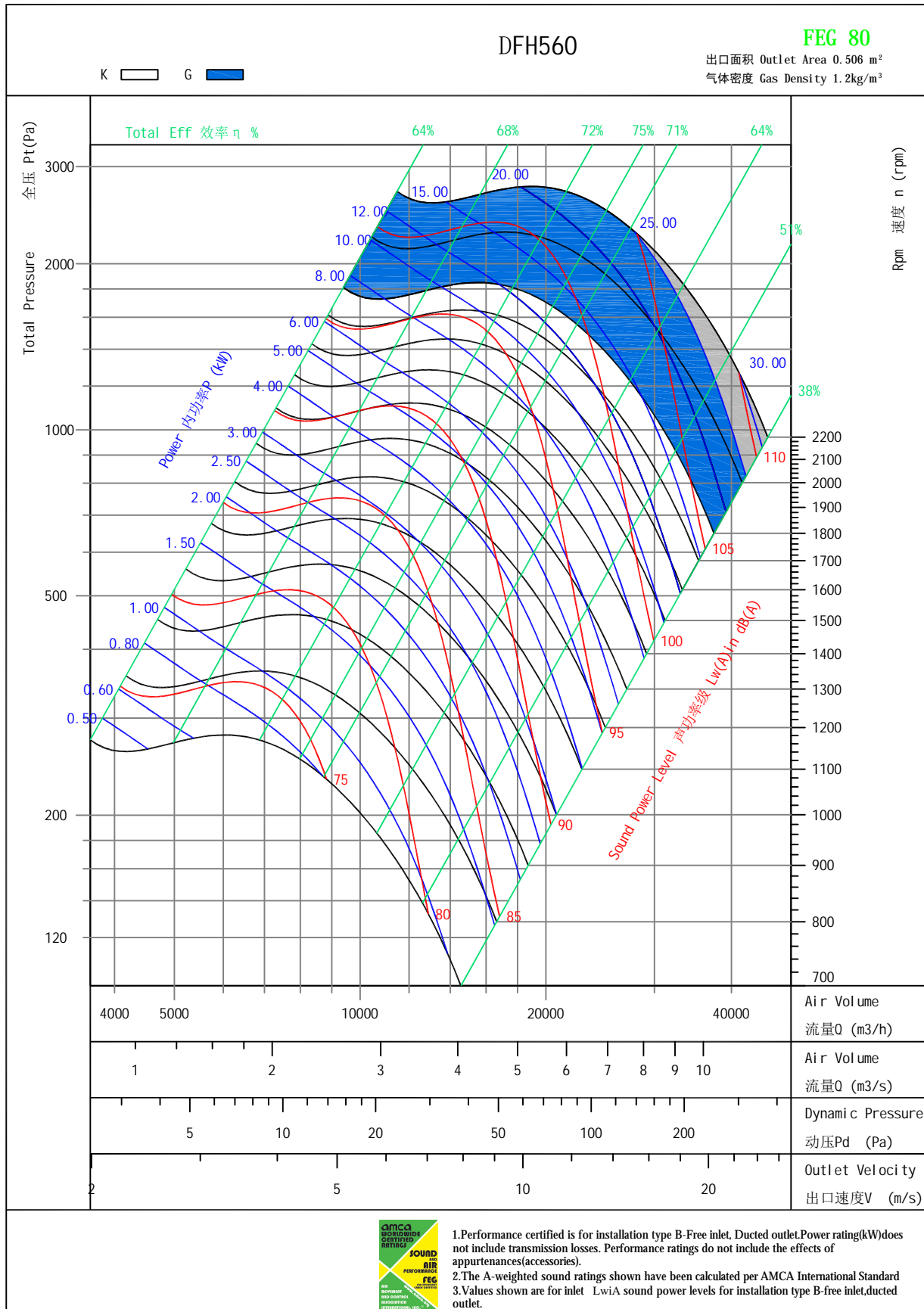
出口面积 Outlet Area 0.321 m²
 气体密度 Gas Density 1.2kg/m³

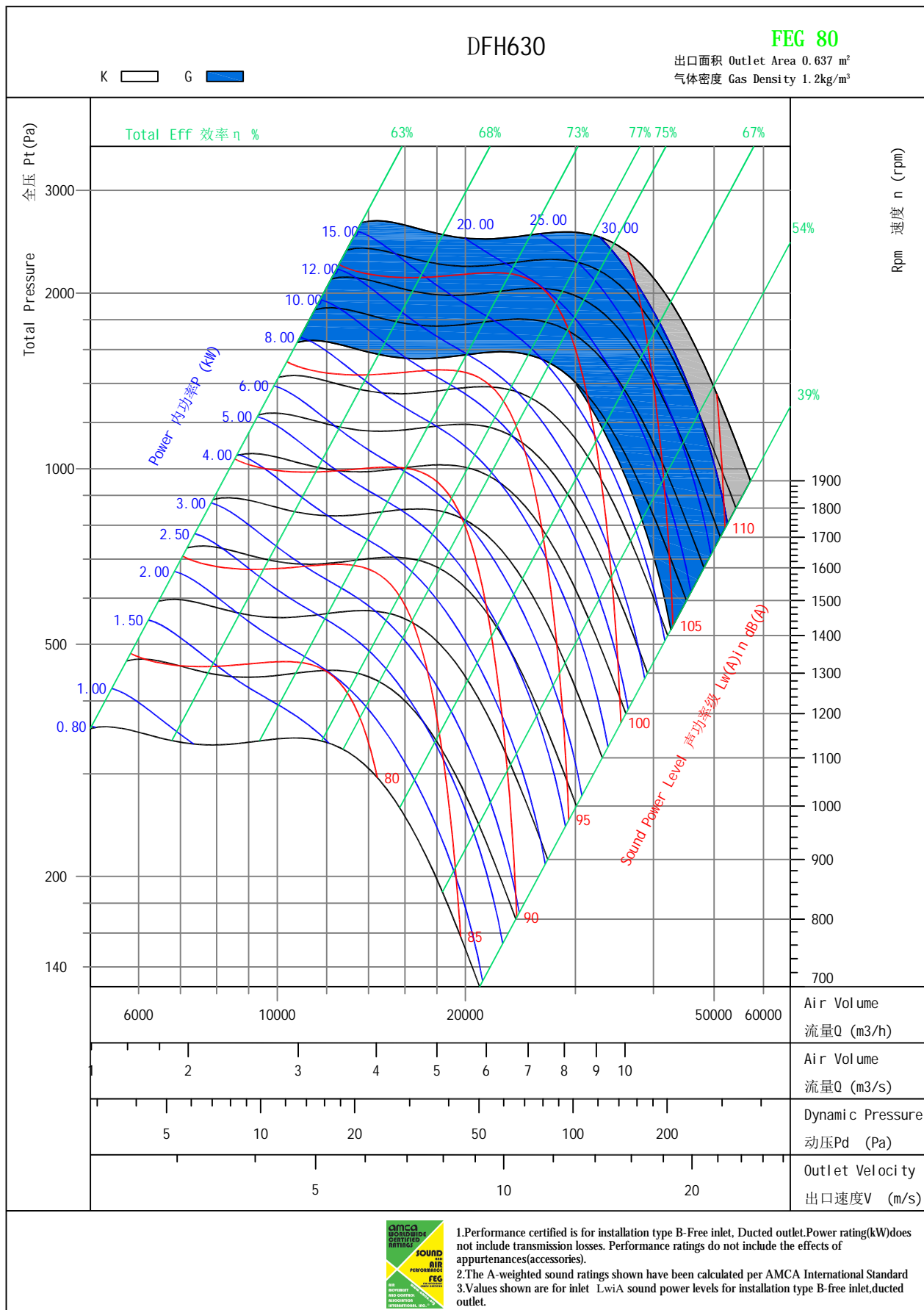
K G

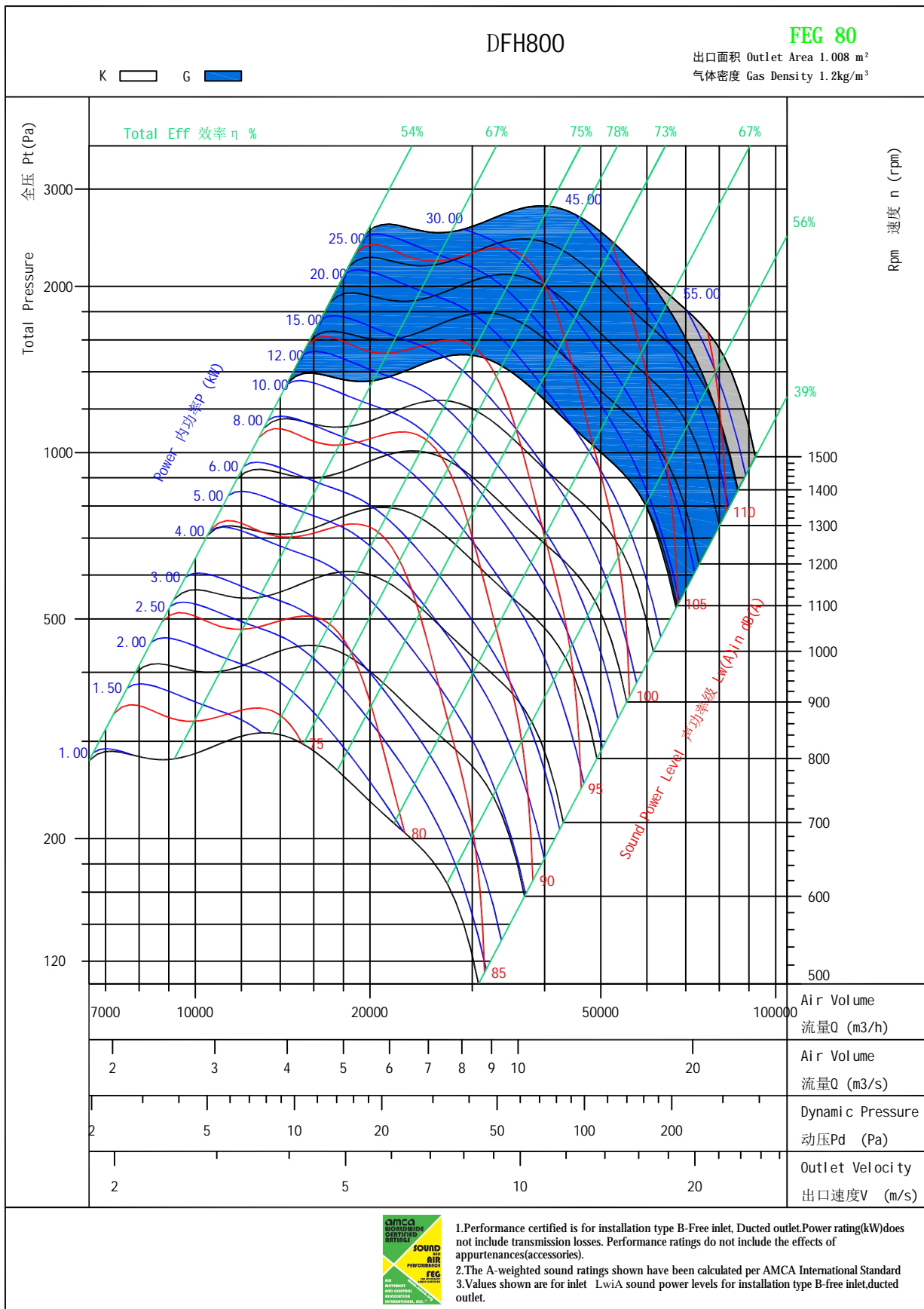


1. Performance certified is for installation type B-Free inlet, Ducted outlet. Power rating(kW) does not include transmission losses. Performance ratings do not include the effects of appurtenances(accessories).
 2. The A-weighted sound ratings shown have been calculated per AMCA International Standard
 3. Values shown are for inlet L_wA sound power levels for installation type B-free inlet, ducted outlet.







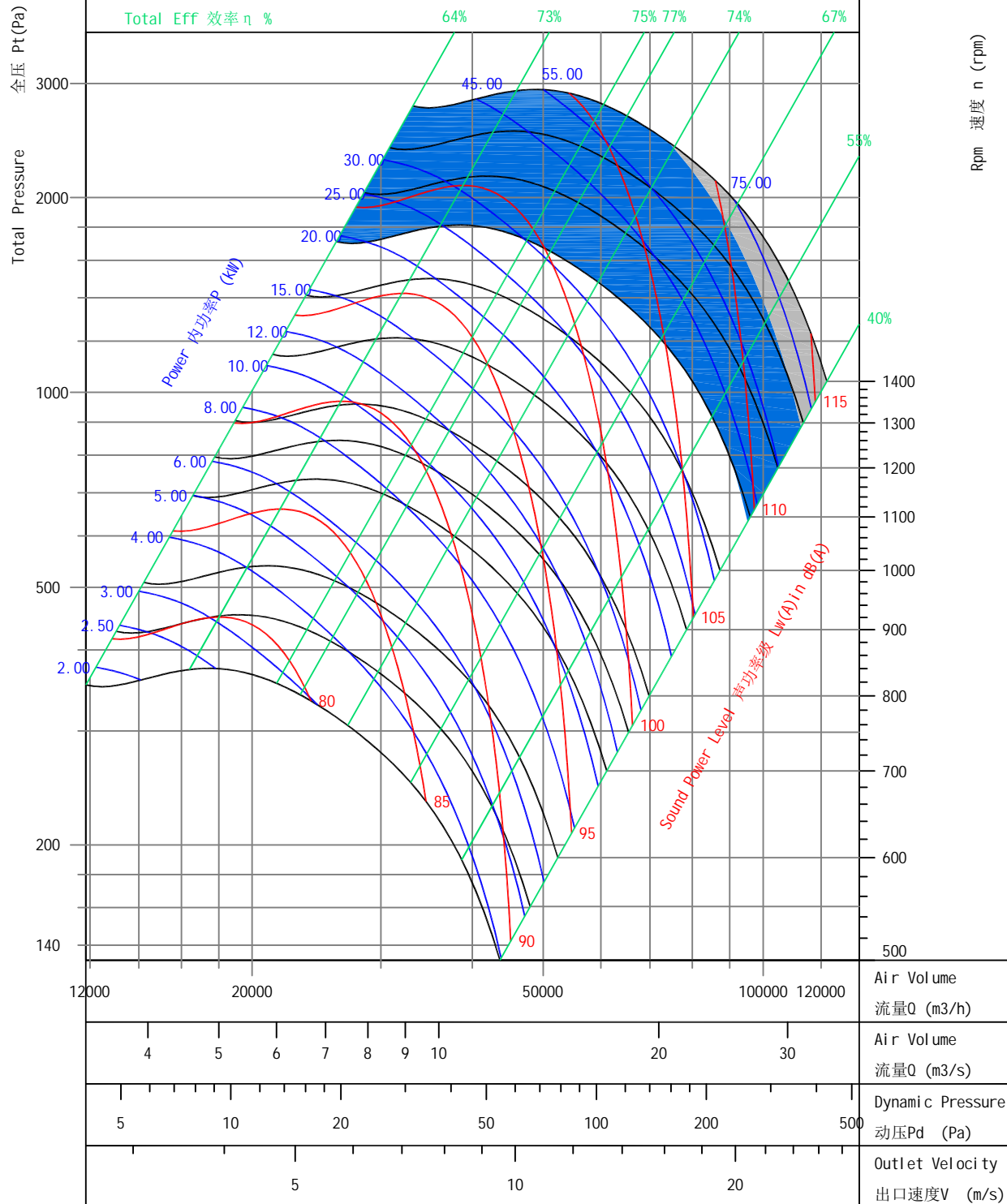


DFH900

FEG 80

出口面积 Outlet Area 1.268 m²
 气体密度 Gas Density 1.2kg/m³

K G



1. Performance certified is for installation type B-Free inlet, Ducted outlet. Power rating (kW) does not include transmission losses. Performance ratings do not include the effects of appurtenances (accessories).

2. The A-weighted sound ratings shown have been calculated per AMCA International Standard

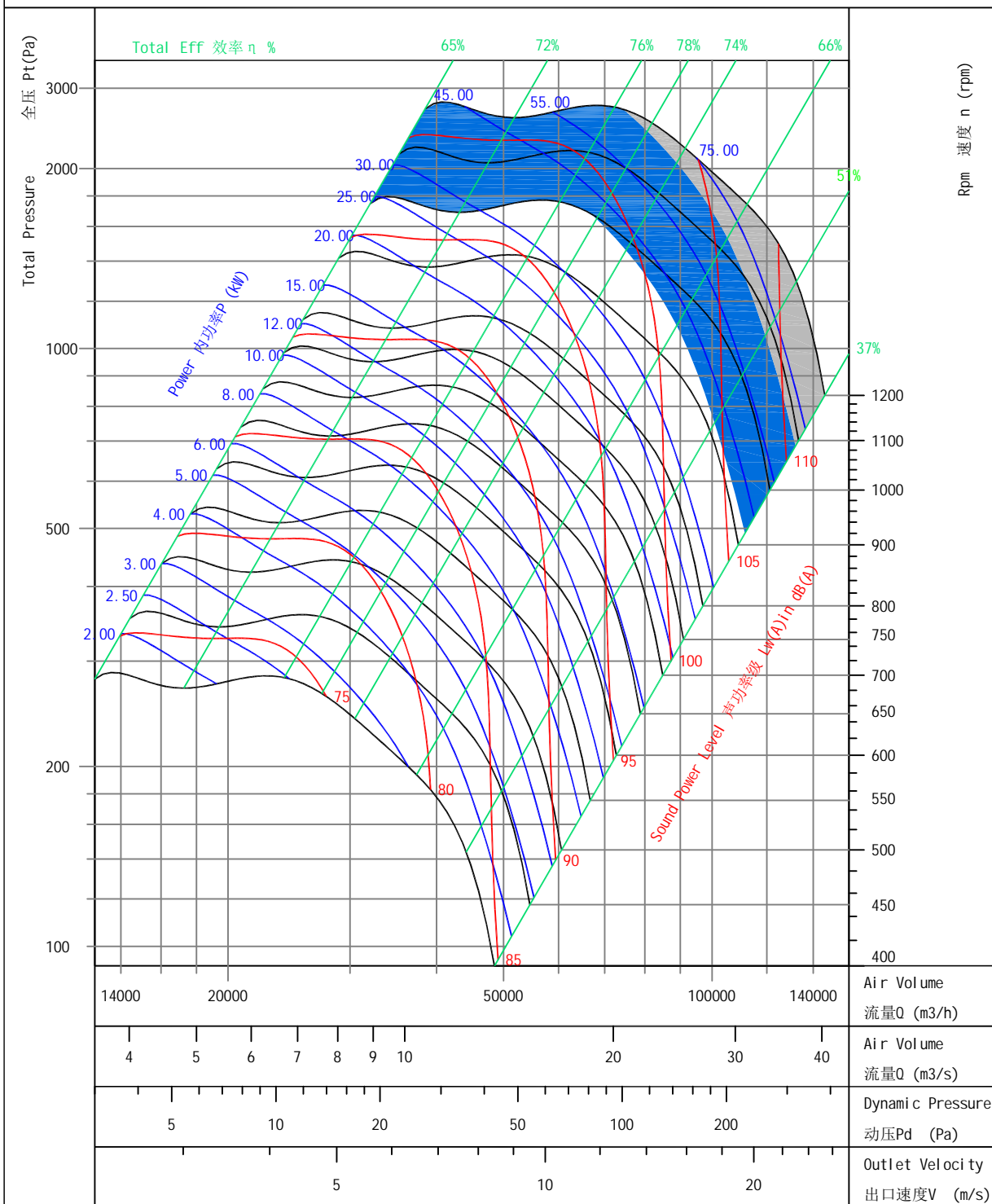
3. Values shown are for inlet L_{wiA} sound power levels for installation type B-free inlet, ducted outlet.

DFH1000

FEG 80

出口面积 Outlet Area 1.595 m²
 气体密度 Gas Density 1.2kg/m³

K G



1. Performance certified is for installation type B-Free inlet, Ducted outlet. Power rating(kW) does not include transmission losses. Performance ratings do not include the effects of appurtenances(accessories).
 2. The A-weighted sound ratings shown have been calculated per AMCA International Standard
 3. Values shown are for inlet $L_{w(A)}$ sound power levels for installation type B-free inlet, ducted outlet.



Germany Factory (HQ)

Germany Factory DLK Ventilatoren GmbH
Address Ziegeleistraße 18,
74214 Schontal, Germany
Phone +49 7943 91020
Email sales.asia@dlk.com

Malaysia Factory (Regional HQ)

Malaysia Factory DLK Ventilatoren Malaysia Sdn. Bhd.
Address 22, Jalan Mega 2/1, Kawasan
Perindustrian Mega 2, 43500 Semenyih,
Selangor, Malaysia
Phone (603) 8725 0845
Email sales@dlkasia.com

WWW.DLKASIA.COM

SALES NETWORK EUROPE

- Belgium• Poland• Switzerland• Turkey• Egypt• Great Britain
- Czech Republic • Kazakhstan

SALES NETWORK ASIA

- China • Malaysia • Vietnam • Singapore • Philippines • Taiwan
- Bangladesh • South Korea • Australia

Malaysia Distributor