



# WING TON FAN INDUSTRY LIMITED



YXD SERIES ADJUSTABLE PITCH AXIAL FLOW FANS  
**CATA-AMCA-YXD ,AUGUST 2023**



## YXD SERIES ADJUSTABLE PITCH AXIAL FLOW FANS

**Wing Ton Fan Industry Limited** certifies that the Axial Flow Fan – YXD240, 305, 380, 480, 610 and 760 shown herein are licensed to bear the AMCA Seal. The ratings shown are based on tests and procedures performed in accordance with AMCA Publication 211 and AMCA Publication 311 and comply with the requirements of the AMCA Certified Ratings Program.

The AMCA Certified Ratings Seal applies to FEG for Models YXD380, 480, 610 & 760 only.

The AMCA Certified Ratings Seal applies to air performance and sound for Models YXD240, 305, 380, 480, 610 and 760 only.



FOR YXD240, 305



FOR YXD380, 480, 610 & 760



The YXD Series of axial flow fans is available in an extensive range of variants and air flow performance. They can be manufactured to handle most conditions from ambient air and can be ordered in 6 sizes (240, 305, 380, 480, 610, 760mm) diameter. They are available in direct drive type and plate mounted type.



Typical Applications Commercial and industrial supply or exhaust air applications such as shopping centers, office buildings and car parks, through to industrial processes and equipment ventilation.

## FEATURE

### A. CASING

- Standard casings are made of steel
- Coated by strong epoxy powder.
- Equipped with complete flange and mounting feet.

### B. IMPELLER

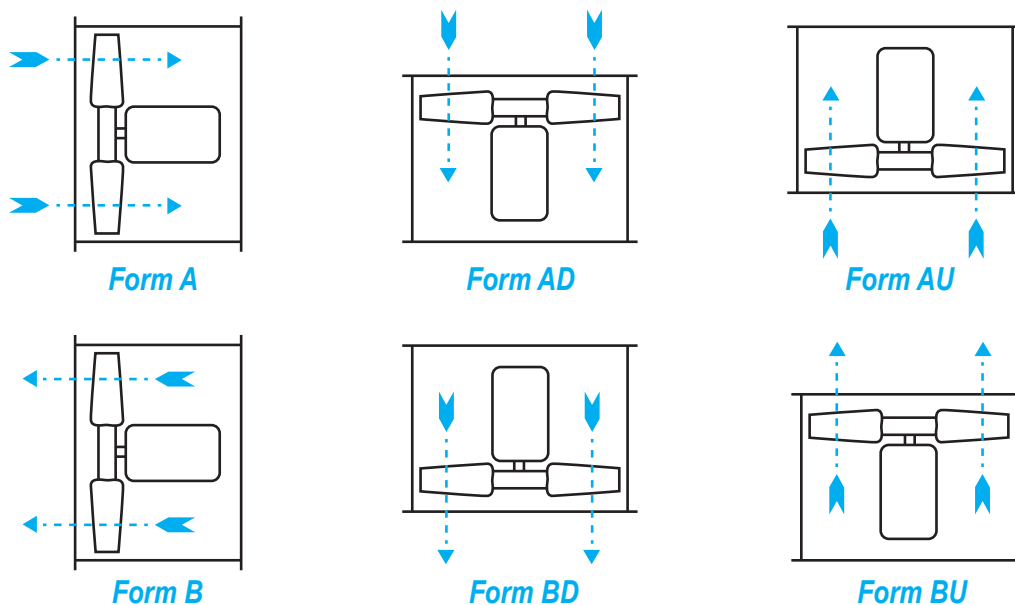
- All impellers are adjustable pitch aero foil section.
- Impeller material is made of die cast aluminum.
- With a specific impeller pitch angle, it ensures selections can be made accurately to the specification.

### C. MOTOR

- The standard motors used are foot or pad mounted.
- For normal duty, the motors are of squirrel cage, induction motors to suit virtually any application.
- They are fitted with ball or roller bearings which are fully enclosed and sealed-for life and therefore do not require maintenance.
- Motors are generally wound for 380V/3ph/50Hz or 220V/1ph/50Hz.
- Insulation to Class E with Class B temperature rise is used throughout, allowing for operation in ambient up to +40°C.

### D. DIRECTION OF AIRFLOW

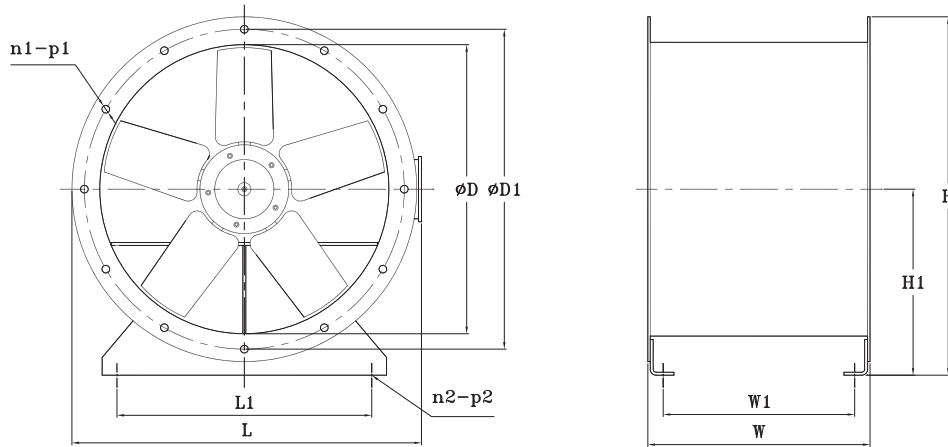
- The standard direction of air flow is Form B, BD and BU. However, Form A, AD and AU can be supplied if required. Motors operating at BD, DU, AD and AU require up thrust bearing. Please inform us in advance if the fans are installed vertically.



Performance for Form A airflow direction are not licensed by AMCA International

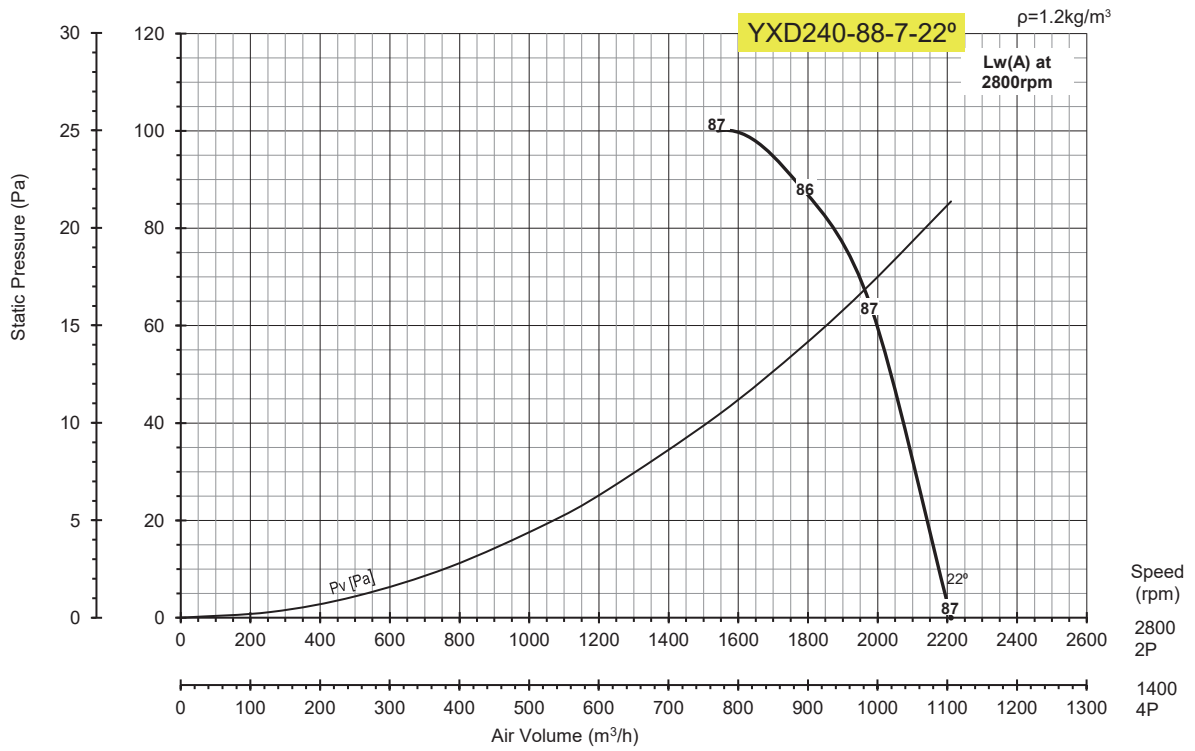
# Dimensions

( mm )



Model	$\phi D$	$\phi D1$	L	L1	W	W1	H	H1	n1-p1	n2-p2
YXD240	243	280	325	205	230	180	325	172	6- $\phi 10$	4- $\phi 10$
YXD305	312	355	408	260	290	237	408	210	8- $\phi 10$	4- $\phi 10$
YXD380	385	432	482	340	335	280	485	246	8- $\phi 10$	4- $\phi 13$
YXD480	488	540	593	430	375	313	605	316	12- $\phi 14$	4- $\phi 13$
YXD610	614	665	730	560	430	372	733	374	12- $\phi 14$	4- $\phi 13$
YXD760	768	830	910	--	550	--	875	473	12- $\phi 14$	--

# YXD SERIES AXIAL FLOW FAN



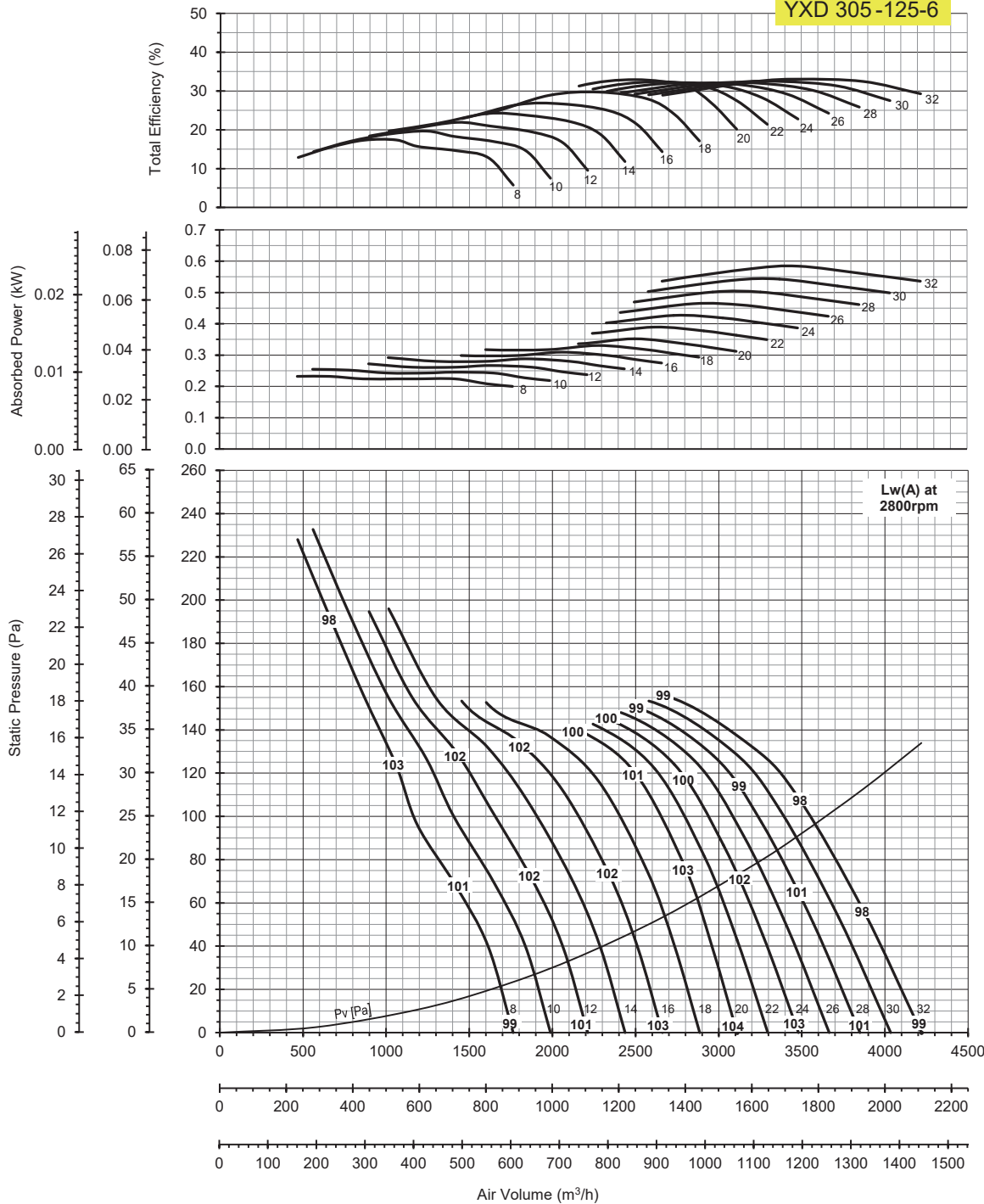
Model No	Speed(RPM)	Blade Angle	Motor(Kw)	Peak Absorbed Power(Kw)	LwA dB(A)
YXD240-88-7-22	1400	22	0.07	0.036	-19
	2800		0.37	0.288	0

- \* Performance certified is for installation type D –Ducted inlet, Ducted outlet. Performance ratings do not include the effects of appurtenances (accessories).
- \* The A-weighted sound ratings shown have been calculated per AMCA International Standard 301. Values shown are for LwiA sound power levels for installation type D: ducted inlet, ducted outlet. Ratings include the effects of duct end correction.

# YXD SERIES AXIAL FLOW FAN

$\rho=1.2\text{kg/m}^3$

YXD 305-125-6



At 960 RPM			
Model No	Blade Angle	Motor (Kw)	Peak Absorbed Power (Kw)
YXD305GFV	8	0.18	0.008
	10		0.008
	12		0.009
	14		0.01
	16		0.01
	18		0.011
	20		0.012
	22		0.013
	24		0.014
	26		0.015
	28		0.017
	30		0.018
32	0.019		
LwA dB(A)	-30		

At 1400 RPM			
Model No	Blade Angle	Motor (Kw)	Peak Absorbed Power (Kw)
YXD305FFV	8	0.18	0.029
	10		0.032
	12		0.034
	14		0.037
	16		0.039
	18		0.042
	20		0.044
	22		0.049
	24		0.053
	26		0.058
	28		0.063
	30		0.068
32	0.073		
LwA dB(A)	-18		

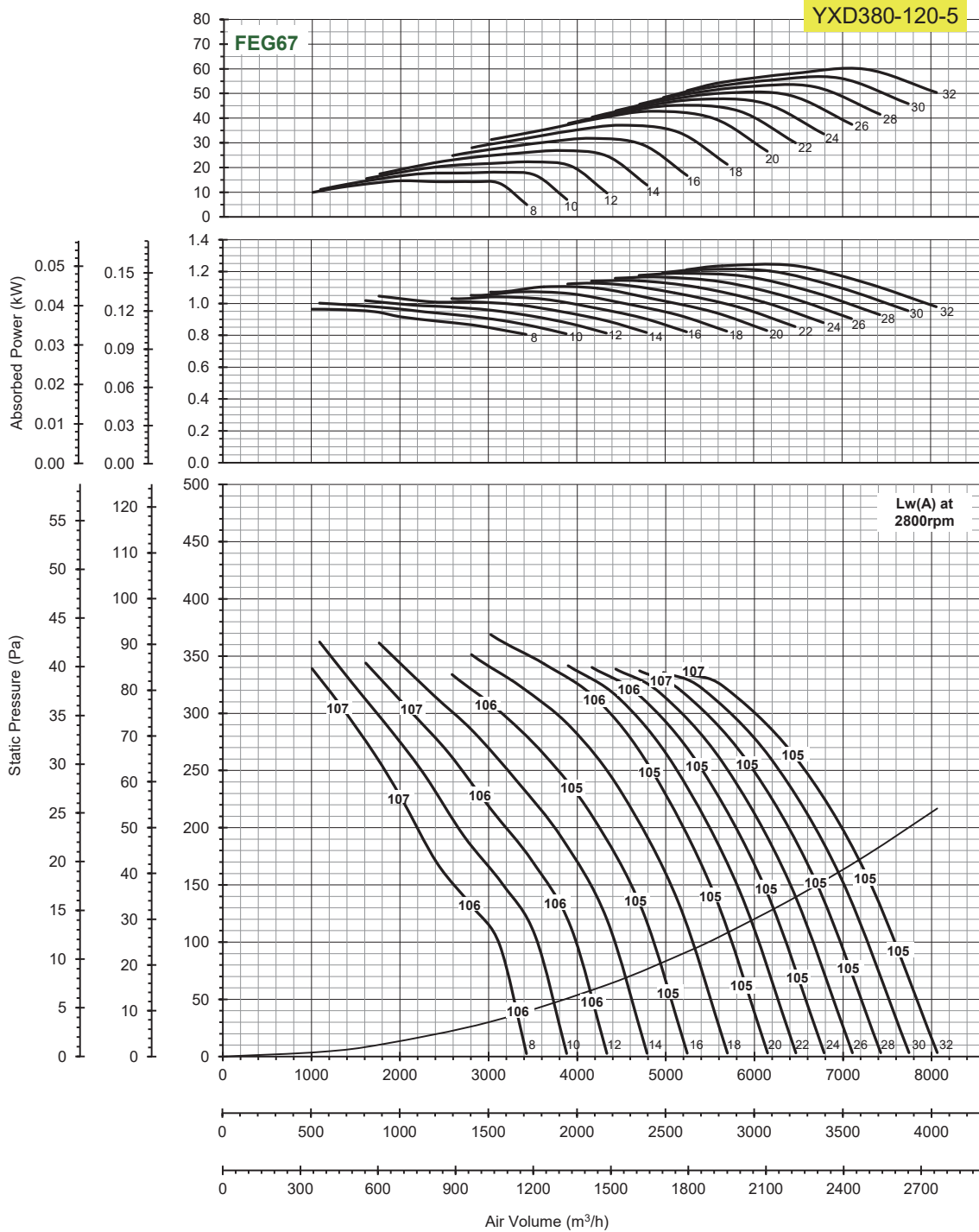
At 2800 RPM			
Model No	Blade Angle	Motor (Kw)	Peak Absorbed Power (Kw)
YXD305EFV-0.37	8	0.37	0.232
	10		0.256
	12		0.272
	14		0.292
	16		0.309
YXD305EFV-0.55	18	0.55	0.336
	20		0.352
	22		0.389
	24		0.427
	26		0.464
YXD305EFV-0.75	28	0.75	0.501
	30		0.543
	32		0.584
LwA dB(A)	0		

\* Performance certified is for installation type D –Ducted inlet, Ducted outlet. Performance ratings do not include the effects of appurtenances (accessories).

\* The A-weighted sound ratings shown have been calculated per AMCA International Standard 301. Values shown are for LwIA sound power levels for installation type D: ducted inlet, ducted outlet. Ratings include the effects of duct end correction.

# YXD SERIES AXIAL FLOW FAN

$\rho=1.2\text{kg/m}^3$



At 960 RPM			
Model No	Blade Angle	Motor (Kw)	Peak Absorbed Power (Kw)
YXD380GFV	8	0.18	0.039
	10		0.04
	12		0.041
	14		0.042
	16		0.042
	18		0.043
	20		0.044
	22		0.045
	24		0.046
	26		0.047
	28		0.048
	30		0.049
32	0.05		
LwA dB(A)	-31		

At 1400 RPM			
Model No	Blade Angle	Motor (Kw)	Peak Absorbed Power (Kw)
YXD380FFV	8	0.18	0.121
	10		0.125
	12		0.127
	14		0.131
	16		0.131
	18		0.134
	20		0.138
	22		0.14
	24		0.143
	26		0.146
	28		0.149
	30		0.152
32	0.155		
LwA dB(A)	-21		

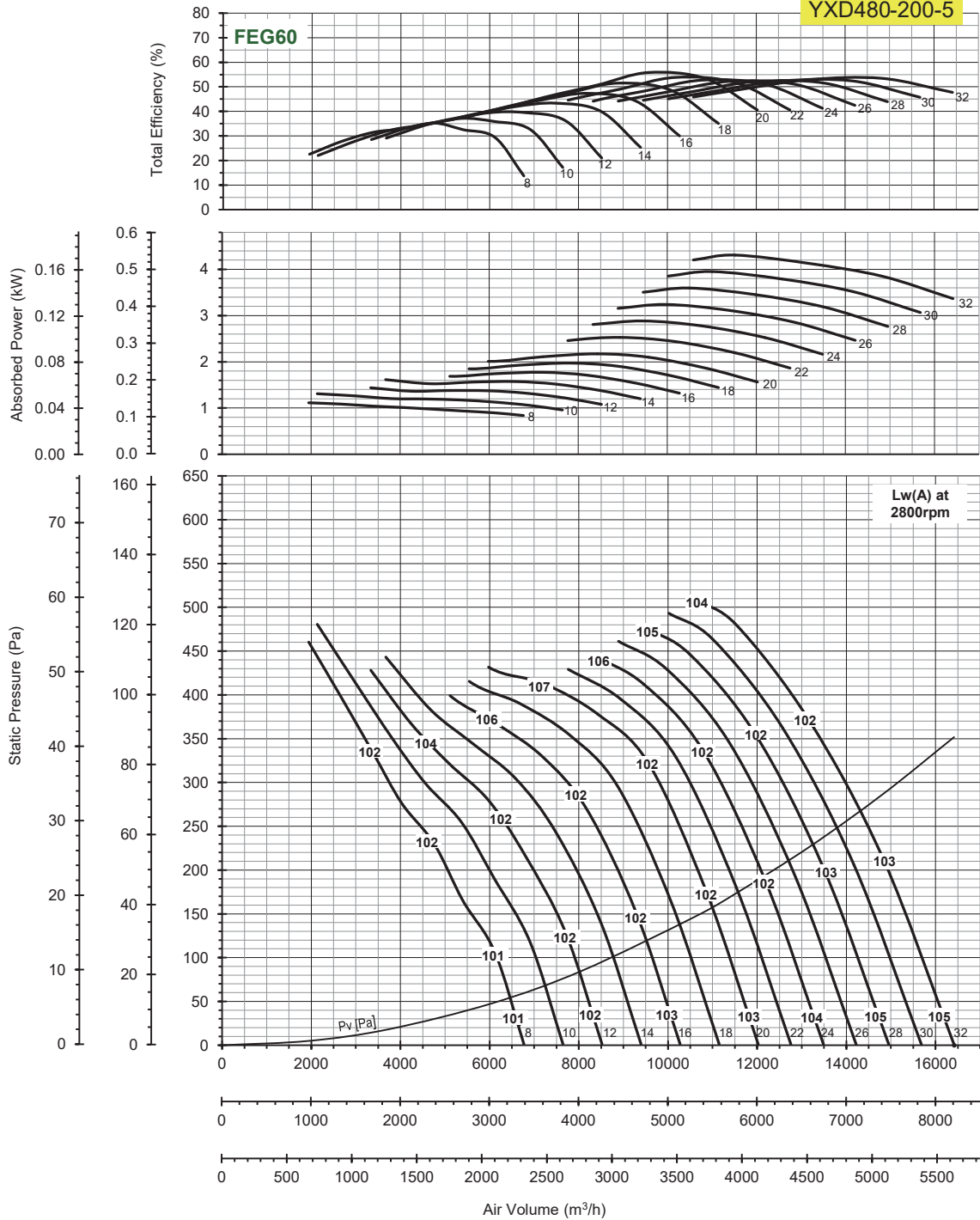
At 2800 RPM			
Model No	Blade Angle	Motor (Kw)	Peak Absorbed Power (Kw)
YXD380EFV-1.1	8	1.1	0.984
	10		1.002
	12		1.018
	14		1.046
	16		1.048
	18		1.073
YXD380EFV-1.5	20	1.5	1.104
	22		1.122
	24		1.142
	26		1.166
	28		1.189
	30		1.212
32	1.236		
LwA dB(A)	0		

\* Performance certified is for installation type D –Ducted inlet, Ducted outlet. Performance ratings do not include the effects of appurtenances (accessories).  
 \* The A-weighted sound ratings shown have been calculated per AMCA International Standard 301. Values shown are for Lw(A) sound power levels for installation type D: ducted inlet, ducted outlet. Ratings include the effects of duct end correction.

# YXD SERIES AXIAL FLOW FAN

YXD480-200-5

$\rho=1.2\text{kg/m}^3$



Speed  
2800  
2P  
1400  
4P  
960  
6P

At 960 RPM			
Model No	Blade Angle	Motor (Kw)	Peak Absorbed Power (Kw)
YXD480GFV	8	0.18	0.045
	10		0.053
	12		0.058
	14		0.065
	16		0.071
	18		0.079
	20		0.087
	22		0.102
	24		0.116
	26		0.131
	28		0.145
	30		0.159
32	0.174		
LwA dB(A)	-27		

At 1400 RPM			
Model No	Blade Angle	Motor (Kw)	Peak Absorbed Power (Kw)
YXD480FFV-0.18	8	0.18	0.139
	10		0.164
	12		0.18
	14		0.202
YXD480FFV-0.37	16	0.37	0.222
	18		0.247
	20		0.271
	22		0.316
	24		0.36
	26		0.405
YXD480FFV-0.55	28	0.55	0.45
	30		0.494
	32		0.539
	LwA dB(A)		-17

At 2800 RPM			
Model No	Blade Angle	Motor (Kw)	Peak Absorbed Power (Kw)
YXD480EFV-1.5	8	1.5	1.114
	10		1.309
	12		1.438
YXD480EFV-2.2	14	2.2	1.614
	16		1.772
	18		1.972
	20		2.171
YXD480EFV-3	22	3	2.527
	24		2.883
YXD480EFV-4	26	4	3.24
	28		3.596
	30		3.952
YXD480EFV-5.5	32	5.5	4.308
LwA dB(A)	0		

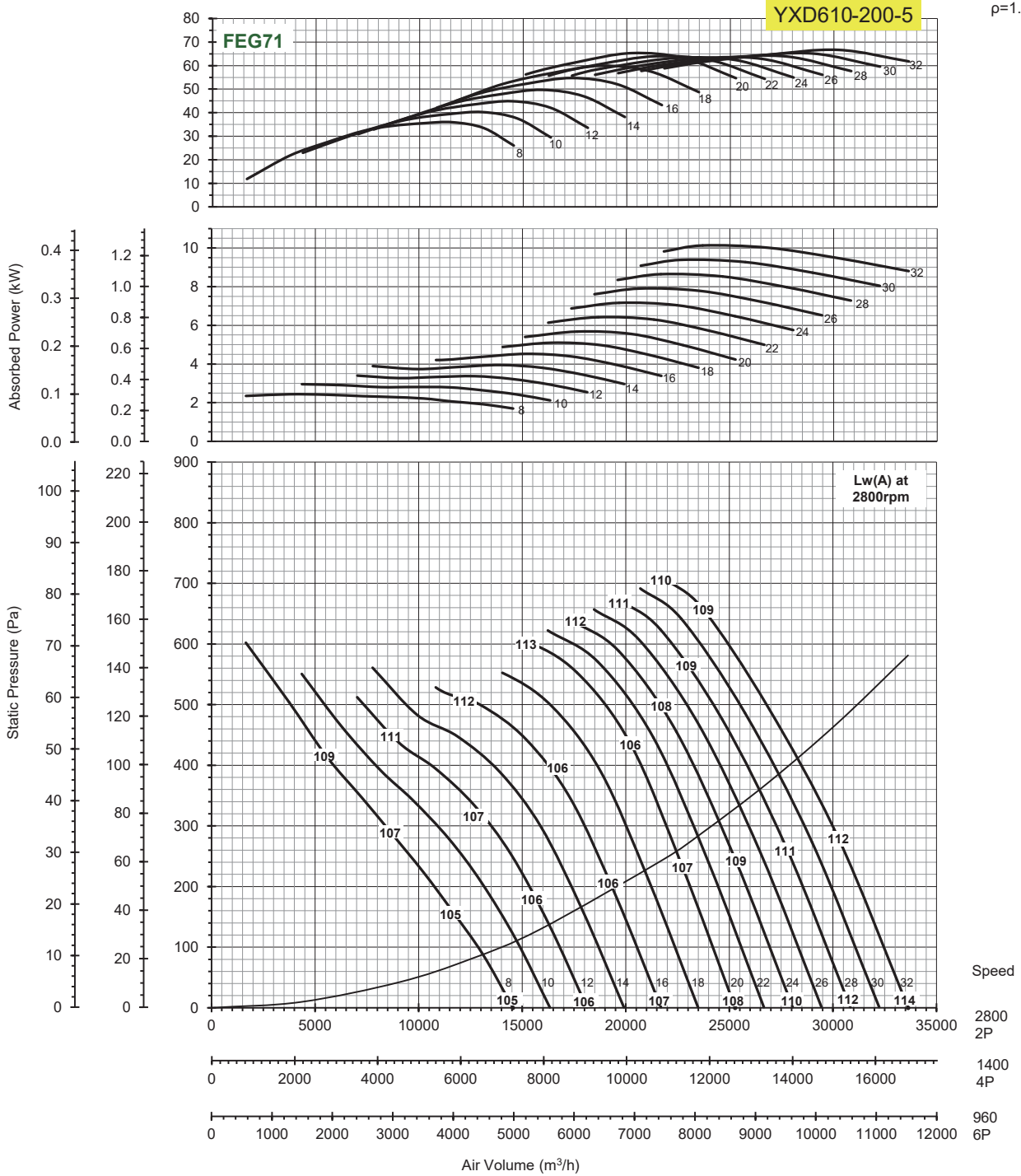
\* Performance certified is for installation type D –Ducted inlet, Ducted outlet. Performance ratings do not include the effects of appurtenances (accessories).

\* The A-weighted sound ratings shown have been calculated per AMCA International Standard 301. Values shown are for LwiA sound power levels for installation type D: ducted inlet, ducted outlet. Ratings include the effects of duct end correction.



# YXD SERIES AXIAL FLOW FAN

$\rho=1.2\text{kg/m}^3$



At 960 RPM			
Model No	Blade Angle	Motor (Kw)	Peak Absorbed Power (Kw)
YXD610GFV-0.18	8	0.18	0.098
	10		0.119
	12		0.137
	14		0.159
YXD610GFV-0.37	16	0.37	0.182
	18		0.206
	20		0.229
	22		0.259
	24		0.289
	26		0.318
	28		0.348
	30		0.378
32	0.408		
LwA dB(A)	-28		

At 1400 RPM			
Model No	Blade Angle	Motor (Kw)	Peak Absorbed Power (Kw)
YXD610FFV-0.37	8	0.37	0.304
	10		0.369
YXD610FFV-0.55	12	0.55	0.425
	14		0.493
YXD610FFV-0.75	16	0.75	0.565
	18		0.637
	20		0.709
YXD610FFV-1.1	22	1.1	0.802
	24		0.895
	26		0.988
	28		1.081
YXD610FFV-1.5	30	1.5	1.173
	32		1.266
LwA dB(A)	-18		

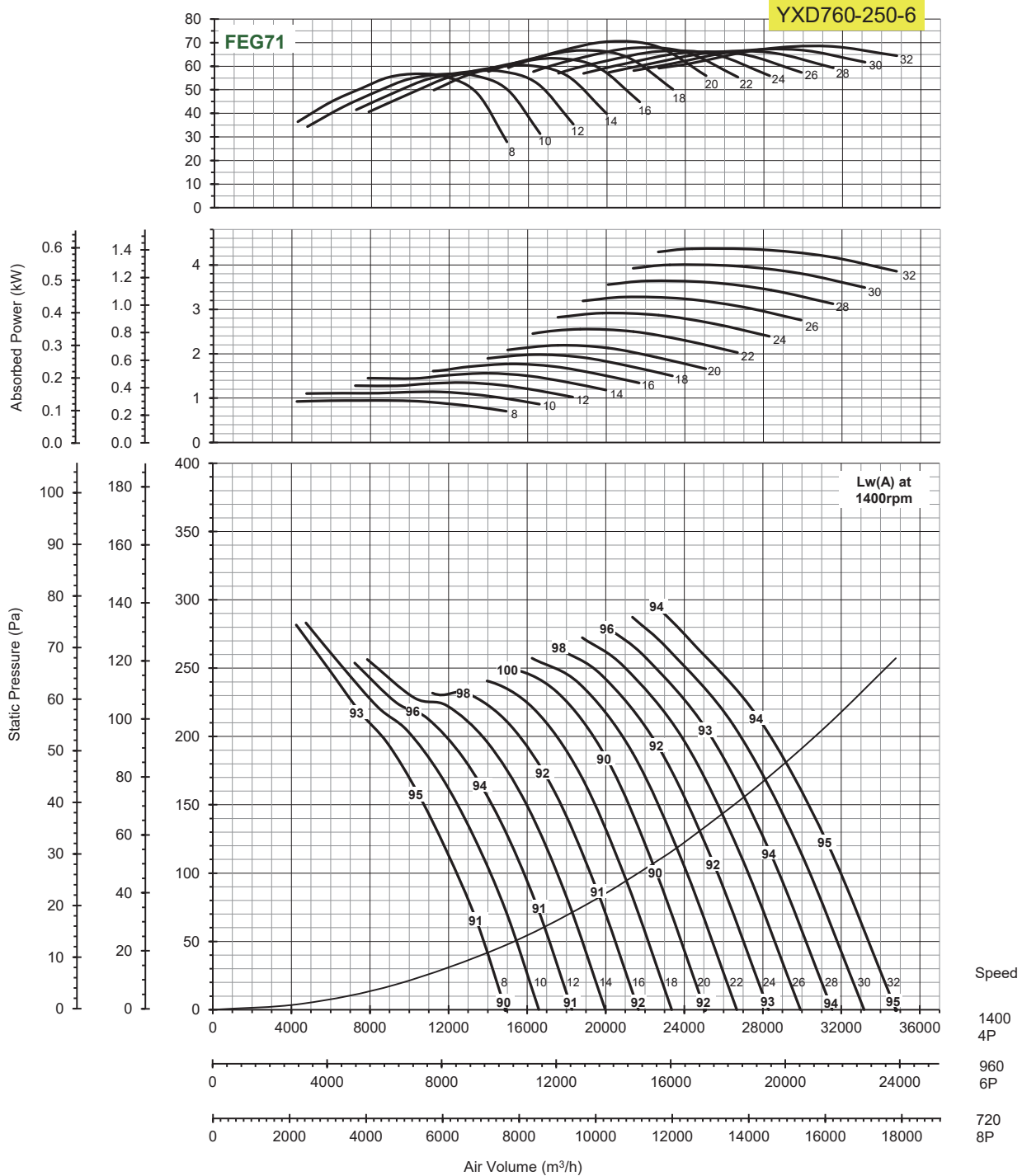
At 2800 RPM			
Model No	Blade Angle	Motor (Kw)	Peak Absorbed Power (Kw)
YXD610EFV-3	8	3	2.434
	10		2.955
YXD610EFV-4	12	4	3.398
	14		3.946
YXD610EFV-5.5	16	5.5	4.523
	18		5.099
	20		5.675
YXD610EFV-7.5	22	7.5	6.417
	24		7.16
	26		7.902
	28		8.644
YXD610EFV-11	30	11	9.387
	32		10.129
	LwA dB(A)		0

\* Performance certified is for installation type D –Ducted inlet, Ducted outlet. Performance ratings do not include the effects of appurtenances (accessories).

\* The A-weighted sound ratings shown have been calculated per AMCA International Standard 301. Values shown are for Lw(A) sound power levels for installation type D: ducted inlet, ducted outlet. Ratings include the effects of duct end correction.

# YXD SERIES AXIAL FLOW FAN

$\rho=1.2\text{kg/m}^3$



At 960 RPM			
Model No	Blade Angle	Motor (Kw)	Peak Absorbed Power (Kw)
YXD760GFV-0.37	8	0.37	0.305
	10		0.367
YXD760GFV-0.55	12	0.55	0.435
	14		0.503
YXD760GFV-0.75	16	0.75	0.571
	18		0.638
	20		0.706
YXD760GFV-1.1	22	1.1	0.823
	24		0.94
	26		1.057
YXD760GFV-1.5	28	1.5	1.174
	30		1.291
	32		1.407
LwA dB(A)	-9		

At 1400 RPM			
Model No	Blade Angle	Motor (Kw)	Peak Absorbed Power (Kw)
YXD760FFV-1.1	8	1.1	0.946
	10		1.139
YXD760FFV-1.5	12	1.5	1.349
	14		1.56
YXD760FFV-2.2	16	2.2	1.77
	18		1.98
	20		2.19
YXD760FFV-3	22	3	2.553
	24		2.915
YXD760FFV-4	26	4	3.278
	28		3.64
YXD760FFV-5.5	30	5.5	4.003
	32		4.365
LwA dB(A)	0		

\* Performance certified is for installation type D –Ducted inlet, Ducted outlet. Performance ratings do not include the effects of appurtenances (accessories).

\* The A-weighted sound ratings shown have been calculated per AMCA International Standard 301. Values shown are for LwA sound power levels for installation type D: ducted inlet, ducted outlet. Ratings include the effects of duct end correction.





## WING TON FAN INDUSTRY LIMITED

---



Address: 1B KAM SHING IND BLDG,1-11 KWAI WING RD.KOWLOON,HONG KONG.

Tel: (852) 2410 9038 Fax: (852) 2487 7317

E-mail: [edwin@wington.hk](mailto:edwin@wington.hk) <http://www.wington.com>