

服务网点 Service Network

Inso(G.Z) Ventilation Technology Co.,Ltd.

广州英铄通风技术有限公司

地址：广州市花都区107国道以西三华工业区自编168号

工厂地址：广东肇庆德庆县工业园平安路

TEL：+86 2036969046

FAX：+86 2080671032

EMAIL：sales@insofan.com

www.insofan.com

英铄科技（武汉）有限公司

地址：武汉东西湖区革新大道568号11层

TEL：+86 18620106839

FAX：+86 27 87718963

EMAIL：yj.qi@insofan.com

英铄环境科技（武汉）有限公司

地址：武汉东西湖区国家网安基地孵化器2层

TEL：+86 18927511806

EMAIL：pp.yin@insofan.com

英铄装备制造(肇庆)有限公司

地址：肇庆高新区工业大街29号厂房9

TEL：+86 18320037488

EMAIL：zs.long@insofan.com

英铄通风技术-上海办事处

地址：上海市松江区博安路377号立同国际商务广场2078室

TEL：+86 13694217100

EMAIL：lb.wei@insofan.com

英铄通风技术-西安办事处

地址：陕西省西安市长安区西太路翠微路西安高新综合保税区东门

TEL：+86 15827304780

EMAIL：wx.ma@insofan.com

英铄通风技术-北京办事处

地址：北京市通州区马驹镇马驹桥一号桥

TEL：+86 18520542916

EMAIL：ya.wang@insofan.com

英铄通风技术-成都办事处

地址：成都郫都区蜀新大道北一段306号科创中心A栋6楼

TEL：+86 18320697860

EMAIL：xm.chen@insofan.com



INSOFAN[®]
英铄通风 Ventilation Tech

单进风系列风机

Single-inlet Centrifugal Fan





INSO(Guangzhou) Ventilation Technology Co.,Ltd certifies that the BAS Series shown herein are licensed to bear the AMCA Seal. The ratings shown are based on tests and procedures performed in accordance with AMCA Publication 211 and AMCA Publication 311 and comply with the requirements of the AMCA Certified Ratings Program.

广州英铄通风技术有限公司特此证明，此处所示BAS系列获得了加盖AMCA印章的授权。所示额定值系根据 AMCA 出版物 211和 AMCA 出版物 311，所进行测试和程序确定，并符合 AMCA 认证额定值计划的要求。



Contents 目录

Company Profile	公司简介	-----	01
Fan Introduction	风机介绍	-----	04
Fan Performance	风机性能	-----	08
Installation Dimension	安装尺寸	-----	24
Accessory	附件	-----	32

通风技术领导者

LEADER OF VENTILATION TECHNOLOGY

Introduction

公司简介

广州英铄通风技术有限公司，空调及工业通风技术方案解决专家，公司拥有强大的技术团队，整合了欧洲以及美国通风设备技术，开发了一系列性能更优的产品。我们为客户量身打造行业内最优化的风机应用方案以及从事相关产品销售、空气调节机组配套、系统集成配套、设备通风配套，工程项目设计与开发、工程项目安装与调试等服务。公司在为用户提供国内外先进工艺系统及产品设备、专业的技术支持和售后服务的同时，在全国各地积累了各种大、中型工程项目经验。

我们的优势行业：

暖通通风行业 / 除湿行业配套 / 大型气膜配套 / 电气设备配套
/ 工业除尘配套 / 废气处理配套 / 新风系统

在广大客户的支持和全体员工的共同努力下，我们的目标是以高科技的优质产品满足客户的需要，以完美的质量和服务赢得广大客户的信赖。

Guangzhou INSO Ventilation Technology Ltd., is an air conditioning, dehumidification, building and industrial ventilation technology solution expert. The company with a strong technical team and an integration of Korea, Europe and the United States ventilation equipment technology, has developed a series of performance driven products. We offer our customers the industry's most optimized fan application programs and engage in related product sales, air-conditioning units supporting, systems integration support, ventilation equipment support, project design and development, and project installation and commissioning services. While providing users with advanced technology systems and products, professional technical support and after-sales service, the company has accumulated a variety of large and medium-sized engineering projects experience throughout the nation.

We are best in:

HVAC ventilation industry / Dehumidification industry support /
Large gas film support / Electrical equipment support / industrial dust support / gas treatment support

Under the major support from customers and the joint efforts of all staff, our objective is to deliver high-tech quality products to meet customer needs, and to perfect the quality and service to win the trust of our customers.

Our company's philosophy is: Innovative, Professional, Quality, Integrity

Our wish: To become the most trustworthy air conditioning technology experts for all the customers



Matting & Supporting Manufacturing Factory 配套生产基地



英铄生产基地位于景色秀丽的广东肇庆，拥有15万平方米大型生产厂房，1000多名员工，是华南地区最具规模的风机专业制造基地

建立了完善的生产加工系统，在各个关键工序应用先进的数控自动化设备，大型数控旋压机、高速激光切割机，先进的数控钣金加工中心，确保每个零件都得到精心制造。

能快速响应非标产品的制造，年总生产能力达到50万台。

INSO manufacturing base covers area of 15000 square meters, has more than 100 employees, and owns the largest ventilation equipment manufacture base in South China.

The manufacturing base has established a perfect producing & processing system, and adopted the advanced CNC sheet metal processing center into each key manufacture process to make sure every spare parts be elaborately made.

The factory is capable of quick manufacturing non-standard products, and has annual production capacity of more than 500,000 fans.

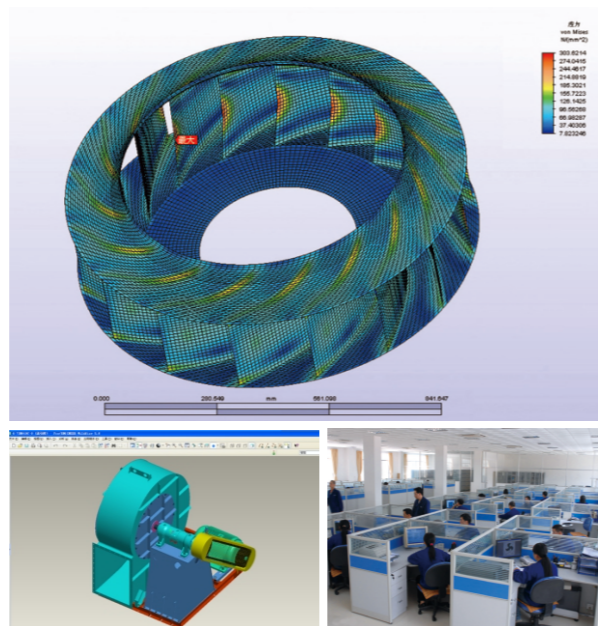
Inso Design Ability

英铄设计能力

拥有先进的设计平台和丰富的研发数据库，以及10年来行业通风应用经验，利用CFD技术和先进的CAD软件，不断优化和提升产品性能、确保安全高效；

能快速响应客户的非标产品设计，根据不同需求定制产品。

Inso has advanced design platform and ample R&D database, and 10 years industry ventilation application experience, Using CFD technology and CAD software, ensures the improving, and excellent aerodynamic performance and the usage safety for tis products.



1.0 BAS翼型单进风风机 1.0 BAS Single-inlet Fan with Airfoil Blades

1. 产品特征 Technical specification

1.1 叶轮: BAS叶轮是我司根据空气动力学, 新型翼型设计概念研发出的新型翼型单进风风机, 叶轮通过优化设计, 摒弃了8片, 9片低成本应用, 采用11片叶片设计, 大大提高了叶轮的有效功率, 并且叶片采用新型的机翼型叶片结构, 提高翼型的升力。BAS高转速叶轮还焊接有叶轮加强环加强叶轮结构。

1.2 机壳: 机壳采用连续焊接而成, 侧板采用数控激光切割而成保证高精度的型线, 保证了风机多变的安装强度。

1.3 平衡: 每个叶轮在装配前都经过动平衡, 平衡精度满足ISO 1940 和AMCA 204 标准中G 2.5标准。



1. Product characteristics

1.1 Impeller: BAS impeller is a kind of new airfoil centrifugal fan developed by our company according to aerodynamics and new airfoil design concept. Instead of 8 and 9 blades with low cost application, 11 blades are adopted based on optimized design of impeller, which can greatly improve the effective power of impeller. Furthermore, new airfoil blade structure is utilized to improve the lift of airfoil. Diffusion design is adopted for the outlet of impeller to achieve higher efficiency and lower outlet noise. The reinforcing steel ring will be added to the high speed impeller.

1.2 Scroll: The casing with continuous welding is cut by laser-cutting machine with high quality.

1.3 Balance: all wheel are statically and dynamically balanced to ISO1940 and AMCA 204-G2.5 standard.

2. 结构形式

单进风风机为了适应不同行业的应用, 电机可采用不同的安装方式:

RMF-无框架悬挂式/立式直连结构, 电机为B5安装电机;

MK-方形直连结构, 电机为B3安装;

也可定制为两端支撑皮带传动结构以及悬臂支撑结构, 详情请咨询英铄公司。

2. Structure

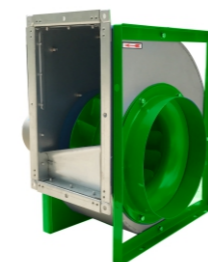
The motor can be used different installation type to the single-inlet fan which can be used to different application;

RMF-No frame, hanging installation/Vertical installation, the motor is B5 type installation.

MK-Cube direct driving installation, the motor is B3 type.

The double end supporting installation and cantilever installation can be customized, please contact to INSO company for the details

单进风结构 Structures for single-inlet fan



RF镀锌蜗壳角铁框架结构
RF galvanized casing & iron frame



MK整体焊接蜗壳结构
MK overall welding casing



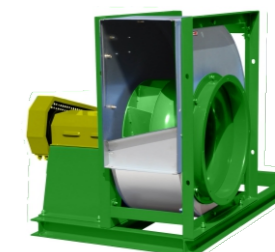
RFC1皮带传动结构
RFC1 belt-drive



RMF立式结构
RMF vertical structure



DK轻型结构
DK light-design



RFC2 皮带传动结构
RFC2 belt-drive

非标定制能力 Non-standard design



加长轴设计
long shaft design

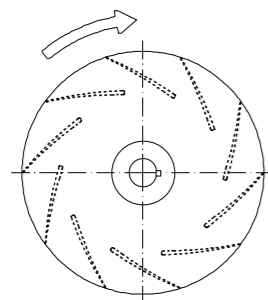


全不锈钢制作
overall stainless-steel production

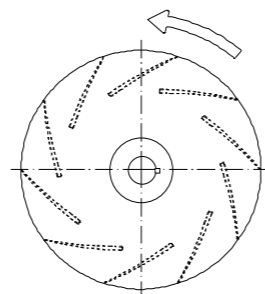


3. 旋转方向 Rotation Direction

从驱动侧看 View from drive side:



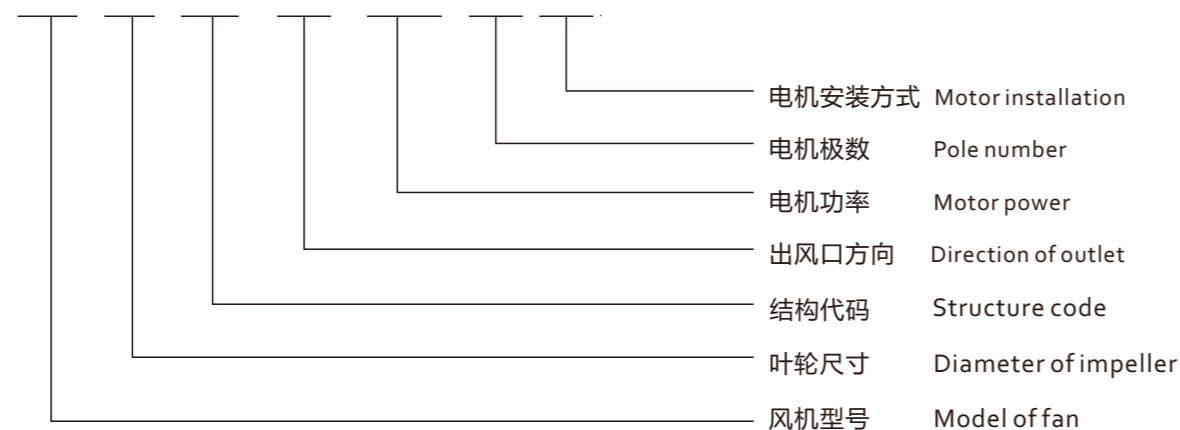
RD-顺时针 clockwise



LG-逆时针 counter clockwise

4. 产品命名方式 Designation of Products

BAS 355- MK - LG90-4Kw - 2P - B3



5. 性能参数 performance parameters

产品特点: 11片翼型叶片设计, 六种结构可选
型号: 250-1400
风量范围: 500-60,000 CMH
压力范围: 150-2700 Pa

Product features: 11 pieces airfoil blade design,
Six structures can be selected.
Size: 250-1400
Air Volume: 500-60,000 CMH
Pressure: 150-2700 Pa

6. 用途及使用条件 Usage and condition of use

6.1. 用途

一般空调用风机, 除湿空调转轮再生用风机;
小型空间一般排烟除尘用风机;
喷涂设备用风机;

6.2. 输送介质要求:

空气或其他无腐蚀性、不易燃易爆、不含粘性物质的气体, 气体经除尘后所含尘土及硬物颗粒含量不大于 150mg/m³。

6.3. 输送介质温度:

正常状态下, 风机输送介质温度不高于80°C, 如有特殊温度要求, 请咨询英铄公司。

6.1. Usage

General air condition fan, regeneration fan for dehumidification ree;
smoking/air ejecting fan for small space.
coating equipment fan

6.2. Transport media requirement:

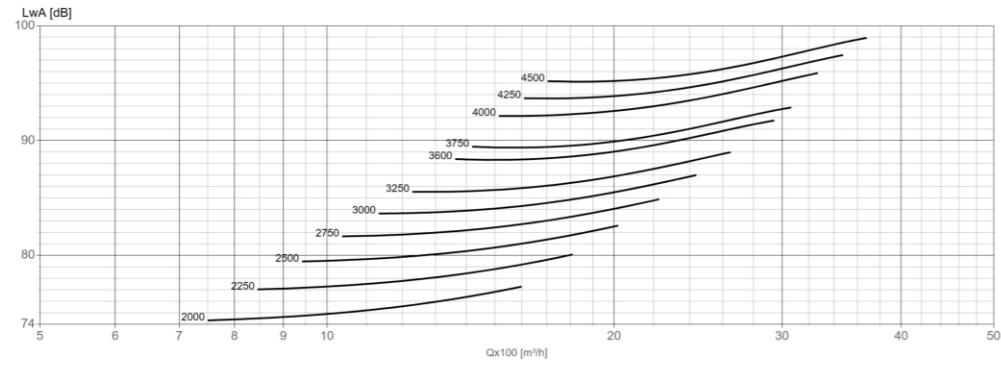
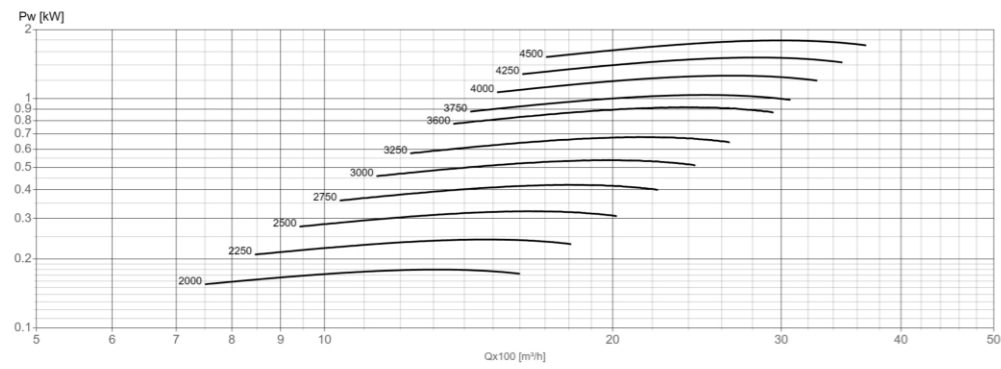
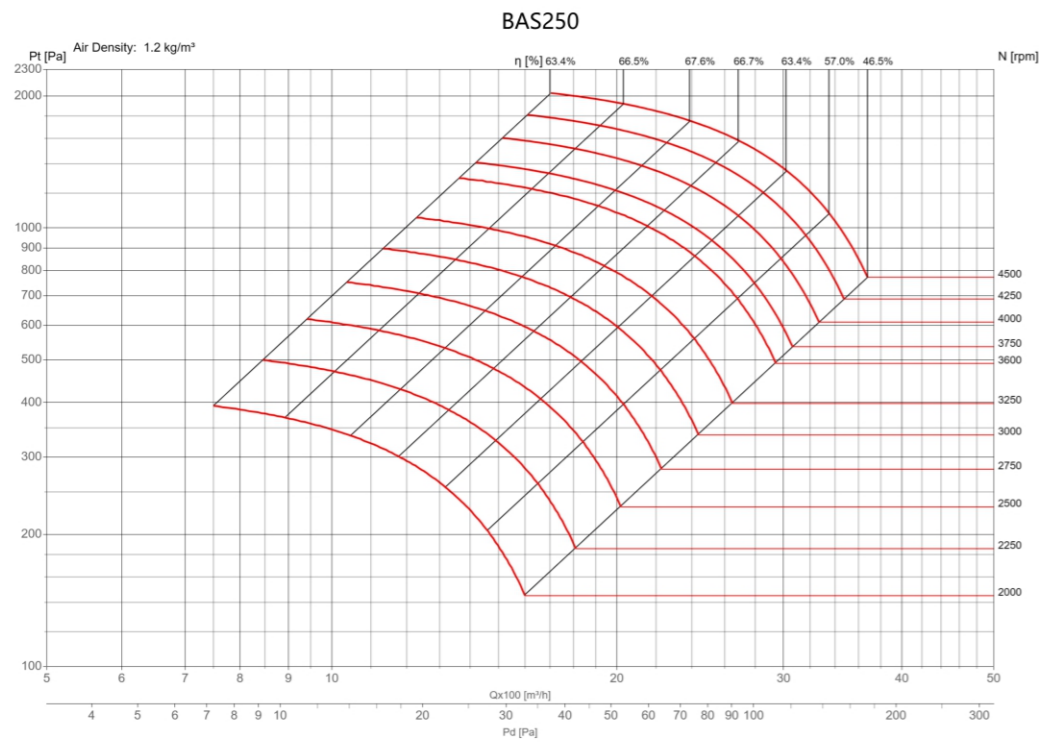
Air or other non-corrosive and non-flammable gases without viscous substances.
After dust removal, the content of dust and hard particles in gas shall not be more than 150mg/m³. Necessary wear resistant measures must be taken for fan to prolong its service life; Composite gas can be used as transport media for hot smoke exhaust.

6.3. Transport media temperature:

Under normal condition, the transport media temperature shall not beyond 80°C. If there are higher temperature application, please contact INSO company.

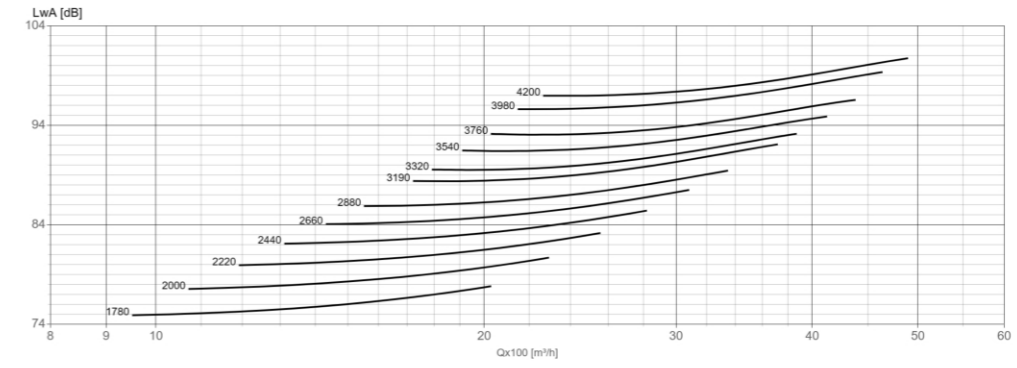
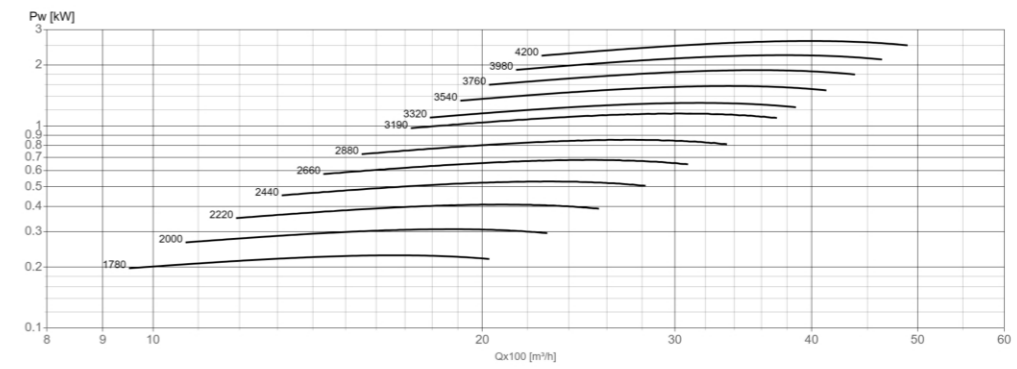
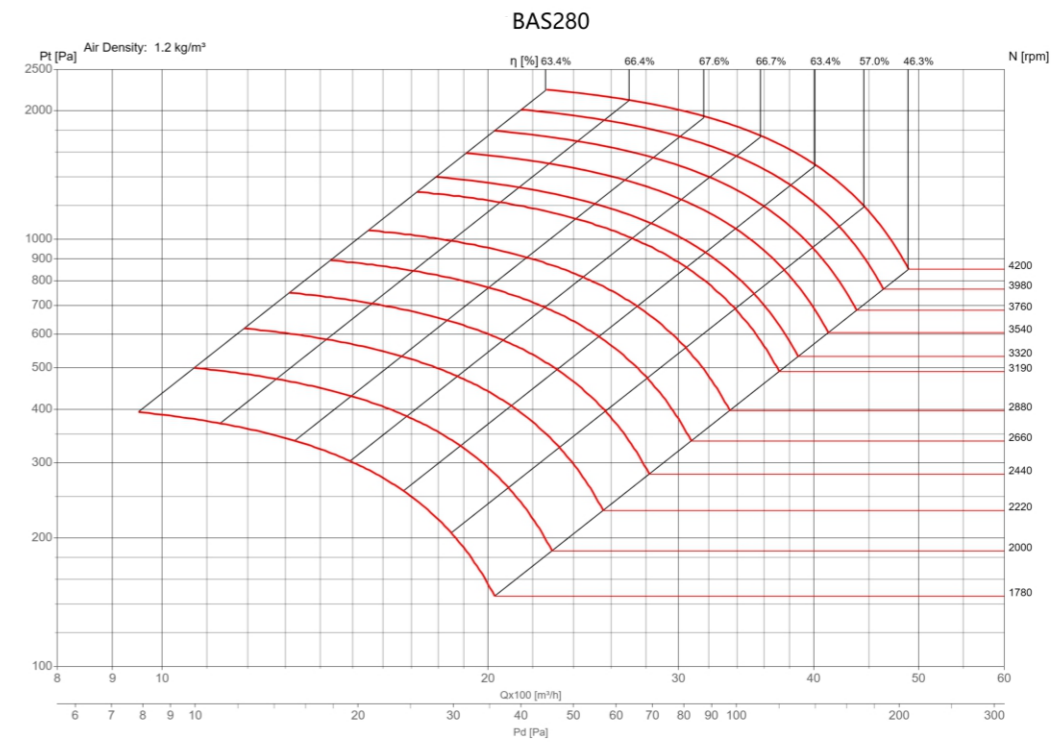
➤ 2.0 风机性能 Fan Performance

BAS Series



Performance certified is for installation type B-Free inlet, Ducted outlet.
Performance ratings do not include the effects of appurtenances (accessories)
Power rating kW does not include transmission losses.
The A-weighted sound ratings shown have been calculated per AMCA international Standard 301.
Values shown are for inlet LwiA sound power levels for Installation type B:free inlet, ducted outlet.

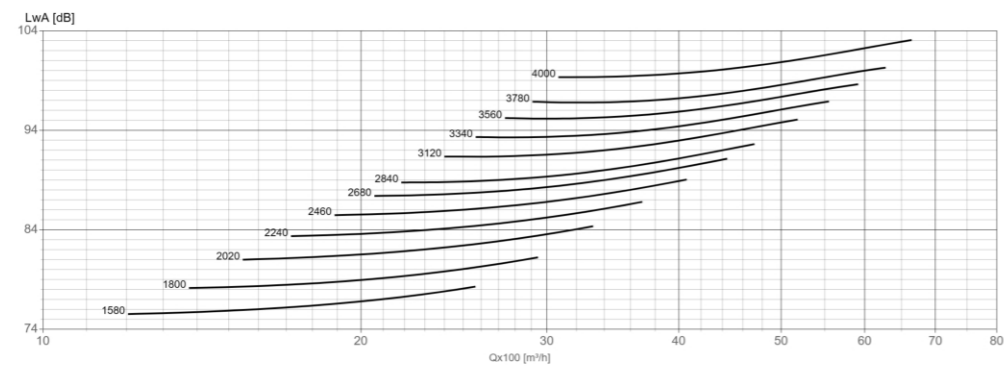
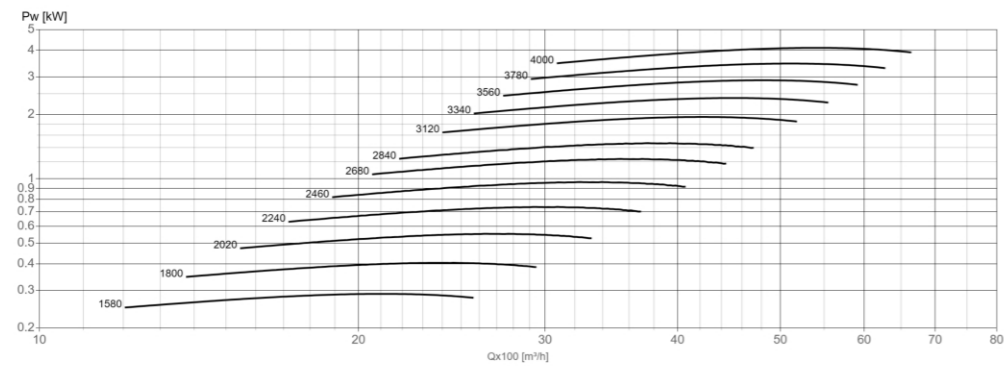
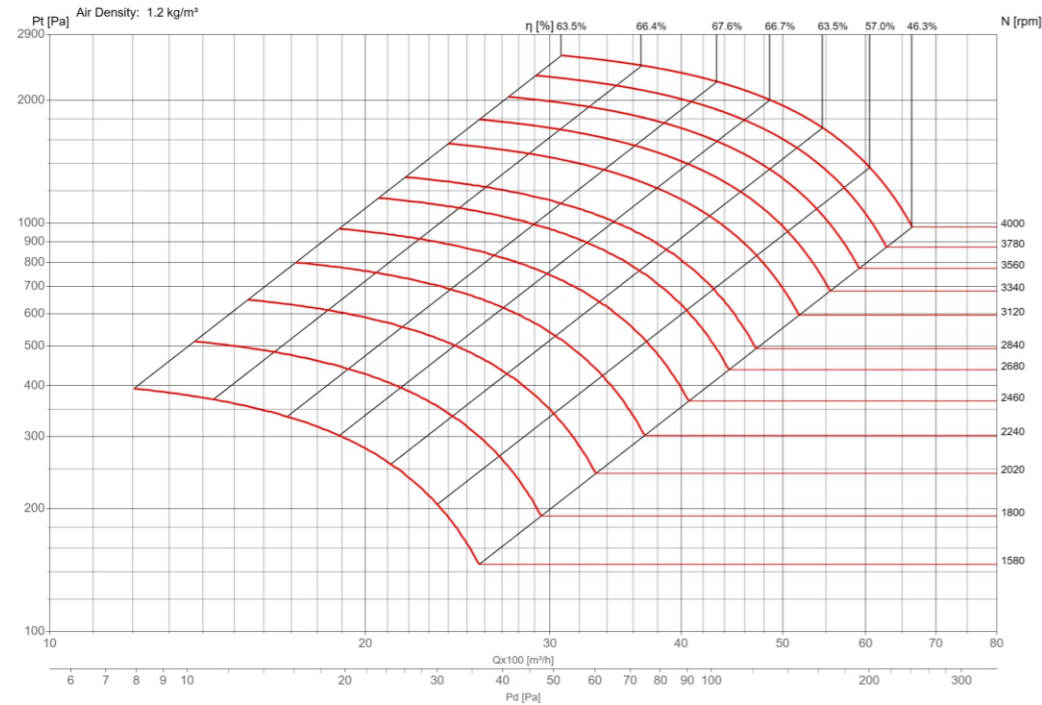
BAS Series



Performance certified is for installation type B-Free inlet, Ducted outlet.
Performance ratings do not include the effects of appurtenances (accessories)
Power rating kW does not include transmission losses.
The A-weighted sound ratings shown have been calculated per AMCA international Standard 301.
Values shown are for inlet LwiA sound power levels for Installation type B:free inlet, ducted outlet.

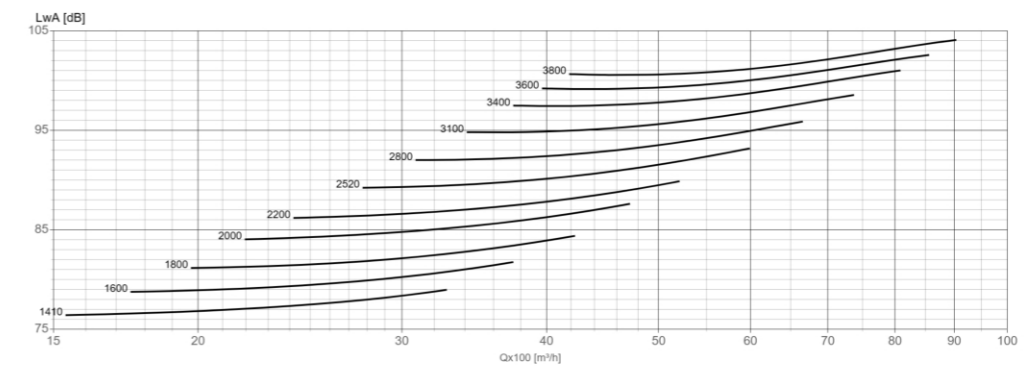
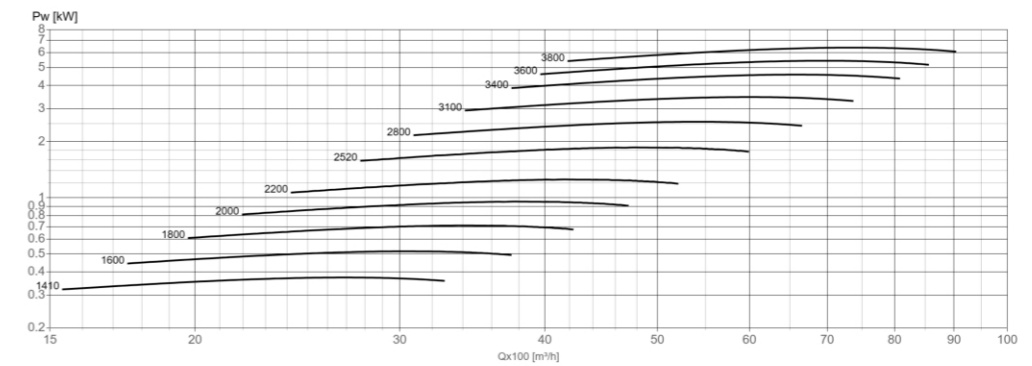
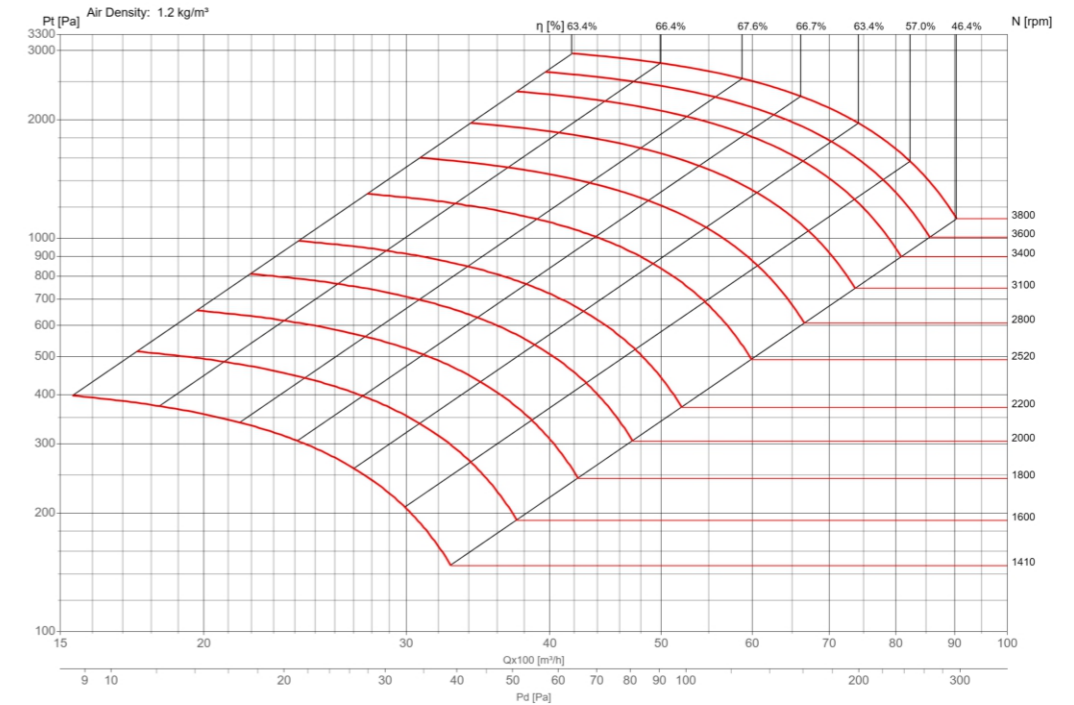
BAS Series

BAS315



Performance certified is for installation type B-Free inlet, Ducted outlet.
Performance ratings do not include the effects of appurtenances (accessories)
Power rating kW does not include transmission losses.
The A-weighted sound ratings shown have been calculated per AMCA international Standard 301.
Values shown are for inlet LwiA sound power levels for Installation type B:free inlet, ducted outlet.

BAS355

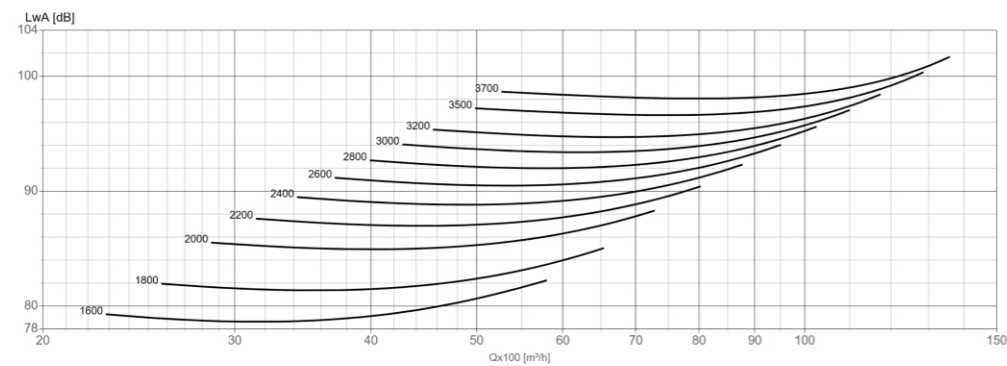
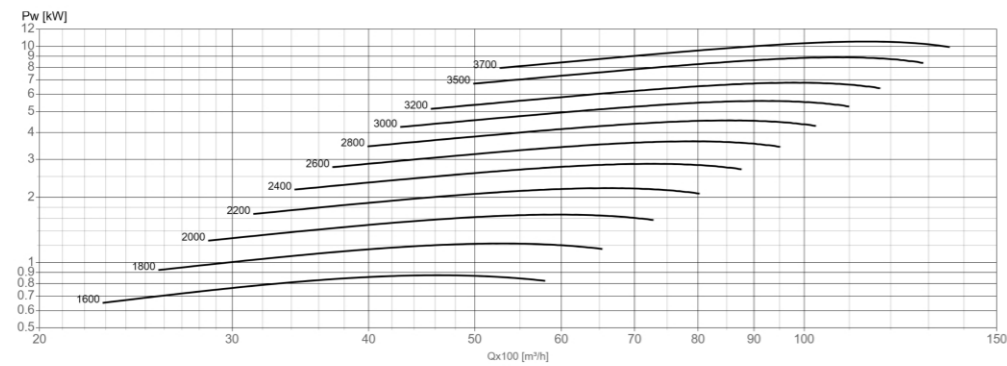
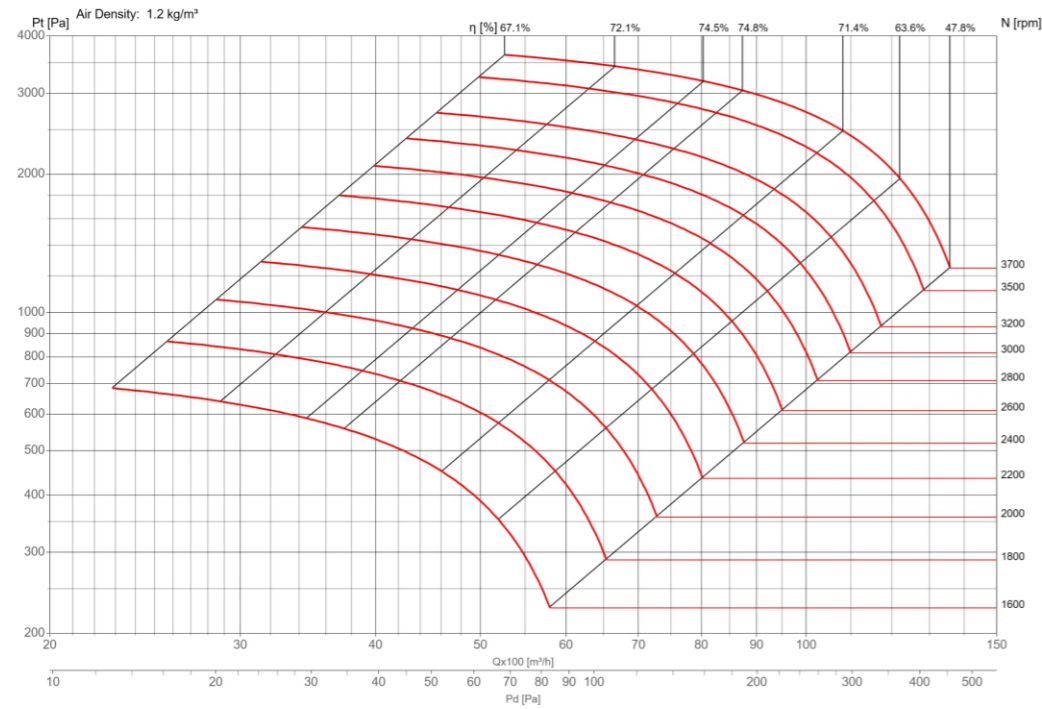


Performance certified is for installation type B-Free inlet, Ducted outlet.
Performance ratings do not include the effects of appurtenances (accessories)
Power rating kW does not include transmission losses.
The A-weighted sound ratings shown have been calculated per AMCA international Standard 301.
Values shown are for inlet LwiA sound power levels for Installation type B:free inlet, ducted outlet.

BAS Series

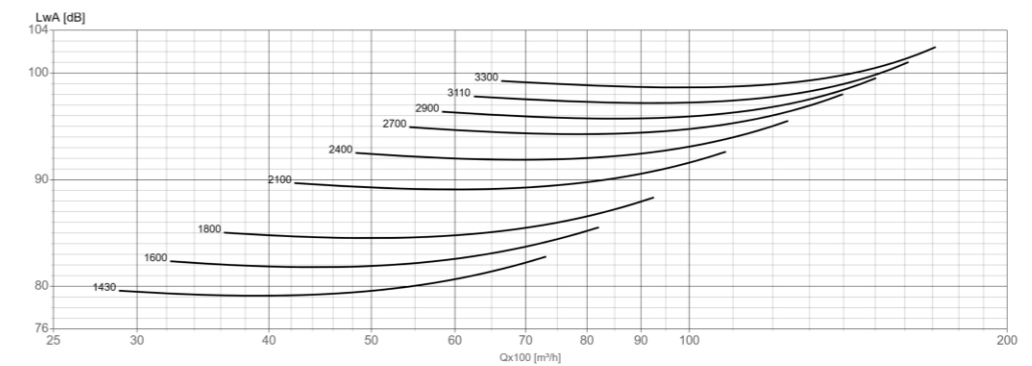
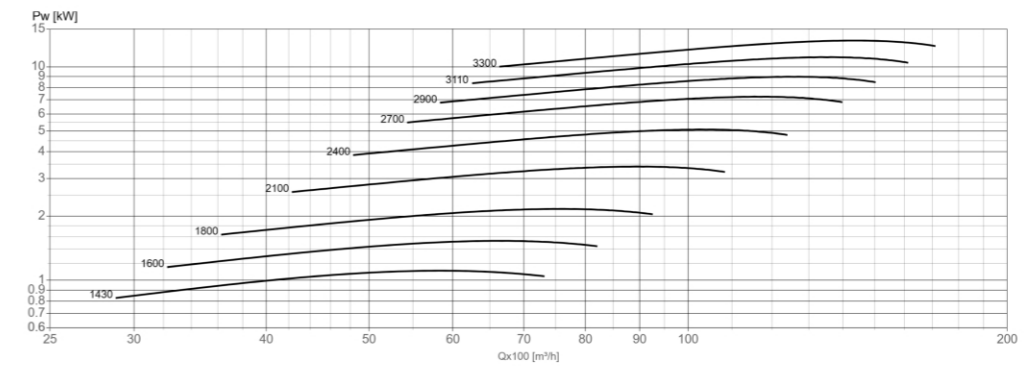
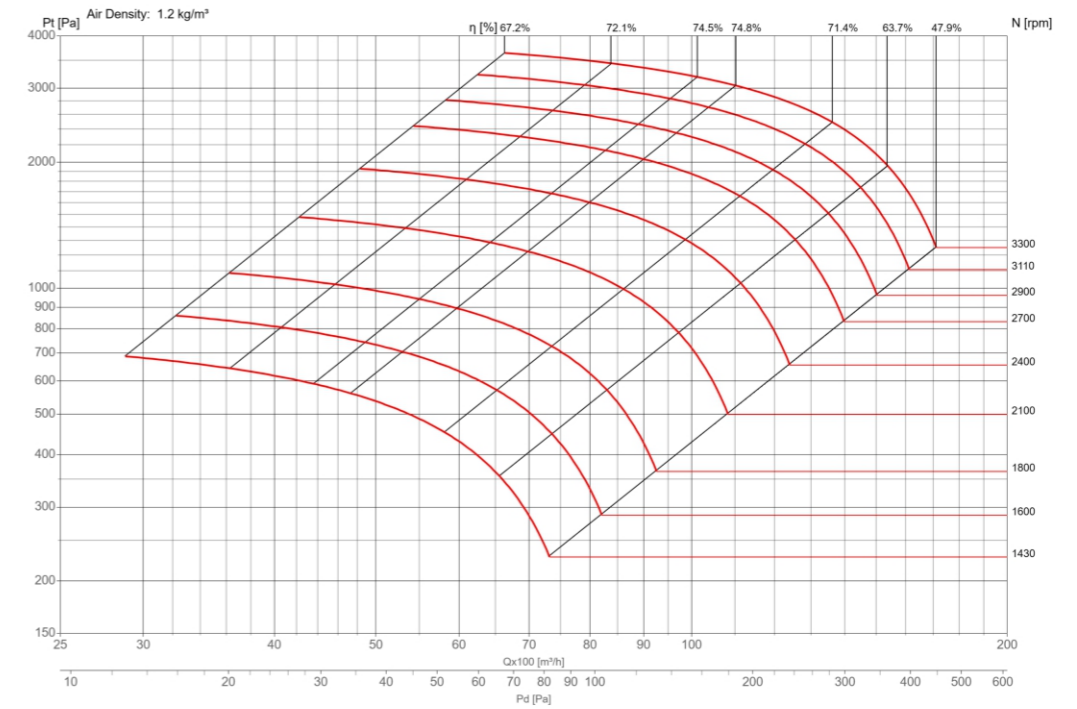
BAS Series

BAS400



Performance certified is for installation type B-Free inlet, Ducted outlet.
Performance ratings do not include the effects of appurtenances (accessories)
Power rating kW does not include transmission losses.
The A-weighted sound ratings shown have been calculated per AMCA international Standard 301.
Values shown are for inlet LwiA sound power levels for Installation type B:free inlet, ducted outlet.

BAS450



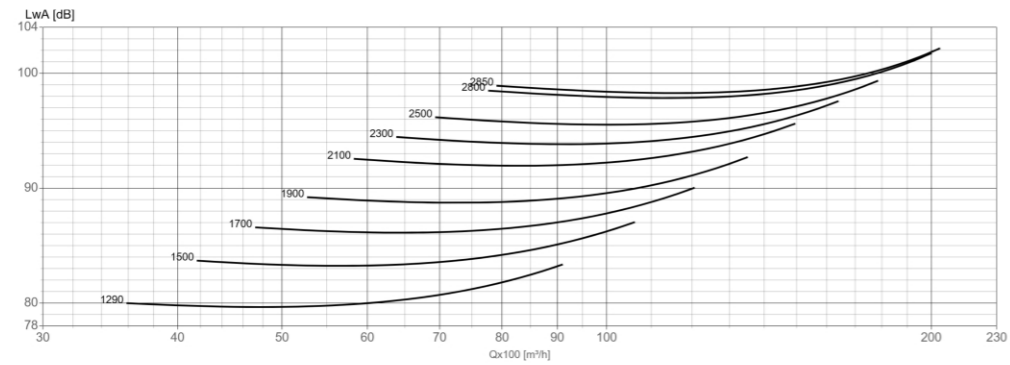
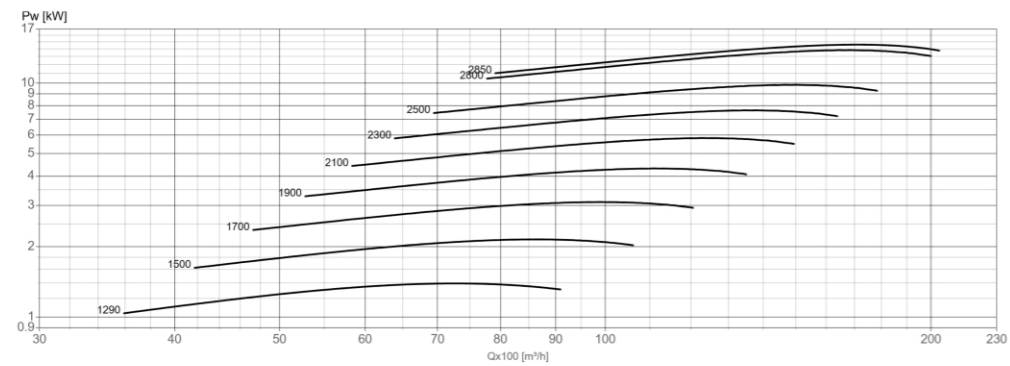
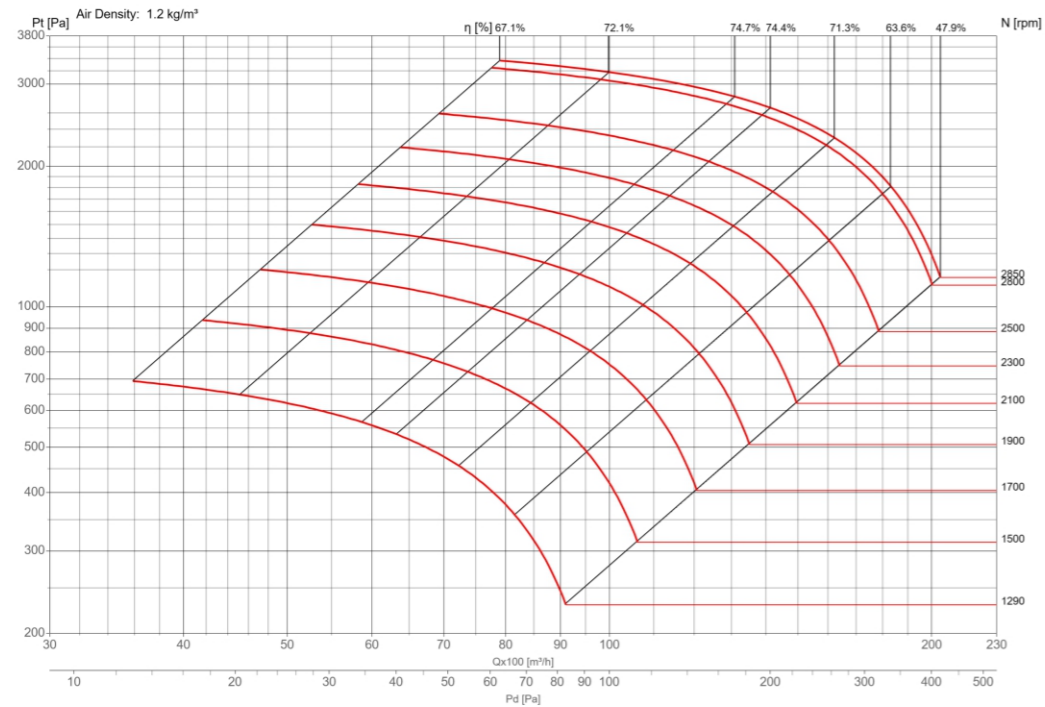
Performance certified is for installation type B-Free inlet, Ducted outlet.
Performance ratings do not include the effects of appurtenances (accessories)
Power rating kW does not include transmission losses.
The A-weighted sound ratings shown have been calculated per AMCA international Standard 301.
Values shown are for inlet LwiA sound power levels for Installation type B:free inlet, ducted outlet.

BAS Series

BAS Series

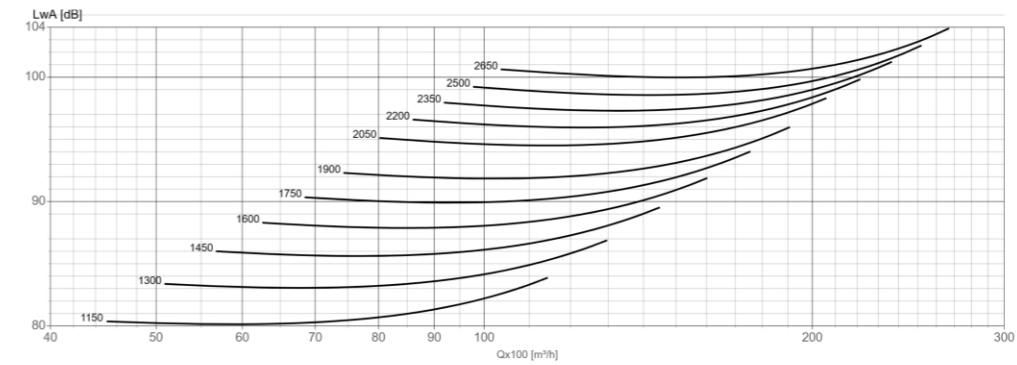
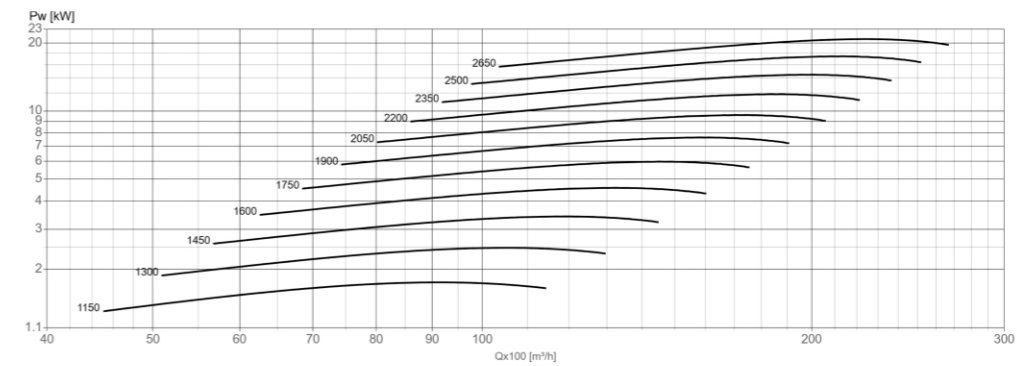
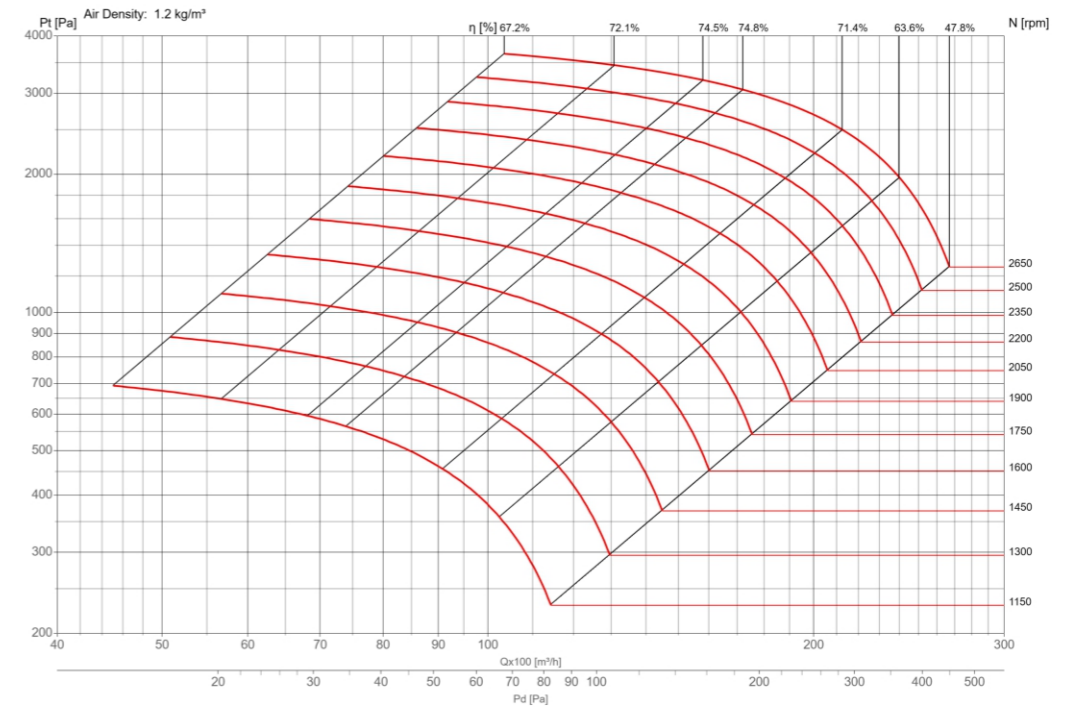
BAS Series

BAS500



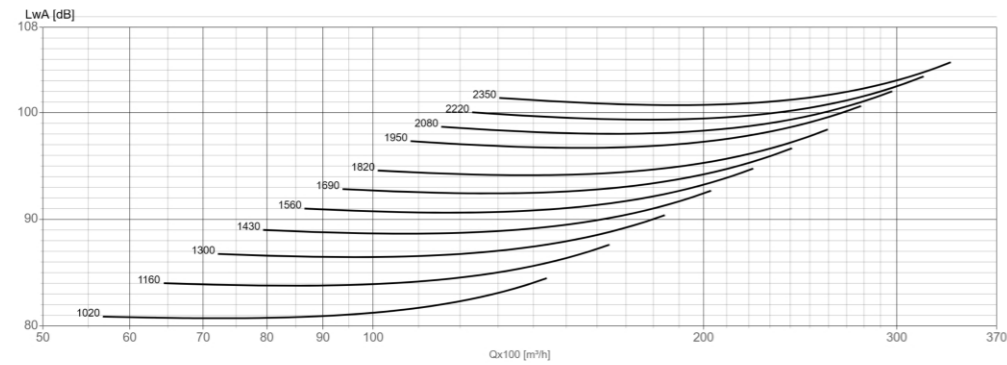
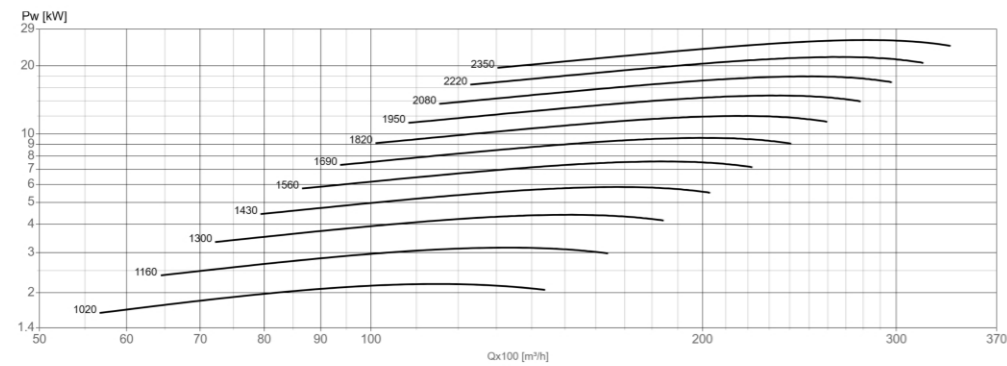
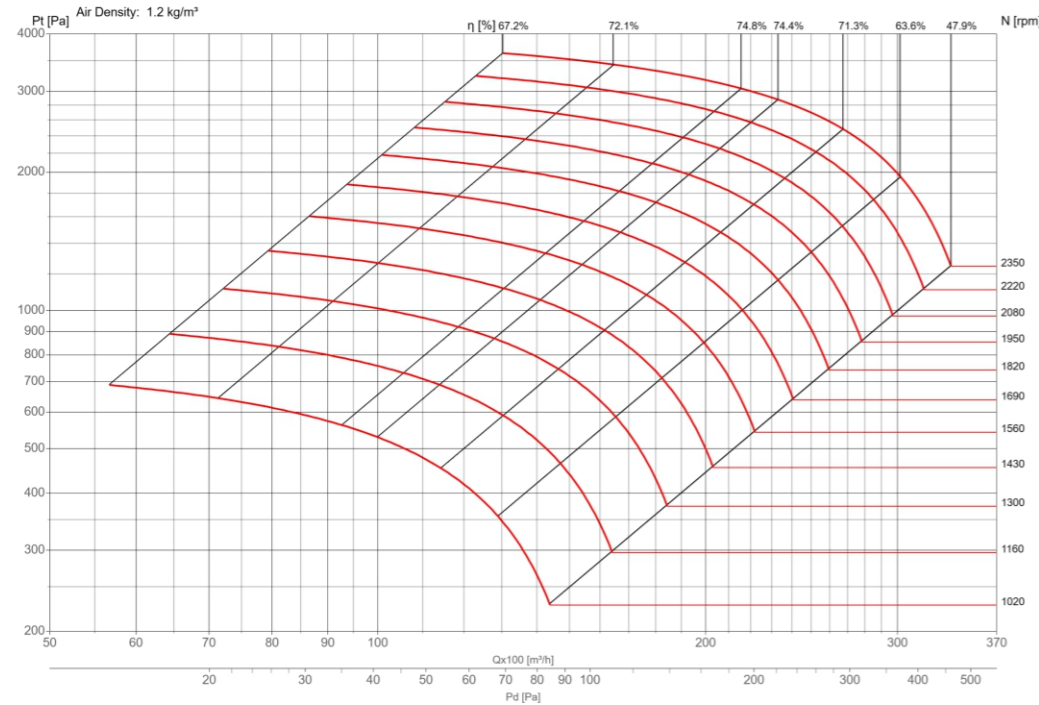
Performance certified is for installation type B-Free inlet, Ducted outlet.
Performance ratings do not include the effects of appurtenances (accessories)
Power rating kW does not include transmission losses.
The A-weighted sound ratings shown have been calculated per AMCA international Standard 301.
Values shown are for inlet LwiA sound power levels for Installation type B:free inlet, ducted outlet.

BAS560



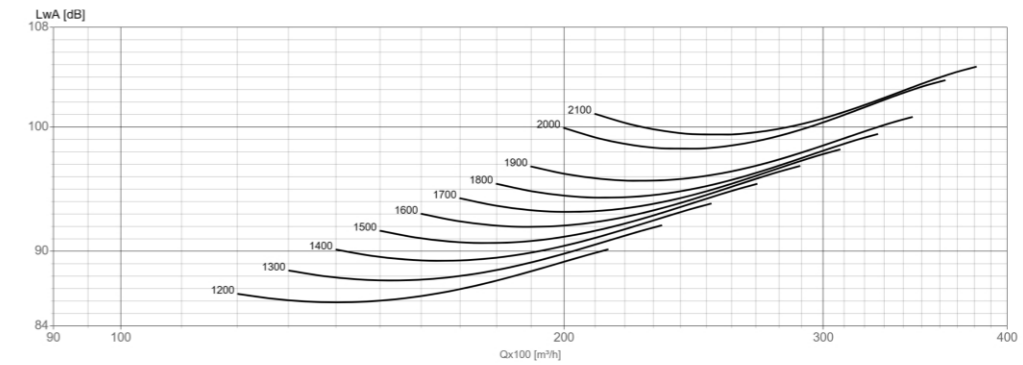
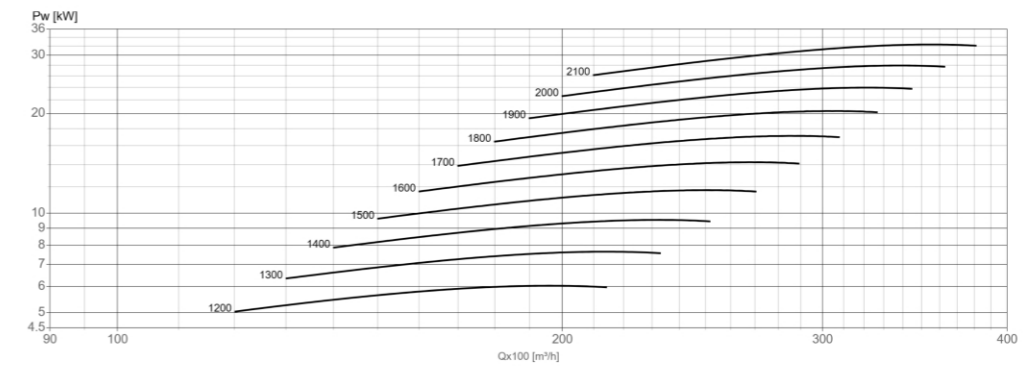
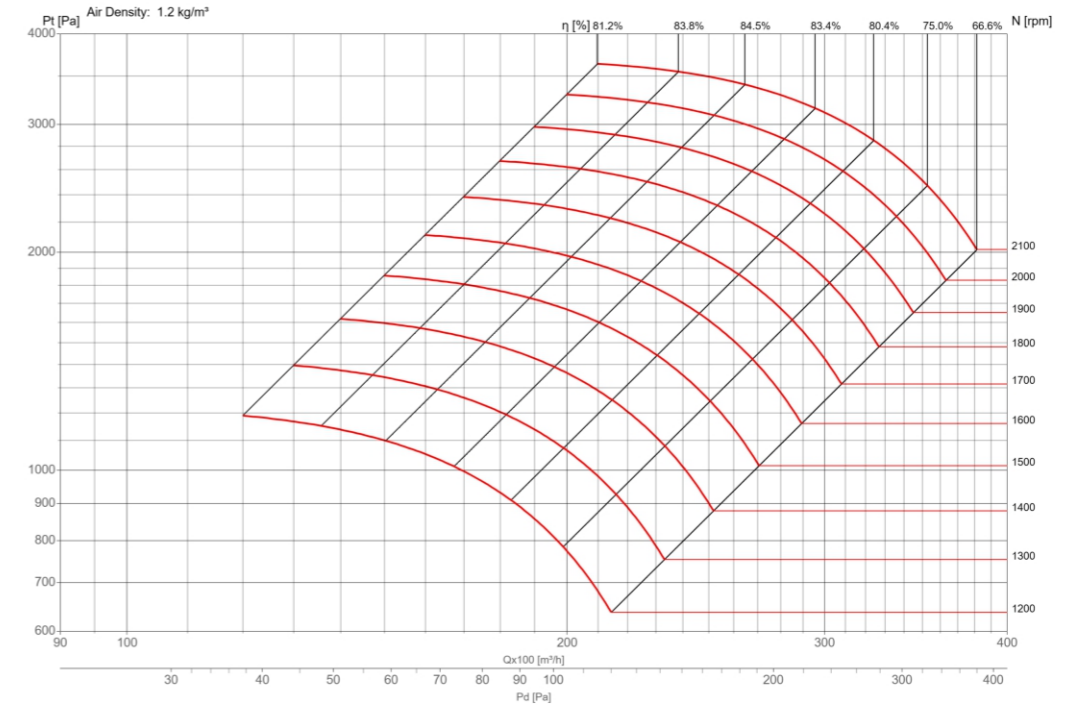
Performance certified is for installation type B-Free inlet, Ducted outlet.
Performance ratings do not include the effects of appurtenances (accessories)
Power rating kW does not include transmission losses.
The A-weighted sound ratings shown have been calculated per AMCA international Standard 301.
Values shown are for inlet LwiA sound power levels for Installation type B:free inlet, ducted outlet.

BAS630



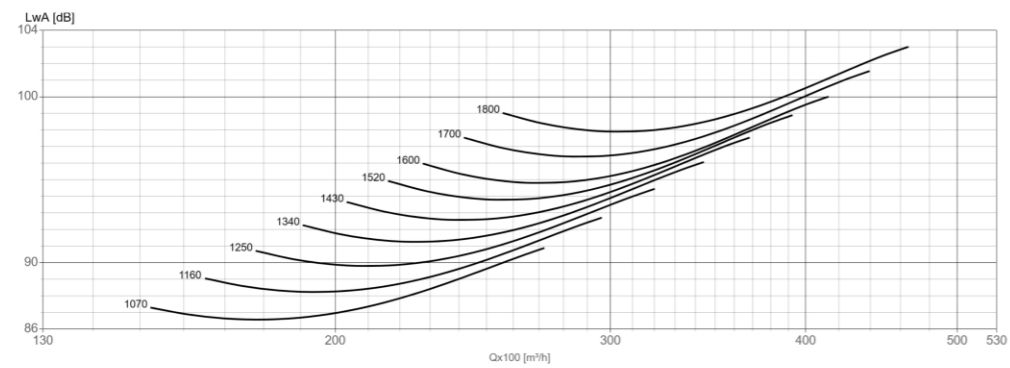
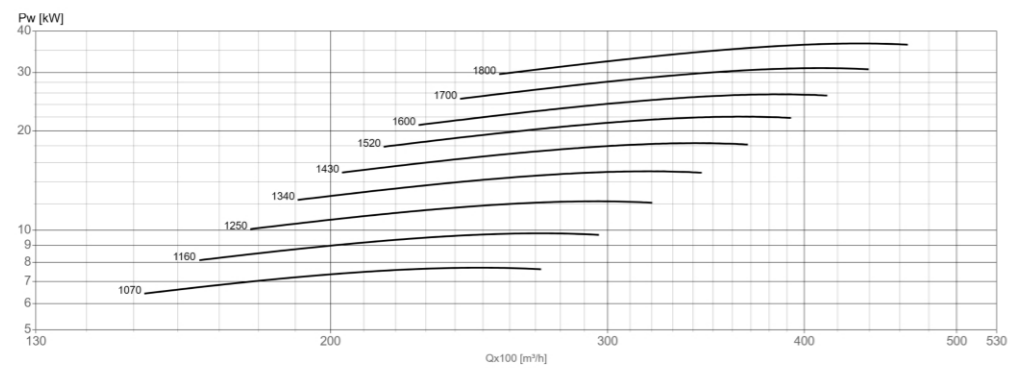
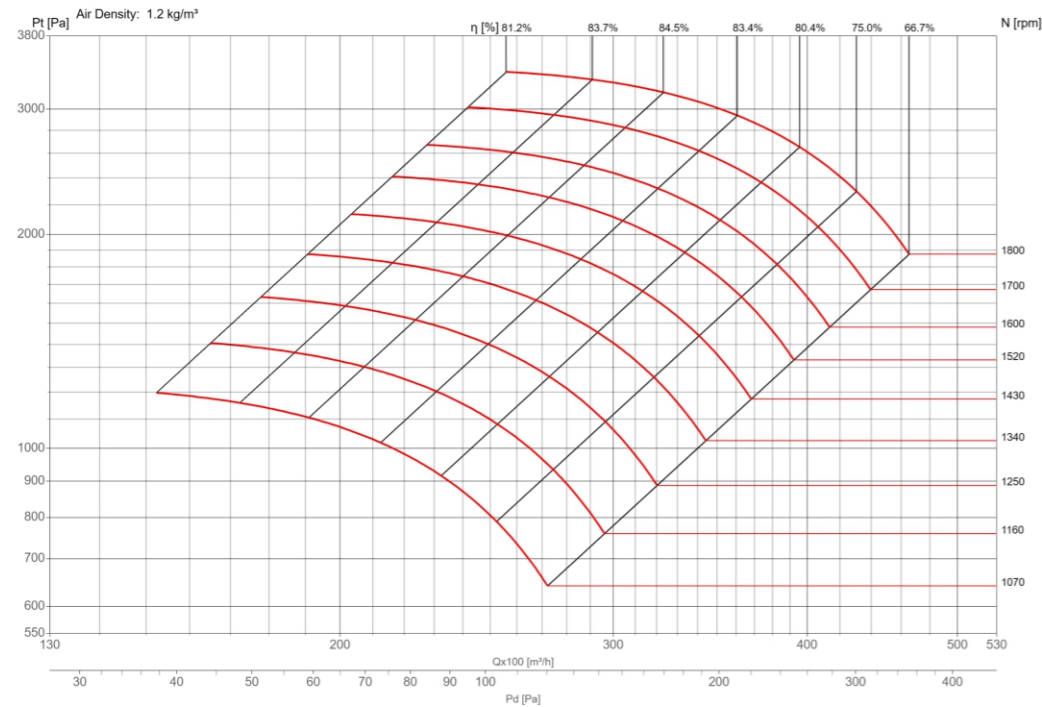
Performance certified is for installation type B-Free inlet, Ducted outlet.
Performance ratings do not include the effects of appurtenances (accessories)
Power rating kW does not include transmission losses.
The A-weighted sound ratings shown have been calculated per AMCA international Standard 301.
Values shown are for inlet LwiA sound power levels for Installation type B:free inlet, ducted outlet.

BAS710



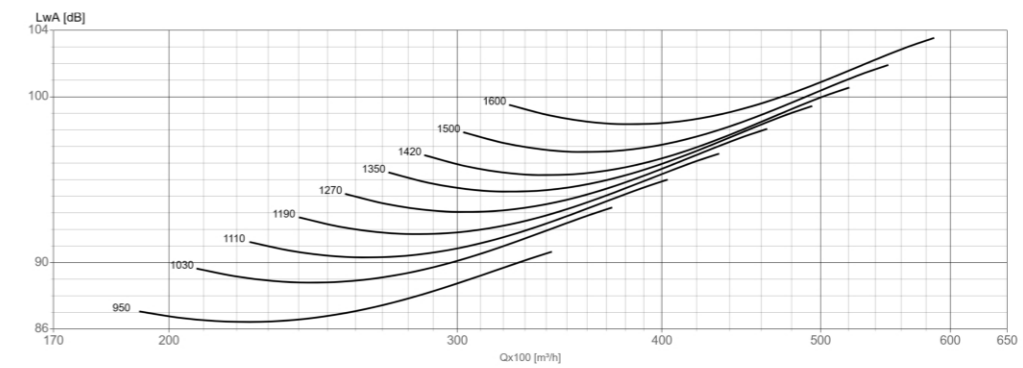
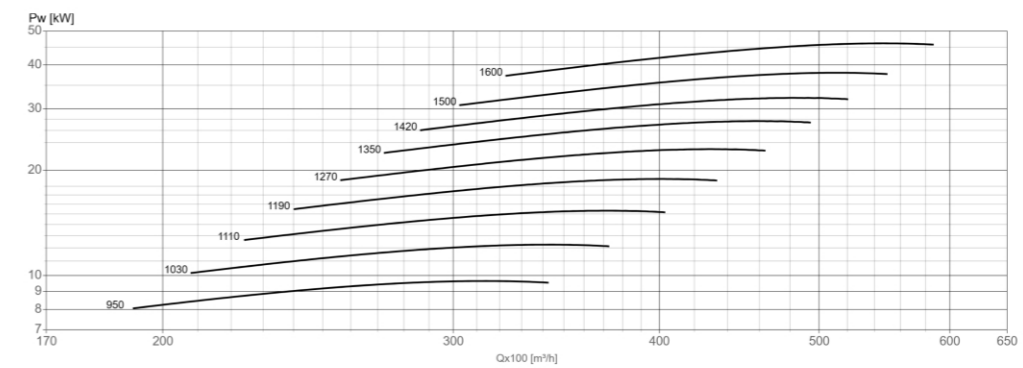
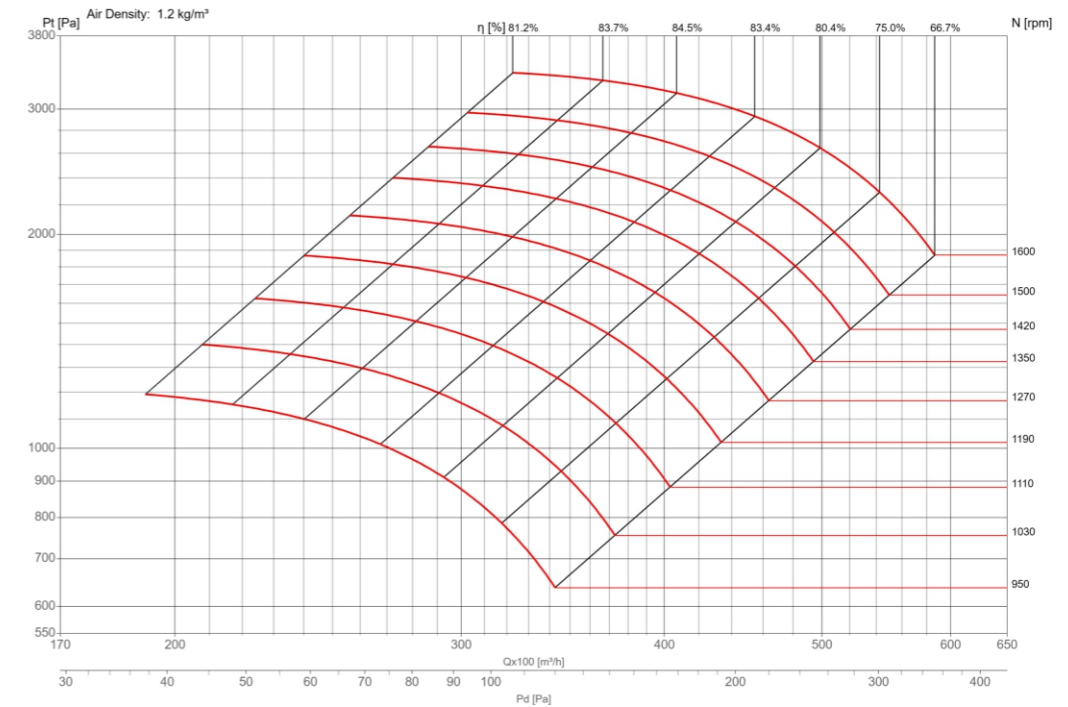
Performance certified is for installation type B-Free inlet, Ducted outlet.
Performance ratings do not include the effects of appurtenances (accessories)
Power rating kW does not include transmission losses.
The A-weighted sound ratings shown have been calculated per AMCA international Standard 301.
Values shown are for inlet LwiA sound power levels for Installation type B:free inlet, ducted outlet.

BAS800



Performance certified is for installation type B-Free inlet, Ducted outlet.
Performance ratings do not include the effects of appurtenances (accessories)
Power rating kW does not include transmission losses.
The A-weighted sound ratings shown have been calculated per AMCA international Standard 301.
Values shown are for inlet LwiA sound power levels for Installation type B:free inlet, ducted outlet.

BAS900

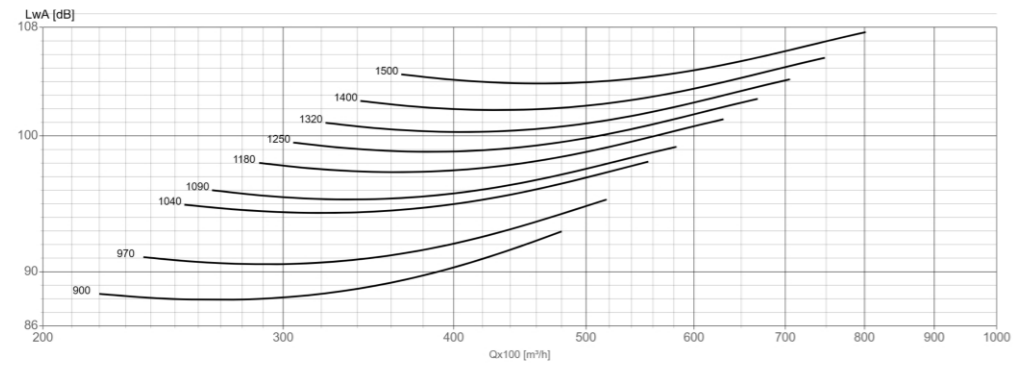
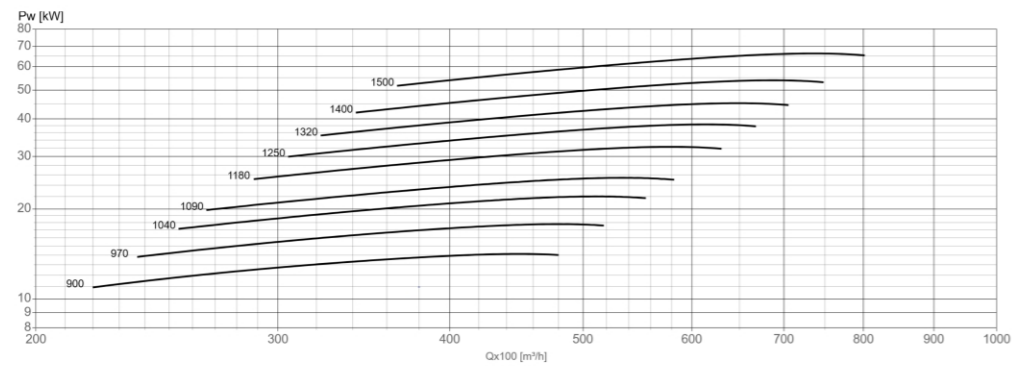
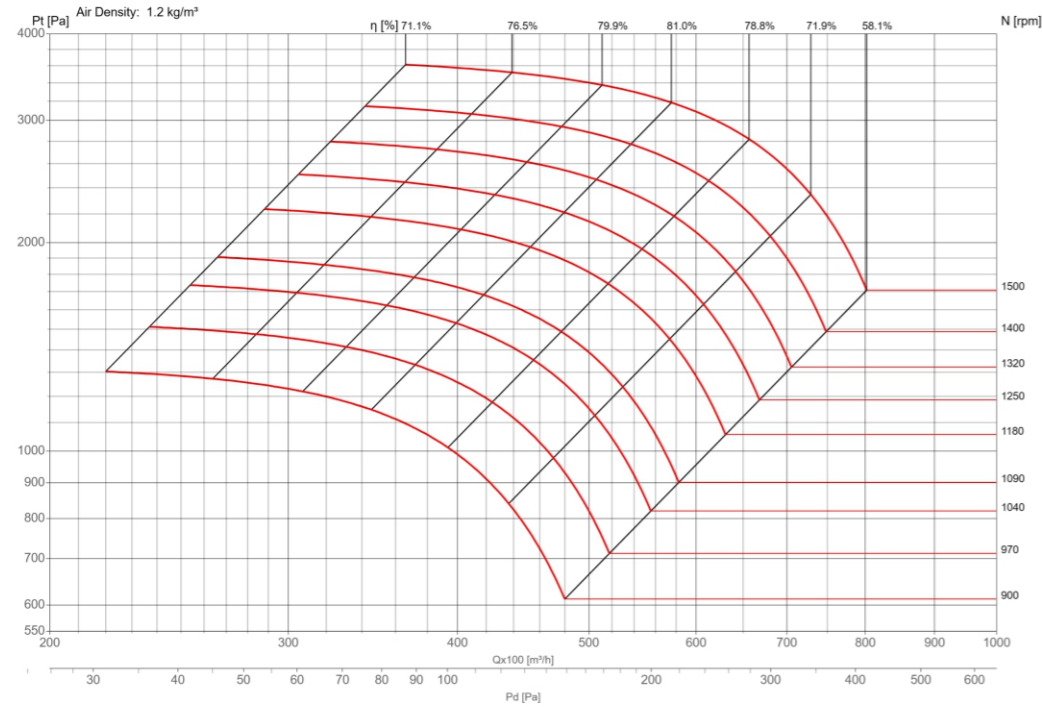


Performance certified is for installation type B-Free inlet, Ducted outlet.
Performance ratings do not include the effects of appurtenances (accessories)
Power rating kW does not include transmission losses.
The A-weighted sound ratings shown have been calculated per AMCA international Standard 301.
Values shown are for inlet LwiA sound power levels for Installation type B:free inlet, ducted outlet.

BAS Series

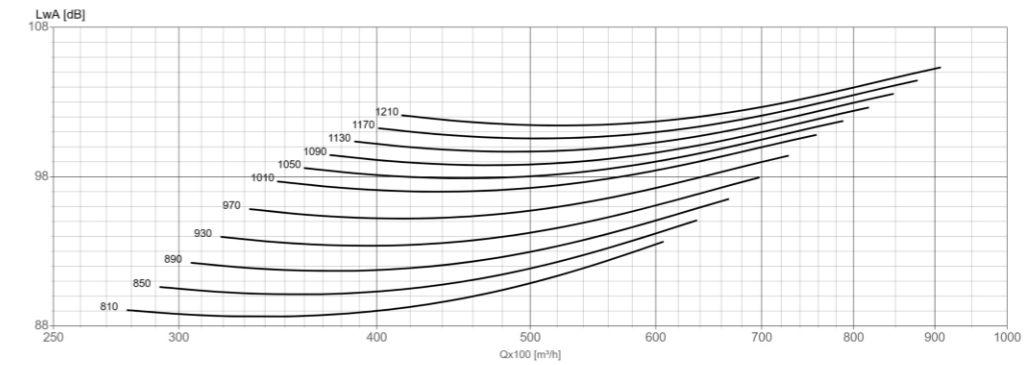
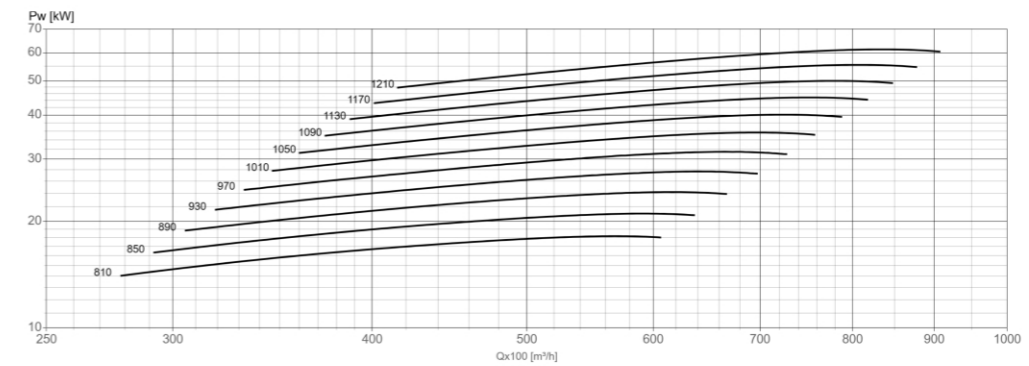
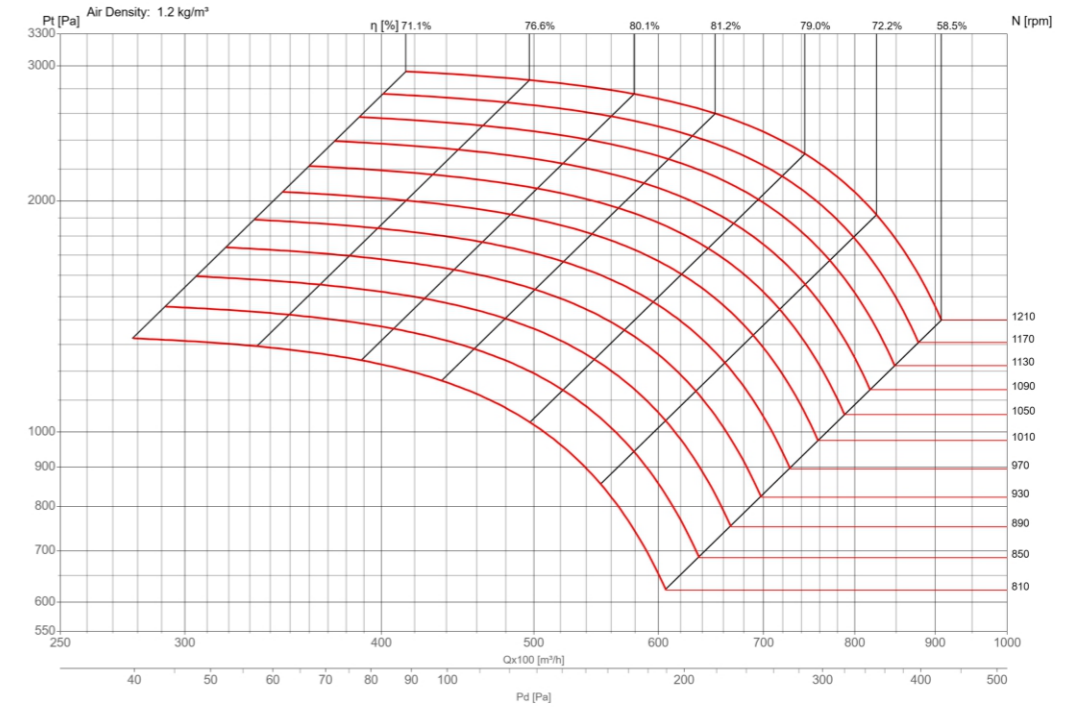
BAS Series

BAS1000



Performance certified is for installation type B-Free inlet, Ducted outlet.
Performance ratings do not include the effects of appurtenances (accessories)
Power rating kW does not include transmission losses.
The A-weighted sound ratings shown have been calculated per AMCA international Standard 301.
Values shown are for inlet LwiA sound power levels for Installation type B:free inlet, ducted outlet.

BAS1120

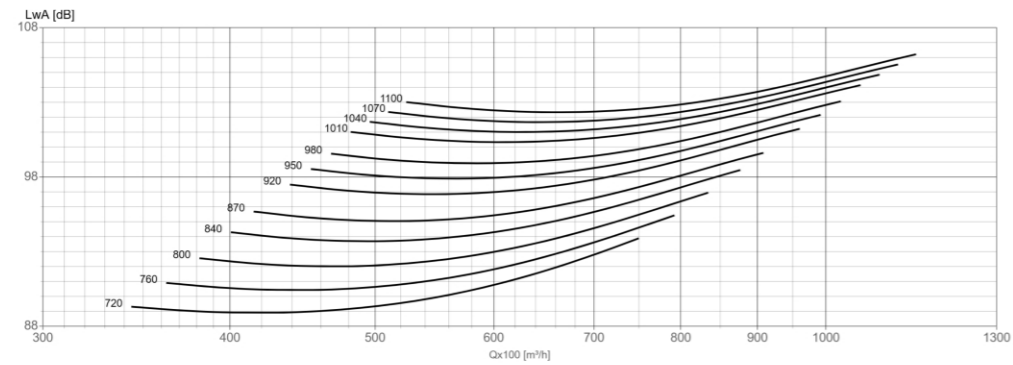
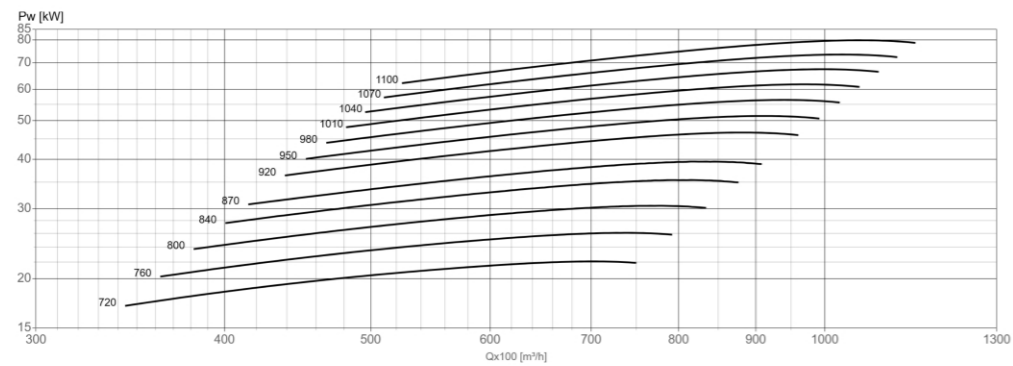
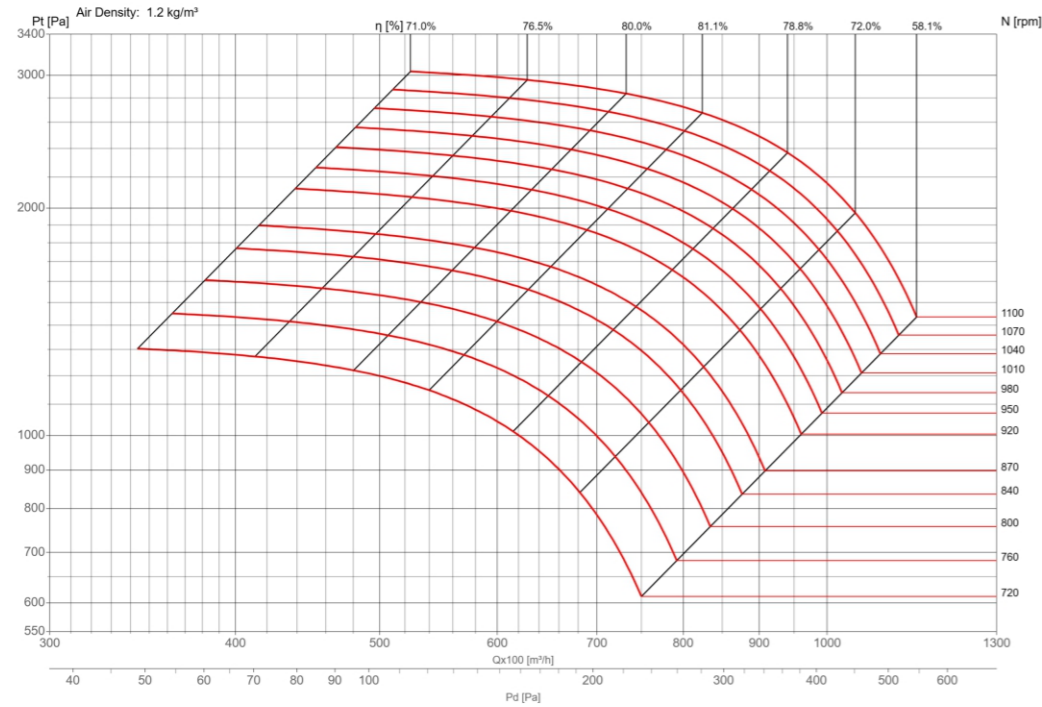


Performance certified is for installation type B-Free inlet, Ducted outlet.
Performance ratings do not include the effects of appurtenances (accessories)
Power rating kW does not include transmission losses.
The A-weighted sound ratings shown have been calculated per AMCA international Standard 301.
Values shown are for inlet LwiA sound power levels for Installation type B:free inlet, ducted outlet.

BAS Series

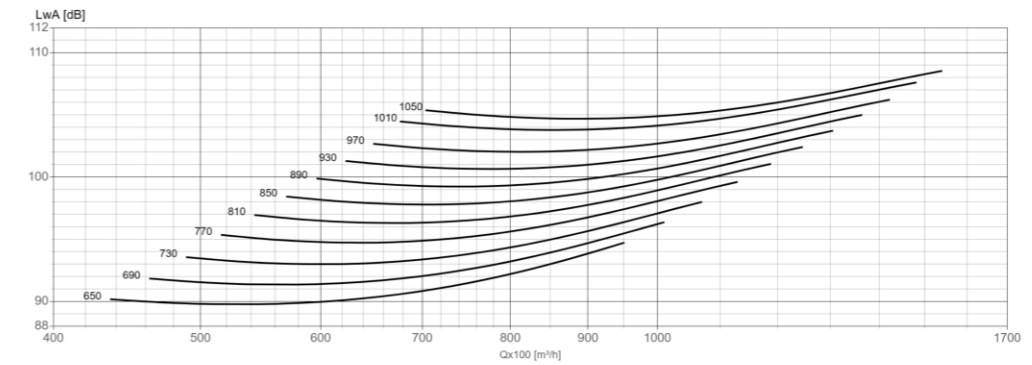
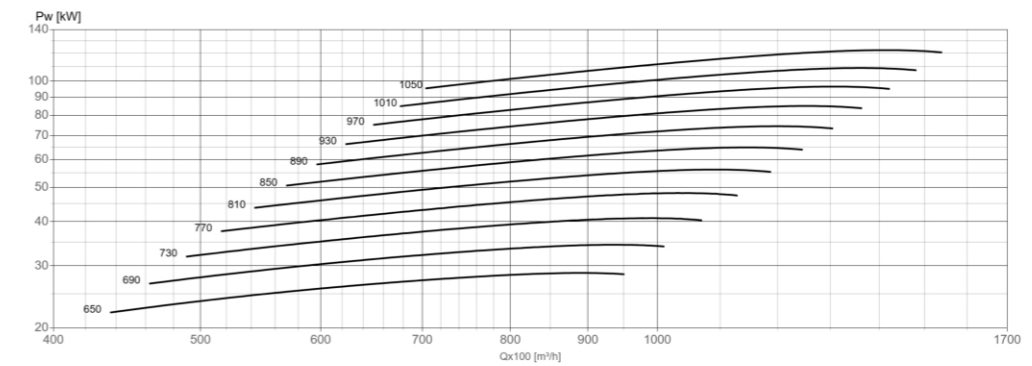
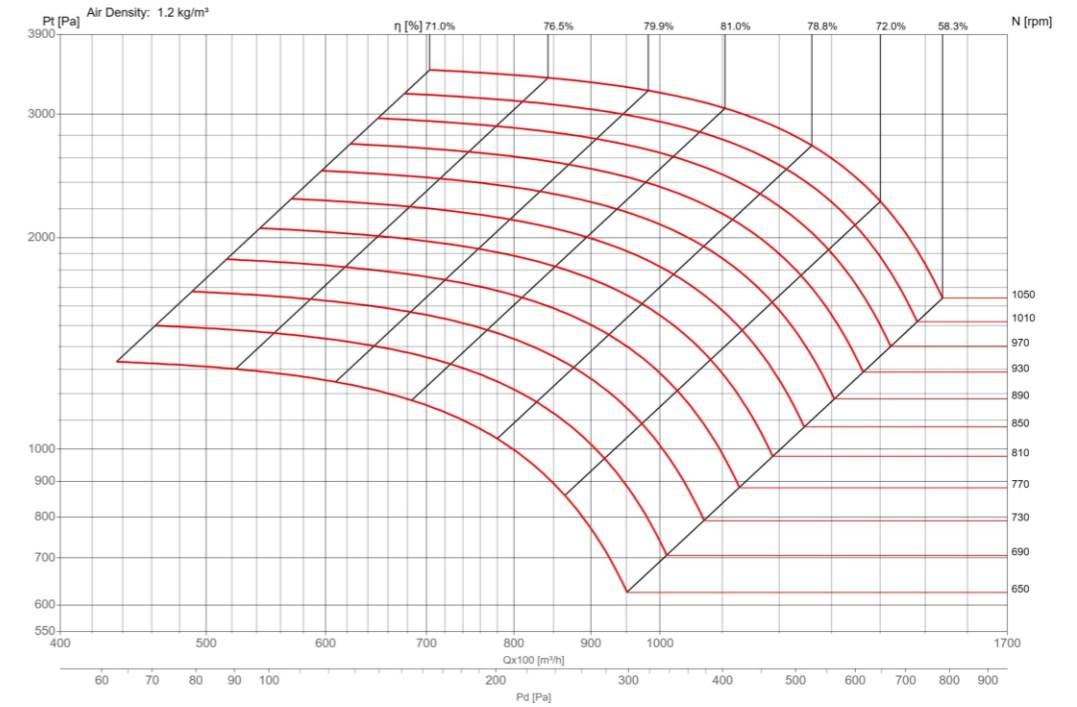
BAS Series

BAS1250



Performance certified is for installation type B-Free inlet, Ducted outlet.
Performance ratings do not include the effects of appurtenances (accessories)
Power rating kW does not include transmission losses.
The A-weighted sound ratings shown have been calculated per AMCA international Standard 301.
Values shown are for inlet LwiA sound power levels for Installation type B:free inlet, ducted outlet.

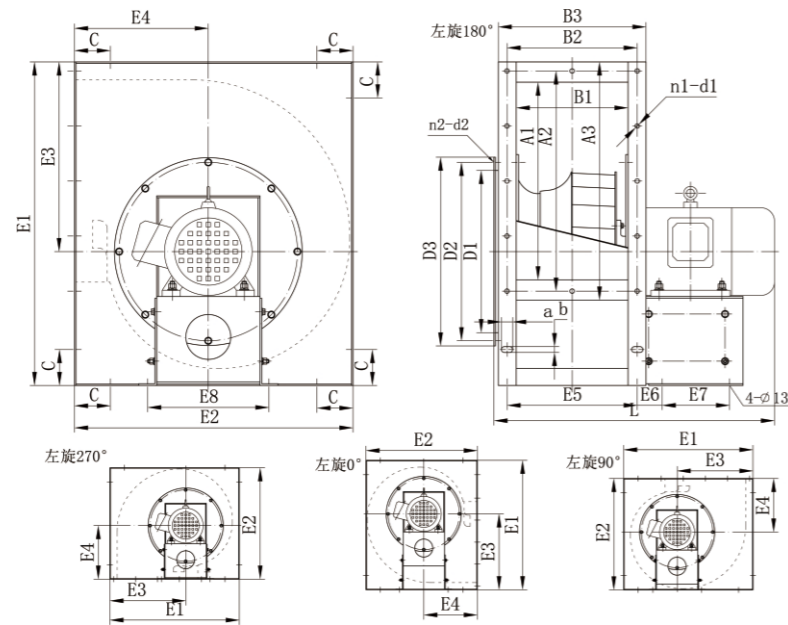
BAS1400



Performance certified is for installation type B-Free inlet, Ducted outlet.
Performance ratings do not include the effects of appurtenances (accessories)
Power rating kW does not include transmission losses.
The A-weighted sound ratings shown have been calculated per AMCA international Standard 301.
Values shown are for inlet LwiA sound power levels for Installation type B:free inlet, ducted outlet.

3.0 风机安装尺寸 Installation Dimensions

3.1 MK-方式直联结构尺寸 MK-Cube direct driving installation dimension



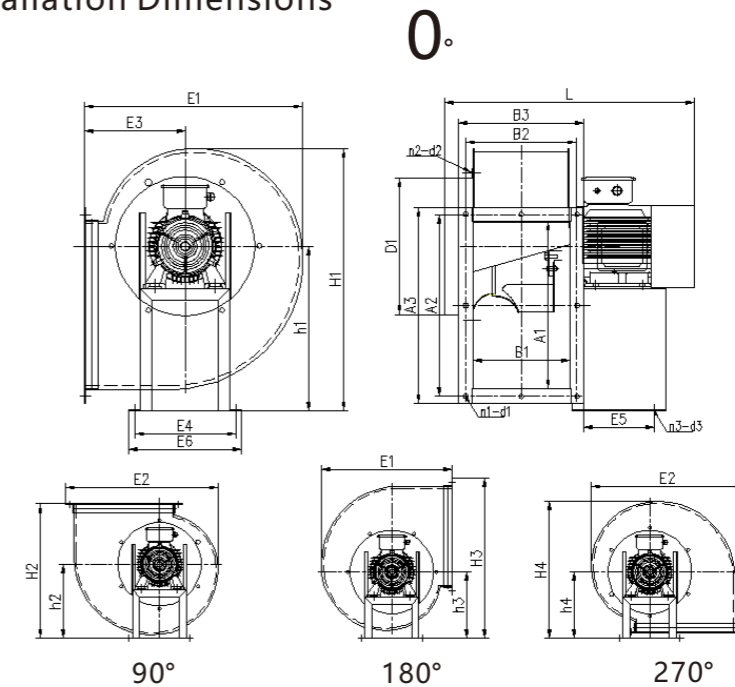
型号	Inlet Dimensions [mm]						Outlet Dimensions [mm]								
Model	D1	D2	D3	N2	D2	A1	A2	A3	B1	B2	B3	N1	D1	D1	
250	265	284	308	6	8	316	3×115	375	188	2×116.5	248	10	8	8	
280	296	317	343	6	8	345	3×125	405	203	2×124	263	10	8	8	
315	332	355	385	6	10	395	4×106.3	455	228	2×136.5	288	12	8	8	
355	359	395	425	8	10	446	4×122.5	530	249	2×145	329	12	10	10	
400	410	440	470	8	12	496	5×108	580	279	3×107	359	16	10	10	
450	459	490	520	8	12	561	5×121	645	309	3×188.3	389	16	10	10	
500	510	540	565	8	15	631	5×135	715	349	3×130	429	16	10	10	
560	573	610	640	8	15	705	6×125	800	384	4×107.5	474	20	10	10	
630	643	680	710	8	15	790	6×140	885	434	4×120	524	20	10	10	
710	718	710	795	8	15	885	6×155	978	490	4×134.5	580	20	10	10	

型号	配套电机	E1	E2	E3	E4	E5	E6	E7	E8	**L	C	a	b
Model	Motor												
250	0.55-2	515	430	298	205	233	50	110	240	474	60	13	25
280	1.1-2	565	470	330	218	248	50	110	250	590	60	13	25
315	0.55-4	635	530	368	246	273	50	110	240	514	60	13	25
	2.2-2							130	280	560			
355	0.55-4	720	620	422	298	290	55.5	100	240	555	80	13	25
	3-2							150	270	630			
400	0.75-4	810	700	471	339	321	55	110	250	600	120	13	25
	5.5-2							180	320	735			
450	1.5-4	900	780	525	375	355	53	130	260	660	120	13	25
	11-2							280	400	860			
500	2.2-4	990	860	577	413	390	55.5	150	280	735	150	13	25
	15-2							310	400	950			
560	1.1-6	1070	930	647	423	430	58	155	280	775	150	13	25
	4-4							195	350	850			
630	2.2-6	1200	1050	722.5	477.5	480	58	220	370	895	150	13	25
	7.5-4							220	370	935			
710	3-6	1350	1190	808	542	538	58	225	370	995	150	13	25
	11-4							295	400	1050			

** 不同品牌的电机长度不同 Different motor band the dimension 'L' is different
未列表型号请咨询我司工作人员 Please consult us when referred to unlisted models

3.2 DK-风机安装尺寸

3.2 DK -Installation Dimensions



进出风口尺寸
Inlet and outlet dimensions

Model	出风口尺寸							进风口尺寸	
	A1	A2	A3	B1	B2	B3	n1-d1	D1	n2-d2
250	318	352	382	180	216	246	12-φ9	φ249	6-φ9
280	356	388	420	200	230	260	12-φ9	φ290	6-φ12
315	400	430	460	234	264	294	14-φ9	φ324	
355	446	490	531	249	290	329	12-φ12	φ366	8-φ12
400	497	541	582	275	316	355	12-φ12	φ414	
450	557	601	642	305	346	410	12-φ12	φ461	

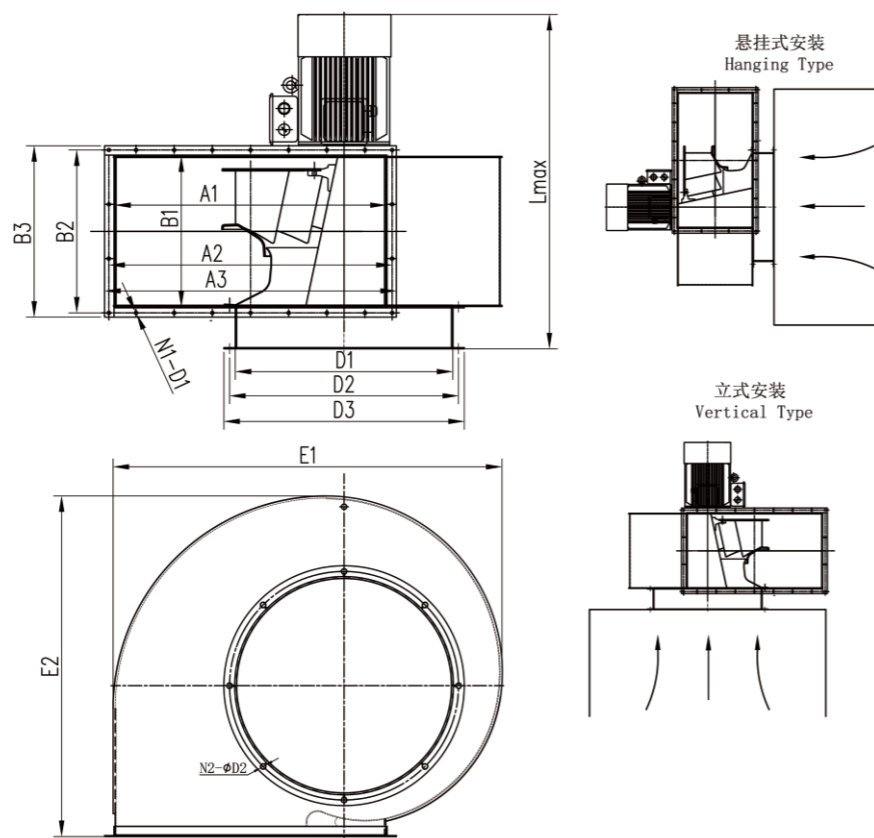
外形安装尺寸
Installation dimensions

Model	电机机座号	外形安装尺寸																
		L max	H1	H2	H3	H4	h1	h2	h3	h4	E1	E2	E3	E4	E5	E5 (270)	E6	n3-d3
250	80M/90S/90L	535	510	436	534	460	316	236	236	236	423	488	194	215	150	120	240	4-φ10
280	80M/90S/90L/100L	613	565	483	589	507	349	263	258	256	470	542	214	255	230	200	280	4-φ10
315	80M/90S/90L/100L	649	629	536	652	560	388	294	283	278	523	606	236	255	230	200	280	4-φ10
355	80M/90S/90L/100L	673	702	607	724	633	431	330	313	313	594	678	271	255	230	200	280	4-φ10
400	80M/90S/90L/100L 112M/132S	739	782	665	806	690	479	369	345	332	654	760	290	330	230	200	355	4-φ10
450	80M/90S/90L/100L 112M/132S/132M	785	874	742	898	766	533	414	383	364	731	852	322	330	230	200	355	4-φ10

** 不同品牌的电机长度不同 "Lmax" 不同 Different motor band the dimension 'Lmax' is different
未列表型号请咨询我司工作人员 Please consult us when referred to unlisted models

3.3 RMF-悬挂式/立式结构

3.3 RMF- hanging installation/Vertical installation

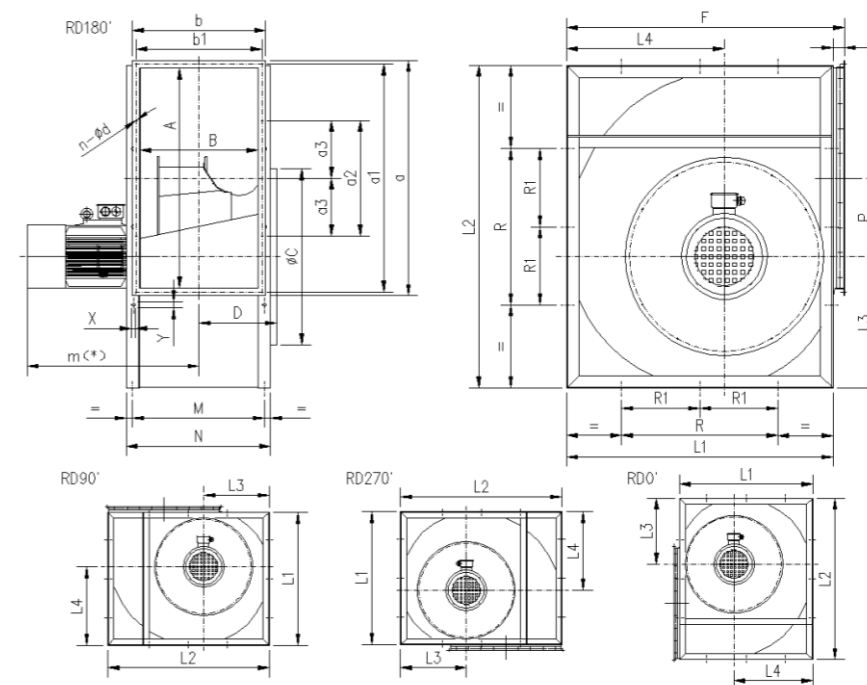


型号	电机	Inlet Dimensions [mm]						Outlet Dimensions [mm]							
Model	Motor	Lmax	D2	D3	N2	D2	A1	A2	A3	B1	B2	B3	N1	D1	D1
250	0.75-2	496	284	308	6	8	316	3×115	376	188	2×116.5	248	10	8	8
280	1.1-2	511	317	343	6	8	345	3×125	405	203	2×124	263	10	8	8
315	2.2-2	589	355	385	6	10	395	4×106.3	455	228	2×136.5	288	12	8	8
355	3-2	650	395	425	8	10	446	4×122.5	516	249	2×145	319	12	10	10
400	5.5-2	749	440	470	8	12	496	5×108	566	279	3×107	349	16	10	10
450	1.5-4	695	490	520	8	12	561	5×121	631	309	3×188.3	379	16	10	10
500	2.2-4	769	540	565	8	15	631	5×135	701	349	3×130	419	16	10	10
560	4-4	798	610	640	8	15	705	6×125	785	384	4×107.5	464	20	10	10
630	7.5-4	959	680	710	8	15	790	6×140	870	434	4×120	514	20	10	10
710	11-4	1074	710	795	8	15	885	6×155	965	490	4×134.5	570	20	10	10

** 不同品牌的电机 'Lmax' 长度不同 Different motor band the dimension 'Lmax' is different
除图中标示出的90°、180°和270°尺寸外,其余与0°相同。
Except the size of the diagram of 90°, 180° and 270°, the rest is the same as the 0°
未列表型号请咨询我司工作人员 Please consult us when referred to unlisted models

3.4 RF 风机安装尺寸

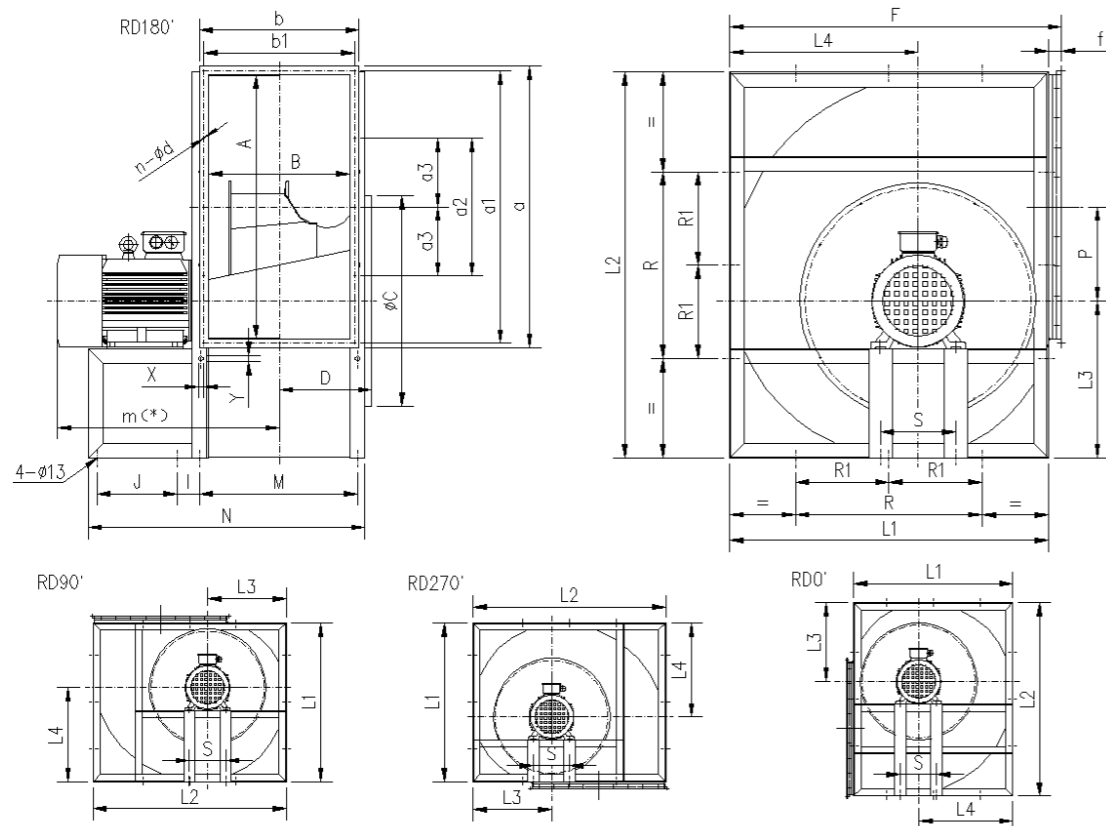
3.4 RF Installation Dimensions



Model	Motor	L1	L2	L3	L4	R	R1	F	f	N	M	*m	P
250	0.75-2	384	461	187	224	224		419	35	254	219	343	109
280	1.1-2	432	518	211	251	280		466	34	268	238	350	121.5
315	2.2-2	480	578	235	282	280		518	38	294	264	405	138
355	3-2	548	654	265	318	315		578	32	336	296	462	157
400	5.5-2	612	736	299	360	355		650	38	364	324	544	179
450	1.5-4	681	827	336	404	400		726	45	393	353	446	202
500	2.2-4	750	918	375	448	450		800	50	425	380	507	219
560	4-4	844	1030	420	502		250	892	48	487	437	530	245.5
630	7.5-4	945	1157	472	564		280	998	53	530	480	663	278
710	7.5-4	1075	1302	530	636		315	1120	45	583	533	689	317

** 不同品牌的电机长度不同 "Lmax" 不同 Different motor band the dimension 'Lmax' is different
未列表型号请咨询我司工作人员 Please consult us when referred to unlisted models

➤ 3.5 RF 风机安装尺寸
3.5 RF Installation Dimensions

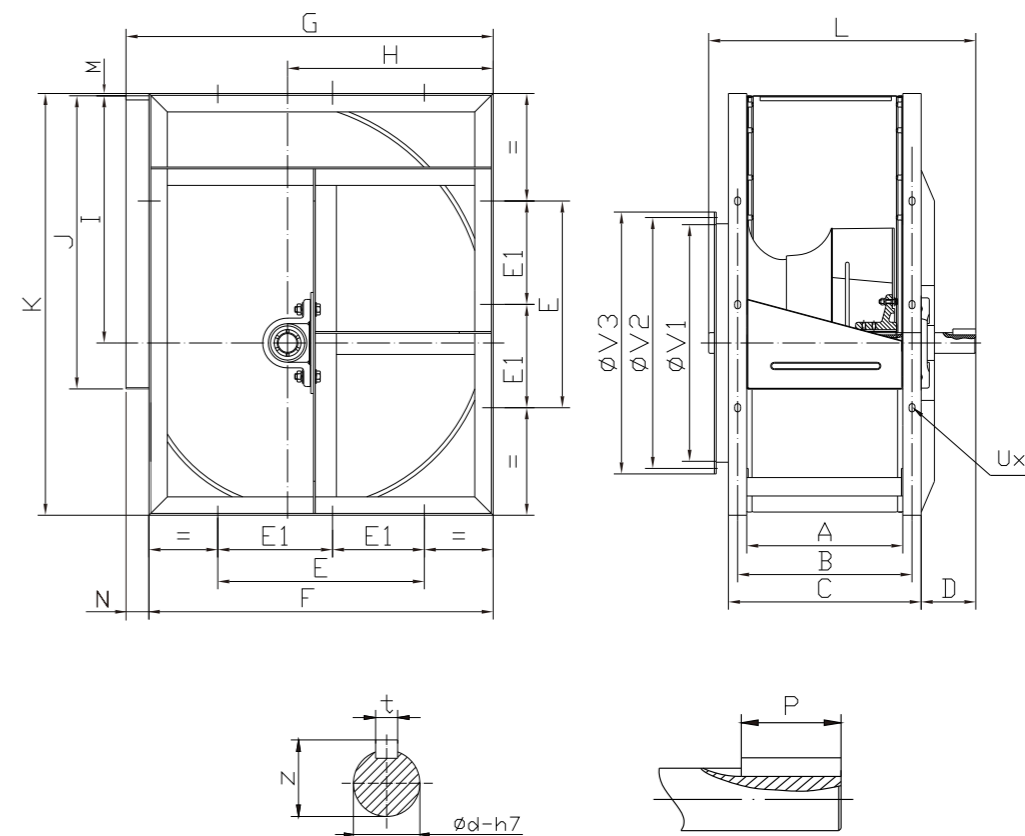


Model	Motor	L1	L2	L3	L4	R	R1	F	f	N	M	J	I	S	*m
400	160M	612	736	299	360	355	/	650	38	364	324	270	75	254	649
450	160M	681	827	336	404	400	/	726	45	393	353	270	75	254	666
500	160M	750	918	375	448	450	/	800	50	425	380	270	75	254	679
560	160L	844	1030	420	502	/	250	892	48	487	437	270	75	254	762
630	160L	945	1157	472	564	/	280	998	53	530	480	270	75	254	786
710	180M	1075	1302	530	636	/	315	1120	45	583	533	320	75	279	810

Model	A	B	C	D	a	a1	a2	a3	b	b1	P	n	d	X	Y
400	507	281	415	202	567	537	/	/	341	311	179	8	9	13	18
450	569	310	462	216.5	629	599	/	/	370	340	202	8	9	13	18
500	639	341	511	242	699	669	/	/	401	371	219	8	9	13	18
560	715	383	575	263	775	744.5	248	/	443	413	245.5	10	9	13	18
630	801	425	646	285	861	831	276	/	485	455	278	10	9	13	18
710	889	478	714	312	949	919	465	232.5	538	508	317	12	9	17	22

**不同品牌的电机长度不同 *m 不同 Different motor band the dimension *m is different
未列表型号请咨询我司工作人员 Please consult us when referred to unlisted models

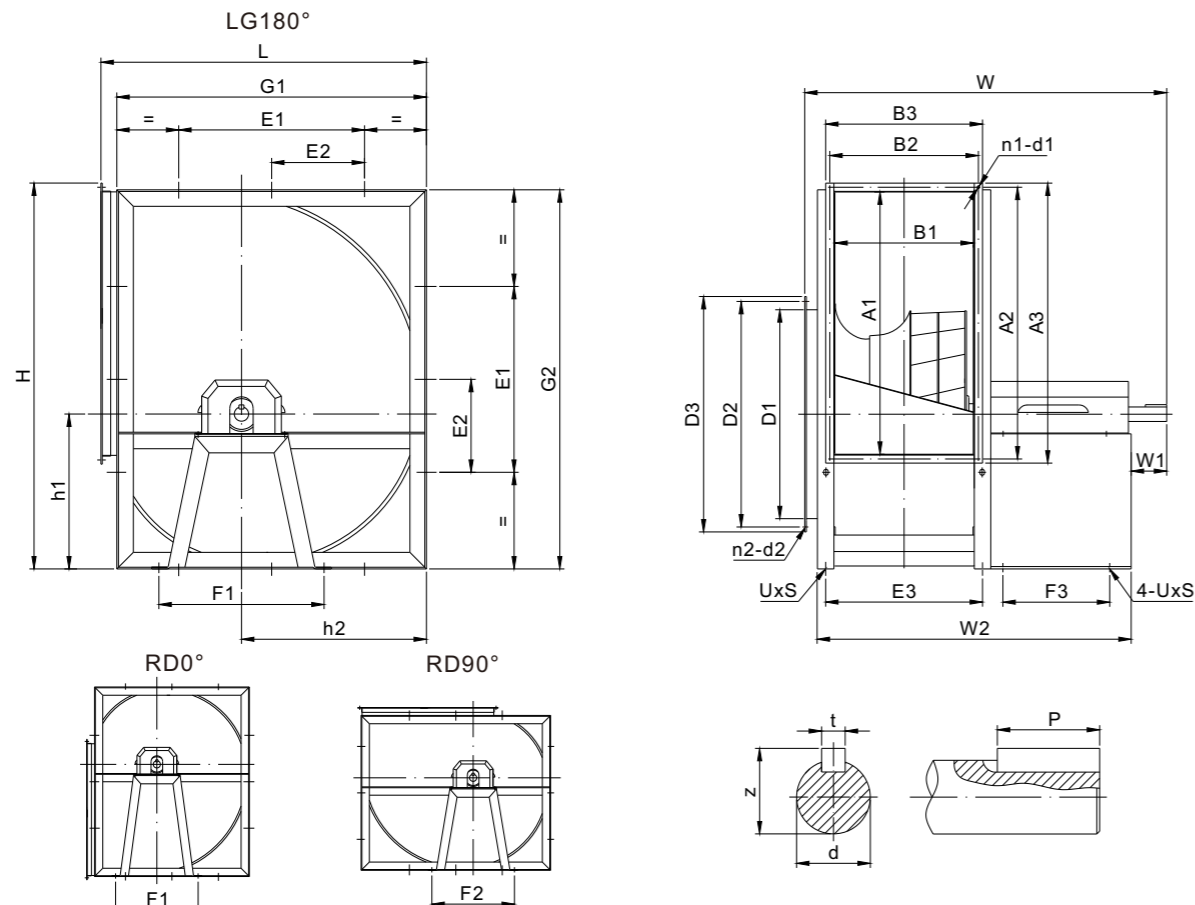
➤ 3.6 RFC1 风机安装尺寸
3.6 RFC1 Installation Dimensions



Model	A	B	C	D	E	E1	F	G	H	I	J	K	L	M	N	phi-V1	phi-V2	phi-V3	phi-d-h7	t	Z	P	UXS
250	190	215	250	79	224	/	384	419	224	270	322	461	369	4	35	250	274	290	25	8	28.3	40	11X16
280	205	235	265	77	284	/	432	466	251	302	361	518	382	5	34	286	314	332	25	8	28.3	40	11X16
315	230	260	290	80	280	/	480	518	282	340	404	578	415	3	38	320	356	380	25	8	28.3	40	13X18
355	252	292	332	93	315	/	548	578	318	383	452	654	460	6	30	362	397	420	25	8	28.3	40	13X18
400	280	320	360	93	355	/	612	650	360	432	506	736	490	5	38	410	438	464	30	8	33.3	50	13X18
450	309	344	389	11	540	/	681	726	404	486	586	827	542	5	45	457	490	520	35	10	38.3	50	13X18
500	340	380	420	119	450	/	750	800	448	538	638	918	582	5	59	506	546	570	35	10	38.3	70	13X18
560	382	432	482	133	/	250	844	892	502	603	714	103	650	7	48	570	600	636	49	14	43.3	70	13X18
630	425	475	525	133	/	280	945	998	564	679	800	1157	700	6	53	641	580	710	45	14	48.5	90	13X18
710	478	528	578	141	/	315	1075	1120	636	765	898	1302	758	7	63	709	762	800	45	14	48.5	90	17X22
800	535	585	635	141	/	355	1180	1254	714	862	1006	1468	838	7	74	801	860	900	50	14	53.5	90	17X22
900	600	650	700	158	/	400	1319	1408	804	971	1130	1648	920	7	89	906	966	1006	50	14	53.5	90	17X22
1000	673	733	799	179	/	450	1450	1540	884	1066	1266	1810	1046	9	90	1016	1074	1110	55	16	59	90	17X22

说明：所有尺寸允许偏差±4mm
Note: Overall dimension tolerance arrange ±4mm.
未列表型号请咨询我司工作人员
Please consult us when referred to unlisted models.

3.7 RFC2 风机安装尺寸(不包含底座)
3.7 RFC2 Installation Dimensions (Without basic frame)

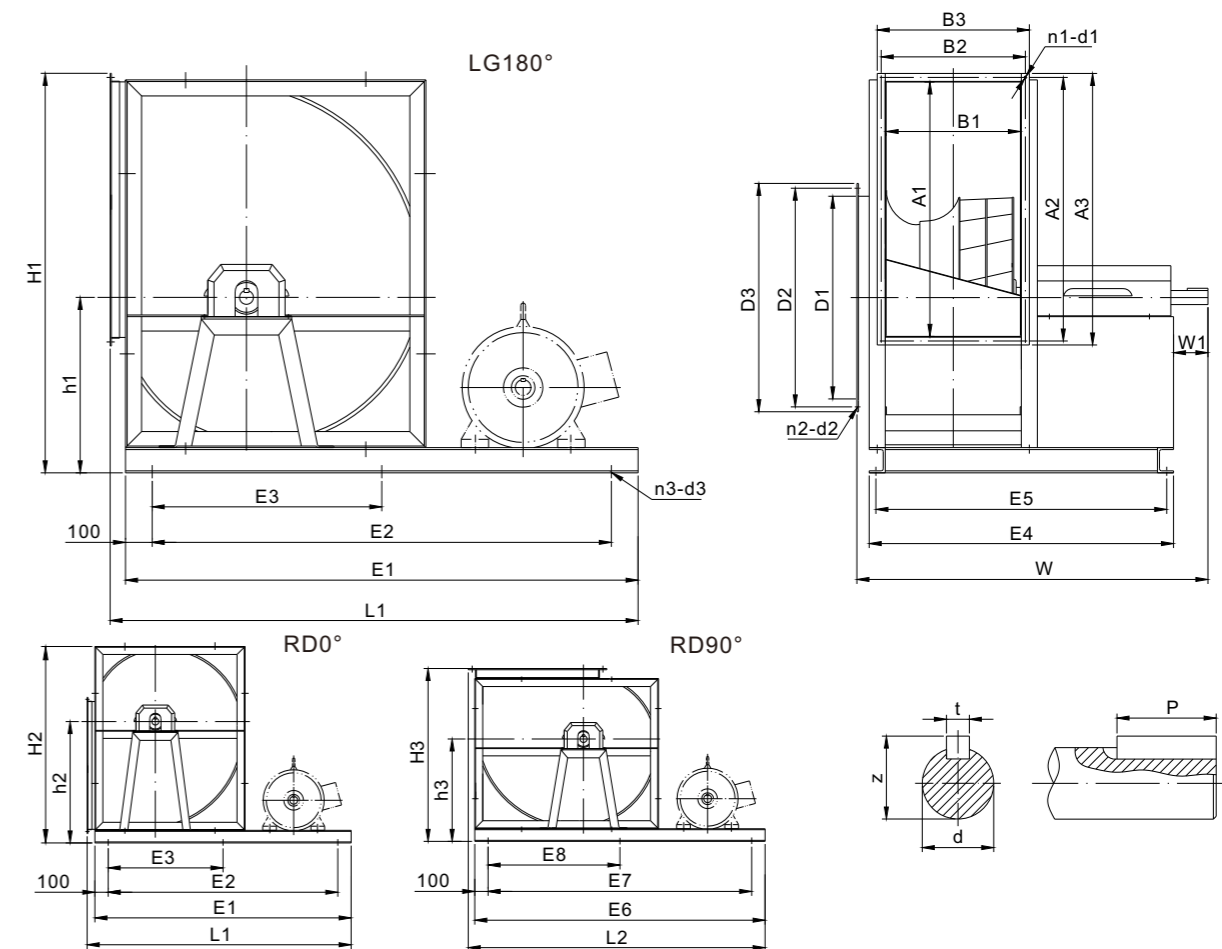


Model	A1	A2	A3	B1	B2	B3	n1-d1	D1	D2	D3	n2-d2	E1	E2	E3	UxS
280	361	391	421	205	235	265	8-φ9	φ286	φ314	φ332	6-φ10	280	/	235	11×16
315	404	434	464	230	260	290	8-φ9	φ320	φ356	φ380	6-φ10	280	/	260	13×18
355	452	482	512	252	282	312	8-φ9	φ362	φ397	φ420	8-φ10	315	/	292	13×18
400	506	536	566	280	310	340	8-φ9	φ410	φ438	φ464	8-φ10	355	/	320	13×18
450	568	598	628	309	339	369	8-φ9	φ457	φ490	φ520	8-φ10	400	/	349	13×18
500	638	668	698	340	370	400	8-φ9	φ506	φ546	φ570	8-φ10	450	/	380	13×18
560	714	744	774	382	412	442	10-φ9	φ570	φ600	φ636	8-φ12	500	250	432	13×18
630	800	830	860	425	455	485	10-φ9	φ640	φ680	φ710	8-φ12	560	280	475	13×18
710	898	928	958	478	508	538	12-φ9	φ705	φ762	φ800	12-φ13	630	315	528	17×22
800	1006	1036	1066	535	565	595	12-φ9	φ805	φ860	φ900	12-φ13	710	355	585	17×22
900	1130	1160	1190	600	630	660	18-φ9	φ905	φ966	φ1000	12-φ13	800	400	650	17×22
1000	1266	1296	1326	673	703	733	18-φ9	φ1005	φ1074	φ1110	12-φ13	900	450	733	17×22

Model	F1	F2	F3	G1	G2	H	h1	h2	L	W	W1	W2	d	t	Z	P
280	318	308	208	432	518	543	211	251	466	616	62	524	25	8	28.3	40
315	282	292	220	480	578	605	235	282	518	655	63	563	25	8	28.3	40
355	351	389	240	548	654	678	265	318	578	721	70	632	30	8	33.3	50
400	371	403	240	612	736	761	299	360	650	751	70	660	30	8	33.3	50
450	385	407	300	681	827	852	336	404	726	838	88	729	35	10	38.3	70
500	402	402	300	750	918	943	375	448	800	877	86	760	35	10	38.3	70
560	444	444	300	844	1030	1053	420	502	892	965	90	854	40	12	43.3	70
630	510	460	330	945	1157	1181	472	564	998	1009	90	898	40	12	43.3	70
710	510	510	390	1075	1302	1325	530	636	1120	1140	110	1008	45	14	48.5	90
800	630	584	394	1180	1468	1491	599	714	1254	1211	110	1070	45	14	48.5	90
900	717	648	456	1319	1648	1670	670	804	1408	1356	120	1205	55	16	59	90
1000	760	760	456	1450	1810	1831	735	884	1540	1434	120	1296	55	16	59	90

未列表型号请咨询我司工作人员 Please consult us when referred to unlisted models

3.8 RFC2 风机安装尺寸(包含底座)
3.8 RFC2 Installation Dimensions (Include basic frame)



Model	A1	A2	A3	B1	B2	B3	n1-d1	D1	D2	D3	n2-d2	H1	H2	H3	h1	h2	h3
280	361	391	421	205	235	265	8-φ9	φ286	φ314	φ332	6-φ10	593	568	516	261	357	301
315	404	434	464	230	260	290	8-φ9	φ320	φ356	φ380	6-φ10	655	628	568	285	393	332
355	452	482	512	252	282	312	8-φ9	φ362	φ397	φ420	8-φ10	728	704	628	315	439	368
400	506	536	566	280	310	340	8-φ9	φ410	φ438	φ464	8-φ10	811	786	700	349	487	410
450	568	598	628	309	339	369	8-φ9	φ457	φ490	φ520	8-φ10	902	877	776	386	541	454
500	638	668	698	340	370	400	8-φ9	φ506	φ546	φ570	8-φ10	1006	981	863	438	606	511
560	714	744	774	382	412	442	10-φ9	φ570	φ600	φ636	8-φ12	1116	1093	955	483	673	565
630	800	830	860	425	455	485	10-φ9	φ640	φ680	φ710	8-φ12	1244	1220	1061	535	748	627
710	898	928	958	478	508	538	12-φ9	φ705	φ762	φ800	12-φ13	1405	1382	1200	610	852	716
800	1006	1036	1066	535	565	595	12-φ9	φ805	φ860	φ900	12-φ13	1571	1548	1334	679	949	794
900	1130	1160	1190	600	630	660	18-φ9	φ905	φ966	φ1006	12-φ13	1770	1748	1508	770	1078	904
1000	1266	1296	1326	673	703	733	18-φ9	φ1005	φ1074	φ1110	12-φ13	1931	1910	1640	835	1175	984

Model	L1	L2	W	W1	E1	E2	E3	E4	E5	E6	E7	E8	n3-d3	d	t	z	p
280	834	910	616	62	800	600	/	524	494	885	685	/	4-φ14	25	8	28.3	40
315	938	1027	655	62	900	700	/	563	533	1000	800	/	4-φ14	25	8	28.3	40
355	1030	1124	721	70	1000	800	/	632	602	1100	900	/	4-φ14	30	8	33.3	50
400	1138	1225	751	70	1100	900	/	655	625	1200	1000	/	4-φ14	30	8	33.3	50
450	1245	1385	838	88	1200	1000	/	724	694	1360	1160	/	4-φ14	35	10	38.3	70
500	1330	1475	877	86	1280	1080	/	760	720	1450	1250	/	4-φ14	35	10	38.3	70
560	1448	1623	965	90	1400	1200	600	850	810	1600	1400	700	6-φ14	40	12	43.3	70
630	1595	1773	1009	90	1540	1340	670	896	853	1750	1550	775	6-φ14	40	12	43.3	70
710	1763	1973	1140	110	1700	1500	750	1006	963	1950	1750	875	6-φ18	45	14	48.5	90
800	1924	2123	1211	110	1850	1650	825	1068	1025	2100	1900	950	6-φ18	45	14	48.5	90
900	2039	2322	1356	120	1950	1750	875	1208	1160	2300	2100	1050	6-φ18	55	16	59	90
1000	2150	2441	1434	120	2060	1860	930	1290	1243	2420	2220	1110	6-φ18	55	16	59	90

未列表型号请咨询我司工作人员 Please consult us when referred to unlisted models

4.0 附件

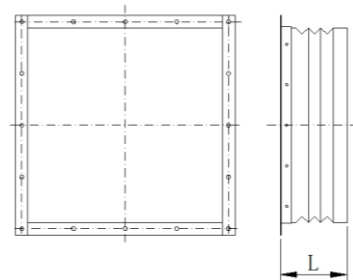
4.0 Accessories

> 出风口软连接装置

出风口软连接是用聚酯/PVC织物材料制成，两侧配镀锌钢板制作的法兰。尺寸“L”为155mm的软连接适合于各种大小的风机。根据需要，可定制特殊的软连接。

Flexible outlet connection

The flexible connection for the outlet is manufactured with a polyester/PVC fabric and two matching flanges, made in galvanised steel sheet. The “L” dimension, valid for all fan sizes, is equal to 155mm. Special flexible connections can be manufactured on request.

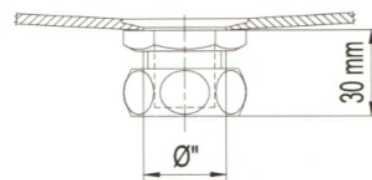


> 排水孔

通常设于风机的最低部位，以排除冷凝水，尺寸 ϕ 为1/2"。

Drain plug

Usually fitted at the lowest part of the fan to facilitate drain of condensation, $\phi = 1/2"$.



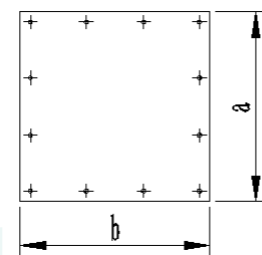
> 检修门

在风机的壳体上课开设检修门，它用钢板作成，并用快速松开的螺钉固定，用合成的密封垫防止漏风。检修门的位置必须在订货单中说明。

Inspection door

Can be fitted to the fan casing and consists of a steel plate fixed by quick release screws. A synthetic gasket prevents leakage. Position of the inspection door must be clearly stated in the order.

	a	b
BAS 200 - 280	150	120
BAS 315 - 560	190	170
BAS 630 - 1000	240	220

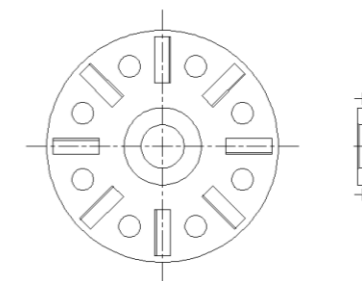


> 散热环

设于风机的电机轴头端，轴孔配合，以加快电机散热。

Ring Radiator

Set in the fan motor shaft head end assembled with the shaft hole in order to speed up the motor heat dissipation.

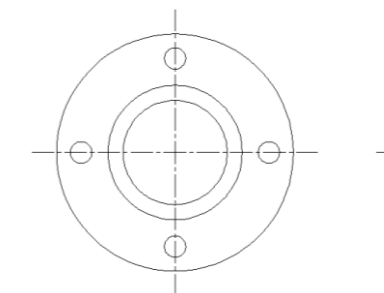


> 轴封

在电机轴穿过蜗壳侧板处加设轴封，提高风机的密封性。

Shaft seal

The shaft seal is added on the side plate of the motor shaft passing through the volute to improve the airtightness of the fan.



> 进风法兰和保护网

进风口分为L型和U型，均可加设保护网。

Air inlet flange and protective net

The air inlet flange is divided into L type and U type. Both of the two types can be set protective net.

