



VENT-100 NK to VENT-315 NK



VENT-355N and VENT-400N

Range of in-line duct centrifugal fans, manufactured from high grade corrosion resistant pressed galvanised steel and supplied as standard with a terminal box and a robust mounting foot. All model include an enclosed type, single-phase external rotor motor with factory matched backward curved nonstalling impeller.

(1) Models 355 and 400 are manufactured in sheet steel protected against corrosion by cataforesis primer and black polyester paint finish.

Motors

100NK - 250NK models: Motors are IP44, class B insulation with ball bearings and safety thermal overload protection.

315NK model: motor is IP44, class F insulation with ball bearings and safety thermal overload protection.

355N and 400N models: Motors are IP54, class F, with ball bearings and safety thermal overload protection.

Electrical supply:

Single phase 230V-50/60Hz.

All single-phase models are speed controllable by tension.

Additional Information

Impellers from 100 to 250 models are manufactured from injection moulded plastic.



S&P certifies that the VENT NK shown herein are licensed to bear the AMCA Seal. The ratings shown are based on tests and procedures performed in accordance with AMCA Publication 211 and AMCA Publication 311 and comply with the requirements of the AMCA Certified Ratings Program



Mounting foot

Supplied with unit as standard (100NK - 315NK models).

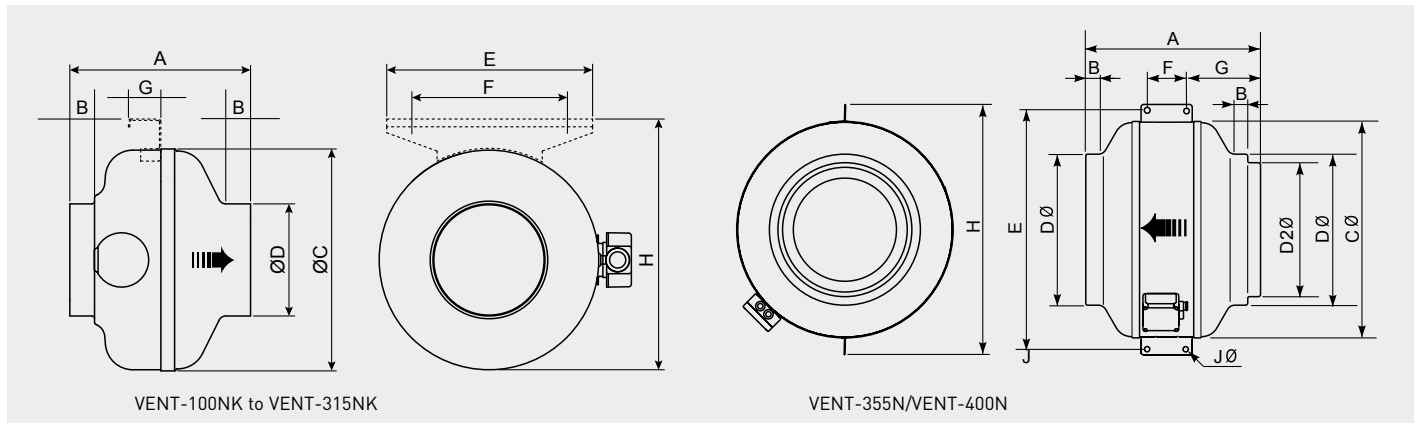
TECHNICAL CHARACTERISTICS

Before installation check that the product electrical characteristics listed on the data plate label (voltage, power, frequency, etc.) match those of the intended electrical supply.

Model	Voltage (V-Hz)	Speed (rpm)	Maximum absorbed power (W)	Maximum absorbed current (A)	Maximum airflow (m³/h)	Sound pressure level* (dB(A))			Maximum ambient temperature (°C)	Weight (kg)
						Inlet	Outlet	Radiated		
VENT-100NK	230-60	3050	76	0,3	317	58	54	44	-20/+60	3
VENT-125NK	230-60	2990	78	0,3	424	58	55	42	-20/+60	3
VENT-150NK	230-60	2580	128	0,6	730	59	55	42	-20/+60	5
VENT-160NK	230-60	2580	125	0,5	751	60	56	45	-20/+60	5
VENT-200NK	230-60	3050	213	0,9	1.092	64	61	48	-20/+60	5
VENT-250NK	230-60	3010	212	0,9	1.123	64	64	46	-20/+60	6
VENT-315NK	230-60	2970	372	1,6	1.499	68	70	48	-20/+60	8
VENT-355N	230-60	1530	427	1,8	2.950	60	63	43	-40/+70	18,8
VENT-400N	230-60	1550	807	3,4	4.280	64	65	51	-40/+70	22,2

* Sound pressure level in dB(A) measured at 1,5m, in free field condition, at the maximum air volume.

DIMENSIONS (mm)



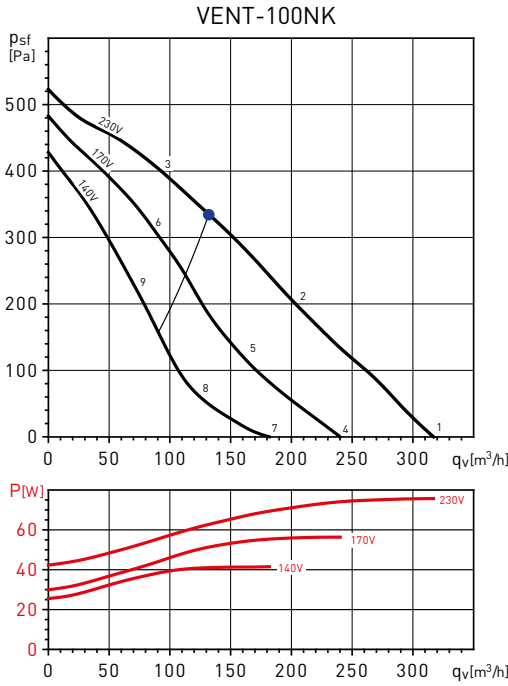
Model	A	B	C	D	D2	E*	F*	G*	H*	J
VENT-100 NK	195	23	243	98		225	170	35,5	275	
VENT-125 NK	197	27	243	123		225	170	35,5	275	
VENT-150 NK	213	22	333	147		225	170	35,5	368	
VENT-160 NK	220	27	333	157		225	170	35,5	368	
VENT-200 NK	223	25	333	198		225	170	35,5	368	
VENT-250 NK	205	27	333	248		225	170	35,5	368	
VENT-315 NK	232	25	401	312		225	170	35,5	438	
VENT-355 N	410	25	508	354	314	552	100	170	587	10,5
VENT-400 N	431	25	568	399	354	628	100	185	647	10,5

* From VENT-100NK to VENT-315NK: support brackets supplied in the packaging, not fitted on the fan.

PERFORMANCE CURVES - ACOUSTIC CHARACTERISTICS

- q_v : Airflow in m^3/h
- p_{st} : Static pressure in Pa.
- P: Input power in W.
- SFP: Specific fan power in $W/m^3/s$ (blue curves)
- Performance data in accordance with ISO 5801.

Air performance certified by AMCA is for installation type D – Ducted inlet, Ducted outlet.
Performance ratings do not include the effects of appurtenances (accessories).



Sound data

Working point	1	2	3	4	5	6	7	8	9
LwiA	79	77	79	72	71	77	66	65	73

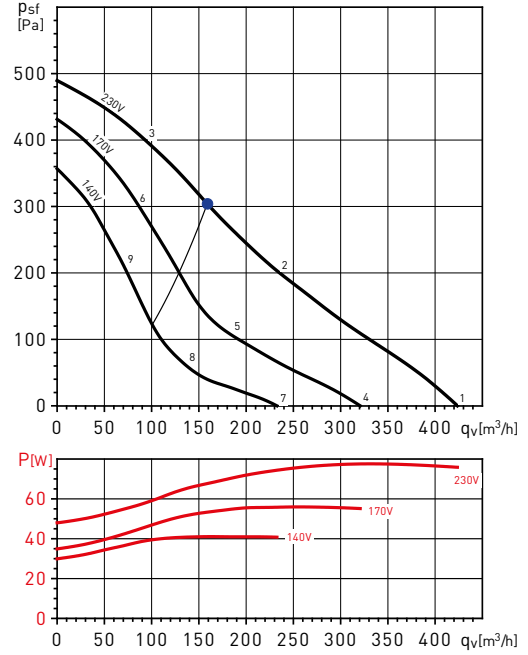
Sound performance certified by AMCA. Values shown are for inlet LwiA sound power levels for installation type D: ducted inlet, ducted outlet. Ratings include the effects of duct end correction.

The following sound data is a complementary data taken from S&P sound laboratory according ISO 13347-3, this data is not licensed by AMCA International.

Sound power spectrum (dB(A))

VENT-100NK	63	125	250	500	1000	2000	4000	8000	LwA
1 Inlet	34	49	60	64	70	66	62	49	73
1 Outlet	35	48	55	61	65	62	59	49	68
1 Radiated	22	27	47	55	52	50	52	38	59
2 Inlet	35	50	60	62	68	63	58	46	71
2 Outlet	35	50	55	60	62	60	55	46	66
2 Radiated	22	26	44	52	49	48	48	36	56
3 Inlet	30	51	60	62	72	62	56	47	73
3 Outlet	32	50	55	59	63	59	54	47	67
3 Radiated	19	24	40	51	50	47	47	39	55
4 Inlet	27	42	53	57	63	59	55	43	66
4 Outlet	28	41	48	54	58	56	52	42	62
4 Radiated	15	21	40	48	45	44	45	31	52
5 Inlet	29	45	55	57	62	58	52	40	65
5 Outlet	29	44	49	54	56	54	49	41	61
5 Radiated	16	20	38	46	44	42	42	30	50
6 Inlet	27	48	57	59	69	59	53	44	71
6 Outlet	30	48	52	57	61	57	52	45	64
6 Radiated	16	22	38	48	48	44	45	36	53
7 Inlet	21	36	47	51	57	53	49	36	60
7 Outlet	22	35	42	48	52	50	46	36	56
7 Radiated	9	14	34	42	39	38	39	25	46
8 Inlet	23	39	49	50	56	51	46	34	59
8 Outlet	23	38	43	48	50	48	43	35	54
8 Radiated	10	14	32	40	38	36	36	24	44
9 Inlet	24	44	53	55	66	56	50	41	67
9 Outlet	26	44	48	53	57	53	48	41	60
9 Radiated	12	18	34	44	44	40	41	32	49

VENT-125NK



Sound data

Working point	1	2	3	4	5	6	7	8	9
LwiA	78	76	76	72	69	73	65	63	69

Sound performance certified by AMCA. Values shown are for inlet LwiA sound power levels for installation type D: ducted inlet, ducted outlet. Ratings include the effects of duct end correction.

The following sound data is a complementary data taken from S&P sound laboratory according ISO 13347-3, this data is not licensed by AMCA International.

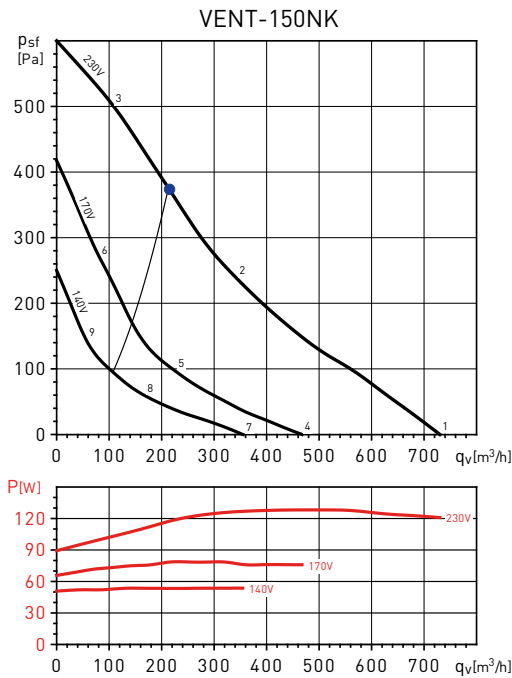
Sound power spectrum (dB(A))

VENT-125NK	63	125	250	500	1000	2000	4000	8000	LwA
1 Inlet	28	46	56	66	66	66	67	64	72
1 Outlet	30	46	49	64	64	64	61	50	70
1 Radiated	38	38	46	43	53	50	50	39	57
2 Inlet	28	48	57	65	64	64	59	47	70
2 Outlet	32	49	51	63	62	61	57	46	68
2 Radiated	38	39	43	41	51	46	44	35	54
3 Inlet	27	52	56	66	64	63	57	49	70
3 Outlet	30	53	51	65	63	61	56	48	69
3 Radiated	32	38	43	41	53	45	43	36	55
4 Inlet	22	40	49	59	60	61	58	45	66
4 Outlet	24	40	43	58	58	57	55	44	63
4 Radiated	32	31	40	36	47	43	43	33	50
5 Inlet	22	42	51	58	57	57	52	41	63
5 Outlet	25	43	44	56	56	54	50	40	61
5 Radiated	32	32	37	35	45	39	38	29	48
6 Inlet	24	49	53	63	61	60	55	46	67
6 Outlet	27	50	48	62	60	58	54	45	66
6 Radiated	29	35	40	38	50	42	40	33	52
7 Inlet	15	33	42	52	53	54	51	38	59
7 Outlet	17	33	36	51	51	50	48	37	56
7 Radiated	25	25	33	30	40	36	36	26	44
8 Inlet	16	36	45	52	51	51	46	35	57
8 Outlet	19	37	38	50	50	48	44	34	55
8 Radiated	26	26	31	29	39	33	32	23	42
9 Inlet	20	45	49	59	57	56	51	42	63
9 Outlet	23	46	44	58	56	54	50	41	62
9 Radiated	25	31	36	34	46	38	36	29	48

PERFORMANCE CURVES - ACOUSTIC CHARACTERISTICS

- q_v : Airflow in m^3/h
- p_{sf} : Static pressure in Pa.
- P: Input power in W.
- SFP: Specific fan power in $W/m^3/s$ (blue curves)
- Performance data in accordance with ISO 5801.

Air performance certified by AMCA is for installation type D – Ducted inlet, Ducted outlet.
Performance ratings do not include the effects of appurtenances (accessories).



Sound data

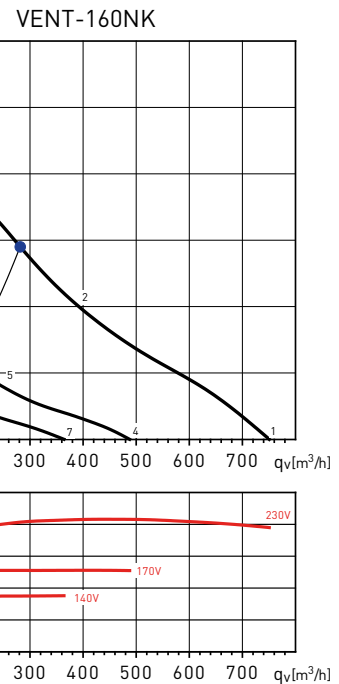
Working point	1	2	3	4	5	6	7	8	9
LwiA	78	75	78	67	65	72	62	59	65

Sound performance certified by AMCA. Values shown are for inlet LwiA sound power levels for installation type D: ducted inlet, ducted outlet. Ratings include the effects of duct end correction.

The following sound data is a complementary data taken from S&P sound laboratory according ISO 13347-3, this data is not licensed by AMCA International.

Sound power spectrum (dB(A))

VENT-150NK	63	125	250	500	1000	2000	4000	8000	LwA
1 Inlet	34	51	56	69	66	67	65	53	73
1 Outlet	33	50	48	64	63	64	62	51	69
1 Radiated	20	30	39	51	51	52	47	38	57
2 Inlet	30	52	59	67	63	62	55	46	70
2 Outlet	31	52	47	61	61	60	53	44	66
2 Radiated	18	30	39	49	49	48	40	36	54
3 Inlet	31	57	64	69	67	67	60	54	73
3 Outlet	34	56	52	65	63	63	58	54	69
3 Radiated	20	33	40	51	52	53	44	40	57
4 Inlet	23	40	45	58	55	56	54	42	62
4 Outlet	23	39	37	53	53	53	51	40	59
4 Radiated	10	20	29	41	41	42	37	28	47
5 Inlet	19	42	49	57	53	52	45	36	60
5 Outlet	20	41	36	50	50	49	42	34	55
5 Radiated	8	20	29	39	39	38	30	26	44
6 Inlet	24	50	58	62	60	60	53	47	67
6 Outlet	27	49	46	58	57	57	51	47	63
6 Radiated	13	26	33	44	45	46	38	33	50
7 Inlet	18	34	40	52	50	51	48	36	57
7 Outlet	17	33	32	47	47	47	45	35	53
7 Radiated	14	23	36	35	36	36	32	22	41
8 Inlet	14	36	43	51	47	46	40	31	54
8 Outlet	15	36	31	45	45	43	37	28	50
8 Radiated	15	24	33	33	33	33	25	20	38
9 Inlet	17	43	51	55	53	53	46	40	60
9 Outlet	20	42	39	51	50	50	44	40	56
9 Radiated	19	27	37	38	39	39	31	26	43



Sound data

Working point	1	2	3	4	5	6	7	8	9
LwiA	80	76	79	70	64	72	63	59	65

Sound performance certified by AMCA. Values shown are for inlet LwiA sound power levels for installation type D: ducted inlet, ducted outlet. Ratings include the effects of duct end correction.

The following sound data is a complementary data taken from S&P sound laboratory according ISO 13347-3, this data is not licensed by AMCA International.

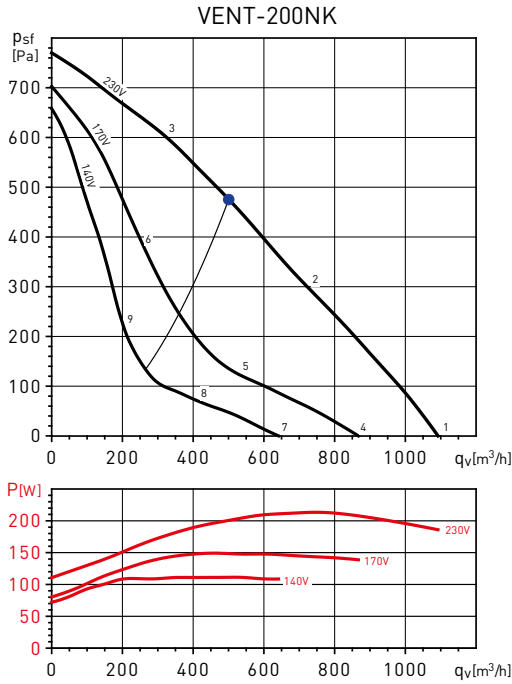
Sound power spectrum (dB(A))

VENT-160NK	63	125	250	500	1000	2000	4000	8000	LwA
1 Inlet	34	54	60	70	68	69	67	57	75
1 Outlet	35	52	52	65	64	66	63	55	71
1 Radiated	15	28	40	49	53	56	51	41	59
2 Inlet	31	57	60	67	65	65	57	47	71
2 Outlet	30	54	49	63	62	61	54	44	67
2 Radiated	13	28	38	48	50	51	41	31	55
3 Inlet	34	59	65	69	67	67	61	54	74
3 Outlet	36	58	54	65	63	63	58	53	70
3 Radiated	19	32	40	49	52	54	45	40	57
4 Inlet	24	44	50	59	58	59	56	47	65
4 Outlet	25	42	42	55	54	56	53	45	61
4 Radiated	18	30	39	43	46	46	41	31	49
5 Inlet	19	45	49	55	53	53	46	36	59
5 Outlet	20	44	38	52	51	50	44	33	57
5 Radiated	18	28	37	39	40	40	30	20	44
6 Inlet	27	52	58	62	60	60	54	47	67
6 Outlet	29	51	47	58	57	56	51	46	63
6 Radiated	25	33	42	45	47	47	38	33	50
7 Inlet	18	37	43	53	51	53	50	40	58
7 Outlet	18	36	36	48	48	49	47	39	54
7 Radiated	12	23	33	36	40	40	35	25	43
8 Inlet	14	40	43	49	47	47	40	30	54
8 Outlet	14	38	33	46	46	44	38	28	51
8 Radiated	12	22	31	33	34	34	24	14	38
9 Inlet	20	45	51	55	53	53	47	40	60
9 Outlet	23	44	41	51	50	50	44	39	56
9 Radiated	18	26	35	38	40	40	31	26	43

PERFORMANCE CURVES - ACOUSTIC CHARACTERISTICS

- q_v : Airflow in m^3/h
- p_{st} : Static pressure in Pa.
- P: Input power in W.
- SFP: Specific fan power in $W/m^3/s$ (blue curves)
- Performance data in accordance with ISO 5801.

Air performance certified by AMCA is for installation type D – Ducted inlet, Ducted outlet.
Performance ratings do not include the effects of appurtenances (accessories).



Sound data

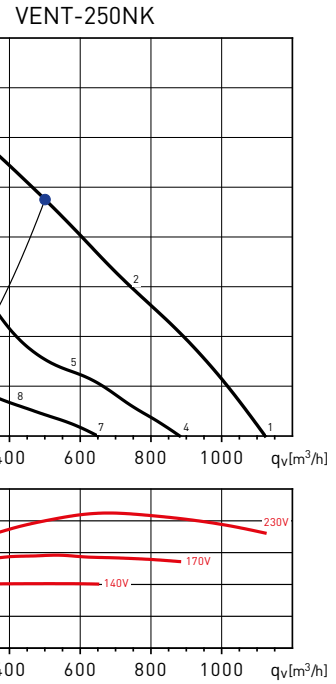
Working point	1	2	3	4	5	6	7	8	9
LwiA	83	76	78	77	67	73	70	60	67

Sound performance certified by AMCA. Values shown are for inlet LwiA sound power levels for installation type D: ducted inlet, ducted outlet. Ratings include the effects of duct end correction.

The following sound data is a complementary data taken from S&P sound laboratory according ISO 13347-3, this data is not licensed by AMCA International.

Sound power spectrum (dB(A))

VENT-200NK	63	125	250	500	1000	2000	4000	8000	LwA
1 Inlet	33	53	64	72	74	73	68	69	79
1 Outlet	36	53	61	67	70	70	68	68	76
1 Radiated	27	36	42	49	54	60	51	51	62
2 Inlet	31	50	60	66	67	65	62	56	72
2 Outlet	33	50	58	60	64	64	62	56	69
2 Radiated	26	34	40	44	48	54	46	40	56
3 Inlet	32	58	65	69	69	67	62	55	74
3 Outlet	37	60	61	63	67	66	62	55	72
3 Radiated	26	38	44	47	51	56	45	38	58
4 Inlet	28	48	59	66	68	67	63	63	73
4 Outlet	30	48	56	62	64	65	63	62	71
4 Radiated	21	31	37	43	49	55	46	46	57
5 Inlet	22	42	51	57	58	56	53	47	63
5 Outlet	25	42	49	52	55	55	53	47	61
5 Radiated	17	25	31	35	40	45	37	31	47
6 Inlet	27	54	60	64	64	62	57	50	69
6 Outlet	32	55	56	59	62	61	57	50	67
6 Radiated	21	34	39	42	46	51	40	33	53
7 Inlet	21	41	52	59	61	60	56	56	66
7 Outlet	23	41	49	55	57	58	56	56	64
7 Radiated	15	24	30	37	42	48	39	39	50
8 Inlet	15	35	44	50	51	50	47	41	56
8 Outlet	18	35	43	45	48	49	47	40	54
8 Radiated	11	18	24	29	33	39	30	25	41
9 Inlet	21	48	54	58	58	56	51	44	63
9 Outlet	26	49	50	52	56	55	51	44	61
9 Radiated	15	28	33	36	40	45	34	27	47



Sound data

Working point	1	2	3	4	5	6	7	8	9
LwiA	82	75	76	76	66	71	70	59	65

Sound performance certified by AMCA. Values shown are for inlet LwiA sound power levels for installation type D: ducted inlet, ducted outlet. Ratings include the effects of duct end correction.

The following sound data is a complementary data taken from S&P sound laboratory according ISO 13347-3, this data is not licensed by AMCA International.

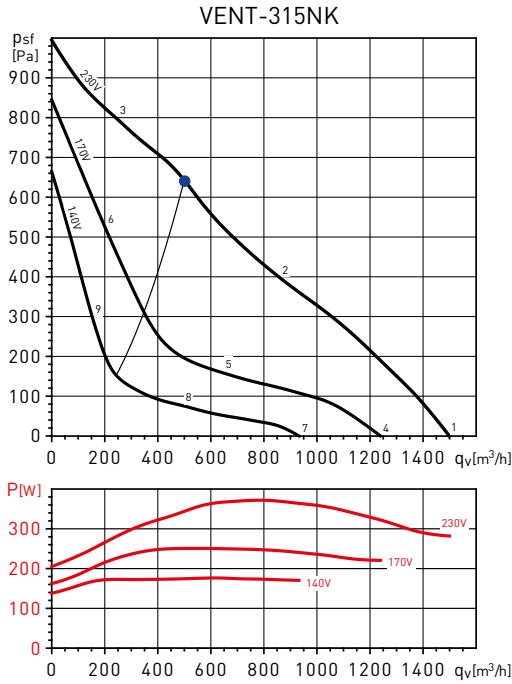
Sound power spectrum (dB(A))

VENT-250NK	63	125	250	500	1000	2000	4000	8000	LwA
1 Inlet	32	55	68	70	74	72	69	68	79
1 Outlet	36	56	67	74	71	72	69	69	79
1 Radiated	24	32	41	51	53	56	53	51	60
2 Inlet	33	51	61	64	67	65	63	57	72
2 Outlet	36	53	64	64	66	66	64	59	72
2 Radiated	26	29	37	47	47	49	48	40	54
3 Inlet	35	55	67	65	68	65	61	55	73
3 Outlet	38	58	63	66	68	67	62	56	73
3 Radiated	26	33	40	46	47	50	47	38	54
4 Inlet	26	49	63	64	68	66	63	63	73
4 Outlet	30	50	61	68	65	67	64	64	73
4 Radiated	18	26	35	45	48	50	48	45	55
5 Inlet	25	42	53	55	59	56	55	49	63
5 Outlet	28	45	56	55	57	58	55	51	64
5 Radiated	18	21	29	39	38	41	39	32	46
6 Inlet	30	50	63	60	63	60	56	50	68
6 Outlet	33	53	58	61	63	63	57	51	68
6 Radiated	21	28	36	41	43	45	42	33	49
7 Inlet	20	43	56	58	62	60	57	56	67
7 Outlet	24	44	55	62	59	61	58	58	67
7 Radiated	12	20	29	39	41	44	42	39	49
8 Inlet	18	35	46	48	51	49	47	42	56
8 Outlet	20	38	49	48	50	51	48	43	57
8 Radiated	11	13	21	31	31	34	32	25	39
9 Inlet	24	45	57	54	57	54	50	44	62
9 Outlet	28	47	52	55	57	57	52	45	62
9 Radiated	15	22	30	36	37	39	36	28	43

PERFORMANCE CURVES - ACOUSTIC CHARACTERISTICS

- q_v : Airflow in m^3/h
- p_{st} : Static pressure in Pa.
- P: Input power in W.
- SFP: Specific fan power in $W/m^3/s$ (blue curves)
- Performance data in accordance with ISO 5801.

Air performance certified by AMCA is for installation type D – Ducted inlet, Ducted outlet.
 Performance ratings do not include the effects of appurtenances (accessories).



Sound data

Working point	1	2	3	4	5	6	7	8	9
LwA	86	82	87	81	72	82	75	65	76

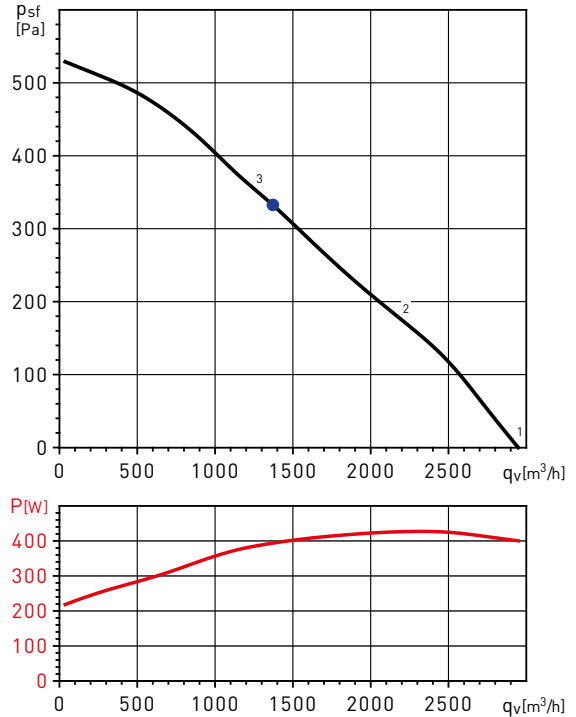
Sound performance certified by AMCA. Values shown are for inlet LwA sound power levels for installation type D: ducted inlet, ducted outlet. Ratings include the effects of duct end correction.

The following sound data is a complementary data taken from S&P sound laboratory according ISO 13347-3, this data is not licensed by AMCA International.

Sound power spectrum (dB(A))

VENT-315NK	63	125	250	500	1000	2000	4000	8000	LwA	
1	Inlet	36	57	69	74	79	75	73	72	83
	Outlet	44	55	69	78	80	78	74	72	84
	Radiated	29	39	46	53	55	58	56	51	62
2	Inlet	44	61	72	73	75	69	68	62	79
	Outlet	46	58	70	75	75	73	69	64	80
	Radiated	30	43	49	51	50	53	52	41	59
3	Inlet	46	70	79	77	78	73	70	63	84
	Outlet	55	67	78	74	78	76	71	65	83
	Radiated	38	50	52	54	55	57	55	43	62
4	Inlet	32	53	65	70	74	71	68	67	78
	Outlet	40	50	65	73	75	74	69	67	80
	Radiated	25	34	42	48	50	54	52	46	58
5	Inlet	34	51	62	64	65	60	58	52	69
	Outlet	36	49	61	65	65	63	59	54	70
	Radiated	21	33	39	42	41	44	43	31	49
6	Inlet	41	66	74	73	74	69	65	58	79
	Outlet	50	63	73	69	73	71	66	61	79
	Radiated	34	45	47	49	50	52	50	38	57
7	Inlet	25	46	59	64	68	65	62	61	72
	Outlet	34	44	59	67	69	68	63	61	74
	Radiated	19	28	36	42	44	48	46	40	52
8	Inlet	27	44	55	56	57	52	51	45	62
	Outlet	29	41	53	58	58	56	52	47	63
	Radiated	14	26	32	35	34	36	35	24	42
9	Inlet	35	60	68	67	68	63	59	52	73
	Outlet	44	57	67	63	67	65	60	55	73
	Radiated	28	39	41	43	44	46	44	32	51

VENT-355N



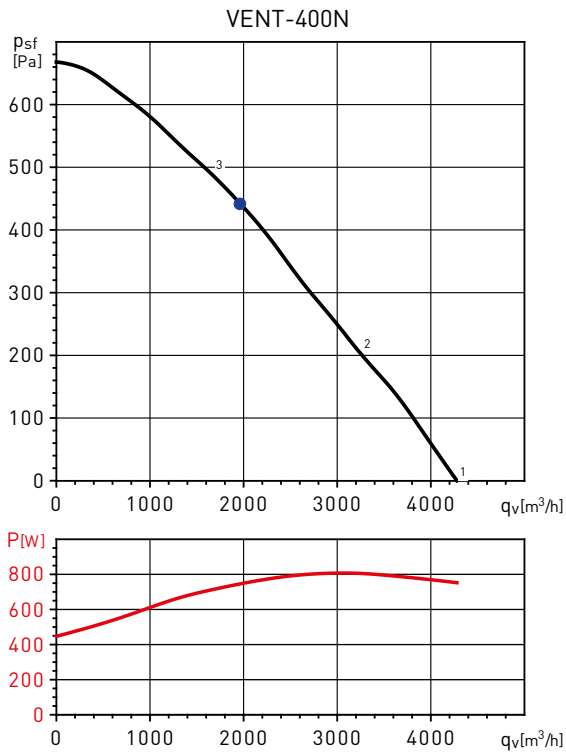
Sound power spectrum (dB(A))

VENT-355N		63	125	250	500	1000	2000	4000	8000	LwA
1	Inlet	46	63	68	70	70	65	64	51	75
	Outlet	45	60	67	73	74	71	64	53	78
	Radiated	37	53	50	50	52	45	43	31	57
2	Inlet	41	59	65	67	68	62	59	50	73
	Outlet	41	57	66	72	71	68	60	51	76
	Radiated	32	49	47	47	50	42	38	30	55
3	Inlet	47	62	69	70	70	63	60	51	75
	Outlet	45	59	68	74	72	69	62	53	78
	Radiated	38	52	51	50	52	43	39	31	57

PERFORMANCE CURVES - ACOUSTIC CHARACTERISTICS

- q_v : Airflow in m^3/h
- p_{sf} : Static pressure in Pa.
- P: Input power in W.
- SFP: Specific fan power in $W/m^3/s$ (blue curves)
- Performance data in accordance with ISO 5801.

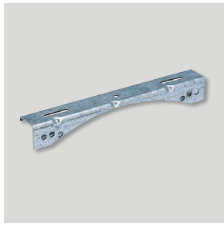
Air performance certified by AMCA is for installation type D – Ducted inlet, Ducted outlet.
 Performance ratings do not include the effects of appurtenances (accessories).



Sound power spectrum (dB(A))

VENT-400N		63	125	250	500	1000	2000	4000	8000	LwA
1	Inlet	47	65	71	75	73	68	65	55	79
	Outlet	50	67	70	73	76	72	64	55	80
	Radiated	40	54	59	59	61	53	51	45	65
2	Inlet	44	62	68	72	70	64	60	52	76
	Outlet	47	64	67	71	73	68	59	51	77
	Radiated	36	51	56	56	58	50	47	42	62
3	Inlet	46	64	71	71	68	62	57	50	76
	Outlet	48	64	69	71	73	68	59	51	77
	Radiated	39	53	59	55	56	47	44	40	63

MOUNTING ACCESSORIES



Mounting foot
 (supplied with unit as standard).



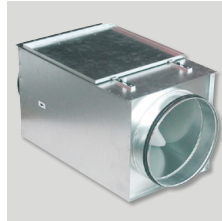
ACOP-VENT
 Flexible connectors.



DEF-VENT
 Protection grille.



MFL-G4
 Filtration box of G4 grade filtration.



MFL-F
 Box in galvanised steel for inserting the MFR F5, F6 and F7 filters.



MBW
 Hot water coil.



SIL
 Circular sound attenuators.



GSA-M0
 Aluminium flexible ducting.



GSI-M0
 Insulated aluminium ducting.



CX
 Worm drive duct connectors.



BOC
 Metal inlet valves.



BOR
 Plastic inlet valves.



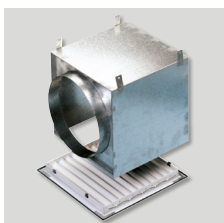
GCI
 Circular inlet grilles.



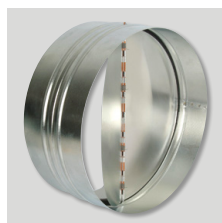
VR
 GCI mounting frame.



GRI
 Interior square grilles.



RP
 GRI mounting frame.



CAR
 Backdraught shutters.

For more information see Mounting accessories.

ELECTRICAL ACCESSORIES



REB
 Electronic single phase speed controllers.



RMB
 Autotransformer single phase speed controllers.



PARO/MARCHA 5P and 8P
 ON/OFF electrical isolation switch.

For more information see Electrical accessories.