



YMTECH CO., LTD. certifies that the YSF-3022 shown herein is licensed to bear the AMCA Seal. The ratings shown are based on tests and procedures performed in accordance with AMCA Publication 211 and comply with the requirements of the AMCA Certified Ratings Program.

# CENTRIFUGAL FAN

- High Efficiency
- High Performance
- Low Noise



**YM Tech co., Ltd**



# YM-tech is Solution Partner in Cooling Tower

The solid technological capacity of YM-tech Airconditioning Equipment Co., LTD enabled it to establish the resonable production process and the perfect quality quarantee system. YM-tech Airconditioning Equipment Co., LTD will make every effort to bring technical innovation, quality improvment, and product development. As manufacturer equipped with the competitive advantages against the world, YM-tech Airconditioning Equipment Co., LTD with not make anything but is the best. It might be easy to fine a company full of enthusiasm. It also might be easy to find a factory without ceasing production but, it is not easy to fine a company with the best technology.

We are concentrating on the customer satisfaction by improving the quality and services as well as all sides.

which is from the company policy of customer centered way.







**YMtech**

## **CENTRIFUGAL FAN**

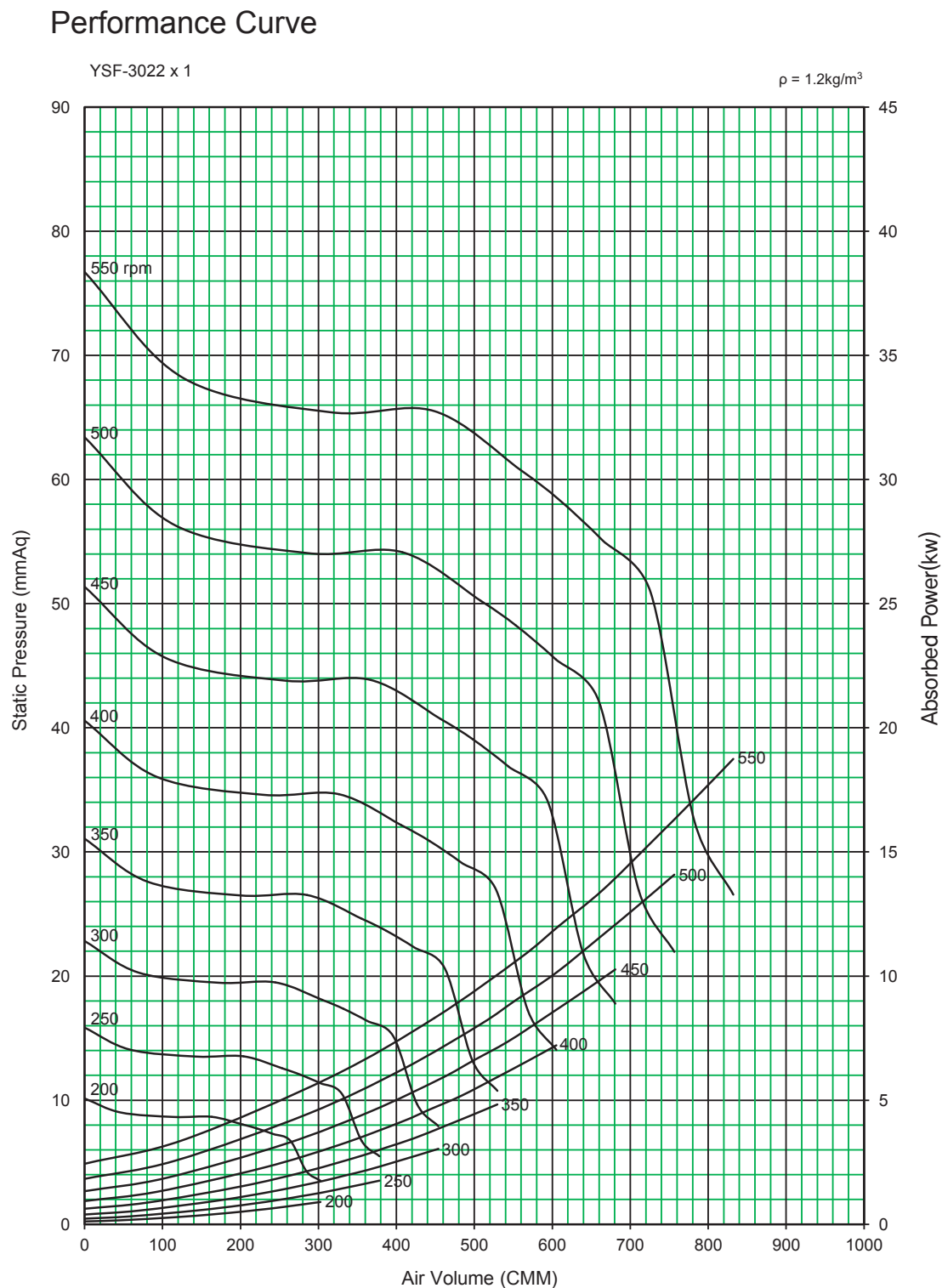
Centrifugal Fan applied at YSF Series is suitable appliance fan for forced draft cooling tower and provides wide range of air volume.

### **Contents**

|                       |   |
|-----------------------|---|
| Performance Curve     |   |
| YSF-3022 .....        | 2 |
| Lay-Out Drawing ..... | 4 |

# CENTRIFUGAL FAN (YSF-Series)

## Performance Curve ■ YSF-3022



Performance certified is for installation type B - Free inlet, Ducted outlet.  
Power rating (kW) does not include transmission losses.  
Performance ratings do not include the effects of appurtenances (accessories).



## CENTRIFUGAL FAN (YSF-Series)

| CMM  | OV   | 5mmAq |      | 10mmAq |      | 15mmAq |      | 20mmAq |       | 25mmAq |       | 30mmAq |       | 35mmAq |       | 40mmA |       |
|------|------|-------|------|--------|------|--------|------|--------|-------|--------|-------|--------|-------|--------|-------|-------|-------|
|      |      | RPM   | BkW  | RPM    | BkW  | RPM    | BkW  | RPM    | BkW   | RPM    | BkW   | RPM    | BkW   | RPM    | BkW   | RPM   | BkW   |
| 200  | 6.4  | 166   | 0.37 | 219    | 0.60 | 263    | 0.85 | 304    | 1.14  | 340    | 1.43  | 372    | 1.75  | 400    | 2.08  | 427   | 2.42  |
| 250  | 8.0  | 184   | 0.60 | 227    | 0.84 | 269    | 1.13 | 304    | 1.42  | 340    | 1.77  | 372    | 2.14  | 402    | 2.50  | 430   | 2.87  |
| 300  | 9.7  | 212   | 0.97 | 238    | 1.17 | 277    | 1.50 | 312    | 1.84  | 340    | 2.11  | 372    | 2.55  | 402    | 2.98  | 430   | 3.41  |
| 350  | 11.3 | 234   | 1.42 | 259    | 1.66 | 288    | 1.95 | 321    | 2.34  | 351    | 2.73  | 380    | 3.15  | 405    | 3.56  | 430   | 3.96  |
| 400  | 12.9 |       |      | 286    | 2.35 | 302    | 2.55 | 331    | 2.94  | 360    | 3.39  | 388    | 3.84  | 413    | 4.31  | 438   | 4.78  |
| 450  | 14.5 |       |      | 312    | 3.19 | 329    | 3.46 | 343    | 3.70  | 371    | 4.15  | 397    | 4.67  | 422    | 5.17  | 446   | 5.67  |
| 500  | 16.1 |       |      | 333    | 4.11 | 356    | 4.56 | 369    | 4.82  | 383    | 5.11  | 408    | 5.62  | 432    | 6.17  | 455   | 6.73  |
| 550  | 17.7 |       |      |        |      | 381    | 5.83 | 396    | 6.18  | 407    | 6.45  | 420    | 6.77  | 443    | 7.34  | 465   | 7.92  |
| 600  | 19.3 |       |      |        |      | 402    | 7.19 | 424    | 7.79  | 435    | 8.09  | 445    | 8.39  | 456    | 8.69  | 477   | 9.32  |
| 650  | 20.9 |       |      |        |      |        |      | 447    | 9.48  | 462    | 10.00 | 472    | 10.33 | 482    | 10.66 | 491   | 10.97 |
| 700  | 22.5 |       |      |        |      |        |      | 468    | 11.35 | 488    | 12.12 | 500    | 12.57 | 509    | 12.92 | 518   | 13.27 |
| 750  | 24.1 |       |      |        |      |        |      |        |       | 509    | 4.30  | 528    | 15.11 | 536    | 15.50 | 545   | 15.88 |
| 800  | 25.7 |       |      |        |      |        |      |        |       | 530    | 16.74 | 549    | 17.63 | 564    | 18.41 | 572   | 18.82 |
| 850  | 27.3 |       |      |        |      |        |      |        |       |        |       | 570    | 20.42 | 587    | 21.36 | 600   | 22.12 |
| 900  | 29.0 |       |      |        |      |        |      |        |       |        |       |        |       | 608    | 24.51 | 623   | 25.50 |
| 950  | 30.6 |       |      |        |      |        |      |        |       |        |       |        |       | 629    | 27.97 | 645   | 29.04 |
| 1000 | 32.2 |       |      |        |      |        |      |        |       |        |       |        |       |        |       | 666   | 32.90 |

| CMM  | OV   | 45mmAq |       | 50mmAq |       | 55mmAq |       | 60mmAq |       | 65mmAq |       | 70mmAq |       | 75mmAq |       | 80mmA |       |
|------|------|--------|-------|--------|-------|--------|-------|--------|-------|--------|-------|--------|-------|--------|-------|-------|-------|
|      |      | RPM    | BkW   | RPM    | BkW   | RPM    | BkW   | RPM    | BkW   | RPM    | BkW   | RPM    | BkW   | RPM    | BkW   | RPM   | BkW   |
| 350  | 11.3 | 456    | 4.46  | 481    | 4.97  | 504    | 5.48  | 527    | 5.99  | 548    | 6.50  | 569    | 7.01  | 589    | 7.53  | 608   | 8.04  |
| 400  | 12.9 | 460    | 5.25  | 482    | 5.70  | 504    | 6.23  | 526    | 6.80  | 548    | 7.38  | 569    | 7.96  | 589    | 8.55  | 608   | 9.13  |
| 450  | 14.5 | 468    | 6.21  | 490    | 6.74  | 510    | 7.27  | 530    | 7.78  | 548    | 8.29  | 569    | 8.92  | 589    | 9.57  | 608   | 10.22 |
| 500  | 16.1 | 477    | 7.29  | 498    | 7.85  | 518    | 8.45  | 538    | 9.05  | 556    | 9.63  | 574    | 10.21 | 592    | 10.78 | 608   | 11.35 |
| 550  | 17.7 | 486    | 8.55  | 507    | 9.16  | 526    | 9.77  | 546    | 10.38 | 564    | 11.05 | 582    | 11.70 | 600    | 12.35 | 616   | 13.00 |
| 600  | 19.3 | 497    | 9.92  | 517    | 10.61 | 536    | 11.29 | 554    | 11.96 | 573    | 12.62 | 590    | 13.27 | 608    | 14.00 | 624   | 14.72 |
| 650  | 20.9 | 509    | 11.59 | 528    | 12.25 | 547    | 12.95 | 565    | 13.69 | 582    | 14.42 | 599    | 15.15 | 616    | 15.87 | 633   | 16.57 |
| 700  | 22.5 | 526    | 13.61 | 540    | 14.16 | 558    | 14.89 | 576    | 15.58 | 593    | 16.37 | 609    | 17.17 | 626    | 17.95 | 642   | 18.73 |
| 750  | 24.1 | 553    | 16.25 | 561    | 16.62 | 570    | 17.03 | 588    | 17.83 | 604    | 18.59 | 620    | 19.32 | 636    | 20.19 | 652   | 21.05 |
| 800  | 25.7 | 580    | 19.23 | 588    | 19.63 | 596    | 20.02 | 603    | 20.40 | 616    | 21.09 | 632    | 21.92 | 648    | 22.73 | 663   | 23.52 |
| 850  | 27.3 | 608    | 22.57 | 616    | 23.00 | 623    | 23.42 | 630    | 23.84 | 637    | 24.25 | 645    | 24.68 | 660    | 25.58 | 675   | 26.46 |
| 900  | 29.0 | 636    | 26.28 | 643    | 26.74 | 650    | 27.21 | 657    | 27.66 | 664    | 28.10 | 671    | 28.54 | 678    | 28.97 | 687   | 29.59 |
| 950  | 30.6 | 659    | 30.08 | 671    | 30.89 | 678    | 31.38 | 685    | 31.87 | 691    | 32.35 | 698    | 32.83 | 704    | 33.29 | 711   | 33.75 |
| 1000 | 32.2 | 680    | 34.02 | 694    | 35.11 | 706    | 35.98 | 712    | 36.51 | 719    | 37.02 | 725    | 37.53 | 731    | 38.03 | 738   | 38.53 |
| 1100 | 35.4 |        |       | 737    | 44.19 | 750    | 45.42 | 763    | 46.61 | 774    | 47.71 | 780    | 48.29 | 786    | 48.87 | 792   | 49.43 |
| 1200 | 38.6 |        |       |        |       |        |       | 805    | 57.51 | 817    | 58.85 | 829    | 60.16 | 840    | 61.44 | 848   | 62.28 |
| 1300 | 41.8 |        |       |        |       |        |       |        |       | 860    | 71.52 | 871    | 73.00 | 882    | 74.45 | 893   | 75.88 |
| 1400 | 45.0 |        |       |        |       |        |       |        |       |        |       |        |       |        |       | 936   | 90.80 |

| CMM  | OV   | 85mmAq |       | 90mmAq |       | 95mmAq |       | 100mmAq |       | 110mmAq |       | 120mmAq |       | 130mmAq |       | 140mmA |       |
|------|------|--------|-------|--------|-------|--------|-------|---------|-------|---------|-------|---------|-------|---------|-------|--------|-------|
|      |      | RPM    | BkW   | RPM    | BkW   | RPM    | BkW   | RPM     | BkW   | RPM     | BkW   | RPM     | BkW   | RPM     | BkW   | RPM    | BkW   |
| 450  | 14.5 | 627    | 10.87 | 645    | 11.52 | 663    | 12.18 | 680     | 12.84 | 713     | 14.15 | 745     | 15.47 | 775     | 16.79 | 804    | 18.19 |
| 500  | 16.1 | 627    | 12.02 | 645    | 12.75 | 662    | 13.47 | 680     | 14.19 | 713     | 15.65 | 745     | 17.10 | 775     | 18.56 | 804    | 20.03 |
| 550  | 17.7 | 633    | 13.63 | 648    | 14.26 | 664    | 14.88 | 680     | 15.55 | 713     | 17.14 | 745     | 18.73 | 775     | 20.33 | 804    | 21.93 |
| 600  | 19.3 | 641    | 15.44 | 656    | 16.14 | 672    | 16.84 | 687     | 17.54 | 716     | 18.91 | 744     | 20.36 | 775     | 22.10 | 804    | 23.83 |
| 650  | 20.9 | 649    | 17.32 | 664    | 18.11 | 680    | 18.89 | 695     | 19.66 | 724     | 21.19 | 751     | 22.69 | 778     | 24.17 | 804    | 25.73 |
| 700  | 22.5 | 657    | 19.51 | 673    | 20.28 | 688    | 21.03 | 703     | 21.88 | 732     | 23.56 | 759     | 25.22 | 786     | 26.86 | 811    | 28.47 |
| 750  | 24.1 | 667    | 21.89 | 682    | 22.73 | 697    | 23.57 | 711     | 24.40 | 740     | 26.03 | 767     | 27.85 | 793     | 29.65 | 819    | 31.42 |
| 800  | 25.7 | 678    | 24.45 | 692    | 25.36 | 707    | 26.27 | 721     | 27.15 | 749     | 28.95 | 775     | 30.69 | 802     | 32.53 | 827    | 34.47 |
| 850  | 27.3 | 689    | 27.32 | 703    | 28.15 | 717    | 29.14 | 731     | 30.11 | 758     | 32.03 | 784     | 33.93 | 810     | 35.81 | 835    | 37.64 |
| 900  | 29.0 | 701    | 30.54 | 715    | 31.47 | 729    | 32.37 | 742     | 33.26 | 769     | 35.31 | 794     | 37.35 | 819     | 39.36 | 844    | 41.37 |
| 950  | 30.6 | 17     | 34.20 | 27     | 34.97 | 41     | 35.98 | 754     | 36.96 | 780     | 38.85 | 805     | 40.97 | 830     | 43.14 | 853    | 45.26 |
| 1000 | 32.2 | 744    | 39.01 | 750    | 39.49 | 756    | 39.97 | 766     | 40.85 | 792     | 42.94 | 816     | 44.95 | 840     | 47.10 | 864    | 49.40 |
| 1100 | 35.4 | 798    | 49.99 | 804    | 50.54 | 809    | 51.08 | 815     | 51.62 | 826     | 52.68 | 841     | 54.14 | 864     | 56.45 | 887    | 58.69 |

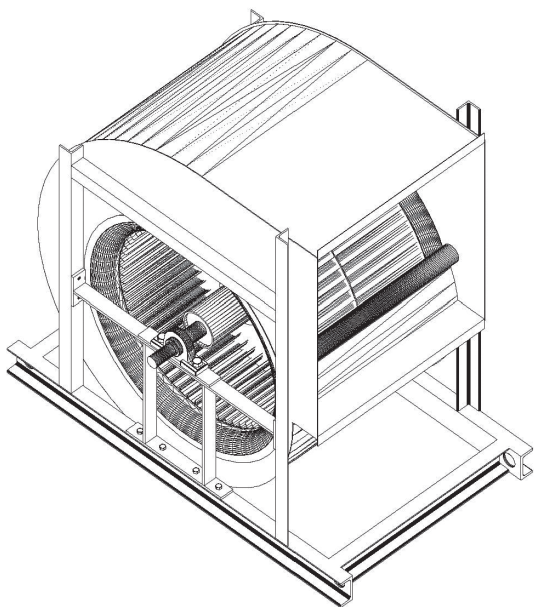
Performance certified is for installation type B - Free inlet, Ducted outlet.

Power rating (kW) does not include transmission losses.

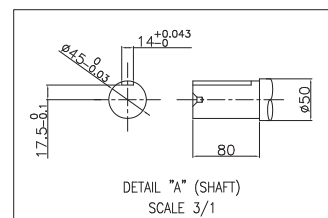
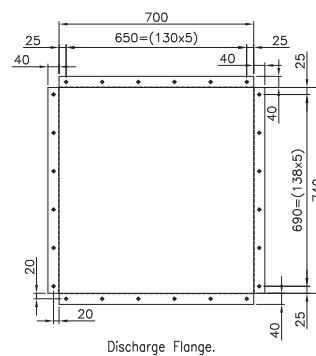
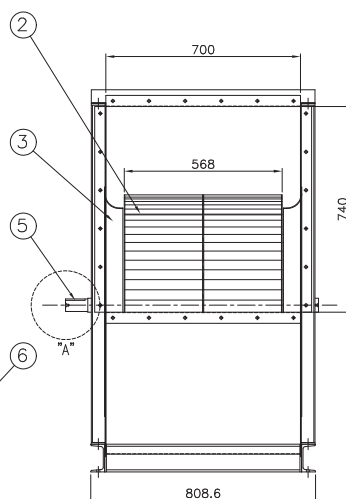
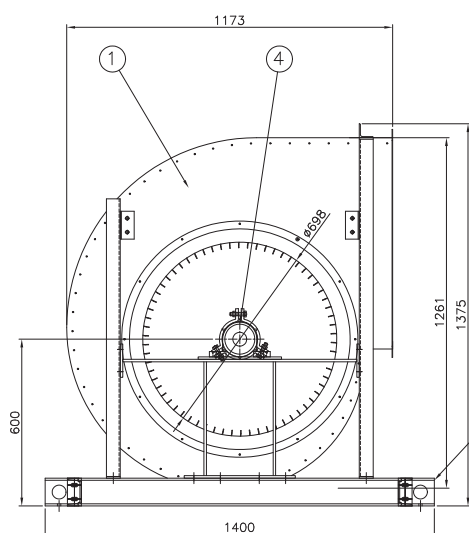
Performance ratings do not include the effects of appurtenances (accessories).

# CENTRIFUGAL FAN (YSF-Series)

## 📐 Lay-out Drawing



| NO | ITEM          | MATERIAL | Q'TY | REMARKS |
|----|---------------|----------|------|---------|
| 1  | Housing Ass'y | SHP1     | 1    |         |
| 2  | Wheel Ass'y   | SCP1     | 1    |         |
| 3  | Inlet Cone    | F.R.P    | 2    |         |
| 4  | Bearing       | STB2     | 2    |         |
| 5  | Shaft         | SM45C    | 1    |         |
| 6  | Fan Base      | SS400    | 1    |         |





**YM Tech co., Ltd**

Head Office / Factory

4-87, Sinchon-gil, Daedeok-myeon, Anseong-si, Gyeonggi-do, 17544, Korea

TEL : 031-676-2793 FAX : 031-676-2801 E-mail : ym2793@hanmail.net

YSF-Catalog-Ver.1.0 June 2023