

*We Care for Your Needs*

## CENTRIFUGAL FAN

SWB Series



**ENERGY TWIN CITY**  
A TWIN CITY FAN COMPANY

## TABLE OF CONTENTS

<b>GENERAL INFORMATION</b> .....	<b>03-04</b>
<b>CONSTRUCTION FEATURES</b> .....	<b>05</b>
<b>PERFORMANCE CHART</b> .....	<b>06</b>
<b>INSTALLATION AND MAINTENANCE</b> .....	<b>07-08</b>
<b>FAN DATA</b> .....	<b>09-23</b>
<b>OUTLET FLANGE</b> .....	<b>24-37</b>
<b>SWB SERIES FAN OPERATIONAL LIMITS</b> .....	<b>38</b>

# CENTRIFUGAL VENTILATORS

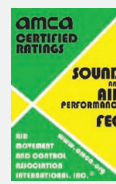
## SWB Series

### OVERVIEW

The SWB Series of centrifugal fans with backward blade were developed with advanced technologies. They are licensed to bear the AMCA Seal for air performance, sound, and FEG. The SWB Series includes 15 models as described in this catalogue. The volume flow of the SWB Series ranges from 1,000 m<sup>3</sup>/h to 120,000 m<sup>3</sup>/h, the total pressure ranges from 200Pa to 3,000 Pa. Some of the features and characteristics of these fans are: forward impeller blades, a wide range of applications, high efficiency, low noise, and low power consumption. These fans are ideal for use in central air-conditioning systems, in purifiers. They are also suitable for use in a variety of other ventilation.

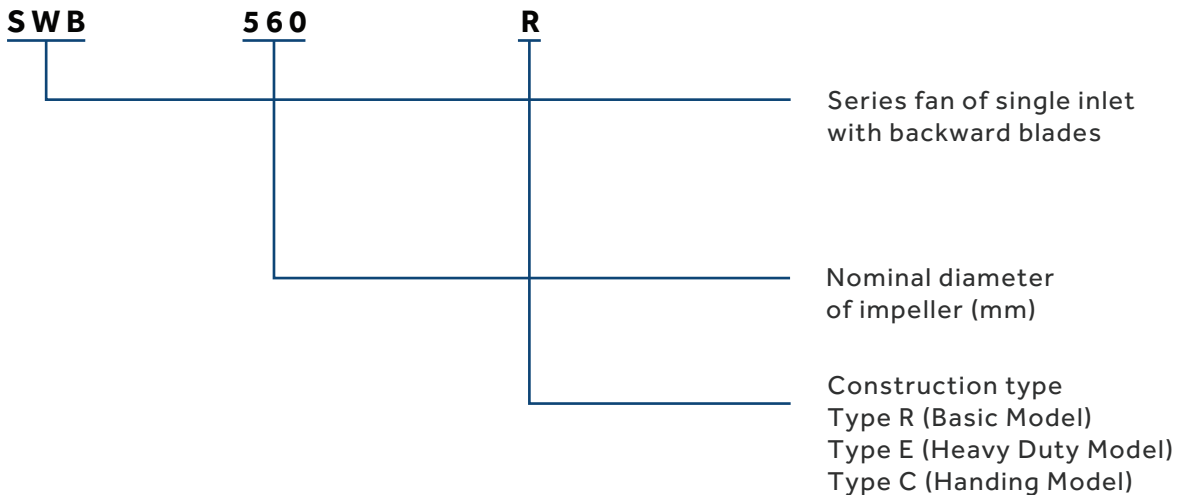
### CERTIFICATIONS

AMCA Sound & Air Performance, CE (IEC60335) EMC & RoHS



Energy Industrial Company L.L.C. certifies that the SWB Series fans shown herein are licensed to bear the AMCA Seal. The ratings shown are based on tests and procedures performed in accordance with AMCA Publication 211 and AMCA Publication 311 and comply with the requirements of the AMCA Certified Ratings Program. All the Centrifugal Fans described herein are licensed to bear the AMCA Seal, and their certified ratings are shown on pages 09 through 23.

### NOMENCLATURE



### ➤ PRODUCT FEATURES

#### ROTATION

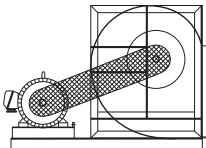
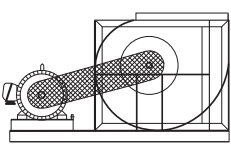
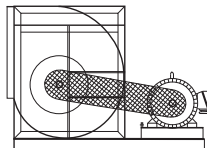
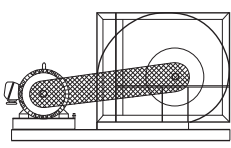
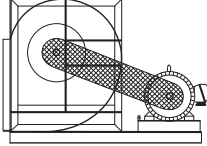
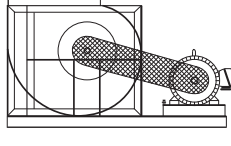
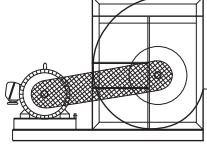
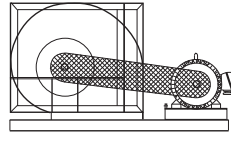
SWB series fans have two direction of rotations, left-hand rotation (LG) and right-hand rotation (RD); Viewing from drive side, if the impeller rotates clockwise, it is left hand (LG) rotation. If the impeller rotates counter clockwise, it is right-hand (RD).

# GENERAL INFORMATION

## SWB SERIES CENTRIFUGAL FAN

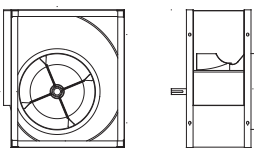

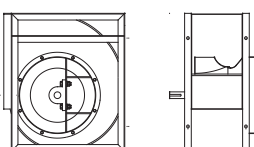

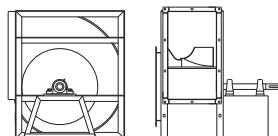

### DISCHARGE DIRECTION

As shown in Fig1, SWB Series fans can be constructed in four discharge directions: 0°, 90°, 180°, and 270°.

	0°	90°	180°	270°
LG Left Hand				
RD Right Hand				

### TYPE OF CONSTRUCTION

As shown in Fig 2, SWB series fans can be divided into category R, E, C.

Fan Type	Fan Size	Fan Diagram	Bearing Type
TYPE R	280-710		
TYPE E	280-1000		
TYPE C	280-1400		

### HOUSINGS

The housing is made of hot galvanized steel sheet. The side plates include inlet cones that are designed with the best aerodynamics for inlet condition. The scroll is fixed to the side plates by spot welding or "Pittsburg seam locking."

### IMPELLER

Backwards curved airfoil impeller is constructed of high-grade cold-roll steel sheets, according to the three-dimensional flow theory, the impeller is fixed on the center plate and on the end ring with welding by high precision laser cutting machine. The unity of the impeller is spraying by plastic. All impellers are balanced to ANSI/AMCA Standard 204-05.

### FRAME

The frames for type R construction are made of galvanized steel angle iron bars. The cutting and bending of the frame parts, as well as the TOX connections, are formed with the use of toolings to ensure the high accuracy and the rigidity of the frames; The frames for E and C constructions are welded by angle steel and flat steel with polyester coating in order to ensure sufficient rigidity and strength.

### BEARINGS

Ball bearings are used in all of the SWB Series fans. These are high-quality bearings and selected to minimize the fan noise levels. The bearings are pre-lubricated, sealed, and self-centering. For type R constructions, the bearings are supplied with lubrication fittings. For type E and C constructions, the bearings are supplied with radial bearing.

### SHAFT

The shafts are made of 40 Cr carbon steel bars. The shafts are rough machined and then stress relieved with heat treatment before final machining. The shaft diameters are machined to very accurate tolerance levels, and they are fully checked to ensure precision fit. Each shaft is made turned, ground and polished. They are coated after assembly to provide corrosion resistance. Shaft size should be designed to meet the first critical speed of at least fan maximum running speed 1.4 times.

### OUTLET FLANGE

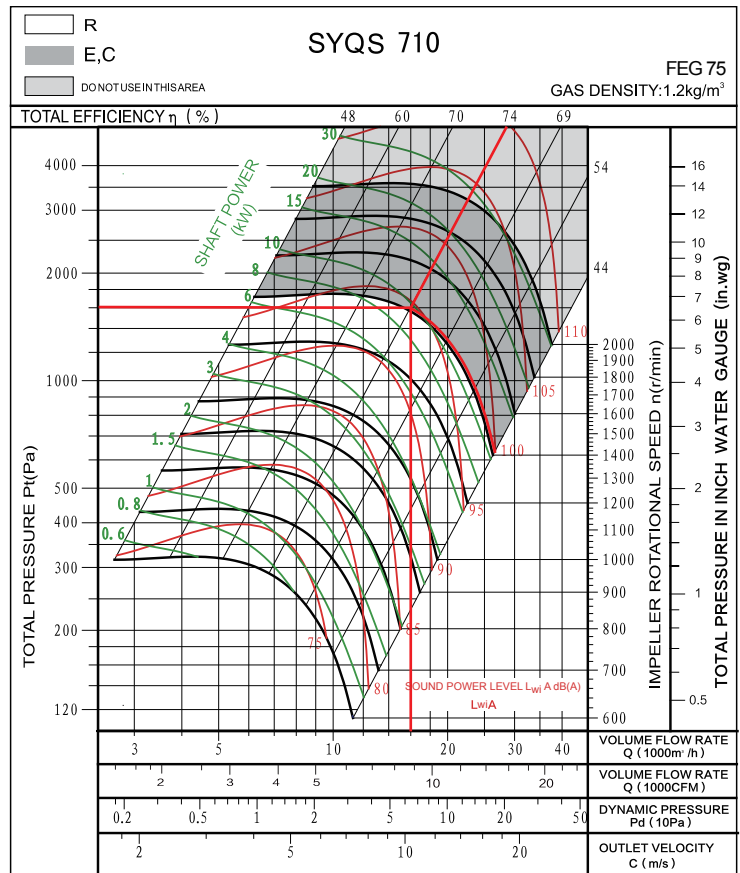
The inlet flange is made of high-grade cold-rolling sheet with polyester coating. The outlet flange is made of galvanized steel. The connections of the flange components to the scroll are made using a TOX non-welding process. This maintains a good flange appearance while also providing sufficient strength and rigidity.

# PERFORMANCE CHART

SWB SERIES CENTRIFUGAL FAN

## ► FAN PERFORMANCE CURVE

Type	SWB710K
Volume	$q_v=16000\text{m}^3/\text{h}$
Total Pressure	$P_{tF}=1600\text{Pa}$
Dynamic Pressure	$P_{dF}=64\text{Pa}$
Outlet Velocity	$C=10.35\text{m/s}$
Fan Speed	$n=1430\text{r/min}$
Shaft Power	$P_{sh}=9.5\text{KW}$
A Sound Power Level	$L_{wA}=94\text{dB(A)}$
Total Efficiency	$\eta_{tF}=74\%$



## MOTOR SELECTION

The power ( $P_{sh}$ ) on the performance chart refers to the shaft power of the fan.

The rated power of the drive motor equals the total required shaft input multiplied by the safety factor :  $P_{sh.p}=P_{sh} \times k \div \eta_{me}$  The value of mechanical drive efficiency can be obtained from Table 1.

The required safety factors is provided in Table 2.

Drive type	$\eta_{me}$
Motor Direct Driven	1
Coupling Direct Driven	0.98
V-Blet Driven	0.95

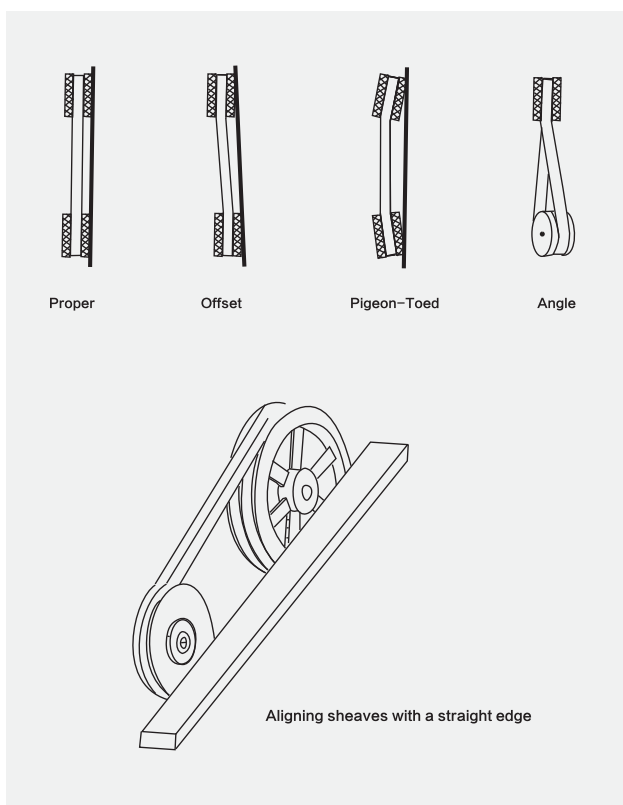
Table 1

Power of electric motor (Kw)	Value k
$\leq 0.75\text{Kw}$	1.3
$\leq 2.2\text{Kw}$	1.2
$\leq 7.5\text{Kw}$	1.15
$\geq 11\text{Kw}$	1.1

Table 2

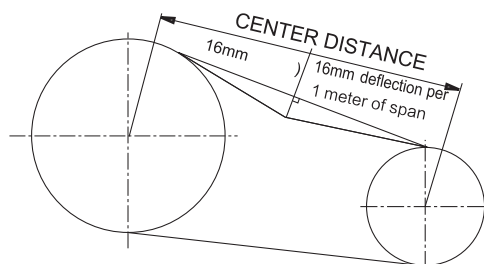
### V-BELT DRIVE INSTALLATION

- Remove the protective coating from the ends of the fan shaft and ensure that the shaft ends are free of nick and burrs.
- Check fan and motor shafts for alignment.
- The center distance must be controlled as  $0.7(d1+d2) < a < 2(d1+d2)$ , The belt speed of forward curve fan should be more than 10m/s, but less than 15m/s, ( $10 < v < 15\text{m/s}$ ). The belt speed of backward curve fan should be more than 25m/s, but less than 35m/s ( $25 < v < 35\text{m/s}$ ).
- Slide sheaves on to the shafts, Do not hammer the sheaves on to the shafts with force as this may result in bearing damage.
- Align fan and motor sheaves with a straight-edge, and tighten the sheaves.
- Place belts over the sheaves with care. Do not bend or squeeze the belts or it might get damaged.
- Adjust the belt tension until the belts appear snug. Run the unit for a few minutes and allow the belts to set properly.
- Switch off the fan, adjust the belt tension by moving the motor base. When in operation, the tight side of the belts should be in a straight line from sheave to sheave and there should be a slight bow on the slack side.



### BELT TENSION

A proper level of belt tension is required in order to obtain a satisfactory belt life. If the belt tension level is too high, excessive loads will be imposed on the belts and the bearing, and this will reduce the lives of both of these components. If the belt tension level is too low, the belt will slip. Belt slippage generates a large amount of heat, and this heat will drastically reduce the life of a belt. Belt-tensioning gauges can be used to determine whether the belts are tensioned properly. A chart is normally supplied with the gauge which indicates the ranges of forces required to deflect the belts by a given amount to obtain the proper belt tension level. The required forces are based upon the center distance of the sheaves and the belt cross-section. The belts are properly tensioned when the forces required to deflect the belt are within the specified range, see Fig 4 and Table 3. If a belt-tensioning gauge is not available, then the belt should be tightened just enough so that the belt does not squeal when the ventilator is started. A very short period of noise during the starting of a ventilator is allowable, but a squeal lasting several seconds or longer is not acceptable. After tensioning the belts and before starting the fan, check to make sure that the sheaves are properly aligned. Realign the sheaves if necessary. Note that new belts may stretch a little during initial use, so the belt tension level should be checked after a few days of operation.



Belt tension indicator applied to mid centre distance.

Belt Section	Force required to deflect belt 16mm per metre of span		
	Small Pulle/Diamter (mm)	Newtonian (N)	Kilogram force (Kgf)
SPZ	56-95	13-20	1.3-2.0
	100-140	20-25	2.0-2.5
SPA	80-132	25-35	2.5-3.6
	140-200	35-45	3.6-4.6
SPB	112-224	45-65	4.6-6.6
	236-315	65-85	6.6-8.7
SPC	224-335	85-115	8.7-11.7
	375-560	115-150	11.7-15.3
A	80-140	10-15	1.1-1.5
B	125-200	20-30	2.0-3.1

### BEARING LUBREICATION

The allowable period of time between lubrication of these bearings depends upon the operating speeds and temperatures of the bearing as well as on the type of lubrication. It is recommended to inspect the condition of the grease that is discharged from the bearings when new grease is added. If the discharged grease looks similar to the new grease,

then a longer period of time between lubrications is possible. If the discharged grease is much darker than the new grease, this indicates that the grease is being oxidized and more frequent lubrications of the bearings are required.

### INSTRUCTIONS

- When placing the order, it is necessary to state the type of fan, speed, air volume, air pressure, discharge direction, rotation direction, type of electric motor and its specifications.
- Prior to installation, the fan should be carefully inspected. Special care should be taken in checking the shaft, impeller and bearings. If there is an indication of any damage, the damaged parts should be repaired or replaced before the fan is installed or commissioned.
- The inside of the scroll and casing need to be checked to make sure that there are no foreign objects inside the housing, such as tools or loose parts.
- The rotational directions of the motor and impeller should be checked to ensure that they are in compliance with the specification and purchase orders.
- A flexible connector should be used between the fan outlet flange and its mating ductwork. The flex connector should not be over-stretched.
- Following the installation, the impeller should be turned by hand or with the use of a wrench to make sure that it turns freely without colliding with other parts of the fan. Once all this is done, the fan can be commissioned normally.
- The rated motor power as calculated herein might not be sufficient to drive the fan with an unrestricted discharge flow. Operating the fan with an unrestricted discharge outlet will result in flow rate that exceeds the specified fan capabilities. Such operation will quickly burn the motor and damage the fan. Great care must be taken in operating the fan to make sure that the maximum rated flows, as provided on the performance charts in this catalog, are not exceeded.
- The fan is limited for use in areas where air substances are non-corrosive, non-toxic and non-erosive and where dust particles are less than 150mg/m<sup>3</sup> with a temperature between -20°C and 85°C. Special care should be taken during transportation, load and unload.



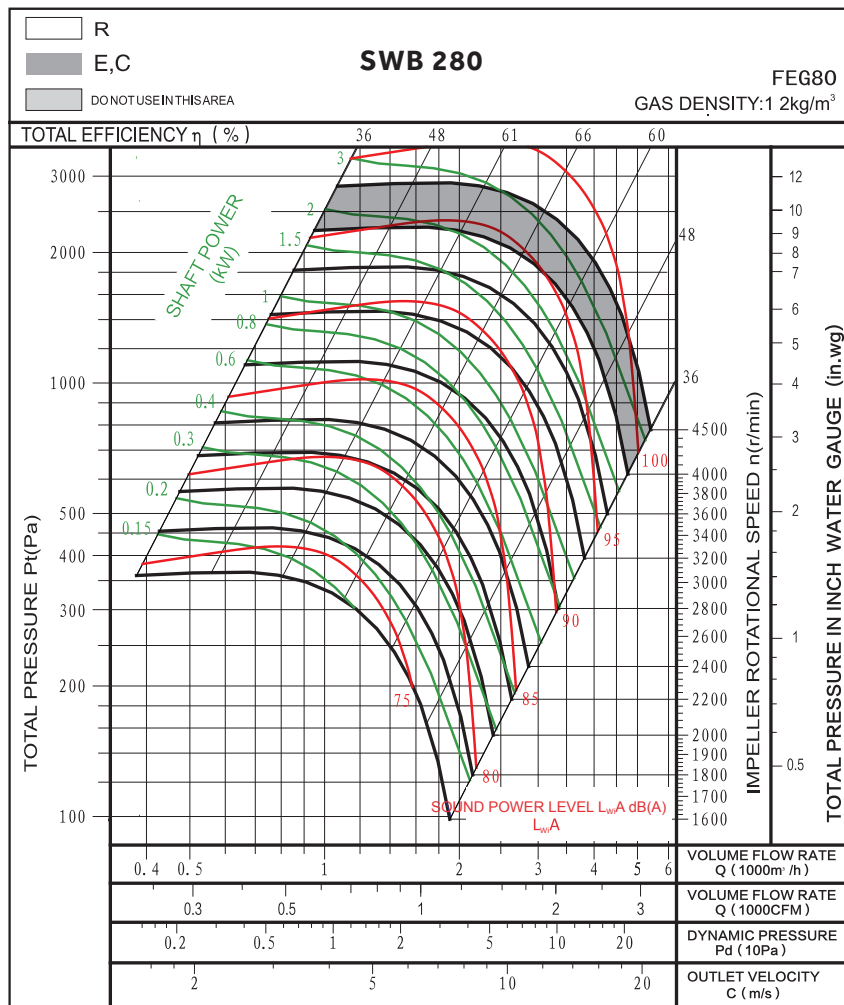
➤ SWB280 FEG80

TECHNICAL DATA

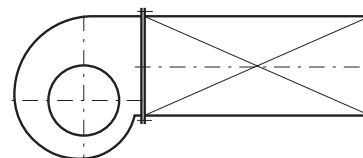
WHEEL DIAMETER	MOMENT OF INERTIA	FAN WEIGHT	SPEED LIMIT
D = 280 mm	J = 0.04kg.m <sup>2</sup>	m = 17 kg	n <sub>max</sub> = 4500 r/min

PERFORMANCE CURVE

Performance certified is for installation type B: free inlet, ducted outlet. Power rating (kW) does not include transmission losses. Performance ratings do not include the effects of appurtenances (accessories). The A-weighted sound ratings shown have been calculated per AMCA International Standard 301. Values shown are for inlet LWiA sound power levels for installation type B: free inlet, ducted outlet.



Measured in installation B according to AMCA Standard 210:



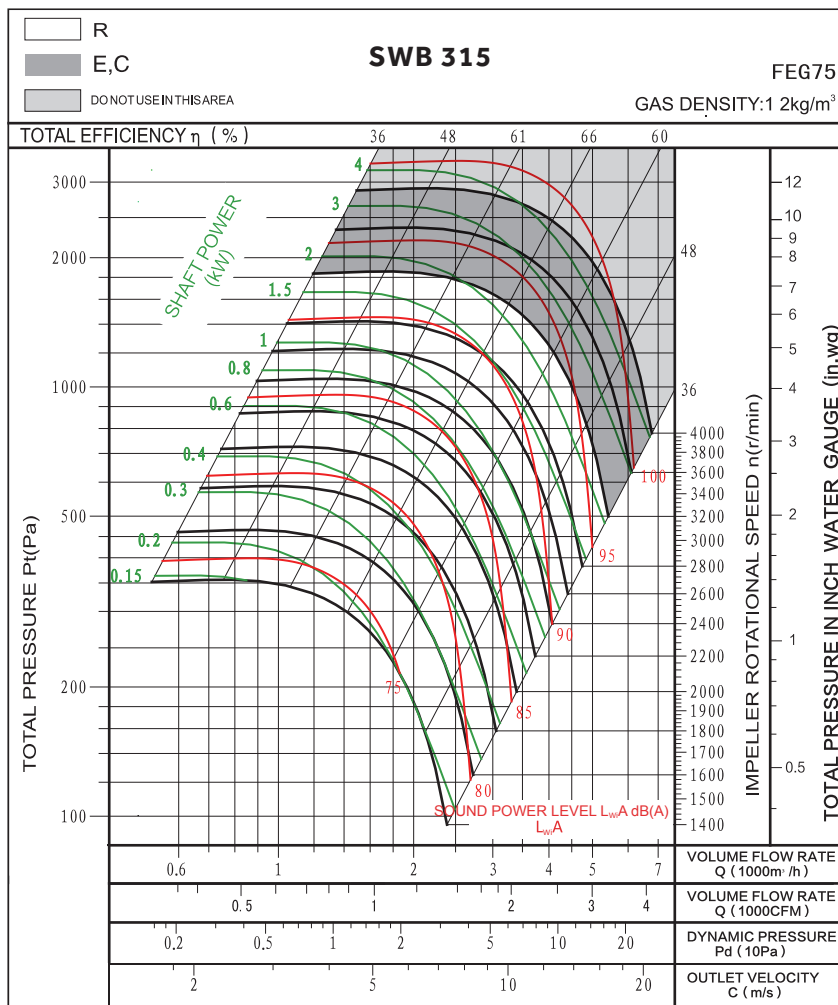
### ► SWB315 FEG75

#### TECHNICAL DATA

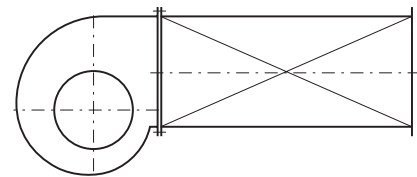
WHEEL DIAMETER	MOMENT OF INERTIA	FAN WEIGHT	SPEED LIMIT
D = 315 mm	J = 0.06kg.m <sup>2</sup>	m = 27 kg	n <sub>max</sub> = 4000 r/min

#### PERFORMANCE CURVE

Performance certified is for installation type B: free inlet, ducted outlet. Power rating (kW) does not include transmission losses. Performance ratings do not include the effects of appurtenances (accessories). The A-weighted sound ratings shown have been calculated per AMCA International Standard 301. Values shown are for inlet LWiA sound power levels for installation type B: free inlet, ducted outlet.



Measured in installation B according to AMCA Standard 210:



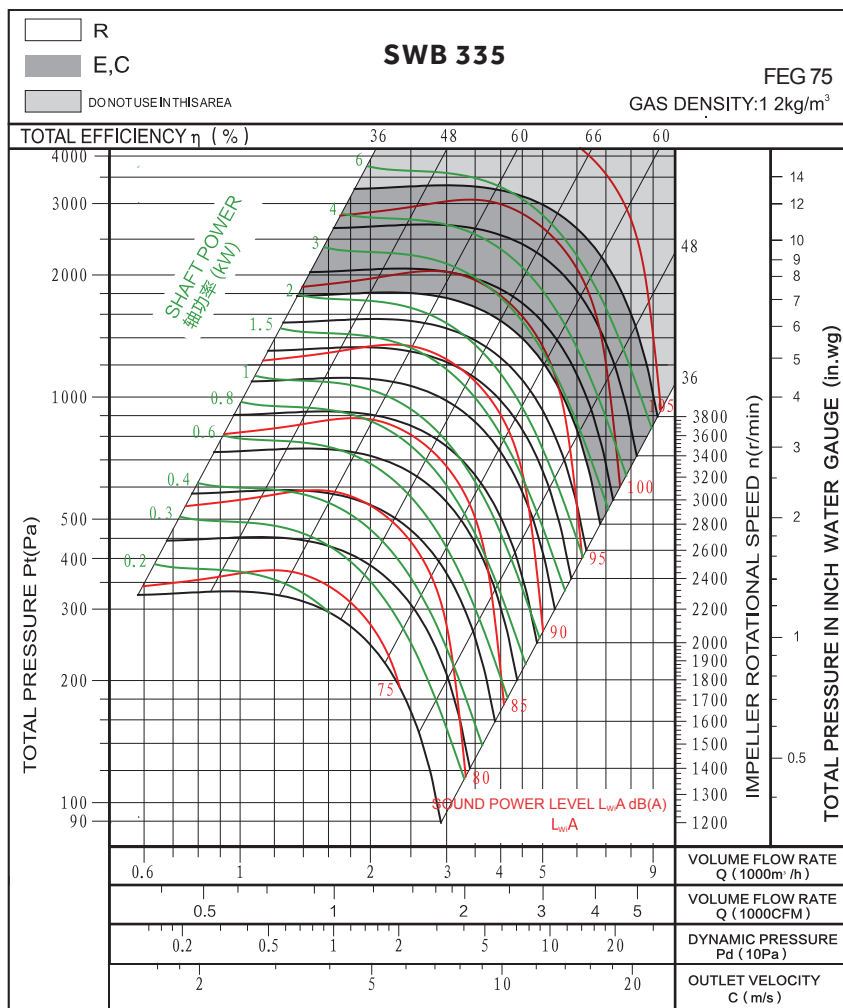
➤ SWB355 FEG75

TECHNICAL DATA

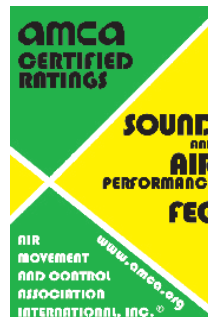
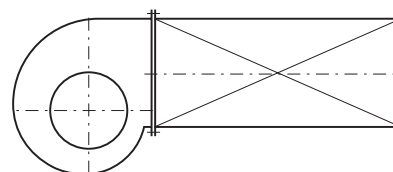
WHEEL DIAMETER	MOMENT OF INERTIA	FAN WEIGHT	SPEED LIMIT
D = 355 mm	J = 0.112kg.m <sup>2</sup>	m = 39kg	n <sub>max</sub> = 3800 r/min

PERFORMANCE CURVE

Performance certified is for installation type B: free inlet, ducted outlet. Power rating (kW) does not include transmission losses. Performance ratings do not include the effects of appurtenances (accessories). The A-weighted sound ratings shown have been calculated per AMCA International Standard 301. Values shown are for inlet LWiA sound power levels for installation type B: free inlet, ducted outlet.



Measured in installation B according to AMCA Standard 210:



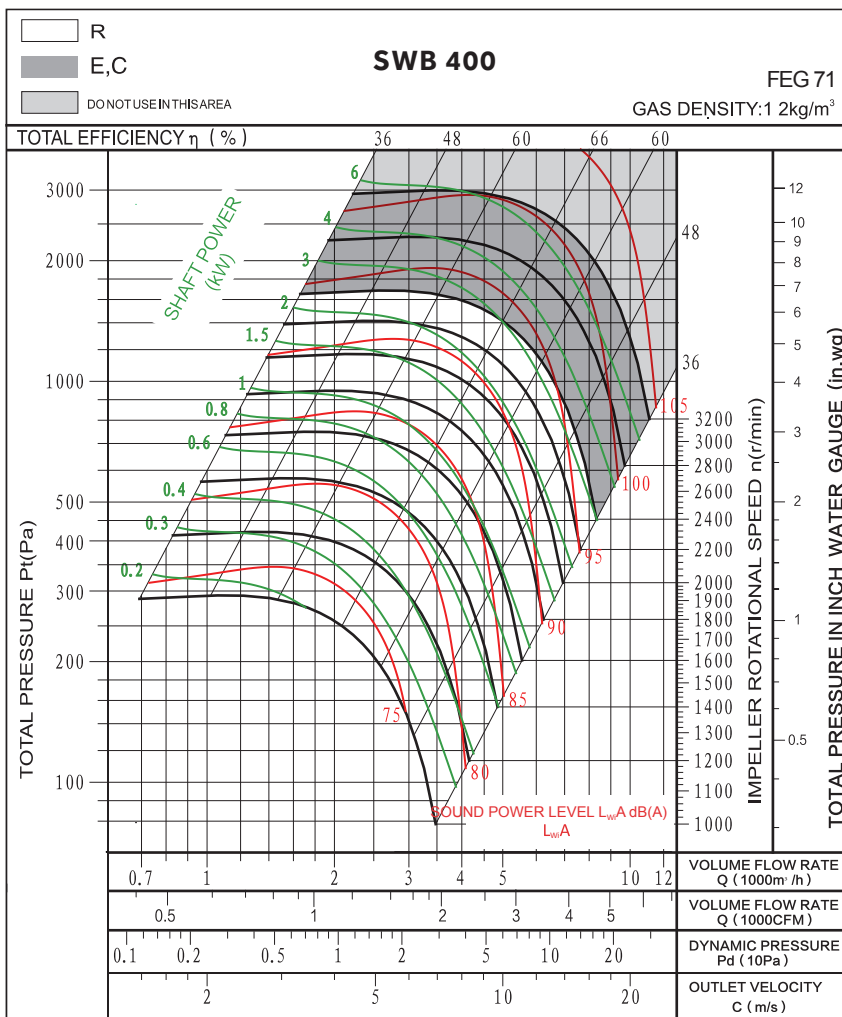
### ➤ SWB400 FEG71

#### TECHNICAL DATA

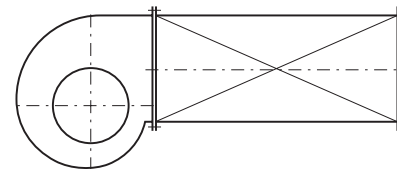
WHEEL DIAMETER	MOMENT OF INERTIA	FAN WEIGHT	SPEED LIMIT
D = 400 mm	J = 0.185kg.m <sup>2</sup>	m = 44 kg	n <sub>max</sub> = 3200 r/min

#### PERFORMANCE CURVE

Performance certified is for installation type B: free inlet, ducted outlet. Power rating (kW) does not include transmission losses. Performance ratings do not include the effects of appurtenances (accessories). The A-weighted sound ratings shown have been calculated per AMCA International Standard 301. Values shown are for inlet LWiA sound power levels for installation type B: free inlet, ducted outlet.



Measured in installation B according to AMCA Standard 210:



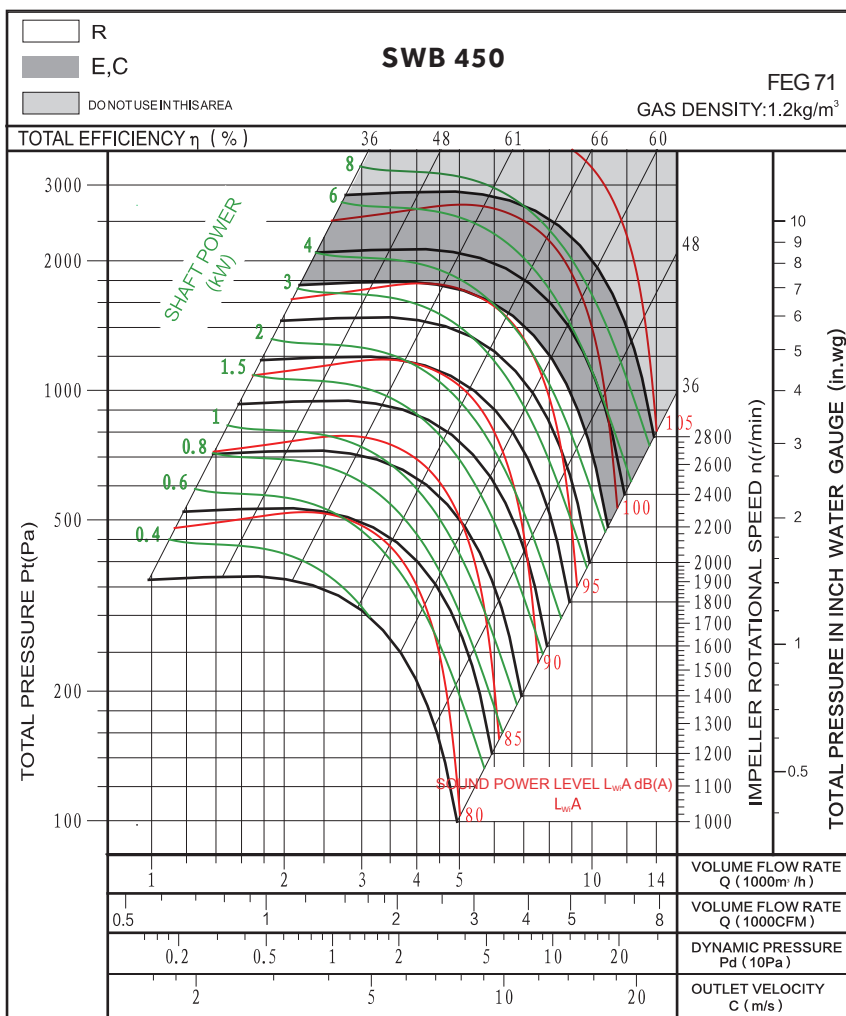
➤ SWB450 FEG71

TECHNICAL DATA

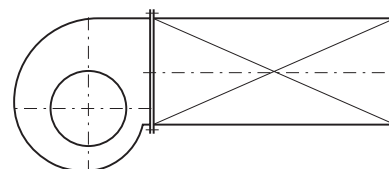
WHEEL DIAMETER	MOMENT OF INERTIA	FAN WEIGHT	SPEED LIMIT
D = 450 mm	J = 0.06kg.m <sup>2</sup>	m = 55 kg	n <sub>max</sub> = 2800 r/min

PERFORMANCE CURVE

Performance certified is for installation type B: free inlet, ducted outlet. Power rating (kW) does not include transmission losses. Performance ratings do not include the effects of appurtenances (accessories). The A-weighted sound ratings shown have been calculated per AMCA International Standard 301. Values shown are for inlet LWiA sound power levels for installation type B: free inlet, ducted outlet.



Measured in installation B according to AMCA Standard 210:



# FAN DATA

## SWB SERIES CENTRIFUGAL FAN

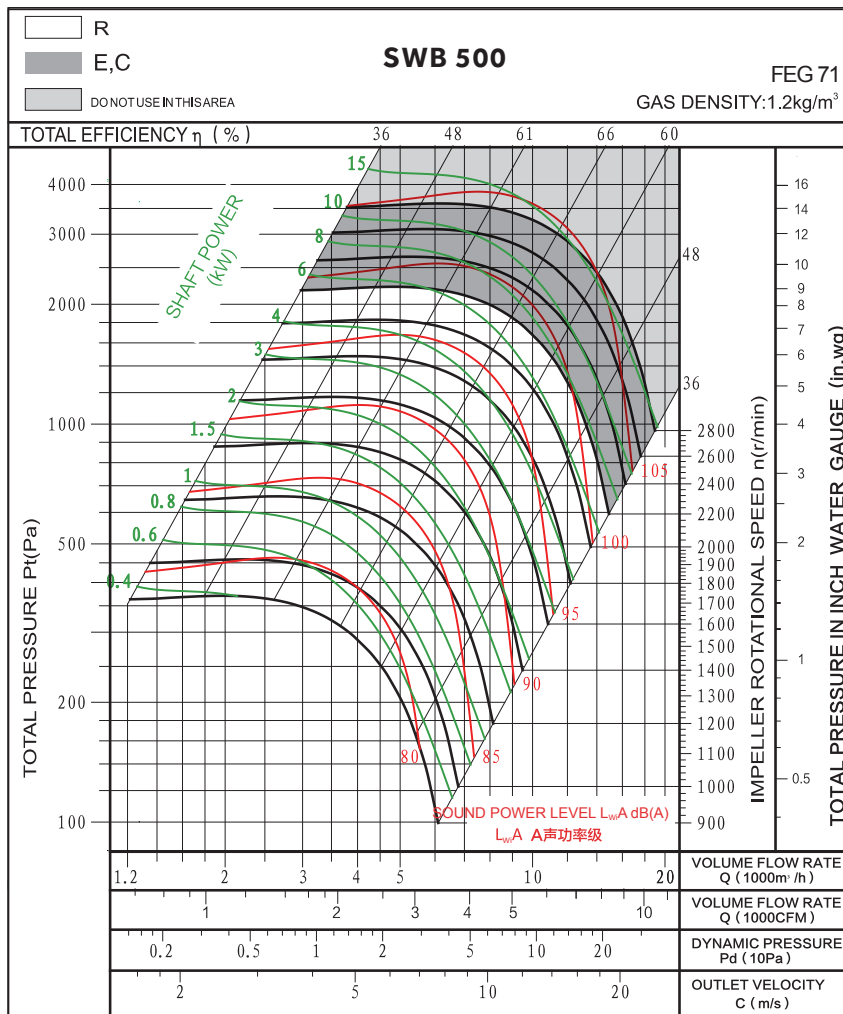
### ➤ SWB500 FEG71

#### TECHNICAL DATA

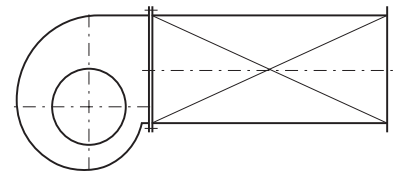
WHEEL DIAMETER	MOMENT OF INERTIA	FAN WEIGHT	SPEED LIMIT
D = 500 mm	J = 0.49 kg.m <sup>2</sup>	m = 70 kg	n <sub>max</sub> = 2800 r/min

#### PERFORMANCE CURVE

Performance certified is for installation type B: free inlet, ducted outlet. Power rating (kW) does not include transmission losses. Performance ratings do not include the effects of appurtenances (accessories). The A-weighted sound ratings shown have been calculated per AMCA International Standard 301. Values shown are for inlet LWiA sound power levels for installation type B: free inlet, ducted outlet.



Measured in installation B according to AMCA Standard 210:



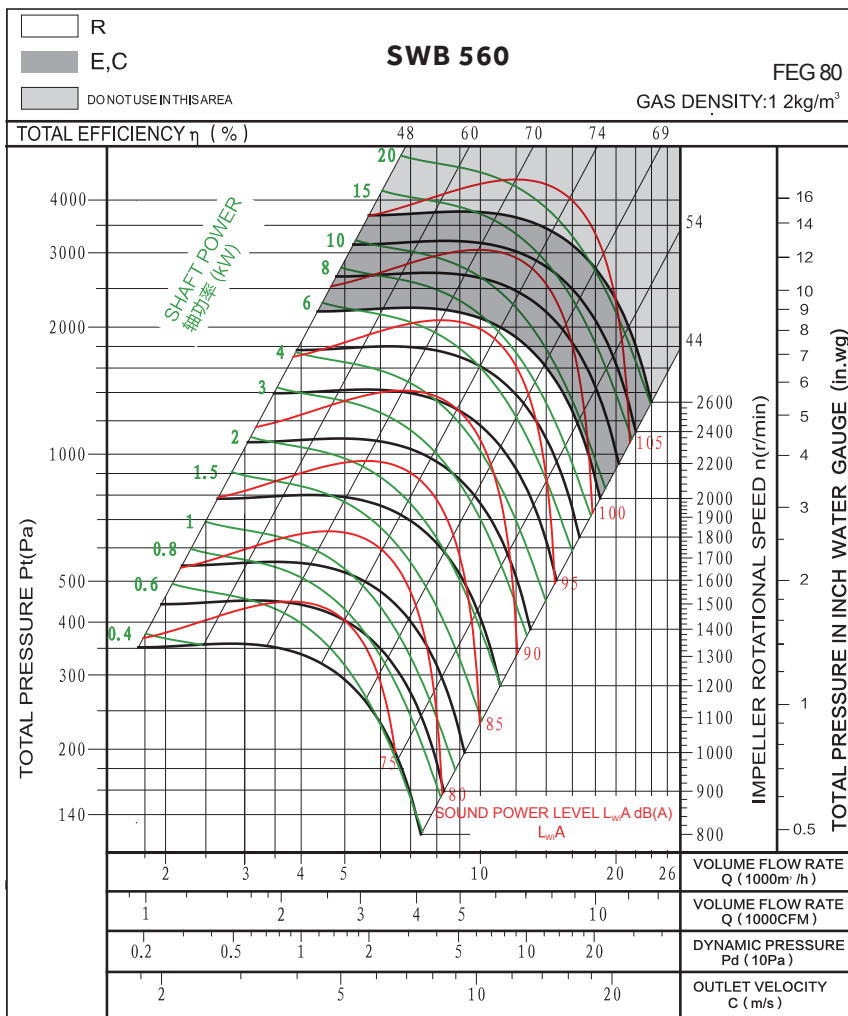
➤ SWB560 FEG80

TECHNICAL DATA

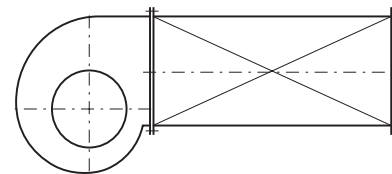
WHEEL DIAMETER	MOMENT OF INERTIA	FAN WEIGHT	SPEED LIMIT
D = 560 mm	J = 0.78 kg.m <sup>2</sup>	m = 110 kg	n <sub>max</sub> = 2600 r/min

PERFORMANCE CURVE

Performance certified is for installation type B: free inlet, ducted outlet. Power rating (kW) does not include transmission losses. Performance ratings do not include the effects of appurtenances (accessories). The A-weighted sound ratings shown have been calculated per AMCA International Standard 301. Values shown are for inlet LWiA sound power levels for installation type B: free inlet, ducted outlet.



Measured in installation B according to AMCA Standard 210:



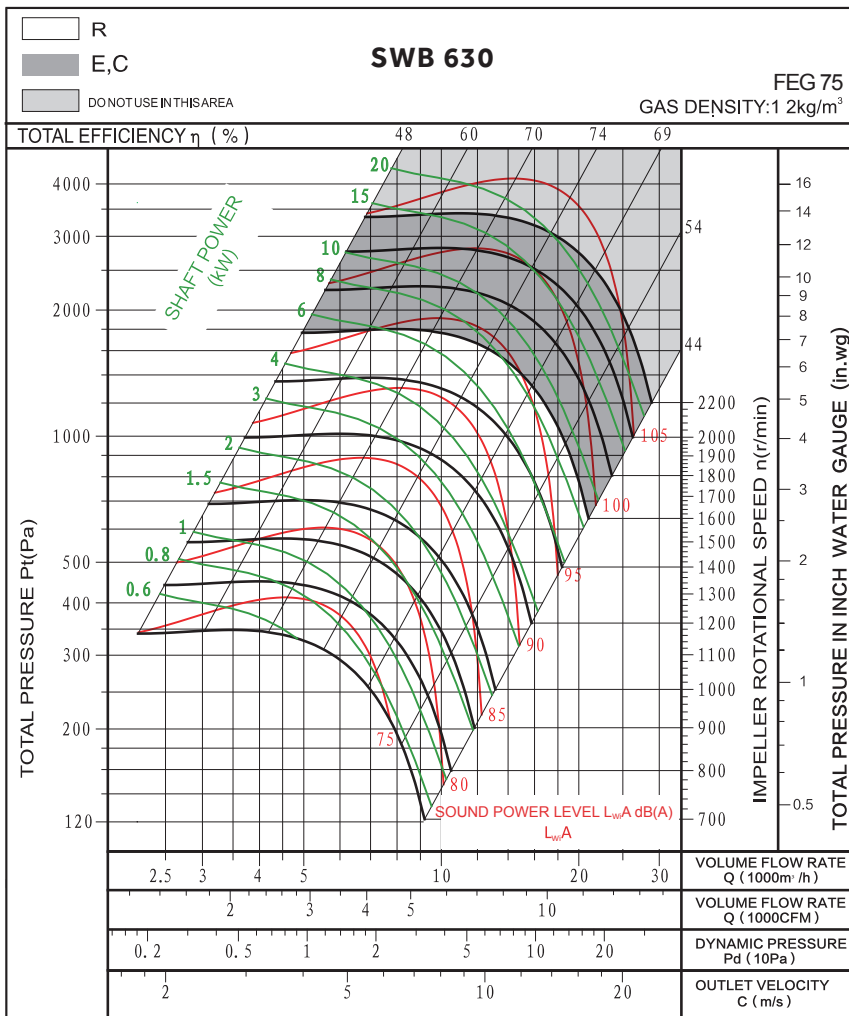
### ➤ SWB630 FEG75

#### TECHNICAL DATA

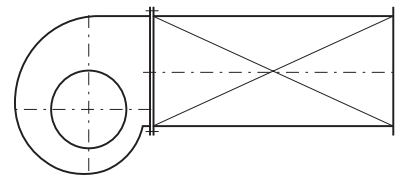
WHEEL DIAMETER	MOMENT OF INERTIA	FAN WEIGHT	SPEED LIMIT
D = 630 mm	J = 1.28 kg.m <sup>2</sup>	m = 125 kg	n <sub>max</sub> = 2200 r/min

#### PERFORMANCE CURVE

Performance certified is for installation type B: free inlet, ducted outlet. Power rating (kW) does not include transmission losses. Performance ratings do not include the effects of appurtenances (accessories). The A-weighted sound ratings shown have been calculated per AMCA International Standard 301. Values shown are for inlet LWiA sound power levels for installation type B: free inlet, ducted outlet.



Measured in installation B according to AMCA Standard 210:





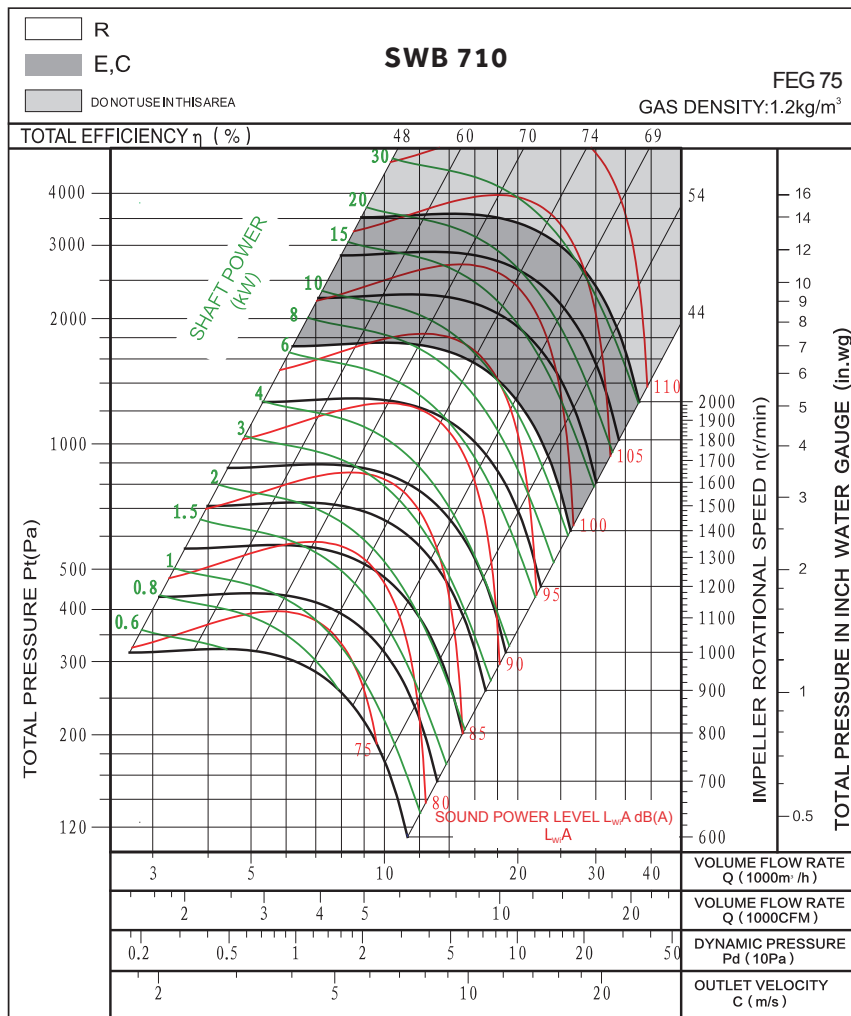
➤ SWB710 FEG75

TECHNICAL DATA

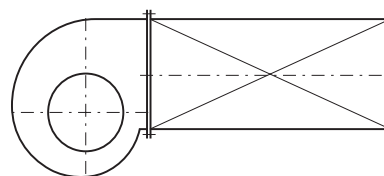
WHEEL DIAMETER	MOMENT OF INERTIA	FAN WEIGHT	SPEED LIMIT
D = 560 mm	J = 0.78 kg.m <sup>2</sup>	m = 110 kg	n <sub>max</sub> = 2600 r/min

PERFORMANCE CURVE

Performance certified is for installation type B: free inlet, ducted outlet. Power rating (kW) does not include transmission losses. Performance ratings do not include the effects of appurtenances (accessories). The A-weighted sound ratings shown have been calculated per AMCA International Standard 301. Values shown are for inlet LWiA sound power levels for installation type B: free inlet, ducted outlet.T



Measured in installation B according to AMCA Standard 210:



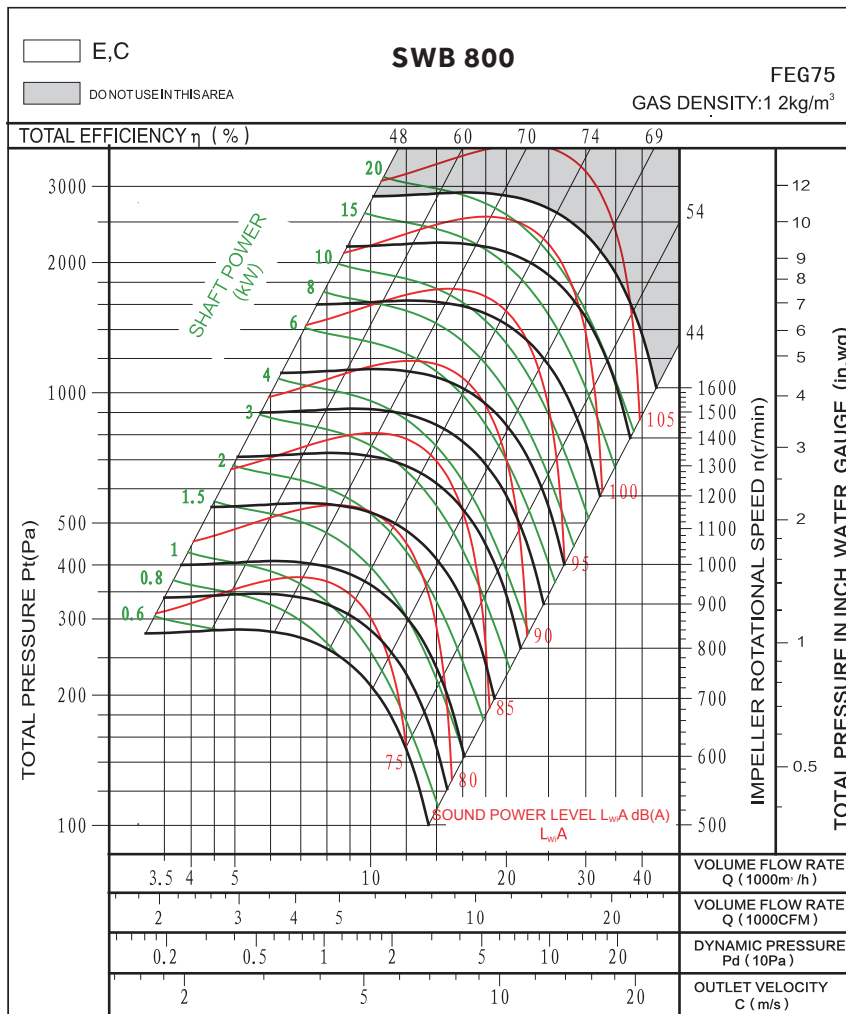
### ➤ SWB800 FEG75

#### TECHNICAL DATA

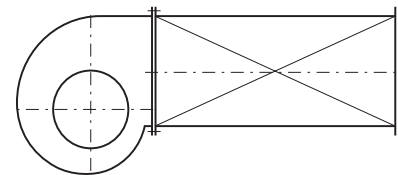
WHEEL DIAMETER	MOMENT OF INERTIA	FAN WEIGHT	SPEED LIMIT
D = 800 mm	J = 5.09kg.m <sup>2</sup>	m = 245 kg	n <sub>max</sub> = 1400 r/min

#### PERFORMANCE CURVE

Performance certified is for installation type B: free inlet, ducted outlet. Power rating (kW) does not include transmission losses. Performance ratings do not include the effects of appurtenances (accessories). The A-weighted sound ratings shown have been calculated per AMCA International Standard 301. Values shown are for inlet LWiA sound power levels for installation type B: free inlet, ducted outlet.



Measured in installation B according to AMCA Standard 210:



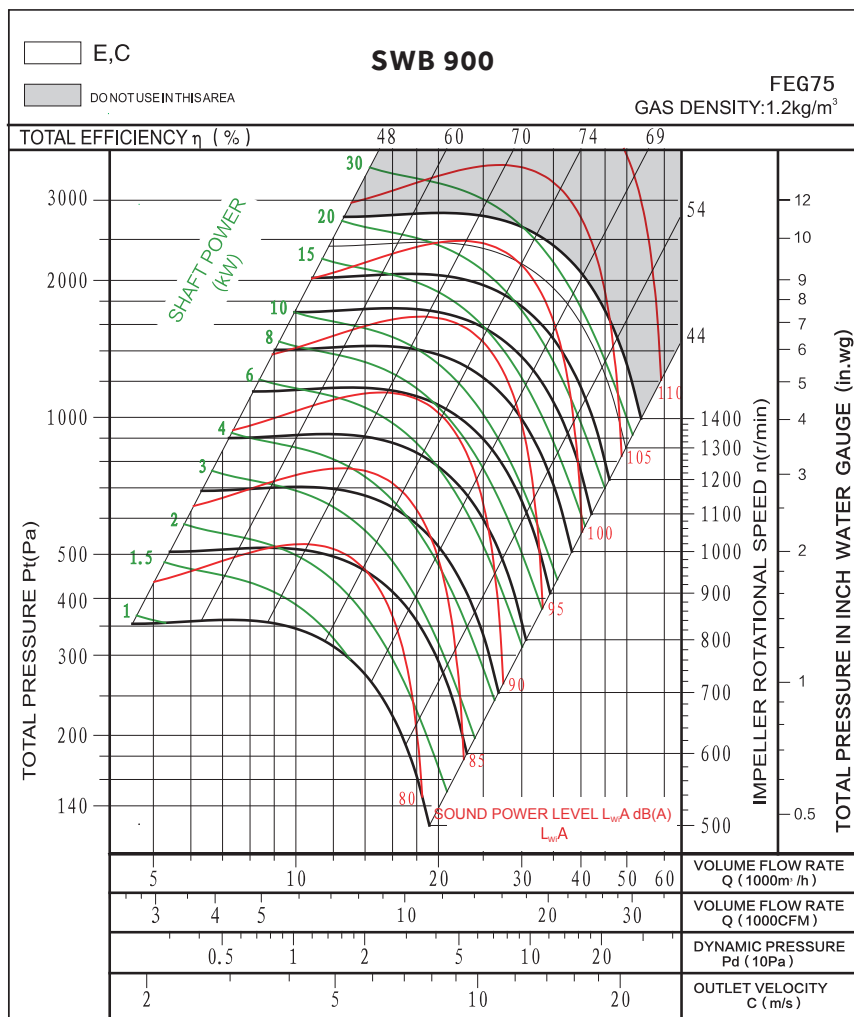
➤ SWB900 FEG75

TECHNICAL DATA

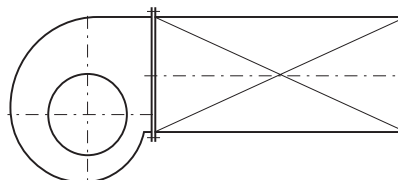
WHEEL DIAMETER	MOMENT OF INERTIA	FAN WEIGHT	SPEED LIMIT
D = 900 mm	J = 7.59kg.m <sup>2</sup>	m = 350 kg	n <sub>max</sub> = 1400 r/min

PERFORMANCE CURVE

Performance certified is for installation type B: free inlet, ducted outlet. Power rating (kW) does not include transmission losses. Performance ratings do not include the effects of appurtenances (accessories). The A-weighted sound ratings shown have been calculated per AMCA International Standard 301. Values shown are for inlet LWiA sound power levels for installation type B: free inlet, ducted outlet.



Measured in installation B according to AMCA Standard 210:



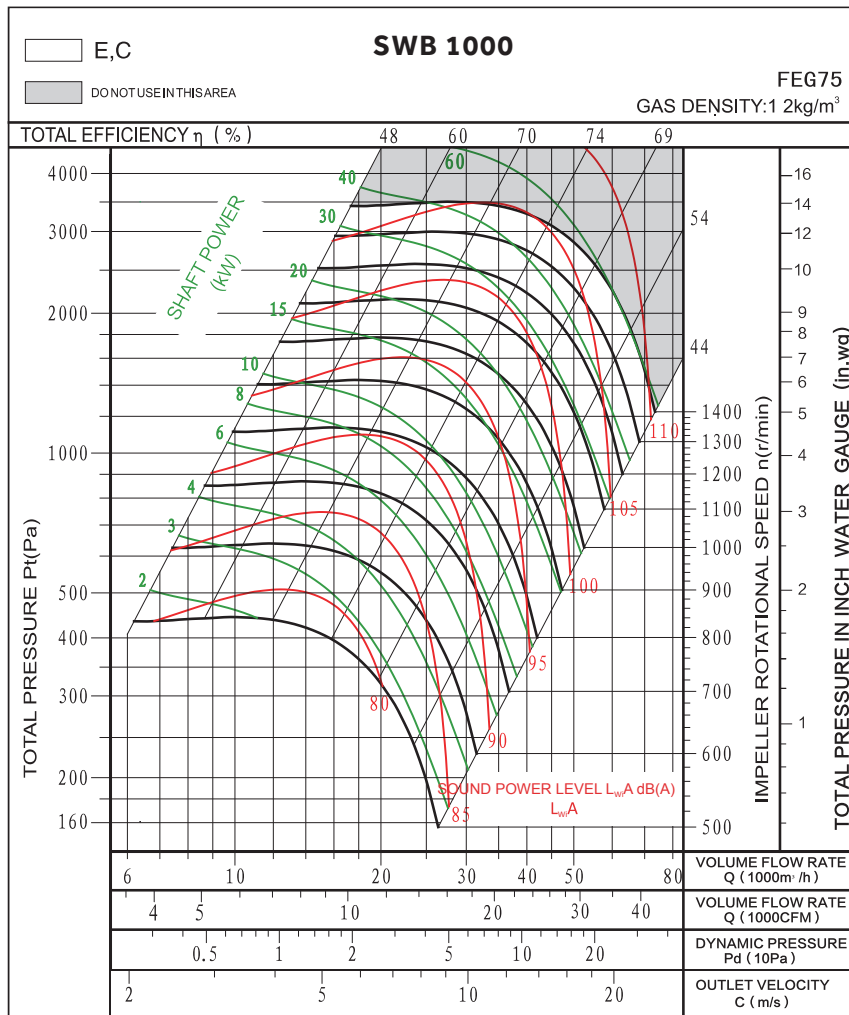
### ➤ SWB1000 FEG75

#### TECHNICAL DATA

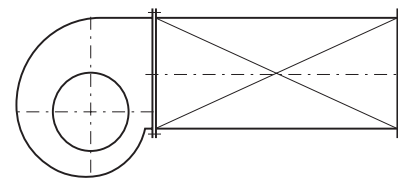
WHEEL DIAMETER	MOMENT OF INERTIA	FAN WEIGHT	SPEED LIMIT
D = 1000 mm	J = 13.64kg.m <sup>2</sup>	m = 435 kg	n <sub>max</sub> = 1400 r/min

#### PERFORMANCE CURVE

Performance certified is for installation type B: free inlet, ducted outlet. Power rating (kW) does not include transmission losses. Performance ratings do not include the effects of appurtenances (accessories). The A-weighted sound ratings shown have been calculated per AMCA International Standard 301. Values shown are for inlet LWiA sound power levels for installation type B: free inlet, ducted outlet.



Measured in installation B according to AMCA Standard 210:



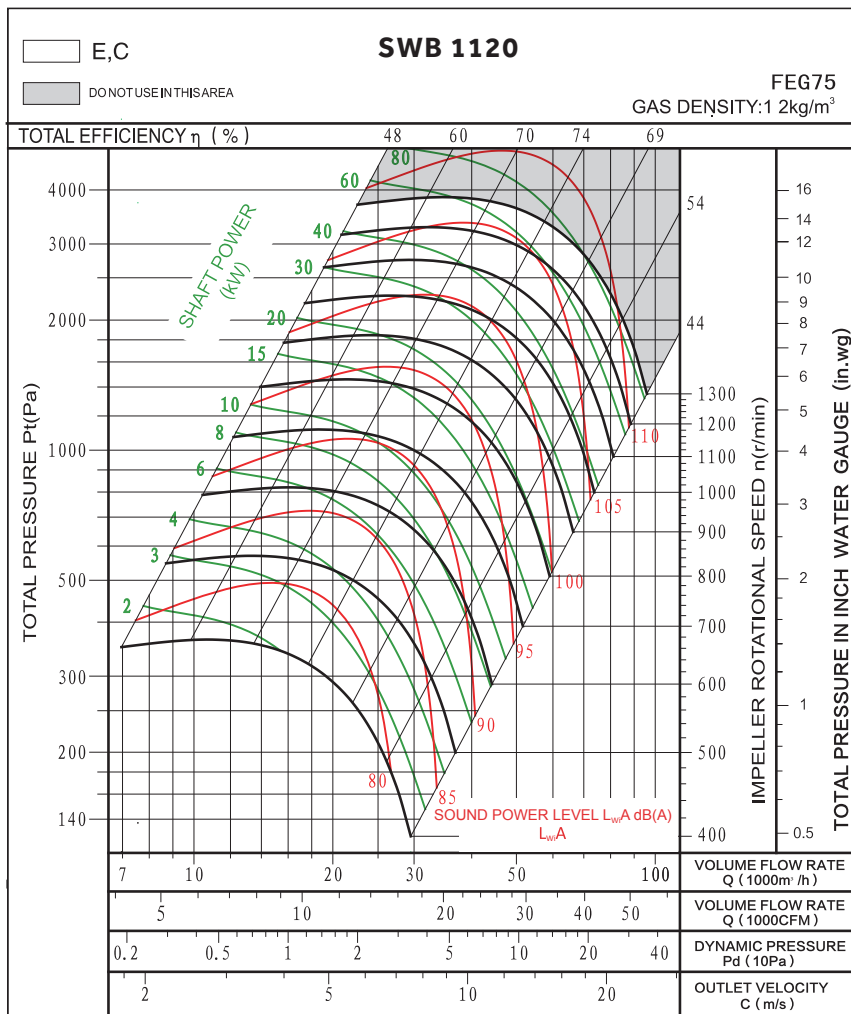
➤ SWB1120 FEG75

TECHNICAL DATA

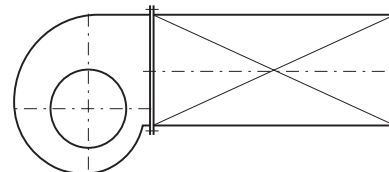
WHEEL DIAMETER	MOMENT OF INERTIA	FAN WEIGHT	SPEED LIMIT
D = 1120 mm	J = 23.93kg.m <sup>2</sup>	m = 600 kg	n <sub>max</sub> = 1300 r/min

PERFORMANCE CURVE

Performance certified is for installation type B: free inlet, ducted outlet. Power rating (kW) does not include transmission losses. Performance ratings do not include the effects of appurtenances (accessories). The A-weighted sound ratings shown have been calculated per AMCA International Standard 301. Values shown are for inlet LWiA sound power levels for installation type B: free inlet, ducted outlet.



Measured in installation B according to AMCA Standard 210:



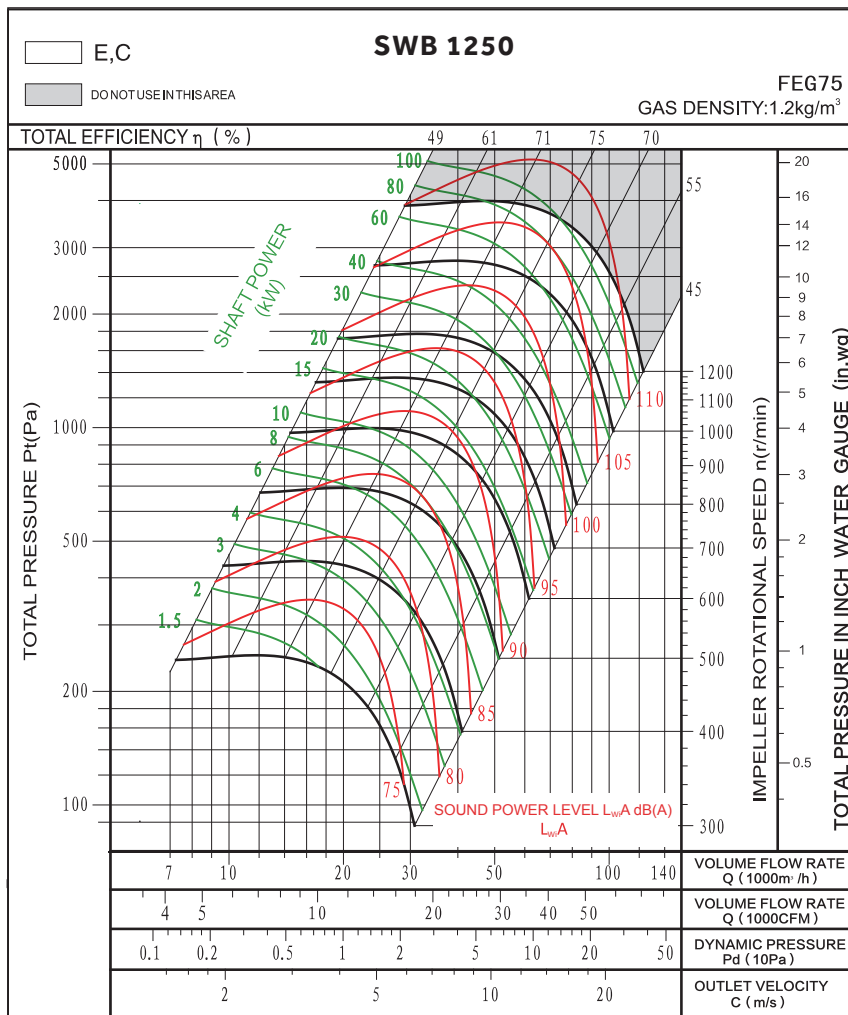
### ➤ SWB1250 FEG75

#### TECHNICAL DATA

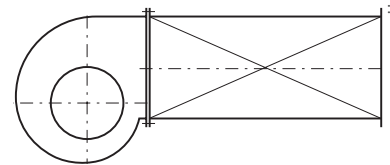
WHEEL DIAMETER	MOMENT OF INERTIA	FAN WEIGHT	SPEED LIMIT
D = 1250 mm	J = 41.7 kg.m <sup>2</sup>	m = 790 kg	n <sub>max</sub> = 1200 r/min

#### PERFORMANCE CURVE

Performance certified is for installation type B: free inlet, ducted outlet. Power rating (kW) does not include transmission losses. Performance ratings do not include the effects of appurtenances (accessories). The A-weighted sound ratings shown have been calculated per AMCA International Standard 301. Values shown are for inlet LWiA sound power levels for installation type B: free inlet, ducted outlet.



Measured in installation B according to AMCA Standard 210



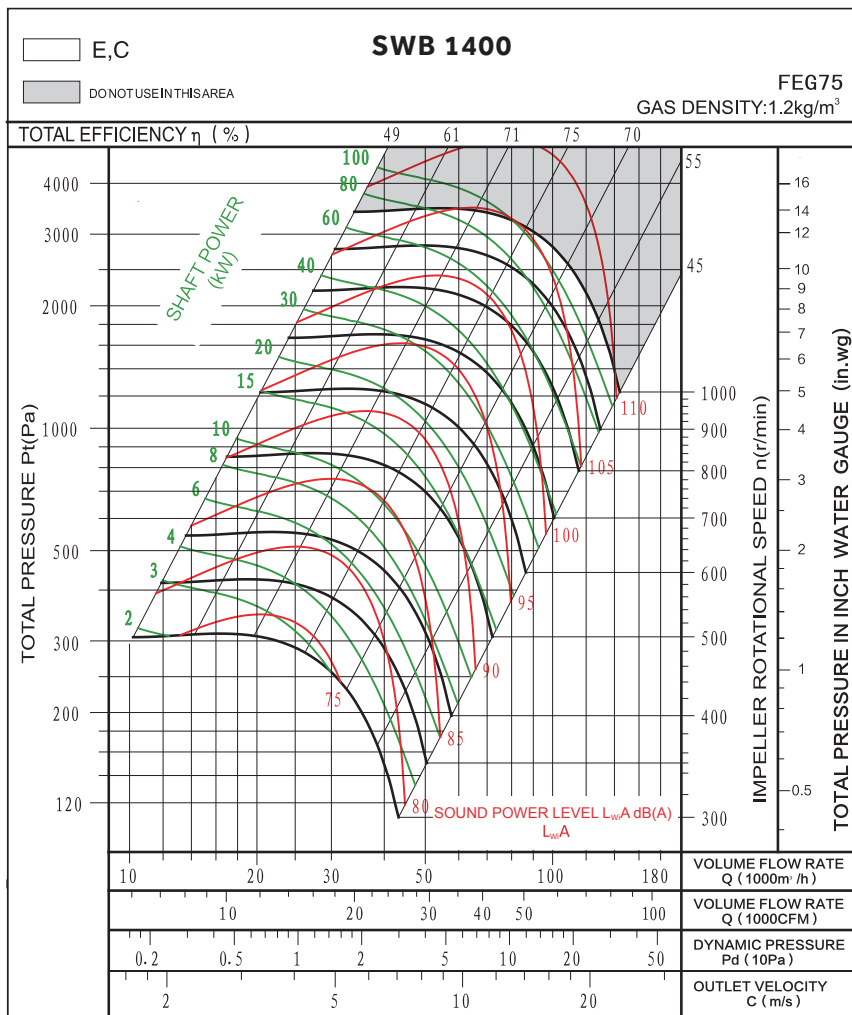
➤ SWB1400 FEG75

TECHNICAL DATA

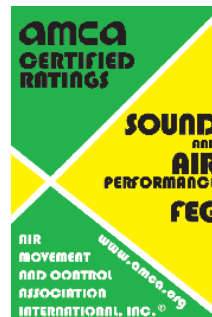
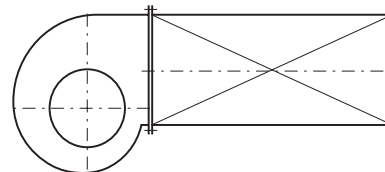
WHEEL DIAMETER	MOMENT OF INERTIA	FAN WEIGHT	SPEED LIMIT
D = 1400 mm	J = 77.4 kg.m <sup>2</sup>	m = 1080 kg	n <sub>max</sub> = 1000 r/min

PERFORMANCE CURVE

Performance certified is for installation type B: free inlet, ducted outlet. Power rating (kW) does not include transmission losses. Performance ratings do not include the effects of appurtenances (accessories). The A-weighted sound ratings shown have been calculated per AMCA International Standard 301. Values shown are for inlet LWiA sound power levels for installation type B: free inlet, ducted outlet.



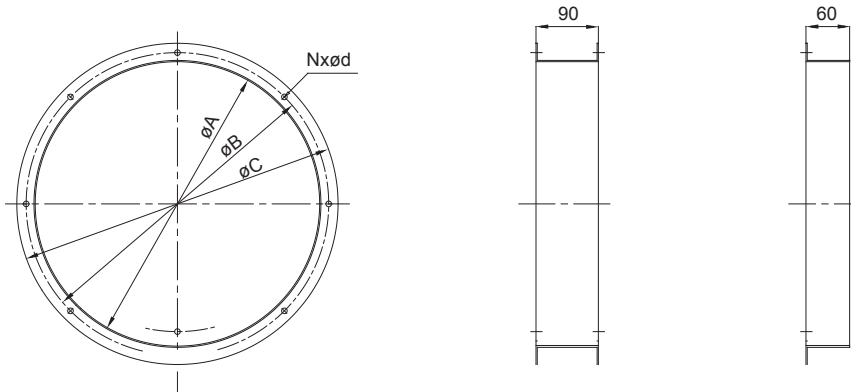
Measured in installation B according to AMCA Standard 210:



# SWB SERIES

## SWB SERIES CENTRIFUGAL FAN

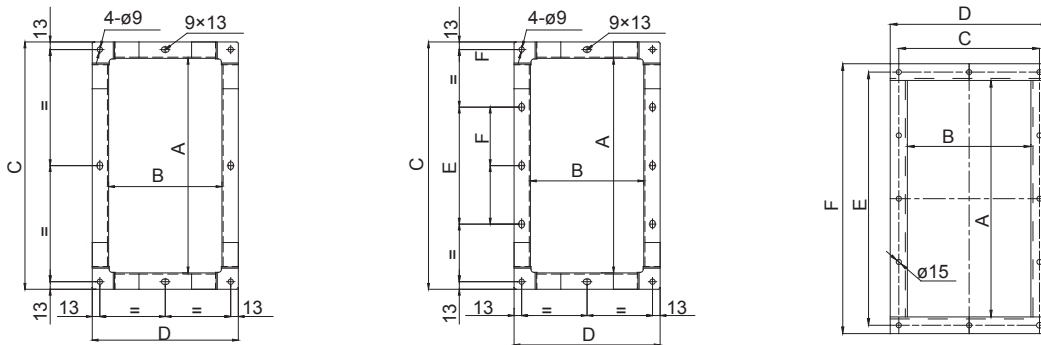
### OUTLET FLANGE



mm

Model Dim	280	315	355	400	450	500	560	630	710	800	900	1000	1120	1250	1400
A	292	322	362	404	448	510	570	635	722	808	896	996	1130	1264	1404
B	325	344	386	432	485	544	605	670	750	844	945	1044	1180	1310	1450
C	355	383	423	466	515	570	635	700	778	875	980	1080	1226	1360	1500
N-d	6x7	6x7	8x9	8x9	8x9	8x11	8x11	10x13	10x13	12x13	12x13	12x13	12x15	16x17	16x17

### ➤ OUTLET FLANGE

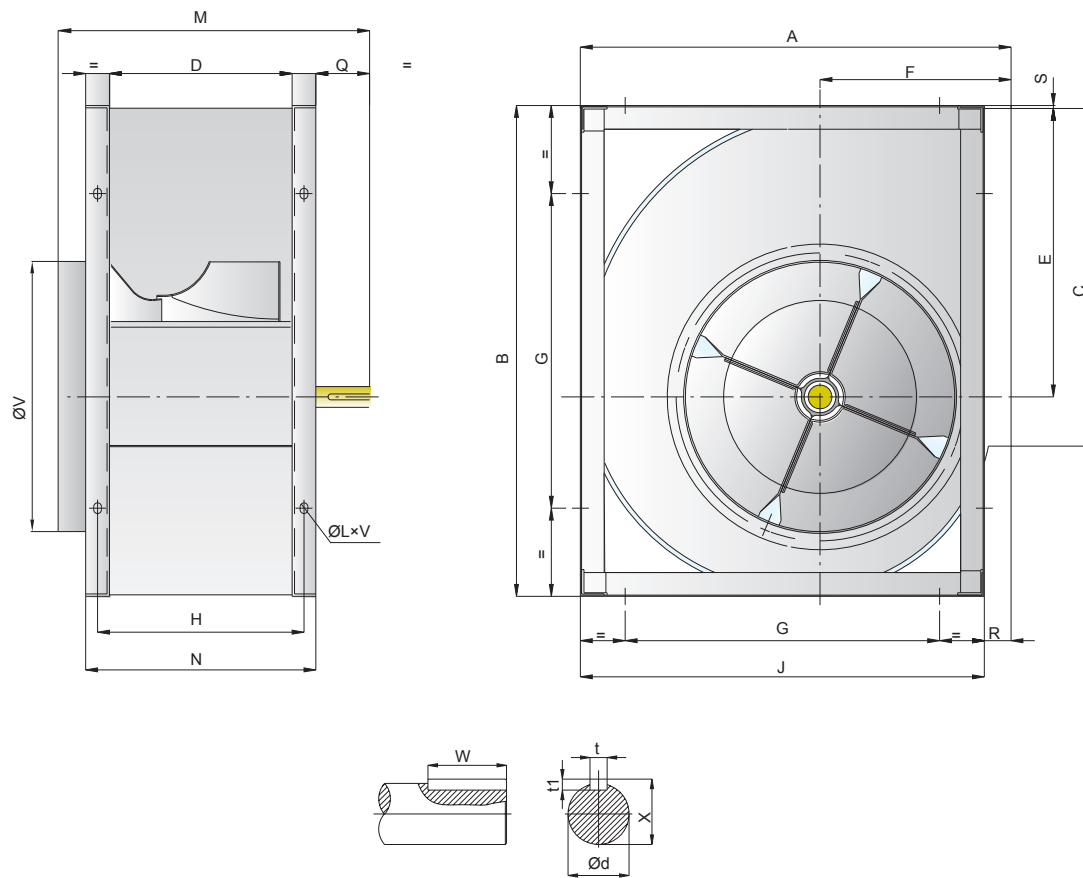


mm

Model Dim	280	315	355	400	450	500	560	630	710	800	900	1000	1120	1250	1400
A	361	404	453	507	569	638	715	801	898	1007	1130	1267	725	800	902
B	197	223	237	257	308	344	383	432	478	533	595	663	1426	1588	1776
C	417	460	509	563	625	684	771	857	954	1063	1186	1323	777	850	952
D	253	279	294	330	364	400	439	488	534	589	651	719	825	900	1002
E	/	/	/	200	200	250	250	300	400	500	600	700	1478	1638	1826
F	/	/	/	/	/	/	/	/	200	250	300	350	1526	1688	1876



➤ **SWB - R**



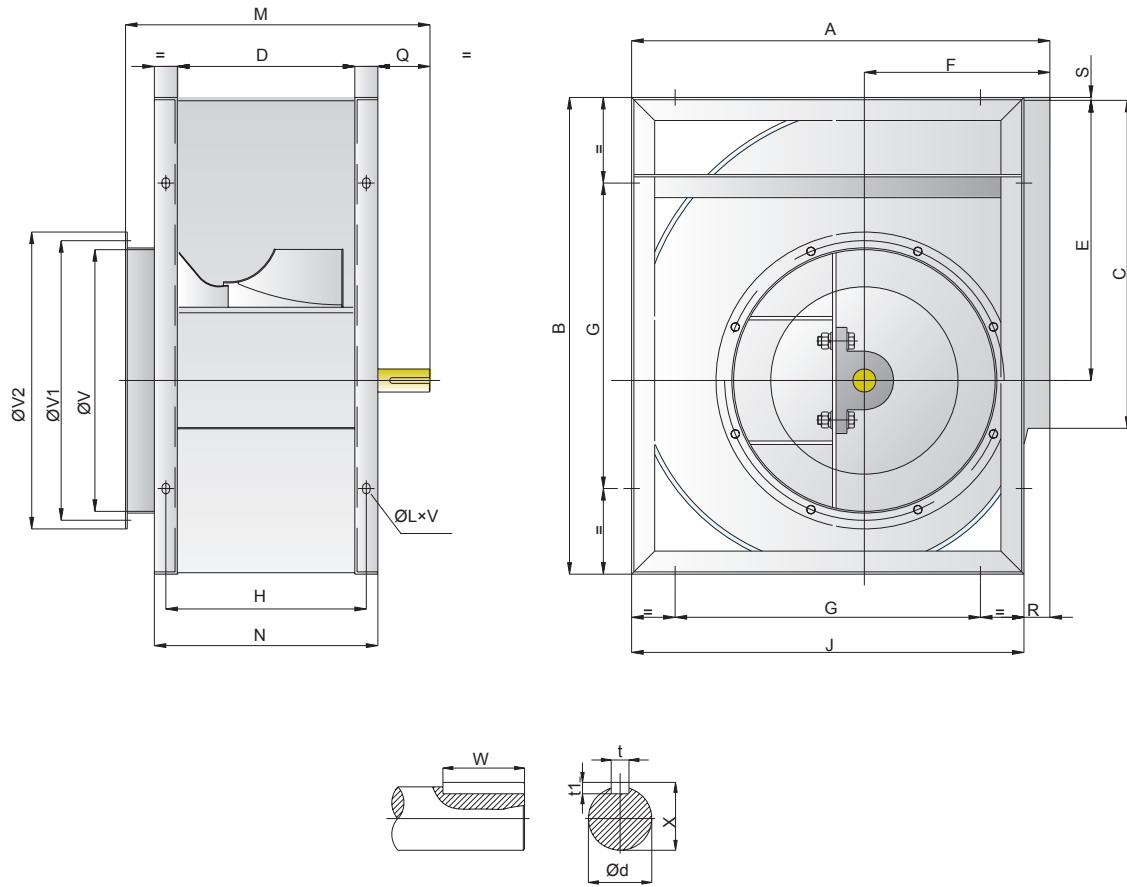
mm

Model Dim	A	B	C	D	E	F	G	H	J	K	M	N	Q	R	S	V	t	t1	W	X	Ød	LxV
<b>280</b>	466	518	361	197	302	215	280	227	432	30	360	257	73	34	5	292	8	7	50	28	25	13x18
<b>315</b>	518	578	404	223	340	236	280	253	480	30	395	283	83	38	3	322	8	7	60	28	25	13x18
<b>355</b>	578	655	453	247	383	261	355	287	548	40	425	327	78	30	6	362	8	7	60	33	30	13x18
<b>400</b>	651	736	507	274	431.5	290	355	314	613	40	452	354	78	38	4.5	404	8	7	60	33	30	13x18
<b>450</b>	726	827	569	308	486	322	530	348	681	40	500	388	92	45	5	448	10	8	70	38	35	13x18
<b>500</b>	800	918	638	344	538	352	530	394	750	40	535	424	92	50	5	510	10	8	70	38	35	13x18
<b>560</b>	893	1030	715	383	602	390	530	433	845	50	600	483	87	48	8	570	12	8	70	43	40	13x18
<b>630</b>	999	1157	801	432	678.5	434	530	482	946	50	650	532	87	53	7	635	14	9	70	48.5	45	13x18
<b>710</b>	1121	1303	898	478	765	485	630	528	1058	50	725	578	115	63	7	722	14	9	90	48.5	50	17x22

# SWB SERIES

## SWB SERIES CENTRIFUGAL FAN

### ➤ SWB - E



mm

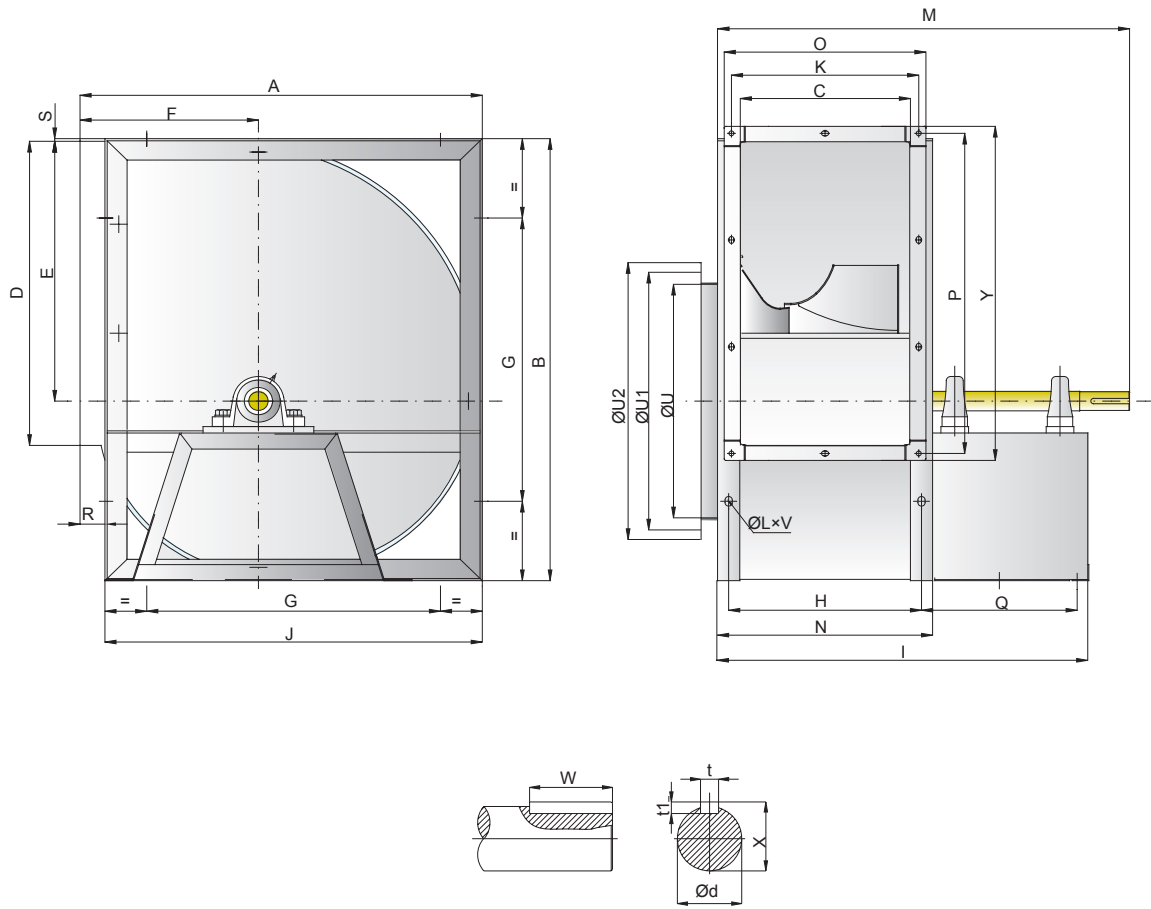
Model Dim	A	B	C	D	E	F	G	H	J	K	M	N	Q	R	S	V	V1	V2	t	t1	W	X	Ød	LxV
280	466	518	361	197	302	215	280	227	432	30	405	257	86	34	5	292	325	355	8	7	60	33	30	13x18
315	518	578	404	223	340	236	280	253	480	30	440	283	96	38	3	322	344	383	8	7	70	33	30	13x18
355	578	655	453	247	383	261	355	287	548	40	470	327	91	30	6	362	386	423	10	8	70	38	35	13x18
400	651	736	507	274	431.5	290	355	314	613	40	497	354	91	38	4.5	404	432	466	10	8	70	38	35	13x18
450	726	827	569	308	486	322	530	348	681	40	556	388	116	45	5	448	485	515	12	8	90	43	40	13x18
500	800	918	638	344	538	352	530	394	750	40	592	424	116	50	5	510	544	570	12	8	90	43	40	13x18
560	893	1030	715	383	602	390	530	433	845	50	640	483	115	48	8	570	605	635	14	9	90	53.5	50	13x18
630	999	1157	801	432	678.5	434	530	482	946	50	690	532	115	53	7	635	670	700	14	9	90	53.5	50	13x18
710	1121	1303	898	478	765	485	630	528	1058	50	746	578	126	63	7	722	750	778	18	11	90	64	60	17x22
800	1250	1468	1107	533	862	535	710	583	1181	50	801	633	126	69	7	808	844	875	18	11	90	64	60	17x22
900	1408	1648	1130	595	971	604	800	655	1319	60	880	715	135	89	7	896	945	980	18	11	100	69	65	17x22
1000	1541	1810	1267	663	1066	657	900	713	1462	60	950	783	135	79	9	996	1044	1080	18	11	100	69	65	17x22



# SWB SERIES

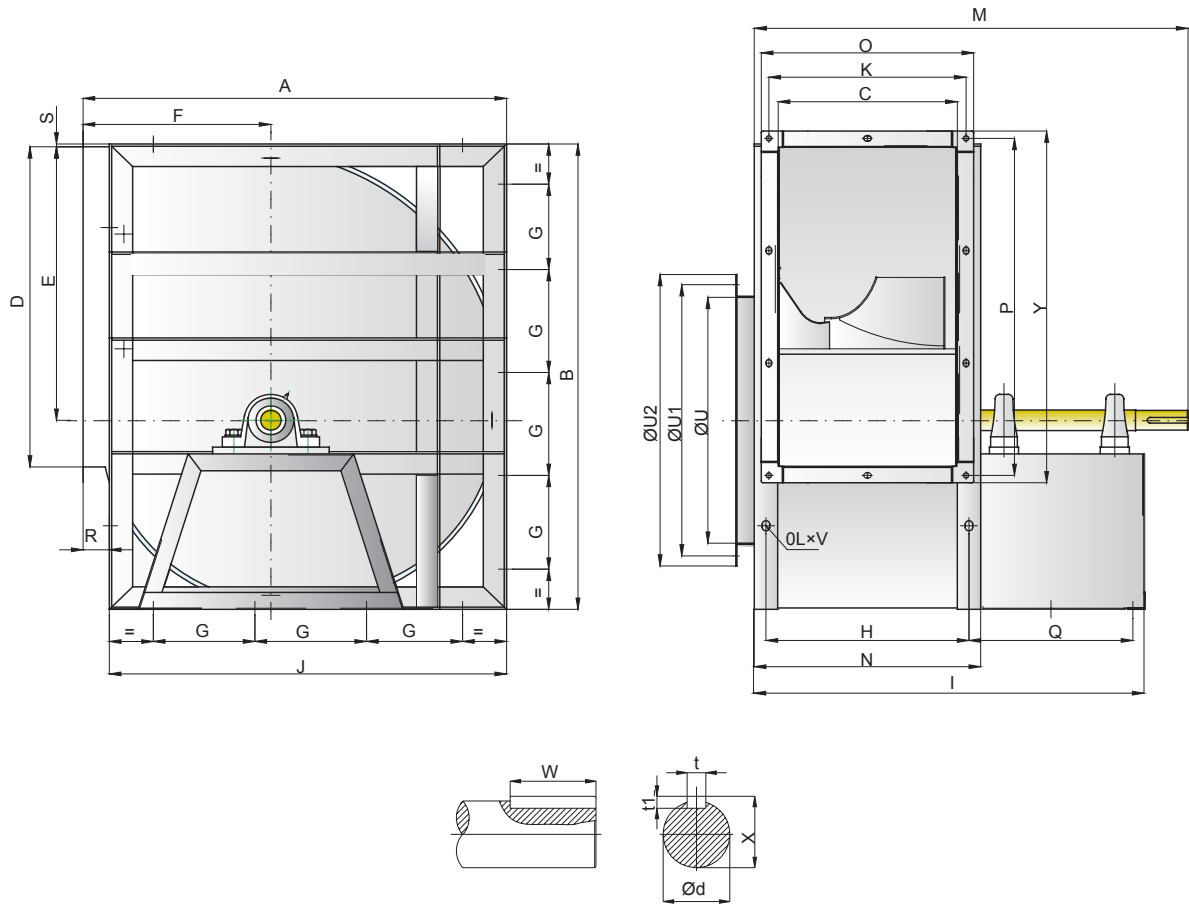
## SWB SERIES CENTRIFUGAL FAN

### ➤ SWB - C



Model	mm																											
Dim	A	B	C	D	E	F	G	H	I	J	K	M	N	O	P	Q	R	S	t	t1	U	U1	U2	W	X	Y	Ød	LxV
280	466	518	197	361	302	215	280	227	530	432	213	590	257	239	391	274	34	5	8	7	292	325	355	40	28	417	25	13x18
315	518	578	223	404	340	236	280	253	556	480	233	612	283	259	434	274	38	3	8	7	322	344	383	40	28	460	25	13x18
355	578	655	247	453	383	261	355	287	627	548	260	697	327	286	483	300	30	6	8	7	362	386	423	50	33	509	30	13x18
400	651	736	274	507	432	290	355	314	654	613	290	724	354	316	537	300	38	4.5	8	7	404	432	466	50	33	563	30	13x18
450	726	827	308	569	486	322	530	348	728	681	318	816	388	344	599	340	45	5	10	8	448	485	515	70	38	625	35	13x18
500	800	918	344	638	538	352	530	384	764	750	350	850	424	376	668	340	50	5	10	8	510	544	570	70	38	694	35	13x18
560	893	1030	383	715	603	390	530	433	855	845	366	945	483	414	745	378	48	8	12	8	570	605	635	90	43	771	40	13x18
630	999	1157	432	801	679	434	530	482	904	946	434	994	532	460	831	378	53	7	12	8	635	670	700	90	43	857	40	13x18
710	1121	1303	478	898	765	485	630	528	1005	1058	483	994	578	512	928	436	63	7	14	9	722	750	778	90	48.5	954	45	17x22
800	1250	1468	533	1107	862	535	710	583	1060	1181	541	1170	633	567	1039	440	69	7	14	9	808	844	875	90	48.5	1063	45	17x22
900	1408	1648	595	1130	971	604	800	655	1191	1319	602	1313	715	613	1160	510	89	7	16	10	896	945	980	100	58.5	1186	45	17x22
1000	1541	1810	663	1267	1066	657	900	713	1259	1462	668	1381	783	694	1297	510	79	9	16	10	996	1044	1080	100	58.5	1323	45	17x22

### ➤ SWB -C



mm

Model	A	B	C	D	E	F	G	H	I	J	K	M	N	O	P	Q	R	S	t	t1	U	U1	U2	W	X	Y	Ød	LxV
<b>1120</b>	1748	2033	722	1421	1192	758	400	782	1397	1630	777	1583	842	825	1478	572	118	11	18	11	1130	1180	1266	120	69	1526	65	17x22
<b>1250</b>	1950	2270	800	1588	1333	840	450	880	1565	1825	850	1740	950	900	1638	600	125	12	20	12	1265	1310	1361	140	74.5	1688	70	17x22
<b>1400</b>	2160	2535	900	1744	1492	920	500	980	1760	2050	952	1910	1050	1002	1826	695	110	10	22	14	1402	1450	1500	140	85	1876	80	17x22

# SWB SERIES

## SWB SERIES CENTRIFUGAL FAN

### ► SWB- C

		0°				90°				180°			
LG Left Hand													
RD Right Hand													
MODEL	MOTOR FRAME SIZE	L	A	B	C	L	A	B	C	L	A	B	C
280	80	425	760	675	568	375	850	675	516	410	760	675	568
	90	435	780	675	568	385	860	675	516	420	780	675	568
	100	445	800	675	568	395	880	675	516	430	800	675	568
	112	455	850	675	568	405	930	675	516	440	850	675	568
	132	465	870	675	568	415	950	675	516	450	870	675	568
315	80	465	800	700	628	405	900	700	568	440	800	700	628
	90	475	820	700	627	415	920	700	568	450	820	700	627
	100	485	850	700	628	425	950	700	568	460	850	700	628
	112	495	900	700	628	435	1000	700	568	470	900	700	628
355	132	505	920	700	628	445	1020	700	568	480	920	700	628
	80	515	850	775	705	445	1000	775	628	480	850	775	705
	90	525	860	775	705	455	1000	775	628	490	860	775	705
	100	535	900	775	705	465	1040	775	628	500	900	775	705
	112	545	960	775	705	475	1080	775	628	510	960	775	705
400	132	555	980	775	705	485	1100	775	628	520	980	775	705
	90	585	930	800	786	500	950	800	701	540	930	800	786
	100	595	960	800	786	510	1000	800	701	550	980	800	786
	112	605	1030	800	786	520	1160	800	701	560	1030	800	786
	132	615	1050	800	786	530	1180	800	701	570	1050	800	786
450	160	615	1100	800	786	530	1230	800	701	570	1100	800	786
	90	650	1100	894	877	548	1120	894	776	590	1000	894	877
	100	660	1050	894	877	558	1170	894	776	600	1050	894	877
	112	670	1100	894	877	568	1220	894	776	610	1100	894	877
	132	680	1120	894	877	578	1270	894	776	620	1120	894	877
500	160	680	1200	894	877	578	1350	894	776	620	1200	894	877
	90	720	1100	930	968	610	1250	930	850	650	1100	930	968
	100	730	1130	930	968	620	1280	930	850	660	1130	930	968
	112	740	1180	930	968	630	1330	930	850	670	1180	930	968
	132	750	1200	930	968	640	1350	930	850	680	1200	930	968
560	160	750	1280	930	968	640	1440	930	850	680	1280	930	968
	100	805	1210	1020	1093	680	1370	1020	956	720	1210	1020	1093
	112	815	1260	1020	1093	690	1420	1020	956	730	1260	1020	1093
	132	825	1280	1020	1093	700	1460	1020	956	740	1280	1020	1093
	160	835	1360	1020	1093	710	1540	1020	956	750	1360	1020	1093
630	180	845	1400	1020	1093	720	1580	1020	956	760	1400	1020	1093
	100	895	1310	1065	1220	755	1530	1065	1062	795	1310	1065	1220
	112	905	1360	1065	1220	765	1580	1065	1062	805	1360	1065	1220
	132	915	1380	1065	1220	775	1600	1065	1062	815	1380	1065	1220
	160	930	1450	1065	1220	790	1680	1065	1062	830	1450	1065	1220
	180	940	1500	1065	1220	800	1730	1065	1062	840	1500	1065	1220
200	950	1550	1065	1220	810	1780	1065	1062	850	1550	1065	1220	

➤ **SWB- C**

		0°				90°				180°			
LG Left Hand													
RD Right Hand													
MODEL	MOTOR FRAME SIZE	L	A	B	C	L	A	B	C	L	A	B	C
710	100	1005	1430	1185	1366	840	1670	1185	1184	885	1430	1185	1366
	112	1015	1480	1185	1366	850	1720	1185	1184	895	1480	1185	1366
	132	1025	1500	1185	1366	860	1740	1185	1184	905	1500	1185	1366
	160	1040	1570	1185	1366	875	1800	1185	1184	920	1570	1185	1366
	180	1050	1620	1185	1366	885	1850	1185	1184	930	1620	1185	1366
	200	1060	1670	1185	1366	895	1900	1185	1184	940	1670	1185	1366
	225	1060	1700	1185	1366	905	1930	1185	1184	950	1700	1185	1366
800	112	1130	1580	1245	1548	950	1880	1245	1330	990	1580	1245	1548
	132	1140	1600	1245	1548	960	1900	1245	1330	1000	1600	1245	1548
	160	1155	1650	1245	1548	975	1950	1245	1330	1015	1650	1245	1548
	180	1165	1720	1245	1548	985	2020	1245	1330	1025	1720	1245	1548
	200	1175	1770	1245	1548	995	2070	1245	1330	1035	1770	1245	1548
	225	1185	1820	1245	1548	1005	2120	1245	1330	1045	1820	1245	1548
	250	1195	1880	1245	1548	1015	2180	1245	1330	1055	1880	1245	1548
900	112	1270	1730	1375	1728	1060	2060	1375	1488	1110	1730	1375	1728
	132	1280	1750	1375	1728	1070	2080	1375	1488	1110	1750	1375	1728
	160	1295	1800	1375	1728	1085	2130	1375	1488	1125	1800	1375	1728
	180	1310	1880	1375	1728	1095	2220	1375	1488	1135	1880	1375	1728
	200	1320	1920	1375	1728	1105	2250	1375	1488	1145	1920	1375	1728
	225	1330	1980	1375	1728	1115	2320	1375	1488	1155	1980	1375	1728
	250	1340	2050	1375	1728	1125	2380	1375	1488	1165	2050	1375	1728
1000	132	1400	1900	1450	1890	1175	2250	1450	1621	1215	1900	1450	1890
	160	1415	1950	1450	1890	1190	2300	1450	1621	1230	1950	1450	1890
	180	1425	2030	1450	1890	1200	2380	1450	1621	1240	2030	1450	1890
	200	1435	2070	1450	1890	1210	2420	1450	1621	1250	2070	1450	1890
	225	1445	2130	1450	1890	1220	2480	1450	1621	1260	2130	1450	1890
	250	1455	2200	1450	1890	1230	2550	1450	1621	1270	2200	1450	1890
	280	1465	2250	1450	1890	1240	2600	1450	1621	1280	2250	1450	1890

# SWB SERIES

## SWB SERIES CENTRIFUGAL FAN

### ► SWB- E

		0°				90°				180°			
LG Left Hand													
RD Right Hand													
MODEL	MOTOR FRAME SIZE	L	A	B	C	L	A	B	C	L	A	B	C
280	80	425	760	430	568	375	850	430	516	410	760	430	568
	90	435	780	430	568	385	860	430	516	420	780	430	568
	100	445	800	430	568	395	880	430	516	430	800	430	568
	112	455	850	430	568	405	930	430	516	440	850	430	568
	132	465	870	430	568	415	950	430	516	450	870	430	568
315	80	465	800	465	628	405	900	465	568	440	800	465	628
	90	475	820	465	627	415	920	465	568	450	820	465	627
	100	485	850	465	628	425	950	465	568	460	850	465	628
	112	495	900	465	628	435	1000	465	568	470	900	465	628
	132	505	920	465	628	445	1020	465	568	480	920	465	628
355	80	515	850	495	705	445	1000	495	628	480	850	495	705
	90	525	860	495	705	455	1000	495	628	490	860	495	705
	100	535	900	495	705	465	1040	495	628	500	900	495	705
	112	545	960	495	705	475	1080	495	628	510	960	495	705
	132	555	980	495	705	485	1100	495	628	520	980	495	705
400	90	585	930	525	786	500	950	525	701	540	930	525	786
	100	595	980	525	786	510	1000	525	701	550	980	525	786
	112	605	1030	525	786	520	1160	525	701	560	1030	525	786
	132	615	1050	525	786	530	1180	525	701	570	1050	525	786
	160	615	1100	525	786	530	1230	525	701	570	1100	525	786
450	90	650	1000	580	877	548	1120	580	776	590	1000	580	877
	100	660	1050	580	877	558	1170	580	776	600	1050	580	877
	112	670	1100	580	877	568	1220	580	776	610	1100	580	877
	132	680	1120	580	877	578	1270	580	776	620	1120	580	877
	160	680	1200	580	877	578	1350	580	776	620	1200	580	877
500	90	720	1100	620	968	610	1250	620	850	650	1100	620	968
	100	730	1130	620	968	620	1280	620	850	660	1130	620	968
	112	740	1180	620	968	630	1330	620	850	670	1180	620	968
	132	750	1200	620	968	640	1350	620	850	680	1200	620	968
	160	750	1280	620	968	640	1440	620	850	680	1280	620	968
560	100	805	1210	665	1093	680	1370	665	956	720	1210	665	1093
	112	815	1260	665	1093	690	1420	665	956	730	1260	665	1093
	132	825	1280	665	1093	700	1460	665	956	740	1280	665	1093
	160	815	1360	665	1093	710	1540	665	956	750	1360	665	1093
	180	845	1400	665	1093	720	1580	665	956	760	1400	665	1093



### ► SWB- E

		0°				90°				180°			
LG Left Hand													
RD Right Hand													
MODEL	MOTOR FRAME SIZE	L	A	B	C	L	A	B	C	L	A	B	C
630	100	895	1310	715	1220	755	1530	715	1062	795	1310	715	1220
	112	905	1360	715	1220	765	1580	715	1062	805	1360	715	1220
	132	915	1380	715	1220	775	1600	715	1062	815	1380	715	1220
	160	930	1450	715	1220	790	1680	715	1062	830	1450	715	1220
	180	940	1500	715	1220	800	1730	715	1062	840	1500	715	1220
	200	950	1550	715	1220	810	1780	715	1062	850	1550	715	1220
710	100	1005	1430	770	1366	840	1670	770	1184	885	1430	770	1366
	112	1015	1480	770	1366	850	1720	770	1184	895	1480	770	1366
	132	1025	1500	770	1366	860	1740	770	1184	905	1500	770	1366
	160	1040	1570	770	1366	875	1800	770	1184	920	1570	770	1366
	180	1050	1620	770	1366	885	1850	770	1184	930	1620	770	1366
	200	1060	1670	770	1366	895	1900	770	1184	940	1670	770	1366
800	112	1130	1580	825	1548	950	1880	825	1330	990	1580	825	1548
	132	1140	1600	825	1548	960	1900	825	1330	1000	1600	825	1548
	160	1155	1650	825	1548	975	1950	825	1330	1015	1650	825	1548
	180	1165	1720	825	1548	985	2020	825	1330	1025	1720	825	1548
	200	1175	1770	825	1548	995	2070	825	1330	1035	1770	825	1548
	225	1185	1820	825	1548	1005	2120	825	1330	1045	1820	825	1548
900	112	1270	1730	905	1728	1060	2060	905	1488	1110	1730	905	1728
	132	1280	1750	905	1728	1070	2080	905	1488	1110	1750	905	1728
	160	1295	1800	905	1728	1085	2130	905	1488	1125	1800	905	1728
	180	1310	1880	905	1728	1095	2220	905	1488	1135	1880	905	1728
	200	1320	1920	905	1728	1105	2250	905	1488	1145	1920	905	1728
	225	1330	1980	905	1728	1115	2320	905	1488	1155	1980	905	1728
1000	132	1400	1900	975	1890	1175	2250	975	1621	1215	1900	975	1890
	160	1415	1950	975	1890	1190	2300	975	1621	1230	1950	975	1890
	180	1425	2030	975	1890	1200	2380	975	1621	1240	2030	975	1890
	200	1435	2030	975	1890	1210	2420	975	1621	1250	2070	975	1890
	225	1445	2130	975	1890	1220	2480	975	1621	1260	2130	975	1890
	250	1455	2200	975	1890	1230	2550	975	1621	1270	2200	975	1890
280	1465	2250	975	1890	1240	2600	975	1621	1280	2250	975	1890	

# SWB SERIES

## SWB SERIES CENTRIFUGAL FAN

### ► SWB- E

		0°				90°				180°			
LG Left Hand													
RD Right Hand													
MODEL	MOTOR FRAME SIZE	L	A	B	C	L	A	B	C	L	A	B	C
280	80	425	760	430	568	375	850	430	516	410	760	430	568
	90	435	780	430	568	385	860	430	516	420	780	430	568
	100	445	800	430	568	395	880	430	516	430	800	430	568
	112	455	850	430	568	405	930	430	516	440	850	430	568
	132	465	870	430	568	415	950	430	516	450	870	430	568
315	80	465	800	465	628	405	900	465	568	440	800	465	628
	90	475	820	465	627	415	920	465	568	450	820	465	627
	100	485	850	465	628	425	950	465	568	460	850	465	628
	112	495	900	465	628	435	1000	465	568	470	900	465	628
	132	505	920	465	628	445	1020	465	568	480	920	465	628
355	80	515	850	495	705	445	1000	495	628	480	850	495	705
	90	525	860	495	705	455	1000	495	628	490	860	495	705
	100	535	900	495	705	465	1040	495	628	500	900	495	705
	112	545	960	495	705	475	1080	495	628	510	960	495	705
	132	555	980	495	705	485	1100	495	628	520	980	495	705
400	90	585	930	525	786	500	950	525	701	540	930	525	786
	100	595	980	525	786	510	1000	525	701	550	980	525	786
	112	605	1030	525	786	520	1160	525	701	560	1030	525	786
	132	615	1050	525	786	530	1180	525	701	570	1050	525	786
	160	615	1100	525	786	530	1230	525	701	570	1100	525	786
450	90	650	1000	580	877	548	1120	580	776	590	1000	580	877
	100	660	1050	580	877	558	1170	580	776	600	1050	580	877
	112	670	1100	580	877	568	1220	580	776	610	1100	580	877
	132	680	1120	580	877	578	1270	580	776	620	1120	580	877
	160	680	1200	580	877	578	1350	580	776	620	1200	580	877
500	90	720	1100	620	968	610	1250	620	850	650	1100	620	968
	100	730	1130	620	968	620	1280	620	850	660	1130	620	968
	112	740	1180	620	968	630	1330	620	850	670	1180	620	968
	132	750	1200	620	968	640	1350	620	850	680	1200	620	968
	160	750	1280	620	968	640	1440	620	850	680	1280	620	968
560	100	805	1210	665	1093	680	1370	665	956	720	1210	665	1093
	112	815	1260	665	1093	690	1420	665	956	730	1260	665	1093
	132	825	1280	665	1093	700	1460	665	956	740	1280	665	1093
	160	815	1360	665	1093	710	1540	665	956	750	1360	665	1093
	180	845	1400	665	1093	720	1580	665	956	760	1400	665	1093

### ► SWB- E

		0°				90°				180°			
LG Left Hand													
RD Right Hand													
MODEL	MOTOR FRAME SIZE	L	A	B	C	L	A	B	C	L	A	B	C
630	100	895	1310	715	1220	755	1530	715	1062	795	1310	715	1220
	112	905	1360	715	1220	765	1580	715	1062	805	1360	715	1220
	132	915	1380	715	1220	775	1600	715	1062	815	1380	715	1220
	160	930	1450	715	1220	790	1680	715	1062	830	1450	715	1220
	180	940	1500	715	1220	800	1730	715	1062	840	1500	715	1220
	200	950	1550	715	1220	810	1780	715	1062	850	1550	715	1220
710	100	1005	1430	770	1366	840	1670	770	1184	885	1430	770	1366
	112	1015	1480	770	1366	850	1720	770	1184	895	1480	770	1366
	132	1025	1500	770	1366	860	1740	770	1184	905	1500	770	1366
	160	1040	1570	770	1366	875	1800	770	1184	920	1570	770	1366
	180	1050	1620	770	1366	885	1850	770	1184	930	1620	770	1366
	200	1060	1670	770	1366	895	1900	770	1184	940	1670	770	1366
	225	1070	1700	770	1366	905	1930	770	1184	950	1700	770	1366
800	112	1130	1580	825	1548	950	1880	825	1330	990	1580	825	1548
	132	1140	1600	825	1548	960	1900	825	1330	1000	1600	825	1548
	160	1155	1650	825	1548	975	1950	825	1330	1015	1650	825	1548
	180	1165	1720	825	1548	985	2020	825	1330	1025	1720	825	1548
	200	1175	1770	825	1548	995	2070	825	1330	1035	1770	825	1548
	225	1185	1820	825	1548	1005	2120	825	1330	1045	1820	825	1548
	250	1195	1880	825	1548	1015	2180	825	1330	1055	1880	825	1548
900	112	1270	1730	905	1728	1060	2060	905	1488	1110	1730	905	1728
	132	1280	1750	905	1728	1070	2080	905	1488	1110	1750	905	1728
	160	1295	1800	905	1728	1085	2130	905	1488	1125	1800	905	1728
	180	1310	1880	905	1728	1095	2220	905	1488	1135	1880	905	1728
	200	1320	1920	905	1728	1105	2250	905	1488	1145	1920	905	1728
	225	1330	1980	905	1728	1115	2320	905	1488	1155	1980	905	1728
	250	1340	2050	905	1728	1125	2380	905	1488	1165	2050	905	1728
1000	132	1400	1900	975	1890	1175	2250	975	1621	1215	1900	975	1890
	160	1415	1950	975	1890	1190	2300	975	1621	1230	1950	975	1890
	180	1425	2030	975	1890	1200	2380	975	1621	1240	2030	975	1890
	200	1435	2030	975	1890	1210	2420	975	1621	1250	2070	975	1890
	225	1445	2130	975	1890	1220	2480	975	1621	1260	2130	975	1890
	250	1455	2200	975	1890	1230	2550	975	1621	1270	2200	975	1890
	280	1465	2250	975	1890	1240	2600	975	1621	1280	2250	975	1890

# SWB SERIES

## SWB SERIES CENTRIFUGAL FAN

### ► SWB- E

		0°				90°				180°			
LG Left Hand													
RD Right Hand													
MODEL	MOTOR FRAME SIZE	L	A	B	C	L	A	B	C	L	A	B	C
280	71	415	740	400	568	365	830	400	516	400	740	400	568
	80	425	760	400	568	375	850	400	516	410	760	400	568
	90	435	780	400	568	385	860	400	516	420	780	400	568
	100	445	800	400	568	395	880	400	516	430	800	400	568
	112	455	850	400	568	405	930	400	516	440	850	400	568
315	71	455	780	435	628	395	880	435	568	430	780	435	628
	80	465	800	435	628	405	900	435	568	440	800	435	628
	90	475	820	435	628	415	920	435	568	450	820	435	628
	100	485	850	435	628	425	950	435	568	460	850	435	628
	112	495	900	435	628	435	1000	435	568	470	900	435	628
355	71	505	830	465	705	435	960	465	628	470	830	465	705
	80	515	850	465	705	445	980	465	628	480	850	465	705
	90	525	860	465	705	455	1000	465	628	490	860	465	705
	100	535	900	465	705	465	1040	465	628	500	900	465	705
	112	545	960	465	705	475	1080	465	628	510	960	465	705
400	71	565	880	495	786	480	900	495	701	520	880	495	786
	80	575	900	495	786	490	920	495	701	530	900	495	786
	90	585	930	495	786	500	950	495	701	540	930	495	786
	100	595	980	495	786	510	1000	495	701	550	980	495	786
	112	605	1030	495	786	520	1160	495	701	560	1030	495	786
	132	615	1050	495	786	530	1180	495	701	570	1050	495	786
450	80	640	980	550	877	548	1100	550	776	580	980	550	877
	90	650	1000	550	877	548	1120	550	776	590	1000	550	877
	100	660	1050	550	877	558	1170	550	776	600	1050	550	877
	112	670	1100	550	877	568	1220	550	776	610	1100	550	877
	132	680	1120	550	877	578	1270	550	776	620	1120	550	877
500	80	710	1080	590	968	600	1230	590	850	640	1080	590	968
	90	720	1100	590	968	610	1250	590	850	650	1100	590	968
	100	730	1130	590	968	620	1280	590	850	660	1130	590	968
	112	740	1180	590	968	630	1330	590	850	670	1180	590	968
	132	750	1200	590	968	640	1350	590	850	680	1200	590	968
560	90	795	1160	635	1093	670	1320	635	956	710	1160	635	1093
	100	805	1210	635	1093	680	1370	635	956	720	1210	635	1093
	112	815	1260	635	1093	690	1420	635	956	730	1260	635	1093
	132	825	1280	635	1093	700	1460	635	956	740	1280	635	1093
	160	835	1360	635	1093	710	1540	635	956	750	1360	635	1093

### ➤ SWB- R

		0°				90°				180°			
<b>LG Left Hand</b>													
<b>RD Right Hand</b>													
MODEL	MOTOR FRAME SIZE	L	A	B	C	L	A	B	C	L	A	B	C
<b>630</b>	90	885	1260	685	1220	745	1480	685	1062	785	1260	685	1220
	100	895	1310	685	1220	755	1530	685	1062	795	1310	685	1220
	112	905	1360	685	1220	765	1580	685	1062	805	1360	685	1220
	132	915	1380	685	1220	775	1600	685	1062	815	1380	685	1220
	160	930	1450	685	1220	790	1680	685	1062	830	1450	685	1220
<b>710</b>	90	995	1380	740	1366	830	1620	740	1184	875	1380	740	1366
	100	1005	1430	740	1366	840	1670	740	1184	885	1430	740	1366
	112	1015	1480	740	1366	850	1720	740	1184	895	1480	740	1366
	132	1025	1500	740	1366	860	1740	740	1184	905	1500	740	1366
	160	1040	1570	740	1366	875	1800	740	1184	920	1570	740	1366

# SWB SERIES

## SWB SERIES CENTRIFUGAL FAN

### ➤ SWB SERIES FAN OPERATIONAL LIMITS

			280	315	355	400	450	500	560	630	710	800	900	1000	1120	1250	1400
Max. absorbed Power	R	Kw	2	2	2.5	3	4	6	8	8	9	/	/	/	/	/	/
	E	Kw	4	4	6	7	7	15	18	20	22	25	30	45	80	100	100
	C	Kw	4	4	6	7	7	15	18	20	22	25	30	45	80	100	100
Max. Speed	R	rmp	4000	3200	2800	2400	2200	2400	2600	1600	1400	/	/	/	/	/	/
	E	rmp	4500	4000	3800	3200	2800	2800	2000	2200	2000	1600	1400	1400	1300	1200	1000
	C	rmp	4500	4000	3800	3200/	2800	2800	2000	2200	2000	1600	1400	1400	1300	1200	1000
Air Temperature Limits (Min-20°C)	R	Max°C	85	85	85	85	85	85	85	85	85	/	/	/	/	/	/
	E	Max°C	85	85	85	85	85	85	85	85	85	85	85	85	85	85	85
	C	Max°C	180	180	180	180	180	180	180	180	180	180	180	180	180	180	180
Fan Weight	R	kg	17	27	39	44	55	70	110	125	175	/	/	/	/	/	/
	E	kg	29	39	52	58	73	91	140	160	210	245	350	435	600	790	1080
	C	kg	27	37	50	55	72	89	138	161	215	252	360	445	610	800	1100

This fan features described in the sample, such as size, performance parameters, the Company reserves the right to change without notice; if unknown place, please call us.

**THE RECOGNIZED LEADER IN  
MANUFACTURING & DISTRIBUTION  
OF HVAC & INDUSTRIAL PRODUCTS  
IN THE MIDDLE EAST.**



**MIDDLE EAST**

PO Box 24021, Sharjah Industrial Area  
United Arab Emirates  
Phone: 971.6534.3488 | Fax: 971.6534.3710  
[energyintl.com](http://energyintl.com)

**UNITED STATES**

5959 Trenton Lane, Minneapolis, MN 55442  
Phone: 763.551.7600 | Fax: 763.551.7601  
[careers.tcf.com](http://careers.tcf.com)