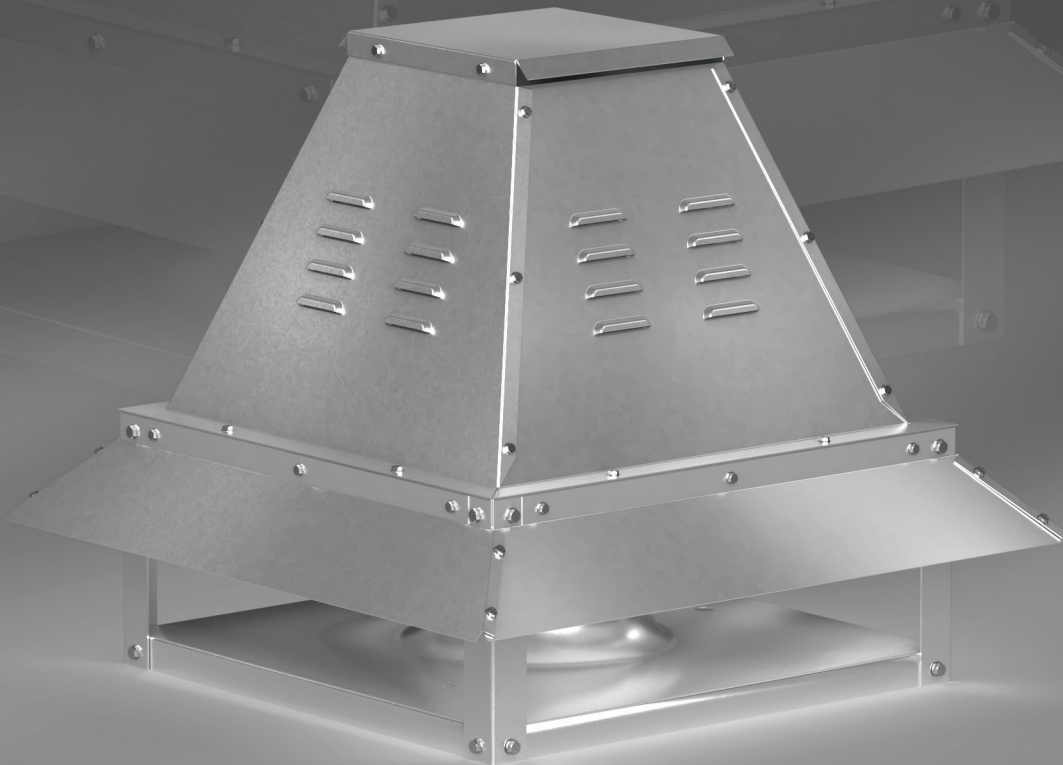


Centrifugal Roof Exhaust Fans Model RV-D

Direct Drive



BUILDING VALUE IN AIR.



 **GREENHECK**
Building Value in Air.

June
2025

Greenheck's model RV-D centrifugal roof exhaust fans provide the industry's best performance and durability for clean air or emergency smoke applications.

Greenheck subjects these products to extensive life testing assuring you the fans will provide years of reliable performance.

Benefits

- Completely selectable in Greenheck's CAPS® program
- Suitable for clean air or emergency smoke applications
- All fans are tested to ensure vibration-free operation
- AMCA licensed for Sound and Air Performance

Emergency Smoke Evacuation

The RV-D model was tested and rated for design time and temperatures used in emergency heat and smoke exhaust applications.



Greenheck India Private Ltd. certifies that the RV-D models shown herein are licensed to bear the AMCA seal. The ratings shown are based on tests and procedures performed in accordance with AMCA Publication 211 and Publication 311 and comply with the requirements of the AMCA Certified Ratings Program.

Certified data may be found in
Greenheck's Computer Aided
Product Selection program CAPS®

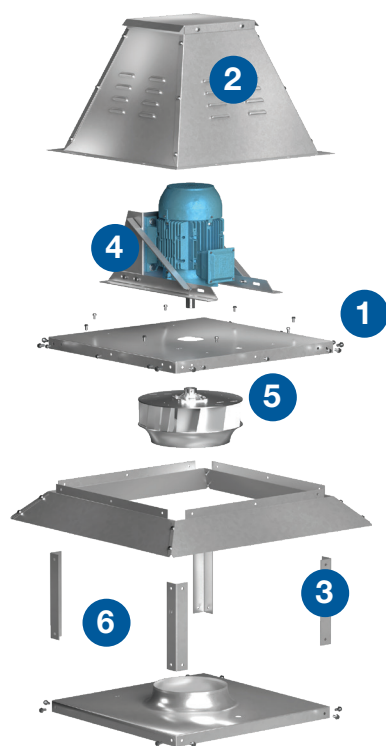


UL Listed Power ventilator
UL File no. E529585

UL Power Ventilator for
Smoke Control Systems
(400°C for 2 hours)
UL File no. E529585

Standard Construction Features and Options

- Available in a range of sizes between 225 to 630 mm
- Performance up to 23,370 cmh (13,759 cfm) and 1,343 Pa (5.4 in. wg)
- Corrosion-resistant galvanized construction
- Direct drive

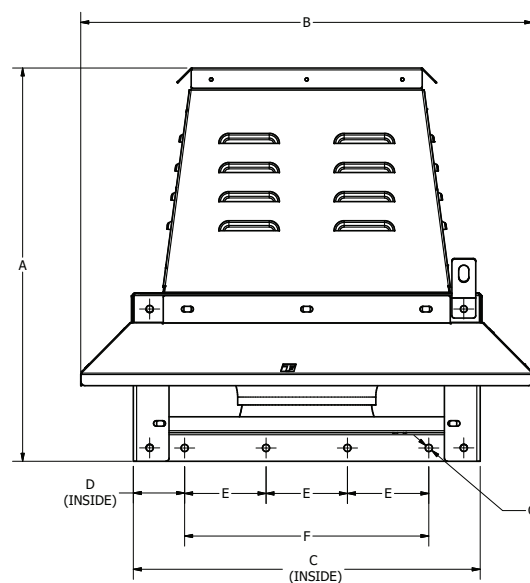


- 1 Housing is constructed entirely of heavy-gauge galvanized steel.
- 2 Removable hood fully open for complete access to all internal components. Open hood is safely supported and will not drop closed.
- 3 Internal structural supports are heavy-gauge galvanized steel angles.
- 4 Drive frames and motor supports are heavy-gauge galvanized/coated steel and are mounted on resilient isolators.
- 5 Backward-inclined, non-overloading wheel is constructed of steel.
- 6 Birdscreen constructed of wire mesh is attached to the structural supports. (Removed from drawing for easy viewing internally)

Dimensional Data

Model	A	B	C (Curb Inside)	D	E	F	G (Hole Diameter)
RV-D-225	495 (19.5)	569 (22.4)	429 (16.9)	61 (2.4)	102.46 (4)	307 (12.1)	9 (0.4)
RV-D-250	541 (21.3)	616 (24.3)	477 (18.8)	61 (2.4)	118.3 (4.7)	355 (14)	10 (0.4)
RV-D-280	605 (23.8)	711 (28)	546 (21.5)	61 (2.4)	141.5 (5.6)	424 (16.7)	10 (0.4)
RV-D-315	676 (26.6)	798 (31.4)	609 (24)	78.5 (3.1)	150.8 (5.9)	452 (17.8)	11 (0.4)
RV-D-355	740 (29.1)	798 (31.4)	609 (24)	100 (3.9)	137.5 (5.4)	412.5 (16.2)	11 (0.4)
RV-D-400	776 (30.6)	938 (36.9)	686 (27)	78.5 (3.1)	176.6 (7)	529.8 (20.9)	11 (0.4)
RV-D-450	862 (33.9)	934 (36.8)	686 (27)	91 (3.6)	252 (9.9)	504 (19.8)	11 (0.4)
RV-D-500	843 (33.2)	1091 (43)	771 (30.4)	78 (3.1)	154 (6.1)	615 (24.2)	11 (0.4)
RV-D-560	940 (37)	1092 (43)	771 (30.4)	81 (3.2)	152 (6)	608 (23.9)	11 (0.4)
RV-D-630	968 (38.1)	1280 (50.4)	863 (34)	78 (3.1)	177 (7)	708 (27.9)	11 (0.4)

Dimensions in millimeters (inches).



Building Segments & Application Types

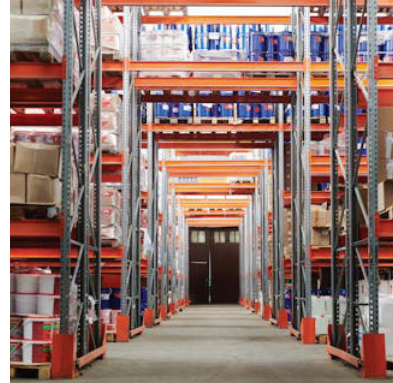
We are known worldwide as a leading manufacturer of high-quality air movement, control and conditioning equipment. Today, our HVAC (heating, ventilation, air conditioning) products are efficiently moving air in a variety of commercial and industrial spaces.



Airports



Automotive Facilities



Warehouses



Food Processing



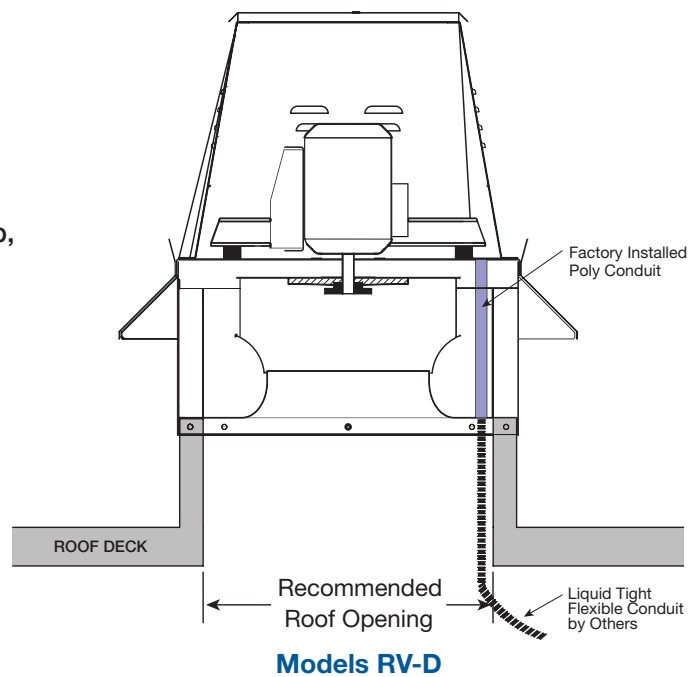
Transportation Terminals

General Clean Air/Fume Hood (Non-Grease)

RV-D is designed for exhaust applications ranging from clean air to contaminated air. A typical installation is shown.

When roofing materials extend to the top of the curb, roof curbs should be 0.5 inches (0.25 inch on a side) less than the unit curb cap to allow for roofing and flashing.

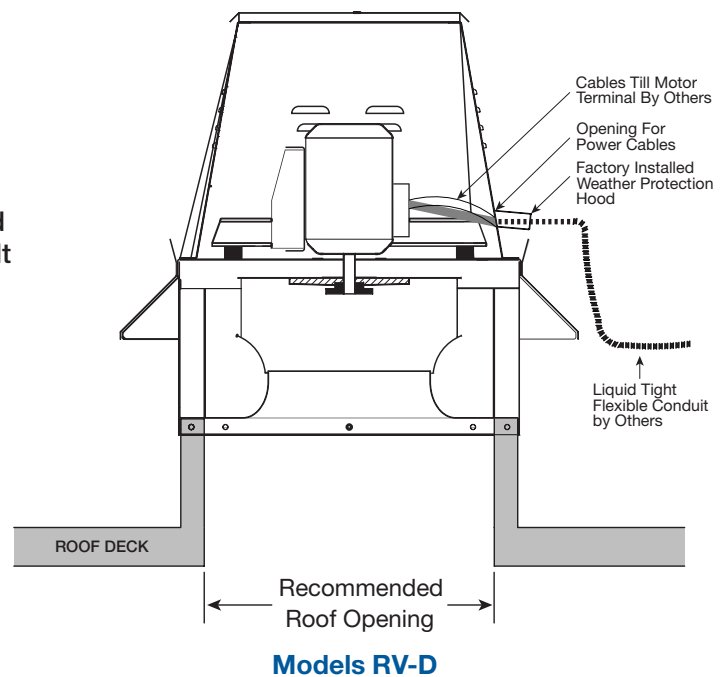
- Installation must include a means for inspecting, cleaning and servicing the exhaust fan.



Emergency Smoke Control

The RV-D with smoke option is specifically designed for Emergency Smoke Control applications. These fans are UL Listed for Power Ventilators for Smoke Control Systems for 400°F for 4 hours.

- Due to the varying airstreams encountered in commercial ventilation, system designers must be aware of national, state, and local codes and guidelines governing these installations. Consult with local code authorities before proceeding with any ventilation project.
- When roofing materials extend to the top of the curb, roof curbs should be 0.5 inches (0.25 inch on a side) less than the unit curb cap to allow for roofing and flashing.
- Installation must include a means for inspecting, cleaning and servicing the exhaust fan.
- Exhaust fans used in emergency smoke applications must have external wiring. (Wiring must not be installed in the airstream).



Design and Selection Support

Enjoy Greenheck's extraordinary service, before, during and after the sale.

Greenheck offers added value to our wide selection of top-performing, energy-efficient products by providing unique Greenheck service programs.

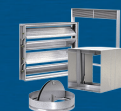
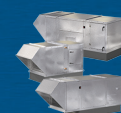
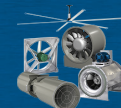
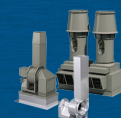
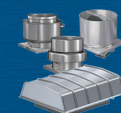
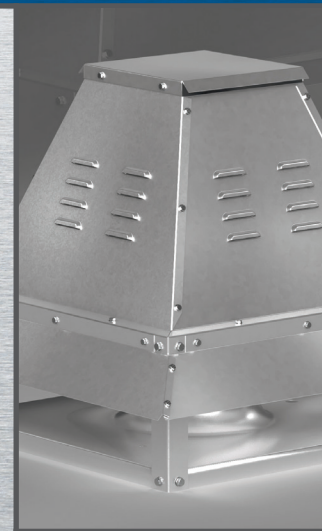
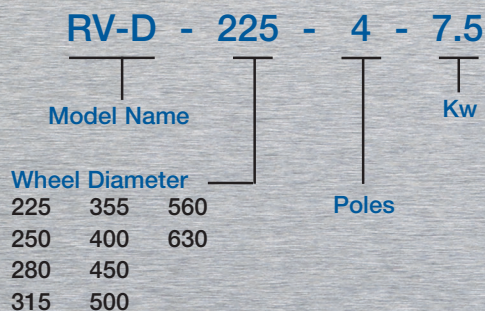


Greenheck's free Computer Aided Product Selection program CAPS® is rated by many as the best in the industry. CAPS helps you conveniently and efficiently select the right products for the challenge at hand.

Greenheck continues to take an industry-wide leadership position to affect positive global sustainability. We believe that providing education on products we offer contributes to reducing energy consumption and improving healthier indoor environments.

Find out more about these special Greenheck services at greenheck.com or greenheck.co.in

Model Number



Building Value in Air

Greenheck delivers value to mechanical engineers by helping them solve virtually any air quality challenges their clients face with a comprehensive selection of

top quality, innovative air-related equipment. We offer extra value to contractors by providing easy-to-install, competitively priced, reliable products that arrive on time.

And building owners and occupants value the energy efficiency, low maintenance and quiet dependable operation they experience long after the construction project ends.

Our Commitment

As a result of our commitment to continuous improvement, Greenheck reserves the right to change specifications without notice.



International
00.INT.2037 R2 06-2025

Copyright © 2025 Greenheck Fan Corp.

Greenheck India: 201-202, 2nd Floor, Landmark Cyber Park, Sector-67, Gurgaon, Haryana-122018 • www.greenheck.co.in

Greenheck U.S.A.: P.O. Box 410 • Schofield, WI 54476-0410 • Phone +1 (715) 359-6171 • www.greenheck.com

Greenheck India Private Ltd has been independently audited and confirmed as being in conformity with ISO 9001:2015 and ISO 14001:2015.