

SEAT VENTILATION SOLUTION

A NEW WIND
FOR A SAFE AND HEALTHY
VENTILATION SYSTEM



SEAT Series



Anti-corrosion solutions
for industry and laboratories.

ANTI-CORROSION FANS

FOR VAPOURS, CORROSIVE GAS
AND TOXIC EXTRACTIONS

SEAT Ventilation is the leader of anti-corrosion fans.

Our company responds to the challenges of its clients of all sizes and in all sectors, from big multinational companies to medium-sized companies or small installers, resellers, manufacturers of laboratory furniture or end users.

The success of our company is based on the daily implementation, in our actions and decisions of four fundamental values:

Technicality

To support all our customers needs and requests with our team of engineers.

Reactivity

To establish and maintain a close relationship with each of our customers, to excel in our quality of service and to respond quickly to requests.

Competitiveness

To optimize and accelerate our processes by reducing costs, with manufacturing of French origin without ever losing sight of our customer's quality requirements.

Innovation

To continuously improve our products and develop new ones to better serve the needs of our customers.



SOLUTION FOR INDUSTRIES

Wide variety of anti-corrosive fans perfectly suited for the extraction of corrosive or toxic fumes, gases and vapors.



SOLUTION FOR LABORATORIES

Complete air extraction control systems and regulatory solutions for laboratory fume cupboards to ensure user safety.



LEADER
in anti-corrosion
fans



Export in
+ 80 COUNTRIES



Business
EXPERTISE



ASS
& training



Made in
FRANCE



+ 500 CLIENTS
trust us

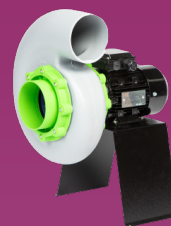


ENERGY
saving

TABLE OF CONTENT

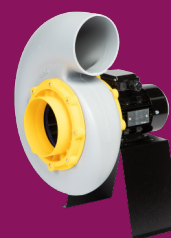
SEAT 15

Page 3



SEAT 20

Page 5



SEAT 25

Page 7



SEAT 30

Page 9



SEAT 35

Page 11



SEAT 50

Page 13



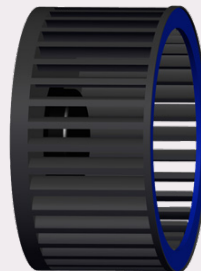
SEAT Series

Housing



- Polypropylene casing
- High corrosion resistant
- From 50 to 15 000 M³/H
- From 20 to 1 800 Pa
- Single block without welded joint
- UV treated
- Available in CW and CCW discharge positions/rotatable in all discharge positions
- Inlet and motor flanges made of polypropylene

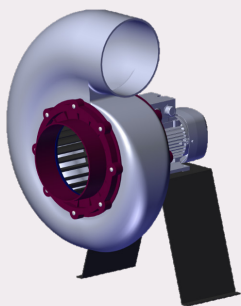
Impellers



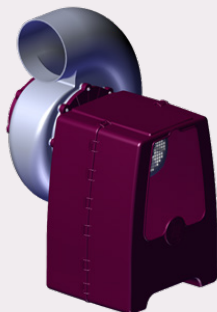
- Forward curved
- Made of polypropylene
- Cap hub made of polypropylene
- Electronically and dynamically balanced

Mounting supports

SEAT fans can be provided in different configurations



Epoxy coated metal stand



Weather hood



Roof kit

Explosion resistant

All the SEAT fans are available in Explosion resistant version. Our fans are compliant with all international standards: ATEX (EN60079) and European Directives (99/92/EC and 94/9/EC).



EXPLOSION RESISTANT MARKING

ATEX : Ex II 3G Ex c GROUP IIC T4



AMCA Certified



SEAT Ventilation certifies that the SEAT Series shown herein is licensed to bear the AMCA Seal. The ratings shown are based on tests and procedures performed in accordance with AMCA Publication 211 and AMCA Publication 311 and comply with the requirements of the AMCA Certified Ratings Program.»

Performance certified is for installation type D - Ducted inlet, Ducted outlet. Performance ratings do not include the effects of appurtenances (accessories). Maximum fan input power over the range catalogued, or fan input power at the stated duty, or maximum motor input watts, voltage and frequency over the range catalogued, or motor input watts, voltage, and frequency at the state duty. - Rating Methods D.

The sound power level ratings shown are in decibels, referred to 10-12 watts, calculated per AMCA standard 301. Values shown are for inlet Lwi and LwiA sound power levels for installation Type D: Ducted inlet, Ducted outlet. Ratings include the effects of duct end correction. The A-weighted sound ratings shown have been calculated per AMCA International Standard 301. Sound pressure levels are not licensed by AMCA international.

SEAT Series

Table of references

Single-phase series

| | Motor RPMs (RPM) | Power (kW) | Voltage (V) | Intensity (A) | Weight (kg) | Part number |
|---------|------------------|------------|-------------|---------------|-------------|-------------|
| SEAT 15 | 1450 | 0,18 | 230 | 1,4/1,4 | 8,53 | 51152010 |
| | 2870 | 0,37 | 230 | 2,52/2,52 | 8,23 | 51153010 |
| SEAT 20 | 1450 | 0,18 | 230 | 1,4/1,4 | 9,3 | 51202010 |
| | 2870 | 0,75 | 230 | 4,8/4,8 | 10,5 | 51203010 |
| SEAT 25 | 1450 | 0,37 | 230 | 2,7/2,7 | 11,9 | 51252010 |
| SEAT 30 | 1450 | 1,1 | 230 | 7,23/7,23 | 20,7 | 51302010 |

Three-phase series

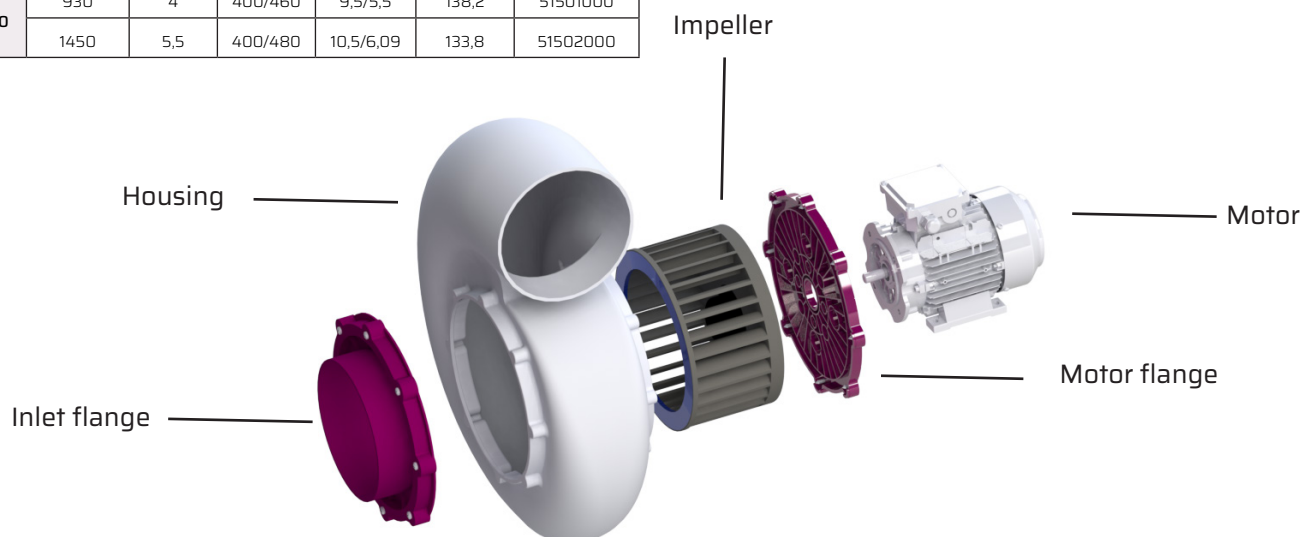
Asynchronous series

| | Motor RPMs (RPM) | Power (kW) | Voltage (V) | Intensity (A) | Weight (kg) | Part number |
|---------|------------------|------------|-------------|---------------|-------------|-------------|
| SEAT 15 | 930 | 0,18 | 230/400 | 1,22/0,7 | 8,14 | 51151000 |
| | 1450 | 0,18 | 230/400 | 1,09/0,63 | 8,24 | 51152000 |
| | 2870 | 0,37 | 230/400 | 1,64/0,94 | 8,23 | 51153000 |
| SEAT 20 | 930 | 0,18 | 230/400 | 1,22/0,7 | 8,9 | 51201000 |
| | 1450 | 0,18 | 230/400 | 1,09/0,63 | 9 | 51202000 |
| | 2870 | 0,75 | 230/400 | 2,85/1,64 | 12,5 | 51203000 |
| | 2870 | 1,1 | 230/400 | 4,02/2,31 | 13,5 | 51203001 |
| SEAT 25 | 930 | 0,18 | 230/400 | 1,22/0,7 | 10,8 | 51251000 |
| | 1450 | 0,37 | 230/400 | 1,85/1,06 | 11,3 | 51252000 |
| | 1450 | 0,55 | 230/400 | 2,59/1,49 | 12,4 | 51252055 |
| | 2870 | 1,5 | 230/400 | 5,32/3,06 | 19,9 | 51253001 |
| | 2870 | 2,2 | 230/400 | 7,56/4,35 | 23,9 | 51253000 |
| | 2870 | 3 | 230/400 | 11,4/6,6 | 27,7 | 51253007 |
| SEAT 30 | 930 | 0,55 | 230/400 | 2,72/1,57 | 18,7 | 51301000 |
| | 1450 | 1,1 | 230/400 | 4,32/2,48 | 21,2 | 51302000 |
| SEAT 35 | 730 | 1,5 | 230/400 | 7,45/4,3 | 37,8 | 51350000 |
| | 930 | 2,2 | 230/400 | 8,85/5,09 | 47,7 | 51351000 |
| | 1450 | 4 | 230/400 | 13,8/7,95 | 50,2 | 51352400 |
| | 1450 | 5,5 | 400/690 | 10,7/6,19 | 62,2 | 51352000 |
| | 1450 | 7,5 | 400/690 | 14,3/8,23 | 70,4 | 51352001 |
| SEAT 50 | 930 | 4 | 400/460 | 9,5/5,5 | 138,2 | 51501000 |
| | 1450 | 5,5 | 400/480 | 10,5/6,09 | 133,8 | 51502000 |

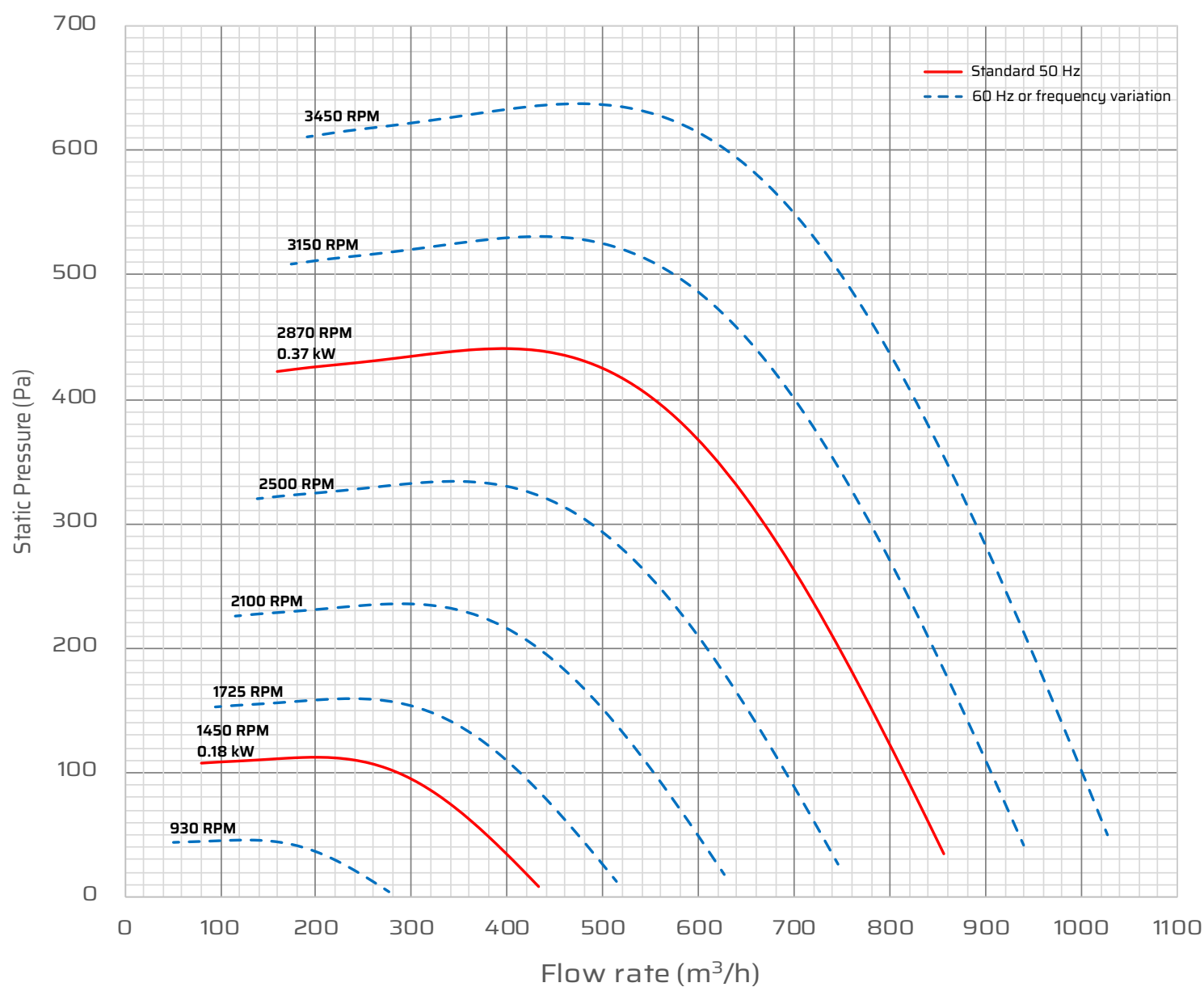
Explosion Resistant series

| | Motor RPMs (RPM) | Power (kW) | Voltage (V) | Intensity (A) | Weight (kg) | Part number |
|---------|------------------|------------|-------------|---------------|-------------|-------------|
| SEAT 15 | 1450 | 0,18 | 230/400 | 1,13/0,65 | 7,9 | 51152003 |
| | 2870 | 0,37 | 230/400 | 2,1/1,2 | 10,45 | 51153003 |
| SEAT 20 | 1450 | 0,18 | 230/400 | 1,13/0,65 | 8,6 | 51202003 |
| | 2870 | 0,75 | 230/400 | 3,46/2 | 13,5 | 51203003 |
| SEAT 25 | 930 | 0,18 | 230/400 | 1,06/0,61 | 12,8 | 51251003 |
| | 1450 | 0,37 | 230/400 | 1,94/1,12 | 12,3 | 51252003 |
| | 2870 | 2,2 | 230/400 | 8,7/5 | 20,9 | 51253003 |
| SEAT 30 | 1450 | 1,1 | 230/400 | 5,7/3,3 | 20,7 | 51302003 |
| SEAT 35 | 930 | 2,2 | 230/400 | 10/5,7 | 45,1 | 51351003 |
| | 1450 | 5,5 | 400/690 | 11,5/6,6 | 66,6 | 51352003 |
| | 1450 | 7,5 | 230/400 | 0/14,3 | 70,2 | 51352004 |

Exploded view



SEAT 15

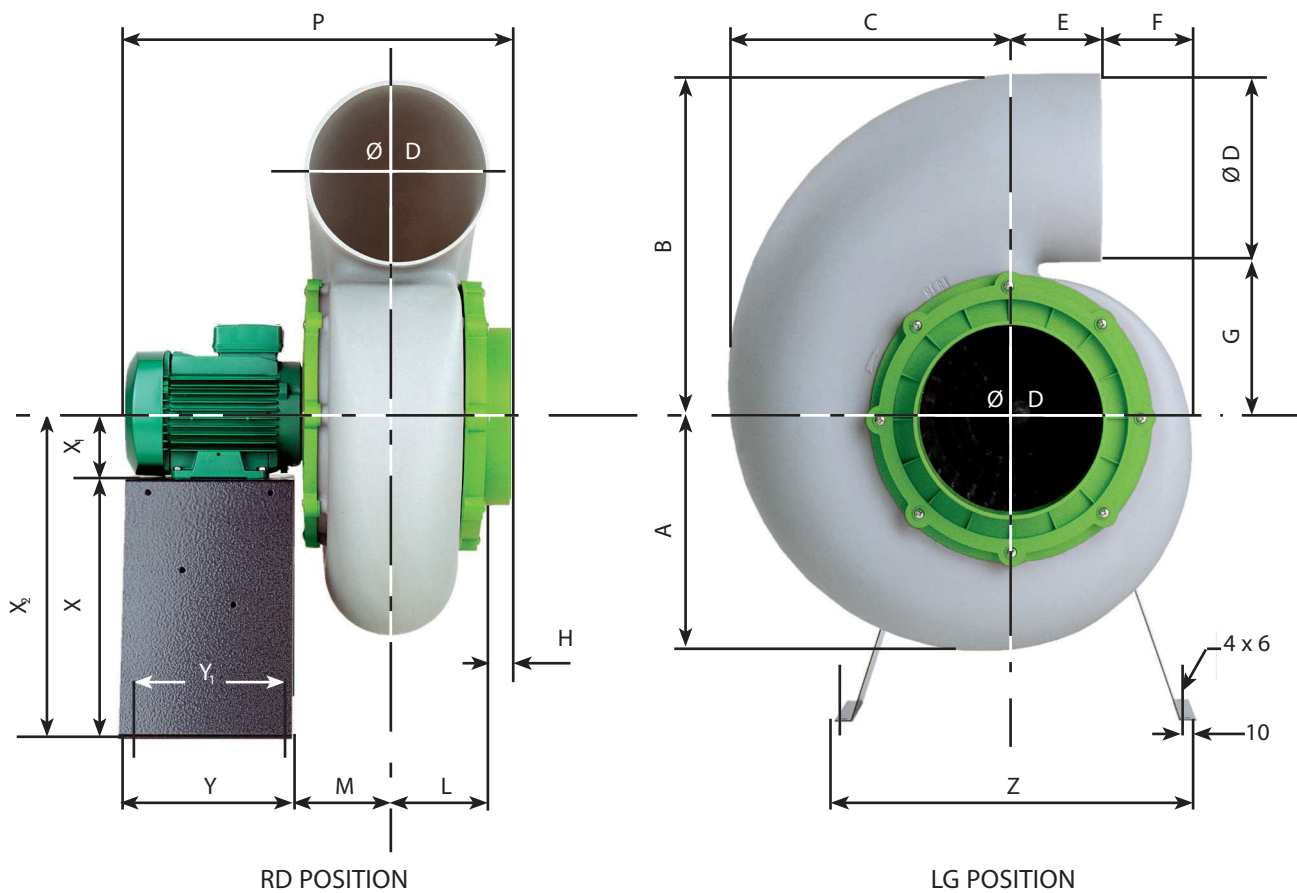


Inlet sound

| | Q _v | SP | L _w A | L _p A * | Octave band (Hz) | | | | | | | |
|------|----------------|------|------------------|--------------------|------------------|-----|-----|-----|------|------|------|------|
| RPM | (m³/h) | (Pa) | dB(A) | dB(A) | 63 | 125 | 250 | 500 | 1000 | 2000 | 4000 | 8000 |
| 1450 | 245 | 106 | 67 | 46 | 82 | 76 | 71 | 64 | 59 | 48 | 42 | 34 |
| 2870 | 414 | 485 | 81 | 61 | 97 | 91 | 86 | 79 | 74 | 63 | 57 | 49 |

















* Acoustic pressure L_p at 3 meters - Outlet acoustic data available on request

SEAT 15

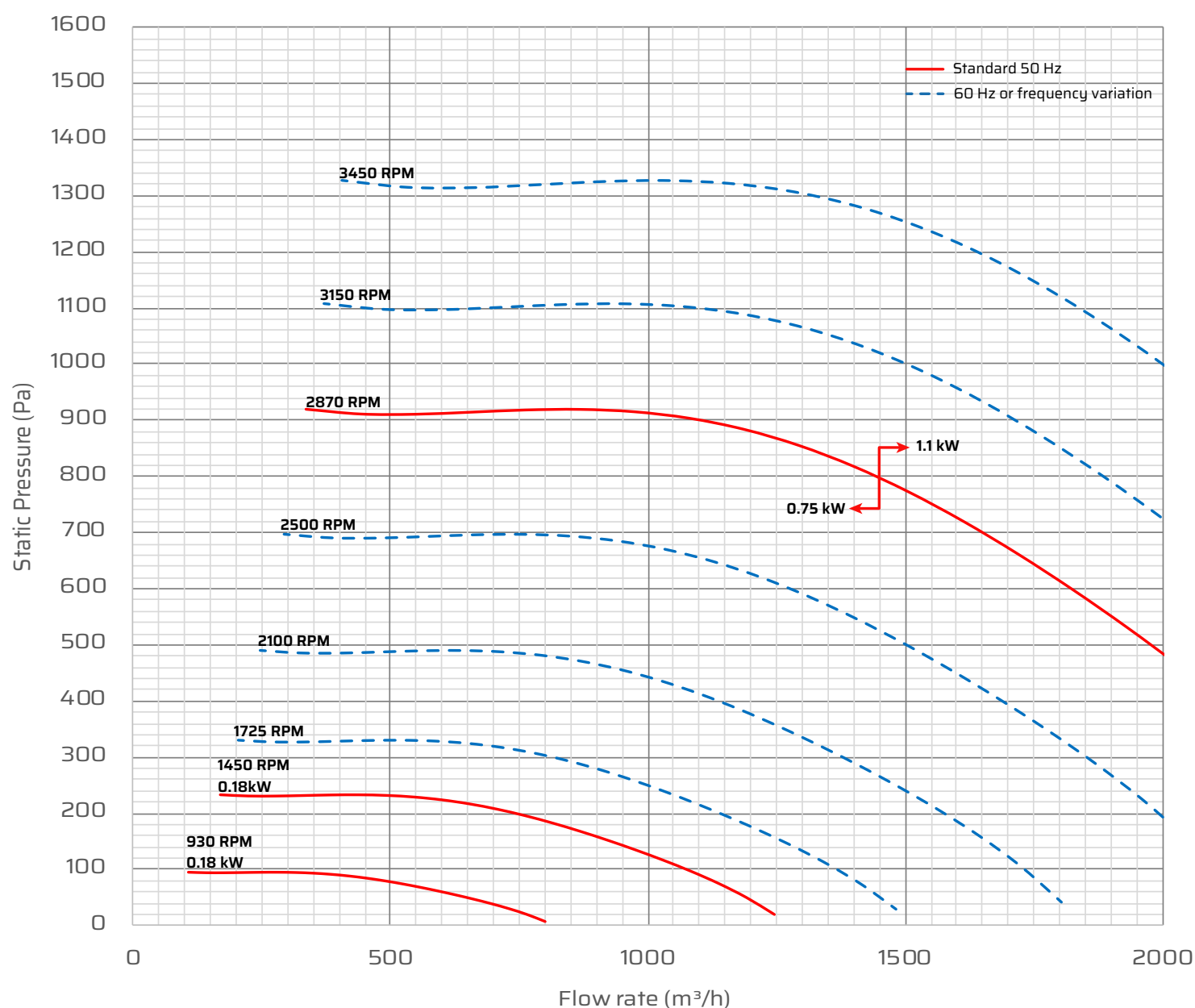


Available in ATEX version 

| Dimensional data (mm) | | | | | | | | | | | | | | | | |
|--|-----|-----|-----|-----|----|-----|----|----|----|-----|-----|----------------|-----|-----|----------------|----------------|
| Metal stand is optional - Motor size may vary upon model | | | | | | | | | | | | | | | | |
| A | B | C | Ø D | E | F | G | H | L | M | P | Y | Y ₁ | Z | X | X ₁ | X ₂ |
| 170 | 240 | 203 | 125 | 100 | 32 | 115 | 30 | 70 | 80 | 360 | 180 | 160 | 340 | 240 | 71 | 311 |

| Discharge positions - View from inlet side | | | | | | | |
|---|---|---|---|---|---|---|---|
|  |  |  |  |  |  |  |  |
| LG 0 | LG 45 | LG 90 | LG 135 | LG 180 | LG 225 | LG 270 | LG 315 |
|  |  |  |  |  |  |  |  |
| RD 0 | RD 45 | RD 90 | RD 135 | RD 180 | RD 225 | RD 270 | RD 315 |

SEAT 20

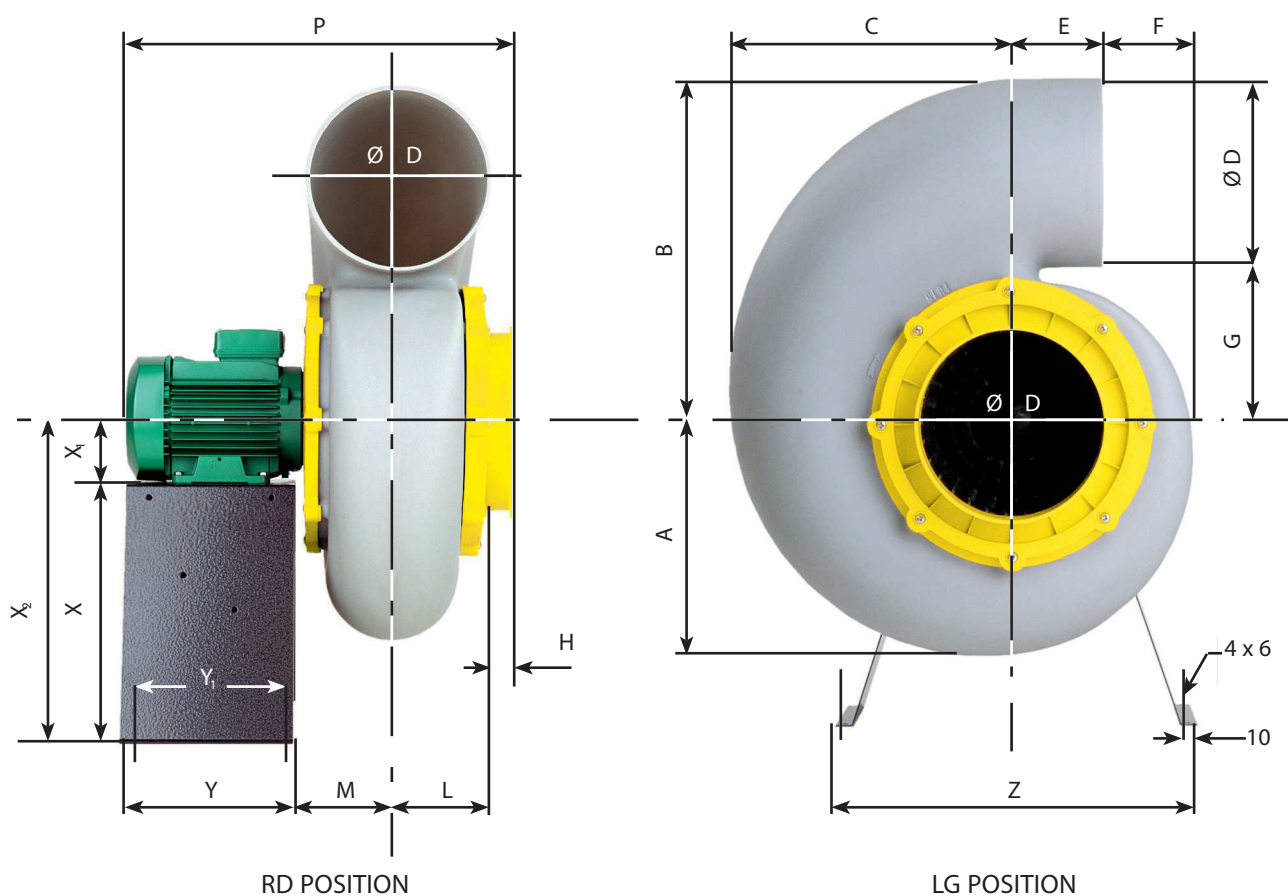


Inlet sound

| | Q _v | SP | LwA | LpA * | Octave band (Hz) | | | | | | | |
|------|----------------|------|-------|-------|------------------|-----|-----|-----|------|------|------|------|
| RPM | (m³/h) | (Pa) | dB(A) | dB(A) | 63 | 125 | 250 | 500 | 1000 | 2000 | 4000 | 8000 |
| 1450 | 760 | 188 | 76 | 56 | 93 | 76 | 80 | 73 | 66 | 55 | 53 | 46 |
| 2870 | 1500 | 735 | 91 | 70 | 108 | 91 | 95 | 88 | 81 | 70 | 67 | 61 |

















* Acoustic pressure Lp at 3 meters - Outlet acoustic data available on request

SEAT 20

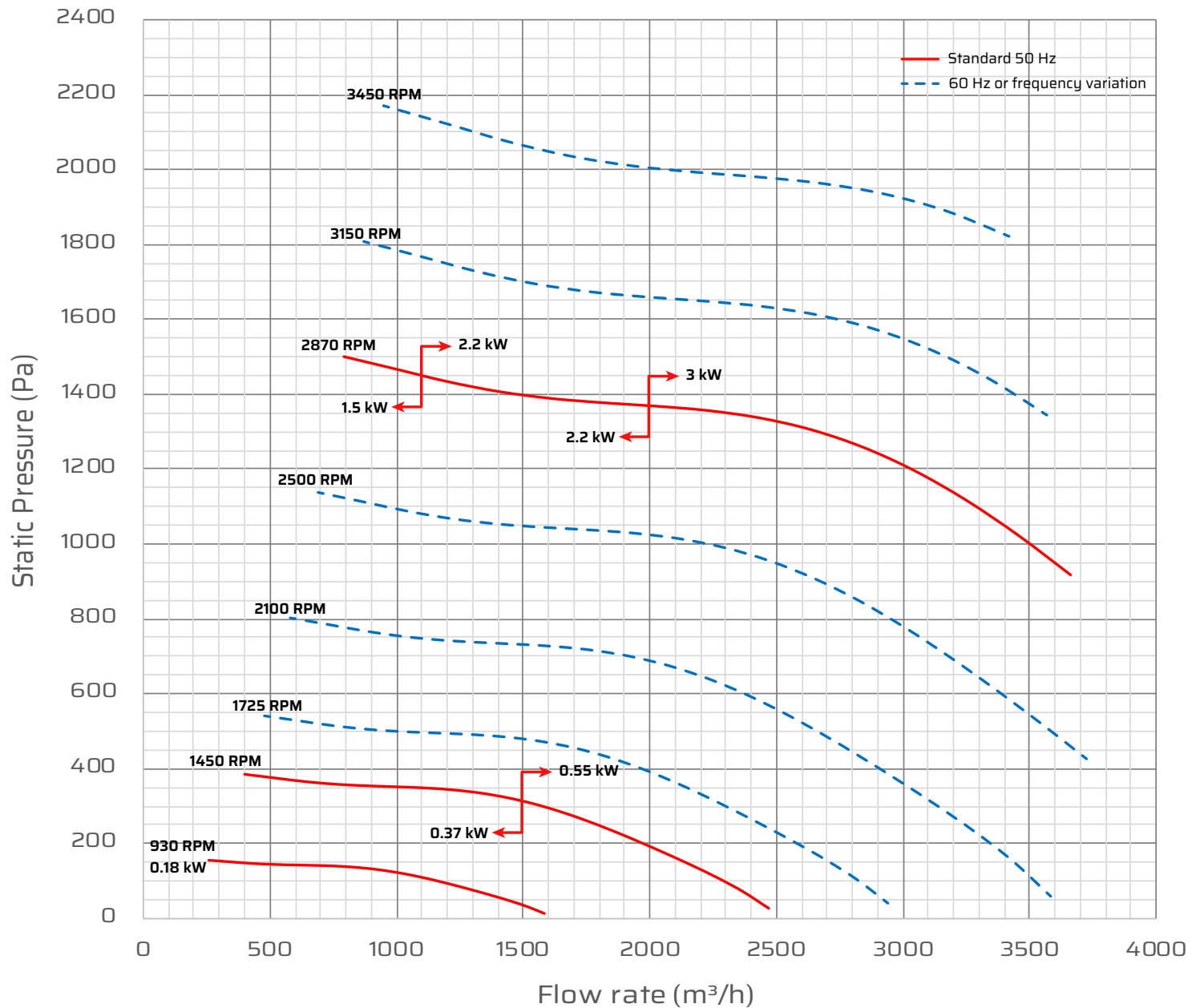


Available in ATEX version 

| Dimensional data (mm) | | | | | | | | | | | | | | | | |
|--|-----|-----|-----|-----|----|-----|----|----|----|-----|-----|----------------|-----|-----|----------------|----------------|
| Metal stand is optional - Motor size may vary upon model | | | | | | | | | | | | | | | | |
| A | B | C | Ø D | E | F | G | H | L | M | P | Y | Y ₁ | Z | X | X ₁ | X ₂ |
| 208 | 303 | 240 | 160 | 100 | 57 | 143 | 32 | 84 | 94 | 390 | 180 | 160 | 340 | 240 | 71 | 311 |

| Discharge positions - View from inlet side | | | | | | | |
|---|---|---|---|---|--|---|---|
|  |  |  |  |  |  |  |  |
| LG 0 | LG 45 | LG 90 | LG 135 | LG 180 | LG 225 | LG 270 | LG 315 |
|  |  |  |  |  |  |  |  |
| RD 0 | RD 45 | RD 90 | RD 135 | RD 180 | RD 225 | RD 270 | RD 315 |

SEAT 25

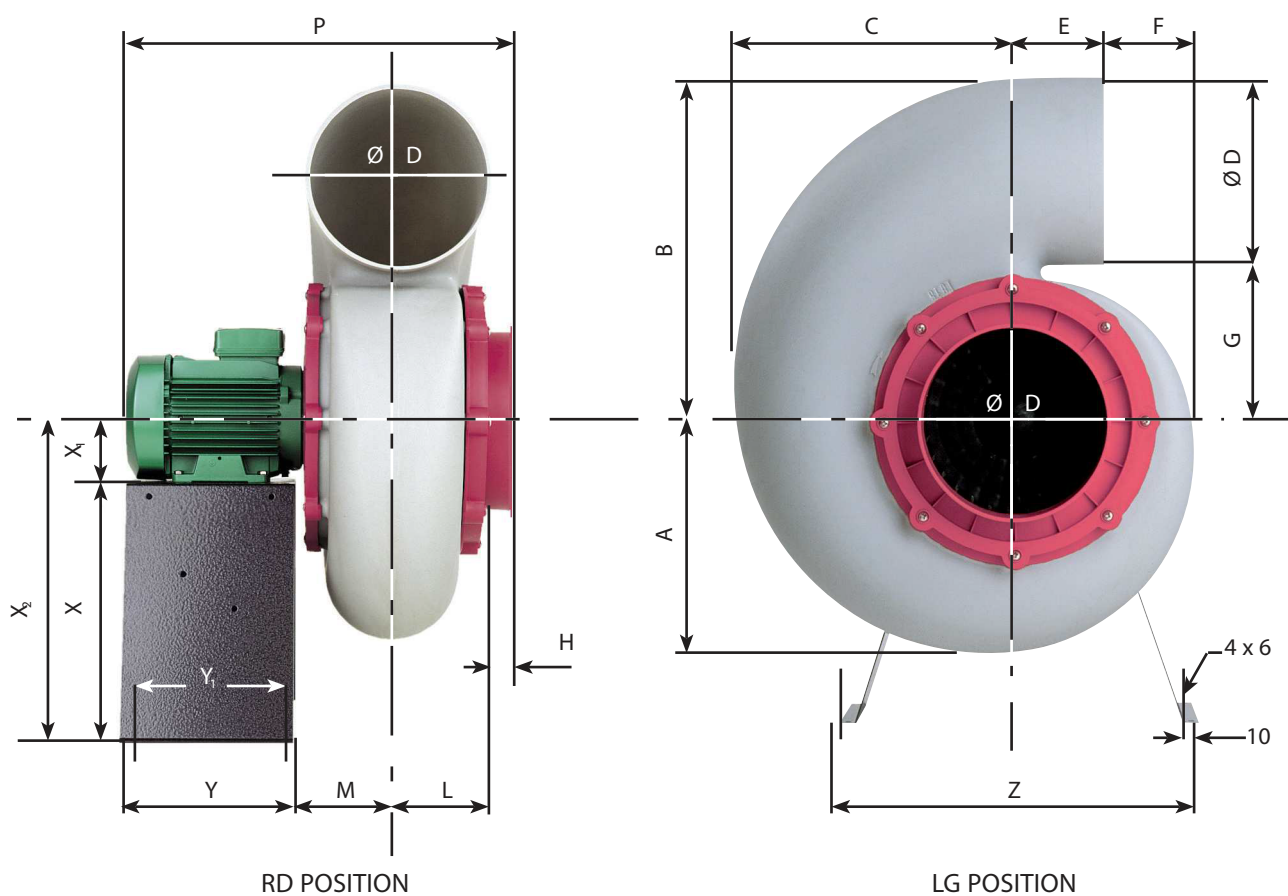


Inlet sound

| | Q _v | SP | L _{wA} | L _{pA} * | Octave band (Hz) | | | | | | | |
|------|----------------|------|-----------------|-------------------|------------------|-----|-----|-----|------|------|------|------|
| RPM | (m³/h) | (Pa) | dB(A) | dB(A) | 63 | 125 | 250 | 500 | 1000 | 2000 | 4000 | 8000 |
| 1450 | 1330 | 322 | 78 | 57 | 100 | 81 | 81 | 75 | 69 | 61 | 58 | 53 |
| 2870 | 2630 | 1261 | 93 | 72 | 115 | 96 | 96 | 90 | 84 | 76 | 73 | 68 |

















* Acoustic pressure L_p at 3 meters - Outlet acoustic data available on request

SEAT 25

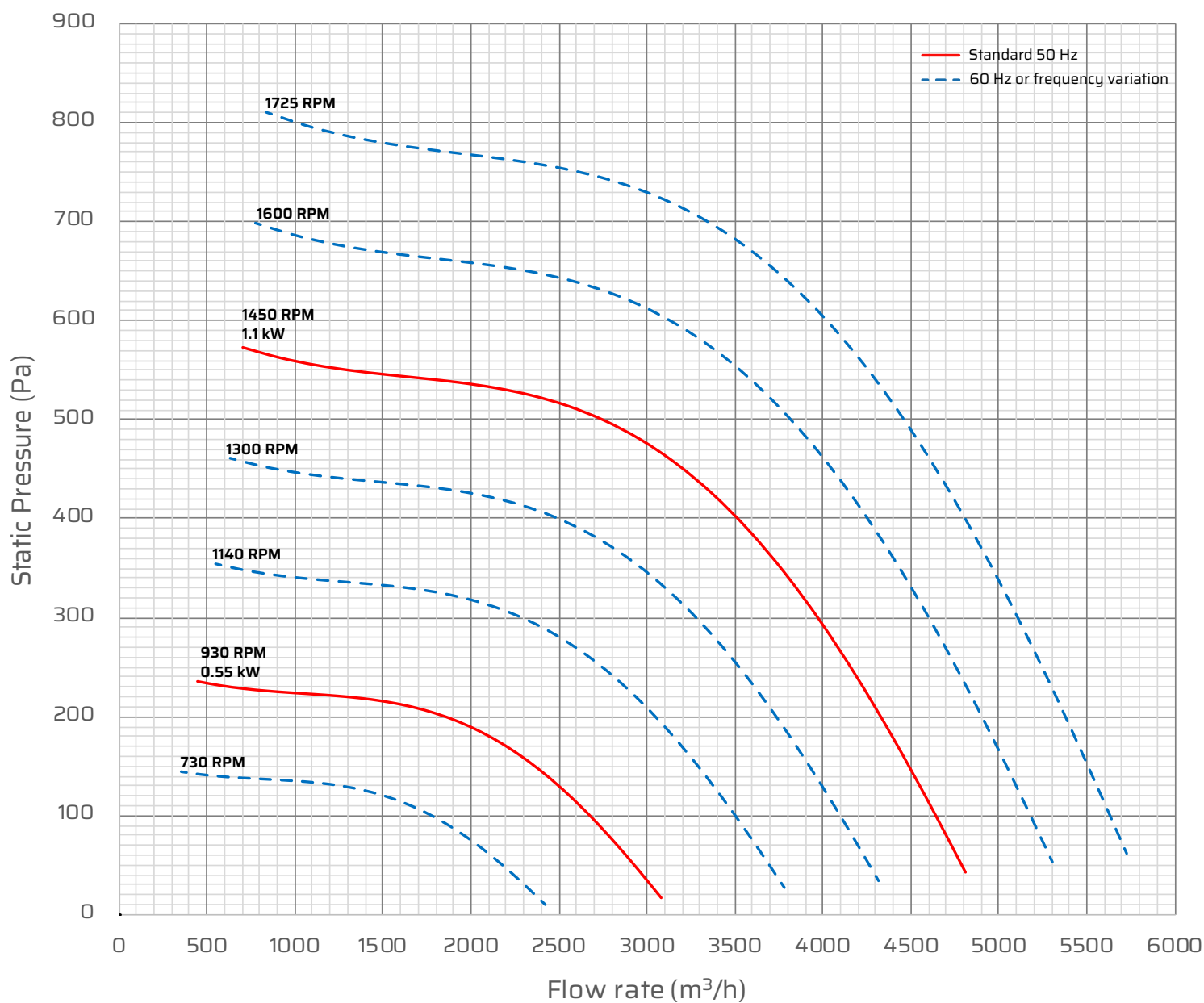


Available in ATEX version 

| Dimensional data (mm) | | | | | | | | | | | | | | | | | |
|--|-----|-----|-----|-----|-----|----|-----|----|----|-----|-----|-----|----------------|-----|-----|----------------|----------------|
| Metal stand is optional - Motor size may vary upon model | | | | | | | | | | | | | | | | | |
| RPM | A | B | C | Ø D | E | F | G | H | L | M | P | Y | Y ₁ | Z | X | X ₁ | X ₂ |
| 930 / 1450 | 248 | 365 | 310 | 200 | 103 | 92 | 165 | 35 | 95 | 105 | 430 | 180 | 160 | 420 | 300 | 71 | 371 |
| 2870 | 248 | 365 | 310 | 200 | 103 | 92 | 165 | 35 | 95 | 105 | 515 | 180 | 160 | 420 | 300 | 90 | 390 |

| Discharge positions - View from inlet side | | | | | | | |
|---|---|---|---|---|--|---|---|
|  |  |  |  |  |  |  |  |
| LG 0 | LG 45 | LG 90 | LG 135 | LG 180 | LG 225 | LG 270 | LG 315 |
|  |  |  |  |  |  |  |  |
| RD 0 | RD 45 | RD 90 | RD 135 | RD 180 | RD 225 | RD 270 | RD 315 |

SEAT 30

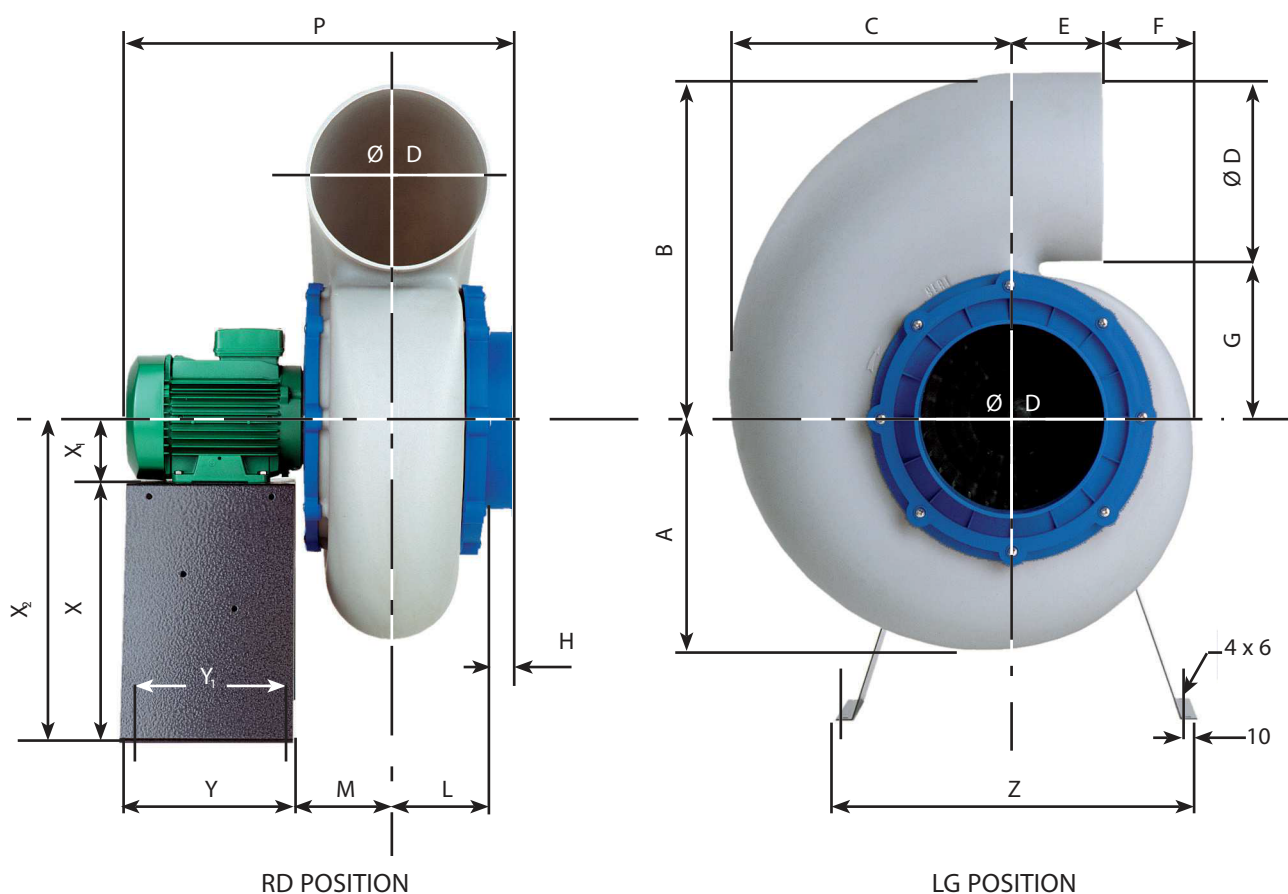


Inlet sound

| | Q _v | SP | L _{wA} | L _{pA} * | Octave band (Hz) | | | | | | | |
|------|----------------|------|-----------------|-------------------|------------------|-----|-----|-----|------|------|------|------|
| RPM | (m³/h) | (Pa) | dB(A) | dB(A) | 63 | 125 | 250 | 500 | 1000 | 2000 | 4000 | 8000 |
| 930 | 1590 | 206 | 72 | 51 | 86 | 82 | 72 | 68 | 66 | 62 | 57 | 52 |
| 1450 | 2476 | 500 | 82 | 61 | 96 | 91 | 81 | 78 | 76 | 72 | 67 | 61 |

















* Acoustic pressure L_p at 3 meters - Outlet acoustic data available on request

SEAT 30

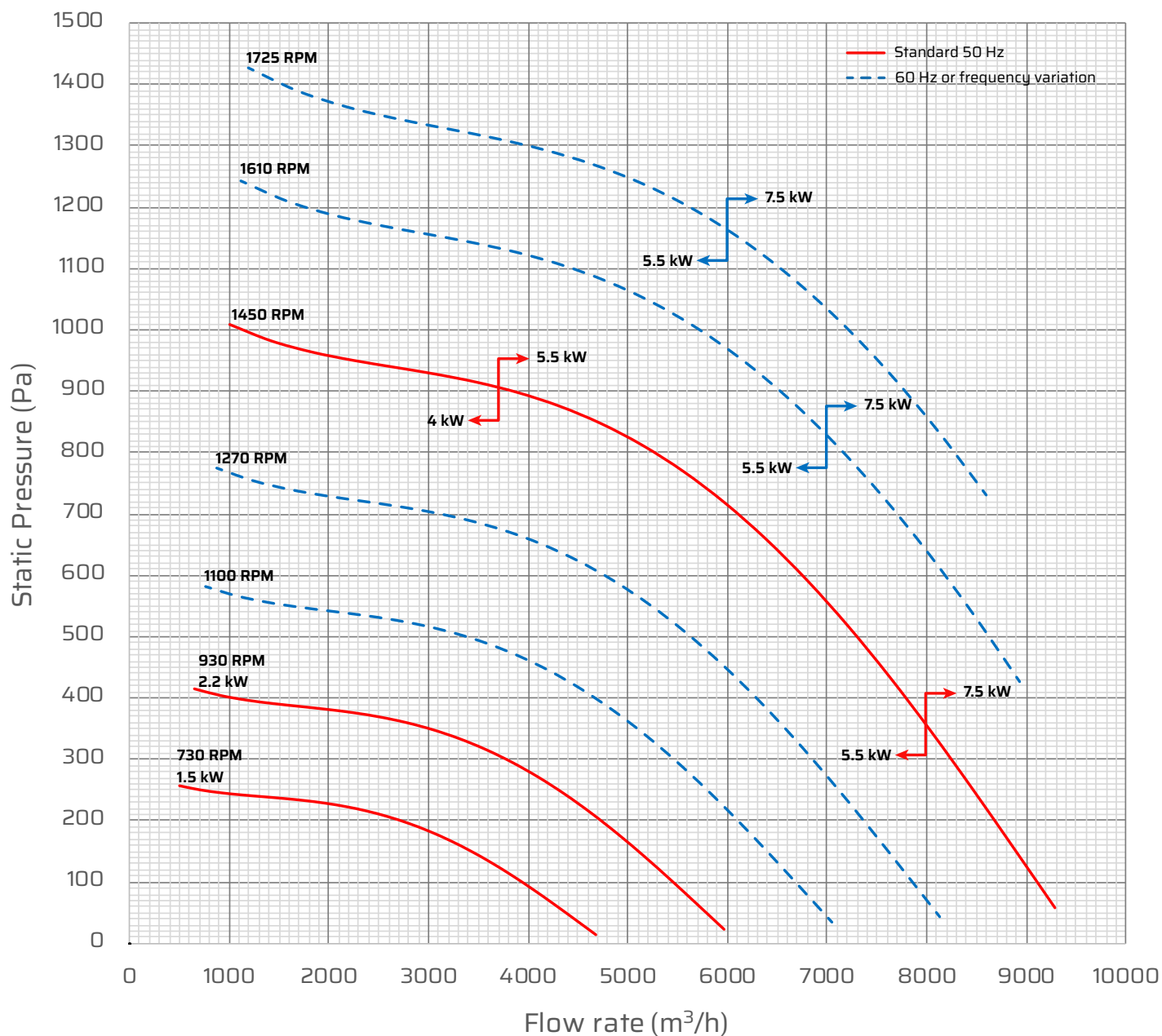


Available in ATEX version 

| Dimensional data (mm) | | | | | | | | | | | | | | | | | |
|--|-----|-----|-----|-----|-----|-----|-----|----|-----|-----|-----|-----|----------------|-----|-----|----------------|----------------|
| Metal stand is optional - Motor size may vary upon model | | | | | | | | | | | | | | | | | |
| RPM | A | B | C | Ø D | E | F | G | H | L | M | P | Y | Y ₁ | Z | X | X ₁ | X ₂ |
| 930 | 300 | 450 | 373 | 250 | 117 | 112 | 198 | 35 | 110 | 120 | 510 | 240 | 220 | 460 | 370 | 80 | 450 |
| 1450 | 300 | 450 | 373 | 250 | 117 | 112 | 198 | 35 | 110 | 120 | 540 | 240 | 220 | 460 | 370 | 90 | 460 |

| Discharge positions - View from inlet side | | | | | | | |
|---|---|---|---|---|--|---|---|
|  |  |  |  |  |  |  |  |
| LG 0 | LG 45 | LG 90 | LG 135 | LG 180 | LG 225 | LG 270 | LG 315 |
|  |  |  |  |  |  |  |  |
| RD 0 | RD 45 | RD 90 | RD 135 | RD 180 | RD 225 | RD 270 | RD 315 |

SEAT 35

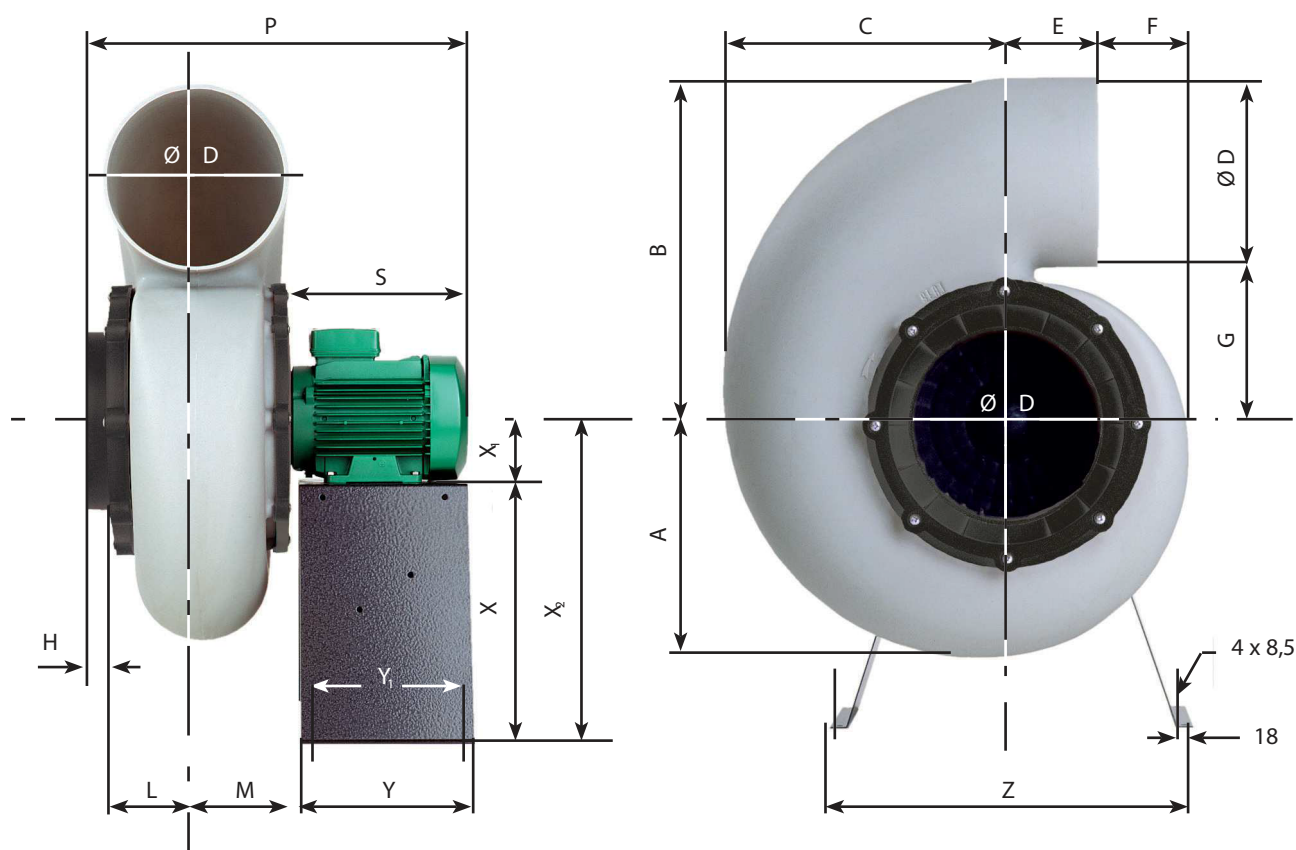


Inlet sound

| | Q _v | SP | L _{wA} | L _{pA} * | Octave band (Hz) | | | | | | | |
|------|----------------|------|-----------------|-------------------|------------------|-----|-----|-----|------|------|------|------|
| RPM | (m³/h) | (Pa) | dB(A) | dB(A) | 63 | 125 | 250 | 500 | 1000 | 2000 | 4000 | 8000 |
| 930 | 3770 | 290 | 79 | 59 | 86 | 88 | 79 | 76 | 73 | 71 | 68 | 62 |
| 1450 | 5880 | 704 | 89 | 69 | 96 | 98 | 89 | 85 | 82 | 81 | 77 | 71 |

















* Acoustic pressure L_p at 3 meters - Outlet acoustic data available on request

SEAT 35

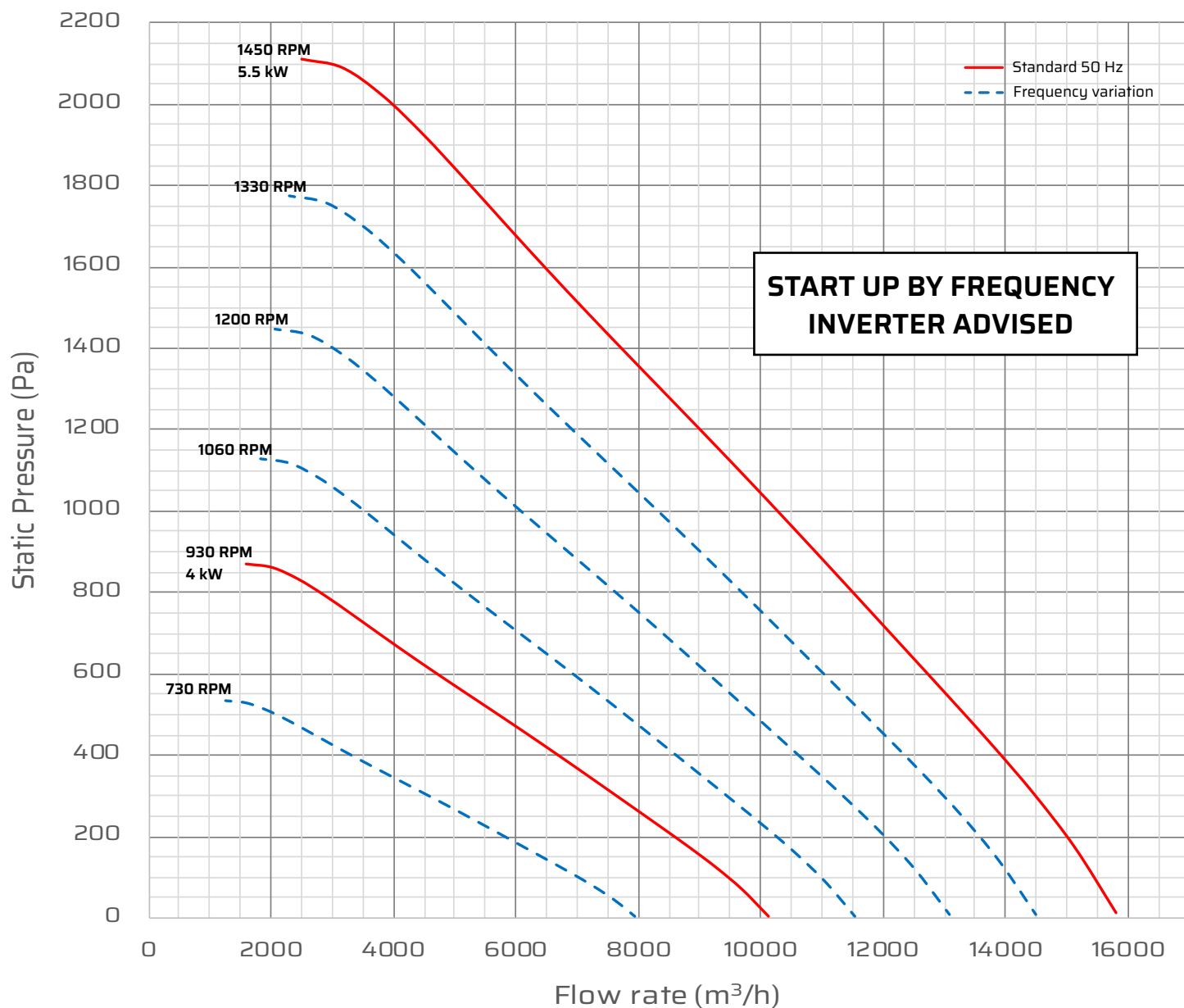


Available in ATEX version 

| Dimensional data (mm) | | | | | | | | | | | | | | | | | | |
|--|-----|-----|-----|-----|-----|-----|-----|----|-----|-----|-----|-----|-----|----------------|-----|-----|----------------|----------------|
| Metal stand is optional - Motor size may vary upon model | | | | | | | | | | | | | | | | | | |
| RPM | A | B | C | Ø D | E | F | G | H | L | M | P | S | Y | Y ₁ | Z | X | X ₁ | X ₂ |
| 930 | 370 | 570 | 450 | 315 | 130 | 170 | 255 | 60 | 150 | 170 | 724 | 334 | 350 | 314 | 600 | 468 | 112 | 580 |
| 1450 | 370 | 570 | 450 | 315 | 130 | 170 | 255 | 60 | 150 | 170 | 792 | 402 | 350 | 314 | 600 | 468 | 112 | 580 |
| 1450 ATEX ou 7.5 kW | 370 | 570 | 450 | 315 | 130 | 170 | 255 | 60 | 150 | 170 | 822 | 432 | 350 | 314 | 600 | 468 | 132 | 600 |

| Discharge positions - View from inlet side | | | | | | | |
|---|---|---|---|---|--|---|---|
|  |  |  |  |  |  |  |  |
| LG 0 | LG 45 | LG 90 | LG 135 | LG 180 | LG 225 | LG 270 | LG 315 |
|  |  |  |  |  |  |  |  |
| RD 0 | RD 45 | RD 90 | RD 135 | RD 180 | RD 225 | RD 270 | RD 315 |

SEAT 50

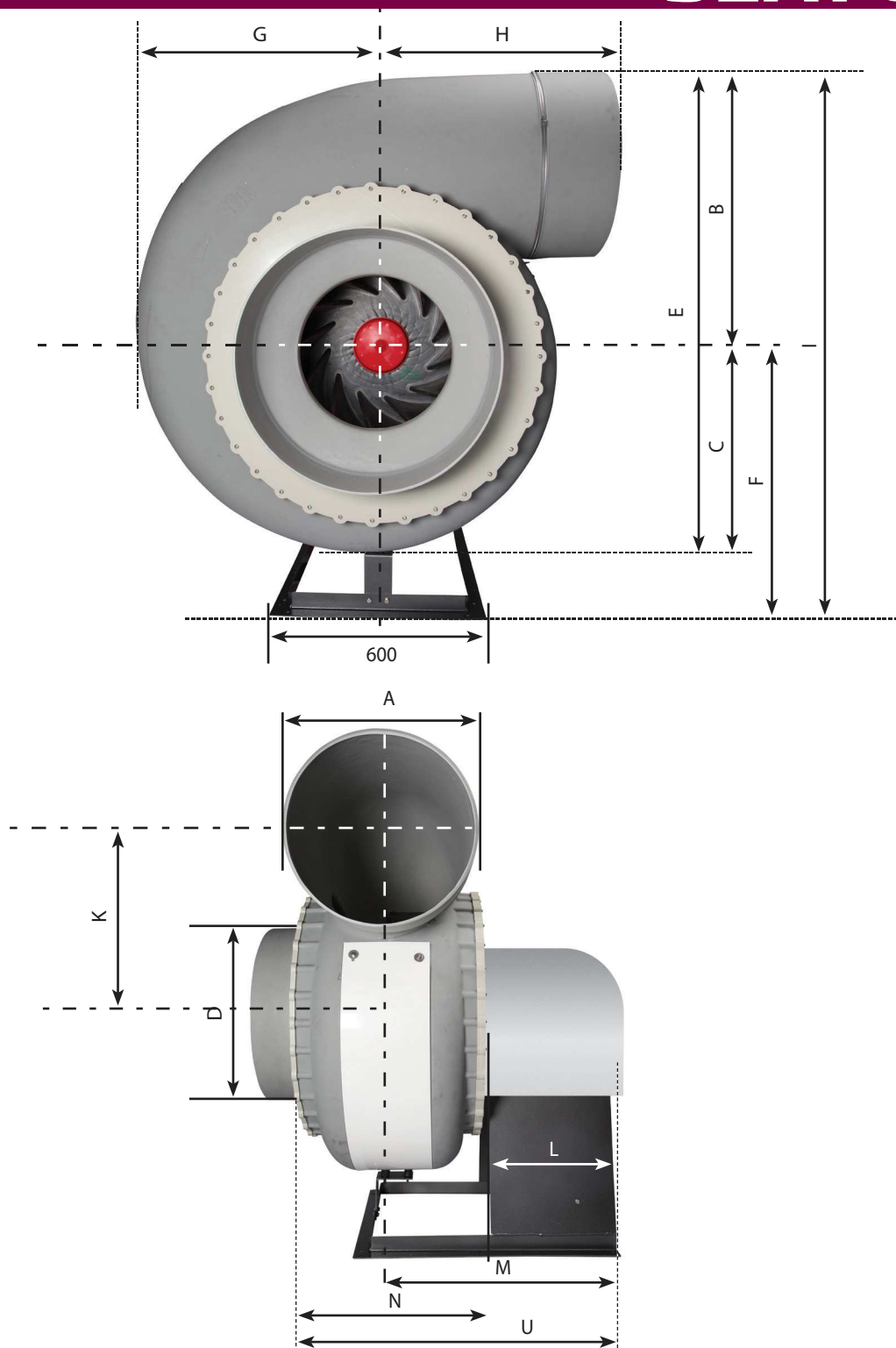


Inlet sound

| | Q _v | SP | L _w A | L _p A * | Octave band (Hz) | | | | | | | |
|------|---------------------|------|------------------|--------------------|------------------|-----|-----|-----|------|------|------|------|
| RPM | (m ³ /h) | (Pa) | dB(A) | dB(A) | 63 | 125 | 250 | 500 | 1000 | 2000 | 4000 | 8000 |
| 930 | 3165 | 723 | 79 | 58 | 95 | 87 | 82 | 73 | 71 | 65 | 58 | 53 |
| | 5100 | 533 | 78 | 58 | 93 | 83 | 80 | 74 | 74 | 64 | 57 | 52 |
| 1450 | 4935 | 1757 | 88 | 68 | 105 | 96 | 92 | 83 | 81 | 75 | 68 | 63 |
| | 7950 | 1300 | 88 | 67 | 103 | 93 | 90 | 83 | 84 | 74 | 67 | 62 |

* Acoustic pressure L_p at 3 meters - Outlet acoustic data available on request

SEAT 50



Discharge positions View from inlet side



LG 0



LG 90

Dimensional data (mm)

Metal stand is optional - Motor size may vary upon model

| A | D | B | C | E | F | G | H | I | I LG90 | K+F | K | L | M | N | U |
|-----|-----|-----|-----|------|-----|-----|-----|------|-----------|------|-----|-----|-----|-----|------|
| 500 | 600 | 765 | 550 | 1315 | 740 | 660 | 610 | 1350 | 1505 | 1255 | 515 | 400 | 715 | 620 | 1020 |

A WORLDWIDE PRESENCE



Distributes in
more than
80 COUNTRIES



3 SITES

Present on all continents, we currently
generate our turnover in 80 countries.

THEY TRUST US

GTG

atsource

FläktGroup

**LES INNOVATIONS
SAMIN**
SAMIN SCIENCE CO., LTD.

**Ventilation
LTI**

AXAIR
FANS UK LIMITED

pHSCIENTIFIC

NICOLAY

Lab
DISTRIBUTIONS

Lindab

DistriLab

KAFÉ S.A.
VENTILATION CENTER

**SCIENCE
BYDESIGN**

FUMEX

**TechAdvice
SERVICES**

LACHEM-HOOD KET

SERVIER

cea

ifp
Innovation
Energy
Environment

SANOFI

70 Impasse Jean Mermoz
Parc Technologique Delta Sud
09340 Verniolle - FRANCE

Phone : +33(0)5 61 69 84 43
Fax : +33(0)5 61 67 86 03
Email : info@seat-ventilation.com
in SEAT VENTILATION SAS

www.seat-ventilation.com

Member of CETIAT and AMCA

