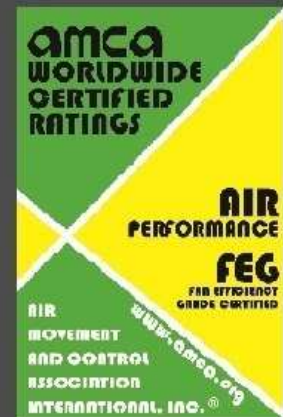


B-571-1  
January 2021



Kunststoff Mfg. Co., Ltd. (KMC) certifies that the FRP Fume Exhausters shown herein are licensed to bear the AMCA Seal. The ratings shown are based on tests and procedures performed in accordance with AMCA Publication 211 and comply with the requirements of the AMCA Certified Ratings Program.

# FRP FUME EXHAUSTERS

FRP耐酸碱排风机



# Backwardly Inclined Wheels ▶

## 后倾式叶轮

中壓 [MP]  
Medium Pressure [MP]



FRP 耐酸碱排风机的后倾式叶轮提供了高效率与安静的操作并有着严禁超载马力的特性。全机材质为高质量耐腐蚀乙烯基酯树脂。另外轮毂、轴心等其他紧固件皆有 FRP 包覆。

FRP Fume Exhauster backwardly inclined wheels provide high efficiency and quiet operation with a non-overloading horsepower characteristic. Made of premium-quality, corrosion-resistant vinyl ester resin. Metal hub, shaft, and stainless-steel fasteners are encapsulated in full-thickness FRP.

## Available in Eight Sizes

有八種尺寸供選擇: 18", 24", 30", 36", 42", 48", 54" & 60"

## ► Accessories / Options

### 标准配备 / 选用配备

#### 标准配备：

- 出口法兰 - 便于直接连接。
- 入口法兰 - 一般型或钻孔。
- 排水口 - 在排风机外壳的最低点设计 1" PVC 排水管与接头。
- 检查窗口 (与清洁口二选一) - 便于检查风扇内部。位于驱动侧的外壳上 2 或 10 点钟方向，以及 3 或 9 点钟方向。
- 清洁口 (与检查窗口二选一) - 为 181 和更大尺寸的风机内部清洁和检查提供解决方案。
- 防雨罩 / 皮带防护罩 - 提供电机和变频器的保护，并可容易地取出检查和维修。百叶窗式的侧板提供了充足的电机通风。
- 安全配置 - 皮带护盖、轴、轴承护盖可用于 Arr. 1、Arr. 9F 型风机，联轴器罩则用于 Arr. 8 型风机。
- 轴封 - 标准轴封材质为 Neoprene，耐蚀性佳，其构造能紧密贴合轴心，于外部加封 PP 结构便于固定。耐温 -20~80dC。
- 乙烯基酯 - 为特定腐蚀性物质提供额外的保护。
- 窄幅设计 - 可减少 181 或更大尺寸之全宽中压风机之宽度，仅留 67%~75%，可使最大安全转速增加，宽度减少。
- 轴承加油管 - 302 以上风机可提供。
- 耐候型涂装 - 银灰色 (如需其他颜色请提前告知)。

#### 马达连接方式：

- 皮带式 (Arr. 1, Arr. 9F)
- 直截式 (Arr. 8)

#### Accessories:

- Flanged outlet drilling - For ease of direct connection.
- Flanged inlet - Plain or drilled.
- Drain - Threaded PVC drain with PVC plug, 1" npt, at lowest point of housing scroll.
- Inspection port - Allows examination of fan interior. Located on drive-side half of housing at 2 or 10 o'clock, and at 3 or 9 o'clock.
- Cleanout door - Provides access for cleaning and inspecting fan interior.
- Weather cover/ Belt guard - Provides motor and drive protection, and can be easily removed for inspection and maintenance. Louvered side panels provide ample motor ventilation.
- Safety equipment - Belt guards and shaft and bearing guards are available for Arr. 1 and 9-F fans, and coupling guards for Arr. 8 fans.
- Shaft seal - Standard shaft seal element is Neoprene in PP casing. It offers good corrosion resistance ability. Temperature range is -20~80dC.
- All-vinyl ester airstream - Provides additional protection from certain corrosives.
- Narrow-width construction - To optimize the point of operation. Available on all sizes to 75% of full width on medium pressure fans and 67% on high pressure fans. Maximum safe wheel speed increases as width decreases.
- Weather proof coating - Sizes 482 through 602.
- Standard color - Silver Gray (Other colors are available. Just advise when order.)

#### Motor Arrangement:

- Belt drive (Arr. 1 or Arr. 9F)
- Coupling (Arr. 8)

**选用配备：**

- 油浴式轴承
- 镀锌铁架
- 白铁铁架
- 马达 (一般或变频)
- 轴封 (Viton or Teflon)
- 避震器 - 使用弹簧或橡胶作为避震器。
- 避震相对底座

**如蒙惠顧，請通知下列資料：**

- 风量 - 一般以入口风量为准，以 CMM、CMH 或 CFM 表示。
- 静压 - 以 mmAq、inwg 或 Pa 表示。
- 温度 - 指吸入气体之温度，以 dC(摄氏) 或 dF(华氏) 表示。
- 输送之气体种类，成分是否含有粉尘。
- 马达电压、极数，是否用于变频驱动。
- 出口方向，以面对皮带轮表示，以下表列出几种出口方向可供选择。

**Options:**

- Galv. steel support
- SUS or SS support
- Motor (Gen or Inv. duty)
- Shaft seal(Viton or Teflon)
- Vibration isolator - Vailable with spring or rubber-in-shear [R-I-S] isolators.
- Isolation Base

**Please provide below information when order:**

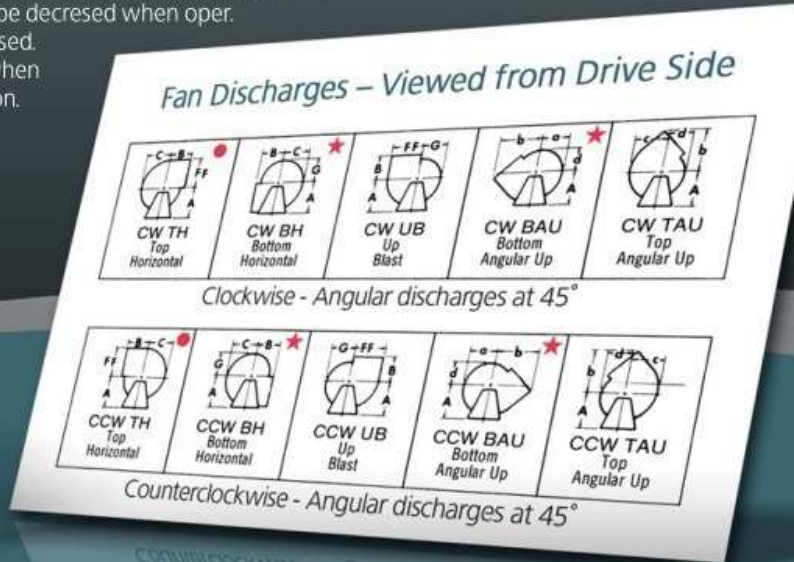
- Air Volume: in CMM, CMH or CFM
- Static Pressure: in mmAq, inwg or Pa.
- Operating Temperature: in d C or d F.
- Type of Handling air.
- Power supply, General purpose or Inverter Duty motor.
- Fan rotation and discharge. Below is the selection of fan rotation and discharge. (view from drive side.)

**选用风机步骤：**

1. 确定在常温下的风量及静压。
2. 依后方性能表选择风机型号、转速、BHP。
3. 风机安全转速会依使用温度增高而下降，若高温运转请来电洽询。

**Fan selection:**

1. Determine Air volume and static pressure at standard condition (21dC).
2. Select fan size, rpm, BHP from below capacity tables.
3. Fan safe speed will be decreased when oper. temperature increased. Please consult us when high temp Operation.





### 安全建議

KMC 可提供安全配件，但选择适当的设备是系统设计师的责任。他应熟悉该安装或该应用流程，提供所有外露部件之保护并确保能获得该气流效率。KMC 或其销售代表虽在不同立场，但皆会提出相同的建议。使用者或安装者应详阅 AMCA 所建议之「空气流动设备安全守则」。

### SAFETY EQUIPMENT

Safety accessories are available from KMC, but selection of the appropriate devices is the responsibility of the system designer who is familiar with the particular installation, or application, and can provide for guards for all exposed moving parts as well as protection from access to high-velocity airstreams. Neither KMC nor its sales representatives is in a position to make such a determination. Users and/ or installers should read "Recommended Safety Practices for Air Moving Devices" as published by the Air Movement and Control Association International, Arlington Heights, Illinois.

Performance

风机选用型号与性能

Table for SIZE 182 MP: Wheel diameter: 18.25", Inlet diameter: 18" I.D., Maximum BHP = .409 [rpm/1000]^3. Includes specifications for wheel circumference and fan outlet area. Grid contains performance data for CFM, OV, RPM, BHP across various SP stages (2" to 19").

Table for SIZE 242 MP: Wheel diameter: 24.5", Inlet diameter: 24" I.D., Maximum BHP = 1.99 [rpm/1000]^3. Includes specifications for wheel circumference and fan outlet area. Grid contains performance data for CFM, OV, RPM, BHP across various SP stages (2" to 16").

Table for SIZE 302 MP: Wheel diameter: 30", Inlet diameter: 30" I.D., Maximum BHP = 6.17 [rpm/1000]^3. Includes specifications for wheel circumference and fan outlet area. Grid contains performance data for CFM, OV, RPM, BHP across various SP stages (2" to 16").

Table for SIZE 362 MP: Wheel diameter: 36.5", Inlet diameter: 36" I.D., Maximum BHP = 15 [rpm/1000]^3. Includes specifications for wheel circumference and fan outlet area. Grid contains performance data for CFM, OV, RPM, BHP across various SP stages (2" to 16").

Performance certified is for installation Type B: Free inlet, Ducted outlet. Power rating (BHP) does not include transmission losses. Performance ratings do not include the effects of appurtenances (accessories).



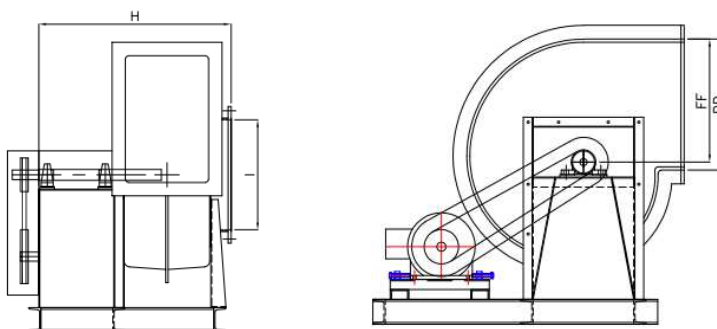
# DIMENSIONS (MM) 外观尺寸

## SIZES 182~602

### ARRANGEMENT 1 AND 9F FANS

Size	A	B	C	DD	FF	G	L	H	*I	a	b
182	652	407	518	527	495	441	1140	800	470	502	680
242	827	517	679	705	667	575	1588	1060	622	657	870
302	983	597	822	864	816	695	1650	1295	568	797	1035
362	1166	737	997	1054	994	845	2171	1571	930	965	1264
422	1318	826	1140	1213	1140	965	2321	1835	1086	1064	1448
482	1521	927	1295	1384	1305	1095	2526	1976	1238	1254	1638
542	1699	1079	1464	1565	1476	1238	2912	2163	1397	1368	1864
602	1838	1168	1613	1730	1632	1362	3200	2479	1549	1461	2042

Size	c	d
182	572	400
242	752	518
302	911	625
362	1105	772
422	1175	864
482	1435	981
542	1511	1108
602	1584	1154



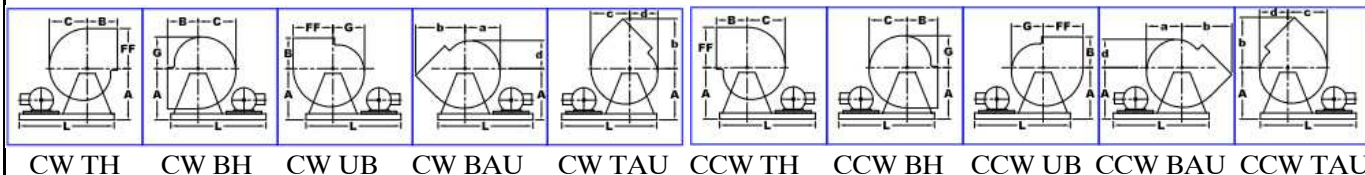
\* I is OD of inlet collar (I 为外径)

Tolerance: +- 3mm

Note: Arrangement 8 fan (with coupling drive) pedestal dimensions are dependent on motor size, please consult us when necessary.  
注:联轴器传动风车马达座尺寸依马达尺寸而有所变动,相关外观图纸依询价规格另行提供.

### FAN DISCHARGES -VIEWD FROM DRIVE SIDE

风机方向-面对皮带轮

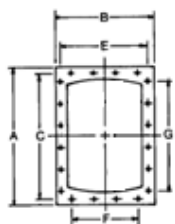


We reserve the right to change designs and specifications without notice.

本公司保有规格变动之权利

### FLANGED OUTLET (MM)

Furnish without holes  
Available with holes drilled  
as shown  
标准为不钻孔,若需钻孔如图示

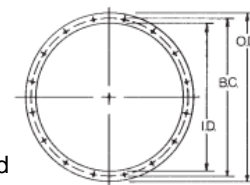


No. of holes on 4" centers

Tolerance: +- 3mm

### FLANGED INLET (MM)

Furnish without holes  
Available with holes drilled  
as shown  
标准为不钻孔,若需钻孔如图示



Tolerance: +- 3mm

Size	A	B	C	E	F	G	O.D.	B.C.	I.D.	HOLE DIA	HOLE NO.
182	638	457	603	422	102	152	568	533	457	11	16
242	816	575	781	540	102	203	721	686	610	11	20
302	975	679	940	645	152	254	873	838	762	11	28
362	1165	803	1130	768	152	305	1026	991	914	11	32
422	1375	959	1315	899	203	305	1178	1143	1067	14	36
482	1546	1073	1486	1013	254	356	1381	1321	1219	14	44
542	1727	1191	1667	1130	254	406	1534	1473	1372	14	44
602	1892	1302	1832	1241	305	457	1686	1626	1524	14	52





鴻中企業股份有限公司  
Kunststoff Mfg. Co., Ltd.

Tel: 02-2642-0679  
Fax: 02-2643-1038

新北市汐止區保新街169號  
No.169, Pao Hsin Street, Hsi Chih Dist.,  
New Taipei City, Taiwan  
Email: [kcmp@ms22.hinet.net](mailto:kcmp@ms22.hinet.net)