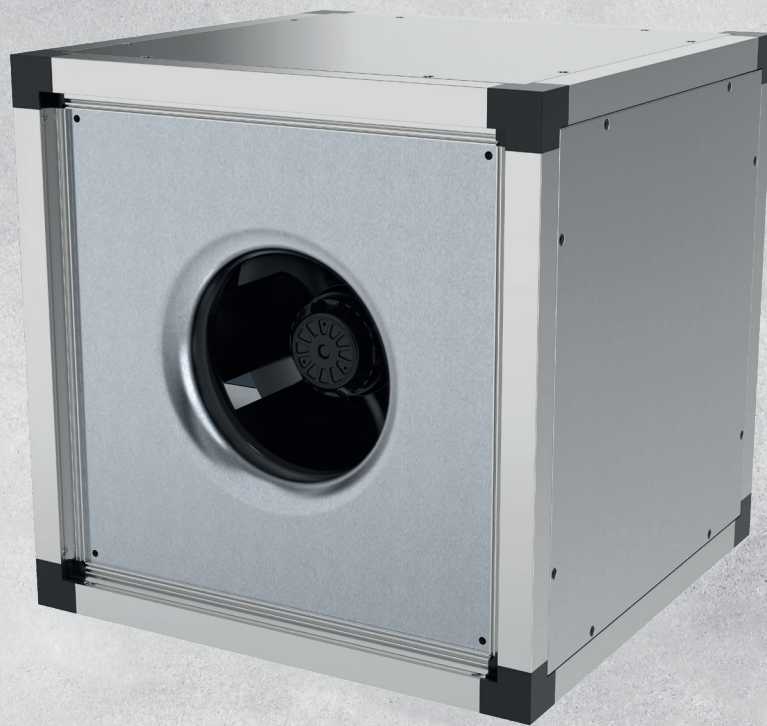
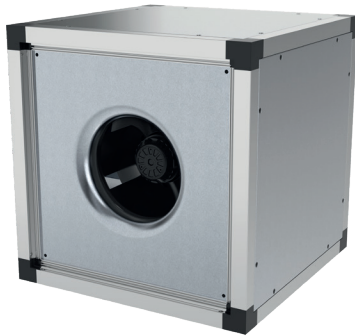


# MUB EC

AMCA





## Casing

Self-supporting aluminium frame construction with high impact resistant PA6 corners. 20 mm or 30 mm mineral wool acoustic and thermal insulation.

## Motor

Energy-saving, highly efficient EC external rotor motors. Impeller geometry Centrifugal impeller with backward curved blades.

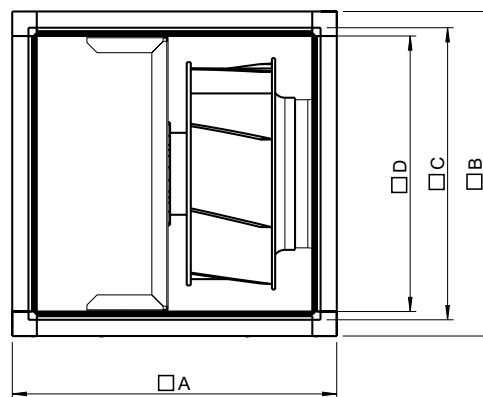
## Output control

100 % controllable via a 0-10 V signal. The fans are equipped with a potentiometer (0-10 V), installed in the terminal box. The speed can be easily adjusted should the installation require a different operation point.

## Motor protection

The motor protection is integrated in the motor electronics.

## Dimension



Model	□ A		□ B		□ C		□ D	
	20 mm panel	30 mm panel	20 mm panel	30 mm panel	20 mm panel	30 mm panel	20 mm panel	30 mm panel
MUB 025 315EC	500	520	500	520	420	420	378	378
MUB 025 355EC	500	520	500	520	420	420	378	378
MUB 042 400EC	670	690	670	690	590	590	548	548
MUB 042 450EC	670	690	670	690	590	590	548	548
MUB 042 450EC-K	670	690	670	690	590	590	548	548
MUB 042 500 EC	670	690	670	690	590	590	548	548
MUB 062 560EC	800	820	800	820	720	720	678	678
MUB 062 630EC	800	820	800	820	720	720	678	678
MUB 100 630EC	1000	1020	1000	1020	920	920	878	878
MUB 100 710EC	1000	1020	1000	1020	920	920	878	878

Dimensions are in mm



## Performance Data

Model	Article. no.		Voltage	Phase	Frequency	Rated power	Rated amps	Impeller speed	Sound power (*)
	20 mm	30 mm	V	~	HZ	W	A	r.p.m.	dB(A)
MUB 025 315EC	79206	235423	220-240	1	50/60	169	1.34	1,784	74
MUB 025 355EC	79207	235424	220-240	1	50/60	526	2.21	1,806	80
MUB 042 400EC	79208	235425	220-240	1	50/60	537	2.29	1,476	78
MUB 042 450EC	79209	235426	380-415	3	50/60	991	1.45	1,554	83
MUB 042 450EC-K	84601	235435	220-240	1	50/60	768	3.22	1,415	81
MUB 042 500 EC	79231	235427	380-415	3	50/60	1,315	1.96	1,340	84
MUB 062 560EC	79232	230500	380-415	3	50/60	2,623	3.79	1,704	89
MUB 062 630EC	79233	230504	380-415	3	50/60	3,172	4.60	1,650	90
MUB 100 630EC	37400	230507	380-415	3	50/60	2,924	4.30	1,139	88
MUB 100 710EC	37401	235399	380-415	3	50/60	6,434	8.96	1,205	93

(\*) Sound power values ratings shown at freeblowing at 0 Pa max rpm.

Performance certified is for installation type A: free inlet; free outlet.

Speed (RPM) shown is nominal. Performance is based on actual speed of test.

Performance ratings do not include the effects of appurtenances (accessories).

The sound ratings shown are in decibels, referred to 10<sup>-12</sup> Watts calculated AMCA standard 301. Values shown are for inlet Lw<sub>i</sub>A for Installation type A.

Ratings do not include the effect of duct end correction.

Model	Article. no.		Air flow [m³/h]							
	20 mm	30 mm	0 Pas (*)	100 Pas (*)	200 Pas (*)	300 Pas (*)	400 Pas (*)	500 Pas (*)	600 Pas (*)	Max Pas (*)
MUB 025 315EC	79206	235423	2580/2339	2108/1863	1508/1359	1000/933	561/533	61/-	-	500/500
MUB 025 355EC	79207	235424	3992/3436	3711/3069	3384/2738	2945/2334	2437/1872	1784/1298	-	603/606
MUB 042 400EC	79208	235425	4645/4326	4322/3982	3925/3564	3358/3039	2434/2301	-	-	534/527
MUB 042 450EC	79209	235426	7108/6568	6940/6398	6445/5858	5866/5218	5173/4458	4289/3481	2899/1899	641/641
MUB 042 450EC-K	84601	235435	6753/6110	6388/5819	5775/5228	5048/4454	4135/3423	2852/1944	-	542/546
MUB 042 500 EC	79231	235427	8489/6995	7604/6633	6925/6050	6201/5434	5433/4780	4589/4099	3608/3304	800/787
MUB 062 560EC	79232	230500	10436/9544	10060/9332	9708/9057	9246/8690	8760/8277	8248/7829	7703/7336	1192/1161
MUB 062 630EC	79233	230504	14246/12820	13594/12250	13133/11703	12502/11084	11819/10417	11102/9691	10285/8907	1049/1057
MUB 100 630EC	37400	230507	17399/16299	16832/15827	15804/14917	14734/13872	13575/12629	12254/11070	10611/8933	813/795
MUB 100 710EC	37401	235399	26742/25008	25732/24063	24644/23124	23543/22011	22415/20841	21183/19495	19947/18097	1063/1110

(\*) Second value shows straight air flow

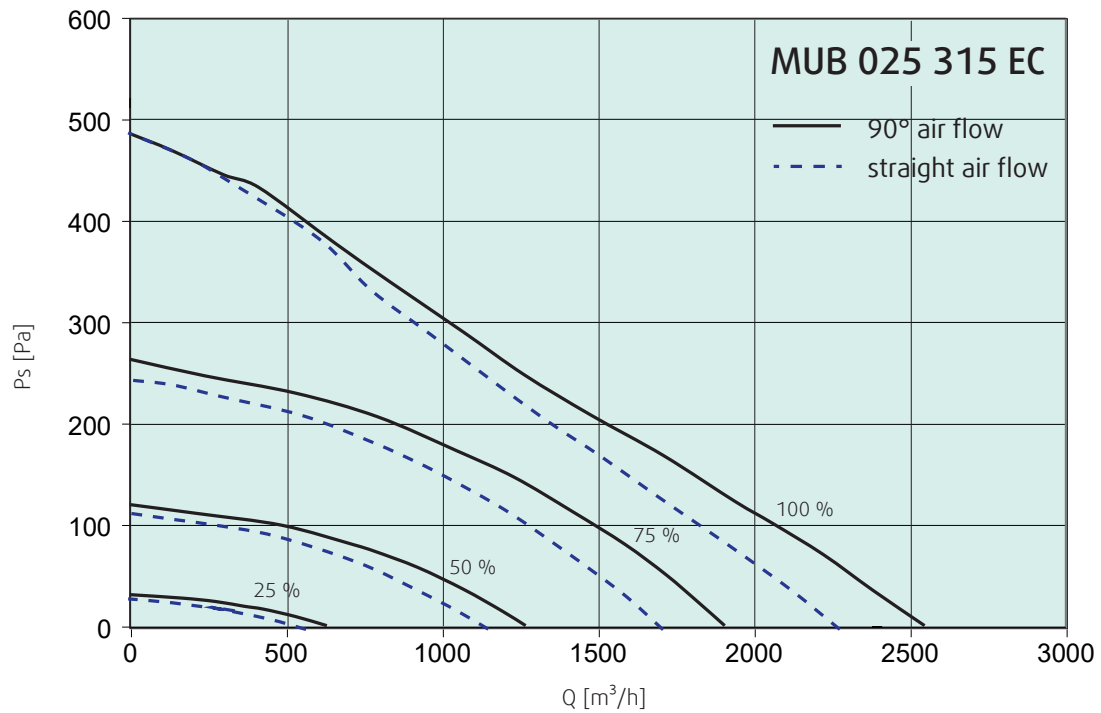


Systemair GmbH certifies that the MUB-EC series shown herein is licensed to bear the AMCA seal. The ratings shown are based on tests and procedures performed in accordance with AMCA Publication 211 and AMCA Publication 311 and comply with the requirements of the AMCA Certified Ratings Program.

## MUB 025 315 EC

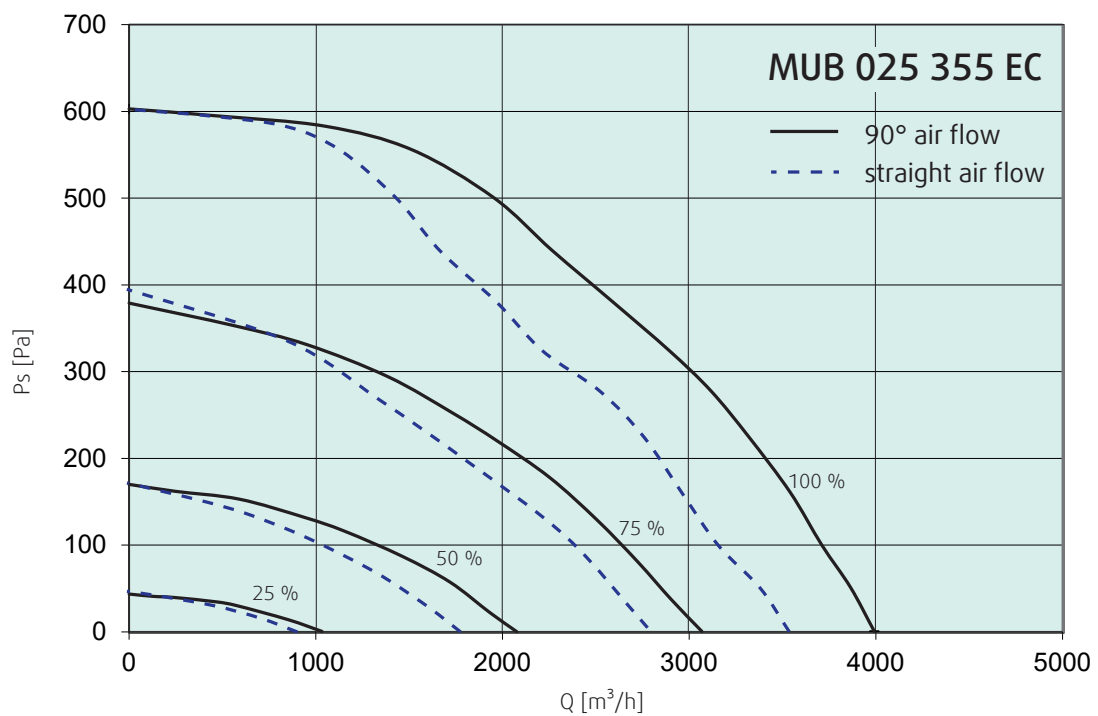


### Performance Data



## MUB 025 355 EC

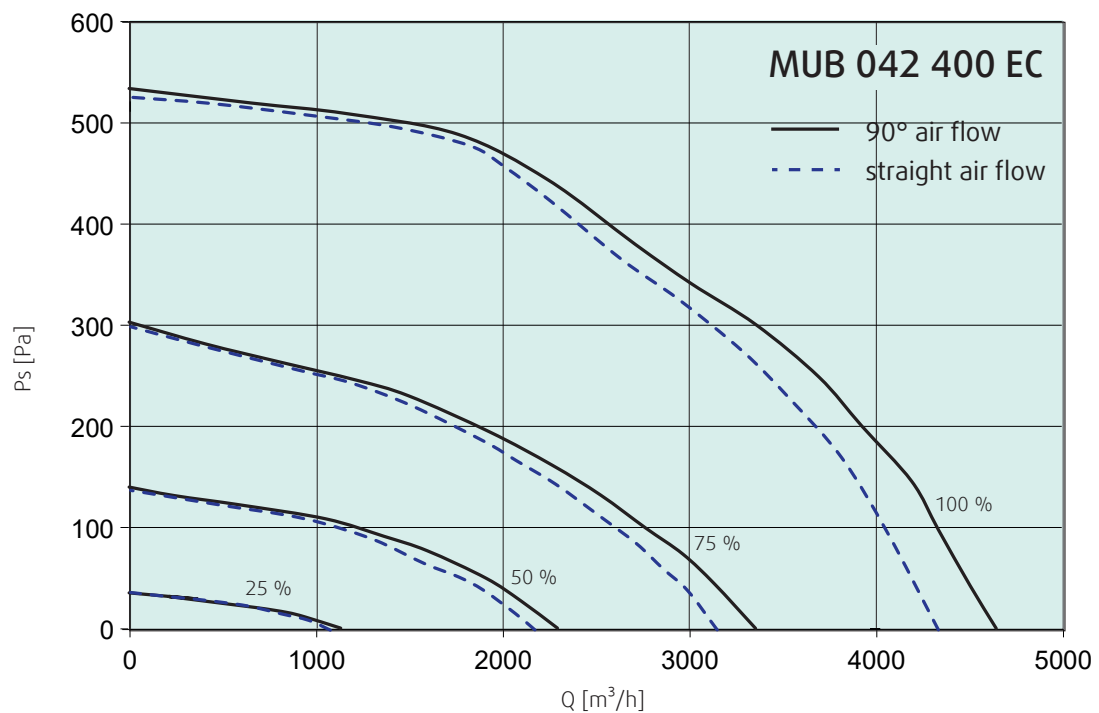
### Performance Data



## MUB 042 400 EC

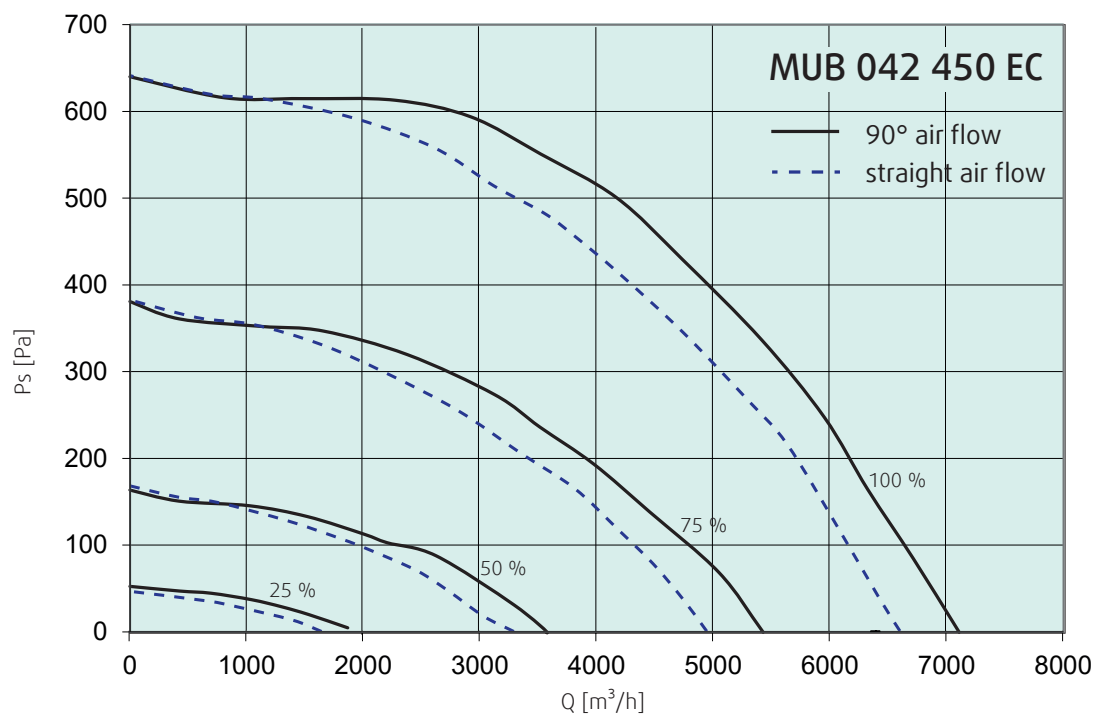


### Performance Data



## MUB 042 450 EC

### Performance Data

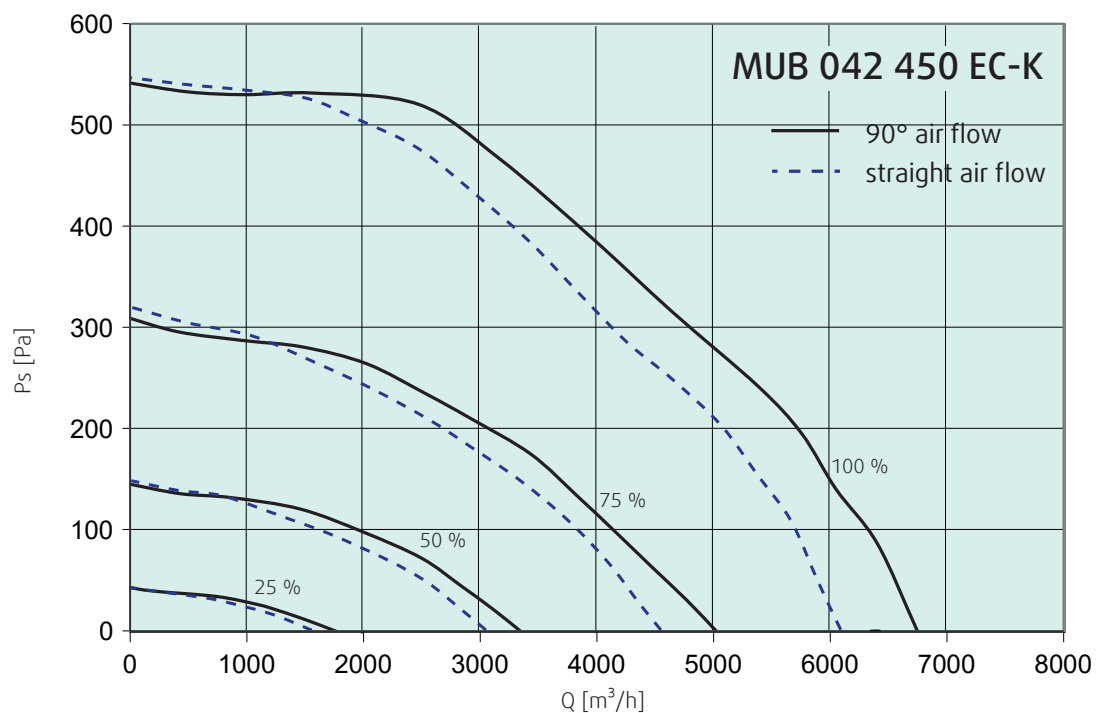




## MUB 042 450 EC-K

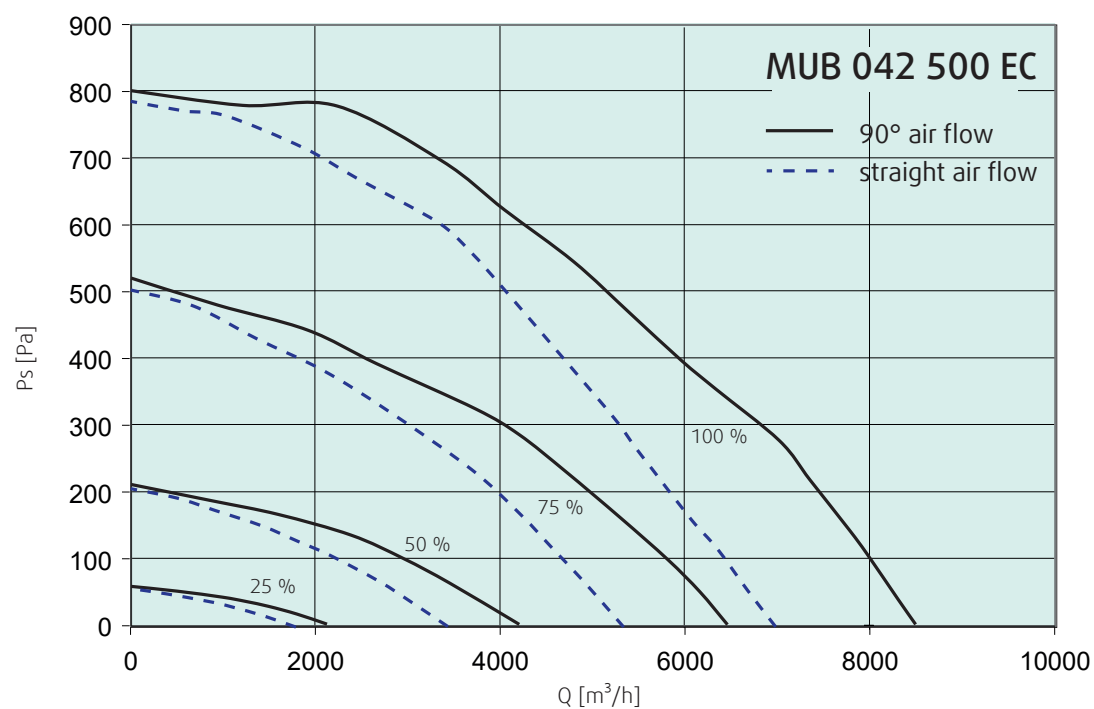


### Performance Data



## MUB 042 500 EC

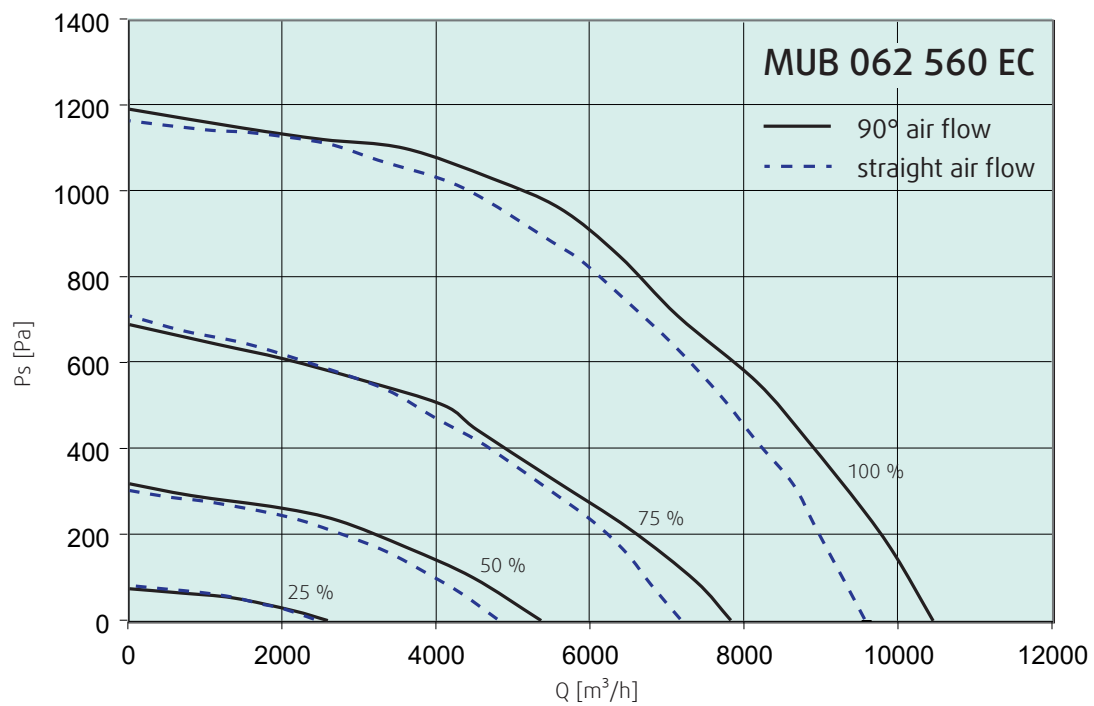
### Performance Data



## MUB 062 560 EC

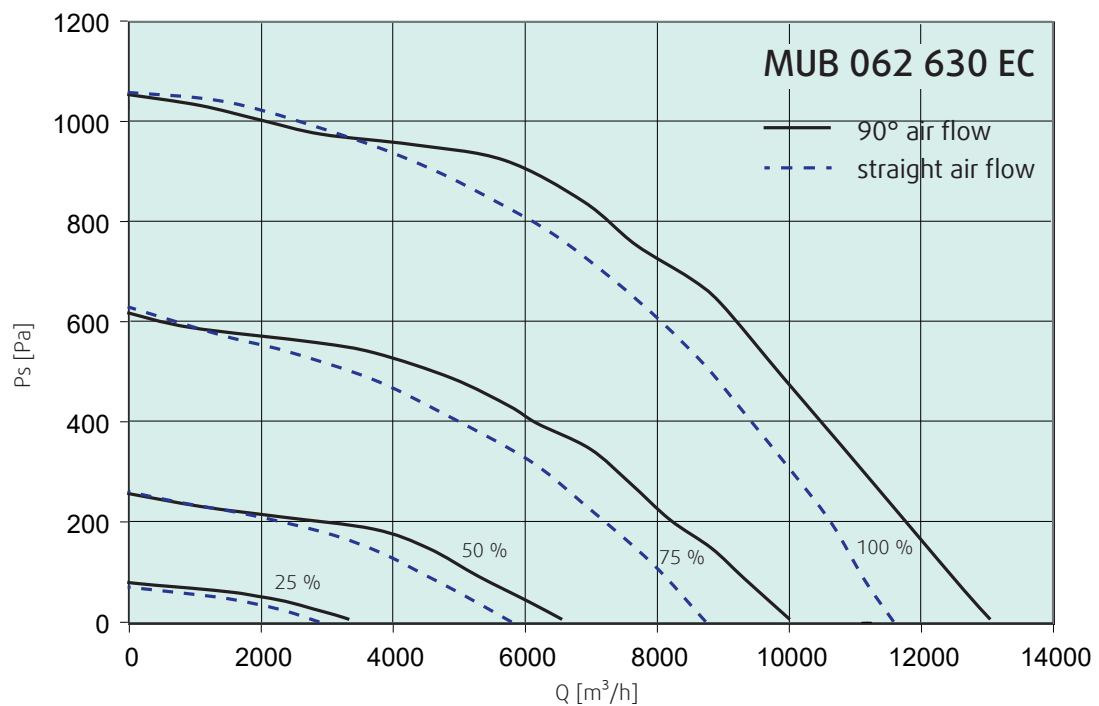


### Performance Data



## MUB 062 630 EC

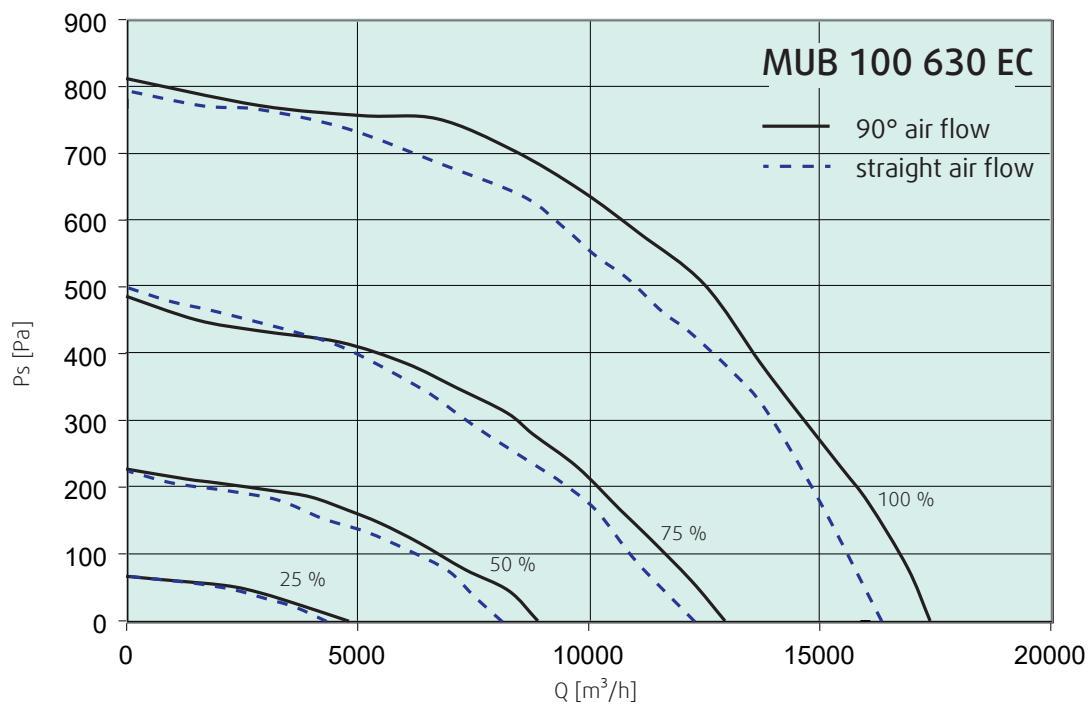
### Performance Data



## MUB 100 630 EC



### Performance Data



## MUB 100 710 EC

### Performance Data

