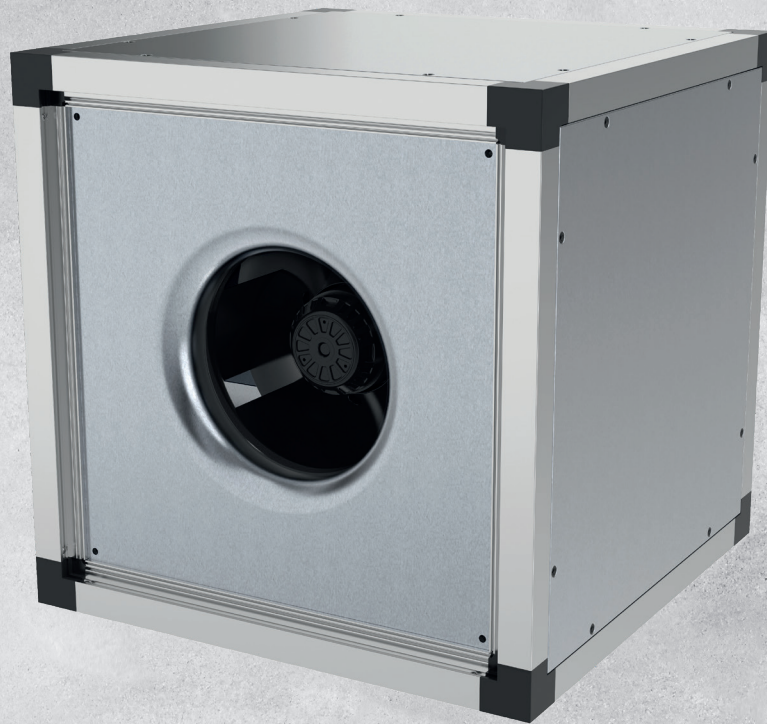
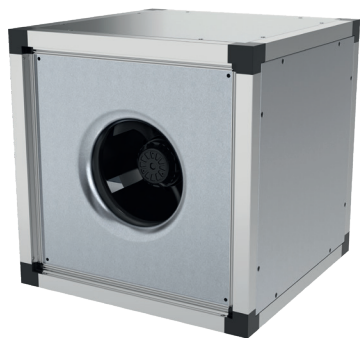


MUB EC

AMCA





Casing

Self-supporting aluminium frame construction with high impact resistant PA6 corners. 30 mm mineral wool acoustic and thermal insulation.

Motor

Energy-saving, highly efficient EC external rotor motors. Impeller geometry Centrifugal impeller with backward curved blades.

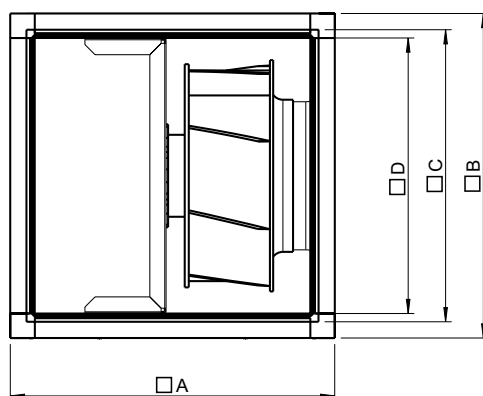
Output control

100 % controllable via a 0-10 V signal. The fans are equipped with a potentiometer (0-10 V), installed in the terminal box. The speed can be easily adjusted should the installation require a different operation point.

Motor protection

The motor protection is integrated in the motor electronics.

Dimension



Model	□ A	□ B	□ C	□ D
MUB 025 315EC	520	520	420	378
MUB 025 355EC	520	520	420	378
MUB 042 400EC	690	690	590	548
MUB 042 450EC	690	690	590	548
MUB 042 450EC-K	690	690	590	548
MUB 042 500 EC	690	690	590	548
MUB 062 560EC	820	820	720	678
MUB 062 630EC	820	820	720	678
MUB 100 630EC	1020	1020	920	878
MUB 100 710EC	1020	1020	920	878

Dimensions are in mm



Performance Data

Model	Article. no.	Voltage	Phase	Frequency	Rated power	Rated amps	Impeller speed	Sound power (*)
		V	~	HZ	W	A	r.p.m.	dB(A)
MUB 025 315EC	235423	220-240	1	50/60	169	1.34	1,784	74
MUB 025 355EC	235424	220-240	1	50/60	526	2.21	1,806	80
MUB 042 400EC	235425	220-240	1	50/60	537	2.29	1,476	78
MUB 042 450EC	235426	380-415	3	50/60	991	1.45	1,554	83
MUB 042 450EC-K	235435	220-240	1	50/60	768	3.22	1,415	81
MUB 042 500 EC	235427	380-415	3	50/60	1,315	1.96	1,340	84
MUB 062 560EC	230500	380-415	3	50/60	2,550	3.90	1,700	93
MUB 062 630EC	230504	380-415	3	50/60	3,150	4.90	1,675	94
MUB 100 630EC	230507	380-415	3	50/60	3,000	4.60	1,340	90
MUB 100 710EC	235399	380-415	3	50/60	6,434	8.96	1,205	93

(*) Sound power values ratings shown at freeblowing at 0 Pa max rpm.

Performance certified is for installation type A: free inlet; free outlet.

Speed (RPM) shown is nominal. Performance is based on actual speed of test.

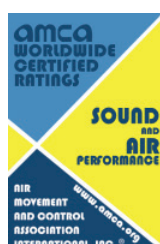
Performance ratings do not include the effects of appurtenances (accessories).

The sound ratings shown are in decibels, referred to 10⁻¹² Watts calculated AMCA standard 301. Values shown are for inlet LwIA for Installation type A.

Ratings do not include the effect of duct end correction.

Model	Article. no.	Air flow [m ³ /h]							
		0 Pas (*)	100 Pas (*)	200 Pas (*)	300 Pas (*)	400 Pas (*)	500 Pas (*)	600 Pas (*)	Max Pas (*)
MUB 025 315EC	235423	2580/2339	2108/1863	1508/1359	1000/933	561/533	61/-	-	500/500
MUB 025 355EC	235424	3992/3436	3711/3069	3384/2738	2945/2334	2437/1872	1784/1298	-	603/606
MUB 042 400EC	235425	4645/4326	4322/3982	3925/3564	3358/3039	2434/2301	-	-	534/527
MUB 042 450EC	235426	7108/6568	6940/6398	6445/5858	5866/5218	5173/4458	4289/3481	2899/1899	641/641
MUB 042 450EC-K	235435	6753/6110	6388/5819	5775/5228	5048/4454	4135/3423	2852/1944	-	542/546
MUB 042 500 EC	235427	8489/6995	7604/6633	6925/6050	6201/5434	5433/4780	4589/4099	3608/3304	800/787
MUB 062 560EC	230500	10662/9689	10292/9373	9900/9034	9483/8670	9034/8275	8548/7841	8015/7358	1164/1203
MUB 062 630EC	230504	14246/13002	13756/12490	13231/11947	12666/11368	12052/10746	11375/10071	10619/9329	1128/1113
MUB 100 630EC	230507	18351/17697	17391/16654	16388/15570	15334/14438	14217/13248	13022/11986	11725/10634	1032/1082
MUB 100 710EC	235399	26742/25008	25732/24063	24644/23124	23543/22011	22415/20841	21183/19495	19947/18097	1063/1110

(*) Second value shows straight air flow

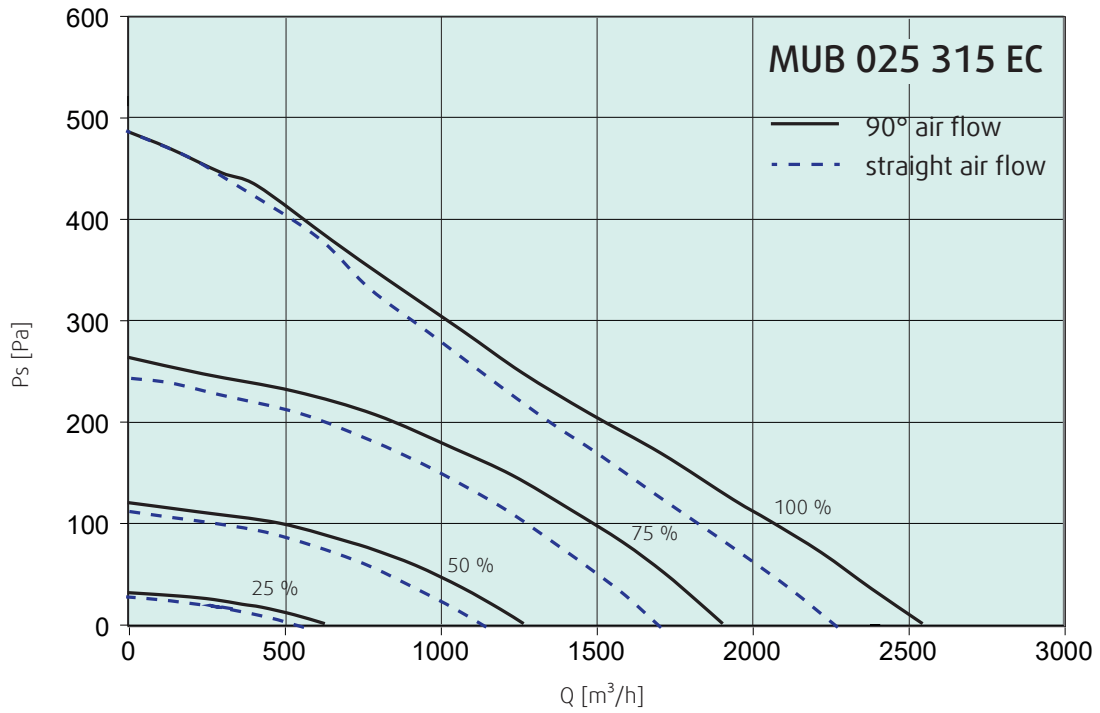


Systemair GmbH certifies that the MUB-EC series shown herein is licensed to bear the AMCA seal. The ratings shown are based on tests and procedures performed in accordance with AMCA Publication 211 and AMCA Publication 311 and comply with the requirements of the AMCA Certified Ratings Program.

MUB 025 315 EC

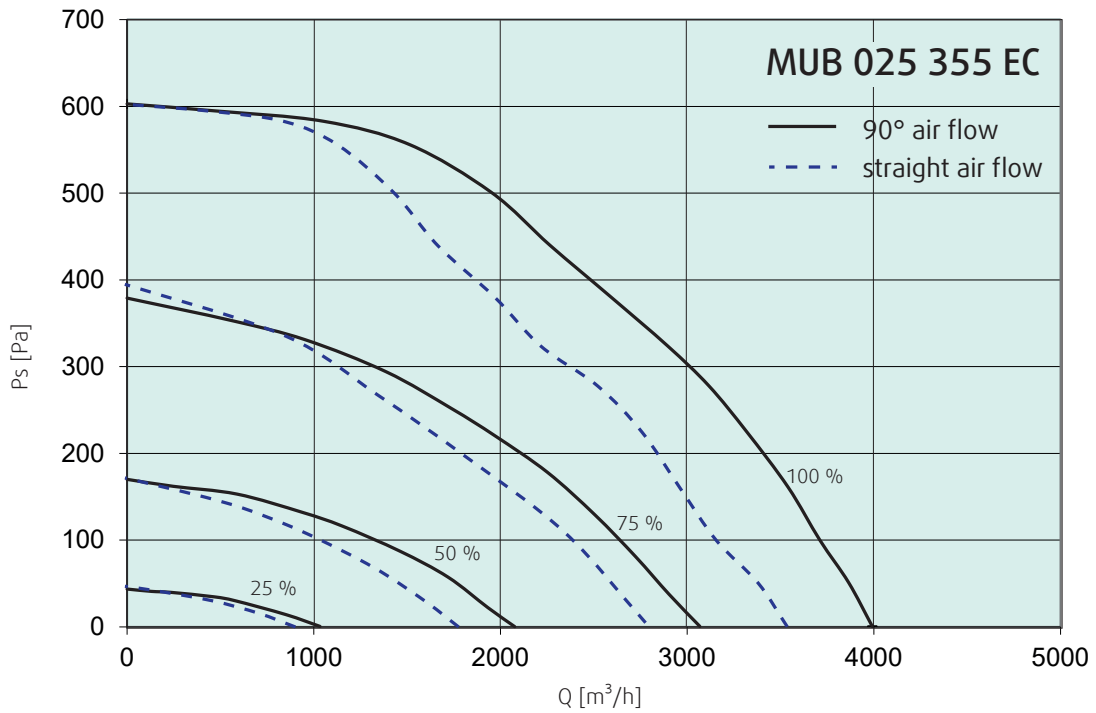


Performance Data



MUB 025 355 EC

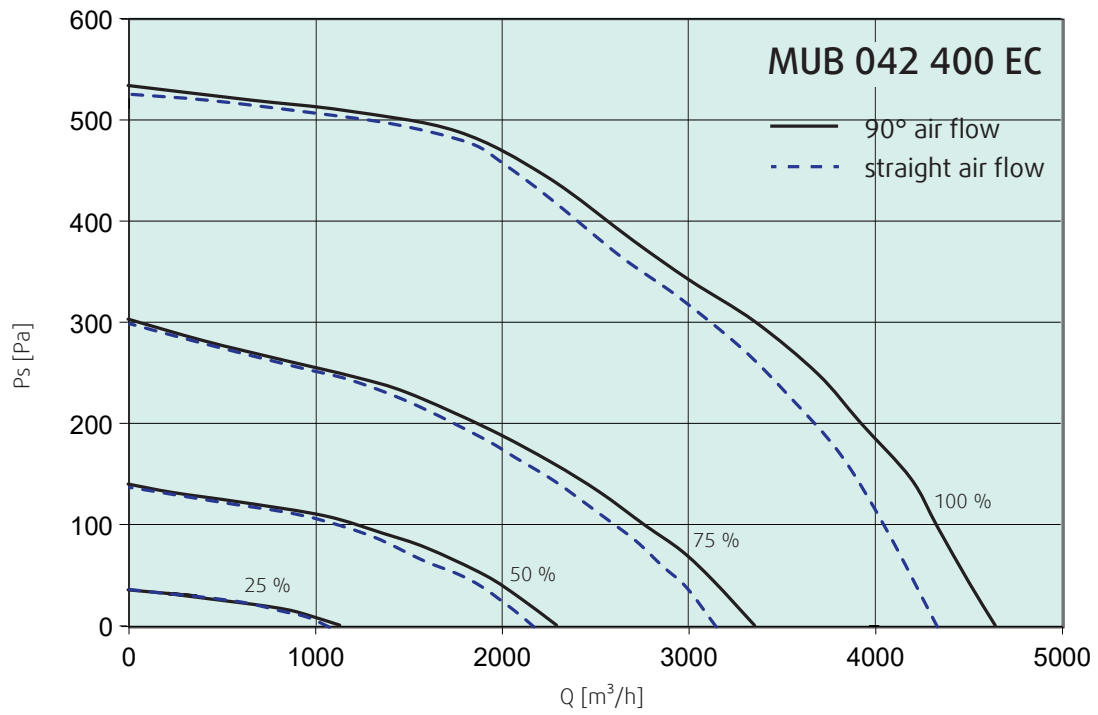
Performance Data



MUB 042 400 EC

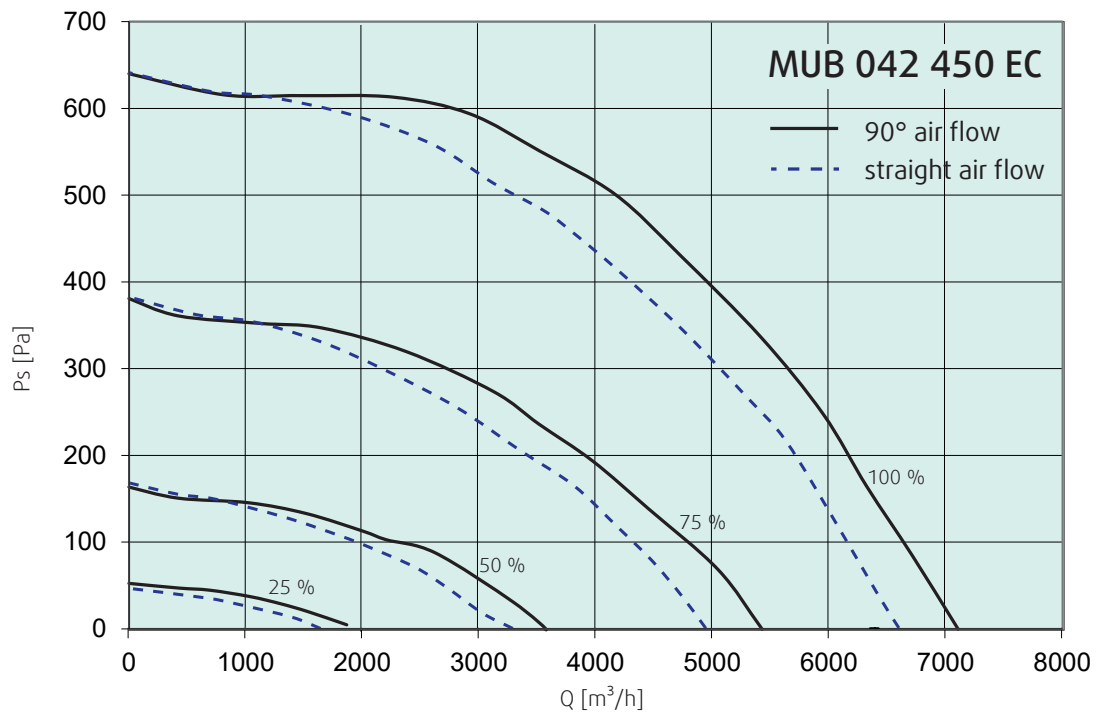


Performance Data



MUB 042 450 EC

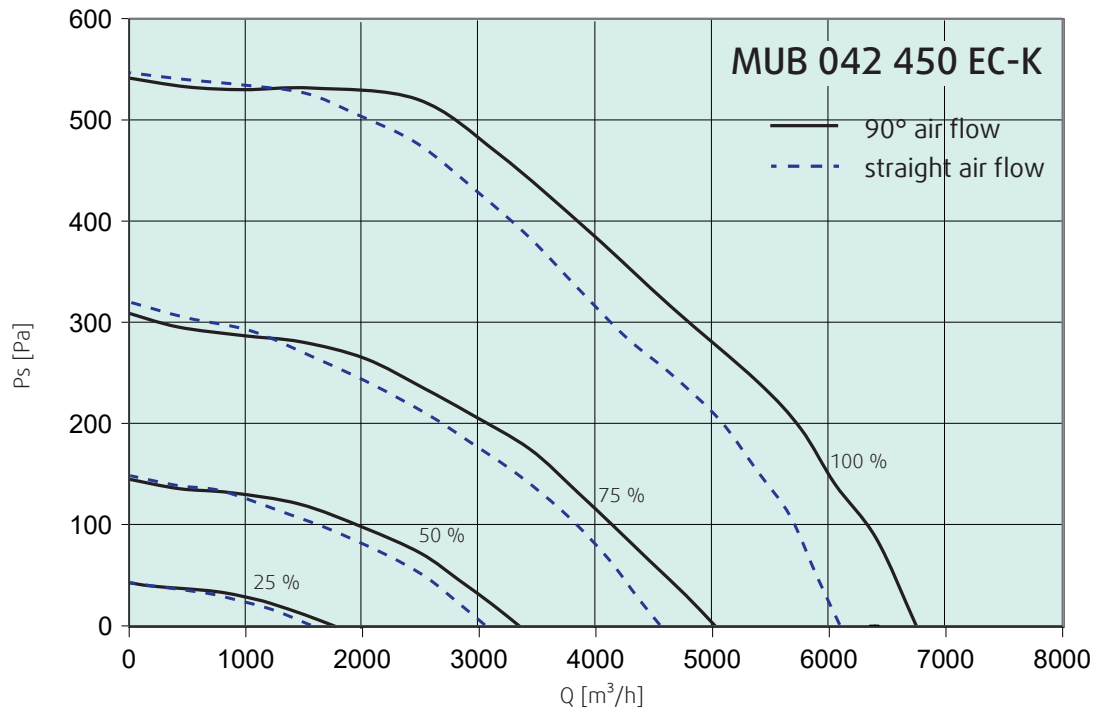
Performance Data



MUB 042 450 EC-K

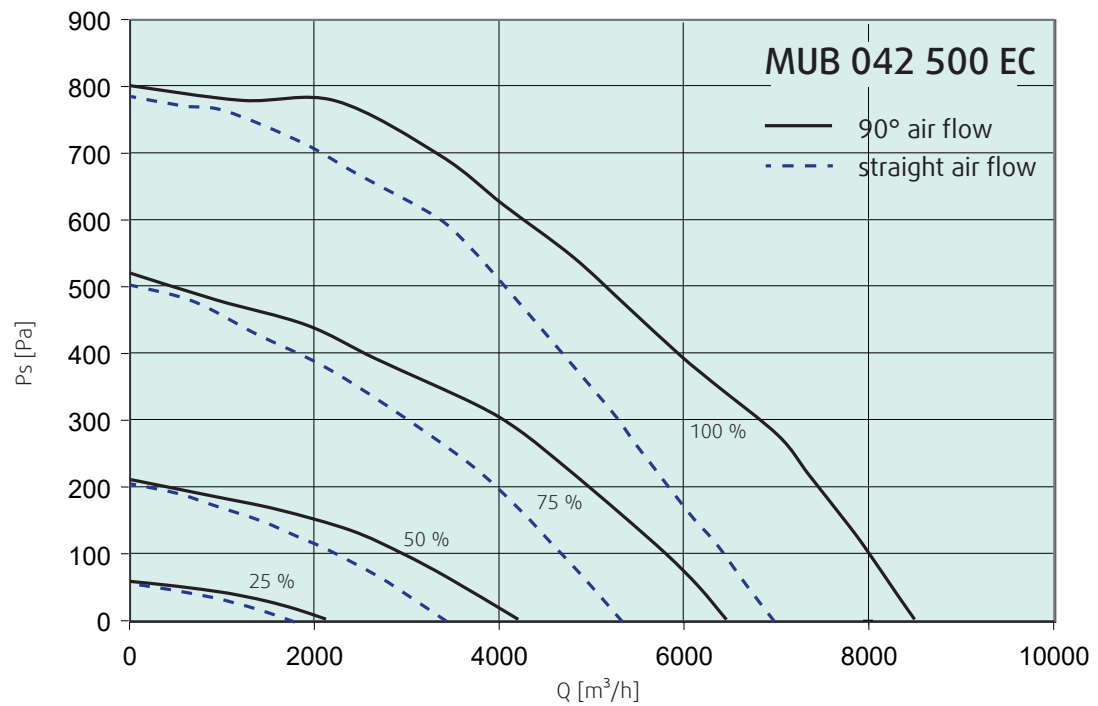


Performance Data



MUB 042 500 EC

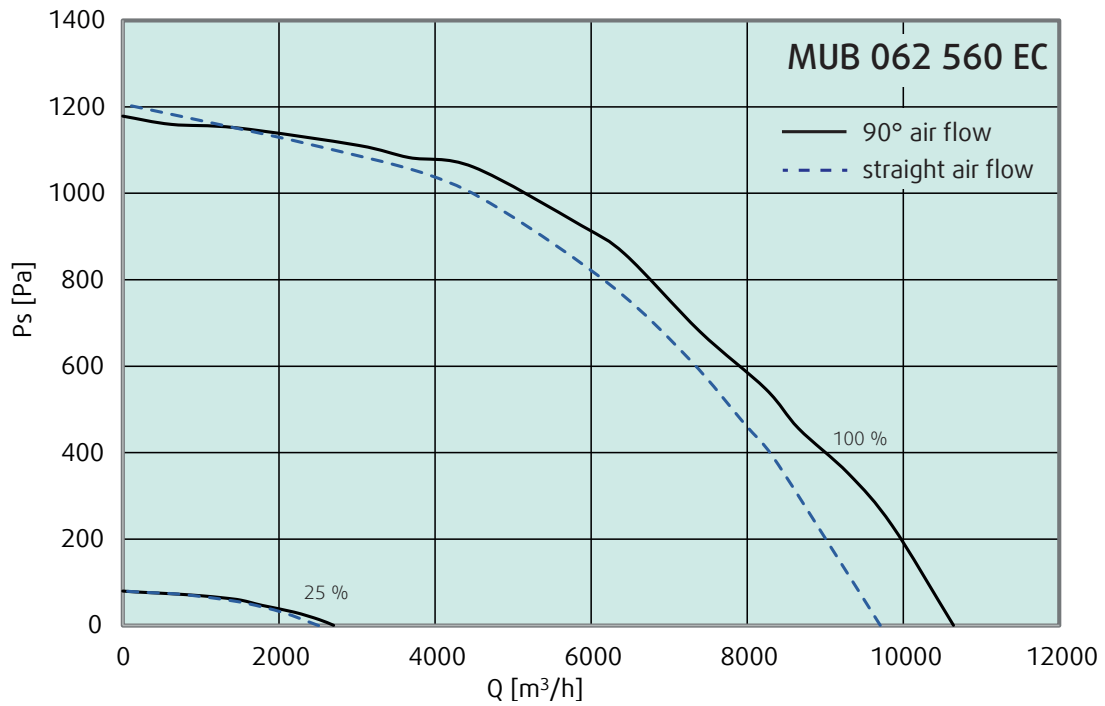
Performance Data



MUB 062 560 EC

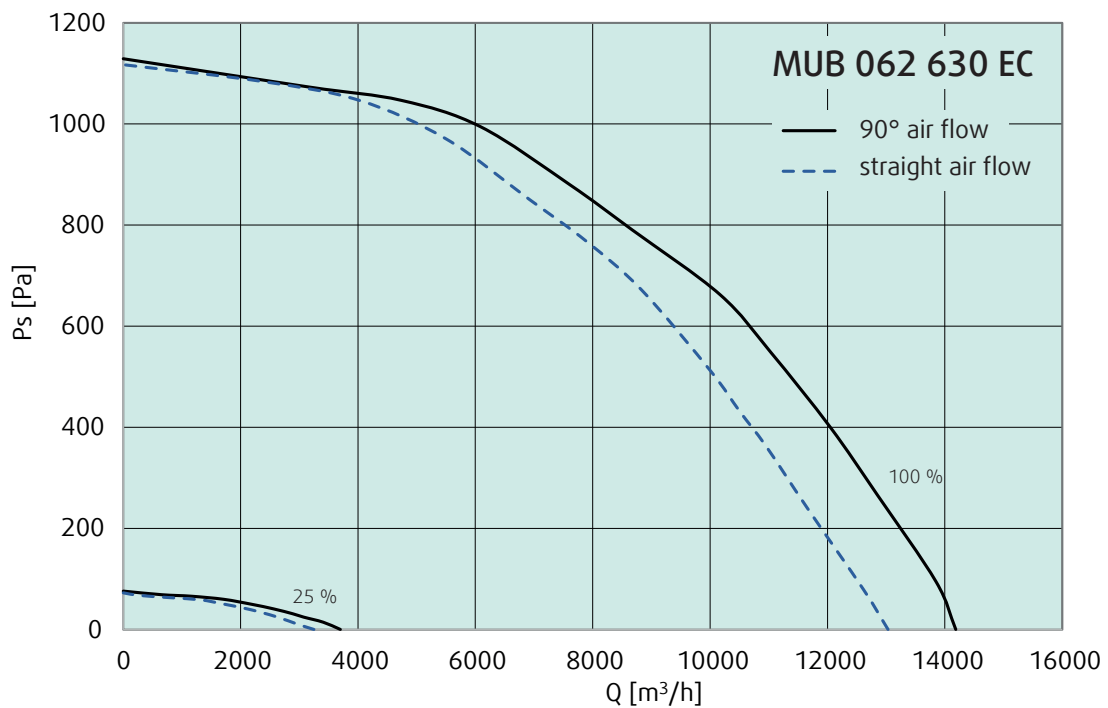


Performance Data



MUB 062 630 EC

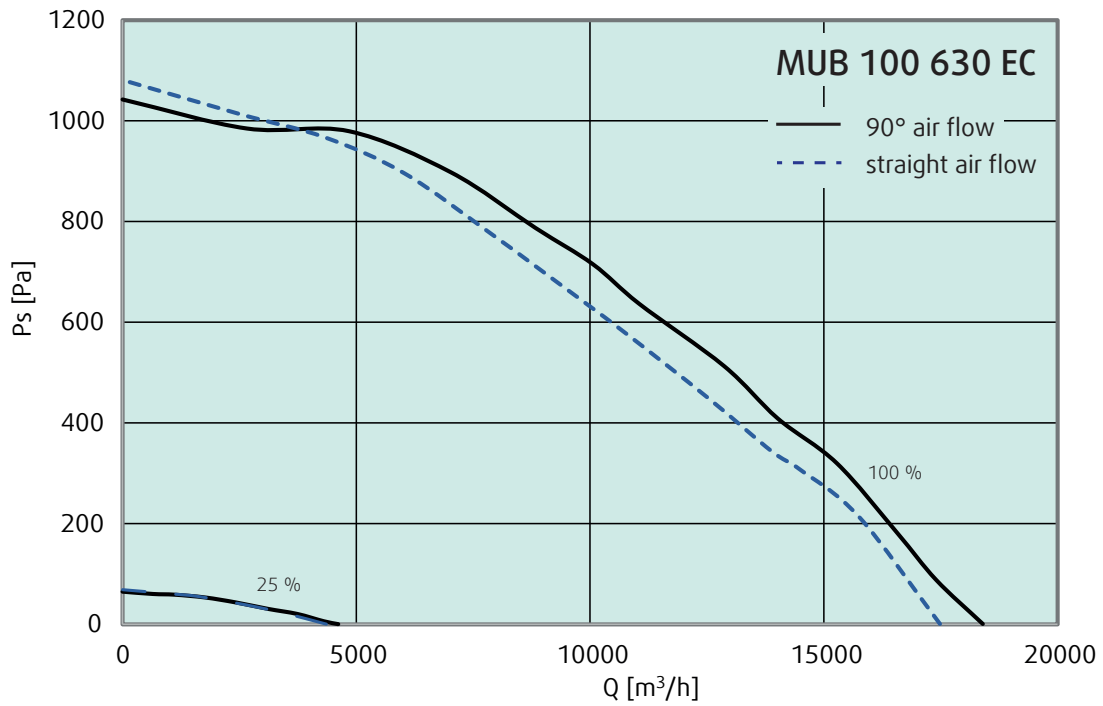
Performance Data



MUB 100 630 EC



Performance Data



MUB 100 710 EC

Performance Data

