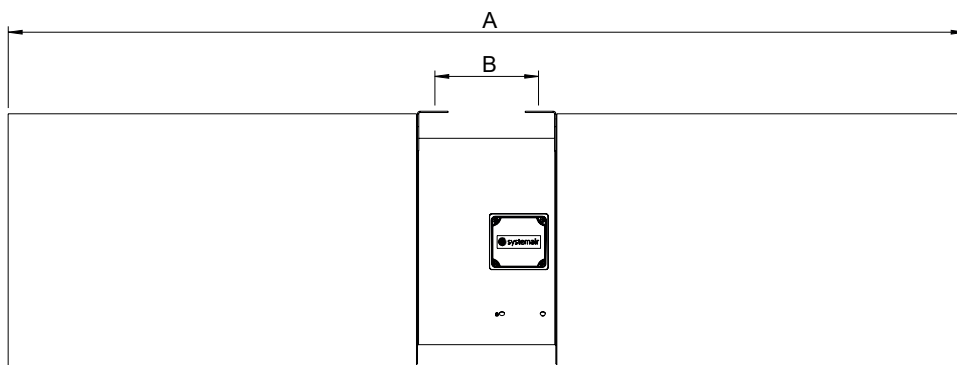
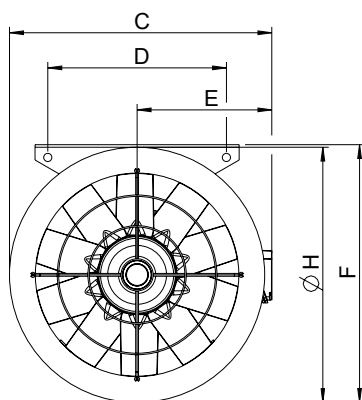


AJ Series

Axial Impulse Jet Fans



Dimensions in inches (millimeters)

	A	B	C	D	E	F	H
AJR 355	66.8 (1697)	8.3 (211)	18.5 (870)	12 (305)	9.4 (239)	18.3 (465)	18.1 (460)
AJR 400	73.6 (1869)	8.3 (211)	20.2 (513)	13.8 (351)	10.3 (351)	19.9 (506)	19.8 (503)

Specification Data

Item #	Model	Voltage, V 3ph	Amperage, A	Frequency, Hz	Input Power, kW	¹ Flow Rate				² Octave Bands Sound Power Levels, Lw [dB]								³ Total Sound dB(A), LpA @ 10ft
						RPM	Airflow, CFM	Thrust, N	Thrust/Fan input Power, N/kW	63	125	250	500	1000	2000	4000	8000	
95917	AJR 355 TR	230V	5.4	60	1.51	3500	4587	34.8	23.1	86	89	107	85	80	84	81	76	81
95930		460V	2.7	60														
95919	AJR 400 TR	230V	7.7	60	1.79	3500	6085	51.5	28.8	85	87	104	83	81	85	81	77	79
95931		460V	3.9	60														
484240	AJR 355 Q	230V	5.4	60	1.79	3500	4094	44.3	24.8	61	74	84	87	80	85	80	74	74
484241		460V	2.7	60														
484242	AJR 400 Q	230V	7.7	60	2.65	3500	5955	74	27.9	61	74	86	88	80	88	83	76	75
484243		460V	3.9	60														

¹The AMCA Certified Ratings Seal applies to airflow rate at free delivery only. Speed (RPM) shown is nominal. Performance is based on actual speed of test. Performance ratings include the effects of inlet and outlet guards.

²Values shown are for total sound power levels (Lw) for Installation Type A: free inlet, free outlet. The Sound power level ratings shown are in decibels, referred to 10-12 watts, calculated per AMCA Standard 301.

³The sound pressure values (LpA) shown are based on a hemispherical free field at 3.0 m (10 ft). dB(A) levels are not licensed by AMCA international.

Catalog series: AJ Series

Revision date: October 2021

Certifications:

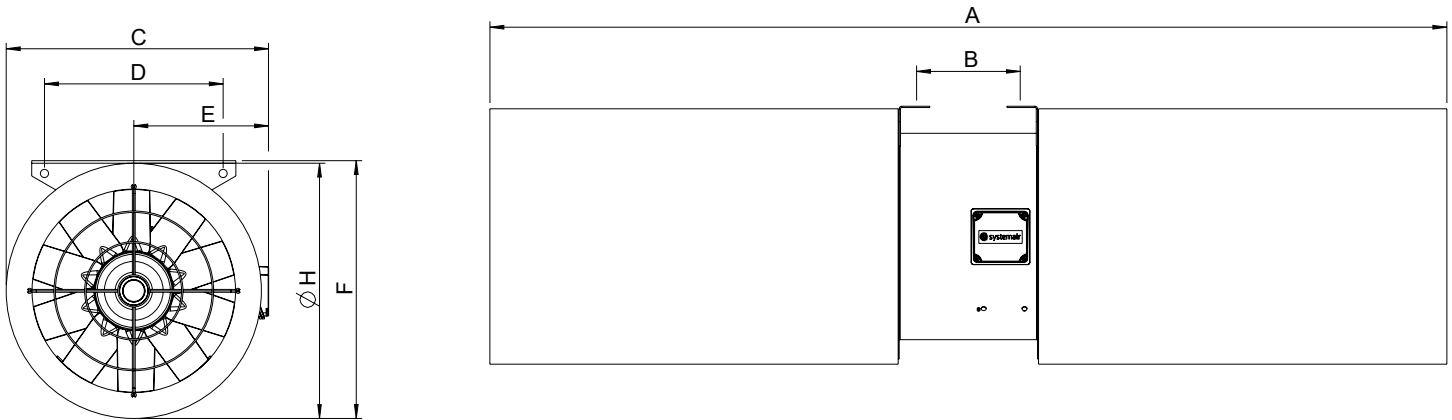


Systemair Mfg. Inc. certifies that the AJ series shown herein is licensed to bear the AMCA seal. The ratings shown are based on tests and procedures performed in accordance with AMCA Publication 211 and AMCA Publication 311 and comply with the requirements of the AMCA Certified Ratings Program.



AJ Series

Axial Impulse Jet Fans



Dimensions in inches (millimeters)

	A	B	C	D	E	F	H
AJR 315	60.4 (1535)	8.3 (211)	17.0 (433)	10.4 (265)	8.8 (223)	16.7 (425)	16.5 (420)
AJR 355	66.8 (1697)	8.3 (211)	18.5 (470)	12 (305)	9.4 (239)	18.3 (465)	18.1 (460)
AJR 400	73.6 (1869)	8.3 (211)	20.2 (513)	13.8 (351)	10.3 (351)	19.9 (506)	19.8 (503)

Specification Data

Item #	Model	Voltage, V 3ph	Amperage, A	Frequency, Hz	Input Power, kW	¹ Flow Rate				² Octave Bands Sound Power Levels, Lw [dB]								³ Total Sound dB(A), LpA @ 10ft
						RPM	Airflow, CFM	Thrust, N	Thrust/Fan input Power, N/kW	63	125	250	500	1000	2000	4000	8000	
94784	AJR 315 B TR	400V	1.4	50	0.77	2900	2436	20.1	26.2	40	51	66	58	59	57	54	47	68
228594	AJR 315 B TR	460V	1.5	60	0.98	3340	2567	22.3	22.7	86	84	97	80	81	78	75	70	72
231073	AJR 355 B TR	400V	2.4	50	1.38	2900	3714	36.4	26.4	53	51	73	28	59	61	57	59	73
94787	AJR 400 B TR	400V	3.8	50	2.12	2900	5331	59.3	28.0	45	53	74	60	60	66	59	52	75

¹The AMCA Certified Ratings Seal applies to airflow rate at free delivery only. Speed (RPM) shown is nominal. Performance is based on actual speed of test. Performance ratings include the effects of inlet and outlet guards.

²Values shown are for total sound power levels (Lw) for Installation Type A: free inlet, free outlet. The Sound power level ratings shown are in decibels, referred to 10-12 watts, calculated per AMCA Standard 301.

³The sound pressure values (LpA) shown are based on a hemispherical free field at 3.0 m (10 ft). dB(A) levels are not licensed by AMCA international.

Catalog series: AJ Series

Revision date: October 2021

Certifications:

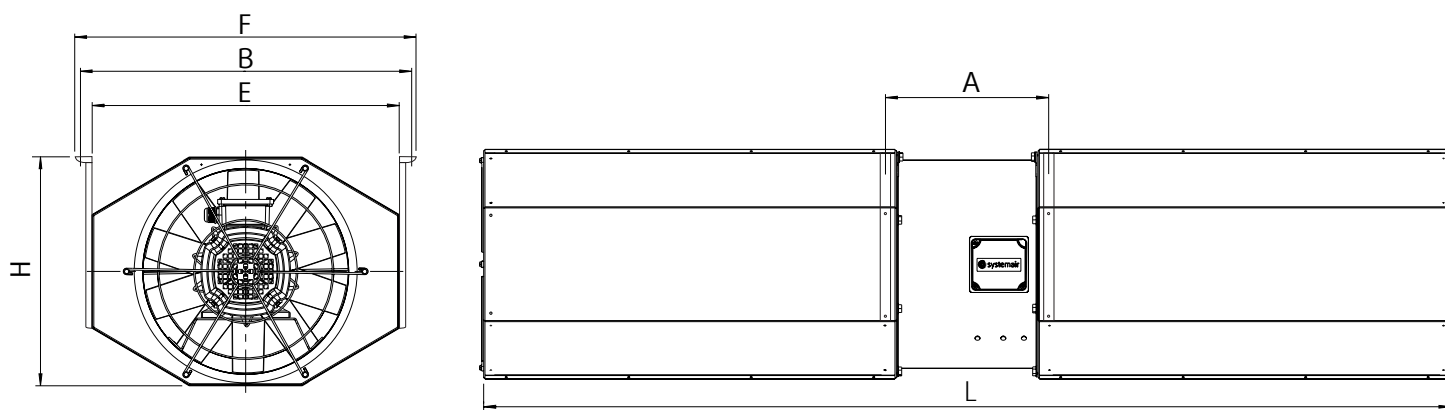


Systemair Mfg. Inc. certifies that the AJ series shown herein is licensed to bear the AMCA seal. The ratings shown are based on tests and procedures performed in accordance with AMCA Publication 211 and AMCA Publication 311 and comply with the requirements of the AMCA Certified Ratings Program.



AJ Series

Axial Impulse Jet Fans



Dimensions in inches (millimeters)

	H	B	E	F	A	L
AJ8 315	14.4 (365)	21.7 (550)	25.0 (635)	26.7 (678)	13.7 (349)	60.4 (1535)
AJ8 355	14.4 (365)	21.7 (550)	25.0 (635)	26.7 (678)	13.7 (349)	66.7 (1695)
AJ8 400	17.5 (445)	23.6 (600)	26.9 (684)	28.6 (727)	13.7 (349)	73.8 (1875)

Specification Data

Item #	Model	Voltage, V 3ph	Amperage, A	Frequency, Hz	Input Power, kW	Flow Rate				Octave Bands Sound Power Levels, Lw [dB]								Total Sound dB(A), LpA @ 10ft
						RPM	Airflow, CFM	Thrust, N	Thrust/Fan input Power, N/kW	63	125	250	500	1000	2000	4000	8000	
229910	AJ8 315 B TR	400V	1.4	50	0.77	2900	2436	20.1	26.2	84	85	92	79	77	74	71	65	68
231075	AJ8 355 B TR	400V	2.4	50	1.38	2900	3714	36.4	26.4	97	84	99	79	77	78	73	68	73
94795	AJ8 400 B TR	400V	3.8	50	2.20	2900	5332	59.3	26.9	40	55	71	64	60	61	60	52	73

¹The AMCA Certified Ratings Seal applies to airflow rate at free delivery only. Speed (RPM) shown is nominal. Performance is based on actual speed of test. Performance ratings include the effects of inlet and outlet guards.

²Values shown are for total sound power levels (Lw) for Installation Type A: free inlet, free outlet. The Sound power level ratings shown are in decibels, referred to 10-12 watts, calculated per AMCA Standard 301.

³The sound pressure values (LpA) shown are based on a hemispherical free field at 3.0 m (10 ft). dB(A) levels are not licensed by AMCA international.

Catalog series: AJ Series

Revision date: October 2021

Certifications:



Systemair Mfg. Inc. certifies that the AJ series shown herein is licensed to bear the AMCA seal. The ratings shown are based on tests and procedures performed in accordance with AMCA Publication 211 and AMCA Publication 311 and comply with the requirements of the AMCA Certified Ratings Program.

