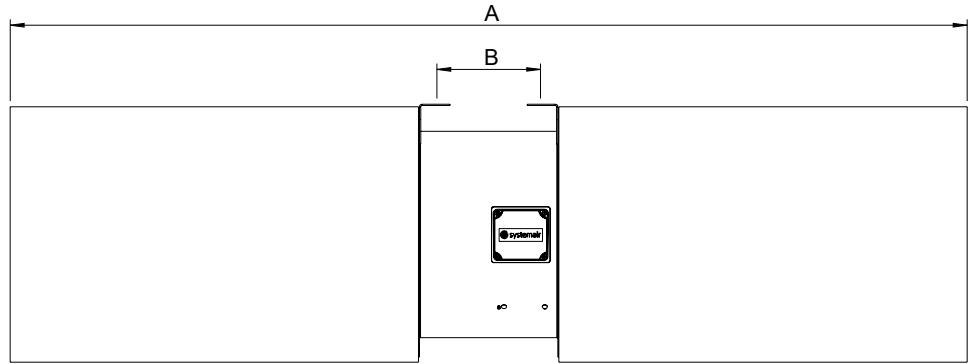
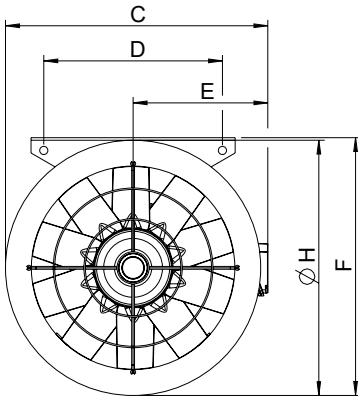


AJ Series

Axial Impulse Jet Fans



Dimensions in inches (millimeters)

| | A | B | C | D | E | F | H |
|---------|-------------|-----------|------------|------------|------------|------------|------------|
| AJR 355 | 66.8 (1697) | 8.3 (211) | 18.5 (870) | 12 (305) | 9.4 (239) | 18.3 (465) | 18.1 (460) |
| AJR 400 | 73.6 (1869) | 8.3 (211) | 20.2 (513) | 13.8 (351) | 10.3 (351) | 19.9 (506) | 19.8 (503) |

Specification Data

| Item # | Model | Voltage, V 3ph | Amperage, A | Frequency, Hz | Input Power, kW | ¹ Flow Rate | | | | ² Octave Bands Sound Power Levels, Lw [dB] | | | | | | | | ³ Total Sound dB(A), LpA @ 10ft |
|--------|------------|----------------|-------------|---------------|-----------------|------------------------|--------------|-----------|------------------------------|---|-----|-----|-----|------|------|------|------|--|
| | | | | | | RPM | Airflow, CFM | Thrust, N | Thrust/Fan input Power, N/kW | 63 | 125 | 250 | 500 | 1000 | 2000 | 4000 | 8000 | |
| 95917 | AJR 355 TR | 230V | 5.4 | 60 | 1.51 | 3500 | 3630 | 34.8 | 23.1 | 86 | 89 | 107 | 85 | 80 | 84 | 81 | 76 | 81 |
| 95930 | | 460V | 2.7 | 60 | | | | | | | | | | | | | | |
| 95919 | AJR 400 TR | 230V | 7.7 | 60 | 1.79 | 3500 | 4968 | 51.5 | 28.8 | 85 | 87 | 104 | 83 | 81 | 85 | 81 | 77 | 79 |
| 95931 | | 460V | 3.9 | 60 | | | | | | | | | | | | | | |
| 484240 | AJR 355 Q | 230V | 5.4 | 60 | 1.79 | 3500 | 4094 | 44.3 | 24.8 | 87 | 90 | 93 | 90 | 80 | 84 | 79 | 75 | 74 |
| 484241 | | 460V | 2.7 | 60 | | | | | | | | | | | | | | |
| 484242 | AJR 400 Q | 230V | 7.7 | 60 | 2.65 | 3500 | 5955 | 74 | 27.9 | 87 | 90 | 95 | 91 | 80 | 87 | 82 | 77 | 75 |
| 484243 | | 460V | 3.9 | 60 | | | | | | | | | | | | | | |

¹The AMCA Certified Ratings Seal applies to airflow rate at free delivery only. Speed (RPM) shown is nominal. Performance is based on actual speed of test. Performance ratings include the effects of inlet and outlet guards.

²Values shown are for total sound power levels (Lw) for Installation Type A: free inlet, free outlet. The Sound power level ratings shown are in decibels, referred to 10-12 watts, calculated per AMCA Standard 301.

³The sound pressure values (LpA) shown are based on a hemispherical free field at 3.0 m (10 ft). dB(A) levels are not licensed by AMCA international.

Catalog series: AJ Series

Revision date: July 2021

Certifications:

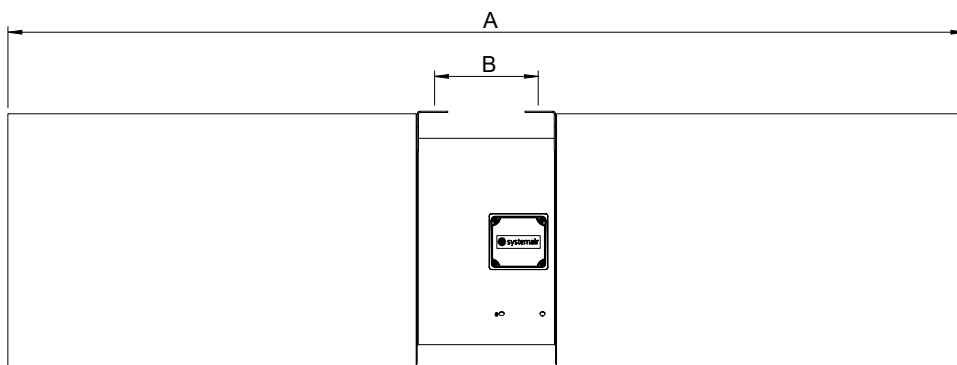
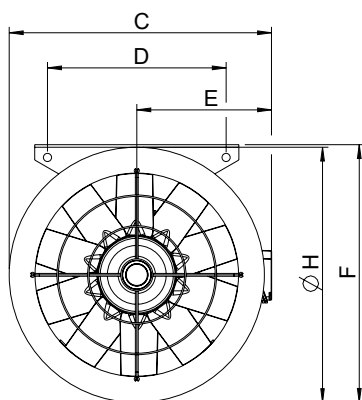


Systemair Mfg. Inc. certifies that the AJ series shown herein is licensed to bear the AMCA seal. The ratings shown are based on tests and procedures performed in accordance with AMCA Publication 211 and AMCA Publication 311 and comply with the requirements of the AMCA Certified Ratings Program.



AJ Series

Axial Impulse Jet Fans



Dimensions in inches (millimeters)

| | A | B | C | D | E | F | H |
|---------|-------------|-----------|------------|------------|------------|------------|------------|
| AJR 315 | 60.4 (1535) | 8.3 (211) | 17.0 (433) | 10.4 (265) | 8.8 (223) | 16.7 (425) | 16.5 (420) |
| AJR 355 | 66.8 (1697) | 8.3 (211) | 18.5 (470) | 12 (305) | 9.4 (239) | 18.3 (465) | 18.1 (460) |
| AJR 400 | 73.6 (1869) | 8.3 (211) | 20.2 (513) | 13.8 (351) | 10.3 (351) | 19.9 (506) | 19.8 (503) |

Specification Data

| Item # | Model | Voltage, V 3ph | Amperage, A | Frequency, Hz | Input Power, kW | ¹ Flow Rate | | | | ² Octave Bands Sound Power Levels, Lw [dB] | | | | | | | | ³ Total Sound dB(A), LpA @ 10ft |
|--------|--------------|----------------|-------------|---------------|-----------------|------------------------|--------------|-----------|------------------------------|---|-----|-----|-----|------|------|------|------|--|
| | | | | | | RPM | Airflow, CFM | Thrust, N | Thrust/Fan input Power, N/kW | 63 | 125 | 250 | 500 | 1000 | 2000 | 4000 | 8000 | |
| 94784 | AJR 315 B TR | 400V | 1.4 | 50 | 0.77 | 2900 | 2436 | 20.1 | 26.2 | 84 | 85 | 92 | 79 | 77 | 74 | 71 | 65 | 68 |
| 231073 | AJR 355 B TR | 400V | 2.4 | 50 | 1.38 | 2900 | 3714 | 36.4 | 26.4 | 97 | 84 | 99 | 79 | 77 | 78 | 73 | 68 | 73 |
| 94787 | AJR 400 B TR | 400V | 3.8 | 50 | 2.12 | 2900 | 5331 | 59.3 | 28.0 | 89 | 87 | 100 | 81 | 77 | 82 | 76 | 71 | 75 |

¹The AMCA Certified Ratings Seal applies to airflow rate at free delivery only. Speed (RPM) shown is nominal. Performance is based on actual speed of test. Performance ratings include the effects of inlet and outlet guards.

²Values shown are for total sound power levels (Lw) for Installation Type A: free inlet, free outlet. The Sound power level ratings shown are in decibels, referred to 10-12 watts, calculated per AMCA Standard 301.

³The sound pressure values (LpA) shown are based on a hemispherical free field at 3.0 m (10 ft). dB(A) levels are not licensed by AMCA international.

Catalog series: AJ Series

Revision date: July 2021

Certifications:

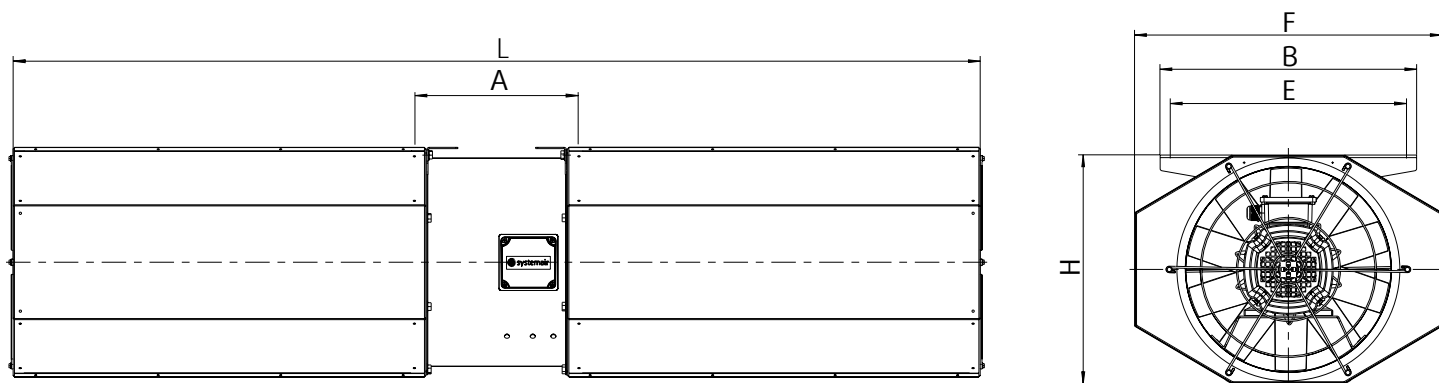


Systemair Mfg. Inc. certifies that the AJ series shown herein is licensed to bear the AMCA seal. The ratings shown are based on tests and procedures performed in accordance with AMCA Publication 211 and AMCA Publication 311 and comply with the requirements of the AMCA Certified Ratings Program.



AJ Series

Axial Impulse Jet Fans



Dimensions in inches (millimeters)

| | H | B | E | F | A | L |
|---------|------------|------------|------------|------------|------------|-------------|
| AJ8 400 | 17.5 (445) | 23.6 (600) | 26.9 (684) | 28.6 (727) | 13.7 (349) | 73.8 (1875) |

Specification Data

| Item # | Model | Voltage, V 3ph | Amperage, A | Frequency, Hz | Input Power, kW | ¹ Flow Rate | | | | ² Octave Bands Sound Power Levels, Lw [dB] | | | | | | | | ³ Total Sound dB(A), LpA @ 10ft |
|--------|--------------|----------------|-------------|---------------|-----------------|------------------------|--------------|-----------|------------------------------|---|-----|-----|-----|------|------|------|------|--|
| | | | | | | RPM | Airflow, CFM | Thrust, N | Thrust/Fan input Power, N/kW | 63 | 125 | 250 | 500 | 1000 | 2000 | 4000 | 8000 | |
| 94795 | AJ8 400 B TR | 400V | 3.8 | 50 | 2.20 | 2900 | 5332 | 59.3 | 26.9 | 84 | 88 | 97 | 84 | 78 | 78 | 76 | 71 | 73 |

¹The AMCA Certified Ratings Seal applies to airflow rate at free delivery only. Speed (RPM) shown is nominal. Performance is based on actual speed of test. Performance ratings include the effects of inlet and outlet guards.

²Values shown are for total sound power levels (Lw) for Installation Type A: free inlet, free outlet. The Sound power level ratings shown are in decibels, referred to 10-12 watts, calculated per AMCA Standard 301.

³The sound pressure values (LpA) shown are based on a hemispherical free field at 3.0 m (10 ft). dB(A) levels are not licensed by AMCA international.

Catalog series: AJ Series

Revision date: July 2021

Certifications:



Systemair Mfg. Inc. certifies that the AJ series shown herein is licensed to bear the AMCA seal. The ratings shown are based on tests and procedures performed in accordance with AMCA Publication 211 and AMCA Publication 311 and comply with the requirements of the AMCA Certified Ratings Program.

