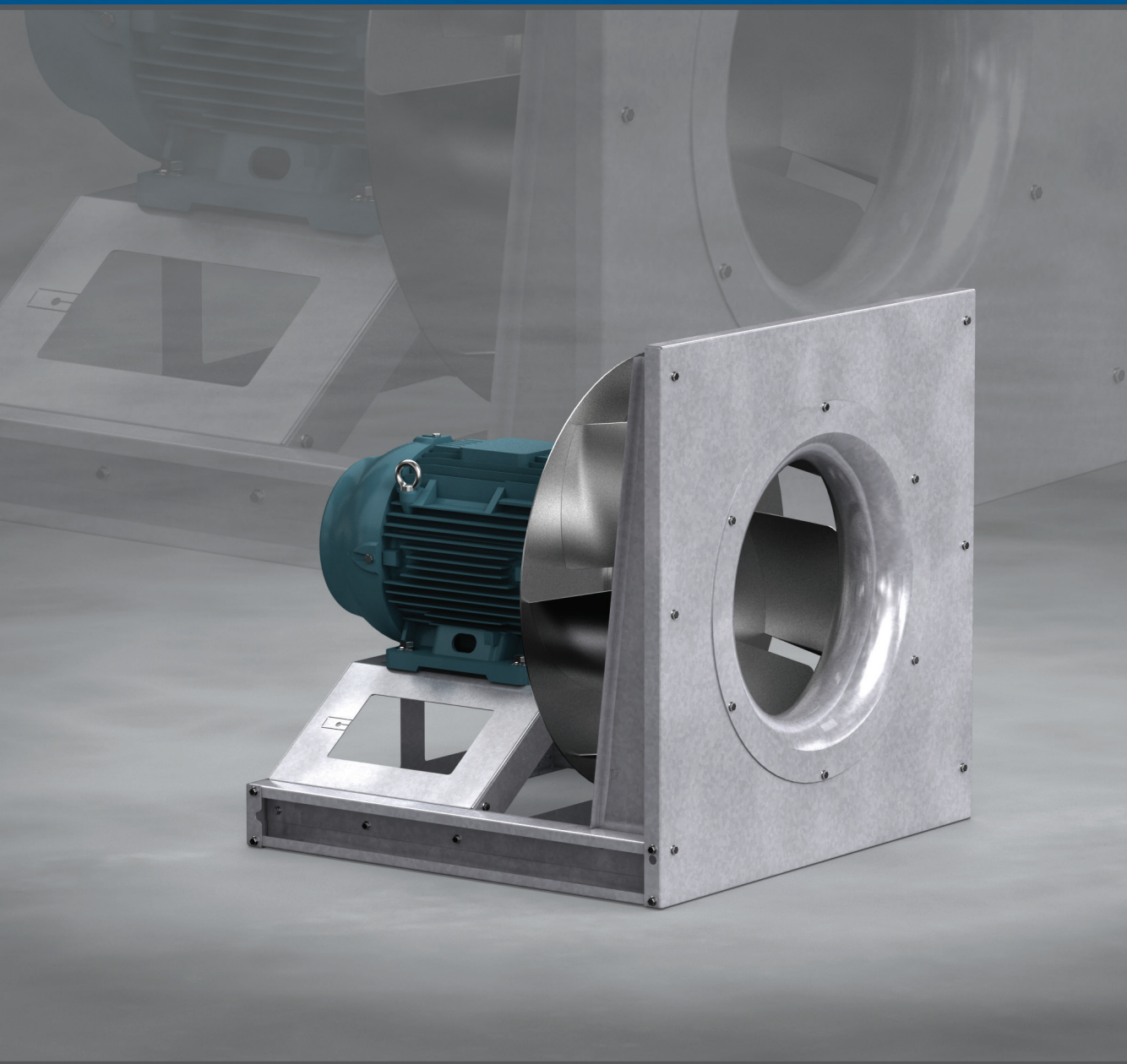


# Plenum Fans Model APM-M

Direct Drive Performance Supplement

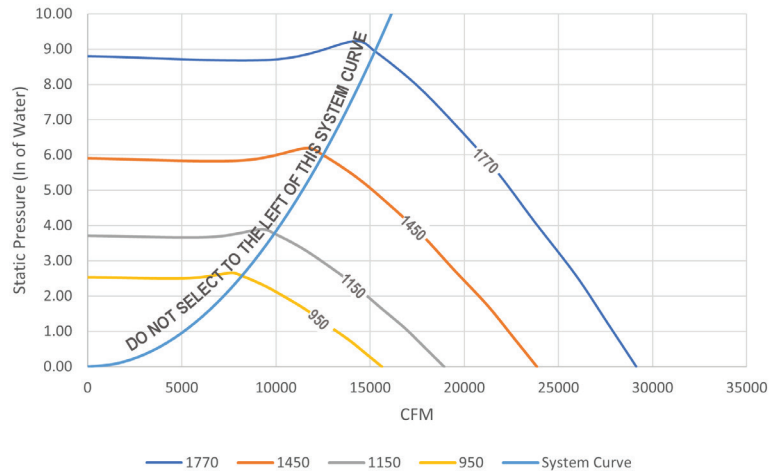
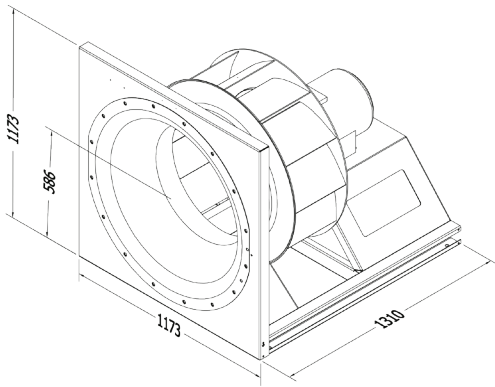


BUILDING VALUE IN AIR.



March  
2024

## APM-M 800



Unit Weight = 325 Kg  
Dimensions are in millimeters  
Weight shown is the largest catalog motor

Max kW = 22 kW  
Maximum Speed (rpm) = 1702  
Maximum Frame Size = 180L FR

Wheel Diameter (mm) = 762  
Outlet Area (ft<sup>2</sup>) = 13.7  
Outlet Velocity = Volume (ft<sup>3</sup>)/13.7

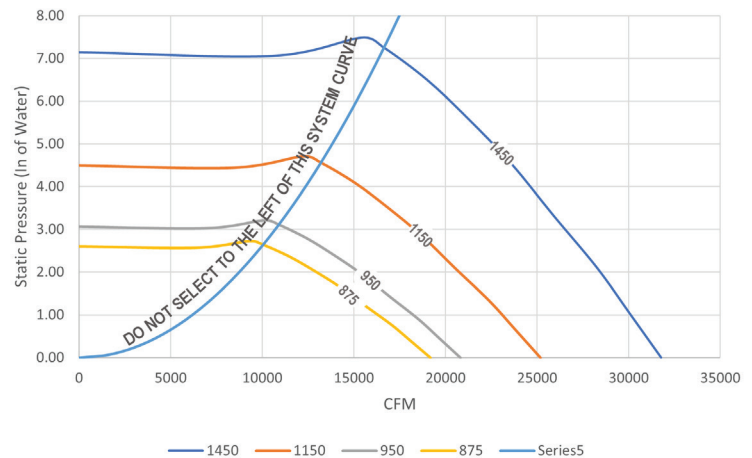
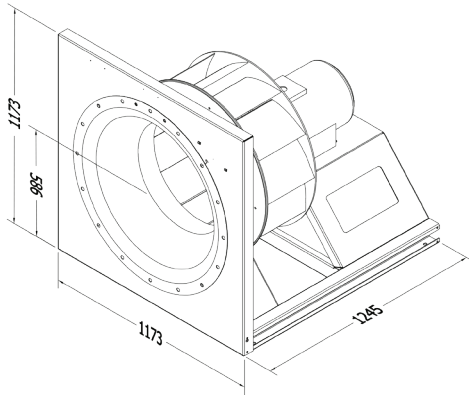
Model Number	Fan RPM	CFM/Static Pressure in Inches wg											
			0	1	2	3	4	5	6	7			
APM-M-800	1770	CFM	29128	27893	26652	25324	23877	22462	20943	19258	17419	14987	
		kW	11.58	13.57	15.37	17	18.49	19.84	21.07	22.07	22.37	21.84	
		dBA/LwA	90/102	89/101	88/100	87/99	86/98	85/97	84/96	83/95	82/94	81/93	
	1450	CFM	23862	22353	20769	19014	17211	15098	12463				
		kW	6.37	7.96	9.33	10.52	11.56	12.21	12.07				
		dBA/LwA	85/97	84/95	83/94	81/92	81/92	78/89	76/88				
	1150		0	0.5	1	1.5	2	2.5	3	3.5	4	4.5	5
		CFM	18295	17975	17018	15933	14835	13691	12385	10877			
		kW	3.18	3.82	4.39	4.89	5.35	5.76	6.06	6.1			
		dBA/LwA	79/91	79/91	78/90	77/89	76/88	75/87	74/85	72/84			
	950	CFM	15634	14481	13226	11899	10393	8502					
		kW	1.79	2.31	2.74	3.11	3.41	3.41					
		dBA/LwA	75/87	74/86	73/85	72/83	70/81	67/79					

Greenheck India Pvt. Ltd. certifies that the model shown herein is licensed to bear the AMCA Seal. The ratings shown are based on tests and procedures performed in accordance with AMCA Publication 211 and comply with the requirements of the AMCA Certified Ratings Program. The AMCA Certified Ratings Seal applies to air and sound performance ratings. Performance shown is for installation type B: Free inlet, Ducted outlet. Power rating (BHP/kW) does not include transmission losses. Performance ratings do not include the effects of appurtenances in the airstream (accessories). The sound power level ratings shown are in decibels, referred to 10<sup>-12</sup> watts calculated per AMCA Standard 301. The A-weighted sound ratings shown have been calculated per AMCA International Standard 301. Values shown are for inlet LwA, sound power levels for installation type B: free inlet, ducted outlet. Ratings do not include the effects of end correction. dBA levels are not licensed by AMCA International. The AMCA Certified Ratings Seal for Sound applies to inlet LwA ratings only.\* License to Bear The AMCA Seal For Sound and Air Performance.





## APM-M 850



Unit Weight = 345 Kg  
Dimensions are in millimeters  
Weight shown is the largest catalog motor

Max kW = 24 kW  
Maximum Speed (rpm) = 1547  
Maximum Frame Size = 200L FR

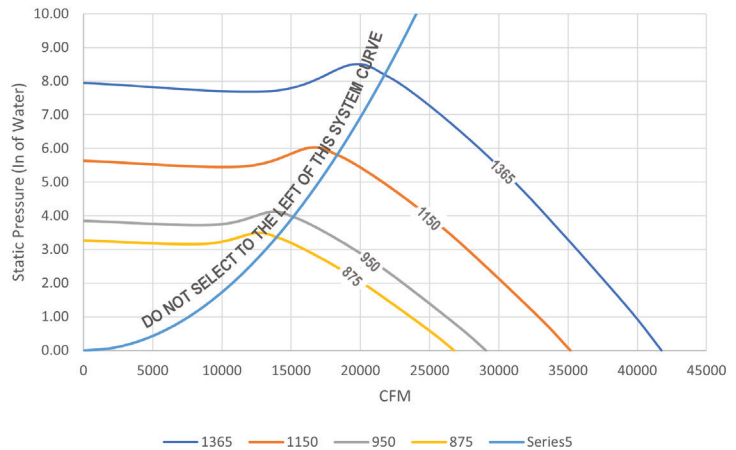
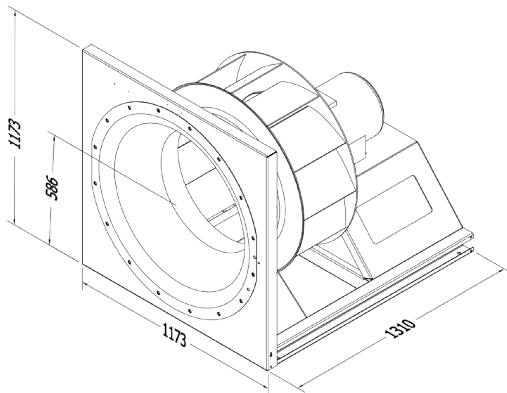
Wheel Diameter (mm) = 838  
Outlet Area (ft<sup>2</sup>) = 16.55  
Outlet Velocity = Volume (ft<sup>3</sup>/min) / 16.55

Model Number	Fan RPM	CFM/Static Pressure in Inches wg											
			0	1	2	3	4	5	6	7			
APM-M-850	1450	CFM	31761	30101	28432	26517	24606	22549	20219	17419			
		kW	10.25	12.43	14.32	15.97	17.48	18.81	19.65	19.57			
		dBA/LwA	88/100	87/99	86/97	85/96	83/95	82/94	81/92	80/91			
	1150		0	0.5	1	1.5	2	2.5	3	3.5	4	4.5	5
		CFM	25189	24143	23093	21979	20754	19554	18293	16883	15332	13434	
		kW	5.12	5.98	6.76	7.47	8.11	8.7	9.25	9.71	9.86	9.73	
		dBA/LwA	82/94	81/93	81/92	80/91	79/91	78/90	77/89	76/88	75/86	74/85	
	950	CFM	20809	19541	18226	16749	15273	13532	11435				
		kW	2.88	3.58	4.18	4.71	5.18	5.51	5.51				
		dBA/LwA	78/89	77/88	76/87	75/86	73/85	72/83	70/81				
	875	CFM	19166	17789	16299	14712	12943	10766					
		kW	2.25	2.89	3.42	3.88	4.26	4.31					
		dBA/LwA	76/87	75/86	73/85	72/84	70/82	68/80					

Greenheck India Pvt. Ltd. certifies that the model shown herein is licensed to bear the AMCA Seal. The ratings shown are based on tests and procedures performed in accordance with AMCA Publication 211 and comply with the requirements of the AMCA Certified Ratings Program. The AMCA Certified Ratings Seal applies to air and sound performance ratings. Performance shown is for installation type B: Free inlet, Ducted outlet. Power rating (BHP/kW) does not include transmission losses. Performance ratings do not include the effects of appurtenances in the airstream (accessories). The sound power level ratings shown are in decibels, referred to 10<sup>-12</sup> watts calculated per AMCA Standard 301. The A-weighted sound ratings shown have been calculated per AMCA International Standard 301. Values shown are for inlet LwA, sound power levels for installation type B: free inlet, ducted outlet. Ratings do not include the effects of end correction. dBA levels are not licensed by AMCA International. The AMCA Certified Ratings Seal for Sound applies to inlet LwA ratings only.\* License to Bear The AMCA Seal For Sound and Air Performance.



## APM-M 900



Unit Weight = 465 Kg  
Dimensions are in millimeters  
Weight shown is the largest catalog motor

Max kW = 30 kW  
Maximum Speed (rpm) = 1365  
Maximum Frame Size = 200L FR

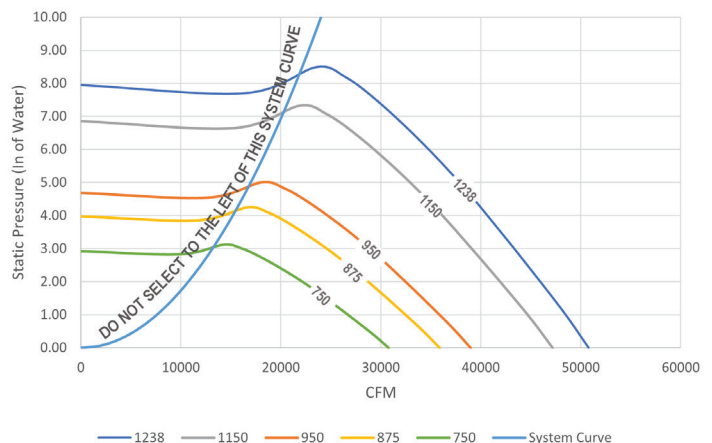
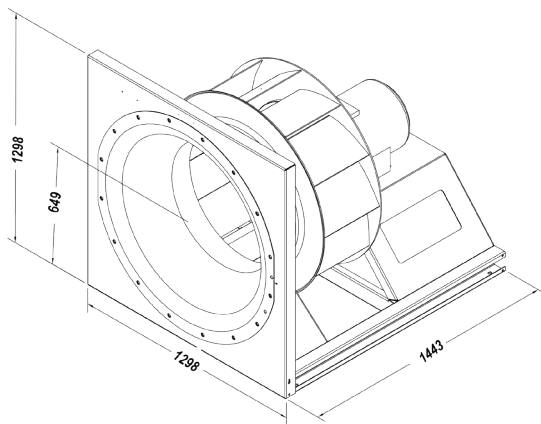
Wheel Diameter (mm) = 914  
Outlet Area (ft<sup>2</sup>) = 20.1  
Outlet Velocity = Volume (ft<sup>3</sup>/20.1)

Model Number	Fan RPM	CFM/Static Pressure in Inches wg											
			0	1	2	3	4	5	6	7			
APM-M-900	1365	CFM	31761	30101	28432	26517	24606	22549	20219	17419			
		kW	10.25	12.43	14.32	15.97	17.48	18.81	19.65	19.57			
		dBA/LwA	88/100	87/99	86/97	85/96	83/95	82/94	81/92	80/91			
	1150	CFM	41759	39863	37770	35629	33419	31130	28580	25756	22542		
		kW	15.2	18.17	20.69	23.02	25.03	26.8	28.3	29.04	29.02		
		dBA/LwA	88/99	87/98	86/97	85/96	84/95	83/94	82/94	81/92	82/94		
			0	0.5	1	1.5	2	2.5	3	3.5	4	4.5	5
	950	CFM	29063	27701	26192	24650	23056	21380	19548	17469	14770		
		kW	5.12	6.16	7.03	7.83	8.52	9.12	9.64	9.83	9.64		
		dBA/LwA	80/92	80/91	79/91	78/90	78/89	77/88	75/87	74/85	75/86		
	875	CFM	26768	25270	23626	21927	20170	18183	15950				
		kW	4	4.94	5.74	6.43	7.01	7.49	7.69				
		dBA/LwA	77/89	76/88	75/87	74/86	73/85	72/83	71/82				

Greenheck India Pvt. Ltd. certifies that the model shown herein is licensed to bear the AMCA Seal. The ratings shown are based on tests and procedures performed in accordance with AMCA Publication 211 and comply with the requirements of the AMCA Certified Ratings Program. The AMCA Certified Ratings Seal applies to air and sound performance ratings. Performance shown is for installation type B: Free inlet, Ducted outlet. Power rating (BHP/kW) does not include transmission losses. Performance ratings do not include the effects of appurtenances in the airstream (accessories). The sound power level ratings shown are in decibels, referred to 10<sup>-12</sup> watts calculated per AMCA Standard 301. The A-weighted sound ratings shown have been calculated per AMCA International Standard 301. Values shown are for inlet LwA, sound power levels for installation type B: free inlet, ducted outlet. Ratings do not include the effects of end correction. dBA levels are not licensed by AMCA International. The AMCA Certified Ratings Seal for Sound applies to inlet LwA ratings only.\* License to Bear The AMCA Seal For Sound and Air Performance.



## APM-M 1000



Unit Weight = 565 Kg  
Dimensions are in millimeters  
Weight shown is the largest catalog motor

Max kW = 36 kW  
Maximum Speed (rpm) = 1238  
Maximum Frame Size = 200L FR

Wheel Diameter (mm) = 1016  
Outlet Area (ft<sup>2</sup>) = 25.3  
Outlet Velocity = Volume (ft<sup>3</sup>)/25.3

Model Number	Fan RPM	CFM/Static Pressure in Inches wg											
			0	1	2	3	4	5	6	7	8	9	10
APM-M-1000	1238	CFM	50787	48483	45939	43335	40646	37863	34764	31330	27315		
		kW	18.49	22.1	25.17	28.01	30.45	32.6	34.43	35.32	35.31		
		dBA/LwA	100/88	99/87	98/86	97/85	96/84	95/83	94/83	83/82	94/83		
	1150	CFM	47177	44676	41917	39083	36140	32885	29257	24912			
		kW	14.82	18.14	20.95	23.46	25.53	27.3	28.29	28.25			
		dBA/LwA	98/86	97/85	96/84	95/83	94/82	92/81	91/80	93/81			
	950		0	0.5	1	1.5	2	2.5	3	3.5	4	4.5	5
		CFM	38973	37471	35845	34173	32449	30675	28830	26811	24604	22176	
		kW	8.36	9.74	10.96	12.12	13.13	14	14.81	15.51	15.9	16.04	
		dBA/LwA	94/82	93/81	92/81	92/80	91/80	90/79	90/78	88/77	87/76	87/75	
	875	CFM	35896	34266	32466	30623	28721	26751	24559	22128	19283		
		kW	6.53	7.81	8.89	9.89	10.75	11.51	12.16	12.47	12.46		
		dBA/LwA	92/80	91/80	91/80	90/78	89/78	88/77	87/75	85/74	86/74		

Greenheck India Pvt. Ltd. certifies that the model shown herein is licensed to bear the AMCA Seal. The ratings shown are based on tests and procedures performed in accordance with AMCA Publication 211 and comply with the requirements of the AMCA Certified Ratings Program. The AMCA Certified Ratings Seal applies to air and sound performance ratings. Performance shown is for installation type B: Free inlet, Ducted outlet. Power rating (BHP/kW) does not include transmission losses. Performance ratings do not include the effects of appurtenances in the airstream (accessories). The sound power level ratings shown are in decibels, referred to 10<sup>-12</sup> watts calculated per AMCA Standard 301. The A-weighted sound ratings shown have been calculated per AMCA International Standard 301. Values shown are for inlet LwA, sound power levels for installation type B: free inlet, ducted outlet. Ratings do not include the effects of end correction. dBA levels are not licensed by AMCA International. The AMCA Certified Ratings Seal for Sound applies to inlet LwA ratings only.\* License to Bear The AMCA Seal For Sound and Air Performance.





# Design and Selection Support

Enjoy Greenheck's extraordinary service, before, during and after the sale.

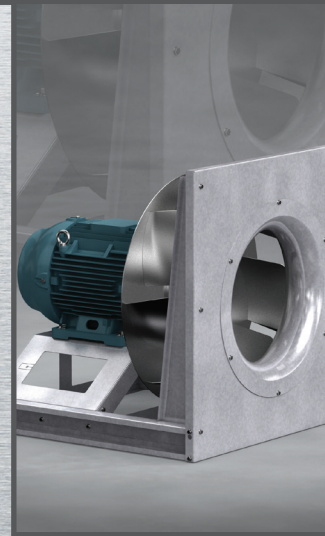
Greenheck offers added value to our wide selection of top performing, energy-efficient products by providing several unique Greenheck service programs.



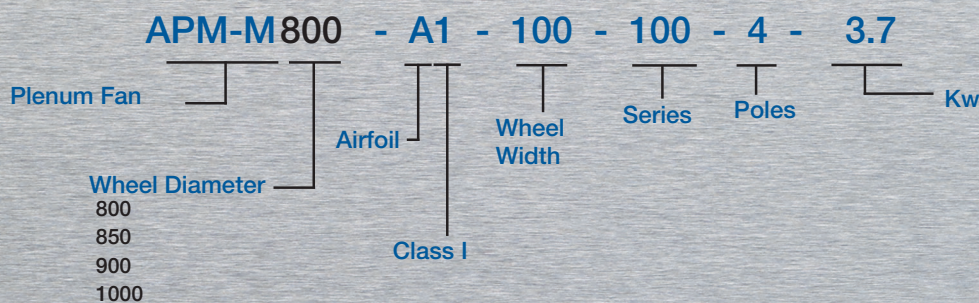
Greenheck's free Computer Aided Product Selection program (CAPS), rated by many as the best in the industry, helps you conveniently and efficiently select the right products for the challenge at hand.

Greenheck continues to take an industry-wide leadership position to affect positive global sustainability. We believe that providing education on products we offer contributes to reducing energy consumption and improving healthier indoor environments.

Find out more about these Greenheck services at [www.greenheck.co.in](http://www.greenheck.co.in)



## Model Number



## Building Value in Air

Greenheck delivers value to mechanical engineers by helping them solve virtually any air quality challenges their clients face with a comprehensive selection of

top quality, innovative air-related equipment. We offer extra value to contractors by providing easy-to-install, competitively priced, reliable products that arrive on time.

And building owners and occupants value the energy efficiency, low maintenance and quiet dependable operation they experience long after the construction project ends.

## Our Commitment

*As a result of our commitment to continuous improvement, Greenheck reserves the right to change specifications without notice.*



International  
00.INT.2039 R1 3-2024  
Copyright © 2024 Greenheck Fan Corp.

Greenheck India: 201-202, 2nd Floor, Landmark Cyber Park, Sector-67, Gurgaon, Haryana-122018 • [www.greenheck.co.in](http://www.greenheck.co.in)

Greenheck U.S.A.: P.O. Box 410 • Schofield, WI 54476-0410 • Phone +1 (715) 359-6171 • [www.greenheck.com](http://www.greenheck.com)

Greenheck India Private Ltd has been independently audited and confirmed as being in conformity with ISO 9001:2015 and ISO 14001:2015.

