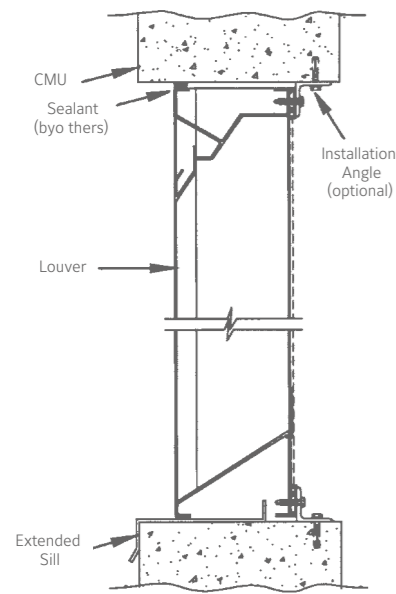
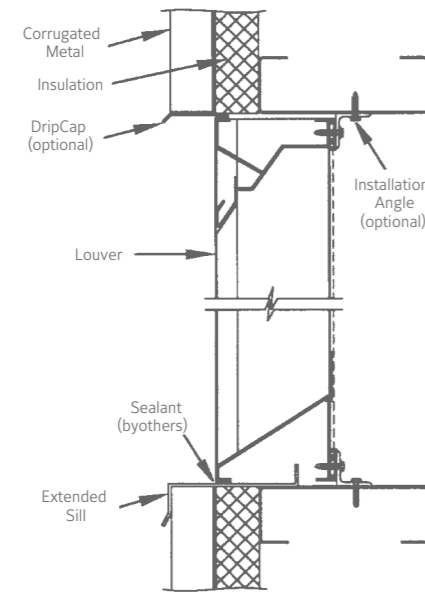


TYPICAL INSTALLATION DETAILS

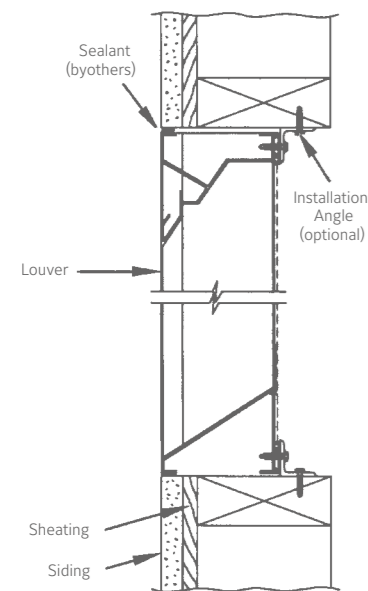
Masonry Wall



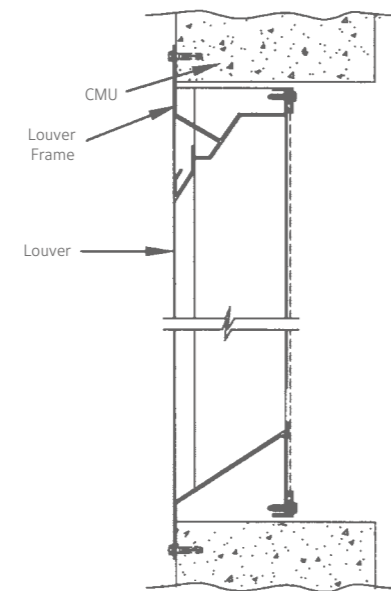
Metal Panel Wall



Wood Installation



Flange Mount



Options are available at additional cost. Fasteners into substrate are not provided by *Ruskin*®.

Johnson Controls:

At Johnson Controls, we transform the environments where people live, work, learn and play. From optimizing building performance to improving safety and enhancing comfort, we drive the outcomes that matter most. We deliver our promise in industries such as healthcare, education, data centers and manufacturing. With a global team of 105,000 experts in more than 150 countries and over 130 years of innovation, we are the power behind our customers' mission. Our leading portfolio of building technology and solutions includes some of the most trusted names in the industry, such as Tyco®, York®, Metasys®, Ruskin®, Titus®, Frick®, Penn®, Sabroe®, Simplex®, Ansul® and Grinnell®.

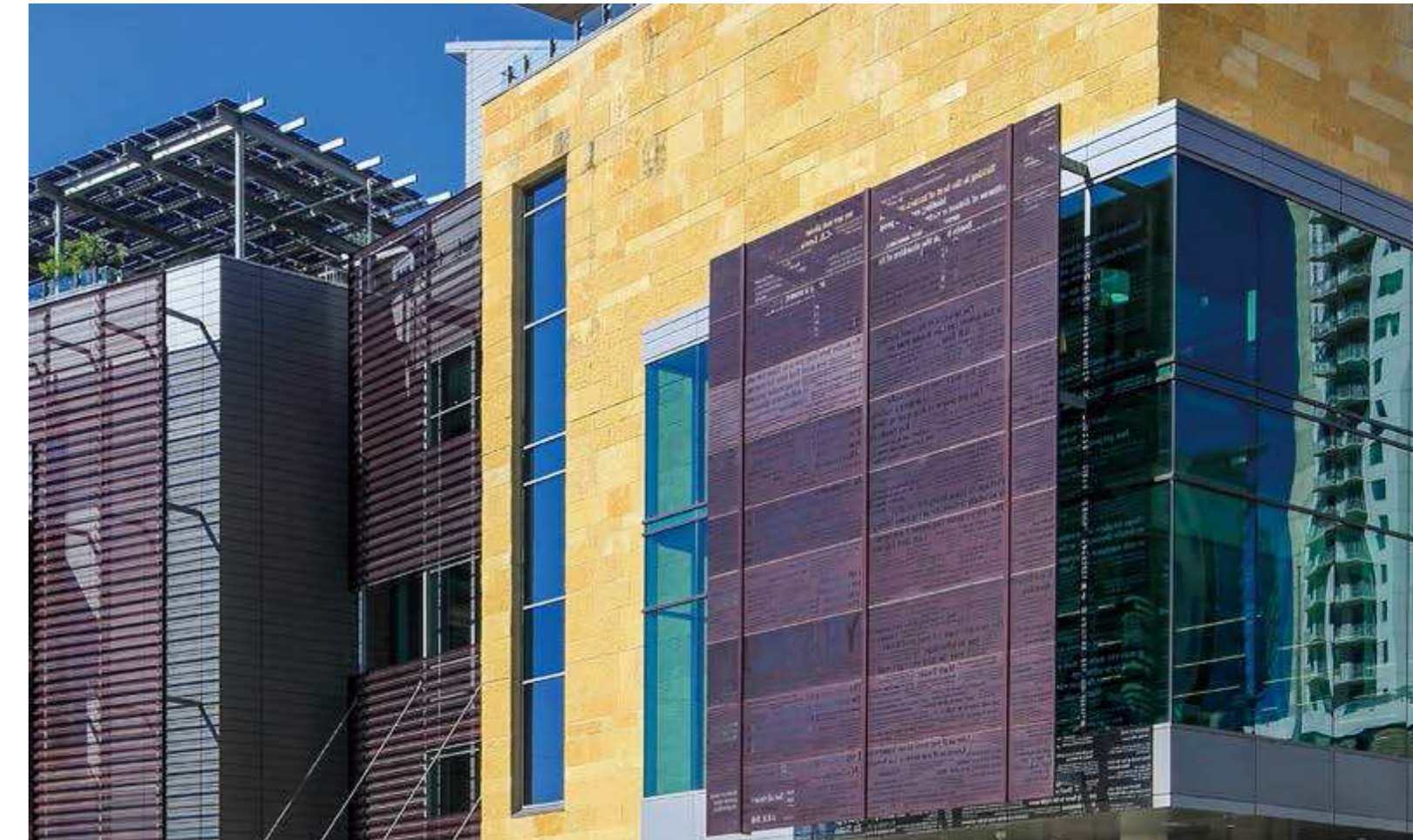
For more information, visit www.johnsoncontrols.com or follow us @johnsoncontrols on Twitter.

Suite 1102, API World Tower
 Sheikh Zayed Road
 Dubai 00000 United Arab Emirates
 Phone: 971 4 309 9999
 Fax: 971 4 309 9695
 Contact: sales@ruskintitus.com
 Website: www.ruskintitus.com

The power behind your mission



ELF375DX DRAINABLE STATIONARY LOUVER



EXTRUDED ALUMINUM

The power behind your mission



STANDARD CONSTRUCTION

FRAME

4" (102) deep, 6063T6 extruded aluminum. .081" (2.1) nominal wall thickness. Downspouts and caulking surfaces provided.

BLADES

6063T6 extruded aluminum. .081" (2.1) nominal wall thickness. Drainable blades are positioned at 37½° angle and spaced approximately 5¾" (129) center to center.

SCREEN

5/8" x .040" (16 x 1) expanded, flattened aluminum bird screen in removable frame. Screen adds approximately ½" (13) to louver depth.

FINISH

Mill.

MINIMUM SIZE

12"w x 12"h (305 x 305).

APPROXIMATE SHIPPING WEIGHT

4 lbs./ft.² (19.5 kg/m²).

MAXIMUM FACTORY ASSEMBLY SIZE

Single sections shall not exceed 120"w x 90"h (3048 x 2286) or 90"w x 120"h (2286 x 3048). Louvers larger than the maximum single section size will require field assembly of smaller sections.

BLADE SUPPORTS

Louvers may be provided with rear mounted blade supports that increase overall louver depth depending on louver size, assembly configuration or windload.

Consult Ruskiti® for additional information.

Dimensions in parenthesis () indicate millimeters.

TAG	QTY.	SIZE		FRAME	VARIATIONS
		A*-WIDE	B*-HIGH		
PROJECT ARCH./ENGR. REPRESENTATIVE		LOCATION CONTRACTOR DATE			

ALL STATED SPECIFICATIONS ARE SUBJECT TO CHANGE WITHOUT NOTICE OR OBLIGATION

FEATURES

The ELF375DX offers:

- 54% Free Area.
- Published performance ratings based on testing in accordance with AMCA Publication 511.
- High performance frame system with drainable head collects and removes water to provide excellent water penetration performance.
- Drain gutter in each blade minimizes water cascade between blades.
- Architecturally styled, hidden mullions allowing continuous line appearance up to 120" (3048).
- Aluminum construction for low maintenance and high resistance to corrosion.
- All welded construction.

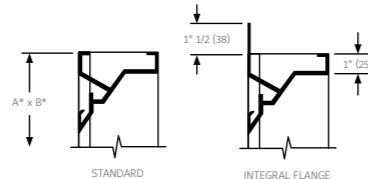
VARIATIONS

Variations to the basic design of this louver are available at additional cost. They include:

- Front or rear security bars.
- Filter racks.
- A variety of bird and insect screens.
- Selection of finishes: prime coat, 50% PVDF, 70% PVDF, epoxy, Pearledize 50 & 70(mica), clear and color anodize. (Some variation in anodize color consistency is possible.)

Consult Ruskiti® for other special requirements.

FRAME CONSTRUCTION



*Units furnished ¼" (6) smaller than given opening dimensions.

SUGGESTED SPECIFICATION

GENERAL

Furnish and install at locations shown on the plans or as described in schedules drainable louvers. Stationary louvers shall be manufactured in an ISO 9001 certified factory.

Stationary louvers shall be furnished with bird and/or insect screens, supports and finishes as specified and as required for a complete installation. Stationary louvers shall incorporate drainable stationary blade. All blades and frames shall be constructed of 6063-T6 aluminum alloy.

MATERIAL

Stationary louvers shall be 4" (102) deep. Louver blade and frame nominal wall thickness shall be .081" (2.1) for ELF375DX Integral gutters shall be incorporated into blades, louver head and jamb frames.

PERFORMANCE

Water Penetration and Air Performance confirm to the following minimum requirements:

Free Area: 8.58 Square Feet (0.80 m²).
Maximum pressure drop at 1000 fpm (305 m/min): 0.20" w.g. (0.05 kPA).

Free Area Velocity at Beginning Point of Water Penetration: 873 fpm (+266 m/min).

STRUCTURAL DESIGN

Integral structural supports shall be designed and furnished by the louver manufacturer to carry a wind load of not less than 20 psf (.96 kPA).

FINISH

Stationary louvers shall be finished as specified by the architect. Powder coated finishes are available in different RAL colors with dry film thickness of approximately 0.3 mil after baking at 350°F, for 10 to 15 minutes and cooled at ambient temperature.

PERFORMANCE DATA

AMCA Standard 500 provides a reasonable basis for testing and rating louvers. Testing to AMCA 500 is performed under a certain set of laboratory conditions. This does not guarantee that other conditions will not occur in the actual environment where louvers must operate.

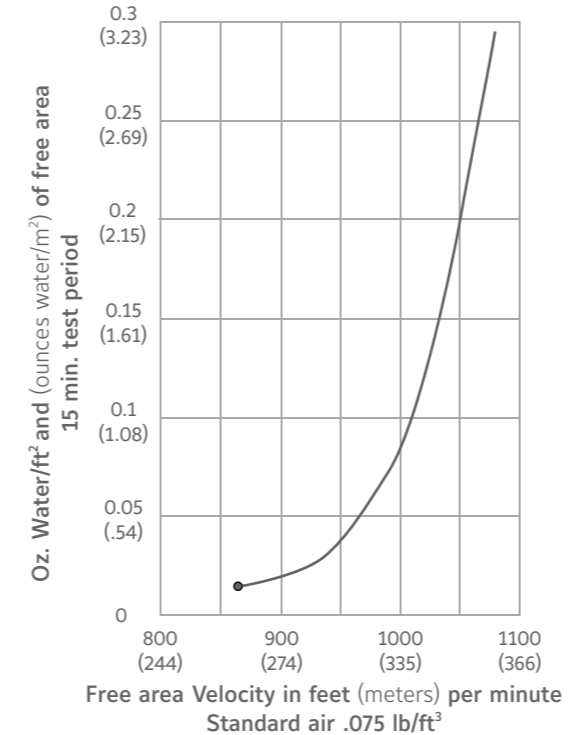
The louver system should be designed with a reasonable safety factor for louver performance. To ensure protection from water carryover, design with a performance level somewhat below maximum desired pressure drop and .01 oz./sq. ft. of water penetration.



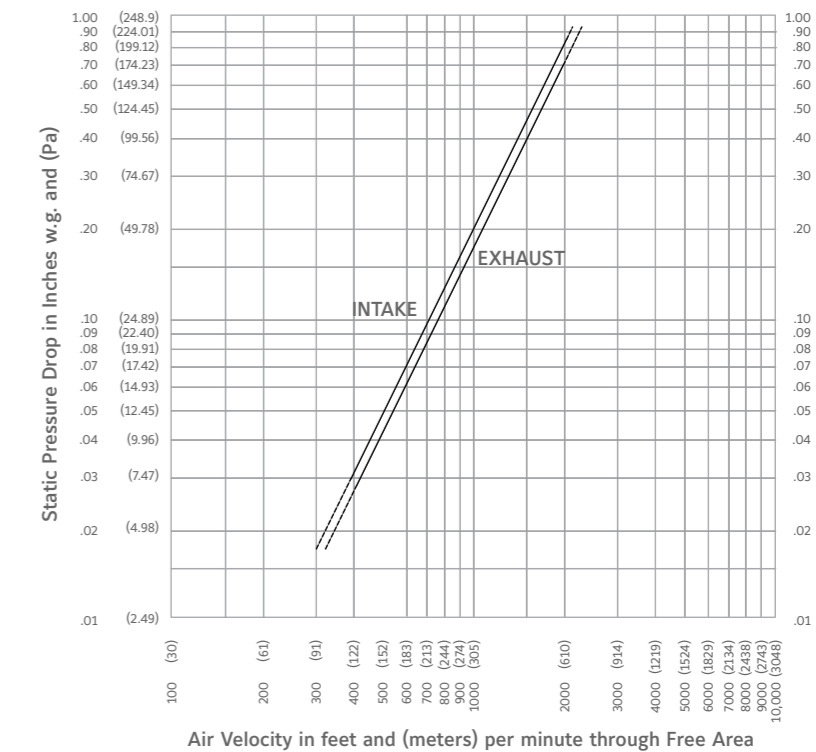
RuskinTitus Gulf certifies that the ELF375DX Louvers shown herein are licensed to bear the AMCA Seal. The ratings shown are based on tests and procedures performed in accordance with AMCA Publication 511 and comply with the requirements of the AMCA Certified Ratings Program. The AMCA Certified Ratings Seal applies to water penetration ratings and air performance ratings only.

WATER PENETRATION

Test size 48" wide X 48" high (1219 X 1219)
Beginning point of water penetration at .01 oz./sq.ft. is 873 fpm (266 m/min).



PRESSURE DROP



Note: Ratings do not include the effect of a bird screen.

FREE AREA GUIDE

Free Area Guide shows free area in ft² and m² for various sizes of ELF375DX
Width – Inches and Meters

	12	18	24	30	36	42	48	54	60	66	72	78	84	90	96	102	108	114	120	
	0.30	0.46	0.61	0.76	0.91	1.07	1.22	1.37	1.52	1.68	1.83	1.98	2.13	2.29	2.44	2.59	2.74	2.90	3.05	
12	0.26	0.41	0.56	0.71	0.87	1.02	1.17	1.33	1.48	1.63	1.79	1.94	2.09	2.24	2.40	2.55	2.70	2.86	3.01	
18	0.61	0.97	1.33	1.70	2.06	2.43	2.79	3.15	3.52	3.88	4.25	4.61	4.97	5.34	5.70	6.06	6.43	6.79	7.16	
24	0.87	1.40	1.92	2.45	2.97	3.50	4.02	4.55	5.07	5.60	6.12	6.65	7.17	7.70	8.22	8.75	9.27	9.80	10.32	
30	1.14	1.83	2.51	3.20	3.89	4.57	5.26	5.94	6.63	7.32	8.00	8.69	9.37	10.06	10.74	11.43	12.12	12.80	13.49	
36	1.33	2.13	2.92	3.72	4.52	5.31	6.11	6.91	7.70	8.50	9.30	10.09	10.89	11.69	12.49	13.28	14.08	14.88	15.67	
42	1.60	2.55	3.51	4.47	5.43	6.39	7.34	8.30	9.26	10.22	11.18	12.13	13.09	14.05	15.01	15.96	16.92	17.88	18.84	
48	1.86	2.98	4.10	5.22	6.34	7.46	8.58	9.70	10.82	11.93	13.05	14.17	15.29	16.41	17.53	18.65	19.77	20.89	22.00	
54	2.13	3.41	4.69	5.97	7.25	8.53	9.81	11.09	12.37	13.65	14.93	16.21	17.49	18.77	20.05	21.33	22.61	23.89	25.17	
60	2.40	3.84	5.28	6.72	8.16	9.61	11.05	12.49	13.93	15.37	16.81	18.25	19.69	21.13	22.57	24.01	25.45	26.90	28.34	
66	2.59	4.14	5.69	7.24	8.79	10.35	11.90	13.45	15.00	16.55	18.11	19.66	21.21	22.76	24.31	25.86	27.42	28.97	30.52	
72	2.85	4.57	6.28	7.99	9.71	11.42	13.13	14.84	16.56	18.27	19.98	21.70	23.41	25.12	26.83	28.55	30.26	31.97	33.69	
78	3.12	5.00	6.87	8.74	10.62	12.49	14.37	16.24	18.11	19.99	21.86	23.74	25.61	27.48	29.36	31.23	33.10	34.98	36.85	
84	3.39	5.43	7.46	9.50	11.53	13.57	15.60	17.63	19.67	21.70	23.74	25.77	27.81	29.84	31.88	33.91	35.95	37.98	40.02	
90	3.66	5.86	8.05	10.25	12.44	14.64	16.83	19.03	21.23	23.42	25.62	27.81	30.01	32.20	34.40	36.60	38.79	40.99	43.18	
	2.29	0.34	0.54	0.75	0.95	1.16	1.36	1.56	1.77	1.97	2.18	2.38	2.58	2.79	2.99	3.20	3.40	3.60	3.81	4.01