

### GENERAL

Ventline District Cooling Louvers is designed to provide weather resistance and vision barriers. VCD-150 is suitable for special application for enclosing MEP equipments and can supplied with concealed mullions for continuous blade or modular assemblies. Vertically installed into the wall opening or parapet of the building.

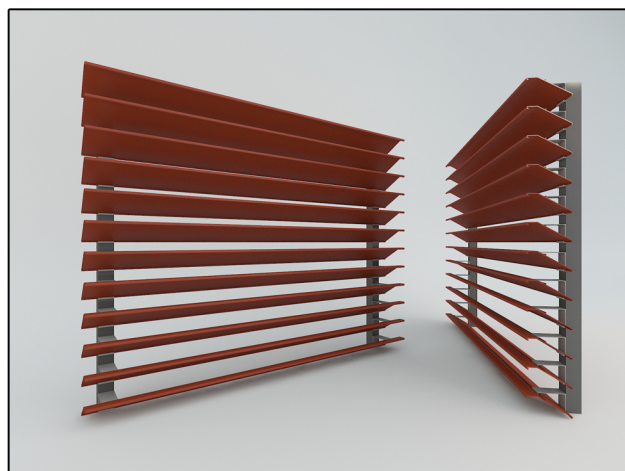
### CONSTRUCTION

Manufactured from aluminium extrusion Alloy 6063 T6 mechanically jointed.

Frame/Mullion . . . . . 3.0mm (T) Al. Extrusion  
Blade . . . . . 2.0mm (T) Al. Extrusion  
Blade Spacing. . . . . 125mm (5")  
Depth . . . . . 150mm (6")  
Free Area (%) . . . . . 73%  
Vision Barriers. . . . . 72%  
Continuous . . . . . Unlimited Size  
Min. Size (Modular) . . . . . 300x300 (mm)  
Max. Size (Modular) . . . . . 2400x2400(mm)  
Louver Clearance . . . . . 1/4 inch. less  
Larger Sizes in multiple section  
Finish . . . . . Mill Finish, Powder coated, Epoxy coated, PVDF and Natural Anodizing. Special coating is available upon request.

### OPTIONAL FEATURE

Blank Panels. . . . . Double wall or Single skin  
Mullion . . . . . more than 1.8m width  
Support screen . . . . . with Birdmesh or Insect mesh from Aluminium, Galvanized or Stainless steel.  
Filter Rack . . . . . Washable type  
Openable Louver . . . . . Hinged/Pinned  
Welded Assembly . . . . . Frames and blade with fillet welds concealed from view. Each weld has 25.4mm (1-inch) min. in length with 3.175mm (1/8 – inch) leg.





### SUGGESTED SPECIFICATION

Manufacture and install as specified hereinafter where shown on plans or as described in schedules. Louvers shall be stationary type entirely contained a 5" (150) frame. Louver components (heads, jambs, cills, blades and mullions) shall be factory assembled by Ventline. Louver sizes too large for shipping shall be made in modules for easy handling.

Louvers shall be Ventline Model VDC-150 constructions as follows:

Frame: 2mm (T) Extruded Aluminium – Alloy 6063T5/T6  
Blades: Degrees 2mm (T) Extruded Aluminium – Alloy 6063T5/T6  
Screen: If applicable only  
Finish: To be selected from Standard RAL colour charts (Other colour is available upon request)

DATE	DESIGNER			ENGINEER	 <b>VentLine</b> Ventilation and Acoustic Solutions P.O. Box : 77261 , Dubai, UAE Tel.: +971 4 341 9538, Fax: +971 4 3419548 Email: info@ventline.ae Website: www.ventlineinternational.com Head Office 6444 Santa Fe Drive, TX, USA, 75056, 3276 Tel.: +1 469 767 6579 Fax: +1 972 668 2553
PROJECT					
ITEM	QTY	W	H		
					 Ventline certifies that the model VDC-150 shown herein is licensed to bear the AMCA seal. The ratings shown are based on test and procedures performed in accordance with AMCA Publication 511 and comply with the requirements of the AMCA Certified Ratings Program. The AMCA Certified Seal applies to air performance ratings.

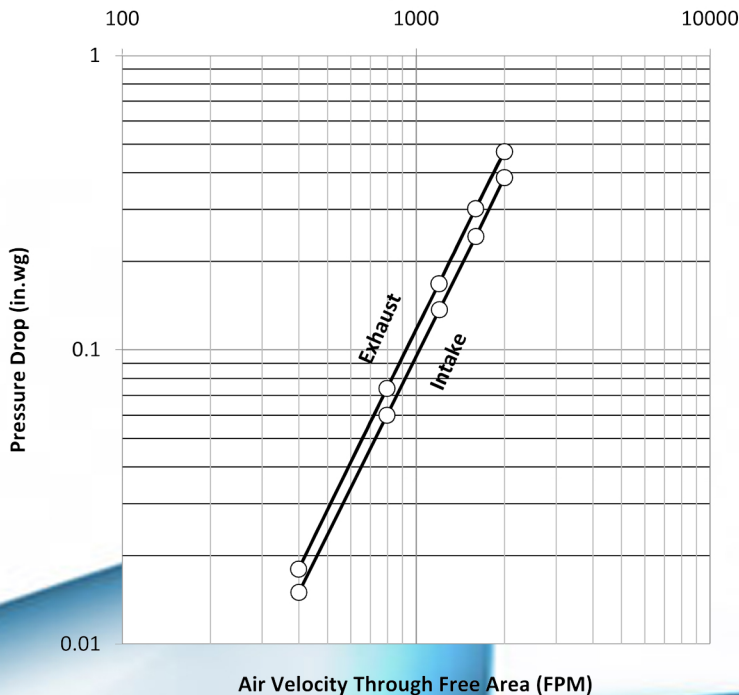
### FREE AREA CALCULATIONS in SQ. FT.

			WIDTH - FT²																		
			INCHES		12	18	24	30	36	42	48	54	60	66	72	78	84	90	96	102	108
	MM	305	457	610	762	914	1067	1219	1372	1524	1676	1828	1981	2134	2286	2438	2591	2743	2898	3048	
HEIGHT - FT²																					
	12	305	0.83	1.24	1.66	2.07	2.48	2.90	3.31	3.73	4.14	4.55	4.97	5.38	5.80	6.21	6.62	7.04	7.45	7.87	8.28
	18	457	0.91	1.36	1.81	2.27	2.72	3.17	3.63	4.08	4.53	4.98	5.44	5.89	6.35	6.80	7.25	7.71	8.16	8.62	9.06
	24	610	1.20	1.80	2.40	3.00	3.60	4.20	4.80	5.40	6.00	6.60	7.20	7.80	8.41	9.00	9.60	10.21	10.80	11.42	12.01
	30	762	1.58	2.37	3.16	3.94	4.73	5.52	6.31	7.10	7.89	8.67	9.46	10.25	11.05	11.83	12.62	13.41	14.20	15.00	15.78
	36	914	1.87	2.80	3.74	4.67	5.60	6.54	7.47	8.41	9.34	10.27	11.21	12.14	13.08	14.01	14.94	15.88	16.81	17.76	18.68
	42	1067	2.25	3.37	4.50	5.62	6.74	7.87	8.99	10.12	11.24	12.36	13.49	14.61	15.74	16.86	17.99	19.11	20.24	21.38	22.49
	48	1219	2.54	3.81	5.08	6.35	7.61	8.89	10.16	11.43	12.70	13.96	15.23	16.50	17.78	19.04	20.31	21.59	22.85	24.14	25.39
	54	1372	2.92	4.38	5.84	7.30	8.75	10.22	11.68	13.14	14.60	16.05	17.51	18.97	20.44	21.90	23.35	24.82	26.27	27.76	29.19
	60	1524	3.21	4.81	6.43	8.03	9.63	11.24	12.84	14.45	16.05	17.65	19.25	20.87	22.48	24.08	25.68	27.29	28.89	30.52	32.10
	66	1676	3.59	5.38	7.18	8.97	10.76	12.56	14.35	16.15	17.94	19.72	21.51	23.31	25.12	26.90	28.69	30.49	32.28	34.11	35.87
	72	1828	3.88	5.81	7.76	9.69	11.63	13.58	15.51	17.46	19.39	21.32	23.26	25.20	27.15	29.08	31.02	32.97	34.90	36.87	38.78
	78	1981	4.26	6.38	8.52	10.65	12.77	14.91	17.03	19.17	21.29	23.42	25.54	27.68	29.81	31.94	34.06	36.20	38.32	40.49	42.58
	84	2134	4.55	6.82	9.11	11.38	13.65	15.93	18.20	20.49	22.76	25.03	27.30	29.58	31.87	34.14	36.41	38.69	40.96	43.28	45.52
	90	2286	4.93	7.39	9.86	12.32	14.78	17.25	19.71	22.19	24.64	27.10	29.56	32.03	34.51	36.97	39.42	41.90	44.36	46.86	49.29
	96	2438	5.22	7.83	10.45	13.05	15.65	18.27	20.88	23.50	26.10	28.70	31.30	33.92	36.54	39.15	41.75	44.37	46.97	49.63	52.20
	102	2591	5.60	8.40	11.21	14.00	16.79	19.60	22.40	25.21	28.00	30.79	33.58	36.39	39.21	42.00	44.79	47.60	50.39	53.24	56.00
108	2743	5.89	8.83	11.79	14.73	17.66	20.62	23.56	26.52	29.45	32.39	35.33	38.28	41.24	44.18	47.12	50.07	53.01	56.01	58.91	
114	2898	6.27	9.40	12.55	15.68	18.80	21.95	25.08	28.23	31.35	34.48	37.61	40.76	43.90	47.03	50.16	53.30	56.43	59.62	62.71	
120	3048	6.57	9.84	13.14	16.41	19.68	22.98	26.25	29.55	32.82	36.10	39.37	42.66	45.96	49.23	52.51	55.80	59.08	62.41	65.64	

### Air Performance (Standard Air .075 lb/ft<sup>3</sup>)

Tested Size: - 48 in. x 48 in. (1219 x 1219)

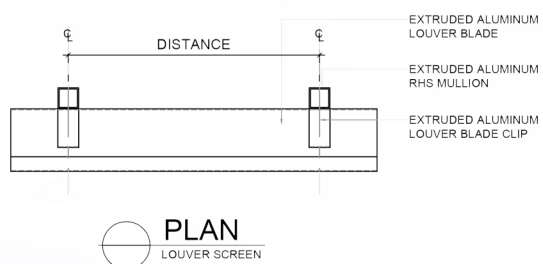
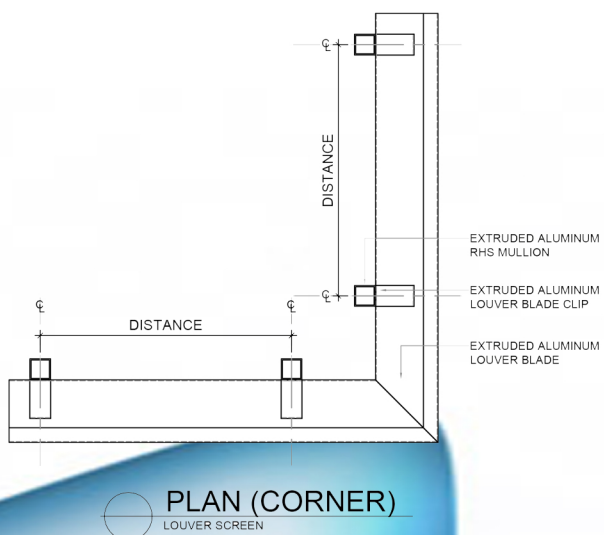
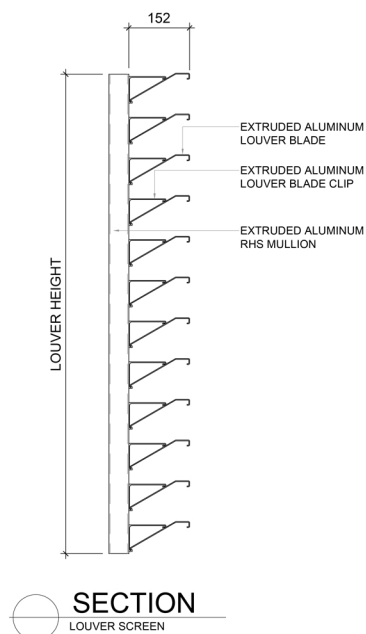
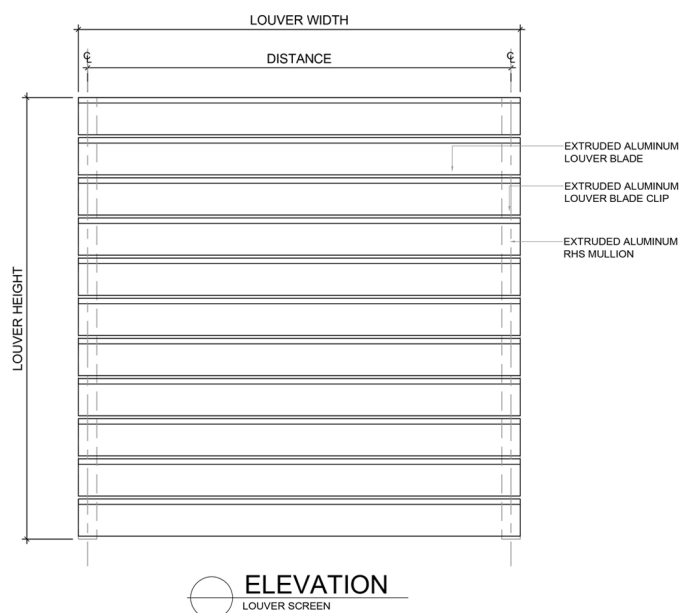
Tested in accordance with ANSI/AMCA 500-L



Ventline certifies that the model VDC-150 shown herein is licensed to bear the AMCA seal. The ratings shown are based on test and procedures performed in accordance with AMCA Publication 511 and comply with the requirements of the AMCA Certified Ratings Program. The AMCA Certified Seal applies to air performance ratings.

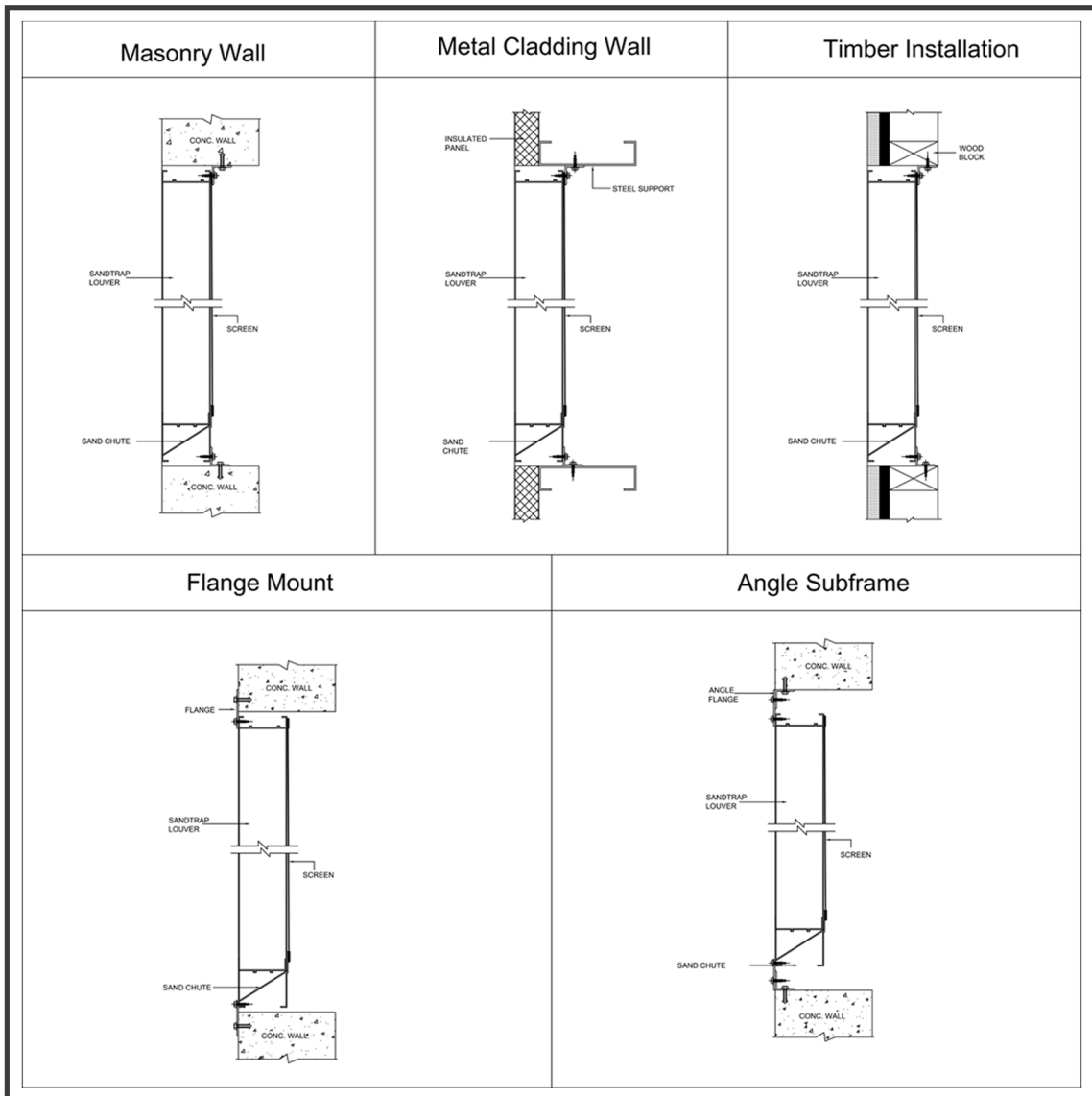
Test Method per ANSI / AMCA Standard 500 L-12 (Pressure Drop)  
Figure 5.5

## TYPICAL DRAWINGS AND DETAILS - VDC-150





## TYPICAL INSTALLATION DETAILS



## FINISHES

**POWDER COATING:** Louver shall be cleaned, pre-treated and **FINISHED-AFTER-ASSEMBLY** with an inhibitive primer and oven-cured polyester powder coatings complies with BS6496:1984 and Qualicoat requirement. Normally 70 to 90 microns.

**PVDF COATING:** Louver shall be cleaned, pre-treated and **FINISHED-AFTER-ASSEMBLY** with an inhibitive primer and Kynar resin coating with minimum 1.2 mils dry-film coating thickness that complies with AAMA2605-05. "Voluntary Specification, Performance Requirements and Tests Procedures for Superior Performance Organic Coicoat requirements.

**ANODIZE:** Louver shall be **FINISHED-AFTER-ASSEMBLY** with class 1 clear anodized or electrolytically color anodized coating that complies with AAMA Specification 611-98, "Voluntary Specification for Anodized Architectural Aluminium". Color shall be from Gold, Silver and Black Matt or Polished.

**EPOXY PAINT:** Louver shall be cleaned, pre-treated and **FINISH-AFTER-ASSEMBLY** with an oven cured thermosetting enamel finish in compliance with AAMA 2603, "Voluntary Specification Performance Requirements and Test Procedures for Pigmented Organic Coatings"