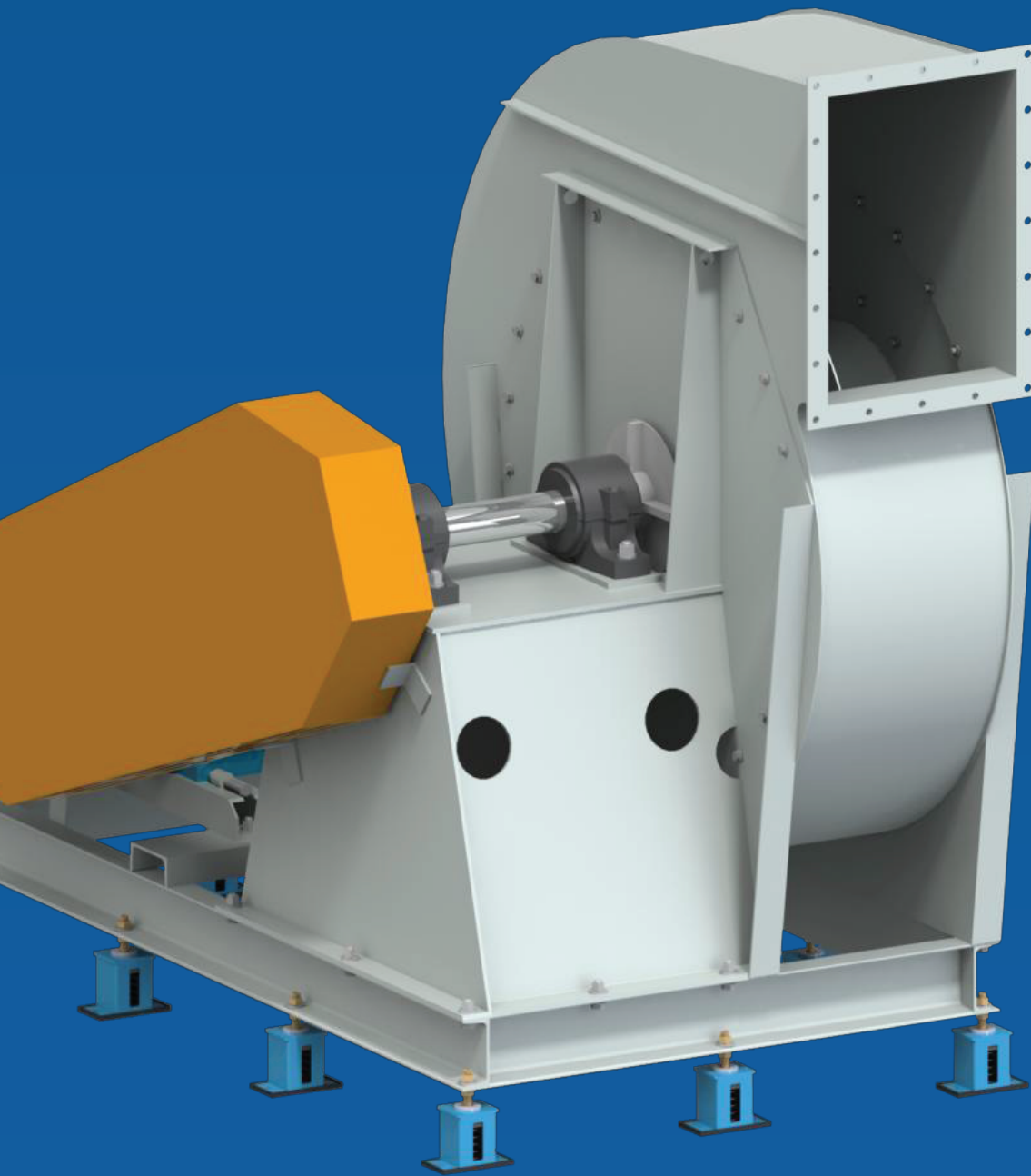


SCH-HC670

高效中压离心通风机

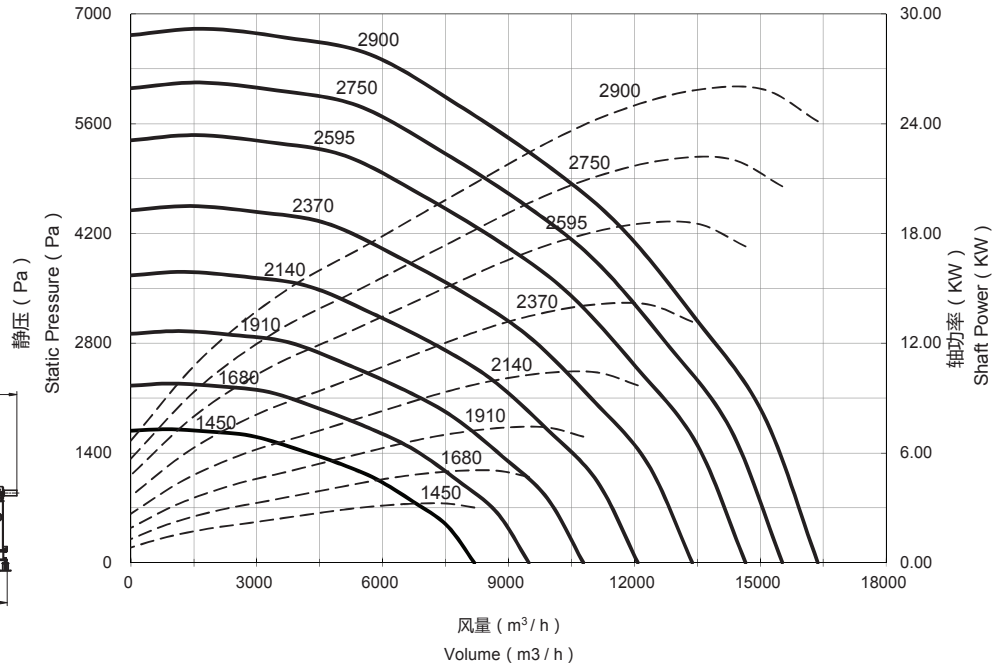
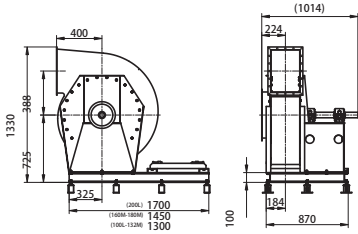


Shanghai Walker General Equipment Co. Ltd certifies that the SCH-HC670 Centrifugal Fan shown herein is licensed to bear the AMCA Seal. The ratings shown are based on tests and procedures performed in accordance with AMCA Publication 211 and AMCA Publication 311 and comply with the requirements of the AMCA Certified Ratings Program.



Walker Company

叶轮直径 Wheel Diameter – 665mm
 最大转速 Max RPM – 2900 RPM
 最大风量 Max Volume – 16500 m³/h
 最大静压 Max SP – 6700 Pa
 运输体积 Transport volume – 4.11m³



NO.	转速 RPM	静压 Pa	风量 CMH	静压 in.Wg	八段倍频								声功率级 LwA	声压级@1.5m LpA(dBA)
					1	2	3	4	5	6	7	8		
1	1450	0	8387	0.000	88	91	94	94	92	88	83	77	96	84
		1065	5767	4.279	87	90	92	90	85	79	74	69	91	79
		1621	3061	6.511	88	90	92	89	82	77	73	70	89	77
		1682	2482	6.758	89	92	94	90	83	77	75	72	90	78
2	1680	0	9718	0.000	91	94	98	97	96	92	88	82	100	88
		1430	6681	5.744	89	93	96	94	90	83	78	73	95	83
		2176	3546	8.740	90	92	95	93	87	80	77	74	93	81
		2258	2875	9.072	92	95	97	94	88	81	78	76	95	83
3	1910	0	11048	0.000	94	95	100	100	99	96	92	86	103	91
		1848	7596	7.424	91	95	98	97	93	86	82	77	98	86
		2812	4032	11.297	93	94	98	97	91	84	80	77	97	85
		2919	3269	11.727	94	97	100	98	92	84	82	79	98	86
4	2140	0	12378	0.000	96	98	102	103	102	99	95	89	106	94
		2320	8511	9.320	94	97	100	101	97	90	85	80	101	89
		3530	4518	14.181	95	97	100	100	95	88	84	80	100	88
		3664	3663	14.721	97	99	102	102	96	88	85	82	102	90
5	2370	0	13709	0.000	98	100	103	105	104	101	98	92	109	97
		2845	9425	11.431	96	98	102	103	99	93	88	83	104	92
		4330	5003	17.393	98	99	101	102	98	91	86	83	103	91
		4494	4056	18.055	99	101	103	104	99	91	87	85	104	92
6	2595	0	15010	0.000	100	101	105	107	106	104	100	95	111	99
		3411	10320	13.704	98	100	103	105	102	96	91	86	106	94
		5191	5478	20.853	100	100	103	104	100	94	89	85	105	93
		5388	4441	21.646	101	102	105	106	101	94	90	87	106	94
7	2750	0	15907	0.000	102	102	106	108	108	106	102	97	112	100
		3831	10937	15.390	99	101	104	106	103	98	92	88	108	96
		5829	5805	23.418	101	102	104	106	102	96	90	87	106	94
		6051	4707	24.309	102	103	106	108	103	96	91	88	108	96
8	2900	0	16774	0.000	103	103	107	109	109	107	103	98	113	101
		4260	11533	17.115	101	102	105	107	105	100	94	89	109	97
		6483	6122	26.043	102	103	105	107	104	98	92	88	108	96
		6729	4963	27.034	103	104	107	109	105	98	92	90	109	97

Performance certified is for installation type B – free inlet, ducted outlet. Power rating (kW) does not include transmission losses. Performance ratings do not include the effects of appurtenances (accessories). Values shown are for inlet Lwi and LwiA sound power levels for installation type B: free inlet, ducted outlet. The sound power level ratings shown are in decibels, referred to 10⁻¹² watts, calculated per AMCA International Standard 301. The A-weighted sound ratings shown have been calculated per AMCA International Standard 301. Sound pressure level LpA (dBA) are not licensed by AMCA International.



Walker Company

中国 上海

更多详情请登录网站

www.walker-fan.com

