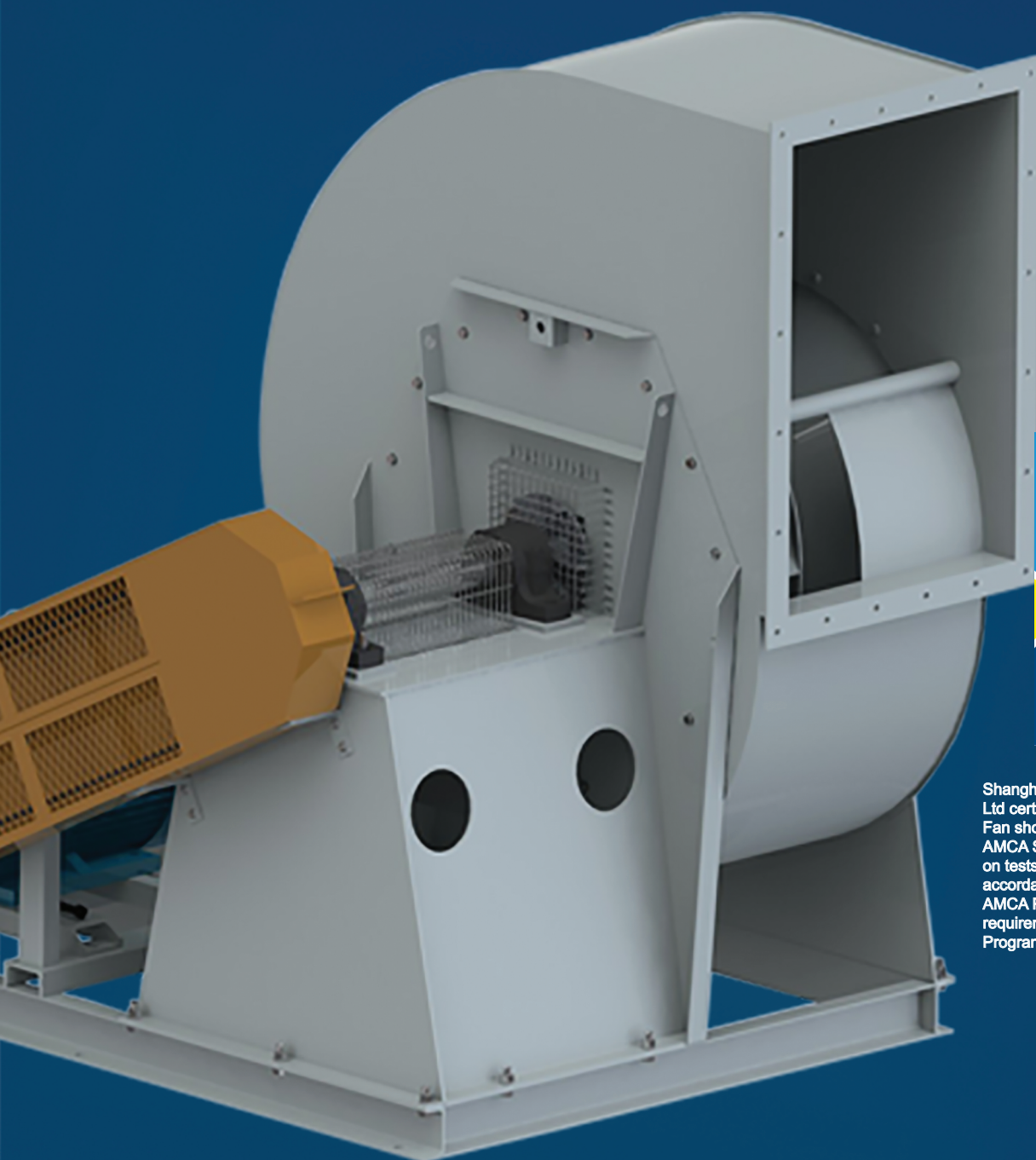


SCH-HB600

高效低压离心通风机

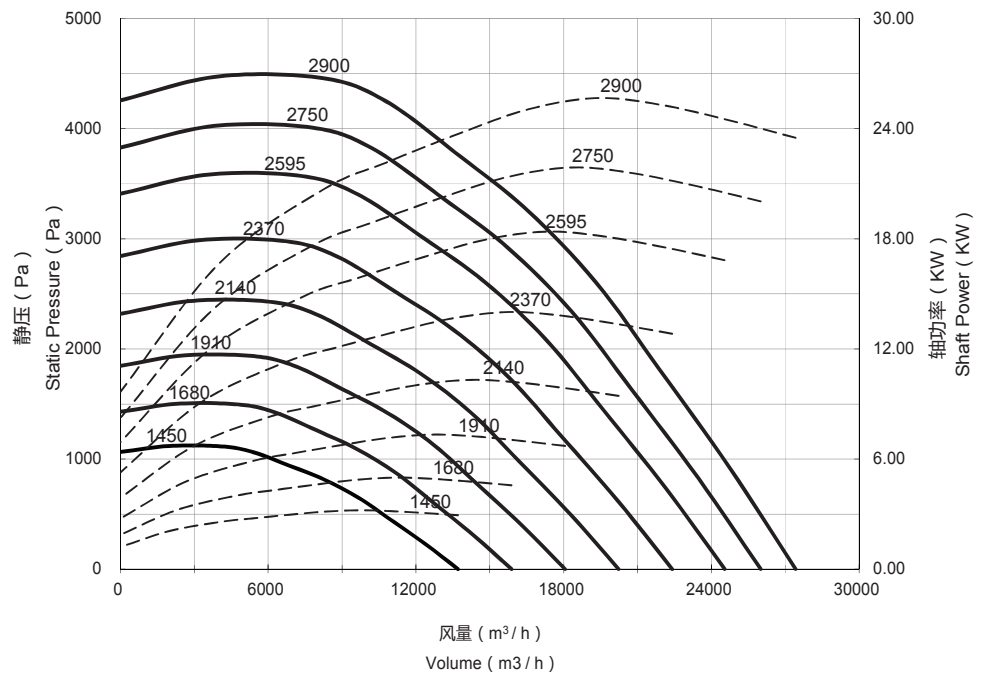
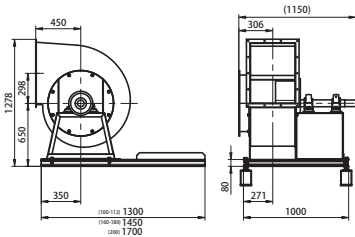


Shanghai Walker General Equipment Co. Ltd certifies that the SCH-HB600 Centrifugal Fan shown herein is licensed to bear the AMCA Seal. The ratings shown are based on tests and procedures performed in accordance with AMCA Publication 211 and AMCA Publication 311 and comply with the requirements of the AMCA Certified Ratings Program.



Walker Company

叶轮直径 Wheel Diameter – 595 mm
最大转速 Max RPM – 2900 RPM
最大风量 Max Volume – 27400 m³/h
最大静压 Max SP – 4300 Pa
运输体积 Transport volume – 3.73 m³



| NO. | 转速 | 静压 | 风量 | 静压 | 八段倍频(Lw) | | | | | | | | 声功率级 | 声压级@1.5m |
|-----|------|------|-------|--------|----------|-----|-----|-----|-----|-----|-----|----|------|----------|
| | RPM | Pa | CMH | in.Wg | 1 | 2 | 3 | 4 | 5 | 6 | 7 | 8 | LWA | LpA(dBA) |
| 1 | 1450 | 0 | 13708 | 0.002 | 89 | 90 | 94 | 91 | 89 | 88 | 81 | 73 | 94 | 82 |
| | | 651 | 9656 | 2.616 | 92 | 90 | 89 | 86 | 83 | 81 | 75 | 67 | 89 | 77 |
| | | 1062 | 5391 | 4.268 | 96 | 93 | 90 | 86 | 82 | 79 | 74 | 68 | 89 | 77 |
| | | 1065 | 0 | 4.277 | 96 | 93 | 90 | 86 | 82 | 79 | 74 | 68 | 89 | 77 |
| 2 | 1680 | 1 | 15882 | 0.002 | 93 | 93 | 97 | 95 | 93 | 92 | 86 | 78 | 98 | 86 |
| | | 874 | 11187 | 3.511 | 96 | 94 | 92 | 90 | 87 | 84 | 79 | 72 | 92 | 80 |
| | | 1426 | 6246 | 5.730 | 99 | 97 | 94 | 91 | 86 | 83 | 79 | 73 | 93 | 81 |
| | | 1429 | 0 | 5.741 | 99 | 97 | 94 | 91 | 86 | 83 | 79 | 73 | 93 | 81 |
| 3 | 1910 | 1 | 18057 | 0.003 | 96 | 96 | 100 | 99 | 96 | 95 | 91 | 82 | 102 | 90 |
| | | 1130 | 12719 | 4.539 | 99 | 97 | 95 | 93 | 90 | 88 | 84 | 76 | 96 | 84 |
| | | 1844 | 7101 | 7.406 | 102 | 101 | 97 | 95 | 89 | 87 | 83 | 77 | 96 | 84 |
| | | 1847 | 0 | 7.421 | 102 | 101 | 97 | 95 | 89 | 87 | 83 | 77 | 96 | 84 |
| 4 | 2140 | 1 | 20231 | 0.004 | 98 | 98 | 99 | 102 | 98 | 98 | 95 | 86 | 104 | 92 |
| | | 1418 | 14251 | 5.697 | 102 | 100 | 98 | 97 | 93 | 91 | 87 | 80 | 99 | 87 |
| | | 2314 | 7956 | 9.297 | 104 | 104 | 99 | 99 | 92 | 90 | 86 | 80 | 99 | 87 |
| | | 2319 | 0 | 9.316 | 104 | 104 | 99 | 99 | 92 | 90 | 86 | 80 | 99 | 87 |
| 5 | 2370 | 1 | 22406 | 0.005 | 100 | 100 | 101 | 104 | 101 | 100 | 98 | 89 | 107 | 95 |
| | | 1739 | 15782 | 6.988 | 104 | 103 | 100 | 99 | 95 | 93 | 90 | 83 | 101 | 89 |
| | | 2838 | 8812 | 11.403 | 106 | 107 | 102 | 101 | 95 | 92 | 89 | 83 | 102 | 90 |
| | | 2844 | 0 | 11.426 | 106 | 107 | 102 | 101 | 95 | 92 | 89 | 83 | 102 | 90 |
| 6 | 2595 | 1 | 24533 | 0.005 | 102 | 102 | 103 | 106 | 103 | 102 | 100 | 93 | 109 | 97 |
| | | 2085 | 17281 | 8.378 | 106 | 105 | 102 | 101 | 98 | 96 | 93 | 86 | 104 | 92 |
| | | 3403 | 9648 | 13.671 | 108 | 108 | 104 | 103 | 97 | 95 | 91 | 86 | 104 | 92 |
| | | 3410 | 0 | 13.698 | 108 | 109 | 105 | 103 | 97 | 95 | 91 | 86 | 104 | 92 |
| 7 | 2750 | 2 | 25998 | 0.006 | 104 | 103 | 104 | 108 | 105 | 103 | 102 | 95 | 110 | 98 |
| | | 2342 | 18313 | 9.408 | 107 | 106 | 104 | 103 | 100 | 97 | 94 | 88 | 105 | 93 |
| | | 3822 | 10224 | 15.353 | 110 | 110 | 106 | 104 | 99 | 96 | 93 | 88 | 106 | 94 |
| | | 3829 | 0 | 15.383 | 110 | 110 | 106 | 104 | 99 | 96 | 93 | 88 | 106 | 94 |
| 8 | 2900 | 2 | 27416 | 0.007 | 105 | 104 | 105 | 109 | 106 | 104 | 103 | 97 | 112 | 100 |
| | | 2604 | 19312 | 10.463 | 108 | 107 | 105 | 104 | 101 | 98 | 96 | 90 | 106 | 94 |
| | | 4250 | 10782 | 17.073 | 111 | 111 | 108 | 105 | 101 | 97 | 94 | 89 | 107 | 95 |
| | | 4258 | 0 | 17.107 | 111 | 111 | 108 | 106 | 101 | 97 | 94 | 89 | 107 | 95 |

Performance certified is for installation type B – free inlet, ducted outlet. Power rating (kW) does not include transmission losses. Performance ratings do not include the effects of appurtenances (accessories). Values shown are for inlet LwI and LwIA sound power levels for installation type B: free inlet, ducted outlet. The sound power level ratings shown are in decibels, referred to 10-12 watts, calculated per AMCA International Standard 301. The A-weighted sound ratings shown have been calculated per AMCA International Standard 301. Sound pressure level LpA (dBA) are not licensed by AMCA International.



Walker Company

中国 上海

更多详情请登录网站

www.walker-fan.com

