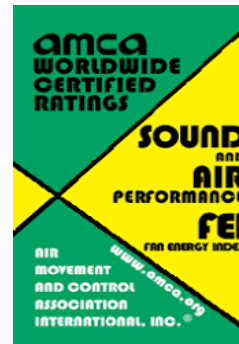


INFINAIR FANS

IS IT RELIABLE? OF COURSE! WE ARE
INFINAIR FANS, ARE YOU?

YFIAM

High Efficient Inline Vane Axial Fan
Impeller Type M



INFINAIR ARABIA COMPANY LTD. certifies the High Efficient Inline Vane Axial Fan (YFIAM) shown herein is licensed to bear the AMCA seal. The ratings shown are based on tests and procedures performed in accordance with AMCA Publication 211 and AMCA Publication 311 and comply with the requirements of the AMCA certified rating program. The AMCA certified ratings seal applies to the FEI for all models of YFIAM



High Pressure Axial Fans (Airfoil)
Sizes 315 mm - 1400 mm

Management Messages

INFINAIR ARABIA would like to express their thanks to all of you that you have selected INFINAIR products. INFINAIR products have been exported to many countries all over the world. INFINAIR is always looking to satisfy the customers in all levels by providing high quality fans. The fans engineering designs include a lot of solutions that maintain high performance, less power consumption, low noise and high efficiency rate. INFINAIR is very interested in Quality Management ISO 9001 and Health and Safety Management ISO 14001 and ISO 45001. We believe that management is the base to develop our products. INFINAIR has qualified engineers and designers to support customers before and after the orders. We have many training programs for the customers & consultants that enable them to get valuable information about Fans Engineering. INFINAIR has many departments to support their customers: Sales, Application, Engineering, Production, Quality and Service to make sure the products specifications are followed as per customers needs.



Certifications and Accreditation

INFINAIR ARABIA COMPANY LTD has considered the certifications and accreditation at first priority to make sure that customer will buy a safe product, high quality air performance and finishing. INFINAIR has done many steps toward success for help all kind of customers in Middle East and North Africa (MENA). All INFINAIR products are under warranty for 18 months of delivery date. If customer would join Warranty extended program for 2 years or 5 years that is also possible.

intertek
Total Quality Assured.

AUTHORIZATION TO MARK

This authorizes the application of the Certification Mark(s) shown below to the models described in the Product(s) Covered section when made in accordance with the conditions set forth in the Certification Agreement and Listing Report. This authorization also applies to multiple listed model(s) identified on the correction page of the Listing Report.

This document is the property of Intertek Testing Services and is not transferable. The certification mark(s) may be applied only at the location of the Party Authorized To Apply Mark.

Applicant: Infinair Arabia Company Limited Address: Mawqar Free Zone, Amman Country: Jordan Contact: Hossem Abu Shaeib Phone: +962775532880 FAX: NA Email: kham@infinair-arabia.com hossam@infinair-arabia.com	Manufacturer: Infinair Arabia Company Limited Address: Mawqar Free Zone, Amman Country: Jordan Contact: Nabil Saleem Phone: +962777967864 FAX: NA Email: kham@infinair-arabia.com nabil@infinair-arabia.com
--	---

Party Authorized To Apply Mark: Same as Manufacturer
Report Issuing Office: Dallas, TX
Control Number: 5015047
Authorized by: *[Signature]*
for Dean Davidson, Certification Manager

Intertek
UL

This document supersedes all previous Authorizations to Mark for the noted Report Number.

This Authorization to Mark is the exclusive use of Intertek. It is a privilege granted to the Client by Intertek and is not a license. The Client is responsible for ensuring that the product(s) covered by this Authorization to Mark are made in accordance with the conditions set forth in the Certification Agreement and Listing Report. The Client is also responsible for ensuring that the product(s) covered by this Authorization to Mark are made in accordance with the conditions set forth in the Certification Agreement and Listing Report. The Client is also responsible for ensuring that the product(s) covered by this Authorization to Mark are made in accordance with the conditions set forth in the Certification Agreement and Listing Report.

Intertek Testing Services NA Inc.
545 East Algonquin Road, Arlington Heights, IL 60005
Telephone 800-345-3551 or 847-439-8607 Fax 312-283-1872

Standard(s): Power Ventilators [UL 705:2017 Ed.7 +R080x2018]
Product: Roof-Mounted Electric Fans
Brand Name: Infinair
Models: ISQ-200, ISQ-300, ISQ-425, ISQ-500, ISQ-575, ISQ-675, ISQ-750, ISQ-800, ISQ-1000, RYC-200, RYC-225, RYC-250, RYC-300, RYC-425, RYC-500, RYC-575, RYC-675, RYC-750, RYC-800, RYC-1000, CUS-200, CUS-300, CUS-425, CUS-500, CUS-575, CUS-675, CUS-750, CUS-800, CUS-1000, RUC-200, RUC-225, RUC-250, RUC-300, RUC-425, RUC-500, RUC-575, RUC-675, RUC-750, RUC-800, RUC-1000

UL listed Certificate

Air Movement & Control Association International, Inc.
The International Authority on Air System Components Since 1917

amca
INTERNATIONAL

MEMBER

INFINAIR ARABIA COMPANY LTD.

September 2019
Member Since

[Signature]
Executive Director

AMCA Membership

SGS

Certificate JO190462

The management system of
INFINAIR ARABIA COMPANY LTD.,
Mawqar Free Zone - Industrial Area - Amman - Jordan

has been assessed and certified as meeting the requirements of
ISO 45001:2018

For the following activities
Design, Manufacturing, Sales and Servicing of Commercial and Industrial Fans.

This certificate is valid from 03 September 2019 until 03 September 2022 and remains valid subject to satisfactory surveillance audits. Recertification audit due a minimum of 60 days before the expiration date. Issue 1. Certified since September 2019.

Authorized by
[Signature]

UKAS
MANAGEMENT SYSTEMS
0005

Page 1 of 1

ISO 14001:2015

SGS

Certificate JO190461

The management system of
INFINAIR ARABIA COMPANY LTD.,
Mawqar Free Zone - Industrial Area - Amman - Jordan

has been assessed and certified as meeting the requirements of
ISO 14001:2015

For the following activities
Design, Manufacturing, Sales and Servicing of Commercial and Industrial Fans.

This certificate is valid from 03 September 2019 until 03 September 2022 and remains valid subject to satisfactory surveillance audits. Recertification audit due a minimum of 60 days before the expiration date. Issue 1. Certified since September 2019.

Authorized by
[Signature]

UKAS
MANAGEMENT SYSTEMS
0005

Page 1 of 1

ISO 45001:2018

SGS

Certificate JO190463

The management system of
INFINAIR ARABIA COMPANY LTD.,
Mawqar Free Zone - Industrial Area - Amman - Jordan

has been assessed and certified as meeting the requirements of
ISO 9001:2015

For the following activities
Design, Manufacturing, Sales and Servicing of Commercial and Industrial Fans.

This certificate is valid from 03 September 2019 until 03 September 2022 and remains valid subject to satisfactory surveillance audits. Recertification audit due a minimum of 60 days before the expiration date. Issue 1. Certified since September 2019.

Authorized by
[Signature]

UKAS
MANAGEMENT SYSTEMS
0005

Page 1 of 1

ISO 9001:2015

>> Company Info

INFINAIR ARABIA COMPANY LTD is the first company in Kingdom of Jordan for producing ventilation industries specialized in fans production for HVAC objectives and Industrial purposes. It has been founded by the worldwide INFINAIR CORP that has been established in 2003. INFINAIR is a high technology brand. INFINAIR ARABIA is targeting to keep providing very high technology product, new solutions to the market, high energy saving fans, fast delivery to MENA, customer care, service after sales, new innovation ideas help customers to pay less cost with best solutions

Factory Address: Kingdom of Jordan, Amman, Mowaaqqar Free Zone

Sales & Service Office:

INFINAIR ARABIA CO. LTD Sales offices are covering GCC and Africa:

- Jordan Sales Head Office and Technical Support - Amman
- Saudi Arabia, United Arab Emirate, Bahrain, Oman, Qatar and Iraq

Company Vision:

To be the most trusted brand in ventilation industry in the World

Company Mission:

To Provide reliable, convenient air movement controls, operations and services.

Awards and Achievements:

High-tech Enterprise

Renowned trademark:

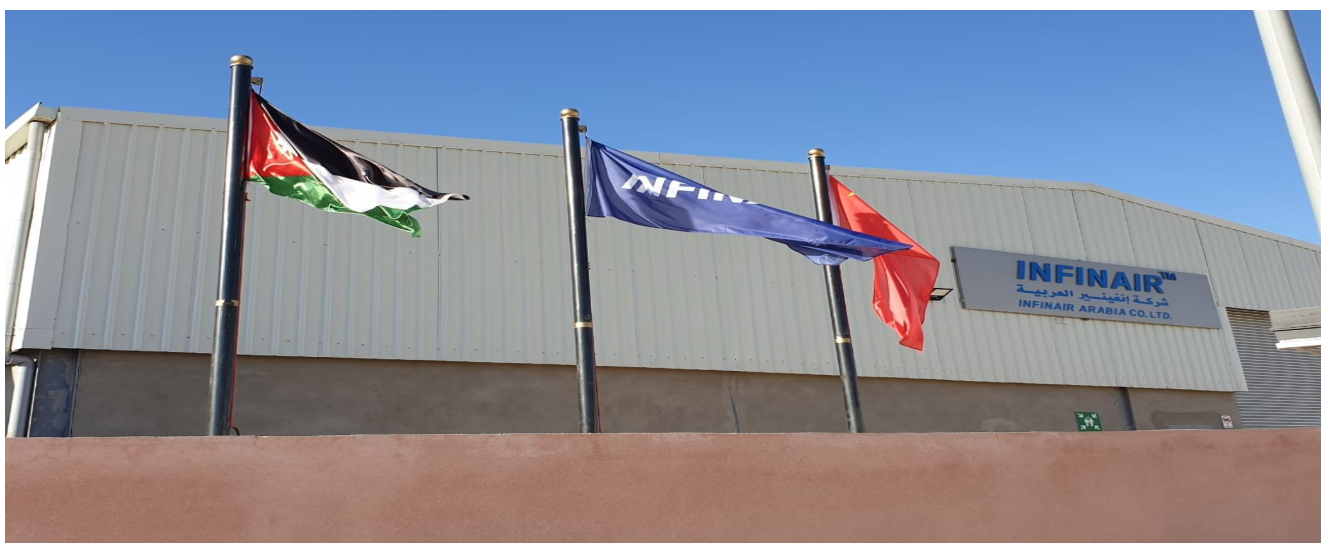
INFINAIR™

Shanghai Famous Brand Product : INFINAIR FAN

SGS ISO 9001, ISO 14001 and ISO 45001 Management Certificates

Technological Strength of INFINAIR Brand:

Control Association (AMCA) accredited laboratory in our Head Quarter in PRC. Most of the INFINAIR products are tested and certified by many international certification bodies. The Strength of INFINAIR ARABIA comes from a strong JV with INFINAIR CORPORATION



INFINAIR Intelligent Ventilation Technology

- **Smart Needs Identification:**
It can dynamically adjust the operation target to the changing load and environment.
- **Intelligent Adjustment :**
The use of inverter or EC smart control technology can make the fans achieve best results under the control of the intelligent speed regulation system.
- **Intelligent Real-time Information:**
Individual workstations are linked to the central control system through internet or local area network
- **Intelligent Detection system:**
Reliable sensors can detect early symptoms and notify the user, ensuring stable operation.

INFINAIR Bionic Technology

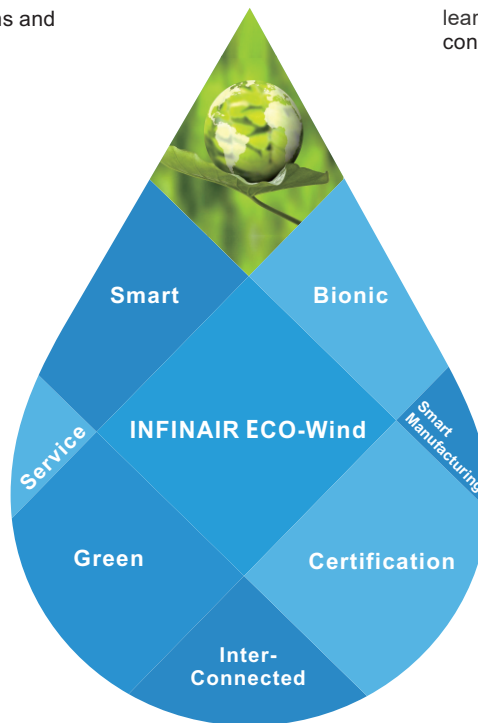
- **INFINAIR's Bionic Energy Conservation**
We develop energy saving products by observing behaviors from the animal kingdom. How can birds fly thousands of miles with extremely low energy consumption?
- **INFINAIR Bionic Sound Reduction**
Why Owls can fly so silently? Even mice are not being able to detect their approach?
- The research and development of INFINAIR products are heavily inspired by the animal evolution over the past millenniums. We have learn how energy and sound are being able to conserve from their amazing changes .

INFINAIR's After-sales Service

- **Joint Research & Development**
The Joint R&D can provide customer the necessary support and guidance during the initial research progress
- **Customization**
Our products are fully customization. We are able to satisfy customer requirements on an individual basis
- **Adequate After-sales Service**

INFINAIR's Intelligent Fabrication

- Intelligent fabrication process
- Power test, dynamic balancing test and communication test performed on the production line
- Robotic welding technology
- Lean production
- 6Σ Systems



Green Smart Technology

- **CFD Simulation & Analysis**
A computer-aided air movement simulation model which can calculate the efficiency of the fan based on the number of blades, blade angle, width, and sound level.
- **Finite Element Analysis Technology**
To analyze and provide accurate prediction of how material is likely to respond when subjected to structural and/or thermal loads.

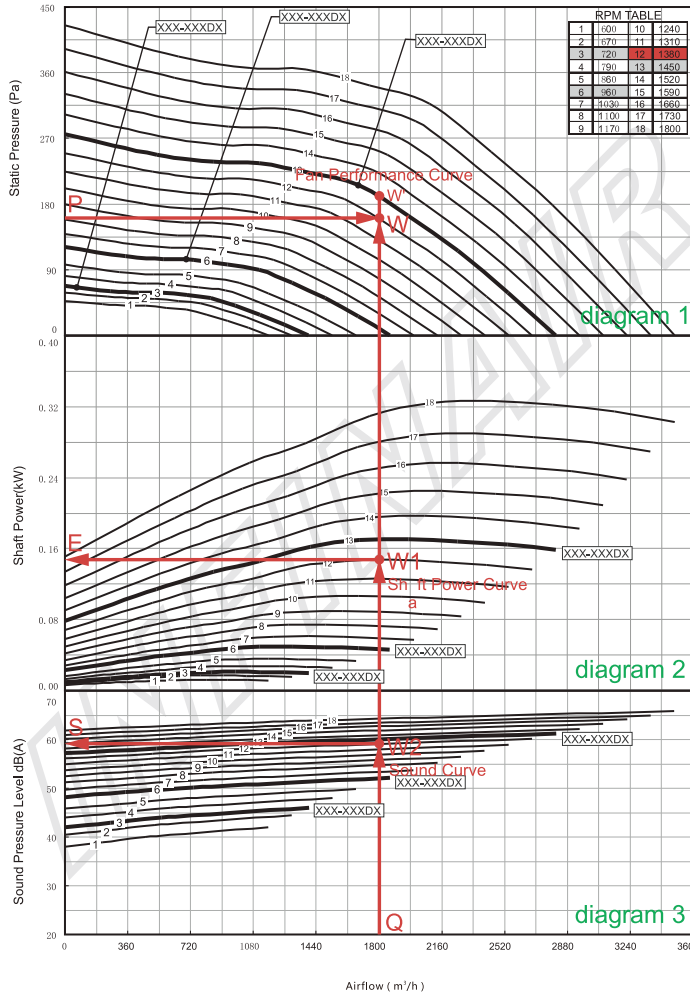
Connectivity

- Matrix Connection
- Central Connection
- Terminal Connection

Certifications and Tests

- **Most of the products are certified by:**
SMOKE, ATEX, AMCA
- **Performance and Reliability Tests:**
Airflow, Air Pressure, Power, Sound Level, Temperature Durability, Salt Spray and Water Proof Test, etc

Performance Curves - Technical



Example:

Airflow: 1,800m³/h, Static pressure: 160 Pa

Step One: A vertical line is drawn from the given airflow (Point Q: 1,800m³/h) and a horizontal line from the given static pressure (Point P: 160 Pa). The intersection point (Point W) is the operating point. Then find a performance curve closest to Point W (in this case, it is Static Pressure Curve 12 at RPM 1,380 as shown).

Step Two: From the intersection point (Point W1) between the vertical line and Shaft Power Curve is drawn a horizontal line. Its intersection point with the Shaft Power axis (Point E: about 0.15 kW) represents the actual power consumption. So a 0.25 kW motor shall be used.

Step Three: From the intersection point (Point W2) between the vertical line and Sound Curve is drawn a horizontal line in Diagram 3. Its intersection point with the Sound Pressure Level axis (Point S: about 59 dB (A)) represents the sound level for the operating point of W.

Step Four: From the above steps, the model of the fan is identified as RTC-300-0.25 of belt drive type at 1,380 RPM. If fans of lower power or lower sound are preferred, please refer to larger fans for further comparison. It should be noted that the primary investments for larger fans would increase.

Step Five: If a fan of 1,800 m³/h at 180 Pa static pressure is needed, it is easy to know that Point W' is very close to Curve 13 in boldface (representing the fan of direct drive type at 1,450 RPM and 4-pole motor). The arrow leads to model RTC -300D4 equipped with a 0.25 kW motor, which has low price performance ratio.

Fan Law 1

Airflow delivered by a fan varies in direct proportion to the change in its rotational speed

$$CFM_2 = \frac{RPM_2}{RPM_1} \times CFM_1$$

Fan Law 2

Static Pressure developed by a fan varies with the square of the change in its rotational speed

$$SP_2 = \left(\frac{RPM_2}{RPM_1} \right)^2 \times SP_1$$

Fan Law 3

Power required by a fan varies with the cube of the change in its rotational speed

$$BHP_2 = \left(\frac{RPM_2}{RPM_1} \right)^3 \times BHP_1$$

Unit Conversions

AREA		
MULTIPLY	BY	TO OBTAIN
in ²	0.006944	ft ²
	0.0006452	m ²
	645.16	mm ²
ft ²	144	in ²
	0.09290	m ²
	92903	mm ²
m ²	10.76	ft ²
	1550	in ²
	10 ⁶	mm ²
DENSITY		
MULTIPLY	BY	TO OBTAIN
lb/ft ³	16.02	kg/m ³
kg/m ³	0.06243	lb/ft ³
LENGTH		
MULTIPLY	BY	TO OBTAIN
ft	12	in
	0.3048	m
	304.80	mm
in	0.0833	ft
	0.02540	m
m	25.4	mm
	3.2808	ft
	39.37	in
mm	1000	mm
	0.003281	ft
	0.03937	in
	0.001	m
MASS		
MULTIPLY	BY	TO OBTAIN
lb _m	16	oz
	453.59	grams
	0.45359	kg
oz	0.0625	lb _m
	28.35	grams
	0.0283	kg
grams	0.002205	lb _m
	0.03527	oz
	0.001	kg
kg	2.2046	lb _m
	35.274	oz
	1000	grams
MOMENT OF INERTIA		
MULTIPLY	BY	TO OBTAIN
lb-in ²	0.0069	lb-ft ²
	0.0002926	kg-m ²
lb-ft ²	144	lb-in ²
	0.04214	kg-m ²
kg-m ²	23.73	lb-ft ²
	3417.2	lb-in ²
POWER		
MULTIPLY	BY	TO OBTAIN
HP	33000	ft-lb/min
	550	ft-lb/s
	745.7	W
	0.7457	kW
	76.04	kg-m/sec
ft-lb/min	0.0000303	HP
	0.0167	ft-lb/s
	0.0226	W
	0.0023	kg-m/sec
ft-lb/s	0.0018	HP
	60	ft-lb/min
	1.3558	W
	0.1388	kg-m/sec
W	0.00134	HP
	44.254	ft-lb/min
	0.73756	ft-lb/s
	0.1019	kg-m/sec
kg-m/sec	0.01	hp
	434.78	ft-lb/min
	7.20	ft-lb/s
	9.81	W

PRESSURE		
MULTIPLY	BY	TO OBTAIN
psi	27.728	in-wg
	2.036	in-Hg
	6894.8	Pa
	704.28	mm-wg
	51.715	mm-Hg
in-wg	0.06805	atm
	0.03607	psi
	0.07343	in-Hg
	248.66	Pa
	25.4	mm-wg
in-Hg	1.8651	mm-Hg
	0.002454	atm
	0.49115	psi
	13.619	in-wg
	3386.4	pa
Pa	345.91	mm-wg
	25.4	mm-Hg
	0.03342	atm
	0.000145	psi
	0.004022	in-wg
mm-wg	0.0002953	in-Hg
	0.10215	mm-wg
	0.007501	mm-Hg
	0.0000099	atm
	0.00142	psi
mm-Hg	0.03937	in-wg
	0.002891	in-Hg
	9.7898	Pa
	0.07343	mm-Hg
	0.0000966	atm
atm	0.01934	psi
	0.53616	in-wg
	0.03937	in-Hg
	133.32	Pa
	13.619	mm-wg
	0.001316	atm
	14.696	psi
	407.48	in-wg
	29.921	in/Hg
	101300	Pa
	10350	mm-wg
	760	mm-Hg
ROTATING SPEED		
MULTIPLY	BY	TO OBTAIN
RPM	0.0167	rps
	0.0167	Hertz
RPS	60	rpm
	1	Hertz
Hertz	60	rpm
	1	rps
TORQUE		
MULTIPLY	BY	TO OBTAIN
lb-in	0.083	lb-ft
	0.11298	N-m
lb-ft	12	lb-in
	1.3558	N-m
N-m	0.73756	lb-ft
	8.8507	lb-in
TEMPERATURE		
°F = 9/5 C + 32		
°C = 5/9 (F - 32)		

INFINAIR™

VELOCITY		
MULTIPLY	BY	TO OBTAIN
fpm	0.0167	fps
	.2	in/sec
	0.005080	m/s
	0.30480	m/min
fps	60	fpm
	12	in/sec
	0.30480	m/s
	18.288	m/min
in/sec	5	fpm
	0.0833	fps
	0.02540	m/s
	1.524	m/min
m/s	196.85	fpm
	3.2808	fps
	39.37	in/sec
	60	m/min
m/min	3.2808	fpm
	0.05468	fps
	0.65617	in/sec
	0.0167	m/s
VOLUME		
MULTIPLY	BY	TO OBTAIN
ft ³	1728	in ³
	28.317	l
	0.02832	m ³
in ³	0.000579	ft ³
	0.01639	l
	0.0000164	m ³
l	0.03531	ft ³
	61.024	in ³
	0.001	m ³
m ³	35.315	ft ³
	61024	in ³
	1000	l
VOLUME FLOW		
MULTIPLY	BY	TO OBTAIN
CFM	0.0004719	m ³ /sec
	0.02832	m ³ /min
	1.6990	m ³ /hr
	0.47195	l/s
	28.317	l/min
m ³ /sec	2118.9	CFM
	60	m ³ /min
	3600	m ³ /hr
	1000	l/s
	60000	l/min
m ³ /min	35.315	CFM
	0.0167	m ³ /sec
	60	m ³ /hr
	16.667	l/s
	1000	l/min
m ³ /hr	0.58858	CFM
	0.0167	m ³ /min
	0.0003	m ³ /sec
	0.2778	l/s
	16.667	l/min
l/s	2.1189	CFM
	0.001	m ³ /sec
	0.06	m ³ /min
	3.6	m ³ /hr
	60	l/min
l/min	0.03531	CFM
	0.000016	m ³ /sec
	0.001	m ³ /min
	0.06	m ³ /hr
	0.0167	l/s

Electrical Motors

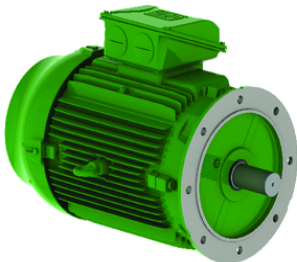
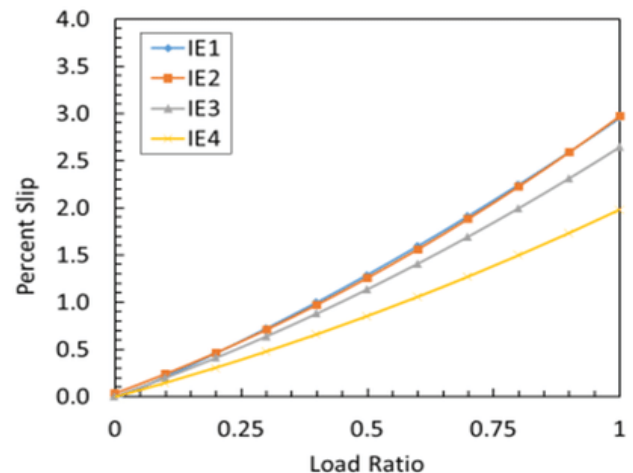
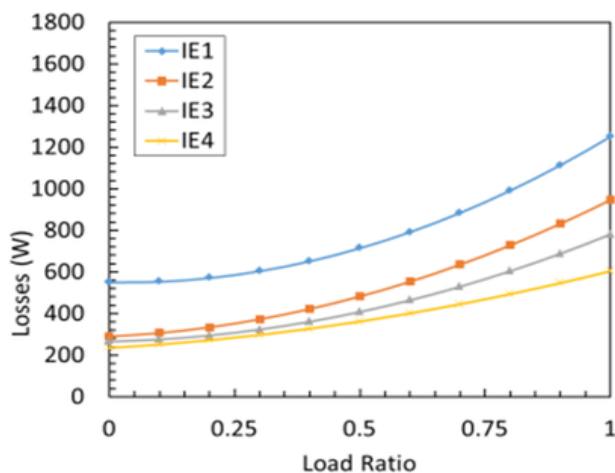
INFINAIR ARABIA fuse High Efficiency motors for all fans. TEFC motor's materials are made from Cast Iron, stainless steel shaft and high quality winding to overcome. The increasing demand for electrical energy to sustain global development requires consistent heavy investments in power supply generation. The best strategy to maintain energy supply in the short term is to avoid wastage and increase energy efficiency. Electric motors play a major role in this strategy, since around 40% of global energy demand is estimated to be related to electric motor applications. Consequently, any initiatives to increase energy efficiency, by using high efficiency electric motors and frequency inverters, are to be welcomed, as they can make a real contribution to reductions in global energy demand

Motors Features:

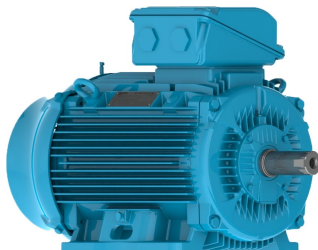
- High Ambient withstanding 55 degree C
- Premium Efficiency Rating IE3 is a standard
- Super Premium Efficiency Rating IE4 (Option)
- Cast Iron Body and well designed Terminal Box
- Insulation Class is F and Protection is IP55
- Applicable for VFD operation
- Thermal protection integration
- Smoke applications 300 C/ 400 C for 120 min (Option)
- Explosion Proof Motors (Options)
- NEMA 4X application for corrosion protection (Option)



IE3/4 Premium Motors compared with IE2/1



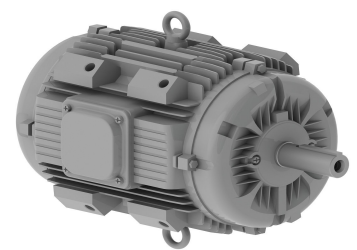
Flange



Flat



Explosion Proof



Smoke Application

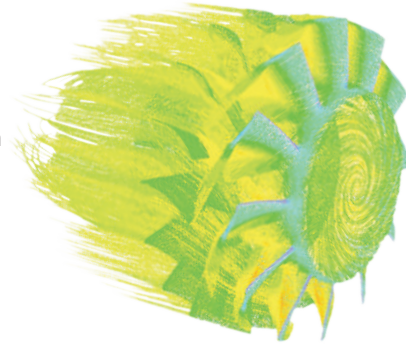
Note:

Please consult the sales office or the agent nearby your area and ask for motor details. For R&D purposes and logistics, the motors brands, color and specifications are subject to change without prior notice.

>> Medium and High Pressure Axial Impellers with VANE-SOAR Series Airfoil Blades

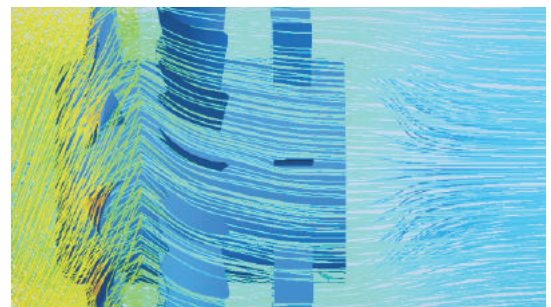
High-efficiency Air Performance

- Airfoil blades of optimum air performance
- Vortex hub
- Optimized design through CFD simulation and experimental verification
- Advanced process used to reduce clearance between the impeller and the cylindrical fan body
- High efficiency and lower operation costs



High Balance Quality Grade

- The balance quality grade as high as G2.5 (Just G6.3 for general products)
- Vibration reduced and reliability improved
- Sound greatly lowered



Unique Hub-to-tip Ratio

- Hub-to-tip ratio as high as 0.56
- High pressure rise rates to improve airflow movement
- Reduced airflow loss caused by insufficient pressure
- Particularly suitable for long distance airflow delivery in ducts

Reliable Structural Design

- Advanced casting process to ensure accuracy and consistency
- Optimized CAE aided design through repeated tests
- High-strength and more reliable vortex hub
- Innovative hub connection that makes operation safer



Variable Angles Available

- 14 impeller sizes in total ranging from 315 to 1400mm
- 8 blade angles in total from 0 to 35 degrees
- 4 speeds in total determined by four poles of 2/4/6/8
- Optimized model selection to help reduce upfront investment and operation costs

>> Product Features

High Efficiency and Dramatically Reduced Operation Costs

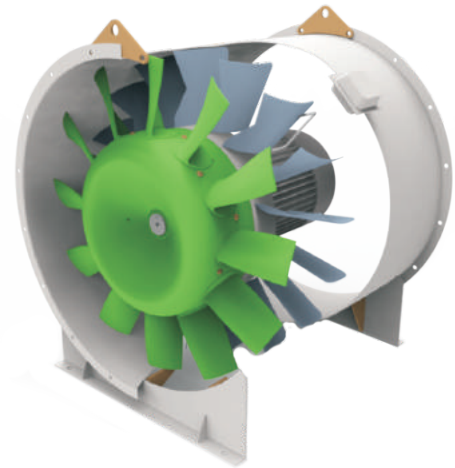
- Airfoil blades of optimum air performance
- Vortex hub that smooths the flow of air and reduces turbulence
- Advanced process used to reduce clearance between the impeller and the cylindrical fan body for greater efficiency
- Guide vanes mounted behind the impeller

Applications

- General air supply and exhaust
- Explosion proof air supply and exhaust
- Positive pressure air supply, smoke removal
- Two-speed air supply and exhaust

Great Reliability and Long Service Life Ready for Continuous Operation

- Optimized design through the FEA method and experimental verification
- Casting process used for core components and high strength achieved
- Die formed for better accuracy and consistency
- Higher balance quality grade and more reliable operation



Direct Driven, Highly Efficient and Maintenance-free

- Airflow delivery of higher efficiency
- No quick wear parts and low maintenance
- Easier and more effective maintenance
- Sealed and lubrication-free motor bearing for longer service life
- Compact design that saves space

INFI-KOAT Modular Film™ Coating, Unfading Over Time

- Pickling, Parkerizing and alkaline wash combined to ensure a clean surface
- Powder adherence through electrostatic attraction to ensure a uniform coating
- Processed in the high temperature furnace for strong adhesion
- Resistant to ultraviolet radiation, moisture and marine climate
- Resistant to uniform corrosion over large areas and localized pitting corrosion

Optional Accessories

• Flexible Connectors and Companion Flanges

Flexible connectors and companion flanges are to be fitted at both the inlet and outlet for easy onsite installation.

• Volume Control Damper

The volume control damper, made of square galvanized steel, has electrical and manual actuators available.

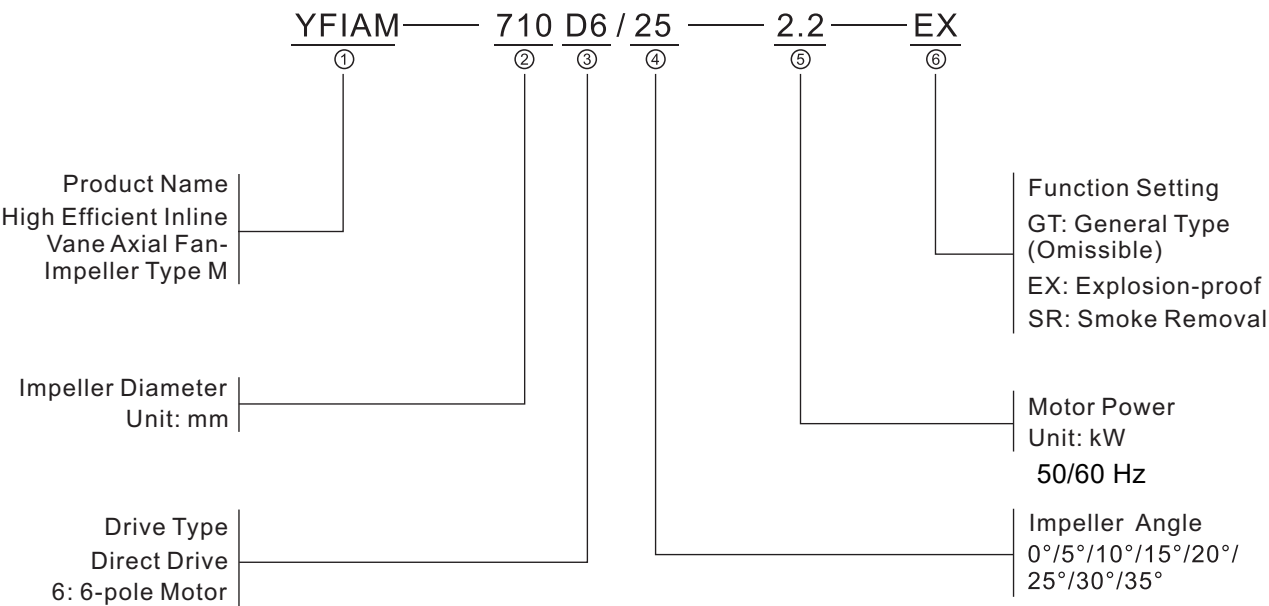
• Vibration Isolators

Vibration isolators can be ceiling hung or floor-mounted. Neoprene or spring isolators are available.

• Silencer

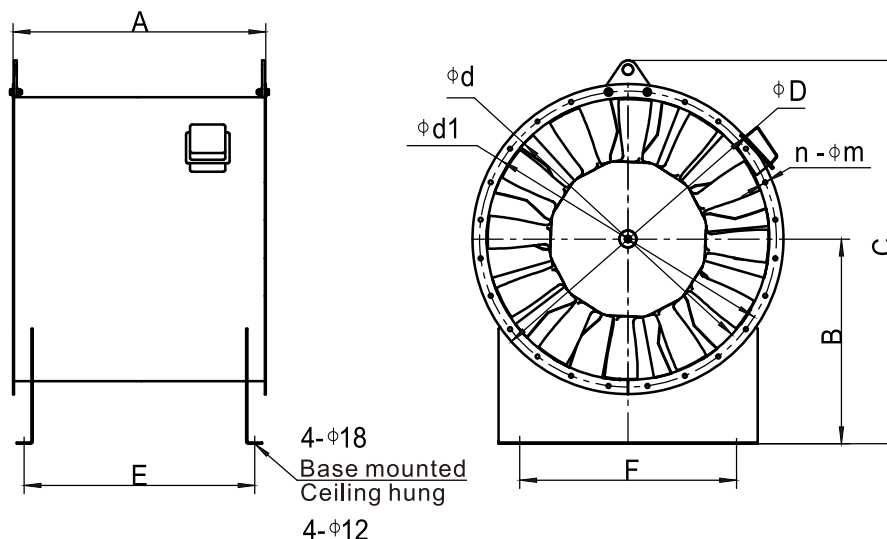
Silencers are made of galvanized steel and can be mounted at both the inlet and outlet. They can help dramatically reduce sound and improve efficiency.

Naming Convention



Dimensions and Weight

Model : YFIAM315-1400



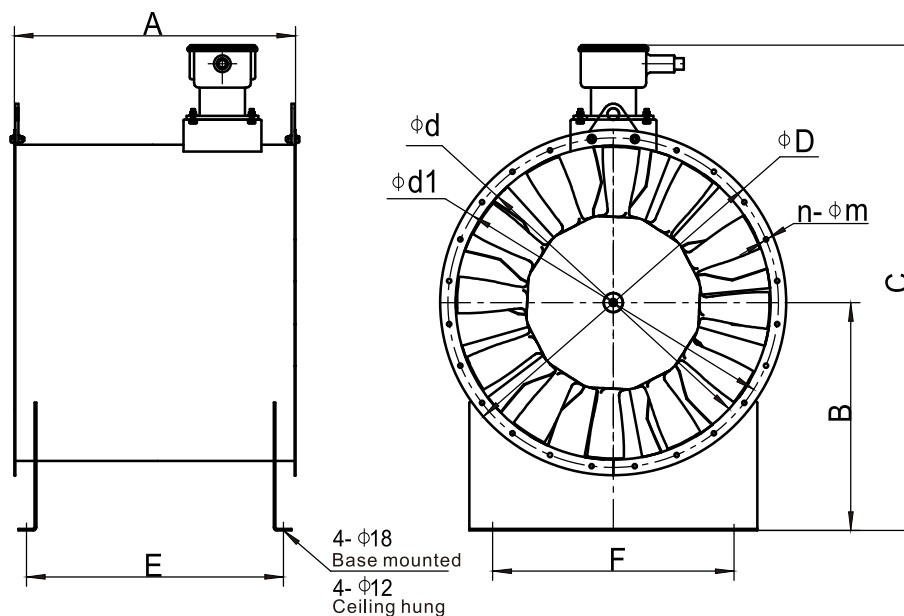
Model	Frame Size	A	B	C	ϕD	$\phi d1$	ϕd	E	F	$n - \phi m$	Weight (kg)
YFIAM-315-GT/SR	-	320	210	405	390	356	320	278	220	8- $\phi 10$	11
YFIAM-355-GT/SR	-	350	240	455	430	396	360	301	240	8- $\phi 10$	14
YFIAM-400-GT/SR	-	420	270	515	485	449	405	371	280	8- $\phi 12$	18
YFIAM-450-GT/SR	-	450	310	580	535	499	455	401	325	8- $\phi 12$	22
YFIAM-500-GT/SR	-	500	340	635	585	549	505	441	350	8- $\phi 12$	32
YFIAM-560-GT/SR	-	500	370	695	645	609	565	441	400	8- $\phi 12$	40
YFIAM-630-GT/SR	71~90	480	400	820	716	679	636	421	470	12- $\phi 12$	45
	100~132	580						521			49
YFIAM-710-GT/SR	80~112	550	445	910	796	759	716	491	520	12- $\phi 12$	62
	132~160	720						661			69
YFIAM-800-GT/SR	90~132	670	500	1015	887	849	807	608	600	12- $\phi 12$	84
	160~180	830						768			91
YFIAM-900-GT/SR	100~132	700	550	1115	988	954	908	638	680	16- $\phi 14$	104
	160~225	940						878			118
YFIAM-1000-GT/SR	100~132	720	600	1215	1089	1054	1009	658	730	16- $\phi 14$	126
	160~225	1000						938			142
YFIAM-1120-GT/SR	132~180	960	680	1360	1230	1182	1130	895	790	16- $\phi 14$	194
	200~280	1220						1155			217
YFIAM-1250-GT/SR	160~225	1070	745	1490	1361	1312	1261	1005	900	20- $\phi 14$	248
	250~280	1250						1185			259
YFIAM-1400-GT/SR	160~225	1100	820	1645	1512	1462	1412	1035	1030	20- $\phi 14$	308
	250~280	1290						1225			322

Note:

1. All the dimensional data are for reference only, subject to the final drawing.
2. Motor is not included in the weight data above. Please refer power and weight of motor to the attached list.
3. Motor frame sizes are subject to change according to motor brand and design, please consult the nearest seller to you to confirm all details
4. Final unit details with design and specifications are subject to final approved documents by customer, catalogue isn't a reference

Dimensions and Weight

Model : YFIAM315-1400



Model	Frame Size	A	B	C	ϕD	$\phi d1$	ϕd	E	F	$n-\phi m$	Weight (kg)
YFIAM-315-EX	-	320	210	405	390	356	320	278	220	8- $\phi 10$	11
YFIAM-355-EX	-	350	240	455	430	396	360	301	240	8- $\phi 10$	14
YFIAM-400-EX	-	420	270	515	485	449	405	371	280	8- $\phi 12$	18
YFIAM-450-EX	-	450	310	580	535	499	455	401	325	8- $\phi 12$	22
YFIAM-500-EX	-	500	340	830	585	549	505	441	350	8- $\phi 12$	32
YFIAM-560-EX	-	500	370	905	645	609	565	441	400	8- $\phi 12$	40
YFIAM-630-EX	80~90	480	400	970	716	679	636	421	470	12- $\phi 12$	45
	100~132	580						521			49
YFIAM-710-EX	80~112	550	445	1070	796	759	716	491	520	12- $\phi 12$	62
	132~160	720						661			69
YFIAM-800-EX	90~132	670	500	1175	887	849	807	608	600	12- $\phi 12$	84
	160~180	830						768			91
YFIAM-900-EX	100~132	700	550	1305	988	954	908	638	680	16- $\phi 14$	104
	160~225	940						878			118
YFIAM-1000-EX	100~132	720	600	1405	1089	1054	1009	658	730	16- $\phi 14$	126
	160~225	1000						938			142
YFIAM-1120-EX	132~180	960	680	1580	1230	1182	1130	895	790	16- $\phi 14$	194
	200~280	1220						1155			217
YFIAM-1250-EX	160~225	1070	745	1710	1361	1312	1261	1005	900	20- $\phi 14$	248
	250~280	1250						1185			259
YFIAM-1400-EX	160~225	1100	820	1865	1512	1462	1412	1035	1030	20- $\phi 14$	308
	250~280	1290						1225			322

Note:

1. All the dimensional data are for reference only, subject to the final drawing.
2. Motor is not included in the weight data above. Please refer power and weight of motor to the attached list.
3. Motor frame sizes are subject to change according to motor brand and design, please consult the nearest seller to you to confirm all details
4. Final unit details, design and specifications are subjected to change from Catalogue, the reference is the documents approved by customer

Reference Weight and Power of Motor 50/60 Hz

Power (kW)	2P		4P		6P		8P	
	Frame Size	Weight(kg)	Frame Size	Weight(kg)	Frame Size	Weight(kg)	Frame Size	Weight(kg)
0.18					711-6	14	801-8	16
0.25			711-4	14	712-6	14.5	802-8	17
0.37	711-2	15	712-4	14.5	801-6	16	90S-8	24
0.55	712-2	16	801-4	15	802-6	17	90L-8	28
0.75	801-2	17	802-4	18	90S-6	23	100L1-8	33
1.1	802-2	19	90S-4	22	90L-6	25	100L2-8	38
1.5	90S-2	21	90L-4	27	100L-6	33	112M-8	45
2.2	90L-2	25	100L1-4	34	112M-6	45	132S-8	63
3	100L-2	33	100L2-4	38	132S-6	63	132M-8	79
4	112M-2	45	112M-4	43	132M1-6	73	160M1-8	110
5.5	132S1-2	64	132S-4	68	132M2-6	84	160M2-8	121
7.5	132S2-2	70	132M-4	81	160M-6	121	160L-8	147
11	160M1-2	110	160M-4	118	160L-6	145	180L-8	182
15	160M2-2	120	160L-4	132	180L-6	178	200L-8	290
18.5			180M-4	164	200L1-6	200	225S-8	376
22			180L-4	182	200L2-6	228	225M-8	303
30			200L-4	245	225M-6	265	250M-8	400
37			225S-4	258	250M-6	370	280S-8	522
45			225M-4	290	280S-6	490		
55			250M-4	388	280M-6	540		
75			280S-4	510	315S-6	900		
90			280M-4	606	315M-6	980		
110			315S-4	910				
132			315M-4	1000				
160			315L1-4	1055				

Note: The weight data of motor above are only for reference as different brands of motors are also different in weight.

Weight and motor frame are subjected to change, please contact the nearest sales office for final approval based on the selection and final specifications sealed by INFINAIR

Installation

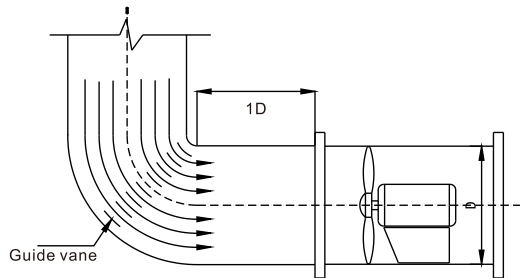


Base mounted

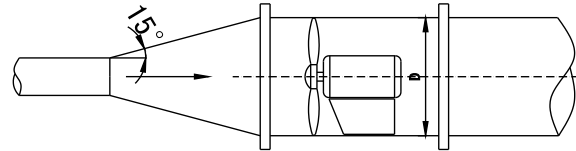


Ceiling hung

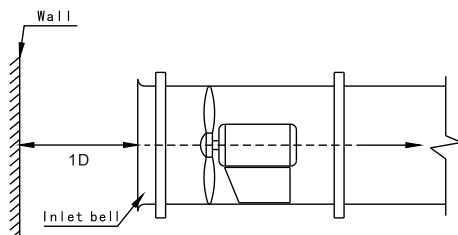
Typical Applications



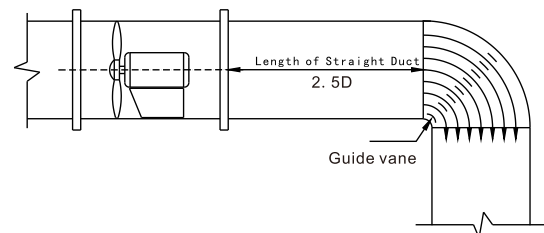
Ducted inlet application



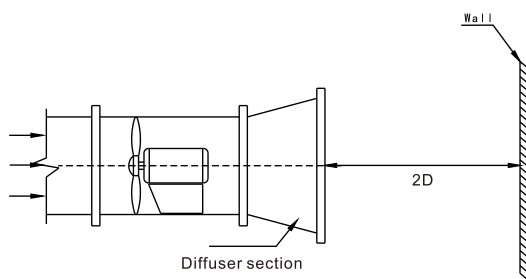
Ducted inlet application



Non-ducted inlet application



Ducted outlet application



Non-ducted outlet application

PERFORMANCE TABLES

Model: YFIAM-315D2														
Hub Dia=173.3mm				Blade Num=12		RPM=2900r/min						Density=1.2kg/m ³		
					(dB)									FEI
Deg	m³/h	Pa	Pa	kW	1	2	3	4	5	6	7	8	LwiA	Regulated
0°	583	350	348	0.364	86.1	86.1	88.1	84.1	83.1	84.1	81.1	77.1	89.9	
	955	239	232	0.327	84.3	84.3	88.9	86.6	83.1	84.1	80.2	77.1	90.2	
	1203	165	153	0.360	83.5	83.5	89.6	88.2	84.2	84.6	80.1	77.1	91.0	
	1451	96	81	0.390	83.1	83.1	89.8	88.5	85.1	85.1	80.1	77.1	91.4	
5°	1004	364	350	0.424	87.3	87.3	89.5	85.5	84.1	84.5	81.5	77.9	90.7	
	1400	266	245	0.402	85.9	85.9	89.2	86.7	83.7	84.5	80.8	78.0	90.6	
	1664	195	169	0.439	85.1	85.1	89.5	87.7	84.5	84.8	80.6	78.1	91.1	
	1928	119	86	0.453	84.7	84.7	89.7	87.8	85.2	85.1	80.5	78.1	91.4	
10°	1424	376	351	0.446	88.5	88.5	90.9	86.9	85.1	84.9	81.9	78.7	91.5	
	1844	294	260	0.492	87.4	87.4	89.5	86.8	84.4	84.9	81.3	79.0	91.1	
	2124	227	185	0.512	86.7	86.7	89.4	87.2	84.8	85.0	81.1	79.1	91.2	
	2404	148	97	0.512	86.3	86.3	89.6	87.1	85.3	85.1	80.9	79.1	91.4	
15°	1845	388	353	0.552	89.7	89.7	92.3	88.3	86.1	85.3	82.3	79.5	92.4	
	2289	322	274	0.568	89.0	89.0	89.8	86.9	85.1	85.3	81.9	79.9	91.5	
	2585	259	201	0.577	88.4	88.4	89.3	86.6	85.0	85.2	81.6	80.1	91.4	
	2881	177	107	0.566	87.9	87.9	89.5	86.4	85.4	85.1	81.3	80.1	91.4	
20°	2265	400	354	0.594	90.9	90.9	93.8	89.8	87.1	85.7	82.7	80.3	93.3	
	2733	350	288	0.639	90.5	90.5	90.1	87.0	85.8	85.7	82.5	80.9	92.0	
	3045	291	217	0.639	90.0	90.0	89.2	86.1	85.3	85.4	82.1	81.1	91.6	
	3357	206	118	0.619	89.5	89.5	89.4	85.7	85.5	85.1	81.7	81.1	91.4	
25°	2686	408	353	0.678	92.1	92.1	95.1	91.1	88.1	86.1	83.1	81.1	94.2	1.13
	3178	380	306	0.708	92.1	92.1	90.4	87.2	86.5	86.1	83.1	81.8	92.6	1.23
	3506	323	233	0.700	91.6	91.6	89.1	85.6	85.6	85.6	82.6	82.1	91.8	1.25
	3834	236	128	0.670	91.1	91.1	89.3	85.1	85.6	85.1	82.1	82.1	91.5	1.22
30°	3164	456	380	0.843	88.6	88.6	94.6	90.1	88.6	86.6	82.6	81.1	94.1	1.16
	3763	434	328	0.899	88.6	88.6	91.8	87.3	87.8	86.6	82.6	81.5	93.1	1.27
	4162	390	260	0.906	88.1	88.1	91.1	86.3	87.5	86.3	82.3	81.6	92.7	1.32
	4562	306	150	0.886	87.6	87.6	91.3	86.2	87.9	86.2	82.2	81.6	92.8	1.32
35°	3643	500	404	1.010	85.1	85.1	94.1	89.1	89.1	87.1	82.1	81.1	94.1	1.20
	4349	497	359	1.087	85.1	85.1	93.3	87.6	89.1	87.1	82.1	81.1	93.8	1.35
	4819	456	287	1.112	84.7	84.7	93.1	87.1	89.5	87.1	82.1	81.1	93.8	1.42
	5290	376	171	1.101	84.1	84.1	93.3	87.3	90.3	87.3	82.3	81.1	94.2	1.46

Performance shown is for installation type B - free inlet, ducted outlet. Performance ratings do not include the effects of appurtenances(accessories). Values shown are for inlet LwIA sound power levels for Installation type B: free inlet, ducted outlet. The sound power level ratings shown are in decibels, referred to as 10⁻¹² Watts , calculated per AMCA International Standard 301. The A-weighted sound ratings shown have been calculated per AMCA International Standard 301. dBA A-weighted sound pressure level is based on 11.5dB sound attenuation per octave band at 1.5m. dBA A-weighted sound pressure level are not licensed by AMCA International.

Model: YFIAM-315D4														
Hub Dia=173.3mm				Blade Num=12			RPM=1450r/min				Density=1.2kg/m³			
					(dB)									FEI
Deg	m³/h	Pa	Pa	kW	1	2	3	4	5	6	7	8	LwiA	Regulated
0°	292	88	87	0.045	71.0	73.0	69.0	68.0	69.0	66.0	62.0	64.0	73.4	
	478	60	58	0.041	69.3	73.9	71.6	68.0	69.0	65.1	62.0	64.0	73.4	
	602	41	38	0.045	68.4	74.6	73.1	69.1	69.6	65.0	62.0	64.0	73.9	
	726	24	20	0.049	68.0	74.7	73.4	70.0	70.0	65.0	62.0	64.0	74.3	
5°	502	91	87	0.053	72.2	74.4	70.4	69.0	69.4	66.4	62.8	65.4	74.1	
	700	67	61	0.050	70.8	74.1	71.7	68.7	69.4	65.7	63.0	65.4	74.0	
	832	49	42	0.055	70.1	74.5	72.6	69.4	69.8	65.5	63.0	65.4	74.3	
	964	30	22	0.057	69.6	74.6	72.7	70.1	70.0	65.4	63.0	65.5	74.5	
10°	712	94	88	0.056	73.4	75.8	71.8	70.0	69.8	66.8	63.6	66.8	74.8	1.11
	922	73	65	0.062	72.4	74.4	71.8	69.4	69.8	66.3	63.9	66.8	74.6	1.13
	1062	57	46	0.064	71.7	74.3	72.1	69.7	70.0	66.0	64.0	66.8	74.7	1.12
	1202	37	24	0.064	71.2	74.5	72.0	70.2	70.0	65.8	64.0	66.9	74.8	1.10
15°	922	97	88	0.069	74.6	77.2	73.2	71.0	70.2	67.2	64.4	68.2	75.6	1.18
	1144	80	68	0.071	73.9	74.7	71.9	70.1	70.2	66.9	64.9	68.2	75.3	1.24
	1292	65	50	0.072	73.3	74.2	71.6	70.0	70.1	66.5	65.0	68.2	75.2	1.25
	1440	44	27	0.071	72.8	74.4	71.4	70.3	70.0	66.2	65.0	68.4	75.1	1.24
20°	1133	100	89	0.074	75.8	78.6	74.6	72.0	70.6	67.6	65.2	69.6	76.4	1.31
	1367	87	72	0.080	75.5	75.0	72.0	70.7	70.6	67.4	65.8	69.6	76.0	1.37
	1523	73	54	0.080	74.9	74.1	71.0	70.2	70.3	67.0	66.0	69.6	75.7	1.39
	1679	52	29	0.077	74.4	74.3	70.7	70.4	70.0	66.6	66.0	69.8	75.6	1.39
25°	1343	102	88	0.085	77.0	80.0	76.0	73.0	71.0	68.0	66.0	71.0	77.3	1.39
	1589	95	77	0.089	77.0	75.3	72.1	71.4	71.0	68.0	66.8	71.0	76.7	1.51
	1753	81	58	0.087	76.5	74.0	70.5	70.5	70.5	67.5	67.0	71.0	76.3	1.55
	1917	59	32	0.084	76.0	74.3	70.0	70.5	70.0	67.0	67.0	71.3	76.1	1.56
30°	1582	114	95	0.105	73.5	79.5	75.0	73.5	71.5	67.5	66.0	68.5	76.9	1.47
	1882	109	82	0.112	73.5	76.8	72.3	72.7	71.5	67.5	66.4	68.5	76.5	1.60
	2081	97	65	0.113	73.1	76.0	71.3	72.5	71.3	67.3	66.5	68.5	76.3	1.67
	2281	76	37	0.111	72.5	76.2	71.1	72.8	71.1	67.1	66.5	68.6	76.3	1.70
35°	1822	125	101	0.126	70.0	79.0	74.0	74.0	72.0	67.0	66.0	66.0	76.8	1.55
	2174	124	90	0.136	70.0	78.3	72.5	74.0	72.0	67.0	66.0	66.0	76.7	1.72
	2410	114	72	0.139	69.6	78.0	72.0	74.4	72.0	67.0	66.0	66.0	76.8	1.81
	2645	94	43	0.138	69.0	78.2	72.2	75.2	72.2	67.2	66.0	66.0	77.1	1.87

Performance shown is for installation type B - free inlet, ducted outlet. Performance ratings do not include the effects of appurtenances(accessories). Values shown are for inlet LwiA sound power levels for Installation type B: free inlet, ducted outlet. The sound power level ratings shown are in decibels, referred to as 10⁻¹² Watts, calculated per AMCA International Standard 301. The A-weighted sound ratings shown have been calculated per AMCA International Standard 301. dBA A-weighted sound pressure level is based on 11.5dB sound attenuation per octave band at 1.5m. dBA A-weighted sound pressure level are not licensed by AMCA International.

Model: YFIAM-355D2														
Hub Dia=194.7mm				Blade Num=12				RPM=2900r/min				Density=1.2kg/m³		
					(dB)									FEI
Deg	m³/h	Pa	Pa	kW	1	2	3	4	5	6	7	8	LwA	regulated
0°	828	442	440	0.652	89.6	89.6	91.6	87.6	86.6	87.6	84.6	80.6	93.4	
	1356	302	293	0.586	87.8	87.8	92.4	90.1	86.6	87.6	83.7	80.6	93.7	
	1708	208	193	0.646	87.0	87.0	93.1	91.7	87.7	88.1	83.6	80.6	94.5	
	2060	121	103	0.698	86.6	86.6	93.3	92.0	88.6	88.6	83.6	80.6	94.9	
5°	1425	460	442	0.71760	90.8	90.8	93.0	89.0	87.6	88.0	85.0	81.4	94.2	
	1987	336	310	0.720	89.4	89.4	92.7	90.2	87.2	88.0	84.3	81.5	94.1	
	2361	246	213	0.788	88.6	88.6	93.0	91.2	88.0	88.3	84.1	81.6	94.6	
	2736	151	109	0.812	88.2	88.2	93.2	91.3	88.7	88.6	84.0	81.6	94.9	
10°	2021	475	444	0.799	92.0	92.0	94.4	106.9	88.6	88.4	85.4	82.2	95.0	
	2617	371	328	0.883	90.9	90.9	93.0	90.3	87.9	88.4	84.8	82.5	94.6	
	3015	287	234	0.918	90.2	90.2	92.9	90.7	88.3	88.5	84.6	82.6	94.7	
	3412	187	122	0.917	89.8	89.8	93.1	90.6	88.8	88.6	84.4	82.6	94.9	
15°	2618	490	446	0.91689	93.2	93.2	95.8	91.8	89.6	88.8	85.8	83.0	95.9	
	3248	406	346	1.019	92.5	92.5	93.3	90.4	88.6	88.8	85.4	83.4	95.0	
	3668	327	254	1.035	91.9	91.9	92.8	90.1	88.5	88.7	85.1	83.6	94.9	
	4089	224	136	1.014	91.4	91.4	93.0	89.9	88.9	88.6	84.8	83.6	94.9	
20°	3215	505	448	1.064	94.4	94.4	97.3	93.3	90.6	89.2	86.2	83.8	96.8	1.1
	3879	442	364	1.146	94.0	94.0	93.6	90.5	89.3	89.2	86.0	81.6	95.5	1.10
	4322	367	274	1.146	93.5	93.5	92.7	89.6	88.8	88.9	85.6	84.6	95.1	1.12
	4765	261	149	1.109	93.0	93.0	92.9	89.2	89.0	88.6	85.2	84.6	94.9	1.14
25°	3812	515	445	1.215	95.6	95.6	98.6	94.6	91.6	89.6	86.6	84.6	97.7	1.26
	4510	479	386	1.270	95.6	95.6	93.9	90.7	90.0	89.6	86.6	85.3	96.1	1.31
	4976	408	295	1.254	95.1	95.1	92.6	89.1	89.1	89.1	86.1	85.6	95.3	1.31
	5441	297	162	1.202	94.6	94.6	92.8	88.6	89.1	88.6	85.6	85.6	95.0	1.37
30°	4491	576	480	1.512	92.1	92.1	98.1	93.6	92.1	90.1	86.1	84.6	97.6	1.46
	5341	548	414	1.611	92.1	92.1	95.3	90.8	91.3	90.1	86.1	85.0	96.6	1.50
	5908	492	329	1.624	91.6	91.6	94.6	89.8	91.0	89.8	85.8	85.1	96.2	1.49
	6474	386	189	1.588	91.1	91.1	94.8	89.7	91.4	89.7	85.7	85.1	96.3	1.60
35°	5171	631	510	1.810	88.6	88.6	97.6	92.6	92.6	90.6	85.6	84.6	97.6	1.69
	6172	627	453	1.948	88.6	88.6	96.8	91.1	92.6	90.6	85.6	84.6	97.3	1.07
	6840	576	363	1.993	88.2	88.2	96.6	90.6	93.0	90.6	85.6	84.6	97.3	1.12
	7508	475	216	1.973	87.6	87.6	96.8	90.8	93.8	90.8	85.8	84.6	97.7	1.1

Performance shown is for installation type B - free inlet, ducted outlet. Performance ratings do not include the effects of appurtenances(accessories). Values shown are for inlet LwA sound power levels for Installation type B: free inlet, ducted outlet. The sound power level ratings shown are in decibels, referred to as 10⁻¹² Watts, calculated per AMCA International Standard 301. The A-weighted sound ratings shown have been calculated per AMCA International Standard 301. dBA A-weighted sound pressure level is based on 11.5dB sound attenuation per octave band at 1.5m. dBA A-weighted sound pressure level are not licensed by AMCA International.

Model: YFIAM-355D4														
Hub Dia=194.7mm						Blade Num=12		RPM=1450r/min				Density=1.2kg/m³		
								(dB)					FEI	
Deg	m³/h	Pa	Pa	kW	1	2	3	4	5	6	7	8	LwA	regulated
0°	414	111	110	0.081	74.6	76.6	72.6	71.6	72.6	69.6	65.6	67.6	77.0	
	678	75	73	0.073	72.8	77.4	75.1	71.6	72.6	68.7	65.6	67.6	77.0	
	854	52	48	0.081	72.0	78.1	76.7	72.7	73.1	68.6	65.6	67.6	77.5	
	1030	30	26	0.087	71.6	78.3	77.0	73.6	73.6	68.6	65.6	67.6	77.9	
5°	712	115	110	0.095	75.8	78.0	74.0	72.6	73.0	70.0	66.4	69.0	77.7	
	993	84	77	0.090	74.4	77.7	75.2	72.2	73.0	69.3	66.5	69.0	77.6	
	1181	62	53	0.098	73.6	78.0	76.2	73.0	73.3	69.1	66.6	69.0	77.8	
	1368	38	27	0.101	73.2	78.2	76.3	73.7	73.6	69.0	66.6	69.0	78.1	1.17
10°	1011	119	111	0.100	77.0	79.4	75.4	106.9	73.4	70.4	67.2	70.4	78.4	1.20
	1309	93	82	0.110	75.9	78.0	75.3	72.9	73.4	69.8	67.5	70.4	78.2	1.18
	1507	72	58	0.115	75.2	77.9	75.7	73.3	73.5	69.6	67.6	70.4	78.3	1.16
	1706	47	31	0.115	74.8	78.1	75.6	73.8	73.6	69.4	67.6	70.5	78.4	1.30
15°	1309	123	111	0.124	78.2	80.8	76.8	74.6	73.8	70.8	68.0	71.8	78.5	1.35
	1624	102	86	0.127	77.5	78.3	75.4	73.6	73.8	70.4	68.4	71.8	78.8	1.37
	1834	82	64	0.129	76.9	77.8	75.1	73.5	73.7	70.1	68.6	71.8	78.7	1.33
	2044	56	34	0.127	76.4	78.0	74.9	73.9	73.6	69.8	68.6	71.9	78.7	1.45
20°	1607	126	112	0.133	79.4	82.3	78.3	75.6	74.2	71.2	68.8	73.2	80.0	1.51
	1940	110	91	0.143	79.0	78.6	75.5	74.3	74.2	71.0	69.4	91.6	79.5	1.60
	2161	92	69	0.143	78.5	77.7	74.6	73.8	73.9	70.6	69.6	73.2	79.3	1.71
	2382	65	37	0.139	78.0	77.9	74.2	74.0	73.6	70.2	69.6	73.4	79.2	1.72
25°	1906	129	111	0.152	80.6	83.6	79.6	76.6	74.6	71.6	69.6	74.6	80.9	1.66
	2255	120	97	0.159	80.6	78.9	75.7	75.0	74.6	71.6	70.3	74.6	80.3	1.68
	2488	102	74	0.157	80.1	77.6	74.1	74.1	74.1	71.1	70.6	74.6	79.9	1.72
	2721	74	41	0.150	79.6	77.8	73.6	74.1	73.6	70.6	70.6	74.8	79.7	1.75
30°	2246	144	120	0.189	77.1	83.1	78.6	77.1	75.1	71.1	69.6	72.1	80.5	1.69
	2671	137	104	0.201	77.1	80.3	75.8	76.3	75.1	71.1	70.0	72.1	80.1	1.86
	2954	123	82	0.203	76.6	79.6	74.8	76.0	74.8	70.8	70.1	72.1	79.9	1.93
	3237	97	47	0.198	76.1	79.8	74.7	76.4	74.7	70.7	70.1	72.2	79.9	1.98
35°	2585	158	128	0.226	73.6	82.6	77.6	77.6	75.6	70.6	69.6	69.6	80.4	1.97
	3086	157	113	0.244	73.6	81.8	76.1	77.6	75.6	70.6	69.6	69.6	80.3	2.00
	3420	144	91	0.249	73.2	81.6	75.6	78.0	75.6	70.6	69.6	69.6	80.4	1.98
	3754	119	54	0.247	72.6	81.8	75.8	78.8	75.8	70.8	69.6	69.6	80.7	1.99

Performance shown is for installation type B - free inlet, ducted outlet. Performance ratings do not include the effects of appurtenances(accessories). Values shown are for inlet LwA sound power levels for Installation type B: free inlet, ducted outlet. The sound power level ratings shown are in decibels, referred to as 10⁻¹² Watts, calculated per AMCA International Standard 301. The A-weighted sound ratings shown have been calculated per AMCA International Standard 301. dBA A-weighted sound pressure level is based on 11.5dB sound attenuation per octave band at 1.5m. dBA A-weighted sound pressure level are not licensed by AMCA International.

Model: YFIAM-400D2														
Hub Dia=219.5mm				Blade Num=12			RPM=2900r/min				Density=1.2kg/m³			
					(dB)									FEI
Deg	m³/h	Pa	Pa	kW	1	2	3	4	5	6	7	8	LwiA	Regulated
0°	1185	562	558	1.186	93.3	93.3	95.3	91.3	90.3	91.3	88.3	84.3	97.1	
	1941	383	373	1.066	91.5	91.5	96.1	93.8	90.3	91.3	87.4	84.3	97.4	
	2445	264	245	1.175	90.7	90.7	96.8	95.4	91.4	91.8	87.3	84.3	98.2	
	2949	154	130	1.270	90.3	90.3	97.0	95.7	92.3	92.3	87.3	84.3	98.6	
5°	2040	584	561	1.383	94.5	94.5	96.7	92.7	91.3	91.7	88.7	85.1	97.9	
	2845	427	393	1.310	93.1	93.1	96.4	93.9	90.9	91.7	88.0	85.2	97.8	
	3381	313	271	1.433	92.3	92.3	96.7	94.9	91.7	92.0	87.8	85.3	98.3	
	3918	191	139	1.477	91.9	91.9	96.9	95.0	92.4	92.3	87.7	85.3	98.6	
10°	2894	603	563	1.453	95.7	95.7	98.1	106.9	92.3	92.1	89.1	85.9	98.7	
	3748	472	416	1.605	94.6	94.6	96.7	94.0	91.6	92.1	88.5	86.2	98.3	
	4317	364	297	1.669	93.9	93.9	96.6	94.4	92.0	92.2	88.3	86.3	98.4	
	4886	238	156	1.668	93.5	93.5	96.8	94.3	92.5	92.3	88.1	86.3	98.6	
15°	3749	623	566	1.800	96.9	96.9	99.5	95.5	93.3	92.5	89.5	86.7	99.6	
	4651	516	439	1.853	96.2	96.2	97.0	94.1	92.3	92.5	89.1	87.1	98.7	
	5253	415	323	1.882	95.6	95.6	96.5	93.8	92.2	92.4	88.8	87.3	98.6	
	5854	285	172	1.845	95.1	95.1	96.7	93.6	92.6	92.3	88.5	87.3	98.6	
20°	4603	642	569	1.936	98.1	98.1	101.0	97.0	94.3	92.9	89.9	87.5	100.5	
	5555	561	462	2.085	97.7	97.7	97.3	94.2	93.0	92.9	89.7	91.6	99.2	
	6189	467	349	2.084	97.2	97.2	96.4	93.3	92.5	92.6	89.3	88.3	98.8	
	6823	331	189	2.017	96.7	96.7	96.6	92.9	92.7	92.3	88.9	88.3	98.6	
25°	5458	655	566	2.211	99.3	99.3	102.3	98.3	95.3	93.3	90.3	88.3	101.4	
	6458	609	491	2.310	99.3	99.3	97.6	94.4	93.7	93.3	90.3	89.0	99.8	
	7124	518	374	2.281	98.8	98.8	96.3	92.8	92.8	92.8	89.8	89.3	99.0	
	7791	378	206	2.186	98.3	98.3	96.5	92.3	92.8	92.3	89.3	89.3	98.7	
30°	6431	732	610	2.750	95.8	95.8	101.8	97.3	95.8	93.8	89.8	88.3	101.3	
	7648	697	526	2.930	95.8	95.8	99.0	94.5	95.0	93.8	89.8	88.7	100.3	1.14
	8459	625	417	2.954	95.3	95.3	98.3	93.5	94.7	93.5	89.5	88.8	99.9	1.19
	9271	491	240	2.889	94.8	94.8	98.5	93.4	95.1	93.4	89.4	88.8	100.0	1.19
35°	7404	802	648	3.293	92.3	92.3	101.3	96.3	96.3	94.3	89.3	88.3	101.3	
	8838	797	575	3.544	92.3	92.3	100.5	94.8	96.3	94.3	89.3	88.3	101.0	1.23
	9794	732	461	3.625	91.9	91.9	100.3	94.3	96.7	94.3	89.3	88.3	101.0	1.30
	10750	604	274	3.589	91.3	91.3	100.5	94.5	97.5	94.5	89.5	88.3	101.4	1.34

Performance shown is for installation type B - free inlet, ducted outlet. Performance ratings do not include the effects of appurtenances (accessories). Values shown are for inlet LwA sound power levels for Installation type B: free inlet, ducted outlet. The sound power level ratings shown are in decibels, referred to as 10⁻¹² Watts, calculated per AMCA International Standard 301. The A-weighted sound ratings shown have been calculated per AMCA International Standard 301. dBA A-weighted sound pressure level is based on 11.5dB sound attenuation per octave band at 1.5m. dBA A-weighted sound pressure level are not licensed by AMCA International.

Model: YFIAM-400D4														
Hub Dia=219.5mm				Blade Num=12		RPM=1450r/min						Density=1.2kg/m³		
					(dB)									FEI
Deg	m³/h	Pa	Pa	kW	1	2	3	4	5	6	7	8	LwIA	Regulated
0°	593	140	139	0.148	78.2	80.2	76.2	75.2	76.2	73.2	69.2	71.2	80.6	
	971	96	93	0.133	76.4	81.0	78.7	75.2	76.2	72.3	69.2	71.2	80.6	
	1223	66	61	0.147	75.6	81.7	80.3	76.3	76.7	72.2	69.2	71.2	81.1	
	1475	38	33	0.159	75.2	81.9	80.6	77.2	77.2	72.2	69.2	71.2	81.5	
5°	1020	146	140	0.173	79.4	81.6	77.6	76.2	76.6	73.6	70.0	72.6	81.3	
	1422	107	98	0.164	78.0	81.3	78.8	75.8	76.6	72.9	70.1	72.6	81.2	
	1691	78	68	0.179	77.2	81.6	79.8	76.6	76.9	72.7	70.2	72.6	81.4	
	1959	48	35	0.185	76.8	81.8	79.9	77.3	77.2	72.6	70.2	72.6	81.7	
10°	1447	151	141	0.182	80.6	83.0	79.0	106.9	77.0	74.0	70.8	74.0	82.0	
	1874	118	104	0.201	79.5	81.6	78.9	76.5	77.0	73.4	71.1	74.0	81.8	
	2158	91	74	0.209	78.8	81.5	79.3	76.9	77.1	73.2	71.2	74.0	81.9	
	2443	60	39	0.208	78.4	81.7	79.2	77.4	77.2	73.0	71.2	74.1	82.0	
15°	1874	156	142	0.225	81.8	84.4	80.4	78.2	77.4	74.4	71.6	75.4	82.8	1.13
	2326	129	110	0.232	81.1	81.9	79.0	77.2	77.4	74.0	72.0	75.4	82.4	1.20
	2626	104	81	0.235	80.5	81.4	78.7	77.1	77.3	73.7	72.2	75.4	82.3	1.20
	2927	71	43	0.231	80.0	81.6	78.5	77.5	77.2	73.4	72.2	75.5	82.3	1.17
20°	2302	160	142	0.242	83.0	85.9	81.9	79.2	77.8	74.8	72.4	76.8	83.6	1.28
	2777	140	116	0.261	82.6	82.2	79.1	77.9	77.8	74.6	73.0	91.6	83.1	1.33
	3094	117	87	0.261	82.1	81.3	78.2	77.4	77.5	74.2	73.2	76.8	82.9	1.35
	3411	83	47	0.252	81.6	81.5	77.8	77.6	77.2	73.8	73.2	77.0	82.8	1.34
25°	2729	164	141	0.276	84.2	87.2	83.2	80.2	78.2	75.2	73.2	78.2	84.5	1.35
	3229	152	123	0.289	84.2	82.5	79.3	78.6	78.2	75.2	73.9	78.2	83.9	1.48
	3562	129	94	0.285	83.7	81.2	77.7	77.7	77.7	74.7	74.2	78.2	83.5	1.53
	3896	94	52	0.273	83.2	81.4	77.2	77.7	77.2	74.2	74.2	78.4	83.3	1.54
30°	3215	183	152	0.344	80.7	86.7	82.2	80.7	78.7	74.7	73.2	75.7	84.1	1.40
	3824	174	132	0.366	80.7	83.9	79.4	79.9	78.7	74.7	73.6	75.7	83.7	1.54
	4230	156	104	0.369	80.2	83.2	78.4	79.6	78.4	74.4	73.7	75.7	83.5	1.61
	4635	123	60	0.361	79.7	83.4	78.3	80.0	78.3	74.3	73.7	75.8	83.5	1.64
35°	3702	201	162	0.412	77.2	86.2	81.2	81.2	79.2	74.2	73.2	73.2	84.0	1.46
	4419	199	144	0.443	77.2	85.4	79.7	81.2	79.2	74.2	73.2	73.2	83.9	1.64
	4897	183	115	0.453	76.8	85.2	79.2	81.6	79.2	74.2	73.2	73.2	84.0	1.74
	5375	151	69	0.449	76.2	85.4	79.4	82.4	79.4	74.4	73.2	73.2	84.3	1.80

Performance shown is for installation type B - free inlet, ducted outlet. Performance ratings do not include the effects of appurtenances(accessories). Values shown are for inlet LwIA sound power levels for Installation type B: free inlet, ducted outlet. The sound power level ratings shown are in decibels, referred to as 10⁻¹² Watts , calculated per AMCA International Standard 301. The A-weighted sound ratings shown have been calculated per AMCA International Standard 301. dBA A-weighted sound pressure level is based on 11.5dB sound attenuation per octave band at 1.5m. dBA A-weighted sound pressure level are not licensed by AMCA International.

Model: YFIAM-400D6														
Hub Dia=219.5mm				Blade Num=12		RPM=960r/min						Density=1.2kg/m³		
					(dB)									FEI
Deg	m³/h	Pa	Pa	kW	1	2	3	4	5	6	7	8	LwIA	Regulated
0°	392	62	61	0.043	70.5	69.0	67.3	66.9	65.5	61.9	61.5	63.5	70.9	
	643	42	41	0.039	70.3	70.8	69.8	66.9	65.0	61.5	61.5	63.5	71.0	
	809	29	27	0.043	70.4	72.0	71.4	67.6	65.1	61.5	61.5	63.5	71.4	
	976	17	14	0.046	70.3	72.3	71.7	68.3	65.3	61.5	61.5	63.5	71.6	
5°	675	64	61	0.050	71.8	70.4	68.7	67.5	65.9	62.5	62.7	65.3	71.8	
	942	47	43	0.048	71.1	71.0	69.9	67.4	65.5	62.3	62.7	65.2	71.8	
	1119	34	30	0.052	70.9	71.7	70.9	67.9	65.5	62.3	62.7	65.1	72.0	
	1297	21	15	0.054	70.9	71.8	71.0	68.3	65.5	62.3	62.7	65.1	72.0	
10°	958	66	62	0.053	73.1	71.8	70.1	106.9	66.3	63.2	63.8	67.0	72.8	
	1241	52	46	0.058	71.9	71.2	70.0	67.9	65.9	63.1	63.9	66.8	72.6	
	1429	40	33	0.061	71.5	71.4	70.4	68.1	65.9	63.1	64.0	66.8	72.7	
	1617	26	17	0.061	71.5	71.4	70.3	68.4	65.8	63.0	64.0	66.9	72.7	
15°	1241	68	62	0.065	74.5	73.2	71.5	68.8	66.7	63.8	65.0	68.8	73.8	
	1540	57	48	0.067	72.7	71.4	70.1	68.4	66.5	63.9	65.1	68.5	73.5	1.17
	1739	46	35	0.068	72.1	71.0	69.8	68.3	66.2	63.9	65.2	68.4	73.4	1.20
	1938	31	19	0.067	72.1	70.9	69.6	68.4	66.0	63.8	65.3	68.6	73.4	1.21
20°	1524	70	62	0.070	75.9	74.7	73.0	69.5	67.1	64.5	66.1	70.5	74.8	1.22
	1839	61	51	0.076	73.5	71.5	70.2	68.9	67.0	64.7	66.4	91.6	74.5	1.30
	2049	51	38	0.076	72.7	70.6	69.3	68.6	66.6	64.7	66.5	70.1	74.3	1.33
	2259	36	21	0.073	72.6	70.5	68.9	68.5	66.3	64.5	66.6	70.4	74.3	1.36
25°	1807	72	62	0.080	77.1	76.0	74.3	70.1	67.5	65.1	67.3	72.3	76.0	1.32
	2138	67	54	0.084	74.3	71.8	70.4	69.5	67.5	65.5	67.6	71.9	75.5	1.44
	2358	57	41	0.083	73.3	70.3	68.8	68.8	67.0	65.5	67.7	71.7	75.3	1.49
	2579	41	23	0.079	73.2	70.1	68.6	68.5	66.5	65.3	67.8	72.0	75.3	1.53
30°	2129	80	67	0.100	75.4	75.3	73.3	70.6	67.4	64.9	65.8	68.3	74.6	1.40
	2532	76	58	0.106	73.7	72.5	70.8	70.3	67.4	65.1	66.0	68.1	74.3	1.55
	2800	68	46	0.107	73.1	71.6	70.2	70.0	67.1	65.1	66.0	68.0	74.1	1.63
	3069	54	26	0.105	73.0	71.6	70.4	70.1	67.0	65.0	66.1	68.2	74.2	1.67
35°	2451	88	71	0.119	73.7	74.5	72.3	71.1	67.3	64.7	64.3	64.3	73.8	1.49
	2926	87	63	0.129	73.2	73.3	71.7	71.1	67.3	64.7	64.3	64.3	73.7	1.67
	3242	80	50	0.132	72.9	72.9	71.7	71.3	67.3	64.7	64.3	64.3	73.8	1.76
	3559	66	30	0.130	72.8	73.1	72.3	71.7	67.5	64.8	64.3	64.3	74.0	1.84

Performance shown is for installation type B - free inlet, ducted outlet. Performance ratings do not include the effects of appurtenances(accessories). Values shown are for inlet LwIA sound power levels for Installation type B: free inlet, ducted outlet. The sound power level ratings shown are in decibels, referred to as 10⁻¹² Watts, calculated per AMCA International Standard 301. The A-weighted sound ratings shown have been calculated per AMCA International Standard 301. dBA A-weighted sound pressure level is based on 11.5dB sound attenuation per octave band at 1.5m. dBA A-weighted sound pressure level are not licensed by AMCA International.

Model: YFIAM-450D2													FEG60	
Hub Dia=246.4mm				Blade Num=12				RPM=2900r/min				Density=1.2kg/m³		
					(dB)									FEI
Deg	m³/h	Pa	Pa	kW	1	2	3	4	5	6	7	8	LwIA	Regulated
0°	1678	708	704	2.116	96.8	96.8	98.8	94.8	93.8	94.8	91.8	87.8	100.6	
	2748	483	470	1.902	95.0	95.0	99.6	97.3	93.8	94.8	90.9	87.8	100.9	
	3461	333	309	2.098	94.2	94.2	100.3	98.9	94.9	95.3	90.8	87.8	101.7	
	4175	194	164	2.267	93.8	93.8	100.5	99.2	95.8	95.8	90.8	87.8	102.1	
5°	2887	736	707	2.467	98.0	98.0	100.2	96.2	94.8	95.2	92.2	88.6	101.4	
	4027	538	496	2.339	96.6	96.6	99.9	97.4	94.4	95.2	91.5	88.7	101.3	
	4786	395	342	2.556	95.8	95.8	100.2	98.4	95.2	95.5	91.3	88.8	101.8	
	5545	241	175	2.635	95.4	95.4	100.4	98.5	95.9	95.8	91.2	88.8	102.1	
10°	4097	761	710	2.593	99.2	99.2	101.6	106.9	95.8	95.6	92.6	89.4	102.2	
	5305	595	525	2.865	98.1	98.1	100.2	97.5	95.1	95.6	92.0	89.7	101.8	
	6111	459	374	2.978	97.4	97.4	100.1	97.9	95.5	95.7	91.8	89.8	101.9	
	6916	300	196	2.976	97.0	97.0	100.3	97.8	96.0	95.8	91.6	89.8	102.1	
15°	5307	785	714	3.212	100.4	100.4	103.0	99.0	96.8	96.0	93.0	90.2	103.1	
	6584	651	554	3.307	99.7	99.7	100.5	97.6	95.8	96.0	92.6	90.6	102.2	
	7435	524	407	3.359	99.1	99.1	100.0	97.3	95.7	95.9	92.3	90.8	102.1	
	8287	359	217	3.293	98.6	98.6	100.2	97.1	96.1	95.8	92.0	90.8	102.1	
20°	6516	809	717	3.455	101.6	101.6	104.5	100.5	97.8	96.4	93.4	91.0	104.0	
	7863	707	583	3.720	101.2	101.2	100.8	97.7	96.5	96.4	93.2	91.6	102.7	
	8760	588	439	3.720	100.7	100.7	99.9	96.8	96.0	96.1	92.8	91.8	102.3	
	9658	418	239	3.599	100.2	100.2	100.1	96.4	96.2	95.8	92.4	91.8	102.1	
25°	7726	825	713	3.945	102.8	102.8	105.8	101.8	98.8	96.8	93.8	91.8	104.9	
	9141	768	619	4.122	102.8	102.8	101.1	97.9	97.2	96.8	93.8	92.5	103.3	
	10085	653	472	4.071	102.3	102.3	99.8	96.3	96.3	96.3	93.3	92.8	102.5	
	11028	476	260	3.901	101.8	101.8	100.0	95.8	96.3	95.8	92.8	92.8	102.2	
30°	9103	922	769	4.908	99.3	99.3	105.3	100.8	99.3	97.3	93.3	91.8	104.8	
	10826	878	663	5.230	99.3	99.3	102.5	98.0	98.5	97.3	93.3	92.2	103.8	1.11
	11974	788	526	5.272	98.8	98.8	101.8	97.0	98.2	97.0	93.0	92.3	103.4	1.17
	13123	619	303	5.155	98.3	98.3	102.0	96.9	98.6	96.9	92.9	92.3	103.5	1.17
35°	10481	1011	817	5.877	95.8	95.8	104.8	99.8	99.8	97.8	92.8	91.8	104.8	
	12510	1005	725	6.325	95.8	95.8	104.0	98.3	99.8	97.8	92.8	91.8	104.5	1.23
	13864	923	581	6.470	95.4	95.4	103.8	97.8	100.2	97.8	92.8	91.8	104.5	1.30
	15217	761	346	6.405	94.8	94.8	104.0	98.0	101.0	98.0	93.0	91.8	104.9	1.34

Performance shown is for installation type B - free inlet, ducted outlet. Performance ratings do not include the effects of appurtenances(accessories). Values shown are for inlet LwIA sound power levels for Installation type B: free inlet, ducted outlet. The sound power level ratings shown are in decibels, referred to as 10⁻¹² Watts, calculated per AMCA International Standard 301. The A-weighted sound ratings shown have been calculated per AMCA International Standard 301. dBA A-weighted sound pressure level is based on 11.5dB sound attenuation per octave band at 1.5m. dBA A-weighted sound pressure level are not licensed by AMCA International.

Model: YFIAM-450D4															
Hub Dia=246.4mm				Blade Num=12				RPM=1450r/min				Density=1.2kg/m ³			
					(dB)									FEI	
Deg	m ³ /h	Pa	Pa	kW	1	2	3	4	5	6	7	8	LwiA	Regulated	
0°	839	177	176	0.264	81.7	83.7	79.7	78.7	79.7	76.7	72.7	74.7	84.1		
	1374	121	117	0.238	79.9	84.5	82.2	78.7	79.7	75.8	72.7	74.7	84.1		
	1731	83	77	0.262	79.1	85.2	83.8	79.8	80.2	75.7	72.7	74.7	84.6		
	2087	48	41	0.283	78.7	85.4	84.1	80.7	80.7	75.7	72.7	74.7	85.0		
5°	1444	184	177	0.308	82.9	85.1	81.1	79.7	80.1	77.1	73.5	76.1	84.8		
	2013	135	124	0.292	81.5	84.8	82.3	79.3	80.1	76.4	73.6	76.1	84.7		
	2393	99	85	0.320	80.7	85.1	83.3	80.1	80.4	76.2	73.7	76.1	84.9		
	2773	60	44	0.329	80.3	85.3	83.4	80.8	80.7	76.1	73.7	76.1	85.2		
10°	2048	190	178	0.324	84.1	86.5	82.5	106.9	80.5	77.5	74.3	77.5	85.5		
	2653	149	131	0.358	83.0	85.1	82.4	80.0	80.5	76.9	74.6	77.5	85.3		
	3055	115	94	0.372	82.3	85.0	82.8	80.4	80.6	76.7	74.7	77.5	85.4		
	3458	75	49	0.372	81.9	85.2	82.7	80.9	80.7	76.5	74.7	77.6	85.5		
15°	2653	196	178	0.402	85.3	87.9	83.9	81.7	80.9	77.9	75.1	78.9	86.3		
	3292	163	139	0.413	84.6	85.4	82.5	80.7	80.9	77.5	75.5	78.9	85.9	1.11	
	3718	131	102	0.420	84.0	84.9	82.2	80.6	80.8	77.2	75.7	78.9	85.8	1.11	
	4143	90	54	0.412	83.5	85.1	82.0	81.0	80.7	76.9	75.7	79.0	85.8	1.07	
20°	3258	202	179	0.432	86.5	89.4	85.4	82.7	81.3	78.3	75.9	80.3	87.1	1.19	
	3931	177	146	0.465	86.1	85.7	82.6	81.4	81.3	78.1	76.5	91.6	86.6	1.24	
	4380	147	110	0.465	85.6	84.8	81.7	80.9	81.0	77.7	76.7	80.3	86.4	1.26	
	4829	104	60	0.450	85.1	85.0	81.3	81.1	80.7	77.3	76.7	80.5	86.3	1.25	
25°	3863	206	178	0.493	87.7	90.7	86.7	83.7	81.7	78.7	76.7	81.7	88.0	1.27	
	4571	192	155	0.515	87.7	86.0	82.8	82.1	81.7	78.7	77.4	81.7	87.4	1.39	
	5042	163	118	0.509	87.2	84.7	81.2	81.2	81.2	78.2	77.7	81.7	87.0	1.44	
	5514	119	65	0.488	86.7	84.9	80.7	81.2	80.7	77.7	77.7	81.9	86.8	1.44	
30°	4552	231	192	0.613	84.2	90.2	85.7	84.2	82.2	78.2	76.7	79.2	87.6	1.31	
	5413	220	166	0.654	84.2	87.4	82.9	83.4	82.2	78.2	77.1	79.2	87.2	1.44	
	5987	197	132	0.659	83.7	86.7	81.9	83.1	81.9	77.9	77.2	79.2	87.0	1.51	
	6561	155	76	0.644	83.2	86.9	81.8	83.5	81.8	77.8	77.2	79.3	87.0	1.54	
35°	5240	253	204	0.735	80.7	89.7	84.7	84.7	82.7	77.7	76.7	76.7	87.5	1.36	
	6255	251	181	0.791	80.7	88.9	83.2	84.7	82.7	77.7	76.7	76.7	87.4	1.53	
	6932	231	145	0.809	80.3	88.7	82.7	85.1	82.7	77.7	76.7	76.7	87.5	1.62	
	7608	190	86	0.801	79.7	88.9	82.9	85.9	82.9	77.9	76.7	76.7	87.8	1.68	

Performance shown is for installation type B - free inlet, ducted outlet. Performance ratings do not include the effects of appurtenances(accessories). Values shown are for inlet LwiA sound power levels for Installation type B: free inlet, ducted outlet. The sound power level ratings shown are in decibels, referred to as 10⁻¹² Watts, calculated per AMCA International Standard 301. The A-weighted sound ratings shown have been calculated per AMCA International Standard 301. dBA A-weighted sound pressure level is based on 11.5dB sound attenuation per octave band at 1.5m. dBA A-weighted sound pressure level are not licensed by AMCA International.

Model: YFIAM-450D6														
Hub Dia=246.4mm				Blade Num=12				RPM=960r/min				Density=1.2kg/m3		
					(dB)									FEI
Deg	m³/h	Pa	Pa	kW	1	2	3	4	5	6	7	8	LwiA	Regulated
0°	555	78	77	0.077	74.0	72.5	70.8	70.4	69.0	65.4	65.0	67.0	74.4	
	910	53	51	0.069	73.8	74.3	73.3	70.4	68.5	65.0	65.0	67.0	74.5	
	1146	36	34	0.076	73.9	75.5	74.9	71.1	68.6	65.0	65.0	67.0	74.9	
	1382	21	18	0.082	73.8	75.8	75.2	71.8	68.8	65.0	65.0	67.0	75.1	
5°	956	81	77	0.089	75.3	73.9	72.2	71.0	69.4	66.0	66.2	68.8	75.3	
	1333	59	54	0.085	74.6	74.5	73.4	70.9	69.0	65.8	66.2	68.7	75.3	
	1584	43	37	0.093	74.4	75.2	74.4	71.4	69.0	65.8	66.2	68.6	75.5	
	1836	26	19	0.096	74.4	75.3	74.5	71.8	69.0	65.8	66.2	68.6	75.5	
10°	1356	83	78	0.094	76.6	75.3	73.6	106.9	69.8	66.7	67.3	70.5	76.3	
	1756	65	58	0.104	75.4	74.7	73.5	71.4	69.4	66.6	67.4	70.3	76.1	
	2023	50	41	0.108	75.0	74.9	73.9	71.6	69.4	66.6	67.5	70.3	76.2	
	2289	33	21	0.108	75.0	74.9	73.8	71.9	69.3	66.5	67.5	70.4	76.2	
15°	1757	86	78	0.117	78.0	76.7	75.0	72.3	70.2	67.3	68.5	72.3	77.3	1.13
	2179	71	61	0.120	76.2	74.9	73.6	71.9	70.0	67.4	68.6	72.0	77.0	1.22
	2461	57	45	0.122	75.6	74.5	73.3	71.8	69.7	67.4	68.7	71.9	76.9	1.25
	2743	39	24	0.119	75.6	74.4	73.1	71.9	69.5	67.3	68.8	72.1	76.9	1.25
20°	2157	89	79	0.125	79.4	78.2	76.5	73.0	70.6	68.0	69.6	74.0	78.3	1.28
	2603	77	64	0.135	77.0	75.0	73.7	72.4	70.5	68.2	69.9	91.6	78.0	1.36
	2900	64	48	0.135	76.2	74.1	72.8	72.1	70.1	68.2	70.0	73.6	77.8	1.40
	3197	46	26	0.131	76.1	74.0	72.4	72.0	69.8	68.0	70.1	73.9	77.8	1.41
25°	2558	90	78	0.143	80.6	79.5	77.8	73.6	71.0	68.6	70.8	75.8	79.5	1.37
	3026	84	68	0.150	77.8	75.3	73.9	73.0	71.0	69.0	71.1	75.4	79.0	1.50
	3338	72	52	0.148	76.8	73.8	72.3	72.3	70.5	69.0	71.2	75.2	78.8	1.57
	3651	52	28	0.142	76.7	73.6	72.1	72.0	70.0	68.8	71.3	75.5	78.8	1.59
30°	3013	101	84	0.178	78.9	78.8	76.8	74.1	70.9	68.4	69.3	71.8	78.1	1.45
	3584	96	73	0.190	77.2	76.0	74.3	73.8	70.9	68.6	69.5	71.6	77.8	1.60
	3964	86	58	0.191	76.6	75.1	73.7	73.5	70.6	68.6	69.5	71.5	77.6	1.69
	4344	68	33	0.187	76.5	75.1	73.9	73.6	70.5	68.5	69.6	71.7	77.7	1.73
35°	3469	111	90	0.213	77.2	78.0	75.8	74.6	70.8	68.2	67.8	67.8	77.3	1.53
	4141	110	79	0.229	76.7	76.8	75.2	74.6	70.8	68.2	67.8	67.8	77.2	1.71
	4589	101	64	0.235	76.4	76.4	75.2	74.8	70.8	68.2	67.8	67.8	77.3	1.82
	5037	83	38	0.232	76.3	76.6	75.8	75.2	71.0	68.3	67.8	67.8	77.5	1.90

Performance shown is for installation type B - free inlet, ducted outlet. Performance ratings do not include the effects of appurtenances(accessories). Values shown are for inlet LwIA sound power levels for Installation type B: free inlet, ducted outlet. The sound power level ratings shown are in decibels, referred to as 10⁻¹² Watts, calculated per AMCA International Standard 301. The A-weighted sound ratings shown have been calculated per AMCA International Standard 301. dBA A-weighted sound pressure level is based on 11.5dB sound attenuation per octave band at 1.5m. dBA A-weighted sound pressure level are not licensed by AMCA International.

Model: YFIAM-500D2														
Hub Dia=274.5mm				Blade Num=12		RPM=2900r/min							Density=1.2kg/m³	
					(dB)									FEI
Deg	m³/h	Pa	Pa	kW	1	2	3	4	5	6	7	8	LwiA	Regulated
0	6558	608	555	2.620	96.9	91.9	96.4	107.6	101.4	96.6	92.8	86.6	107.0	
	7707	462	389	2.738	95.3	90.3	95.7	106.0	101.7	97.7	93.3	87.7	106.5	
	8856	292	197	2.799	94.2	89.2	95.1	102.5	101.1	98.8	93.9	88.8	105.5	
	9430	207	99	2.822	94.0	89.0	95.0	101.6	101.0	99.0	94.4	89.4	105.4	
5	8005	722	639	3.335	96.0	93.3	97.5	107.2	101.9	97.9	93.4	87.2	107.2	
	9328	579	467	3.470	95.0	92.1	95.9	105.0	101.7	98.4	93.9	88.4	106.4	
	10650	405	260	3.481	94.4	91.1	94.9	101.8	100.8	98.7	94.3	89.5	105.3	
	11311	299	136	3.433	94.3	90.2	94.9	101.3	100.7	98.7	94.5	90.1	105.1	
10	9452	836	723	4.057	95.2	94.7	98.5	106.9	102.5	99.3	94.1	87.9	107.5	1.11
	10948	697	545	4.200	94.7	93.9	96.2	104.0	101.8	99.1	94.4	89.1	106.3	1.10
	12444	518	323	4.158	94.7	93.1	94.6	101.2	100.6	98.5	94.6	90.1	105.0	
	13192	392	174	4.039	94.7	91.5	94.8	101.0	100.3	98.3	94.6	90.7	104.9	
15	10900	950	806	4.784	94.3	96.2	99.5	106.5	103.0	100.7	94.7	88.5	108.0	1.23
	12569	815	623	4.929	94.4	95.6	96.5	103.1	101.9	99.9	95.0	89.8	106.4	1.26
	14239	631	387	4.832	94.9	95.1	94.4	100.5	100.3	98.3	95.0	90.8	104.8	1.27
	15074	484	211	4.641	95.0	92.7	94.8	100.8	100.0	98.0	94.6	91.4	104.7	1.23
20	12787	1054	843	6.107	94.6	94.9	97.4	104.7	102.4	101.0	95.0	89.2	107.3	1.25
	14651	927	650	6.366	94.9	95.0	94.6	102.0	101.4	100.3	95.5	90.3	106.2	1.28
	16515	748	400	6.445	95.4	95.2	93.4	100.3	100.2	99.0	95.9	91.5	105.1	1.29
	17447	607	220	6.345	95.4	93.2	93.9	100.6	100.2	98.9	95.9	92.1	105.1	1.26
25	14674	1158	879	7.437	94.9	93.7	95.4	102.9	101.8	101.2	95.3	89.8	106.8	1.29
	16733	1038	678	7.819	95.3	94.4	92.7	100.8	100.9	100.8	95.9	90.8	106.0	1.34
	18791	865	414	8.069	95.9	95.2	92.5	100.1	100.2	99.7	96.8	92.2	105.5	1.39
	19820	730	229	8.054	95.8	93.7	93.0	100.4	100.3	99.8	97.1	92.8	105.7	1.36
30	16562	1262	915	8.771	95.2	92.5	93.3	101.1	101.1	101.5	95.7	90.4	106.4	1.40
	18814	1150	705	9.283	95.8	93.7	90.8	99.7	100.5	101.3	96.4	91.3	106.0	1.47
	21067	982	427	9.701	96.4	95.3	91.5	99.9	100.1	100.4	97.7	92.9	105.9	1.51
	22194	853	239	9.766	96.3	94.2	92.2	100.2	100.5	100.7	98.4	93.6	106.3	1.50
35	18449	1366	952	10.108	95.5	91.2	91.3	99.3	100.5	101.7	96.0	91.0	106.1	1.50
	20896	1262	733	10.755	96.3	93.1	88.8	98.6	100.0	101.7	96.8	91.8	106.1	1.59
	23343	1099	441	11.339	96.8	95.4	90.5	99.7	100.0	101.2	98.5	93.5	106.3	1.64
	24567	976	248	11.481	96.7	94.7	91.3	100.0	100.6	101.6	99.6	94.3	106.9	1.65

Performance shown is for installation type B - free inlet, ducted outlet. Performance ratings do not include the effects of appurtenances(accessories). Values shown are for inlet LwiA sound power levels for Installation type B: free inlet, ducted outlet. The sound power level ratings shown are in decibels, referred to as 10⁻¹² Watts, calculated per AMCA International Standard 301. The A-weighted sound ratings shown have been calculated per AMCA International Standard 301. dBA A-weighted sound pressure level is based on 11.5dB sound attenuation per octave band at 1.5m. dBA A-weighted sound pressure level are not licensed by AMCA International.

Model: YFIAM-500D4														
Hub Dia=274.5mm				Blade Num=12				RPM=1450r/min				Density=1.2kg/m ³		
					(dB)									FEI
Deg	m³/h	Pa	Pa	kW	1	2	3	4	5	6	7	8	LwiA	Regulated
0°	3279	152	139	0.327	76.9	81.4	92.5	86.3	81.5	77.7	71.5	65.3	88.4	1.29
	3853	115	97	0.342	75.4	80.6	90.9	86.6	82.6	78.3	72.6	66.9	88.4	1.25
	4428	73	49	0.350	74.3	80.0	87.4	86.0	83.8	78.8	73.8	68.8	88.1	1.18
	4715	52	25	0.353	74.1	79.9	86.5	85.9	83.9	79.3	74.3	69.3	88.1	1.13
5°	4003	181	160	0.417	78.3	82.4	92.1	86.8	82.9	78.3	72.2	66.1	88.8	1.37
	4664	145	117	0.434	77.1	80.9	89.9	86.6	83.3	78.8	73.3	67.8	88.5	1.36
	5325	101	65	0.435	76.2	79.8	86.8	85.7	83.6	79.2	74.4	69.6	88.0	1.33
	5656	75	34	0.429	75.3	79.8	86.2	85.6	83.6	79.4	75.0	70.6	88.0	1.29
10°	4726	209	181	0.507	79.7	83.4	91.8	106.9	84.2	79.0	72.8	66.6	89.4	1.47
	5474	174	136	0.525	78.9	81.1	89.0	86.7	84.1	79.4	74.0	68.6	88.7	1.49
	6222	129	81	0.520	78.1	79.6	86.1	85.5	83.4	79.6	75.1	70.6	87.9	1.50
	6596	98	43	0.505	76.5	79.8	86.0	85.3	83.3	79.5	75.6	71.7	87.8	1.47
15°	5450	238	202	0.598	81.2	84.4	91.4	87.9	85.6	79.6	73.5	67.4	90.0	1.57
	6285	204	156	0.616	80.5	81.4	88.0	86.8	84.8	79.9	74.7	69.5	89.0	1.63
	7119	158	97	0.604	80.0	79.3	85.4	85.2	83.2	79.9	75.7	71.5	87.8	1.68
	7537	121	53	0.580	77.7	79.7	85.7	84.9	82.9	79.5	76.3	73.1	87.7	1.68
20°	6393	263	211	0.763	79.9	82.4	89.6	87.3	85.9	79.9	74.1	68.3	89.7	1.57
	7325	232	163	0.796	79.9	79.5	86.9	86.3	85.2	80.4	75.2	91.6	89.0	1.62
	8257	187	100	0.806	80.0	78.4	85.2	85.1	83.9	80.8	76.4	72.0	88.3	1.66
	8723	152	55	0.793	78.1	78.8	85.5	85.1	83.8	80.8	77.0	73.2	88.3	1.64
25°	7337	289	220	0.930	78.7	80.3	87.8	86.7	86.1	80.3	74.7	69.1	89.6	1.59
	8366	260	169	0.977	79.2	77.6	85.8	85.9	85.7	80.8	75.7	70.6	89.2	1.66
	9396	216	103	1.009	80.1	77.4	85.0	85.1	84.7	81.7	77.1	72.5	88.9	1.69
	9910	183	57	1.007	78.7	78.0	85.3	85.2	84.7	82.0	77.8	73.6	89.1	1.68
30°	8281	315	229	1.096	77.4	78.3	86.0	86.1	86.4	80.6	75.3	70.0	89.5	1.65
	9407	288	176	1.160	78.6	75.7	84.6	85.4	86.2	81.3	76.2	71.1	89.4	1.72
	10534	245	107	1.213	80.1	76.4	84.8	85.0	85.4	82.6	77.8	73.0	89.4	1.76
	11097	213	60	1.221	79.1	77.1	85.1	85.4	85.6	83.3	78.5	73.7	89.8	1.76
35°	9224	341	238	1.264	76.2	76.2	84.2	85.4	86.7	80.9	75.9	70.9	89.5	1.71
	10448	316	183	1.344	77.9	73.8	83.5	84.9	86.6	81.8	76.8	71.8	89.6	1.80
	11672	275	110	1.417	80.1	75.5	84.6	84.9	86.1	83.5	78.5	73.5	90.0	1.85
	12283	244	62	1.435	79.6	76.2	84.9	85.6	86.6	84.6	79.2	73.8	90.7	1.86

Performance shown is for installation type B - free inlet, ducted outlet. Performance ratings do not include the effects of appurtenances(accessories). Values shown are for inlet LwiA sound power levels for Installation type B: free inlet, ducted outlet. The sound power level ratings shown are in decibels, referred to as 10⁻¹² Watts , calculated per AMCA International Standard 301. The A-weighted sound ratings shown have been calculated per AMCA International Standard 301. dBA A-weighted sound pressure level is based on 11.5dB sound attenuation per octave band at 1.5m. dBA A-weighted sound pressure level are not licensed by AMCA International.

Model: YFIAM-500D6														
Hub Dia=274.5mm				Blade Num=12				RPM=960r/min				Density=1.2kg/m³		
					(dB)									FEI
Deg	m³/h	Pa	Pa	kW	1	2	3	4	5	6	7	8	LwiA	Regulated
0°	2171	67	61	0.095	70.7	78.8	83.6	74.5	70.3	65.1	58.9	52.7	78.0	1.33
	2551	51	43	0.099	69.6	77.5	82.0	75.3	71.1	66.0	60.3	54.6	77.7	1.36
	2932	32	22	0.102	68.8	75.3	78.5	75.8	71.9	66.9	61.9	56.9	77.3	1.35
	3122	23	11	0.102	68.7	74.7	77.6	75.8	72.2	67.4	62.4	57.4	77.3	1.35
5°	2650	79	70	0.121	71.9	79.0	83.2	75.6	71.2	65.7	59.6	53.5	78.3	1.45
	3088	63	51	0.126	70.5	77.1	81.0	75.7	71.7	66.6	61.1	55.6	77.7	1.49
	3526	44	29	0.126	69.5	74.9	77.9	75.5	72.1	67.4	62.6	57.8	77.2	1.52
	3744	33	15	0.125	69.1	74.5	77.3	75.5	72.2	67.9	63.5	59.1	77.3	1.51
10°	3129	92	79	0.147	73.0	79.3	82.9	106.9	72.2	66.4	60.2	54.0	78.7	1.57
	3624	76	60	0.152	71.3	76.7	80.1	76.2	72.4	67.3	61.9	56.5	77.9	1.64
	4120	57	35	0.151	70.1	74.4	77.2	75.3	72.2	68.0	63.5	59.0	77.2	1.68
	4367	43	19	0.147	69.6	74.4	77.1	75.2	72.1	68.3	64.4	60.5	77.3	1.69
15°	3608	104	88	0.174	74.2	79.5	82.5	77.6	73.1	67.0	60.9	54.8	79.2	1.69
	4161	89	68	0.179	72.2	76.2	79.1	76.7	73.0	67.9	62.7	57.5	78.2	1.78
	4714	69	42	0.175	70.7	73.9	76.5	75.1	72.3	68.5	64.3	60.1	77.2	1.87
	4990	53	23	0.168	70.0	74.2	76.8	74.8	72.0	68.7	65.5	62.3	77.3	1.89
20°	4233	115	92	0.222	72.5	77.6	80.7	77.6	73.4	67.5	61.7	55.9	78.8	1.74
	4850	102	71	0.231	70.8	74.8	78.0	76.7	73.4	68.4	63.2	59.6	78.2	1.83
	5467	82	44	0.234	70.2	73.4	76.3	75.5	73.1	69.3	64.9	60.5	77.8	1.91
	5776	67	24	0.230	69.6	73.7	76.6	75.4	73.1	69.6	65.8	62.0	77.9	1.92
25°	4858	127	96	0.270	70.7	75.7	78.9	77.4	73.7	68.0	62.4	56.8	78.6	1.81
	5539	114	74	0.284	69.4	73.3	77.0	76.9	73.9	68.8	63.7	58.6	78.4	1.90
	6220	95	45	0.293	69.6	72.8	76.2	76.0	74.0	70.0	65.4	60.8	78.4	1.97
	6561	80	25	0.292	69.4	73.2	76.4	76.0	74.2	70.6	66.4	62.2	78.7	1.99
30°	5482	138	100	0.318	69.1	73.8	77.2	77.4	74.0	68.5	63.2	57.9	78.6	1.89
	6228	126	77	0.337	68.0	71.8	76.2	77.0	74.4	69.3	64.2	59.1	78.6	1.99
	6974	108	47	0.352	69.0	72.3	76.0	76.3	74.8	70.8	66.0	61.2	78.9	2.07
	7347	93	26	0.354	69.0	72.7	76.4	76.6	75.3	71.5	66.7	61.9	79.4	2.09
35°	6107	150	104	0.367	67.3	71.8	76.0	77.3	74.3	69.0	64.0	59.0	78.6	1.98
	6917	138	80	0.390	66.5	70.4	75.4	77.0	74.8	69.9	64.9	59.9	78.9	2.10
	7727	120	48	0.411	68.5	71.8	75.9	76.7	75.6	71.6	66.6	61.6	79.6	2.19
	8132	107	27	0.416	68.7	72.2	76.4	77.3	76.5	72.5	67.1	61.7	80.3	2.22

Performance shown is for installation type B - free inlet, ducted outlet. Performance ratings do not include the effects of appurtenances(accessories). Values shown are for inlet LwiA sound power levels for Installation type B: free inlet, ducted outlet. The sound power level ratings shown are in decibels, referred to as 10⁻¹² Watts, calculated per AMCA International Standard 301. The A-weighted sound ratings shown have been calculated per AMCA International Standard 301. dBA A-weighted sound pressure level is based on 11.5dB sound attenuation per octave band at 1.5m. dBA A-weighted sound pressure level are not licensed by AMCA International.

Model: YFIAM-560D4														
Hub Dia=306.9mm				Blade Num=12			RPM=1450r/min					Density=1.2kg/m ³		
					(dB)									FEI
Deg	m³/h	Pa	Pa	kW	1	2	3	4	5	6	7	8	LwIA	Regulated
0°	4585	190	174	0.573	80.3	84.8	95.9	89.7	84.9	81.1	74.9	68.7	91.8	1.19
	5388	144	122	0.598	78.8	84.0	94.3	90.0	86.0	81.7	76.0	70.3	91.8	1.15
	6191	91	62	0.612	77.7	83.4	90.8	89.4	87.2	82.2	77.2	72.2	91.5	1.07
	6593	65	31	0.617	77.5	83.3	89.9	89.3	87.3	82.7	77.7	72.7	91.5	1.01
5°	5597	226	200	0.729	81.7	85.8	95.5	90.2	86.3	81.7	75.6	69.5	92.2	1.27
	6521	181	146	0.758	80.5	84.3	93.3	90.0	86.7	82.2	76.7	71.2	91.9	1.25
	7446	127	81	0.761	79.6	83.2	90.2	89.1	87.0	82.6	77.8	73.0	91.4	1.21
	7908	94	43	0.750	78.7	83.2	89.6	89.0	87.0	82.8	78.4	74.0	91.4	1.17
10°	6609	261	226	0.887	83.1	86.8	95.2	106.9	87.6	82.4	76.2	70.0	92.8	1.36
	7655	218	170	0.918	82.3	84.5	92.4	90.1	87.5	82.8	77.4	72.0	92.1	1.38
	8701	162	101	0.909	81.5	83.0	89.5	88.9	86.8	83.0	78.5	74.0	91.3	1.38
	9223	122	54	0.883	79.9	83.2	89.4	88.7	86.7	82.9	79.0	75.1	91.2	1.34
15°	7620	297	252	1.046	84.6	87.8	94.8	91.3	89.0	83.0	76.9	70.8	93.4	1.47
	8788	255	195	1.077	83.9	84.8	91.4	90.2	88.2	83.3	78.1	72.9	92.4	1.53
	9955	197	121	1.056	83.4	82.7	88.8	88.6	86.6	83.3	79.1	74.9	91.2	1.57
	10539	151	66	1.014	81.1	83.1	89.1	88.3	86.3	82.9	79.7	76.5	91.1	1.55
20°	8940	329	263	1.335	83.3	85.8	93.0	90.7	89.3	83.3	77.5	71.7	93.1	1.47
	10243	290	203	1.391	83.3	82.9	90.3	89.7	88.6	83.8	78.6	71.6	92.4	1.52
	11546	234	125	1.409	83.4	81.8	88.6	88.5	87.3	84.2	79.8	75.4	91.7	1.55
	12198	190	69	1.387	81.5	82.2	88.9	88.5	87.2	84.2	80.4	76.6	91.7	1.53
25°	10259	362	275	1.625	82.1	83.7	91.2	90.1	89.5	83.7	78.1	72.5	93.0	1.50
	11699	325	212	1.709	82.6	81.0	89.2	89.3	89.1	84.2	79.1	74.0	92.6	1.56
	13138	270	129	1.764	83.5	80.8	88.4	88.5	88.1	85.1	80.5	75.9	92.3	1.60
	13857	228	72	1.760	82.1	81.4	88.7	88.6	88.1	85.4	81.2	77.0	92.5	1.59
30°	11579	394	286	1.917	80.8	81.7	89.4	89.5	89.8	84.0	78.7	73.4	92.9	1.58
	13154	360	221	2.029	82.0	79.1	88.0	88.8	89.6	84.7	79.6	74.5	92.8	1.66
	14729	307	134	2.120	83.5	79.8	88.2	88.4	88.8	86.0	81.2	76.4	92.8	1.71
	15517	267	75	2.135	82.5	80.5	88.5	88.8	89.0	86.7	81.9	77.1	93.2	1.71
35°	12898	427	297	2.209	79.6	79.6	87.6	88.8	90.1	84.3	79.3	74.3	92.9	1.67
	14609	395	229	2.351	81.3	77.2	86.9	88.3	90.0	85.2	80.2	75.2	93.0	1.77
	16320	344	138	2.478	83.5	78.9	88.0	88.3	89.5	86.9	81.9	76.9	93.4	1.83
	17176	305	77	2.509	83.0	79.6	88.3	89.0	90.0	88.0	82.6	77.2	94.1	1.84

Performance shown is for installation type B - free inlet, ducted outlet. Performance ratings do not include the effects of appurtenances(accessories). Values shown are for inlet LwIA sound power levels for Installation type B: free inlet, ducted outlet. The sound power level ratings shown are in decibels, referred to as 10⁻¹² Watts, calculated per AMCA International Standard 301. The A-weighted sound ratings shown have been calculated per AMCA International Standard 301. dBA A-weighted sound pressure level is based on 11.5dB sound attenuation per octave band at 1.5m. dBA A-weighted sound pressure level are not licensed by AMCA International.

Model: YFIAM-560D6														
Hub Dia=306.9mm				Blade Num=12		RPM=960r/min							Density=1.2kg/m ³	
					(dB)									FEI
Deg	m³/h	Pa	Pa	kW	1	2	3	4	5	6	7	8	LwiA	Regulated
0°	3036	83	76	0.166	74.1	82.2	87.0	77.9	73.7	68.5	62.3	56.1	81.4	1.37
	3567	63	53	0.174	73.0	80.9	85.4	78.7	74.5	69.4	63.7	58.0	81.1	1.35
	4099	40	27	0.178	72.2	78.7	81.9	79.2	75.3	70.3	65.3	60.3	80.7	1.34
	4365	28	14	0.179	72.1	78.1	81.0	79.2	75.6	70.8	65.8	60.8	80.7	1.47
5°	3705	99	88	0.212	75.3	82.4	86.6	79.0	74.6	69.1	63.0	56.9	81.7	1.50
	4318	79	64	0.220	73.9	80.5	84.4	79.1	75.1	70.0	64.5	59.0	81.1	1.51
	4930	55	36	0.221	72.9	78.3	81.3	78.9	75.5	70.8	66.0	61.2	80.6	1.50
	5236	41	19	0.218	72.5	77.9	80.7	78.9	75.6	71.3	66.9	62.5	80.7	1.58
10°	4375	115	99	0.257	76.4	82.7	86.3	106.9	75.6	69.8	63.6	57.4	82.1	1.64
	5068	96	75	0.266	74.7	80.1	83.5	79.6	75.8	70.7	65.3	59.9	81.3	1.68
	5760	71	44	0.264	73.5	77.8	80.6	78.7	75.6	71.4	66.9	62.4	80.6	1.68
	6107	54	24	0.256	73.0	77.8	80.5	78.6	75.5	71.7	67.8	63.9	80.7	1.70
15°	5045	130	110	0.303	77.6	82.9	85.9	81.0	76.5	70.4	64.3	58.2	82.6	1.78
	5818	112	85	0.313	75.6	79.6	82.5	80.1	76.4	71.3	66.1	60.9	81.6	1.87
	6591	86	53	0.306	74.1	77.3	79.9	78.5	75.7	71.9	67.7	63.5	80.6	1.88
	6977	66	29	0.294	73.4	77.6	80.2	78.2	75.4	72.1	68.9	65.7	80.7	1.72
20°	5919	144	115	0.387	75.9	81.0	84.1	81.0	76.8	70.9	65.1	59.3	82.2	1.80
	6782	127	89	0.404	74.2	78.2	81.4	80.1	76.8	71.8	66.6	61.6	81.6	1.86
	7645	102	55	0.409	73.6	76.8	79.7	78.9	76.5	72.7	68.3	63.9	81.2	1.87
	8076	83	30	0.402	73.0	77.1	80.0	78.8	76.5	73.0	69.2	65.4	81.3	1.76
25°	6792	159	120	0.472	74.1	79.1	82.3	80.8	77.1	71.4	65.8	60.2	82.0	1.85
	7745	142	93	0.496	72.8	76.7	80.4	80.3	77.3	72.2	67.1	62.0	81.8	1.91
	8698	118	57	0.512	73.0	76.2	79.6	79.4	77.4	73.4	68.8	64.2	81.8	1.91
	9174	100	31	0.511	72.8	76.6	79.8	79.4	77.6	74.0	69.8	65.6	82.1	1.83
30°	7666	173	125	0.556	72.5	77.2	80.6	80.8	77.4	71.9	66.6	61.3	82.0	1.93
	8709	158	97	0.589	71.4	75.2	79.6	80.4	77.8	72.7	67.6	62.5	82.0	1.99
	9752	135	59	0.615	72.4	75.7	79.4	79.7	78.2	74.2	69.4	64.6	82.3	2.01
	10273	117	33	0.619	72.4	76.1	79.8	80.0	78.7	74.9	70.1	65.3	82.8	1.91
35°	8540	187	130	0.641	70.7	75.2	79.4	80.7	77.7	72.4	67.4	62.4	82.0	2.02
	9672	173	100	0.682	69.9	73.8	78.8	80.4	78.2	73.3	68.3	63.3	82.3	2.09
	10805	151	60	0.719	71.9	75.2	79.3	80.1	79.0	75.0	70.0	65.0	83.0	2.12
	11372	134	34	0.728	72.1	75.6	79.8	80.7	79.9	75.9	70.5	65.1	83.7	2.12

Performance shown is for installation type B - free inlet, ducted outlet. Performance ratings do not include the effects of appurtenances(accessories). Values shown are for inlet LwiA sound power levels for Installation type B: free inlet, ducted outlet. The sound power level ratings shown are in decibels, referred to as 10⁻¹² Watts , calculated per AMCA International Standard 301. The A-weighted sound ratings shown have been calculated per AMCA International Standard 301. dBA A-weighted sound pressure level is based on 11.5dB sound attenuation per octave band at 1.5m. dBA A-weighted sound pressure level are not licensed by AMCA International.

Model: YFIAM-630D4														
Hub Dia=345.4mm				Blade Num=12			RPM=1450r/min						Density=1.2kg/m ³	
					(dB)									FEI
Deg	m³/h	Pa	Pa	kW	1	2	3	4	5	6	7	8	LwiA	Regulated
0°	6536	241	220	1.034	83.9	88.4	99.5	93.3	88.5	84.7	78.5	72.3	95.4	
	7681	183	154	1.080	82.4	87.6	97.9	93.6	89.6	85.3	79.6	73.9	95.4	
	8826	116	78	1.105	81.3	87.0	94.4	93.0	90.8	85.8	80.8	75.8	95.1	
	9399	82	39	1.114	81.1	86.9	93.5	92.9	90.9	86.3	81.3	76.3	95.1	
5°	7978	286	253	1.316	85.3	89.4	99.1	93.8	89.9	85.3	79.2	73.1	95.8	1.17
	9296	229	185	1.369	84.1	87.9	96.9	93.6	90.3	85.8	80.3	74.8	95.5	1.15
	10614	160	103	1.374	83.2	86.8	93.8	92.7	90.6	86.2	81.4	76.6	95.0	1.10
	11273	118	54	1.355	82.3	86.8	93.2	92.6	90.6	86.4	82.0	77.6	95.0	1.05
10°	9421	331	286	1.601	86.7	90.4	98.8	106.9	91.2	86.0	79.8	73.6	96.4	1.26
	10912	276	216	1.658	85.9	88.1	96.0	93.7	91.1	86.4	81.0	75.6	95.7	1.27
	12403	205	128	1.641	85.1	86.6	93.1	92.5	90.4	86.6	82.1	77.6	94.9	1.26
	13148	155	69	1.594	83.5	86.8	93.0	92.3	90.3	86.5	82.6	78.7	94.8	1.22
15°	10863	376	319	1.888	88.2	91.4	98.4	94.9	92.6	86.6	80.5	74.4	97.0	1.38
	12527	323	247	1.945	87.5	88.4	95.0	93.8	91.8	86.9	81.7	76.5	96.0	1.42
	14191	250	153	1.907	87.0	86.3	92.4	92.2	90.2	86.9	82.7	78.5	94.8	1.46
	15023	192	84	1.832	84.7	86.7	92.7	91.9	89.9	86.5	83.3	80.1	94.7	1.43
20°	12744	417	334	2.410	86.9	89.4	96.6	94.3	92.9	86.9	81.1	75.3	96.7	1.39
	14602	367	257	2.512	86.9	86.5	93.9	93.3	92.2	87.4	82.2	76.6	96.0	1.44
	16460	296	158	2.543	87.0	85.4	92.2	92.1	90.9	87.8	83.4	79.0	95.3	1.46
	17389	240	87	2.504	85.1	85.8	92.5	92.1	90.8	87.8	84.0	80.2	95.3	1.43
25°	14625	458	348	2.935	85.7	87.3	94.8	93.7	93.1	87.3	81.7	76.1	96.6	1.43
	16677	411	268	3.086	86.2	84.6	92.8	92.9	92.7	87.8	82.7	77.6	96.2	1.48
	18728	342	164	3.184	87.1	84.4	92.0	92.1	91.7	88.7	84.1	79.5	95.9	1.51
	19754	289	91	3.178	85.7	85.0	92.3	92.2	91.7	89.0	84.8	80.6	96.1	1.49
30°	16506	500	362	3.461	84.4	85.3	93.0	93.1	93.4	87.6	82.3	77.0	96.5	1.48
	18751	455	279	3.663	85.6	82.7	91.6	92.4	93.2	88.3	83.2	78.1	96.4	1.61
	20997	389	169	3.828	87.1	83.4	91.8	92.0	92.4	89.6	84.8	80.0	96.4	1.65
	22119	338	94	3.854	86.1	84.1	92.1	92.4	92.6	90.3	85.5	80.7	96.8	1.64
35°	18387	541	377	3.989	83.2	83.2	91.2	92.4	93.7	87.9	82.9	77.9	96.5	1.62
	20826	500	290	4.244	84.9	80.8	90.5	91.9	93.6	88.8	83.8	78.8	96.6	1.72
	23265	435	174	4.475	87.1	82.5	91.6	91.9	93.1	90.5	85.5	80.5	97.0	1.78
	24485	386	98	4.531	86.6	83.2	91.9	92.6	93.6	91.6	86.2	80.8	97.7	1.78

Performance shown is for installation type B - free inlet, ducted outlet. Performance ratings do not include the effects of appurtenances(accessories). Values shown are for inlet LwIA sound power levels for Installation type B: free inlet, ducted outlet. The sound power level ratings shown are in decibels, referred to as 10⁻¹² Watts, calculated per AMCA International Standard 301. The A-weighted sound ratings shown have been calculated per AMCA International Standard 301. dBA A-weighted sound pressure level is based on 11.5dB sound attenuation per octave band at 1.5m. dBA A-weighted sound pressure level are not licensed by AMCA International.

Model: YFIAM-630D6														
Hub Dia=345.4mm				Blade Num=12				RPM=960r/min				Density=1.2kg/m³		
					(dB)									FEI
Deg	m³/h	Pa	Pa	kW	1	2	3	4	5	6	7	8	LwiA	Regulated
0°	4327	106	96	0.300	77.7	85.8	90.6	81.5	77.3	72.1	65.9	59.7	85.0	1.33
	5085	80	67	0.314	76.6	84.5	89.0	82.3	78.1	73.0	67.3	61.6	84.7	1.32
	5843	51	34	0.321	75.8	82.3	85.5	82.8	78.9	73.9	68.9	63.9	84.3	1.29
	6222	36	17	0.323	75.7	81.7	84.6	82.8	79.2	74.4	69.4	64.4	84.3	1.26
5°	5282	125	111	0.382	78.9	86.0	90.2	82.6	78.2	72.7	66.6	60.5	85.3	1.42
	6155	101	81	0.397	77.5	84.1	88.0	82.7	78.7	73.6	68.1	62.6	84.7	1.44
	7027	70	45	0.399	76.5	81.9	84.9	82.5	79.1	74.4	69.6	64.8	84.2	1.43
	7464	52	24	0.393	76.1	81.5	84.3	82.5	79.2	74.9	70.5	66.1	84.3	1.42
10°	6237	145	125	0.465	80.0	86.3	89.9	106.9	79.2	73.4	67.2	61.0	85.7	1.52
	7224	121	95	0.481	78.3	83.7	87.1	83.2	79.4	74.3	68.9	63.5	84.9	1.57
	8212	90	56	0.476	77.1	81.4	84.2	82.3	79.2	75.0	70.5	66.0	84.2	1.60
	8705	68	30	0.463	76.6	81.4	84.1	82.2	79.1	75.3	71.4	67.5	84.3	1.59
15°	7192	165	140	0.548	81.2	86.5	89.5	84.6	80.1	74.0	67.9	61.8	86.2	1.63
	8294	141	108	0.564	79.2	83.2	86.1	83.7	80.0	74.9	69.7	64.5	85.2	1.70
	9396	109	67	0.553	77.7	80.9	83.5	82.1	79.3	75.5	71.3	67.1	84.2	1.78
	9946	84	37	0.532	77.0	81.2	83.8	81.8	79.0	75.7	72.5	69.3	84.3	1.79
20°	8438	183	146	0.699	79.5	84.6	87.7	84.6	80.4	74.5	68.7	62.9	85.8	1.62
	9668	161	113	0.729	77.8	81.8	85.0	83.7	80.4	75.4	70.2	65.6	85.2	1.70
	10897	130	69	0.738	77.2	80.4	83.3	82.5	80.1	76.3	71.9	67.5	84.8	1.74
	11512	105	38	0.727	76.6	80.7	83.6	82.4	80.1	76.6	72.8	69.0	84.9	1.74
25°	9683	201	153	0.852	77.7	82.7	85.9	84.4	80.7	75.0	69.4	63.8	85.6	1.65
	11041	180	118	0.895	76.4	80.3	84.0	83.9	80.9	75.8	70.7	65.6	85.4	1.73
	12399	150	72	0.924	76.6	79.8	83.2	83.0	81.0	77.0	72.4	67.8	85.4	1.77
	13079	127	40	0.922	76.4	80.2	83.4	83.0	81.2	77.6	73.4	69.2	85.7	1.77
30°	10928	219	159	1.005	76.1	80.8	84.2	84.4	81.0	75.5	70.2	64.9	85.6	1.69
	12415	200	122	1.063	75.0	78.8	83.2	84.0	81.4	76.3	71.2	66.1	85.6	1.77
	13901	170	74	1.111	76.0	79.3	83.0	83.3	81.8	77.8	73.0	68.2	85.9	1.82
	14645	148	41	1.118	76.0	79.7	83.4	83.6	82.3	78.5	73.7	68.9	86.4	1.83
35°	12174	237	165	1.158	74.3	78.8	83.0	84.3	81.3	76.0	71.0	66.0	85.6	1.75
	13788	219	127	1.232	73.5	77.4	82.4	84.0	81.8	76.9	71.9	66.9	85.9	1.84
	15403	191	76	1.299	75.5	78.8	82.9	83.7	82.6	78.6	73.6	68.6	86.6	1.89
	16211	169	43	1.315	75.7	79.2	83.4	84.3	83.5	79.5	74.1	68.7	87.3	1.88

Performance shown is for installation type B - free inlet, ducted outlet. Performance ratings do not include the effects of appurtenances(accessories). Values shown are for inlet LwA sound power levels for Installation type B: free inlet, ducted outlet. The sound power level ratings shown are in decibels, referred to as 10⁻¹² Watts, calculated per AMCA International Standard 301. The A-weighted sound ratings shown have been calculated per AMCA International Standard 301. dBA A-weighted sound pressure level is based on 11.5dB sound attenuation per octave band at 1.5m. dBA A-weighted sound pressure level are not licensed by AMCA International.

Model: YFIAM-630D8														
Hub Dia=345.4mm				Blade Num=12				RPM=720r/min				Density=1.2kg/m³		
					(dB)									FEI
Deg	m³/h	Pa	Pa	kW	1	2	3	4	5	6	7	8	LwiA	Regulated
0°	3246	59	54	0.127	73.2	84.3	78.1	73.3	69.5	63.3	57.1	50.7	75.8	1.24
	3814	45	38	0.132	72.4	82.7	78.4	74.4	70.1	64.4	58.7	52.8	76.3	1.29
	4383	29	19	0.135	71.8	79.2	77.8	75.6	70.6	65.6	60.6	55.4	76.6	1.30
	4667	20	10	0.136	71.7	78.3	77.7	75.7	71.1	66.1	61.1	55.9	76.8	1.31
5°	3962	71	62	0.161	74.2	83.9	78.6	74.7	70.1	64.0	57.9	51.6	76.5	1.37
	4616	57	46	0.168	72.7	81.7	78.4	75.1	70.6	65.1	59.6	53.9	76.6	1.43
	5271	40	25	0.168	71.6	78.6	77.5	75.4	71.0	66.2	61.4	56.4	76.7	1.47
	5598	29	13	0.166	71.6	78.0	77.4	75.4	71.2	66.8	62.4	57.9	76.8	1.47
10°	4678	82	71	0.196	75.2	83.6	79.2	106.9	70.8	64.6	58.4	52.0	77.2	1.51
	5418	68	53	0.203	72.9	80.8	78.5	75.9	71.2	65.8	60.4	54.8	77.1	1.58
	6159	51	32	0.201	71.4	77.9	77.3	75.2	71.4	66.9	62.4	57.8	76.8	1.65
	6529	38	17	0.195	71.6	77.8	77.1	75.1	71.3	67.4	63.5	59.5	76.8	1.66
15°	5394	93	79	0.231	76.2	83.2	79.7	77.4	71.4	65.3	59.2	52.9	78.1	1.64
	6220	80	61	0.238	73.2	79.8	78.6	76.6	71.7	66.5	61.3	55.9	77.6	1.74
	7047	62	38	0.233	71.1	77.2	77.0	75.0	71.7	67.5	63.3	59.0	76.9	1.84
	7460	47	21	0.224	71.5	77.5	76.7	74.7	71.3	68.1	64.9	61.6	76.9	1.86
20°	6328	103	82	0.295	74.2	81.4	79.1	77.7	71.7	65.9	60.1	54.1	78.1	1.69
	7251	90	63	0.308	71.3	78.7	78.1	77.0	72.2	67.0	61.8	56.1	77.8	1.79
	8173	73	39	0.311	70.2	77.0	76.9	75.7	72.6	68.2	63.8	59.3	77.5	1.88
	8634	59	22	0.307	70.6	77.3	76.9	75.6	72.6	68.8	65.0	61.1	77.7	1.89
25°	7262	113	86	0.359	72.1	79.6	78.5	77.9	72.1	66.5	60.9	55.1	78.2	1.77
	8281	101	66	0.378	69.4	77.6	77.7	77.5	72.6	67.5	62.4	57.1	78.1	1.87
	9300	84	40	0.390	69.2	76.8	76.9	76.5	73.5	68.9	64.3	59.5	78.2	1.94
	9809	71	22	0.389	69.8	77.1	77.0	76.5	73.8	69.6	65.4	61.1	78.5	1.96
30°	8196	123	89	0.424	70.1	77.8	77.9	78.2	72.4	67.1	61.8	56.3	78.3	1.85
	9311	112	69	0.449	67.5	76.4	77.2	78.0	73.1	68.0	62.9	57.6	78.5	1.97
	10426	96	42	0.469	68.2	76.6	76.8	77.2	74.4	69.6	64.8	59.8	78.9	2.05
	10983	83	23	0.472	68.9	76.9	77.2	77.4	75.1	70.3	65.5	60.5	79.4	2.07
35°	9130	133	93	0.488	68.0	76.0	77.2	78.5	72.7	67.7	62.7	57.5	78.5	1.95
	10341	123	72	0.520	65.6	75.3	76.7	78.4	73.6	68.6	63.6	58.4	78.8	2.08
	11552	107	43	0.548	67.3	76.4	76.7	77.9	75.3	70.3	65.3	60.1	79.5	2.17
	12158	95	24	0.555	68.0	76.7	77.4	78.4	76.4	71.0	65.6	60.0	80.3	2.17

Performance shown is for installation type B - free inlet, ducted outlet. Performance ratings do not include the effects of appurtenances(accessories). Values shown are for inlet LwIA sound power levels for Installation type B: free inlet, ducted outlet. The sound power level ratings shown are in decibels, referred to as 10⁻¹² Watts , calculated per AMCA International Standard 301. The A-weighted sound ratings shown have been calculated per AMCA International Standard 301. dBA A-weighted sound pressure level is based on 11.5dB sound attenuation per octave band at 1.5m. dBA A-weighted sound pressure level are not licensed by AMCA International.

Model: YFIAM-710D4															
Hub Dia=388.9mm				Blade Num=12				RPM=1450r/min				Density=1.2kg/m ³			
					(dB)									FEI	
Deg	m³/h	Pa	Pa	kW	1	2	3	4	5	6	7	8	LwiA	Regulated	
0°	9326	305	279	1.870	87.5	92.0	103.1	96.9	92.1	88.3	82.1	75.9	99.0		
	10960	232	195	1.954	86.0	91.2	101.5	97.2	93.2	88.9	83.2	77.5	99.0		
	12593	147	99	1.998	84.9	90.6	98.0	96.6	94.4	89.4	84.4	79.4	98.7		
	13410	104	50	2.014	84.7	90.5	97.1	96.5	94.5	89.9	84.9	79.9	98.7		
5°	11384	362	321	2.380	88.9	93.0	102.7	97.4	93.5	88.9	82.8	76.7	99.4		
	13265	291	234	2.477	87.7	91.5	100.5	97.2	93.9	89.4	83.9	78.4	99.1		
	15145	203	131	2.484	86.8	90.4	97.4	96.3	94.2	89.8	85.0	80.2	98.6		
	16086	150	68	2.450	85.9	90.4	96.8	96.2	94.2	90.0	85.6	81.2	98.6		
10°	13442	420	363	2.896	90.3	94.0	102.4	106.9	94.8	89.6	83.4	77.2	100.0	1.18	
	15570	350	273	2.998	89.5	91.7	99.6	97.3	94.7	90.0	84.6	79.2	99.3	1.19	
	17697	260	162	2.968	88.7	90.2	96.7	96.1	94.0	90.2	85.7	81.2	98.5	1.17	
	18761	197	87	2.883	87.1	90.4	96.6	95.9	93.9	90.1	86.2	82.3	98.4	1.13	
15°	15500	477	405	3.414	91.8	95.0	102.0	98.5	96.2	90.2	84.1	78.0	100.6	1.29	
	17875	409	313	3.517	91.1	92.0	98.6	97.4	95.4	90.5	85.3	80.1	99.6	1.32	
	20249	316	194	3.448	90.6	89.9	96.0	95.8	93.8	90.5	86.3	82.1	98.4	1.35	
	21436	243	106	3.312	88.3	90.3	96.3	95.5	93.5	90.1	86.9	83.7	98.3	1.33	
20°	18184	529	423	4.359	90.5	93.0	100.2	97.9	96.5	90.5	84.7	78.9	100.3	1.34	
	20835	465	326	4.543	90.5	90.1	97.5	96.9	95.8	91.0	85.8	81.6	99.6	1.39	
	23486	375	201	4.600	90.6	89.0	95.8	95.7	94.5	91.4	87.0	82.6	98.9	1.41	
	24811	305	111	4.528	88.7	89.4	96.1	95.7	94.4	91.4	87.6	83.8	98.9	1.38	
25°	20868	581	441	5.307	89.3	90.9	98.4	97.3	96.7	90.9	85.3	79.7	100.2	1.39	
	23795	521	340	5.580	89.8	88.2	96.4	96.5	96.3	91.4	86.3	81.2	99.8	1.45	
	26722	434	208	5.758	90.7	88.0	95.6	95.7	95.3	92.3	87.7	83.1	99.5	1.47	
	28186	366	115	5.748	89.3	88.6	95.9	95.8	95.3	92.6	88.4	84.2	99.7	1.46	
30°	23552	633	459	6.260	88.0	88.9	96.6	96.7	97.0	91.2	85.9	80.6	100.1	1.46	
	26756	577	354	6.625	89.2	86.3	95.2	96.0	96.8	91.9	86.8	81.7	100.0	1.54	
	29959	493	214	6.923	90.7	87.0	95.4	95.6	96.0	93.2	88.4	83.6	100.0	1.57	
	31561	428	120	6.970	89.7	87.7	95.7	96.0	96.2	93.9	89.1	84.3	100.4	1.56	
35°	26236	685	478	7.214	86.8	86.8	94.8	96.0	97.3	91.5	86.5	81.5	100.1	1.55	
	29716	633	368	7.675	88.5	84.4	94.1	95.5	97.2	92.4	87.4	82.4	100.2	1.64	
	33196	551	221	8.092	90.7	86.1	95.2	95.5	96.7	94.1	89.1	84.1	100.6	1.73	
	34936	490	124	8.194	90.2	86.8	95.5	96.2	97.2	95.2	89.8	84.4	101.3	1.74	

Performance shown is for installation type B - free inlet, ducted outlet. Performance ratings do not include the effects of appurtenances(accessories). Values shown are for inlet LwiA sound power levels for Installation type B: free inlet, ducted outlet. The sound power level ratings shown are in decibels, referred to as 10⁻¹² Watts , calculated per AMCA International Standard 301. The A-weighted sound ratings shown have been calculated per AMCA International Standard 301. dBA A-weighted sound pressure level is based on 11.5dB sound attenuation per octave band at 1.5m. dBA A-weighted sound pressure level are not licensed by AMCA International.

Model: YFIAM-710D6															
Hub Dia=388.9mm				Blade Num=12				RPM=960r/min				Density=1.2kg/m³			
					(dB)									FEI	
Deg	m³/h	Pa	Pa	kW	1	2	3	4	5	6	7	8	LwIA	Regulated	
0°	6174	134	122	0.543	81.3	89.4	94.2	85.1	80.9	75.7	69.5	63.3	88.6	1.24	
	7256	102	85	0.567	80.2	88.1	92.6	85.9	81.7	76.6	70.9	65.2	88.3	1.23	
	8338	64	43	0.580	79.4	85.9	89.1	86.4	82.5	77.5	72.5	67.5	87.9	1.17	
	8879	45	22	0.584	79.3	85.3	88.2	86.4	82.8	78.0	73.0	68.0	87.9	1.13	
5°	7537	159	141	0.691	82.5	89.6	93.8	86.2	81.8	76.3	70.2	64.1	88.9	1.32	
	8782	127	103	0.719	81.1	87.7	91.6	86.3	82.3	77.2	71.7	66.2	88.3	1.33	
	10027	89	57	0.721	80.1	85.5	88.5	86.1	82.7	78.0	73.2	68.4	87.8	1.31	
	10650	66	30	0.711	79.7	85.1	87.9	86.1	82.8	78.5	74.1	69.7	87.9	1.28	
10°	8900	184	159	0.840	83.6	89.9	93.5	106.9	82.8	77.0	70.8	64.6	89.3	1.41	
	10308	153	120	0.870	81.9	87.3	90.7	86.8	83.0	77.9	72.5	67.1	88.5	1.44	
	11717	114	71	0.861	80.7	85.0	87.8	85.9	82.8	78.6	74.1	69.6	87.8	1.46	
	12421	86	38	0.837	80.2	85.0	87.7	85.8	82.7	78.9	75.0	71.1	87.9	1.44	
15°	10262	209	177	0.991	84.8	90.1	93.1	88.2	83.7	77.6	71.5	65.4	89.8	1.49	
	11834	179	137	1.021	82.8	86.8	89.7	87.3	83.6	78.5	73.3	68.1	88.8	1.56	
	13406	139	85	1.001	81.3	84.5	87.1	85.7	82.9	79.1	74.9	70.7	87.8	1.62	
	14192	107	47	0.961	80.6	84.8	87.4	85.4	82.6	79.3	76.1	72.9	87.9	1.63	
20°	12039	232	185	1.265	83.1	88.2	91.3	88.2	84.0	78.1	72.3	66.5	89.4	1.52	
	13794	204	143	1.318	81.4	85.4	88.6	87.3	84.0	79.0	73.8	69.6	88.8	1.59	
	15549	164	88	1.335	80.8	84.0	86.9	86.1	83.7	79.9	75.5	71.1	88.4	1.63	
	16427	134	48	1.314	80.2	84.3	87.2	86.0	83.7	80.2	76.4	72.6	88.5	1.62	
25°	13816	255	193	1.540	81.3	86.3	89.5	88.0	84.3	78.6	73.0	67.4	89.2	1.55	
	15754	228	149	1.619	80.0	83.9	87.6	87.5	84.5	79.4	74.3	69.2	89.0	1.62	
	17692	190	91	1.671	80.2	83.4	86.8	86.6	84.6	80.6	76.0	71.4	89.0	1.65	
	18661	161	50	1.668	80.0	83.8	87.0	86.6	84.8	81.2	77.0	72.8	89.3	1.65	
30°	15593	278	201	1.817	79.7	84.4	87.8	88.0	84.6	79.1	73.8	68.5	89.2	1.59	
	17714	253	155	1.923	78.6	82.4	86.8	87.6	85.0	79.9	74.8	69.7	89.2	1.72	
	19835	216	94	2.009	79.6	82.9	86.6	86.9	85.4	81.4	76.6	71.8	89.5	1.77	
	20896	188	52	2.023	79.6	83.3	87.0	87.2	85.9	82.1	77.3	72.5	90.0	1.77	
35°	17370	300	209	2.094	77.9	82.4	86.6	87.9	84.9	79.6	74.6	69.6	89.2	1.72	
	19674	278	161	2.227	77.1	81.0	86.0	87.6	85.4	80.5	75.5	70.5	89.5	1.82	
	21978	242	97	2.348	79.1	82.4	86.5	87.3	86.2	82.2	77.2	72.2	90.2	1.89	
	23130	215	54	2.378	79.3	82.8	87.0	87.9	87.1	83.1	77.7	72.3	90.9	79.4	

Performance shown is for installation type B - free inlet, ducted outlet. Performance ratings do not include the effects of appurtenances(accessories). Values shown are for inlet LwIA sound power levels for Installation type B: free inlet, ducted outlet. The sound power level ratings shown are in decibels, referred to as 10⁻¹² Watts, calculated per AMCA International Standard 301. The A-weighted sound ratings shown have been calculated per AMCA International Standard 301. dBA A-weighted sound pressure level is based on 11.5dB sound attenuation per octave band at 1.5m. dBA A-weighted sound pressure level are not licensed by AMCA International.

Model: YFIAM-710D8														
Hub Dia=388.9mm				Blade Num=12			RPM=720r/min					Density=1.2kg/m ³		
					(dB)									FEI
Deg	m³/h	Pa	Pa	kW	1	2	3	4	5	6	7	8	LwiA	Regulated
0°	4631	75	69	0.229	76.8	87.9	81.7	76.9	73.1	66.9	60.7	54.3	79.4	1.31
	5442	57	48	0.239	76.0	86.3	82.0	78.0	73.7	68.0	62.3	56.4	79.9	1.34
	6253	36	24	0.245	75.4	82.8	81.4	79.2	74.2	69.2	64.2	59.0	80.2	1.33
	6659	26	12	0.247	75.3	81.9	81.3	79.3	74.7	69.7	64.7	59.5	80.4	1.31
5°	5653	89	79	0.291	77.8	87.5	82.2	78.3	73.7	67.6	61.5	55.2	80.1	1.42
	6587	72	58	0.303	76.3	85.3	82.0	78.7	74.2	68.7	63.2	57.5	80.2	1.47
	7520	50	32	0.304	75.2	82.2	81.1	79.0	74.6	69.8	65.0	60.0	80.3	1.49
	7987	37	17	0.300	75.2	81.6	81.0	79.0	74.8	70.4	66.0	61.5	80.4	1.49
10°	6675	103	89	0.355	78.8	87.2	82.8	106.9	74.4	68.2	62.0	55.6	80.8	1.54
	7731	86	67	0.367	76.5	84.4	82.1	79.5	74.8	69.4	64.0	58.4	80.7	1.60
	8787	64	40	0.363	75.0	81.5	80.9	78.8	75.0	70.5	66.0	61.4	80.4	1.66
	9316	48	22	0.353	75.2	81.4	80.7	78.7	74.9	71.0	67.1	63.1	80.4	1.68
15°	7697	118	100	0.418	79.8	86.8	83.3	81.0	75.0	68.9	62.8	56.5	81.7	1.67
	8876	101	77	0.431	76.8	83.4	82.2	80.2	75.3	70.1	64.9	59.5	81.2	1.76
	10055	78	48	0.422	74.7	80.8	80.6	78.6	75.3	71.1	66.9	62.6	80.5	1.85
	10644	60	26	0.406	75.1	81.1	80.3	78.3	74.9	71.7	68.5	65.2	80.5	1.87
20°	9029	130	104	0.534	77.8	85.0	82.7	81.3	75.3	69.5	63.7	57.7	81.7	1.69
	10346	115	80	0.556	74.9	82.3	81.7	80.6	75.8	70.6	65.4	61.6	81.4	1.78
	11662	93	50	0.563	73.8	80.6	80.5	79.3	76.2	71.8	67.4	62.9	81.1	1.86
	12320	75	27	0.554	74.2	80.9	80.5	79.2	76.2	72.4	68.6	64.7	81.3	1.86
25°	10362	143	109	0.650	75.7	83.2	82.1	81.5	75.7	70.1	64.5	58.7	81.8	1.74
	11816	128	84	0.683	73.0	81.2	81.3	81.1	76.2	71.1	66.0	60.7	81.7	1.84
	13269	107	51	0.705	72.8	80.4	80.5	80.1	77.1	72.5	67.9	63.1	81.8	1.90
	13996	90	28	0.704	73.4	80.7	80.6	80.1	77.4	73.2	69.0	64.7	82.1	1.91
30°	11695	156	113	0.766	73.7	81.4	81.5	81.8	76.0	70.7	65.4	59.9	81.9	1.81
	13286	142	87	0.811	71.1	80.0	80.8	81.6	76.7	71.6	66.5	61.2	82.1	1.92
	14876	121	53	0.848	71.8	80.2	80.4	80.8	78.0	73.2	68.4	63.4	82.5	1.99
	15672	106	30	0.853	72.5	80.5	80.8	81.0	78.7	73.9	69.1	64.1	83.0	2.01
35°	13027	169	118	0.883	71.6	79.6	80.8	82.1	76.3	71.3	66.3	61.1	82.1	1.90
	14756	156	91	0.940	69.2	78.9	80.3	82.0	77.2	72.2	67.2	62.0	82.4	2.02
	16484	136	55	0.991	70.9	80.0	80.3	81.5	78.9	73.9	68.9	63.7	83.1	2.09
	17348	121	31	1.003	71.6	80.3	81.0	82.0	80.0	74.6	69.2	63.6	83.9	2.12

Performance shown is for installation type B - free inlet, ducted outlet. Performance ratings do not include the effects of appurtenances(accessories). Values shown are for inlet LwA sound power levels for Installation type B: free inlet, ducted outlet. The sound power level ratings shown are in decibels, referred to as 10⁻¹² Watts, calculated per AMCA International Standard 301. The A-weighted sound ratings shown have been calculated per AMCA International Standard 301. dBA A-weighted sound pressure level is based on 11.5dB sound attenuation per octave band at 1.5m. dBA A-weighted sound pressure level are not licensed by AMCA International.

Model: YFIAM-800D4														
Hub Dia=438.9mm				Blade Num=12		RPM=1450r/min						Density=1.2kg/m ³		
					(dB)									FEI
Deg	m³/h	Pa	Pa	kW	1	2	3	4	5	6	7	8	LwIA	Regulated
0°	13414	427	394	3.347	94.6	95.4	106.5	98.5	95.5	90.1	84.4	78.4	101.7	
	15649	324	281	3.529	94.0	96.0	107.9	99.9	97.0	91.0	85.0	79.0	103.1	
	17140	246	193	3.625	93.7	96.3	105.7	99.7	97.3	91.7	86.3	80.6	102.5	
	18630	161	99	3.678	93.3	96.7	103.4	99.3	97.7	92.3	87.7	82.3	102.1	
5°	16786	514	461	4.379	97.2	96.6	104.9	98.8	96.3	91.3	85.5	79.8	101.6	1.15
	19583	423	352	4.567	95.6	95.9	104.7	99.8	97.6	92.5	86.8	81.2	102.4	1.14
	21448	331	245	4.592	94.8	95.6	103.2	99.7	98.0	93.1	88.0	82.7	102.4	
	23313	229	127	4.534	94.6	95.8	102.1	99.4	98.1	93.4	89.0	84.1	102.3	
10°	20158	601	528	5.410	99.8	97.8	103.4	106.9	97.1	92.6	86.6	81.2	105.4	1.29
	23517	521	422	5.605	97.1	95.7	101.5	99.6	98.1	93.9	88.5	83.3	102.4	1.34
	25757	416	297	5.558	95.9	94.8	100.7	99.7	98.6	94.5	89.6	84.7	102.7	1.31
	27997	296	156	5.389	95.9	94.9	100.9	99.6	98.6	94.6	90.4	85.9	102.7	1.24
15°	22368	673	580	7.031	99.8	98.3	103.3	99.6	97.7	93.3	87.5	82.1	102.3	1.21
	26636	599	465	7.484	97.1	95.4	101.3	99.9	98.8	94.3	89.0	84.0	102.8	1.28
	29481	500	333	7.622	95.9	94.5	100.6	100.1	99.4	95.1	90.1	85.4	103.2	1.26
	32327	383	182	7.619	95.7	94.7	100.7	100.0	99.4	95.4	91.1	86.7	103.4	1.21
20°	24578	745	631	8.600	99.9	98.7	103.2	100.2	98.3	94.0	88.4	83.1	102.8	1.17
	29754	678	508	9.319	97.0	95.2	101.1	100.2	99.5	94.8	89.5	84.6	103.4	1.32
	33206	583	370	9.644	95.8	94.2	100.4	100.4	100.1	95.6	90.6	86.0	103.7	1.32
	36657	469	209	9.818	95.5	94.5	100.5	100.5	100.3	96.3	91.8	87.5	104.1	1.31
25°	26788	817	683	10.127	99.9	99.1	103.1	100.8	98.8	94.6	89.3	84.1	103.3	1.23
	32873	756	551	11.123	96.9	94.9	101.0	100.5	100.2	95.2	90.0	85.4	103.7	1.36
	36930	667	406	11.637	95.7	93.9	100.3	100.7	100.9	96.1	91.1	86.7	104.3	1.39
	40987	556	235	11.996	95.4	94.3	100.4	101.0	101.2	97.2	92.5	88.3	104.8	1.40
30°	28998	889	735	11.635	100.0	99.6	103.1	101.4	99.4	95.3	90.1	85.0	103.9	1.26
	35992	834	594	12.906	96.9	94.6	100.8	100.9	100.9	95.6	90.5	86.1	104.2	1.42
	40654	751	443	13.607	95.7	93.7	100.1	101.1	101.6	96.6	91.6	87.4	104.8	1.48
	45316	643	262	14.161	95.2	94.2	100.2	101.5	102.1	98.0	93.2	89.1	105.6	1.52
35°	31208	961	787	13.114	100.0	100.0	103.0	102.0	100.0	96.0	91.0	86.0	104.4	1.30
	39110	913	637	14.671	96.8	94.4	100.6	101.2	101.6	96.0	91.0	86.8	104.7	1.49
	44378	835	479	15.558	95.6	93.4	100.0	101.4	102.4	97.1	92.1	88.1	105.4	1.58
	49646	729	288	16.316	95.0	94.0	100.0	102.0	103.0	98.9	93.9	89.9	106.3	1.66

Performance shown is for installation type B - free inlet, ducted outlet. Performance ratings do not include the effects of appurtenances(accessories). Values shown are for inlet LwIA sound power levels for Installation type B: free inlet, ducted outlet. The sound power level ratings shown are in decibels, referred to as 10⁻¹² Watts, calculated per AMCA International Standard 301. The A-weighted sound ratings shown have been calculated per AMCA International Standard 301. dBA A-weighted sound pressure level is based on 11.5dB sound attenuation per octave band at 1.5m. dBA A-weighted sound pressure level are not licensed by AMCA International.

Model: YFIAM-800D6															
Hub Dia=438.9mm				Blade Num=12				RPM=960r/min				Density=1.2kg/m³			
					(dB)									FEI	
Deg	m³/h	Pa	Pa	kW	1	2	3	4	5	6	7	8	LwiA	Regulated	
0°	8881	187	173	0.971	86.1	92.7	97.5	87.7	83.3	77.7	71.8	65.8	91.5	1.23	
	10361	142	123	1.024	86.2	93.7	98.9	89.2	84.4	78.4	72.4	66.4	92.8	1.18	
	11348	108	85	1.052	86.3	92.6	96.7	89.3	84.9	79.5	73.9	68.3	91.9	1.11	
	12334	71	44	1.067	86.3	91.5	94.4	89.3	85.5	80.5	75.5	70.1	91.4		
5°	11113	225	202	1.271	87.8	92.3	95.9	88.3	84.4	78.9	73.1	67.4	91.2	1.33	
	12965	185	154	1.325	86.8	91.9	95.7	89.5	85.5	80.1	74.4	68.8	91.8	1.34	
	14200	145	107	1.333	86.3	90.9	94.2	89.7	86.1	81.0	75.8	70.5	91.7	1.30	
	15435	100	56	1.316	86.3	90.4	93.1	89.6	86.3	81.8	77.1	72.1	91.6	1.24	
10°	13346	263	231	1.570	89.6	92.0	94.4	106.9	85.4	80.0	74.4	69.0	91.2	1.44	
	15570	228	185	1.627	87.3	90.0	92.5	89.7	86.6	81.7	76.4	71.2	91.6	1.52	
	17053	182	130	1.613	86.2	89.1	91.7	90.0	87.1	82.6	77.7	72.8	91.9	1.50	
	18536	130	68	1.564	86.3	89.3	91.9	90.0	87.2	83.1	78.7	74.2	92.1	1.47	
15°	14809	295	254	2.040	89.9	92.1	94.3	89.5	86.1	80.8	75.3	69.9	91.6	1.37	
	17635	263	204	2.172	87.1	89.7	92.3	90.2	87.1	82.1	77.0	72.0	91.9	1.46	
	19519	219	146	2.212	86.1	89.0	91.6	90.7	87.8	83.1	78.3	73.6	92.4	1.45	
	21402	168	80	2.211	86.1	89.1	91.7	90.6	88.0	83.8	79.5	75.1	92.7	1.43	
20°	16272	326	277	2.496	90.2	92.3	94.2	90.1	86.7	81.6	76.2	70.9	92.1	1.34	
	19700	297	223	2.704	86.9	89.5	92.1	90.8	87.7	82.6	77.6	72.6	92.4	1.45	
	21984	256	162	2.799	85.8	88.7	91.4	91.2	88.4	83.6	78.8	74.2	92.9	1.46	
	24269	206	91	2.849	85.9	88.9	91.5	91.4	88.9	84.6	80.2	75.9	93.4	1.46	
25°	17736	358	300	2.939	90.4	92.4	94.1	90.6	87.3	82.4	77.2	72.0	92.5	1.33	
	21764	331	241	3.228	86.7	89.4	92.0	91.3	88.2	83.1	78.2	73.6	92.8	1.46	
	24450	292	178	3.377	85.6	88.5	91.5	91.8	89.0	84.1	79.5	75.1	93.4	1.50	
	27136	244	103	3.481	85.7	88.8	91.8	92.1	89.8	85.4	81.0	76.8	94.2	1.52	
30°	19199	390	322	3.376	90.8	92.6	94.1	91.2	87.9	83.2	78.0	72.9	93.1	1.34	
	23829	366	260	3.745	86.5	89.1	91.9	91.9	88.7	83.5	78.9	74.5	93.3	1.50	
	26916	329	194	3.949	85.5	88.3	91.7	92.4	89.6	84.6	80.1	75.9	94.0	1.56	
	30003	282	115	4.110	85.6	88.6	92.0	92.9	90.6	86.1	81.7	77.6	94.9	1.60	
35°	20662	421	345	3.806	91.0	92.7	94.0	91.8	88.6	84.0	79.0	74.0	93.6	1.36	
	25894	400	279	4.258	86.4	88.9	92.0	92.4	89.2	84.0	79.5	75.3	93.8	1.54	
	29382	366	210	4.515	85.3	88.1	91.8	93.0	90.2	85.1	80.7	76.7	94.5	1.74	
	32869	320	126	4.735	85.4	88.4	92.2	93.6	91.5	86.9	82.5	78.5	95.7	1.83	

Performance shown is for installation type B - free inlet, ducted outlet. Performance ratings do not include the effects of appurtenances(accessories). Values shown are for inlet LwiA sound power levels for Installation type B: free inlet, ducted outlet. The sound power level ratings shown are in decibels, referred to as 10⁻¹² Watts, calculated per AMCA International Standard 301. The A-weighted sound ratings shown have been calculated per AMCA International Standard 301. dBA A-weighted sound pressure level is based on 11.5dB sound attenuation per octave band at 1.5m. dBA A-weighted sound pressure level are not licensed by AMCA International.

Model: YFIAM-800D8															
Hub Dia=438.9mm				Blade Num=12				RPM=720r/min				Density=1.2kg/m³			
					(dB)									FEI	
Deg	m³/h	Pa	Pa	kW	1	2	3	4	5	6	7	8	LwIA	Regulated	
0°	6661	105	97	0.410	80.2	91.3	83.3	80.3	74.9	69.2	63.2	57.0	82.0	1.37	
	7771	80	69	0.432	80.8	92.7	84.7	81.8	75.8	69.8	63.8	57.6	83.3	1.36	
	8511	61	48	0.444	81.1	90.5	84.5	82.1	76.5	71.1	65.5	59.7	83.2	1.33	
	9251	40	24	0.450	81.5	88.2	84.1	82.5	77.1	72.5	67.1	61.5	83.4	1.27	
5°	8335	127	114	0.536	81.4	89.7	83.6	81.1	76.2	70.3	64.6	58.7	82.5	1.50	
	9724	104	87	0.559	80.7	89.5	84.6	82.4	77.3	71.6	66.0	60.2	83.5	1.55	
	10650	82	60	0.562	80.4	88.0	84.5	82.8	77.9	72.8	67.5	62.0	83.8	1.53	
	11576	56	31	0.555	80.6	86.9	84.2	82.9	78.2	73.9	68.9	63.7	84.0	1.50	
10°	10009	148	130	0.662	82.6	88.2	83.8	106.9	77.4	71.4	66.0	60.4	83.1	1.64	
	11678	128	104	0.686	80.5	86.3	84.4	82.9	78.7	73.3	68.1	62.7	84.0	1.74	
	12790	103	73	0.681	79.6	85.5	84.5	83.4	79.3	74.4	69.5	64.4	84.6	1.75	
	13902	73	38	0.660	79.7	85.7	84.4	83.4	79.4	75.2	70.7	66.1	84.8	1.75	
15°	11107	166	143	0.861	83.1	88.1	84.4	82.5	78.1	72.3	66.9	61.3	83.7	1.54	
	13226	148	115	0.916	80.2	86.1	84.7	83.6	79.1	73.8	68.8	63.6	84.5	1.65	
	14639	123	82	0.933	79.3	85.4	84.9	84.2	79.9	74.9	70.2	65.3	85.2	1.67	
	16052	94	45	0.933	79.5	85.5	84.8	84.2	80.2	75.9	71.5	67.0	85.5	1.67	
20°	12204	184	156	1.053	83.5	88.0	85.0	83.1	78.8	73.2	67.9	62.4	84.3	1.50	
	14775	167	125	1.141	80.0	85.9	85.0	84.3	79.6	74.3	69.5	64.6	85.1	1.63	
	16488	144	91	1.181	79.0	85.2	85.2	84.9	80.4	75.4	70.8	66.0	85.7	1.66	
	18202	116	51	1.202	79.3	85.3	85.3	85.1	81.1	76.6	72.3	67.9	86.3	1.68	
25°	13302	201	168	1.240	83.9	87.9	85.6	83.6	79.4	74.1	68.9	63.5	84.9	1.49	
	16323	186	136	1.362	79.7	85.8	85.3	85.0	80.0	74.8	70.2	65.4	85.6	1.64	
	18338	164	100	1.425	78.7	85.1	85.5	85.7	80.9	75.9	71.5	67.0	86.3	1.69	
	20352	137	58	1.469	79.1	85.2	85.8	86.0	82.0	77.3	73.1	68.8	87.1	1.72	
30°	14399	219	181	1.424	84.4	87.9	86.2	84.2	80.1	74.9	69.8	64.5	85.5	1.49	
	17872	206	146	1.580	79.4	85.6	85.7	85.7	80.4	75.3	70.9	66.4	86.1	1.66	
	20187	185	109	1.666	78.5	84.9	85.9	86.4	81.4	76.4	72.2	67.9	86.9	1.73	
	22502	158	65	1.734	79.0	85.0	86.3	86.9	82.8	78.0	73.9	69.7	87.9	1.80	
35°	15497	237	194	1.606	84.8	87.8	86.8	84.8	80.8	75.8	70.8	65.6	86.2	1.51	
	19420	225	157	1.796	79.2	85.4	86.0	86.4	80.8	75.8	71.6	67.3	86.7	1.70	
	22036	206	118	1.905	78.2	84.8	86.2	87.2	81.9	76.9	72.9	68.8	87.5	1.87	
	24652	180	71	1.998	78.8	84.8	86.8	87.8	83.7	78.7	74.7	70.6	88.7	1.97	

Performance shown is for installation type B - free inlet, ducted outlet. Performance ratings do not include the effects of appurtenances(accessories). Values shown are for inlet LwIA sound power levels for Installation type B: free inlet, ducted outlet. The sound power level ratings shown are in decibels, referred to as 10⁻¹² Watts , calculated per AMCA International Standard 301. The A-weighted sound ratings shown have been calculated per AMCA International Standard 301. dBA A-weighted sound pressure level is based on 11.5dB sound attenuation per octave band at 1.5m. dBA A-weighted sound pressure level are not licensed by AMCA International.

Model: YFIAM-900D4														
Hub Dia=493.9mm				Blade Num=12			RPM=1450r/min						Density=1.2kg/m ³	
					(dB)									FEI
Deg	m³/h	Pa	Pa	kW	1	2	3	4	5	6	7	8	LwiA	Regulated
0°	19115	540	500	6.040	98.2	99.0	110.1	102.1	99.1	93.7	88.0	82.0	105.3	
	22300	411	356	6.368	97.6	99.6	111.5	103.5	100.6	94.6	88.6	82.6	106.7	
	24424	311	244	6.541	97.3	99.9	109.3	103.3	100.9	95.3	89.9	84.3	106.1	
	26548	204	126	6.637	96.9	100.3	107.0	102.9	101.3	95.9	91.3	85.9	105.7	
5°	23920	650	584	7.901	100.8	100.2	108.5	102.4	99.9	95.0	89.1	83.4	105.3	1.11
	27906	535	445	8.241	99.2	99.5	108.3	103.4	101.2	96.1	90.4	84.8	106.0	
	30564	419	310	8.286	98.4	99.2	106.8	103.3	101.6	96.7	91.6	86.3	106.0	
	33222	290	161	8.181	98.2	99.4	105.7	103.0	101.7	97.0	92.7	87.7	105.9	
10°	28725	761	668	9.763	103.4	101.4	107.0	106.9	100.7	96.2	90.2	84.8	105.4	1.25
	33512	660	535	10.115	100.7	99.3	105.1	103.2	101.7	97.5	92.1	86.9	105.9	1.30
	36704	526	376	10.030	99.5	98.4	104.3	103.3	102.2	98.1	93.2	88.3	106.3	1.26
	39896	375	197	9.725	99.5	98.5	104.5	103.2	102.2	98.2	94.0	89.5	106.4	1.19
15°	31874	852	734	12.687	103.4	101.9	106.9	103.2	101.3	96.9	91.1	85.7	105.9	1.18
	37957	759	589	13.506	100.7	99.0	104.9	103.5	102.4	97.9	92.6	87.6	106.4	1.25
	42011	633	422	13.755	99.5	98.1	104.2	103.7	103.0	98.7	93.7	89.0	106.8	1.23
	46066	485	231	13.749	99.3	98.3	104.3	103.6	103.0	99.0	94.7	90.3	107.0	1.18
20°	35024	943	800	15.518	103.5	102.3	106.8	103.8	101.9	97.6	92.0	86.7	106.4	1.16
	42401	858	643	16.816	100.6	98.8	104.7	103.8	103.1	98.4	93.1	91.6	106.8	1.25
	47318	739	468	17.403	99.4	97.8	104.0	104.0	103.7	99.2	94.2	89.6	107.3	1.25
	52236	594	264	17.717	99.1	98.1	104.1	104.1	103.9	99.9	95.4	91.1	107.7	1.23
25°	38173	1034	865	18.276	103.5	102.7	106.7	104.4	102.4	98.2	92.9	87.7	106.9	1.16
	46845	957	698	20.072	100.5	98.5	104.6	104.1	103.8	98.8	93.6	89.0	107.3	1.27
	52626	845	514	20.999	99.3	97.5	103.9	104.3	104.5	99.7	94.7	90.3	107.9	1.29
	58407	704	298	21.648	99.0	97.9	104.0	104.6	104.8	100.8	96.1	91.9	108.4	1.30
30°	41323	1126	931	20.995	103.6	103.2	106.7	105.0	103.0	98.9	93.7	88.6	107.5	1.17
	51289	1057	752	23.289	100.5	98.2	104.4	104.5	104.5	99.2	94.1	89.7	107.8	1.40
	57933	951	561	24.554	99.3	97.3	103.7	104.7	105.2	100.2	95.2	91.0	108.4	1.46
	64577	814	331	25.554	98.8	97.8	103.8	105.1	105.7	101.6	96.8	92.7	109.2	1.51
35°	44473	1217	997	23.665	103.6	103.6	106.6	105.6	103.6	99.6	94.6	89.6	108.0	1.28
	55733	1156	806	26.474	100.4	98.0	104.2	104.8	105.2	99.6	94.6	90.4	108.3	1.48
	63240	1057	607	28.076	99.2	97.0	103.6	105.0	106.0	100.7	95.7	91.7	109.0	1.57
	70747	924	365	29.443	98.6	97.6	103.6	105.6	106.6	102.5	97.5	93.5	109.9	1.65

Performance shown is for installation type B - free inlet, ducted outlet. Performance ratings do not include the effects of appurtenances(accessories). Values shown are for inlet LwIA sound power levels for Installation type B: free inlet, ducted outlet. The sound power level ratings shown are in decibels, referred to as 10⁻¹² Watts , calculated per AMCA International Standard 301. The A-weighted sound ratings shown have been calculated per AMCA International Standard 301. dBA A-weighted sound pressure level is based on 11.5dB sound attenuation per octave band at 1.5m. dBA A-weighted sound pressure level are not licensed by AMCA International.

Model: YFIAM-900D6														
Hub Dia=493.9mm				Blade Num=12				RPM=960r/min				Density=1.2kg/m³		
					(dB)									FEI
Deg	m³/h	Pa	Pa	kW	1	2	3	4	5	6	7	8	LwiA	Regulated
0°	12655	237	219	1.753	89.7	96.3	101.1	91.3	86.9	81.3	75.4	69.4	95.1	1.13
	14764	180	156	1.848	89.8	97.3	102.5	92.8	88.0	82.0	76.0	70.0	96.4	
	16171	136	107	1.898	89.9	96.2	100.3	92.9	88.5	83.1	77.5	71.9	95.5	
	17577	90	55	1.926	89.9	95.1	98.0	92.9	89.1	84.1	79.1	73.7	95.0	
5°	15837	285	256	2.293	91.4	95.9	99.5	91.9	88.0	82.5	76.7	71.0	94.8	1.25
	18476	235	195	2.392	90.4	95.5	99.3	93.1	89.1	83.7	78.0	72.4	95.4	1.25
	20236	184	136	2.405	89.9	94.5	97.8	93.3	89.7	84.6	79.4	74.1	95.3	1.20
	21995	127	71	2.374	89.9	94.0	96.7	93.2	89.9	85.4	80.7	75.7	95.2	1.13
10°	19018	333	293	2.833	93.2	95.6	98.0	106.9	89.0	83.6	78.0	72.6	94.8	1.37
	22188	289	234	2.935	90.9	93.6	96.1	93.3	90.2	85.3	80.0	74.8	95.2	1.43
	24301	231	165	2.911	89.8	92.7	95.3	93.6	90.7	86.2	81.3	76.4	95.5	1.41
	26414	164	86	2.822	89.9	92.9	95.5	93.6	90.8	86.7	82.3	77.8	95.7	1.37
15°	21103	373	322	3.682	93.5	95.7	97.9	93.1	89.7	84.4	78.9	73.5	95.2	1.26
	25130	333	258	3.920	90.7	93.3	95.9	93.8	90.7	85.7	80.6	75.6	95.5	1.40
	27814	277	185	3.992	89.7	92.6	95.2	94.3	91.4	86.7	81.9	77.2	96.0	1.39
	30499	212	101	3.990	89.7	92.7	95.3	94.2	91.6	87.4	83.1	78.7	96.3	1.36
20°	23188	413	351	4.504	93.8	95.9	97.8	93.7	90.3	85.2	79.8	74.5	95.7	1.29
	28072	376	282	4.880	90.5	93.1	95.7	94.4	91.3	86.2	81.2	76.1	96.0	1.40
	31328	324	205	5.050	89.4	92.3	95.0	94.8	92.0	87.2	82.4	77.8	96.5	1.41
	34584	261	116	5.142	89.5	92.5	95.1	95.0	92.5	88.2	83.8	79.5	97.0	1.41
25°	25273	453	379	5.304	94.0	96.0	97.7	94.2	90.9	86.0	80.8	75.6	96.1	1.30
	31014	420	306	5.825	90.3	93.0	95.6	94.9	91.8	86.7	81.8	77.2	96.4	1.43
	34842	370	225	6.094	89.2	92.1	95.1	95.4	92.6	87.7	83.1	78.7	97.0	1.47
	38669	309	131	6.282	89.3	92.4	95.4	95.7	93.4	89.0	84.6	80.4	97.8	1.50
30°	27359	493	408	6.093	94.4	96.2	97.7	94.8	91.5	86.8	81.6	76.5	96.7	1.32
	33957	463	330	6.759	90.1	92.7	95.5	95.5	92.3	87.1	82.5	78.1	96.9	1.49
	38356	417	246	7.126	89.1	91.9	95.3	96.0	93.2	88.2	83.7	79.5	97.6	1.55
	42754	357	145	7.416	89.2	92.2	95.6	96.5	94.2	89.7	85.3	81.2	98.5	1.60
35°	29444	533	437	6.868	94.6	96.3	97.6	95.4	92.2	87.6	82.6	77.6	97.2	1.35
	36899	507	353	7.683	90.0	92.5	95.6	96.0	92.8	87.6	83.1	78.9	97.4	1.55
	41869	463	266	8.148	88.9	91.7	95.4	96.6	93.8	88.7	84.3	80.3	98.1	1.64
	46839	405	160	8.544	89.0	92.0	95.8	97.2	95.1	90.5	86.1	82.1	99.3	1.72

Performance shown is for installation type B - free inlet, ducted outlet. Performance ratings do not include the effects of appurtenances(accessories). Values shown are for inlet LwiA sound power levels for Installation type B: free inlet, ducted outlet. The sound power level ratings shown are in decibels, referred to as 10⁻¹² Watts , calculated per AMCA International Standard 301. The A-weighted sound ratings shown have been calculated per AMCA International Standard 301. dBA A-weighted sound pressure level is based on 11.5dB sound attenuation per octave band at 1.5m. dBA A-weighted sound pressure level are not licensed by AMCA International.

Model: YFIAM-900D8														
Hub Dia=493.9mm				Blade Num=12				RPM=720r/min				Density=1.2kg/m ³		
Deg	m ³ /h	Pa	Pa	kW	1	2	3	4	5	6	7	8	LwA	FEI Regulated
0°	9491	133	123	0.739	83.8	94.9	86.9	83.9	78.5	72.8	66.8	60.6	85.6	1.32
	11073	101	88	0.780	84.4	96.3	88.3	85.4	79.4	73.4	67.4	61.2	86.9	1.29
	12128	77	60	0.801	84.7	94.1	88.1	85.7	80.1	74.7	69.1	63.3	86.8	1.23
	13182	50	31	0.813	85.1	91.8	87.7	86.1	80.7	76.1	70.7	65.1	87.0	1.17
5°	11877	160	144	0.967	85.0	93.3	87.2	84.7	79.8	73.9	68.2	62.3	86.1	1.42
	13857	132	110	1.009	84.3	93.1	88.2	86.0	80.9	75.2	69.6	63.8	87.1	1.45
	15177	103	76	1.014	84.0	91.6	88.1	86.4	81.5	76.4	71.1	65.6	87.4	1.42
	16496	71	40	1.002	84.2	90.5	87.8	86.5	81.8	77.5	72.5	67.3	87.6	1.38
10°	14263	188	165	1.195	86.2	91.8	87.4	106.9	81.0	75.0	69.6	64.0	86.7	1.54
	16641	163	132	1.238	84.1	89.9	88.0	86.5	82.3	76.9	71.7	66.3	87.6	1.63
	18225	130	93	1.228	83.2	89.1	88.1	87.0	82.9	78.0	73.1	68.0	88.2	1.63
	19810	92	49	1.191	83.3	89.3	88.0	87.0	83.0	78.8	74.3	69.7	88.4	1.62
15°	15827	210	181	1.553	86.7	91.7	88.0	86.1	81.7	75.9	70.5	64.9	87.3	1.42
	18847	187	145	1.654	83.8	89.7	88.3	87.2	82.7	77.4	72.4	67.2	88.1	1.51
	20861	156	104	1.684	82.9	89.0	88.5	87.8	83.5	78.5	73.8	68.9	88.8	1.52
	22874	120	57	1.683	83.1	89.1	88.4	87.8	83.8	79.5	75.1	70.6	89.1	1.51
20°	17391	233	197	1.900	87.1	91.6	88.6	86.7	82.4	76.8	71.5	66.0	87.9	1.35
	21054	212	159	2.059	83.6	89.5	88.6	87.9	83.2	77.9	73.1	68.7	88.7	1.53
	23496	182	115	2.131	82.6	88.8	88.8	88.5	84.0	79.0	74.4	69.6	89.3	1.55
	25938	147	65	2.169	82.9	88.9	88.9	88.7	84.7	80.2	75.9	71.5	89.9	1.57
25°	18955	255	213	2.237	87.5	91.5	89.2	87.2	83.0	77.7	72.5	67.1	88.5	1.40
	23261	236	172	2.457	83.3	89.4	88.9	88.6	83.6	78.4	73.8	69.0	89.2	1.55
	26131	208	127	2.571	82.3	88.7	89.1	89.3	84.5	79.5	75.1	70.6	89.9	1.60
	29002	174	73	2.650	82.7	88.8	89.4	89.6	85.6	80.9	76.7	72.4	90.7	1.63
30°	20519	278	230	2.570	88.0	91.5	89.8	87.8	83.7	78.5	73.4	68.1	89.1	1.42
	25468	261	185	2.851	83.0	89.2	89.3	89.3	84.0	78.9	74.5	70.0	89.7	1.59
	28767	234	138	3.006	82.1	88.5	89.5	90.0	85.0	80.0	75.8	71.5	90.5	1.66
	32066	201	82	3.129	82.6	88.6	89.9	90.5	86.4	81.6	77.5	73.3	91.5	1.72
35°	22083	300	246	2.897	88.4	91.4	90.4	88.4	84.4	79.4	74.4	69.2	89.8	1.45
	27674	285	199	3.241	82.8	89.0	89.6	90.0	84.4	79.4	75.2	70.9	90.3	1.64
	31402	261	150	3.437	81.8	88.4	89.8	90.8	85.5	80.5	76.5	72.4	91.1	1.74
	35130	228	90	3.605	82.4	88.4	90.4	91.4	87.3	82.3	78.3	74.2	92.3	1.82

Performance shown is for installation type B - free inlet, ducted outlet. Performance ratings do not include the effects of appurtenances(accessories). Values shown are for inlet LwA sound power levels for Installation type B: free inlet, ducted outlet. The sound power level ratings shown are in decibels, referred to as 10⁻¹² Watts, calculated per AMCA International Standard 301. The A-weighted sound ratings shown have been calculated per AMCA International Standard 301. dBA A-weighted sound pressure level is based on 11.5dB sound attenuation per octave band at 1.5m. dBA A-weighted sound pressure level are not licensed by AMCA International.

Model: YFIAM-1000D4													FEG71	
Hub Dia=548.9mm					Blade Num=12			RPM=1450r/min				Density=1.2kg/m ³		
					dBA									FEI
Deg	m³/h	Pa	Pa	kW	1	2	3	4	5	6	7	8	LwIA	Regulated
0°	26238	667	617	10.240	101.4	102.2	113.3	105.3	102.3	96.9	91.2	85.2	108.5	0.94
	30611	507	439	10.796	100.8	102.8	114.7	106.7	103.8	97.8	91.8	85.8	109.9	0.86
	33526	384	302	11.090	100.5	103.1	112.5	106.5	104.1	98.5	93.1	87.5	109.3	0.77
	36441	252	155	11.252	100.1	103.5	110.2	106.1	104.5	99.1	94.5	89.1	108.9	0.66
5°	32834	803	721	13.396	104.0	103.4	111.7	105.6	103.1	98.2	92.3	86.6	108.5	1.06
	38306	661	550	13.972	102.4	102.7	111.5	106.6	104.4	99.3	93.6	88.0	109.2	1.05
	41954	517	383	14.048	101.6	102.4	110.0	106.5	104.8	99.9	94.8	89.5	109.2	0.97
	45602	358	199	13.870	101.4	102.6	108.9	106.2	104.9	100.2	95.9	90.9	109.1	0.88
10°	39430	939	825	16.553	106.6	104.6	110.2	106.9	103.9	99.4	93.4	88.0	108.6	1.23
	46001	815	660	17.149	103.9	102.5	108.3	106.4	104.9	100.7	95.3	90.1	109.1	1.28
	50382	650	464	17.006	102.7	101.6	107.5	106.5	105.4	101.3	96.4	91.5	109.5	1.23
	54763	463	243	16.488	102.7	101.7	107.7	106.4	105.4	101.4	97.2	92.7	109.6	1.15
15°	43753	1052	907	21.509	106.6	105.1	110.1	106.4	104.5	100.1	94.3	88.9	109.1	1.17
	52101	937	727	22.898	103.9	102.2	108.1	106.7	105.6	101.1	95.8	90.8	109.6	1.23
	57667	781	521	23.320	102.7	101.3	107.4	106.9	106.2	101.9	96.9	92.2	110.0	1.21
	63233	599	285	23.311	102.5	101.5	107.5	106.8	106.2	102.2	97.9	93.5	110.2	1.16
20°	48076	1165	988	26.309	106.7	105.5	110.0	107.0	105.1	100.8	95.2	89.9	109.6	1.15
	58202	1060	795	28.510	103.8	102.0	107.9	107.0	106.3	101.6	96.3	91.6	110.0	1.24
	64952	912	578	29.504	102.6	101.0	107.2	107.2	106.9	102.4	97.4	92.8	110.5	1.24
	71703	734	326	30.038	102.3	101.3	107.3	107.3	107.1	103.1	98.6	94.3	110.9	1.22
25°	52399	1278	1069	30.984	106.7	105.9	109.9	107.6	105.6	101.4	96.1	90.9	110.1	1.16
	64302	1182	862	34.029	103.7	101.7	107.8	107.3	107.0	102.0	96.8	92.2	110.5	1.28
	72237	1043	635	35.602	102.5	100.7	107.1	107.5	107.7	102.9	97.9	93.5	111.1	1.31
	80172	870	368	36.702	102.2	101.1	107.2	107.8	108.0	104.0	99.3	95.1	111.6	1.31
30°	56722	1390	1150	35.595	106.8	106.4	109.9	108.2	106.2	102.1	96.9	91.8	110.7	1.18
	70402	1305	929	39.484	103.7	101.4	107.6	107.7	107.7	102.4	97.3	92.9	111.0	1.33
	79522	1174	692	41.628	102.5	100.5	106.9	107.9	108.4	103.4	98.4	94.2	111.6	1.45
	88642	1005	409	43.325	102.0	101.0	107.0	108.3	108.9	104.8	100.0	95.9	112.4	1.49
35°	61046	1503	1231	40.121	106.8	106.8	109.8	108.8	106.8	102.8	97.8	92.8	111.2	1.27
	76502	1428	996	44.884	103.6	101.2	107.4	108.0	108.4	102.8	97.8	93.6	111.5	1.47
	86807	1305	749	47.600	102.4	100.2	106.8	108.2	109.2	103.9	98.9	94.9	112.2	1.57
	97112	1141	451	49.917	101.8	100.8	106.8	108.8	109.8	105.7	100.7	96.7	113.1	1.65

Performance shown is for installation type B - free inlet, ducted outlet. Performance ratings do not include the effects of appurtenances(accessories). Values shown are for inlet LwA sound power levels for Installation type B: free inlet, ducted outlet. The sound power level ratings shown are in decibels, referred to as 10⁻¹² Watts, calculated per AMCA International Standard 301. The A-weighted sound ratings shown have been calculated per AMCA International Standard 301. dBA A-weighted sound pressure level is based on 11.5dB sound attenuation per octave band at 1.5m. dBA A-weighted sound pressure level are not licensed by AMCA International.

Model: YFIAM-1000D6														
Hub Dia=548.9mm				Blade Num=12				RPM=960r/min				Density=1.2kg/m³		
					dBA									FEI
Deg	m³/h	Pa	Pa	kW	1	2	3	4	5	6	7	8	LwiA	Regulated
0°	17371	292	270	2.972	92.9	99.5	104.3	94.5	90.1	84.5	78.6	72.6	98.3	1.06
	20266	222	193	3.133	93.0	100.5	105.7	96.0	91.2	85.2	79.2	73.2	99.6	0.99
	22197	168	132	3.218	93.1	99.4	103.5	96.1	91.7	86.3	80.7	75.1	98.7	0.91
	24127	111	68	3.265	93.1	98.3	101.2	96.1	92.3	87.3	82.3	76.9	98.2	0.81
5°	21738	352	316	3.888	94.6	99.1	102.7	95.1	91.2	85.7	79.9	74.2	98.0	1.20
	25361	290	241	4.055	93.6	98.7	102.5	96.3	92.3	86.9	81.2	75.6	98.6	1.20
	27777	227	168	4.077	93.1	97.7	101.0	96.5	92.9	87.8	82.6	77.3	98.5	1.14
	30192	157	87	4.025	93.1	97.2	99.9	96.4	93.1	88.6	83.9	78.9	98.4	1.06
10°	26105	412	362	4.804	96.4	98.8	101.2	106.9	92.2	86.8	81.2	75.8	98.0	1.34
	30456	357	289	4.977	94.1	96.8	99.3	96.5	93.4	88.5	83.2	78.0	98.4	1.40
	33356	285	203	4.935	93.0	95.9	98.5	96.8	93.9	89.4	84.5	79.6	98.7	1.37
	36257	203	107	4.785	93.1	96.1	98.7	96.8	94.0	89.9	85.5	81.0	98.9	1.32
15°	28967	461	397	6.242	96.7	98.9	101.1	96.3	92.9	87.6	82.1	76.7	98.4	1.25
	34495	411	319	6.645	93.9	96.5	99.1	97.0	93.9	88.9	83.8	78.8	98.7	1.33
	38180	342	228	6.768	92.9	95.8	98.4	97.5	94.6	89.9	85.1	80.4	99.2	1.32
	41865	262	125	6.765	92.9	95.9	98.5	97.4	94.8	90.6	86.3	81.9	99.5	1.28
20°	31830	511	433	7.635	97.0	99.1	101.0	96.9	93.5	88.4	83.0	77.7	98.9	1.22
	38534	465	348	8.274	93.7	96.3	98.9	97.6	94.5	89.4	84.4	79.6	99.2	1.32
	43003	400	253	8.562	92.6	95.5	98.2	98.0	95.2	90.4	85.6	81.0	99.7	1.32
	47472	322	143	8.717	92.7	95.7	98.3	98.2	95.7	91.4	87.0	82.7	100.2	1.36
25°	34692	560	468	8.992	97.2	99.2	100.9	97.4	94.1	89.2	84.0	78.8	99.3	1.26
	42572	518	378	9.876	93.5	96.2	98.8	98.1	95.0	89.9	85.0	80.4	99.6	1.40
	47826	457	278	10.332	92.4	95.3	98.3	98.6	95.8	90.9	86.3	81.9	100.2	1.44
	53080	381	161	10.651	92.5	95.6	98.6	98.9	96.6	92.2	87.8	83.6	101.0	1.46
30°	37554	609	504	10.330	97.6	99.4	100.9	98.0	94.7	90.0	84.8	79.7	99.9	1.29
	46611	572	407	11.459	93.3	95.9	98.7	98.7	95.5	90.3	85.7	81.3	100.1	1.46
	52649	515	303	12.081	92.3	95.1	98.5	99.2	96.4	91.4	86.9	82.7	100.8	1.53
	58687	441	179	12.573	92.4	95.4	98.8	99.7	97.4	92.9	88.5	84.4	101.7	1.58
35°	40416	659	540	11.643	97.8	99.5	100.8	98.6	95.4	90.8	85.8	80.8	100.4	1.33
	50650	626	436	13.026	93.2	95.7	98.8	99.2	96.0	90.8	86.3	82.1	100.6	1.53
	57472	572	328	13.814	92.1	94.9	98.6	99.8	97.0	91.9	87.5	83.5	101.3	1.63
	64295	500	198	14.486	92.2	95.2	99.0	100.4	98.3	93.7	89.3	85.3	102.5	1.71

Performance shown is for installation type B - free inlet, ducted outlet. Performance ratings do not include the effects of appurtenances(accessories). Values shown are for inlet LwiA sound power levels for Installation type B: free inlet, ducted outlet. The sound power level ratings shown are in decibels, referred to as 10⁻¹² Watts, calculated per AMCA International Standard 301. The A-weighted sound ratings shown have been calculated per AMCA International Standard 301. dBA A-weighted sound pressure level is based on 11.5dB sound attenuation per octave band at 1.5m. dBA A-weighted sound pressure level are not licensed by AMCA International.

Model: YFIAM-1000D8														
Hub Dia=548.9mm				Blade Num=12				RPM=720r/min				Density=1.2kg/m³		
					(dB)									FEI
Deg	m³/h	Pa	Pa	kW	1	2	3	4	5	6	7	8	LwiA	Regulated
0°	13028	164	152	1.254	87.0	98.1	90.1	87.1	81.7	76.0	70.0	63.8	88.8	1.22
	15200	125	108	1.322	87.6	99.5	91.5	88.6	82.6	76.6	70.6	64.4	90.1	1.18
	16647	95	74	1.358	87.9	97.3	91.3	88.9	83.3	77.9	72.3	66.5	90.0	1.11
	18095	62	38	1.378	88.3	95.0	90.9	89.3	83.9	79.3	73.9	68.3	90.2	1.04
5°	16304	198	178	1.640	88.2	96.5	90.4	87.9	83.0	77.1	71.4	65.5	89.3	1.30
	19021	163	136	1.711	87.5	96.3	91.4	89.2	84.1	78.4	72.8	67.0	90.3	1.32
	20832	128	94	1.720	87.2	94.8	91.3	89.6	84.7	79.6	74.3	68.8	90.6	1.28
	22644	88	49	1.698	87.4	93.7	91.0	89.7	85.0	80.7	75.7	70.5	90.8	1.23
10°	19579	232	204	2.027	89.4	95.0	90.6	106.9	84.2	78.2	72.8	67.2	89.9	1.46
	22842	201	163	2.100	87.3	93.1	91.2	89.7	85.5	80.1	74.9	69.5	90.8	1.54
	25017	160	114	2.082	86.4	92.3	91.3	90.2	86.1	81.2	76.3	71.2	91.4	1.53
	27193	114	60	2.019	86.5	92.5	91.2	90.2	86.2	82.0	77.5	72.9	91.6	1.50
15°	21726	259	224	2.633	89.9	94.9	91.2	89.3	84.9	79.1	73.7	68.1	90.5	1.36
	25871	231	179	2.803	87.0	92.9	91.5	90.4	85.9	80.6	75.6	70.4	91.3	1.45
	28635	193	128	2.855	86.1	92.2	91.7	91.0	86.7	81.7	77.0	72.1	92.0	1.45
	31398	148	70	2.854	86.3	92.3	91.6	91.0	87.0	82.7	78.3	73.8	92.3	1.43
20°	23872	287	244	3.221	90.3	94.8	91.8	89.9	85.6	80.0	74.7	69.2	91.1	1.32
	28900	261	196	3.490	86.8	92.7	91.8	91.1	86.4	81.1	76.3	71.6	91.9	1.42
	32252	225	143	3.612	85.8	92.0	92.0	91.7	87.2	82.2	77.6	72.8	92.5	1.50
	35604	181	80	3.678	86.1	92.1	92.1	91.9	87.9	83.4	79.1	74.7	93.1	1.50
25°	26019	315	264	3.793	90.7	94.7	92.4	90.4	86.2	80.9	75.7	70.3	91.7	1.36
	31929	292	212	4.166	86.5	92.6	92.1	91.8	86.8	81.6	77.0	72.2	92.4	1.50
	35869	257	157	4.359	85.5	91.9	92.3	92.5	87.7	82.7	78.3	73.8	93.1	1.55
	39810	214	91	4.493	85.9	92.0	92.6	92.8	88.8	84.1	79.9	75.6	93.9	1.58
30°	28166	343	284	4.358	91.2	94.7	93.0	91.0	86.9	81.7	76.6	71.3	92.3	1.38
	34958	322	229	4.834	86.2	92.4	92.5	92.5	87.2	82.1	77.7	73.2	92.9	1.56
	39487	290	171	5.097	85.3	91.7	92.7	93.2	88.2	83.2	79.0	74.7	93.7	1.63
	44015	248	101	5.304	85.8	91.8	93.1	93.7	89.6	84.8	80.7	76.5	94.7	1.69
35°	30312	371	304	4.912	91.6	94.6	93.6	91.6	87.6	82.6	77.6	72.4	93.0	1.42
	37987	352	246	5.495	86.0	92.2	92.8	93.2	87.6	82.6	78.4	74.1	93.5	1.63
	43104	322	185	5.828	85.0	91.6	93.0	94.0	88.7	83.7	79.7	75.6	94.3	1.73
	48221	281	111	6.111	85.6	91.6	93.6	94.6	90.5	85.5	81.5	77.4	95.5	1.82

Performance shown is for installation type B - free inlet, ducted outlet. Performance ratings do not include the effects of appurtenances(accessories). Values shown are for inlet LwiA sound power levels for Installation type B: free inlet, ducted outlet. The sound power level ratings shown are in decibels, referred to as 10⁻¹² Watts, calculated per AMCA International Standard 301. The A-weighted sound ratings shown have been calculated per AMCA International Standard 301. dBA A-weighted sound pressure level is based on 11.5dB sound attenuation per octave band at 1.5m. dBA A-weighted sound pressure level are not licensed by AMCA International.

Model: YFIAM-1120D4														
Hub Dia=614.4mm				Blade Num=12		RPM=1450r/min							Density=1.2kg/m ³	
					(dB)									FEI
Deg	m³/h	Pa	Pa	kW	1	2	3	4	5	6	7	8	LwiA	Regulated
0°	36787	836	773	17.985	104.8	105.6	116.7	108.7	105.7	100.3	94.6	88.6	111.9	
	42918	636	550	18.961	104.2	106.2	118.1	110.1	107.2	101.2	95.2	89.2	113.3	
	47006	481	378	19.478	103.9	106.5	115.9	109.9	107.5	101.9	96.5	90.9	112.7	
	51093	316	195	19.762	103.5	106.9	113.6	109.5	107.9	102.5	97.9	92.5	112.3	
5°	46035	1006	903	23.528	107.4	106.8	115.1	109.0	106.5	101.6	95.7	90.0	111.9	1.16
	53707	828	689	24.540	105.8	106.1	114.9	110.0	107.8	102.7	97.0	91.4	112.6	1.15
	58822	648	480	24.673	105.0	105.8	113.4	109.9	108.2	103.3	98.2	92.9	112.6	
	63937	448	250	24.361	104.8	106.0	112.3	109.6	108.3	103.6	99.3	94.3	112.5	
10°	55283	1177	1034	29.072	110.0	108.0	113.6	106.9	107.3	102.8	96.8	91.4	112.0	1.32
	64497	1021	827	30.120	107.3	105.9	111.7	109.8	108.3	104.1	98.7	93.5	112.5	1.39
	70639	815	581	29.868	106.1	105.0	110.9	109.9	108.8	104.7	99.8	94.9	112.9	1.36
	76782	580	305	28.960	106.1	105.1	111.1	109.8	108.8	104.8	100.6	96.1	113.0	1.31
15°	61344	1318	1136	37.778	110.0	108.5	113.5	109.8	107.9	103.5	97.7	92.3	112.5	1.24
	73049	1174	911	40.217	107.3	105.6	111.5	110.1	109.0	104.5	99.2	94.2	113.0	1.32
	80853	979	653	40.958	106.1	104.7	110.8	110.3	109.6	105.3	100.3	95.6	113.4	1.32
	88657	750	357	40.942	105.9	104.9	110.9	110.2	109.6	105.6	101.3	96.9	113.6	1.29
20°	67406	1459	1237	46.209	110.1	108.9	113.4	110.4	108.5	104.2	98.6	93.3	113.0	1.28
	81602	1328	995	50.073	107.2	105.4	111.3	110.4	109.7	105.0	99.7	91.6	113.4	1.41
	91067	1143	724	51.820	106.0	104.4	110.6	110.6	110.3	105.8	100.8	96.2	113.9	1.44
	100532	920	409	52.757	105.7	104.7	110.7	110.7	110.5	106.5	102.0	97.7	114.3	1.46
25°	73467	1600	1339	54.419	110.1	109.3	113.3	111.0	109.0	104.8	99.5	94.3	113.5	1.31
	90155	1481	1079	59.768	107.1	105.1	111.2	110.7	110.4	105.4	100.2	95.6	113.9	1.48
	101281	1307	796	62.529	105.9	104.1	110.5	110.9	111.1	106.3	101.3	96.9	114.5	1.54
	112407	1089	461	64.462	105.6	104.5	110.6	111.2	111.4	107.4	102.7	98.5	115.0	1.59
30°	79528	1742	1440	62.518	110.2	109.8	113.3	111.6	109.6	105.5	100.3	95.2	114.1	1.35
	98708	1635	1163	69.348	107.1	104.8	111.0	111.1	111.1	105.8	100.7	96.3	114.4	1.56
	111495	1471	867	73.114	105.9	103.9	110.3	111.3	111.8	106.8	101.8	97.6	115.0	1.66
	124282	1259	513	76.094	105.4	104.4	110.4	111.7	112.3	108.2	103.4	99.3	115.8	1.75
35°	85590	1883	1542	70.467	110.2	110.2	113.2	112.2	110.2	106.2	101.2	96.2	114.6	1.40
	107261	1788	1247	78.833	107.0	104.6	110.8	111.4	111.8	106.2	101.2	97.0	114.9	1.66
	121709	1635	939	83.602	105.8	103.6	110.2	111.6	112.6	107.3	102.3	98.3	115.6	1.80
	136157	1429	565	87.672	105.2	104.2	110.2	112.2	113.2	109.1	104.1	100.1	116.5	1.93

Performance shown is for installation type B - free inlet, ducted outlet. Performance ratings do not include the effects of appurtenances(accessories). Values shown are for inlet LwiA sound power levels for Installation type B: free inlet, ducted outlet. The sound power level ratings shown are in decibels, referred to as 10⁻¹² Watts , calculated per AMCA International Standard 301. The A-weighted sound ratings shown have been calculated per AMCA International Standard 301. dBA A-weighted sound pressure level is based on 11.5dB sound attenuation per octave band at 1.5m. dBA A-weighted sound pressure level are not licensed by AMCA International.

Model: YFIAM-1120D6															
Hub Dia=614.4mm				Blade Num=12				RPM=960r/min				Density=1.2kg/m ³			
					(dB)									FEI	
Deg	m³/h	Pa	Pa	kW	1	2	3	4	5	6	7	8	LwiA	Regulated	
0°	24356	366	339	5.219	96.4	103.0	107.8	98.0	93.6	88.0	82.1	76.1	101.8	1.12	
	28415	279	241	5.503	96.5	104.0	109.2	99.5	94.7	88.7	82.7	76.7	103.1		
	31121	211	166	5.653	96.6	102.9	107.0	99.6	95.2	89.8	84.2	78.6	102.2		
	33827	139	85	5.735	96.6	101.8	104.7	99.6	95.8	90.8	85.8	80.4	101.7		
5°	30478	441	396	6.828	98.1	102.6	106.2	98.6	94.7	89.2	83.4	77.7	101.5	1.27	
	35558	363	302	7.122	97.1	102.2	106.0	99.8	95.8	90.4	84.7	79.1	102.1	1.28	
	38945	284	210	7.160	96.6	101.2	104.5	100.0	96.4	91.3	86.1	80.8	102.0	1.23	
	42331	196	109	7.070	96.6	100.7	103.4	99.9	96.6	92.1	87.4	82.4	101.9	1.15	
10°	36601	516	453	8.437	99.9	102.3	104.7	106.9	95.7	90.3	84.7	79.3	101.5	1.44	
	42701	447	363	8.741	97.6	100.3	102.8	100.0	96.9	92.0	86.7	81.5	101.9	1.53	
	46768	357	255	8.668	96.5	99.4	102.0	100.3	97.4	92.9	88.0	83.1	102.2	1.51	
	50835	254	134	8.404	96.6	99.6	102.2	100.3	97.5	93.4	89.0	84.5	102.4	1.47	
15°	40614	578	498	10.964	100.2	102.4	104.6	99.8	96.4	91.1	85.6	80.2	101.9	1.36	
	48364	515	399	11.671	97.4	100.0	102.6	100.5	97.4	92.4	87.3	82.3	102.2	1.47	
	53530	429	286	11.886	96.4	99.3	101.9	101.0	98.1	93.4	88.6	83.9	102.7	1.47	
	58697	329	156	11.882	96.4	99.4	102.0	100.9	98.3	94.1	89.8	85.4	103.0	1.46	
20°	44627	640	542	13.410	100.5	102.6	104.5	100.4	97.0	91.9	86.5	81.2	102.4	1.34	
	54026	582	436	14.532	97.2	99.8	102.4	101.1	98.0	92.9	87.9	81.6	102.7	1.48	
	60293	501	317	15.039	96.1	99.0	101.7	101.5	98.7	93.9	89.1	84.5	103.2	1.51	
	66559	403	179	15.311	96.2	99.2	101.8	101.7	99.2	94.9	90.5	86.2	103.7	1.53	
25°	48640	702	587	15.793	100.7	102.7	104.4	100.9	97.6	92.7	87.5	82.3	102.8	1.35	
	59689	649	473	17.345	97.0	99.7	102.3	101.6	98.5	93.4	88.5	83.9	103.1	1.51	
	67055	573	349	18.146	95.9	98.8	101.8	102.1	99.3	94.4	89.8	85.4	103.7	1.58	
	74421	478	202	18.707	96.0	99.1	102.1	102.4	100.1	95.7	91.3	87.1	104.5	1.63	
30°	52653	763	631	18.143	101.1	102.9	104.4	101.5	98.2	93.5	88.3	83.2	103.4	1.37	
	65352	717	510	20.125	96.8	99.4	102.2	102.2	99.0	93.8	89.2	84.8	103.6	1.65	
	73817	645	380	21.218	95.8	98.6	102.0	102.7	99.9	94.9	90.4	86.2	104.3	1.76	
	82283	552	225	22.083	95.9	98.9	102.3	103.2	100.9	96.4	92.0	87.9	105.2	1.86	
35°	56666	825	676	20.450	101.3	103.0	104.3	102.1	98.9	94.3	89.3	84.3	103.9	1.48	
	71014	784	547	22.878	96.7	99.2	102.3	102.7	99.5	94.3	89.8	85.6	104.1	1.75	
	80580	717	412	24.262	95.6	98.4	102.1	103.3	100.5	95.4	91.0	87.0	104.8	1.90	
	90145	626	248	25.443	95.7	98.7	102.5	103.9	101.8	97.2	92.8	88.8	106.0	2.04	

Performance shown is for installation type B - free inlet, ducted outlet. Performance ratings do not include the effects of appurtenances(accessories). Values shown are for inlet LwiA sound power levels for Installation type B: free inlet, ducted outlet. The sound power level ratings shown are in decibels, referred to as 10⁻¹² Watts, calculated per AMCA International Standard 301. The A-weighted sound ratings shown have been calculated per AMCA International Standard 301. dBA A-weighted sound pressure level is based on 11.5dB sound attenuation per octave band at 1.5m. dBA A-weighted sound pressure level are not licensed by AMCA International.

Model: YFIAM-1120D8														
Hub Dia=614.4mm				Blade Num=12				RPM=720r/min				Density=1.2kg/m ³		
					dBA									FEI
Deg	m³/h	Pa	Pa	kW	1	2	3	4	5	6	7	8	LwiA	Regulated
0°	18267	206	191	2.202	90.4	101.5	93.5	90.5	85.1	79.4	73.4	67.2	92.2	1.24
	21311	157	136	2.321	91.0	102.9	94.9	92.0	86.0	80.0	74.0	67.8	93.5	
	23341	119	93	2.385	91.3	100.7	94.7	92.3	86.7	81.3	75.7	69.9	93.4	
	25370	78	48	2.419	91.7	98.4	94.3	92.7	87.3	82.7	77.3	71.7	93.6	
5°	22859	248	223	2.881	91.6	99.9	93.8	91.3	86.4	80.5	74.8	68.9	92.7	1.36
	26669	204	170	3.005	90.9	99.7	94.8	92.6	87.5	81.8	76.2	70.4	93.7	1.38
	29208	160	118	3.021	90.6	98.2	94.7	93.0	88.1	83.0	77.7	72.2	94.0	1.35
	31748	110	62	2.983	90.8	97.1	94.4	93.1	88.4	84.1	79.1	73.9	94.2	1.30
10°	27451	290	255	3.559	92.8	98.4	94.0	106.9	87.6	81.6	76.2	70.6	93.3	1.49
	32026	252	204	3.688	90.7	96.5	94.6	93.1	88.9	83.5	78.3	72.9	94.2	1.58
	35076	201	143	3.657	89.8	95.7	94.7	93.6	89.5	84.6	79.7	74.6	94.8	1.58
	38126	143	75	3.546	89.9	95.9	94.6	93.6	89.6	85.4	80.9	76.3	95.0	1.57
15°	30461	325	280	4.625	93.3	98.3	94.6	92.7	88.3	82.5	77.1	71.5	93.9	1.46
	36273	290	225	4.924	90.4	96.3	94.9	93.8	89.3	84.0	79.0	73.8	94.7	1.58
	40148	241	161	5.015	89.5	95.6	95.1	94.4	90.1	85.1	80.4	75.5	95.4	1.60
	44023	185	88	5.013	89.7	95.7	95.0	94.4	90.4	86.1	81.7	77.2	95.7	1.60
20°	33470	360	305	5.657	93.7	98.2	95.2	93.3	89.0	83.4	78.1	72.6	94.5	1.43
	40520	327	245	6.131	90.2	96.1	95.2	94.5	89.8	84.5	79.7	91.6	95.3	1.58
	45219	282	179	6.344	89.2	95.4	95.4	95.1	90.6	85.6	81.0	76.2	95.9	1.62
	49919	227	101	6.459	89.5	95.5	95.5	95.3	91.3	86.8	82.5	78.1	96.5	1.65
25°	36480	395	330	6.663	94.1	98.1	95.8	93.8	89.6	84.3	79.1	73.7	95.1	1.43
	44767	365	266	7.317	89.9	96.0	95.5	95.2	90.2	85.0	80.4	75.6	95.8	1.61
	50291	322	196	7.656	88.9	95.3	95.7	95.9	91.1	86.1	81.7	77.2	96.5	1.68
	55816	269	114	7.892	89.3	95.4	96.0	96.2	92.2	87.5	83.3	79.0	97.3	1.74
30°	39490	429	355	7.654	94.6	98.1	96.4	94.4	90.3	85.1	80.0	74.7	95.7	1.46
	49014	403	287	8.490	89.6	95.8	95.9	95.9	90.6	85.5	81.1	76.6	96.3	1.73
	55363	363	214	8.952	88.7	95.1	96.1	96.6	91.6	86.6	82.4	78.1	97.1	1.84
	61712	310	126	9.316	89.2	95.2	96.5	97.1	93.0	88.2	84.1	79.9	98.1	1.95
35°	42500	464	380	8.627	95.0	98.0	97.0	95.0	91.0	86.0	81.0	75.8	96.4	1.54
	53261	441	308	9.652	89.4	95.6	96.2	96.6	91.0	86.0	81.8	77.5	96.9	1.82
	60435	403	231	10.236	88.4	95.0	96.4	97.4	92.1	87.1	83.1	79.0	97.7	1.97
	67609	352	139	10.734	89.0	95.0	97.0	98.0	93.9	88.9	84.9	80.8	98.9	2.12

Performance shown is for installation type B - free inlet, ducted outlet. Performance ratings do not include the effects of appurtenances(accessories). Values shown are for inlet LwiA sound power levels for Installation type B: free inlet, ducted outlet. The sound power level ratings shown are in decibels, referred to as 10⁻¹² Watts, calculated per AMCA International Standard 301. The A-weighted sound ratings shown have been calculated per AMCA International Standard 301. dBA A-weighted sound pressure level is based on 11.5dB sound attenuation per octave band at 1.5m. dBA A-weighted sound pressure level are not licensed by AMCA International.

Model: YFIAM-1250D4														
Hub Dia=687mm				Blade Num=12				RPM=1450r/min				Density=1.2kg/m³		
					dBA									FEI
Deg	m³/h	Pa	Pa	kW	1	2	3	4	5	6	7	8	LwIA	Regulated
0°	35425	1288	1250	25.658	113.0	113.0	118.0	109.8	106.8	102.6	96.6	90.2	113.4	
	48557	1007	934	30.238	113.3	113.3	119.5	111.9	108.4	104.2	98.2	91.5	115.0	
	57311	750	649	32.516	112.4	112.4	118.7	112.7	109.4	105.1	99.5	93.2	115.3	
	66066	465	333	34.540	111.0	111.0	117.1	113.1	110.2	105.9	100.8	95.2	115.4	
5°	49891	1425	1337	36.466	114.1	114.1	119.4	111.9	108.3	104.5	98.1	91.2	115.0	
	64155	1199	1060	42.117	112.2	112.2	118.3	114.0	109.5	105.8	100.0	93.2	115.7	
	73665	930	748	44.012	111.3	111.3	117.4	113.6	109.7	106.3	100.9	94.8	115.5	
	83174	632	406	44.169	110.1	110.1	116.2	113.1	109.9	106.6	101.9	96.6	115.3	
10°	64356	1562	1425	47.941	115.1	115.1	120.8	106.9	109.7	106.3	99.7	92.2	116.6	1.18
	79754	1392	1186	53.869	111.0	111.0	117.1	116.1	110.6	107.4	101.7	95.0	116.8	1.23
	90018	1109	847	54.938	110.1	110.1	116.2	114.6	110.0	107.4	102.4	96.4	116.0	1.20
	100283	798	479	53.248	109.1	109.1	115.3	113.2	109.6	107.4	103.0	98.0	115.3	1.17
15°	78822	1699	1513	59.699	116.2	116.2	122.2	116.2	111.2	108.2	101.2	93.2	118.3	1.30
	95352	1585	1312	65.241	109.9	109.9	115.9	118.2	111.7	109.0	103.4	96.7	118.2	1.43
	106372	1288	945	65.292	109.0	109.0	115.0	115.5	110.3	108.6	103.8	98.0	116.6	1.44
	117392	965	552	62.046	108.2	108.2	114.3	113.2	109.3	108.2	104.2	99.3	115.5	1.47
20°	87953	1852	1613	73.716	115.2	115.2	120.7	115.7	111.4	108.7	101.9	94.7	117.8	1.28
	107601	1729	1367	80.989	109.1	109.1	115.7	117.2	112.4	109.3	103.8	91.6	118.0	1.43
	120699	1447	986	82.628	108.1	108.1	115.0	115.3	111.8	109.2	104.4	98.7	117.1	1.46
	133798	1145	583	81.568	107.2	107.2	114.5	113.7	111.5	109.2	104.9	100.0	116.5	1.51
25°	97085	2006	1714	87.833	114.2	114.2	119.2	115.2	111.7	109.2	102.7	96.2	117.5	1.29
	119850	1873	1422	96.609	108.4	108.4	115.5	116.2	113.1	109.7	104.3	98.1	117.9	1.47
	135026	1605	1026	99.658	107.3	107.3	115.1	115.1	113.3	109.9	105.0	99.4	117.7	1.52
	150203	1324	615	100.904	106.2	106.2	114.8	114.2	113.7	110.2	105.7	100.8	117.8	1.60
30°	106216	2159	1814	102.033	113.2	113.2	117.7	114.7	111.9	109.7	103.4	97.7	117.3	1.31
	132099	2017	1477	112.139	107.7	107.7	115.4	115.2	113.8	110.0	104.8	98.7	117.9	1.59
	149354	1764	1066	116.461	106.4	106.4	115.1	114.9	114.8	110.6	105.7	100.1	118.5	1.69
	166609	1503	647	120.110	105.2	105.2	115.0	114.7	115.9	111.2	106.5	101.5	119.1	1.81
35°	115348	2312	1914	116.155	112.2	112.2	116.2	114.2	112.2	110.2	104.2	99.2	117.3	1.41
	144348	2161	1532	127.601	106.9	106.9	115.2	114.3	114.5	110.3	105.3	99.4	118.1	1.68
	163681	1923	1107	133.143	105.6	105.6	115.2	114.7	116.4	111.3	106.3	100.8	119.4	1.83
	183014	1682	678	139.222	104.2	104.2	115.2	115.2	118.2	112.2	107.2	102.2	120.7	1.99

Performance shown is for installation type B - free inlet, ducted outlet. Performance ratings do not include the effects of appurtenances(accessories). Values shown are for inlet LwIA sound power levels for Installation type B: free inlet, ducted outlet. The sound power level ratings shown are in decibels, referred to as 10⁻¹² Watts, calculated per AMCA International Standard 301. The A-weighted sound ratings shown have been calculated per AMCA International Standard 301. dBA A-weighted sound pressure level is based on 11.5dB sound attenuation per octave band at 1.5m. dBA A-weighted sound pressure level are not licensed by AMCA International.

Model: YFIAM-1250D6														
Hub Dia=687mm				Blade Num=12				RPM=960r/min				Density=1.2kg/m³		
					(dB)									FEI
Deg	m³/h	Pa	Pa	kW	1	2	3	4	5	6	7	8	LwiA	Regulated
0°	23454	565	548	7.446	104.1	106.9	109.1	99.1	95.4	90.1	83.9	77.1	103.3	
	32148	441	409	8.775	104.4	107.9	110.6	100.9	97.0	91.7	85.3	77.9	104.9	
	37944	329	285	9.436	103.5	107.1	109.8	101.8	97.9	92.8	86.8	79.9	104.9	
	43740	204	146	10.024	102.1	105.6	108.2	102.5	98.7	93.9	88.5	82.6	104.8	
5°	33031	625	586	10.583	105.2	108.2	110.5	100.8	97.1	91.8	85.1	78.4	104.8	1.14
	42475	526	464	12.223	103.3	106.8	109.4	102.4	98.4	93.4	87.0	79.8	105.1	1.14
	48771	407	328	12.773	102.4	105.9	108.5	102.4	98.8	94.2	88.3	81.5	104.9	
	55067	277	178	12.818	101.2	104.7	107.3	102.3	99.0	94.9	89.8	83.7	104.7	
10°	42608	685	625	13.913	106.2	109.4	111.9	106.9	98.8	93.4	86.3	79.6	106.4	1.23
	52802	610	520	15.633	102.1	105.6	108.2	103.9	99.8	95.1	88.8	81.7	105.6	1.29
	59598	486	371	15.944	101.2	104.7	107.3	102.9	99.5	95.5	89.9	83.1	105.1	1.26
	66394	350	210	15.453	100.2	103.7	106.4	102.1	99.4	95.9	91.1	84.7	104.8	1.25
15°	52186	745	663	17.325	107.3	110.7	113.3	104.3	100.5	95.1	87.5	80.8	107.9	1.33
	63130	695	575	18.933	101.0	104.4	108.4	105.4	101.2	96.7	90.5	83.6	106.8	1.46
	70426	564	414	18.948	100.1	103.5	106.4	103.5	100.4	96.8	91.4	84.7	105.6	1.47
	77722	423	242	18.006	99.3	102.8	105.4	102.0	99.7	96.9	92.4	85.8	104.9	1.53
20°	58231	812	707	21.393	106.3	109.4	111.8	104.2	100.9	95.7	88.7	82.6	107.3	1.36
	71239	758	599	23.504	100.2	103.9	107.7	105.4	101.6	97.1	91.1	91.6	106.9	1.52
	79911	634	432	23.979	99.2	103.1	106.3	104.3	101.3	97.4	92.1	85.9	106.3	1.56
	88583	502	256	23.672	98.3	102.4	105.6	103.5	101.2	97.7	93.1	86.9	106.0	1.62
25°	64277	879	751	25.490	105.3	108.1	110.3	104.2	101.3	96.4	89.9	84.4	107.0	1.37
	79349	821	623	28.037	99.5	103.5	107.0	105.4	102.2	97.6	91.7	85.9	107.0	1.56
	89397	704	450	28.922	98.4	102.8	106.2	105.1	102.4	98.1	92.7	87.0	107.0	1.62
	99445	580	270	29.283	97.3	102.2	105.9	105.0	102.7	98.6	93.9	88.1	107.2	1.71
30°	70322	946	795	29.611	104.3	106.9	108.8	104.1	101.7	97.0	91.1	86.2	106.8	1.39
	87458	884	647	32.544	98.8	103.2	106.5	105.5	102.6	98.0	92.2	87.0	107.2	1.62
	98882	773	467	33.798	97.5	102.4	106.2	105.9	103.4	98.8	93.4	88.1	107.8	1.71
	110306	659	283	34.857	96.3	101.9	106.1	106.5	104.2	99.5	94.6	89.2	108.4	1.83
35°	76368	1013	839	33.709	103.3	105.6	107.3	104.1	102.1	97.7	92.3	88.0	106.7	1.43
	95568	947	672	37.031	98.0	102.7	106.3	105.5	103.1	98.4	92.9	88.1	107.5	1.69
	108368	843	485	38.639	96.7	102.1	106.3	106.8	104.4	99.4	94.1	89.3	108.6	1.82
	121168	737	297	40.403	95.3	101.5	106.3	108.1	105.7	100.3	95.3	90.4	109.7	1.97

Performance shown is for installation type B - free inlet, ducted outlet. Performance ratings do not include the effects of appurtenances(accessories). Values shown are for inlet LwIA sound power levels for Installation type B: free inlet, ducted outlet. The sound power level ratings shown are in decibels, referred to as 10⁻¹² Watts, calculated per AMCA International Standard 301. The A-weighted sound ratings shown have been calculated per AMCA International Standard 301. dBA A-weighted sound pressure level is based on 11.5dB sound attenuation per octave band at 1.5m. dBA A-weighted sound pressure level are not licensed by AMCA International.

Model: YFIAM-1250D8														
Hub Dia=687mm				Blade Num=12		RPM=720r/min						Density=1.2kg/m³		
					(dB)									FEI
Deg	m³/h	Pa	Pa	kW	1	2	3	4	5	6	7	8	LwIA	Regulated
0°	17591	318	308	3.141	97.8	102.8	94.6	91.6	87.4	81.4	75.0	67.8	93.7	1.15
	24111	248	230	3.702	98.1	104.3	96.8	93.3	89.1	83.1	76.3	68.2	95.4	1.15
	28458	185	160	3.981	97.2	103.5	97.5	94.2	89.9	84.3	78.0	70.5	96.0	
	32805	115	82	4.229	95.8	102.0	97.9	95.1	90.7	85.6	80.1	73.7	96.6	
5°	24773	351	330	4.465	98.9	104.2	96.7	93.1	89.3	82.9	76.0	69.2	95.4	1.25
	31856	296	261	5.156	97.0	103.1	98.8	94.3	90.7	84.8	78.1	70.3	96.5	1.27
	36578	229	184	5.388	96.1	102.3	98.4	94.5	91.1	85.7	79.6	72.1	96.7	1.22
	41300	156	100	5.408	94.9	101.0	98.0	94.7	91.4	86.7	81.4	74.5	96.8	1.17
10°	31956	385	351	5.870	99.9	105.6	98.9	106.9	91.1	84.5	77.0	70.6	104.3	1.35
	39602	343	292	6.595	95.8	101.9	100.9	95.4	92.2	86.5	79.8	72.3	97.9	1.42
	44699	273	209	6.726	94.9	101.0	99.4	94.8	92.2	87.2	81.2	73.7	97.4	1.40
	49796	197	118	6.519	93.9	100.1	98.0	94.4	92.2	87.9	82.8	75.3	97.2	1.41
15°	39139	419	373	7.3091	101.0	107.0	101.0	96.0	93.0	86.0	78.0	72.0	98.8	1.45
	47347	391	323	7.98756	94.7	100.7	103.0	96.5	93.8	88.2	81.5	74.3	99.4	1.59
	52819	318	233	7.99376	93.8	99.8	100.3	95.1	93.4	88.6	82.8	75.2	98.2	1.62
	58291	238	136	7.59643	93.0	99.1	98.0	94.1	93.0	89.0	84.1	76.1	97.6	1.69
20°	43673	457	398	9.025	100.0	105.5	100.5	96.2	93.5	86.7	79.5	74.0	98.7	1.45
	53429	426	337	9.916	93.9	100.5	102.0	97.2	94.1	88.6	82.2	91.6	99.4	1.63
	59933	357	243	10.116	92.9	99.8	100.1	96.6	94.0	89.2	83.5	76.7	98.9	1.67
	66437	282	144	9.986	92.0	99.3	98.5	96.3	94.0	89.7	84.8	77.6	98.7	1.75
25°	48208	495	423	10.754	99.0	104.0	100.0	96.5	94.0	87.5	81.0	76.0	98.8	1.46
	59512	462	351	11.828	93.2	100.3	101.0	97.9	94.5	89.1	82.9	77.2	99.6	1.66
	67048	396	253	12.201	92.1	99.9	99.9	98.1	94.7	89.8	84.2	78.1	99.7	1.74
	74584	326	152	12.354	91.0	99.6	99.0	98.5	95.0	90.5	85.6	79.1	99.9	1.83
30°	52742	532	447	12.492	98.0	102.5	99.5	96.7	94.5	88.2	82.5	78.0	99.0	1.48
	65594	497	364	13.729	92.5	100.2	100.0	98.6	94.8	89.6	83.5	78.7	99.9	1.72
	74162	435	263	14.258	91.2	99.9	99.7	99.6	95.4	90.5	84.9	79.6	100.5	1.83
	82730	371	159	14.705	90.0	99.8	99.5	100.7	96.0	91.3	86.3	80.5	101.3	1.95
35°	57276	570	472	14.221	97.0	101.0	99.0	97.0	95.0	89.0	84.0	80.0	99.3	1.52
	71676	533	378	15.622	91.7	100.0	99.1	99.3	95.1	90.1	84.2	80.1	100.2	1.79
	81276	474	273	16.301	90.4	100.0	99.5	101.2	96.1	91.1	85.6	81.1	101.5	1.94
	90876	415	167	17.045	89.0	100.0	100.0	103.0	97.0	92.0	87.0	82.0	102.8	2.09

Performance shown is for installation type B - free inlet, ducted outlet. Performance ratings do not include the effects of appurtenances(accessories). Values shown are for inlet LwA sound power levels for Installation type B: free inlet, ducted outlet. The sound power level ratings shown are in decibels, referred to as 10⁻¹² Watts , calculated per AMCA International Standard 301. The A-weighted sound ratings shown have been calculated per AMCA International Standard 301. dBA A-weighted sound pressure level is based on 11.5dB sound attenuation per octave band at 1.5m. dBA A-weighted sound pressure level are not licensed by AMCA International.

Model: YFIAM-1400D6														
Hub Dia=769.5mm				Blade Num=12				RPM=960r/min				Density=1.2kg/m³		
					dBA									FEI
Deg	m³/h	Pa	Pa	kW	1	2	3	4	5	6	7	8	LwiA	Regulated
0°	32960	709	687	13.128	107.5	110.3	112.5	102.5	98.8	93.5	87.3	80.5	106.7	
	45177	554	513	15.472	107.8	111.3	114.0	104.3	100.4	95.1	88.7	81.3	108.3	
	53322	413	357	16.637	106.9	110.5	113.2	105.2	101.3	96.2	90.2	83.3	108.3	
	61467	256	183	17.673	105.5	109.0	111.6	105.9	102.1	97.3	91.9	86.0	108.2	
5°	46418	784	735	18.659	108.6	111.6	113.9	104.2	100.5	95.2	88.5	81.8	108.2	
	59690	660	583	21.550	106.7	110.2	112.8	105.8	101.8	96.8	90.4	83.2	108.5	1.13
	68538	511	411	22.519	105.8	109.3	111.9	105.8	102.2	97.6	91.7	84.9	108.3	
	77385	347	223	22.600	104.6	108.1	110.7	105.7	102.4	98.3	93.2	87.1	108.1	
10°	59877	859	784	24.530	109.6	112.8	115.3	106.9	102.2	96.8	89.7	83.0	109.8	1.22
	74203	766	652	27.563	105.5	109.0	111.6	107.3	103.2	98.5	92.2	85.1	109.0	1.28
	83753	610	466	28.110	104.6	108.1	110.7	106.3	102.9	98.9	93.3	86.5	108.5	1.24
	93303	439	263	27.245	103.6	107.1	109.8	105.5	102.8	99.3	94.5	88.1	108.2	1.22
15°	73336	935	832	30.546	110.7	114.1	116.7	107.7	103.9	98.5	90.9	84.2	111.3	1.33
	88715	872	721	33.382	104.4	107.8	111.8	108.8	104.6	100.1	93.9	87.0	110.2	1.46
	98968	708	520	33.407	103.5	106.9	109.8	106.9	103.8	100.2	94.8	88.1	109.0	1.46
	109221	531	303	31.747	102.7	106.2	108.8	105.4	103.1	100.3	95.8	89.2	108.3	1.51
20°	81832	1019	887	37.718	109.7	112.8	115.2	107.6	104.3	99.1	92.1	86.0	110.7	1.30
	100112	951	752	41.440	103.6	107.3	111.1	108.8	105.0	100.5	94.5	91.6	110.3	1.50
	112298	796	542	42.278	102.6	106.5	109.7	107.7	104.7	100.8	95.5	89.3	109.7	1.53
	124485	629	321	41.735	101.7	105.8	109.0	106.9	104.6	101.1	96.5	90.3	109.4	1.58
25°	90328	1103	942	44.941	108.7	111.5	113.7	107.6	104.7	99.8	93.3	87.8	110.4	1.35
	111508	1030	782	49.432	102.9	106.9	110.4	108.8	105.6	101.0	95.1	89.3	110.4	1.55
	125628	883	564	50.992	101.8	106.2	109.6	108.5	105.8	101.5	96.1	90.4	110.4	1.60
	139749	728	338	51.629	100.7	105.6	109.3	108.4	106.1	102.0	97.3	91.5	110.6	1.68
30°	98823	1187	998	52.207	107.7	110.3	112.2	107.5	105.1	100.4	94.5	89.6	110.2	1.39
	122904	1109	812	57.378	102.2	106.6	109.9	108.9	106.0	101.4	95.6	90.4	110.6	1.61
	138958	970	586	59.589	100.9	105.8	109.6	109.3	106.8	102.2	96.8	91.5	111.2	1.71
	155012	827	356	61.456	99.7	105.3	109.5	109.9	107.6	102.9	98.0	92.6	111.8	1.82
35°	107319	1271	1053	59.432	106.7	109.0	110.7	107.5	105.5	101.1	95.7	91.4	110.1	1.43
	134301	1188	843	65.289	101.4	106.1	109.7	108.9	106.5	101.8	96.3	91.5	110.9	1.70
	152288	1057	609	68.125	100.1	105.5	109.7	110.2	107.8	102.8	97.5	92.7	112.0	1.84
	170276	925	373	71.235	98.7	104.9	109.7	111.5	109.1	103.7	98.7	93.8	113.1	1.98

Performance shown is for installation type B - free inlet, ducted outlet. Performance ratings do not include the effects of appurtenances(accessories). Values shown are for inlet LwIA sound power levels for Installation type B: free inlet, ducted outlet. The sound power level ratings shown are in decibels, referred to as 10⁻¹² Watts , calculated per AMCA International Standard 301. The A-weighted sound ratings shown have been calculated per AMCA International Standard 301. dBA A-weighted sound pressure level is based on 11.5dB sound attenuation per octave band at 1.5m. dBA A-weighted sound pressure level are not licensed by AMCA International.

Technical Specification

• Section One: Fan Type

It shall be vane-axial fan with airfoil blades. The fan shall be direct driven and in a cylindrical structure. Behind the impeller in the cylindrical body, there shall be guiding vanes for airflow straightening. The guiding vane shall have a three-dimensional curved surface in line with flow field characteristics for better air performance and static pressure efficiency.

• Section Two: Impeller

It shall be an axial impeller with airfoil blades of variable angles to ensure that right models can be selected for various operating conditions. The impeller shall have a vortex hub to effectively control eddy formations and airfoil blades of optimum air performance. Stable airflow and low sound shall be ensured at the maximum running speed. Die formed with cast aluminum, the hub and blades shall be strong enough to maintain operational reliability and safety at a speed 120% of the maximum speed. The impeller shall be dynamically balanced up to G2.5 grade as per AMCA 204 so that its operational stability can be improved and service life extended.

• Section Three: Fan Housing

The fan housing shall be made of quality carbon steel and continuously welded and use lap joint flanges. For the fan housing with the impeller diameter of less than 500mm, the carbon steel thickness should be no less than 2mm; For the fan housing with the impeller diameter between 500 and 1000mm, the carbon steel thickness should be no less than 2.5mm; For the fan housing with the impeller diameter of over 1000mm, the carbon steel thickness should be no less than 3mm. All these are to ensure the fan's operational safety and reliability over a long period of time and extend its service life.

• Section Four: Surface Processing

The surface of the fan shall be polished to remove any protuberances, welding spatters, burrs, sharp edges and scrap iron. Then it shall undergo the processes of oil removal, pickling, parkerizing, applying putty before being finished with electrostatic epoxy coatings processed under high temperature for strong adhesion. The surface shall be a level one without sags, cracks, cockles or detachment to avoid corrosion over a long period of time.

• Section Five: Quality Standards

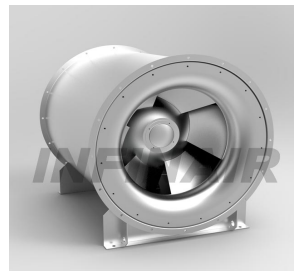
The fan shall be tested and certified in accordance with AMCA Standard 210 & 300. AMCA Seal for Efficiency Sound and Air Performance shall be tagged on each fan before leaving the factory. The manufacturer shall obtain Production License for National Industrial Products and be certified by ISO9001, ISO 14001 and ISO 45001



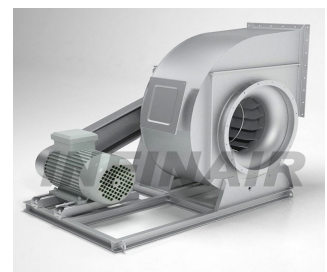
High Pressure Axial Fan



Roof Exhaust Fan



Mix Flow Fan



SISW Centrifugal Fan



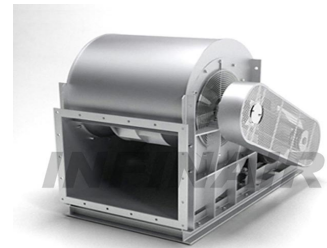
Axial Wall Fan



DIDW Fan



Heavy Industrial Fan



Medium Duty Ind. Fan



Jet Fan

INFINAIR™

INFINAIR ARABIA CO. LTD

Add: Kingdom of Jordan - Amman City - Mowaggar
Industrial Free Zone

Http: //www.infinair-arabia.com

Email: hossam@infinair-arabia.com

Mobile and What's up: +962 - 785382880

**INFINAIR FANS ARE YOUR BEST CHOICE
HIGH QUALITY PRODUCTS**

