

YFBCSL

Backward Curved Steel Wheel Single Inlet Centrifugal Fan-Type L



Process expert Series Principal Products

• High efficiency and liability, low noise

• Balancing level up to G4.0

• General exhaust/supply, explosion-proof exhaust/supply and smoke removal duty

• Temperture: -40°C~300°C

• New energy-saving product

amca

WORLDWIDE

CERTIFIED

RATINGS

SOUND

and

AIR

PERFORMANCE

REG

AMCA

INTERNATIONAL

INC.

INFINAIR ARABIA COMPANY LTD. certifies that the Backward Steel SISW Centrifugal Fans (YFBCSL) shown herein is licensed to bear the AMCA seal. The ratings shown are based on tests and procedures performed in accordance with AMCA Publication 211 and AMCA Publication 311 and comply with the requirements of the AMCA Certified Ratings Program

Backward Curved Steel Wheel Type L



Optimized Design

The fan adopts advanced technology. Design of backward curved centrifugal wheel is optimized by means of CFD hydro-field simulating. The design is more accordant with the aerodynamic characteristics, high efficiency, and stable airflow.

Advanced Process

Steel plasma cutting, precise positioning jig and all-welded technique are adopted for the blade to ensure smoothness of the margin of the blade. The welding angle is accurate, the whole blade is with strong strength, and the stress is evenly distributed during long-time high-speed operation. The operation is stable and reliable.

High Balancing Level

Each wheel is subjected to dynamic balance test. We insist to the balancing level of G4.0 (Typical products are balanced to G6.3 only). Long-term quiet and stable running of the fan is ensured fundamentally.

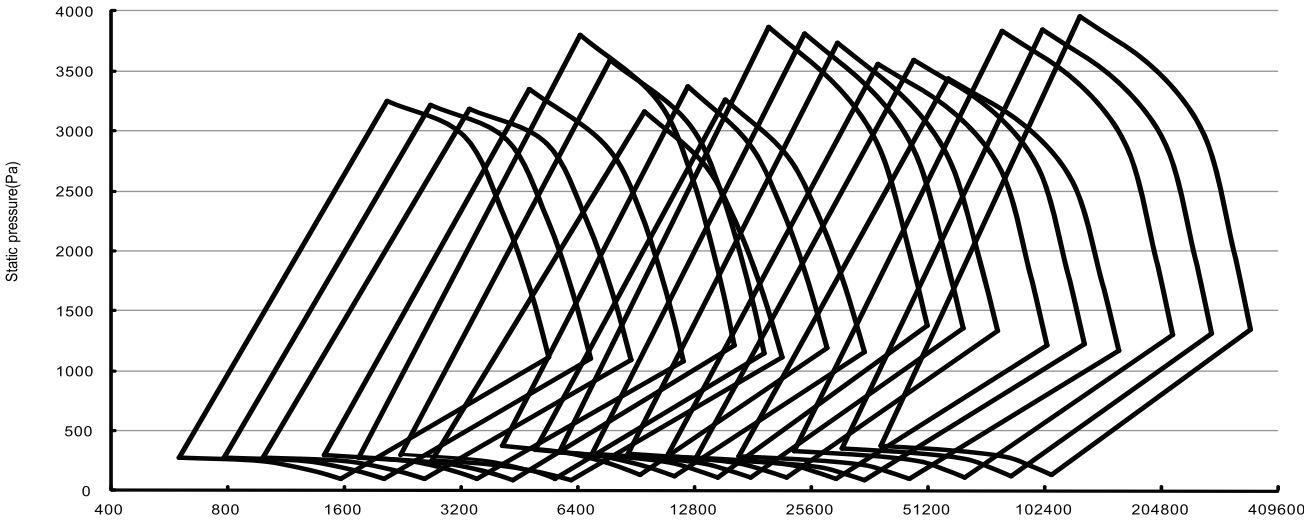
High-efficiency Range

The wheel has a stable and smooth aerodynamic performance curve and owns a wide range of high efficiency working area which can efficiently avoid fan performance decrease caused by the deviation of the working point.

Non-overload

The series wheel exist a peak value of shaft power, when the motor is selected according to the power combined with the margin factor of motor power, the fan shaft power will not exceed the motor rated power no matter on which operation point of the stable working range the is running, then the clients can use it at ease.

Performance Interval



Product Features

High Reliability

- To be adopted FEA-aided design for enhancing the reliability of structure
- Scroll and wheel with high strength and no leakage characteristics are all-steel continuous welded to improve operation safely
- New shaft and coupling technology to ensure precise assembly and high reliability
- Fan shaft is subjected to finish turning & hardening and tempering. Maximum load surpasses 35% of limit speed to ensure the long-term continuous operation of the security
- Bearing seal can be lubricated. Service life more than L10:80000 hours to ensure the reliability of long-term continuous operation
- To be configured shields and adopted bright warning color of the drive unit to ensure the personal safety of customer
- To be vibration tested before the fan leave the factory to achieve the requirements of long-term stable and reliable operation



High Efficiency

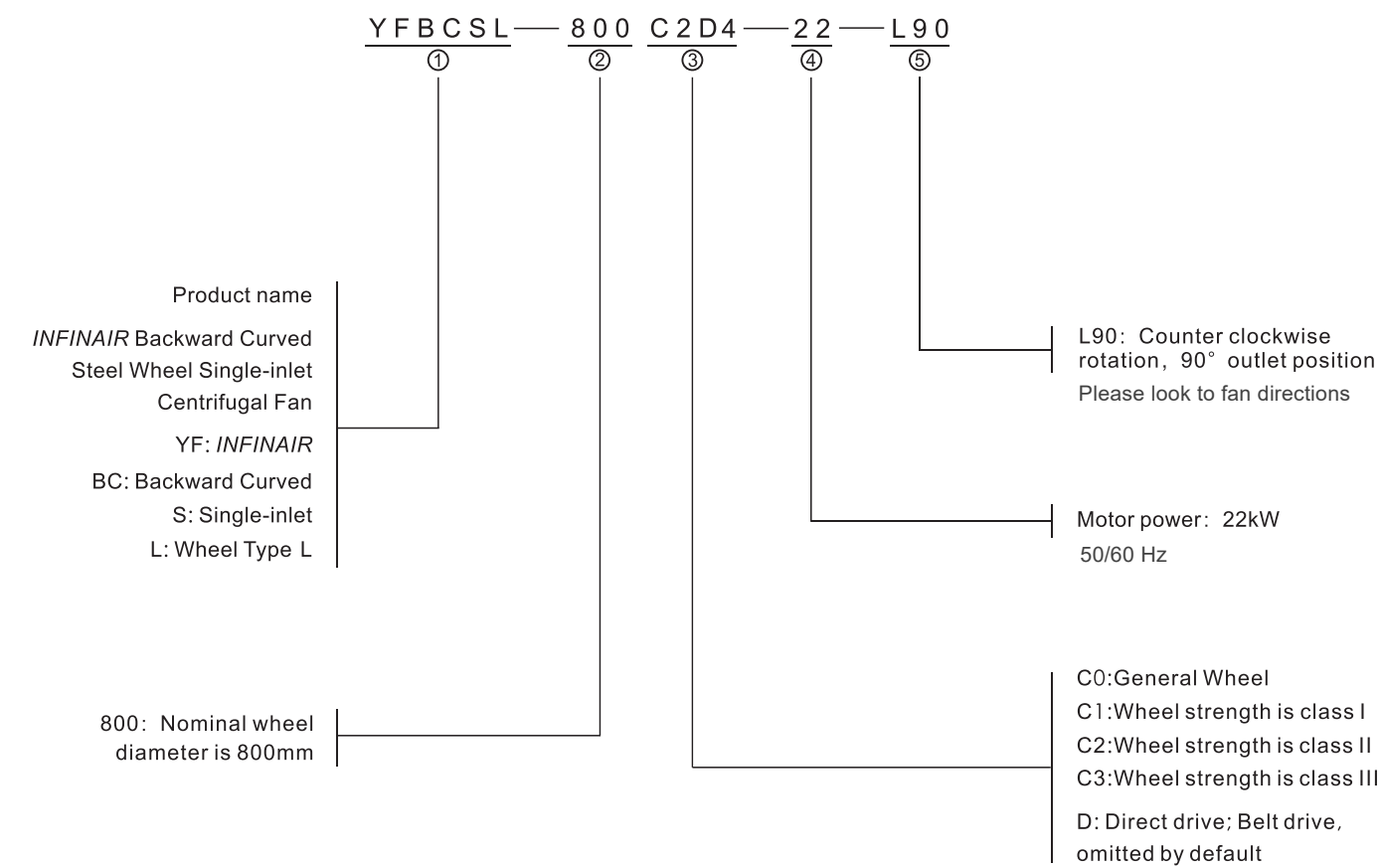
- Venturi inlet matched front disc precisely to avoid turbulent flow and air leakage, so that the air flow more smoothly to improve aerodynamic performance
- Optimized design repeatedly of CFD flow field simulation to ensure aerodynamic performance complied with the flow field characteristics
- Fan Efficiency Grades up to FEG80 (AMCA 205-10)

Convenient

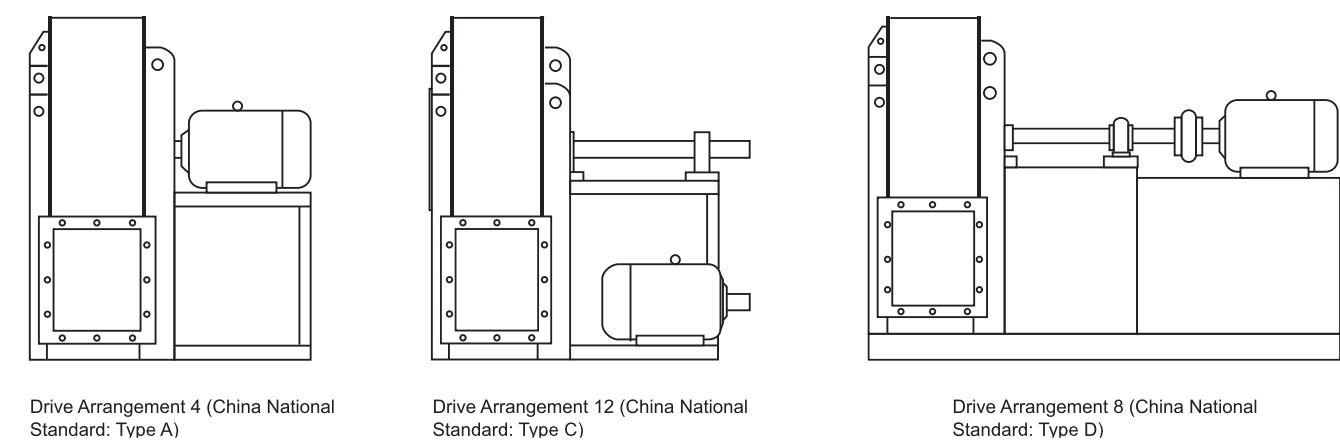
- Flexible allocation of multi-drive type
- Standard accessories for normal use
- Accessories completely to meet all kinds of application requirements



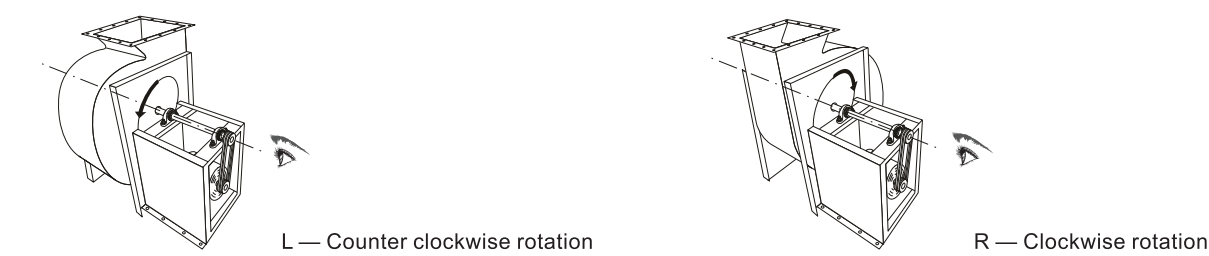
Naming Convention



Drive arrangements for centrifugal fans


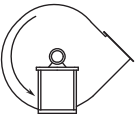
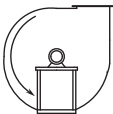
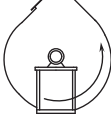
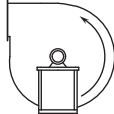
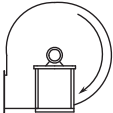
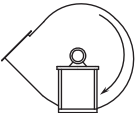
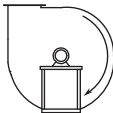

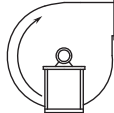


Designation For Rotation



Note: The rotation is identified from the view of fan drive (as shown in the above figure)

Designation of outlet position

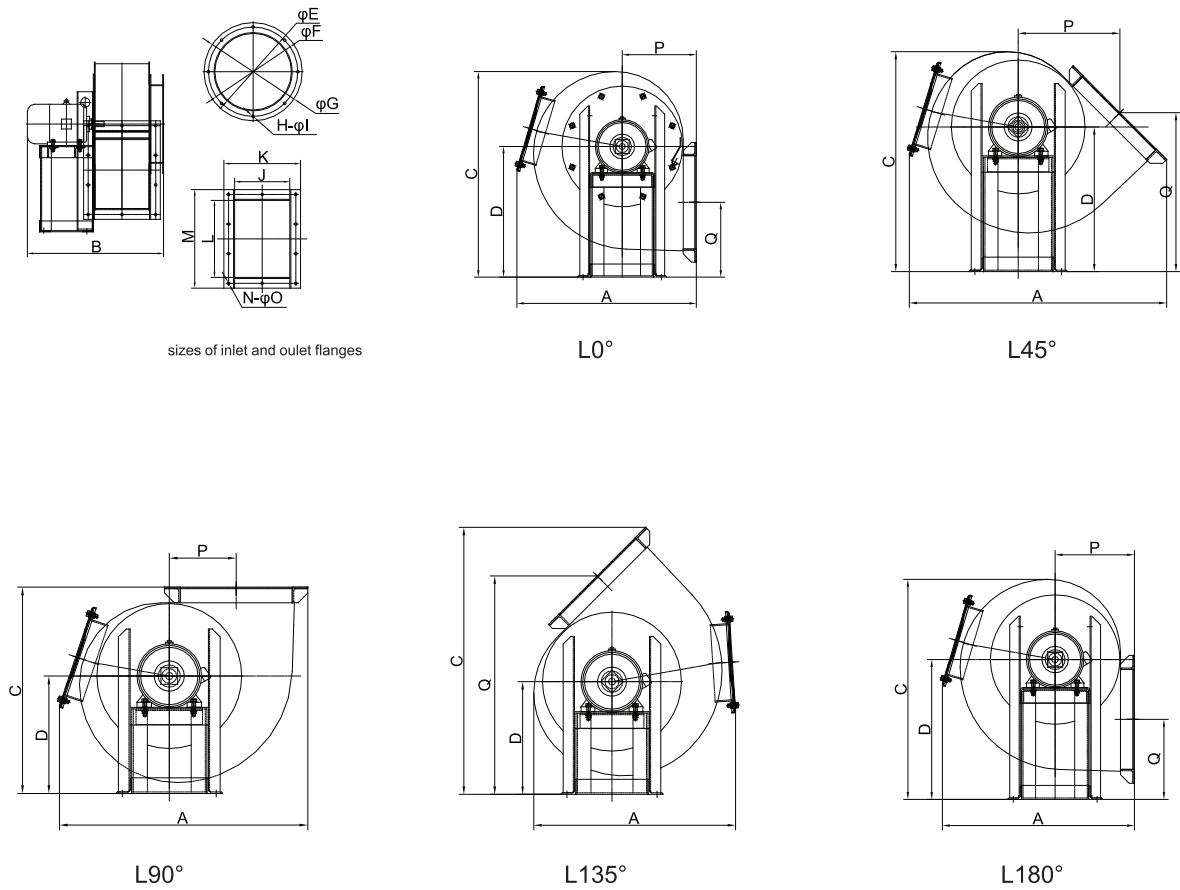
						
L0°	L45°	L90°	L135°	L180°		
						
R0°	R45°	R90°	R135°	R180°		
INFINAIR® standard	L	L0	L45	L90	L135	L180
China national standard	L	L0°	L45°	L90°	L135°	L180°
ISO standard	LG	LG 270	LG 315	LG 0	LG 45	LG 90
AMCA standard	CCW	CCW270	CCW315	CCW360	CCW45	CCW90
INFINAIR® standard	R	R0	R45	R90	R135	R180
China national standard	R	R0°	R45°	R90°	R135°	R180°
ISO standard	RD	RD 270	RD 315	RD 0	RD 45	RD 90
AMCA standard	CW	CW 270	CW 315	CW 360	CW 45	CW 90

Examples of naming, drive arrangements, rotating direction, outlet position

YFBCSL-630C1-11-R0

- Name meaning: centrifugal wheel with backward curved blades, single-inlet, centrifugal fan Type L, nominal wheel diameter is 630mm, wheel strength is class I, belt drive, 11kW motor.
- Drive arrangements: A12 (China National Standard: C Type).
- Selection of rotating direction: R indicates right-handed rotation (clockwise).
- Selection of outlet position: R0 indicates that 0 degree is selected for outlet position (China National Standard: right 0, ISO Standard: RD270, AMCA Standard: CW270).

Outline and Installation Dimensions of YFBCSL-280~1400 (A4)



sizes of inlet and outlet flanges

L90°

L135°

L180°

Note: drawing in R rotating direction and drawing in L rotating direction are distributed in the form of mirror image.

L0°/R0°Dimension table

Unit: mm

Model	A	B	C	D	E	F	G	H	I	J	K	L	M	N	O	P	Q
YFBCSL-280	550	510	630	400	285	332	365	8	10	201	285	282	366	10	10	227	229
YFBCSL-315	610	560	710	450	320	366	400	8	10	225	309	318	401	10	10	249	254
YFBCSL-355	670	660	740	450	361	405	441	8	10	254	336	358	441	10	10	273	235
YFBCSL-400	740	740	825	500	405	448	485	12	10	285	370	404	488	14	12	301	257
YFBCSL-450	830	880	925	560	455	497	535	12	10	320	405	454	538	14	12	333	287
YFBCSL-500	910	955	1075	610	505	551	585	12	10	356	437	504	588	14	12	365	309
YFBCSL-560	1020	811	1150	670	570	629	660	12	10	404	504	569	339	14	12	400	339
YFBCSL-630	1125	935	1270	750	640	698	730	12	10	454	554	639	739	22	12	450	375
YFBCSL-710	1250	1057	1415	850	720	775	810	16	12	514	614	720	820	24	12	500	419
YFBCSL-800	1385	1243	1585	950	810	861	902	16	12	576	702	812	938	26	12	562	468
YFBCSL-900	1550	1416	1815	1100	904	958	1004	16	12	647	773	914	1040	28	14	630	557
YFBCSL-1000	1730	1644	2000	1200	1007	1067	1107	24	12	718	844	1013	1139	32	14	710	590
YFBCSL-1120	1940	1675	2250	1350	1130	1200	1240	24	12	806	946	1136	1276	34	14	800	667
YFBCSL-1250	2165	1992	2520	1500	1260	1337	1370	24	12	898	1038	1267	1407	38	18	900	730
YFBCSL-1400	2405	2167	2725	1600	1410	1471	1520	32	12	1006	1166	1421	1581	44	18	1000	746

L45°/R45°Dimension table

Unit: mm

Model	A	B	C	D	E	F	G	H	I	J	K	L	M	N	O	P	Q
YFBCSL-280	715	510	610	400	285	332	365	8	10	201	285	282	366	10	10	282	440
YFBCSL-315	795	560	685	450	320	366	400	8	10	225	309	318	401	10	10	315	486
YFBCSL-355	870	660	710	450	361	405	441	8	10	254	336	358	441	10	10	346	491
YFBCSL-400	965	740	795	500	405	448	485	12	10	285	370	404	488	14	12	385	541
YFBCSL-450	1085	880	890	560	455	497	535	12	10	320	405	454	538	14	12	429	603
YFBCSL-500	1185	955	1040	610	505	551	585	12	10	356	437	504	588	14	12	471	656
YFBCSL-560	1290	811	1070	670	570	629	660	12	10	404	504	569	339	14	12	517	719
YFBCSL-630	1440	935	1200	750	640	698	730	12	10	454	554	639	739	22	12	584	803
YFBCSL-710	1615	1057	1355	850	720	775	810	16	12	514	614	720	820	24	12	659	899
YFBCSL-800	1820	1243	1515	950	810	861	902	16	12	576	702	812	938	26	12	741	1010
YFBCSL-900	2035	1416	1740	1100	904	958	1004	16	12	647	773	914	1040	28	14	830	1162
YFBCSL-1000	2270	1644	1920	1200	1007	1067	1107	24	12	718	844	1013	1139	32	14	934	1271
YFBCSL-1120	2535	1675	2160	1350	1130	1200	1240	24	12	806	946	1136	1276	34	14	1049	1433
YFBCSL-1250	2835	1992	2420	1500	1260	1337	1370	24	12	898	1038	1267	1407	38	18	1181	1592
YFBCSL-1400	3130	2167	2620	1600	1410	1471	1520	32	12	1006	1166	1421	1581	44	18	1311	1704

L90°/R90°Dimension table

Unit: mm

Model	A	B	C	D	E	F	G	H	I	J	K	L	M	N	O	P	Q
YFBCSL-280	640	510	530	300	285	332	365	8	10	201	285	282	366	10	10	171	-
YFBCSL-315	710	560	600	350	320	366	400	8	10	225	309	318	401	10	10	196	-
YFBCSL-355	780	660	625	350	361	405	441	8	10	254	336	358	441	10	10	215	-
YFBCSL-400	865	740	705	400	405	448	485	12	10	285	370	404	488	14	12	243	-
YFBCSL-450	970	880	785	450	455	497	535	12	10	320	405	454	538	14	12	273	-
YFBCSL-500	1065	955	930	500	505	551	585	12	10	356	437	504	588	14	12	301	-
YFBCSL-560	1110	811	950	550	570	629	660	12	10	404	504	569	339	14	12	331	-
YFBCSL-630	1240	935	1070	620	640	698	730	12	10	454	554	639	739	22	12	375	-
YFBCSL-710	1400	1057	1200	700	720	775	810	16	12	514	614	720	820	24	12	431	-
YFBCSL-800	1575	1243	1370	800	810	861	902	16	12	576	702	812	938	26	12	482	-
YFBCSL-900	1835	1416	1530	900	904	958	1004	16	12	647	773	914	1040	28	14	543	-
YFBCSL-1000	2045	1644	1710	1000	1007	1067	1107	24	12	718	844	1013	1139	32	14	610	-
YFBCSL-1120	2285	1675	1900	1100	1130	1200	1240	24	12	806	946	1136	1276	34	14	683	-
YFBCSL-1250	2550	1992	2200	1300	1260	1337	1370	24	12	898	1038	1267	1407	38	18	770	-
YFBCSL-1400	2860	2167	2350	1350	1410	1471	1520	32	12	1006	1166	1421	1581	44	18	852	-

L135°/R135°Dimension table

Unit: mm

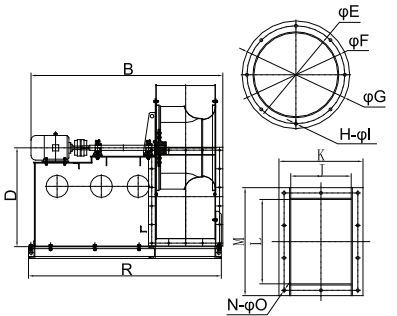
Model	A	B	C	D	E	F	G	H	I	J	K	L	M	N	O	P	Q
YFBCSL-280	540	510	715	300	285	332	365	8	10	201	285	282	366	10	10	-	582
YFBCSL-315	610	560	810	350	320	366	400	8	10	225	309	318	401	10	10	-	678
YFBCSL-355	670	660	855	350	361	405	441	8	10	254	336	358	441	10	10	-	696
YFBCSL-400	750	740	960	400	405	448	485	12	10	285	370	404	488	14	12	-	785
YFBCSL-450	840	880	1075	450	455	497	535	12	10	320	405	454	538	14	12	-	876
YFBCSL-500	930	955	1245	500	505	551	585	12	10	356	437	504	588	14	12	-	971
YFBCSL-560	1030	811	1255	500	570	629	660	12	10	404	504	569	339	14	12	-	1017
YFBCSL-630	1140	935	1415	570	640	698	730	12	10	454	554	639	739	22	12	-	1154
YFBCSL-710	1280	1057	1590	640	720	775	810	16	12	514	614	720	820	24	12	-	1299
YFBCSL-800	1425	1243	1825	750	810	861	902	16	12	576	702	812	938	26	12	-	1591
YFBCSL-900	1590	1416	2050	850	904	958	1004	16	12	647	773	914	1040	28	14	-	1680
YFBCSL-1000	1780	1644	2240	900	1007	1067	1107	24	12	718	844	1013	1139	32	14	-	1835
YFBCSL-1120	2000	1675	2500	1000	1130	1200	1240	24	12	806	946	1136	1276	34	14	-	2049
YFBCSL-1250	2250	1992	2880	1200	1260	1337	1370	24	12	898	1038	1267	1407	38	18	-	2381
YFBCSL-1400	2520	2167	3120	1250	1410	1471	1520	32	12	1006	1166	1421	1581	44	18	-	2561

L180°/R180°Dimension table

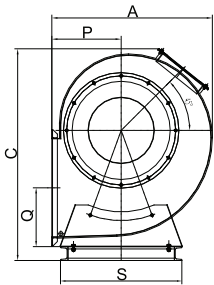
Unit: mm

Model	A	B	C	D	E	F	G	H	I	J	K	L	M	N	O	P	Q
YFBCSL-280	540	510	660	300	285	332	365	8	10	201	285	282	366	10	10	227	471
YFBCSL-315	595	560	750	350	320	366	400	8	10	225	309	318	401	10	10	249	546

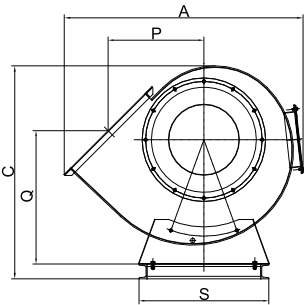
Outline and Installation Dimensions of YFBCSL-560~2000 (A8)



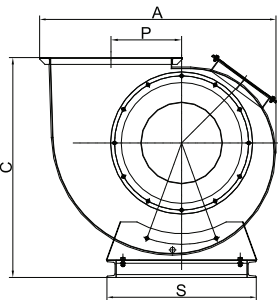
sizes of inlet and outlet flanges



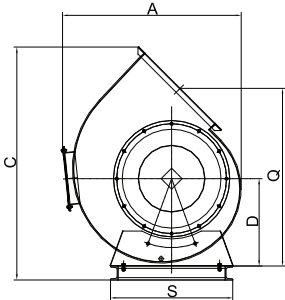
L0°



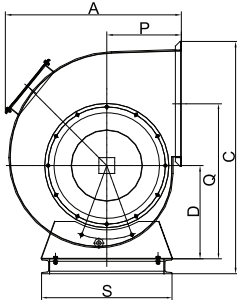
L45°



L90°



L135°



L180°

Note: drawing in R rotating direction and drawing in L rotating direction are distributed in the form of mirror image.

L0°/R0° Dimension table

Unit: mm

Model	A	B	C	D	E	F	G	H	I	J	K	L	M	N	O	P	Q	R	S
YFBCSL-560	1020	1370	1230	670	570	629	660	12	10	404	504	569	339	14	12	400	339	1385	700
YFBCSL-630	1125	1560	1350	750	640	698	730	12	10	454	554	639	739	22	12	450	375	1515	750
YFBCSL-710	1250	1975	1495	850	720	775	810	16	12	514	614	720	820	24	12	500	419	1905	850
YFBCSL-800	1385	2120	1685	950	810	861	902	16	12	576	702	812	938	26	12	562	468	2025	950
YFBCSL-900	1550	2350	1915	1100	904	958	1004	16	12	647	773	914	1040	28	14	630	557	2250	1100
YFBCSL-1000	1730	2665	2100	1200	1007	1067	1107	24	12	718	844	1013	1139	32	14	710	590	2535	1200
YFBCSL-1120	1940	2845	2370	1350	1130	1200	1240	24	12	806	946	1136	1276	34	14	800	667	2730	1350
YFBCSL-1250	2165	3190	2640	1500	1260	1337	1370	24	12	898	1038	1267	1407	38	18	900	730	3060	1500
YFBCSL-1400	2405	3540	2865	1600	1410	1471	1520	32	12	1006	1166	1421	1581	44	18	1000	746	3385	1760
YFBCSL-1600	2740	4105	3315	1900	1610	1663	1730	32	14	1150	1290	1622	1753	28	22	1145	924	3855	1850
YFBCSL-1800	3060	4330	3715	2120	1810	1856	1930	32	14	1295	1427	1825	1946	32	22	1265	1054	4070	1950
YFBCSL-2000	3425	5165	4075	2360	2010	2073	2130	32	14	1439	1581	2028	2163	34	22	1400	1165	4665	2150

L45°/R45° Dimension table

Unit: mm

Model	A	B	C	D	E	F	G	H	I	J	K	L	M	N	O	P	Q	R	S
YFBCSL-560	1290	1370	1150	670	570	629	660	12	10	404	504	569	339	14	12	517	719	1385	700
YFBCSL-630	1440	1560	1280	750	640	698	730	12	10	454	554	639	739	22	12	584	803	1515	750
YFBCSL-710	1615	1975	1435	850	720	775	810	16	12	514	614	720	820	24	12	659	899	1905	850
YFBCSL-800	1820	2120	1615	950	810	861	902	16	12	576	702	812	938	26	12	741	1010	2025	950
YFBCSL-900	2035	2350	1840	1100	904	958	1004	16	12	647	773	914	1040	28	14	830	1162	2250	1100
YFBCSL-1000	2270	2665	2020	1200	1007	1067	1107	24	12	718	844	1013	1139	32	14	934	1271	2535	1200
YFBCSL-1120	2535	2845	2285	1350	1130	1200	1240	24	12	806	946	1136	1276	34	14	1049	1433	2730	1350
YFBCSL-1250	2835	3190	2545	1500	1260	1337	1370	24	12	898	1038	1267	1407	38	18	1181	1592	3060	1500
YFBCSL-1400	3130	3540	2760	1600	1410	1471	1520	32	12	1006	1166	1421	1581	44	18	1311	1704	3385	1760
YFBCSL-1600	3575	4105	3010	1700	1610	1663	1730	32	14	1150	1290	1622	1753	28	22	1500	1820	3855	1850
YFBCSL-1800	3935	4330	3370	1900	1810	1856	1930	32	14	1295	1427	1825	1946	32	22	1670	2020	4070	1950
YFBCSL-2000	4470	5165	3710	2100	2010	2073	2130	32	14	1439	1581	2028	2163	34	22	1875	2250	4665	2150

L90°/R90° Dimension table

Unit: mm

Model	A	B	C	D	E	F	G	H	I	J	K	L	M	N	O	P	Q	R	S
YFBCSL-560	1110	1370	1030	550	570	629	660	12	10	404	504	569	339	14	12	331	-	1385	700
YFBCSL-630	1240	1560	1150	620	640	698	730	12	10	454	554	639	739	22	12	375	-	1515	750
YFBCSL-710	1400	1975	1280	700	720	775	810	16	12	514	614	720	820	24	12	431	-	1905	850
YFBCSL-800	1575	2120	1470	800	810	861	902	16	12	576	702	812	938	26	12	482	-	2025	950
YFBCSL-900	1835	2350	1630	900	904	958	1004	16	12	647	773	914	1040	28	14	543	-	2250	1100
YFBCSL-1000	2045	2665	1810	1000	1007	1067	1107	24	12	718	844	1013	1139	32	14	610	-	2535	1200
YFBCSL-1120	2285	2845	2025	1100	1130	1200	1240	24	12	806	946	1136	1276	34	14	683	-	2730	1350
YFBCSL-1250	2550	3190	2325	1300	1260	1337	1370	24	12	898	1038	1267	1407	38	18	770	-	3060	1500
YFBCSL-1400	2860	3540	2490	1350	1410	1471	1520	32	12	1006	1166	1421	1581	44	18	852	-	3385	1760
YFBCSL-1600	3270	4105	2865	1600	1610	1663	1730	32	14	1150	1290	1622	1753	28	22	972	-	3855	1850
YFBCSL-1800	3525	4330	3225	1800	1810	1856	1930	32	14	1295	1427	1825	1946	32	22	1098	-	4070	1950
YFBCSL-2000	4085	5165	3545	1950	2010	2073	2130	32	14	1439	1581	2028	2163	34	22	1215	-	4665	2150

L135°/R135° Dimension table

Unit: mm

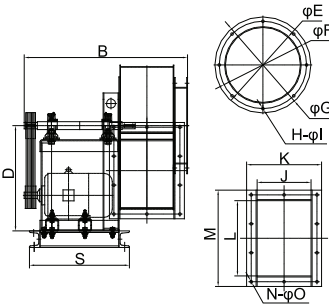
Model	A	B	C	D	E	F	G	H	I	J	K	L	M	N	O	P	Q	R	S
YFBCSL-560	1030	1370	1335	500	570	629	660	12	10	404	504	569	339	14	12	-	1017	1385	700
YFBCSL-630	1140	1560	1495	570	640	698	730	12	10	454	554	639	739	22	12	-	1154	1515	750
YFBCSL-710	1280	1975	1670	640	720	775	810	16	12	514	614	720	820	24	12	-	1299	1905	850
YFBCSL-800	1425	2120	1925	750	810	861	902	16	12	576	702	812	938	26	12	-	1591	2025	950
YFBCSL-900	1590	2350	2150	850	904	958	1004	16	12	647	773	914	1040	28	14	-	1680	2250	1100
YFBCSL-1000	1780	2665	2340	900	1007	1067	1107	24	12	718	844	1013	1139	32	14	-	1835	2535	1200
YFBCSL-1120	2000	2845	2625	1000	1130	1200	1240	24	12	806	946	1136	1276	34	14	-	2049	2730	1350
YFBCSL-1250	2250	3190	3005	1200	1260	1337	1370	24	12	898	1038	1267	1407	38	18	-	2381	3060	1500
YFBCSL-1400	2520	3540	3260	1250	1410	1471	1520	32	12	1006	1166	1421	1581	44	18	-	2561	3385	1760
YFBCSL-1600	2775	4105	3780	1500	1610	1663	1730	32	14	1150	1290	1622	1753	28	22	-	2999	3855	1850
YFBCSL-1800	3195	4330	4215	1650	1810	1856	1930	32	14	1295	1427	1825	1946	32	22	-	3335	4070	1950
YFBCSL-2000	3470	5165	4630	1800	2010	2073	2130	32	14	1439	1581	2028	2163	34	22	-	3670	4665	2150

L180°/R180° Dimension table

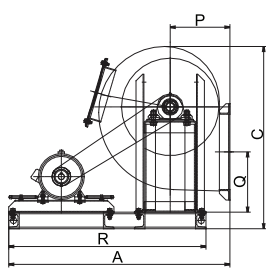
Unit: mm

Model	A	B	C	D	E	F	G	H	I	J	K	L	M	N	O	P	Q	R	S
YFBCSL-560	945	1370	1250	500	570	629	660	12	10	404	504	569	339	14	12	400	831	1385	700
YFBCSL-630	1040	1560	1395	570	640	698	730	12	10	454	554	639	739	22	12	450	945	1515	750
YFBCSL-710	1165	1975	1565	640	720	775	810	16	12	514	614	720	820	24	12	500	1071	1905	850
YFBCSL-800	1310	2120	1805	750	810	861	902	16	12	576	702	812	938	26	12	566	1232	2025	950
YFBCSL-900	1520	2350	2015	850	904	958	1004	16	12	647	773	914	1040	28	14	630	1393	2250	1100
YFBCSL-1000	1700	2665	2180	900	1007	1067	1107	24	12	718	844	1013	1139	32	14	710	1510	2535	1200
YFBCSL-1120	1915	2845	2450	1000	1130	1200	1240	24	12	806	946	1136	1276	34	14	800	1683	2730	1350
YFBCSL-1250	2145	3190	2800	1200	1260	1337	1370	24	12	898	1038	1267	1407	38	18	900	1970	3060	1500
YFBCSL-1400	2395	3540	2930	1250	1410	1471	1520	32	12	1006	1166	1421	1581	44	18	1000	2104	3385	1760
YFBCSL-1600	2645	4105	3370	1350	1610	1663	1730	32	14	1150	1290	1622	1753	28	22	1145	2326	3855	1850
YFBCSL-1800	2950	4330	3805	1550	1810	1856	1930	32	14	1295	1427	1825	1946	32	22	1265	2648	4070	1950
YFBCSL-2000	3305	5165	4210	1700	2010	2073	2130	32	14	1439	1581	2028	2163	34	22	1425	2920	4665	2150

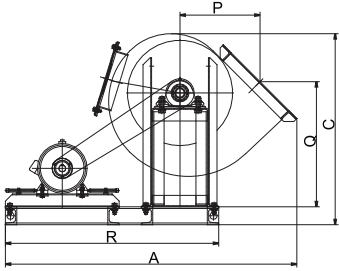
Outline and Installation Dimensions of YFBCSL-280~2000 (A12)



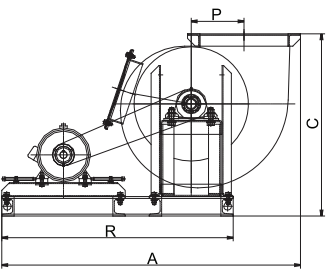
sizes of inlet and outlet flanges



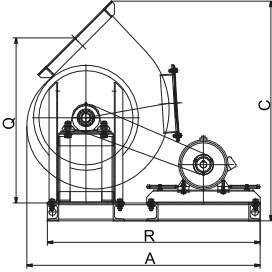
L0°



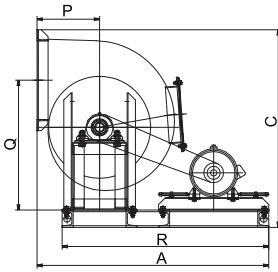
L45°



L90°



L135°



L180°

Note: drawing in R rotating direction and drawing in L rotating direction are distributed in the form of mirror image.

L0°/R0°Dimension table

Unit: mm

Model	A	B	C	D	E	F	G	H	I	J	K	L	M	N	O	P	Q	R	S
YFBCSL-280	930	625	700	400	285	332	365	8	10	201	285	282	366	10	10	227	229	830	340
YFBCSL-315	950	650	770	450	320	366	400	8	10	225	309	318	401	10	10	249	254	950	430
YFBCSL-355	1170	820	800	450	361	405	441	8	10	254	336	358	441	10	10	273	235	1070	470
YFBCSL-400	1230	870	890	500	405	448	485	12	10	285	370	404	488	14	12	301	257	1100	470
YFBCSL-450	1300	905	990	560	455	497	535	12	10	320	405	454	538	14	12	333	287	1150	470
YFBCSL-500	1420	1040	1080	610	505	551	590	12	10	356	437	504	588	14	12	365	309	1280	520
YFBCSL-560	1450	1220	1195	670	570	629	660	12	10	404	504	569	669	14	12	400	339	1400	1120
YFBCSL-630	1650	1260	1325	750	640	698	730	12	10	454	554	639	739	22	12	450	375	1575	1170
YFBCSL-710	1725	1320	1488	850	720	775	810	16	12	514	614	720	820	24	12	500	419	1650	1180
YFBCSL-800	1990	1415	1675	950	810	861	902	16	12	576	702	812	938	28	12	562	468	1900	1330
YFBCSL-900	2100	1480	1905	1100	904	958	1004	16	12	647	773	914	1040	28	14	630	557	2020	1400
YFBCSL-1000	2330	1620	2095	1200	1007	1067	1107	24	12	718	844	1013	1139	32	14	710	590	2220	1510
YFBCSL-1120	2520	1900	2370	1350	1130	1200	1240	24	12	806	946	1136	1276	34	14	800	667	2395	1795
YFBCSL-1250	2750	1990	2635	1500	1260	1337	1370	24	12	898	1038	1267	1407	38	18	900	730	2600	1885
YFBCSL-1400	3020	2175	2855	1600	1410	1471	1520	32	12	1006	1166	1421	1581	44	18	1000	746	2900	2045
YFBCSL-1600	3345	2525	3315	1900	1610	1663	1730	32	14	1150	1310	1622	1753	28	22	1145	924	3210	2340
YFBCSL-1800	3860	2750	3715	2120	1810	1856	1930	32	14	1295	1455	1825	1985	32	22	1265	1054	3725	2490
YFBCSL-2000	4355	2905	4075	2360	2010	2073	2130	32	14	1439	1599	2028	2188	34	22	1400	1165	4145	2645

L45°/R45°Dimension table

Unit: mm

Model	A	B	C	D	E	F	G	H	I	J	K	L	M	N	O	P	Q	R	S
YFBCSL-280	1110	625	675	400	285	332	365	8	10	201	285	282	366	10	10	282	440	830	340
YFBCSL-315	1275	650	750	450	320	366	400	8	10	225	309	318	401	10	10	315	486	950	430
YFBCSL-355	1400	820	775	450	361	405	441	8	10	254	336	358	441	10	10	346	491	1070	470
YFBCSL-400	1490	870	860	500	405	448	485	12	10	285	370	404	488	14	12	385	541	1100	470
YFBCSL-450	1580	905	955	560	455	497	535	12	10	320	405	454	538	14	12	429	603	1150	470
YFBCSL-500	1735	1040	1040	610	505	551	590	12	10	356	437	504	588	14	12	471	656	1280	520
YFBCSL-560	1805	1220	1150	670	570	629	660	12	10	404	504	569	669	14	12	517	719	1400	1120
YFBCSL-630	2045	1260	1200	750	640	698	730	12	10	454	554	639	739	22	12	584	803	1575	1170
YFBCSL-710	2175	1320	1435	850	720	775	810	16	12	514	614	720	820	24	12	659	899	1650	1180
YFBCSL-800	2500	1415	1615	950	810	861	902	16	12	576	702	812	938	28	12	741	1010	1900	1330
YFBCSL-900	2670	1480	1840	1100	904	958	1004	16	12	647	773	914	1040	28	14	830	1162	2020	1400
YFBCSL-1000	2960	1620	2020	1200	1007	1067	1107	24	12	718	844	1013	1139	32	14	934	1271	2220	1510
YFBCSL-1120	3220	1900	2290	1350	1130	1200	1240	24	12	806	946	1136	1276	34	14	1049	1433	2395	1795
YFBCSL-1250	3530	1990	2545	1500	1260	1337	1370	24	12	898	1038	1267	1407	38	18	1181	1592	2600	1885
YFBCSL-1400	3890	2175	2760	1600	1410	1471	1520	32	12	1006	1166	1421	1581	44	18	1311	1704	2900	2045
YFBCSL-1600	4310	2525	3010	1700	1610	1663	1730	32	14	1150	1310	1622	1753	28	22	1500	1820	3210	2340
YFBCSL-1800	4965	2750	3370	1900	1810	1856	1930	32	14	1295	1455	1825	1985	32	22	1670	2020	3725	2490
YFBCSL-2000	5595	2905	3710	2100	2010	2073	2130	32	14	1439	1599	2028	2188	34	22	1875	2250	4145	2645

L90°/R90°Dimension table

Unit: mm

Model	A	B	C	D	E	F	G	H	I	J	K	L	M	N	O	P	Q	R	S
YFBCSL-280	1050	625	590	300	285	332	365	8	10	201	285	282	366	10	10	171	-	830	340
YFBCSL-315	1215	650	665	350	320	366	400	8	10	225	309	318	401	10	10	196	-	950	430
YFBCSL-355	1335	820	690	350	361	405	441	8	10	254	336	358	441	10	10	215	-	1070	470
YFBCSL-400	1420	870	770	400	405	448	485	12	10	285	370	404	488	14	12	243	-	1100	470
YFBCSL-450	1505	905	850	450	455	497	535	12	10	320	405	454	538	14	12	273	-	1150	470
YFBCSL-500	1650	1040	930	500	505	551	590	12	10	356	437	504	588	14	12	301	-	1280	520
YFBCSL-560	1720	1220	1030	550	570	629	660	12	10	404	504	569	669	14	12	331	-	1400	1120
YFBCSL-630	1945	1260	1150	620	640	698	730	12	10	454	554	639	739	22	12	375	-	1575	1170
YFBCSL-710	2070	1320	1280	700	720	775	810	16	12	514	614	720	820	24	12	431	-	1650	1180
YFBCSL-800	2330	1415	1470	800	810	861	902	16	12	576	702	812	938	28	12	482	-	1850	1330
YFBCSL-900	2535	1480	1630	900	904	958	1004	16	12	647	773	914	1040	28	14	543	-	2020	1400
YFBCSL-1000	2800	1620	1810	1000	1007	1067	1107	24	12	718	844	1013	1139	32	14	610	-	2220	1510
YFBCSL-1120	3070	1900	2030	1100	1130	1200	1240	24	12	806	946	1136	1276	34	14	683	-	2420	1795
YFBCSL-1250	3325	1990	2330	1300	1260	1337	1370	24	12	898	1038	1267	1407	38	18	770	-	2600	1885
YFBCSL-1400	3665	2175	2495	1350	1410	1471	1520	32	12	1006	1166	1421	1581	44	18	852	-	2900	2045
YFBCSL-1600	4080	2525	2865	1600	1610	1663	1730	32	14	1150	1310	1622	1753	28	22	972	-	3210	2340
YFBCSL-1800	4685	2750	3225	1800	1810	1856	1930	32	14	1295	1455	1825	1985	32	22	1098	-	3725	2490
YFBCSL-2000	5250	2905	3545	1950	2010	2073	2130	32	14	1439	1599	2028	2188	34	22	1215	-	4145	2645

L135°/R135°Dimension table

Unit: mm

Model	A	B	C	D	E	F	G	H	I	J	K	L	M	N	O	P	Q	R	S
YFBCSL-280	1030	625	780	300	285	332	365	8	10	201	285	282	366	10	10	-	582	830	340
YFBCSL-315	1185	650	870	350	320	366	400	8	10	225	309	318	401	10	10	-	678	950	430
YFBCSL-355	1305	820	915	350	361	405	441	8	10	254	336	358	441	10	10	-	696	1070	470
YFBCSL-400	1385	870	1025	400	405	448	485	12	10	285	370	404	488	14	12	-	785	1100	470
YFBCSL-450	1470	905	1135	450	455	497	535	12	10	320	405	454	538	14	12	-	876	1150	470
YFBCSL-500	1620	1040	1245	500	505	551	590	12	10	356	437	504	588	14	12	-	971	1280	520
YFBCSL-560	1450	1220	1335	500	570	629	660	12	10	404	504	569	669	14	12	-	1017	1400	1120
YFBCSL-630	1650	1260	1495	570	640	698	730	12	10	454	554	639	739	22	12	-	1154	1575	1170
YFBCSL-710	1780	1320	1670	640	720	775	810	16	12	514	614	720	820	24	12	-	1299	1700	1180
YFBCSL-800	1965	1415	1925	750	810	861	902	16	12	576	702	812	938	28	12	-	1591	1875	1330
YFBCSL-900	2260	1480	2150	850	904	958	1004	16	12	647	773	914	1040	28	14	-	1680	2170	1400
YFBCSL-1000	2390	1620	2340	900	1007	1067	1107	24	12	718	844	1013	1139	32	14	-	1835	2270	1510
YFBCSL-1120	2605	1900	2630	1000	1130	1200	1240	24	12	806	946	1136	1276	34	14	-	2049	2470	1795
YFBCSL-1250	2970	1990	3005	1200	1260	1337	1370	24	12	898	1038	1267	1407	38	18	-	2381	2800	1885
YFBCSL-1400	3070	2175	3265	1250	1410	1471	1520	32	12	1006	1166	1421	1581	44	18	-	2561	2930	2045
YFBCSL-1600	3340	2525	3780	1500	1610	1663	1730	32	14	1150	1310	1622	1753	28	22	-	2999	3180	2340
YFBCSL-1800	4015	2750	4215	1650	1810	1856	1930	32	14	1295	1455	1825	1985	32	22	-	3335	3765	2490
YFBCSL-2000	4380	2905	4630	1800	2010	2073	2130	32	14	1439	1599	2028	2188	34	22	-	3670	4185	2645

Fan approx. weight (kg)

<div>Drive arr.</div> <div>Model</div>	A4	A8	A12
YFBCSL-280	59	-	68
YFBCSL-315	72	-	84
YFBCSL-355	79	-	88
YFBCSL-400	101	-	115
YFBCSL-450	114	-	134
YFBCSL-500	125	-	160
YFBCSL-560	149	207	225
YFBCSL-630	175	262	258
YFBCSL-710	247	408	328
YFBCSL-800	355	526	490
YFBCSL-900	440	715	580
YFBCSL-1000	556	905	720
YFBCSL-1120	806	1345	1140
YFBCSL-1250	998	1480	1290
YFBCSL-1400	1350	2526	1920
YFBCSL-1600	-	3215	2308
YFBCSL-1800	-	3925	2776
YFBCSL-2000	-	5246	3390

Notes: Motor weight is not included in the table

Motor approx. weight (kg) 50/60 Hz

<div>Poles</div> <div>Power(kW)</div>	2P	4P	6P	8P	10P
0.18	14	13.5	14	16	
0.25	14.5	14	14.5	17	
0.37	15	14.5	16	24	
0.55	15.5	15	17	28	
0.75	15	16	22	30	
1.1	16	21	24	32	
1.5	21	23	32	40	
2.2	24	33	41	64	
3	33	35	63	78	
4	41	41	72	105	
5.5	63	65	81	115	
7.5	70	76	118	145	
11	110	118	145	160	
15	120	132	178	228	
18.5	135	164	200	242	
22	165	182	228	265	
30	218	245	265	368	
37	230	258	370	470	
45	280	290	490	538	818
55	365	388	540	900	928
75	495	510	900	1000	1080
90	565	606	980	1055	1200
110	890	910	1045	1118	1800
132	980	1000	1100	2000	2000
160	1055	1055	1550	2150	2500
200	1110	1178	1600	2250	
250	1900	1700	1700		
315	2300	1900	1900		

Notes: Due to different weights of motors of different brands, motor weights in the table are only for reference.

Standard Accessories

- Access door

Check the rotation of the wheel, and clear attachments on the wheel to ensure the dynamic balance of the wheel.
- Full-closed shaft cover

Protect the shaft from external damage so as to reduce the maintenance cost and improve the operating efficiency.
- Half-closed belt cover

Guarantee the personnel security make sure that the belt can operate normally.
- Absorber pedestal

Realizing even distribution of the weight of the fan, so as to avoid local stress concentration and ensure smooth operation of the fan.
- Shear-proof spring absorber

Down-load fan dynamic load to prevent fan from moving horizontally and make sure that the fan operate smoothly and decrease the fan running noise.

Optional Accessories

- Full-closed belt cover

Guarantee the personnel security make sure that the belt can operate normally.
- Epoxy motor weather hood

Protect motor from rain and snow assault and extend the motor life.
- Outlet/inlet companion flange

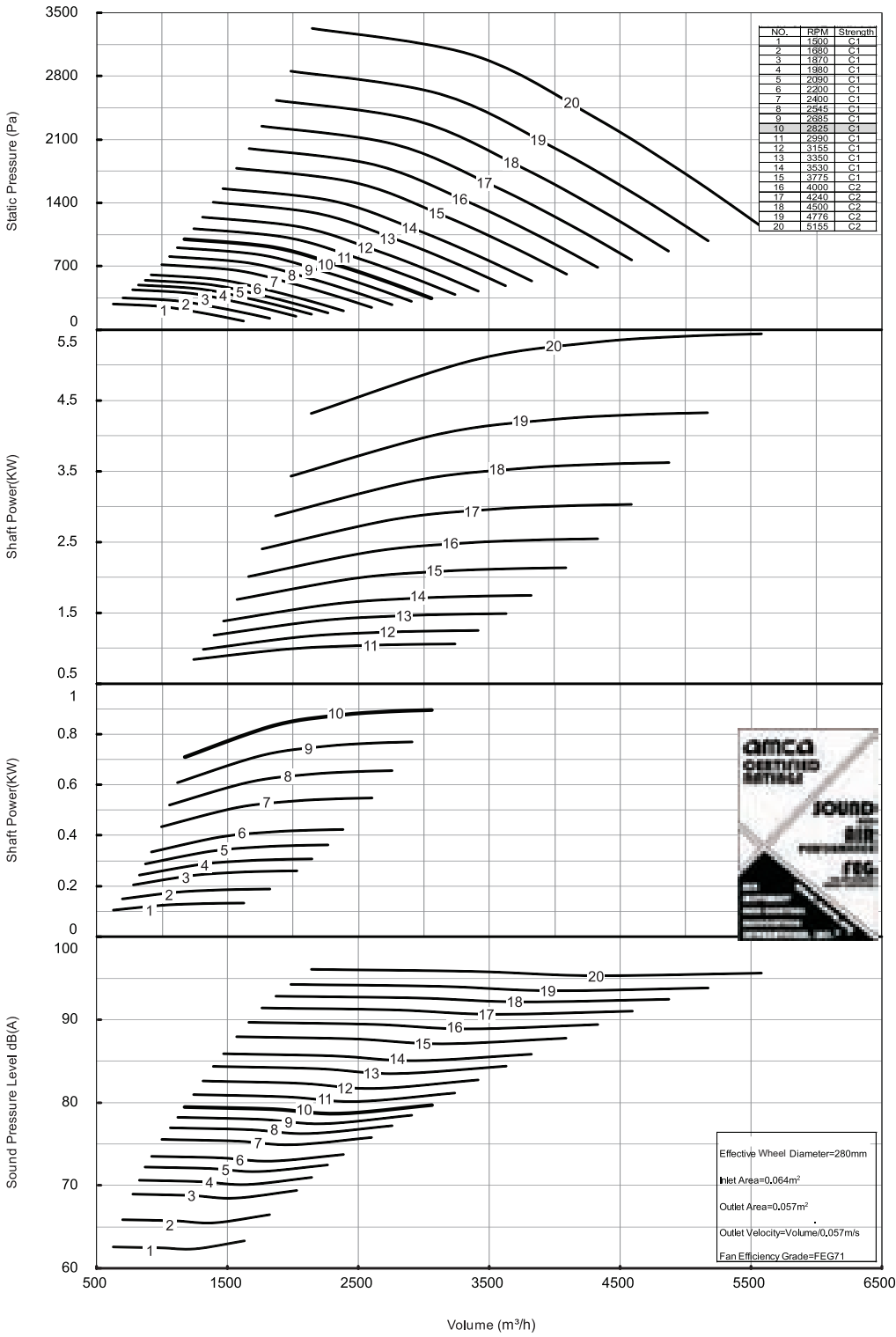
It is a necessary part for connection of the fan and the air duct, and conducive to installation and removal of the air duct.
- Outlet/inlet silencer

Be installed at the inlet or outlet and is made of galvanized steel. By adopting the silencer, the noise of the fan can be reduced effectively, and the operating efficiency of the fan can be increased.
- Stainless wheel

Stainless steel material with high capability of corrosion resistance and good mechanical performance, the temperature can be up to 400°C. Thus it's suitable for cases of corrosion resistance and high temperature.

YFBCSL-280 Performance data

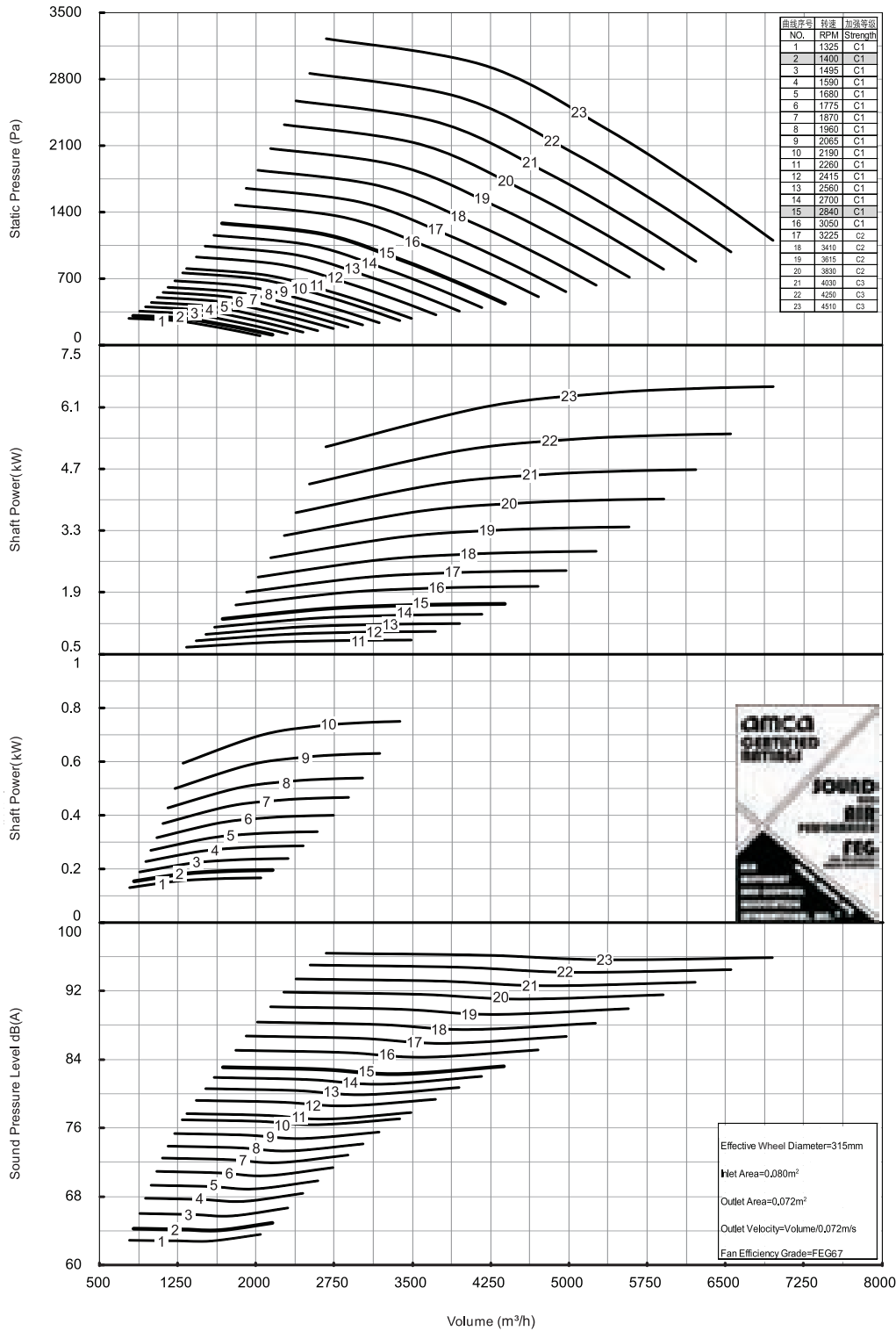
performance parameters under standard condition (20°C). The rotation speed is nominal value. 280



Performance certified is for installation type B - free inlet, ducted outlet. Power rating (kW) does not include transmission losses. Performance ratings do not include the effects of appurtenances (accessories). Values shown are for inlet LwA sound power levels for Installation Type B: Free inlet, ducted outlet. The sound power level ratings shown are in decibels, referred to 10⁻¹² watts, calculated per AMCA International Standard 301. The A-weighted sound ratings shown have been calculated per AMCA International Standard 301. dB(A) A-weighted sound pressure level is based on 11.5 dB sound attenuation per octave band at 1.5 m. Note that dB(A) levels are not licensed by AMCA International.

YFBCSL-315 Performance data

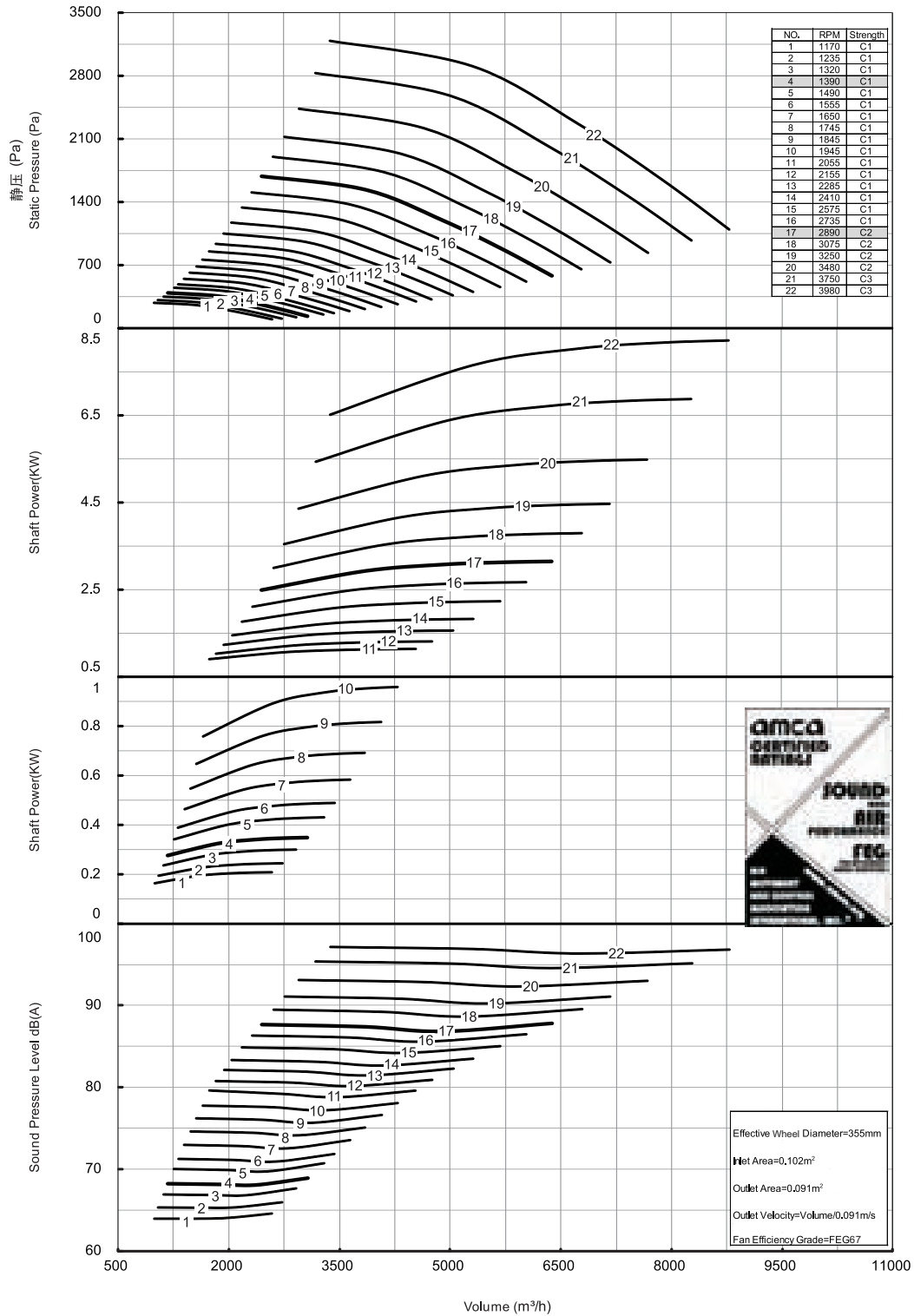
Note: The following are performance parameters under standard condition (20°C). The rotation speed is nominal value.



Performance certified is for installation type B - free inlet, ducted outlet. Power rating (kW) does not include transmission losses. Performance ratings do not include the effects of appurtenances (accessories). Values shown are for inlet LwA sound power levels for Installation Type B: Free inlet, ducted outlet. The sound power level ratings shown are in decibels, referred to 10⁻¹² watts, calculated per AMCA International Standard 301. The A-weighted sound ratings shown have been calculated per AMCA International Standard 301. dB(A) A-weighted sound pressure level is based on 11.5 dB sound attenuation per octave band at 1.5 m. Note that dB(A) levels are not licensed by AMCA International.

YFBCSL-355 Performance Data

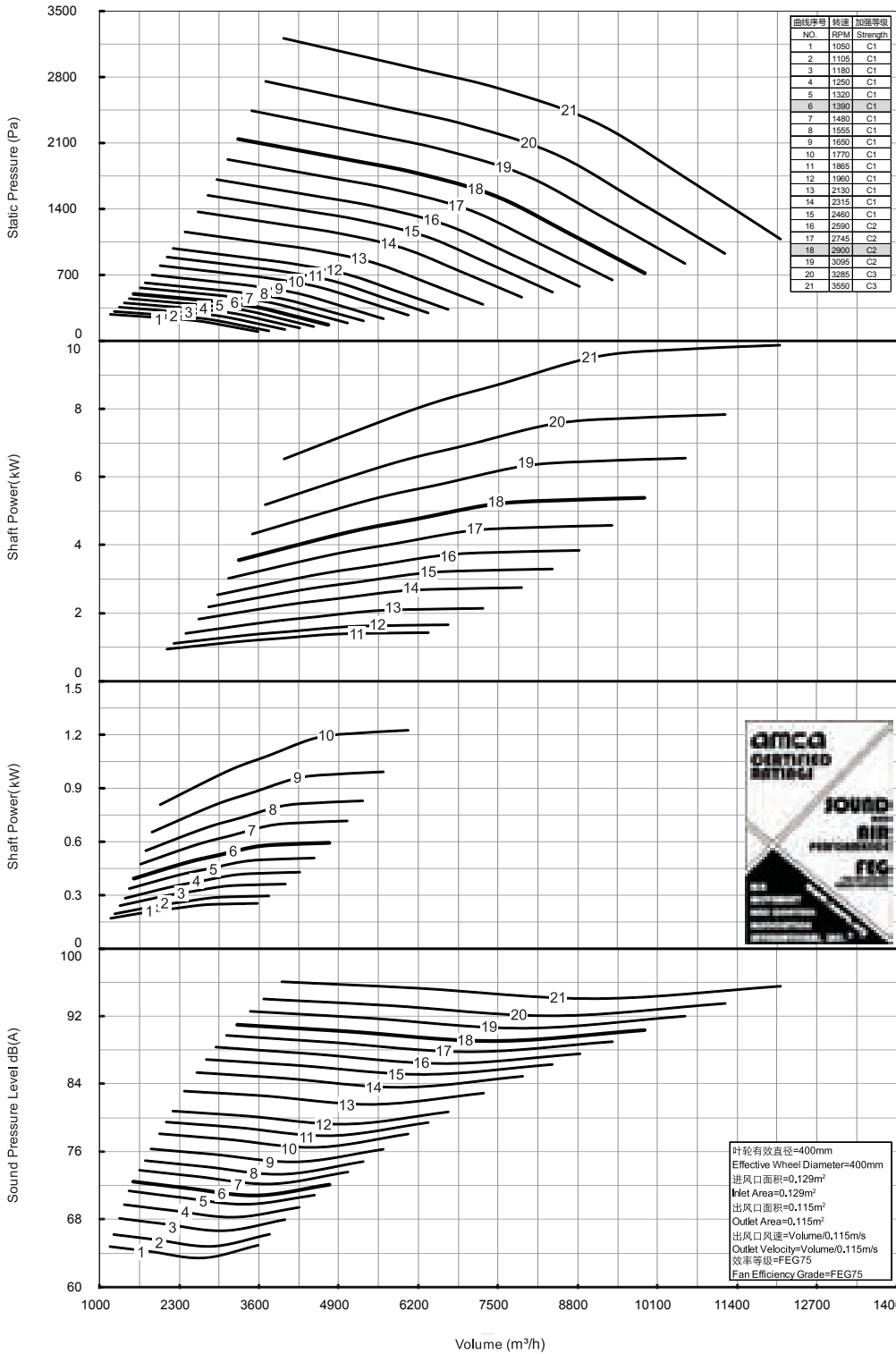
performance parameters under standard condition (20°C). The rotation speed is nominal value.



Performance certified is for installation type B - free inlet, ducted outlet. Power rating (kW) does not include transmission losses. Performance ratings do not include the effects of appurtenances (accessories). Values shown are for inlet LwA sound power levels for Installation Type B: Free inlet, ducted outlet. The sound power level ratings shown are in decibels, referred to 10⁻¹² watts, calculated per AMCA International Standard 301. The A-weighted sound ratings shown have been calculated per AMCA International Standard 301. dB(A) A-weighted sound pressure level is based on 11.5 dB sound attenuation per octave band at 1.5 m. Note that dB(A) levels are not licensed by AMCA International.

YFBCSL-400 Performance data

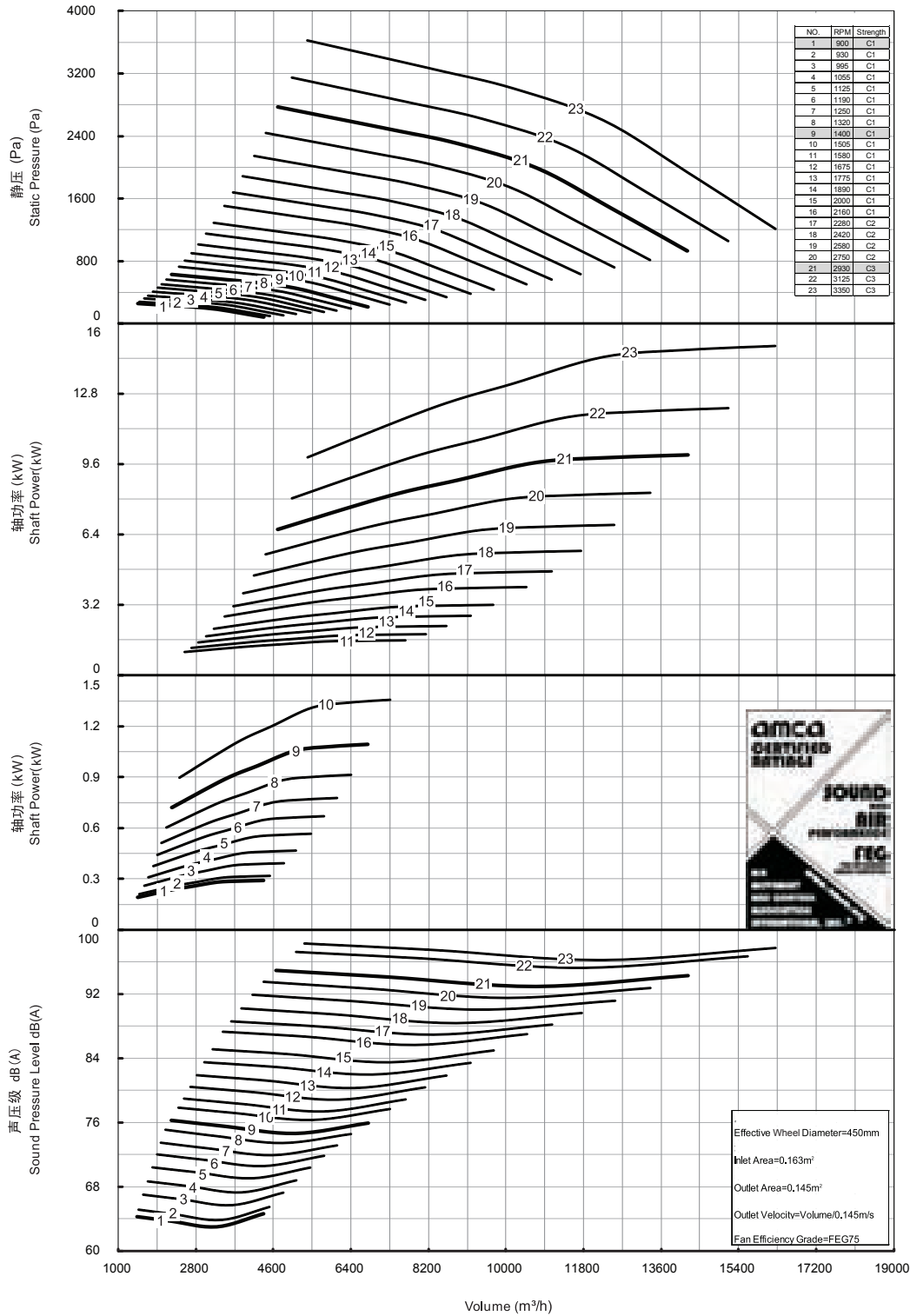
Note: The following are performance parameters under standard condition (20°C). The rotation speed is nominal value.



Performance certified is for installation type B - free inlet, ducted outlet. Power rating (kW) does not include transmission losses. Performance ratings do not include the effects of appurtenances (accessories). Values shown are for inlet LwA sound power levels for Installation Type B: Free inlet, ducted outlet. The sound power level ratings shown are in decibels, referred to 10⁻¹² watts, calculated per AMCA International Standard 301. The A-weighted sound ratings shown have been calculated per AMCA International Standard 301. dB(A) A-weighted sound pressure level is based on 11.5 dB sound attenuation per octave band at 1.5 m. Note that dB(A) levels are not licensed by AMCA International.

YFBCSL-450 Performance data

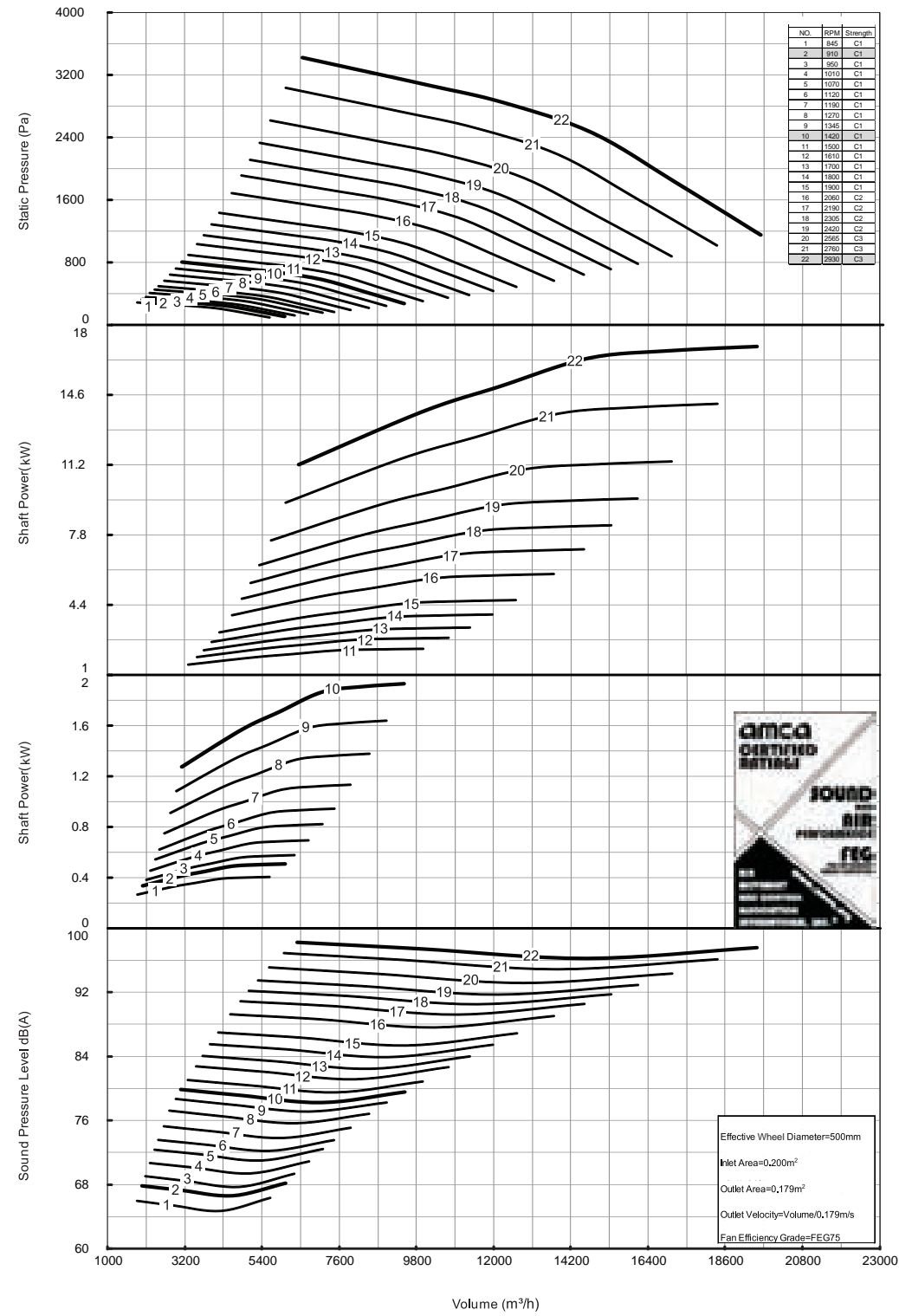
Note: The following are performance parameters under standard condition (20°C). The rotation speed is nominal value.



Performance certified is for installation type B - free inlet, ducted outlet. Power rating (kW) does not include transmission losses. Performance ratings do not include the effects of appurtenances (accessories). Values shown are for inlet LwA sound power levels for Installation Type B: Free inlet, ducted outlet. The sound power level ratings shown are in decibels, referred to 10⁻¹² watts, calculated per AMCA International Standard 301. The A-weighted sound ratings shown have been calculated per AMCA International Standard 301. dB(A) A-weighted sound pressure level is based on 11.5 dB sound attenuation per octave band at 1.5 m. Note that dB(A) levels are not licensed by AMCA International.

YFBCSL-500 Performance data

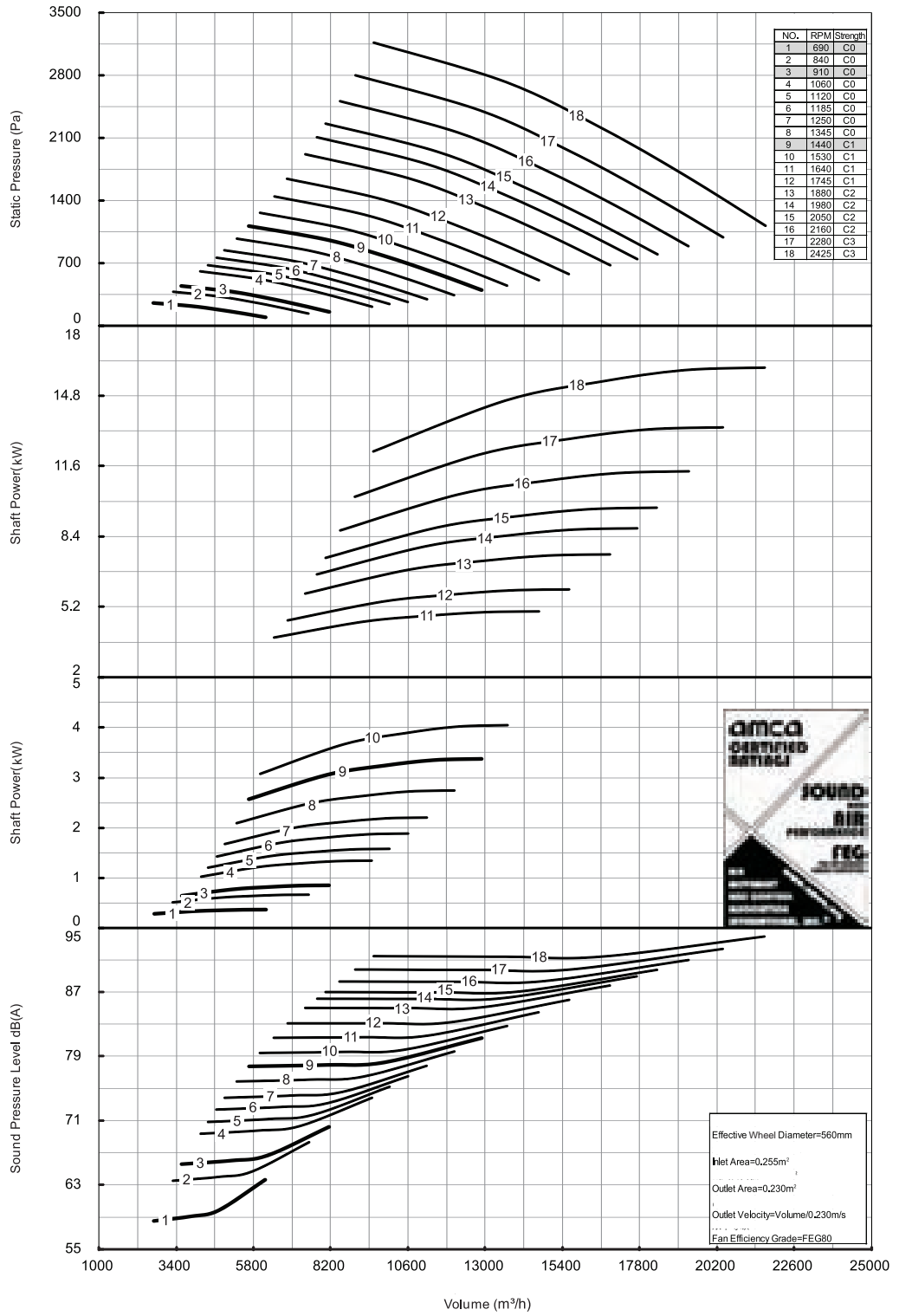
Note: The following are performance parameters under standard condition (20°C). The rotation speed is nominal value.



Performance certified is for installation type B - free inlet, ducted outlet. Power rating (kW) does not include transmission losses. Performance ratings do not include the effects of appurtenances (accessories). Values shown are for inlet LwA sound power levels for Installation Type B: Free inlet, ducted outlet. The sound power level ratings shown are in decibels, referred to 10⁻¹² watts, calculated per AMCA International Standard 301. The A-weighted sound ratings shown have been calculated per AMCA International Standard 301. dB(A) A-weighted sound pressure level is based on 11.5 dB sound attenuation per octave band at 1.5 m. Note that dB(A) levels are not licensed by AMCA International.

YFBCSL-560 Performance data

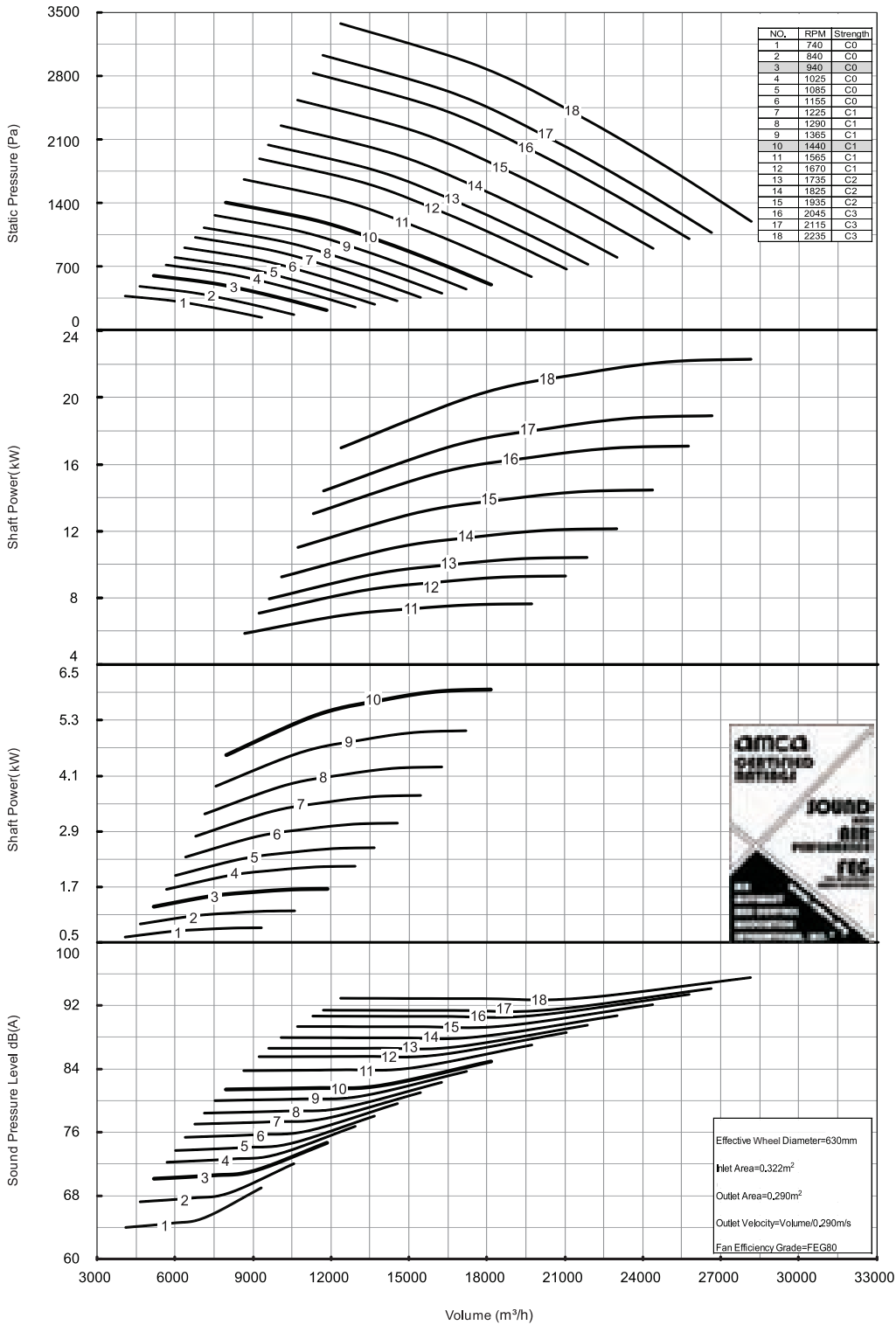
Note: The following are performance parameters under standard condition (20°C). The rotation speed is nominal value.



Performance certified is for installation type B - free inlet, ducted outlet. Power rating (kW) does not include transmission losses. Performance ratings do not include the effects of appurtenances (accessories). Values shown are for inlet LwA sound power levels for Installation Type B: Free inlet, ducted outlet. The sound power level ratings shown are in decibels, referred to 10⁻¹² watts, calculated per AMCA International Standard 301. The A-weighted sound ratings shown have been calculated per AMCA International Standard 301. dB(A) A-weighted sound pressure level is based on 11.5 dB sound attenuation per octave band at 1.5 m. Note that dB(A) levels are not licensed by AMCA International.

YFBCSL-630 Performance data

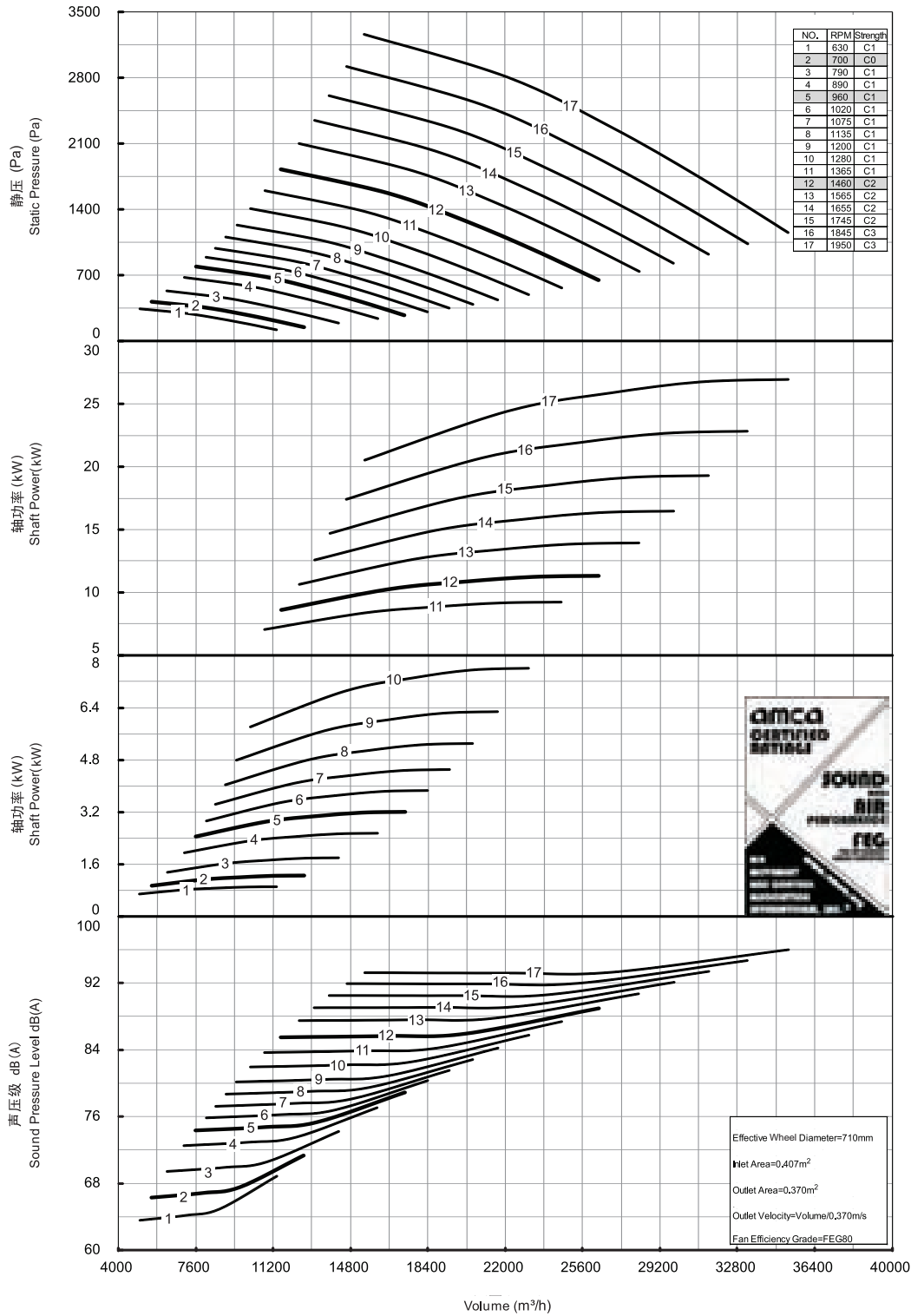
Note: The following are performance parameters under standard condition (20°C). The rotation speed is nominal value.



Performance certified is for installation type B - free inlet, ducted outlet. Power rating (kW) does not include transmission losses. Performance ratings do not include the effects of appurtenances (accessories). Values shown are for inlet LwA sound power levels for Installation Type B: Free inlet, ducted outlet. The sound power level ratings shown are in decibels, referred to 10⁻¹² watts, calculated per AMCA International Standard 301. The A-weighted sound ratings shown have been calculated per AMCA International Standard 301. dB(A) A-weighted sound pressure level is based on 11.5 dB sound attenuation per octave band at 1.5 m. Note that dB(A) levels are not licensed by AMCA International.

YFBCSL-710 Performance data

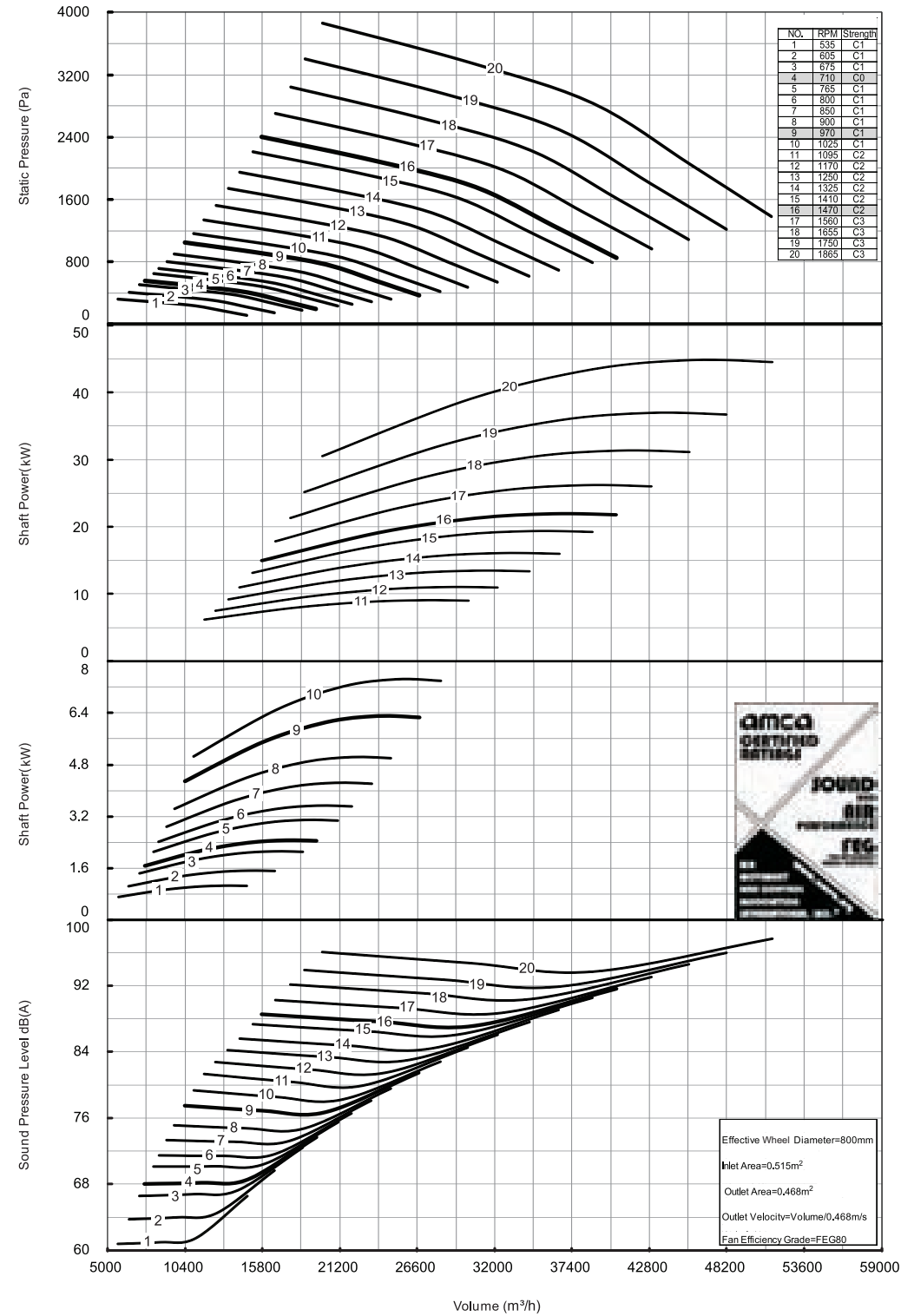
Note: The following are performance parameters under standard condition (20°C). The rotation speed is nominal value.



Performance certified is for installation type B - free inlet, ducted outlet. Power rating (kW) does not include transmission losses. Performance ratings do not include the effects of appurtenances (accessories). Values shown are for inlet LwA sound power levels for Installation Type B: Free inlet, ducted outlet. The sound power level ratings shown are in decibels, referred to 10⁻¹² watts, calculated per AMCA International Standard 301. The A-weighted sound ratings shown have been calculated per AMCA International Standard 301. dB(A) A-weighted sound pressure level is based on 11.5 dB sound attenuation per octave band at 1.5 m. Note that dB(A) levels are not licensed by AMCA International.

YFBCSL-800 Performance data

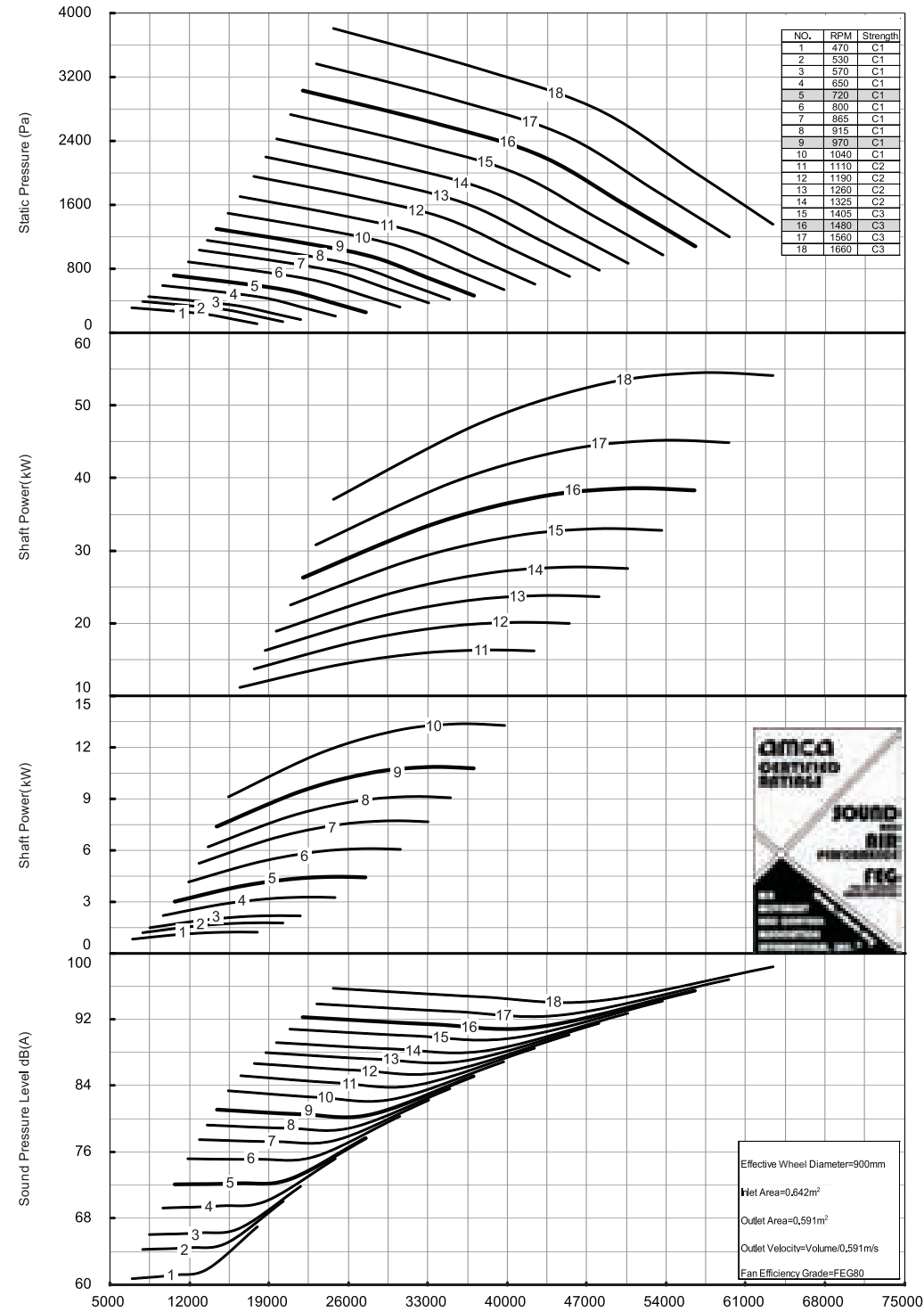
Note: The following are performance parameters under standard condition (20°C). The rotation speed is nominal value.



Performance certified is for installation type B - free inlet, ducted outlet. Power rating (kW) does not include transmission losses. Performance ratings do not include the effects of appurtenances (accessories). Values shown are for inlet LwA sound power levels for Installation Type B: Free inlet, ducted outlet. The sound power level ratings shown are in decibels, referred to 10⁻¹² watts, calculated per AMCA International Standard 301. The A-weighted sound ratings shown have been calculated per AMCA International Standard 301. dB(A) A-weighted sound pressure level is based on 11.5 dB sound attenuation per octave band at 1.5 m. Note that dB(A) levels are not licensed by AMCA International.

YFBCSL-900 Performance data

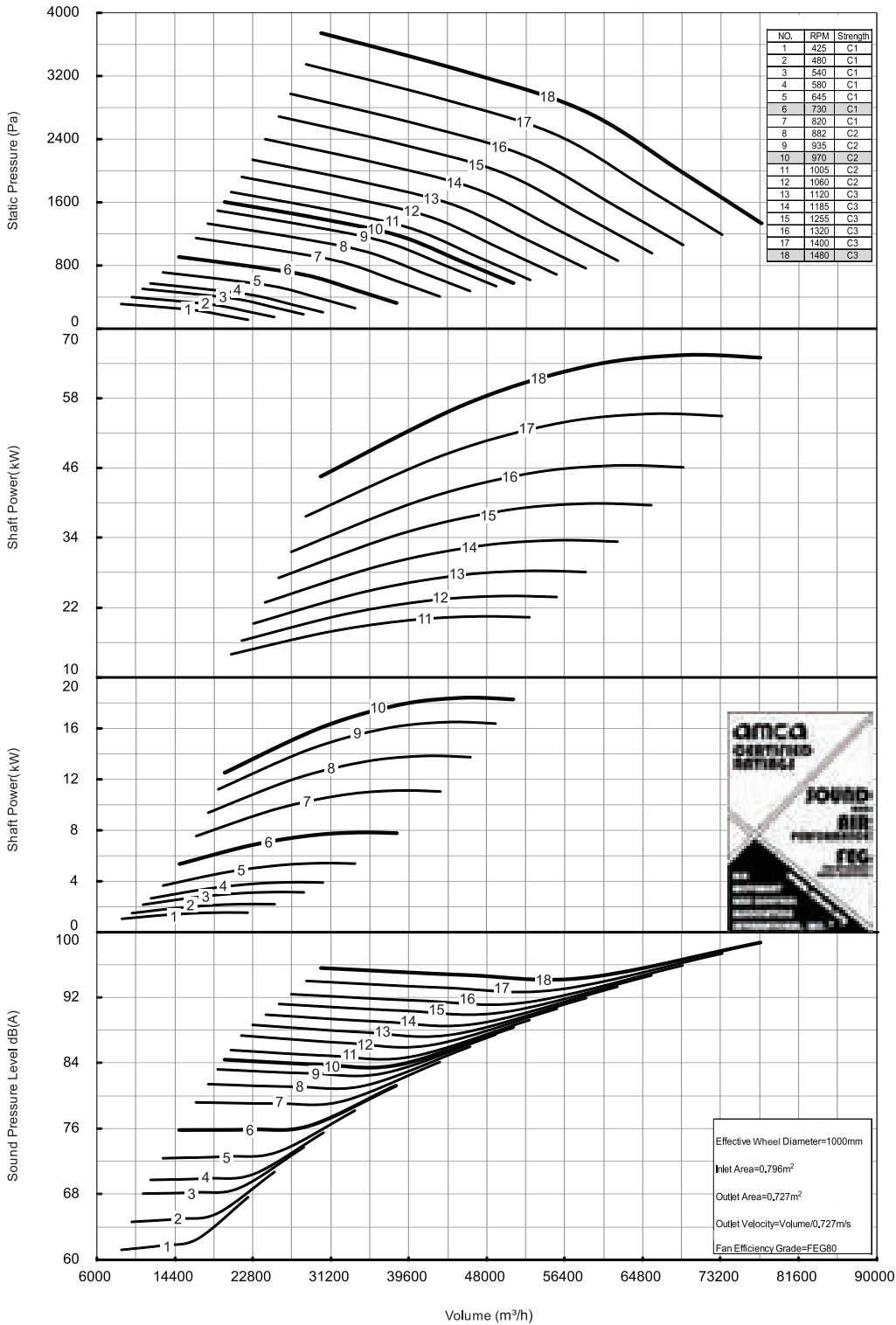
Note: The following are performance parameters under standard condition (20°C). The rotation speed is nominal value.



Performance certified is for installation type B - free inlet, ducted outlet. Power rating (kW) does not include transmission losses. Performance ratings do not include the effects of appurtenances (accessories). Values shown are for inlet LwA sound power levels for Installation Type B: Free inlet, ducted outlet. The sound power level ratings shown are in decibels, referred to 10⁻¹² watts, calculated per AMCA International Standard 301. The A-weighted sound ratings shown have been calculated per AMCA International Standard 301. dB(A) A-weighted sound pressure level is based on 11.5 dB sound attenuation per octave band at 1.5 m. Note that dB(A) levels are not licensed by AMCA International.

YFBCSL-1000 Performance data

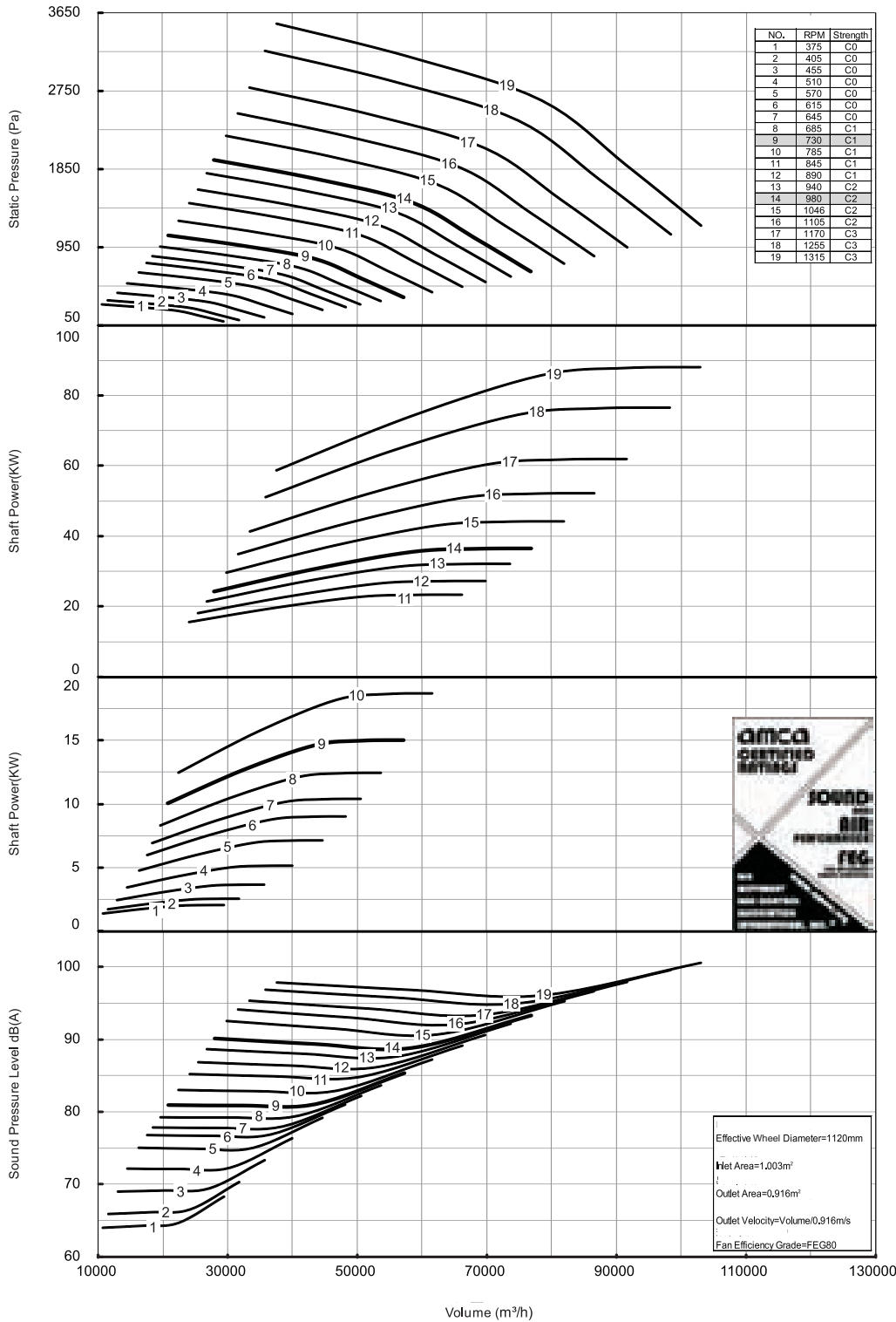
Note: The following are performance parameters under standard condition (20°C). The rotation speed is nominal value.



Performance certified is for installation type B - free inlet, ducted outlet. Power rating (kW) does not include transmission losses. Performance ratings do not include the effects of appurtenances (accessories). Values shown are for inlet LwA sound power levels for Installation Type B: Free inlet, ducted outlet. The sound power level ratings shown are in decibels, referred to 10⁻¹² watts, calculated per AMCA International Standard 301. The A-weighted sound ratings shown have been calculated per AMCA International Standard 301. dB(A) A-weighted sound pressure level is based on 11.5 dB sound attenuation per octave band at 1.5 m. Note that dB(A) levels are not licensed by AMCA International.

YFBCSL-1120 Performance data

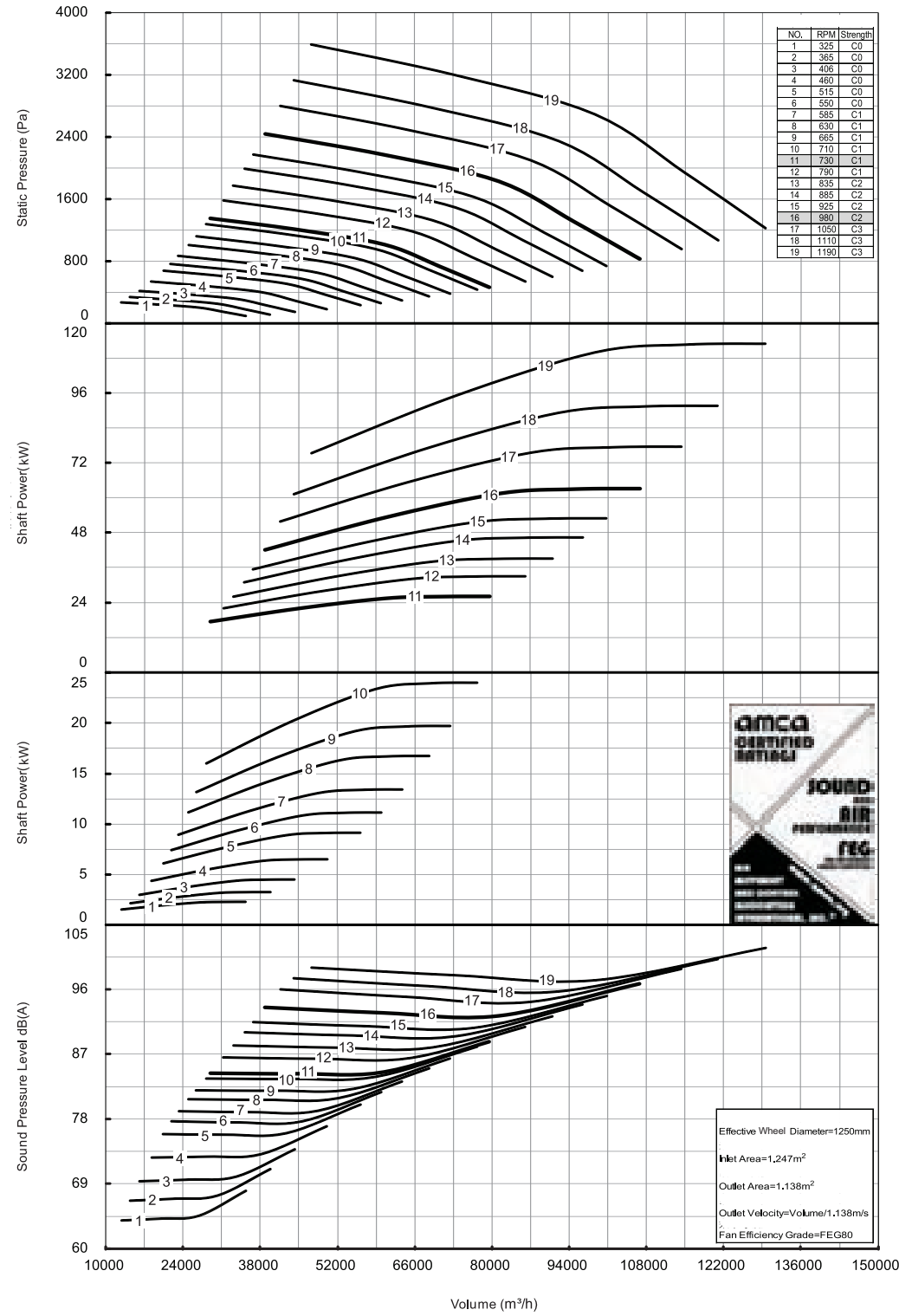
Note: The following are performance parameters under standard condition (20°C). The rotation speed is nominal value.



Performance certified is for installation type B - free inlet, ducted outlet. Power rating (kW) does not include transmission losses. Performance ratings do not include the effects of appurtenances (accessories). Values shown are for inlet LwA sound power levels for Installation Type B: Free inlet, ducted outlet. The sound power level ratings shown are in decibels, referred to 10⁻¹² watts, calculated per AMCA International Standard 301. The A-weighted sound ratings shown have been calculated per AMCA International Standard 301. dB(A) A-weighted sound pressure level is based on 11.5 dB sound attenuation per octave band at 1.5 m. Note that dB(A) levels are not licensed by AMCA International.

YFBCSL-1250 Performance data

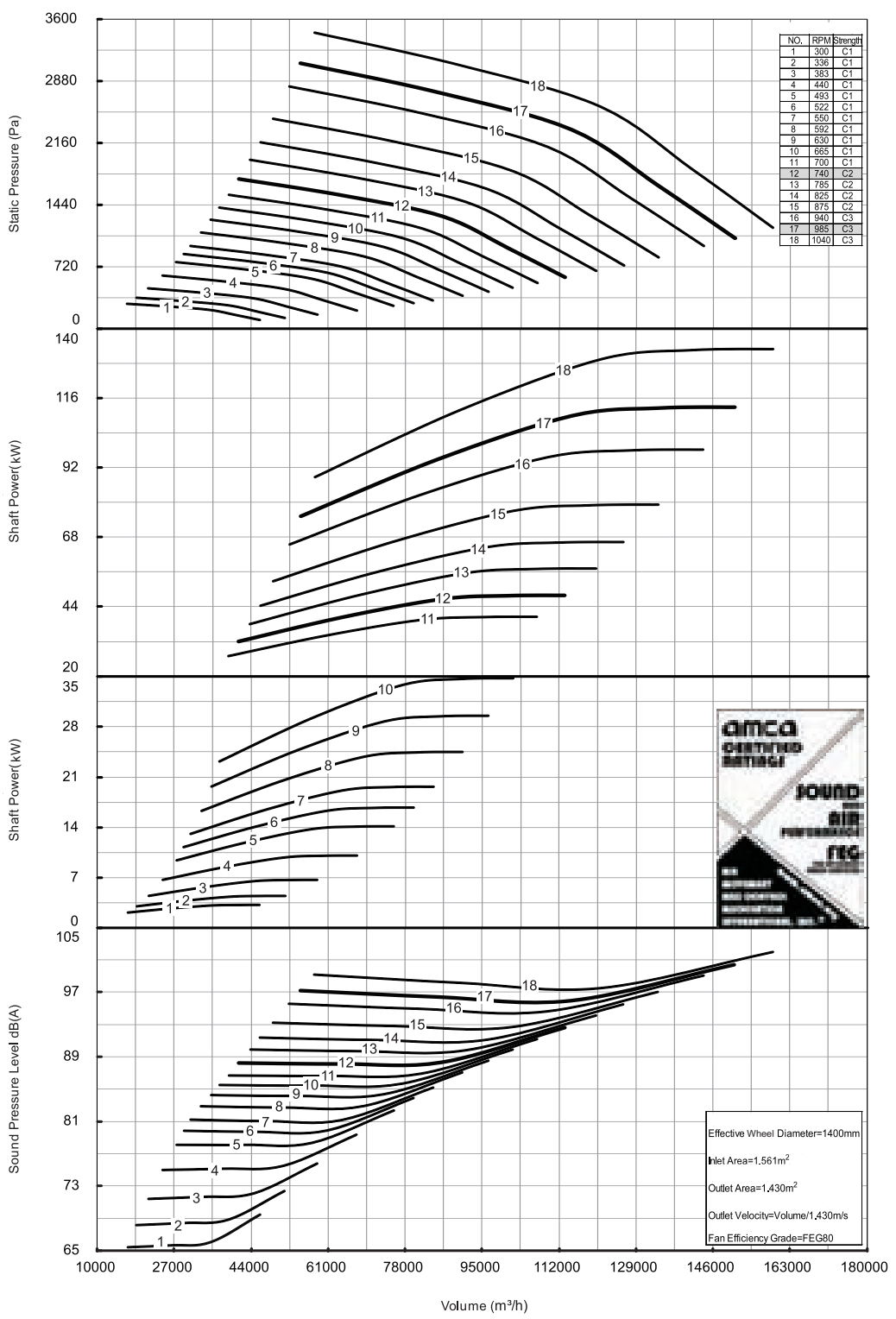
Note: The following are performance parameters under standard condition (20°C). The rotation speed is nominal value.



Performance certified is for installation type B - free inlet, ducted outlet. Power rating (kW) does not include transmission losses. Performance ratings do not include the effects of appurtenances (accessories). Values shown are for inlet LwA sound power levels for Installation Type B: Free inlet, ducted outlet. The sound power level ratings shown are in decibels, referred to 10⁻¹² watts, calculated per AMCA International Standard 301. The A-weighted sound ratings shown have been calculated per AMCA International Standard 301. dB(A) A-weighted sound pressure level is based on 11.5 dB sound attenuation per octave band at 1.5 m. Note that dB(A) levels are not licensed by AMCA International.

YFBCSL-1400 Performance data

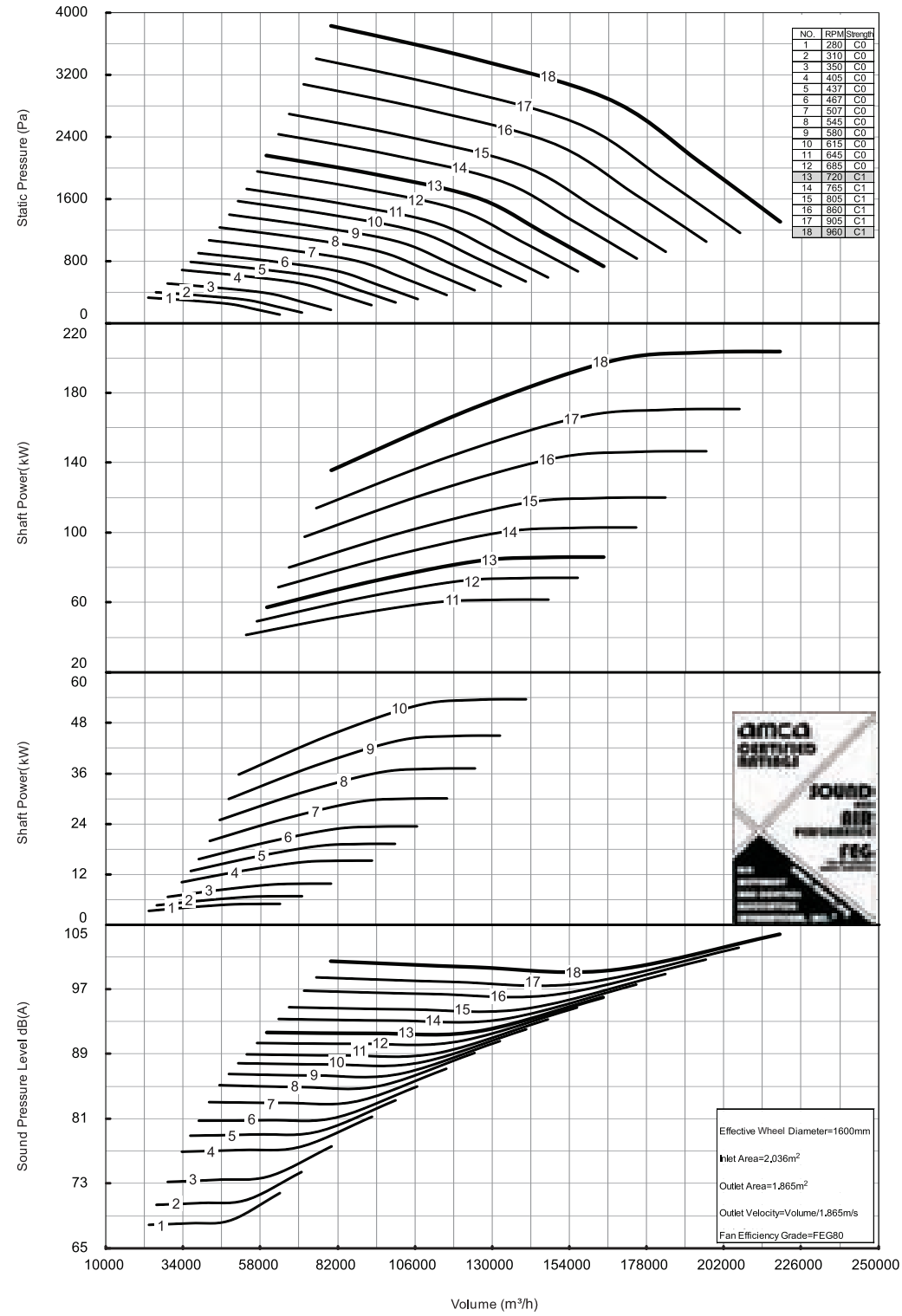
Note: The following are performance parameters under standard condition (20°C). The rotation speed is nominal value.



Performance certified is for installation type B - free inlet, ducted outlet. Power rating (kW) does not include transmission losses. Performance ratings do not include the effects of appurtenances (accessories). Values shown are for inlet LwA sound power levels for Installation Type B: Free inlet, ducted outlet. The sound power level ratings shown are in decibels, referred to 10⁻¹² watts, calculated per AMCA International Standard 301. The A-weighted sound ratings shown have been calculated per AMCA International Standard 301. dB(A) A-weighted sound pressure level is based on 11.5 dB sound attenuation per octave band at 1.5 m. Note that dB(A) levels are not licensed by AMCA International.

YFBCSL-1600 Performance data

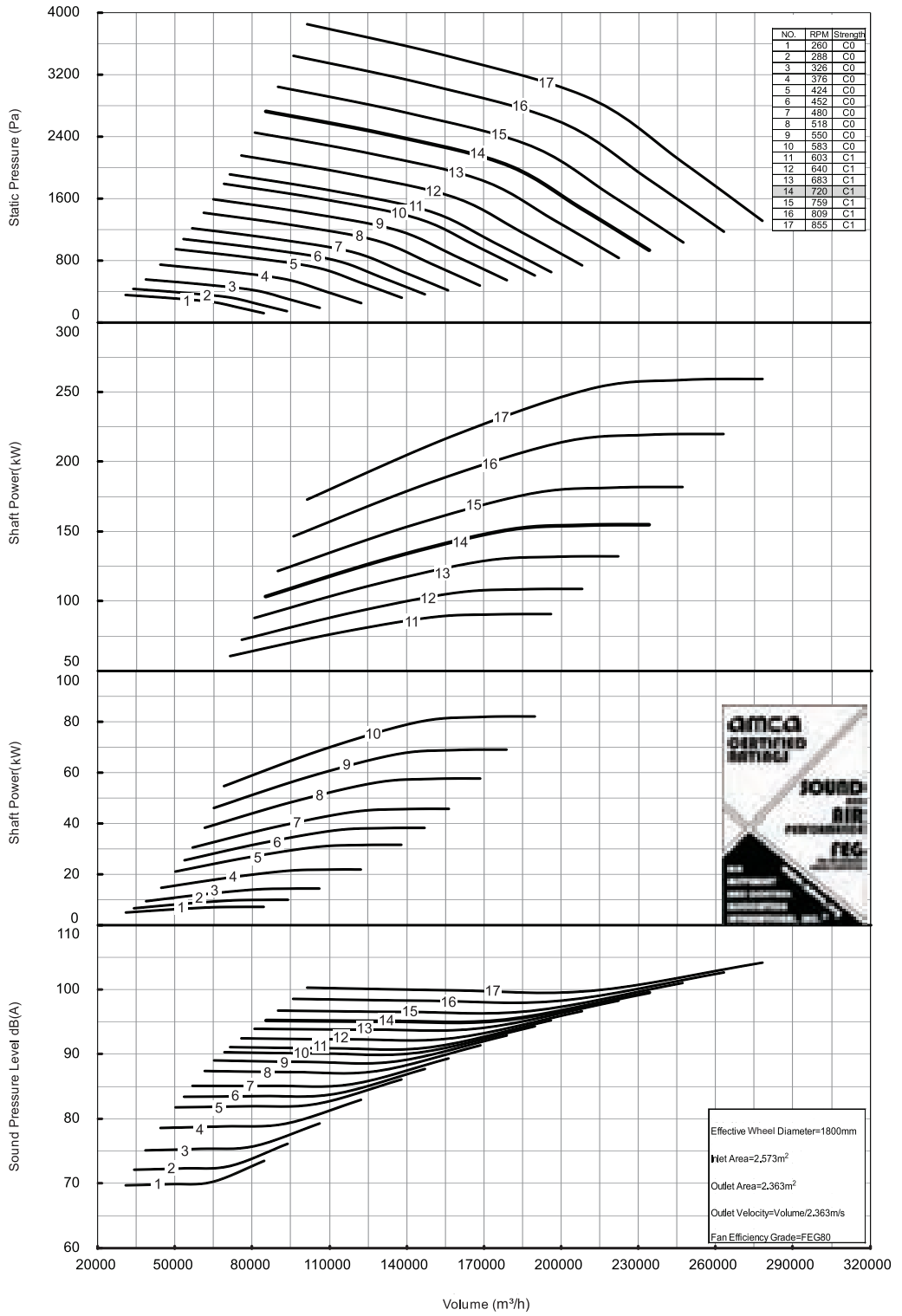
Note: The following are performance parameters under standard condition (20°C). The rotation speed is nominal value.



Performance certified is for installation type B - free inlet, ducted outlet. Power rating (kW) does not include transmission losses. Performance ratings do not include the effects of appurtenances (accessories). Values shown are for inlet LwA sound power levels for Installation Type B: Free inlet, ducted outlet. The sound power level ratings shown are in decibels, referred to 10⁻¹² watts, calculated per AMCA International Standard 301. The A-weighted sound ratings shown have been calculated per AMCA International Standard 301. dB(A) A-weighted sound pressure level is based on 11.5 dB sound attenuation per octave band at 1.5 m. Note that dB(A) levels are not licensed by AMCA International.

YFBCSL-1800 Performance data

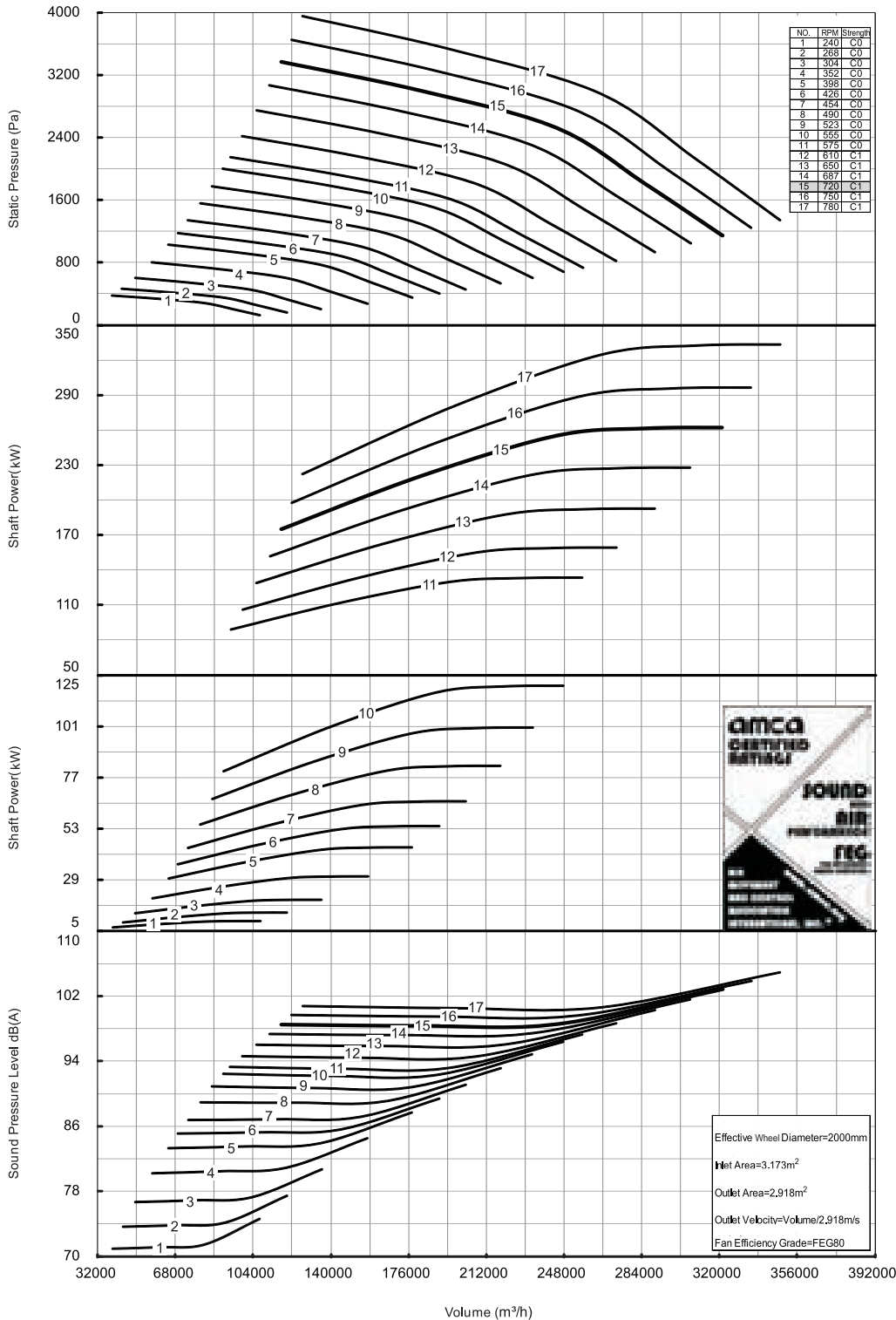
Note: The following are performance parameters under standard condition (20°C). The rotation speed is nominal value.



Performance certified is for installation type B - free inlet, ducted outlet. Power rating (kW) does not include transmission losses. Performance ratings do not include the effects of appurtenances (accessories). Values shown are for inlet LwA sound power levels for Installation Type B: Free inlet, ducted outlet. The sound power level ratings shown are in decibels, referred to 10⁻¹² watts, calculated per AMCA International Standard 301. The A-weighted sound ratings shown have been calculated per AMCA International Standard 301. dB(A) A-weighted sound pressure level is based on 11.5 dB sound attenuation per octave band at 1.5 m. Note that dB(A) levels are not licensed by AMCA International.

YFBCSL-2000 Performance data

Note: The following are performance parameters under standard condition (20°C). The rotation speed is nominal value.



Performance certified is for installation type B - free inlet, ducted outlet. Power rating (kW) does not include transmission losses. Performance ratings do not include the effects of appurtenances (accessories). Values shown are for inlet LwA sound power levels for Installation Type B: Free inlet, ducted outlet. The sound power level ratings shown are in decibels, referred to 10⁻¹² watts, calculated per AMCA International Standard 301. The A-weighted sound ratings shown have been calculated per AMCA International Standard 301. dB(A) A-weighted sound pressure level is based on 11.5 dB sound attenuation per octave band at 1.5 m. Note that dB(A) levels are not licensed by AMCA International.

Sound Data

YFBCSL-280

			SOUND POWER									
			OCTAVE BANOS									
RPM	Pa	Volume	1	2	3	4	5	6	7	8	LWia	dB(A)
1500	97	1624	68	70	71	72	69	67	65	63	75	63
	200	1248	68	71	71	70	67	66	66	66	74	62
	257	981	68	71	71	71	67	66	65	64	74	63
	281	624	69	71	72	72	67	66	65	64	74	63
	121	1819	71	73	74	75	73	70	68	66	78	66
1680	250	1397	71	74	74	74	70	68	68	68	77	65
	322	1099	72	74	75	75	71	68	68	67	77	66
	353	699	72	74	75	76	71	68	67	66	77	66
	150	2024	74	76	77	79	75	73	71	69	81	69
	310	1555	74	77	77	78	73	71	70	70	80	68
1870	399	1223	75	77	78	79	74	71	70	69	80	69
	437	778	75	77	78	79	74	71	70	69	80	69
	168	2143	76	77	78	80	77	74	72	70	82	71
	348	1647	76	78	79	80	75	73	72	72	82	70
	447	1295	77	78	79	81	75	73	71	71	82	70
1980	490	823	77	78	79	81	76	73	71	70	82	71
	188	2262	78	79	80	82	78	76	73	71	84	72
	387	1738	78	79	80	82	76	74	73	73	83	72
	498	1367	78	80	81	83	77	74	73	72	84	72
	546	869	78	80	81	83	77	74	72	71	84	72
2200	208	2381	79	80	81	83	80	77	75	73	85	74
	429	1830	79	80	82	83	78	75	74	74	84	73
	552	1439	80	81	82	84	78	75	74	73	85	73
	605	915	80	81	82	84	79	75	74	73	85	74
	247	2598	82	82	83	85	82	79	77	75	87	76
2400	511	1996	82	83	84	85	80	77	76	76	86	75
	657	1570	82	83	85	85	81	77	76	75	87	75
	721	998	82	83	85	86	81	77	76	75	87	76
	278	2755	83	84	85	86	84	81	78	76	89	77
	575	2117	84	84	86	86	82	79	77	77	88	76
2545	739	1665	84	84	86	86	83	79	77	76	88	77
	810	1058	84	85	86	87	83	79	77	76	88	77
	309	2906	85	85	86	87	85	82	79	77	90	78
	639	2233	86	85	88	87	83	80	78	78	89	77
	822	1757	86	86	88	87	84	80	78	78	89	78
2685	902	1117	86	86	88	88	85	80	78	77	90	78
	343	3058	86	87	88	88	86	83	81	79	91	80
	708	2350	87	86	89	88	84	81	79	79	90	79
	910	1848	87	87	89	88	86	81	79	79	91	79
	998	1175	87	87	89	89	86	81	79	78	91	79
2990	384	3237	88	88	89	89	88	85	82	80	93	81
	793	2487	89	88	91	89	86	83	81	81	92	80
	1019	1956	89	89	91	90	87	83	81	80	92	81
	1118	1243	89	89	91	90	88	83	81	80	93	81
	427	3415	89	90	91	90	90	86	84	81	94	83
3155	883	2624	89	90	92	90	88	84	82	82	93	82
	1135	2064	89	90	92	91	89	84	82	81	94	82
	1245	1312	89	90	92	91	90	85	82	81	94	83
	482	3626	90	92	92	92	88	85	83	83	96	84
	995	2786	91	91	93	92	90	86	84	83	95	84
3350	1280	2192	91	92	94	93	91	86	84	83	96	84
	1404	1393	91	92	94	93	92	86	84	82	96	84
	535	3821	91	93	94	93	93	89	86	84	97	86
	1105	2936	91	93	95	94	92	87	85	84	97	85
	1421	2309	91	94	95	94	93	88	85	84	97	86
3530	1559	1468	91	94	95	94	94	88	85	84	97	86
	612	4086	92	95	95	95	95	91	88	86	99	88
	1264	3140	93	95	96	96	95	89	87	86	99	87
	1625	2470	93	96	97	96	95	90	87	85	99	88
	1783	1570	93	96	97	96	96	90	87	85	99	88
4000	687	4330	93	97	97	97	97	93	90	87	101	89
	1419	3327	94	97	98	97	97	91	88	87	100	89
	1824	2617	94	97	98	98	97	91	88	87	101	89
	2001	1663	94	97	98	98	98	92	88	86	101	90
	772	4590	94	98	99	98	99	94	91	89	103	91
4240	1595	3527	95	99	99	99	99	92	89	88	102	91
	2050	2774	95	99	99	99	99	93	89	88	103	91
	2249	1763	95	99	100	100	100	93	89	88	103	91
	869	4871	95	100	100	100	100	96	93	90	104	92
	1796	3743	96	101	101	101	100	94	91	90	104	92
4500	2309	2944	96	101	101	101	101	95	91	89	104	93
	2533	1871	96	101	101	101	101	95	91	89	104	93
	979	5170	96	102	102	101	101	98	94	92	105	94
	2023	3972	97	102	102	103	101	95	92	91	105	93
	2601	3124	97	103	102	103	102	96	92	91	106	94
4776	2853	1986	97	103	103	103	102	97	92	91	106	94
	1141	5580	97	104	104	103	102	100	96	94	107	96
	2357	4288	98	105	104	105	102	97	94	93	107	95
	3030	3372	98	105	104	105	103	99	94	92	107	96
	3324	2144	98	105	105	105	103	99	94	92	108	96

YFBCSL-315

			SOUND POWER									
			OCTAVE BANOS									
RPM	Pa	Volume	1	2	3	4	5	6	7	8	LWIA	dB(A)
1325	95	2042	69	70	72	72	70	67	65	63	75	64
	197	1569	69	72	72	70	68	66	66	66	74	63
	253	1234	69	72	73	71	68	66	65	65	74	63
	278	785	70	72	73	72	68	66	65	64	74	63
	106	2158	70	72	73	73	71	69	67	65	76	65
1400	220	1658	70	74	73	71	69	67	67	67	76	64
	283	1304	71	74	74	73	69	67	67	66	76	64
	310	829	71	74	74	73	69	67	66	65	76	64
	121	2304	72	74	75	75	73	70	68	66	78	67
	251	1770	72	75	75	73	71	69	69	67	77	66
1495	323	1393	72	75	75	75	71	69	68	67	77	66
	354	885	73	75	76	75	71	69	68	67	78	66
	137	2451	74	75	76	77	74	72	70	68	80	68
	284	1883	74	77	76	76	72	70	70	70	79	67
	365	1481	74	77	77	77	72	70	70	69	79	68
1590	400	941	74	77	77	77	73	70	69	68	79	68
	153	2589	75	77	78	79	76	73	71	69	81	70
	317	1990	75	78	78	78	74	72	71	71	80	69
	407	1565	76	78	79	79	74	72	71	70	81	69
	447	995	76	78	79	79	74	72	71	69	81	69
1680	171	2736	77	78	79	81	77	75	72	70	83	71
	354	2102	77	79	80	80	75	73	73	72	82	70
	455	1653	77	80	80	81	76	73	72	71	82	71
	499	1051	78	80	80	81	76	73	72	71	82	71
	190	2882	79	80	81	82	79	76	74	72	84	73
1870	393	2215	79	81	81	81	77	74	74	74	83	72
	505	1742	79	81	82	83	77	74	73	72	84	72
	554	1542	79	81	82	83	77	74	73	72	84	72
	209	3021	80	81	82	84	80	77	75	73	86	74
	431	2321	80	82	82	83	78	76	75	75	85	73
1960	554	1826	80	82	83	84	78	76	74	74	85	74
	608	1161	81	82	83	84	79	76	74	73	85	74
	232	3183	81	82	83	85	81	79	76	74	87	76
	479	2445	82	83	84	85	79	77	76	76	86	75
	615	1924	82	83	84	86	80	77	76	75	87	75
2065	675	1223	82	84	84	86	80	77	75	74	87	75
	261	3375	83	84	85	87	83	80	78	76	89	77
	538	2593	83	84	86	87	81	78	77	77	88	76
	692	2040	84	85	86	87	82	78	77	76	88	77
	759	1297	84	85	86	88	82	78	77	76	88	77
2190	277	3483	84	85	86	87	84	81	78	76	89	78
	573	2676	84	85	87	87	82	79	78	78	89	77
	737	2105	85	86	87	88	83	79	78	77	89	77
	809	1338	85	86	87	88	83	79	77	76	89	78
	317	3722	86	87	87	89	86	83	80	78	91	79
2412	555	2950	86	87	89	89	84	81	79	79	90	79
	847	2250	87	89	89	85	81	79	78	78	91	79
	923	1430	87	87	89	89	85	81	79	78	91	79
	356	3946	88	88	89	90	87	84	81	79	92	81
	736	3032	88	88	90	89	85	82	81	80	91	80
2560	946	2385	88	89	90	90	86	82	80	80	92	80
	1038	1516	88	89	90	90	87	82	80	79	92	81
	396	4161	89	90	90	90	89	86	83	81	94	82
	818	3197	90	89	92	90	88	84	82	82	93	81
	1052	2515	90	90	92	91	88	84	82	81	93	82
2700	1154	1599	90	90	92	91	88	84	82	81	93	82
	438	4377	91	91	92	91	90	87	84	82	95	83
	905	3363	91	91	93	91	88	85	83	83	94	82
	1164	2645	91	91	93	92	89	85	83	82	94	83
	1277	1682	91	92	93	92	90	85	83	82	95	83
3050	505	4701	92	93	93	93	92	89	86	84	97	85
	1044	3612	93	93	95	93	90	87	85	84	96	84
	1343	2841	93	93	95	94	92	87	85	84	96	85
	1473	1806	93	94	95	94	92	87	85	83	97	85
	955	4971	93	94	95	94	92	87	85	83	97	85
3225	1188	3819	94	94	96	95	92	88	86	86	97	86
	1501	3004	94	95	96	95	94	88	85	85	98	86
	1647	1910	94	95	97	96	94	88	86	85	98	87
	632	5256	94	95	96	96	96	92	89	87	100	88
	1305	4038	95	96	98	96	94	90	87	87	99	88
3410	1678	3176	95	97	98	97	95	90	87	86	100	88
	1841	2019	95	97	98	97	96	90	87	86	100	88
	710	5572	95	98	98	98	97	93	90	88	101	90
	1467	4281	96	98	99	98	96	91	89	88	101	89
	1886	3367	96	98	99	98	97	92	89	88	101	90
3615	2069	2140	96	99	99	99	98	95	89	87	102	90
	797	5903	96	100	100	99	98	92	89	87	103	92
	1647	4536	97	100	100	100	98	93	90	89	103	91
	2117	3568	97	100	101	100	99	93	90	89	103	92
	2322	2268	97	100	101	100	100	94	90	89	103	92
4030	882	6211	97	101	101	100	101	96	93	91	104	93
	1823	4772	98	101	102	101	100	94	91	90	104	93
	2344	3754	98	102	102	102	101	95	91	90	105	93
	2571	2386	98	102	102	102	101	95	91	90	105	93
	981	8592	98	103	102	102	102	96	92	92	106	94
4250	2028	5033	99	103	103	103	102	96	93	92	106	94
	2607	3959	99	103	103	103	103	96	93	91	106	95
	2860	2516	99	103	104	103	103	97	93	91	106	95
	1105	6951	99	104	104	103	103	99	96	93	107	96
	2283	5341	100	105	104	104	103	97	94	93	107	96
4510	2835	4201	100	105	105	105	104	98	94	93	108	96
	3220	2670	100	105	105	105	104	99	94	92	108	96

Sound Data

YFBCSL- 355

			SOUND POWER									
			OCTAVE BANOS									
RPM	Pa	Volume	1	2	3	4	5	6	7	8	LWIA	dB(A)
1170	94	2581	70	72	75	73	70	68	66	64	76	65
	195	1983	71	73	75	71	69	67	67	67	76	64
	251	1560	71	73	75	72	69	67	67	66	75	64
	275	992	71	73	76	72	69	67	66	65	75	64
	105	2725	72	73	76	74	72	69	68	65	77	66
1235	217	2093	72	75	75	72	70	69	69	69	77	65
	280	1647	72	75	76	73	70	68	68	67	77	65
	307	1047	73	75	76	74	70	68	67	66	77	65
	120	2912	74	75	77	76	74	71	69	67	79	68
	248	2238	73	77	77	74	72	70	70	70	78	67
1320	319	1760	74	77	77	75	72	70	69	69	78	67
	350	1119	74	77	78	76	72	70	69	68	78	67
	133	3067	75	77	78	78	75	72	70	68	80	69
	275	2356	75	78	78	75	73	71	71	71	80	68
	354	1853	75	78	78	77	73	71	70	70	80	68
1390	388	1178	76	78	79	77	73	71	70	69	80	68
	153	3287	77	78	79	80	77	74	72	70	82	71
	317	2526	77	80	79	77	75	73	73	73	81	70
	407	1987	77	80	80	79	75	73	72	71	81	70
	446	1263	77	80	80	79	75	73	72	71	82	70
1555	167	3431	78	80	80	81	78	75	73	71	83	72
	345	2636	78	81	80	79	76	74	74	74	82	71
	443	2073	78	81	81	80	76	74	73	72	83	71
	486	1318	79	81	81	81	76	74	73	72	83	71
	188	3640	80	81	82	83	79	77	75	73	85	74
1650	388	2797	80	82	82	81	77	75	75	75	84	73
	499	2200	80	83	83	82	78	75	74	74	84	73
	547	1398	80	83	83	83	78	75	74	73	84	73
	210	3850	82	83	83	84	81	78	76	74	87	75
	434	2958	81	84	84	83	79	77	76	76	86	74
1745	558	2327	82	84	84	84	79	77	76	75	86	74
	612	1479	82	84	84	85	79	77	75	74	86	75
	235	4070	83	84	85	86	82	80	77	75	88	77
	485	3127	83	85	85	85	80	78	77	77	87	76
	624	2460	84	85	86	86	81	78	77	76	88	76
1845	684	1564	84	85	86	87	81	78	77	76	88	76
	261	4291	85	86	86	88	84	81	79	77	90	78
	539	3297	85	86	87	87	82	79	79	79	89	77
	693	2593	85	87	87	88	82	79	78	77	89	78
	761	1648	85	87	87	88	83	79	78	77	89	78
1945	291	4534	86	87	88	89	85	82	80	78	91	80
	602	3483	86	88	88	89	83	81	80	80	90	79
	774	2740	87	88	89	90	84	81	79	79	91	79
	849	1742	87	88	89	91	85	81	79	78	91	80
	320	4754	88	88	89	91	87	84	81	79	92	81
2055	662	3653	88	89	90	91	84	82	81	81	92	80
	851	2873	88	89	90	91	85	82	80	80	92	81
	934	1826	88	89	90	92	86	82	80	79	92	81
	360	5041	89	90	90	92	88	85	83	81	94	82
	744	3873	90	90	92	92	86	83	82	82	93	81
2155	957	3047	90	91	92	92	87	83	82	81	93	82
	1050	1937	90	91	92	93	87	83	82	81	94	82
	401	5317	91	91	92	93	90	87	84	82	95	83
	828	4085	91	91	93	93	87	85	83	83	94	83
	1065	3213	92	92	93	93	89	85	83	82	95	83
2285	1168	2043	92	92	93	94	89	85	83	82	95	83
	458	5681	93	93	94	94	91	88	86	84	97	85
	945	4365	93	93	95	94	89	86	85	85	96	84
	1215	3433	94	94	95	94	90	86	85	84	96	85
	1333	2182	94	94	95	95	91	86	84	83	96	85
2375	516	6034	95	95	95	95	93	90	87	85	98	86
	1057	4636	95	95	97	95	91	88	86	86	97	86
	1371	3647	95	95	97	96	92	88	86	85	98	86
	1504	2318	95	95	97	96	93	88	86	85	98	86
	576	6376	96	96	97	96	95	91	88	86	99	88
2460	1191	4899	97	96	98	96	92	89	87	87	98	87
	1531	3853	97	97	98	97	94	89	87	86	99	87
	1679	2449	97	97	98	97	94	89	87	86	99	88
	652	6784	97	98	98	98	96	93	90	88	101	90
	1348	5212	98	98	100	98	95	91	89	89	100	89
2575	1733	4100	98	98	100	98	96	91	89	88	101	89
	1901	2606	98	99	100	98	96	91	89	88	101	89
	729	7170	98	100	100	99	98	95	92	89	103	91
	1506	5509	99	101	101	99	97	92	90	90	102	90
	1936	4333	99	100	101	100	98	93	90	89	102	91
2735	2124	2755	99	100	101	100	98	93	90	89	103	91
	836	7677	99	102	102	101	100	96	93	91	105	93
	1727	5899	100	102	103	101	99	94	92	91	104	92
	2220	4640	100	102	103	102	100	95	92	91	104	93
	2435	2949	100	102	103	102	101	95	92	90	105	93
2890	970	8273	101	104	104	103	103	98	95	93	107	95
	2005	6357	102	104	105	103	102	96	94	93	106	95
	2578	5000	102	104	105	104	103	97	94	92	107	95
	2828	3178	102	104	105	104	103	97	94	92	107	95
	1093	8780	102	106	105	104	104	100	97	94	108	97
3075	2259	6746	103	106	106	105	104	98	95	94	108	96
	2904	5307	103	106	106	105	105	98	95	94	108	97
	3185	3373	103	106	106	106	105	99	95	94	109	97

YFBCSL -400

			SOUND POWER									
			OCTAVE BANOS									
RPM	Pa	Volume	1	2	3	4	5	6	7	8	LWia	dB(A)
1050	94	3580	70	72	74	72	72	69	66	61	76	65
	202	2692	69	70	73	70	72	66	64	60	75	63
	252	1833	70	72	74	71	73	67	63	60	76	64
	281	1174	72	74	74	72	73	67	63	61	76	65
1105	104	3767	71	73	75	73	74	70	68	63	78	66
	224	2833	70	71	74	71	73	68	65	61	76	65
	280	1929	72	74	75	72	74	68	64	61	77	66
	311	1236	73	75	75	73	75	68	65	63	78	66
1180	119	4023	73	75	76	74	76	71	70	65	79	68
	255	3025	72	73	75	71	75	69	67	63	78	67
	319	2060	73	76	76	72	76	70	66	63	79	67
	355	1319	74	77	76	73	77	70	66	64	80	68
1250	134	4261	75	76	77	75	77	73	71	66	81	69
	286	3205	73	75	76	72	77	71	69	65	80	68
	358	2182	75	77	77	73	78	72	68	65	81	69
	398	1398	76	79	77	74	79	72	68	66	81	70
1320	149	4500	76	78	78	76	79	74	73	68	82	71
	319	3384	75	76	77	73	79	72	70	66	81	70
	399	2304	76	79	78	74	80	73	69	66	82	71
	444	1476	77	81	78	75	81	73	69	67	83	71
1390	165	4739	77	79	79	78	80	76	74	69	84	72
	354	3563	76	77	78	75	80	74	71	67	82	71
	442	2426	77	80	80	76	81	75	70	67	83	72
	492	1554	78	82	80	77	82	75	70	68	84	72
1480	187	5045	78	81	81	80	81	77	76	71	85	74
	401	3794	77	79	80	77	81	76	73	69	84	72
	502	2583	78	82	81	78	82	77	72	69	85	73
	558	1655	79	84	82	79	83	77	72	70	85	74
1555	207	5301	79	82	83	81	82	77	72	73	86	75
	443	3986	78	81	81	79	81	77	74	71	85	73
	554	2714	79	83	83	80	82	78	74	70	86	74
	616	1739	80	85	83	81	83	78	74	71	86	75
1620	233	5625	80	84	84	83	83	80	78	74	88	76
	498	4230	79	82	83	81	82	79	75	72	86	75
	623	2880	80	85	85	82	83	80	75	72	87	76
	694	1845	81	86	85	83	84	80	75	72	88	76
1770	268	6034	81	86	86	86	84	83	80	76	90	78
	574	4538	80	84	85	84	83	81	77	74	88	77
	717	3089	81	86	87	85	84	82	77	74	89	77
	798	1979	82	88	87	85	85	83	77	74	90	78
1865	297	6358	82	87	88	88	85	84	81	78	91	79
	637	4781	81	86	86	86	84	83	79	75	89	78
	796	3255	82	88	88	87	85	84	78	75	90	79
	886	2085	83	89	89	87	86	85	78	76	91	80
1960	329	6682	83	89	89	89	86	85	82	79	92	81
	703	5025	82	87	87	88	84	85	80	77	91	79
	880	3421	83	89	90	89	85	86	80	76	92	80
	979	2192	84	90	91	89	86	86	80	77	92	81
2130	388	7261	84	91	91	92	88	88	84	82	95	83
	831	5461	83	89	90	91	86	87	82	79	93	82
	1039	3718	84	91	92	92	87	88	82	78	94	83
	1156	2382	85	92	93	92	88	89	82	79	95	83
2315	458	7892	86	93	94	94	89	90	86	84	96	85
	981	5935	85	92	92	93	87	90	84	81	95	84
	1227	4041	86	93	94	94	88	91	84	81	96	85
	1366	2589	87	94	96	94	89	92	84	81	97	85
2460	517	8386	87	95	95	95	90	92	87	86	98	86
	1108	6307	86	93	93	94	88	92	85	83	97	85
	1386	4294	87	95	96	95	89	93	86	82	98	86
	1542	2751	88	96	98	95	90	94	86	82	98	87
2590	574	8830	88	96	97	96	91	94	87	87	99	88
	1228	6640	87	95	95	95	88	94	87	85	98	86
	1536	4521	88	96	98	96	89	95	88	84	99	88
	1709	2896	89	97	100	96	90	96	88	84	100	88
2745	644	9358	89	97	98	97	93	95	90	89	101	89
	1380	7037	88	96	96	96	90	95	88	86	99	88
	1725	4791	89	97	99	97	91	96	89	85	100	89
	1920	3069	90	98	101	97	92	97	89	85	101	90
2900	719	9886	90	98	100	98	95	96	92	90	102	90
	1540	7435	89	97	98	97	92	95	90	87	101	89
	1926	5062	90	98	101	99	93	96	91	87	102	90
	2143	3243	91	99	102	99	94	97	91	87	103	91
3095	819	10551	91	99	101	100	97	97	94	92	104	92
	1754	7934	90	98	100	99	95	96	92	89	102	91
	2194	5402	91	99	102	100	96	97	93	88	103	92
	2441	3461	92	100	104	101	96	98	93	88	104	93
3285	923	11199	92	100	103	102	99	98	95	93	105	94
	1976	8422	91	99	101	101	97	97	94	90	104	92
	2471	5734	92	100	104	102	98	98	95	90	105	93
	2750	3673	93	101	105	103	98	99	95	90	106	94
3550	1078	12102	93	101	105	104	102	100	98	95	107	96
	2307	9101	92	100	104	103	100	98	97	92	106	94
	2886	6196	93	101	106	104	101	99	98	92	107	96
	3211	3970	94	102	107	105	101	100	98	92	108	96

Sound Data

噪声参数 Sound Data

YFBCSL-560

			SOUND POWER									
			OCTAVE BANOS									
RPM	Pa	Volume	1	2	3	4	5	6	7	8	LWia	dB(A)
690	90	6171	69	70	71	70	69	68	67	66	75	64
	179	4726	68	69	69	67	65	64	62	60	71	60
	220	3879	68	70	70	66	64	63	62	60	71	59
	256	2712	69	70	70	66	63	62	61	60	70	58
840	134	7513	74	76	76	75	74	72	71	70	80	68
	265	5753	72	75	75	72	69	69	67	65	76	65
	327	4722	73	75	76	71	68	68	66	65	76	64
	379	3301	74	75	76	71	68	67	66	65	75	64
910	157	8139	76	79	78	77	76	74	73	72	82	70
	311	6233	74	78	77	74	71	71	69	67	78	67
	383	5116	75	78	78	74	70	70	68	67	78	66
	445	3576	76	78	79	73	69	69	68	66	77	66
1060	213	9480	80	82	81	81	80	78	77	76	85	74
	422	7260	78	81	80	78	75	75	73	71	82	70
	520	5959	79	81	81	78	74	73	72	70	81	70
	604	4166	79	81	81	78	74	72	71	70	81	69
1120	238	10017	81	84	82	82	81	79	78	77	87	75
	471	7671	80	82	81	80	77	76	74	72	83	72
	581	6297	80	83	82	80	76	74	73	72	83	71
	675	4402	80	83	83	80	75	73	72	71	82	71
1185	267	10598	83	85	84	84	82	81	79	78	88	77
	527	8116	82	84	83	81	78	77	76	74	85	73
	650	6662	82	84	83	82	77	76	75	73	84	73
	755	4657	82	84	84	82	77	75	74	73	84	72
1250	297	11179	84	86	85	85	84	82	81	80	89	78
	586	8561	83	85	84	83	79	78	77	75	86	75
	723	7028	83	85	85	83	79	77	76	74	86	74
	840	4912	83	86	86	83	78	76	75	74	85	74
1345	344	12029	86	88	87	87	85	84	82	81	91	80
	679	9212	85	86	86	85	81	80	79	77	88	76
	837	7562	85	87	87	85	81	79	78	76	88	76
	973	5286	85	87	87	86	80	78	77	76	87	76
1440	394	12879	88	90	89	88	87	86	84	83	93	81
	778	9863	87	88	89	87	83	81	81	79	90	78
	960	8096	87	89	89	87	83	80	79	78	89	78
	1115	5659	86	89	89	88	82	79	78	77	89	78
1530	445	13684	90	91	91	90	88	87	85	84	94	83
	878	10479	89	89	90	89	85	83	82	80	91	80
	1084	8602	88	90	91	89	84	81	81	79	91	80
	1259	6013	88	91	91	90	84	81	80	79	91	79
1640	511	14667	92	93	93	92	90	89	87	86	96	84
	1009	11233	91	91	92	91	87	84	84	82	93	82
	1245	9220	90	92	93	91	86	83	82	81	93	81
	1446	6445	89	93	93	92	86	82	81	80	93	81
1745	578	15606	93	94	95	93	91	90	88	87	97	86
	1143	11952	93	92	94	92	88	85	85	83	95	83
	1409	9810	92	93	94	93	88	84	84	82	95	83
	1638	6858	91	94	94	94	87	84	83	82	95	83
1888	677	16885	95	96	97	95	93	92	90	89	99	88
	1337	12931	95	95	96	94	90	87	87	85	97	85
	1650	10614	93	95	96	95	90	86	86	84	97	85
	1917	7420	92	96	96	96	90	86	85	83	97	85
1980	745	17708	96	98	98	96	94	93	91	90	100	89
	1471	13561	96	96	97	95	92	89	88	86	98	86
	1815	11132	94	97	97	96	91	88	87	85	98	86
	2108	7781	93	97	98	97	91	87	86	85	98	86
2050	798	18334	96	99	99	96	95	94	92	91	101	90
	1577	14041	96	97	98	95	93	89	89	87	99	87
	1945	11525	95	98	98	96	93	89	88	86	98	87
	2260	8056	94	98	98	97	92	88	86	85	99	87
2160	886	19318	97	100	101	97	97	95	94	92	102	91
	1751	14794	97	99	99	96	94	91	90	89	100	88
	2160	12144	96	99	100	97	94	90	89	87	100	88
	2509	8489	95	99	100	98	94	89	88	87	100	88
2280	987	20391	98	101	102	99	98	97	95	94	104	92
	1950	15616	98	100	101	98	96	92	91	90	101	90
	2406	12818	97	100	101	99	96	92	90	89	101	90
	2796	8960	96	100	101	100	96	91	89	88	101	90
2425	1117	21688	99	103	103	101	100	98	96	95	105	94
	2206	16609	99	102	102	100	97	94	93	91	103	91
	2722	13633	98	102	102	101	98	93	91	90	103	91
	3163	9530	97	102	103	101	98	93	90	89	103	91

YFBCSL-630

			SOUND POWER									
			OCTAVE BANOS									
RPM	Pa	Volume	1	2	3	4	5	6	7	8	LWia	dB(A)
740	131	9323	75	77	77	76	75	73	72	71	80	69
	258	7139	74	76	75	72	70	70	68	66	77	65
	319	5860	74	76	76	72	69	69	67	65	76	65
	370	4097	75	76	76	71	68	67	66	65	75	64
840	168	10582	78	80	80	79	78	76	75	74	84	72
	333	8104	76	79	79	76	73	73	71	69	80	68
	410	6652	77	80	79	75	72	72	70	69	79	68
	477	4650	78	80	80	75	71	70	69	68	79	67
940	211	11842	81	84	82	82	80	79	78	77	86	75
	417	9069	79	82	81	79	76	76	74	72	83	71
	514	7444	80	83	82	78	75	74	73	71	82	71
	597	5204	81	83	83	78	74	73	72	71	82	70
1025	251	12913	83	86	84	84	83	81	80	79	88	77
	495	9889	82	84	83	81	78	77	76	74	85	73
	611	8117	82	85	84	81	77	76	75	73	84	73
	710	5674	83	85	85	81	76	75	74	73	84	72
1085	281	13669	85	87	85	85	84	82	81	80	90	78
	555	10468	84	86	84	83	79	79	77	75	86	75
	685	8592	84	86	85	83	79	77	76	75	86	74
	796	6006	84	86	86	82	78	76	75	74	85	74
1155	318	14551	87	89	87	87	85	84	82	81	91	80
	629	11143	85	87	86	84	81	80	79	77	88	76
	776	9147	85	88	87	84	80	79	78	76	87	76
	902	6394	86	88	87	84	80	78	77	76	87	75
1225	358	15433	88	90	89	88	87	85	84	83	93	81
	708	11819	87	89	88	86	83	81	80	78	89	78
	873	9701	87	89	88	86	82	80	79	78	89	77
	1014	6781	87	89	89	86	81	79	78	77	88	77
1290	397	16251	90	91	90	89	88	86	85	84	94	82
	785	12446	89	90	89	88	84	82	81	79	91	79
	968	10216	88	90	90	88	83	81	80	79	90	79
	1125	7141	88	91	90	88	83	80	79	78	90	78
1365	445	17196	91	93	92	91	89	88	86	85	95	84
	878	13169	90	91	91	89	85	84	83	81	92	81
	1084	10810	90	92	91	89	85	83	82	80	92	80
	1259	7556	89	92	92	90	84	82	81	79	91	80
1440	495	18141	93	94	93	92	90	89	88	86	96	85
	978	13893	92	92	92	91	87	85	84	82	93	82
	1206	11404	91	93	93	91	86	84	83	81	93	82
	1401	7972	91	93	93	91	86	83	82	81	93	81
1565	585	19716	95	96	96	94	92	91	89	88	99	87
	1155	15099	94	94	95	93	89	87	86	84	96	84
	1425	12394	93	95	95	94	88	86	85	83	95	84
	1655	8664	93	96	95	94	88	85	84	83	95	84
1670	666	21039	97	97	98	96	94	93	91	90	100	89
	1315	16112	96	96	97	95	91	88	88	86	97	86
	1622	13225	95	96	97	96	90	87	86	85	97	86
	1885	9245	94	97	97	96	90	86	85	84	97	86
1735	718	21858	98	98	99	97	95	94	92	91	101	90
	1419	16739	97	97	98	96	92	89	89	87	98	87
	1751	13740	96	97	98	97	91	88	87	86	98	87
	2034	9605	95	98	98	97	91	87	86	85	98	87
1825	795	22991	99	100	100	98	96	95	93	92	102	91
	1570	17607	99	98	99	97	93	90	90	88	100	88
	1937	14453	97	99	99	98	93	89	89	87	99	88
	2251	10103	96	99	99	99	92	88	87	86	99	88
1935	894	24377	100	101	102	99	98	96	94	93	104	92
	1765	18669	100	100	101	98	95	92	91	89	101	89
	2178	15324	98	100	101	99	94	91	90	88	101	89
	2530	10712	97	101	101	100	94	90	89	88	101	89
2045	998	25763	101	103	103	100	99	98	96	95	105	93
	1972	19730	101	101	102	99	96	93	92	91	102	91
	2432	16195	99	102	102	100	96	92	91	90	102	91
	2826	11321	98	102	102	101	96	91	90	89	102	91
2115	1068	26645	101	104	104	101	100	98	97	95	106	94
	2109	20405	101	102	103	100	97	94	93	92	103	91
	2602	16749	100	103	103	101	97	93	92	91	103	91
	3023	21708	99	103	103	101	97	92	91	90	103	91
2235	1192	28757	102	105	105	102	101	100	98	97	107	96
	2355	21563	102	104	104	101	99	95	94	93	104	93
	2905	17700	101	104	104	102	99	95	93	92	104	93
	3376	12373	100	104	105	103	99	94	92	91	104	93

Sound Data

Sound Data

YFBCSL-900

			SOUND POWER									
			OCTAVE BANOS									
RPM	Pa	Volume	1	2	3	4	5	6	7	8	LWIA	dB(A)
470	109	17944	74	78	76	76	73	70	67	64	78	67
	224	13586	73	75	71	70	68	66	63	60	73	62
	265	10598	75	77	71	70	67	64	61	58	73	61
	305	6985	77	79	72	69	66	63	60	57	72	61
530	138	20235	77	82	78	79	76	74	71	68	82	70
	285	15320	75	80	74	74	71	69	66	63	77	65
	337	11951	77	82	74	73	70	68	65	62	76	64
	388	7876	79	84	75	72	69	67	64	61	76	64
570	160	21762	78	83	80	81	78	75	72	69	83	72
	329	16476	77	81	75	75	73	71	68	65	78	67
	390	12853	79	83	76	75	72	69	66	63	78	66
	449	8471	81	86	77	74	71	68	66	63	78	66
650	208	24816	81	85	82	84	82	79	76	73	87	75
	428	18789	80	83	78	79	76	74	71	68	82	70
	507	14657	82	86	79	78	75	73	70	67	81	70
	584	9660	84	88	80	78	74	72	69	66	81	69
720	255	27489	84	87	86	86	84	82	79	76	89	78
	525	20812	83	86	82	81	79	76	74	71	84	73
	622	16236	85	88	83	81	78	75	73	70	84	72
	716	10700	86	90	84	80	77	74	72	69	84	72
800	315	30543	88	90	89	88	87	84	81	78	92	80
	648	23124	86	88	86	83	81	79	76	73	87	75
	768	18040	88	90	87	83	80	78	75	72	87	75
	884	11889	89	92	89	83	80	77	74	71	87	75
865	368	33025	90	91	92	90	89	86	83	80	94	82
	758	25003	88	90	89	85	83	81	78	75	89	77
	898	19505	90	92	90	85	82	80	77	74	89	77
	1034	12855	91	94	92	85	82	79	76	73	89	77
915	412	34934	92	92	94	91	90	88	85	82	95	84
	848	26448	90	91	91	86	85	82	80	77	90	79
	1004	20633	91	93	93	86	84	81	79	76	90	79
	1157	13598	93	95	95	87	83	80	78	75	91	79
970	463	37034	94	93	95	92	89	86	83	80	97	85
	953	28038	92	92	93	88	86	84	81	78	92	81
	1129	21873	93	94	95	88	86	83	80	77	92	81
	1300	14415	94	96	97	88	85	82	79	76	93	81
1040	532	39706	96	95	98	93	93	91	88	85	98	87
	1096	30062	94	94	96	89	88	86	83	80	94	82
	1298	23451	95	95	98	89	87	84	82	79	94	83
	1494	15455	96	98	100	90	87	83	81	78	95	83
1110	606	42379	98	96	99	95	95	93	90	87	100	89
	1248	32085	96	95	97	91	90	87	85	82	96	84
	1478	25030	97	97	100	91	89	86	84	81	96	84
	1702	16496	98	99	102	92	89	85	83	80	97	85
1190	697	45433	101	98	101	96	97	95	92	89	102	90
	1435	34398	98	96	99	92	92	89	87	84	97	86
	1699	26834	99	98	101	93	91	88	86	83	97	86
	1957	17684	100	100	103	93	90	87	85	82	98	87
1260	781	48106	103	99	102	97	98	96	93	90	103	92
	1609	36421	100	98	100	93	93	90	88	85	99	87
	1905	28412	101	99	102	94	93	89	87	84	99	87
	2194	18725	102	101	104	95	92	88	86	83	99	88
1325	864	50587	104	100	103	99	99	97	94	91	104	93
	1779	38300	101	99	101	95	94	92	89	87	100	88
	2106	29878	102	101	103	96	94	90	88	85	100	88
	2426	19691	103	103	105	97	93	90	87	84	101	89
1405	971	53642	105	102	104	101	101	99	96	93	106	94
	2000	40612	102	101	102	97	96	93	91	88	101	90
	2368	31682	103	102	104	98	95	92	90	87	102	90
	2728	20879	104	104	106	99	95	91	89	86	102	91
1480	1078	56505	106	104	105	102	102	100	97	94	107	95
	2219	42780	103	102	103	99	97	94	92	89	103	91
	2628	33373	104	104	105	100	97	93	91	88	103	91
	3026	21994	105	106	107	101	96	93	90	87	104	92
1560	1197	59560	107	105	106	104	103	101	99	96	108	97
	2466	45093	104	104	104	101	98	96	94	91	104	93
	2920	35177	105	105	106	102	98	95	92	90	104	93
	3363	23183	106	107	108	104	98	94	91	89	105	94
1660	1356	63377	108	107	107	106	104	103	100	97	110	98
	2792	47983	105	106	105	103	99	97	95	92	106	94
	3306	37432	106	107	107	105	99	97	94	91	106	95
	3807	24669	107	109	110	106	99	96	93	90	107	96

YFBCSL-1000

			SOUND POWER								声功率级		声压级	
			OCTAVE BANOS											
RPM	Pa	Volume	1	2	3	4	5	6	7	8	LWIA	dB(A)		
425	110	22258	76	78	77	77	74	71	68	65	79	68		
	226	16852	75	75	72	71	69	66	63	60	74	63		
	268	13146	77	77	72	70	68	65	62	59	73	62		
	308	8664	79	78	72	69	67	64	61	58	73	61		
480	140	25139	79	82	79	80	77	74	71	68	82	71		
	288	19032	77	80	75	74	72	69	66	63	77	66		
	341	14847	79	81	75	73	71	68	65	62	77	65		
	393	9785	81	84	76	73	70	67	64	61	76	65		
540	177	28281	81	86	82	82	80	77	74	71	85	74		
	365	21411	80	84	78	77	75	72	69	66	80	69		
	432	16703	82	86	78	77	73	71	68	65	80	68		
	497	11008	84	88	79	76	72	70	67	64	80	68		
580	204	30376	82	87	83	84	82	79	76	73	87	76		
	421	22997	81	85	79	79	76	74	71	68	82	71		
	498	17941	83	87	80	78	75	73	70	67	81	70		
	574	11823	85	90	80	78	74	72	69	66	81	70		
645	253	33780	85	89	85	87	85	82	79	76	90	78		
	520	25575	84	87	81	82	79	77	74	71	85	73		
	616	19951	85	89	82	81	78	76	73	70	84	73		
	710	13148	87	91	83	81	77	75	72	69	84	72		
730	324	38232	88	91	89	89	88	85	82	79	93	81		
	667	28945	87	90	86	85	82	80	77	74	88	76		
	789	22580	89	92	87	84	81	79	76	73	87	76		
	909	14881	91	94	88	84	80	78	75	72	87	76		
820	408	42945	92	94	93	92	91	88	85	82	96	84		
	841	32514	91	92	90	87	85	83	80	77	91	79		
	996	25364	92	94	92	87	84	82	79	76	91	79		
	1147	16716	94	96	93	87	83	81	78	75	91	79		
882	473	46192	95	95	96	93	93	90	87	84	97	86		
	973	34972	93	94	93	89	87	85	82	79	93	81		
	1152	27282	94	96	95	89	86	84	81	78	93	81		
	1327	17980	96	98	96	89	85	83	80	77	93	81		
935	531	48968	97	96	98	94	94	92	89	86	99	87		
	1094	37074	95	95	95	90	89	86	84	81	94	83		
	1295	28922	96	97	97	90	88	85	83	80	94	83		
	1491	19060	97	99	99	90	87	84	82	79	95	83		
970	572	50801	98	97	99	95	95	93	90	87	100	88		
	1177	38461	96	96	96	91	90	87	85	82	95	84		
	1394	30004	97	98	98	91	89	86	84	81	95	84		
	1605	19774	98	100	100	91	88	85	83	80	96	84		
1005	614	52634	99	98	100	96	96	93	90	87	101	89		
	1263	39849	97	96	98	92	91	88	86	83	96	85		
	1496	31087	98	98	100	92	90	87	84	81	96	85		
	1723	20487	99	100	102	92	89	86	83	80	97	86		
1060	683	55514	101	99	102	97	97	95	92	89	102	91		
	1406	42030	98	98	100	93	92	89	87	84	98	86		
	1664	32788	100	99	102	93	91	88	86	83	98	86		
	1917	21608	101	102	104	94	91	87	85	82	99	87		
1120	762	58657	103	100	103	98	98	96	93	90	103	92		
	1569	44409	100	99	101	94	93	91	88	85	99	88		
	1858	34644	101	101	103	95	93	89	87	84	99	88		
	2140	22831	102	103	106	95	92	89	86	83	100	89		
1185	853	62061	104	101	104	99	100	98	95	92	105	93		
	1757	46986	102	100	102	95	95	92	90	87	100	89		
	2080	36655	103	102	104	96	94	91	89	86	101	89		
	2395	24156	104	104	106	97	94	90	88	85	101	90		
1255	957	65727	106	102	105	100	101	99	96	93	106	95		
	1970	49762	104	101	103	97	96	93	91	88	102	90		
	2333	38820	104	103	105	97	96	92	90	87	102	90		
	2687	25583	105	105	107	98	95	91	89	86	103	91		
1320	1058	69131	108	103	106	102	102	101	98	95	107	96		
	2180	52339	105	102	104	98	98	95	93	90	103	91		
	2581	40830	106	104	106	99	97	94	92	89	103	92		
	2972	26908	107	106	108	100	97	93	91	88	104	92		
1400	1191	73321	109	105	107	104	104	102	99	96	109	97		
	2452	55511	106	104	105	100	99	96	94	91	104	93		
	2903	43305	107	106	107	101	98	95	93	90	105	93		
	3343	28539	108	108	110	102	98	94	92	89	105	94		
1480	1331	77511	110	107	108	106	105	103	101	98	110	99		
	2740	58683	107	106	106	102	100	98	95	93	106	94		
	3244	45779	108	107	108	103	100	97	94	92	106	95		
	3736	30170	109	109	111	105	100	96	93	91	107	96		

Sound Data

YFBCSL -1400

			SOUND POWER									
			OCTAVE BANOS									
RPM	Pa	Volume	1	2	3	4	5	6	7	8	LWia	dB(A)
300	98	45906	87	80	80	78	76	72	69	66	81	69
	215	34946	82	75	76	73	72	71	68	65	78	66
	255	26006	84	76	75	73	71	70	68	66	77	66
	286	16736	86	76	74	72	71	70	68	66	77	65
336	122	51415	89	82	83	81	79	75	72	69	84	72
	269	39140	84	77	79	76	74	74	71	68	80	69
	320	29126	86	78	78	75	73	73	71	68	80	68
	359	18745	88	79	77	75	73	73	71	69	80	68
383	159	58607	91	87	86	84	82	79	75	72	87	76
	350	44615	87	82	82	79	77	77	74	71	84	72
	415	33200	89	84	81	79	77	76	74	72	83	72
	467	21367	91	85	80	78	76	76	74	72	83	71
440	210	67329	95	93	89	88	86	82	79	76	91	79
	462	51255	90	88	84	83	81	80	78	75	87	76
	548	38142	93	90	84	82	80	79	78	75	87	75
	616	24547	95	92	84	82	80	79	78	75	86	75
493	264	75439	98	98	91	91	89	86	82	79	94	82
	580	57428	94	93	87	86	83	82	81	78	90	78
	688	42736	96	96	87	85	83	82	81	78	90	78
	773	27503	98	97	87	84	82	81	80	78	90	78
522	295	79876	99	101	93	92	90	87	83	80	95	84
	650	60807	95	96	88	87	85	84	82	79	91	80
	772	45250	98	98	88	87	84	83	82	80	91	80
	867	29121	100	100	88	86	84	83	82	80	91	80
550	328	84161	100	102	94	93	91	89	85	82	97	85
	722	64068	97	97	89	89	86	85	84	81	93	81
	857	47677	99	100	89	88	85	84	83	81	93	81
	963	30683	101	102	90	87	85	84	83	81	93	81
592	380	90588	102	104	96	95	93	91	87	84	99	87
	836	68961	99	99	91	91	88	86	86	83	94	83
	992	51318	101	101	91	90	87	86	85	83	94	83
	1115	33026	103	103	92	89	87	85	85	83	94	83
630	430	96403	104	105	97	97	95	92	88	85	100	89
	947	73387	100	100	92	92	89	88	87	84	96	84
	1124	54612	103	102	93	91	89	87	87	84	96	84
	1263	35146	105	105	93	90	88	87	86	84	96	84
665	479	101758	105	106	98	98	96	94	90	87	101	90
	1055	77464	102	101	93	94	91	89	89	86	97	86
	1252	57646	104	103	94	93	90	88	88	86	97	85
	1407	37099	106	105	95	92	90	88	88	86	97	86
700	531	107114	106	107	99	99	97	95	91	88	103	91
	1169	81541	103	102	94	95	92	90	90	87	98	87
	1388	60680	106	104	95	94	91	89	89	87	98	87
	1559	39052	108	106	96	93	91	89	89	87	98	87
740	594	113235	107	108	102	100	99	97	93	90	104	93
	1306	86201	104	103	97	96	94	91	91	88	100	88
	1551	64147	107	106	98	95	93	91	91	88	100	88
	1743	41283	109	108	99	95	92	90	90	88	100	88
785	668	120121	108	109	104	102	100	98	94	91	106	94
	1470	91443	105	105	99	98	95	93	92	90	101	90
	1745	68048	108	107	101	97	94	92	92	90	101	90
	1961	43794	110	109	102	96	94	92	91	90	101	90
825	738	126242	109	111	106	103	101	99	96	92	107	95
	1623	96102	106	106	101	99	96	94	94	91	103	91
	1927	71515	109	109	103	98	96	93	93	91	103	91
	2166	46025	111	111	104	97	95	93	93	91	103	91
875	830	133893	110	112	109	104	103	101	97	94	109	97
	1826	101927	107	108	104	100	98	96	95	93	104	93
	2168	75850	110	110	106	99	97	95	94	93	104	93
	2437	48814	112	112	107	99	97	95	94	92	105	93
940	958	143839	111	114	112	106	104	103	99	96	111	99
	2108	109498	108	110	107	101	100	97	96	95	106	95
	2502	81484	111	112	109	101	99	97	96	94	106	95
	2812	52441	113	114	111	101	98	96	95	94	107	96
985	1052	150725	112	115	114	107	106	104	101	97	112	100
	2314	114740	109	111	109	102	101	99	97	96	107	96
	2747	85385	112	114	111	102	100	98	97	96	108	96
	3088	54951	114	116	113	102	99	97	96	95	109	97
1040	1173	159141	113	116	117	108	107	105	102	98	114	102
	2580	121147	110	113	112	103	102	100	99	97	109	98
	3063	90153	113	115	114	103	101	99	98	97	110	98
	3442	58019	115	117	116	104	101	99	98	97	111	99

YFBCSL -1600

RPM	Pa	Volume	SOUND POWER								LW/A	dB(A)
			OCTAVE BANOS									
			1	2	3	4	5	6	7	8		
280	111	63956	90	83	82	81	78	74	71	68	83	72
	244	48687	85	78	78	76	74	73	70	67	80	68
	290	36231	88	78	77	75	74	73	70	68	80	68
	326	23317	90	79	76	75	73	72	70	68	79	68
310	136	70809	92	85	85	83	81	77	74	71	86	74
	299	53904	87	80	81	78	76	76	73	70	82	71
	355	40113	89	81	80	78	76	75	73	70	82	71
	399	25815	91	81	79	77	75	75	73	71	82	70
350	173	79945	94	88	88	86	84	80	77	74	89	78
	382	60859	89	83	84	81	79	79	76	73	85	74
	453	45289	91	84	83	81	78	78	76	73	85	74
	509	29146	94	85	82	80	78	78	76	74	85	73
405	232	92508	97	94	91	90	88	84	81	78	93	81
	511	70422	93	89	87	85	83	82	80	77	89	78
	607	52405	95	91	86	84	82	82	80	77	89	77
	682	33726	98	92	86	84	82	81	80	78	88	77
437	270	99817	99	97	93	92	90	86	83	80	95	83
	595	75987	95	92	88	87	84	84	82	79	91	79
	706	56546	97	94	88	86	84	83	82	79	91	79
	794	36391	100	96	88	86	83	83	81	79	90	79
467	309	106670	101	100	94	93	91	88	85	82	96	85
	679	81203	97	95	90	89	86	85	83	80	93	81
	807	60428	99	97	90	88	85	85	83	81	92	81
	907	38890	101	99	89	87	85	84	83	81	92	81
507	364	115806	103	104	96	95	93	90	87	84	99	87
	801	88158	99	99	92	91	88	87	86	83	95	83
	951	65604	102	101	92	90	88	86	85	83	94	83
	1068	42221	104	103	92	89	87	86	85	83	95	83
545	421	124486	105	107	98	97	95	92	89	86	101	89
	925	94766	101	102	93	93	90	89	88	85	97	85
	1099	70521	104	104	93	92	89	88	87	85	96	85
	1235	45385	106	106	94	91	89	88	87	85	97	85
580	476	132481	106	108	99	99	97	94	90	87	102	91
	1048	100852	103	103	94	94	91	90	89	86	98	87
	1244	75050	105	105	95	93	91	89	89	86	98	86
	1398	48300	107	107	95	93	90	89	88	86	98	87
615	536	140475	108	109	101	100	98	96	92	89	104	92
	1178	106938	104	104	96	96	93	91	91	88	99	88
	1399	79579	107	106	96	95	92	91	90	88	99	88
	1572	51214	109	108	97	94	92	90	90	88	99	88
645	589	147328	109	110	102	101	99	97	93	90	105	93
	1296	112154	106	105	97	97	94	92	92	89	101	89
	1539	83460	108	107	97	96	93	92	91	89	100	89
	1729	53713	110	109	98	95	93	91	91	89	100	89
685	664	156464	110	111	103	103	101	99	95	92	106	95
	1462	119110	107	106	98	99	96	94	93	90	102	91
	1735	88636	110	108	99	98	95	93	93	90	102	90
	1950	57044	112	110	100	97	95	93	93	90	102	90
720	734	164459	111	112	105	104	102	100	96	93	107	96
	1615	125195	108	107	100	100	97	95	95	92	103	92
	1917	93165	111	109	101	99	96	94	94	92	103	92
	2155	59958	113	111	102	98	96	94	94	92	103	92
765	829	174737	112	113	107	105	103	102	98	94	109	98
	1823	133020	109	108	102	101	98	96	96	93	105	93
	2164	98988	112	111	104	100	98	96	95	93	105	93
	2433	63706	114	113	105	100	97	95	95	93	105	93
805	918	183874	113	114	110	106	105	103	99	96	110	99
	2019	139975	110	110	105	102	100	98	97	95	106	95
	2397	104164	113	112	106	101	99	97	97	95	106	95
	2694	67037	115	115	107	101	99	97	96	94	106	95
860	1047	196437	114	116	112	108	106	104	101	98	112	101
	2304	149539	111	112	107	104	101	99	99	96	108	96
	2735	111281	114	114	109	103	101	99	98	96	108	96
	3074	71617	116	116	111	103	100	98	98	96	108	97
905	1160	206715	115	117	115	109	108	106	102	99	114	102
	2552	157364	112	113	110	105	103	100	100	98	109	98
	3029	117103	115	116	112	104	102	100	99	98	109	98
	3404	75364	117	118	113	104	101	99	99	97	110	98
960	1305	219278	116	119	117	110	109	107	104	100	115	104
	2871	166927	113	115	112	106	104	102	101	99	111	99
	3408	124220	116	117	114	106	104	101	100	99	111	100
	3831	79944	118	119	116	106	103	101	100	99	112	100

