



Certified Rating:

Robertson Thermovent FZE certifies that the model RTV-OPL-100 shown here in is licensed to bear the AMCA seal. The rating shown are based on test and procedures performed in accordance with AMCA Publication 511 and comply with the requirements of the AMCA Certified Rating Program. The AMCA Certified rating Seal applies to Air Performance ratings.

OPERABLE LOUVER-RTV-OPL-100

TECHNOLOGY MEETS AESTHETICS



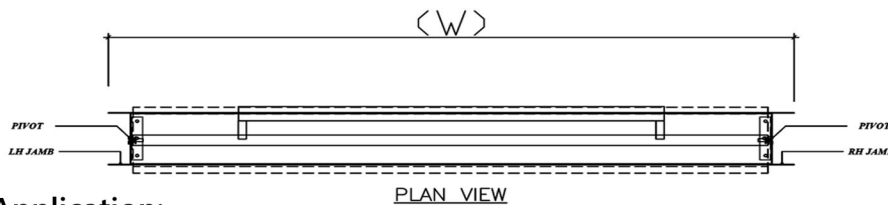
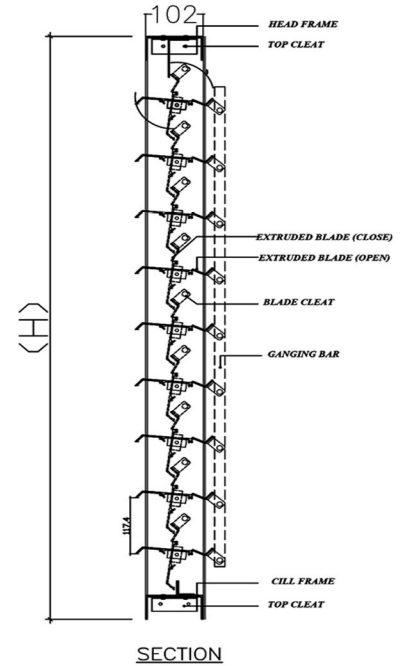
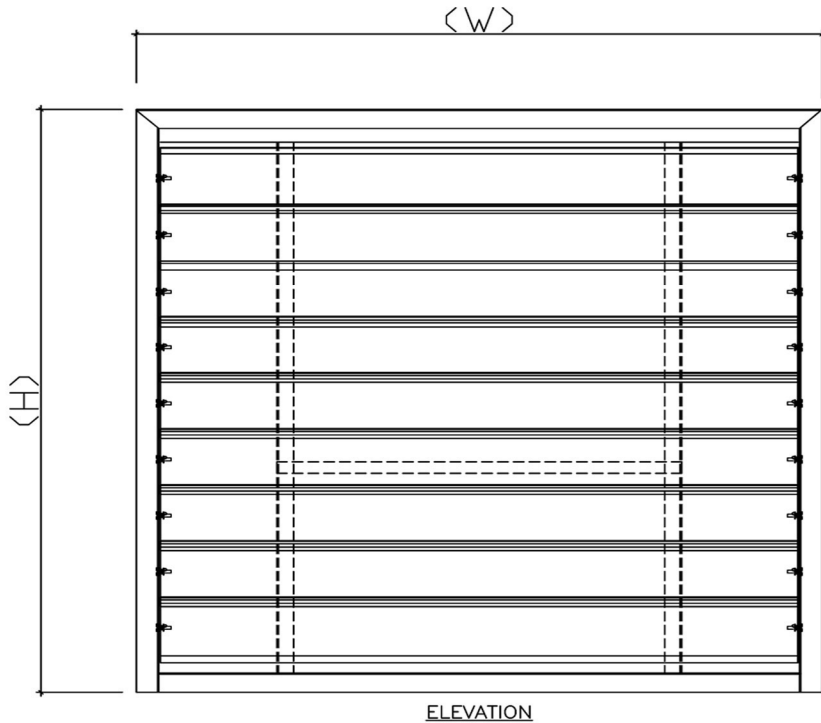
ROBERTSON *THERMOVENT* FZE
ACOUSTIC AND VENTILATION SYSTEMS



Certified Rating:

Robertson Thermovent FZE certifies that the model RTV-OPL-100 shown here in is licensed to bear the AMCA seal. The rating shown are based on test and procedures performed in accordance with AMCA Publication 511 and comply with the requirements of the AMCA Certified Rating Program. The AMCA Certified rating Seal applies to Air Performance ratings.

Model: RTV-OPL-100 OPERABLE LOUVER 100



Application:

The RTV-OPL-100 is widely specified for air movement applications such as building facades exterior air intake and exhaust openings and weather protection of spaces. These device are also usefully employed for industrial applications such as factories, warehouses rolling mills and glass factories. Operating options are available in pneumatic, electrical and manual.

Width (Inches)

	12	18	24	30	36	42	48	54	60	66	72	78	84	90	96	102	108	114	120
12	0.54	0.92	1.29	1.29	2.04	2.42	2.80	3.17	3.55	3.92	4.30	4.68	5.05	5.43	5.80	6.18	6.55	6.93	7.31
18	0.71	1.20	1.69	1.69	2.67	3.16	3.65	4.14	4.63	5.13	5.62	6.11	6.60	7.09	7.58	8.07	8.56	9.05	9.54
24	0.87	1.48	2.08	2.08	3.30	3.90	4.51	5.11	5.72	6.33	6.93	7.54	8.15	8.75	9.36	9.96	10.57	11.18	11.78
30	1.04	1.76	2.48	2.48	3.92	4.64	5.36	6.09	6.81	7.53	8.25	8.97	9.69	10.41	11.14	11.86	12.58	13.30	14.02
36	1.20	2.04	2.88	2.88	4.55	5.38	6.22	7.06	7.89	8.73	9.57	10.40	11.24	12.08	12.91	13.75	14.59	15.42	16.26
42	1.37	2.32	3.27	3.27	5.17	6.13	7.08	8.03	8.98	9.93	10.88	11.84	12.79	13.74	14.69	15.64	16.59	17.55	18.50
48	1.53	2.60	3.67	3.67	5.80	6.87	7.93	9.00	10.07	11.13	12.20	13.27	14.33	15.40	16.47	17.54	18.60	19.67	20.74
54	1.70	2.88	4.06	4.06	6.43	7.61	8.79	9.97	11.15	12.34	13.52	14.70	15.88	17.06	18.25	19.43	20.61	21.79	22.97
60	1.86	3.16	4.46	4.46	7.05	8.35	9.65	10.94	12.24	13.54	14.84	16.13	17.43	18.73	20.02	21.32	22.62	23.91	25.21
66	2.03	3.44	4.85	4.85	7.68	9.09	10.50	11.92	13.33	14.74	16.15	17.56	18.98	20.39	21.80	23.21	24.63	26.04	27.45
72	2.20	3.72	5.25	5.25	8.31	9.83	11.36	12.89	14.41	15.94	17.47	19.00	20.52	22.05	23.58	25.11	26.63	28.16	29.69
78	2.36	4.00	5.65	5.65	8.93	10.57	12.22	13.86	15.50	17.14	18.79	20.43	22.07	23.71	25.36	27.00	28.64	30.28	31.93
84	2.53	4.28	6.04	6.04	9.56	11.31	13.07	14.83	16.59	18.35	20.10	21.86	23.62	25.38	27.13	28.89	30.65	32.41	34.16
90	2.69	4.56	6.44	6.44	10.18	12.06	13.93	15.80	17.67	19.55	21.42	23.29	25.17	27.04	28.91	30.78	32.66	34.53	36.40
96	2.86	4.85	6.83	6.83	10.81	12.80	14.79	16.77	18.76	20.75	22.74	24.73	26.71	28.70	30.69	32.68	34.66	36.65	38.64
102	3.02	5.13	7.23	7.23	11.44	13.54	15.64	17.74	19.85	21.95	24.05	26.16	28.26	30.36	32.47	34.57	36.67	38.78	40.88
108	3.19	5.41	7.63	7.63	12.06	14.28	16.50	18.72	20.93	23.15	25.37	27.59	29.81	32.03	34.24	36.46	38.68	40.90	43.12
114	3.35	5.69	8.02	8.02	12.69	15.02	17.35	19.69	22.02	24.35	26.69	29.02	31.35	33.69	36.02	38.36	40.69	43.02	45.36
120	3.52	5.97	8.42	8.42	13.31	15.76	18.21	20.66	23.11	25.56	28.01	30.45	32.90	35.35	37.80	40.25	42.70	45.14	47.59



Certified Rating:

Robertson Thermovent FZE certifies that the model RTV-OPL-100 shown here in is licensed to bear the AMCA seal. The rating shown are based on test and procedures performed in accordance with AMCA Publication 511 and comply with the requirements of the AMCA Certified Rating Program. The AMCA Certified rating Seal applies to Air Performance ratings.

Configuration:

Supplied in modular factory assembled form.

Material:

Mill finished aluminium alloy extrusion 6063-T6

Screen:

Bird mesh-Crimped aluminium. Options available for insect mesh.

Optional:

PVDF (Kynar) coating,
Polyester powder coated, super durable,
Anodized, colour on request.
Epoxy painted.



Ratings:

Free Area : [48" X 48" (1220X1220mm)] -7.93ft²

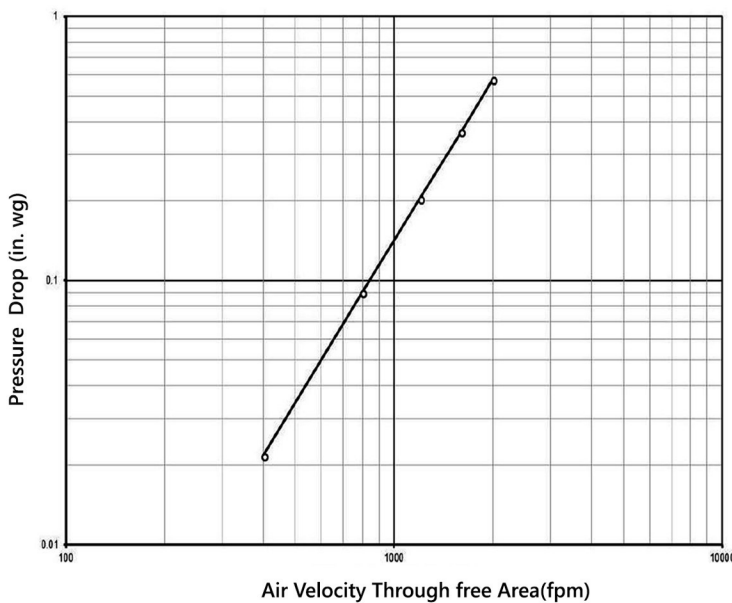
Free Area Velocity : 400 fpm

Air Volume Delivered : 3207 cfm

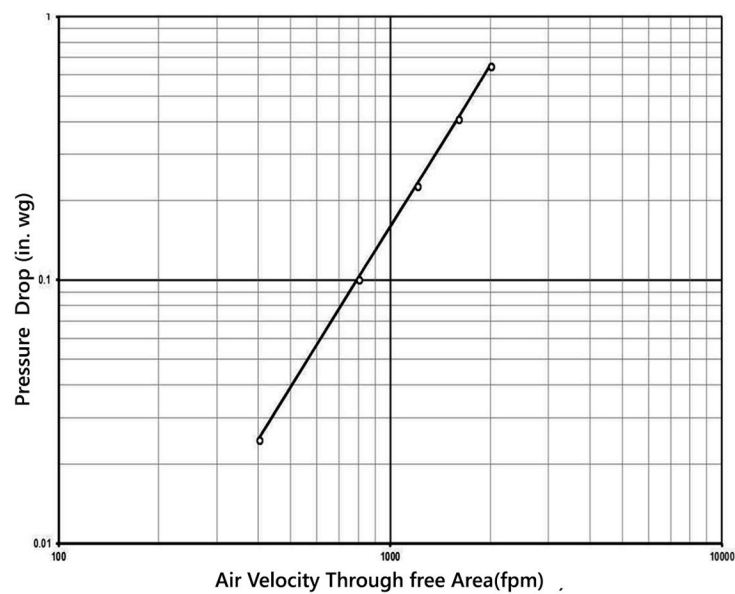
Pressure Loss : 0.025 in.wg

Pressure Loss

Test size: [48"X48"(1220X1220mm)]



Exhaust



Intake



Certified Rating:

Robertson Thermovent FZE certifies that the model RTV-OPL-100 shown here in is licensed to bear the AMCA seal. The rating shown are based on test and procedures performed in accordance with AMCA Publication 511 and comply with the requirements of the AMCA Certified Rating Program. The AMCA Certified rating Seal applies to Air Performance ratings.



Robertson Thermovent FZE

P.O.Box 262148, Dubai - U.A.E

Tel. : +9714 - 880 9300

Fax. : +9714 - 880 9039

E-mail info@robertsonvent.com

www.robertsonvent.com

