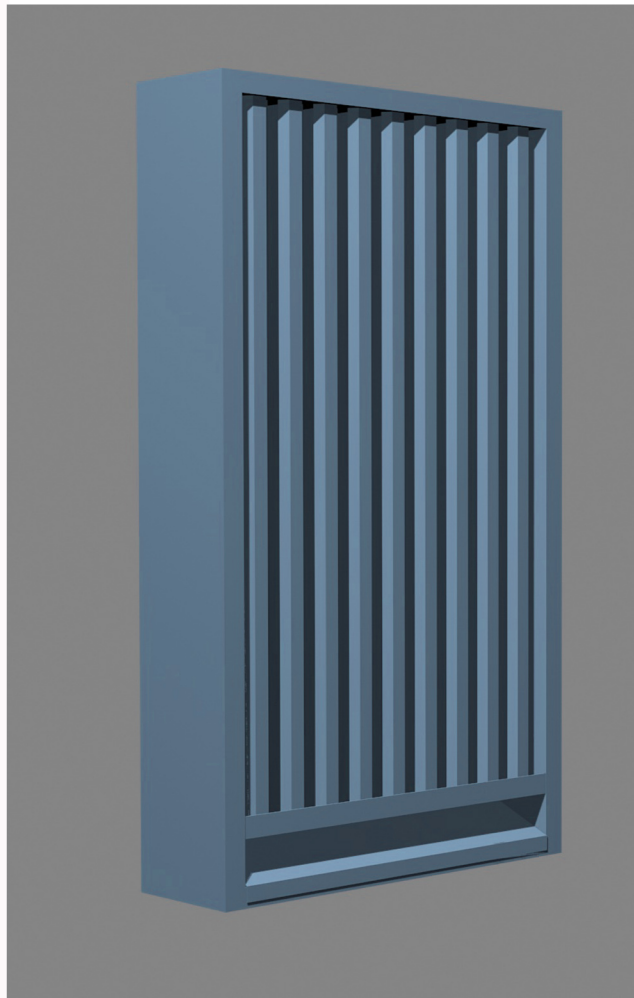


TECHNOLOGY MEETS AESTHETICS



Certified Ratings:

Robertson Thermovent FZE certifies that the model RTV-STL-300 shown herein is licensed to bear the AMCA seal. The ratings shown are based on test and procedures performed in accordance with AMCA publication 511 and comply with the requirements of the AMCA Certified Ratings Program. The AMCA certified rating seal applies to wind driven sand and air performance.



SAND TRAP LOUVER 300

Designers and Specifiers Technical Manual



ROBERTSON *THERMO VENT* FZE
ACOUSTIC AND VENTILATION SYSTEMS

Model : RTV-STL-300 SAND TRAP LOUVER 300mm Deep. Alu.Extruded Blades

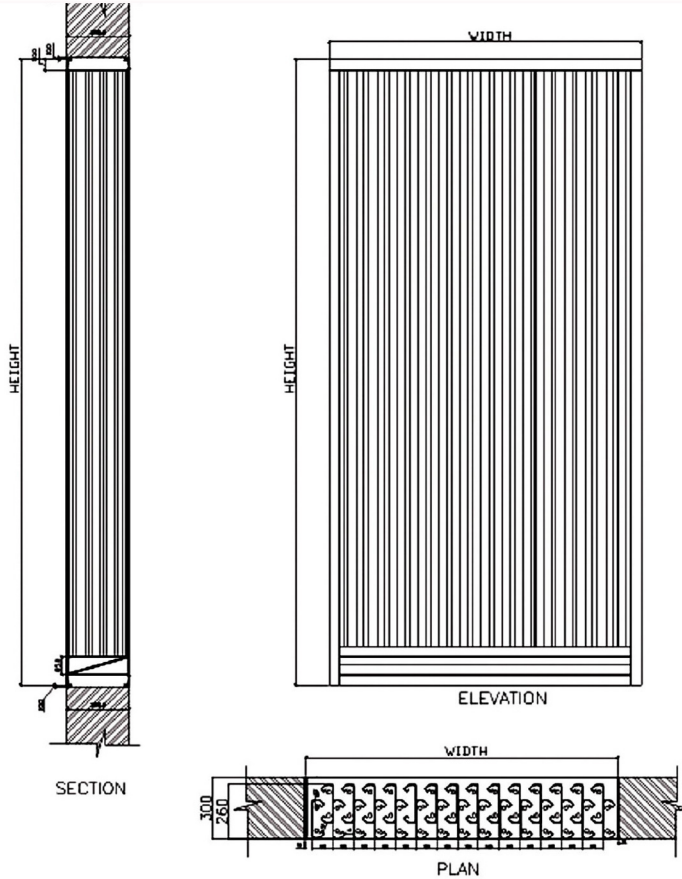


Certified Ratings:

Robertson Thermovent FZE certifies that the model RTV-STL-300 shown herein is licensed to bear the AMCA seal. The ratings shown are based on test and procedures performed in accordance with AMCA publication 511 and comply with the requirements of the AMCA Certified Ratings Program. The AMCA certified rating seal applies to wind driven sand and air performance.

General

Robertson Sand Trap Louvers are designed to achieve the maximum sand separation at nominal air velocity. The entry of sand dust particles into a building can be effectively removed using these vertically bladed louvers especially applied to air intake of generator and plant rooms, rolling mills and glass manufacturing facilities. This louver is constructed from extruded aluminium with multi-faceted elements that provide an ideal sand arresting feature.



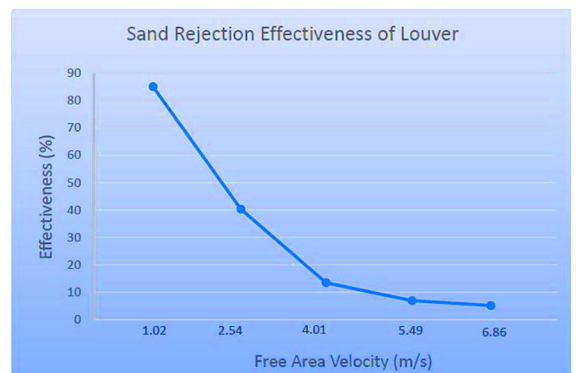
Applications

Ideally suited for installation into structural openings that are constructed into wall cladding either single skin or double wall composite panel, concrete or block wall. Especially designed for

- * Generator and plant room as inlet air devices,
- * Power stations intake manifold.
- * Manufacturing plant air inlet systems coupled with roof ventilators.
- * Air inlets for HVAC ducted systems.

Sand rejection Test

Test No	Airflow Rate m ³ /s	Free Area Velocity m/s	Total Mass Injected g	Total Mass Rejected g	Louver Effectiveness %
1	0.41	1.02	1003	853	85.04
2	1.02	2.54	1002	404	40.32
3	1.61	4.01	2004	269	13.42
4	2.20	5.49	2002	138	6.89
5	2.75	6.86	2001	102	5.10





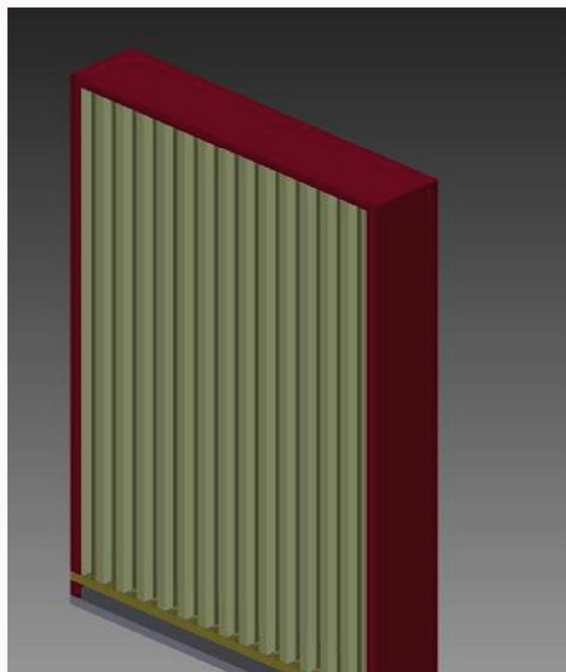
Certified Ratings:

Robertson Thermovent FZE certifies that the model RTV-STL-300 shown herein is licensed to bear the AMCA seal. The ratings shown are based on test and procedures performed in accordance with AMCA publication 511 and comply with the requirements of the AMCA Certified Ratings Program . The AMCA certified rating seal applies to wind driven sand and air performance.

Model : RTV -STL-300

SAND TRAP LOUVER

300mm Deep. Alu. Extruded Blades



Blades

From 2.0mm extruded aluminium alloy 6063-T6 with specially designed elements that interface with each other to provide least resistance to airflow while achieving maximum sand separation.

Head, Cill and Jambs

From 2.0mm extruded aluminium alloy 6063-T6 oriented to provide flat surfaces for simple weathering into structural openings. Sand chutes drain blades at the bottom allow for collected sand to be discharged away from the building.

Sizes

Nominal sizes of 1.2M X 1.2M are available with a maximum size upto 4.5M high. Widths larger than nominal are available in incremental sizes of 100mm to a maximum of 4.5M.

Weights

Normal configuration units would typically weight 22Kg/m2.

Rating include the effect of wind driven sand and air performance.

Free Area : [48" X48"(1220 X 1220mm)] - 4.8ft2

Performance at beginning point:

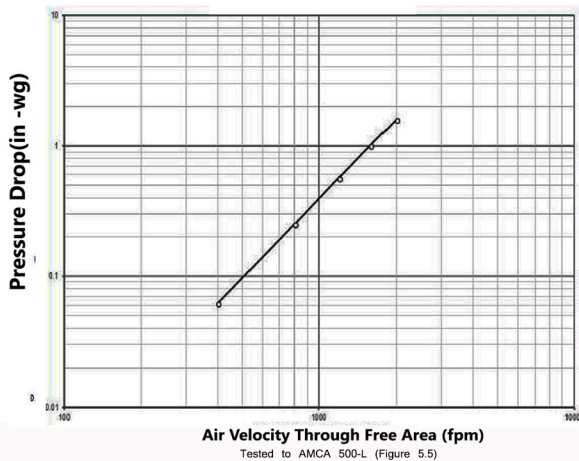
Free Area Velocity : 401 fpm

Air volume delivered :1893 cfm

Pressure Loss : 0.062 in.wg

Pressure Loss

Test size: [48"x48"(1220x1220mm)]



Free Area

Width (Inches)

Height(Inches)	Width (Inches)																		
	12	18	24	30	36	42	48	54	60	66	72	78	84	90	96	102	108	114	120
12	0.07	0.28	0.50	0.71	0.92	1.14	1.35	1.56	1.78	1.99	2.21	2.42	2.63	2.85	3.06	3.27	3.49	3.70	3.92
18	0.09	0.38	0.66	0.95	1.23	1.52	1.80	2.09	2.37	2.66	2.94	3.23	3.51	3.80	4.08	4.37	4.65	4.94	5.22
24	0.14	0.56	0.99	1.42	1.85	2.27	2.70	3.13	3.56	3.98	4.41	4.84	5.27	5.69	6.12	6.55	6.98	7.40	7.83
30	0.18	0.75	1.32	1.89	2.46	3.03	3.60	4.17	4.74	5.31	5.88	6.45	7.02	7.59	8.16	8.73	9.30	9.87	10.44
36	0.20	0.84	1.49	2.13	2.77	3.41	4.05	4.69	5.33	5.97	6.62	7.26	7.90	8.54	9.18	9.82	10.46	11.10	11.75
42	0.23	0.94	1.65	2.36	3.08	3.79	4.50	5.21	5.93	6.64	7.35	8.06	8.78	9.49	10.20	10.91	11.63	12.34	13.05
48	0.25	1.03	1.82	2.60	3.38	4.17	4.95	5.73	6.52	7.30	8.09	8.87	9.65	10.44	11.22	12.00	12.79	13.57	14.36
54	0.29	1.22	2.15	3.07	4.00	4.92	5.85	6.78	7.70	8.63	9.56	10.48	11.41	12.33	13.26	14.19	15.11	16.04	16.97
60	0.34	1.41	2.48	3.54	4.61	5.68	6.75	7.82	8.89	9.96	11.03	12.09	13.16	14.23	15.30	16.37	17.44	18.51	19.58
66	0.36	1.50	2.64	3.78	4.92	6.06	7.20	8.34	9.48	10.62	11.76	12.90	14.04	15.18	16.32	17.46	18.60	19.74	20.88
72	0.38	1.59	2.81	4.02	5.23	6.44	7.65	8.86	10.07	11.28	12.50	13.71	14.92	16.13	17.34	18.55	19.76	20.97	22.19
78	0.41	1.69	2.97	4.25	5.54	6.82	8.10	9.38	10.67	11.95	13.23	14.51	15.80	17.08	18.36	19.64	20.93	22.21	23.49
84	0.43	1.78	3.14	4.49	5.84	7.20	8.55	9.90	11.26	12.61	13.97	15.32	16.67	18.03	19.38	20.73	22.09	23.44	24.80
90	0.45	1.88	3.30	4.73	6.15	7.58	9.00	10.43	11.85	13.28	14.70	16.13	17.55	18.98	20.40	21.83	23.25	24.68	26.10
96	0.47	1.97	3.47	4.96	6.46	7.96	9.45	10.95	12.44	13.94	15.44	16.93	18.43	19.93	21.42	22.92	24.41	25.91	27.41
102	0.50	2.06	3.63	5.20	6.77	8.33	9.90	11.47	13.04	14.60	16.17	17.74	19.31	20.87	22.44	24.01	25.58	27.14	28.71
108	0.52	2.16	3.80	5.44	7.07	8.71	10.35	11.99	13.63	15.27	16.91	18.55	20.18	21.82	23.46	25.10	26.74	28.38	30.02
114	0.54	2.25	3.96	5.67	7.38	9.09	10.80	12.51	14.22	15.93	17.64	19.35	21.06	22.77	24.48	26.19	27.90	29.61	31.32
120	0.56	2.35	4.13	5.91	7.69	9.47	11.25	13.03	14.81	16.60	18.38	20.16	21.94	23.72	25.50	27.28	29.06	30.85	32.63



ROBERTSON THERMOVENT

ACOUSTIC AND VENTILATION SYSTEMS

Robertson Thermovent FZE

P.O.Box 262148, Dubai - U.A.E

Tel. : +9714 - 880 9300

Fax. : +9714 - 880 9039

E-mail : info@robertsonvent.com

www.robertsonvent.com

