

**PRICE® MODEL CA-XAD-6-45-GL**  
**COMBINATION LOUVER**  
**DRAINABLE BLADE. AMCA LICENSED.**



**Standard Construction:**

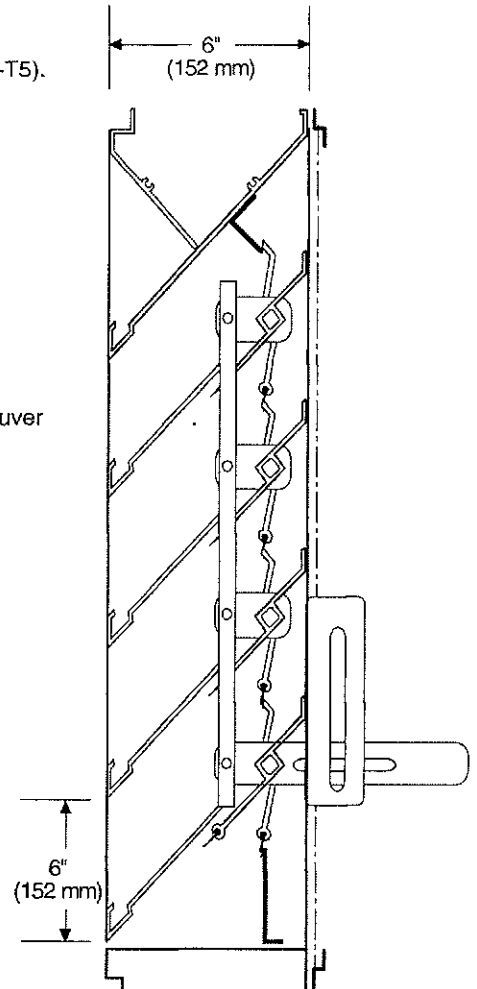
- Frame:** 6" x .081 (152 mm x 2.1 mm) extruded aluminum (6063-T5).
- Stationary Blades:** .081 (2.1 mm) extruded aluminum (6063-T5), approximately 6" (152 mm) on centers.
- Adjustable Blades:** .125 (3.2 mm) extruded aluminum (6063-T5).
- Blade Angle:** 45°
- Bearings:** Permanently lubricated oilite bronze, press fit into frame.
- Axles:** 3/8" (9.5 mm) square plated steel.
- Linkage:** Plated steel concealed in jamb.
- Operator:** Wing nut side bracket.
- Blade Seals:** Extruded Vinyl.
- Jamb Seals:** Flexible stainless steel.
- Screen:** Bird screen - 3/4" x .050 (19 mm x 12.7 mm) flattened expanded aluminum in a removable frame on interior of louver.
- Finish:** Mill aluminum.
- Minimum Section Size:** 12"w x 18"h (25.4 mm x 457 mm)
- Maximum Section Size:** 60"w x 96"h (1524 mm x 2438 mm)

**Options:**

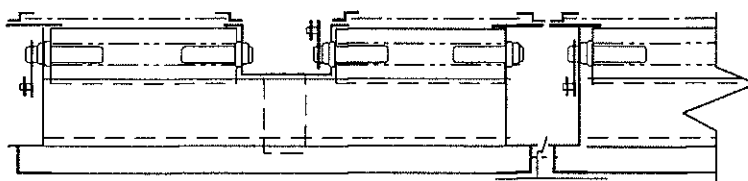
- Screens:** Insect screen - 18 x 16 mesh aluminum.  
Other: \_\_\_\_\_
- Finish:** Prime Coat.  
Baked Enamel.  
Clear Anodize - 204-R1 & 215-R1.  
Integral Color Anodize  
Kynar 500 Enamel.  
Other: \_\_\_\_\_

- Sill Extensions:**
- Flange:** 1-1/2" (38 mm) (front or rear)
- Other Operator:** \_\_\_\_\_

**Notes:** Louvers fabricated 1/4" (6.4 mm) under opening size unless otherwise noted.

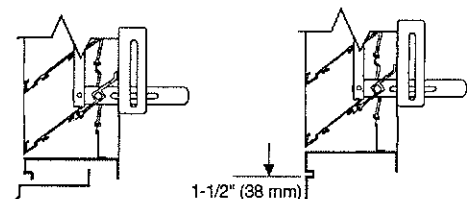


Channel Frame



Jamb

Visible Mullion



Sill Extension

Flange Frame

CA-XAD-6-45-GL - 07-05

Specifications are correct at time of printing. However, as part of our 'continuous improvement program,' we reserve the right to make further improvements without notice. © JULY, 2005 PRICE

Project:	Contractor:
Location:	Address:
Architect:	P.O. Number:
Engineer:	Date:

# PRICE® MODEL CA-XAD-6-45-GL COMBINATION LOUVER DRAINABLE BLADE. AMCA LICENSED.

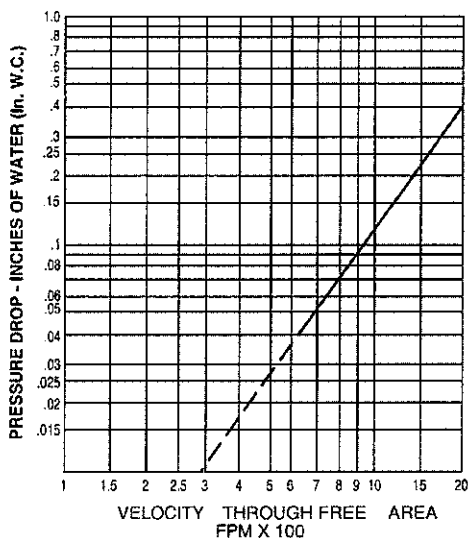
© JULY, 2005 PRICE

## Specifications

Furnish and install where shown model CA-XAD-6-45-GL louver, manufactured by PRICE. Louvers shall be the combination drainable type with a frame depth of 6 inches. Frames and blades shall be .081 inches thick 6063-T5 extruded aluminum alloy. Adjustable blades to .125 inches thick 6063-T5 extruded aluminum alloy. Blades shall be belocated on a 45 degree blade angle. Screens shall consist of 3/4" expanded aluminum, with an extruded frame, mounted to the louver interior, and be removable for cleaning. Louvers shall be finished with Polyurethane Acrylic enamel, Kynar500, Anodize or other finishes selected by the architect from PRICE standard color charts.

### CA-XAD-6-45-GL Free Area in Sq. Ft.

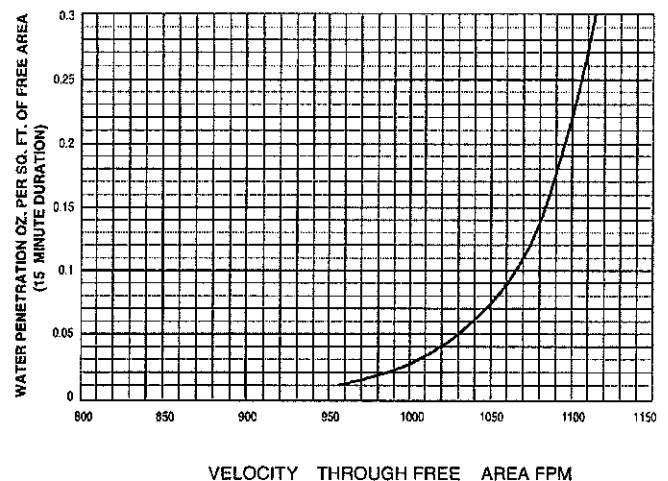
		Width - Inches														
		12	18	24	30	36	42	48	54	60	66	72	78	84	90	96
Height - Inches	12	0.11	0.19	0.26	0.34	0.42	0.49	0.57	0.64	0.72	0.79	0.87	0.94	1.02	1.10	1.17
	18	0.31	0.52	0.73	0.94	1.15	1.36	1.57	1.78	1.99	2.20	2.41	2.62	2.83	3.04	3.25
	24	0.52	0.86	1.20	1.55	1.89	2.24	2.58	2.93	3.27	3.61	3.96	4.30	4.65	4.99	5.33
	30	0.72	1.20	1.67	2.15	2.63	3.11	3.59	4.07	4.55	5.02	5.50	5.98	6.46	6.94	7.42
	36	0.92	1.53	2.14	2.76	3.37	3.98	4.60	5.21	5.82	6.43	7.05	7.66	8.27	8.89	9.50
	42	1.12	1.87	2.62	3.36	4.11	4.86	5.60	6.35	7.10	7.85	8.59	9.34	10.09	10.83	11.58
	48	1.32	2.20	3.09	3.97	4.85	5.73	6.61	7.49	8.37	9.26	10.14	11.02	11.90	12.78	13.66
	54	1.52	2.54	3.56	4.57	5.59	6.60	7.62	8.63	9.65	10.67	11.68	12.70	13.71	14.73	15.75
	60	1.73	2.88	4.03	5.18	6.33	7.48	8.63	9.78	10.93	12.08	13.23	14.38	15.53	16.68	17.83
	66	1.93	3.21	4.50	5.78	7.06	8.35	9.63	10.92	12.20	13.49	14.77	16.06	17.34	18.63	19.91
	72	2.13	3.55	4.97	6.38	7.80	9.22	10.64	12.06	13.48	14.90	16.32	17.74	19.15	20.57	21.99
	78	2.33	3.88	5.44	6.99	8.54	10.10	11.65	13.20	14.76	16.31	17.86	19.41	20.97	22.52	24.07
	84	2.53	4.22	5.91	7.59	9.28	10.97	12.66	14.34	16.03	17.72	19.41	21.09	22.78	24.47	26.16
	90	2.73	4.55	6.38	8.20	10.02	11.84	13.66	15.49	17.31	19.13	20.95	22.77	24.60	26.42	28.24
96	2.93	4.89	6.85	8.80	10.76	12.72	14.67	16.63	18.58	20.54	22.50	24.45	26.41	28.36	30.32	



**PRESSURE DROP INTAKE**  
(Test Size 48" x 48")

E. H. PRICE Limited, Inc. certifies that the Model CA-XAD-6-45-GL louver shown here in is licensed to bear the AMCA seal. The ratings shown are based on tests and procedures performed in accordance with AMCA Publication 511 and comply with the requirements of the AMCA Certified Ratings program.

The AMCA Certified Seal applies to air performance ratings and water penetration ratings.



**Water Penetration**

Water Penetration Data applies to test unit size 48" x 48" only. Beginning of Water Penetration is 957 FPM Free Area Velocity. Performance shown is at standard air density 0.075 lbs./ft.<sup>3</sup>.