



# ***IJB Series***

**INDUCED JET FAN**



## Introduction

### Fan

#### Construction

Double flanged casing is produced in mild steel or galvanized steel. Impeller is made of Aluminum.

#### Finish

Zinc rich primer and polyester powder coating or galvanized finishing are available for all mild steel parts.

#### Motors

Totally enclosed Class 'F' / 'H' motors with a min. IP54 protection are fitted as standard. Motors up to 2.2kW are supplied with DOL starting, motors 3.0kW and above are with star/delta starting.

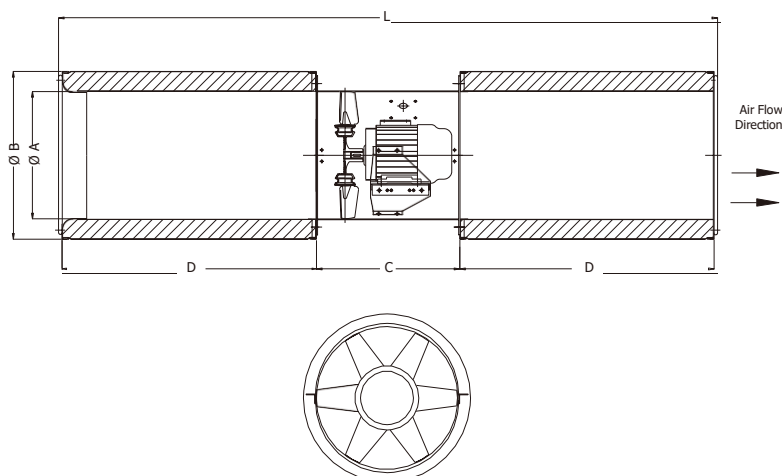
#### Flow Direction

Uni-directional, reversible fan is available upon request.

### Silencer

- Outer casing made of galvanized steel sheet and inner casing made of galvanized steel perforated sheet.
- Inlet bell-mouth provided for smooth airflow.
- Glass fiber as absorption filler material to achieve excellent acoustic performance.
- Each model is available with 2D silencer as standard. Non- standard length to meet special performance requirement can be supplied upon request.

## Dimension



| Model   | A   | B   | C (Max) | D   | L (2D, Max) |
|---------|-----|-----|---------|-----|-------------|
| IJB 315 | 315 | 415 | 355     | 630 | 1635        |
| IJB 355 | 355 | 455 | 400     | 710 | 1840        |
| IJB 400 | 400 | 500 | 450     | 800 | 2060        |
| IJB 450 | 450 | 550 | 500     | 900 | 2310        |

All dimension in mm.

## Certificate



Kruvent Industries (M) Sdn Bhd certifies that the **IJB series** model 315 to 450 shown herein is licensed to bear the AMCA Seal. The ratings shown are based on tests and procedures performed in accordance with AMCA Publication 211 and AMCA Publication 311 and comply with the requirements of the AMCA Certified Ratings Program.



Certified by **TÜV SÜD** which is a leading international service organization focusing on consulting, testing, certification and training.



IJB series was tested in accordance with EN 12101-3:2015.

| Class              | Temperature (°C) | Minimum functioning period (minutes) |
|--------------------|------------------|--------------------------------------|
| F <sub>r</sub> 250 | 250              | 120                                  |
| F <sub>r</sub> 300 | 300              | 60                                   |
| F <sub>r</sub> 300 | 300              | 120                                  |
| F <sub>r</sub> 400 | 400              | 120                                  |

# Induced Jet Fan - IJB Series

KRUGER

## Technical Data

| Model   | Maximum Flow Rate (m <sup>3</sup> /h) | Outlet Velocity (m/s) | Thrust Force (N) | Absorbed Power at free discharge (kW) | Installed Power (kW) |           | Speed (RPM) | Hz | Voltage (V) | Phase | Lw(A) at free discharge dB(A)* | Lp(A) at 3m free discharge dB(A)** |
|---------|---------------------------------------|-----------------------|------------------|---------------------------------------|----------------------|-----------|-------------|----|-------------|-------|--------------------------------|------------------------------------|
|         |                                       |                       |                  |                                       | Single Speed         | Two Speed |             |    |             |       |                                |                                    |
| IJB 315 | 4619                                  | 16                    | 25               | 0.49                                  | 0.55                 | 0.75/0.15 | 2850        | 50 | 400         | 3     | 90                             | 69                                 |
|         | 2350                                  | 8                     | 7                | 0.06                                  | 0.37                 |           | 1450        |    |             |       | 73                             | 52                                 |
| IJB 355 | 7181                                  | 20                    | 48               | 1.11                                  | 1.50                 | 1.5/0.3   | 2850        | 50 | 400         | 3     | 89                             | 68                                 |
|         | 3653                                  | 10                    | 12               | 0.15                                  | 0.37                 |           | 1450        |    |             |       | 70                             | 50                                 |
| IJB 400 | 9443                                  | 21                    | 66               | 1.72                                  | 2.20                 | 2.2/0.44  | 2850        | 50 | 400         | 3     | 90                             | 70                                 |
|         | 4804                                  | 11                    | 17               | 0.23                                  | 0.37                 |           | 1450        |    |             |       | 71                             | 51                                 |
| IJB 450 | 13438                                 | 23                    | 105              | 2.48                                  | 3.00                 | 3.6/0.72  | 2850        | 50 | 400         | 3     | 92                             | 71                                 |
|         | 6837                                  | 12                    | 27               | 0.33                                  | 0.55                 |           | 1450        |    |             |       | 72                             | 52                                 |

\* Values shown are for inlet Lwi(A) sound power levels for installation type A: free inlet, free outlet. The A-weighted sound ratings shown have been calculated per AMCA International Standard 301.

\*\* Inlet Lp(A) sound pressure levels at 3m are measured at free discharge in spherical free field condition, inlet Lp(A) (dB(A)) levels are not licensed by AMCA International.

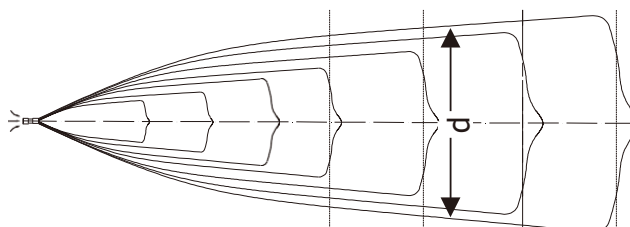
- Power ratings shown are for Kruger motors.

- Performance ratings include the effects of appurtenances (2D inlet silencer and 2D outlet silencer).

- Performance certified is for installation type A - Free inlet, Free outlet.

- The thrust values shown are not licensed by AMCA International.

## Velocity Profile



Note: H - High Speed

L - Low Speed

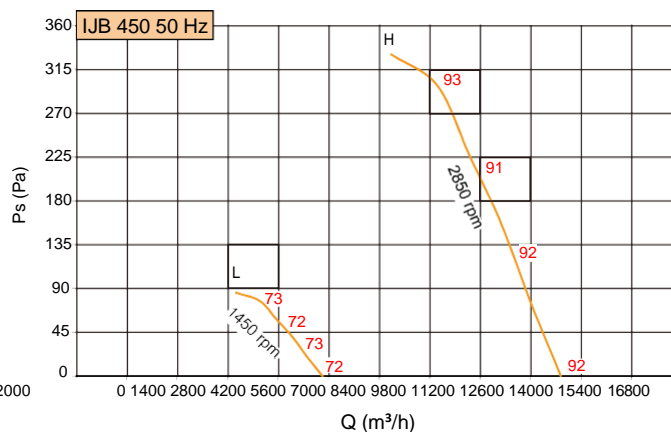
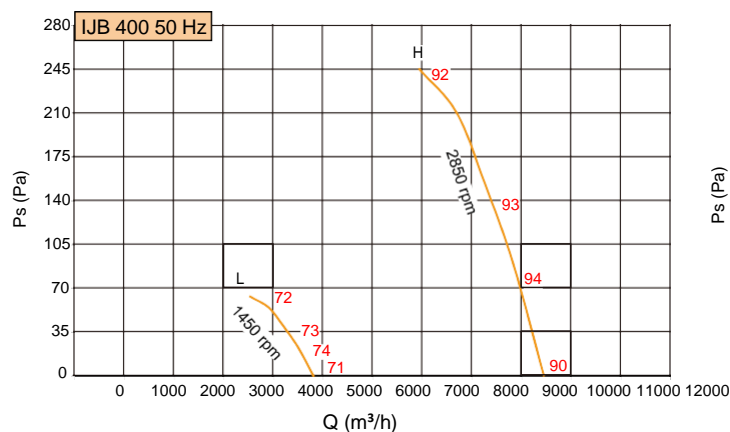
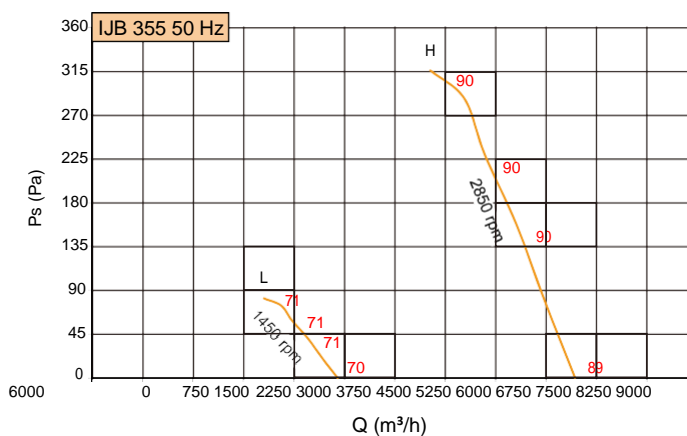
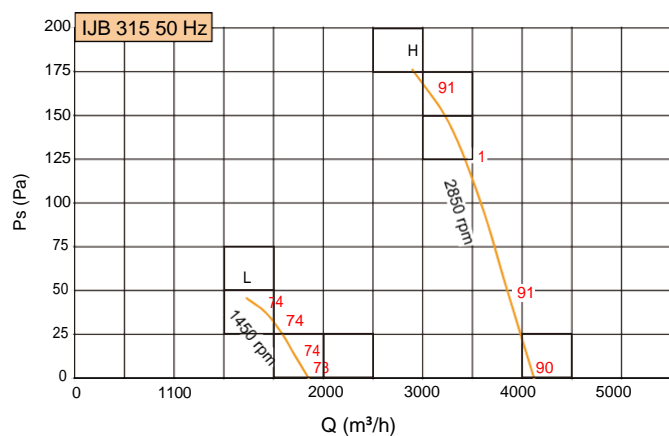
IJB315 IJB355 IJB400 IJB450

| Distance from Nozzle (m)    |           | 2     | 4     | 6    | 8    | 10   | 12   | 14   | 16   | 18   | 20   | 22   | 24    |
|-----------------------------|-----------|-------|-------|------|------|------|------|------|------|------|------|------|-------|
| Flow width d (m)            |           | 0.85  | 1.70  | 2.55 | 3.40 | 4.25 | 5.10 | 5.95 | 6.80 | 7.65 | 8.50 | 9.35 | 10.20 |
| Center Line Velocity (m/s)* | IJB 315 H | 11.29 | 6.97  | 4.86 | 3.74 | 3.03 | 2.55 | 2.19 | 1.83 | 1.47 | 1.10 | 1.05 | 1.00  |
|                             | IJB 315 L | 5.79  | 3.59  | 2.49 | 1.92 | 1.54 | 1.31 | 1.13 | 0.94 | 0.75 | 0.56 | 0.54 | 0.51  |
|                             | IJB 355 H | 13.44 | 9.11  | 6.39 | 4.92 | 4.00 | 3.37 | 2.91 | 2.55 | 2.28 | 2.01 | 1.74 | 1.47  |
|                             | IJB 355 L | 6.58  | 4.48  | 3.15 | 2.41 | 1.97 | 1.64 | 1.43 | 1.26 | 1.12 | 0.99 | 0.85 | 0.72  |
|                             | IJB 400 H | 14.58 | 10.35 | 7.32 | 5.65 | 4.58 | 3.88 | 3.34 | 2.95 | 2.64 | 2.38 | 2.16 | 1.99  |
|                             | IJB 400 L | 7.57  | 5.39  | 3.84 | 2.97 | 2.39 | 2.04 | 1.74 | 1.54 | 1.39 | 1.24 | 1.14 | 1.03  |
|                             | IJB 450 H | 15.43 | 11.29 | 8.62 | 6.63 | 5.41 | 4.58 | 3.95 | 3.49 | 3.12 | 2.82 | 2.57 | 2.37  |
|                             | IJB 450 L | 8.11  | 5.85  | 4.48 | 3.46 | 2.83 | 2.38 | 2.07 | 1.81 | 1.63 | 1.48 | 1.34 | 1.24  |

| Distance from Nozzle (m)    |           | 26    | 28    | 30    | 32    | 34    | 36    | 38    | 40    | 42    | 44    | 46    | 48    |
|-----------------------------|-----------|-------|-------|-------|-------|-------|-------|-------|-------|-------|-------|-------|-------|
| Flow width d (m)            |           | 11.05 | 11.90 | 12.75 | 13.60 | 14.45 | 15.30 | 16.15 | 17.00 | 17.85 | 18.70 | 19.56 | 20.41 |
| Center Line Velocity (m/s)* | IJB 315 H | 0.95  | 0.90  | 0.85  | 0.81  | 0.77  | 0.73  | 0.70  | 0.66  | 0.63  | -     | -     | -     |
|                             | IJB 315 L | -     | -     | -     | -     | -     | -     | -     | -     | -     | -     | -     | -     |
|                             | IJB 355 H | 1.39  | 1.32  | 1.26  | 1.19  | 1.13  | 1.08  | 1.02  | 0.97  | 0.92  | 0.88  | 0.83  | 0.79  |
|                             | IJB 355 L | 0.69  | 0.65  | 0.62  | -     | -     | -     | -     | -     | -     | -     | -     | -     |
|                             | IJB 400 H | 1.85  | 1.65  | 1.46  | 1.38  | 1.31  | 1.25  | 1.19  | 1.07  | 1.02  | 0.97  | 0.93  | 0.89  |
|                             | IJB 400 L | 0.96  | 0.87  | 0.76  | 0.72  | 0.69  | 0.65  | 0.62  | -     | -     | -     | -     | -     |
|                             | IJB 450 H | 2.19  | 2.03  | 1.91  | 1.80  | 1.68  | 1.60  | 1.52  | 1.44  | 1.37  | 1.30  | 1.24  | 1.18  |
|                             | IJB 450 L | 1.13  | 1.05  | 1.00  | 0.93  | 0.87  | 0.83  | 0.79  | 0.75  | 0.72  | 0.68  | 0.65  | 0.61  |

\* Tentative data based on free air jet

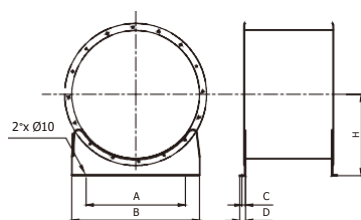
Fan Performance Curve - 50 Hz



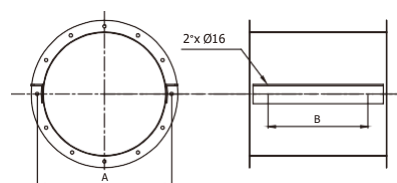
- Values shown are for inlet Lwi(A) sound power levels for installation type A: free inlet, free outlet. The A-weighted sound ratings shown have been calculated per AMCA International Standard 301.
- Performance certified is for installation type A – Free inlet, Free outlet.
- Performance ratings include the effects of appurtenances (2D inlet silencer and 2D outlet silencer).

## Accessories

Mounting Feet



Hanger



Dimension

| Model   | Mounting Feet |     |    |    |     |            | Hanger |     |            |
|---------|---------------|-----|----|----|-----|------------|--------|-----|------------|
|         | A             | B   | C  | D  | H   | Wt/set(kg) | A      | B   | Wt/set(kg) |
| IJB 315 | 265           | 315 | 25 | 50 | 264 | 2.0        | 355    | 263 | 2.2        |
| IJB 355 | 290           | 355 | 25 | 50 | 260 | 2.0        | 395    | 263 | 2.2        |
| IJB 400 | 304           | 400 | 25 | 50 | 265 | 2.5        | 440    | 338 | 2.2        |
| IJB 450 | 375           | 450 | 25 | 50 | 288 | 3.0        | 490    | 338 | 2.4        |

All dimension in mm.

**NOTES**

A full-page sheet of white graph paper featuring a uniform grid of thin black horizontal and vertical lines. The grid covers the entire area of the page, providing a template for drawing or writing.

**NOTES**

This image shows a full page of blank graph paper. The grid consists of small, uniform squares formed by thin gray lines. There are no margins, text, or other markings on the page.

**NOTES**

This image shows a full page of blank graph paper. The grid consists of small, equal-sized squares formed by thin black lines. There are no margins, text, or other markings on the page.

# KRUGER GROUP (VENTILATION)

## • THAILAND (Regional HQ)

### KRUGER VENTILATION INDUSTRIES ASIA CO. LTD.

30/159 Moo 1, Sinsakorn Industrial Estate,  
Chetsadawithi Road, Khok Kham Mueng, Samuthsakorn 74000, Thailand  
Tel. +662 1054298 - Fax +662 0248256-9  
Website: www.krugerfan.com

## • CHINA (BEIJING)

### BEIJING KRUGER VENTILATION CO. LTD

Level 7, A Block, Rising International Building, 29 JingHai SanRoad, BDA,  
Beijing, P.R.China 100176  
Tel. +86 10-67881366 - Fax +86 10-67880566  
Email: krugertj@krugertj.com

## • CHINA (SHANGHAI)

### SHANGHAI KRUGER VENTILATION CO. LTD

No. 500 Yuanguo Road, Anting, Jiading,  
Shanghai 201814 P.R. China  
Tel. +86 21-69573266 - Fax +86 21-69573296  
Email: shkruger@krugerchina.com

## • CHINA (WUHAN)

### WUHAN KRUGER VENTILATION CO. LTD

No. 805, Huian Ave, Dongxihu District, Wuhan, Hubei, P.R.China 430000  
Tel. +86 27- 83248840/83060522/83097505  
Fax +86 27- 83261886  
Email: whkruger@krugerwh.com

## • HONG KONG

### KRUGER VENTILATION (HONG KONG) LIMITED

Flat C, 9/F, Yeung Yiu Chung (No.8) Industrial Building,  
20 Wang Hoi Road, Kowloon Bay, Kowloon, Hong Kong  
Tel. +852 22469182 - Fax +852 22469187  
Email: info@kruger.com.hk

## • INDIA (NORTH)

### KRUGER VENTILATION INDUSTRIES (NORTH INDIA) PVT LTD

Plot No. - 191, Sector - 59, Ballabgarh, Faridabad - 121 004, Haryana, India  
Tel. +91-9958991660/9717449696  
Fax. +91-1294135820  
Email: sales.kni@krugerindia.com

## • KOREA

### NEOMATE CO. LTD

2-1010, Ace High Tech City B/D, 775 Gyeongin-ro,  
Yeongdeungpo-gu, Seoul, Korea. Postal Code 07299  
Tel. +82-2-2679-2052 - Fax. +82-2-2679-2174  
Email: y7890@neomate.co.kr

## • MYANMAR

### KRUGER VENTILATION (MYANMAR) CO.LTD

Room No. F21, Thiri Yadanar Whole SaleMarket, (Htawunbe)  
Toe Chae Ward, North Okkalapa Township, Yangon.  
Tel. +959 763141081/2/3  
Email: htoon@krugermm.com

## • SINGAPORE

### KRUGER ENGINEERING PTE LTD

No. 10 Buroh Street #06-06, WestConnect Building,  
Singapore 627564  
Tel. +65 68631191 - Fax +65 68631151  
Email: mktg@krugerasia.com

## • THAILAND

### KRUGER VENTILATION IND. (THAILAND) CO. LTD

30/105 Moo 1, Sinsakorn Industrial Estate,  
Chetsadawithi Road, Khok Kham Mueng, Samuthsakorn 74000, Thailand  
Tel. +662 1050399 - Fax + 662 1050370-2  
Email: mktg@kruger.co.th

## • AUSTRALIA

### S&P-KRUGER AUSTRALIA PTY LTD

2 Cunningham St, Moorebank N.S.W. 2170  
Tel. +61 2-98227747  
Fax. +61 2-98227757  
Email: info@sandpkruger.com.au

## • CHINA (GUANGZHOU)

### GUANGZHOU KRUGER VENTILATION CO. LTD

No. 9 Huahui Road, Huashan, Huadu,  
Guangzhou, P.R. China 510880  
Tel. +86 20-66356635 - Fax +86 20-86786001/86786500  
Email: gzkru@krugergz.com

## • CHINA (TIANJIN)

### TIANJIN KRUGER VENTILATION CO. LTD

No.168 Anyuan Road, Jingjin Science and Technology Park  
Wuqing District, Tianjin, China  
Tel. +86 22-22143480/3481 - Fax +86 22-22143482  
Email: krugertj@krugertj.com

## • DUBAI

### KRUGER VENTILATION INDUSTRIES, GULF BRANCH

Jebel Ali Free Zone Area (JAFZA) P.O. Box No. 262949, Dubai, UAE  
Tel. +971 4 8819188/8832017  
Fax. +971 4 8832018  
Email: johncs@krugerasia.com

## • INDIA

### KRUGER VENTILATION INDUSTRIES (INDIA) PVT LTD

Kruger Centre, Mumbai-Nasik Highway,  
Kalamgaon, Shahapur, Thane 421601, Maharashtra, India  
Tel. +91 9960558899/9975577211 - Fax +91 2527 240075  
Email: sales@krugerindia.com

## • INDONESIA

### P.T. KRUGER VENTILATION INDONESIA

JL. Teuku Umar No.20,  
Karawaci - Tangerang 15115, Indonesia  
Tel. +62 21-5512288/5513557 - Fax +62 21-5513502  
Email: mktg@krugerindo.co.id

## • MALAYSIA

### KRUVENT INDUSTRIES (M) SDN BHD

Lot 850, Jalan Subang 7, Taman Perindustrian Subang,  
47500, Subang Jaya, Selangor D.E.  
Tel. +603 80743399 - Fax +603 80743388  
Email: mktg@kruger.com.my

## • PHILIPPINES

### KRUGER M&E INDUSTRIES CORPORATION

FAPI Compound, E. Rodriguez Ave.  
Tunasan, Muntinlupa City 1773, Philippines  
Tel. +63 2-8622892/4/6/7, 5534059 - Fax +63 2-8622891  
Email: mktg@krugerp.net

## • TAIPEI

### KRUGER VENTILATION (TAIWAN) CO. LTD

No. 157, Ping-an Rd, Hengfeng Village,  
Dayuan Shiang Taoyuan County 337, Taiwan  
Tel. +886 3-3859119 - Fax +886 3-3859118  
Email: sales@krugertwn.com.tw

## • VIETNAM

### KRUGER VENTILATION INDUSTRIES (VIETNAM) CO. LTD

Lot A7. 2-4, C2 Road, Thanh Thanh Cong IZ,  
Trang Bang Dist. Tay Ninh Province, Vietnam  
Tel. +84-276 3585200/01/02 - Fax +84-276 3585199  
Email: mktg@krugervn.com

The company is always improving and developing its products, therefore the company reserves the right of making changes to the illustrated products.  
Certified dimension can be provided upon request.