



(주) 태일송풍기  
TAE IL BLOWER MFG. Co.,Ltd.

**TPLB**

**SINGLE INLET PLENUM FAN With BACKWARD WHEELS**

# Backward Single Inlet Plenum Fan TPLB Series



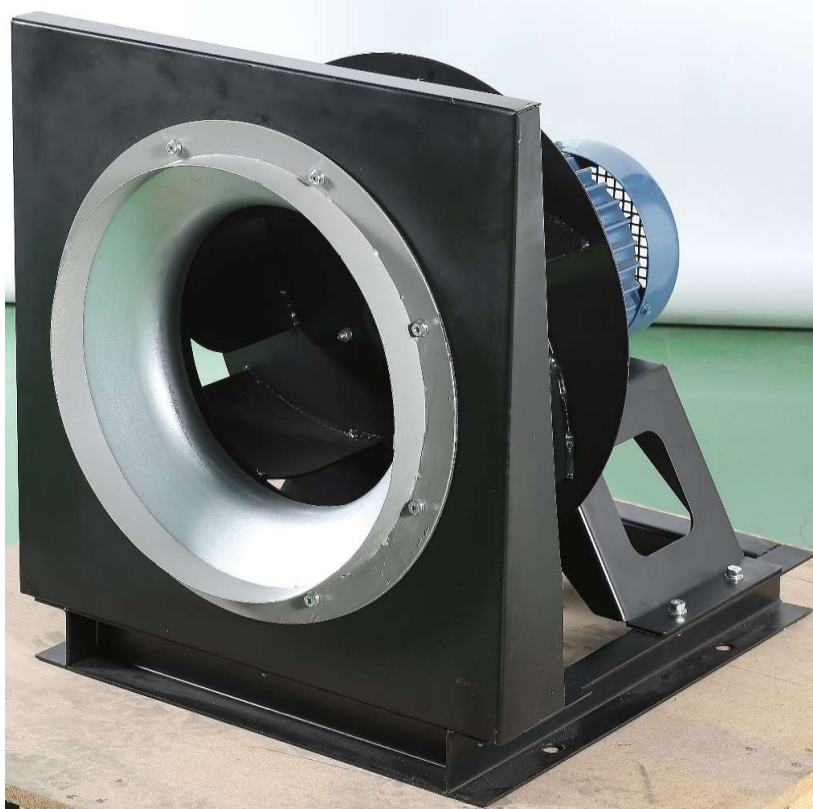
Tae il Blower Mfg. Co., LTD certifies that the TPLB Series shown herein are licensed to bear the AMCA Seal. The ratings shown are based on tests and procedures performed in accordance with AMCA Publication 211 and AMCA Publication 311 and comply with the requirements of the AMCA Certified Ratings Program.

The AMCA certified rating Seal applies to FEG for Models TPLB-450, TPLB-500, TPLB-560, TPLB-630, TPLB-710, TPLB-800, TPLB-900, TPLB-1000

TPLB Series는 AMCA 인증 제품입니다.

BackWard Type의 플리넘 팬으로 50 ~ 200 mmAq의 정압에서 사용되는 제품입니다.

중앙집중 냉/난방설비에 주로 사용되며, 강제 급/배기, 집진, 제진 등의 설비에 사용됩니다.

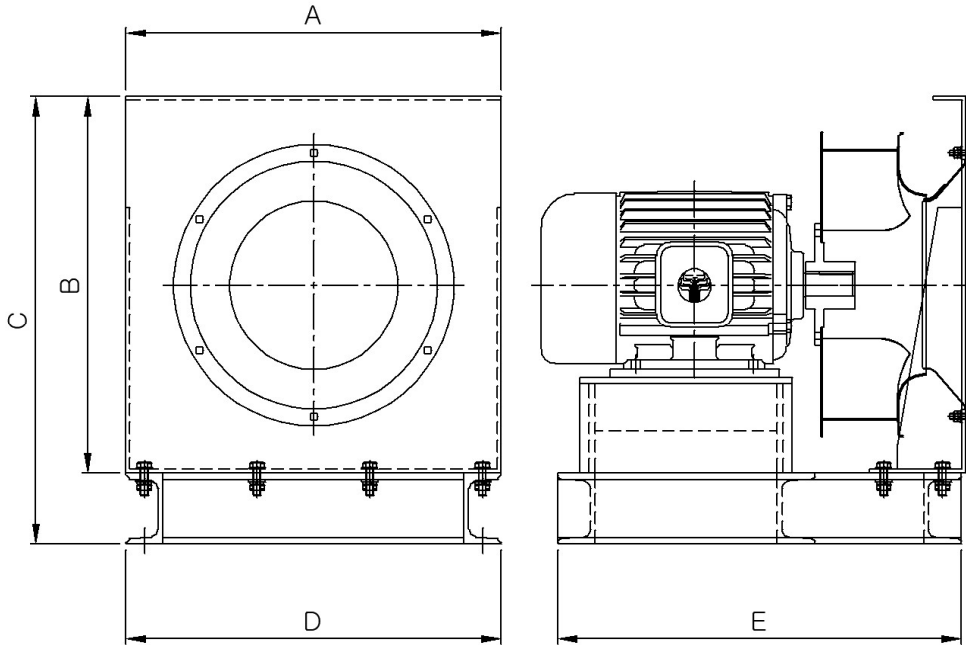


# Backward Single Inlet Plenum Fan

# TPLB Series

## 1. 표준 외형도

Standard Shape of Backward Single Inlet Plenum Fan



## 2. Fan 치수표

NO	Model Name	Wheel Dia.	A	B	C	D	E
1	TPLB-280	288	400	400	475	400	430
2	TPLB-315	324	440	440	515	440	470
3	TPLB-355	365	480	480	555	480	490
4	TPLB-400	411	520	520	595	520	520
5	TPLB-450	462	590	590	665	590	550
6	TPLB-500	513	650	650	725	650	580
7	TPLB-560	574	720	720	795	720	750
8	TPLB-630	646	800	800	875	800	780
9	TPLB-710	728	880	880	980	880	900
10	TPLB-800	820	1000	1000	1100	1000	950
11	TPLB-900	923	1120	1120	1220	1120	1010
12	TPLB-1000	1025	1250	1250	1350	1250	1170

Taeil Blower Co., LTD  
TPLB Series

TPLB-280

BACKWARD FAN



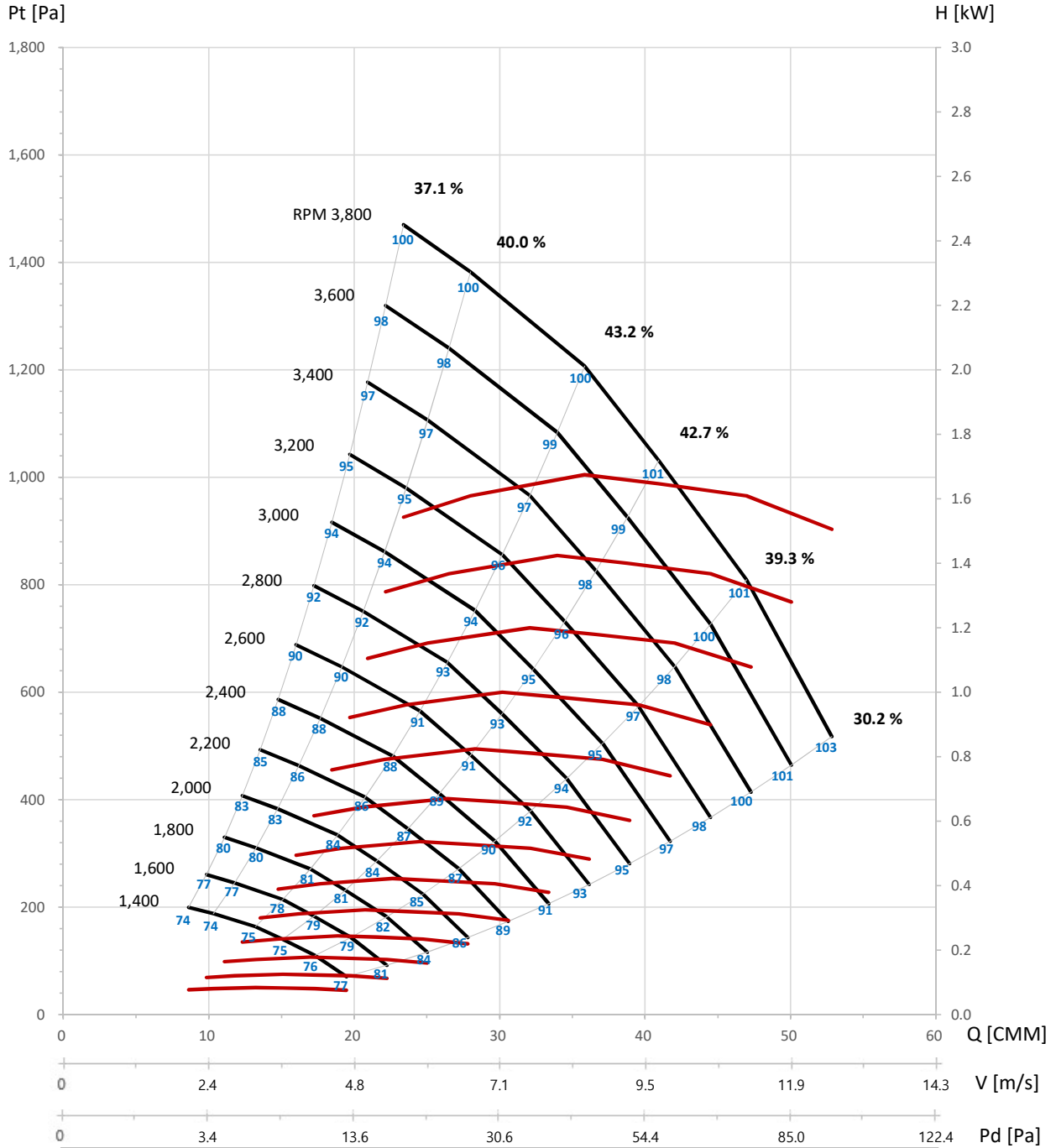
Wheel dia. 288 mm Tip Speed = 0.0151 × rpm Outlet Dim. Outlet Area 0.0700 m<sup>2</sup> Class 1 3966 rpm Class 2 5288 rpm Not Applicable

Det.	N	Pt	Ps	Q	H	EtaT	EtaS	LwO	Det.	N	Pt	Ps	Q	H	EtaT	EtaS	LwO
	[r/min]	[Pa]	[Pa]	[m <sup>3</sup> /min]	[kW]	[%]	[%]	[dB(A)]		[r/min]	[Pa]	[Pa]	[m <sup>3</sup> /min]	[kW]	[%]	[%]	[dB(A)]
1	1400	70	58	19.5	0.08	30.2	25.0	77	1	1600	92	76	22.2	0.11	30.2	25.0	81
2		110	100	17.3	0.08	39.3	35.9	76	2		144	131	19.8	0.12	39.3	35.9	79
3		140	133	15.1	0.08	42.7	40.5	75	3		183	173	17.2	0.12	42.7	40.5	79
4		164	158	13.2	0.08	43.2	41.7	75	4		214	207	15.1	0.13	43.2	41.7	78
5		188	184	10.3	0.08	40.0	39.3	74	5		245	241	11.8	0.12	40.0	39.3	77
6		200	197	8.6	0.08	37.1	36.7	74	6		261	257	9.8	0.12	37.1	36.7	77
1	1800	116	96	25.0	0.16	30.2	25.0	84	1	2000	143	119	27.8	0.22	30.2	25.0	86
2		182	166	22.3	0.17	39.3	35.9	82	2		224	205	24.7	0.23	39.3	35.9	85
3		231	219	19.4	0.18	42.7	40.5	81	3		286	271	21.5	0.24	42.7	40.5	84
4		271	262	17.0	0.18	43.2	41.7	81	4		334	323	18.9	0.24	43.2	41.7	84
5		310	304	13.3	0.17	40.0	39.3	80	5		383	376	14.7	0.23	40.0	39.3	83
6		330	326	11.1	0.16	37.1	36.7	80	6		407	402	12.3	0.22	37.1	36.7	83
1	2200	173	143	30.6	0.29	30.2	25.0	89	1	2400	206	171	33.4	0.38	30.2	25.0	91
2		271	248	27.2	0.31	39.3	35.9	87	2		323	295	29.7	0.41	39.3	35.9	90
3		346	328	23.7	0.32	42.7	40.5	87	3		411	390	25.9	0.41	42.7	40.5	89
4		405	391	20.8	0.32	43.2	41.7	86	4		482	465	22.6	0.42	43.2	41.7	88
5		463	455	16.2	0.31	40.0	39.3	86	5		551	541	17.7	0.41	40.0	39.3	88
6		493	487	13.5	0.30	37.1	36.7	85	6		586	579	14.8	0.39	37.1	36.7	88
1	2600	242	200	36.2	0.48	30.2	25.0	93	1	2800	281	232	38.9	0.60	30.2	25.0	95
2		379	346	32.1	0.52	39.3	35.9	92	2		439	401	34.6	0.64	39.3	35.9	94
3		483	458	28.0	0.53	42.7	40.5	91	3		560	531	30.2	0.66	42.7	40.5	93
4		565	546	24.5	0.54	43.2	41.7	91	4		655	633	26.4	0.67	43.2	41.7	93
5		647	635	19.2	0.52	40.0	39.3	90	5		751	737	20.6	0.64	40.0	39.3	92
6		688	680	16.0	0.49	37.1	36.7	90	6		798	789	17.2	0.62	37.1	36.7	92
1	3000	323	267	41.7	0.74	30.2	25.0	97	1	3200	367	303	44.5	0.90	30.2	25.0	98
2		504	460	37.1	0.79	39.3	35.9	95	2		574	524	39.6	0.96	39.3	35.9	97
3		643	609	32.3	0.81	42.7	40.5	95	3		731	693	34.5	0.98	42.7	40.5	96
4		752	727	28.3	0.82	43.2	41.7	94	4		856	827	30.2	1.00	43.2	41.7	96
5		862	846	22.1	0.79	40.0	39.3	94	5		980	962	23.6	0.96	40.0	39.3	95
6		916	905	18.5	0.76	37.1	36.7	94	6		1043	1030	19.7	0.92	37.1	36.7	95
1	3400	414	343	47.3	1.08	30.2	25.0	100	1	3600	464	384	50.1	1.28	30.2	25.0	101
2		648	591	42.0	1.15	39.3	35.9	98	2		726	663	44.5	1.37	39.3	35.9	100
3		826	783	36.6	1.18	42.7	40.5	98	3		926	877	38.8	1.40	42.7	40.5	99
4		966	934	32.1	1.20	43.2	41.7	97	4		1083	1047	34.0	1.42	43.2	41.7	99
5		1107	1086	25.0	1.15	40.0	39.3	97	5		1241	1218	26.5	1.37	40.0	39.3	98
6		1177	1163	20.9	1.11	37.1	36.7	97	6		1320	1303	22.2	1.31	37.1	36.7	98
1	3800	517	428	52.8	1.51	30.2	25.0	103									
2		809	739	47.0	1.61	39.3	35.9	101									
3		1031	978	40.9	1.65	42.7	40.5	101									
4		1207	1166	35.8	1.67	43.2	41.7	100									
5		1382	1357	28.0	1.61	40.0	39.3	100									
6		1470	1452	23.4	1.54	37.1	36.7	100									

- The A-weighted sound ratings shown have been calculated per AMCA International Standard 301.
- Values shown are for Outlet LwO sound power levels for installation type A - free inlet, free outlet with partition.
- Performance certified is for installation type A - free inlet, free outlet with partition.
- Performance ratings do not include the effects of appurtenances(accessories).
- Power rating (kW) does not include transmission losses.



Wheel dia. 288 mm	Tip Speed = 0.0151 × rpm	Outlet Dim.	Outlet Area 0.0700 m <sup>2</sup>	Class 1 3966 rpm	Class 2 5288 rpm	Not Applicable
-------------------	--------------------------	-------------	-----------------------------------	------------------	------------------	----------------



- The A-weighted sound ratings shown have been calculated per AMCA International Standard 301.  
 - Values shown are for Outlet L<sub>woA</sub> sound power levels for installation type A - free inlet, free outlet with partition.  
 - Performance certified is for installation type A - free inlet, free outlet with partition.  
 - Performance ratings do not include the effects of appurtenances(accessories).  
 - Power rating (kW) does not include transmission losses.

Taeil Blower Co., LTD  
TPLB Series

TPLB-315

BACKWARD FAN



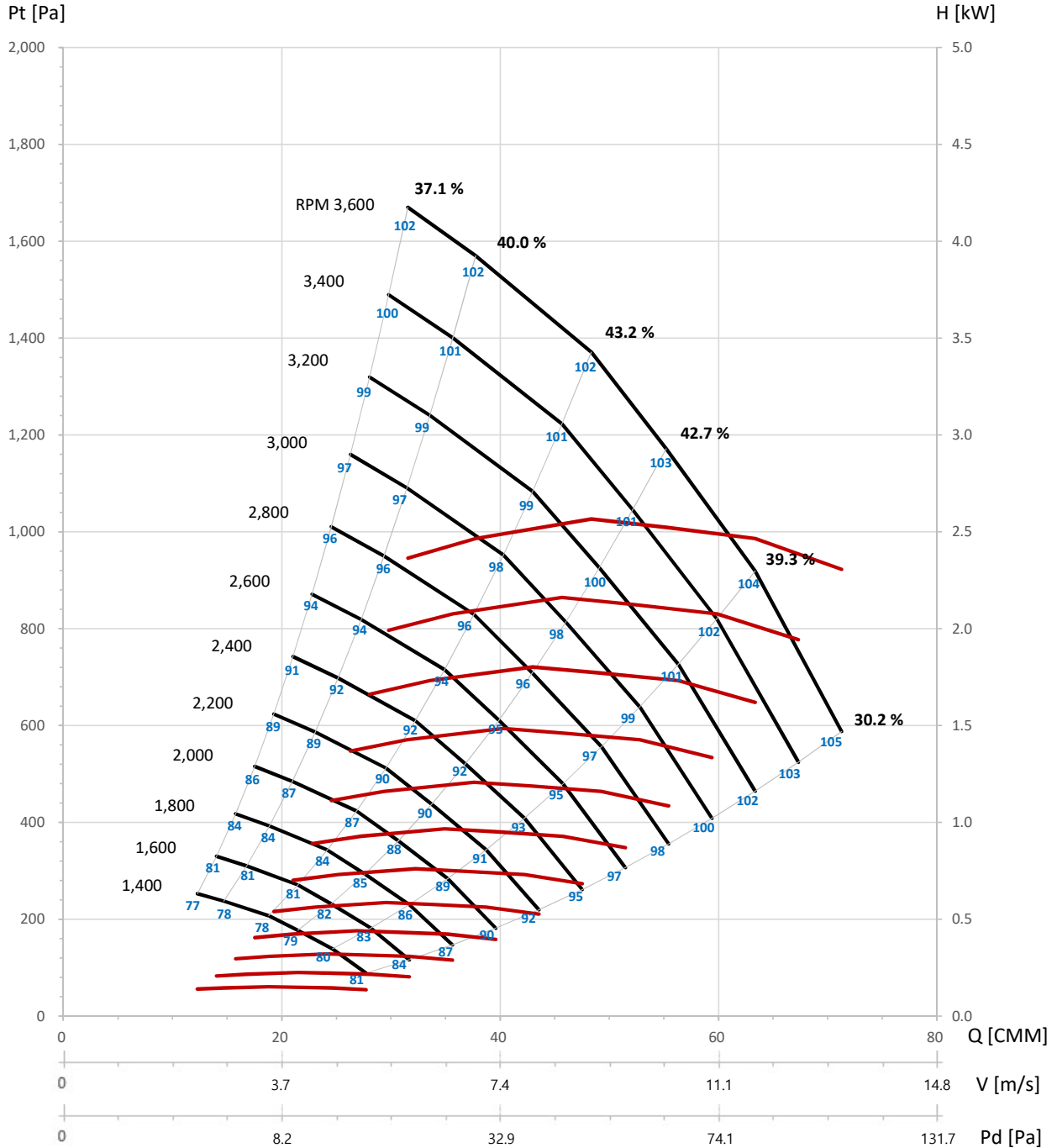
Wheel dia. 324 mm Tip Speed = 0.017 × rpm Outlet Dim. Outlet Area 0.0900 m<sup>2</sup> Class 1 3525 rpm Class 2 4700 rpm Not Applicable

Det.	N	Pt	Ps	Q	H	EtaT	EtaS	LwO	Det.	N	Pt	Ps	Q	H	EtaT	EtaS	LwO
	[r/min]	[Pa]	[Pa]	[m <sup>3</sup> /min]	[kW]	[%]	[%]	[dB(A)]		[r/min]	[Pa]	[Pa]	[m <sup>3</sup> /min]	[kW]	[%]	[%]	[dB(A)]
1	1400	89	74	27.7	0.14	30.2	25.0	81	1	1600	116	96	31.7	0.20	30.2	25.0	84
2		139	127	24.6	0.14	39.3	35.9	80	2		182	166	28.2	0.22	39.3	35.9	83
3		177	168	21.5	0.15	42.7	40.5	79	3		231	219	24.5	0.22	42.7	40.5	82
4		207	200	18.8	0.15	43.2	41.7	78	4		271	262	21.5	0.23	43.2	41.7	81
5		237	233	14.7	0.14	40.0	39.3	78	5		310	304	16.8	0.22	40.0	39.3	81
6		253	249	12.3	0.14	37.1	36.7	77	6		330	326	14.0	0.21	37.1	36.7	81
1	1800	147	122	35.6	0.29	30.2	25.0	87	1	2000	181	150	39.6	0.40	30.2	25.0	90
2		230	210	31.7	0.31	39.3	35.9	86	2		284	259	35.2	0.42	39.3	35.9	89
3		293	278	27.6	0.32	42.7	40.5	85	3		362	343	30.7	0.43	42.7	40.5	88
4		343	331	24.2	0.32	43.2	41.7	84	4		423	409	26.9	0.44	43.2	41.7	87
5		393	385	18.9	0.31	40.0	39.3	84	5		485	476	21.0	0.42	40.0	39.3	87
6		418	412	15.8	0.30	37.1	36.7	84	6		515	509	17.5	0.41	37.1	36.7	86
1	2200	220	182	43.6	0.53	30.2	25.0	92	1	2400	261	216	47.5	0.68	30.2	25.0	95
2		343	313	38.7	0.56	39.3	35.9	91	2		409	373	42.2	0.73	39.3	35.9	93
3		438	415	33.7	0.58	42.7	40.5	90	3		521	494	36.8	0.75	42.7	40.5	92
4		512	495	29.5	0.59	43.2	41.7	90	4		609	589	32.2	0.76	43.2	41.7	92
5		586	576	23.1	0.56	40.0	39.3	89	5		698	685	25.2	0.73	40.0	39.3	92
6		624	616	19.3	0.54	37.1	36.7	89	6		742	733	21.0	0.70	37.1	36.7	91
1	2600	307	254	51.5	0.87	30.2	25.0	97	1	2800	356	294	55.4	1.09	30.2	25.0	98
2		480	438	45.8	0.93	39.3	35.9	95	2		556	508	49.3	1.16	39.3	35.9	97
3		611	579	39.9	0.95	42.7	40.5	95	3		709	672	42.9	1.19	42.7	40.5	96
4		715	691	34.9	0.97	43.2	41.7	94	4		830	801	37.6	1.21	43.2	41.7	96
5		819	804	27.3	0.93	40.0	39.3	94	5		950	933	29.4	1.16	40.0	39.3	96
6		871	861	22.8	0.89	37.1	36.7	94	6		1010	998	24.5	1.11	37.1	36.7	96
1	3000	408	338	59.4	1.33	30.2	25.0	100	1	3200	464	384	63.4	1.62	30.2	25.0	102
2		639	583	52.8	1.43	39.3	35.9	99	2		726	663	56.3	1.73	39.3	35.9	101
3		814	771	46.0	1.46	42.7	40.5	98	3		926	877	49.1	1.77	42.7	40.5	100
4		952	920	40.3	1.49	43.2	41.7	98	4		1083	1047	43.0	1.80	43.2	41.7	99
5		1090	1070	31.5	1.43	40.0	39.3	97	5		1241	1218	33.6	1.73	40.0	39.3	99
6		1160	1146	26.3	1.37	37.1	36.7	97	6		1320	1303	28.0	1.66	37.1	36.7	99
1	3400	524	434	67.3	1.94	30.2	25.0	103	1	3600	588	486	71.3	2.31	30.2	25.0	105
2		820	748	59.8	2.08	39.3	35.9	102	2		919	839	63.4	2.47	39.3	35.9	104
3		1045	991	52.1	2.13	42.7	40.5	101	3		1172	1111	55.2	2.52	42.7	40.5	103
4		1223	1181	45.7	2.16	43.2	41.7	101	4		1371	1325	48.4	2.57	43.2	41.7	102
5		1401	1375	35.7	2.08	40.0	39.3	101	5		1570	1542	37.8	2.47	40.0	39.3	102
6		1490	1472	29.8	1.99	37.1	36.7	100	6		1670	1650	31.6	2.36	37.1	36.7	102

- The A-weighted sound ratings shown have been calculated per AMCA International Standard 301.
- Values shown are for Outlet LwoA sound power levels for installation type A - free inlet, free outlet with partition.
- Performance certified is for installation type A - free inlet, free outlet with partition.
- Performance ratings do not include the effects of appurtenances(accessories).
- Power rating (kW) does not include transmission losses.



Wheel dia. 324 mm	Tip Speed = 0.017 × rpm	Outlet Dim.	Outlet Area 0.0900 m <sup>2</sup>	Class 1 3525 rpm	Class 2 4700 rpm	Not Applicable
-------------------	-------------------------	-------------	-----------------------------------	------------------	------------------	----------------



- The A-weighted sound ratings shown have been calculated per AMCA International Standard 301.  
 - Values shown are for Outlet LwoA sound power levels for installation type A - free inlet, free outlet with partition.  
 - Performance certified is for installation type A - free inlet, free outlet with partition.  
 - Performance ratings do not include the effects of appurtenances(accessories).  
 - Power rating (kW) does not include transmission losses.

Taeil Blower Co., LTD  
TPLB Series

TPLB-355

BACKWARD FAN



Wheel dia. 365 mm Tip Speed = 0.0192 × rpm Outlet Dim. Outlet Area 0.1200 m<sup>2</sup> Class 1 3128 rpm Class 2 4170 rpm Not Applicable

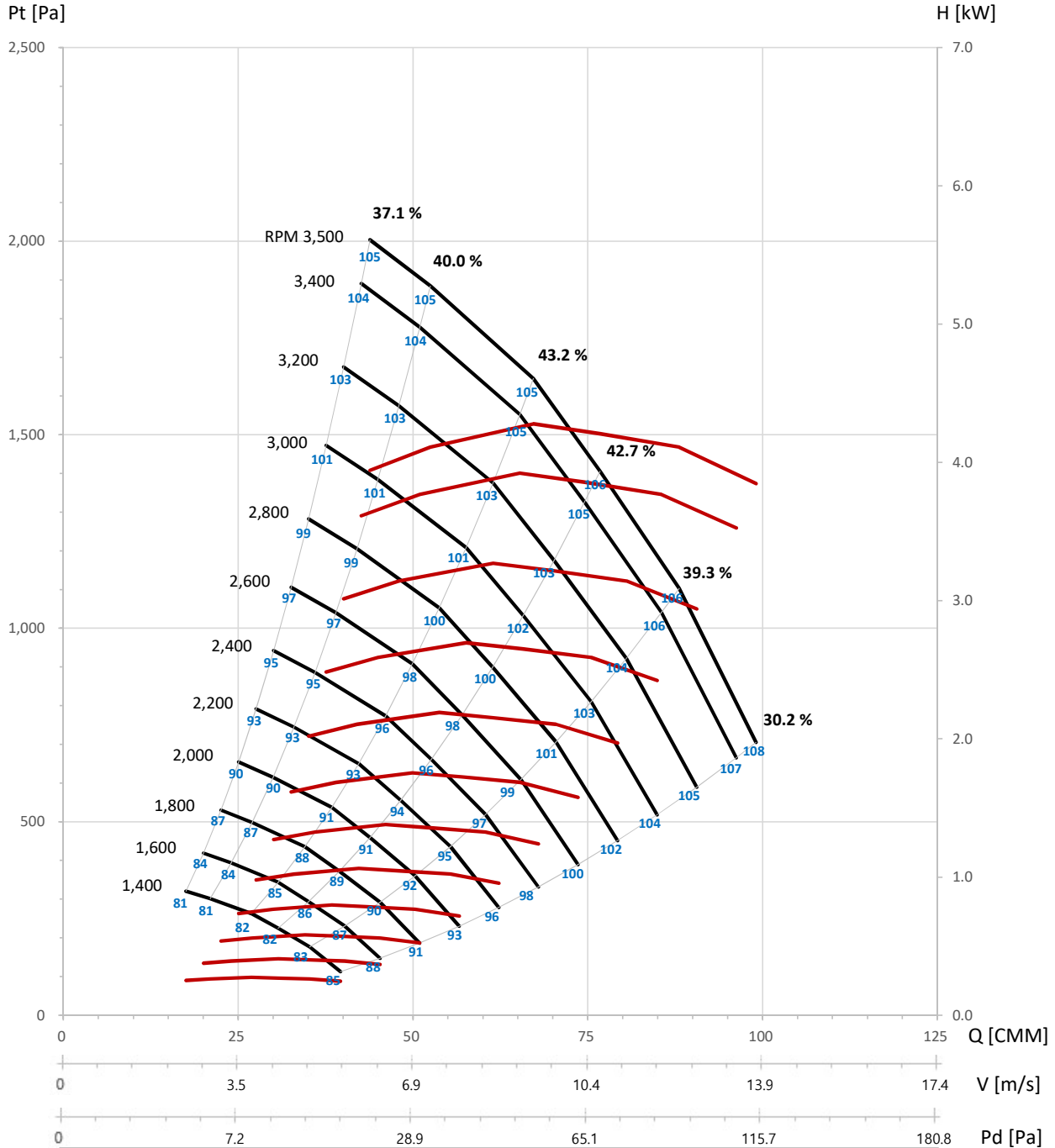
Det.	N	Pt	Ps	Q	H	EtaT	EtaS	LwO	Det.	N	Pt	Ps	Q	H	EtaT	EtaS	LwO
	[r/min]	[Pa]	[Pa]	[m <sup>3</sup> /min]	[kW]	[%]	[%]	[dB(A)]		[r/min]	[Pa]	[Pa]	[m <sup>3</sup> /min]	[kW]	[%]	[%]	[dB(A)]
1	1400	113	93	39.6	0.25	30.2	25.0	85	1	1600	147	122	45.3	0.37	30.2	25.0	88
2		176	161	35.2	0.26	39.3	35.9	83	2		230	210	40.3	0.39	39.3	35.9	87
3		225	213	30.7	0.27	42.7	40.5	82	3		294	278	35.1	0.40	42.7	40.5	86
4		263	254	26.9	0.27	43.2	41.7	82	4		344	332	30.7	0.41	43.2	41.7	85
5		301	296	21.0	0.26	40.0	39.3	81	5		394	386	24.0	0.39	40.0	39.3	84
6		321	317	17.5	0.25	37.1	36.7	81	6		419	414	20.0	0.38	37.1	36.7	84
1	1800	186	154	51.0	0.52	30.2	25.0	91	1	2000	230	190	56.6	0.72	30.2	25.0	93
2		292	266	45.3	0.56	39.3	35.9	90	2		360	329	50.3	0.77	39.3	35.9	92
3		372	352	39.5	0.57	42.7	40.5	89	3		459	435	43.9	0.78	42.7	40.5	91
4		435	420	34.6	0.58	43.2	41.7	88	4		537	519	38.4	0.80	43.2	41.7	91
5		498	489	27.0	0.56	40.0	39.3	87	5		615	604	30.0	0.77	40.0	39.3	90
6		530	523	22.6	0.54	37.1	36.7	87	6		654	646	25.1	0.74	37.1	36.7	90
1	2200	279	230	62.3	0.96	30.2	25.0	96	1	2400	332	274	67.9	1.24	30.2	25.0	98
2		436	398	55.4	1.02	39.3	35.9	95	2		519	473	60.4	1.33	39.3	35.9	97
3		555	526	48.2	1.04	42.7	40.5	94	3		661	626	52.6	1.36	42.7	40.5	96
4		650	628	42.2	1.06	43.2	41.7	93	4		773	747	46.1	1.38	43.2	41.7	96
5		744	731	33.0	1.02	40.0	39.3	93	5		886	869	36.0	1.33	40.0	39.3	95
6		792	782	27.6	0.98	37.1	36.7	93	6		942	931	30.1	1.27	37.1	36.7	95
1	2600	389	322	73.6	1.58	30.2	25.0	100	1	2800	451	373	79.3	1.97	30.2	25.0	102
2		609	555	65.4	1.69	39.3	35.9	99	2		706	644	70.5	2.10	39.3	35.9	101
3		776	735	57.0	1.72	42.7	40.5	98	3		900	853	61.4	2.15	42.7	40.5	100
4		908	877	49.9	1.75	43.2	41.7	98	4		1053	1017	53.8	2.19	43.2	41.7	100
5		1039	1020	39.0	1.69	40.0	39.3	97	5		1206	1183	42.0	2.10	40.0	39.3	99
6		1106	1092	32.6	1.62	37.1	36.7	97	6		1282	1267	35.1	2.02	37.1	36.7	99
1	3000	518	428	84.9	2.42	30.2	25.0	104	1	3200	589	487	90.6	2.94	30.2	25.0	105
2		810	739	75.5	2.59	39.3	35.9	103	2		922	841	80.5	3.14	39.3	35.9	104
3		1033	979	65.8	2.65	42.7	40.5	102	3		1175	1114	70.2	3.21	42.7	40.5	103
4		1208	1167	57.6	2.69	43.2	41.7	101	4		1375	1328	61.4	3.27	43.2	41.7	103
5		1384	1359	45.0	2.59	40.0	39.3	101	5		1575	1546	48.0	3.14	40.0	39.3	103
6		1472	1454	37.6	2.48	37.1	36.7	101	6		1675	1654	40.1	3.01	37.1	36.7	103
1	3400	665	550	96.2	3.53	30.2	25.0	107	1	3500	705	583	99.1	3.85	30.2	25.0	108
2		1041	950	85.6	3.77	39.3	35.9	106	2		1103	1006	88.1	4.11	39.3	35.9	106
3		1326	1257	74.6	3.86	42.7	40.5	105	3		1405	1332	76.7	4.21	42.7	40.5	106
4		1552	1499	65.3	3.92	43.2	41.7	105	4		1645	1589	67.2	4.28	43.2	41.7	105
5		1778	1745	51.0	3.77	40.0	39.3	104	5		1884	1849	52.5	4.11	40.0	39.3	105
6		1891	1868	42.6	3.61	37.1	36.7	104	6		2003	1979	43.9	3.94	37.1	36.7	105

- The A-weighted sound ratings shown have been calculated per AMCA International Standard 301.
- Values shown are for Outlet LwoA sound power levels for installation type A - free inlet, free outlet with partition.
- Performance certified is for installation type A - free inlet, free outlet with partition.
- Performance ratings do not include the effects of appurtenances(accessories).
- Power rating (kW) does not include transmission losses.





Wheel dia. 365 mm	Tip Speed = 0.0192 × rpm	Outlet Dim.	Outlet Area 0.1200 m <sup>2</sup>	Class 1 3128 rpm	Class 2 4170 rpm	Not Applicable
-------------------	--------------------------	-------------	-----------------------------------	------------------	------------------	----------------



- The A-weighted sound ratings shown have been calculated per AMCA International Standard 301.
- Values shown are for Outlet LwoA sound power levels for installation type A - free inlet, free outlet with partition.
- Performance certified is for installation type A - free inlet, free outlet with partition.
- Performance ratings do not include the effects of appurtenances(accessories).
- Power rating (kW) does not include transmission losses.



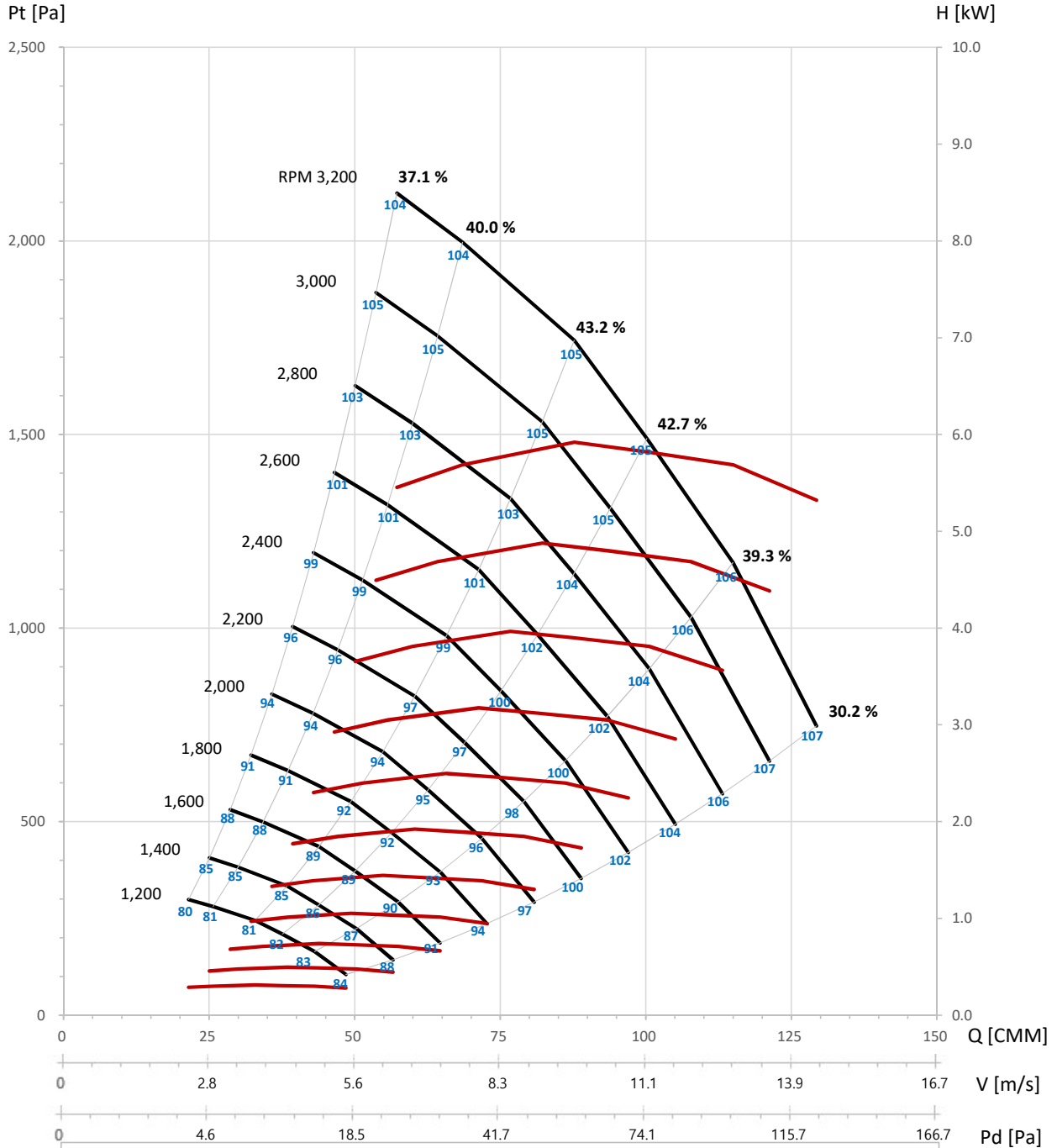
Wheel dia. 411 mm Tip Speed = 0.0216 × rpm Outlet Dim. Outlet Area 0.1500 m<sup>2</sup> Class 1 2776 rpm Class 2 3701 rpm Not Applicable

Det.	N	Pt	Ps	Q	H	EtaT	EtaS	LwO	Det.	N	Pt	Ps	Q	H	EtaT	EtaS	LwO
	[r/min]	[Pa]	[Pa]	[m <sup>3</sup> /min]	[kW]	[%]	[%]	[dB(A)]		[r/min]	[Pa]	[Pa]	[m <sup>3</sup> /min]	[kW]	[%]	[%]	[dB(A)]
1	1200	105	87	48.5	0.28	30.2	25.0	84	1	1400	143	118	56.6	0.45	30.2	25.0	88
2		164	150	43.1	0.30	39.3	35.9	83	2		224	204	50.3	0.48	39.3	35.9	87
3		209	199	37.6	0.31	42.7	40.5	82	3		285	270	43.8	0.49	42.7	40.5	86
4		245	237	32.9	0.31	43.2	41.7	81	4		334	322	38.4	0.50	43.2	41.7	85
5		281	276	25.7	0.30	40.0	39.3	81	5		382	375	30.0	0.48	40.0	39.3	85
6		299	295	21.5	0.29	37.1	36.7	80	6		406	401	25.0	0.46	37.1	36.7	85
1	1600	187	154	64.7	0.67	30.2	25.0	91	1	1800	236	196	72.7	0.95	30.2	25.0	94
2		292	267	57.5	0.71	39.3	35.9	90	2		370	338	64.7	1.01	39.3	35.9	93
3		372	353	50.1	0.73	42.7	40.5	89	3		471	447	56.4	1.04	42.7	40.5	92
4		436	421	43.9	0.74	43.2	41.7	89	4		552	533	49.3	1.05	43.2	41.7	92
5		499	490	34.3	0.71	40.0	39.3	88	5		632	620	38.5	1.01	40.0	39.3	91
6		531	524	28.6	0.68	37.1	36.7	88	6		672	664	32.2	0.97	37.1	36.7	91
1	2000	292	241	80.8	1.30	30.2	25.0	97	1	2200	353	292	88.9	1.73	30.2	25.0	100
2		457	417	71.9	1.39	39.3	35.9	96	2		553	504	79.0	1.85	39.3	35.9	98
3		582	552	62.6	1.42	42.7	40.5	95	3		704	667	68.9	1.89	42.7	40.5	97
4		681	658	54.8	1.45	43.2	41.7	94	4		824	796	60.3	1.92	43.2	41.7	97
5		780	766	42.8	1.39	40.0	39.3	94	5		944	926	47.1	1.85	40.0	39.3	96
6		829	819	35.8	1.33	37.1	36.7	94	6		1004	991	39.4	1.77	37.1	36.7	96
1	2400	420	348	97.0	2.24	30.2	25.0	102	1	2600	493	408	105.1	2.85	30.2	25.0	104
2		658	600	86.2	2.40	39.3	35.9	100	2		772	704	93.4	3.05	39.3	35.9	102
3		838	794	75.1	2.46	42.7	40.5	100	3		983	932	81.4	3.12	42.7	40.5	102
4		981	947	65.8	2.50	43.2	41.7	99	4		1151	1112	71.3	3.18	43.2	41.7	101
5		1123	1102	51.4	2.40	40.0	39.3	99	5		1318	1294	55.7	3.05	40.0	39.3	101
6		1194	1180	42.9	2.30	37.1	36.7	99	6		1402	1385	46.5	2.93	37.1	36.7	101
1	2800	572	473	113.2	3.56	30.2	25.0	106	1	3000	657	543	121.2	4.38	30.2	25.0	107
2		895	817	100.6	3.81	39.3	35.9	104	2		1027	938	107.8	4.69	39.3	35.9	106
3		1141	1081	87.7	3.90	42.7	40.5	104	3		1309	1241	93.9	4.80	42.7	40.5	105
4		1335	1289	76.8	3.97	43.2	41.7	103	4		1532	1480	82.2	4.88	43.2	41.7	105
5		1529	1501	59.9	3.81	40.0	39.3	103	5		1755	1723	64.2	4.69	40.0	39.3	105
6		1626	1606	50.1	3.65	37.1	36.7	103	6		1866	1844	53.7	4.49	37.1	36.7	105
1	3200	747	618	129.3	5.32	30.2	25.0	107									
2		1169	1067	115.0	5.69	39.3	35.9	106									
3		1490	1412	100.2	5.82	42.7	40.5	105									
4		1743	1684	87.7	5.92	43.2	41.7	105									
5		1997	1960	68.5	5.69	40.0	39.3	104									
6		2123	2098	57.2	5.45	37.1	36.7	104									

- The A-weighted sound ratings shown have been calculated per AMCA International Standard 301.
- Values shown are for Outlet LwoA sound power levels for installation type A - free inlet, free outlet with partition.
- Performance certified is for installation type A - free inlet, free outlet with partition.
- Performance ratings do not include the effects of appurtenances(accessories).
- Power rating (kW) does not include transmission losses.



Wheel dia. 411 mm	Tip Speed = 0.0216 × rpm	Outlet Dim.	Outlet Area 0.1500 m <sup>2</sup>	Class 1 2776 rpm	Class 2 3701 rpm	Not Applicable
-------------------	--------------------------	-------------	-----------------------------------	------------------	------------------	----------------



- The A-weighted sound ratings shown have been calculated per AMCA International Standard 301.
- Values shown are for Outlet LwoA sound power levels for installation type A - free inlet, free outlet with partition.
- Performance certified is for installation type A - free inlet, free outlet with partition.
- Performance ratings do not include the effects of appurtenances(accessories).
- Power rating (kW) does not include transmission losses.

Taeil Blower Co., LTD  
TPLB Series

TPLB-450

BACKWARD FAN  
FEG 63



Wheel dia. 462 mm Tip Speed = 0.0242 × rpm Outlet Dim. Outlet Area 0.1900 m<sup>2</sup> Class 1 2484 rpm Class 2 3312 rpm Not Applicable

Det.	N	Pt	Ps	Q	H	EtaT	EtaS	LwO	Det.	N	Pt	Ps	Q	H	EtaT	EtaS	LwO
	[r/min]	[Pa]	[Pa]	[m <sup>3</sup> /min]	[kW]	[%]	[%]	[dB(A)]		[r/min]	[Pa]	[Pa]	[m <sup>3</sup> /min]	[kW]	[%]	[%]	[dB(A)]
1	1000	83	59	68.9	0.23	40.8	29.2	82	1	1200	119	85	82.7	0.40	40.8	29.2	87
2		132	113	61.4	0.25	53.0	45.4	79	2		190	163	73.7	0.44	53.0	45.4	84
3		155	139	57.1	0.26	55.7	49.9	78	3		223	200	68.5	0.46	55.7	49.9	83
4		176	162	54.0	0.27	58.3	53.5	78	4		254	233	64.8	0.47	58.3	53.5	82
5		191	179	50.8	0.28	58.7	54.7	77	5		276	257	61.0	0.48	58.7	54.7	82
6		205	194	48.3	0.28	58.6	55.3	76	6		296	279	58.0	0.49	58.6	55.3	81
7		217	207	45.1	0.28	57.8	55.1	76	7		313	298	54.2	0.49	57.8	55.1	80
8		235	226	40.6	0.28	56.8	54.8	75	8		338	326	48.7	0.48	56.8	54.8	79
1	1400	163	116	96.5	0.64	40.8	29.2	91	1	1600	212	152	110.3	0.96	40.8	29.2	94
2		258	221	86.0	0.70	53.0	45.4	88	2		337	289	98.3	1.04	53.0	45.4	92
3		304	272	79.9	0.73	55.7	49.9	87	3		397	355	91.3	1.08	55.7	49.9	91
4		345	317	75.7	0.75	58.3	53.5	87	4		451	414	86.5	1.11	58.3	53.5	90
5		375	350	71.1	0.76	58.7	54.7	86	5		490	457	81.3	1.13	58.7	54.7	89
6		402	380	67.6	0.77	58.6	55.3	85	6		525	496	77.3	1.15	58.6	55.3	89
7		426	406	63.2	0.77	57.8	55.1	84	7		556	530	72.2	1.16	57.8	55.1	88
8		460	444	56.8	0.77	56.8	54.8	84	8		601	580	64.9	1.14	56.8	54.8	87
1	1800	269	192	124.1	1.36	40.8	29.2	97	1	2000	332	237	137.9	1.87	40.8	29.2	100
2		427	366	110.5	1.48	53.0	45.4	95	2		527	452	122.8	2.03	53.0	45.4	98
3		502	450	102.8	1.54	55.7	49.9	94	3		620	555	114.2	2.12	55.7	49.9	97
4		571	523	97.3	1.58	58.3	53.5	93	4		704	646	108.1	2.17	58.3	53.5	96
5		620	579	91.4	1.61	58.7	54.7	93	5		765	714	101.6	2.21	58.7	54.7	95
6		665	628	86.9	1.64	58.6	55.3	92	6		821	775	96.6	2.25	58.6	55.3	95
7		704	671	81.2	1.65	57.8	55.1	91	7		869	829	90.3	2.26	57.8	55.1	94
8		760	734	73.0	1.63	56.8	54.8	91	8		938	906	81.1	2.23	56.8	54.8	93
1	2200	402	287	151.6	2.48	40.8	29.2	102	1	2400	478	342	165.4	3.22	40.8	29.2	105
2		637	546	135.1	2.71	53.0	45.4	100	2		759	650	147.4	3.52	53.0	45.4	102
3		751	672	125.6	2.82	55.7	49.9	99	3		893	800	137.0	3.66	55.7	49.9	102
4		852	782	118.9	2.89	58.3	53.5	99	4		1014	931	129.7	3.76	58.3	53.5	101
5		926	864	111.8	2.94	58.7	54.7	98	5		1102	1028	121.9	3.81	58.7	54.7	100
6		993	938	106.3	3.00	58.6	55.3	97	6		1182	1116	115.9	3.89	58.6	55.3	99
7		1051	1003	99.3	3.01	57.8	55.1	96	7		1251	1193	108.3	3.90	57.8	55.1	99
8		1136	1096	89.2	2.97	56.8	54.8	96	8		1351	1305	97.4	3.86	56.8	54.8	98
1	2600	561	401	179.2	4.10	40.8	29.2	107	1	2800	650	465	193.0	5.12	40.8	29.2	108
2		890	763	159.7	4.47	53.0	45.4	105	2		1033	885	172.0	5.58	53.0	45.4	106
3		1048	939	148.4	4.65	55.7	49.9	104	3		1216	1089	159.9	5.80	55.7	49.9	106
4		1190	1092	140.5	4.77	58.3	53.5	103	4		1381	1267	151.3	5.96	58.3	53.5	105
5		1294	1207	132.1	4.85	58.7	54.7	102	5		1500	1400	142.2	6.05	58.7	54.7	104
6		1387	1309	125.6	4.95	58.6	55.3	101	6		1609	1519	135.2	6.18	58.6	55.3	103
7		1469	1400	117.3	4.96	57.8	55.1	101	7		1703	1624	126.4	6.20	57.8	55.1	103
8		1586	1531	105.5	4.90	56.8	54.8	100	8		1839	1776	113.6	6.12	56.8	54.8	102
1	3000	747	534	206.8	6.30	40.8	29.2	110	1	3100	797	570	213.7	6.95	40.8	29.2	111
2		1185	1016	184.2	6.87	53.0	45.4	108	2		1266	1085	190.4	7.58	53.0	45.4	109
3		1396	1250	171.3	7.14	55.7	49.9	108	3		1490	1334	177.0	7.88	55.7	49.9	108
4		1585	1454	162.1	7.34	58.3	53.5	107	4		1692	1552	167.5	8.09	58.3	53.5	108
5		1722	1607	152.4	7.45	58.7	54.7	106	5		1839	1716	157.5	8.22	58.7	54.7	107
6		1847	1743	144.9	7.60	58.6	55.3	105	6		1972	1861	149.7	8.39	58.6	55.3	106
7		1955	1864	135.4	7.62	57.8	55.1	105	7		2088	1991	139.9	8.41	57.8	55.1	106
8		2112	2038	121.7	7.53	56.8	54.8	104	8		2255	2177	125.8	8.31	56.8	54.8	105

- The A-weighted sound ratings shown have been calculated per AMCA International Standard 301.
- Values shown are for Outlet LwoA sound power levels for installation type A - free inlet, free outlet with partition.
- Performance certified is for installation type A - free inlet, free outlet with partition.
- Performance ratings do not include the effects of appurtenances(accessories).
- Power rating (kW) does not include transmission losses.

Taeil Blower Co., LTD  
TPLB Series

TPLB-450

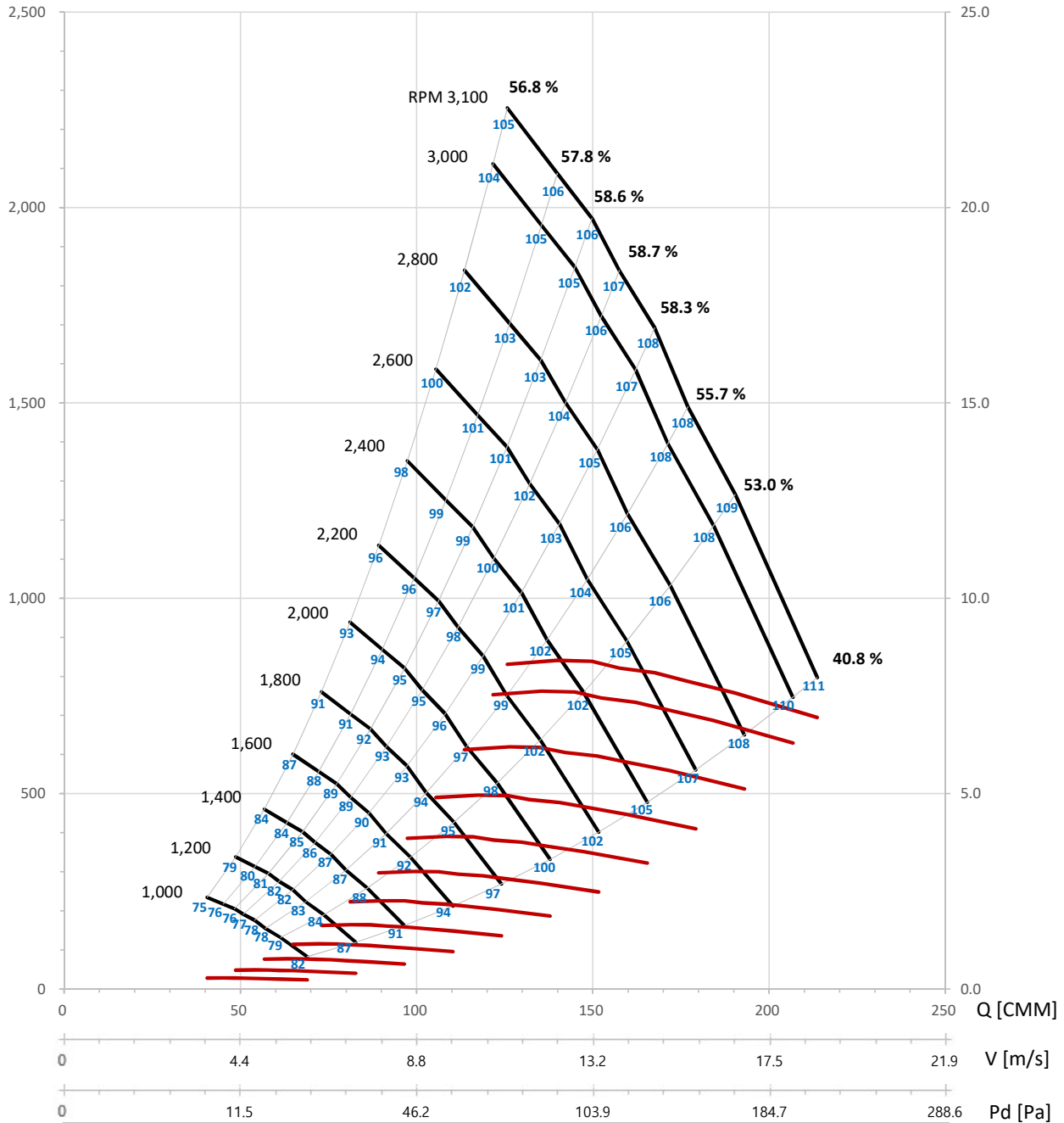
BACKWARD FAN  
FEG 63



Wheel dia. 462 mm Tip Speed = 0.0242 × rpm Outlet Dim. Outlet Area 0.1900 m<sup>2</sup> Class 1 2484 rpm Class 2 3312 rpm Not Applicable

Pt [Pa]

H [kW]



- The A-weighted sound ratings shown have been calculated per AMCA International Standard 301.
- Values shown are for Outlet LwA sound power levels for installation type A - free inlet, free outlet with partition.
- Performance certified is for installation type A - free inlet, free outlet with partition.
- Performance ratings do not include the effects of appurtenances(accessories).
- Power rating (kW) does not include transmission losses.



Wheel dia. 513 mm Tip Speed = 0.0270 × rpm Outlet Dim. Outlet Area 0.2300 m<sup>2</sup> Class 1 2221 rpm Class 2 2961 rpm Not Applicable

Det.	N	Pt	Ps	Q	H	EtaT	EtaS	LwO	Det.	N	Pt	Ps	Q	H	EtaT	EtaS	LwO
	[r/min]	[Pa]	[Pa]	[m <sup>3</sup> /min]	[kW]	[%]	[%]	[dB(A)]		[r/min]	[Pa]	[Pa]	[m <sup>3</sup> /min]	[kW]	[%]	[%]	[dB(A)]
1	900	83	59	84.9	0.29	40.8	29.2	83	1	1000	102	73	94.4	0.39	40.8	29.2	85
2		132	113	75.7	0.31	53.0	45.4	80	2		162	139	84.1	0.43	53.0	45.4	83
3		155	139	70.3	0.33	55.7	49.9	79	3		191	171	78.2	0.45	55.7	49.9	82
4		176	161	66.6	0.33	58.3	53.5	78	4		217	199	74.0	0.46	58.3	53.5	81
5		191	178	62.6	0.34	58.7	54.7	77	5		236	220	69.5	0.47	58.7	54.7	80
6		205	193	59.5	0.35	58.6	55.3	77	6		253	239	66.1	0.48	58.6	55.3	79
7		217	207	55.6	0.35	57.8	55.1	76	7		268	255	61.8	0.48	57.8	55.1	79
8		234	226	50.0	0.34	56.8	54.8	75	8		289	279	55.5	0.47	56.8	54.8	78
1	1200	147	105	113.2	0.68	40.8	29.2	90	1	1400	201	143	132.1	1.08	40.8	29.2	94
2		234	200	100.9	0.74	53.0	45.4	87	2		318	273	117.7	1.18	53.0	45.4	91
3		275	247	93.8	0.77	55.7	49.9	86	3		375	336	109.4	1.22	55.7	49.9	90
4		313	287	88.8	0.79	58.3	53.5	86	4		426	390	103.6	1.26	58.3	53.5	90
5		340	317	83.5	0.80	58.7	54.7	85	5		462	431	97.4	1.28	58.7	54.7	89
6		364	344	79.3	0.82	58.6	55.3	84	6		496	468	92.6	1.30	58.6	55.3	88
7		386	368	74.1	0.82	57.8	55.1	84	7		525	501	86.5	1.31	57.8	55.1	88
8		417	402	66.6	0.81	56.8	54.8	83	8		567	547	77.8	1.29	56.8	54.8	87
1	1600	262	187	151.0	1.61	40.8	29.2	97	1	1800	331	237	169.9	2.30	40.8	29.2	100
2		416	356	134.5	1.76	53.0	45.4	95	2		526	451	151.3	2.50	53.0	45.4	98
3		489	438	125.1	1.83	55.7	49.9	94	3		620	555	140.7	2.60	55.7	49.9	97
4		556	510	118.4	1.88	58.3	53.5	93	4		703	645	133.2	2.67	58.3	53.5	97
5		604	564	111.3	1.91	58.7	54.7	93	5		764	713	125.2	2.71	58.7	54.7	96
6		648	611	105.8	1.95	58.6	55.3	92	6		820	774	119.0	2.77	58.6	55.3	95
7		686	654	98.9	1.95	57.8	55.1	91	7		868	828	111.2	2.78	57.8	55.1	95
8		741	715	88.9	1.93	56.8	54.8	91	8		937	905	100.0	2.75	56.8	54.8	94
1	2000	409	293	188.7	3.15	40.8	29.2	103	1	2200	495	354	207.6	4.19	40.8	29.2	106
2		650	557	168.2	3.43	53.0	45.4	101	2		786	674	185.0	4.57	53.0	45.4	103
3		765	685	156.3	3.57	55.7	49.9	100	3		925	829	172.0	4.75	55.7	49.9	102
4		868	797	148.0	3.67	58.3	53.5	99	4		1051	964	162.8	4.88	58.3	53.5	102
5		944	881	139.1	3.72	58.7	54.7	98	5		1142	1066	153.0	4.96	58.7	54.7	101
6		1012	955	132.2	3.80	58.6	55.3	98	6		1225	1156	145.5	5.06	58.6	55.3	100
7		1071	1022	123.6	3.81	57.8	55.1	97	7		1296	1236	135.9	5.07	57.8	55.1	100
8		1157	1117	111.1	3.77	56.8	54.8	96	8		1400	1352	122.2	5.01	56.8	54.8	99
1	2400	589	421	226.5	5.44	40.8	29.2	108	1	2600	692	495	245.3	6.92	40.8	29.2	110
2		935	802	201.8	5.93	53.0	45.4	106	2		1098	941	218.6	7.55	53.0	45.4	108
3		1101	986	187.6	6.17	55.7	49.9	105	3		1293	1157	203.2	7.84	55.7	49.9	107
4		1251	1147	177.6	6.34	58.3	53.5	104	4		1468	1346	192.4	8.06	58.3	53.5	106
5		1359	1268	166.9	6.44	58.7	54.7	103	5		1595	1488	180.8	8.18	58.7	54.7	105
6		1457	1376	158.7	6.57	58.6	55.3	103	6		1711	1614	171.9	8.35	58.6	55.3	105
7		1543	1471	148.3	6.59	57.8	55.1	102	7		1811	1727	160.6	8.38	57.8	55.1	104
8		1666	1609	133.3	6.51	56.8	54.8	101	8		1956	1888	144.4	8.28	56.8	54.8	103
1	2800	802	574	264.2	8.64	40.8	29.2	112									
2		1273	1091	235.4	9.42	53.0	45.4	110									
3		1499	1342	218.9	9.80	55.7	49.9	109									
4		1702	1562	207.2	10.07	58.3	53.5	108									
5		1850	1726	194.7	10.22	58.7	54.7	107									
6		1984	1872	185.1	10.43	58.6	55.3	107									
7		2100	2002	173.0	10.46	57.8	55.1	106									
8		2268	2189	155.5	10.34	56.8	54.8	105									

- The A-weighted sound ratings shown have been calculated per AMCA International Standard 301.
- Values shown are for Outlet LwoA sound power levels for installation type A - free inlet, free outlet with partition.
- Performance certified is for installation type A - free inlet, free outlet with partition.
- Performance ratings do not include the effects of appurtenances(accessories).
- Power rating (kW) does not include transmission losses.

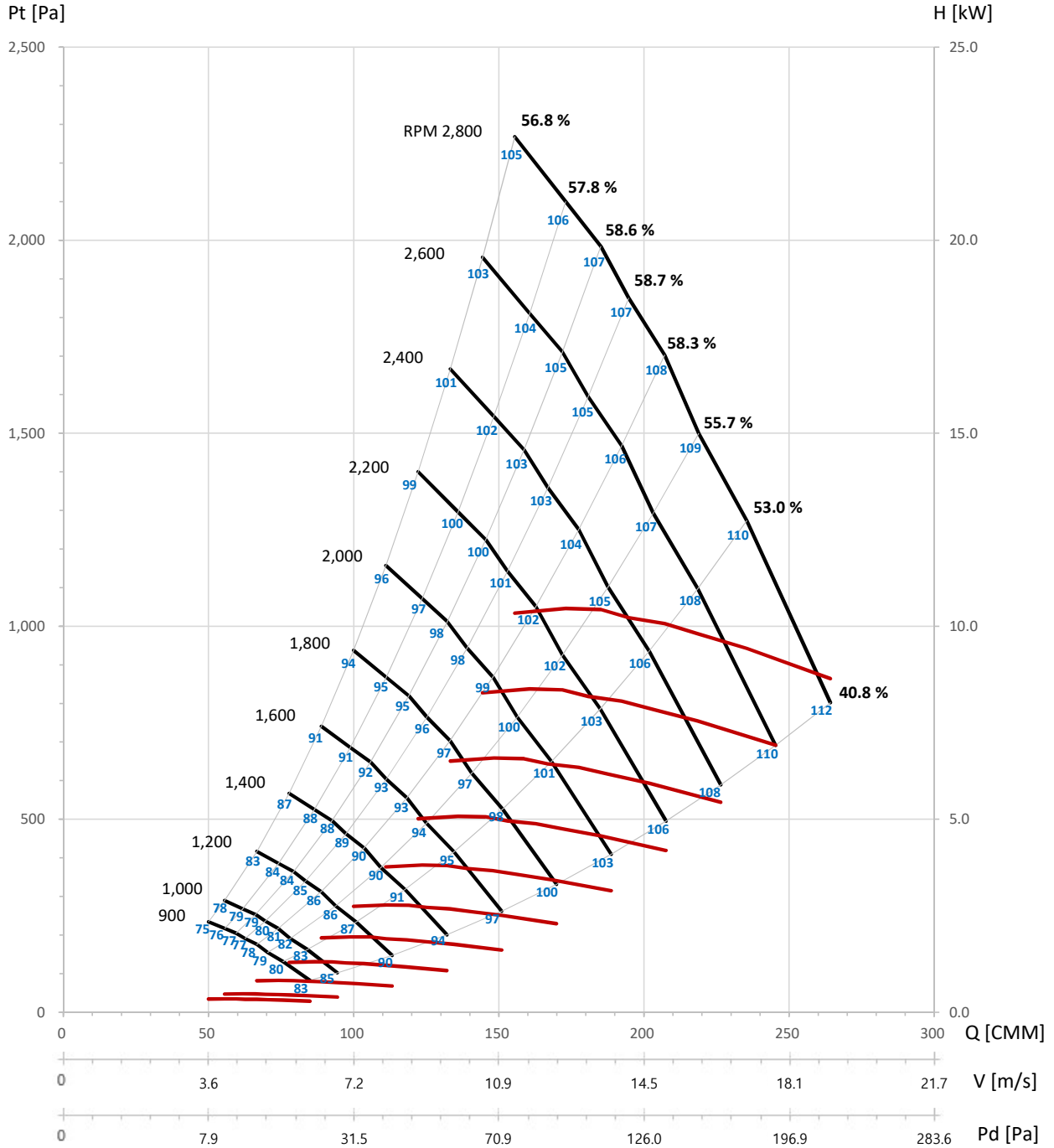
Taeil Blower Co., LTD  
TPLB Series

TPLB-500

BACKWARD FAN  
FEG 63



Wheel dia. 513 mm Tip Speed = 0.0270 × rpm Outlet Dim. Outlet Area 0.2300 m<sup>2</sup> Class 1 2221 rpm Class 2 2961 rpm Not Applicable



- The A-weighted sound ratings shown have been calculated per AMCA International Standard 301.  
 - Values shown are for Outlet LwoA sound power levels for installation type A - free inlet, free outlet with partition.  
 - Performance certified is for installation type A - free inlet, free outlet with partition.  
 - Performance ratings do not include the effects of appurtenances(accessories).  
 - Power rating (kW) does not include transmission losses.





Wheel dia. 574 mm Tip Speed = 0.0303 × rpm Outlet Dim. Outlet Area 0.2900 m<sup>2</sup> Class 1 1983 rpm Class 2 2644 rpm Not Applicable

Det.	N	Pt	Ps	Q	H	EtaT	EtaS	LwO	Det.	N	Pt	Ps	Q	H	EtaT	EtaS	LwO
	[r/min]	[Pa]	[Pa]	[m <sup>3</sup> /min]	[kW]	[%]	[%]	[dB(A)]		[r/min]	[Pa]	[Pa]	[m <sup>3</sup> /min]	[kW]	[%]	[%]	[dB(A)]
1	900	104	74	119.0	0.50	40.8	29.2	86	1	1000	128	92	132.2	0.69	40.8	29.2	89
2	900	165	141	106.0	0.55	53.0	45.4	83	2	1000	203	174	117.8	0.75	53.0	45.4	86
3	900	194	174	98.5	0.57	55.7	49.9	82	3	1000	239	214	109.5	0.78	55.7	49.9	85
4	900	220	202	93.3	0.59	58.3	53.5	82	4	1000	272	249	103.6	0.80	58.3	53.5	84
5	900	239	223	87.7	0.60	58.7	54.7	81	5	1000	295	276	97.4	0.82	58.7	54.7	84
6	900	257	242	83.4	0.61	58.6	55.3	80	6	1000	317	299	92.6	0.83	58.6	55.3	83
7	900	272	259	77.9	0.61	57.8	55.1	80	7	1000	335	320	86.6	0.84	57.8	55.1	82
8	900	293	283	70.0	0.60	56.8	54.8	79	8	1000	362	350	77.8	0.83	56.8	54.8	81
1	1100	155	111	145.4	0.92	40.8	29.2	91	1	1200	184	132	158.6	1.19	40.8	29.2	93
2	1100	246	211	129.6	1.00	53.0	45.4	88	2	1200	293	251	141.3	1.30	53.0	45.4	91
3	1100	290	259	120.4	1.04	55.7	49.9	88	3	1200	345	309	131.4	1.35	55.7	49.9	90
4	1100	329	302	114.0	1.07	58.3	53.5	87	4	1200	391	359	124.4	1.39	58.3	53.5	89
5	1100	357	333	107.2	1.09	58.7	54.7	86	5	1200	425	397	116.9	1.41	58.7	54.7	88
6	1100	383	362	101.9	1.11	58.6	55.3	85	6	1200	456	431	111.2	1.44	58.6	55.3	88
7	1100	406	387	95.2	1.11	57.8	55.1	85	7	1200	483	460	103.9	1.44	57.8	55.1	87
8	1100	438	423	85.6	1.10	56.8	54.8	84	8	1200	522	503	93.4	1.43	56.8	54.8	86
1	1300	216	155	171.8	1.52	40.8	29.2	95	1	1400	251	180	185.1	1.89	40.8	29.2	97
2	1300	344	295	153.1	1.65	53.0	45.4	93	2	1400	398	342	164.9	2.07	53.0	45.4	95
3	1300	405	362	142.3	1.72	55.7	49.9	92	3	1400	469	420	153.3	2.15	55.7	49.9	94
4	1300	459	421	134.7	1.77	58.3	53.5	91	4	1400	533	489	145.1	2.21	58.3	53.5	93
5	1300	499	466	126.7	1.79	58.7	54.7	90	5	1400	579	540	136.4	2.24	58.7	54.7	92
6	1300	535	505	120.4	1.83	58.6	55.3	90	6	1400	621	586	129.7	2.29	58.6	55.3	92
7	1300	567	540	112.5	1.84	57.8	55.1	89	7	1400	657	627	121.2	2.29	57.8	55.1	91
8	1300	612	591	101.1	1.81	56.8	54.8	88	8	1400	710	685	108.9	2.27	56.8	54.8	90
1	1500	288	206	198.3	2.33	40.8	29.2	99	1	1600	328	234	211.5	2.83	40.8	29.2	101
2	1500	457	392	176.7	2.54	53.0	45.4	97	2	1600	520	446	188.4	3.08	53.0	45.4	98
3	1500	539	482	164.2	2.64	55.7	49.9	96	3	1600	613	549	175.2	3.21	55.7	49.9	97
4	1500	612	561	155.5	2.71	58.3	53.5	95	4	1600	696	638	165.8	3.29	58.3	53.5	97
5	1500	665	620	146.1	2.76	58.7	54.7	94	5	1600	756	706	155.9	3.34	58.7	54.7	96
6	1500	713	673	138.9	2.81	58.6	55.3	94	6	1600	811	765	148.2	3.41	58.6	55.3	95
7	1500	754	719	129.8	2.82	57.8	55.1	93	7	1600	858	819	138.5	3.42	57.8	55.1	95
8	1500	815	787	116.7	2.79	56.8	54.8	92	8	1600	927	895	124.5	3.38	56.8	54.8	94
1	1700	370	265	224.7	3.39	40.8	29.2	102	1	1800	415	297	237.9	4.03	40.8	29.2	104
2	1700	588	504	200.2	3.70	53.0	45.4	100	2	1800	659	565	212.0	4.39	53.0	45.4	102
3	1700	692	619	186.1	3.85	55.7	49.9	99	3	1800	776	694	197.1	4.56	55.7	49.9	101
4	1700	786	721	176.2	3.95	58.3	53.5	98	4	1800	881	808	186.6	4.69	58.3	53.5	100
5	1700	854	797	165.6	4.01	58.7	54.7	98	5	1800	957	893	175.4	4.76	58.7	54.7	99
6	1700	916	864	157.5	4.10	58.6	55.3	97	6	1800	1026	969	166.7	4.86	58.6	55.3	99
7	1700	969	924	147.1	4.11	57.8	55.1	96	7	1800	1086	1036	155.8	4.87	57.8	55.1	98
8	1700	1047	1010	132.3	4.06	56.8	54.8	96	8	1800	1173	1133	140.0	4.82	56.8	54.8	97
1	1900	462	331	251.2	4.74	40.8	29.2	105	1	2000	512	366	264.4	5.52	40.8	29.2	107
2	1900	734	629	223.8	5.16	53.0	45.4	103	2	2000	813	697	235.6	6.02	53.0	45.4	104
3	1900	864	774	208.0	5.37	55.7	49.9	102	3	2000	958	857	219.0	6.26	55.7	49.9	103
4	1900	981	900	196.9	5.52	58.3	53.5	101	4	2000	1087	997	207.3	6.43	58.3	53.5	103
5	1900	1066	995	185.1	5.60	58.7	54.7	101	5	2000	1182	1102	194.9	6.53	58.7	54.7	102
6	1900	1144	1079	176.0	5.72	58.6	55.3	100	6	2000	1267	1196	185.3	6.67	58.6	55.3	101
7	1900	1211	1154	164.5	5.73	57.8	55.1	99	7	2000	1341	1279	173.1	6.69	57.8	55.1	101
8	1900	1307	1262	147.8	5.66	56.8	54.8	99	8	2000	1449	1398	155.6	6.61	56.8	54.8	100
1	2100	565	404	277.6	6.39	40.8	29.2	108	1	2200	620	443	290.8	7.35	40.8	29.2	109
2	2100	897	769	247.3	6.97	53.0	45.4	106	2	2200	984	844	259.1	8.02	53.0	45.4	107
3	2100	1056	945	229.9	7.25	55.7	49.9	105	3	2200	1159	1037	240.9	8.33	55.7	49.9	106
4	2100	1199	1100	217.6	7.45	58.3	53.5	104	4	2200	1316	1207	228.0	8.56	58.3	53.5	105
5	2100	1303	1215	204.6	7.56	58.7	54.7	103	5	2200	1430	1334	214.3	8.69	58.7	54.7	104
6	2100	1397	1319	194.5	7.72	58.6	55.3	102	6	2200	1533	1447	203.8	8.88	58.6	55.3	104
7	2100	1479	1410	181.8	7.74	57.8	55.1	102	7	2200	1623	1548	190.4	8.90	57.8	55.1	103
8	2100	1597	1542	163.4	7.65	56.8	54.8	101	8	2200	1753	1692	171.2	8.79	56.8	54.8	102
1	2300	677	485	304.0	8.40	40.8	29.2	110									
2	2300	1075	922	270.9	9.16	53.0	45.4	108									
3	2300	1266	1134	251.8	9.52	55.7	49.9	107									
4	2300	1438	1319	238.4	9.79	58.3	53.5	106									
5	2300	1563	1458	224.1	9.93	58.7	54.7	106									
6	2300	1676	1582	213.0	10.14	58.6	55.3	105									
7	2300	1774	1692	199.1	10.17	57.8	55.1	104									
8	2300	1916	1849	178.9	10.05	56.8	54.8	103									

- The A-weighted sound ratings shown have been calculated per AMCA International Standard 301.
- Values shown are for Outlet LwoA sound power levels for installation type A - free inlet, free outlet with partition.
- Performance certified is for installation type A - free inlet, free outlet with partition.
- Performance ratings do not include the effects of appurtenances(accessories).
- Power rating (kW) does not include transmission losses.



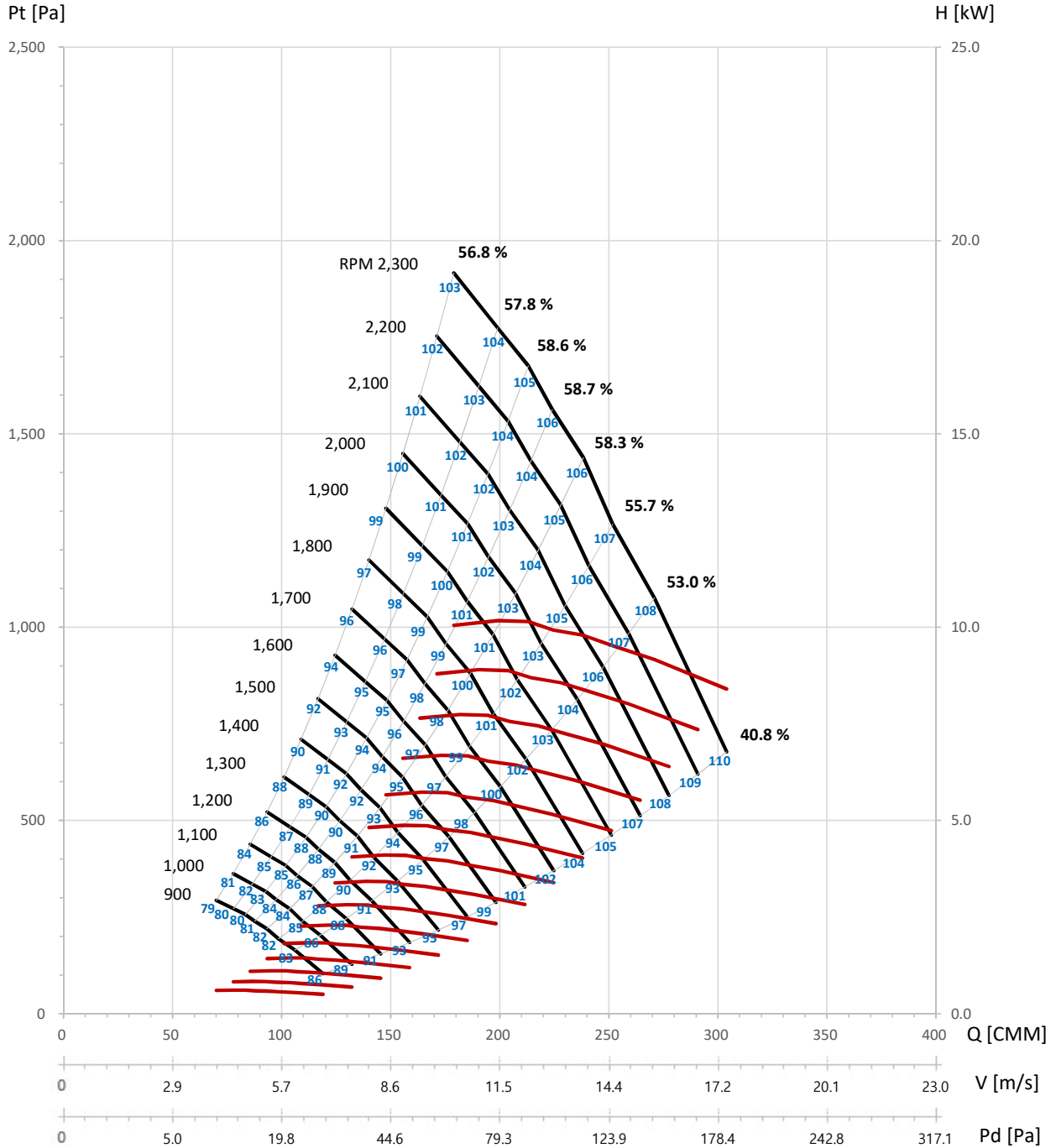
Taeil Blower Co., LTD  
TPLB Series

TPLB-560

BACKWARD FAN  
FEG 63



Wheel dia. 574 mm Tip Speed = 0.0303 × rpm Outlet Dim. Outlet Area 0.2900 m<sup>2</sup> Class 1 1983 rpm Class 2 2644 rpm Not Applicable



- The A-weighted sound ratings shown have been calculated per AMCA International Standard 301.  
 - Values shown are for Outlet LwoA sound power levels for installation type A - free inlet, free outlet with partition.  
 - Performance certified is for installation type A - free inlet, free outlet with partition.  
 - Performance ratings do not include the effects of appurtenances(accessories).  
 - Power rating (kW) does not include transmission losses.

Taeil Blower Co., LTD  
TPLB Series

TPLB-630

BACKWARD FAN  
FEG 60



Wheel dia. 646 mm | Tip Speed = 0.0340 × rpm | Outlet Dim. | Outlet Area 0.3600 m<sup>2</sup> | Class 1 1763 rpm | Class 2 2350 rpm | Not Applicable

Det.	N	Pt	Ps	Q	H	EtaT	EtaS	LwO	Det.	N	Pt	Ps	Q	H	EtaT	EtaS	LwO
	[r/min]	[Pa]	[Pa]	[m <sup>3</sup> /min]	[kW]	[%]	[%]	[dB(A)]		[r/min]	[Pa]	[Pa]	[m <sup>3</sup> /min]	[kW]	[%]	[%]	[dB(A)]
1	900	131	94	169.6	0.91	40.8	29.2	90	1	1000	162	116	188.4	1.25	40.8	29.2	92
2		209	179	151.1	0.99	53.0	45.4	87	2		258	221	167.9	1.36	53.0	45.4	90
3		246	220	140.5	1.03	55.7	49.9	86	3		303	271	156.1	1.41	55.7	49.9	89
4		279	256	133.0	1.06	58.3	53.5	85	4		344	316	147.7	1.45	58.3	53.5	88
5		303	283	125.0	1.08	58.7	54.7	84	5		374	349	138.9	1.47	58.7	54.7	87
6		325	307	118.8	1.10	58.6	55.3	84	6		401	379	132.0	1.51	58.6	55.3	86
7		344	328	111.0	1.10	57.8	55.1	83	7		425	405	123.4	1.51	57.8	55.1	86
8		372	359	99.8	1.09	56.8	54.8	82	8		459	443	110.9	1.49	56.8	54.8	85
1	1100	196	140	207.3	1.66	40.8	29.2	95	1	1200	234	167	226.1	2.15	40.8	29.2	97
2		312	267	184.7	1.81	53.0	45.4	92	2		371	318	201.5	2.35	53.0	45.4	94
3		367	328	171.7	1.88	55.7	49.9	91	3		437	391	187.3	2.44	55.7	49.9	93
4		417	382	162.5	1.93	58.3	53.5	90	4		496	455	177.3	2.51	58.3	53.5	93
5		453	422	152.8	1.96	58.7	54.7	90	5		539	503	166.7	2.55	58.7	54.7	92
6		486	458	145.2	2.00	58.6	55.3	89	6		578	545	158.4	2.60	58.6	55.3	91
7		514	490	135.7	2.01	57.8	55.1	88	7		612	583	148.1	2.61	57.8	55.1	91
8		555	536	122.0	1.99	56.8	54.8	87	8		661	638	133.1	2.58	56.8	54.8	90
1	1300	274	196	245.0	2.74	40.8	29.2	99	1	1400	318	227	263.8	3.42	40.8	29.2	101
2		435	373	218.3	2.99	53.0	45.4	96	2		505	433	235.0	3.73	53.0	45.4	98
3		512	459	202.9	3.11	55.7	49.9	96	3		594	532	218.5	3.88	55.7	49.9	97
4		582	534	192.1	3.19	58.3	53.5	95	4		675	619	206.8	3.99	58.3	53.5	97
5		632	590	180.5	3.24	58.7	54.7	94	5		733	684	194.4	4.05	58.7	54.7	96
6		678	640	171.6	3.31	58.6	55.3	93	6		786	742	184.9	4.13	58.6	55.3	95
7		718	684	160.4	3.32	57.8	55.1	93	7		832	794	172.7	4.14	57.8	55.1	95
8		775	748	144.2	3.28	56.8	54.8	92	8		899	868	155.3	4.09	56.8	54.8	94
1	1500	365	261	282.6	4.21	40.8	29.2	103	1	1600	415	297	301.5	5.11	40.8	29.2	104
2		579	497	251.8	4.59	53.0	45.4	100	2		659	565	268.6	5.57	53.0	45.4	102
3		682	611	234.1	4.77	55.7	49.9	99	3		776	695	249.7	5.79	55.7	49.9	101
4		775	711	221.6	4.90	58.3	53.5	99	4		881	809	236.4	5.95	58.3	53.5	100
5		842	785	208.3	4.98	58.7	54.7	98	5		958	894	222.2	6.04	58.7	54.7	100
6		903	852	198.1	5.08	58.6	55.3	97	6		1027	970	211.3	6.16	58.6	55.3	99
7		956	911	185.1	5.09	57.8	55.1	97	7		1087	1037	197.4	6.18	57.8	55.1	98
8		1032	996	166.3	5.03	56.8	54.8	96	8		1174	1134	177.4	6.11	56.8	54.8	98
1	1700	469	335	320.3	6.13	40.8	29.2	106	1	1800	526	376	339.2	7.27	40.8	29.2	107
2		744	638	285.4	6.68	53.0	45.4	104	2		834	715	302.2	7.93	53.0	45.4	105
3		876	785	265.3	6.94	55.7	49.9	103	3		982	880	280.9	8.24	55.7	49.9	104
4		995	913	251.2	7.13	58.3	53.5	102	4		1115	1023	265.9	8.47	58.3	53.5	104
5		1081	1009	236.1	7.24	58.7	54.7	101	5		1212	1131	250.0	8.60	58.7	54.7	103
6		1160	1094	224.5	7.39	58.6	55.3	101	6		1300	1227	237.7	8.78	58.6	55.3	102
7		1227	1170	209.7	7.41	57.8	55.1	100	7		1376	1312	222.1	8.80	57.8	55.1	102
8		1326	1280	188.5	7.33	56.8	54.8	99	8		1486	1435	199.6	8.70	56.8	54.8	101
1	1900	586	419	358.0	8.55	40.8	29.2	109	1	2000	649	464	376.9	9.97	40.8	29.2	110
2		930	797	319.0	9.32	53.0	45.4	106	2		1030	883	335.8	10.88	53.0	45.4	108
3		1095	980	296.5	9.69	55.7	49.9	106	3		1213	1086	312.2	11.31	55.7	49.9	107
4		1243	1140	280.7	9.96	58.3	53.5	105	4		1377	1263	295.5	11.62	58.3	53.5	106
5		1351	1260	263.9	10.11	58.7	54.7	104	5		1497	1396	277.8	11.79	58.7	54.7	105
6		1449	1367	250.9	10.32	58.6	55.3	104	6		1605	1515	264.1	12.04	58.6	55.3	105
7		1533	1462	234.4	10.35	57.8	55.1	103	7		1699	1620	246.8	12.07	57.8	55.1	104
8		1656	1599	210.7	10.23	56.8	54.8	102	8		1835	1771	221.8	11.93	56.8	54.8	103
1	2100	715	512	395.7	11.55	40.8	29.2	111	1	2200	785	561	414.5	13.27	40.8	29.2	113
2		1136	974	352.6	12.59	53.0	45.4	109	2		1246	1068	369.4	14.47	53.0	45.4	110
3		1337	1197	327.8	13.09	55.7	49.9	108	3		1468	1314	343.4	15.05	55.7	49.9	109
4		1518	1393	310.2	13.45	58.3	53.5	108	4		1666	1529	325.0	15.46	58.3	53.5	109
5		1650	1540	291.6	13.65	58.7	54.7	107	5		1811	1690	305.5	15.70	58.7	54.7	108
6		1770	1670	277.3	13.94	58.6	55.3	106	6		1942	1833	290.5	16.03	58.6	55.3	107
7		1873	1786	259.1	13.97	57.8	55.1	105	7		2056	1960	271.4	16.07	57.8	55.1	107
8		2023	1953	232.9	13.81	56.8	54.8	105	8		2220	2143	244.0	15.88	56.8	54.8	106

- The A-weighted sound ratings shown have been calculated per AMCA International Standard 301.
- Values shown are for Outlet LwoA sound power levels for installation type A - free inlet, free outlet with partition.
- Performance certified is for installation type A - free inlet, free outlet with partition.
- Performance ratings do not include the effects of appurtenances(accessories).
- Power rating (kW) does not include transmission losses.

Taeil Blower Co., LTD  
TPLB Series

TPLB-630

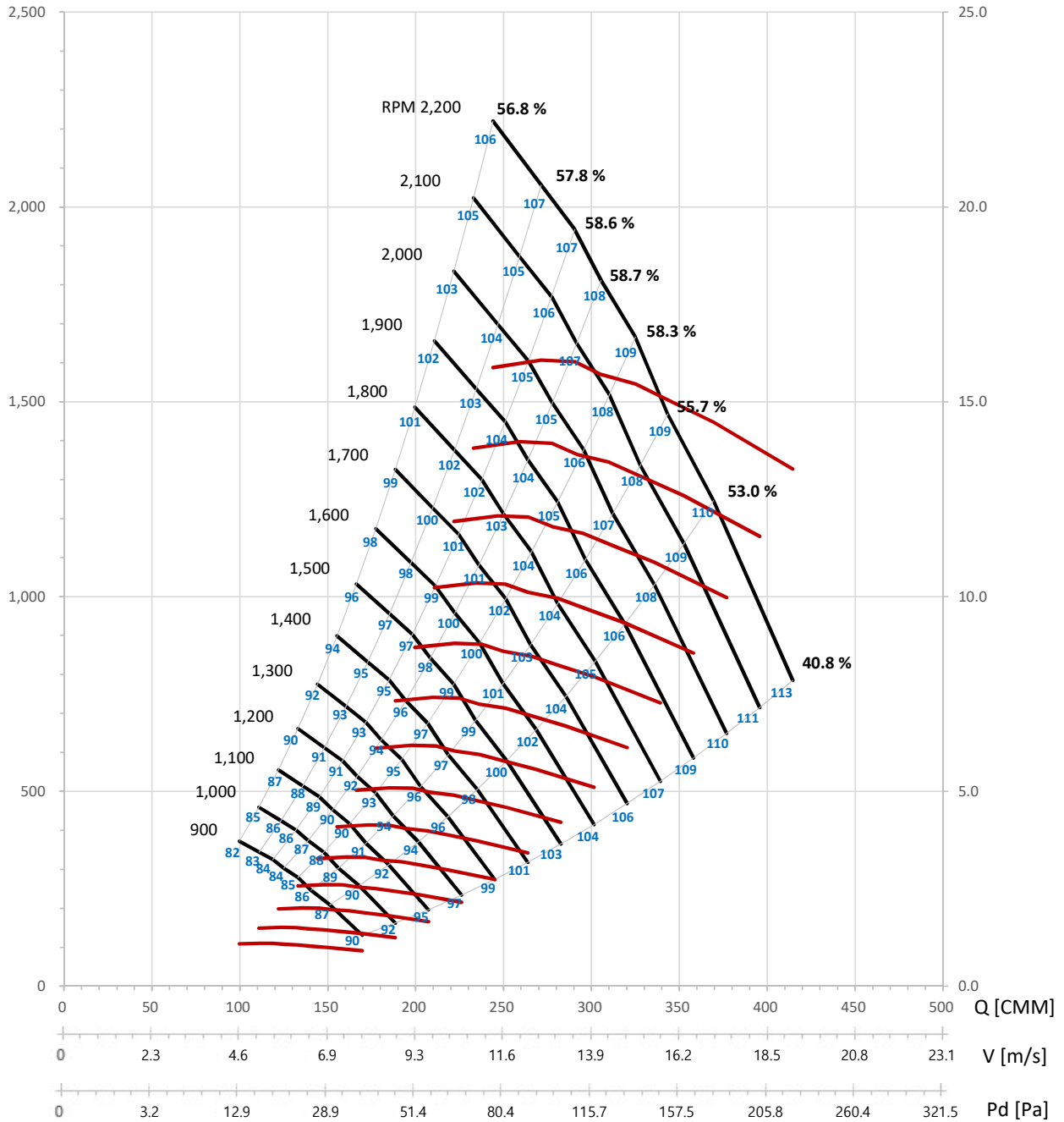
BACKWARD FAN  
FEG 60



Wheel dia. 646 mm Tip Speed = 0.0340 × rpm Outlet Dim. Outlet Area 0.3600 m<sup>2</sup> Class 1 1763 rpm Class 2 2350 rpm Not Applicable

Pt [Pa]

H [kW]



- The A-weighted sound ratings shown have been calculated per AMCA International Standard 301.
- Values shown are for Outlet LwoA sound power levels for installation type A - free inlet, free outlet with partition.
- Performance certified is for installation type A - free inlet, free outlet with partition.
- Performance ratings do not include the effects of appurtenances(accessories).
- Power rating (kW) does not include transmission losses.



Wheel dia. 728 mm Tip Speed = 0.0384 × rpm Outlet Dim. Outlet Area 0.4600 m<sup>2</sup> Class 1 1564 rpm Class 2 2085 rpm Not Applicable

Det.	N	Pt	Ps	Q	H	EtaT	EtaS	LwO	Det.	N	Pt	Ps	Q	H	EtaT	EtaS	LwO
	[r/min]	[Pa]	[Pa]	[m <sup>3</sup> /min]	[kW]	[%]	[%]	[dB(A)]		[r/min]	[Pa]	[Pa]	[m <sup>3</sup> /min]	[kW]	[%]	[%]	[dB(A)]
1	700	112	83	190.9	0.73	49.1	36.3	87	1	800	147	109	218.2	1.09	49.1	36.3	90
2		173	149	170.7	0.81	60.9	52.7	84	2		226	195	195.1	1.20	60.9	52.7	88
3		192	171	162.8	0.83	63.1	56.2	83	3		251	224	186.1	1.23	63.1	56.2	87
4		207	187	157.7	0.85	63.7	57.6	82	4		270	245	180.2	1.27	63.7	57.6	86
5		234	217	145.2	0.87	64.6	60.0	82	5		306	284	166.0	1.31	64.6	60.0	85
6		266	252	129.9	0.90	64.2	61.0	80	6		347	330	148.5	1.34	64.2	61.0	84
7		286	275	117.6	0.89	62.8	60.4	79	7		373	359	134.4	1.33	62.8	60.4	83
8		297	287	110.1	0.88	61.6	59.6	79	8		388	375	125.8	1.32	61.6	59.6	82
1	900	186	138	245.5	1.55	49.1	36.3	93	1	1000	229	170	272.8	2.12	49.1	36.3	95
2		286	247	219.5	1.71	60.9	52.7	91	2		353	305	243.9	2.35	60.9	52.7	93
3		318	283	209.3	1.76	63.1	56.2	90	3		393	349	232.6	2.41	63.1	56.2	92
4		342	309	202.7	1.81	63.7	57.6	89	4		423	382	225.3	2.49	63.7	57.6	91
5		387	359	186.7	1.86	64.6	60.0	88	5		478	443	207.5	2.55	64.6	60.0	91
6		440	417	167.0	1.90	64.2	61.0	87	6		543	515	185.6	2.61	64.2	61.0	90
7		472	454	151.3	1.89	62.8	60.4	86	7		583	560	168.1	2.59	62.8	60.4	89
8		490	474	141.5	1.87	61.6	59.6	85	8		605	586	157.3	2.57	61.6	59.6	88
1	1100	277	205	300.0	2.83	49.1	36.3	98	1	1200	330	244	327.3	3.67	49.1	36.3	100
2		427	369	268.3	3.13	60.9	52.7	96	2		508	439	292.7	4.06	60.9	52.7	98
3		475	423	255.8	3.21	63.1	56.2	95	3		566	503	279.1	4.16	63.1	56.2	97
4		511	462	247.8	3.31	63.7	57.6	94	4		609	550	270.3	4.30	63.7	57.6	96
5		578	536	228.2	3.39	64.6	60.0	94	5		688	638	249.0	4.41	64.6	60.0	96
6		657	623	204.2	3.47	64.2	61.0	92	6		782	742	222.7	4.51	64.2	61.0	94
7		705	678	184.9	3.45	62.8	60.4	91	7		839	807	201.7	4.48	62.8	60.4	93
8		733	709	173.0	3.42	61.6	59.6	91	8		872	843	188.7	4.44	61.6	59.6	93
1	1300	388	287	354.6	4.67	49.1	36.3	102	1	1400	449	333	381.9	5.83	49.1	36.3	104
2		596	515	317.1	5.17	60.9	52.7	100	2		691	598	341.5	6.45	60.9	52.7	102
3		664	591	302.4	5.29	63.1	56.2	99	3		770	685	325.6	6.61	63.1	56.2	101
4		714	646	292.8	5.46	63.7	57.6	98	4		828	749	315.4	6.82	63.7	57.6	100
5		807	749	269.7	5.60	64.6	60.0	98	5		936	869	290.4	7.00	64.6	60.0	100
6		917	871	241.3	5.73	64.2	61.0	96	6		1064	1010	259.9	7.16	64.2	61.0	98
7		985	947	218.5	5.70	62.8	60.4	95	7		1142	1098	235.3	7.12	62.8	60.4	97
8		1023	990	204.4	5.65	61.6	59.6	95	8		1187	1148	220.2	7.06	61.6	59.6	97
1	1500	516	382	409.2	7.17	49.1	36.3	106	1	1600	587	435	436.4	8.70	49.1	36.3	107
2		793	686	365.9	7.94	60.9	52.7	104	2		903	781	390.3	9.63	60.9	52.7	105
3		884	786	348.9	8.13	63.1	56.2	103	3		1005	895	372.1	9.87	63.1	56.2	104
4		951	860	337.9	8.39	63.7	57.6	102	4		1082	978	360.4	10.19	63.7	57.6	103
5		1075	998	311.2	8.61	64.6	60.0	102	5		1223	1135	331.9	10.45	64.6	60.0	103
6		1221	1159	278.4	8.81	64.2	61.0	100	6		1390	1319	297.0	10.69	64.2	61.0	102
7		1311	1261	252.1	8.76	62.8	60.4	99	7		1492	1434	268.9	10.63	62.8	60.4	101
8		1362	1318	235.9	8.68	61.6	59.6	99	8		1550	1500	251.6	10.53	61.6	59.6	100
1	1700	663	491	463.7	10.43	49.1	36.3	109	1	1800	743	550	491.0	12.39	49.1	36.3	110
2		1019	882	414.6	11.55	60.9	52.7	107	2		1143	988	439.0	13.71	60.9	52.7	108
3		1135	1010	395.4	11.83	63.1	56.2	106	3		1272	1132	418.7	14.05	63.1	56.2	107
4		1221	1104	383.0	12.22	63.7	57.6	105	4		1369	1238	405.5	14.50	63.7	57.6	106
5		1380	1281	352.7	12.53	64.6	60.0	105	5		1548	1436	373.4	14.87	64.6	60.0	106
6		1569	1489	315.5	12.82	64.2	61.0	103	6		1759	1669	334.1	15.22	64.2	61.0	105
7		1684	1619	285.7	12.75	62.8	60.4	102	7		1888	1815	302.5	15.13	62.8	60.4	104
8		1750	1693	267.4	12.63	61.6	59.6	102	8		1962	1898	283.1	15.00	61.6	59.6	103
1	1900	828	613	518.3	14.57	49.1	36.3	112									
2		1273	1101	463.4	16.13	60.9	52.7	110									
3		1418	1262	441.9	16.52	63.1	56.2	109									
4		1526	1379	428.0	17.06	63.7	57.6	108									
5		1724	1600	394.2	17.49	64.6	60.0	108									
6		1960	1860	352.7	17.90	64.2	61.0	106									
7		2104	2023	319.3	17.79	62.8	60.4	105									
8		2186	2115	298.8	17.64	61.6	59.6	105									

- The A-weighted sound ratings shown have been calculated per AMCA International Standard 301.
- Values shown are for Outlet LwoA sound power levels for installation type A - free inlet, free outlet with partition.
- Performance certified is for installation type A - free inlet, free outlet with partition.
- Performance ratings do not include the effects of appurtenances(accessories).
- Power rating (kW) does not include transmission losses.

Taeil Blower Co., LTD  
TPLB Series

TPLB-710

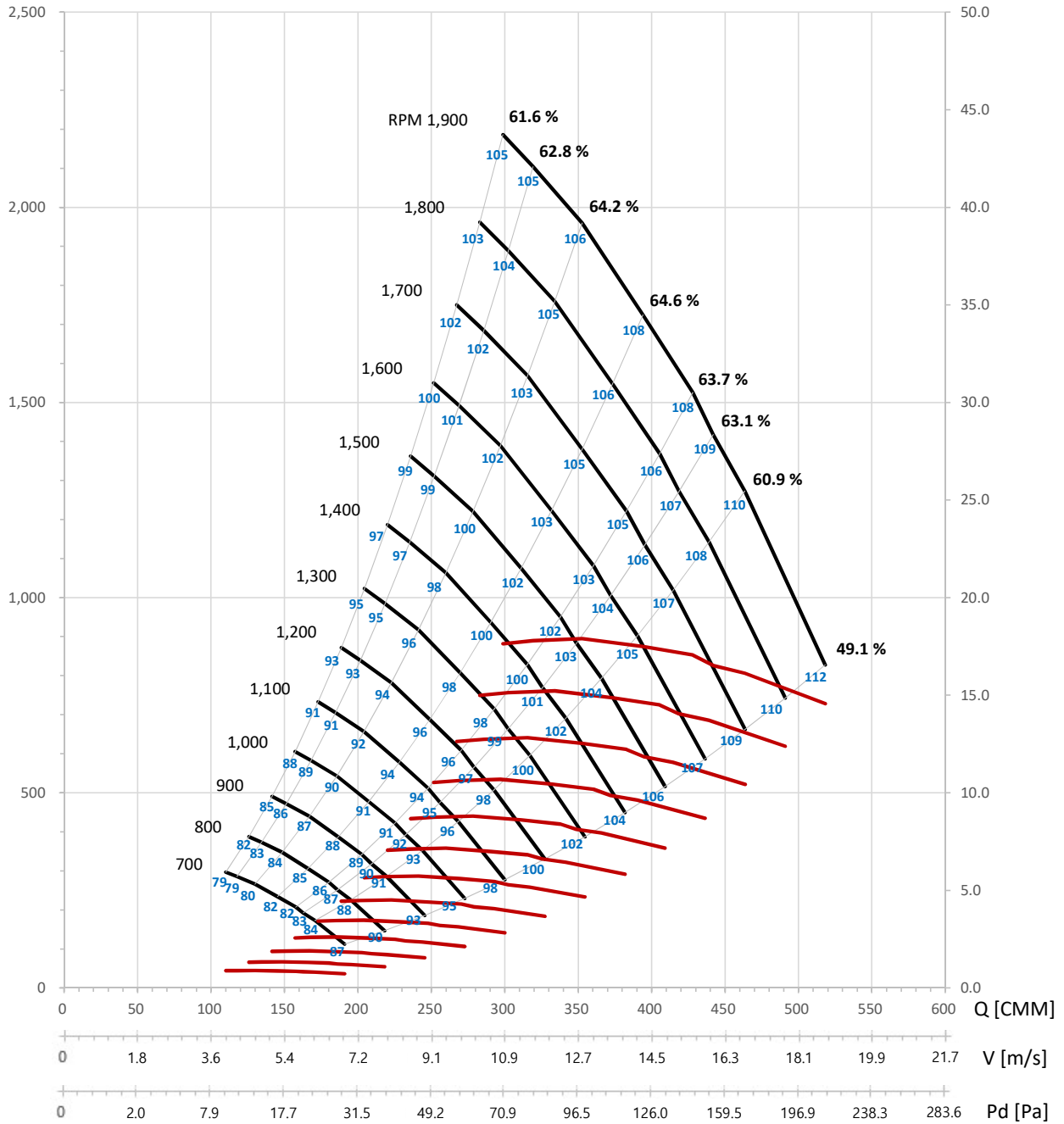
BACKWARD FAN  
FEG 67



Wheel dia. 728 mm Tip Speed = 0.0384 × rpm Outlet Dim. Outlet Area 0.4600 m<sup>2</sup> Class 1 1564 rpm Class 2 2085 rpm Not Applicable

Pt [Pa]

H [kW]



- The A-weighted sound ratings shown have been calculated per AMCA International Standard 301.
- Values shown are for Outlet LwoA sound power levels for installation type A - free inlet, free outlet with partition.
- Performance certified is for installation type A - free inlet, free outlet with partition.
- Performance ratings do not include the effects of appurtenances(accessories).
- Power rating (kW) does not include transmission losses.



Wheel dia. 820 mm Tip Speed = 0.0432 × rpm Outlet Dim. Outlet Area 0.5800 m<sup>2</sup> Class 1 1388 rpm Class 2 1851 rpm Not Applicable

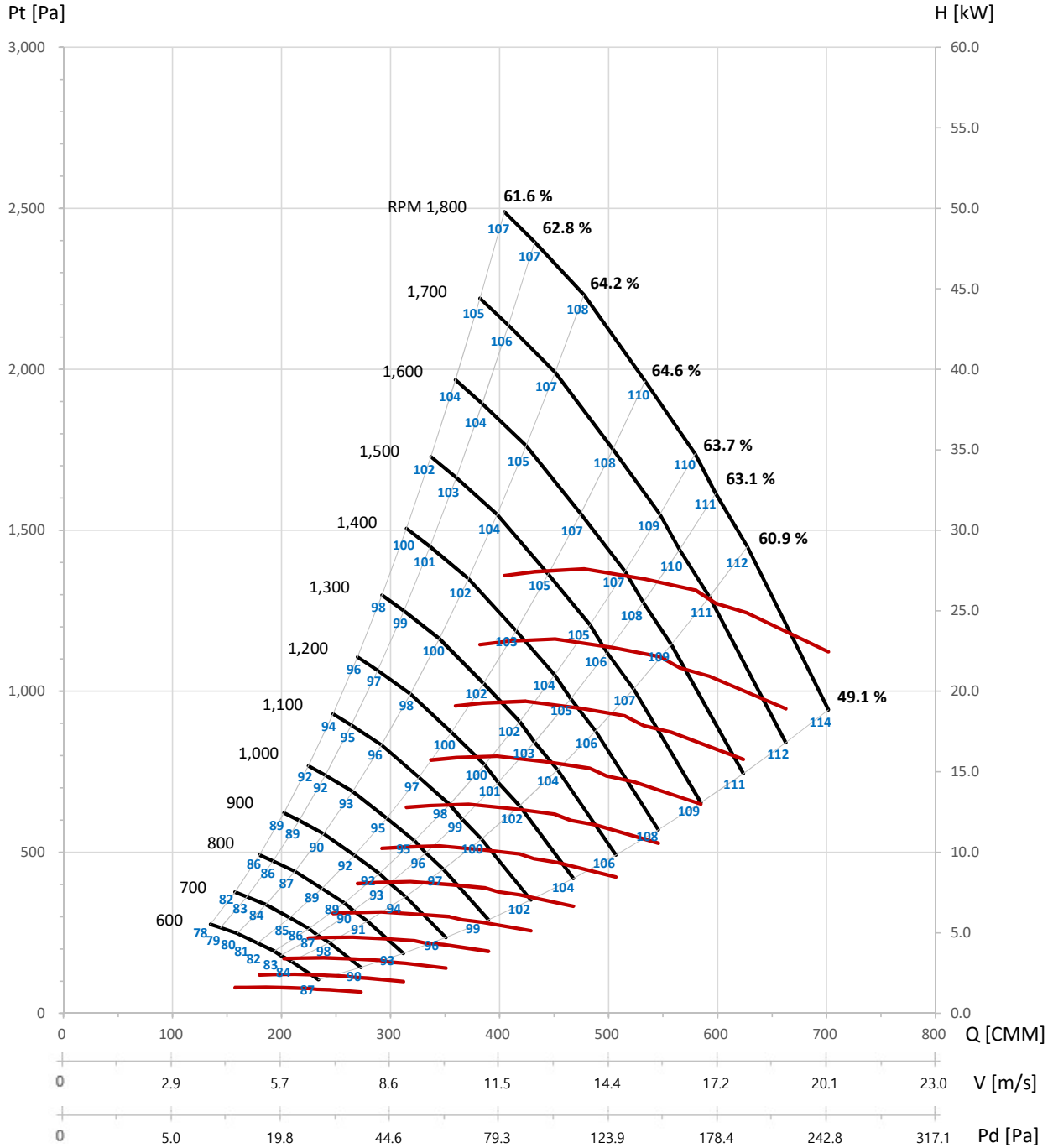
Det.	N	Pt	Ps	Q	H	EtaT	EtaS	LwO	Det.	N	Pt	Ps	Q	H	EtaT	EtaS	LwO
	[r/min]	[Pa]	[Pa]	[m <sup>3</sup> /min]	[kW]	[%]	[%]	[dB(A)]		[r/min]	[Pa]	[Pa]	[m <sup>3</sup> /min]	[kW]	[%]	[%]	[dB(A)]
1	600	105	78	233.9	0.83	49.1	36.3	87	1	700	143	106	272.9	1.32	49.1	36.3	90
2	600	161	139	209.1	0.92	60.9	52.7	84	2	700	219	190	244.0	1.46	60.9	52.7	88
3	600	179	160	199.4	0.94	63.1	56.2	83	3	700	244	217	232.7	1.50	63.1	56.2	87
4	600	193	174	193.2	0.97	63.7	57.6	82	4	700	263	238	225.3	1.55	63.7	57.6	86
5	600	218	202	177.9	1.00	64.6	60.0	81	5	700	297	276	207.5	1.59	64.6	60.0	85
6	600	248	235	159.1	1.02	64.2	61.0	80	6	700	337	320	185.7	1.62	64.2	61.0	84
7	600	266	256	144.1	1.02	62.8	60.4	79	7	700	362	348	168.1	1.61	62.8	60.4	83
8	600	277	268	134.8	1.01	61.6	59.6	78	8	700	376	364	157.3	1.60	61.6	59.6	82
1	800	186	138	311.8	1.97	49.1	36.3	93	1	900	236	174	350.8	2.81	49.1	36.3	96
2	800	286	248	278.8	2.18	60.9	52.7	91	2	900	362	313	313.7	3.11	60.9	52.7	94
3	800	319	284	265.9	2.24	63.1	56.2	90	3	900	404	359	299.1	3.18	63.1	56.2	93
4	800	343	310	257.5	2.31	63.7	57.6	89	4	900	434	393	289.7	3.29	63.7	57.6	92
5	800	388	360	237.2	2.37	64.6	60.0	89	5	900	491	456	266.8	3.37	64.6	60.0	92
6	800	441	418	212.2	2.42	64.2	61.0	87	6	900	558	530	238.7	3.45	64.2	61.0	90
7	800	473	455	192.1	2.41	62.8	60.4	86	7	900	599	576	216.1	3.43	62.8	60.4	89
8	800	492	476	179.8	2.39	61.6	59.6	86	8	900	622	602	202.3	3.40	61.6	59.6	89
1	1000	291	215	389.8	3.85	49.1	36.3	99	1	1100	352	261	428.8	5.13	49.1	36.3	102
2	1000	447	387	348.6	4.26	60.9	52.7	97	2	1100	541	468	383.4	5.67	60.9	52.7	100
3	1000	498	443	332.4	4.37	63.1	56.2	96	3	1100	603	537	365.6	5.81	63.1	56.2	99
4	1000	536	485	321.9	4.51	63.7	57.6	95	4	1100	649	587	354.1	6.00	63.7	57.6	98
5	1000	606	562	296.5	4.62	64.6	60.0	95	5	1100	733	681	326.1	6.15	64.6	60.0	97
6	1000	689	654	265.2	4.73	64.2	61.0	93	6	1100	833	791	291.8	6.30	64.2	61.0	96
7	1000	739	711	240.2	4.70	62.8	60.4	92	7	1100	895	860	264.2	6.26	62.8	60.4	95
8	1000	768	743	224.7	4.66	61.6	59.6	92	8	1100	930	899	247.2	6.20	61.6	59.6	94
1	1200	419	310	467.8	6.65	49.1	36.3	104	1	1300	492	364	506.7	8.46	49.1	36.3	106
2	1200	644	557	418.3	7.37	60.9	52.7	102	2	1300	756	654	453.1	9.37	60.9	52.7	104
3	1200	718	639	398.8	7.55	63.1	56.2	101	3	1300	842	749	432.1	9.59	63.1	56.2	103
4	1200	772	698	386.3	7.79	63.7	57.6	100	4	1300	906	819	418.5	9.91	63.7	57.6	102
5	1200	873	810	355.8	7.99	64.6	60.0	100	5	1300	1024	951	385.4	10.16	64.6	60.0	102
6	1200	992	941	318.3	8.18	64.2	61.0	98	6	1300	1164	1105	344.8	10.40	64.2	61.0	100
7	1200	1065	1024	288.2	8.13	62.8	60.4	97	7	1300	1250	1201	312.2	10.33	62.8	60.4	99
8	1200	1106	1070	269.7	8.06	61.6	59.6	96	8	1300	1298	1256	292.2	10.24	61.6	59.6	98
1	1400	570	422	545.7	10.57	49.1	36.3	108	1	1500	655	485	584.7	13.00	49.1	36.3	109
2	1400	877	759	488.0	11.70	60.9	52.7	106	2	1500	1007	871	522.8	14.39	60.9	52.7	107
3	1400	977	869	465.3	11.98	63.1	56.2	105	3	1500	1121	998	498.6	14.74	63.1	56.2	106
4	1400	1051	950	450.7	12.37	63.7	57.6	104	4	1500	1206	1091	482.9	15.22	63.7	57.6	105
5	1400	1188	1102	415.1	12.69	64.6	60.0	103	5	1500	1364	1266	444.7	15.61	64.6	60.0	105
6	1400	1350	1281	371.3	12.98	64.2	61.0	102	6	1500	1550	1471	397.9	15.97	64.2	61.0	104
7	1400	1449	1393	336.2	12.91	62.8	60.4	101	7	1500	1664	1599	360.2	15.87	62.8	60.4	103
8	1400	1506	1457	314.6	12.79	61.6	59.6	100	8	1500	1728	1672	337.1	15.73	61.6	59.6	102
1	1600	745	551	623.7	15.77	49.1	36.3	111	1	1700	841	623	662.7	18.92	49.1	36.3	112
2	1600	1145	991	557.7	17.46	60.9	52.7	109	2	1700	1293	1118	592.5	20.94	60.9	52.7	111
3	1600	1276	1135	531.8	17.89	63.1	56.2	108	3	1700	1440	1281	565.0	21.45	63.1	56.2	110
4	1600	1373	1241	515.1	18.47	63.7	57.6	107	4	1700	1550	1401	547.3	22.15	63.7	57.6	109
5	1600	1551	1440	474.3	18.94	64.6	60.0	107	5	1700	1751	1626	504.0	22.72	64.6	60.0	108
6	1600	1763	1674	424.4	19.38	64.2	61.0	105	6	1700	1990	1889	450.9	23.25	64.2	61.0	107
7	1600	1893	1820	384.3	19.27	62.8	60.4	104	7	1700	2137	2054	408.3	23.11	62.8	60.4	106
8	1600	1967	1902	359.6	19.09	61.6	59.6	104	8	1700	2220	2148	382.1	22.90	61.6	59.6	105
1	1800	943	698	701.6	22.46	49.1	36.3	114									
2	1800	1450	1254	627.4	24.86	60.9	52.7	112									
3	1800	1614	1437	598.3	25.47	63.1	56.2	111									
4	1800	1737	1570	579.5	26.29	63.7	57.6	110									
5	1800	1964	1822	533.6	26.97	64.6	60.0	110									
6	1800	2231	2118	477.4	27.60	64.2	61.0	108									
7	1800	2396	2303	432.3	27.43	62.8	60.4	107									
8	1800	2489	2408	404.5	27.19	61.6	59.6	107									

- The A-weighted sound ratings shown have been calculated per AMCA International Standard 301.
- Values shown are for Outlet LwoA sound power levels for installation type A - free inlet, free outlet with partition.
- Performance certified is for installation type A - free inlet, free outlet with partition.
- Performance ratings do not include the effects of appurtenances(accessories).
- Power rating (kW) does not include transmission losses.





Wheel dia. 820 mm	Tip Speed = 0.0432 × rpm	Outlet Dim.	Outlet Area 0.5800 m <sup>2</sup>	Class 1 1388 rpm	Class 2 1851 rpm	Not Applicable
-------------------	--------------------------	-------------	-----------------------------------	------------------	------------------	----------------



- The A-weighted sound ratings shown have been calculated per AMCA International Standard 301.
- Values shown are for Outlet LwoA sound power levels for installation type A - free inlet, free outlet with partition.
- Performance certified is for installation type A - free inlet, free outlet with partition.
- Performance ratings do not include the effects of appurtenances(accessories).
- Power rating (kW) does not include transmission losses.

Taeil Blower Co., LTD  
TPLB Series

TPLB-900

BACKWARD FAN  
FEG 67



Wheel dia. 923 mm Tip Speed = 0.0486 × rpm Outlet Dim' Outlet Area 0.7400 m<sup>2</sup> Class 1 1234 rpm Class 2 1645 rpm Not Applicable

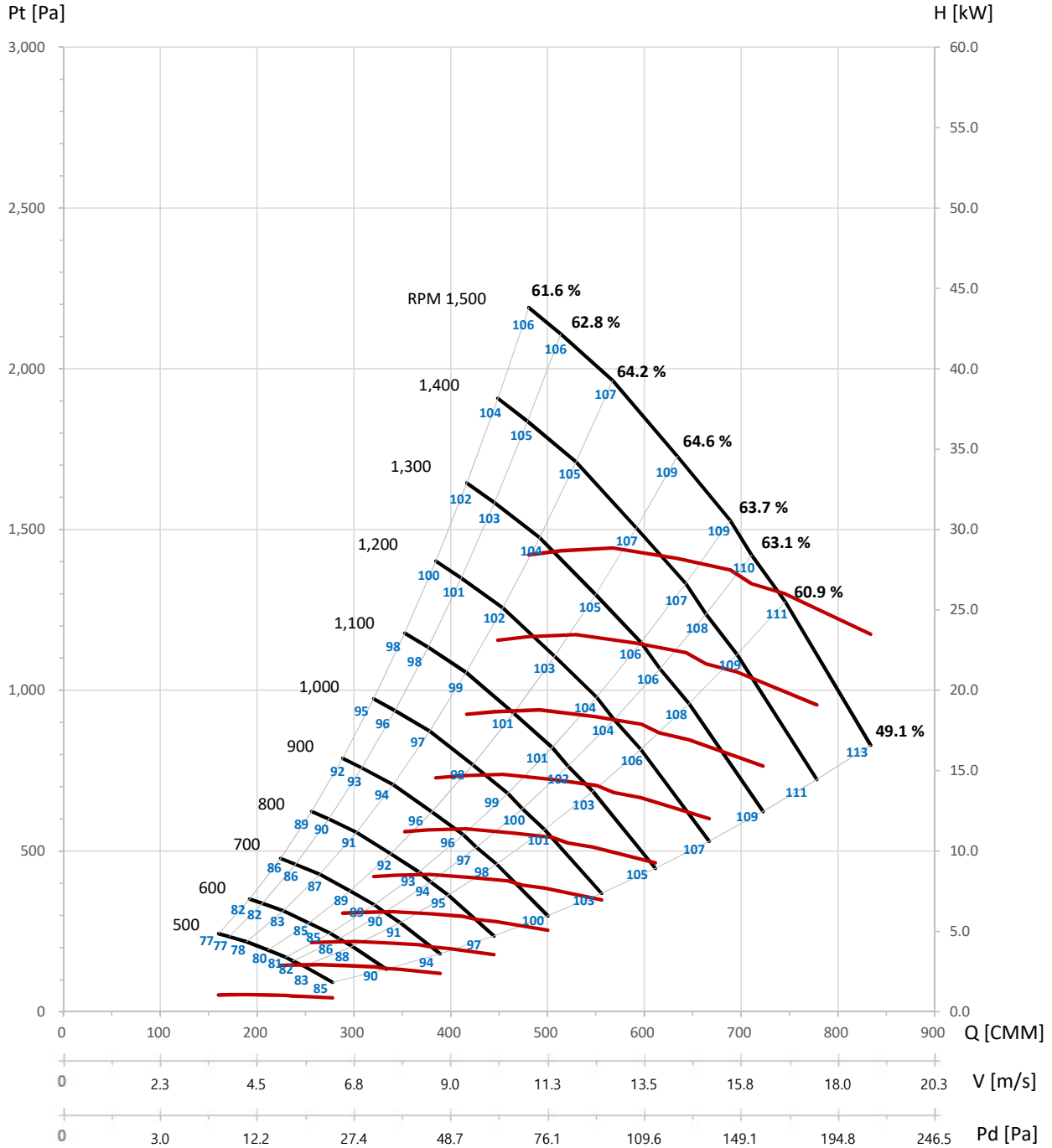
Det.	N	Pt	Ps	Q	H	EtaT	EtaS	LwO	Det.	N	Pt	Ps	Q	H	EtaT	EtaS	LwO
	[r/min]	[Pa]	[Pa]	[m <sup>3</sup> /min]	[kW]	[%]	[%]	[dB(A)]		[r/min]	[Pa]	[Pa]	[m <sup>3</sup> /min]	[kW]	[%]	[%]	[dB(A)]
1	500	92	68	278.0	0.87	49.1	36.3	85	1	600	133	98	333.5	1.50	49.1	36.3	90
2		142	123	248.5	0.96	60.9	52.7	83	2		204	177	298.3	1.66	60.9	52.7	88
3		158	140	237.0	0.99	63.1	56.2	82	3		227	202	284.4	1.70	63.1	56.2	86
4		170	154	229.6	1.02	63.7	57.6	81	4		245	221	275.5	1.76	63.7	57.6	85
5		192	178	211.4	1.04	64.6	60.0	80	5		276	257	253.7	1.80	64.6	60.0	85
6		218	207	189.1	1.07	64.2	61.0	78	6		314	298	227.0	1.85	64.2	61.0	83
7		234	225	171.3	1.06	62.8	60.4	77	7		337	324	205.5	1.84	62.8	60.4	82
8		243	235	160.3	1.05	61.6	59.6	77	8		350	339	192.3	1.82	61.6	59.6	82
1	700	181	134	389.1	2.39	49.1	36.3	94	1	800	236	175	444.7	3.56	49.1	36.3	97
2		278	240	348.0	2.64	60.9	52.7	91	2		363	314	397.7	3.94	60.9	52.7	95
3		309	275	331.8	2.71	63.1	56.2	90	3		404	360	379.2	4.04	63.1	56.2	94
4		333	301	321.4	2.79	63.7	57.6	89	4		435	393	367.3	4.17	63.7	57.6	93
5		376	349	296.0	2.87	64.6	60.0	89	5		491	456	338.2	4.28	64.6	60.0	92
6		428	406	264.8	2.93	64.2	61.0	87	6		558	530	302.6	4.38	64.2	61.0	91
7		459	441	239.8	2.92	62.8	60.4	86	7		600	576	274.0	4.35	62.8	60.4	90
8		477	461	224.4	2.89	61.6	59.6	86	8		623	603	256.4	4.31	61.6	59.6	89
1	900	299	221	500.3	5.07	49.1	36.3	100	1	1000	369	273	555.9	6.96	49.1	36.3	103
2		459	397	447.4	5.62	60.9	52.7	98	2		567	490	497.1	7.70	60.9	52.7	101
3		511	455	426.6	5.75	63.1	56.2	97	3		631	562	474.0	7.89	63.1	56.2	100
4		550	497	413.2	5.94	63.7	57.6	96	4		679	614	459.1	8.15	63.7	57.6	99
5		622	577	380.5	6.09	64.6	60.0	96	5		768	713	422.8	8.36	64.6	60.0	98
6		707	671	340.4	6.23	64.2	61.0	94	6		873	828	378.3	8.55	64.2	61.0	97
7		759	730	308.3	6.20	62.8	60.4	93	7		937	901	342.5	8.50	62.8	60.4	96
8		788	763	288.5	6.14	61.6	59.6	92	8		973	942	320.5	8.42	61.6	59.6	95
1	1100	446	330	611.5	9.26	49.1	36.3	105	1	1200	531	393	667.1	12.02	49.1	36.3	107
2		686	593	546.8	10.25	60.9	52.7	103	2		816	706	596.5	13.31	60.9	52.7	106
3		764	680	521.4	10.50	63.1	56.2	102	3		909	809	568.8	13.63	63.1	56.2	104
4		822	743	505.0	10.84	63.7	57.6	101	4		978	884	550.9	14.08	63.7	57.6	104
5		929	862	465.1	11.12	64.6	60.0	101	5		1106	1026	507.4	14.44	64.6	60.0	103
6		1056	1002	416.1	11.38	64.2	61.0	99	6		1257	1193	453.9	14.78	64.2	61.0	102
7		1134	1090	376.8	11.31	62.8	60.4	98	7		1349	1297	411.0	14.69	62.8	60.4	101
8		1178	1139	352.6	11.21	61.6	59.6	98	8		1402	1356	384.6	14.56	61.6	59.6	100
1	1300	623	461	722.7	15.29	49.1	36.3	109	1	1400	722	535	778.3	19.09	49.1	36.3	111
2		958	829	646.2	16.92	60.9	52.7	108	2		1111	961	695.9	21.14	60.9	52.7	109
3		1067	949	616.2	17.34	63.1	56.2	106	3		1237	1101	663.6	21.65	63.1	56.2	108
4		1148	1038	596.8	17.90	63.7	57.6	106	4		1332	1204	642.7	22.35	63.7	57.6	107
5		1298	1204	549.6	18.36	64.6	60.0	105	5		1505	1397	591.9	22.93	64.6	60.0	107
6		1475	1400	491.8	18.79	64.2	61.0	104	6		1710	1623	529.6	23.46	64.2	61.0	105
7		1583	1522	445.3	18.67	62.8	60.4	103	7		1836	1765	479.5	23.32	62.8	60.4	105
8		1645	1591	416.7	18.51	61.6	59.6	102	8		1908	1845	448.7	23.11	61.6	59.6	104
1	1500	829	614	833.9	23.48	49.1	36.3	113									
2		1275	1103	745.6	26.00	60.9	52.7	111									
3		1420	1264	711.0	26.63	63.1	56.2	110									
4		1529	1382	688.7	27.49	63.7	57.6	109									
5		1728	1603	634.2	28.20	64.6	60.0	109									
6		1963	1864	567.4	28.86	64.2	61.0	107									
7		2108	2026	513.8	28.68	62.8	60.4	106									
8		2190	2119	480.8	28.43	61.6	59.6	106									

- The A-weighted sound ratings shown have been calculated per AMCA International Standard 301.
- Values shown are for Outlet LwoA sound power levels for installation type A - free inlet, free outlet with partition.
- Performance certified is for installation type A - free inlet, free outlet with partition.
- Performance ratings do not include the effects of appurtenances(accessories).
- Power rating (kW) does not include transmission losses.





Wheel dia. 923 mm	Tip Speed = 0.0486 × rpm	Outlet Dim	Outlet Area 0.7400 m <sup>2</sup>	Class 1 1234 rpm	Class 2 1645 rpm	Not Applicable
-------------------	--------------------------	------------	-----------------------------------	------------------	------------------	----------------



- The A-weighted sound ratings shown have been calculated per AMCA International Standard 301.
- Values shown are for Outlet LwoA sound power levels for installation type A - free inlet, free outlet with partition.
- Performance certified is for installation type A - free inlet, free outlet with partition.
- Performance ratings do not include the effects of appurtenances(accessories).
- Power rating (kW) does not include transmission losses.

Taeil Blower Co., LTD  
TPLB Series

TPLB-1000

BACKWARD FAN  
FEG 67



Wheel dia. 1025 mm Tip Speed = 0.0540 × rpm Outlet Dim. Outlet Area 0.9100 m<sup>2</sup> Class 1 1110 rpm Class 2 1481 rpm Not Applicable

Det.	N	Pt	Ps	Q	H	EtaT	EtaS	LwO	Det.	N	Pt	Ps	Q	H	EtaT	EtaS	LwO
	[r/min]	[Pa]	[Pa]	[m <sup>3</sup> /min]	[kW]	[%]	[%]	[dB(A)]		[r/min]	[Pa]	[Pa]	[m <sup>3</sup> /min]	[kW]	[%]	[%]	[dB(A)]
1	500	114	84	380.7	1.47	49.1	36.3	88	1	600	164	121	456.8	2.54	49.1	36.3	93
2		175	151	340.4	1.63	60.9	52.7	86	2		252	218	408.5	2.81	60.9	52.7	91
3		195	173	324.6	1.67	63.1	56.2	85	3		280	249	389.5	2.88	63.1	56.2	90
4		209	189	314.4	1.72	63.7	57.6	84	4		302	273	377.2	2.97	63.7	57.6	89
5		237	220	289.5	1.76	64.6	60.0	83	5		341	316	347.4	3.05	64.6	60.0	88
6		269	255	259.0	1.81	64.2	61.0	82	6		387	368	310.8	3.12	64.2	61.0	87
7		289	278	234.5	1.79	62.8	60.4	80	7		416	400	281.4	3.10	62.8	60.4	85
8		300	290	219.5	1.78	61.6	59.6	80	8		432	418	263.4	3.07	61.6	59.6	85
1	700	223	165	532.9	4.03	49.1	36.3	97	1	800	291	215	609.1	6.02	49.1	36.3	100
2		343	296	476.5	4.46	60.9	52.7	95	2		447	387	544.6	6.66	60.9	52.7	98
3		381	339	454.4	4.57	63.1	56.2	93	3		498	443	519.3	6.82	63.1	56.2	97
4		411	371	440.1	4.72	63.7	57.6	93	4		536	485	503.0	7.04	63.7	57.6	96
5		464	431	405.3	4.84	64.6	60.0	92	5		606	562	463.2	7.22	64.6	60.0	96
6		527	501	362.6	4.95	64.2	61.0	91	6		689	654	414.4	7.39	64.2	61.0	94
7		566	544	328.3	4.92	62.8	60.4	89	7		739	711	375.3	7.35	62.8	60.4	93
8		588	569	307.3	4.88	61.6	59.6	89	8		768	743	351.2	7.28	61.6	59.6	92
1	900	368	273	685.2	8.57	49.1	36.3	103	1	1000	455	337	761.3	11.75	49.1	36.3	106
2		566	490	612.7	9.48	60.9	52.7	101	2		699	605	680.8	13.01	60.9	52.7	104
3		631	561	584.2	9.72	63.1	56.2	100	3		779	693	649.2	13.33	63.1	56.2	103
4		679	613	565.9	10.03	63.7	57.6	99	4		838	757	628.7	13.76	63.7	57.6	102
5		767	712	521.1	10.29	64.6	60.0	99	5		947	879	579.0	14.11	64.6	60.0	102
6		872	827	466.2	10.53	64.2	61.0	97	6		1076	1021	518.1	14.44	64.2	61.0	100
7		936	900	422.2	10.46	62.8	60.4	96	7		1155	1111	469.1	14.35	62.8	60.4	99
8		972	941	395.1	10.37	61.6	59.6	96	8		1200	1161	438.9	14.23	61.6	59.6	98
1	1100	550	407	837.5	15.64	49.1	36.3	108	1	1200	655	485	913.6	20.31	49.1	36.3	111
2		846	732	748.9	17.32	60.9	52.7	106	2		1007	871	816.9	22.48	60.9	52.7	109
3		942	838	714.1	17.74	63.1	56.2	105	3		1121	998	779.0	23.03	63.1	56.2	108
4		1014	916	691.6	18.31	63.7	57.6	104	4		1206	1091	754.5	23.78	63.7	57.6	107
5		1146	1063	636.9	18.78	64.6	60.0	104	5		1364	1266	694.8	24.38	64.6	60.0	106
6		1302	1236	569.9	19.22	64.2	61.0	102	6		1550	1471	621.7	24.95	64.2	61.0	105
7		1398	1344	516.0	19.11	62.8	60.4	101	7		1664	1599	562.9	24.80	62.8	60.4	104
8		1452	1405	482.8	18.94	61.6	59.6	101	8		1728	1672	526.7	24.58	61.6	59.6	103
1	1300	768	569	989.7	25.82	49.1	36.3	113	1	1400	891	660	1065.9	32.25	49.1	36.3	114
2		1181	1022	885.0	28.58	60.9	52.7	111	2		1370	1185	953.1	35.70	60.9	52.7	113
3		1316	1171	843.9	29.28	63.1	56.2	110	3		1526	1358	908.8	36.57	63.1	56.2	111
4		1416	1280	817.4	30.23	63.7	57.6	109	4		1642	1484	880.2	37.75	63.7	57.6	111
5		1600	1485	752.8	31.00	64.6	60.0	108	5		1856	1723	810.7	38.72	64.6	60.0	110
6		1819	1726	673.5	31.73	64.2	61.0	107	6		2109	2002	725.3	39.63	64.2	61.0	109
7		1953	1877	609.8	31.54	62.8	60.4	106	7		2264	2177	656.7	39.39	62.8	60.4	108
8		2029	1962	570.6	31.26	61.6	59.6	105	8		2353	2276	614.5	39.04	61.6	59.6	107

- The A-weighted sound ratings shown have been calculated per AMCA International Standard 301.
- Values shown are for Outlet LwO sound power levels for installation type A - free inlet, free outlet with partition.
- Performance certified is for installation type A - free inlet, free outlet with partition.
- Performance ratings do not include the effects of appurtenances(accessories).
- Power rating (kW) does not include transmission losses.

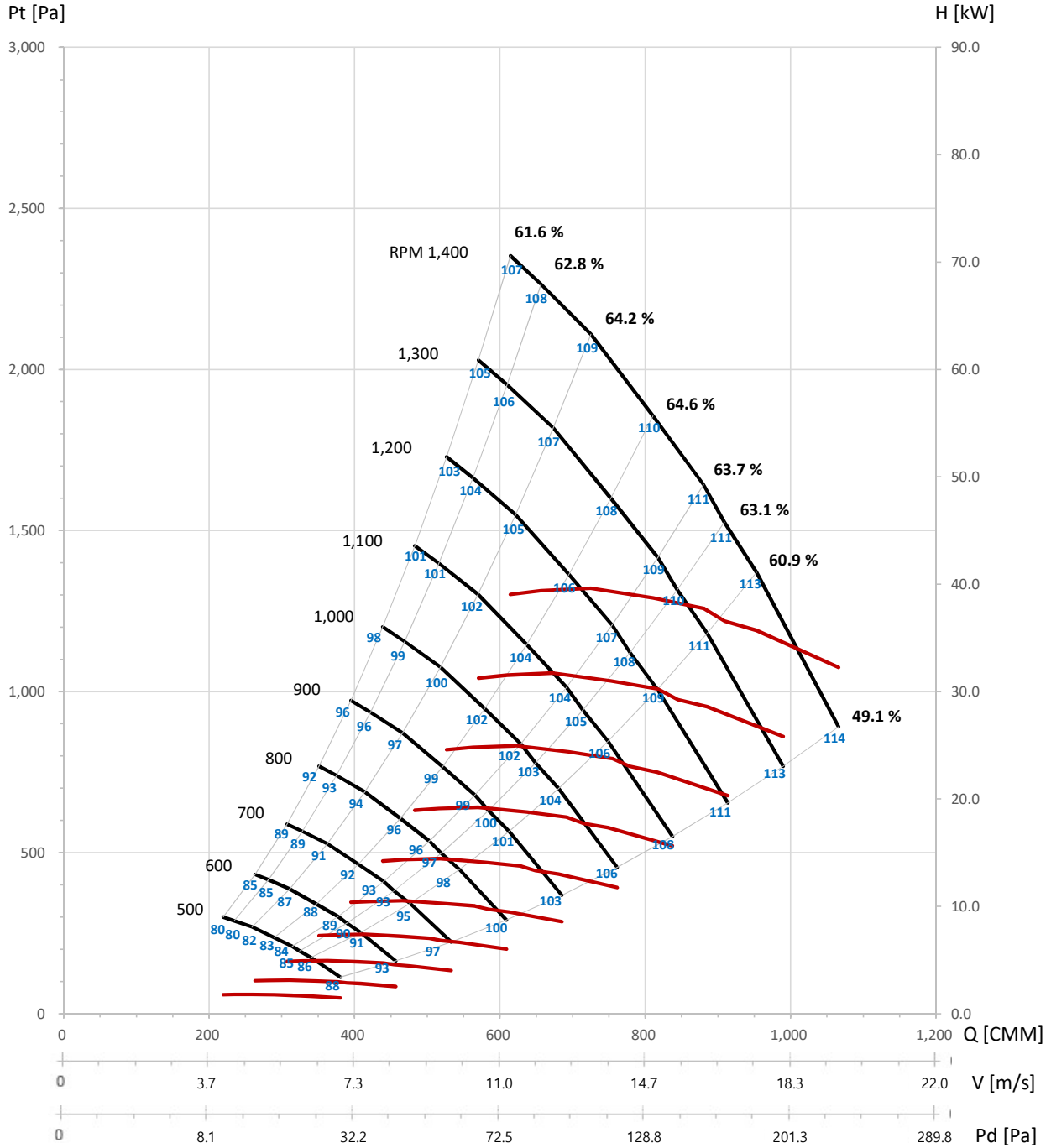
Taeil Blower Co., LTD  
TPLB Series

TPLB-1000

BACKWARD FAN  
FEG 67



Wheel dia. 1025 mm Tip Speed = 0.0540 × rpm Outlet Dim. Outlet Area 0.9100 m<sup>2</sup> Class 1 1110 rpm Class 2 1481 rpm Not Applicable



- The A-weighted sound ratings shown have been calculated per AMCA International Standard 301.
- Values shown are for Outlet LwA sound power levels for installation type A - free inlet, free outlet with partition.
- Performance certified is for installation type A - free inlet, free outlet with partition.
- Performance ratings do not include the effects of appurtenances(accessories).
- Power rating (kW) does not include transmission losses.



(주) 태일송풍기

TAE IL BLOWER MFG. Co.,Ltd.

OFFICE : 50, Jeongmal-gil, Docheon-myeon, Changnyeong-gun, Gyeongsangnam-do, Korea

TEL : 82 055-521-7300 / FAX : 82 055-521-6977

Homepage : [www.tlbfmg.co.kr](http://www.tlbfmg.co.kr) / E-mail : [Sales@tae-il.co.kr](mailto:Sales@tae-il.co.kr)