

**KRUGER**

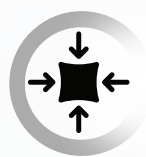


# TSK II SERIES

IN-LINE CENTRIFUGAL DUCT FAN



Powerful



Compact Size



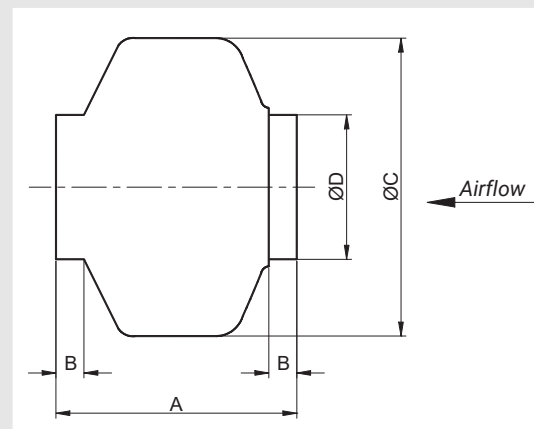
Easy  
Installation

# In-Line Centrifugal Duct Fan – TSK II Series

KRUGER

- TSK II fans are designed for direct in-line connection with industrial circular ducting and are suitable for installation in most standard commercial duct sizes.
- Suitable for applications in residential, commercial and industrial exhaust and supply ventilation such as bathrooms, kitchens, offices, etc.
- The models operate within ambient air temperatures from -20°C to +40°C.
- TSK II series fan casings are made from corrosion-resistant galvanized steel.
- Backward-curved impellers are factory-matched to external rotor motors and dynamically balanced to ISO 1940 for vibration-free operation.
- All models come with a remotely mounted wiring junction box for flexible installation.
- Motors are fully speed-controllable via electronic or autotransformer voltage regulators.
- Single-phase 230V, 50/60 Hz external rotor motors include IP44 protection and an automatic reset thermal overload device.

## Dimensions



Model	A	B	ØC	ØD	Wt (kg)
TSK II 100L	194	23	243	98	3
TSK II 125L	195	27	243	123	3
TSK II 160L	222	28	333	157	5
TSK II 200L	223	25	333	198	5
TSK II 250L	206	27	333	248	6
TSK II 315L	230	25	401	312	8



Kruger M & E Industries Corporation certifies that the TSK II series shown herein is licensed to bear the AMCA Seal.

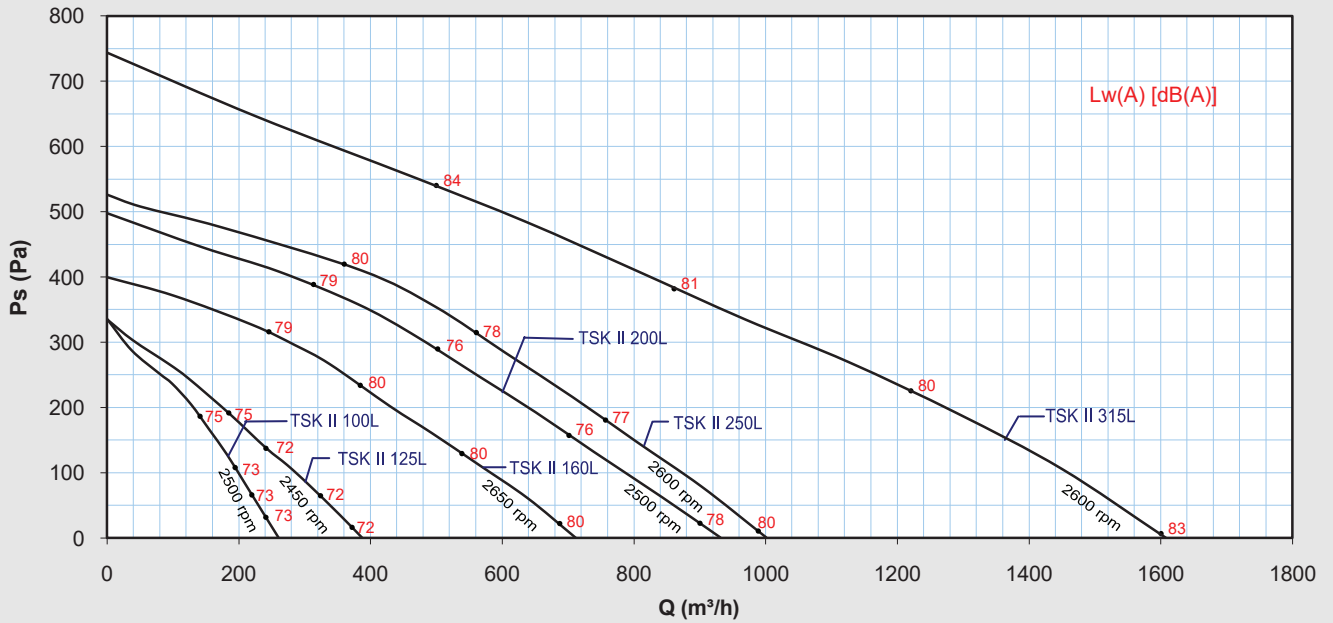
The ratings shown are based on tests and procedures performed in accordance with AMCA publication 211 and AMCA publication 311 and comply with the requirements of the AMCA Certified Ratings Program.

## Technical Data

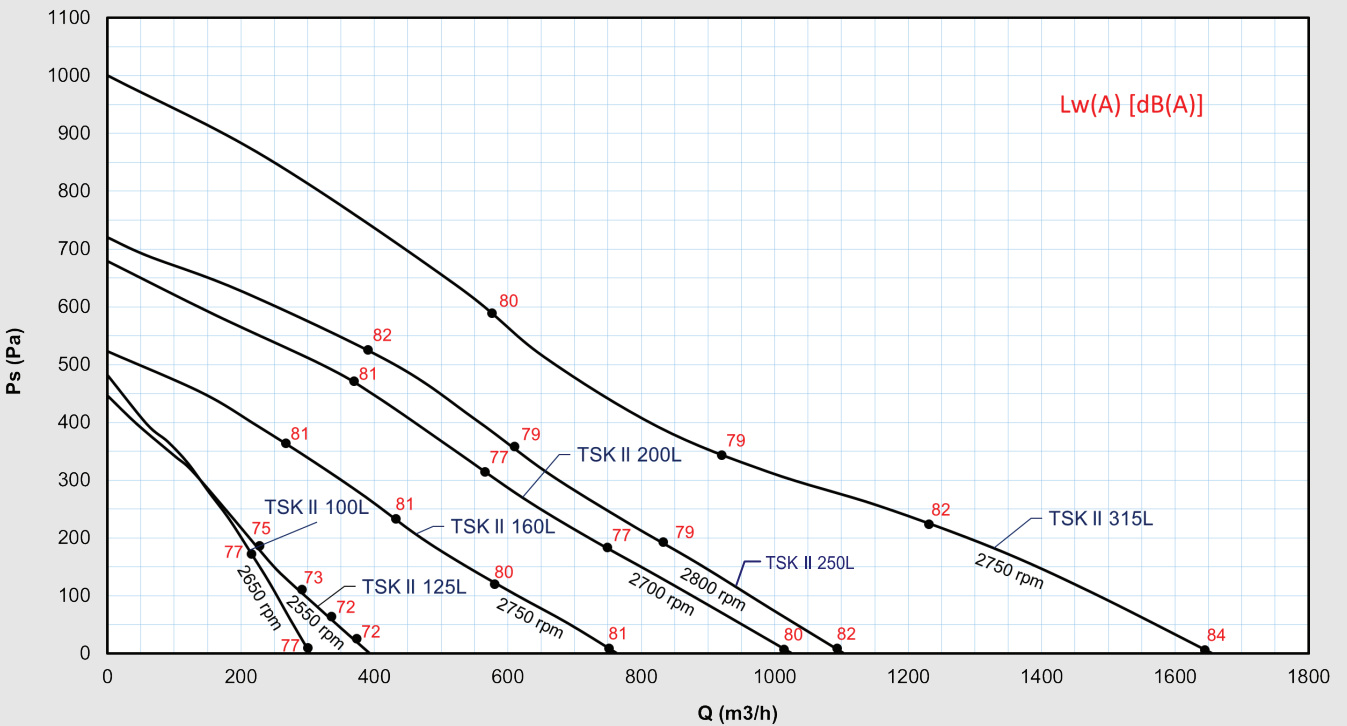
Model	Max Q m <sup>3</sup> /h	Max Input Power W	Motor Protection	Phase	N° Pole	Hz	Max Amp	Insulation Class	dB (A) at 3m	RPM
TSK II 100L	265/304	73/93	IP44	1	2	50/60	0.33/0.41	B	52/57	2500/2650
TSK II 125L	395/400	75/95	IP44	1	2	50/60	0.35/0.43	B	51/51	2450/2550
TSK II 160L	726/780	121/178	IP44	1	2	50/60	0.55/0.67	B	59/60	2650/2750
TSK II 200L	950/1045	141/201	IP44	1	2	50/60	0.72/0.93	B	57/58	2500/2700
TSK II 250L	1020/1125	140/212	IP44	1	2	50/60	0.80/1.02	B	59/61	2600/2800
TSK II 315L	1609/1688	300/352	IP44	1	2	50/60	1.45/1.76	B	60/63	2600/2750

- Speed (RPM) shown is nominal. Performance is based on actual speed of test.
- Performance ratings do not include the effects of appurtenances (accessories).
- dB(A) at 3m with ducted inlet and outlet at free field conditions.
- dB(A) sound pressure levels are not licensed by AMCA International.

Performance Data - 50Hz



Performance Data - 60Hz



- Speed (RPM) shown is nominal. Performance is based on actual speed of test.
- Performance ratings do not include the effects of appurtenances (accessories).
- The A-weighted sound ratings shown have been calculated per AMCA International Standard 301. Values shown are for inlet LwiA sound power levels for installation type D: ducted inlet, ducted outlet. Ratings include the effect of duct end correction.



**Kruger M & E Industries Corporation**

B3 Welborne Industrial Park, Bancal, Carmona,  
Cavite, Philippines 4116

Tel: +63-917-561-9088, +63-917-596-7288,  
+63-917-712-8438, +63-917-306-8288

Website: [www.krugerfan.com](http://www.krugerfan.com)

LEA026.E4.ED1.KPH December 2025

**A member of**

