

 AIR COMFORT

 FIRE SAFETY

JMC AEROFOIL

PERFORMANCE CATALOGUE

» WE BRING BETTER AIR TO LIFE



Certified Model :
JMC - 100, 112, 125, 140

JMC AEROFOIL - DESCRIPTION

Features

- 1000 - 1400 mm diameter
- Volumes up to 186,500 m³/h (51.8 m³/s)
- Static pressures up to 2400 Pa
- Fans tested to AMCA300
- High energy efficiency
- Low installed noise levels
- Motor protection IP55
- Larger sizes available please enquire for more information

Electrical Supply

- 380-420V/50-60Hz/3 φ

Temperature Range

- -40°C to 50°C as standard
- 50°C to 70°C must be run at full speed only

Sizes

1000, 1120, 1250, and 1400 mm.

Impellers

A unique high efficiency aerofoil section blade with a purposely smoothed hub and clamp plate for adjustable pitch angle availability.

Fläkt Woods impellers are all high pressure die cast to offer thin aerofoil sections for low generation of noise. Every cast aluminium component is X-ray examined using Real Time Radiography inspection prior to assembly. The maximum pitch angles shown allow for speed control by frequency inverter (3ph only).



Motors

All motors are totally enclosed air stream rated class F insulation. Constructed from aluminium or cast iron as standard with special "T" slot, pad or foot mounted fixings. Single speed motors are suitable for speed control by voltage regulation where indicated. Three phase motors are suitable or use with frequency inverters, suitable for turn down to 20% of maximum speed. Two speed motors are available on request. Suitable for horizontal or vertical shaft operation. Supplied IP55, with removable drain plugs.



Sealed for life bearings lubricated with wide temperature range grease. These motors are suitable for inverter speed control down to 20% of full speed and where within scope incorporate IE2 compliant motors.

Casings

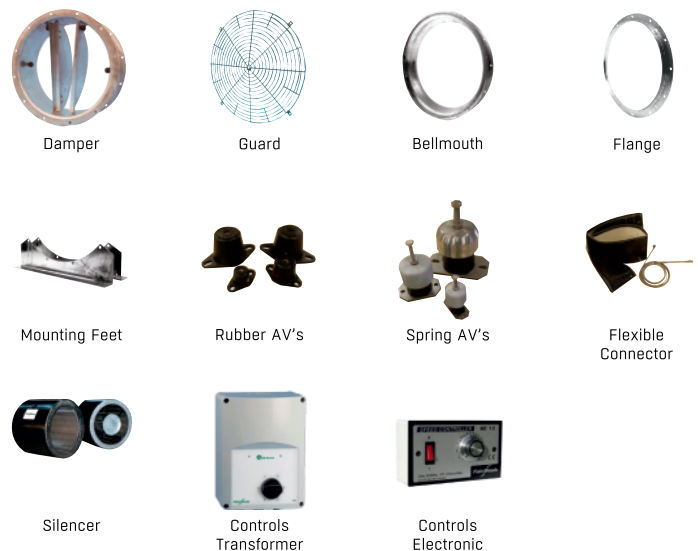
JMC Aerofoil fans are available in either a long cased form, complete with an externally mounted pre-wired electrical terminal box, or short cased for duct or plate installation. Casings are spun from sheet steel with integral pre-drilled and radiused inlet flanges. The galvanised finish gives a high resistance to corrosion and is ideal for external as well as internal use.

Product Code

100JMC/25/4/6/32

- 100 - denotes the fan impeller diameter in centimetres
- JMC - denotes fan type
- 25 - denotes impeller hub diameter in centimetres
- 4 - denotes a nominal 4 pole speed
- 6 - denotes the number of blades
- 32 - denotes the pitch angle for the required duty

Accessories Available (on request)



HOW TO SPECIFY A FAN

Specifying The Fan

Having chosen the fan most suitable for your individual application.

Please specify as follows:-

1. The fan shall be manufactured by FlaktGroup model type JMC Aerofoil long or short cased (L or S-type).
2. Motors, squirrel cage type, insulated to class F, bearings lubricated with wide temperature grease, keyed shaft. To comply with BS5000 Pt 99 and IEC 34-1. Weatherproof to IP55. (Overheat protection provided on most single phase motors).
3. Impellers, precision die cast aluminium hub and clamp-plate, with equally spaced, fully adjustable precision die cast Aerofoil section blades. All rotating aluminium components to be X-ray examined prior to machining to assure quality of castings.
4. Casings, either a long cased form complete with an externally mounted pre-wired electrical terminal box, or short cased for duct or plate installation. Casings are spun from sheet steel with integral pre-drilled flanges, fully welded seams and hot-dipped galvanised after manufacture for excellent durability.
5. Mounting Arms, manufactured from mild steel hot dipped galvanised after manufacture.
6. Performance shall be independantly approved by AMCA, and established in accordance with ISO5801:1997 installation category D, method of testing air performance and AMCA 300 for sound testing.
7. Ancillaries as required.

Ordering The Fan

After identifying the best fan for your application please order as follows:-

1. Fan type: JMC Aerofoil Long cased (L-type), or Short Cased (S-type) Form A or Form B.
2. Fan Code:
eg:100JMC/20/8/6/24
where:100denotes the Fan impeller diameter in centimetres.
JMC denotes Fan Type.
/20 denotes impeller hub diameter in centimetres.
/8 denotes a nominal 8 pole speed.
/6 denotes the number of blades.
/24 denotes the Pitch Angle for the required duty.
3. Quantity required.
4. Duty required at standard air and temperature e.g. 1.60 m³/s @ 50 Pa.
5. Motor. eg: 100L
6. Electrical Supply:
220-240 V / 50 Hz / 1 ϕ
380-420 V / 50 Hz / 3 ϕ
7. Ancillary items required.

Mounting Feet
Impeller and Motor Side Guards
Silencers with or without pod
Speed Controller (electronic or auto-transformer)
or 2 speeds with type MDS3.10
Air Operated Dampers
Matching Flanges
Bellmouth Inlets
Flexible Connectors
Vibration Isolators



FlaktGroup India Pvt. Ltd. certifies that the 100 JMC, 112 JMC, 125 JMC and 140 JMC shown herein are licenced to bear the AMCA Seal. The ratings shown are based on tests and procedures performed in accordance with AMCA publication 211 and AMCA publication 311 and comply with the requirements of the AMCA Certified Ratings Program.



GUIDE TO FAN SELECTION SELECTION EXAMPLE - TOTAL PRESSURE

There are two principle methods of expressing the pressure requirements, namely, P_F (Total) and P_{SF} (Static) pressure. The two types of pressure are related:

$$P_F = P_{SF} + P_{dF} \quad PF = \text{Fan Total pressure}$$

$$P_{SF} = \text{Fan Static pressure}$$

$$P_{dF} = \text{Fan Dynamic pressure}$$

The international convention considers fan performance in terms of total pressure, but there is also established practice relating to the use of static pressure. For this reason Fläkt Woods selection charts are laid out on a total pressure major scale and include a secondary grid for static pressure. The facility to display fan performance in terms of static pressure is necessary in order to avoid total pressure fan selections being made based on static pressure system requirements.

The guide selections are made for either total or static pressures of 100Pa. The resulting selections are quite different and highlight the consequences of selecting static pressure from charts that only display performance in terms of total pressure.

Procedure - Total Pressure (PF)

1. Guide to Chart Numbers of Possible Selections

The charts are arranged in order of fan diameter, starting at 315 mm, up to 1600 mm diameter, and in order of fan speed for each diameter, 3,5,6,9 & 12 bladed fan impellers as available.

NOTE: The chart numbers lead to a variety of fan sizes, impeller configurations and speeds. The fan selected from the alternatives available will depend on the most critical factor for the particular application - Volume Flow and Pressure required, Size, Power Consumption, Sound Level or First Cost.

2. Required Duty

Establish the volume flow and total pressure required of an individual fan at Standard Air (1.2 kg/m³).

3. Selection on Individual Fan Charts

The data provided on each performance chart is specifically for ducted - Type D (ducted) installations for both long or short cased (S-type) fans.

Providing reasonable Type D conditions are maintained in installation of the fans, no additional factors to volume flow or pressure need be incorporated for a suitable selection to be made.

Plot the duty on the selected fan charts to establish blade angle, sound level, absorbed power, motor size and rating, for the particular arrangement.

- ④ - Duty Point Required - @ Standard Air (1.2 kg/m³).
0.55 m³/s @ 100Pa total pressure.
- ① - Volume Flow = 0.55 m³/s
- ② - Fan Total Pressure = 100 Pa
- ③ - Overall inlet Sound Power Level = 72 LW (interpolated from surrounding levels).

- ④ - Pitch Angle required to achieve Duty Point = 28°
- ⑤ - Corrections to overall Sound Power Level for 28° Pitch Angle. (Operating Point is Below shaded area)

		63	125	250	500	1K	2K	4K	8K	
Sound Power	Inlet	65	67	64	65	60	54	51	45	Lw
	Level	67	70	65	65	60	54	52	46	Lw

- ⑥ - Absorbed Power @ Duty Point @ 28°
Pitch Angle = 0.09 kW
Suitable Motor for fixed speed application, 3 phase supply, from motor schedules.

Speed Regulatable Versions

If a speed regulatable version is required, (or Delta/Star reconnect on 3 phase versions) the duty volume flow required should be multiplied by 1.05 prior to fan selection being made



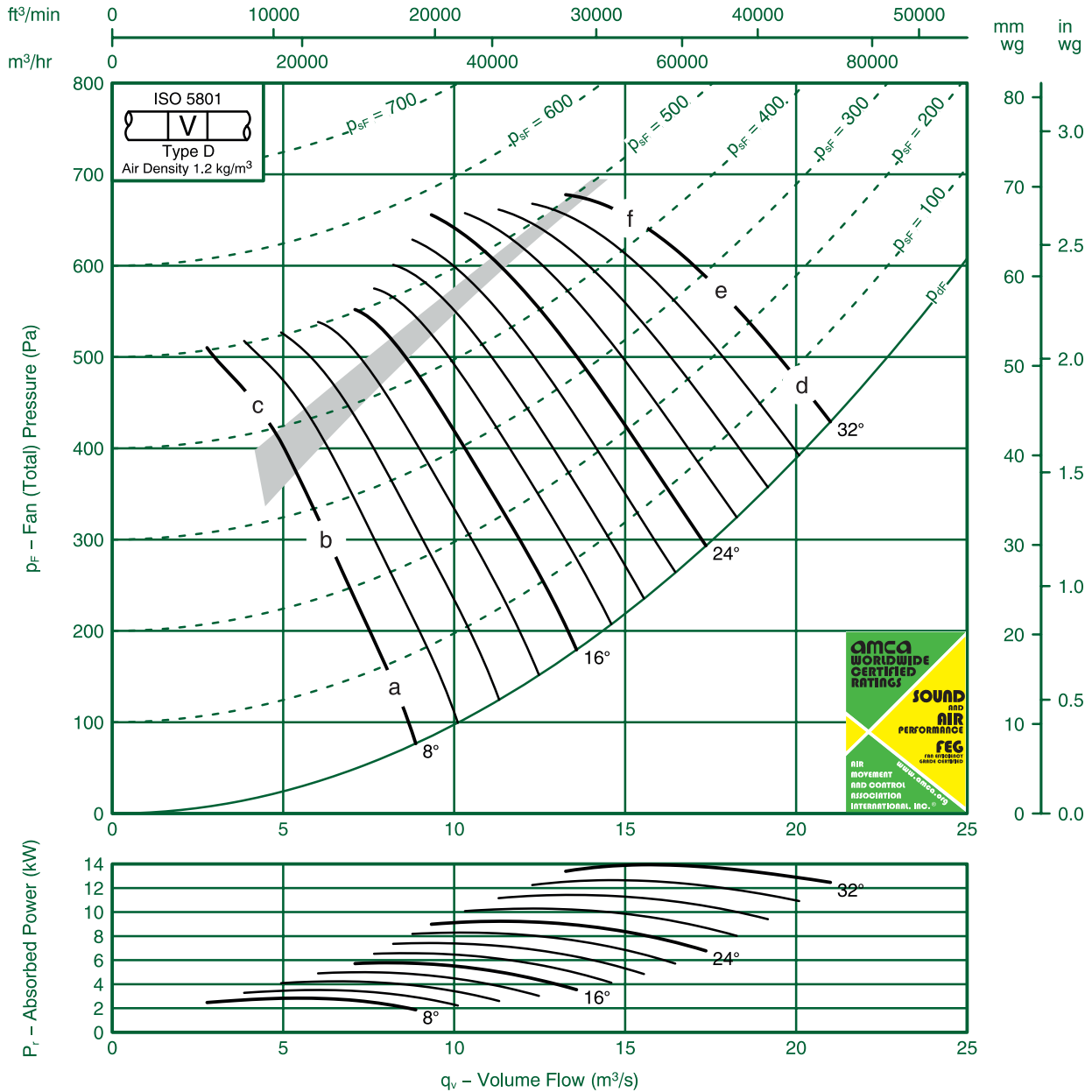
Fan Code: 100JMC/25/4/6/...

1000 mm 1450 rev/min 6 Blades 50 Hz



FEG 80

Performance certified is for installation type D-Ducted inlet, Ducted outlet. Performance ratings do not include the effects of appurtenances (accessories).



Ref	FULL OCTAVE BAND FREQUENCY								LwA
	63 Hz	125 Hz	250 Hz	500 Hz	1K Hz	2K Hz	4K Hz	8K Hz	
a	95	89	91	92	92	91	88	86	97
b	93	90	95	101	99	95	90	85	103
c	94	93	107	112	104	96	88	84	111
d	106	91	100	100	98	96	94	91	103
e	105	92	99	100	99	97	94	91	104
f	106	102	108	105	103	98	94	91	108

FläktGroup India Pvt. Ltd. certifies that the 100JMC/25/4/6 series shown herein are Licensed to bear the AMCA Seal.

The ratings shown are based on tests and procedures performed in accordance with AMCA Publication 211 and AMCA Publication 311 and comply with the requirements of the AMCA Certified Ratings Program.

Performance certified is for Installation type D: Ducted Inlet- Ducted Outlet. Performance ratings do not include the effects of appurtenances (accessories)

The Sound Power Level ratings shown are in decibels, referred to 10^{-12} watts, calculated per AMCA International Standard 301. Values shown are for inlet LWi and LWiA sound power levels for Installation type D: Ducted Inlet-Ducted Outlet. Ratings include the effects of duct end correction.

The A-weighted sound ratings shown have been calculated per AMCA International Standard 301.



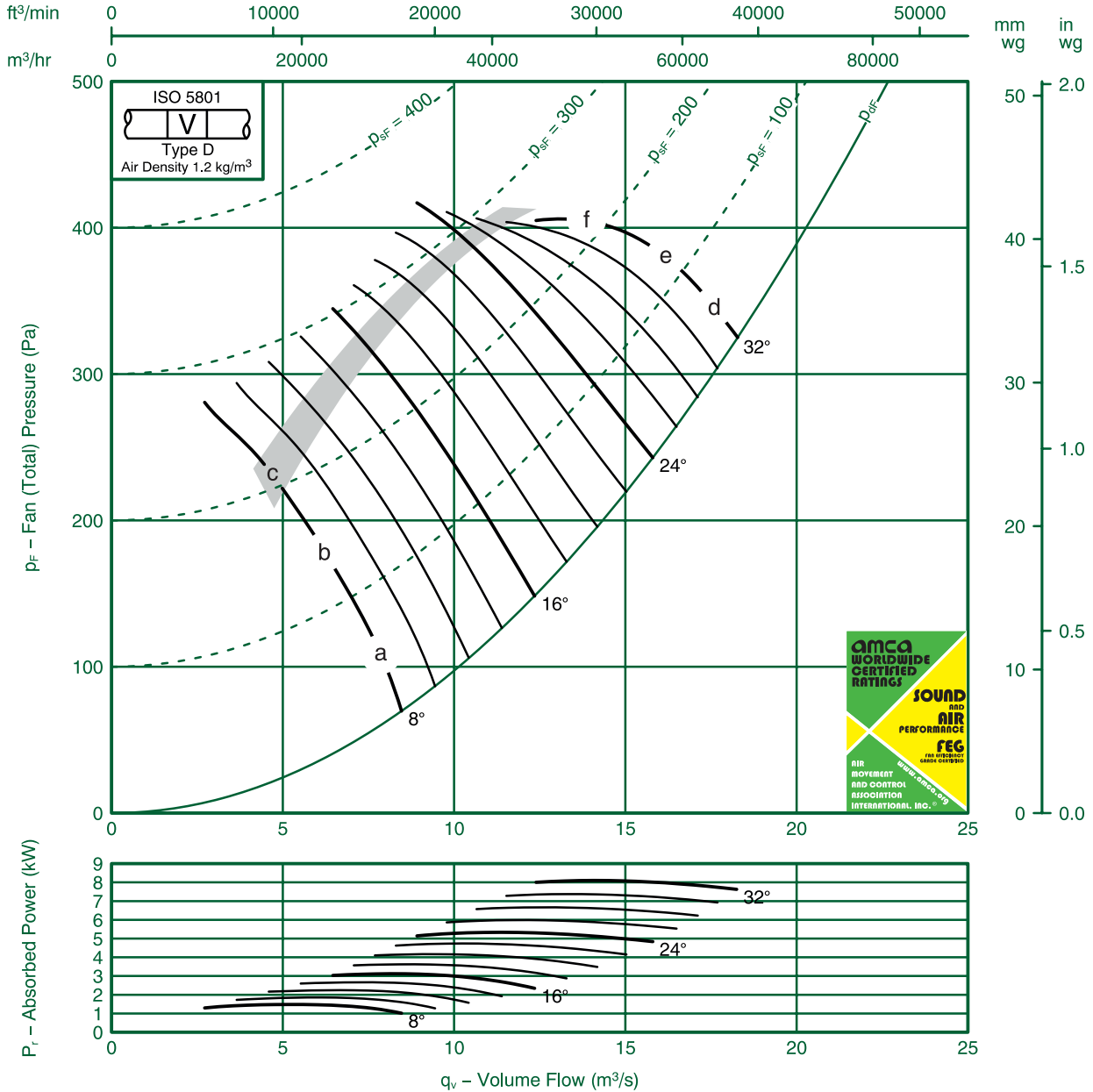
Fan Code: 100JMC/25/4/3/...

1000 mm 1440 rev/min 3 Blades 50 Hz



FEG 85

Performance certified is for installation type D-Ducted inlet, Ducted outlet. Performance ratings do not include the effects of appurtenances (accessories).



Ref	FULL OCTAVE BAND FREQUENCY								LwA
	63 Hz	125 Hz	250 Hz	500 Hz	1K Hz	2K Hz	4K Hz	8K Hz	
a	92	86	87	87	88	87	85	83	94
b	89	88	92	97	95	92	87	83	99
c	97	91	106	106	96	90	86	83	105
d	105	94	95	95	94	95	92	89	100
e	105	94	95	95	94	94	91	88	100
f	101	95	95	94	95	93	90	87	100

FläktGroup India Pvt. Ltd. certifies that the 100JMC/25/4/3 series shown herein are Licensed to bear the AMCA Seal.

The ratings shown are based on tests and procedures performed in accordance with AMCA Publication 211 and AMCA Publication 311 and comply with the requirements of the AMCA Certified Ratings Program.

Performance certified is for Installation type D: Ducted Inlet- Ducted Outlet. Performance ratings do not include the effects of appurtenances (accessories)

The Sound Power Level ratings shown are in decibels, referred to 10⁻¹² watts, calculated per AMCA International Standard 301. Values shown are for inlet LWi and LWiA sound power levels for Installation type D: Ducted Inlet-Ducted Outlet. Ratings include the effects of duct end correction.

The A-weighted sound ratings shown have been calculated per AMCA International Standard 301.



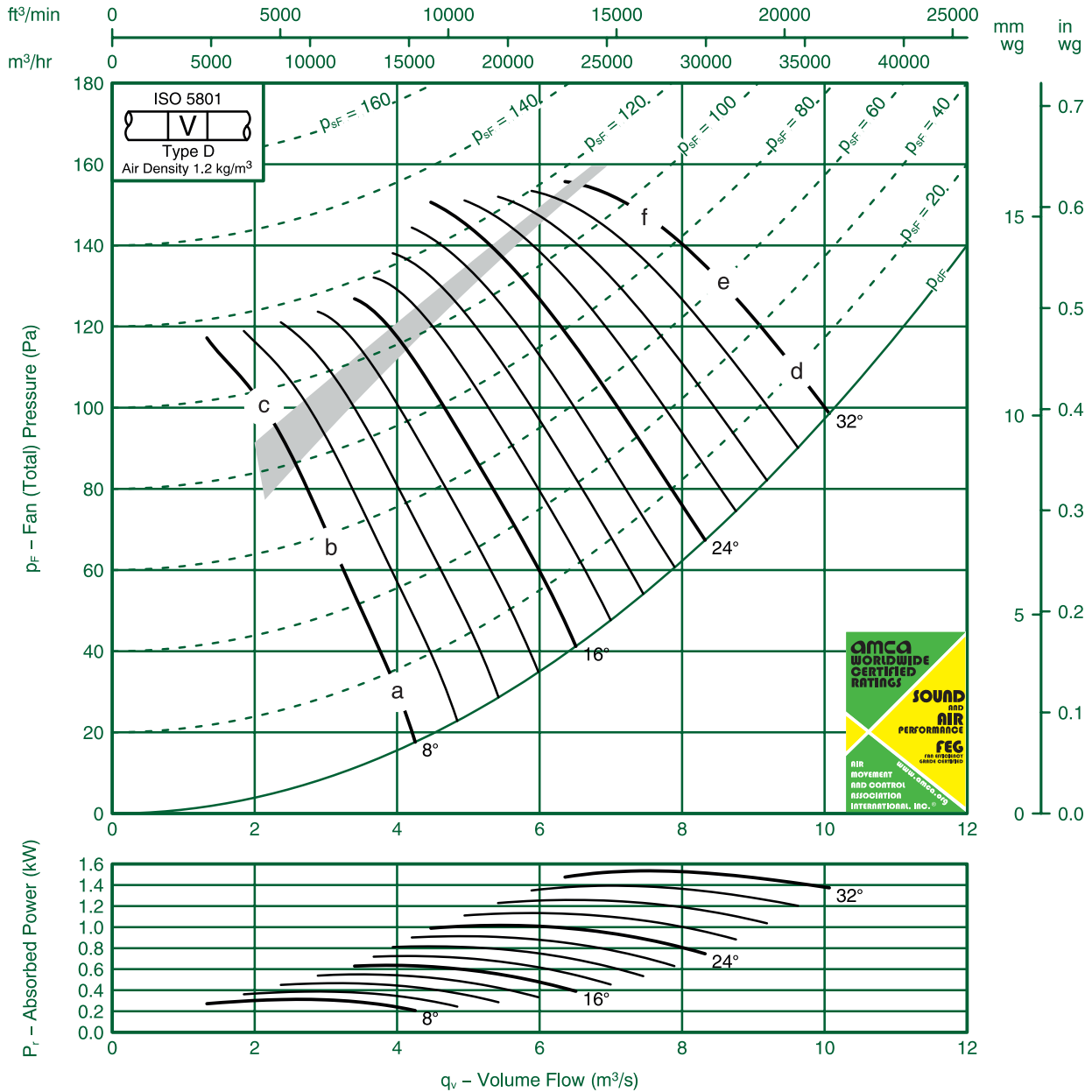
Fan Code: 100JMC/25/8/6/...

1000 mm 695 rev/min 6 Blades 50 Hz



FEG 80

Performance certified is for installation type D-Ducted inlet, Ducted outlet. Performance ratings do not include the effects of appurtenances (accessories).



Ref	FULL OCTAVE BAND FREQUENCY								LwA
	63 Hz	125 Hz	250 Hz	500 Hz	1K Hz	2K Hz	4K Hz	8K Hz	
a	73	75	76	76	75	72	70	70	80
b	74	78	84	82	78	74	69	64	83
c	78	90	95	87	79	72	67	62	89
d	76	83	84	82	80	77	74	71	85
e	77	83	84	83	81	77	74	71	86
f	84	90	89	87	82	78	75	71	88

FlaktGroup India Pvt. Ltd. certifies that the 100JMC/25/8/6 series shown herein are Licensed to bear the AMCA Seal.

The ratings shown are based on tests and procedures performed in accordance with AMCA Publication 211 and AMCA Publication 311 and comply with the requirements of the AMCA Certified Ratings Program.

Performance certified is for Installation type D: Ducted Inlet- Ducted Outlet. Performance ratings do not include the effects of appurtenances (accessories)

The Sound Power Level ratings shown are in decibels, referred to 10⁻¹² watts, calculated per AMCA International Standard 301. Values shown are for inlet LWi and LWiA sound power levels for Installation type D: Ducted Inlet-Ducted Outlet. Ratings include the effects of duct end correction.

The A-weighted sound ratings shown have been calculated per AMCA International Standard 301.



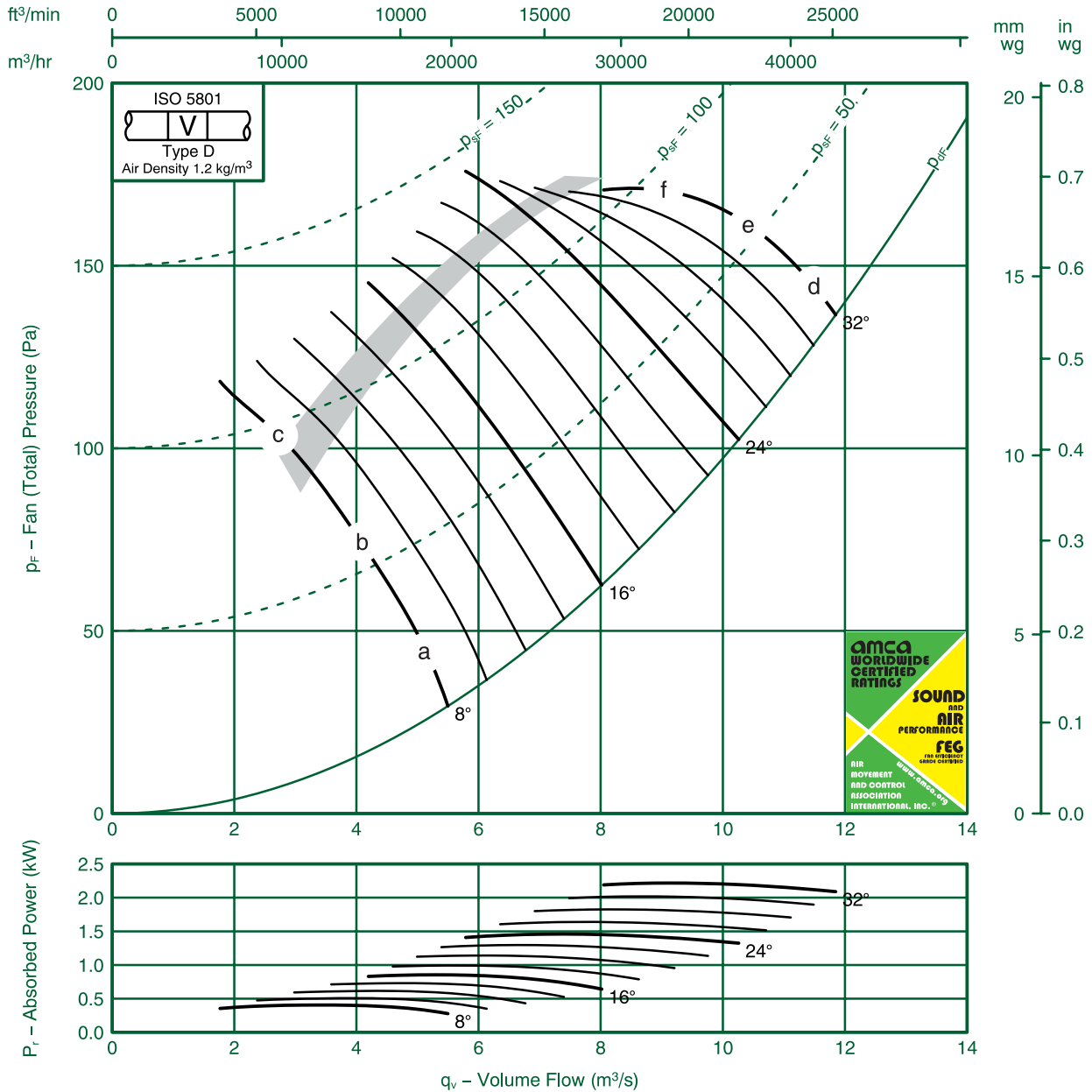
Fan Code: 100JMC/25/6/3/...

1000 mm 935 rev/min 3 Blades 50 Hz



FEG 85

Performance certified is for installation type D-Ducted inlet, Ducted outlet. Performance ratings do not include the effects of appurtenances (accessories).



Ref	FULL OCTAVE BAND FREQUENCY								LwA
	63 Hz	125 Hz	250 Hz	500 Hz	1K Hz	2K Hz	4K Hz	8K Hz	
a	83	77	78	78	78	76	74	73	83
b	80	81	86	86	84	79	75	73	88
c	90	94	100	92	83	77	74	72	94
d	96	85	86	85	85	84	81	77	90
e	96	85	85	85	85	82	79	76	89
f	92	86	85	86	85	82	79	76	89

FläktGroup India Pvt. Ltd. certifies that the 100JMC/25/6/3 series shown herein are Licensed to bear the AMCA Seal.

The ratings shown are based on tests and procedures performed in accordance with AMCA Publication 211 and AMCA Publication 311 and comply with the requirements of the AMCA Certified Ratings Program.

Performance certified is for Installation type D: Ducted Inlet- Ducted Outlet. Performance ratings do not include the effects of appurtenances (accessories)

The Sound Power Level ratings shown are in decibels, referred to 10^{-12} watts, calculated per AMCA International Standard 301. Values shown are for inlet LWi and LWiA sound power levels for Installation type D: Ducted Inlet-Ducted Outlet. Ratings include the effects of duct end correction.

The A-weighted sound ratings shown have been calculated per AMCA International Standard 301.

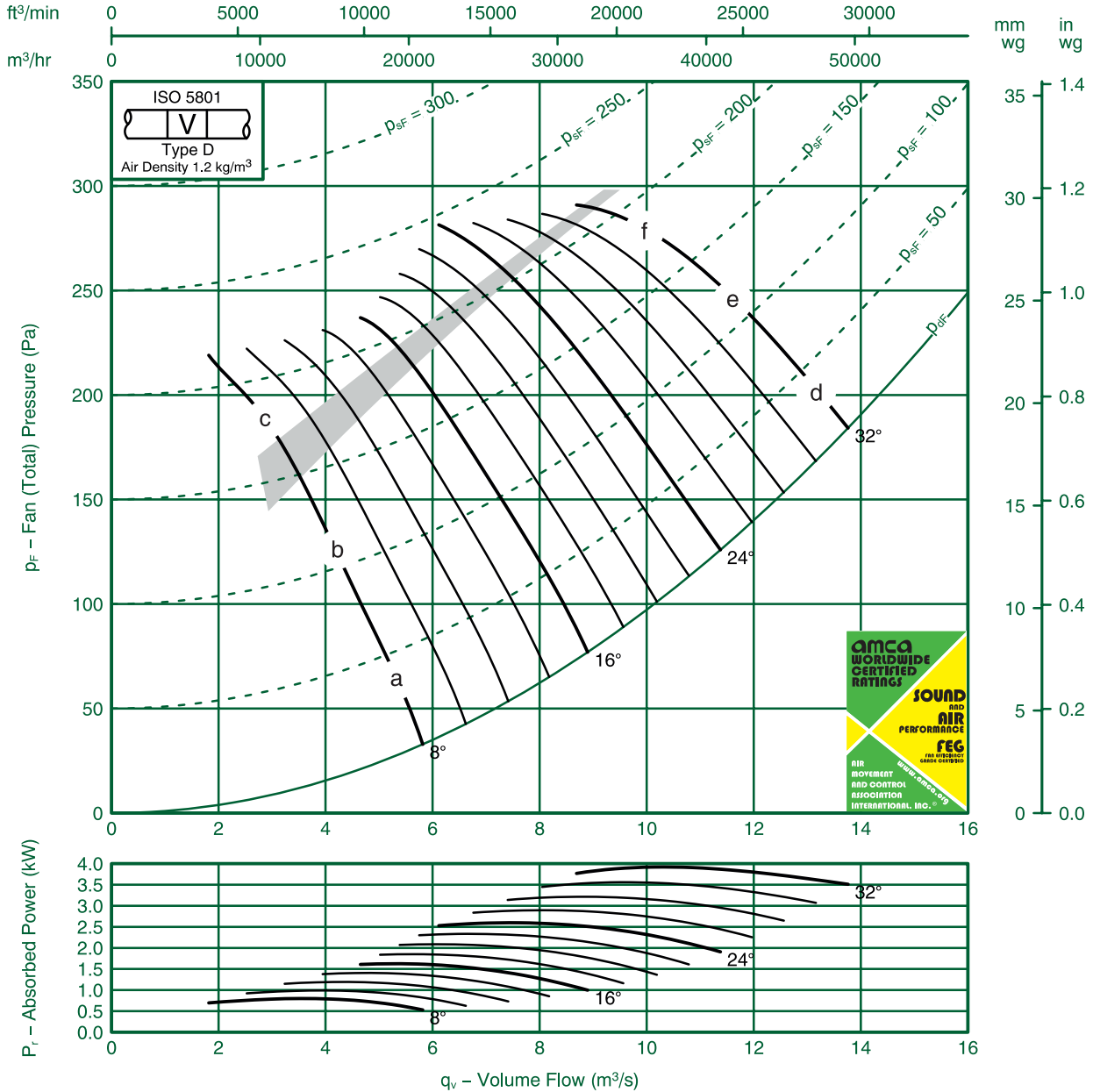


Fan Code: 100JMC/25/6/6/... 1000 mm 950 rev/min 6 Blades 50 Hz



FEG 80

Performance certified is for installation type D-Ducted inlet, Ducted outlet. Performance ratings do not include the effects of appurtenances (accessories).



Ref	FULL OCTAVE BAND FREQUENCY								LwA
	63 Hz	125 Hz	250 Hz	500 Hz	1K Hz	2K Hz	4K Hz	8K Hz	
a	86	77	83	83	84	81	78	76	88
b	84	80	90	97	89	83	77	72	96
c	85	82	103	104	89	82	75	72	102
d	97	73	95	91	88	86	83	80	94
e	96	75	94	92	90	86	82	80	95
f	96	88	101	95	93	86	81	80	98

FläktGroup India Pvt. Ltd. certifies that the 100JMC/25/6/6 series shown herein are Licensed to bear the AMCA Seal.

The ratings shown are based on tests and procedures performed in accordance with AMCA Publication 211 and AMCA Publication 311 and comply with the requirements of the AMCA Certified Ratings Program.

Performance certified is for Installation type D: Ducted Inlet- Ducted Outlet. Performance ratings do not include the effects of appurtenances (accessories)

The Sound Power Level ratings shown are in decibels, referred to 10^{-12} watts, calculated per AMCA International Standard 301. Values shown are for inlet LWi and LWiA sound power levels for Installation type D: Ducted Inlet-Ducted Outlet. Ratings include the effects of duct end correction.

The A-weighted sound ratings shown have been calculated per AMCA International Standard 301.



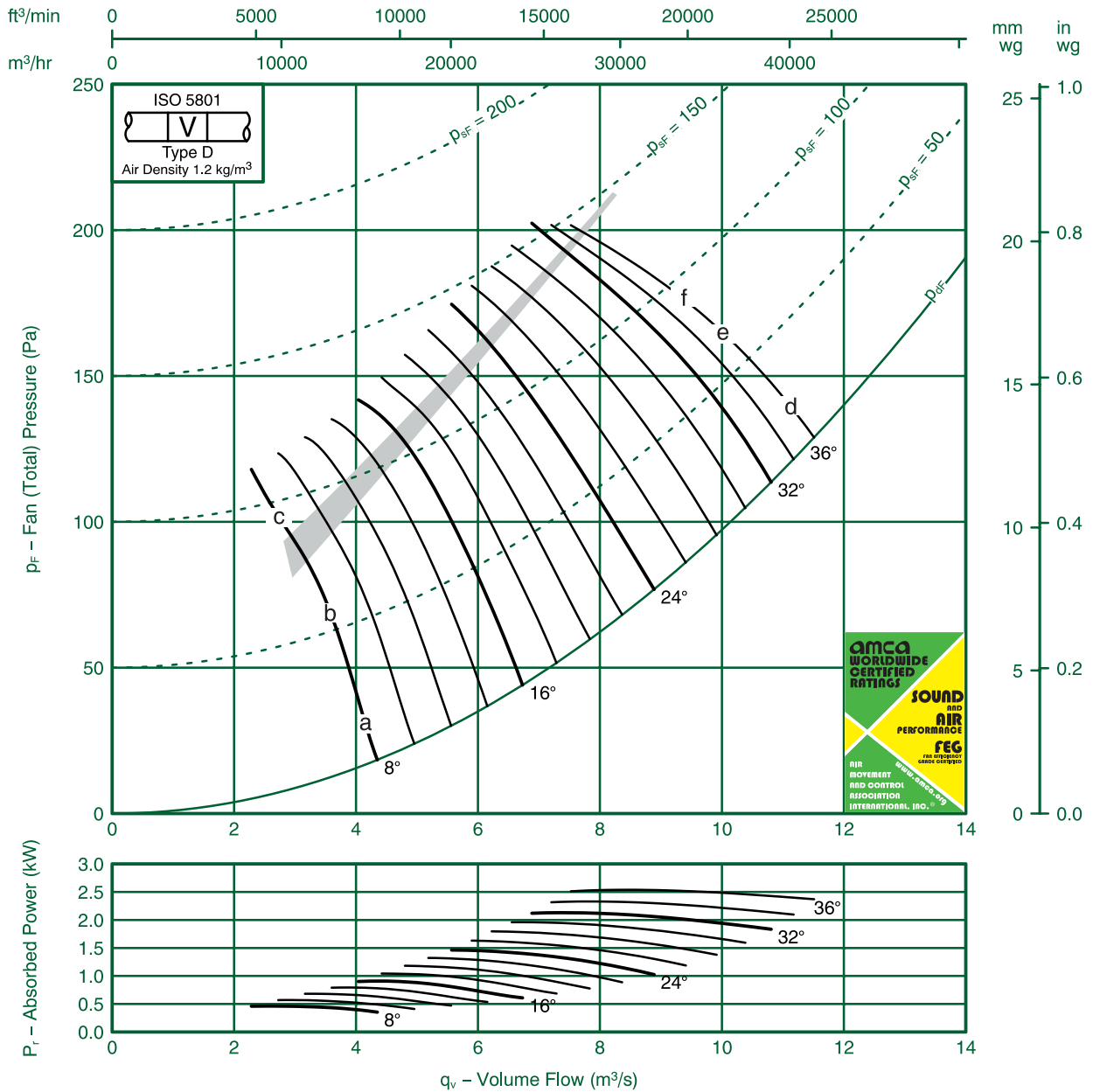
Fan Code: 100JMC/25/8/9/...

1000 mm 695 rev/min 9 Blades 50 Hz



FEG 75

Performance certified is for installation type D-Ducted inlet, Ducted outlet. Performance ratings do not include the effects of appurtenances (accessories).



Ref	FULL OCTAVE BAND FREQUENCY								LwA
	63 Hz	125 Hz	250 Hz	500 Hz	1K Hz	2K Hz	4K Hz	8K Hz	
a	75	78	78	80	77	73	68	61	82
b	74	76	79	83	80	74	67	60	84
c	74	76	81	83	78	71	65	58	83
d	83	84	83	82	78	74	71	68	84
e	82	82	82	81	78	74	71	68	83
f	81	82	82	81	77	73	71	68	83

FläktGroup India Pvt. Ltd. certifies that the 100JMC/25/8/9 series shown herein are Licensed to bear the AMCA Seal.

The ratings shown are based on tests and procedures performed in accordance with AMCA Publication 211 and AMCA Publication 311 and comply with the requirements of the AMCA Certified Ratings Program.

Performance certified is for Installation type D: Ducted Inlet- Ducted Outlet. Performance ratings do not include the effects of appurtenances (accessories)

The Sound Power Level ratings shown are in decibels, referred to 10^{-12} watts, calculated per AMCA International Standard 301. Values shown are for inlet LWi and LWiA sound power levels for Installation type D: Ducted Inlet-Ducted Outlet. Ratings include the effects of duct end correction.

The A-weighted sound ratings shown have been calculated per AMCA International Standard 301.



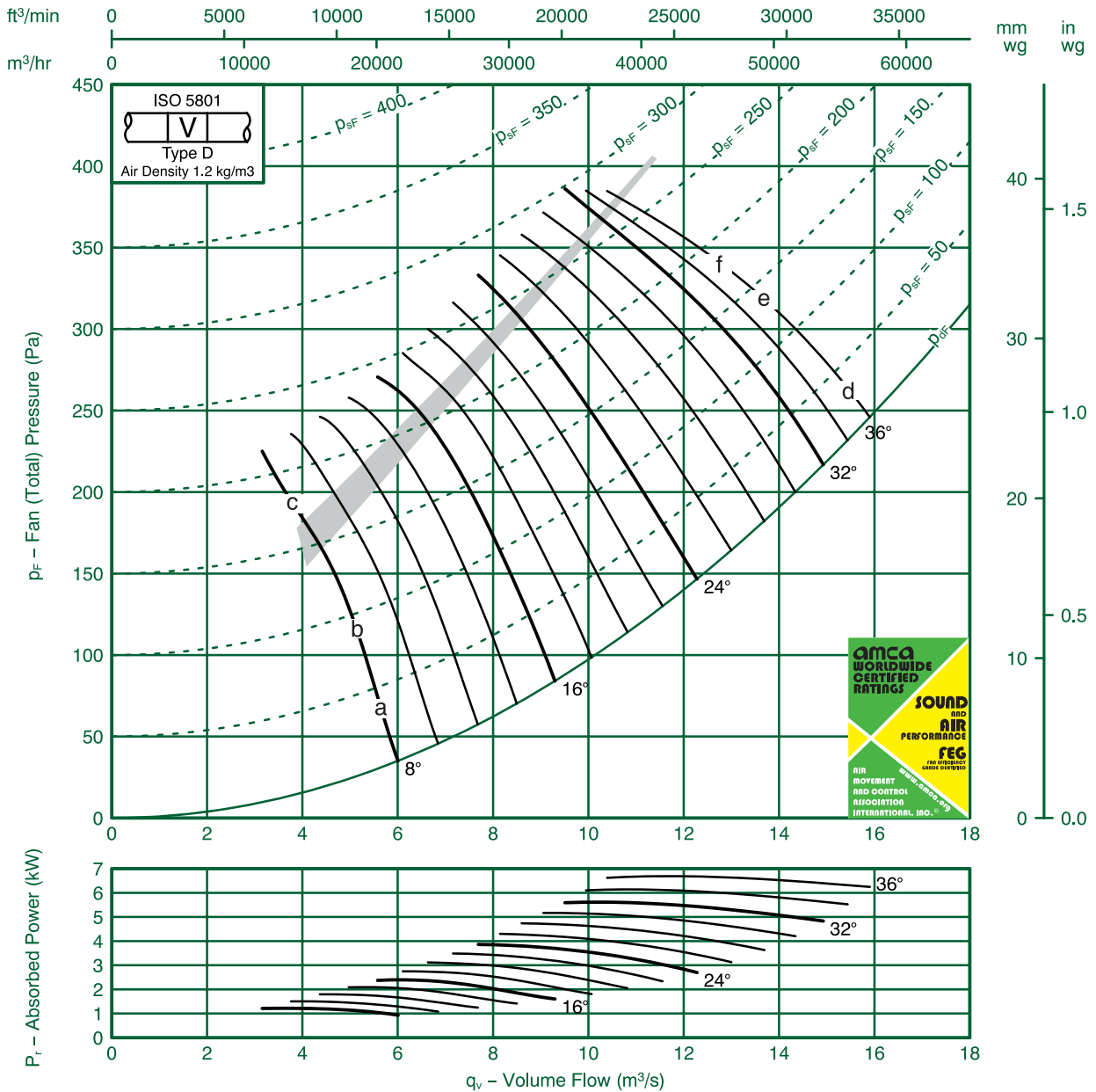
Fan Code: 100JMC/25/6/9/...

1000 mm 960 rev/min 9 Blades 50 Hz



FEG 75

Performance certified is for installation type D-Ducted inlet, Ducted outlet. Performance ratings do not include the effects of appurtenances (accessories).



Ref	FULL OCTAVE BAND FREQUENCY								LwA
	63 Hz	125 Hz	250 Hz	500 Hz	1K Hz	2K Hz	4K Hz	8K Hz	
a	80	85	84	86	87	81	78	71	90
b	80	82	83	89	91	84	77	70	93
c	81	81	86	91	89	81	75	68	92
d	89	91	91	90	88	82	79	76	92
e	89	89	89	89	87	82	79	77	91
f	88	89	89	88	87	82	79	76	91

FläktGroup India Pvt. Ltd. certifies that the 100JMC/25/6/9 series shown herein are Licensed to bear the AMCA Seal.

The ratings shown are based on tests and procedures performed in accordance with AMCA Publication 211 and AMCA Publication 311 and comply with the requirements of the AMCA Certified Ratings Program.

Performance certified is for Installation type D: Ducted Inlet- Ducted Outlet. Performance ratings do not include the effects of appurtenances (accessories)

The Sound Power Level ratings shown are in decibels, referred to 10⁻¹² watts, calculated per AMCA International Standard 301. Values shown are for inlet LWi and LWiA sound power levels for Installation type D: Ducted Inlet-Ducted Outlet. Ratings include the effects of duct end correction.

The A-weighted sound ratings shown have been calculated per AMCA International Standard 301.



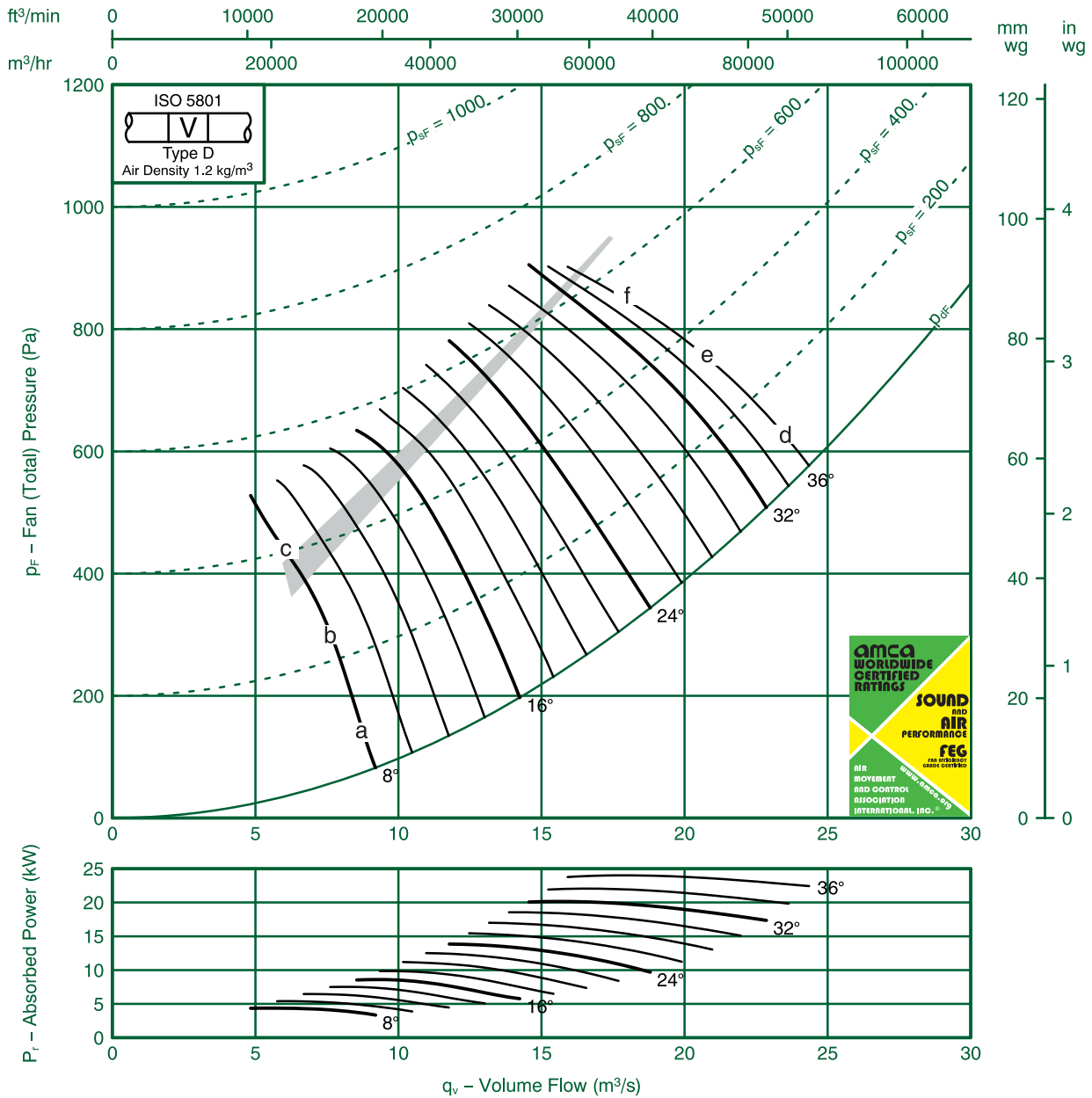
Fan Code: 100JMC/25/4/9/...

1000 mm 1470 rev/min 9 Blades 50 Hz



FEQ 75

Performance certified is for installation type D-Ducted inlet, Ducted outlet. Performance ratings do not include the effects of appurtenances (accessories).



Ref	FULL OCTAVE BAND FREQUENCY								LwA
	63 Hz	125 Hz	250 Hz	500 Hz	1K Hz	2K Hz	4K Hz	8K Hz	
a	89	91	94	94	96	94	89	85	100
b	90	90	92	95	99	97	91	84	103
c	91	91	92	97	99	95	88	82	102
d	98	99	100	100	99	95	90	87	103
e	98	98	99	99	98	94	90	87	102
f	97	97	98	98	97	94	90	87	101

FläktGroup India Pvt. Ltd. certifies that the 100JMC/25/4/9 series shown herein are Licensed to bear the AMCA Seal.

The ratings shown are based on tests and procedures performed in accordance with AMCA Publication 211 and AMCA Publication 311 and comply with the requirements of the AMCA Certified Ratings Program.

Performance certified is for Installation type D: Ducted Inlet- Ducted Outlet. Performance ratings do not include the effects of appurtenances (accessories)

The Sound Power Level ratings shown are in decibels, referred to 10⁻¹² watts, calculated per AMCA International Standard 301. Values shown are for inlet LWi and LWiA sound power levels for Installation type D: Ducted Inlet-Ducted Outlet. Ratings include the effects of duct end correction.

The A-weighted sound ratings shown have been calculated per AMCA International Standard 301.



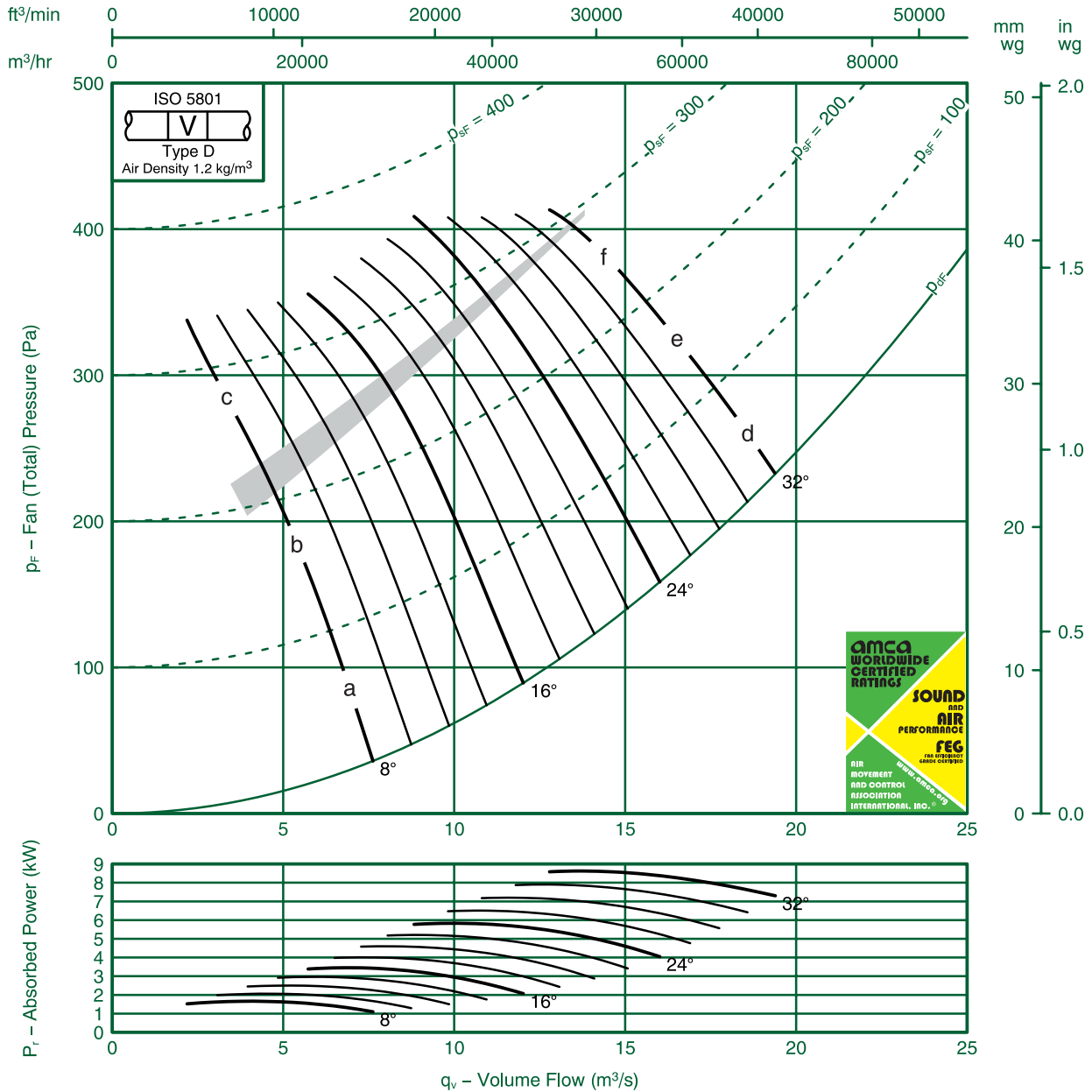
Fan Code: 112JMC/40/6/6/...

1120 mm 960 rev/min 6 Blades 50 Hz



FEG 71

Performance certified is for installation type D-Ducted inlet, Ducted outlet. Performance ratings do not include the effects of appurtenances (accessories).



Ref	FULL OCTAVE BAND FREQUENCY								LwA
	63 Hz	125 Hz	250 Hz	500 Hz	1K Hz	2K Hz	4K Hz	8K Hz	
a	91	90	90	92	89	83	79	74	93
b	93	92	93	92	88	82	76	71	93
c	97	92	89	87	85	81	76	72	90
d	100	95	93	94	87	84	82	80	94
e	98	94	92	95	89	85	83	81	96
f	97	95	95	96	92	87	85	82	97

FläktGroup India Pvt. Ltd. certifies that the 112JMC/40/6/6 series shown herein are Licensed to bear the AMCA Seal.

The ratings shown are based on tests and procedures performed in accordance with AMCA Publication 211 and AMCA Publication 311 and comply with the requirements of the AMCA Certified Ratings Program.

Performance certified is for Installation type D: Ducted Inlet- Ducted Outlet. Performance ratings do not include the effects of appurtenances (accessories)

The Sound Power Level ratings shown are in decibels, referred to 10^{-12} watts, calculated per AMCA International Standard 301. Values shown are for inlet LWi and LWiA sound power levels for Installation type D: Ducted Inlet-Ducted Outlet. Ratings include the effects of duct end correction.

The A-weighted sound ratings shown have been calculated per AMCA International Standard 301.



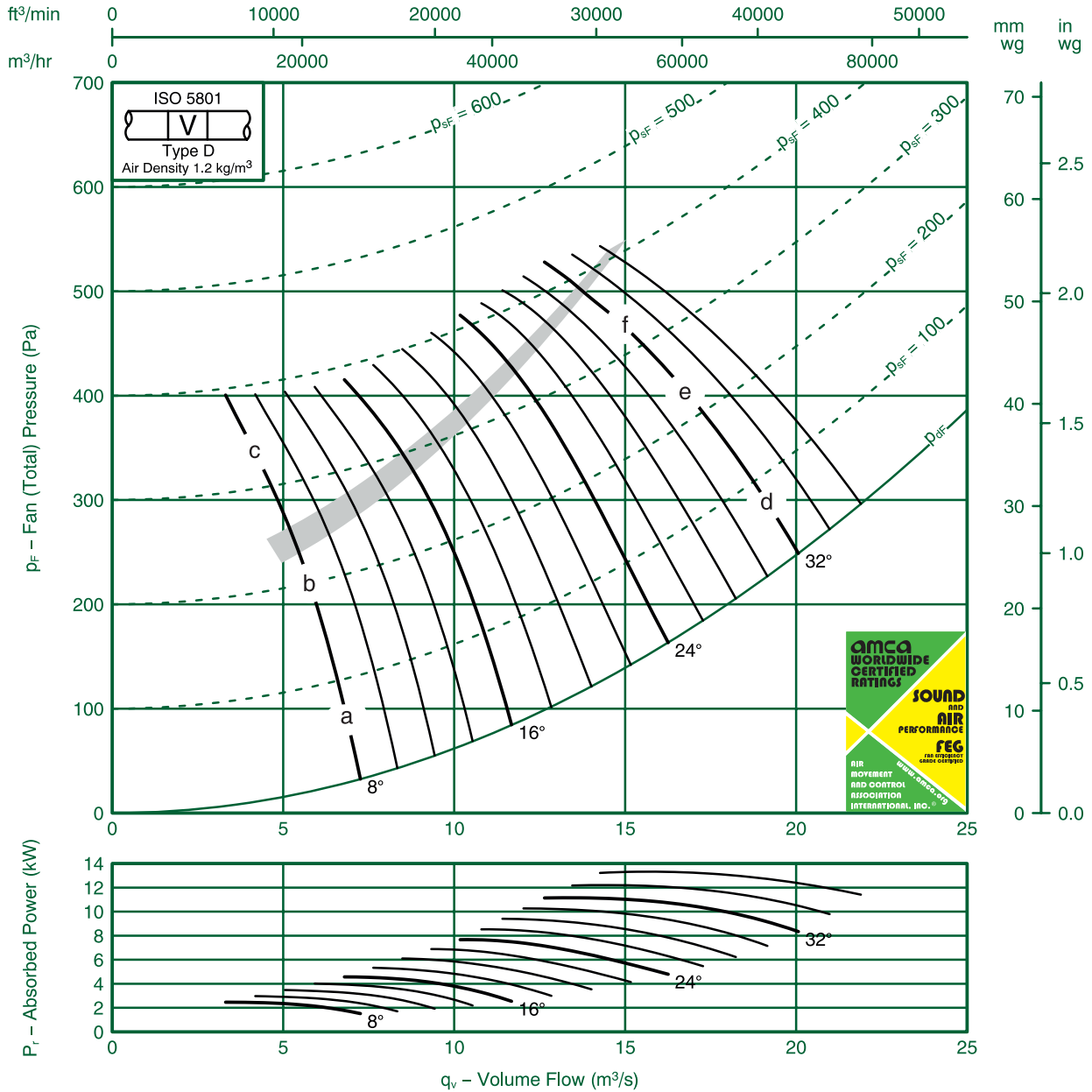
Fan Code: 112JMC/40/6/9/...

1120 mm 960 rev/min 9 Blades 50 Hz



FEG 71

Performance certified is for installation type D-Ducted inlet, Ducted outlet. Performance ratings do not include the effects of appurtenances (accessories).



Ref	FULL OCTAVE BAND FREQUENCY								LwA
	63 Hz	125 Hz	250 Hz	500 Hz	1K Hz	2K Hz	4K Hz	8K Hz	
a	88	93	92	96	91	84	80	75	96
b	88	97	92	90	87	82	77	73	92
c	85	93	87	85	83	81	77	76	89
d	93	96	93	93	88	85	83	79	94
e	93	95	95	92	89	85	83	79	95
f	95	97	98	95	92	88	84	81	97

FlaktGroup India Pvt. Ltd. certifies that the 112 JMC/40/6/9 series shown herein are Licensed to bear the AMCA Seal.

The ratings shown are based on tests and procedures performed in accordance with AMCA Publication 211 and AMCA Publication 311 and comply with the requirements of the AMCA Certified Ratings Program.

Performance certified is for Installation type D: Ducted Inlet- Ducted Outlet. Performance ratings do not include the effects of appurtenances (accessories)

The Sound Power Level ratings shown are in decibels, referred to 10^{-12} watts, calculated per AMCA International Standard 301. Values shown are for inlet LWi and LWiA sound power levels for Installation type D: Ducted Inlet-Ducted Outlet. Ratings include the effects of duct end correction.

The A-weighted sound ratings shown have been calculated per AMCA International Standard 301.



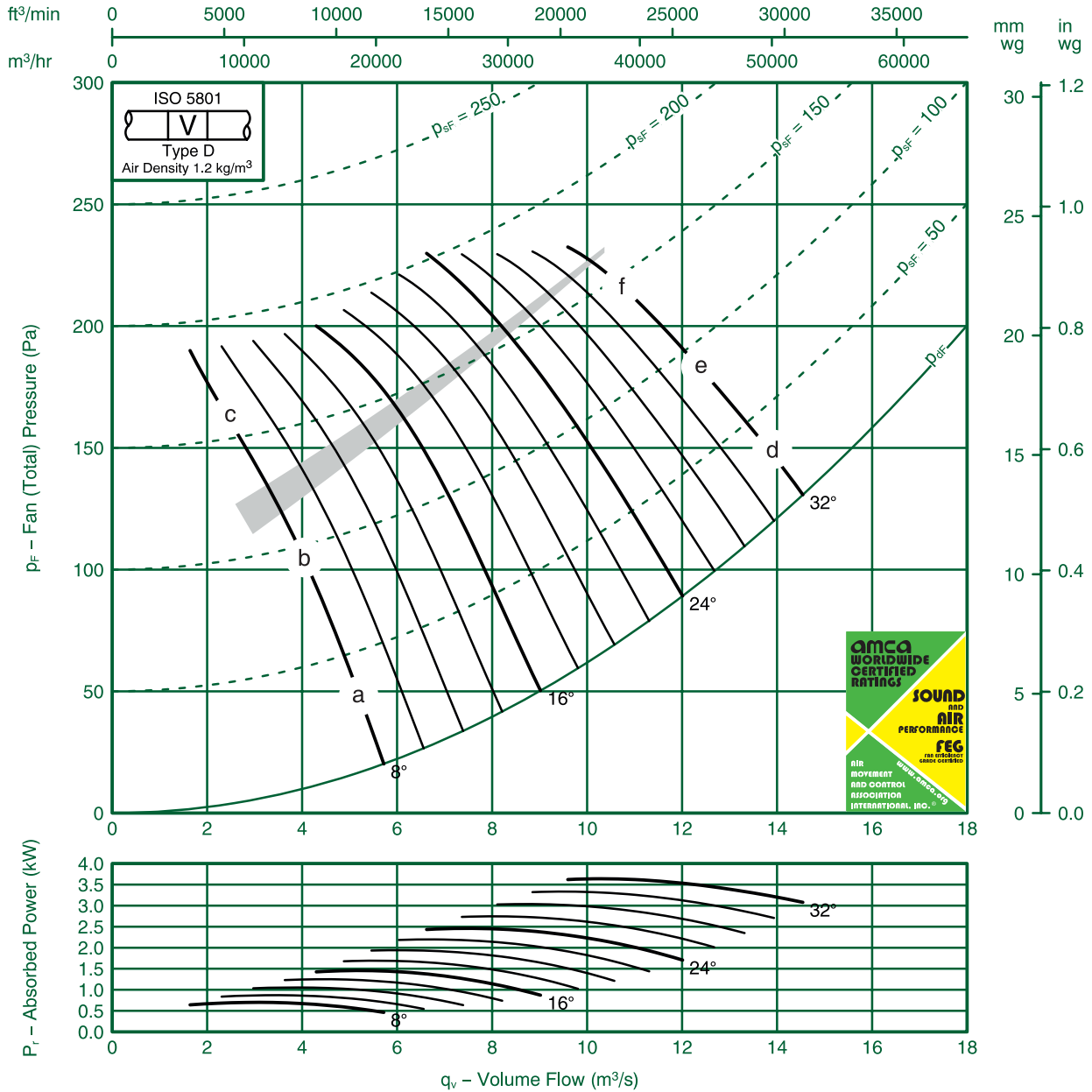
Fan Code: 112JMC/40/8/6/...

1120 mm 720 rev/min 6 Blades 50 Hz



FEG 71

Performance certified is for installation type D-Ducted inlet, Ducted outlet. Performance ratings do not include the effects of appurtenances (accessories).



Ref	FULL OCTAVE BAND FREQUENCY								LwA
	63 Hz	125 Hz	250 Hz	500 Hz	1K Hz	2K Hz	4K Hz	8K Hz	
a	85	84	85	87	81	74	71	65	87
b	87	85	86	86	80	73	68	62	86
c	90	84	81	80	78	73	69	64	83
d	92	88	87	85	80	77	75	73	86
e	90	87	87	86	81	78	76	74	88
f	90	89	90	88	84	80	78	75	90

FläktGroup India Pvt. Ltd. certifies that the 112JMC/40/8/6 series shown herein are Licensed to bear the AMCA Seal.

The ratings shown are based on tests and procedures performed in accordance with AMCA Publication 211 and AMCA Publication 311 and comply with the requirements of the AMCA Certified Ratings Program.

Performance certified is for Installation type D: Ducted Inlet- Ducted Outlet. Performance ratings do not include the effects of appurtenances (accessories)

The Sound Power Level ratings shown are in decibels, referred to 10⁻¹² watts, calculated per AMCA International Standard 301. Values shown are for inlet LWi and LWiA sound power levels for Installation type D: Ducted Inlet-Ducted Outlet. Ratings include the effects of duct end correction.

The A-weighted sound ratings shown have been calculated per AMCA International Standard 301.



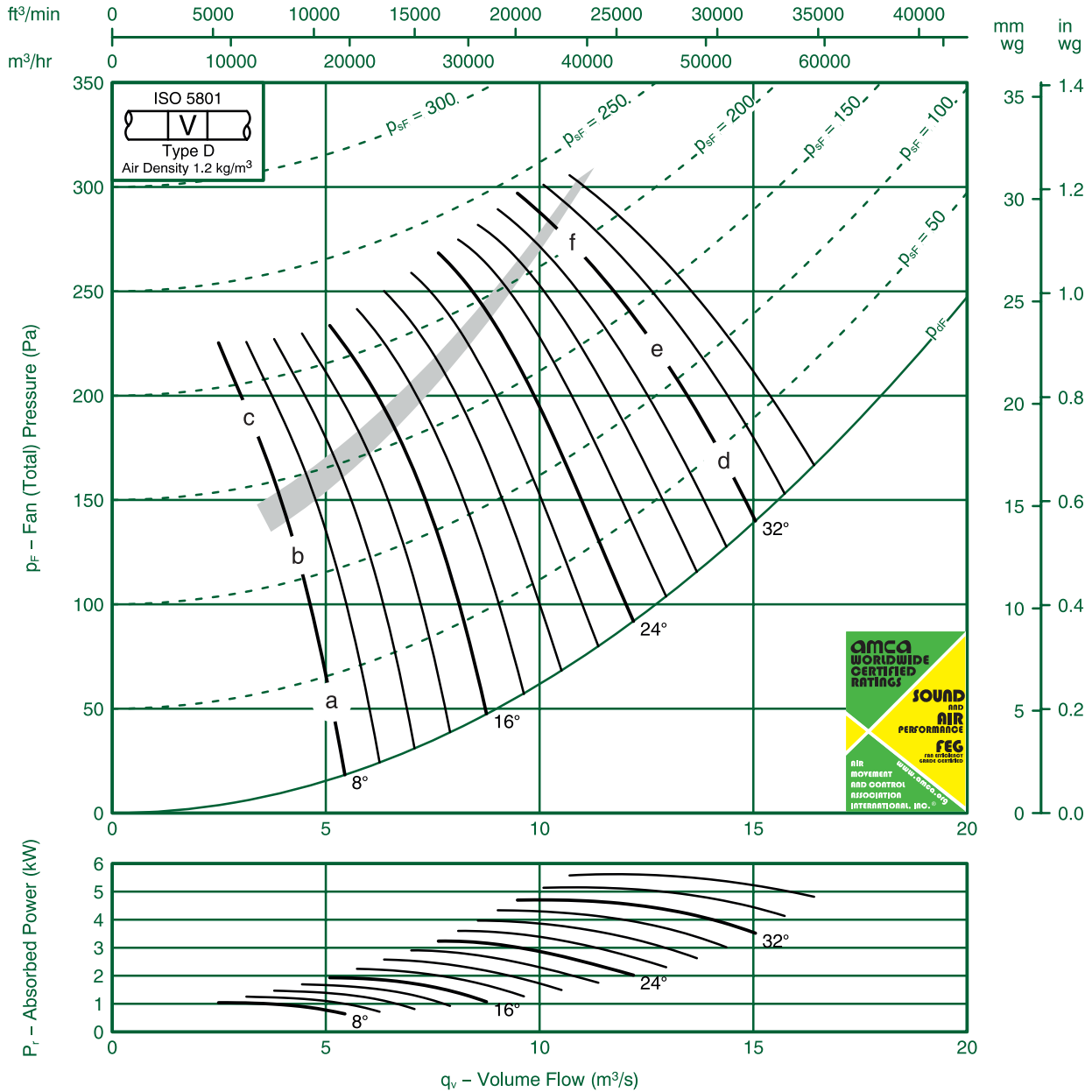
Fan Code: 112JMC/40/8/9/...

1120 mm 720 rev/min 9 Blades 50 Hz



FEG 71

Performance certified is for installation type D-Ducted inlet, Ducted outlet. Performance ratings do not include the effects of appurtenances (accessories).



Ref	FULL OCTAVE BAND FREQUENCY								LwA
	63 Hz	125 Hz	250 Hz	500 Hz	1K Hz	2K Hz	4K Hz	8K Hz	
a	82	89	86	91	83	74	72	66	90
b	82	95	83	82	79	74	69	65	85
c	79	91	79	79	77	74	69	68	82
d	88	89	87	84	80	78	75	71	87
e	87	89	88	85	81	78	75	71	87
f	92	94	93	90	86	81	77	74	91

FlaktGroup India Pvt. Ltd. certifies that the 112JMC/40/8/9 series shown herein are Licensed to bear the AMCA Seal.

The ratings shown are based on tests and procedures performed in accordance with AMCA Publication 211 and AMCA Publication 311 and comply with the requirements of the AMCA Certified Ratings Program.

Performance certified is for Installation type D: Ducted Inlet- Ducted Outlet. Performance ratings do not include the effects of appurtenances (accessories)

The Sound Power Level ratings shown are in decibels, referred to 10⁻¹² watts, calculated per AMCA International Standard 301. Values shown are for inlet LWi and LWiA sound power levels for Installation type D: Ducted Inlet-Ducted Outlet. Ratings include the effects of duct end correction.

The A-weighted sound ratings shown have been calculated per AMCA International Standard 301.



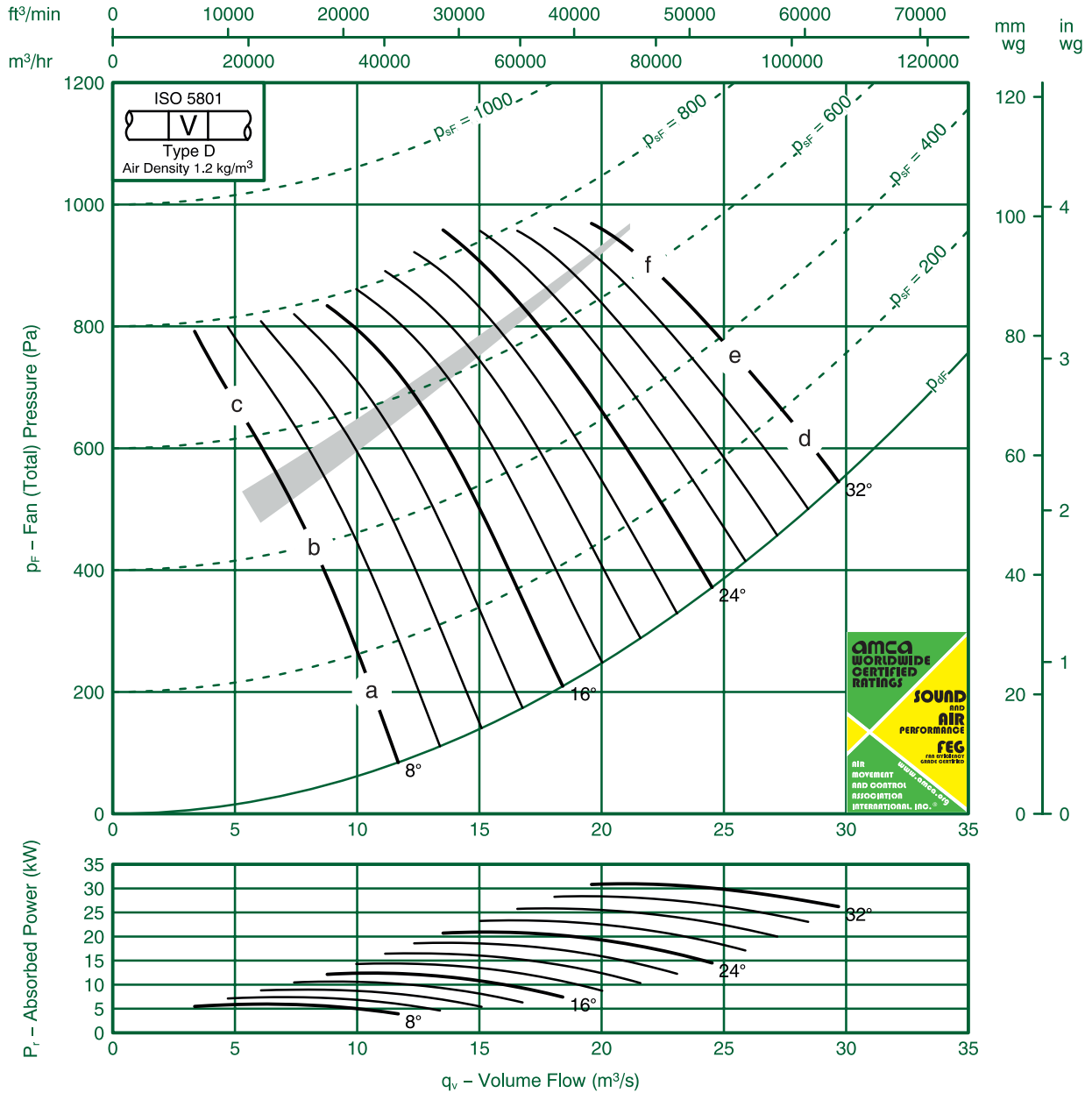
Fan Code: 112JMC/40/4/6/...

1120 mm 1470 rev/min 6 Blades 50 Hz



FEG 71

Performance certified is for installation type D-Ducted inlet, Ducted outlet. Performance ratings do not include the effects of appurtenances (accessories).



Ref	FULL OCTAVE BAND FREQUENCY								LwA
	63 Hz	125 Hz	250 Hz	500 Hz	1K Hz	2K Hz	4K Hz	8K Hz	
a	100	100	99	100	100	96	91	86	103
b	102	102	101	101	100	95	89	83	104
c	106	104	100	97	95	93	89	84	101
d	110	107	104	102	100	95	93	91	105
e	108	106	103	103	102	97	94	92	106
f	107	106	104	105	104	99	96	93	108

FläktGroup India Pvt. Ltd. certifies that the 112JMC/40/4/6 series shown herein are Licensed to bear the AMCA Seal.

The ratings shown are based on tests and procedures performed in accordance with AMCA Publication 211 and AMCA Publication 311 and comply with the requirements of the AMCA Certified Ratings Program.

Performance certified is for Installation type D: Ducted Inlet- Ducted Outlet. Performance ratings do not include the effects of appurtenances (accessories)

The Sound Power Level ratings shown are in decibels, referred to 10^{-12} watts, calculated per AMCA International Standard 301. Values shown are for inlet LWi and LWiA sound power levels for Installation type D: Ducted Inlet-Ducted Outlet. Ratings include the effects of duct end correction.

The A-weighted sound ratings shown have been calculated per AMCA International Standard 301.



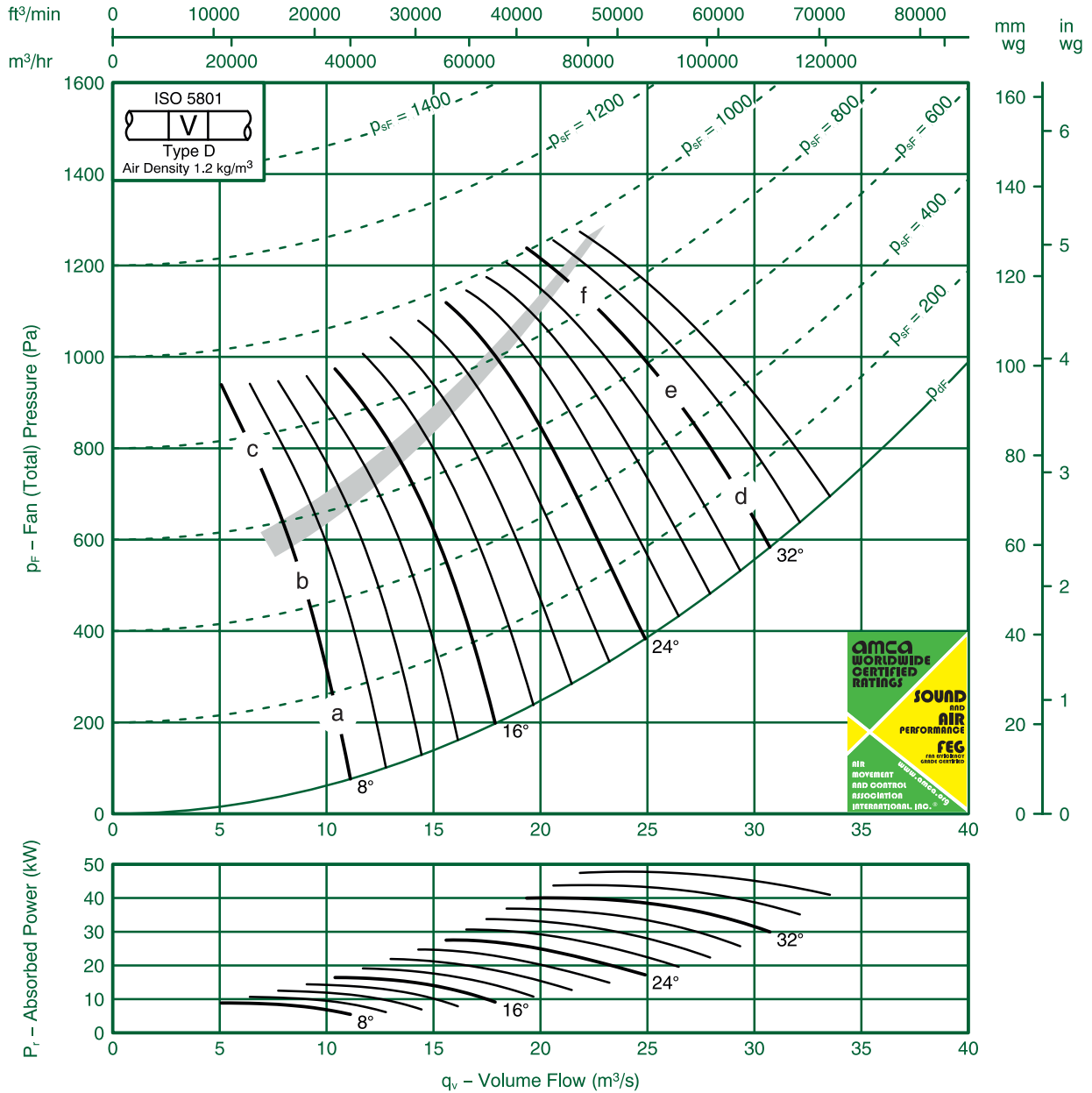
Fan Code: 112JMC/40/4/9/...

1120 mm 1470 rev/min 9 Blades 50 Hz



FEG 71

Performance certified is for installation type D-Ducted inlet, Ducted outlet. Performance ratings do not include the effects of appurtenances (accessories).



Ref	FULL OCTAVE BAND FREQUENCY								LwA
	63 Hz	125 Hz	250 Hz	500 Hz	1K Hz	2K Hz	4K Hz	8K Hz	
a	97	99	102	103	103	97	91	87	106
b	97	101	104	101	99	95	90	85	104
c	94	97	99	96	94	92	89	86	99
d	102	103	105	102	100	96	93	90	105
e	102	103	104	103	100	97	94	91	105
f	107	108	109	109	105	101	96	92	110

FlaktGroup India Pvt. Ltd. certifies that the 112JMC/40/4/9 series shown herein are Licensed to bear the AMCA Seal.

The ratings shown are based on tests and procedures performed in accordance with AMCA Publication 211 and AMCA Publication 311 and comply with the requirements of the AMCA Certified Ratings Program.

Performance certified is for Installation type D: Ducted Inlet- Ducted Outlet. Performance ratings do not include the effects of appurtenances (accessories)

The Sound Power Level ratings shown are in decibels, referred to 10^{-12} watts, calculated per AMCA International Standard 301. Values shown are for inlet LWi and LWiA sound power levels for Installation type D: Ducted Inlet-Ducted Outlet. Ratings include the effects of duct end correction.

The A-weighted sound ratings shown have been calculated per AMCA International Standard 301.



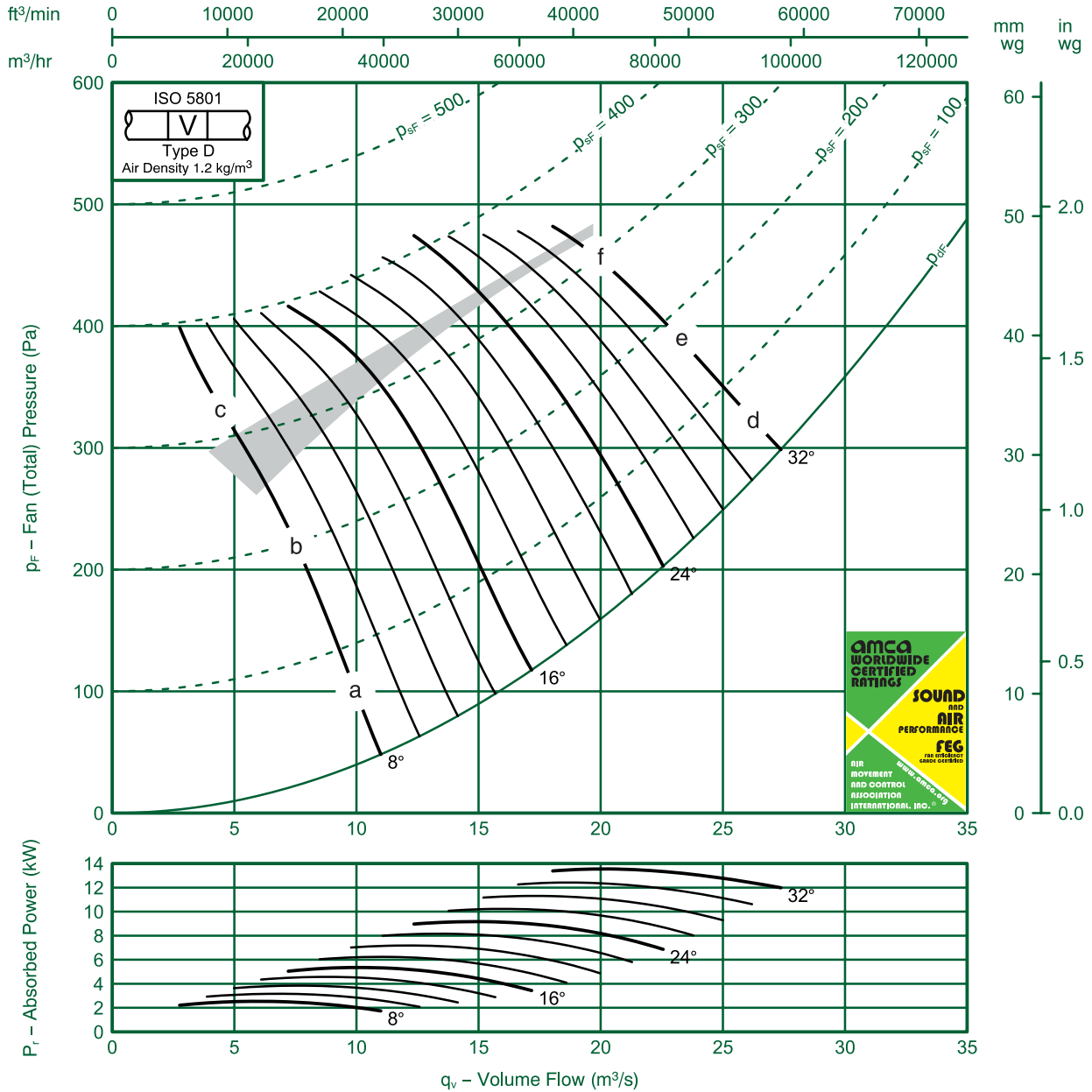
Fan Code: 125JMC/40/6/6/...

1250 mm 960 rev/min 6 Blades 50 Hz



FEG 75

Performance certified is for installation type D-Ducted inlet, Ducted outlet. Performance ratings do not include the effects of appurtenances (accessories).



Ref	FULL OCTAVE BAND FREQUENCY								LwA
	63 Hz	125 Hz	250 Hz	500 Hz	1K Hz	2K Hz	4K Hz	8K Hz	
a	91	88	93	97	94	87	82	78	98
b	96	97	95	92	88	84	79	74	94
c	97	89	86	84	85	83	80	74	90
d	104	97	94	91	89	87	84	81	95
e	103	97	94	92	91	88	86	83	96
f	101	96	94	96	94	91	86	85	99

FläktGroup India Pvt. Ltd. certifies that the 125JMC/40/6/6 series shown herein are Licensed to bear the AMCA Seal.

The ratings shown are based on tests and procedures performed in accordance with AMCA Publication 211 and AMCA Publication 311 and comply with the requirements of the AMCA Certified Ratings Program.

Performance certified is for Installation type D: Ducted Inlet- Ducted Outlet. Performance ratings do not include the effects of appurtenances (accessories)

The Sound Power Level ratings shown are in decibels, referred to 10^{-12} watts, calculated per AMCA International Standard 301. Values shown are for inlet LWi and LWiA sound power levels for Installation type D: Ducted Inlet-Ducted Outlet. Ratings include the effects of duct end correction.

The A-weighted sound ratings shown have been calculated per AMCA International Standard 301.



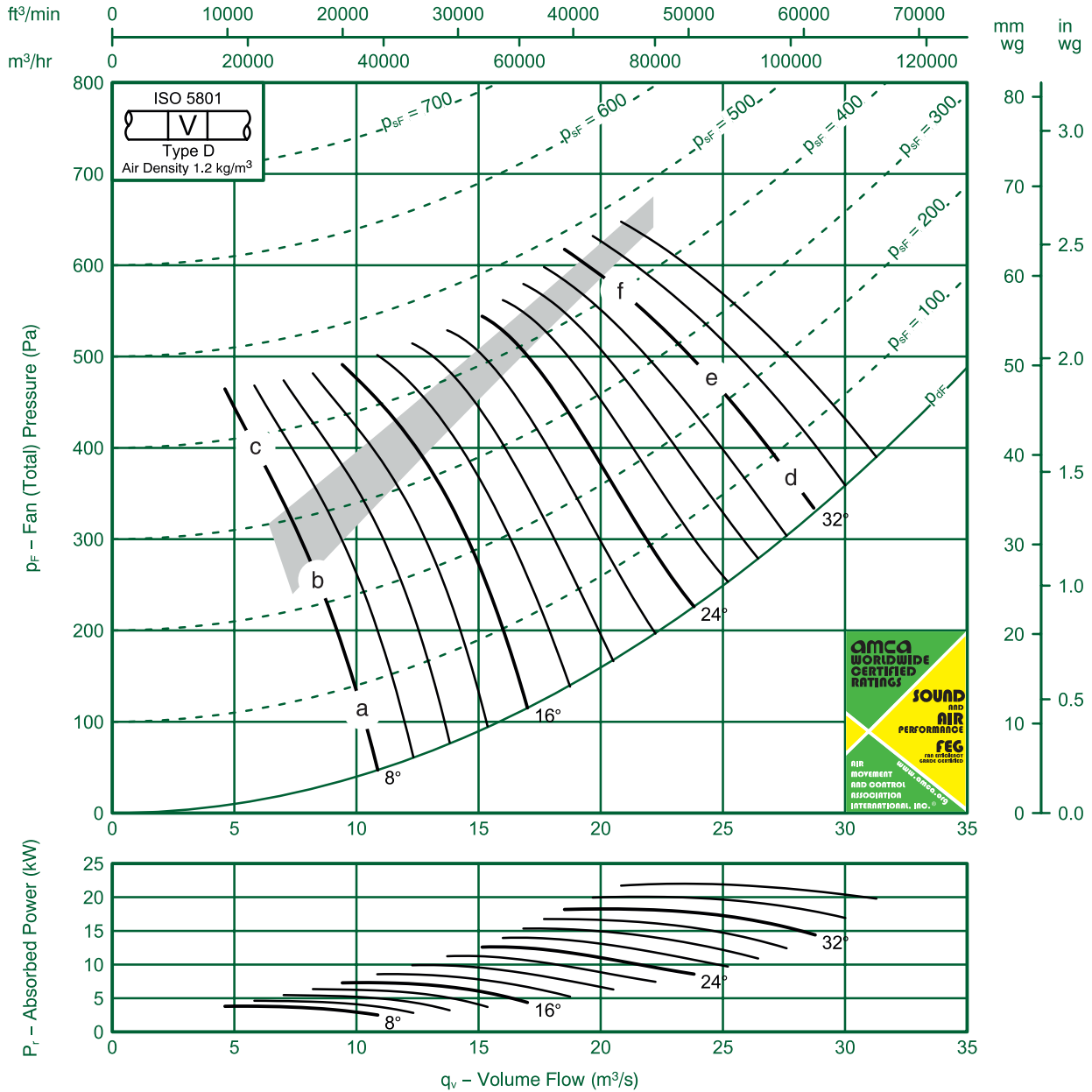
Fan Code: 125JMC/40/6/9/...

1250 mm 960 rev/min 9 Blades 50 Hz



FEG 71

Performance certified is for installation type D-Ducted inlet, Ducted outlet. Performance ratings do not include the effects of appurtenances (accessories).



Ref	FULL OCTAVE BAND FREQUENCY								LwA
	63 Hz	125 Hz	250 Hz	500 Hz	1K Hz	2K Hz	4K Hz	8K Hz	
a	86	89	92	98	95	87	84	78	99
b	87	96	95	97	91	85	81	75	97
c	87	106	90	86	85	84	78	72	93
d	96	100	96	93	91	88	86	81	96
e	96	97	94	93	91	88	87	85	97
f	97	97	98	98	95	92	88	86	100

FlaktGroup India Pvt. Ltd. certifies that the 125JMC/40/6/9 series shown herein are Licensed to bear the AMCA Seal.

The ratings shown are based on tests and procedures performed in accordance with AMCA Publication 211 and AMCA Publication 311 and comply with the requirements of the AMCA Certified Ratings Program.

Performance certified is for Installation type D: Ducted Inlet- Ducted Outlet. Performance ratings do not include the effects of appurtenances (accessories)

The Sound Power Level ratings shown are in decibels, referred to 10⁻¹² watts, calculated per AMCA International Standard 301. Values shown are for inlet LWi and LWiA sound power levels for Installation type D: Ducted Inlet-Ducted Outlet. Ratings include the effects of duct end correction.

The A-weighted sound ratings shown have been calculated per AMCA International Standard 301.



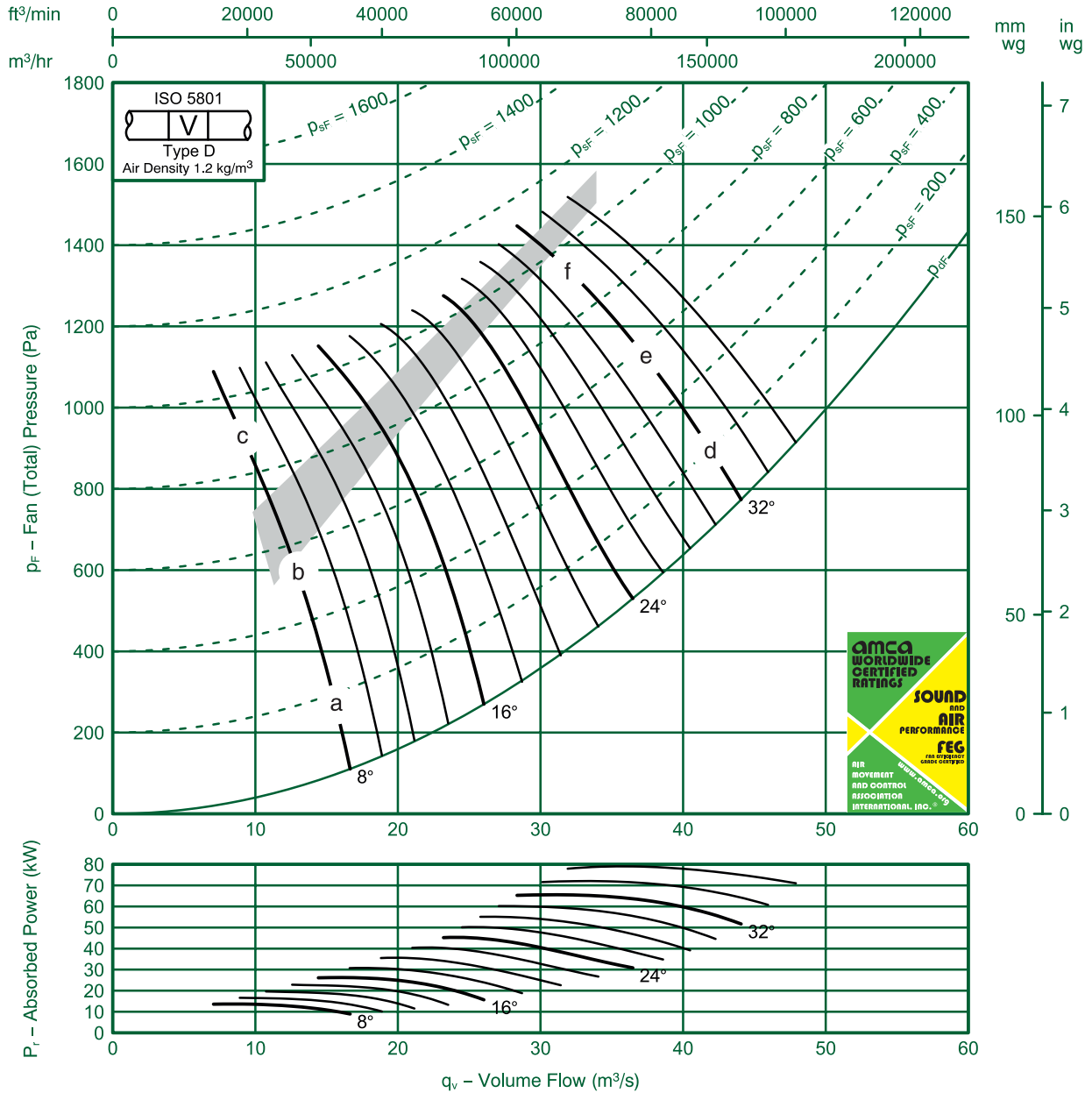
Fan Code: 125JMC/40/4/9/...

1250 mm 1470 rev/min 9 Blades 50 Hz



FEG 71

Performance certified is for installation type D-Ducted inlet, Ducted outlet. Performance ratings do not include the effects of appurtenances (accessories).



Ref	FULL OCTAVE BAND FREQUENCY								LwA
	63 Hz	125 Hz	250 Hz	500 Hz	1K Hz	2K Hz	4K Hz	8K Hz	
a	95	97	100	104	106	101	95	91	109
b	96	100	106	105	104	98	93	88	107
c	97	104	113	98	96	94	91	85	106
d	106	107	109	104	102	99	97	94	108
e	105	106	106	103	102	99	97	95	107
f	107	107	107	107	106	103	100	97	111

FläktGroup India Pvt. Ltd. certifies that the 125JMC/40/4/9 series shown herein are Licensed to bear the AMCA Seal.

The ratings shown are based on tests and procedures performed in accordance with AMCA Publication 211 and AMCA Publication 311 and comply with the requirements of the AMCA Certified Ratings Program.

Performance certified is for Installation type D: Ducted Inlet- Ducted Outlet. Performance ratings do not include the effects of appurtenances (accessories)

The Sound Power Level ratings shown are in decibels, referred to 10^{-12} watts, calculated per AMCA International Standard 301. Values shown are for inlet LWi and LWiA sound power levels for Installation type D: Ducted Inlet-Ducted Outlet. Ratings include the effects of duct end correction.

The A-weighted sound ratings shown have been calculated per AMCA International Standard 301.



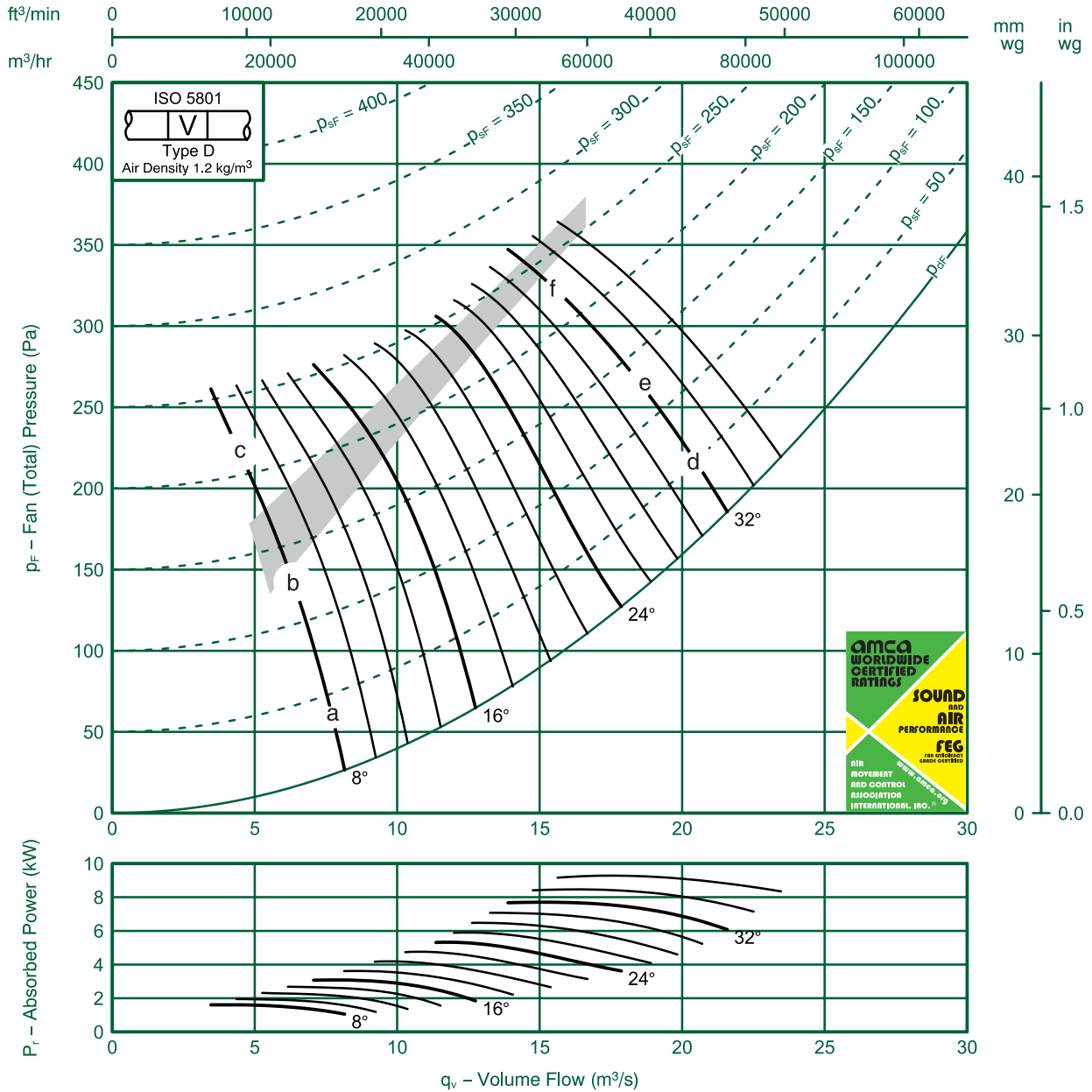
Fan Code: 125JMC/40/8/9/...

1250 mm 720 rev/min 9 Blades 50 Hz



FEG 71

Performance certified is for installation type D-Ducted inlet, Ducted outlet. Performance ratings do not include the effects of appurtenances (accessories).



Ref	FULL OCTAVE BAND FREQUENCY								LwA
	63 Hz	125 Hz	250 Hz	500 Hz	1K Hz	2K Hz	4K Hz	8K Hz	
a	84	87	94	87	77	77	69	78	93
b	81	93	88	91	82	77	73	66	90
c	81	107	78	79	79	77	69	63	92
d	90	95	89	85	84	80	79	74	89
e	90	92	86	86	84	80	80	78	89
f	91	91	92	91	87	84	80	79	93

FläktGroup India Pvt. Ltd. certifies that the 125JMC/40/8/9 series shown herein are Licensed to bear the AMCA Seal.

The ratings shown are based on tests and procedures performed in accordance with AMCA Publication 211 and AMCA Publication 311 and comply with the requirements of the AMCA Certified Ratings Program.

Performance certified is for Installation type D: Ducted Inlet- Ducted Outlet. Performance ratings do not include the effects of appurtenances (accessories)

The Sound Power Level ratings shown are in decibels, referred to 10^{-12} watts, calculated per AMCA International Standard 301. Values shown are for inlet LWi and LWiA sound power levels for Installation type D: Ducted Inlet-Ducted Outlet. Ratings include the effects of duct end correction.

The A-weighted sound ratings shown have been calculated per AMCA International Standard 301.



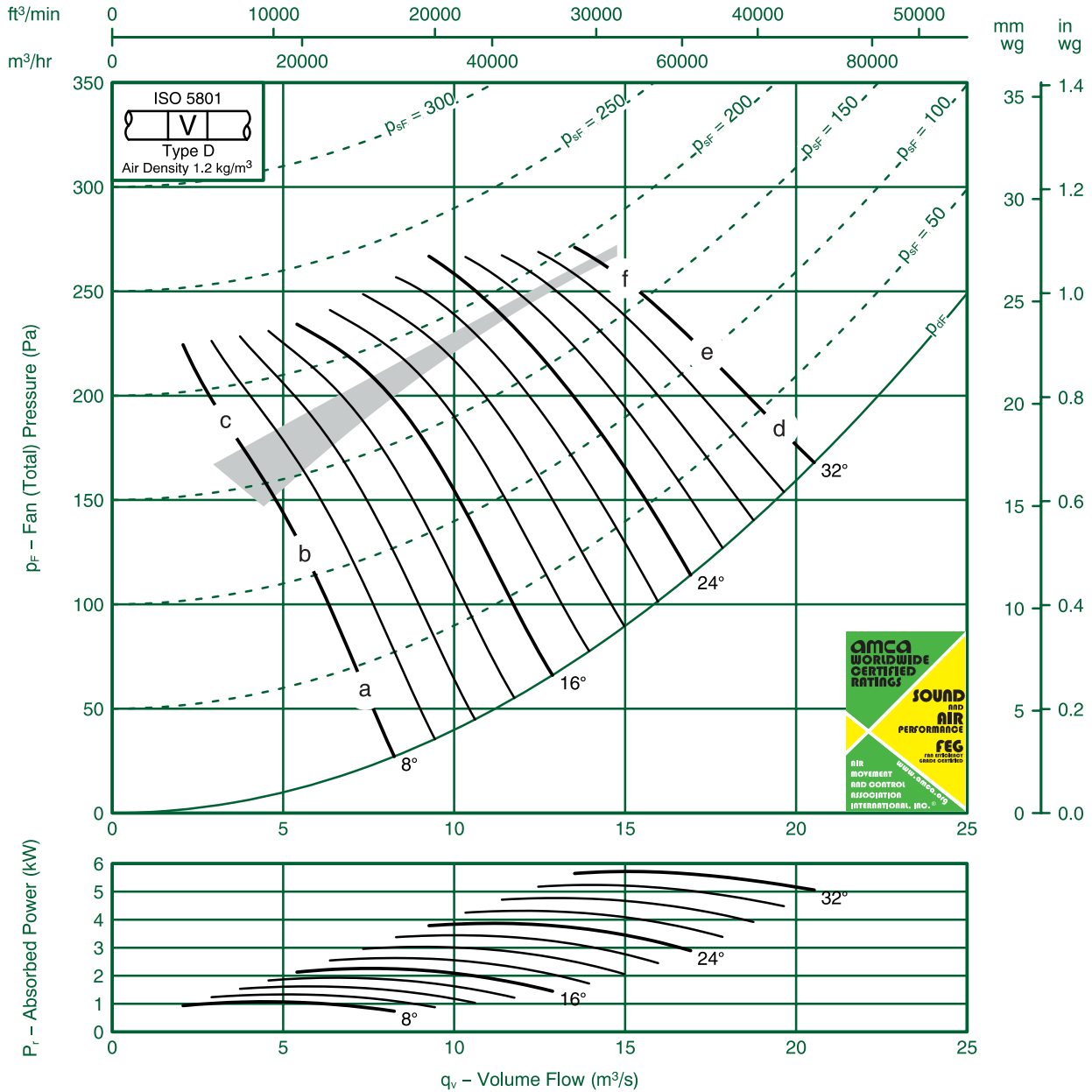
Fan Code: 125JMC/40/8/6/...

1250 mm 720 rev/min 6 Blades 50 Hz



FEG 75

Performance certified is for installation type D-Ducted inlet, Ducted outlet. Performance ratings do not include the effects of appurtenances (accessories).



Ref	FULL OCTAVE BAND FREQUENCY								LwA
	63 Hz	125 Hz	250 Hz	500 Hz	1K Hz	2K Hz	4K Hz	8K Hz	
a	83	84	89	89	84	78	74	70	90
b	91	90	88	84	80	76	71	66	86
c	87	81	79	78	78	76	71	65	82
d	97	88	86	83	82	80	76	74	88
e	97	88	87	85	84	81	79	76	89
f	95	87	87	91	86	83	78	78	92

FläktGroup India Pvt. Ltd. certifies that the 125JMC/40/8/6 series shown herein are Licensed to bear the AMCA Seal.

The ratings shown are based on tests and procedures performed in accordance with AMCA Publication 211 and AMCA Publication 311 and comply with the requirements of the AMCA Certified Ratings Program.

Performance certified is for Installation type D: Ducted Inlet- Ducted Outlet. Performance ratings do not include the effects of appurtenances (accessories)

The Sound Power Level ratings shown are in decibels, referred to 10^{-12} watts, calculated per AMCA International Standard 301. Values shown are for inlet LWi and LWiA sound power levels for Installation type D: Ducted Inlet-Ducted Outlet. Ratings include the effects of duct end correction.

The A-weighted sound ratings shown have been calculated per AMCA International Standard 301.



ISO 9001
FM 00155

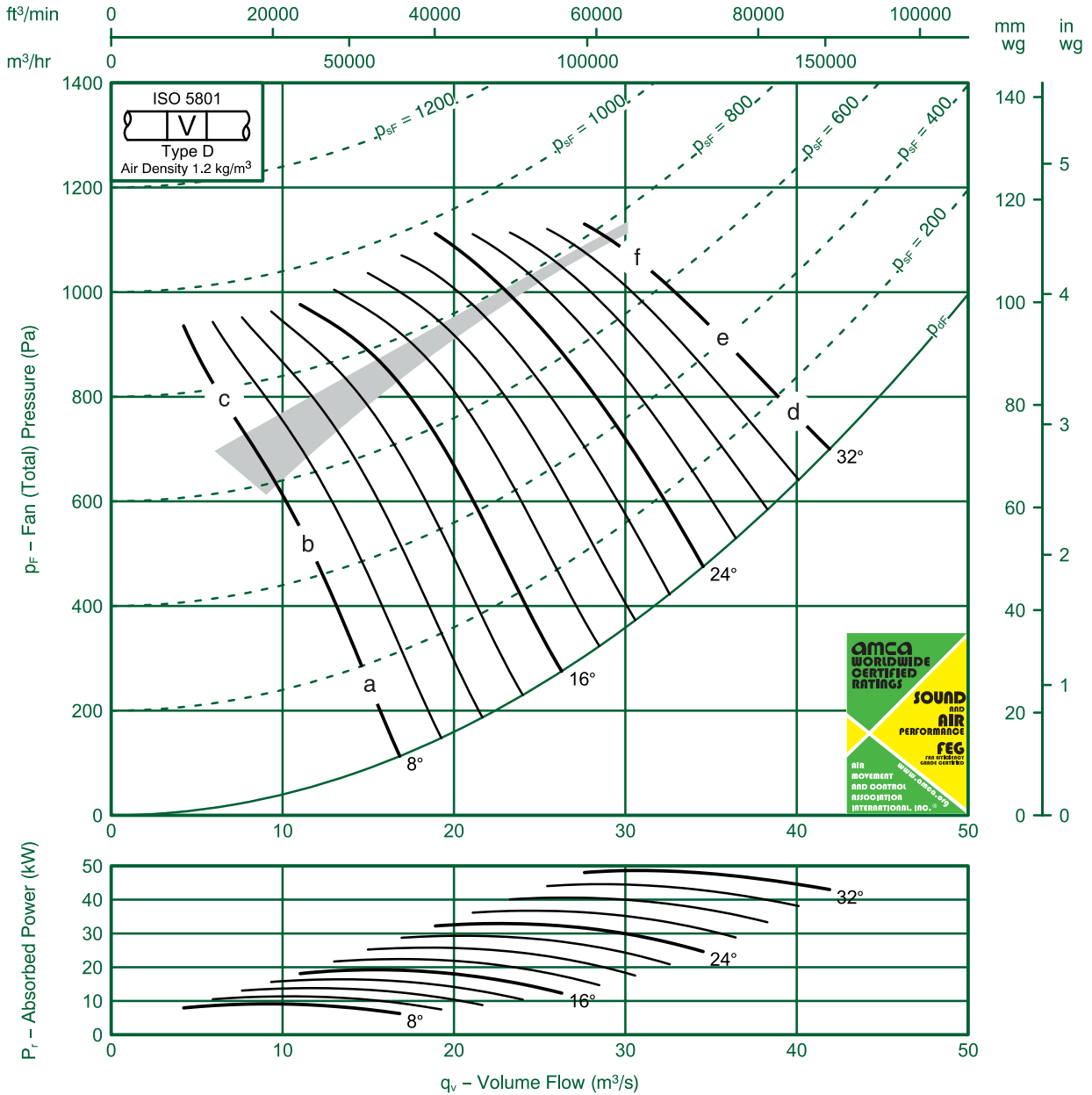
Fan Code: 125JMC/40/4/6/...

1250 mm 1470 rev/min 6 Blades 50 Hz

FläktGroup

FEG 75

Performance certified is for installation type D-Ducted inlet, Ducted outlet. Performance ratings do not include the effects of appurtenances (accessories).



Ref	FULL OCTAVE BAND FREQUENCY								LwA
	63 Hz	125 Hz	250 Hz	500 Hz	1K Hz	2K Hz	4K Hz	8K Hz	
a	100	99	100	104	105	100	94	89	108
b	106	107	107	104	100	96	91	86	106
c	107	103	96	93	93	93	91	87	99
d	113	110	105	103	100	97	95	92	106
e	113	110	105	102	101	99	97	94	107
f	110	108	104	104	105	102	98	95	109

FläktGroup India Pvt. Ltd. certifies that the 125JMC/40/4/6 series shown herein are Licensed to bear the AMCA Seal.

The ratings shown are based on tests and procedures performed in accordance with AMCA Publication 211 and AMCA Publication 311 and comply with the requirements of the AMCA Certified Ratings Program.

Performance certified is for Installation type D: Ducted Inlet- Ducted Outlet. Performance ratings do not include the effects of appurtenances (accessories)

The Sound Power Level ratings shown are in decibels, referred to 10^{-12} watts, calculated per AMCA International Standard 301. Values shown are for inlet LWi and LWiA sound power levels for Installation type D: Ducted Inlet-Ducted Outlet. Ratings include the effects of duct end correction.

The A-weighted sound ratings shown have been calculated per AMCA International Standard 301.



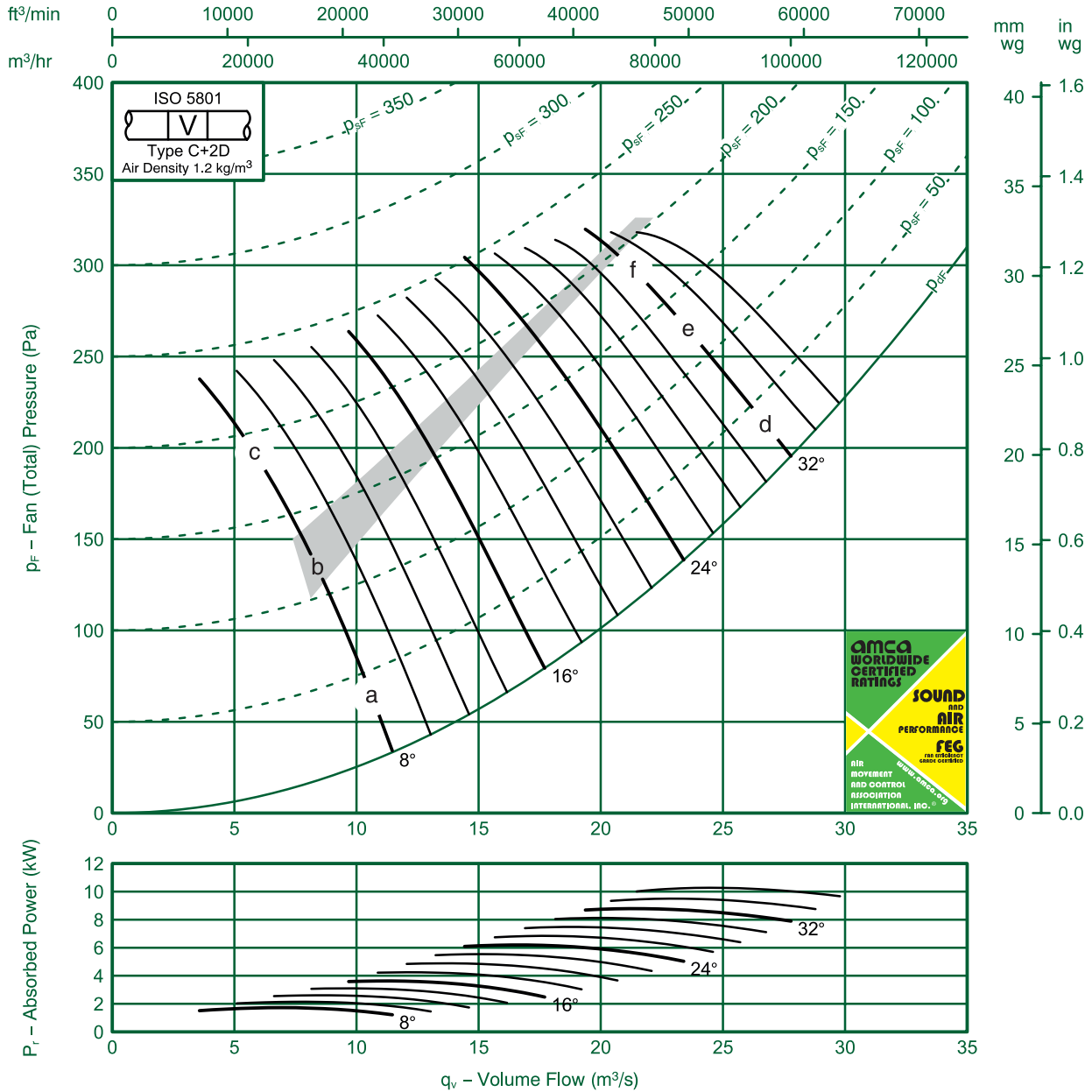
Fan Code: 140JMC/40/8/6/...

1400 mm 720 rev/min 6 Blades 50 Hz



FEG 75

Performance certified is for installation type C-Ducted inlet, Free outlet. Performance ratings do not include the effects of appurtenances (accessories).



Ref	FULL OCTAVE BAND FREQUENCY								LwA
	63 Hz	125 Hz	250 Hz	500 Hz	1K Hz	2K Hz	4K Hz	8K Hz	
a	86	86	91	92	89	82	77	73	93
b	89	93	95	91	88	81	76	70	93
c	96	102	95	85	83	80	76	70	91
d	96	92	92	91	90	89	83	82	95
e	99	100	98	95	92	87	83	80	97
f	101	105	102	98	94	86	83	79	100

FläktGroup India Pvt. Ltd. certifies that the 140JMC/40/8/6 series shown herein are Licensed to bear the AMCA Seal.

The ratings shown are based on tests and procedures performed in accordance with AMCA Publication 211 and AMCA Publication 311 and comply with the requirements of the AMCA Certified Ratings Program.

Performance certified is for Installation type C: Ducted Inlet-Free Outlet. Performance ratings do not include the effects of appurtenances (accessories)

The Sound Power Level ratings shown are in decibels, referred to 10^{-12} watts, calculated per AMCA International Standard 301. Values shown are for inlet LWi and LWiA sound power levels for Installation type C: Ducted Inlet-Free Outlet. Ratings include the effects of duct end correction.

The A-weighted sound ratings shown have been calculated per AMCA International Standard 301.



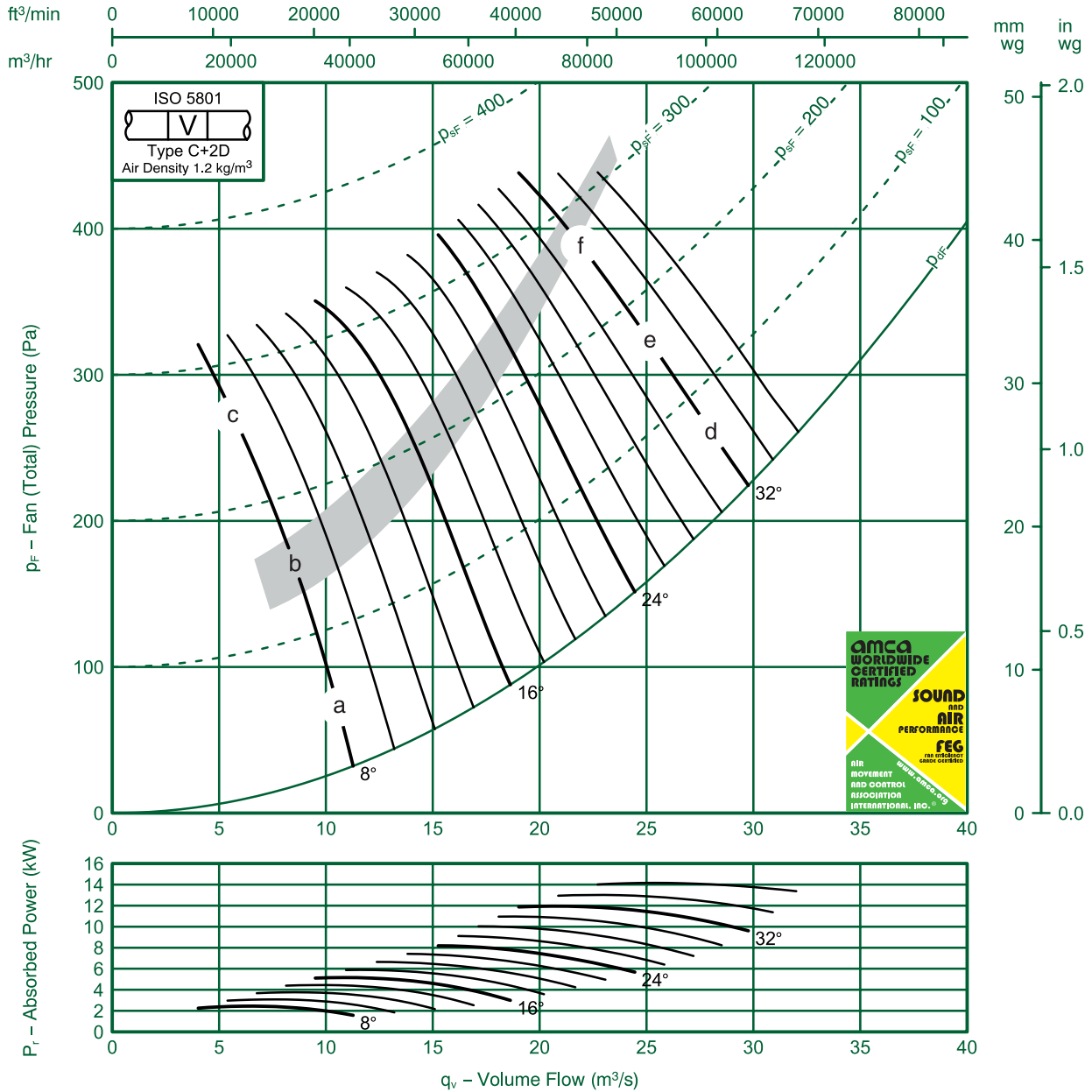
Fan Code: 140JMC/40/8/9/...

1400 mm 720 rev/min 9 Blades 50 Hz



FEG 80

Performance certified is for installation type C-Ducted inlet, Free outlet. Performance ratings do not include the effects of appurtenances (accessories).



Ref	FULL OCTAVE BAND FREQUENCY								LwA
	63 Hz	125 Hz	250 Hz	500 Hz	1K Hz	2K Hz	4K Hz	8K Hz	
a	84	88	92	95	91	83	81	73	95
b	87	94	96	92	88	81	77	71	93
c	87	99	86	80	80	77	73	69	87
d	93	90	83	86	88	87	84	83	93
e	103	100	97	95	93	89	84	82	98
f	113	110	112	104	97	90	84	80	106

FlaktGroup India Pvt. Ltd. certifies that the 140JMC/40/8/9 series shown herein are Licensed to bear the AMCA Seal.

The ratings shown are based on tests and procedures performed in accordance with AMCA Publication 211 and AMCA Publication 311 and comply with the requirements of the AMCA Certified Ratings Program.

Performance certified is for Installation type C: Ducted Inlet-Free Outlet. Performance ratings do not include the effects of appurtenances (accessories)

The Sound Power Level ratings shown are in decibels, referred to 10^{-12} watts, calculated per AMCA International Standard 301. Values shown are for inlet LWi and LWiA sound power levels for Installation type C: Ducted Inlet-Free Outlet. Ratings include the effects of duct end correction.

The A-weighted sound ratings shown have been calculated per AMCA International Standard 301.



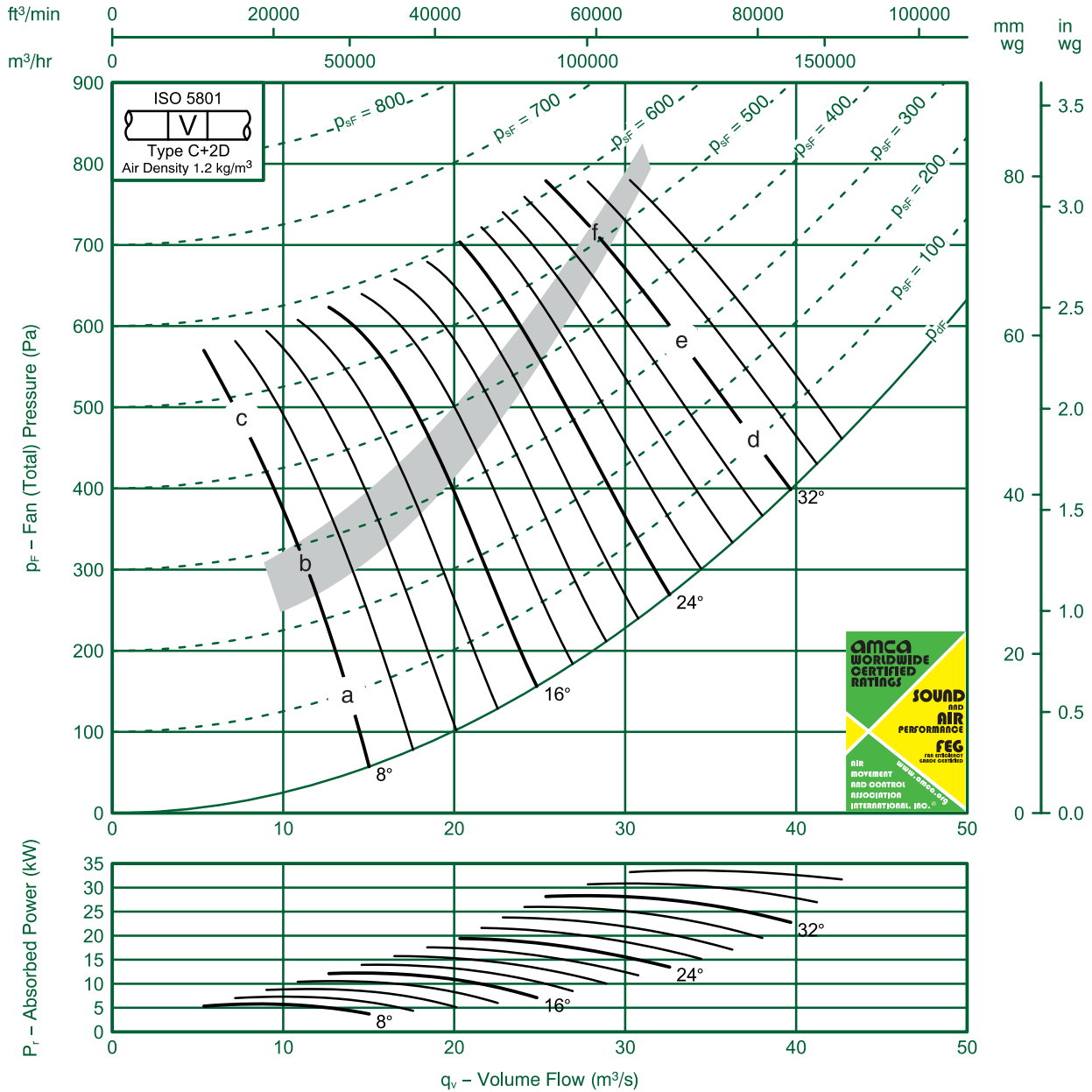
Fan Code: 140JMC/40/6/9/...

1400 mm 960 rev/min 9 Blades 50 Hz



FEG 80

Performance certified is for installation type C-Ducted inlet, Free outlet. Performance ratings do not include the effects of appurtenances (accessories).



Ref	FULL OCTAVE BAND FREQUENCY								LwA
	63 Hz	125 Hz	250 Hz	500 Hz	1K Hz	2K Hz	4K Hz	8K Hz	
a	90	94	97	100	99	92	88	82	102
b	93	100	101	99	95	90	85	79	100
c	94	105	97	88	86	84	81	77	94
d	99	97	92	91	93	94	92	90	99
e	110	108	105	103	100	97	92	89	105
f	122	119	120	116	108	100	93	88	116

FläktGroup India Pvt. Ltd. certifies that the 140JMC/40/6/9 series shown herein are Licensed to bear the AMCA Seal.

The ratings shown are based on tests and procedures performed in accordance with AMCA Publication 211 and AMCA Publication 311 and comply with the requirements of the AMCA Certified Ratings Program.

Performance certified is for Installation type C: Ducted Inlet-Free Outlet. Performance ratings do not include the effects of appurtenances (accessories)

The Sound Power Level ratings shown are in decibels, referred to 10^{-12} watts, calculated per AMCA International Standard 301. Values shown are for inlet LWi and LWiA sound power levels for Installation type C: Ducted Inlet-Free Outlet. Ratings include the effects of duct end correction.

The A-weighted sound ratings shown have been calculated per AMCA International Standard 301.



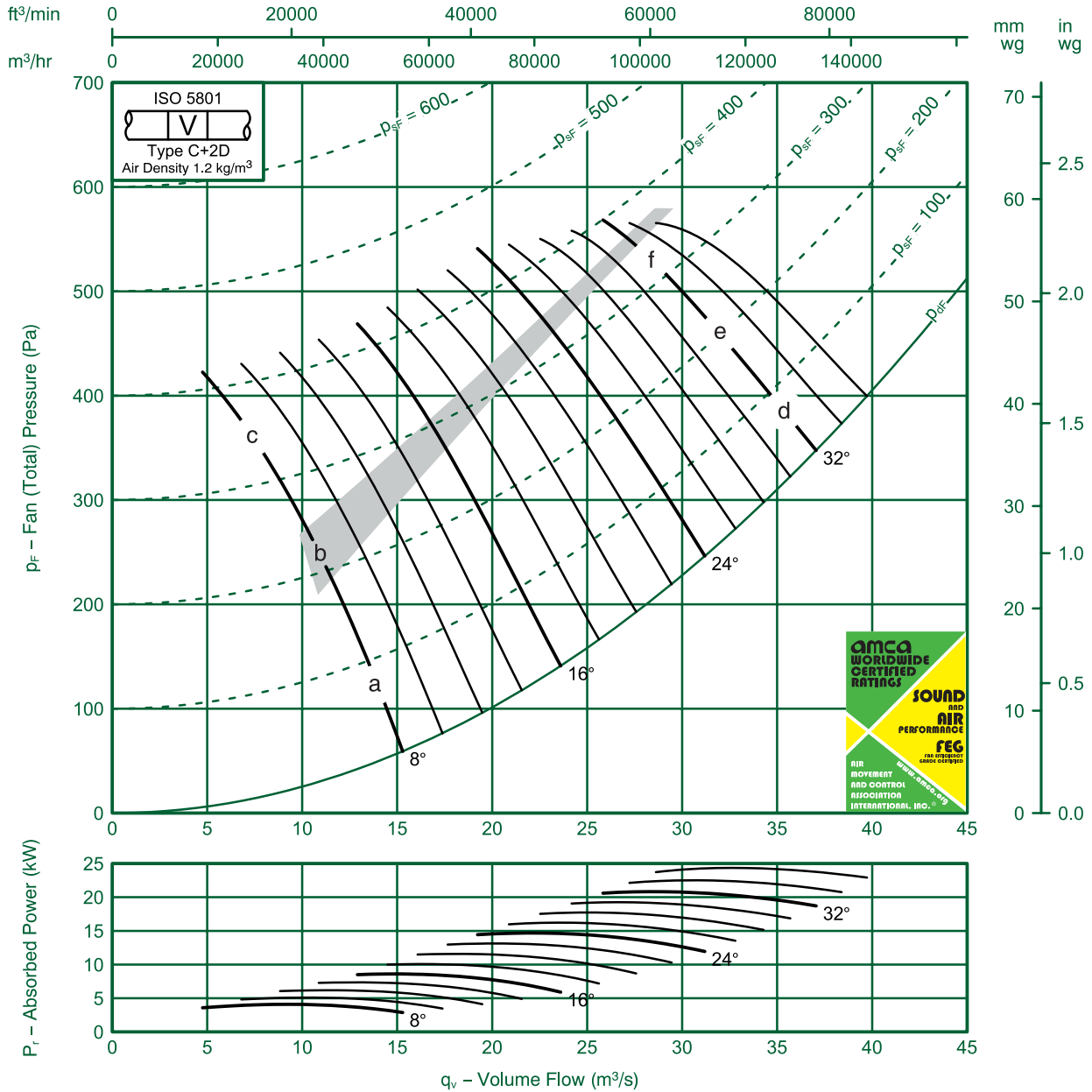
Fan Code: 140JMC/40/6/6/...

1400 mm 960 rev/min 6 Blades 50 Hz



FEG 75

Performance certified is for installation type C-Ducted inlet, Free outlet. Performance ratings do not include the effects of appurtenances (accessories).



FULL OCTAVE BAND FREQUENCY

Ref	63 Hz	125 Hz	250 Hz	500 Hz	1K Hz	2K Hz	4K Hz	8K Hz	LwA
a	92	92	96	98	96	91	85	81	100
b	96	98	101	99	95	90	84	79	100
c	102	107	104	94	89	87	84	79	99
d	102	100	99	98	97	96	92	89	102
e	105	105	104	102	99	96	91	88	104
f	108	110	110	106	103	96	91	87	108

FlaktGroup India Pvt. Ltd. certifies that the 140JMC/40/6/6 series shown herein are Licensed to bear the AMCA Seal.

The ratings shown are based on tests and procedures performed in accordance with AMCA Publication 211 and AMCA Publication 311 and comply with the requirements of the AMCA Certified Ratings Program.

Performance certified is for Installation type C: Ducted Inlet-Free Outlet. Performance ratings do not include the effects of appurtenances (accessories)

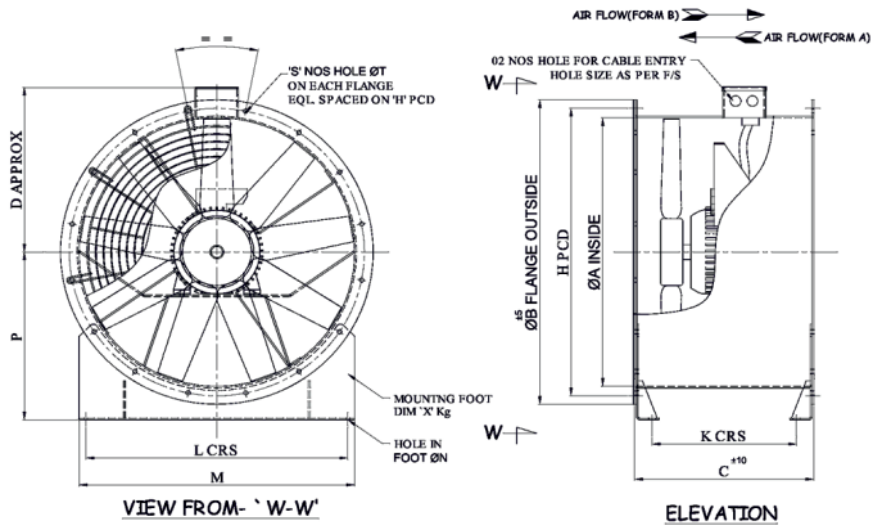
The Sound Power Level ratings shown are in decibels, referred to 10^{-12} watts, calculated per AMCA International Standard 301. Values shown are for inlet LWi and LWiA sound power levels for Installation type C: Ducted Inlet-Free Outlet. Ratings include the effects of duct end correction.

The A-weighted sound ratings shown have been calculated per AMCA International Standard 301.



ISO 9001
FM 00155

Dimensions and Weights



1000 DIA - UP TO 315 HUB

CODE	MOTOR RATING (KW)	A	B	C	D	H	K	L	M	N	P	S	T	X (kg)	FAN WT. (KG)
1000	2.2	1000	1106	520	588	1070	444	950	1000	10	574	16	15	5.3	107
	7.5	1000	1106	520	625	1070	444	950	1000	12	574	16	15	6.2	198
	15	1000	1106	625	625	1070	539	950	1000	12	574	16	15	6.2	268
	22	1000	1106	711	625	1070	539	950	1000	12	574	16	15	12.5	328

1000 - 1600 DIA - UP TO 500 HUB

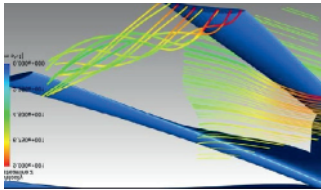
CODE	MOTOR RATING (KW)	A	B	C	D	H	K	L	M	N	P	S	T	X (kg)	FAN WT. (KG)	
															400 HUB	500 HUB
1000	7.5	1000	1106	610	629	1070	530	950	1000	16	574	16	15	12.5	230	
	15	1000	1106	750	630	1070	668	950	1000	16	574	16	15	12.5	330	
	22	1000	1106	800	630	1070	718	950	1000	16	574	16	15	12.5	420	
	30	1000	1106	900	688	1070	818	950	1000	16	574	16	15	12.5	582	
	45	1000	1106	950	688	1070	868	950	1000	16	574	16	15	12.5	613	
1120	7.5	1120	1258	610	690	1190	468	1070	1120	14	710	20	15	16.5	267	282
	15	1120	1258	750	690	1190	608	1070	1120	14	710	20	15	16.5	381	396
	22	1120	1258	800	748	1190	658	1070	1120	14	710	20	15	16.5	445	460
	30	1120	1258	900	748	1190	758	1070	1120	14	710	20	15	16.5	611	626
	45	1120	1258	950	748	1190	808	1070	1120	14	710	20	15	16.5	643	658
1250	7.5	1250	1388	610	755	1320	468	1150	1250	14	800	20	15	20.6	284	300
	15	1250	1388	750	755	1320	608	1150	1250	14	800	20	15	20.6	403	418
	22	1250	1388	800	755	1320	658	1150	1250	14	800	20	15	20.6	467	482
	30	1250	1388	900	813	1320	758	1150	1250	14	800	20	15	20.6	638	652
	45	1250	1388	950	813	1320	808	1150	1250	14	800	20	15	20.6	670	686
1400	7.5	1400	1538	610	830	1470	468	1300	1400	14	900	20	15	34.3	319	338
	15	1400	1538	750	830	1470	608	1300	1400	14	900	20	15	34.3	451	469
	22	1400	1538	800	830	1470	658	1300	1400	14	900	20	15	34.3	516	534
	30	1400	1538	900	888	1470	758	1300	1400	14	900	20	15	34.3	676	693
	45	1400	1538	950	888	1470	808	1300	1400	14	900	20	15	34.3	711	730
	55	1400	1538	1050	888	1470	908	1300	1400	14	900	20	15	34.3	872	892

All dimensions are in mm.

Note: Due to a policy of continuous development and improvement the right is reserved to supply products which may differ from those illustrated and described in this publication. Certified dimensions will be supplied on request on receipt of order.

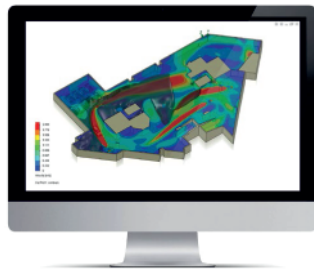
Advanced Selection Tools

Computational Fluid Dynamics (CFD)



Airflow behaviour is difficult and complicated to predict, especially in large spaces such as car parks. Accurate calculations are therefore paramount when creating an effective ventilation system. FläktGroup's modelling is backed up with both lab test research and smoke tests in real car parks to insure accuracy.

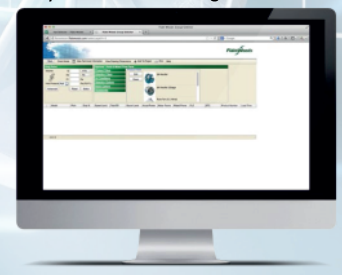
Manual calculations methods used by many as their sole solution are extremely limited. At FläktGroup we therefore offer a full CFD analysis to customers on all projects to prove our solution.



FläktGroup World Class Fan Selector Program

Extended features for efficient Fan Selection. The FläktGroup Fan Selector is probably the most comprehensive tool of its kind in the world. The software has been developed based on many years experience of producing fan selection tools.

The Fan Selector Tool is available to all customers and prospects. To get access you need only a browser with an Internet connection. The tool can be configured with your own preferences (Language, metric, LCC calculation set up, currency, etc). The tool currently includes a large number of the FläktGroup axial fans, centrifugal fans, box and duct fans, and our Energy Recovery Units.

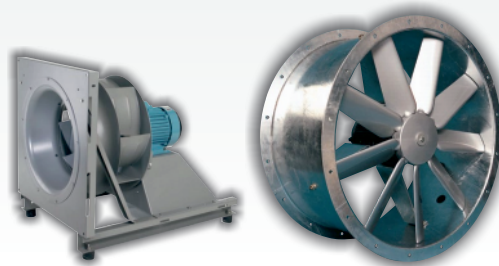


fanselector.flaktwoods.com

FläktGroup India Pvt Ltd - Your local expert

At FläktGroup India we offer expert knowledge and manufacturing since our establishment in the 1950s. Not only do we sell Air Movement products such as fans for fire safety and normal ventilation applications, we have the advantage of being a manufacturer of highly efficient AHUs and are in the unique position of offering both Air Movement and Air Treatment product families.

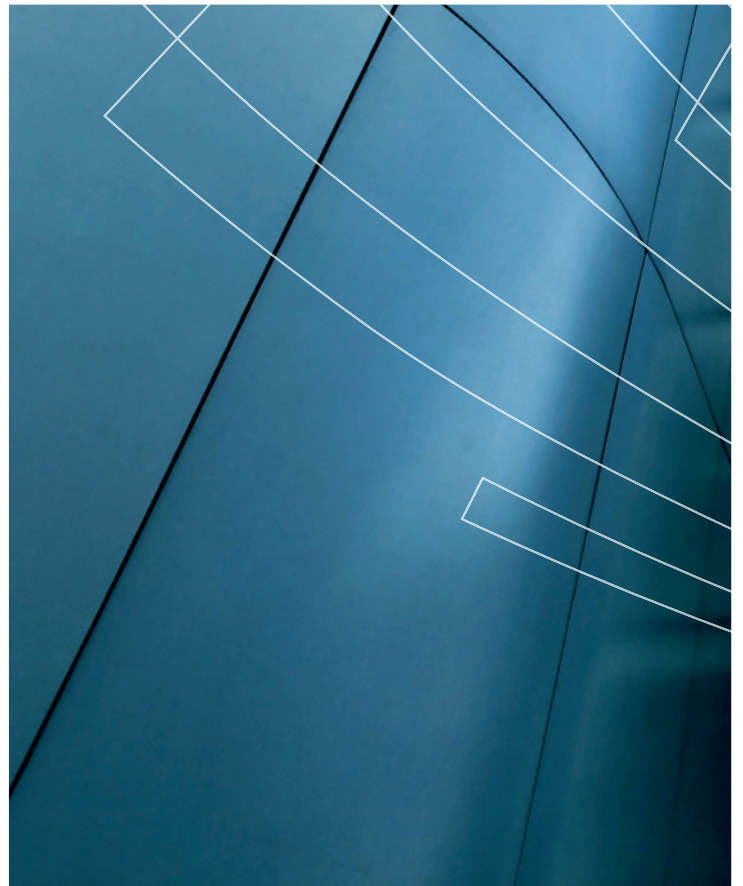
Our fully integrated state of art manufacturing facility has over 10,000 m² capacity. For the first time in India, we have introduced capabilities of manufacturing all AHU components in house. FläktGroup has the facilities to satisfy our customers' needs.



WE BRING **BETTER AIR**[™] TO LIFE

FläktGroup is a global leader for indoor Air Comfort and Fire Safety. We specialize in the design and manufacturing of a wide range of products, systems and components to provide the best performances and maximum energy efficiency. Our product brands such as SEMCO®, eQ®, eQ Prime®, JM Aerofoil®, Econet®, Veloduct®, Optivent®, Optimix®, Econovent® and Cleanvent® are well known and trusted by customers all over the world to deliver best Air Comfort and Fire Safety.

Our collective experience is unrivalled for every customer application like Offices, Hygiene, Hotels, Public Buildings, Education, Car Parks, Retails, Green Buildings, Marine, Oil & Gas. and others.



FläktGroup India Pvt Ltd

Unit-1 : Plot 87, Ecotech-1, Extension-1, Gr. Noida 210308 (UP) | Phone : +91 120 6433600 | Email : tssindia@FlaktGroup.com

FlaktGroup | Centre of Excellence - Axial Fans | Axial Way, Colchester, Essex, CO4 5ZD | tel: 01206 222 555 | fax: 01206 222 777
email: info.uk@flaktgroup.com | website: www.flaktgroup.com