

本公司保留更改样本的权利，恕不另行通知。
INFINAIR reserves the right to make changes to this catalogue in whole or in part without prior notice.

Catalog CUS REV.1 February 2020

INFINAIR® 英飞

INFINAIR® 英飞

英飞同仁风机股份有限公司
INFINAIR CORPORATION

地址：上海市嘉定区外冈镇清能路55号

Add: NO. 55 Qingneng Road, Waigang Town,
Jiading District, Shanghai

邮编 (P.C) : 201806

电话 (Tel) : 86 21 39185688-6896

售后服务电话：400 821 3316

Http: //www.infinair.com.cn

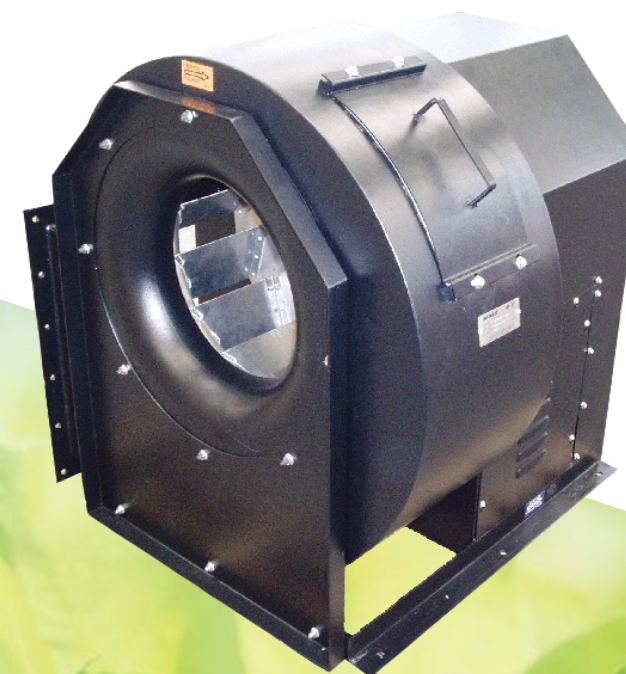


CUS

通用离心风机

Centrifugal Utility Set

- 工作范围: 风量可达40,000M³/h，静压可达1000Pa
 - "翔欣"系列铝制后倾离心叶轮
 - 平衡等级高达G2.5
 - 全焊接外壳，适合排污
 - 机身设计紧凑，节省机房占地
 - 适应室外安装的防雨要求



公司介绍

秉承绿色环保与智能互联的未来发展理念，英飞风机始终坚持在通风领域，坚持不懈投入研发，并以“可靠便利，环保节能，智能互联”作为我们试图为您创造的核心价值。

成立时间：2003年9月
占地面积：33,000 m²
地址：上海市嘉定区清能路55号

服务网络：

公司的营销和服务网络覆盖中国和全球主要地区（包括亚太、北美、欧洲、中东等地），为客户提供及时的技术支持和可靠的售后服务。

公司愿景：

成为最值得信任的专业空气运动与控制、调节品牌

公司使命：

提供最可靠、便利的空气运动与控制、调节服务

荣誉资质：

高新技术企业
上海著名商标：**INFINAIR®英飞**
上海名牌产品：英飞风机
SGS ISO 9001、ISO 14001、OHSAS 18001管理体系认证

技术实力：

英飞空气动力实验室，荣获CNAS（中国合格评定国家认可委员会）国家实验室认可
中国大陆首家荣获AMCA（国际空气运动与控制协会）认可的实验室
众多产品具备国际AMCA认证、TUV认证、CE认证，国家防爆及消防认证等



INFINAIR CORPORATION certifies that the Model CUS shown herein is licensed to bear the AMCA Seal. The ratings shown are based on tests and procedures performed in accordance with AMCA Publication 211 and AMCA Publication 311 and comply with the requirements of the AMCA Certified Ratings Program.

INFINAIR® 英飞

英飞同仁风机股份有限公司
INFINAIR CORPORATION

Company Info

INFINAIR is committed to providing high-quality products and friendly services to our customers throughout the world. We strive to consistently meet or exceed our quality standards in the design, manufacturing and distribution of products to our customers. We are also determined to be different in caring our environment through innovative ideas.

Established: September, 2003
Area : 33,000m²
Company Address: No.55, Qingneng Road, Waigang Town, Jiading District, Shanghai, P.R. China

Extensive Service Network:

INFINAIR's extensive marketing and service network covers China and major regions of the world (including Asia Pacific, North America, Europe, the Middle East, etc.), providing customers with timely technical support and reliable after-sales service.

Company Vision:

To be the most trusted brand in ventilation industry.

Company Mission:

Provide reliable, convenient air movement controls, operations and services.

Awards and Achievements:

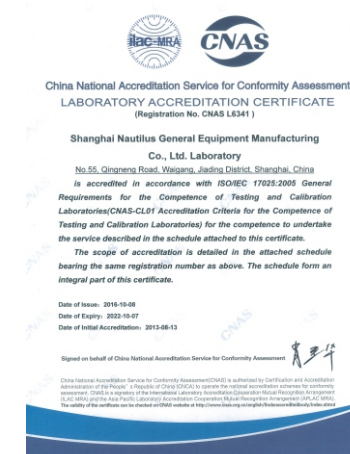
High-tech Enterprise
Renowned Shanghai Trademark: **INFINAIR®英飞**
Shanghai Famous Brand Product : INFINAIR FAN
SGS ISO 9001, ISO 14001 and OHSAS 18001 Management Certificates

Technological Strength:

INFINAIR's Air Movement & Sound Laboratory is the first Air Movement and Control Association (AMCA) accredited laboratory in mainland China.
It is also certified by Chinese National Accreditation Service for Conformity Assessment (CNAS).
Most of the INFINAIR's products are tested and certified by many international certification bodies such as AMCA, TUV , CE, CCC, CNEX, etc.



中国合格评定国家认可委员会(CNAS)
国家实验室认可证书



Certificate Issued by Chinese National
Accreditation Service for Conformity
Assessment (CNAS)



AMCA (国际空气运动与控制协会)
实验室认可证书
Certificate of AMCA (Air Movement and
Control Association) Accredited Laboratory

英飞智能通风技术

- **智能需求感知**：随荷载变动、环境变化动态确定运行目标。
- **智能工况调整**：变频或EC智能控制技术在智能调速软件的动态控制下，性能紧密贴近真实需求。
- **智能实时通讯**：通过多种通讯技术，链接互联网或局域网，实现与中控系统及移动终端的智能通讯。
- **智能预警**：可靠的传感器提供了故障的早期征兆，实现智能预警，保证系统稳定运行。

飞鹰服务

- **联合研发**：通过与客户共同开发，以及质量的先期策划，来快速提供真正有效的解决方案。
- **配套定制**：我们的定制服务通过渐进明晰的过程，帮助您找到精确的需求。
- **敏捷服务**：遍布全国的英飞售后服务工程师，敏捷提供专业服务。

绿色智能环保技术

- **流场模拟分析技术**：
对叶轮气动模型的性能（风量，风压，功耗，声音）预测提供模拟计算，不必制作样机而预知性能，快速优化。
- **有限元分析技术**：
针对受力和材料特性进行结构可靠性分析。

英飞仿生技术

- **英飞节能仿生**
鸬鹚螺为什么可以轻松浮动和游走？鸟类是如何以极低的能耗翱翔千里？
- **英飞降噪仿生**
猫头鹰的静音飞行，为什么敏感的老鼠也毫无察觉？
自然界生物在千万年进化过程中，如何节约能量进行迁徙，或者在抓捕猎物的时候做到悄无声息？
仿生技术对于英飞风机的研发，提供了重要的灵感。

英飞智能制造技术

- 智能化生产流水线
- 在线测功、动平衡和通讯检测
- 机器人焊接工艺
- 敏捷的精益生产
- 6Σ体系

认证及检测

- **产品普遍通过国内外认证**：
CCCf, AMCA, TUV, CE, ATEX, UL, RoHS, ErP2015等。
- **产品性能及可靠性检测**：
风量，风压，功率，声音，
高低温耐久，盐雾，淋雨等。

物联

- 矩阵互联
- 中控互联
- 终端互联



INFINAIR's Intelligent Ventilation Technology

- **Smart Needs Identification**:
It can dynamically adjust the operation target to the changing load and environment.
- **Intelligent Adjustment**:
The use of inverter or EC smart control technology can make the fans achieve best results under the control of the intelligent speed regulation system.
- **Intelligent Real-time Information**:
Individual workstations are linked to the central control system through internet or local area network.
- **Intelligent Detection System**:
Reliable sensors can detect early symptoms and notify the user, ensuring stable operation.

INFINAIR's After-sales Service

- **Joint Research & Development**
The Joint R&D can provide customer the necessary support and guidance during the initial research progress.
- **Customization**
Our products are fully customizable. We are able to satisfy customer requirements on an individual basis.

Green Smart Technology

- **CFD Simulation & Analysis**
A computer-aided air movement simulation model can calculate the efficiency of the fan based on the number of blades, blade angle, width, and sound level.
- **Finite Element Analysis Technology**
To analyze and provide accurate prediction of how material is likely to respond when subjected to structural and/or thermal loads.

INFINAIR's Bionic Technology

- **INFINAIR's Bionic Energy Conservation**
We develop energy saving products by observing behaviors from the animal kingdom. How can birds fly thousands of miles with extremely low energy consumption?
- **INFINAIR's Bionic Sound Reduction**
Why owls can fly so silently? Even mice are not being able to detect their approach?
The research and development of INFINAIR's products are heavily inspired by the animal evolution over the past millenniums. We have learnt how energy and sound are being able to conserve from their amazing changes.

INFINAIR's Intelligent Fabrication

- Intelligent fabrication process
- Power test, dynamic balancing test and communication test performed on the production line
- Robotic welding technology
- Lean production
- 6Σ system

Certifications and Tests

- **Most of the products are certificated by**:
CCCf, AMCA, TUV, CE, ATEX, UL, RoHS and ErP2015.
- **Performance and Reliability Tests**:
Airflow, Air Pressure, Power, Sound Level, Temperature Durability, Salt Spray and Water Proof Test, etc.

Connectivity

- Matrix Connection
- Central Connection
- Terminal Connection

“翔欣™” 第四代叶轮特性

Characteristic of the 4th generation Wind-Surfer™ wheel series

✓ “翔欣™” 第四代叶轮特性

Characteristic of the 4th generation Wind-Surfer™ wheel series

- 优秀的启动特性和噪音特性
Excellent aerodynamic characteristics and noise characteristics
- 高效区宽、不过载
High-efficient area width without overloading
- 平衡等级高达G2.5 (普通产品仅为G6.3)
Balance quality grade up to G2.5 (Typical products are balanced to G6.3 only)

✓ 结构性能设计

Structure performance design

- 采用FEA进行应力分析, 提升性能
Stress analysis of FEA to Improve performance
- 根据规格选择不同的加强结构, 提升可靠性
Selected the strengthen structure according to different specifications to improve reliability
- 采用铆接技术, 无应力产生
Using riveting technology to avoid stress



✓ 叶轮改进

Improved wheel

- 持续改进: 叶轮已经进入第4代
Continues improvement: The wheel has the 4th generation
- 较3代相比: 同等参数性能提升5-10%
Compared with the 3rd generation: Performance increased by 5-10% in the same parameters
- 较3代相比: 同等参数噪音下降2-3Db(A)
Compared with the 3rd generation: Noise reduced 2-3 dB(A) in the same parameters

✓ 空气动力性能设计

Air performance design

- 采用CFD流场模拟技术优化设计, 反复验证
Optimized design of CFD flow field simulation
- 前盘与导风口符合流场特性
Front disc and inlet venture tube according with flow field characteristic
- 流道控制: 精密配合, 对气流约束性强
Flow passage control: matched each other to restrain
- 叶片安装角度得以优化
Optimize the blade angles

✓ 工艺先进

Advanced process

- 导风口和前盘旋压工艺
确保流线启动特性
Inlet venture tube & Front disc: spun process to ensure streamlines aerodynamic characteristics
- 导风口: 取代导流圈, 确保气流顺畅
Inlet venture tube: replace bell mouth to ensure smooth air flow
- 叶片: 一次冲压成型确保加工质量
Blades: once punch forming to ensure process quality
- 工装: 专门夹具确保叶片安装定位精确
Tooling: dedicated fixture to ensure precise install of the blades

产品特点

Product Feature

✓ 性能覆盖范围广

Wide performance range

- 叶轮直径: 300 ~ 1000 mm
Wheel diameter: 300 ~ 1000mm
- 转速范围宽, 性能覆盖广, 选型方便
Wide rotation speed range, easy to select
- 皮带轮可调节匝数或更换, 电机可更换: 方便调整性能范围, 适应性好
Pulley can be adjusted turns or replaced, motor is replaceable: fine tone fan performance range easily

✓ 蜗壳可旋转: 现场调整出风方向

Housing can be rotated at jobsite

- 蜗壳由8等分螺栓固定, 在允许角度内, 现场即可调节出风方向
Scroll is fixed by 8 housing bolts; housing can be rotated at jobsite within limited angle

✓ Spark B 防爆结构

Spark B resistant construction

- 铝制叶轮配合铝制进风口, 天然防爆
Aluminum wheel & inlet
Natural explosion resistant
- AMCA 标准的 Spark B 级
防爆结构
AMCA standard: Spark B

✓ 连续焊接外壳

Continuously Welded Housing

- 外壳连续焊接, 结构强度大
Continuously welded housing: rigid structure
- 与机械力咬口的蜗壳相比, 更适应含液体空气的通风。
Suitable for wet or contaminated air compared with mechanical "Pittsburg" lock-seam housing
- 当有液滴聚集在蜗壳内部时, 不会发生缓慢渗漏
Will not leak when liquid gathered inside the scroll
- 适合排含凝结水, 厨房油烟空气
Suitable for exhaust wet or grease contaminated air



✓ 结构紧凑

Compact profile

- 皮带传动为 AMCA 10 号结构类型(即电机位于轴的正下方), 直联传动为 AMCA 4 号结构类型
Belt drive: AMCA arrangement 10 (motor is under the shaft)
Direct drive: AMCA arrangement 4
- 机器整体结构紧凑, 明显节省昂贵的机房占地
Fan size reduced, expensive mechanical room space saved
- 降低皮带长度, 延长皮带寿命
Belt length reduced and belt life extended
- 蜗壳中心高降低, 为风管安装留出更多空间
The low center height of scroll leaves more space for duct installation

✓ AMCA 印章: 声音和空气动力性能认证

AMCA Seal: sound and air performance certified

- CUS 产品性能已经通过 AMCA 声音和空气动力性能认证
The sound & air performance is AMCA Certified
- 设备贴有 AMCA 声音与空气动力性能认证印章
Sound & Air Performance AMCA Seal is applied to each fan

✓ 方便检修

Easy maintenance

- 电机左右两侧均设有检修门
Access doors are available on both sides of motor chamber
- 一把螺丝刀完成电气部分的巡检和维修: 方便快捷。
One screw driver finishes all electrical and mechanical inspection: easily and quickly
- 标配蜗壳检修门
Standard scroll access door available

✓ 适合室外安装

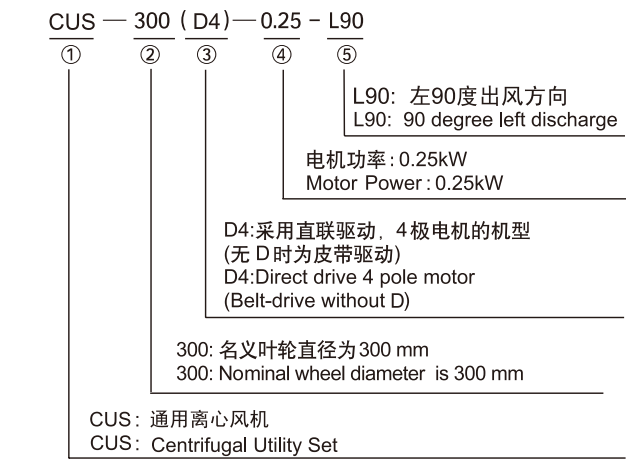
Suitable for outdoor installation

- 选配防雨罩: 保护整个驱动部分
Optional weather cover: protect the whole drive
- 完全防护: 避免日照, 雨雪直接作用于运转部件
Avoid sunshine, rain, snow directly impact on running parts
- 降低气候因素对风机寿命及安全性的影响
Climate factor on durability and safety of the outdoor-installed fan is reduced

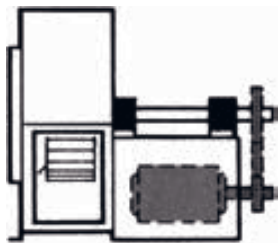
可选配件
Optional Accesories

- 进/出口安全防护网
进/出风口选用金属制高强度防护网，有效防止异物进入风机和风管，同时其防护网眼密度满足劳动保护要求。根据需要，可以单独订购进/出口防护网的一种。
Inlet/outlet safety screen
Metal safety screen can be installed either on inlet or outlet of the fan. The screen with rigid strength can prevent debris into the fan and duct. The density of the screen is also qualified for labor protection. Either inlet or outlet screen can be ordered separately.
- 防雨罩
皮带传动的 CUS 风机标准配置为室内安装，包含轴/轴承护罩和皮带护罩各一只。当室外安装时，应选配防雨罩，该防雨罩可有效地阻挡阳光，雨雪与电机，皮带轮，轴承等运转部件接触。直联传动的 CUS 室外安装时也应选配电机防雨罩。
Weather hood
Standard belt drive CUS fans are equipped for indoor installation, which include a shaft/bearing cover as well as belt cover. When the fan is outdoor installed, weatherhood shall be selected to prevent motor, pulley & bearing from sunshine, rain and snow. Direct drive CUS shall be matched with motor weatherhood when the fan is outdoor installed.
- 排液口
置于蜗壳底部，便于及时排出液态的污物如凝结水，油污等。
Drain
Located on the bottom of scroll to discharge contaminated substance such as condensed water, grease etc.
- 减振器
可以根据需要选配橡胶或弹簧的减振器。由英飞提供的减振器可以确保经过严格的测试和检验，起到良好的减振效果。
Vibration isolators
Both rubber and spring vibration isolators are available. Isolators provided by INFINAIR are tested and inspected strictly, the performance is guaranteed.
- 进出口对法兰
风机与风管连接时的必要部件，使风管能够方便地安装到风机上。
Inlet/Outlet Companion Flange
The companion flanges are attached to the ductwork to provide an exact mate to the flanged connection on the fan.
- 进出口软接头
风机与风管之间的柔性连接装置，可实现不同管径、不同中心高度的系统对接，同时避免风机振动传至整个系统。
Inlet/Outlet Flexible Duct Connector
Flexible Duct Connectors provide a flexible connection between the fan and the attached ductwork. This reduces the transmission of noise and vibration to the ductwork as well as allowing for slight misalignment.
- 轴承延长润滑油管 (仅限皮带传动)
将轴承润滑油嘴延伸到设备外部的装置，避免加油时拆去轴承护罩，减小维护工作量。
Extended lube lines (Apply to belt drive only)
Use extended lube lines for easy maintenance, avoiding removing bearing cover while oiling .

命名规范 Naming convention



		L0°	L45°	L90°	L135°	L180°
		R0°	R45°	R90°	R135°	R180°
图号 Dwg. No.		L0	L45	L90	L135	L180
国标 GB	L(左)	左 0°	左 45°	左 90°	左 135°	左 180°
欧洲 EUROPE	LG	270	315	0	45	90
AMCA标准 AMCA Standard	CCW	BH	BAU	UB	TAU	TH
图号 Dwg. No.		R0	R45	R90	R135	R180
国标 GB	右(R)	右 0°	右 45°	右 90°	右 135°	右 180°
欧洲 EUROPE	RD	270	315	0	45	90
AMCA标准 AMCA Standard	CW	BH	BAU	UB	TAU	TH



确定旋向时的观察方向

Point of view when determine rotation

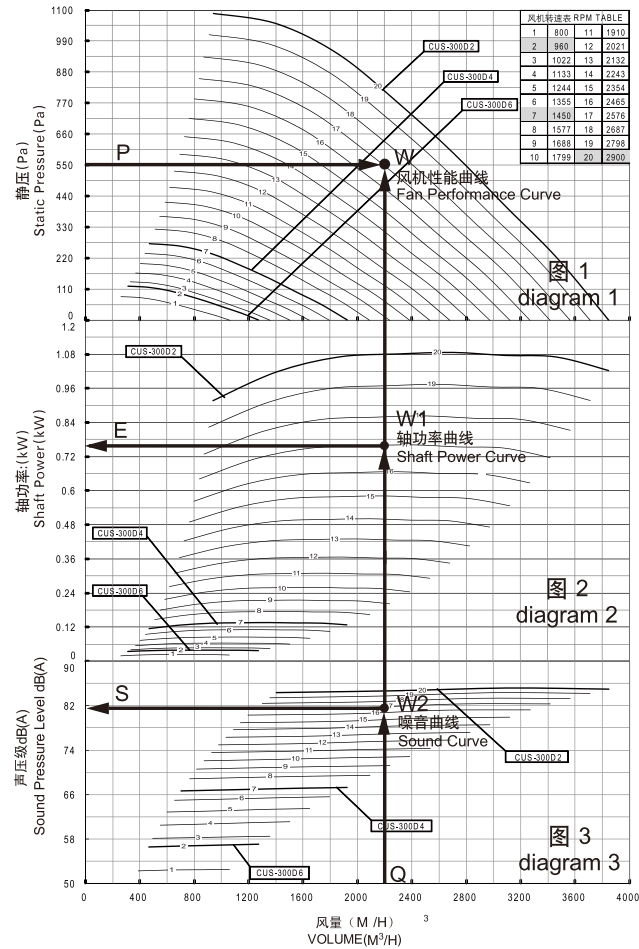
注意:
旋转方向定义为从电机所在一侧观察的结果, INFINAIR® 采用国标。举例: 一台 CUS-425-2.2 的风机, 当确认其旋向为“左 0 度”时 (AMCA 标准为 CCW-BH, 欧标为 LG270) 则命名为 CUS-425-2.2-L0, 如上表所示。
Note:
The rotation is identified from the view of motor side, INFINAIR® adopt Chinese National Standard. For example, a CUS-425-2.2 with CCW-BH(AMCA) rotation, or LG270(Europe), please name it as CUS-425-2.2-L0 as per above table.

样本说明

- 每个型号风机由一族曲线表示不同转速下的性能。
- 粗曲线代表风机为直联型，即叶轮与电机直接连接（直联机型的型号已经在图中单独用箭头标出）所有直联型号均应在叶轮直径后加字母 D 以及电机极数，其风机转速与电机极数的对应关系如附表所示。
- 细曲线代表使用皮带连接，通过选择两个皮带轮不同直径配比来得到所需转速，而电机总是采用 4 极的。
- 轴功率曲线显示风机实际耗用的电能。
- 声压级曲线显示距离 1.5 米处的噪声。

Catalogue introduction

- Each fan performance is symbolized by a group of curves for different RPM.
- The bolded curves indicate the fan is direct drive which means the wheel is installed on the motor shaft directly. All direct drive models shall have a suffix letter D followed by motor pole number (which is already marked on the drawing). The attached table shows motor RPM at different number of poles.
- The not-bolded curves means the fan is belt drive. The belt drive models establish different RPM by choosing different diameter of the 2 pulleys, while the motor is always 4-pole.
- Shaft Power Curve displays the fan actual power consumption.
- The sound pressure level curve indicated the noise level at 1.5 meter distance.



选型举例: 2200M³/h, 550Pa 静压

(1) 自给定风量 (图Q点: 2200M³/H) 出发作垂直线, 自给定静压 (图P点: 550Pa) 作水平线, 其交点 (W) 即为“工作点”。寻找离该点最接近的性能曲线 (应为第17号曲线), 其对应转速按照转速表应 2576 转/分。

(2) 该垂直线与图 2 中相同编号的曲线交点为 W1, 从该点作水平线与轴功率曲线坐标轴相交, 其交点 E (约为 0.77kW) 即为实际功耗, 代表工作所需的电能。根据该功率, 应选择 1.1 kW 电机。

(3) 该垂直线与图3中相同编号的曲线交点为 W2, 从该点作水平线与噪音曲线坐标轴的交点 S (约为 82dB(A)) 即为声压级噪音。

(4) 根据上述步骤, 该型号初步选定为 CUS-300-1.1, 皮带驱动, 出厂转速设定 2576RPM。如果希望功率或噪音更低, 可参考大一档风机进行比较, 但初投资会增加。

(5) 进一步地, 如果需求为 2200M³/H, 825Pa 静压, 则容易发现 W' 点距离 20 号加粗曲线 (代表直连风机, 2900 RPM, 2 极电机) 很接近, 则按照箭头标明的型号为 CUS-300D2 配 1.5kW 电机, 其性价比更高。

Example: 2200 M³/h, 550 Pa Static Pressure

Step 1: From given volume (Point Q: 2200M³/H) draw a vertical line upwards, from given static pressure (Point P: 550Pa) draw a horizontal line to the right, the intersection point W is the working point. Find a fan curve close to the point, which would be curve No. 17. As highlighted in the RPM table, it is 2576 RPM.

Step 2: The intersection point between the vertical line and the curve No. 17 in diagram 2 is marked as point W1. Draw a horizontal line from point W1 to the left coordinate, which makes point E. The point E (about 0.77kW) is the shaft power. According to the shaft power, a 1.1 kW motor shall be equipped.

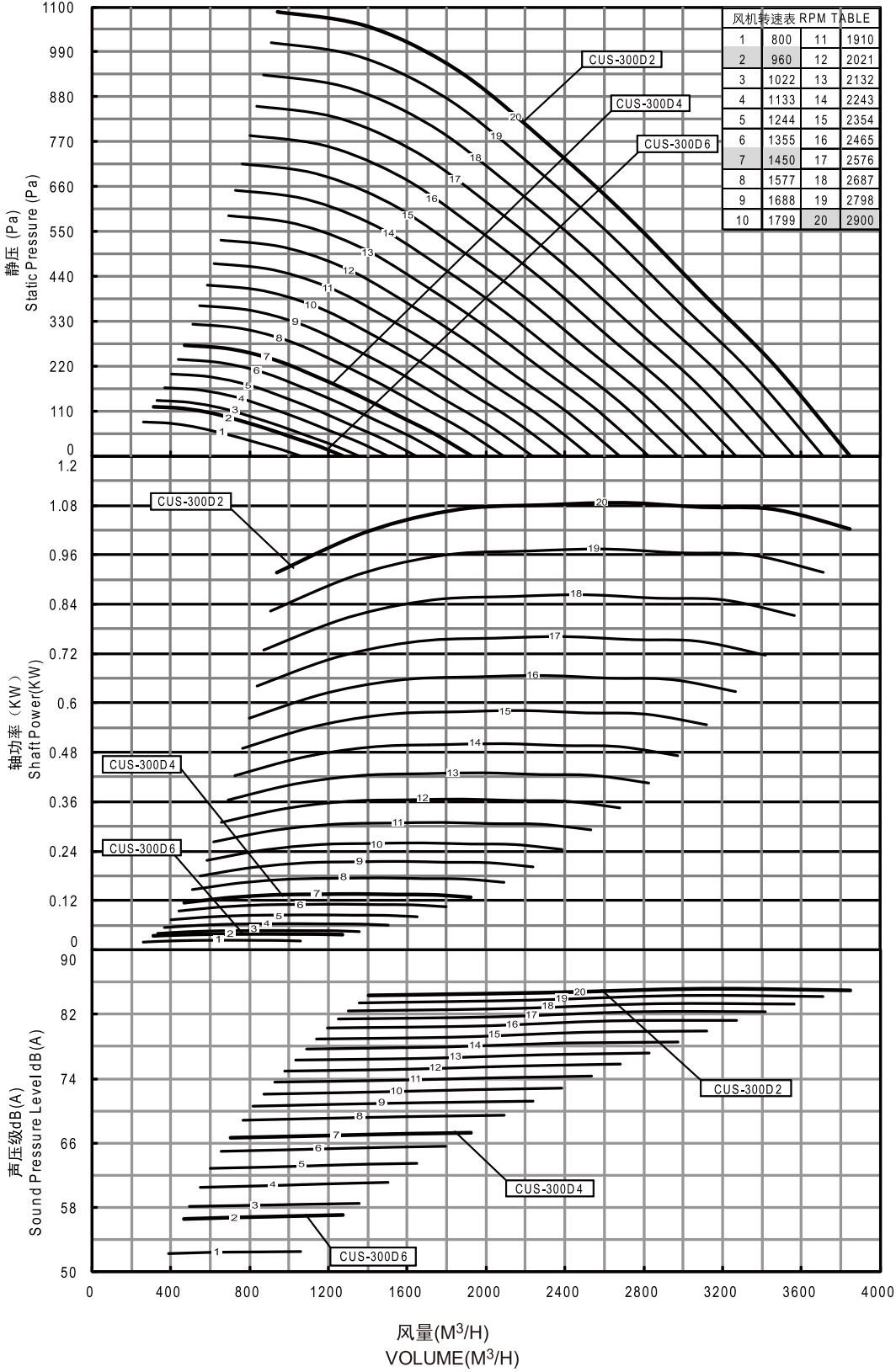
Step 3: The intersection point between the vertical line and the curve No. 17 in diagram 3 is marked as point W2. Draw a horizontal line from point W2 to the left coordinate, which makes point S (about 82dB(A)). It is the fan sound pressure level.

Step 4: According to above steps, the primary model selection would be CUS-300-1.1, belt drive, and factory set to 2576RPM. If lower shaft power or noise is expected, you may compare with another larger fan. However a larger fan would increase primary investment.

Step 5: Furthermore, if customer needs 2200M³/h at 825Pa static pressure, you would find point W' is close to curve No.20 (bolded, indicates 2900RPM 2 pole direct drive). Then a direct drive fan (CUS-300D2-1.5) can be selected which would be more economic.

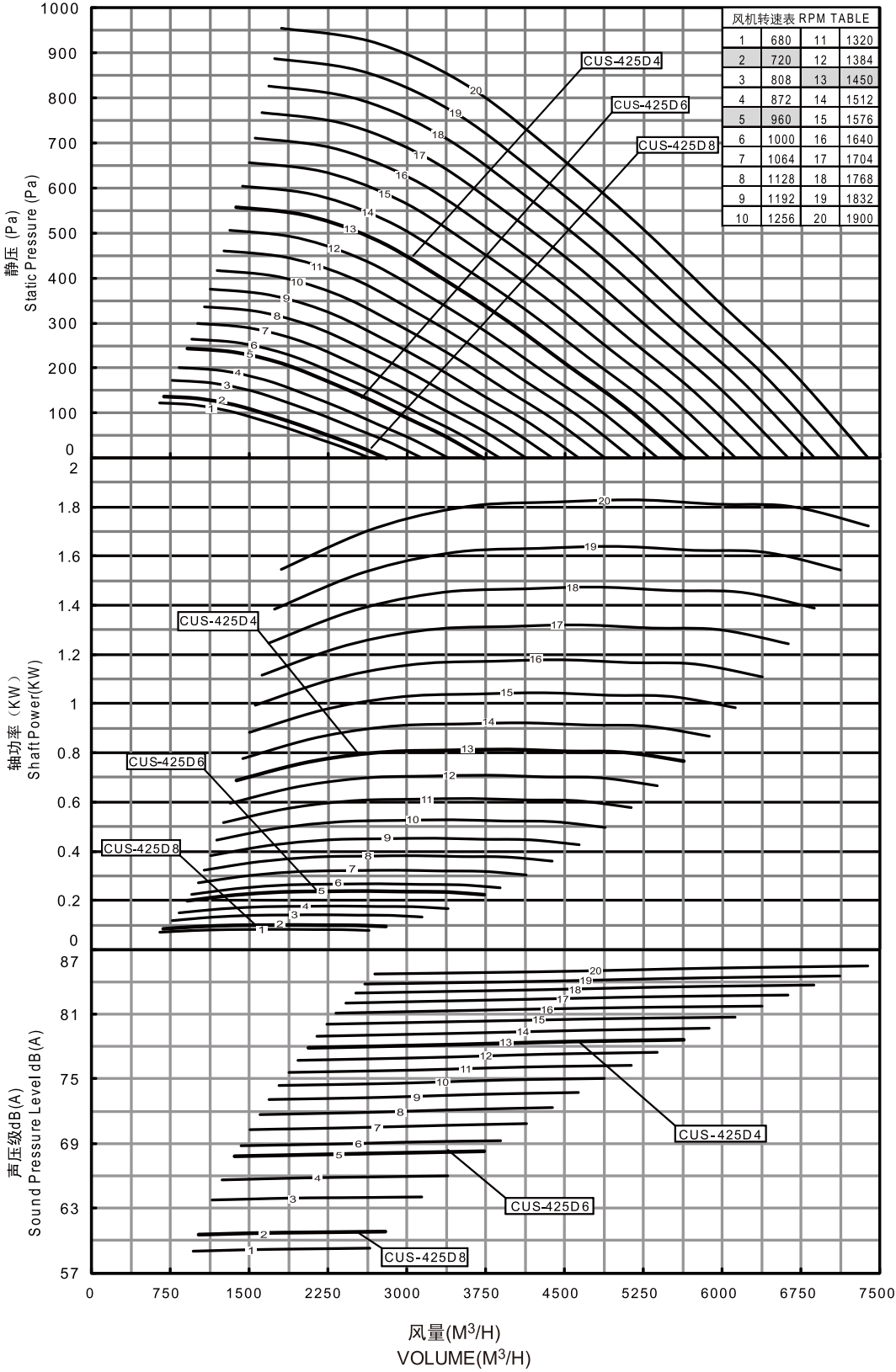
电机极数	电机转速 (转/分)
No. of poles	RPM (About)
2	2900
4	1450
6	960
8	720

型号: CUS-300
Model: CUS-300



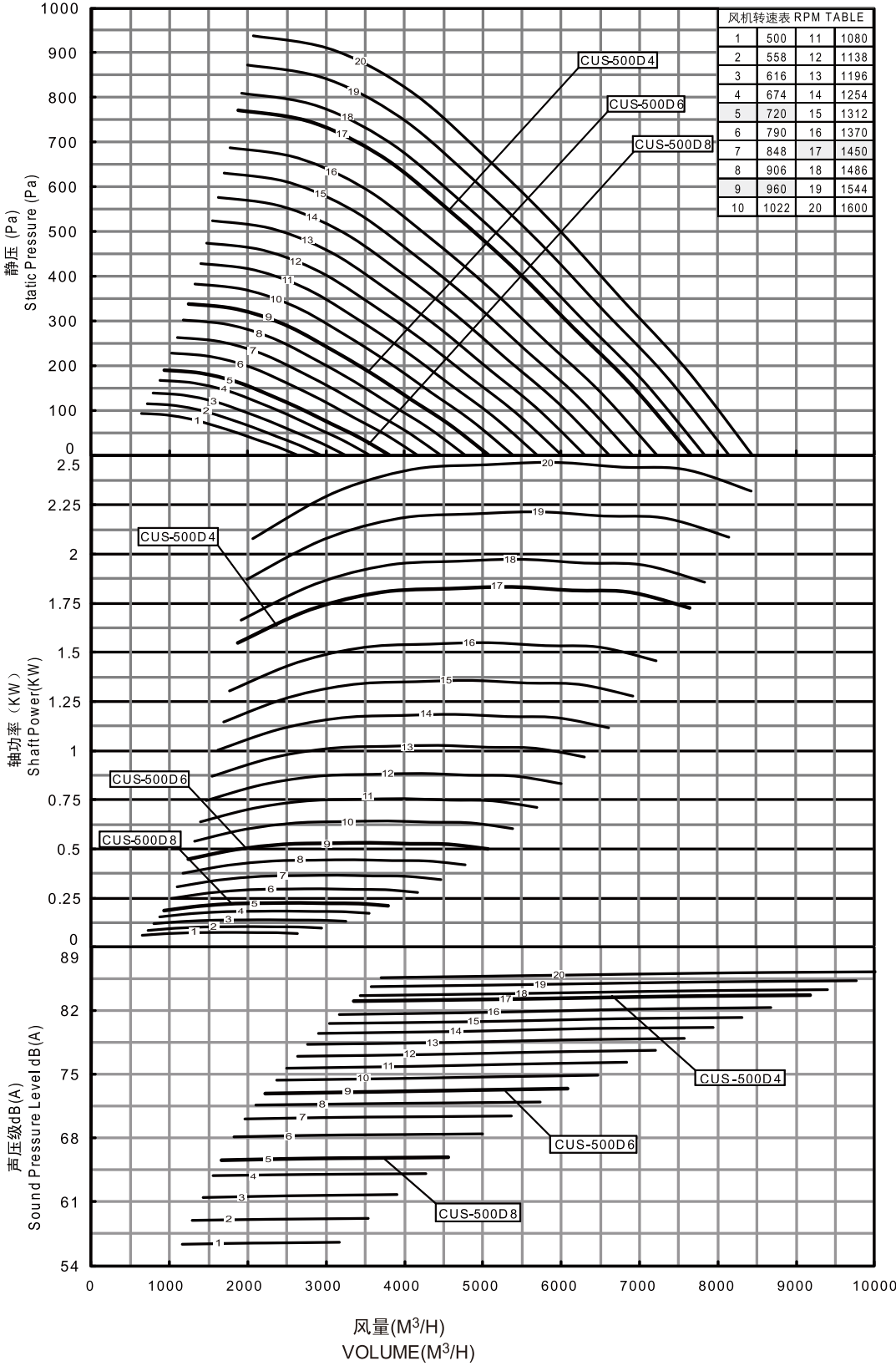
Performance certified is for installation type B - free inlet, ducted outlet. Power rating (kW) does not includes transmission losses. Performance ratings do not include the effects of appurtenances (accessories) . dB(A) A-weighted sound pressure level is based on 11.5 dB sound attenuation per octave band at 1.5m. Note that dB(A) levels are not licensed by AMCA International.

型号: CUS-425
Model: CUS-425



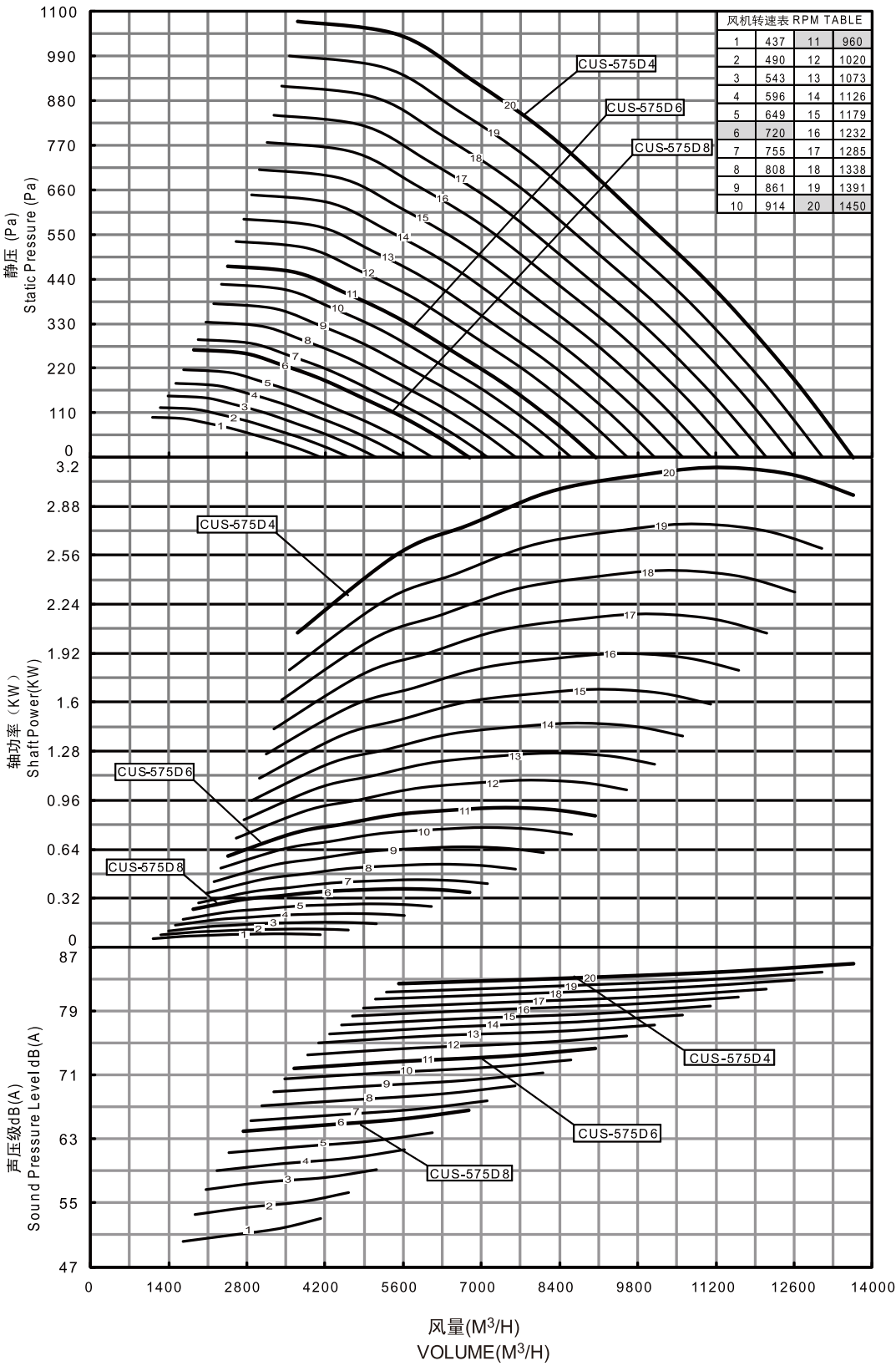
Performance certified is for installation type B - free inlet, ducted outlet. Power rating (kW) does not includes transmission losses. Performance ratings do not include the effects of appurtenances (accessories) . dB(A) A-weighted sound pressure level is based on 11.5 dB sound attenuation per octave band at 1.5m. Note that dB(A) levels are not licensed by AMCA International.

型号: CUS-500
Model: CUS-500



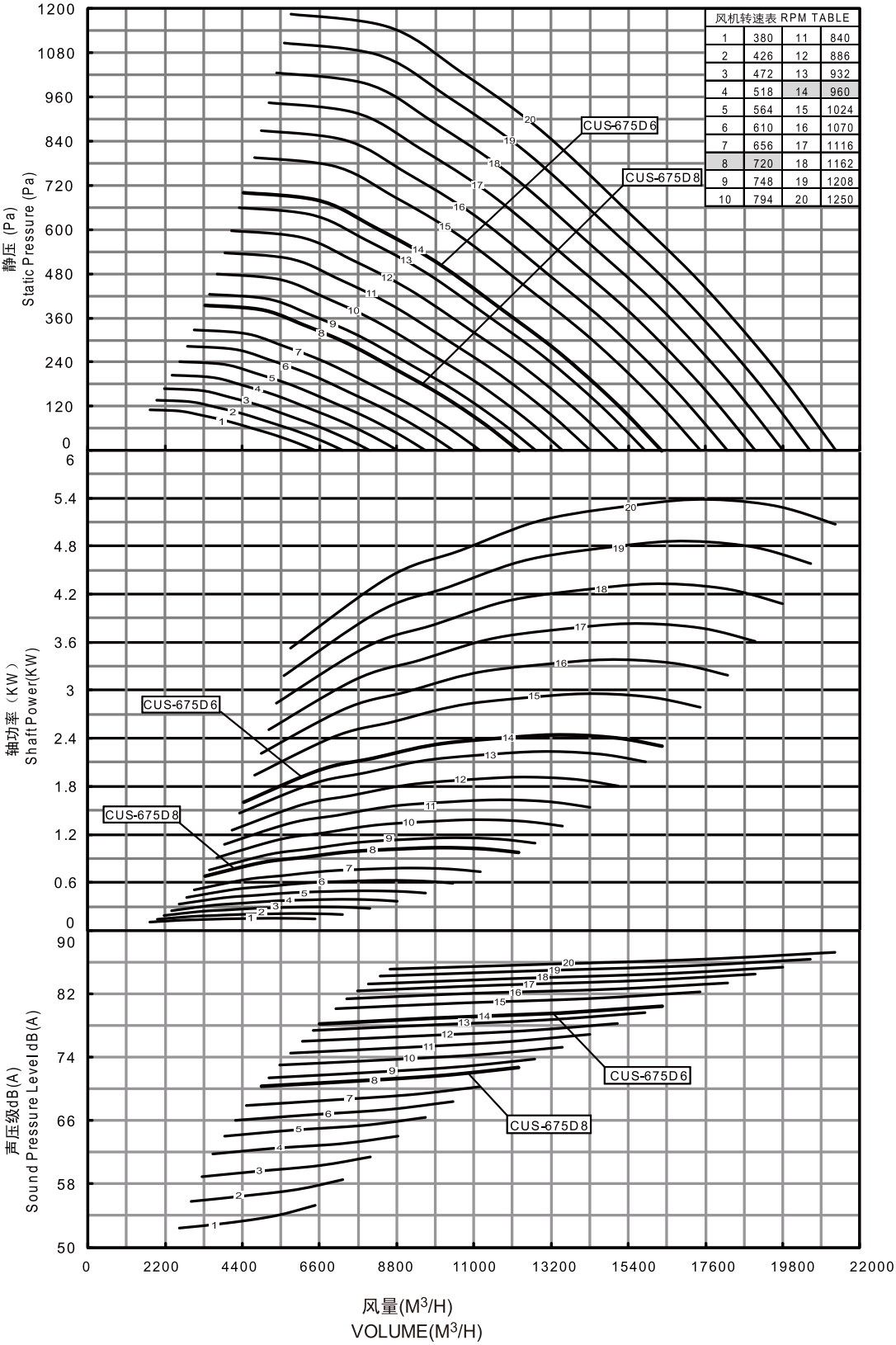
Performance certified is for installation type B - free inlet, ducted outlet. Power rating (kW) does not includes transmission losses. Performance ratings do not include the effects of appurtenances (accessories) . dB(A) A-weighted sound pressure level is based on 11.5 dB sound attenuation per octave band at 1.5m. Note that dB(A) levels are not licensed by AMCA International.

型号: CUS-575
Model: CUS-575



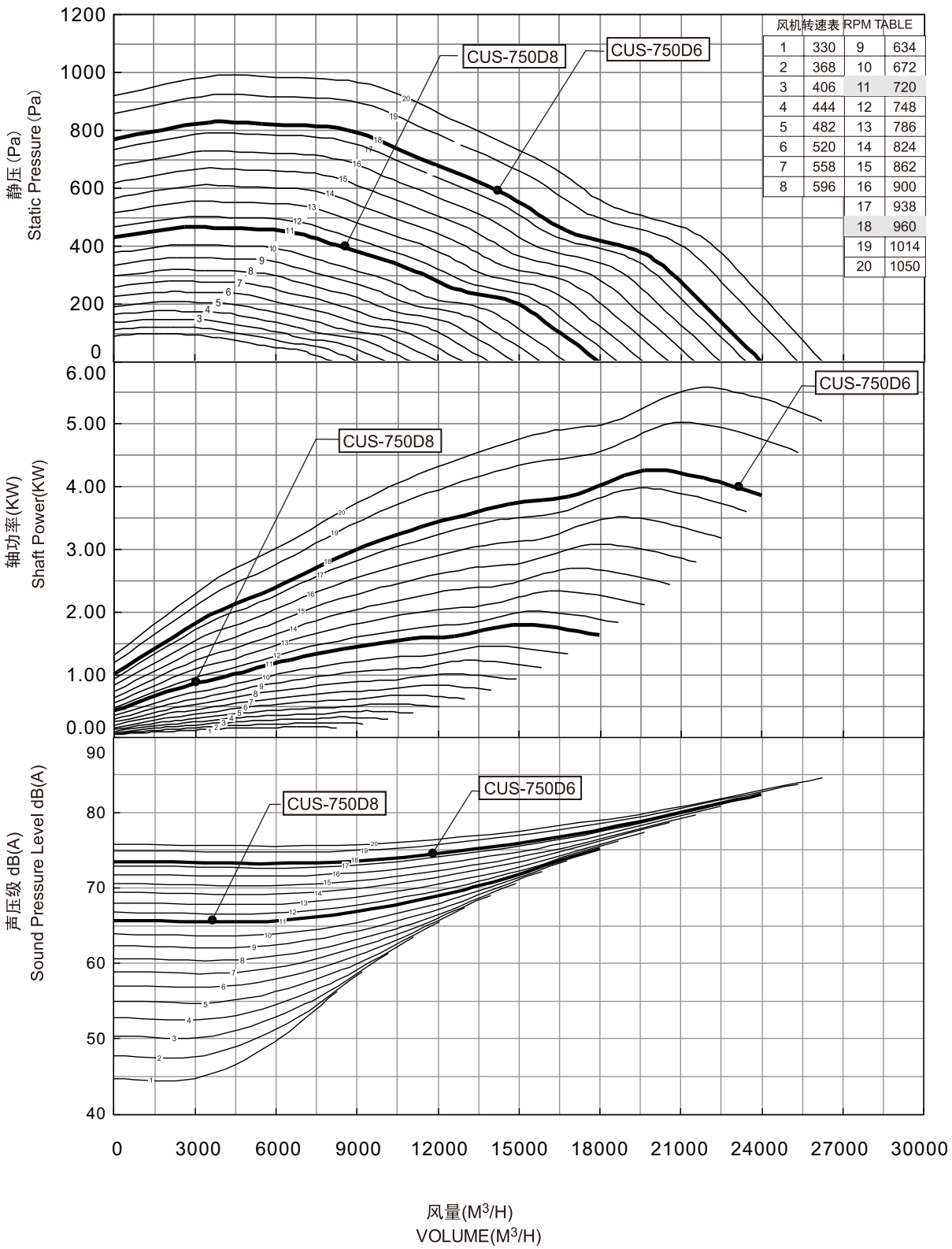
Performance certified is for installation type B - free inlet, ducted outlet. Power rating (kW) does not includes transmission losses. Performance ratings do not include the effects of appurtenances (accessories) . dB(A) A-weighted sound pressure level is based on 11.5 dB sound attenuation per octave band at 1.5m. Note that dB(A) levels are not licensed by AMCA International.

型号: CUS-675
Model: CUS-675



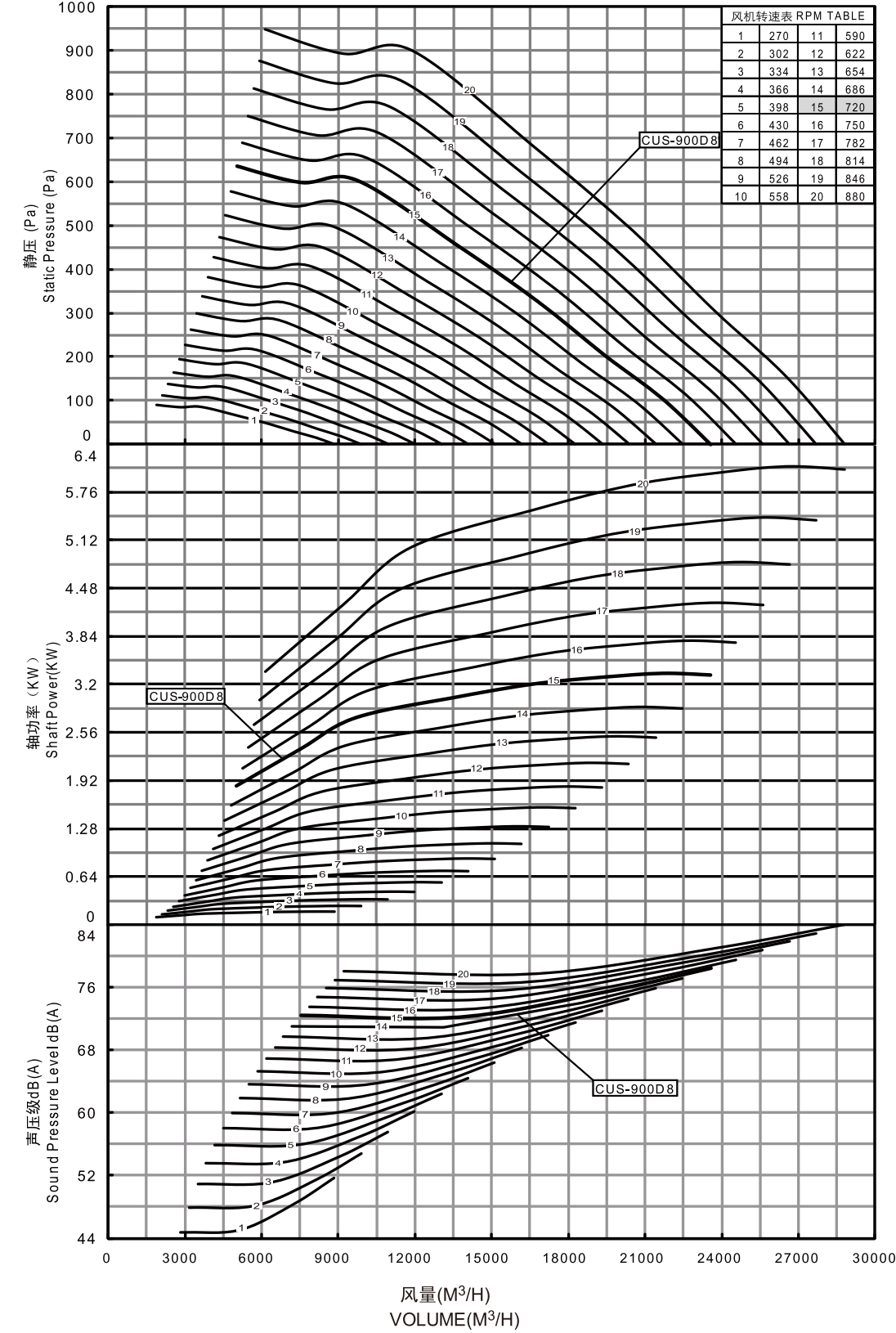
Performance certified is for installation type B - free inlet, ducted outlet. Power rating (kW) does not includes transmission losses. Performance ratings do not include the effects of appurtenances (accessories) . dB(A) A-weighted sound pressure level is based on 11.5 dB sound attenuation per octave band at 1.5m. Note that dB(A) levels are not licensed by AMCA International.

型号: CUS-750
Model: CUS-750



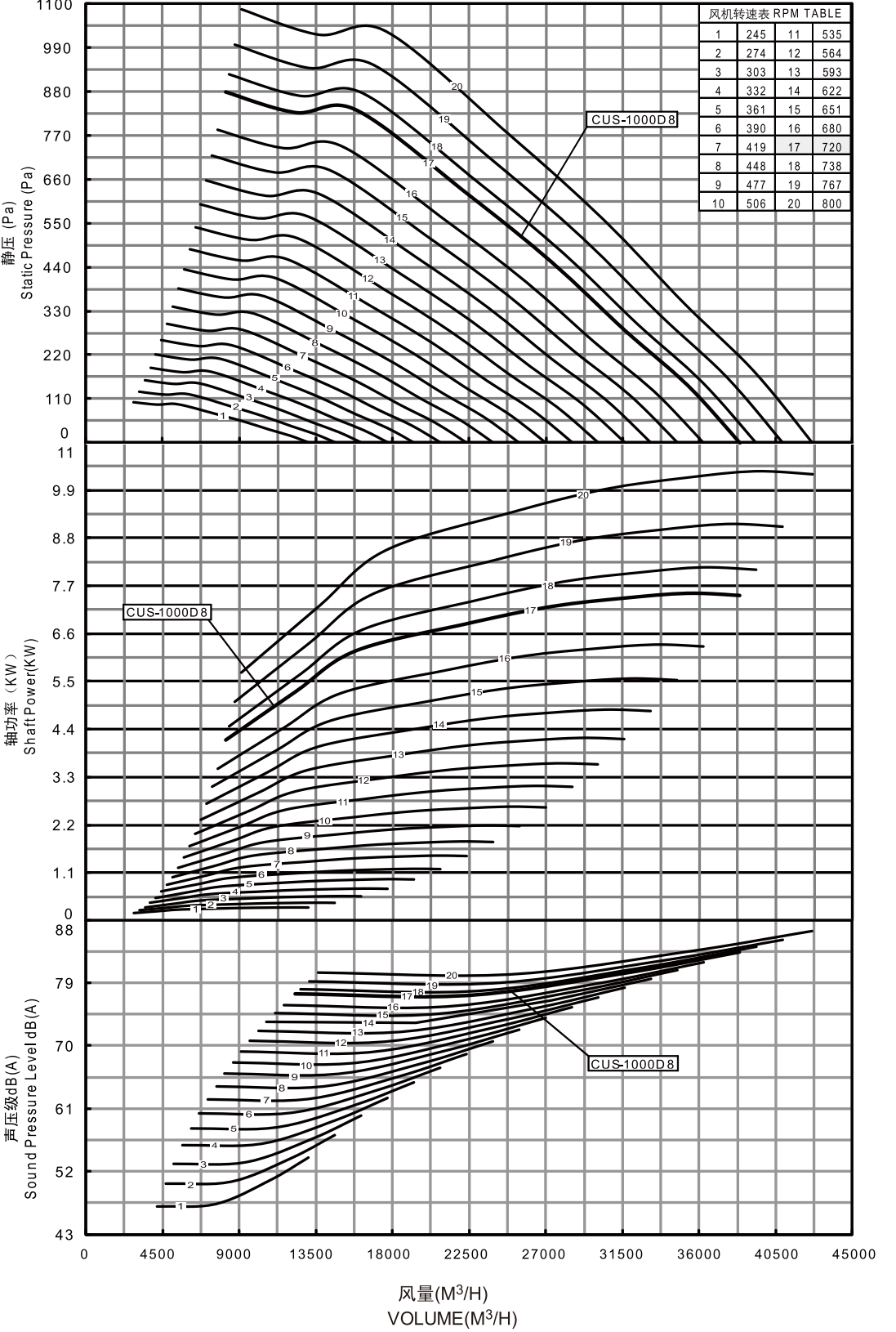
Performance certified is for installation type B - free inlet, ducted outlet. Power rating (kW) does not includes transmission losses. Performance ratings do not include the effects of appurtenances (accessories) . dB(A) A-weighted sound pressure level is based on 11.5 dB sound attenuation per octave band at 1.5m. Note that dB(A) levels are not licensed by AMCA International.

型号: CUS-900
Model: CUS-900



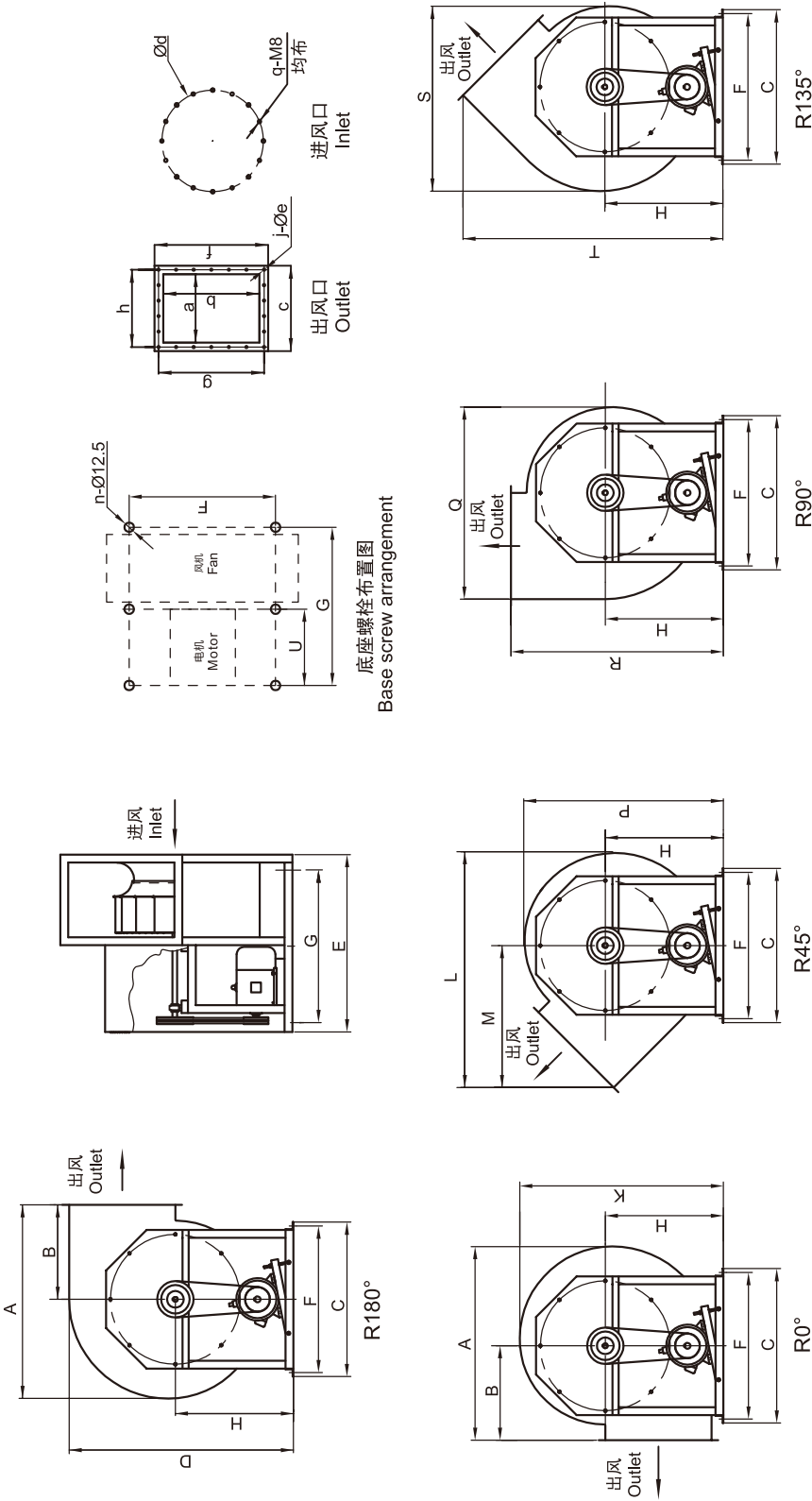
Performance certified is for installation type B - free inlet, ducted outlet. Power rating (kW) does not includes transmission losses. Performance ratings do not include the effects of appurtenances (accessories) . dB(A) A-weighted sound pressure level is based on 11.5 dB sound attenuation per octave band at 1.5m. Note that dB(A) levels are not licensed by AMCA International.

型号: CUS-1000
Model: CUS-1000



Performance certified is for installation type B - free inlet, ducted outlet. Power rating (kW) does not includes transmission losses. Performance ratings do not include the effects of appurtenances (accessories) . dB(A) A-weighted sound pressure level is based on 11.5 dB sound attenuation per octave band at 1.5m. Note that dB(A) levels are not licensed by AMCA International.

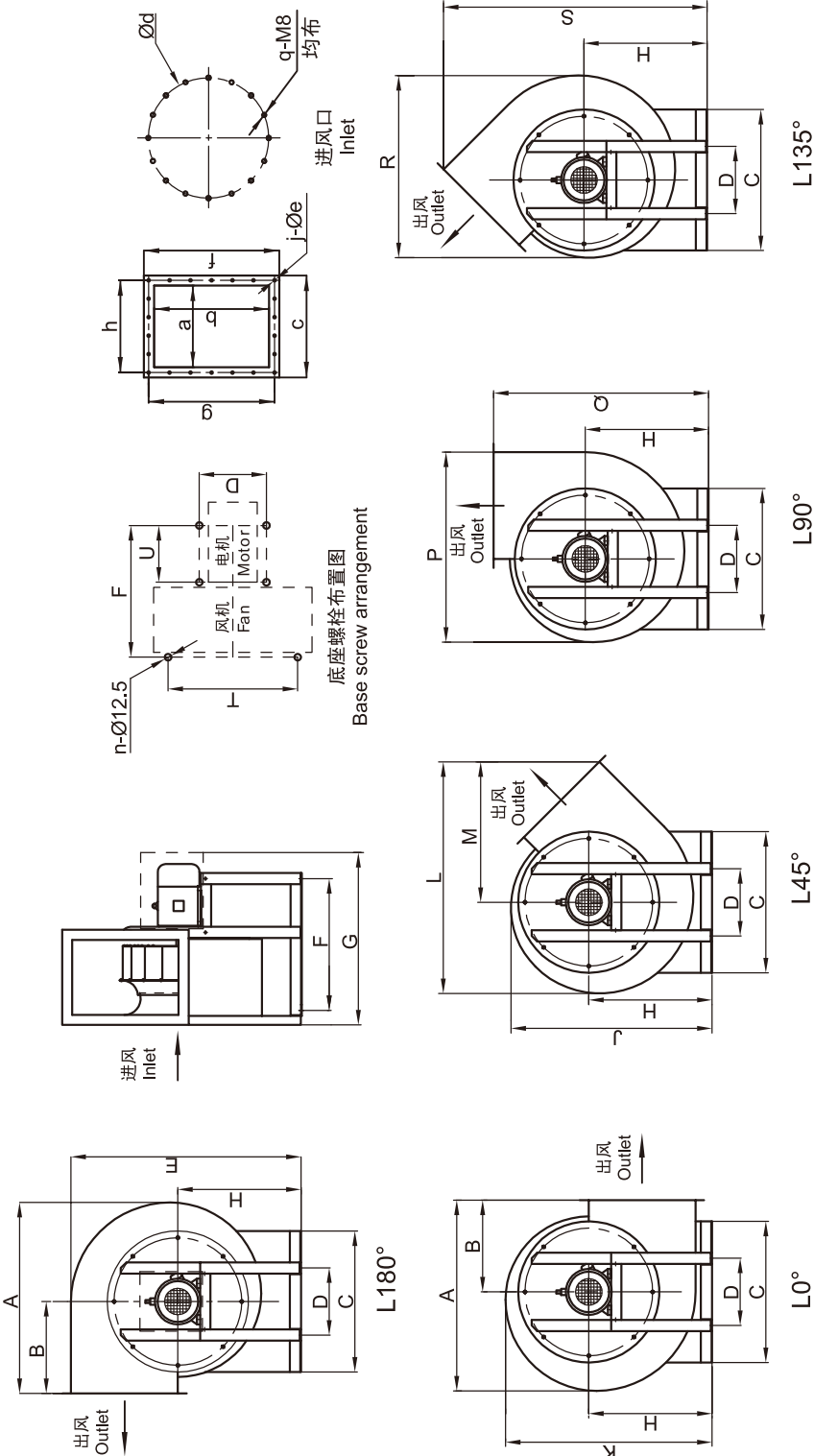
皮带传动
Belt drive



型号 MODEL	A	B	C	D	E	F	G	H	K	L	M	P	Q	R	S	T	U	a	b	c	d	e	f	g	h	j	n	q	重量 Kg
CUS-300	528	250	490	688	625	440	500	380	608	650	398	587	536	630	507	778	0	215	305	295	350	9	385	3x115	3x85	12	4	8	49
CUS-425	730	335	650	938	740	600	575	510	830	900	540	812	748	845	718	1050	0	300	428	380	495	9	505	4x117.5	3x115	14	4	8	76
CUS-500	850	410	730	1028	845	690	710	550	920	1035	628	898	848	960	815	1178	355	335	475	425	570	11	565	5x105	3x128.5	16	6	8	98
CUS-575	965	460	800	1158	900	750	725	615	1040	1168	708	1015	968	1075	930	1323	363	380	540	480	645	11	640	5x119	3x145	16	6	8	150
CUS-675	1102	525	910	1308	1010	860	825	690	1185	1344	808	1155	1113	1215	1070	1498	413	430	615	530	750	11	715	5x134	4x121.5	18	6	16	215
CUS750	1235	600	980	1430	1135	930	950	750	1296	1490	905	1266	1225	1350	1182	1655	475	475	675	575	825	11	775	5x145	5x105	20	6	16	315
CUS-900	1435	700	1130	1628	1208	1080	1000	850	1498	1737	1046	1468	1426	1550	1384	1896	500	545	775	645	975	11	875	6x137.5	5x119	22	6	16	440
CUS1000	1573	765	1230	1780	1368	1180	1125	925	1640	1905	1145	1608	1570	1690	1525	2070	563	595	850	695	1075	11	950	6x150	5x129	22	6	16	550

备注：上表未包含电机重量。 Note: The motor weight is not included in the above table.
风机右旋尺寸和左旋对称，数值不变。 Fan right rotation sizes are the same as left rotation sizes.

直联传动
Direct drive



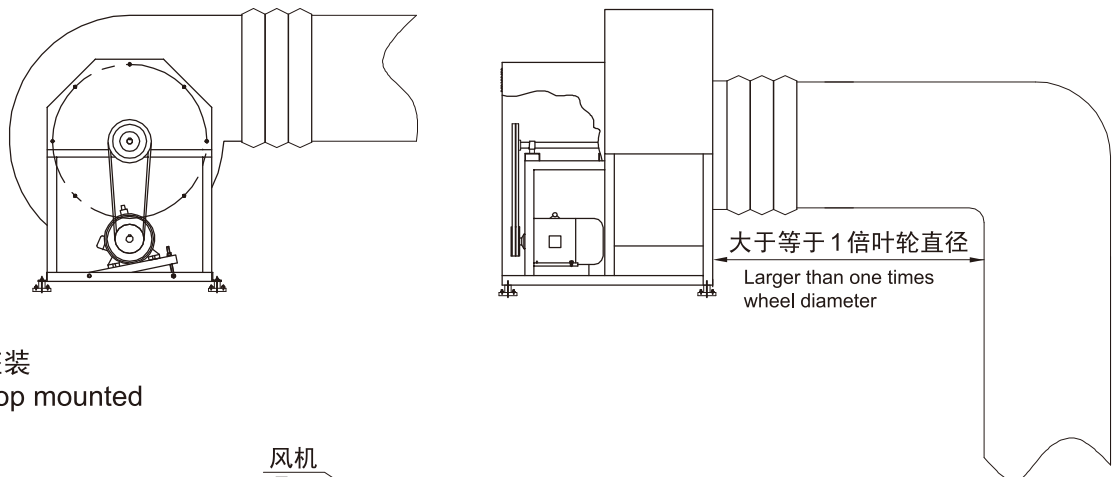
型号 MODEL	A	B	C	D			E	F			G	H	J	K	L	M	P	Q	R	S	T	U		a	b	c	d	e	f	g	h	j	n	q	重量 Kg
				2P	4P	6P		8P	6P	8P																									
CUS-300D	528	250	490	280	230	230	688	390	390	390	550	380	587	608	650	398	536	630	507	778	340	215	305	295	350	9	385	3x115	3x85	12	4	8	46		
CUS-425D	730	335	650	270	250	250	938	460	460	460	650	510	812	830	900	540	748	845	718	1050	500	300	428	380	495	9	505	4x117.5	3x115	14	4	8	72		
CUS-500D	850	410	730	300	270	250	1028	580	500	500	750	550	898	920	1035	628	848	960	815	1178	580	335	475	425	570	11	565	5x105	3x128.5	16	6	8	93		
CUS-575D	965	460	800	300	270	1158	1158	570	570	570	800	615	1015	1040	1168	708	968	1075	930	1323	650	380	540	480	645	11	640	5x119	3x145	16	6	8	140		
CUS-675D	1102	525	910	380	380	1308	1308	730	680	920	690	1155	1185	1344	808	1113	1215	1070	1498	750	270	220	430	615	530	750	11	715	5x134	4x121.5	18	6	16	205	
CUS-750D	1235	600	980	420	420	1430	1430	800	760	1000	750	1266	1296	1490	905	1225	1350	1182	1655	800	300	260	475	675	575	825	11	775	5x145	5x105	20	6	16	300	
CUS-900D	1435	700	1130	490	490	1628	1628	950	1150	850	1468	1498	1737	1046	1426	1550	1384	1896	975	370	545	775	645	975	11	875	6x137.5	5x119	22	6	16	418			
CUS-1000D	1573	765	1230	520	520	1780	1780	1075	1300	925	1608	1640	1905	1145	1570	1690	1525	2070	1075	450	595	850	695	1075	11	950	6x150	5x129	22	6	16	525			

备注：上表未包含电机重量。 Note: The motor weight is not included in the above table.
风机右旋尺寸和左旋对称，数值不变。 Fan right rotation sizes are the same as left rotation sizes.

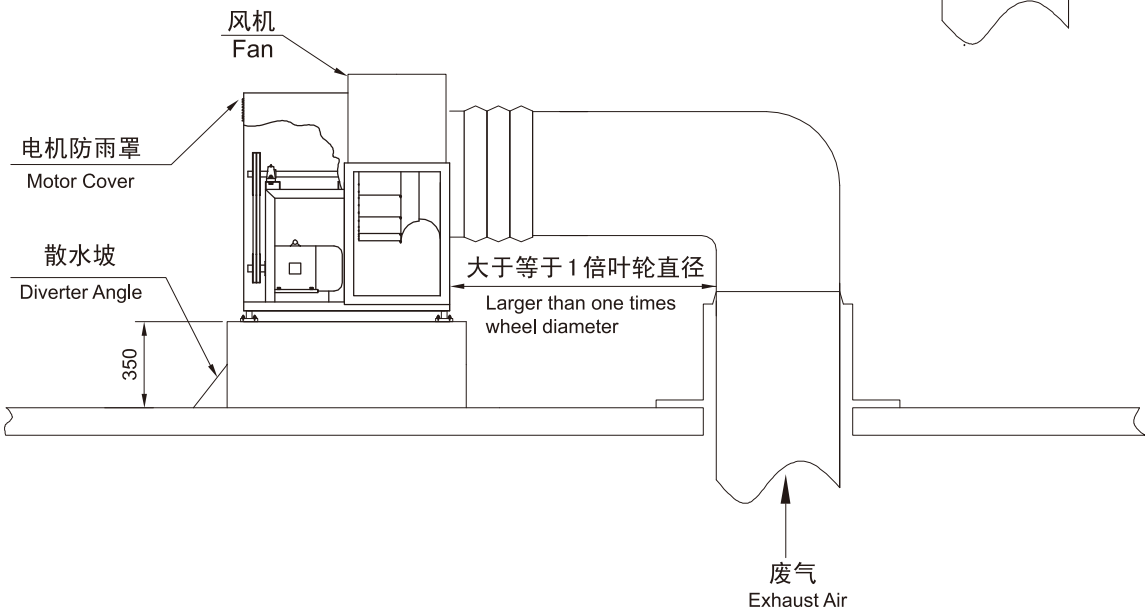
安装指导
Installation guidelines

英飞 CUS 系列风机适用于送风、排风以及回风各种场合。经实践证明，英飞风机能在恶劣的环境下安全可靠地运转。无论是干净的气体还是污浊的油污气体，CUS 系列风机均可使用。
Infinair CUS series fans are suitable for supply, exhaust and return air application. Tests were conducted to assure safe and reliable fans capable of withstanding severe conditions. CUS series fans are designed for application ranging from clean air to contaminated air.

座地安装
Floor mounted

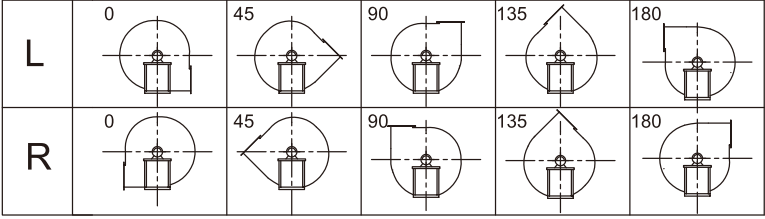


屋顶座装
Roof top mounted



CUS 系列风机适用于酒店、宾馆的厨房排油烟。
安装前，必须检查并清洁风机，确保叶轮能够自由转动。通风机不应相互影响，应能方便的进行维护。拆换叶轮和轴承应有足够空间。室外安装的风机，应选配防雨罩，确保电器设备免受气候影响。
CUS series fans are designed to meet restaurant, hotel kitchen grease.
Fans shall be checked & cleaned before installation to ensure wheels rotate freely.
Ventilations shall not interfere with each other. For easy maintenance a reasonable space shall be left for disassembling & replacing wheels & bearings. Outdoor installed fans shall have weatherhood to make electrical equipment weather-protected.

可选出风方向
Optional discharge



确定风机旋向时观察者应位于电机侧。定货时请务必注明风机旋向，否则可能导致出风方向与设计不一致，造成安装困难。
The rotation is identified from the view of motor side. The fan rotation must be specified before ordering; otherwise the fan is difficult to be installed if the discharge direction is inconsistent with the design.

AMCA: 空气运动与控制协会简介

1. 什么是 AMCA?
AMCA 是一个国际性的、非盈利性的组织，致力于风机、百叶、风阀和其他空气处理设备性能的认证工作。其成员包括了目前世界上主流生产厂家的大多数，并能够提供独立于买卖双方之外的第三方检测认证。除此之外，它还制定了行业内很多非常重要的基础性的标准。

根据 AMCA 宣称，这个组织的任务和宗旨是令通风行业与目前公众事业的发展同步，保证行业健康而稳步地发展。

AMCA 是行业内部一个很有价值的资源，同时也是行业自律的重要体现。

2. AMCA 认证
AMCA 认证保证一个产品系列已经在共同标准的指导下进行了检测，并签署了类似保证书的法律文件，并且生产厂家的样本在付诸印刷之前已经提交给 AMCA 的工作人员并获得其认可。

3. AMCA 声音与空气动力性能印章

对于一个贴有认证印章的产品，必须首先在一个 AMCA 认可的实验室进行检测，通常是由 AMCA 技术人员认证过并拥有证书的但不是位于生产厂商厂内的实验室。为了能够获得贴印章的许可，每一个生产商还必须达到如下七个主要要求：

- (1) 样本的参数一定要按照正确的标准进行检测
- (2) 所有的检测必须在 AMCA 认可的实验室进行
- (3) 检测结果必须交 AMCA 进行校核并存档
- (4) 所有的样本在印刷前必须交 AMCA 认可并存档
- (5) 每三年之后应重新检测
- (6) 通过认证的产品必须同意接受来自竞争对手要求的抽检
- (7) 成员应交纳适当的费用以维持 AMCA 组织的正常运转



并且，这还未结束，一旦获得认证，某一产品应当在任何时候均必须接受竞争对手所要求的、针对样本而非直接检测结果的质疑；一旦发现样本与实际产品性能有所不符，则生产商即使已获得的认证也将被收回。

因此，购买和使用风机的人，应当了解 AMCA 认证印章的价值。

电机重量表
Motor weight table

功率(kW) Power (kW)	电机重量(kg) Motor Weight(kg)			
	2P	4P	6P	8P
0.18	14	13.5	14	16
0.25	14.5	14	14.5	17
0.37	15	14.5	16	24
0.55	15.5	15	17	28
0.75	15	16	22	30
1.1	16	21	24	32
1.5	21	23	32	40
2.2	24	33	41	64
3	33	35	63	78
4	41	41	72	105
5.5	63	65	81	115
7.5	70	76	118	145
11	110	118	145	160

噪音参数 Sound Data

噪音参数 Sound Data

CUS-300

风机转速	静压	风量	声功率 SOUND POWER								声功率级	声压级
			八段倍频程 OCTAVE BANOS									
			1	2	3	4	5	6	7	8		
RPM	Pa	Volume	1	2	3	4	5	6	7	8	LWIA	dB(A)
800	0	1061	55	58	57	60	59	59	49	39	64	52
	31	853	55	58	55	60	59	59	49	39	64	52
	58	635	56	56	53	60	59	59	49	39	64	52
	80	388	56	56	53	59	59	49	39	64	52	
960	0	1273	61	62	63	64	63	64	56	46	69	57
	14	1024	63	62	62	63	63	64	56	46	68	57
	84	762	64	61	60	63	63	64	56	46	68	57
	115	465	64	61	60	62	63	64	56	46	68	57
1022	0	1355	64	64	66	65	65	65	58	48	70	59
	50	1090	66	64	65	65	65	65	58	48	70	58
	95	811	67	63	63	64	65	65	58	48	70	58
	131	495	67	63	63	63	64	65	58	48	70	58
1133	0	1503	68	66	69	68	67	67	62	52	73	61
	61	1208	71	66	69	67	67	67	62	52	72	61
	117	900	72	66	67	66	67	67	62	52	72	61
	160	549	72	66	67	65	67	67	62	52	72	61
1244	0	1650	72	69	73	70	70	69	65	55	75	63
	74	1327	76	69	73	68	70	69	65	55	75	63
	141	988	76	69	71	67	70	69	65	55	75	63
	193	603	76	69	71	67	69	69	65	55	74	63
1355	0	1797	76	71	74	71	72	71	69	59	77	66
	88	1445	80	71	74	70	72	71	69	59	77	65
	168	1076	80	72	72	69	72	71	69	59	77	65
	229	657	80	72	72	68	71	71	69	59	76	65
1450	0	1923	78	73	76	73	74	72	71	61	79	67
	100	1547	83	73	76	71	74	72	71	61	79	67
	192	1151	84	74	74	70	74	72	71	61	78	67
	263	703	83	74	74	70	73	72	71	61	78	67
1577	0	2091	82	75	77	75	76	74	74	64	81	69
	119	1682	87	75	77	73	76	74	74	64	81	69
	227	1252	87	76	75	71	76	74	74	64	81	69
	311	764	87	76	75	71	75	74	74	64	80	69
1688	0	2239	84	77	78	77	77	75	76	67	83	71
	136	1800	90	77	78	75	77	75	76	67	83	71
	260	1340	90	79	76	73	77	75	76	67	82	71
	356	818	89	79	76	73	76	75	76	67	82	71
1799	0	2386	85	79	80	79	79	77	78	69	84	73
	154	1919	91	80	80	77	78	77	78	69	84	73
	296	1428	91	82	78	75	78	77	78	69	84	72
	404	872	90	82	78	75	77	77	78	69	84	72
1910	0	2533	86	82	81	81	80	78	79	71	86	74
	174	2037	92	83	81	80	80	78	79	71	86	74
	333	1517	92	84	80	78	79	78	79	71	85	74
	456	926	91	84	80	78	78	78	79	71	85	74
2021	0	2680	87	84	83	83	81	80	80	73	87	76
	195	2156	93	86	83	82	81	80	80	73	87	76
	273	1605	93	87	82	80	80	80	80	73	87	75
	310	979	92	87	82	80	79	80	80	73	86	75
2132	0	2827	88	86	84	85	82	81	81	75	89	77
	217	2274	94	88	84	84	82	81	81	75	88	77
	415	1693	94	90	84	82	81	81	81	75	88	77
	568	1033	93	89	84	82	80	81	81	75	88	76
2243	0	2975	89	88	86	87	84	83	82	77	90	79
	240	2392	95	91	86	87	83	83	82	77	90	78
	460	1781	95	92	85	85	82	83	82	77	89	78
	629	1087	94	92	85	85	81	82	82	77	89	78
2354	0	3122	90	90	87	89	85	84	83	79	91	80
	264	2511	96	93	87	89	84	84	83	79	91	80
	506	1869	96	94	87	87	83	84	83	79	91	79
	692	1141	95	94	87	87	82	83	83	79	90	79
2465	0	3269	91	92	88	91	86	85	84	80	93	81
	290	2629	97	96	88	90	85	85	84	80	93	81
	555	1957	97	96	88	88	83	85	84	80	92	81
	759	1195	96	96	88	88	83	84	84	80	92	80
2576	0	3416	92	94	89	92	87	86	85	82	94	82
	316	2748	98	98	89	92	85	86	85	82	94	82
	606	2045	98	98	90	90	84	86	85	82	93	82
	829	1248	97	98	90	90	84	85	85	82	93	81
2687	0	3564	92	96	90	92	88	87	86	83	95	83
	344	2866	98	100	90	92	86	87	86	83	95	83
	660	2133	98	100	91	90	85	87	86	83	94	83
	902	1302	97	100	91	90	84	86	86	83	94	82
2798	0	3711	93	97	91	93	88	88	87	85	96	84
	373	2984	99	102	91	93	87	88	87	85	96	84
	715	2222	99	102	92	91	85	88	87	85	95	84
	978	1356	98	102	92	91	85	87	87	85	95	83
2900	0	3846	94	99	92	94	89	89	87	86	97	85
	401	3093	100	104	92	94	88	89	87	86	97	85
	768	2303	100	104	93	92	86	89	87	86	96	85
	1051	1405	99	103	93	92	86	88	87	86	96	84

CUS-425

风机转速	静 压	风 量	声功率 SOUND POWER								声功率级	声压级
			八段倍频程 OCTAVE BANOS									
RPM	Pa	Volume	1	2	3	4	5	6	7	8	LWia	dB(A)
680	0	2643	64	68	66	67	67	64	55	45	71	59
	45	2125	64	68	65	67	67	64	55	45	71	59
	87	1582	65	67	63	67	67	64	55	45	71	59
	118	966	65	66	63	67	67	64	55	45	70	59
720	0	2798	66	69	67	69	68	67	57	47	72	61
	51	2250	66	69	66	69	68	67	57	47	72	61
	97	1675	67	68	64	69	68	67	57	47	72	61
	133	1022	67	67	64	68	68	67	57	47	72	61
808	0	3140	69	71	70	72	70	71	61	51	76	64
	64	2525	69	71	68	72	70	71	61	51	75	64
	122	1880	70	70	66	72	70	71	61	51	75	64
	167	1147	70	69	66	71	70	71	61	51	75	64
872	0	3389	71	73	72	74	72	73	64	54	78	66
	74	2725	71	73	71	73	72	73	64	54	77	66
	142	2029	73	71	69	73	72	73	64	54	77	66
	195	1238	73	71	69	72	72	73	64	54	77	66
960	0	3731	75	76	76	76	74	75	67	57	80	68
	90	3000	76	76	75	75	74	75	67	57	80	68
	172	2233	78	74	73	75	74	75	67	57	80	68
	236	1363	78	74	73	74	74	75	67	57	79	68
1000	0	3886	77	77	77	77	75	76	68	58	81	69
	98	3125	78	77	77	76	75	76	68	58	81	69
	187	2327	80	76	74	75	75	76	68	58	80	69
	256	1420	80	76	74	75	75	76	68	58	80	69
1064	0	4135	79	78	80	78	77	77	71	61	82	71
	111	3325	81	78	79	77	77	77	71	61	82	71
	212	2475	83	78	77	77	77	77	71	61	82	70
	280	1511	82	78	77	76	77	77	71	61	82	70
1128	0	4383	82	80	82	79	78	78	73	63	84	72
	124	3525	84	80	81	78	78	78	73	63	84	72
	238	2624	85	79	79	77	78	78	73	63	83	72
	326	1602	85	79	79	77	78	78	73	63	83	72
1192	0	4632	84	81	84	80	80	79	75	65	85	74
	139	3725	87	81	84	79	80	79	75	65	85	74
	266	2773	88	81	82	78	80	79	75	65	85	73
	364	1693	88	81	82	78	79	79	75	65	85	73
1256	0	4881	86	82	86	82	81	80	77	67	87	75
	154	3925	90	82	86	80	81	80	77	67	86	75
	295	2922	90	83	84	79	81	80	77	67	86	75
	404	1784	90	83	84	79	81	80	77	67	86	74
1320	0	5130	88	84	87	83	82	81	79	69	88	76
	170	4125	92	84	87	81	82	81	79	69	88	76
	326	3071	93	84	85	80	82	81	79	69	87	76
	446	1874	92	84	85	80	82	81	79	69	87	76
1384	0	5378	90	85	87	84	84	82	80	70	89	77
	187	4325	94	85	87	82	84	82	80	70	89	77
	358	3220	95	86	86	81	84	82	80	70	88	77
	490	1965	94	86	85	81	83	82	80	70	88	77
1450	0	5635	92	86	88	85	85	83	82	72	90	79
	205	4532	97	86	88	83	85	83	82	72	90	78
	393	3373	97	87	86	82	85	83	82	72	90	78
	538	2059	96	87	86	81	84	83	82	72	89	78
1512	0	5876	94	87	89	86	86	84	83	73	91	80
	223	4725	99	87	89	84	86	84	83	73	91	80
	428	3518	99	88	87	82	86	84	83	73	91	79
	585	2147	98	88	87	82	85	84	83	73	90	79
1576	0	6124	95	88	90	87	87	85	85	75	92	81
	242	4925	101	88	90	85	87	85	85	75	92	81
	465	3667	101	90	88	83	87	85	85	75	92	80
	636	2238	100	90	88	83	86	85	85	75	92	80
1640	0	6373	97	89	90	87	88	86	86	76	93	82
	263	5126	103	89	90	86	88	86	86	76	93	82
	503	3816	103	91	88	84	88	86	86	76	93	81
	688	2329	102	91	88	83	87	86	86	76	93	81
1704	0	6622	98	90	91	89	89	87	87	78	94	83
	283	5326	104	91	91	87	89	87	87	78	94	83
	543	3964	104	92	89	85	89	87	87	78	94	82
	743	2420	103	92	89	85	88	87	87	78	94	82
1768	0	6871	99	92	92	90	90	88	88	79	95	84
	305	5526	105	92	92	88	89	88	88	79	95	84
	585	4113	105	94	91	86	89	88	88	79	95	83
	800	2511	104	94	91	86	88	87	88	79	94	83
1832	0	7119	99	93	93	91	90	88	89	80	96	85
	328	5726	105	94	93	90	88	89	80	96	84	
	628	4262	105	96	92	88	90	88	89	80	96	84
	859	2601	104	96	92	88	89	88	89	80	95	84
1900	0	7383	100	95	94	93	91	89	90	82	97	86
	352	5938	106	96	94	91	91	89	90	82	97	85
	675	4420	106	98	93	89	90	89	90	82	96	85
	924	2698	105	97	93	89	90	89	90	82	96	85

噪音参数 Sound Data

噪音参数 Sound Data

CUS-675

风机转速	静 压	风 量	声功率 SOUND POWER								声功率级	声压级
			八段倍频程 OCTAVE BANOS									
RPM	Pa	Volume	1	2	3	4	5	6	7	8	LWIA	dB(A)
380	0	6473	65	67	67	66	62	56	47	38	67	55
	42	5318	63	65	67	65	59	52	42	32	66	54
	80	3923	62	64	66	65	58	49	39	29	65	53
	106	2617	62	64	66	64	57	48	37	25	64	52
426	0	7257	69	70	70	69	65	60	51	42	70	59
	52	5961	67	68	69	69	63	56	46	36	69	57
	101	4387	65	67	69	68	61	53	43	33	68	57
	134	2934	65	67	68	68	61	52	41	30	67	56
472	0	8040	72	73	72	72	67	63	55	45	73	61
	64	6605	70	71	71	72	66	60	50	40	72	60
	124	4872	68	70	71	72	65	57	47	37	71	60
	164	3251	67	70	70	71	65	56	45	34	70	59
518	0	8824	75	75	74	75	70	67	58	49	76	64
	77	7249	73	73	73	75	69	63	53	43	75	63
	149	5347	70	72	72	75	68	60	50	40	74	62
	198	3568	70	72	72	73	68	60	48	37	73	62
564	0	9607	77	77	76	77	72	69	61	52	78	66
	92	7893	75	75	75	77	71	66	56	46	77	65
	177	5822	73	74	74	77	71	63	53	43	76	65
	234	3885	72	74	74	76	70	63	52	40	76	64
610	0	10381	79	78	78	79	75	71	63	54	80	68
	107	8536	77	76	77	78	74	68	59	49	79	67
	207	6297	75	75	76	78	73	66	56	46	78	67
	274	4202	74	75	76	77	73	65	55	43	78	66
656	0	11175	81	80	80	80	77	73	66	57	82	70
	124	9180	79	78	79	80	76	70	62	52	81	69
	240	6772	77	77	78	80	75	68	59	49	80	69
	317	4518	76	77	78	79	75	68	57	46	79	68
720	0	12265	83	83	83	82	79	76	69	60	84	73
	150	10076	82	81	82	82	79	73	65	55	83	72
	289	7432	79	80	81	82	78	71	62	52	82	71
	382	4959	79	79	80	81	78	71	61	50	82	70
748	0	12742	84	84	84	83	81	77	70	61	85	74
	162	10468	83	82	83	83	80	74	66	56	84	73
	312	7721	81	81	82	82	80	72	63	53	83	72
	412	5152	80	80	81	82	79	72	62	51	83	71
794	0	13525	85	86	85	85	82	78	73	64	87	75
	182	11111	84	84	84	84	82	76	68	59	86	74
	351	8186	82	82	83	83	81	74	66	56	85	74
	464	5469	82	82	83	83	81	74	65	53	84	73
840	0	14309	87	88	87	86	84	80	75	66	88	77
	204	11755	86	86	85	85	84	78	70	61	87	76
	393	8671	84	84	85	85	83	76	68	58	87	75
	519	5786	83	84	84	84	82	76	67	55	86	75
886	0	15092	88	89	88	87	85	81	76	67	90	78
	227	12399	87	87	87	86	85	79	72	62	89	77
	437	9146	85	85	86	86	85	78	70	60	88	77
	578	6103	85	85	86	85	84	78	69	57	87	76
932	0	15876	89	91	90	88	87	82	78	69	91	80
	251	13042	89	89	88	87	87	81	74	64	90	79
	484	9621	87	87	87	87	87	80	71	61	90	78
	640	6419	86	86	87	86	86	79	71	59	89	77
960	0	16353	90	92	91	89	88	83	79	70	92	80
	266	13434	89	90	89	88	88	82	75	65	91	80
	513	9910	88	87	88	87	88	81	72	62	90	79
	679	6612	87	87	88	87	86	80	72	61	90	78
1024	0	17443	91	94	92	90	90	85	81	72	94	82
	303	14330	91	92	91	89	90	84	78	68	93	81
	584	10570	89	89	90	88	90	83	75	65	92	81
	772	7053	89	89	89	88	88	82	74	63	92	80
1070	0	18227	92	95	93	91	91	86	83	74	95	83
	331	14974	92	93	92	90	91	85	79	69	94	83
	638	11045	91	90	91	89	91	84	76	66	94	82
	843	7370	90	90	91	89	90	84	76	65	93	81
1116	0	19010	93	96	94	92	92	87	84	75	96	84
	360	15617	93	94	92	91	92	86	80	71	95	84
	694	11520	91	92	91	90	92	85	78	68	95	83
	917	7687	91	91	91	90	91	85	77	66	94	82
1162	0	19794	94	97	95	93	93	88	85	77	97	85
	390	16261	94	95	93	92	93	88	82	72	96	85
	752	11995	92	93	92	91	93	87	79	69	95	84
	994	8084	92	92	92	91	92	86	79	68	95	83
1208	0	20578	94	98	96	94	94	89	86	78	98	86
	121	16905	94	96	94	93	94	89	83	74	97	85
	813	12470	93	94	93	92	93	88	80	71	96	85
	1074	8320	92	93	93	92	92	88	80	69	96	84
1250	0	21293	95	99	96	95	94	90	87	79	99	87
	451	17493	95	97	94	94	94	90	84	75	98	86
	870	12903	93	95	93	93	94	89	81	72	97	86
	1150	8510	93	94	93	93	93	89	81	71	97	85

CUS-750

风机转速	静 压	风 量	声功率 SOUND POWER								声功率级	声压级
			八段倍频程 OCTAVE BANOS									
RPM	Pa	Volume	1	2	3	4	5	6	7	8	LWia	dB(A)
330	0	8244	72	68	65	64	62	60	59	57	68	56
	58	5770	67	63	60	59	55	51	48	44	61	49
	92	2976	65	61	57	55	50	46	41	37	56	45
	93	0	65	61	57	55	50	46	41	37	56	45
	0	9194	74	72	68	67	65	62	61	60	70	59
368	73	5435	69	67	63	62	58	54	50	47	64	52
	114	3319	67	64	60	58	54	49	44	40	59	48
	115	0	67	64	60	58	54	49	44	40	59	48
406	0	10143	76	75	70	69	67	65	63	62	73	61
	88	7099	71	70	65	64	61	57	53	49	66	55
	139	3662	70	67	62	60	57	52	47	42	62	50
	140	0	70	67	62	60	56	51	47	42	62	50
	0	11092	78	77	72	71	69	67	66	64	75	63
444	106	7764	73	72	67	66	64	59	55	52	68	57
	166	4004	72	70	64	62	59	54	49	45	64	53
	167	0	72	70	64	62	59	54	49	45	64	53
482	0	12042	77	80	74	73	72	69	67	66	77	65
	125	8428	74	75	69	68	66	61	58	54	71	59
	196	4347	74	72	66	65	61	56	52	47	67	55
	197	0	74	72	66	64	61	56	52	47	67	55
	0	12991	79	82	76	75	73	71	69	68	79	67
520	145	9093	75	76	71	70	68	63	60	56	73	61
	228	4690	76	74	69	66	64	59	54	49	69	57
	230	0	76	74	69	66	63	58	54	49	69	57
558	0	13940	80	83	78	76	75	73	71	70	81	69
	167	9757	77	78	73	72	70	66	62	58	74	63
	263	5032	78	76	71	68	65	61	56	51	70	59
	265	0	78	76	71	68	65	61	56	51	70	59
	0	14890	82	84	80	78	77	74	72	71	82	71
596	190	10422	79	79	76	73	71	67	63	60	76	65
	300	5375	79	77	73	70	67	62	58	53	72	61
	302	0	79	77	73	70	67	62	58	53	72	61
634	0	15639	83	86	82	79	78	76	74	73	84	72
	215	11086	80	81	77	75	73	69	65	61	78	66
	339	5718	81	79	74	71	69	64	60	55	74	62
	341	0	81	79	74	71	69	64	60	55	74	62
	0	16788	84	87	84	81	80	77	75	74	85	74
672	242	11751	82	82	79	76	74	71	67	63	79	68
	381	6061	82	80	76	73	70	66	61	57	75	64
	384	0	82	80	76	72	70	66	61	57	75	64
	0	17987	86	89	86	82	81	79	77	76	87	75
	278	12590	83	83	81	77	76	73	69	65	81	69
720	437	5494	84	82	78	74	72	68	63	58	77	66
	440	0	84	82	78	74	72	68	63	58	77	66
	0	18687	87	89	87	83	82	80	78	77	88	76
	300	13080	84	84	82	78	77	74	70	66	82	71
	472	6746	85	83	80	75	73	69	64	60	78	67
786	475	0	85	83	80	75	73	69	64	60	78	67
	0	19636	88	90	89	84	83	81	79	78	89	77
	331	13744	86	85	84	79	78	75	71	67	83	72
	521	7089	86	84	81	76	74	70	65	61	80	68
	525	0	86	84	81	76	74	70	65	61	80	68
824	0	20586	89	92	90	85	85	83	80	90	79	
	364	14409	87	86	85	80	80	77	72	68	85	73
	573	7431	87	85	83	77	76	72	67	62	81	69
	577	0	87	85	83	77	76	72	67	62	81	69
	0	21535	90	92	92	86	86	84	81	80	91	80
862	398	15073	88	87	87	81	81	78	73	70	86	74
	627	7774	88	86	84	79	77	73	68	64	82	71
	631	0	88	86	84	79	77	73	68	64	82	71
	0	22484	91	91	93	87	87	85	82	81	92	81
	434	15738	89	87	88	82	82	79	74	71	87	75
900	683	8117	89	87	85	80	78	74	69	65	83	72
	688	0	89	87	85	80	78	74	69	65	83	72
	0	23434	92	92	94	88	88	86	83	82	93	82
	472	16402	90	88	89	83	83	80	76	72	88	76
	742	8460	90	88	87	81	79	76	71	66	84	73
938	747	0	90	88	87	81	79	76	71	66	84	73
	0	23983	92	92	95	88	88	87	84	82	94	82
	494	16787	90	88	90	84	83	81	76	73	88	77
	778	8658	91	89	87	81	80	76	71	67	85	74
	783	0	91	89	87	81	79	76	71	67	85	74
1014	0	25332	94	93	96	90	89	88	85	84	95	84
	551	17731	92	90	91	86	85	82	78	74	90	78
	868	9145	92	90	88	83	81	78	73	68	87	75
	873	0	92	90	88	83	81	78	73	68	86	75
	0	26321	94	94	97	91	90	89	86	85	96	85
1050	591	18366	92	91	92	87	85	83	79	75	91	79
	930	9470	93	91	89	84	82	79	74	69	87	76
	937	0	93	91	89	84	82	79	74	69	87	76

产品技术标准
Product Specification

第一节：质量标准

单进风离心风机应按照 AMCA 210 和 300 标准进行检测并通过其认证，每台风机出厂时均应贴有 AMCA 空气动力性能与声音的印章。生产企业应当通过 ISO9001:2000 认证。
Section1:Quality standards.
SWSI centrifugal fans shall be tested and approved in accordance to AMCA standard 210 & 300, each fan shall have AMCA Sound & Air Performance Seal. The manufacturer shall be certified by ISO9001:2000.

第二节：风机类型

风机应为皮带驱动或直联驱动型。应采用铝制后倾离心式叶轮，叶轮进口文丘里管截面应呈圆弧型确保与风机入口文丘里管过渡顺畅。叶轮应经过静态和动态平衡, 达到国际标准 ISO 1940 G2.5 水平。
Section 2: Fan Type
The fan shall be belt drive / direct drive. Fan wheels are centrifugal, backward inclined, and constructed of aluminum. The fan wheel Venturi shall have round curved section to smooth the air flowing to the wheel cone. The wheel shall be balancing tested statically and dynamically to level G2.5 as per ISO standard No.1940.

第三节：风机外壳材料

风机外壳应为钢制，其厚度应足以保证能够承受驱动机构和电机的重量。风机蜗壳应采用连续焊接结构。风机表面应经过碱洗和磷化，并静电喷涂环氧树脂 [选项：客户指定颜色]。
Section 3: Fan Housing Material
The casing shall be constructed of steel; the thickness shall be adequate to support drive and motor. The scroll shall be fully welded. The fan surface shall be alkali cleaned and phosphated, electrostatically epoxy powder applied [options: colour changes are available].

第四节：驱动装置 [仅适用于皮带驱动的类型]

轴：风机轴应通过均质炉进行热处理达到硬度 HB370 等级，其表面应进坚膜防腐处理，并且连同叶轮进行整体动平衡。其设计运行速度应至少超过风机最大运行速度 25%。
皮带轮：皮带轮的尺寸应当按照驱动功率的 150% 选型，皮带轮应当是铸铁的，键连接到轴上。电机皮带轮应当可调节以便进行现场的系统平衡。皮带轮应当配有退拔形式的轴套进行固定以便于拆卸。
轴承：应采用两个轴承支撑风机轴，以避免振动直接施加于电机之上。在样本公布的最大转速下，轴承寿命为（L-10）80,000 小时。轴承类型应是永久密封的，可润滑的枕块型滚珠金属轴承。
支撑：驱动装置应当使用厚的经过粉末涂装防腐的钢板支撑, 并安装在减震器之上。皮带松紧应通过可调节电机底座进行，其设计应确保风机轴与电机轴的平行度。
防护罩： 皮带驱动风机的标准配置应包含轴/轴承护罩和皮带护罩各一只。当风机设计为室外安装时则应配防雨罩。防雨罩必须完全遮蔽电机及其他驱动机构，以确保运转部件的寿命。

Section 4: Drive [Apply to belt drive model only]

Shaft: fan shaft shall be heat treated through soaking furnace to the hardness level of HB370, and the surface shall be hard film corrosion treated. The fan shaft shall be balanced together with the wheel. And the shaft design speed shall at least exceed 25% of the maximum fan operation speed.
Pulleys: fan pulleys shall be sized for a minimum of 150% of driven horsepower. Pulleys shall be of cast iron type, keyed and securely attached to the wheel and motor shafts. Motor pulleys shall be adjustable for final system balancing. Conical (QD) type bushings shall be equipped for easy removal of the pulleys.

Bearings: bearings shall be selected for a minimum (L-10) life in excess of 80,000 hours at maximum cataloged operating speed. Bearing type shall be permanently sealed, re-lubricable pillow block metal ball bearings.
Drive support: drive assemblies shall be supported by heavy gauge powder coated steel, mounted on vibration isolators. The belt tension shall be adjusted through motor support plate, the design shall make sure the fan shaft and motor shaft is always parallel. Protection cover: A shaft/bearing cover and a belt cover shall be provided as standard configuration for indoor application. If the fan is outdoor installed, the motor and other drive parts shall be covered by weatherhood to assure lasting durability.

第五节：电机

电机应与风机负载紧密配合，IP54，绝缘等级F。电机轴承应为滚珠轴承并且可润滑。电机和驱动机构应置于气流之外, 以避免气流中的油脂或灰尘的堆积。
Section 5: Motor
Motor shall be carefully matched to the fan load, IP 54, and insulation class F. The motor bearings shall be re-lubricable ball type. Motor and drives shall be mounted on vibration isolators, and out of the air stream to avoid grease or dirt accumulation.

第六节：标准结构

风机应符合 AMCA 规定的 Spark B 防爆结构，叶轮与进风口均为铝制。
检修门：蜗壳必须配有检修门以便清除进入风机内部的异物。
风机应安装在稳定的水平面上，通过减振器与平台接触，应无须使用预埋方式固定。
Section 6: Structure
The fan shall be AMCA standard spark B construction. The wheel and inlet shall be aluminum.
Access door: an access door must be provided to remove possible debris inside of the scroll.
Installation: the fan shall be installed on a stable level platform via vibration isolators. Any pre-embedded fixing devices shall not be required.

第七节：铭牌

永久固定的铝制标牌上应标有清晰可辨的风机编号，型号和产品序列号（即每台机器的唯一身份证明），从而可保证客户方便地查询配件的历史记录。
Section 7: Nameplate
Permanently fixed aluminum nameplate shall be fixed on fan body clearly display fan mark, product model and serial number. The serial number shall be a unique ID for each fan, so that the customer can use this number to find out the parts used to build this fan.

第八节：可接受供货商

可接受供货商：英飞或类似产品。设计基于英飞 CUS 型号。
Section 8: Acceptable manufacturers
Acceptable manufacturers: INFINAIR or equivalent. Design based on INFINAIR model CUS.

USGBC：美国绿色建筑委员会简介

Introduction of United States Green Building Committee

1. 什么是USGBC?

USGBC全称为美国绿色建筑委员会（The U.S. Green Building Council），全美国唯一一个在环保建筑方面代表整个建筑行业的非营利性（NPO）机构。其会员都是来自于行业中各种类型公司的领袖企业。其宗旨是整合建筑业各机构、推动绿色建筑和建筑的可持续发展、引导绿色建筑的市场机制、推广并教育建筑业主、建筑师、建造师的绿色实践。

What is USGBC?

USGBC is widely known as the United States Green Building Council, the only non-profit (NPO) institution on behalf of the environmental protection construction in the whole construction industry. Its members are made up of leading enterprises from various sectors. Its purpose is to integrate the construction industry agencies, promote sustainable development of green building and construction, guide market mechanism of green building, promote and educate building owners, architects green practice.

2. 什么是LEED认证?

美国绿色建筑委员会（USGBC）在1995年建立了一套自愿性的国家标准LEED（Leadership in Energy and Environmental Design——领导型的能源与环境设计），该体系用于开发高性能的可持续性建筑，进行绿色建筑的评级。整个项目包括培训、专业人员认可、提供资源支持和进行建筑性能的第三方认证等多方面的内容。

What is LEED certificate?

United States Green Building Committee (USGBC) established a set of voluntary national standards LEED（Leadership in Energy and Environmental Design）in 1995. The system is applied to develop sustainable construction of high performance for green building ratings. The entire project includes training, professional recognition, resources support, the third-party certification of construction performance.

3. LEED认证价值

LEED属于第三方认证，在技术和管理上保持高度的权威性：LEED认证体系是根据如ASHRAE（美国采暖空调工程师学会）标准的深入定量分析，使建筑的设计和制作过程更趋于可控化、可实践性；并能提高绿色建筑在当地市场的声誉及取得优质的物业估值，从而推动市场转型，形成良性循环。

Certification Value of LEED

LEED is a rating system certified by third party, maintaining a high degree of authority on technology and management. LEED certification system is a kind of in-depth quantitative analysis based on such as ASHRAE (American Society of Heating Air Conditioning Engineers) standard, which makes design and construction production process tend to be more controllable and practical. That increases green buildings' reputation in the local market and gain excellent valuation of property quality, thus promoting market transition and forming a virtuous circle.

LEED评估体系

所有的子系统的评估指标均有对室内环境空气质量的评分要求。英飞作为USGBC的会员，我们生产的通风设备，可以更优质高效地解决室内空气通风问题。提升空气质量，并为客户提供整体的室内空气质量提升解决方案，帮助客户获得更高的评估得分，顺利通过LEED认证。

LEED evaluation system

All evaluation indicators in subsystems of LEED have requirements on assessment of air quality indoors. As a member of USGBC, our ventilation equipments provide better solution to the problem of air ventilation indoors. INFINAIR promises you the followings: Improve air quality, provide the overall indoor air quality enhancing solutions, and help customers get a higher assessment scores and successfully pass LEED certification.

飞鹰服务
Eagle Service

