



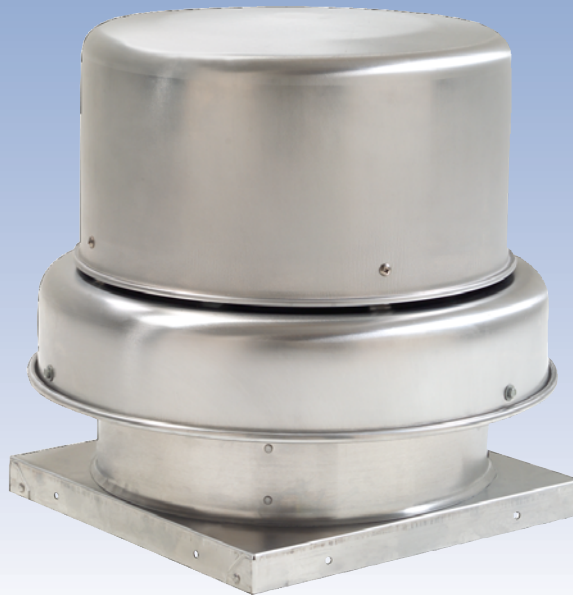
Axial Roof Fans Series A Direct and Belt Drive

Models AE and AS

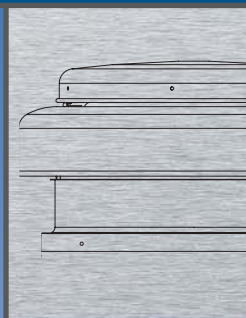


Greenheck Fan Corporation certifies that the Models AE and AS fans shown herein are licensed to bear the AMCA seal. The ratings shown are based on tests and procedures performed in accordance with AMCA Publication 211 and AMCA Publication 311 and comply with the requirements of the AMCA Certified Ratings Program. The certified ratings for Models AS and AE are shown on pages 2 to 3.

Model ABE



Greenheck Fan Corporation certifies that the ABE models shown herein are licensed to bear the AMCA Seal. The ratings shown are based on tests and procedures performed in accordance with AMCA Publication 211 and comply with the requirements of the AMCA Certified Ratings Program. The certified ratings for Model ABE are shown on pages 4 to 7.



BUILDING VALUE IN AIR.

Model AE 10-24

Direct Drive

| Model Number | HP (Size) | Fan RPM | | CFM / Static Pressure in Inches WG | | | | | | | | | |
|---------------|-----------|---------|-------|------------------------------------|-------|-------|-------|-------|-------|-------|-------|-------|-------|
| | | | | 0 | 0.10 | 0.125 | 0.20 | 0.25 | 0.375 | 0.50 | 0.625 | 0.75 | 1.0 |
| AE-10-420-A8 | 1/8 | 1750 | CFM | 550 | 475 | 465 | 409 | 347 | 255 | 189 | | | |
| | | | BHP | 0.025 | 0.03 | 0.031 | 0.035 | 0.038 | 0.044 | 0.05 | | | |
| | | | Sones | 9.6 | 10.4 | 10.5 | 11.9 | 13.2 | 12.0 | 16.8 | | | |
| AE-12-433-B6 | 1/6 | 1140 | CFM | 1014 | 853 | 803 | 458 | 376 | 144 | | | | |
| | | | BHP | 0.03 | 0.036 | 0.037 | 0.039 | 0.044 | 0.052 | | | | |
| | | | Sones | 5.1 | 5.1 | 5.1 | 7.0 | 7.4 | 8.6 | | | | |
| AE-12-433-A4 | 1/4 | 1750 | CFM | 1556 | 1460 | 1437 | 1355 | 1291 | 1055 | 672 | 538 | 386 | |
| | | | BHP | 0.107 | 0.112 | 0.115 | 0.125 | 0.131 | 0.135 | 0.146 | 0.165 | 0.176 | |
| | | | Sones | 9.0 | 8.9 | 8.8 | 8.9 | 8.9 | 10.5 | 14.5 | 15.0 | 15.7 | |
| AE-14-438-B6 | 1/6 | 1140 | CFM | 1601 | 1381 | 1311 | 1092 | 925 | 626 | 273 | | | |
| | | | BHP | 0.093 | 0.1 | 0.102 | 0.098 | 0.1 | 0.111 | 0.119 | | | |
| | | | Sones | 8.2 | 7.6 | 7.5 | 8.0 | 8.4 | 9.6 | 10.7 | | | |
| AE-14-438-A5 | 1/2 | 1750 | CFM | 2457 | 2332 | 2298 | 2186 | 2093 | 1875 | 1603 | 1381 | 1244 | 716 |
| | | | BHP | 0.337 | 0.342 | 0.345 | 0.357 | 0.365 | 0.369 | 0.355 | 0.369 | 0.393 | 0.41 |
| | | | Sones | 16.8 | 16.4 | 16.3 | 16.2 | 16.2 | 16.1 | 19.2 | 19.5 | 18.4 | 22 |
| AE-16-428-B6 | 1/6 | 1140 | CFM | 1999 | 1817 | 1764 | 1563 | 1418 | 904 | 682 | | | |
| | | | BHP | 0.092 | 0.103 | 0.108 | 0.119 | 0.124 | 0.127 | 0.14 | | | |
| | | | Sones | 10.5 | 9.2 | 9.0 | 8.6 | 8.4 | 12.2 | 11.6 | | | |
| AE-16-428-A5 | 1/2 | 1750 | CFM | 3068 | 2958 | 2928 | 2834 | 2771 | 2590 | 2339 | 2112 | 1686 | 1257 |
| | | | BHP | 0.334 | 0.348 | 0.352 | 0.367 | 0.377 | 0.413 | 0.435 | 0.452 | 0.448 | 0.478 |
| | | | Sones | 17.9 | 17.2 | 17.1 | 16.4 | 16.1 | 15.7 | 15.5 | 15.2 | 25 | 21 |
| AE-18-433-B3 | 1/3 | 1140 | CFM | 2982 | 2713 | 2645 | 2423 | 2264 | 1669 | 1276 | 881 | 499 | |
| | | | BHP | 0.249 | 0.266 | 0.27 | 0.28 | 0.286 | 0.285 | 0.298 | 0.319 | 0.346 | |
| | | | Sones | 11.7 | 11.2 | 11.1 | 11.2 | 11.4 | 14.8 | 14.4 | 15.0 | 17.1 | |
| AE-18-433-A10 | 1 | 1750 | CFM | 4578 | 4395 | 4349 | 4224 | 4141 | 3908 | 3660 | 3357 | 2935 | 2327 |
| | | | BHP | 0.902 | 0.924 | 0.93 | 0.953 | 0.968 | 0.995 | 1.02 | 1.041 | 1.039 | 1.045 |
| | | | Sones | 28 | 28 | 28 | 29 | 29 | 29 | 28 | 28 | 29 | 31 |
| AE-20-430-B5 | 1/2 | 1140 | CFM | 3871 | 3606 | 3531 | 3300 | 3100 | 2301 | 1925 | 1313 | | |
| | | | BHP | 0.258 | 0.282 | 0.289 | 0.305 | 0.318 | 0.331 | 0.361 | 0.378 | | |
| | | | Sones | 11.3 | 10.9 | 10.9 | 11.2 | 11.7 | 13.7 | 16.8 | 15.7 | | |
| AE-20-430-A15 | 1½ | 1750 | CFM | 5943 | 5785 | 5745 | 5605 | 5507 | 5260 | 5007 | 4650 | 4246 | 3295 |
| | | | BHP | 0.932 | 0.967 | 0.975 | 1.006 | 1.027 | 1.075 | 1.113 | 1.169 | 1.211 | 1.238 |
| | | | Sones | 23 | 22 | 22 | 22 | 23 | 23 | 25 | 24 | 25 | 35 |
| AE-24-422-B5 | 1/2 | 1140 | CFM | 5091 | 4782 | 4703 | 4452 | 4277 | 3813 | 3279 | 2700 | 2252 | |
| | | | BHP | 0.521 | 0.541 | 0.546 | 0.563 | 0.577 | 0.6 | 0.625 | 0.625 | 0.641 | |
| | | | Sones | 17.2 | 14.2 | 13.9 | 13.7 | 13.6 | 13.4 | 17.0 | 21 | 21 | |
| AE-24-431-B10 | 1 | 1140 | CFM | 6042 | 5714 | 5626 | 5361 | 5137 | 4619 | 4146 | 3476 | 3136 | 2028 |
| | | | BHP | 1.003 | 1.024 | 1.028 | 1.039 | 1.053 | 1.087 | 1.098 | 1.073 | 1.119 | 1.167 |
| | | | Sones | 19.8 | 20 | 21 | 20 | 20 | 20 | 21 | 24 | 24 | 24 |

Performance shown is for Model AE exhaust for installation type A: Free inlet, Free outlet. Performance ratings include the effects of a birdscreen in the airstream.

The sound ratings shown are loudness values in fan sones at 5 ft. (1.5 m) in a hemispherical free field calculated per AMCA Standard 301. Values shown are for installation type A: Free inlet fan sone levels.

Model AS 12-24

Direct Drive

| Model Number | HP (Size) | Fan RPM | | CFM / Static Pressure in Inches WG | | | | | | | | | |
|---------------|-----------|---------|-------|------------------------------------|-------|-------|-------|-------|-------|-------|-------|-------|-------|
| | | | | 0 | 0.10 | 0.125 | 0.20 | 0.25 | 0.375 | 0.50 | 0.625 | 0.75 | 1.0 |
| AS-12-420-A4 | 1/4 | 1750 | CFM | 929 | 835 | 813 | 708 | 595 | 415 | | | | |
| | | | BHP | 0.037 | 0.046 | 0.047 | 0.054 | 0.058 | 0.068 | | | | |
| | | | Sones | 9.6 | 8.9 | 8.9 | 11.4 | 14.3 | 12.6 | | | | |
| AS-12-433-A4 | 1/4 | 1750 | CFM | 1444 | 1412 | 1400 | 1294 | 1203 | 953 | 641 | | | |
| | | | BHP | 0.093 | 0.1 | 0.105 | 0.107 | 0.123 | 0.135 | 0.148 | | | |
| | | | Sones | 11.4 | 11.5 | 11.6 | 11.8 | 12.2 | 15.1 | 15.8 | | | |
| AS-14-428-A4 | 1/4 | 1750 | CFM | 2041 | 1940 | 1912 | 1827 | 1742 | 1567 | 1380 | 1155 | 1018 | |
| | | | BHP | 0.127 | 0.142 | 0.145 | 0.155 | 0.172 | 0.195 | 0.209 | 0.228 | 0.245 | |
| | | | Sones | 16.1 | 15.8 | 15.7 | 15.8 | 15.9 | 15.9 | 18.4 | 18.9 | 17.3 | |
| AS-14-440-A5 | 1/2 | 1750 | CFM | 2586 | 2442 | 2395 | 2261 | 2176 | 1971 | 1799 | 1588 | 1380 | |
| | | | BHP | 0.32 | 0.329 | 0.331 | 0.338 | 0.346 | 0.375 | 0.415 | 0.436 | 0.459 | |
| | | | Sones | 20 | 19.9 | 19.8 | 19.9 | 19.9 | 19.8 | 21 | 21 | 19.9 | |
| AS-16-420-A5 | 1/2 | 1750 | CFM | 2353 | 2229 | 2195 | 2093 | 2008 | 1819 | 1597 | 1330 | 1121 | |
| | | | BHP | 0.177 | 0.192 | 0.195 | 0.206 | 0.221 | 0.236 | 0.25 | 0.268 | 0.286 | |
| | | | Sones | 20 | 19.7 | 19.5 | 19.6 | 19.6 | 19.5 | 21 | 22 | 21 | |
| AS-16-428-A7 | 3/4 | 1750 | CFM | 2920 | 2826 | 2802 | 2693 | 2602 | 2376 | 2188 | 1965 | 1693 | 1200 |
| | | | BHP | 0.311 | 0.331 | 0.336 | 0.349 | 0.356 | 0.379 | 0.428 | 0.436 | 0.466 | 0.517 |
| | | | Sones | 21 | 21 | 21 | 20 | 20 | 19.9 | 19.7 | 21 | 25 | 23 |
| AS-18-427-A7 | 3/4 | 1750 | CFM | 3906 | 3739 | 3690 | 3543 | 3454 | 3228 | 2990 | 2725 | 2454 | |
| | | | BHP | 0.545 | 0.592 | 0.603 | 0.636 | 0.647 | 0.676 | 0.703 | 0.731 | 0.756 | |
| | | | Sones | 30 | 29 | 28 | 28 | 27 | 28 | 28 | 28 | 28 | |
| AS-18-431-A10 | 1 | 1750 | CFM | 4247 | 4110 | 4076 | 3938 | 3846 | 3526 | 3259 | 2998 | 2724 | |
| | | | BHP | 0.725 | 0.763 | 0.773 | 0.789 | 0.8 | 0.888 | 0.916 | 0.943 | 0.972 | |
| | | | Sones | 31 | 30 | 30 | 30 | 30 | 29 | 29 | 28 | 28 | |
| AS-20-428-B5 | 1/2 | 1140 | CFM | 3488 | 3202 | 3125 | 2911 | 2715 | 2315 | 1847 | | | |
| | | | BHP | 0.212 | 0.228 | 0.232 | 0.256 | 0.274 | 0.305 | 0.332 | | | |
| | | | Sones | 16.7 | 17.5 | 17.7 | 18.1 | 18.4 | 17.1 | 18.9 | | | |
| AS-20-428-A15 | 1½ | 1750 | CFM | 5355 | 5181 | 5137 | 4987 | 4886 | 4648 | 4408 | 4073 | 3830 | 3272 |
| | | | BHP | 0.767 | 0.79 | 0.795 | 0.814 | 0.827 | 0.879 | 0.94 | 1.012 | 1.056 | 1.142 |
| | | | Sones | 29 | 31 | 32 | 33 | 34 | 34 | 34 | 33 | 33 | 33 |
| AS-24-418-B5 | 1/2 | 1140 | CFM | 4569 | 4289 | 4215 | 3992 | 3841 | 3392 | 2958 | 2422 | | |
| | | | BHP | 0.369 | 0.392 | 0.399 | 0.415 | 0.422 | 0.453 | 0.474 | 0.497 | | |
| | | | Sones | 24 | 23 | 23 | 23 | 23 | 22 | 22 | 19.4 | | |
| AS-24-430-B10 | 1 | 1140 | CFM | 5742 | 5401 | 5315 | 5066 | 4929 | 4556 | 4131 | 3650 | 3066 | |
| | | | BHP | 0.855 | 0.884 | 0.892 | 0.915 | 0.932 | 0.973 | 1.012 | 1.05 | 1.091 | |
| | | | Sones | 29 | 25 | 25 | 24 | 24 | 25 | 26 | 27 | 29 | |

Performance shown is for Model AS supply for installation type A: Free inlet, Free outlet. Performance ratings include the effects of a birdscreen in the airstream.

The sound ratings shown are loudness values in fan sones at 5 ft. (1.5 m) in a hemispherical free field calculated per AMCA Standard 301. Values shown are for installation type A: Free inlet fan sone levels.

Model ABE 200

Belt Drive

| Model Number | HP (Size) | Fan RPM | | CFM / Static Pressure in Inches WG | | | | | | | | | | |
|--------------|-----------|---------|-------|------------------------------------|-------|-------|-------|-------|-------|-------|-------|-------|------|--|
| | | | | 0 | 0.125 | 0.15 | 0.20 | 0.25 | 0.30 | 0.375 | 0.50 | 0.625 | 0.75 | |
| ABE-200-4 | 1/4 | 650 | CFM | 2242 | 1685 | 1475 | 1265 | 791 | | | | | | |
| | | | BHP | 0.132 | 0.136 | 0.129 | 0.14 | 0.141 | | | | | | |
| | | 705 | CFM | 2432 | 1925 | 1815 | 1517 | 1241 | 808 | | | | | |
| | | | BHP | 0.168 | 0.176 | 0.173 | 0.171 | 0.181 | 0.18 | | | | | |
| | | 760 | CFM | 2622 | 2156 | 2056 | 1742 | 1578 | 1259 | | | | | |
| | | | BHP | 0.211 | 0.222 | 0.22 | 0.206 | 0.218 | 0.228 | | | | | |
| | 795 | CFM | 2742 | 2296 | 2205 | 1971 | 1725 | 1540 | 960 | | | | | |
| | | BHP | 0.241 | 0.254 | 0.253 | 0.244 | 0.244 | 0.256 | 0.258 | | | | | |
| | ABE-200-3 | 1/3 | 835 | CFM | 2880 | 2454 | 2372 | 2188 | 1888 | 1739 | 1289 | | | |
| | | | | BHP | 0.28 | 0.295 | 0.295 | 0.289 | 0.275 | 0.289 | 0.302 | | | |
| | | | 875 | CFM | 3018 | 2610 | 2532 | 2362 | 2109 | 1906 | 1612 | | | |
| | | BHP | | 0.322 | 0.339 | 0.339 | 0.335 | 0.32 | 0.324 | 0.344 | | | | |
| ABE-200-5 | | 1/2 | 930 | CFM | 3208 | 2822 | 2748 | 2597 | 2431 | 2130 | 1930 | 1209 | | |
| | | | | BHP | 0.386 | 0.407 | 0.407 | 0.406 | 0.399 | 0.377 | 0.4 | 0.415 | | |
| | 1002 | | CFM | 3456 | 3092 | 3027 | 2890 | 2743 | 2589 | 2228 | 1795 | | | |
| | | BHP | 0.483 | 0.505 | 0.509 | 0.509 | 0.505 | 0.498 | 0.48 | 0.518 | | | | |
| | ABE-200-7 | 3/4 | 1040 | CFM | 3588 | 3233 | 3173 | 3041 | 2905 | 2756 | 2382 | 2084 | 1353 | |
| | | | | BHP | 0.54 | 0.562 | 0.569 | 0.569 | 0.568 | 0.56 | 0.527 | 0.57 | 0.58 | |
| 1095 | | | CFM | 3777 | 3435 | 3378 | 3256 | 3130 | 2994 | 2742 | 2317 | 1802 | | |
| | | BHP | 0.631 | 0.652 | 0.659 | 0.665 | 0.665 | 0.659 | 0.64 | 0.646 | 0.683 | | | |
| 1147 | | CFM | 3957 | 3625 | 3570 | 3457 | 3337 | 3215 | 3012 | 2532 | 2219 | 1547 | | |
| | | BHP | 0.725 | 0.745 | 0.753 | 0.764 | 0.764 | 0.763 | 0.75 | 0.724 | 0.77 | 0.779 | | |

Performance shown is for Model ABE exhaust for installation type A: Free inlet, Free outlet. Power rating (BHP) does not include drive losses. Performance ratings include the effects of a birdscreen in the airstream.

Model ABE 240

Belt Drive

| Model Number | HP (Size) | Fan RPM | | CFM / Static Pressure in Inches WG | | | | | | | | | | | |
|--------------|-----------|-----------|-----|------------------------------------|-------|-------|-------|-------|-------|-------|-------|-------|-------|--|--|
| | | | | 0 | 0.125 | 0.15 | 0.20 | 0.25 | 0.30 | 0.375 | 0.50 | 0.625 | 0.75 | | |
| ABE-240-4 | 1/4 | 350 | CFM | 1952 | | | | | | | | | | | |
| | | | BHP | 0.051 | | | | | | | | | | | |
| | | 450 | CFM | 2509 | 1490 | 1214 | | | | | | | | | |
| | | | BHP | 0.108 | 0.107 | 0.106 | | | | | | | | | |
| | | 550 | CFM | 3067 | 2272 | 2058 | 1717 | 1222 | | | | | | | |
| | | | BHP | 0.198 | 0.196 | 0.193 | 0.196 | 0.195 | | | | | | | |
| | | 601 | CFM | 3351 | 2663 | 2477 | 2124 | 1777 | 1322 | | | | | | |
| | | | BHP | 0.258 | 0.258 | 0.255 | 0.253 | 0.254 | 0.255 | | | | | | |
| | | ABE-240-3 | 1/3 | 662 | CFM | 3691 | 3082 | 2945 | 2600 | 2301 | 1984 | 1363 | | | |
| | | | | | BHP | 0.345 | 0.347 | 0.345 | 0.339 | 0.339 | 0.34 | 0.342 | | | |
| ABE-240-5 | 1/2 | 700 | CFM | 3903 | 3323 | 3214 | 2908 | 2581 | 2330 | 1794 | | | | | |
| | | | BHP | 0.408 | 0.412 | 0.41 | 0.404 | 0.398 | 0.403 | 0.399 | | | | | |
| | | 757 | CFM | 4221 | 3679 | 3578 | 3344 | 3045 | 2756 | 2391 | 1488 | | | | |
| | | | BHP | 0.516 | 0.522 | 0.52 | 0.515 | 0.508 | 0.504 | 0.511 | 0.512 | | | | |
| ABE-240-7 | 3/4 | 800 | CFM | 4461 | 3944 | 3848 | 3658 | 3387 | 3095 | 2737 | 1979 | | | | |
| | | | BHP | 0.609 | 0.617 | 0.615 | 0.611 | 0.604 | 0.597 | 0.6 | 0.597 | | | | |
| | | 868 | CFM | 4840 | 4372 | 4268 | 4093 | 3901 | 3645 | 3240 | 2699 | 1914 | | | |
| | | | BHP | 0.778 | 0.787 | 0.788 | 0.784 | 0.779 | 0.771 | 0.758 | 0.769 | 0.767 | | | |
| ABE-240-10 | 1 | 900 | CFM | 5018 | 4572 | 4470 | 4295 | 4126 | 3891 | 3507 | 2979 | 2275 | 1565 | | |
| | | | BHP | 0.867 | 0.877 | 0.878 | 0.875 | 0.87 | 0.863 | 0.85 | 0.857 | 0.849 | 0.868 | | |
| | | 954 | CFM | 5320 | 4905 | 4809 | 4631 | 4472 | 4297 | 3946 | 3386 | 2848 | 2133 | | |
| | | | BHP | 1.033 | 1.043 | 1.045 | 1.045 | 1.04 | 1.034 | 1.021 | 1.013 | 1.017 | 1.018 | | |

Performance shown is for Model ABE exhaust for installation type A: Free inlet, Free outlet. Power rating (BHP) does not include drive losses. Performance ratings include the effects of a birdscreen in the airstream.

Model ABE 300

Belt Drive

| Model Number | HP (Size) | Fan RPM | | CFM / Static Pressure in Inches WG | | | | | | | | | | |
|--------------|-----------|---------|-----|------------------------------------|-------|-------|-------|-------|-------|-------|-------|-------|-------|--|
| | | | | 0 | 0.125 | 0.20 | 0.25 | 0.375 | 0.50 | 0.625 | 0.75 | 0.875 | 1.00 | |
| ABE-300-5 | 1/2 | 450 | CFM | 4143 | 3136 | 2477 | 1919 | | | | | | | |
| | | | BHP | 0.25 | 0.264 | 0.269 | 0.264 | | | | | | | |
| | | 500 | CFM | 4604 | 3727 | 3068 | 2732 | 1528 | | | | | | |
| | | | BHP | 0.343 | 0.362 | 0.349 | 0.37 | 0.392 | | | | | | |
| | | 551 | CFM | 5073 | 4292 | 3735 | 3337 | 2349 | | | | | | |
| | | | BHP | 0.459 | 0.483 | 0.48 | 0.47 | 0.484 | | | | | | |
| ABE-300-7 | 3/4 | 590 | CFM | 5432 | 4709 | 4215 | 3835 | 3009 | 1977 | | | | | |
| | | | BHP | 0.564 | 0.592 | 0.595 | 0.581 | 0.606 | 0.632 | | | | | |
| | | 631 | CFM | 5810 | 5139 | 4697 | 4369 | 3571 | 2631 | 1685 | | | | |
| | | | BHP | 0.69 | 0.722 | 0.728 | 0.727 | 0.731 | 0.732 | 0.798 | | | | |
| | | 660 | CFM | 6077 | 5438 | 5027 | 4717 | 3914 | 3112 | 2216 | | | | |
| | | | BHP | 0.789 | 0.824 | 0.833 | 0.832 | 0.817 | 0.837 | 0.884 | | | | |
| ABE-300-10 | 1 | 695 | CFM | 6399 | 5792 | 5407 | 5130 | 4327 | 3704 | 2777 | 1921 | | | |
| | | | BHP | 0.922 | 0.959 | 0.97 | 0.973 | 0.935 | 0.999 | 0.99 | 1.063 | | | |
| | | 745 | CFM | 6859 | 6292 | 5942 | 5698 | 4991 | 4318 | 3601 | 2784 | 1962 | | |
| | | | BHP | 1.135 | 1.177 | 1.191 | 1.198 | 1.182 | 1.189 | 1.209 | 1.241 | 1.316 | | |
| | | 795 | CFM | 7320 | 6788 | 6468 | 6239 | 5618 | 4901 | 4373 | 3581 | 2851 | 2068 | |
| | | | BHP | 1.38 | 1.426 | 1.444 | 1.451 | 1.454 | 1.399 | 1.482 | 1.451 | 1.523 | 1.601 | |
| ABE-300-20 | 2 | 835 | CFM | 7688 | 7181 | 6880 | 6665 | 6093 | 5431 | 4853 | 4266 | 3484 | 2806 | |
| | | | BHP | 1.598 | 1.649 | 1.669 | 1.677 | 1.686 | 1.647 | 1.672 | 1.719 | 1.696 | 1.791 | |
| | | 875 | CFM | 8056 | 7572 | 7285 | 7087 | 6559 | 5956 | 5320 | 4841 | 4150 | 3448 | |
| | | | BHP | 1.839 | 1.894 | 1.915 | 1.926 | 1.942 | 1.926 | 1.88 | 1.971 | 1.952 | 1.983 | |

Performance shown is for Model ABE exhaust for installation type A: Free inlet, Free outlet. Power rating (BHP) does not include drive losses. Performance ratings include the effects of a birdscreen in the airstream.

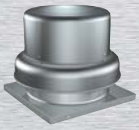
Model ABE 360

Belt Drive

| Model Number | HP (Size) | Fan RPM | | CFM / Static Pressure in Inches WG | | | | | | | | | | |
|--------------|-----------|---------|-----|------------------------------------|-------|-------|-------|-------|-------|-------|-------|-------|-------|--|
| | | | | 0 | 0.125 | 0.15 | 0.20 | 0.25 | 0.30 | 0.375 | 0.50 | 0.625 | 0.75 | |
| ABE-360-7 | 3/4 | 350 | CFM | 5865 | 4084 | 3692 | 2966 | 1861 | | | | | | |
| | | | BHP | 0.273 | 0.279 | 0.277 | 0.278 | 0.282 | | | | | | |
| | | 375 | CFM | 6284 | 4670 | 4273 | 3571 | 2850 | 1815 | | | | | |
| | | | BHP | 0.336 | 0.346 | 0.342 | 0.341 | 0.343 | 0.352 | | | | | |
| | | 400 | CFM | 6703 | 5206 | 4865 | 4166 | 3529 | 2670 | | | | | |
| | | | BHP | 0.408 | 0.419 | 0.418 | 0.414 | 0.415 | 0.418 | | | | | |
| | | 425 | CFM | 7122 | 5724 | 5425 | 4744 | 4128 | 3541 | 2183 | | | | |
| | | | BHP | 0.489 | 0.501 | 0.503 | 0.496 | 0.496 | 0.498 | 0.508 | | | | |
| | | 450 | CFM | 7541 | 6226 | 5949 | 5339 | 4723 | 4152 | 3103 | | | | |
| | | | BHP | 0.581 | 0.593 | 0.596 | 0.594 | 0.589 | 0.59 | 0.594 | | | | |
| | | 493 | CFM | 8261 | 7052 | 6821 | 6312 | 5729 | 5175 | 4398 | 2580 | | | |
| | | | BHP | 0.764 | 0.778 | 0.78 | 0.786 | 0.779 | 0.774 | 0.776 | 0.791 | | | |
| ABE-360-10 | 1 | 520 | CFM | 8714 | 7562 | 7343 | 6878 | 6365 | 5798 | 5043 | 3600 | | | |
| | | | BHP | 0.896 | 0.912 | 0.914 | 0.919 | 0.92 | 0.909 | 0.908 | 0.917 | | | |
| | | 542 | CFM | 9082 | 7972 | 7762 | 7331 | 6861 | 6322 | 5569 | 4405 | 2640 | | |
| | | | BHP | 1.015 | 1.032 | 1.034 | 1.038 | 1.045 | 1.035 | 1.029 | 1.034 | 1.061 | | |
| ABE-360-15 | 1½ | 570 | CFM | 9552 | 8491 | 8290 | 7891 | 7452 | 6981 | 6222 | 5096 | 3541 | | |
| | | | BHP | 1.18 | 1.199 | 1.201 | 1.205 | 1.212 | 1.212 | 1.197 | 1.199 | 1.21 | | |
| | | 595 | CFM | 9971 | 8950 | 8757 | 8374 | 7971 | 7543 | 6806 | 5695 | 4593 | 2926 | |
| | | | BHP | 1.342 | 1.362 | 1.365 | 1.37 | 1.375 | 1.382 | 1.366 | 1.361 | 1.37 | 1.401 | |
| | | 621 | CFM | 10406 | 9425 | 9238 | 8871 | 8502 | 8092 | 7424 | 6316 | 5299 | 3733 | |
| | | | BHP | 1.526 | 1.546 | 1.551 | 1.555 | 1.56 | 1.567 | 1.562 | 1.547 | 1.554 | 1.565 | |

Performance shown is for Model ABE exhaust for installation type A: Free inlet, Free outlet. Power rating (BHP) does not include drive losses. Performance ratings include the effects of a birdscreen in the airstream.

Additional Downblast Ventilators



The spun aluminum downblast centrifugal roof exhaust fan models G/GB (direct or belt drive) are an economical means of exhausting air. They utilize a backward inclined wheel and are available in 45 different sizes. Capacities range from 73 to 44,700 cfm and up to 2.5 in. wg of static pressure.



The low silhouette fabra style downblast centrifugal roof exhaust fan Series L models LD/LB (direct or belt drive) are a low profile and architectural means of exhausting air. They utilize a backward inclined wheel and are available in 20 different sizes. Capacities range from 79 to 37,000 cfm and up to 1.25 in. wg of static pressure.



The low silhouette penthouse style downblast centrifugal roof exhaust fan Series L models LDP/LBP (direct or belt drive) are an architectural means of exhausting air. They utilize a backward inclined wheel and are available in 20 different sizes. Capacities range from 79 to 37,000 cfm and up to 1.25 in. wg of static pressure.



The tamper resistant centrifugal roof exhaust fan models NYD/NYB (direct or belt drive) are galvanized construction and prevent entry into the unit and/or building. They utilize a backward inclined wheel and are available in 10 different sizes. Capacities range from 169 to 8,080 cfm and up to 1.25 in. wg of static pressure.



Building Value in Air

Greenheck delivers value to mechanical engineers by helping them solve virtually any air quality challenges their clients face with a comprehensive selection of top

quality, innovative air-related equipment. We offer extra value to contractors by providing easy-to-install, competitively priced, reliable products that arrive on time. And building

owners and occupants value the energy efficiency, low maintenance and quiet dependable operation they experience long after the construction project ends.

Our Warranty

Greenheck warrants this equipment to be free from defects in material and workmanship for a period of one year from the purchase date. Any units or parts which prove defective during the warranty period will be replaced at our option when returned to our factory, transportation prepaid. Motors are warranted by the motor manufacturer for a period of one year. Should motors furnished by Greenheck prove defective during this period, they should be returned to the nearest authorized motor service station. Greenheck will not be responsible for any removal or installation costs.

As a result of our commitment to continuous improvement, Greenheck reserves the right to change specifications without notice.

