

# WMI (Wind Stopping 14) Series

Unheated

Model Lengths: 48"–216"

Environmental Separation (up to 16')

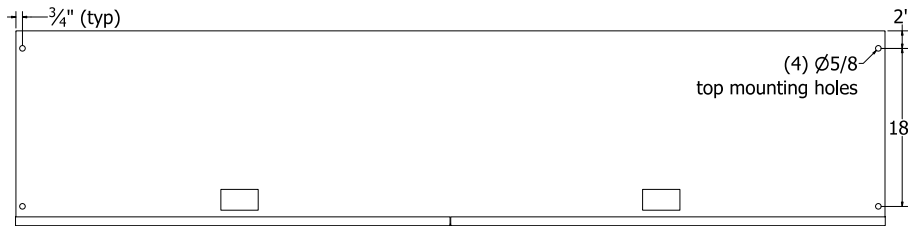
Insect Control (up to 14')



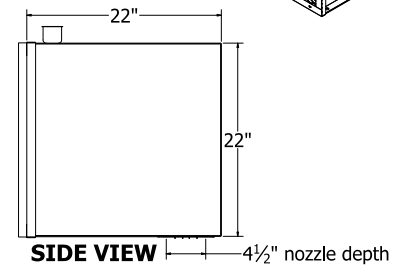
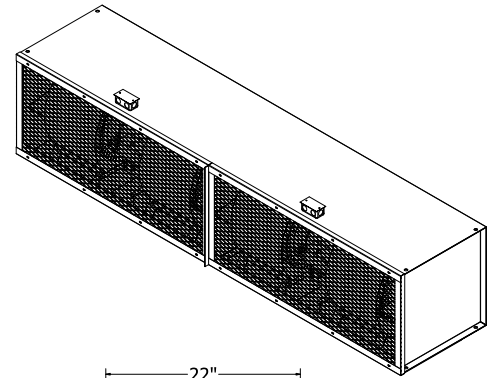
atmosphere is everything

14716 S. BROADWAY, GARDENA, CA 90248 • Ph: (310)532-1555 • Fax: (310)-532-3030 • [www.marsair.com](http://www.marsair.com)

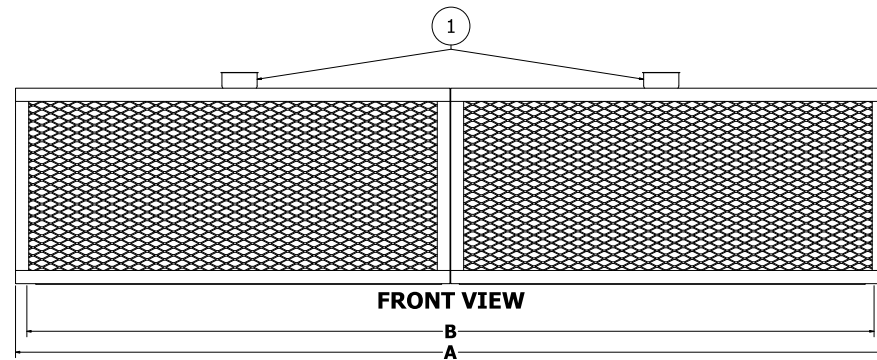
© Copyright Mars Air Systems, LLC 2014



TOP VIEW



SIDE VIEW



FRONT VIEW



**Notes:**

1. External 2"x4" junction boxes for electrical wiring provided on top of unit above each motor
2. Recommended service clearances are 6" to the left and right sides, 12" on top, and 24" in front of the unit.
3. Circuit protection (per NEC) to be installed by others.
4. To prevent accidental damage during operation, unit must be installed so that the bottom of the air curtain does not extend below the door header.
5. Unit can be suspended from overhead on both ends without intermediate support.

Model Number	Mechanical Data				Lab Data		AMCA Certified Lab Data			
	Overall Length A (in)	Nozzle Length B (in)	Motor (hp)	Weight (lb)	Max Velocity (fpm)	Max Volume (cfm)	Avg Velocity (fpm)	Volume (cfm)	Uniformity (%)	Power Rating (watt)
<input type="checkbox"/> WMI48-1U*-TS	51	48	2	260	5500	8250	2614	3921	92	2130
<input type="checkbox"/> WMI60-1U*-TS	63	60	3	305	5200	9750	3205	4737	90	2650
<input type="checkbox"/> WMI72-1U*-TS	75	72	3	345	5800	13050	3009	6711	86	3170
<input type="checkbox"/> WMI96-2U*-TS	99	96	(2) 2	515	5500	16500	2614	7842	92	4260
<input type="checkbox"/> WMI108-2U*-TS	111	108	(2) 3	570	4900	16538	2920	9314	84	5380
<input type="checkbox"/> WMI120-2U*-TS	123	120	(2) 3	610	5200	19500	3205	9474	90	5600
<input type="checkbox"/> WMI144-2U*-TS	147	144	(2) 3	695	5800	26100	3009	13422	86	6340
<input type="checkbox"/> WMI168-3U*-TS	171	168	(3) 3	880	4900	25725	2920	15060	84	8070
<input type="checkbox"/> WMI192-4U*-TS	195	192	(4) 2	1030	5500	33000	2614	15684	92	8520
<i>The following model is not licensed to bear the AMCA seal</i>										
<input type="checkbox"/> WMI216-3U*-TS	219	216	(3) 3	1075	5800	39150	3009	20133	86	9510

\* – Use corresponding letters in "Electrical Data" column headers (see page 2) to complete Note: above data is for 60 Hz at 850 RPM. For 50 Hz, RPM is 700 with a 17% reduction in performance.

- The AMCA Certified Ratings Seal applies to airflow rate, average outlet velocity, outlet velocity uniformity, velocity project, and power rating at free delivery only.

NOTE: Mars Air Systems, LLC reserves the right to change specifications and product design without notice. Such revisions do not entitle the buyer to corresponding changes, improvements, additions, or replacements for previously purchased equipment.

# WMI (Wind Stopping 14) Series

Unheated

Model Lengths: 48”–216”

Environmental Separation (up to 16’)

Insect Control (up to 14’)



atmosphere is everything

14716 S. BROADWAY, GARDENA, CA 90248 • Ph: (310)532-1555 • Fax: (310)-532-3030 • [www.marsair.com](http://www.marsair.com)

© Copyright Mars Air Systems, LLC 2014

## Standard Features:

- ❖ Designed for indoor/outdoor use
- ❖ AMCA-certified to AMCA 211
- ❖ Self-contained one-piece heavy-gauge corrosion-proof paint lock metal design
- ❖ Fire retardant and rust preventative electrostatic polyurethane powder coating
  - Standard color is Titanium Silver (TS)
- ❖ 2 to 3 HP continuous duty Totally Enclosed Air Over (TEAO) motors (NEMA 1)
  - Direct drive system
- ❖ Adjustable air directional vanes with 40° sweep front to back
- ❖ Adjustable perforated volume dampers capable of reducing air velocity up to 50%
- ❖ 12-months parts warranty
- ❖ Freight not included
- ❖ Proudly made in the USA

## Mars Recommended Accessories (see [catalog](#) for complete listing):

- ❖ [Door Limit Switches](#) (\$)
  - 99-125, Industrial surface mounted magnetic switch (controller required)
- ❖ [Controllers](#)
  - MCP‡-†U\*, [Motor Control Panel](#), 120V control voltage (‡ = HP Code, † = # of Motors, \* = Voltage Code) (\$)
    - Note:** possible HP codes = C (2 HP) or D (3 HP)
    - MCP-TD, Adjustable time delay, 1sec-100hr (panel required)
    - MCP-24V, Low voltage control option (panel required)
    - BMS-303, BMS for monitor and control (panel with MCP-24V required)

**Note:** Dry contact provided in panel for monitoring motor. 24Vac signal provided from panel for controlling motor.

(\$) = Shipped loose

## Sound Levels (measured at 10’ in a free field):

2 Motor Unit = 66 dBA, 3 Motor Unit = 67 dBA, 4 Motor Unit = 68 dBA

Electrical Data Full Load Amp (FLA)	Unit Amperage (Voltage Code)		
	208-230V/3Ø (G)	460V/3Ø (H)	575V/3Ø (I)
<input type="checkbox"/> WMI48-1U*-TS	7.2/7.0	3.5	3.0
<input type="checkbox"/> WMI60-1U*-TS	14.2/10.6	5.3	4.5
<input type="checkbox"/> WMI72-1U*-TS	14.2/10.6	5.3	4.5
<input type="checkbox"/> WMI96-2U*-TS	14.4/14.0	7.0	6.0
<input type="checkbox"/> WMI108-2U*-TS	28.4/21.2	10.6	9.0
<input type="checkbox"/> WMI120-2U*-TS	28.4/21.2	10.6	9.0
<input type="checkbox"/> WMI144-2U*-TS	28.4/21.2	10.6	9.0
<input type="checkbox"/> WMI168-3U*-TS	42.6/31.8	15.9	9.0
<input type="checkbox"/> WMI192-4U*-TS	28.8/28.0	14.0	12.0
<input type="checkbox"/> WMI216-3U*-TS	42.6/31.8	15.9	9.0

\* – Use corresponding letters in “Voltage Code” column headers to complete the model numbers.

Ampacity (MCA) = total FLA x 1.25

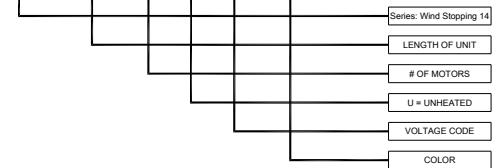
### Alternate voltage codes with FLA data:

380-415V/3Ø/50Hz (W) – consult factory

AMCA Certified Projection Velocity		
Model	Distance from Nozzle (in)	Average Core Velocity (fpm)
WMI60-1U*	36	2180
	84	1493
	132	1240

EXAMPLE

**WMI 144 - 2 U H - TS**



MARS Air Systems, LLC certifies that the Air Curtains shown on this data sheet are licensed to bear the AMCA seal. The ratings shown are based on tests and procedures performed in accordance with AMCA Publication 211 and comply with the requirements of the AMCA Certified Ratings Program. The AMCA Certified Ratings Seal applies to airflow rate, average outlet velocity, outlet velocity uniformity, velocity projection and power rating at free delivery only.

NOTE: Mars Air Systems, LLC reserves the right to change specifications and product design without notice. Such revisions do not entitle the buyer to corresponding changes, improvements, additions, or replacements for previously purchased equipment.